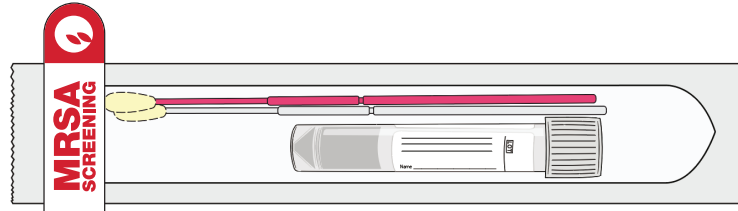


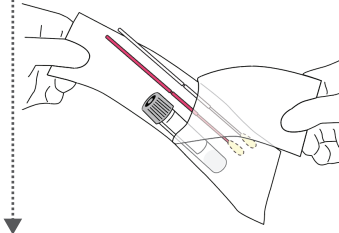


INSTRUCTIONS FOR MRSA SCREENING PCR SAMPLE COLLECTION

COLLECTION KIT

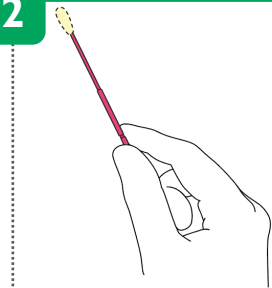


1



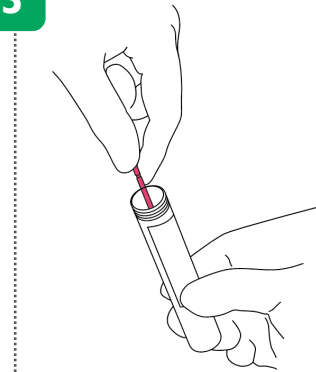
Open the MRSA eSwab sample collection pouch and remove the tube and PINK swab.

2



Use **PINK** swab to collect specimen from **the axilla and groin**.

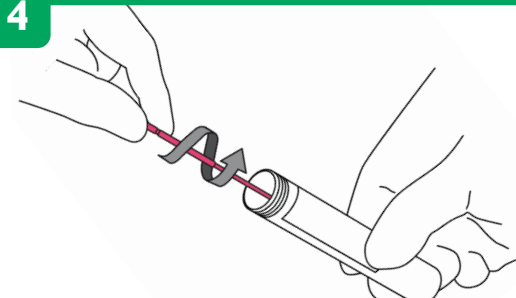
3



Unscrew and remove the cap from eSwab tube making sure not to spill the medium.

Insert the swab into the tube. Dip and gently stir the swab for 5 seconds.

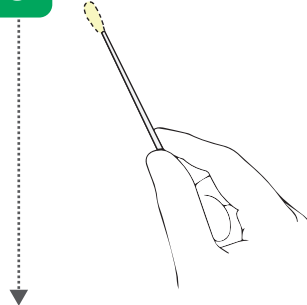
4



Lift the swab from the liquid medium and **squeeze the eSwab against the container** 5 times to allow release of the sample from the flocced fibre holding the tube away from your face.

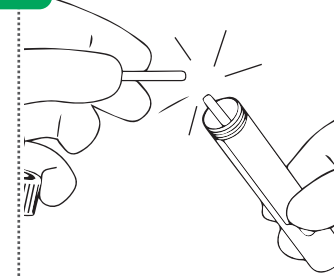
Remove swab and discard into general waste.

5



Use **white** swab to collect specimen from the anterior nares.

6



Insert the swab into the tube and **break** the swab at the molded **breaking point**.

7



Recap the tube with the white swab in-situ.

Label the tube with **CPOE label**. Put the tube in a specimen bag and send to the lab.

For internal circulation only

Refer to Pathology Laboratory Services for more information:

<https://www.sgh.com.sg/clinical-departments-centers/pathology/pathology-handbook/pages/introduction.aspx>