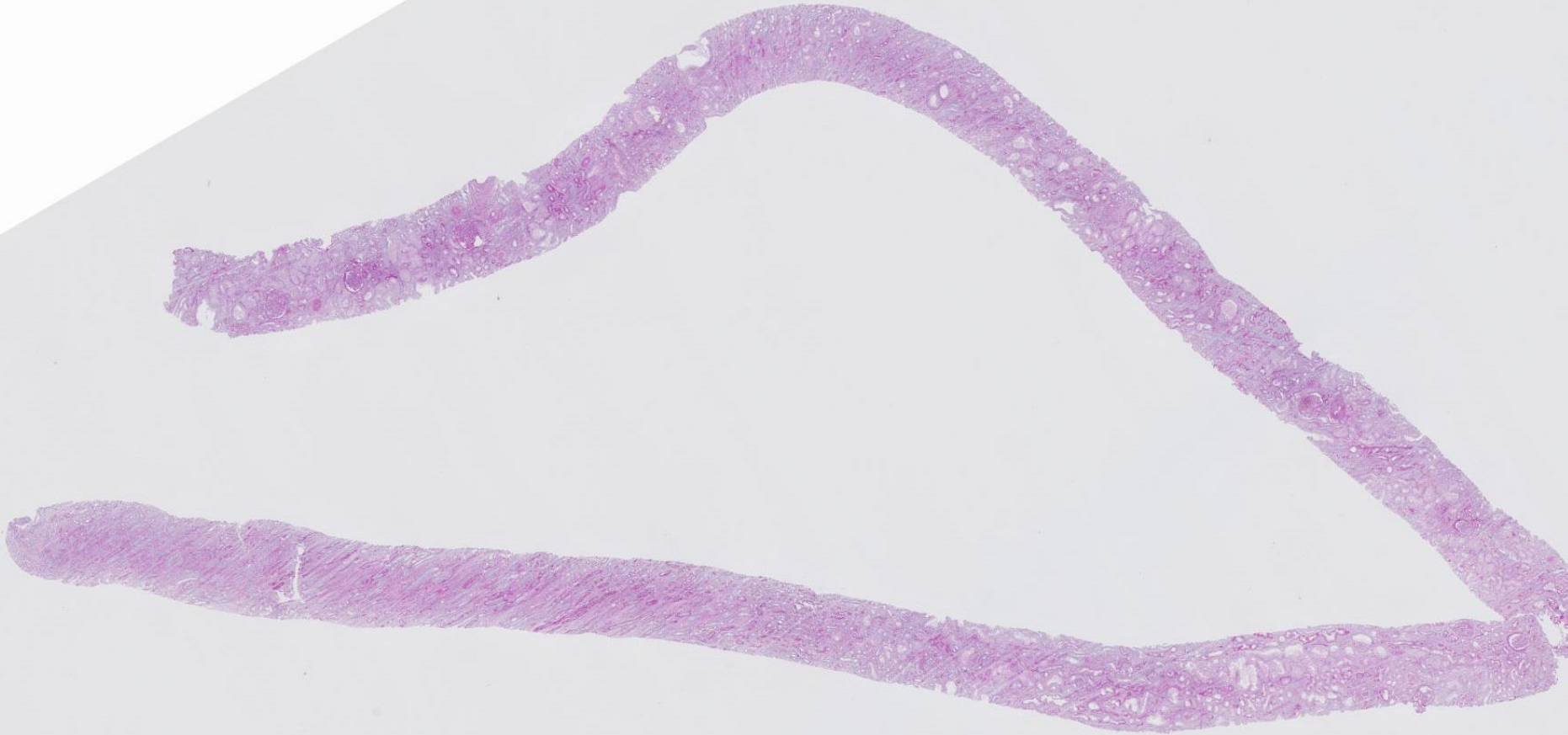
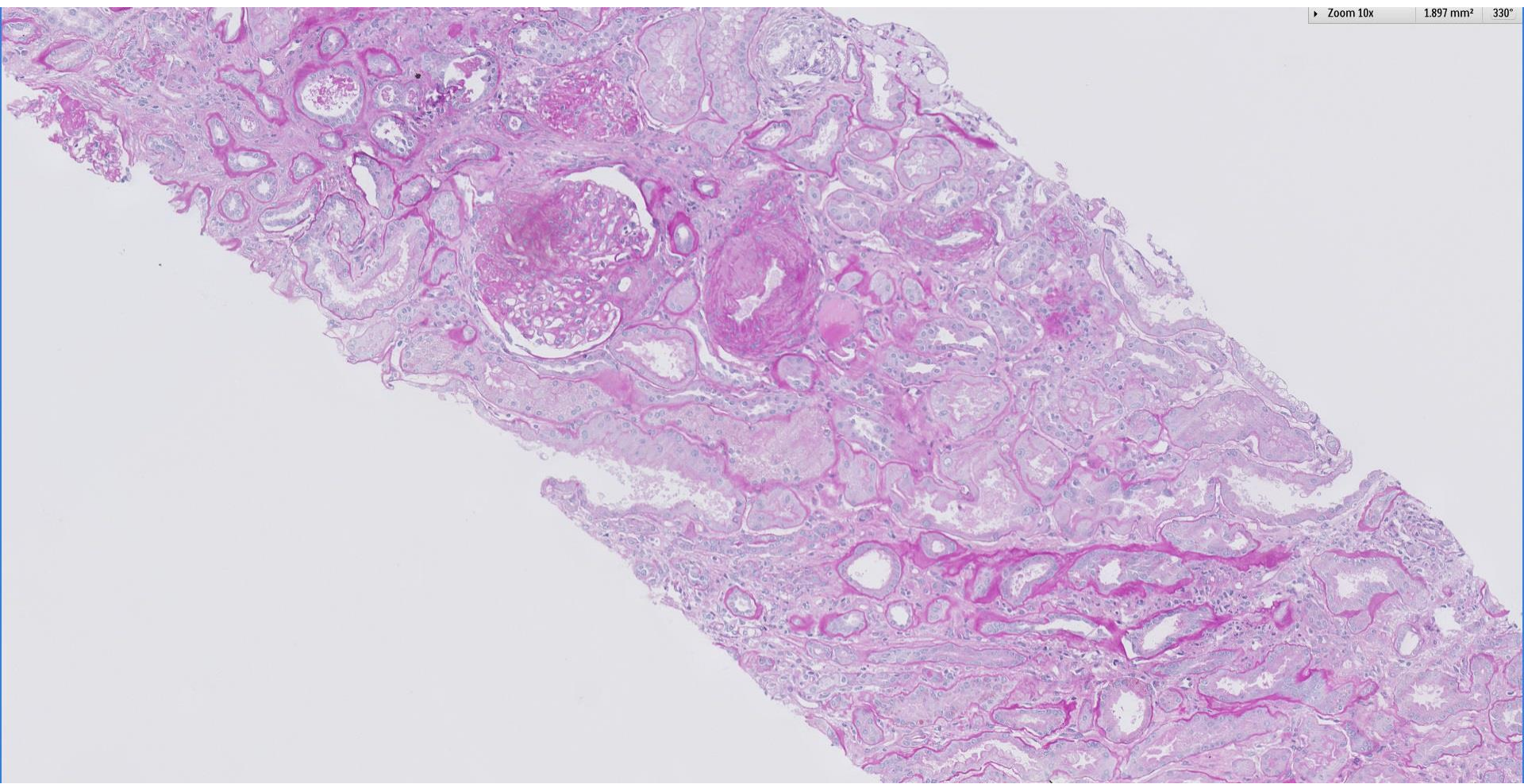
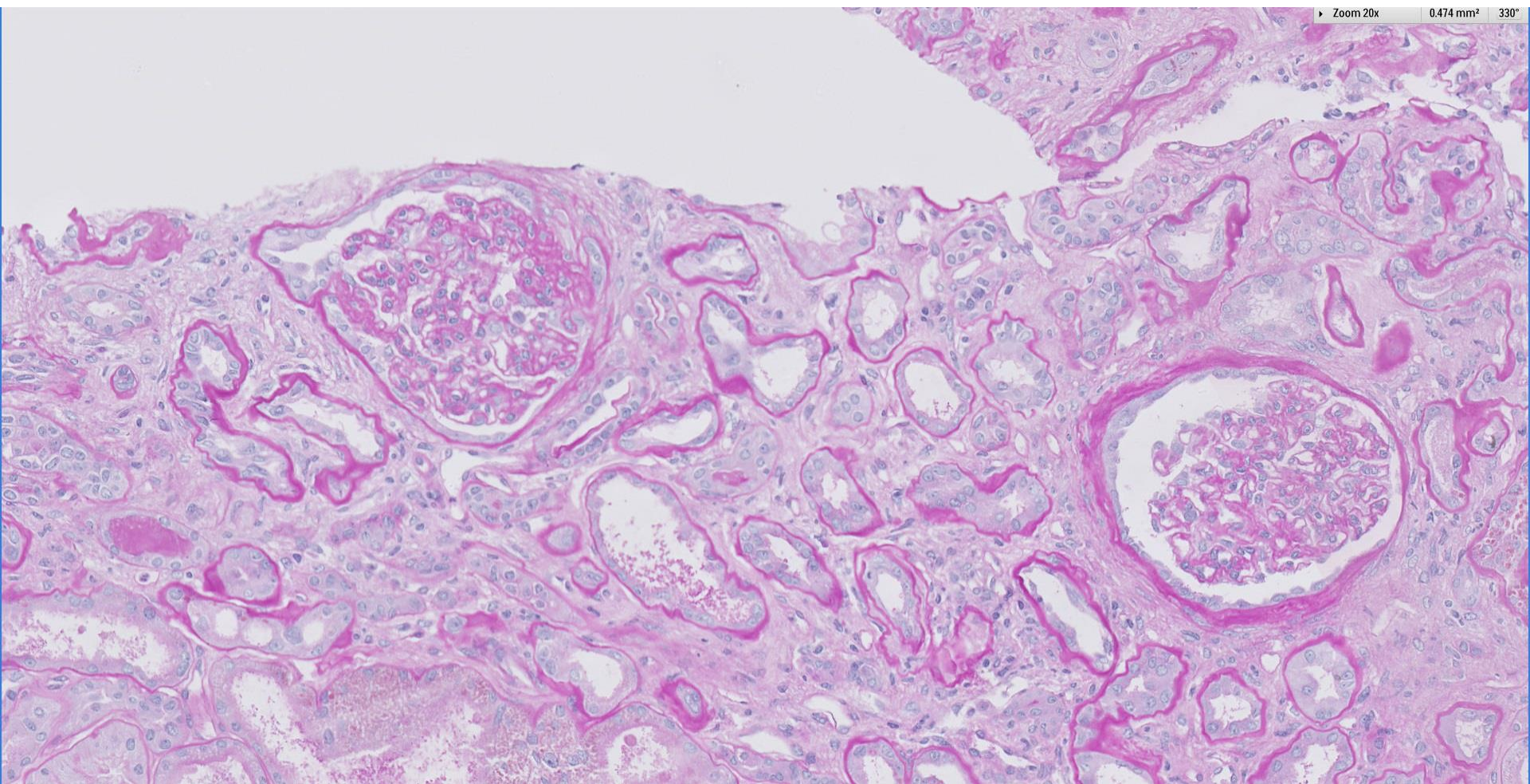


## *Case 75*

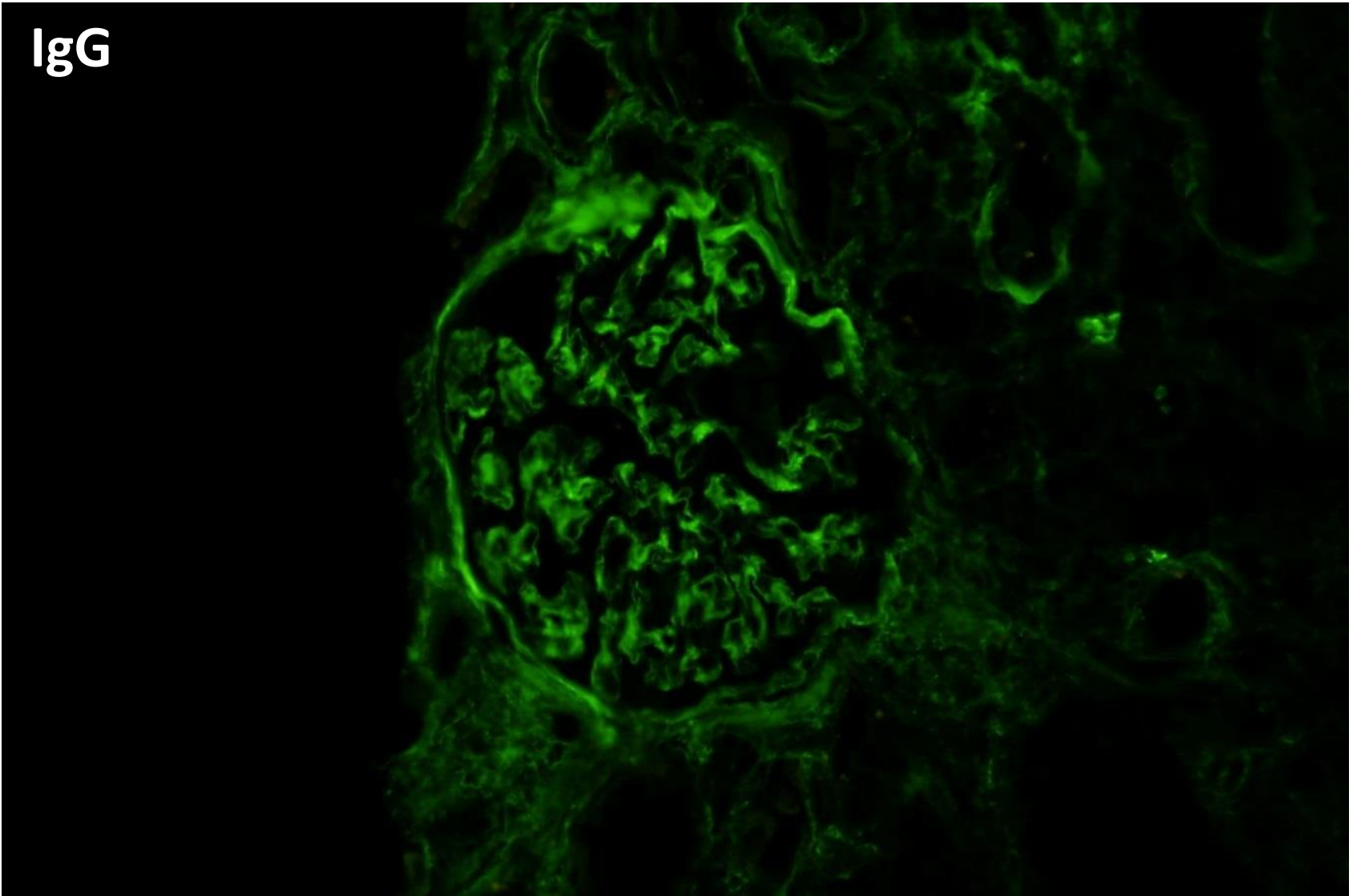
58 year old Indonesian lady with chronic lymphocytic lymphoma, presented with nephrotic syndrome.



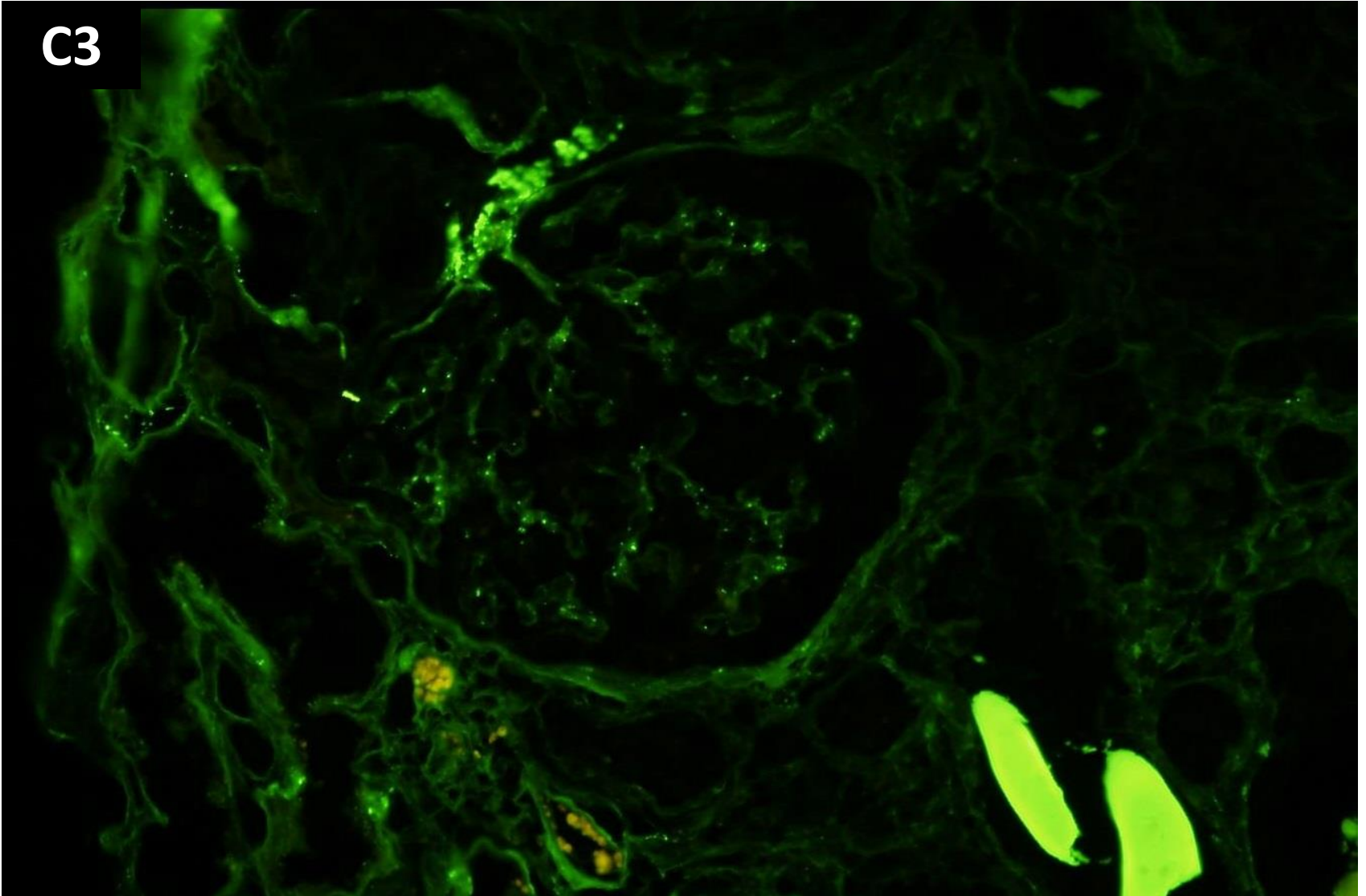


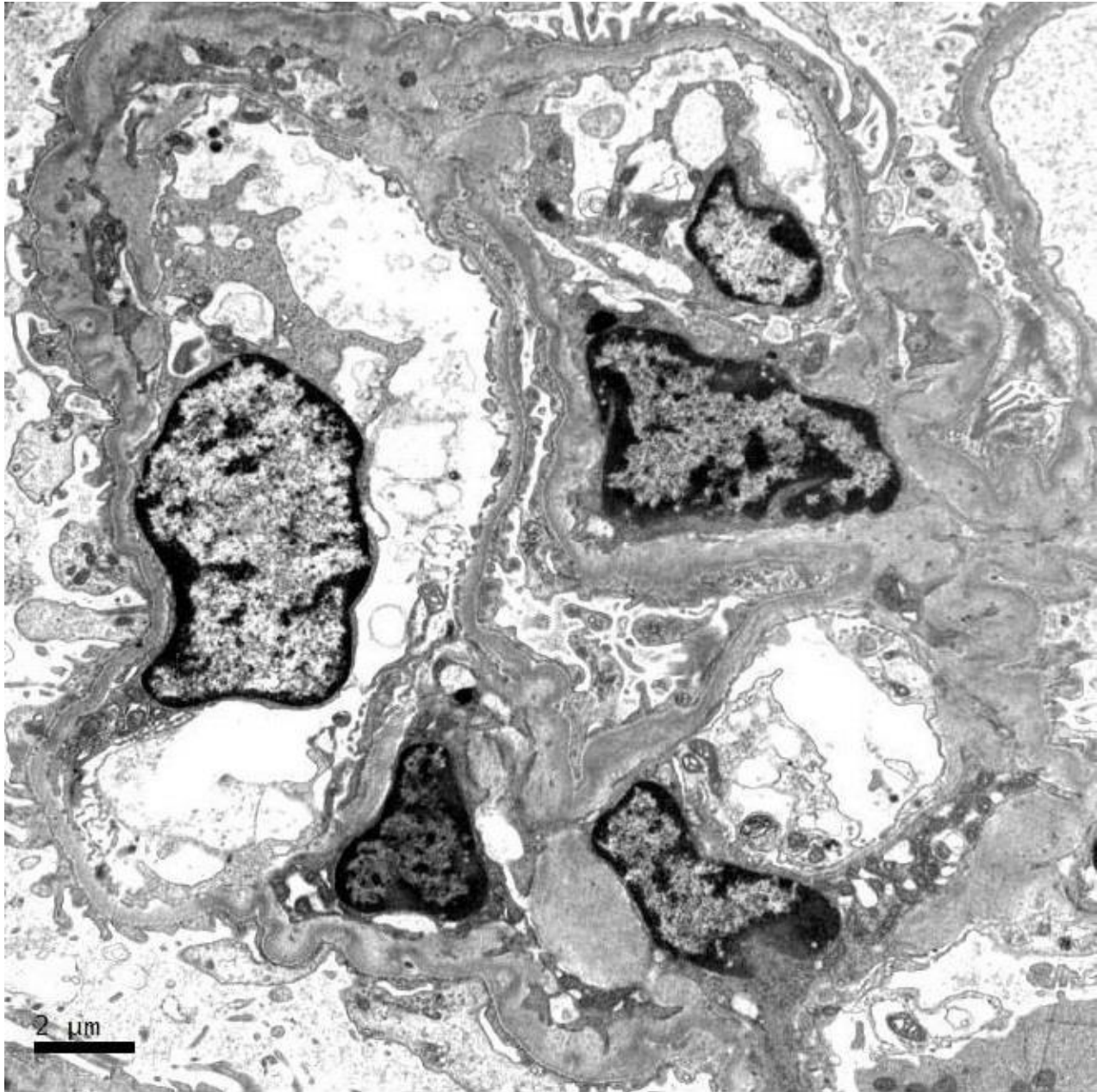


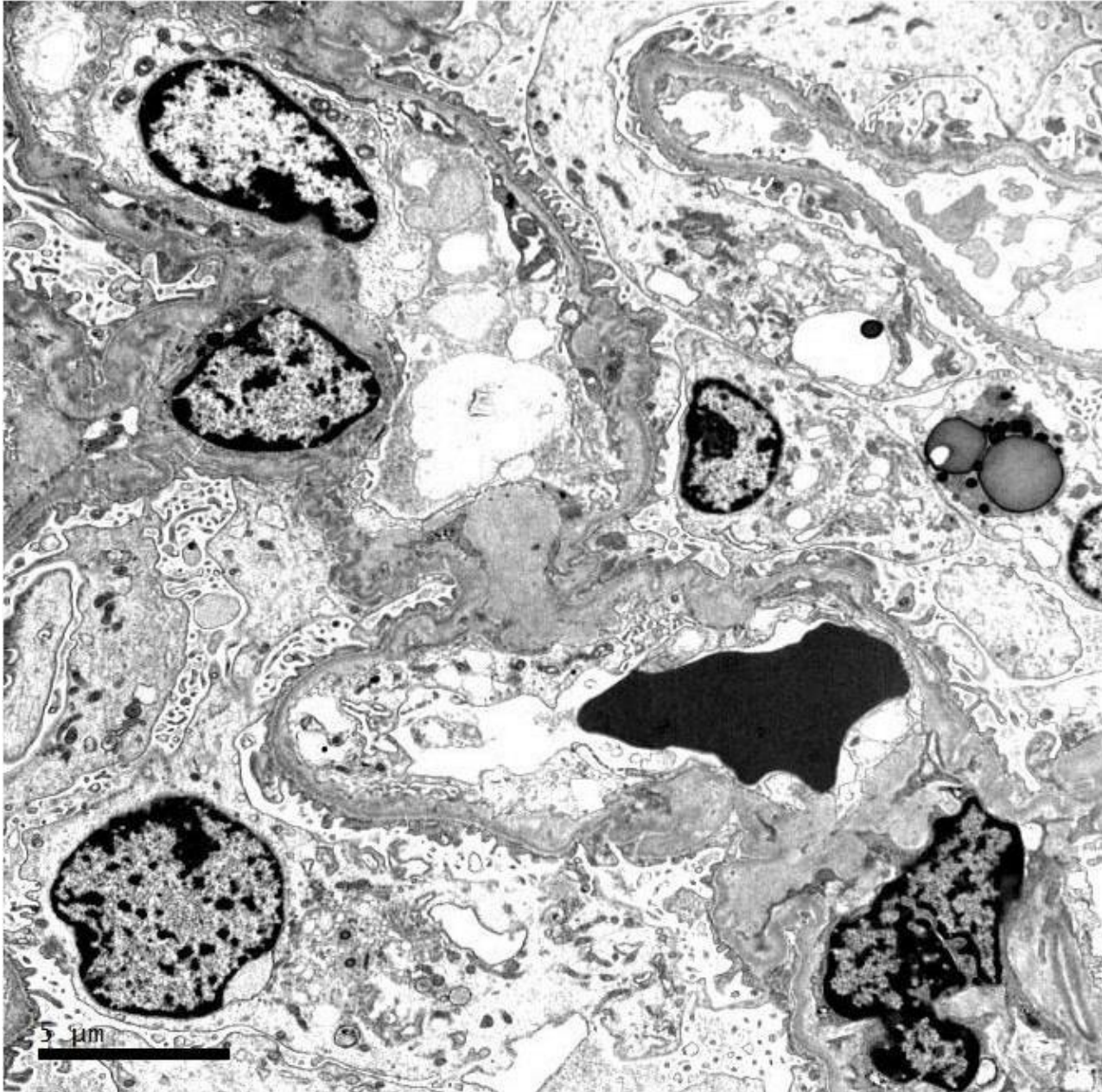
IgG



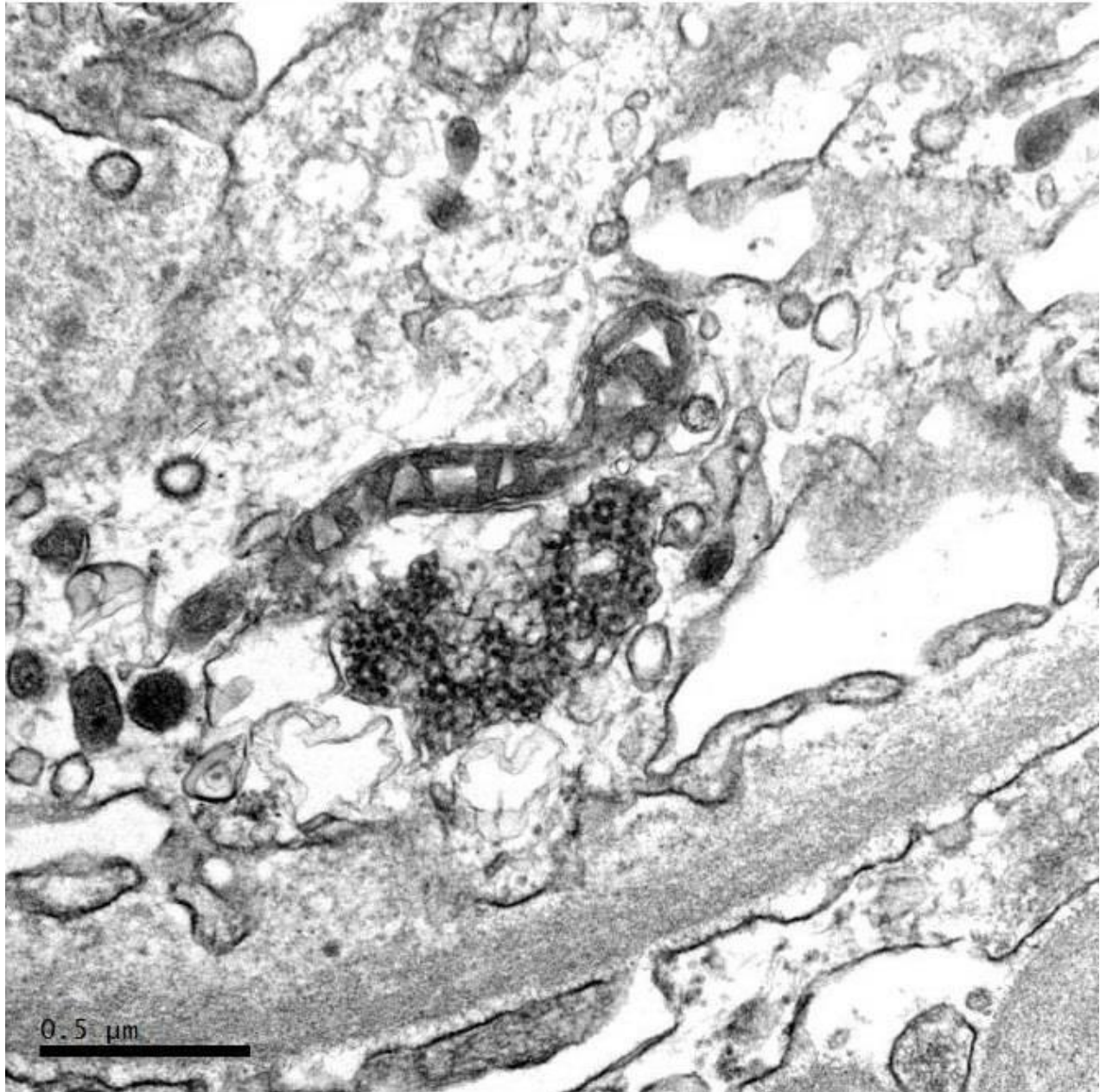
C3

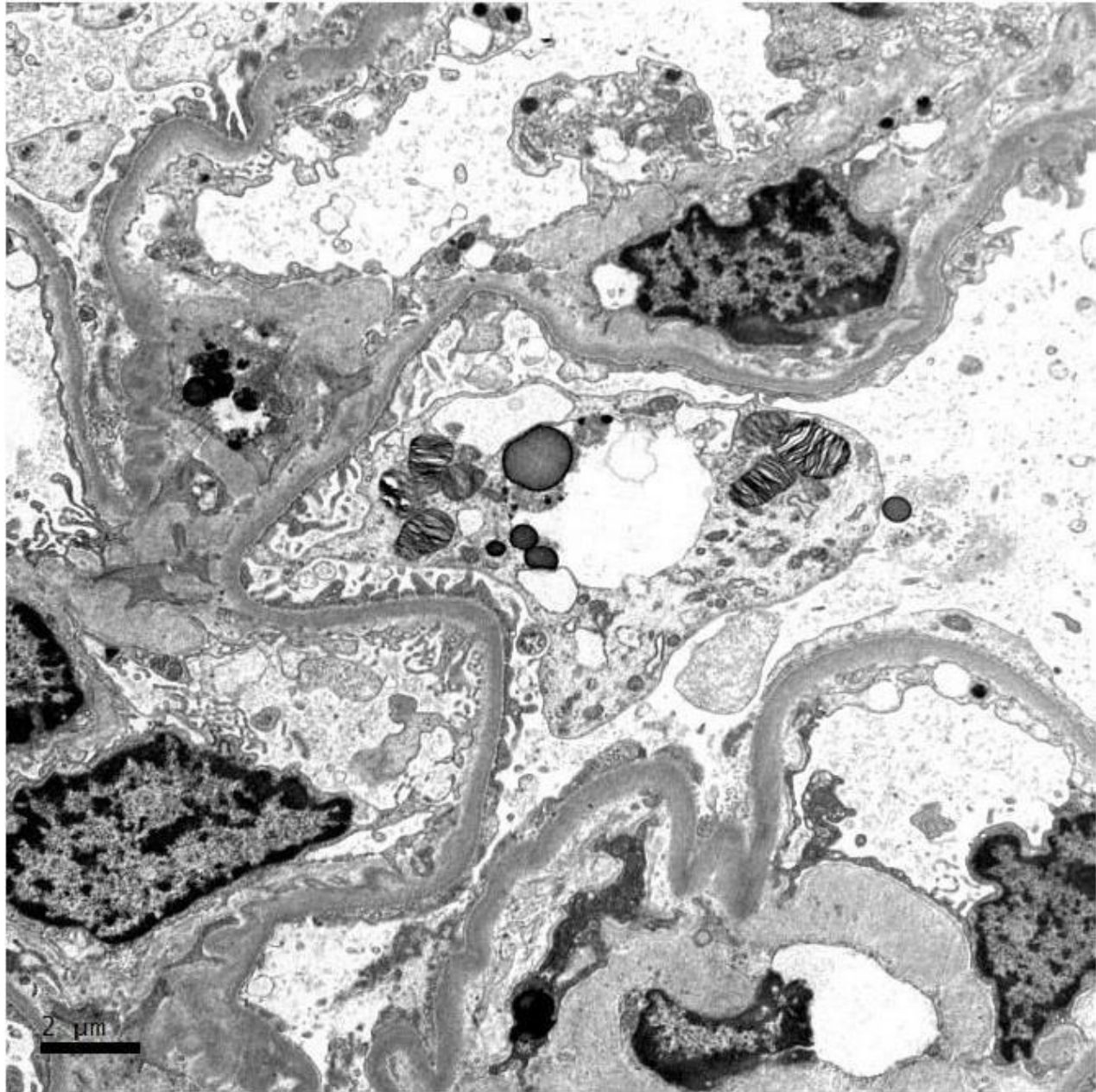


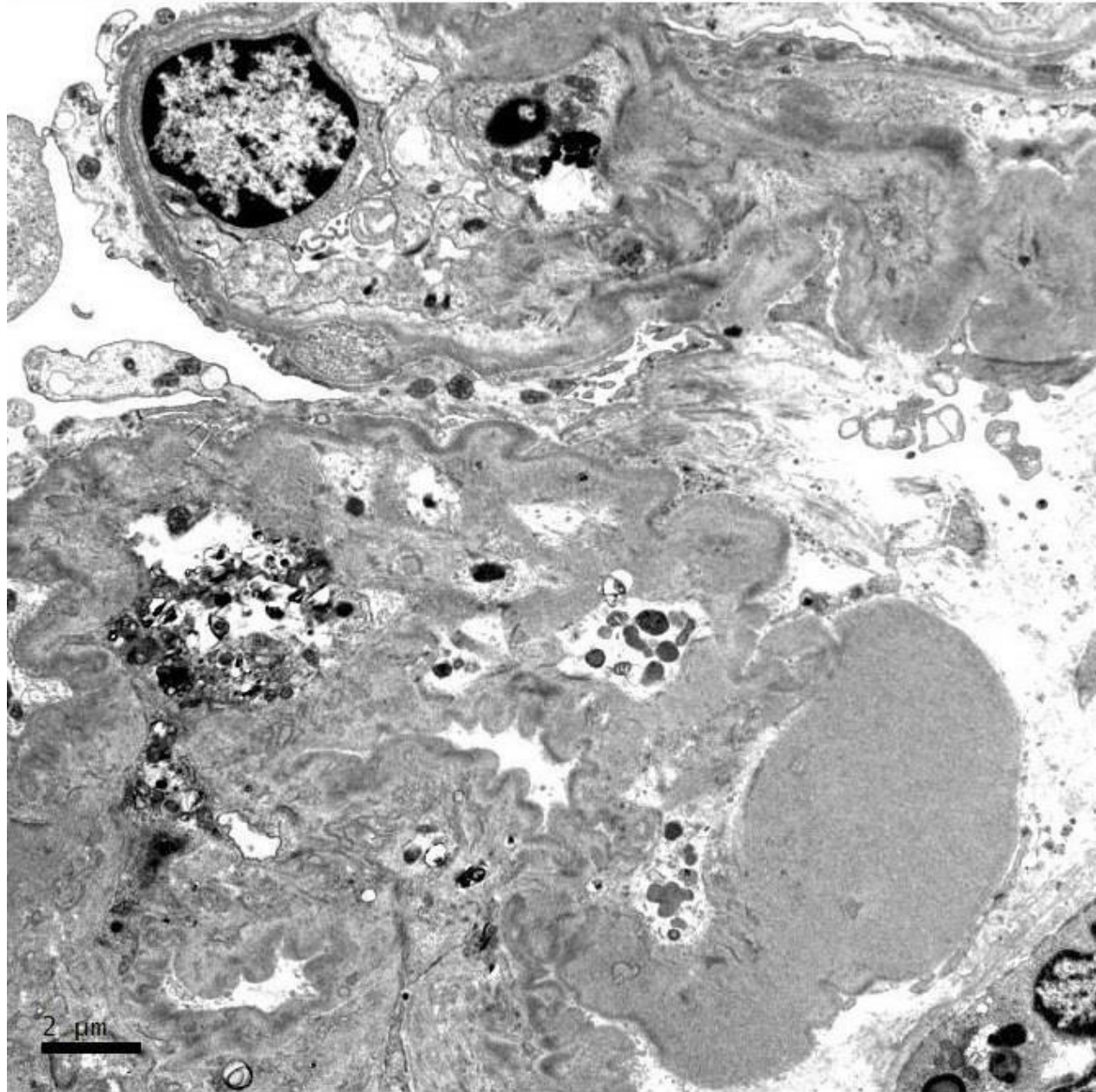














# RENAL BIOPSY CLINICOPATHOLOGICAL WORKSHOP 2018



**PATHOLOGY**



Division of Pathology  
Singapore General Hospital



Department of Renal Medicine  
Singapore General Hospital



**MEDICINE**