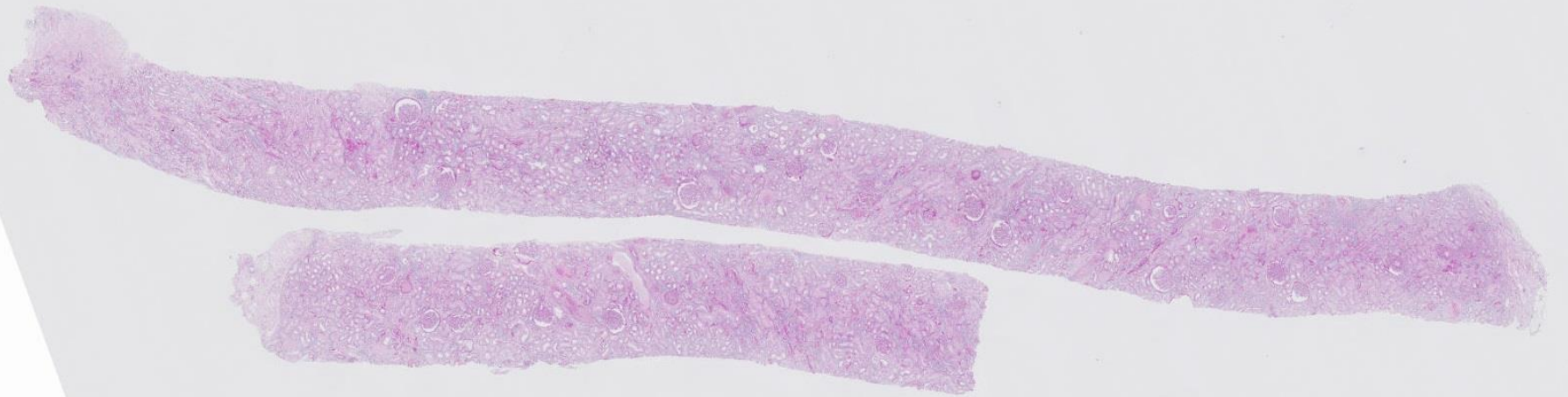
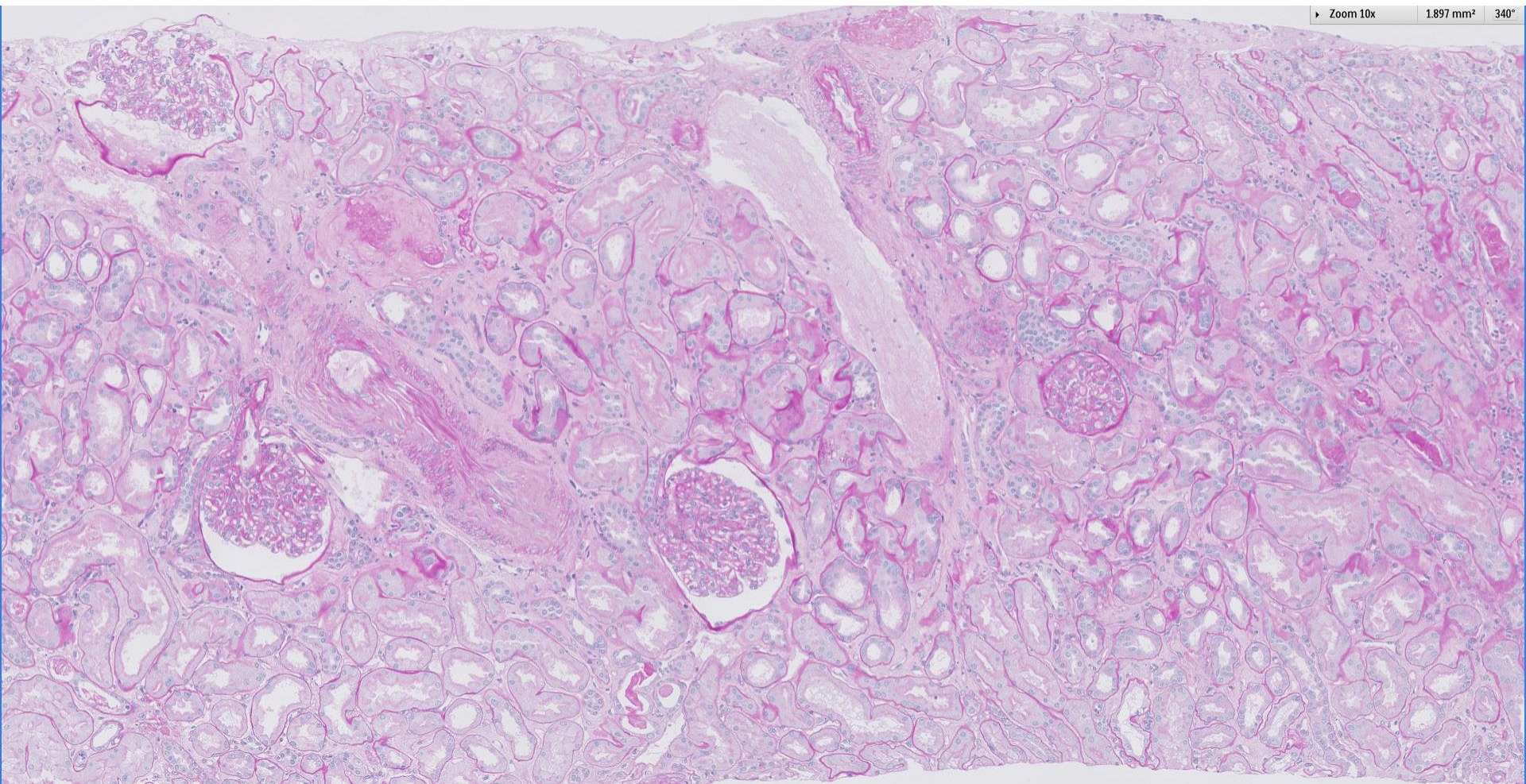
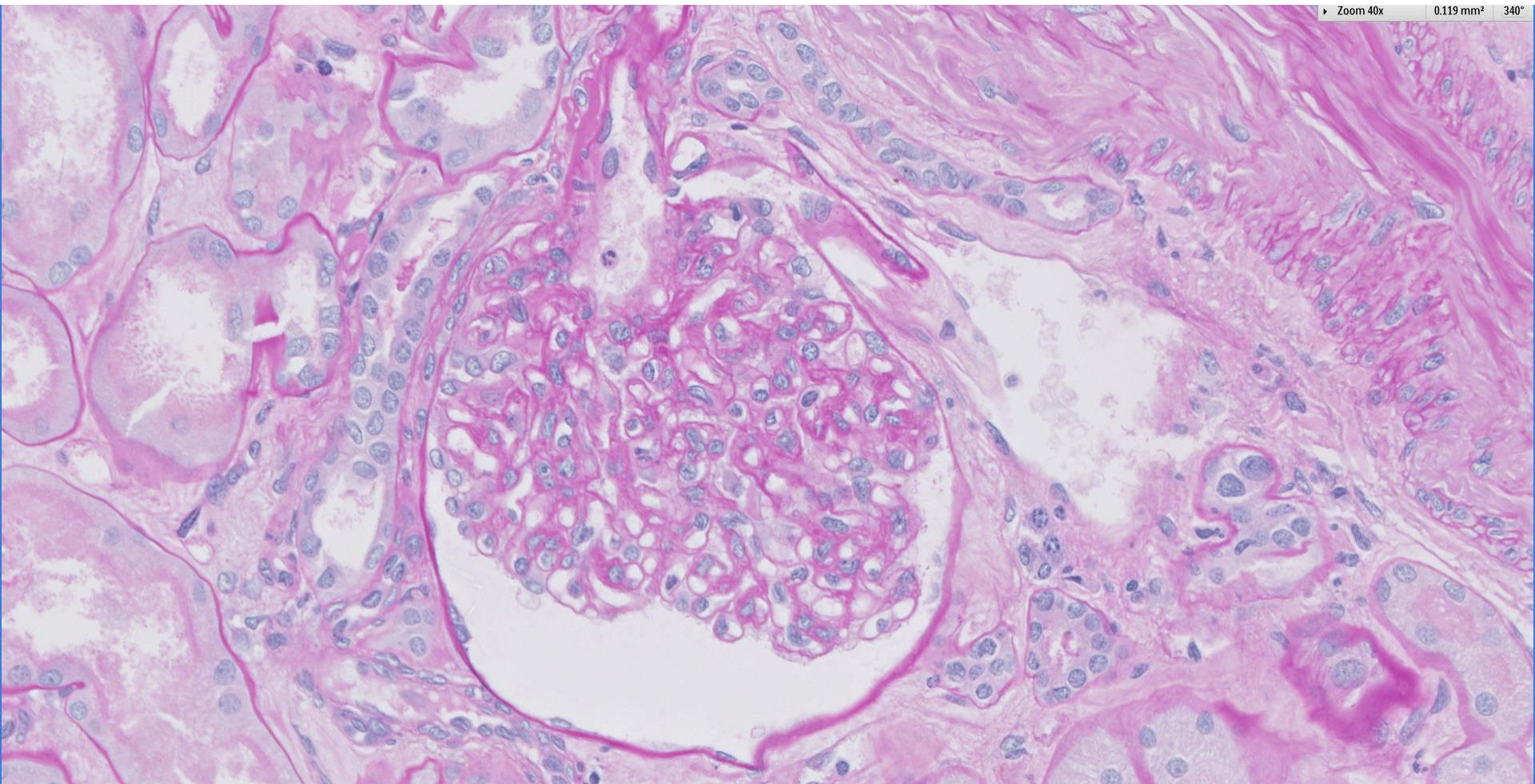


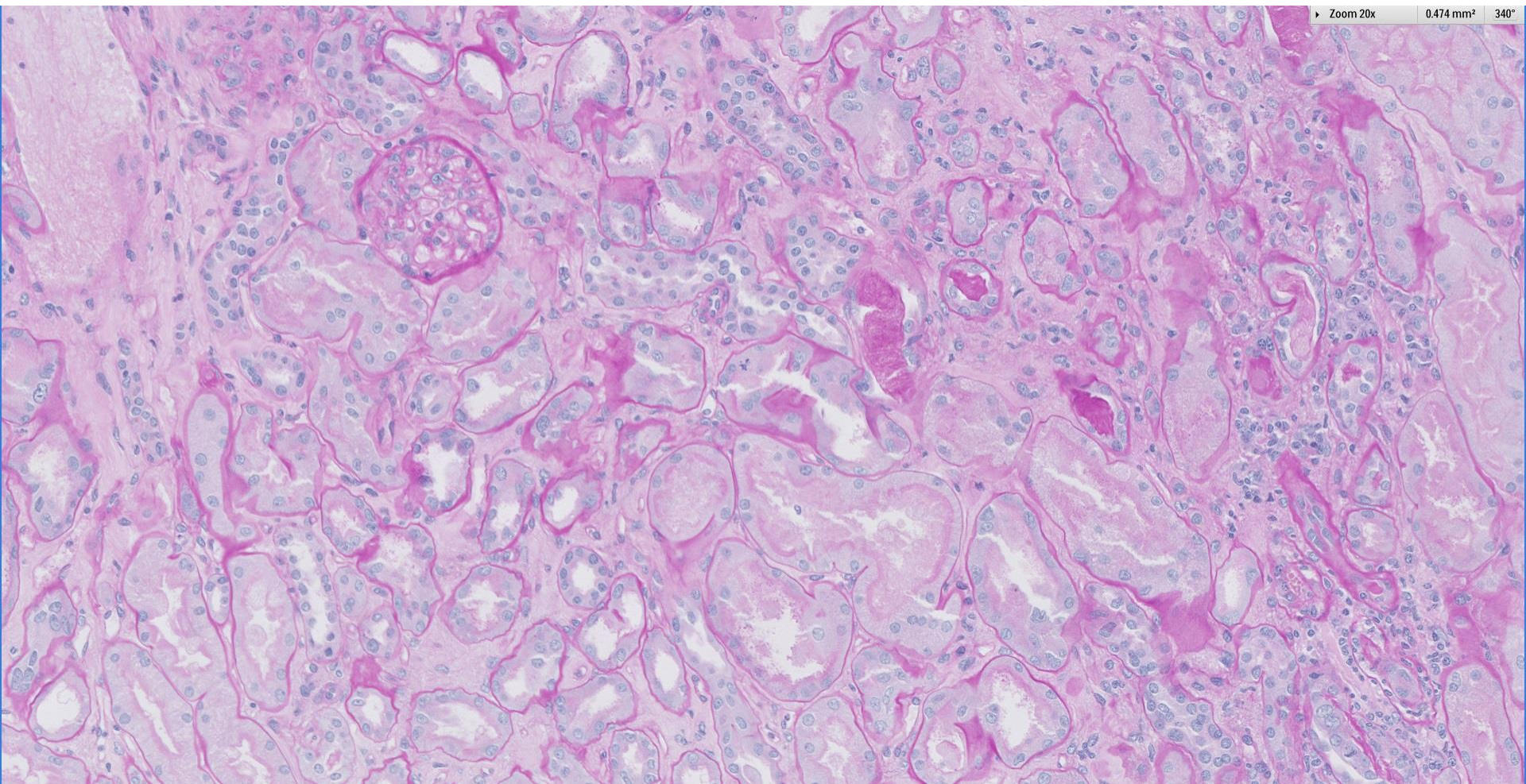
Case 73

78 year old Chinese man, history of diabetes. Presented with nephrotic syndrome, associated with mild haematuria and pyuria.

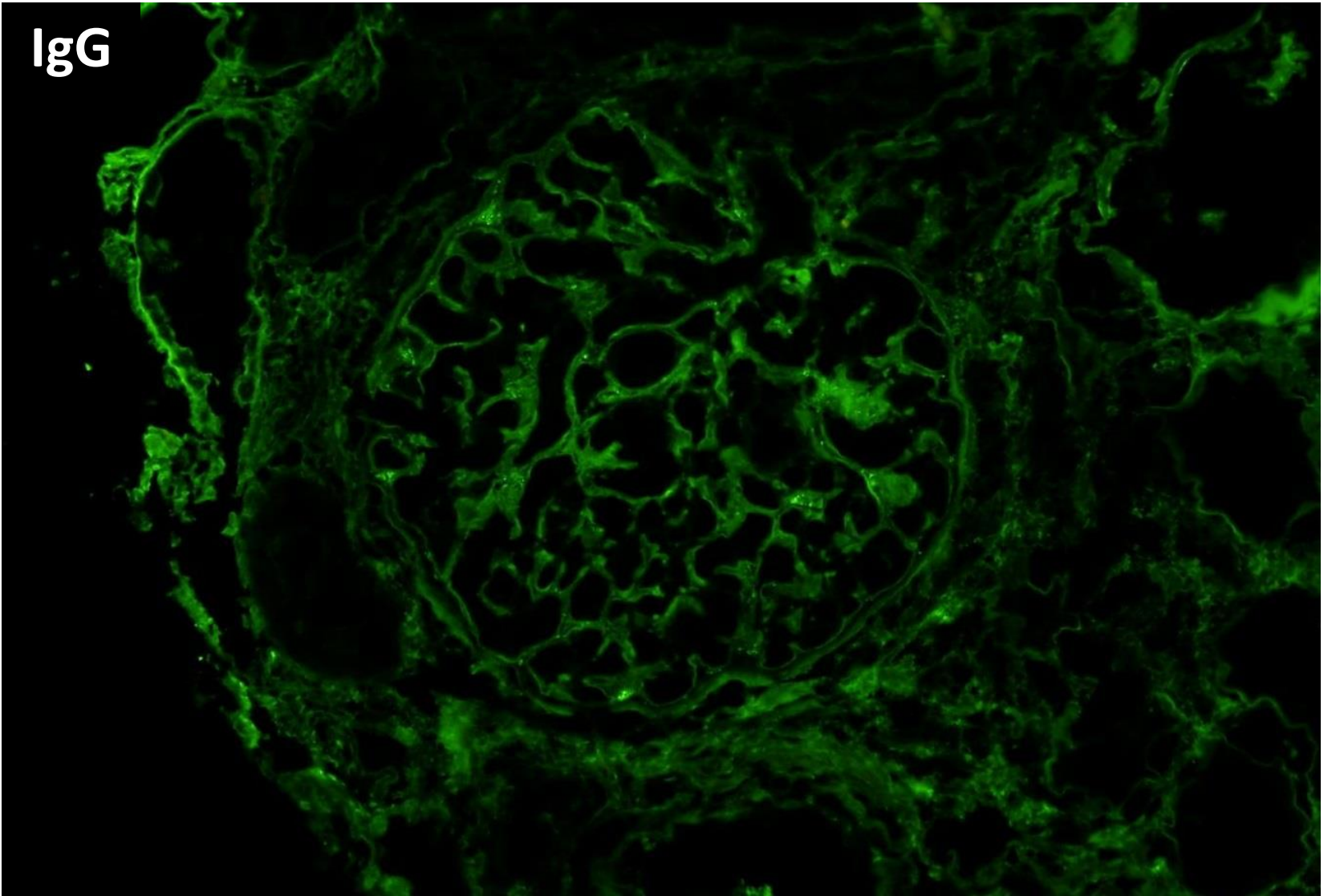




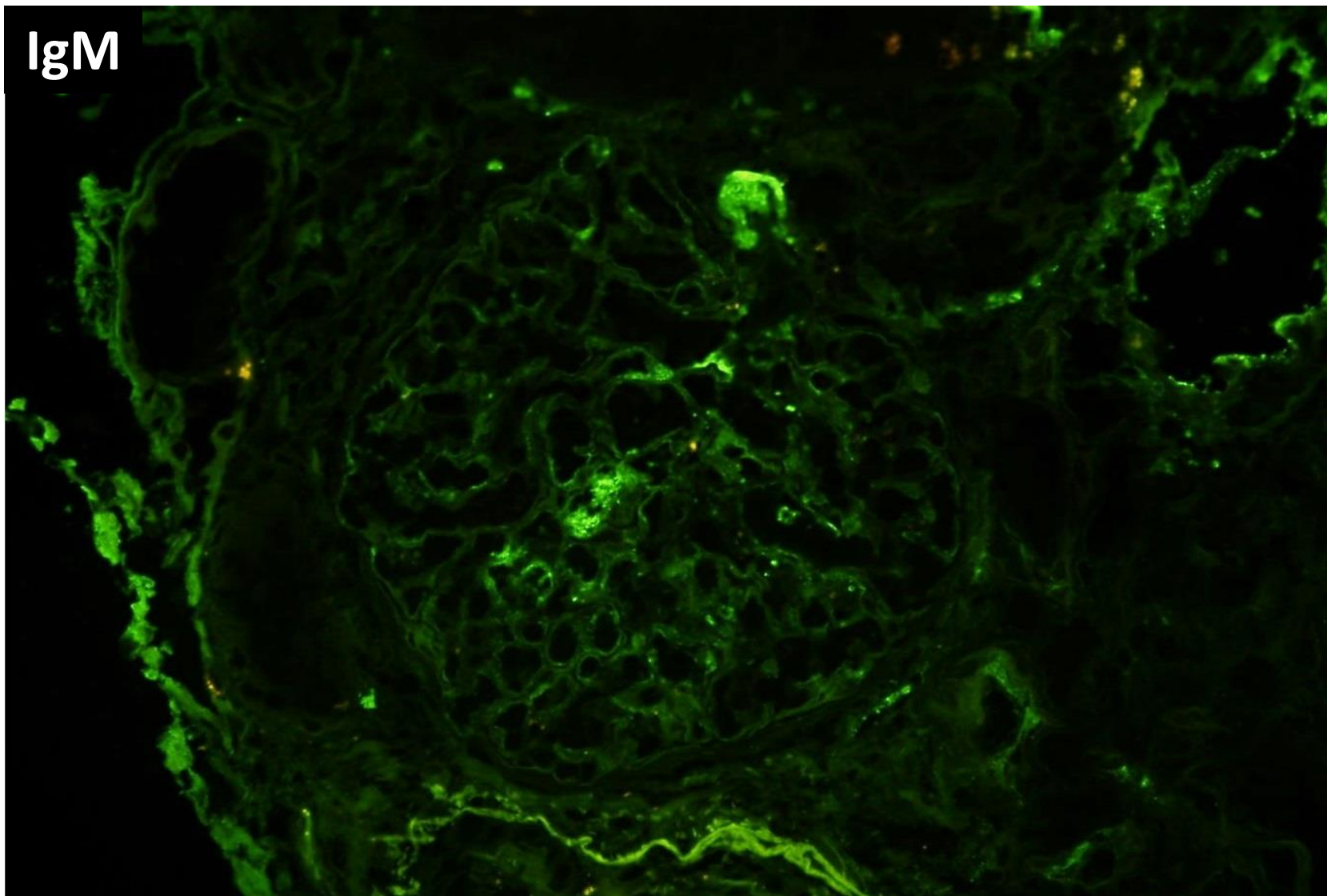




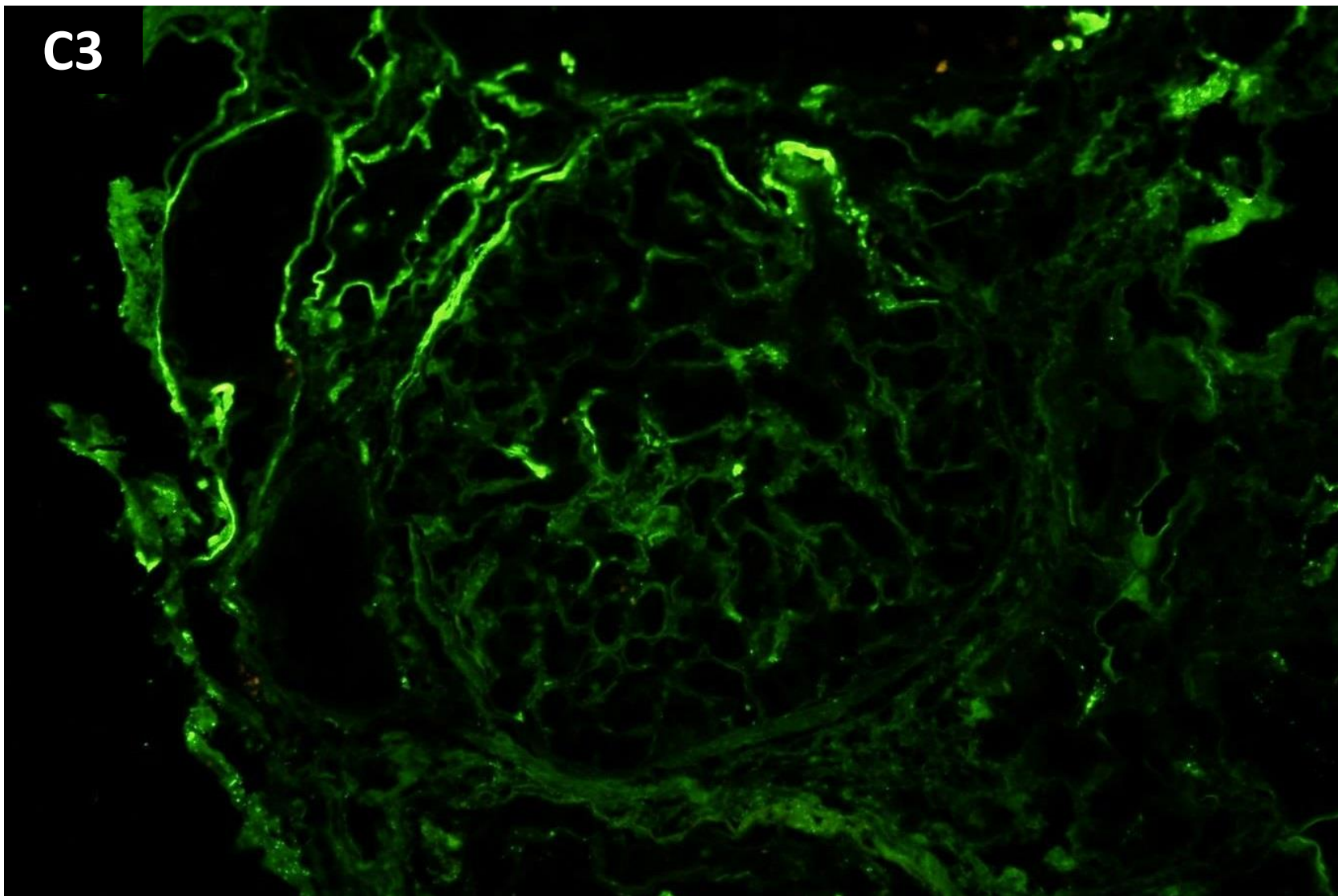
IgG

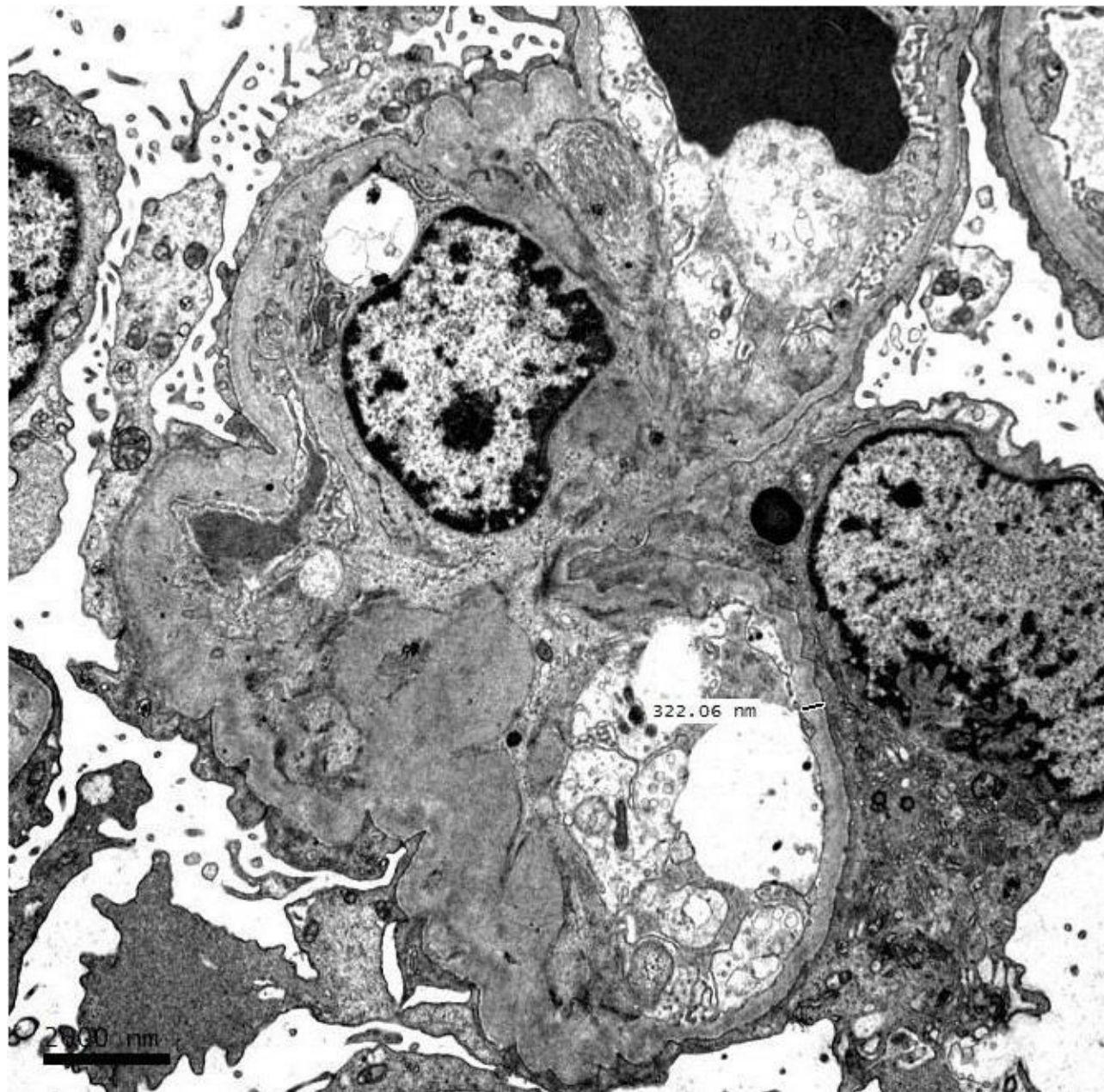


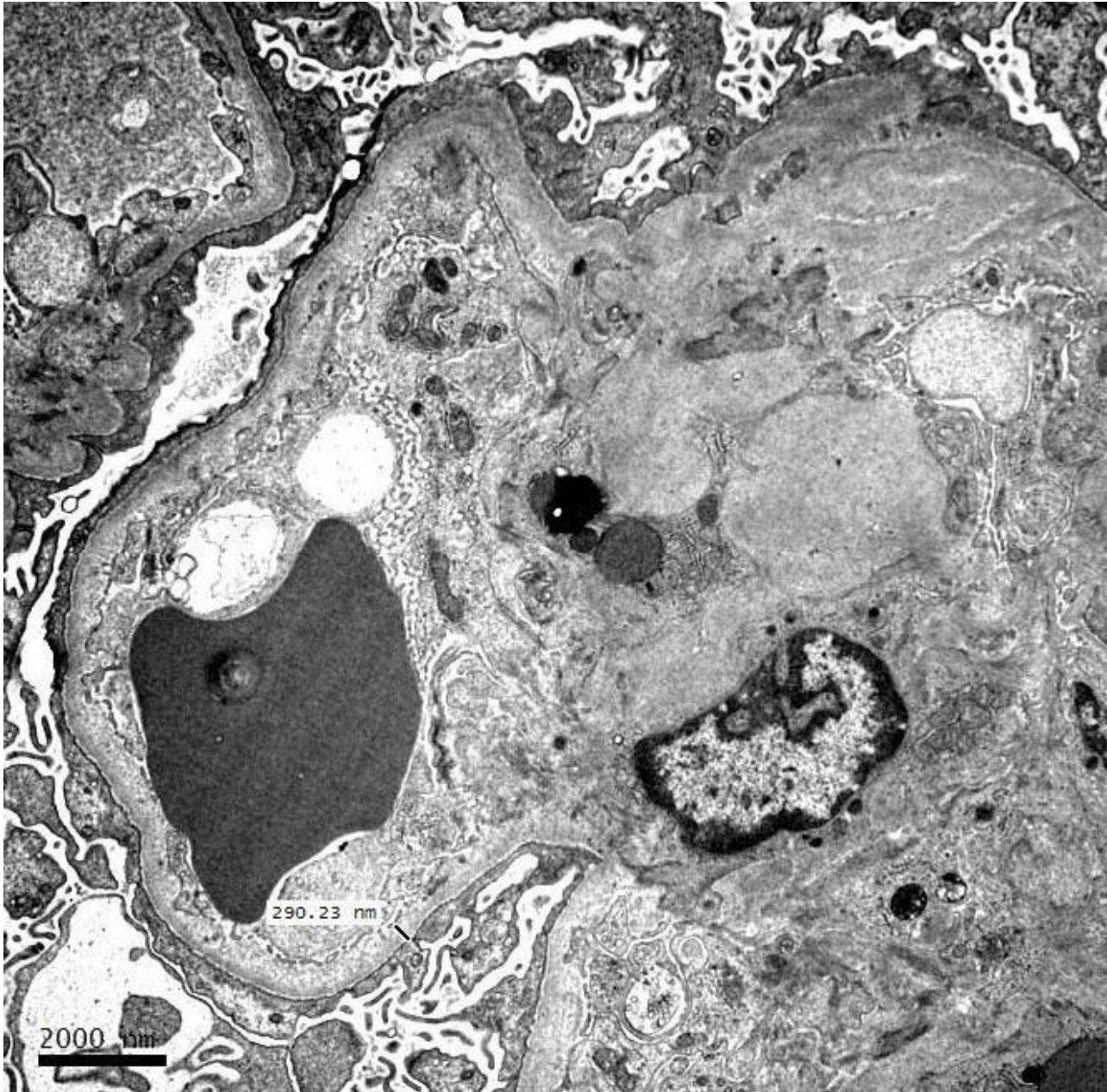
IgM

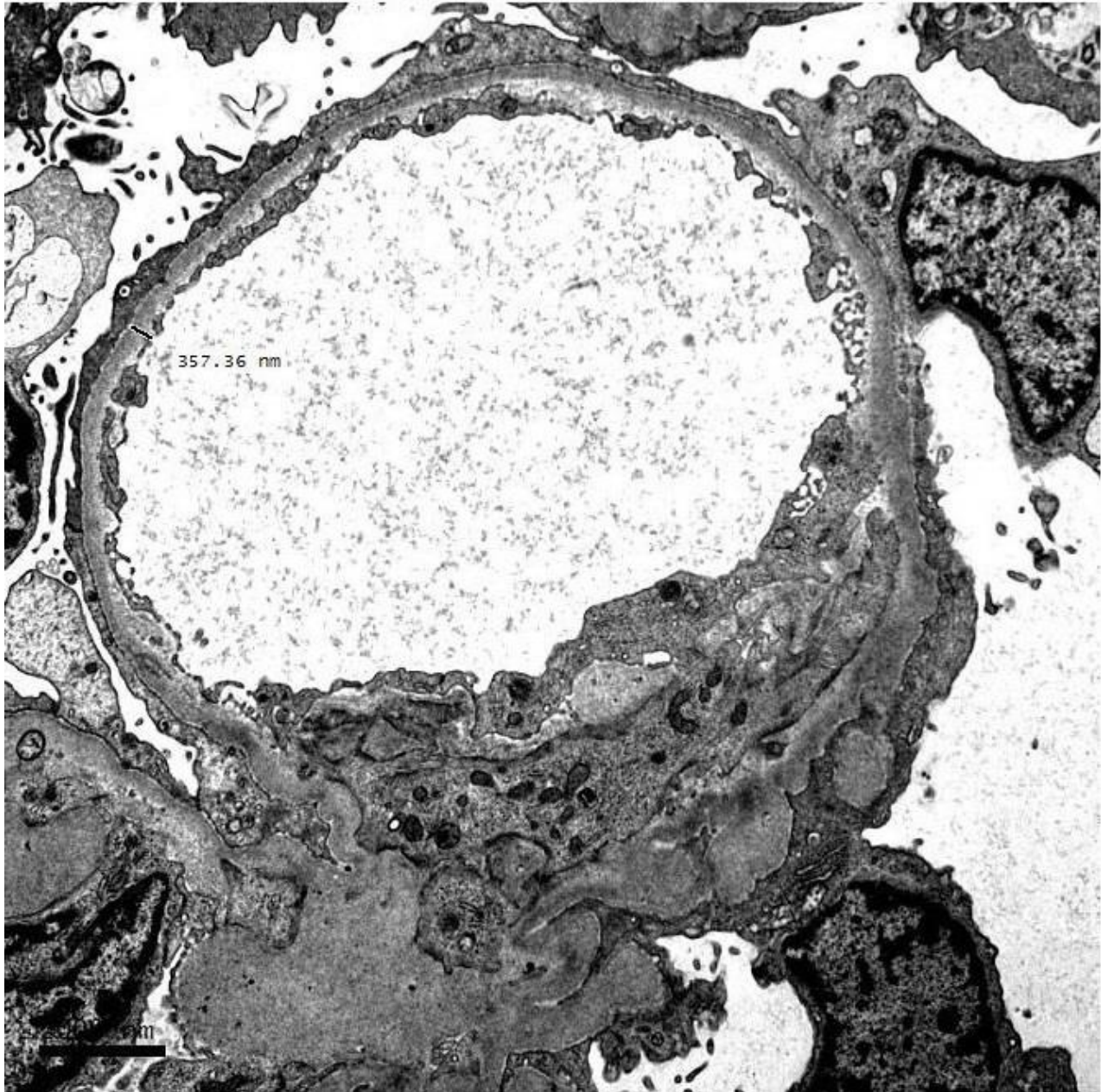


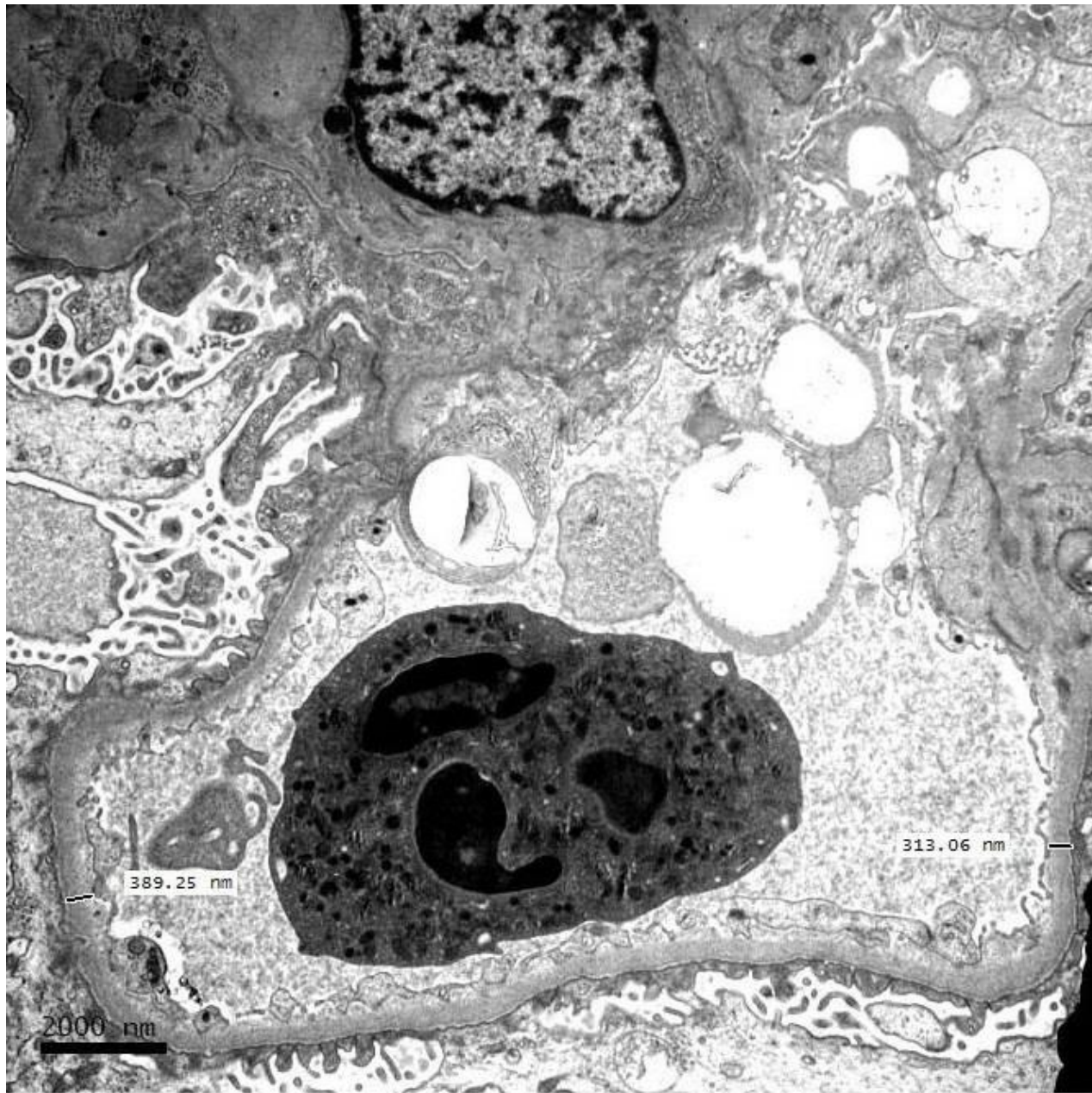
C3

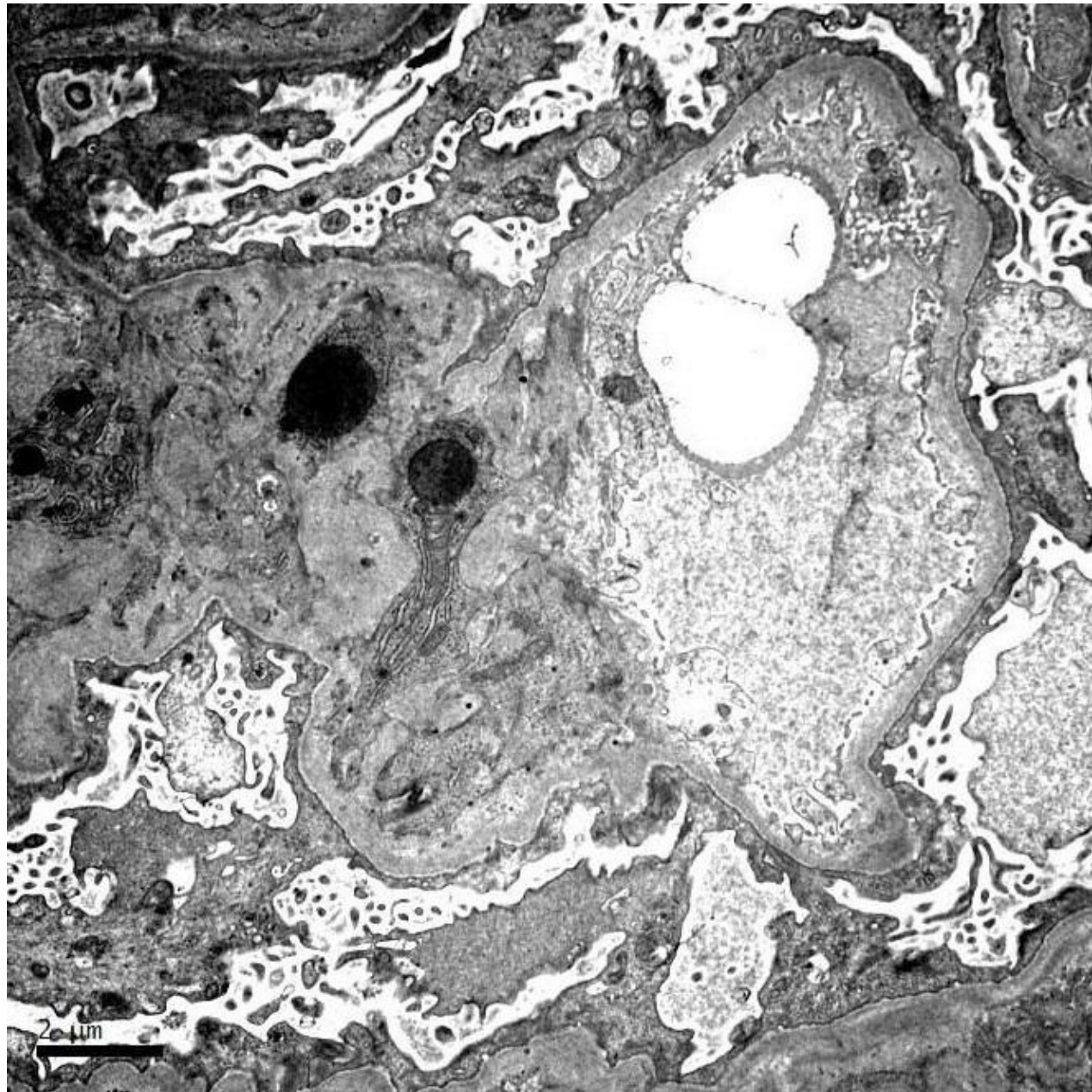














RENAL BIOPSY CLINICOPATHOLOGICAL WORKSHOP 2018



PATHOLOGY



Division of Pathology
Singapore General Hospital



Department of Renal Medicine
Singapore General Hospital



MEDICINE