

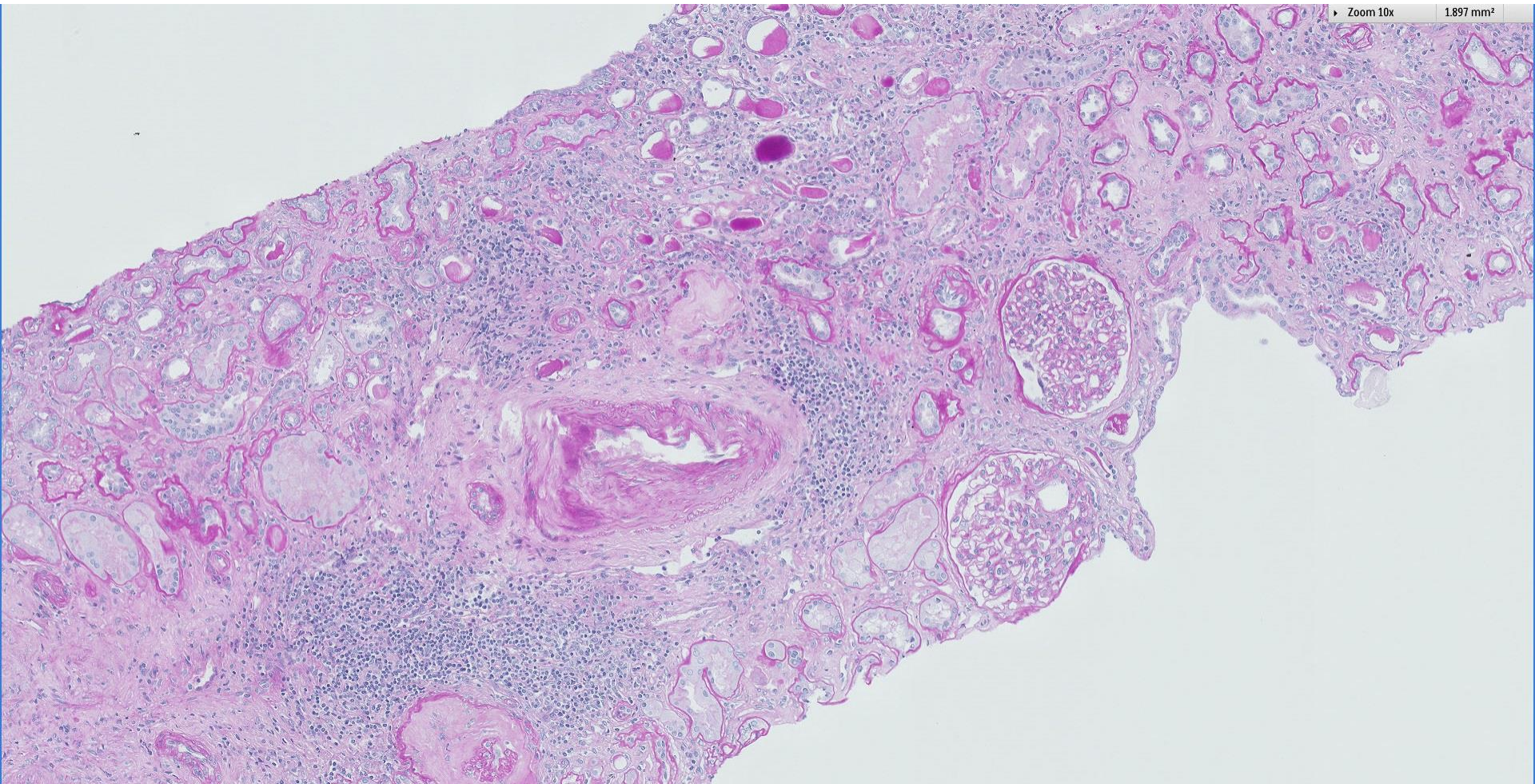
Case 72

69 year old Chinese lady, history of diabetes and hypertension. Presented with worsening renal function associated with subnephrotic range proteinuria, haematuria and pyuria.



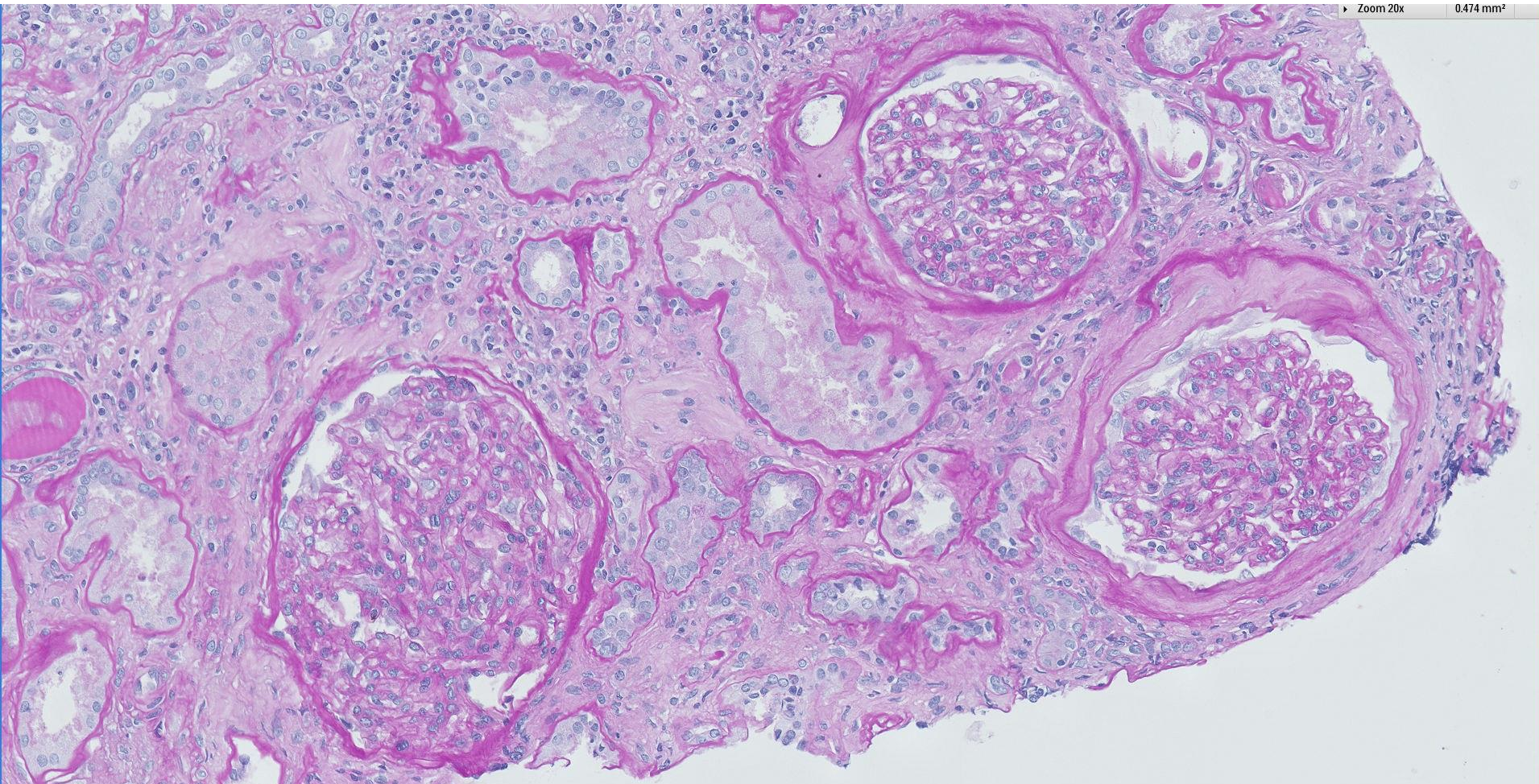
Zoom 10x

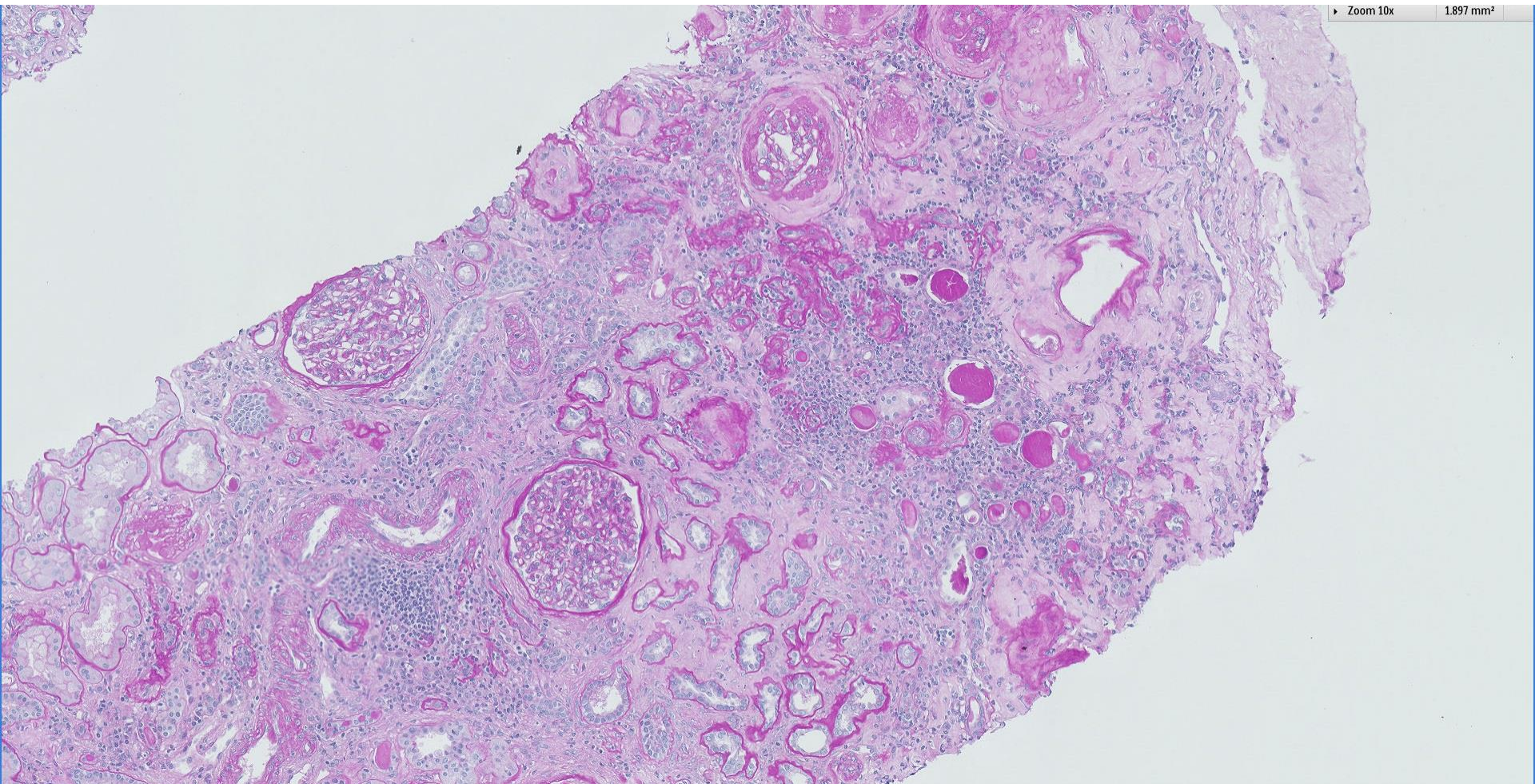
1.897 mm²



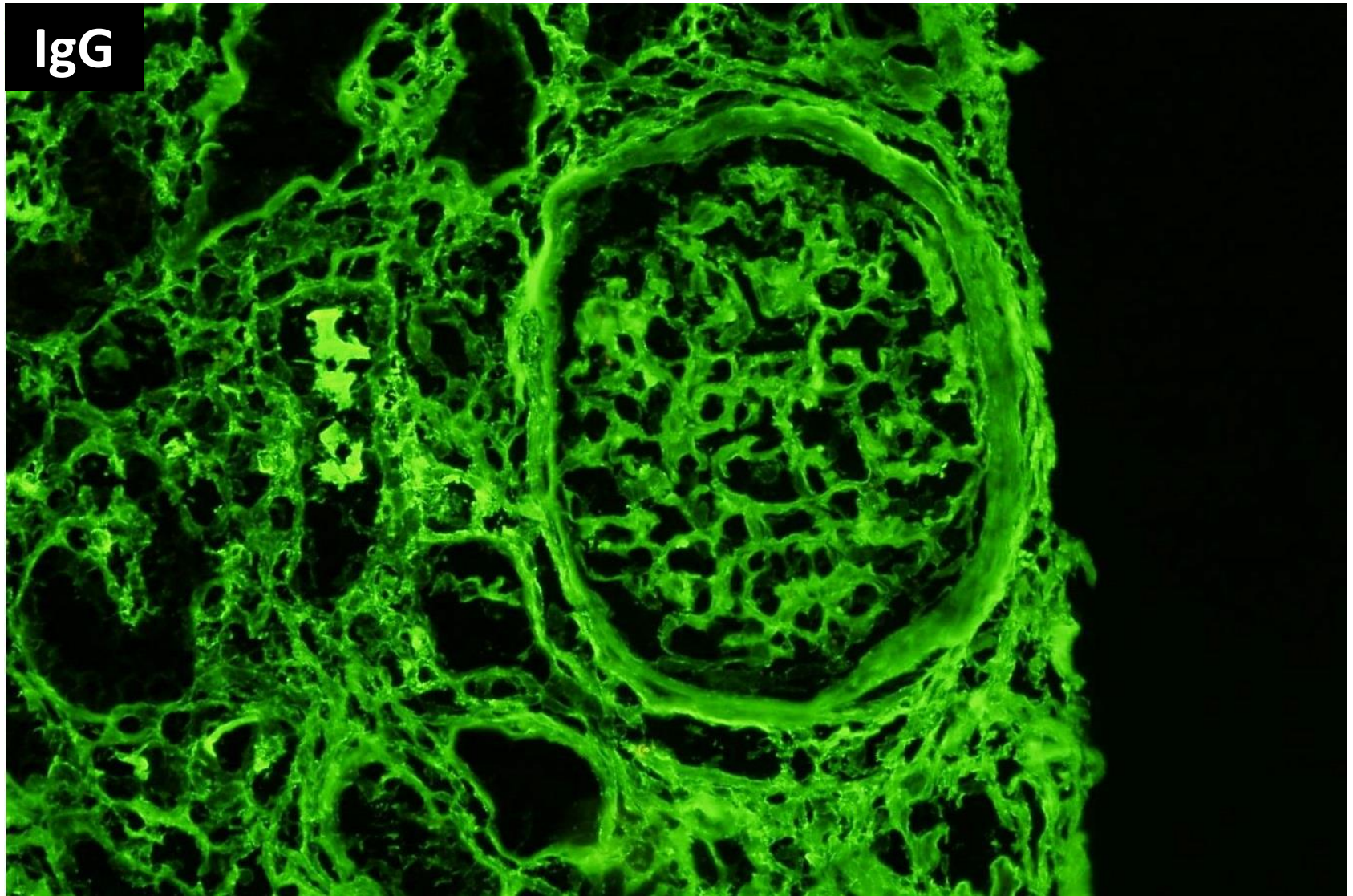
Zoom 20x

0.474 mm²

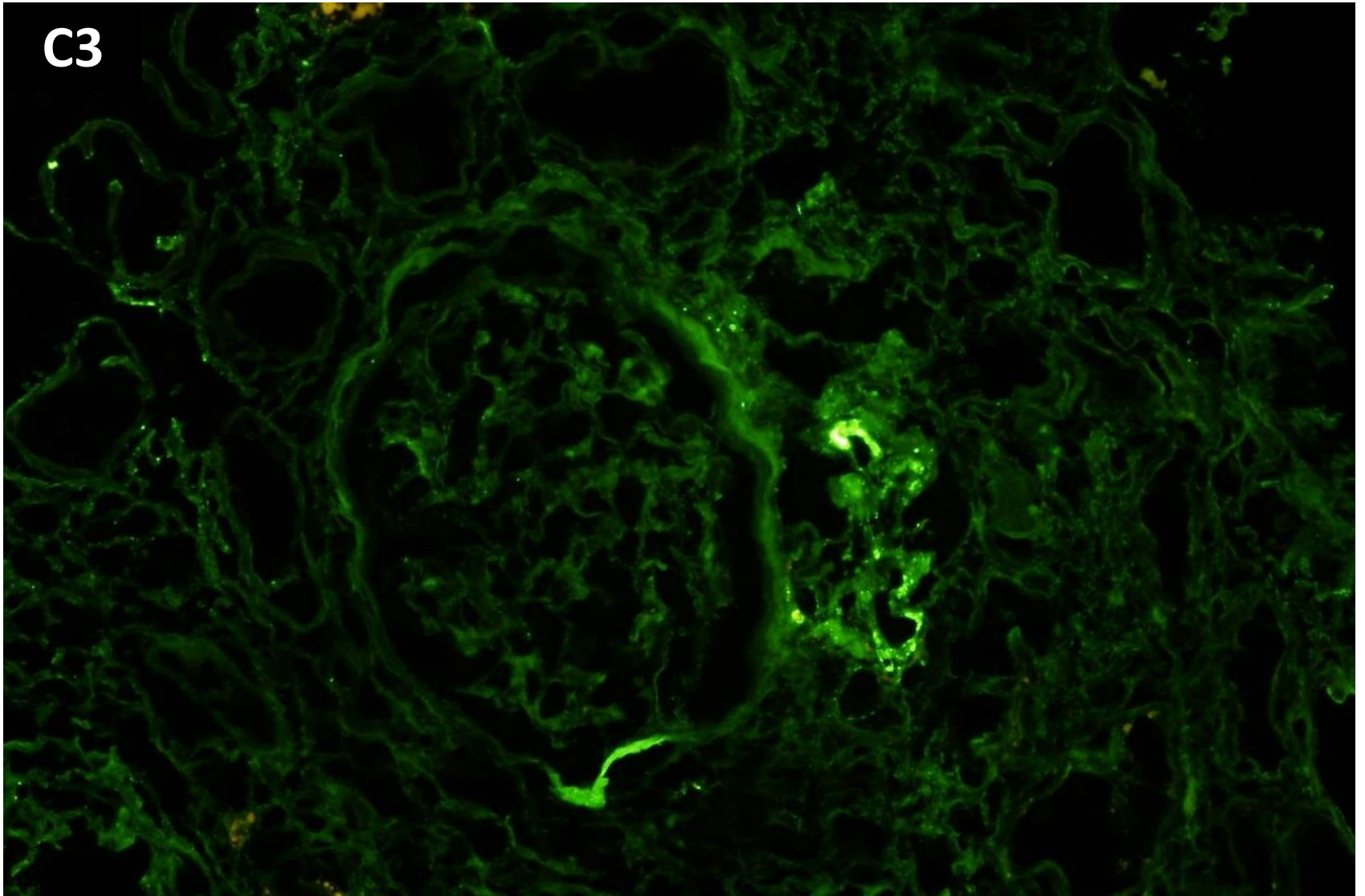




IgG



C3



No specimen received for electron microscopy.



RENAL BIOPSY CLINICOPATHOLOGICAL WORKSHOP 2018



PATHOLOGY



Division of Pathology
Singapore General Hospital



Department of Renal Medicine
Singapore General Hospital



MEDICINE