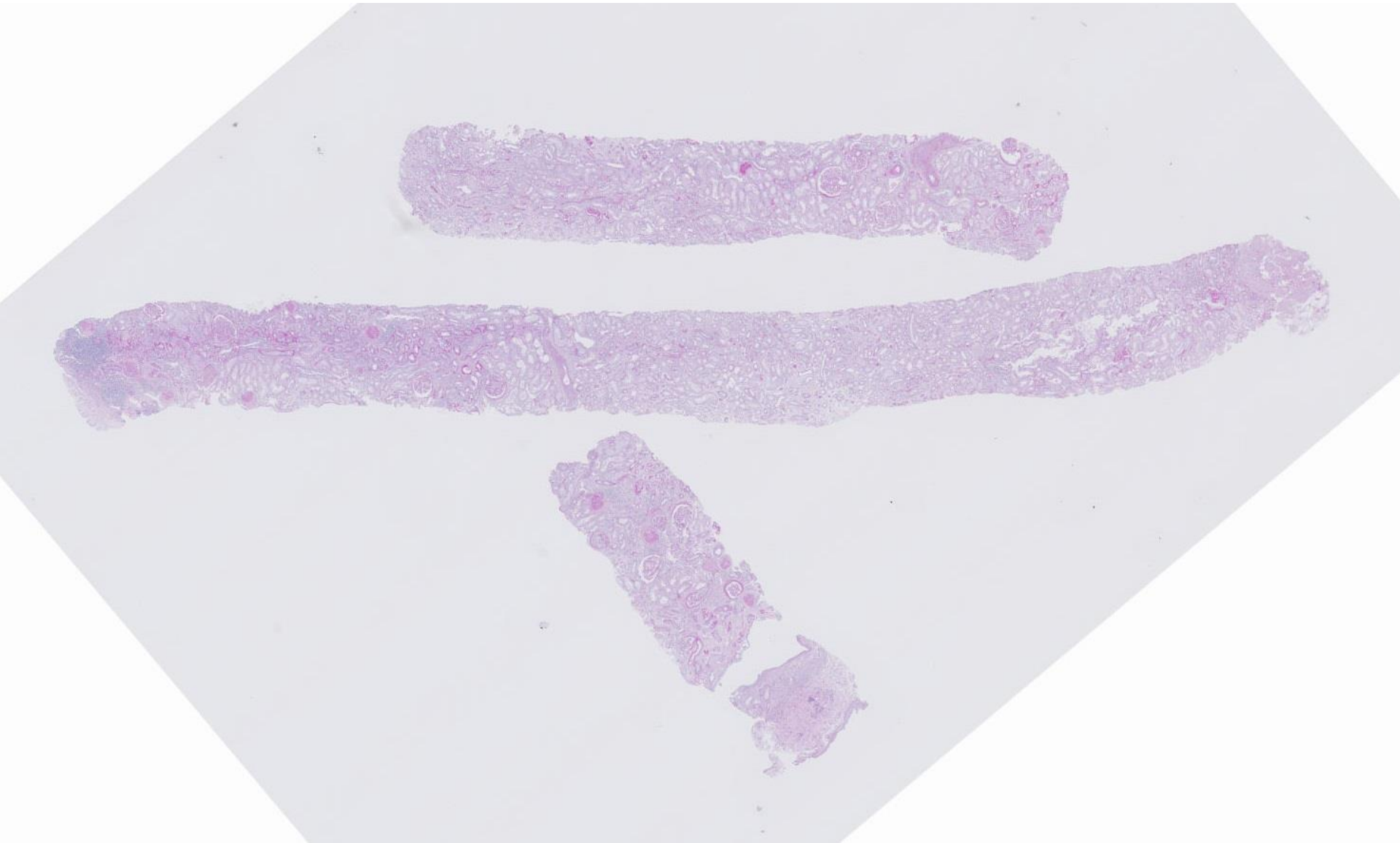
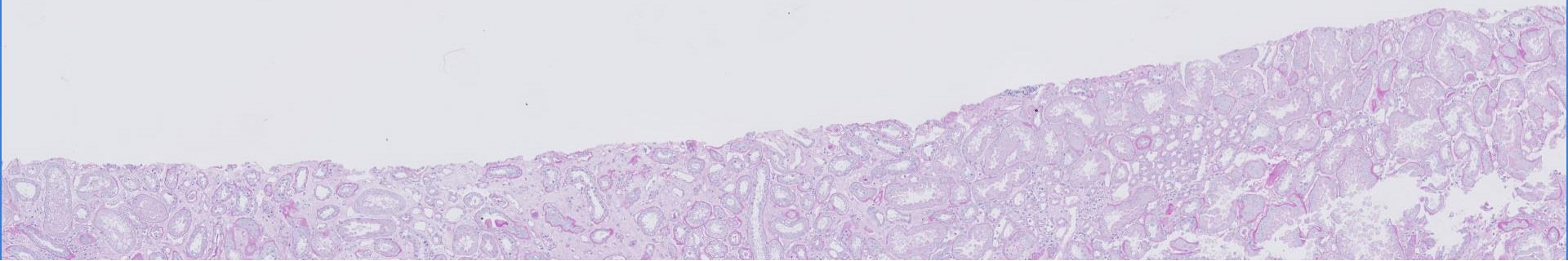
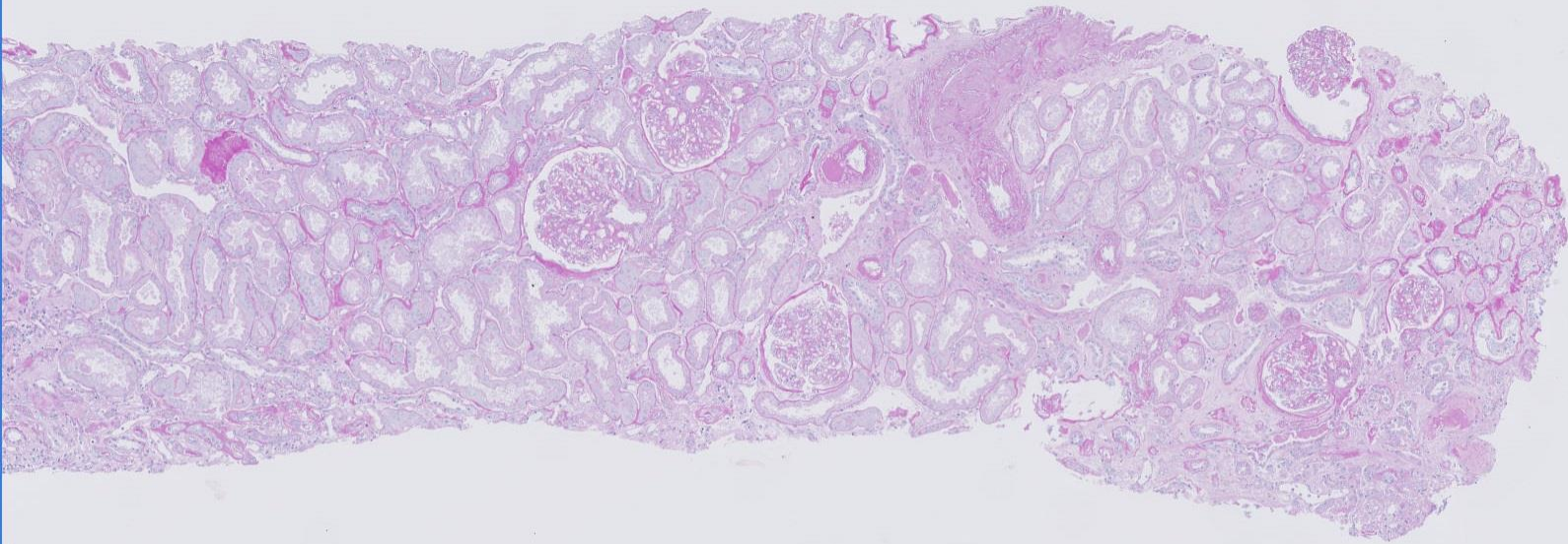
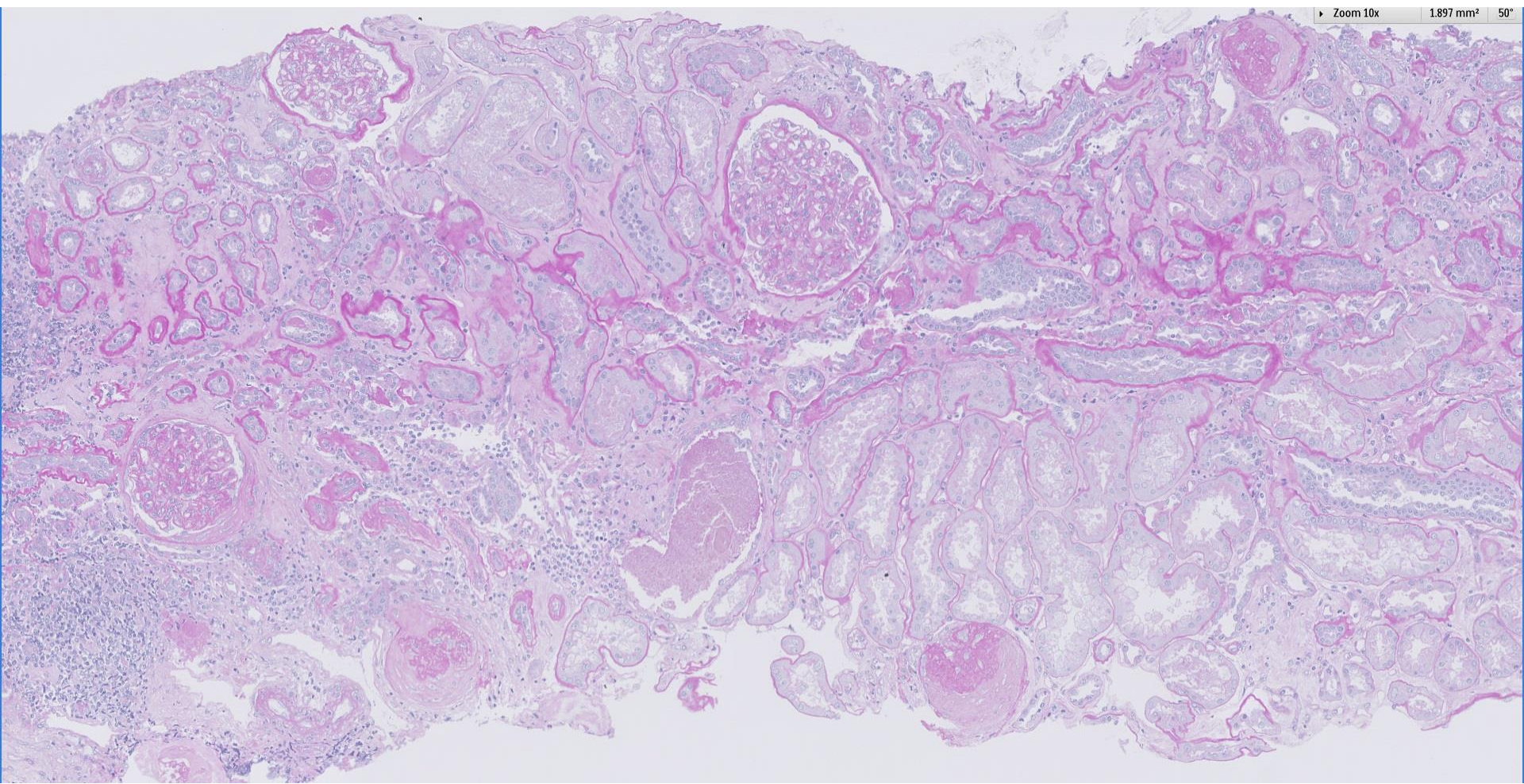


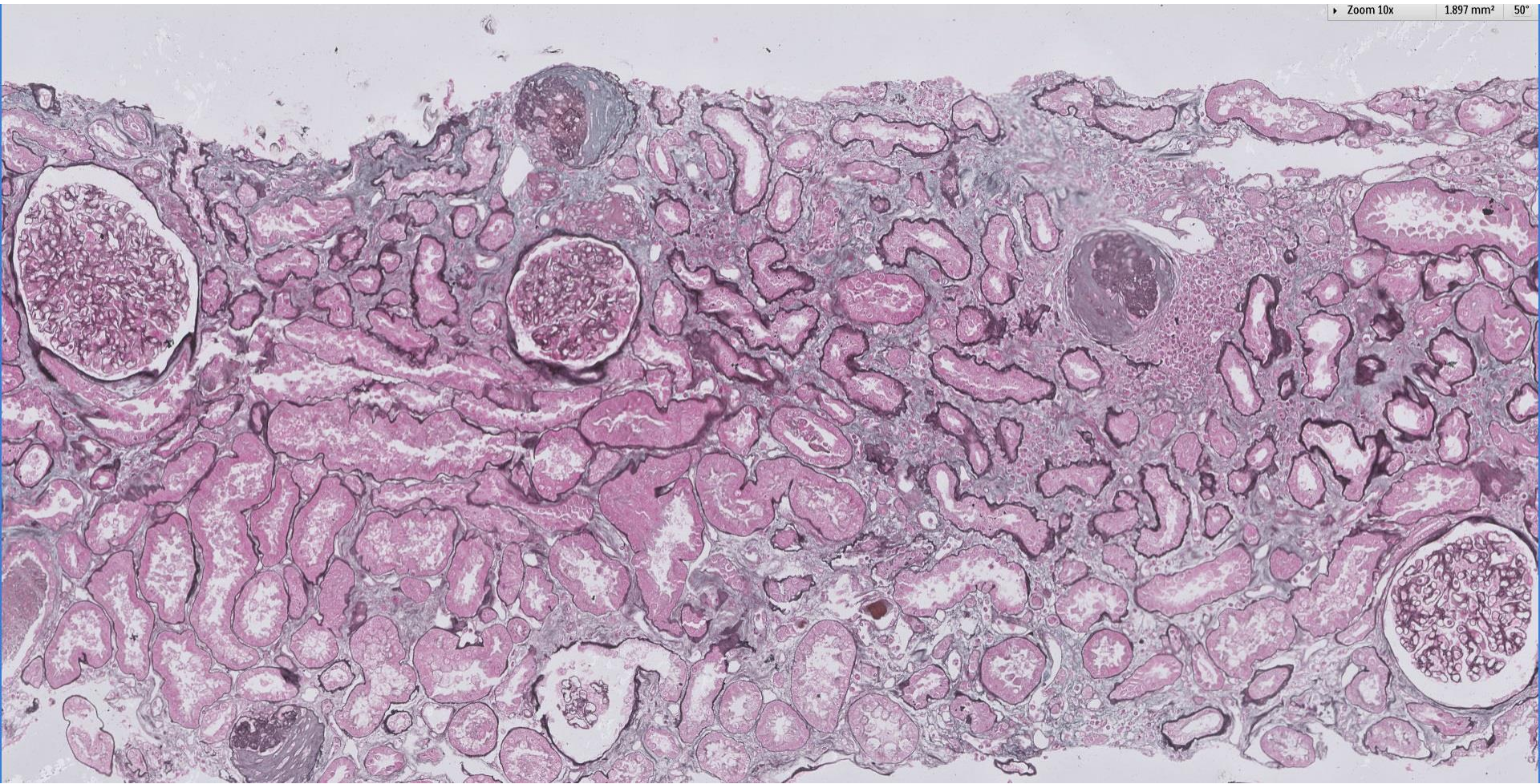
Case 71

65 year old Chinese lady, chronic myeloid leukaemia on Imatinib. Presented with haematuria and subnephrotic range proteinuria.

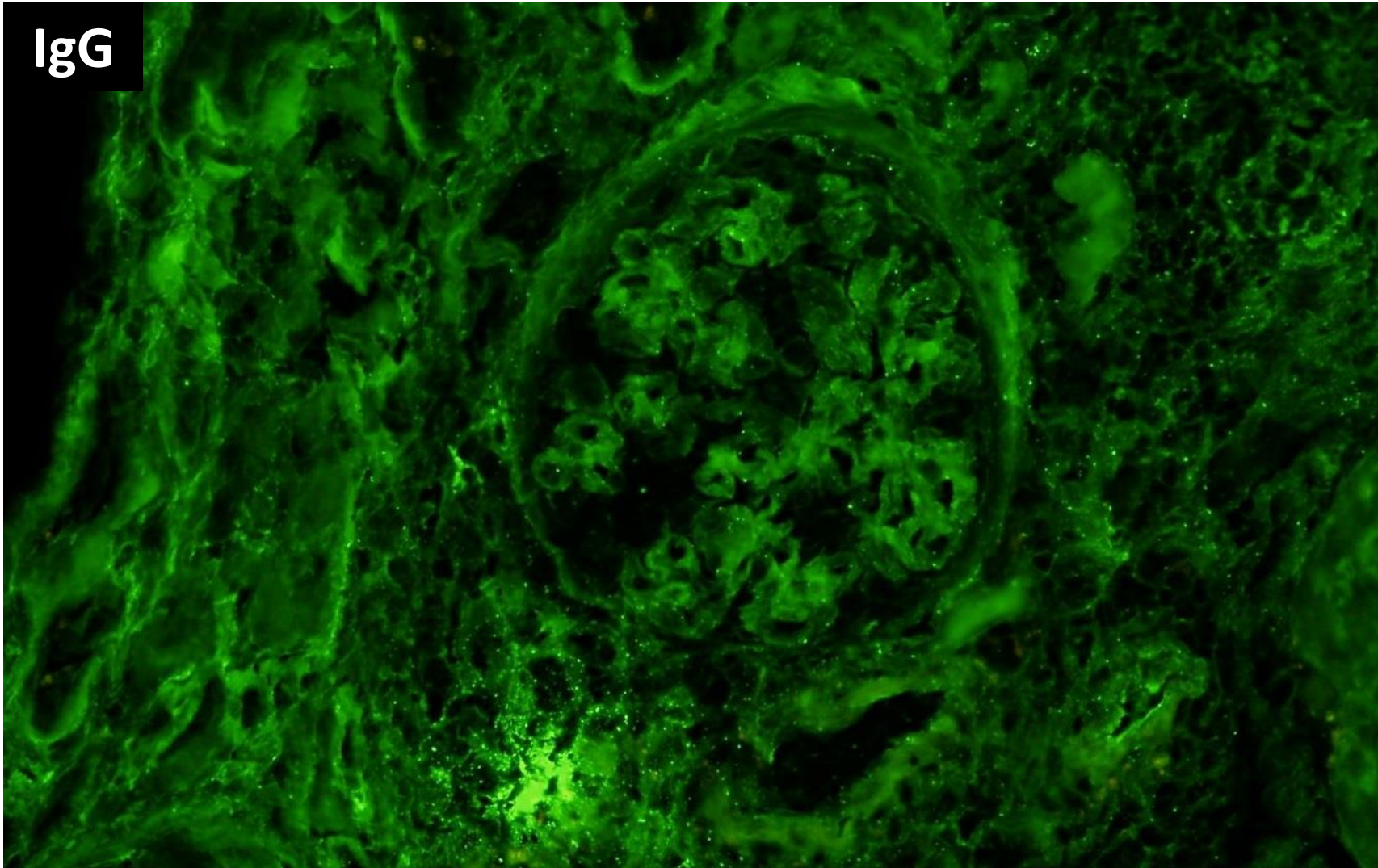




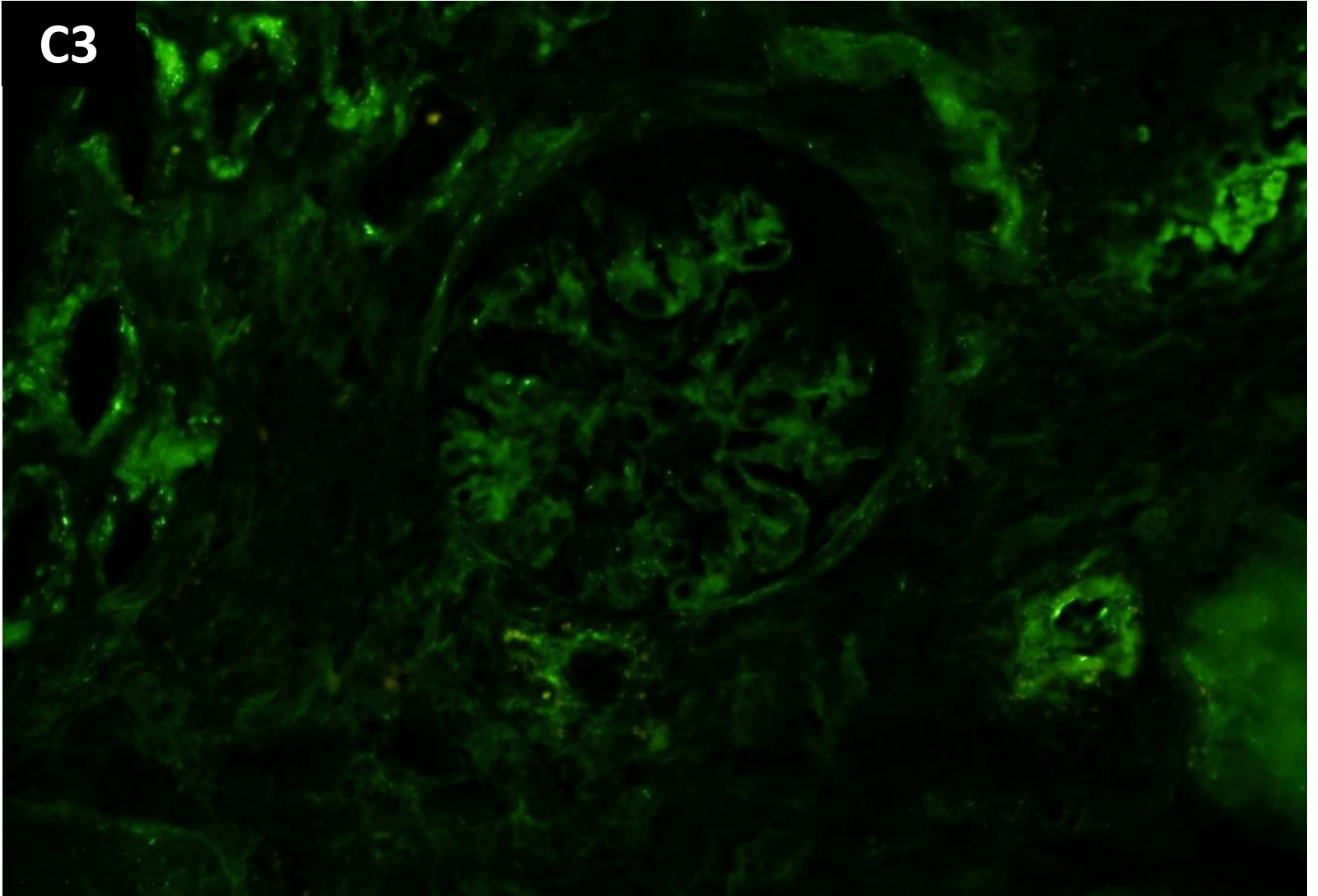


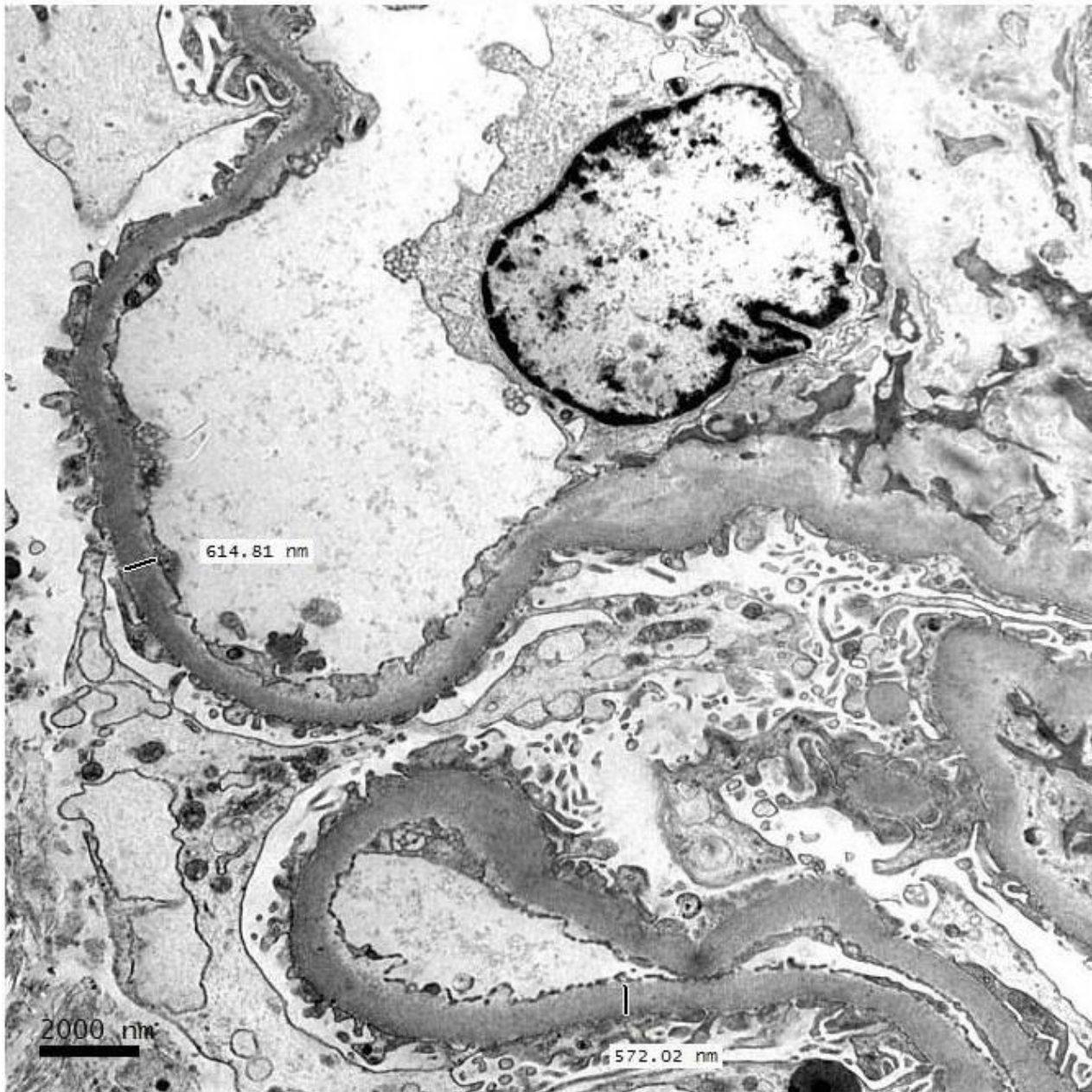


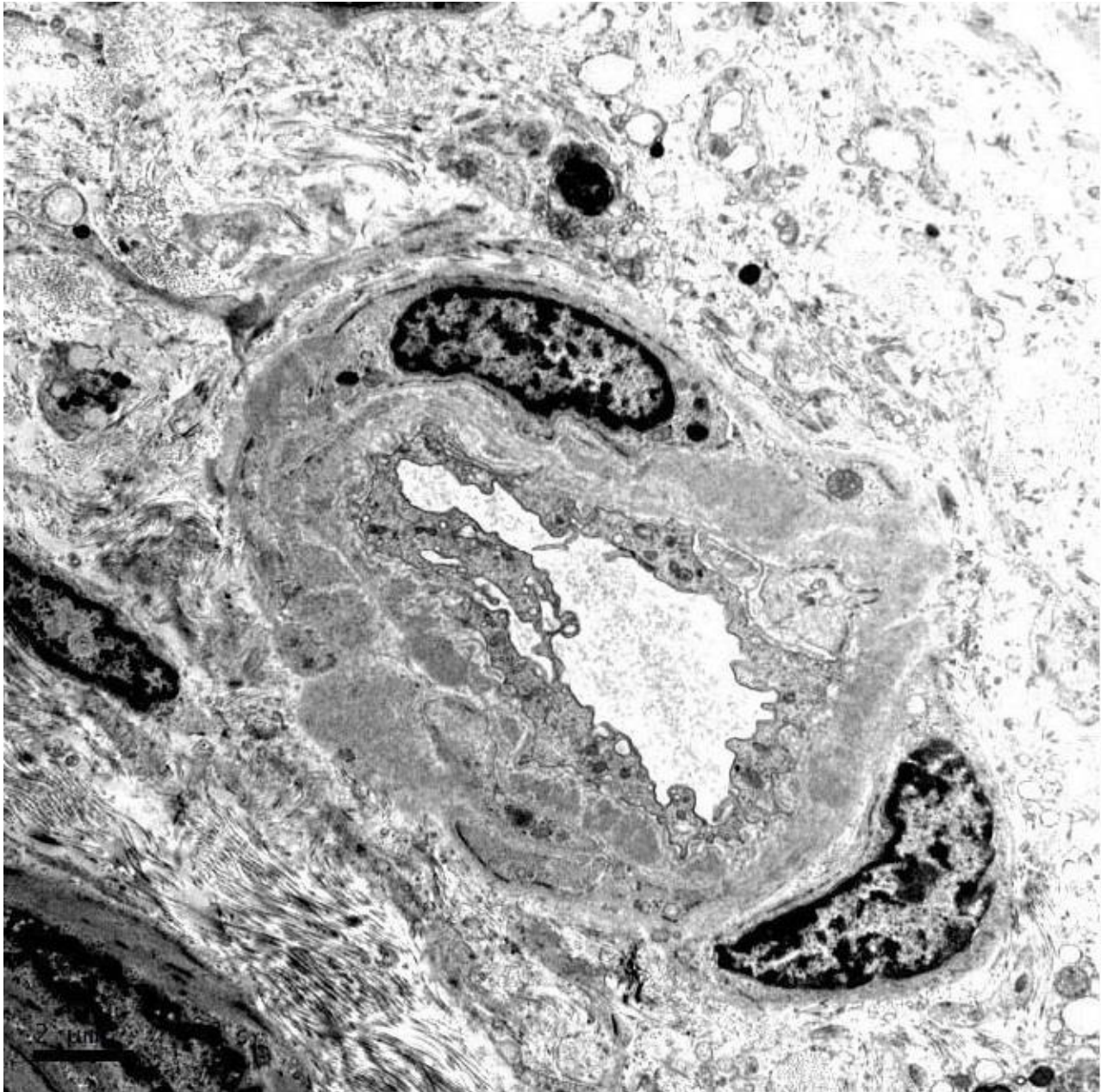
IgG



C3









RENAL BIOPSY CLINICOPATHOLOGICAL WORKSHOP 2018



PATHOLOGY



Division of Pathology
Singapore General Hospital



Department of Renal Medicine
Singapore General Hospital



MEDICINE