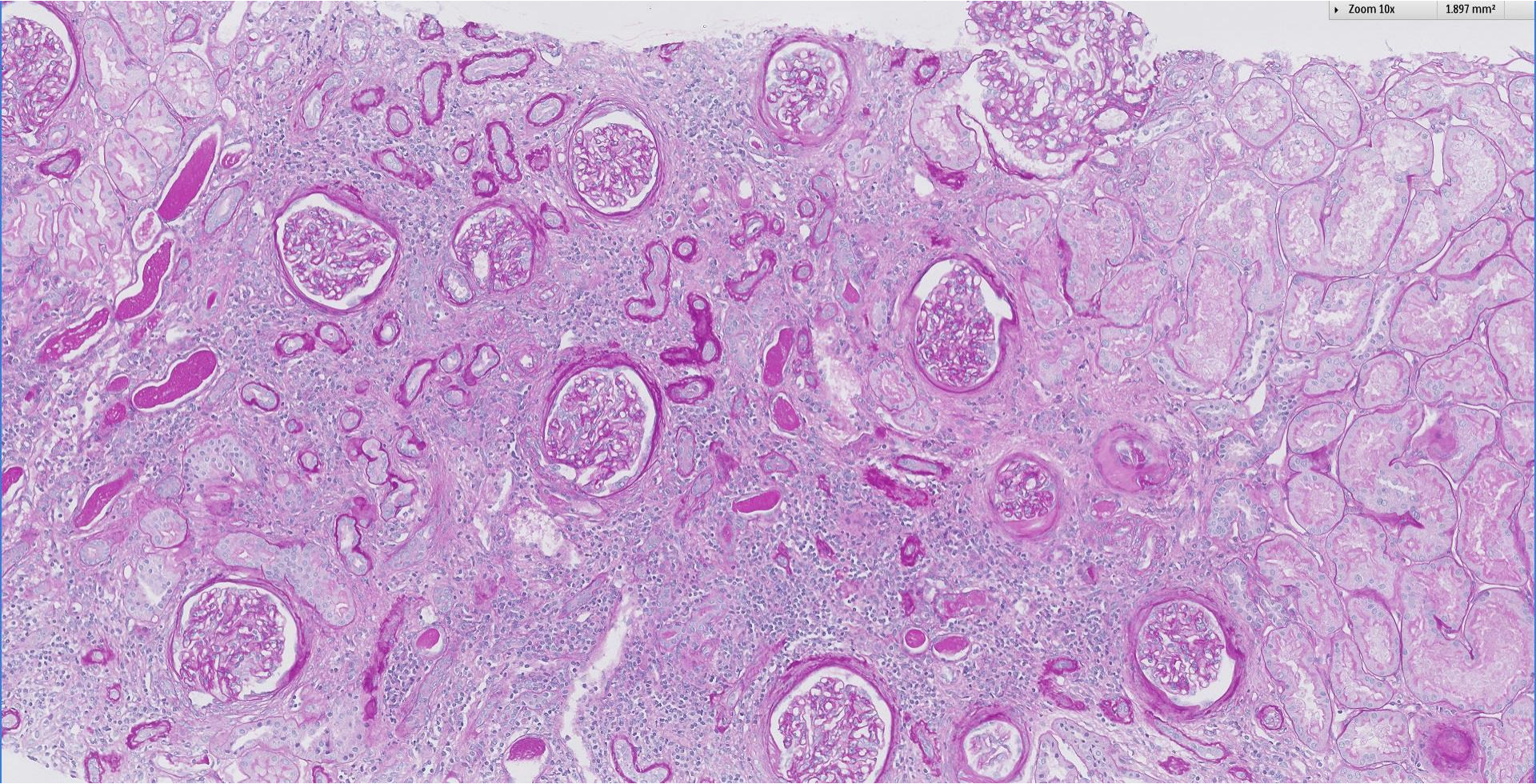
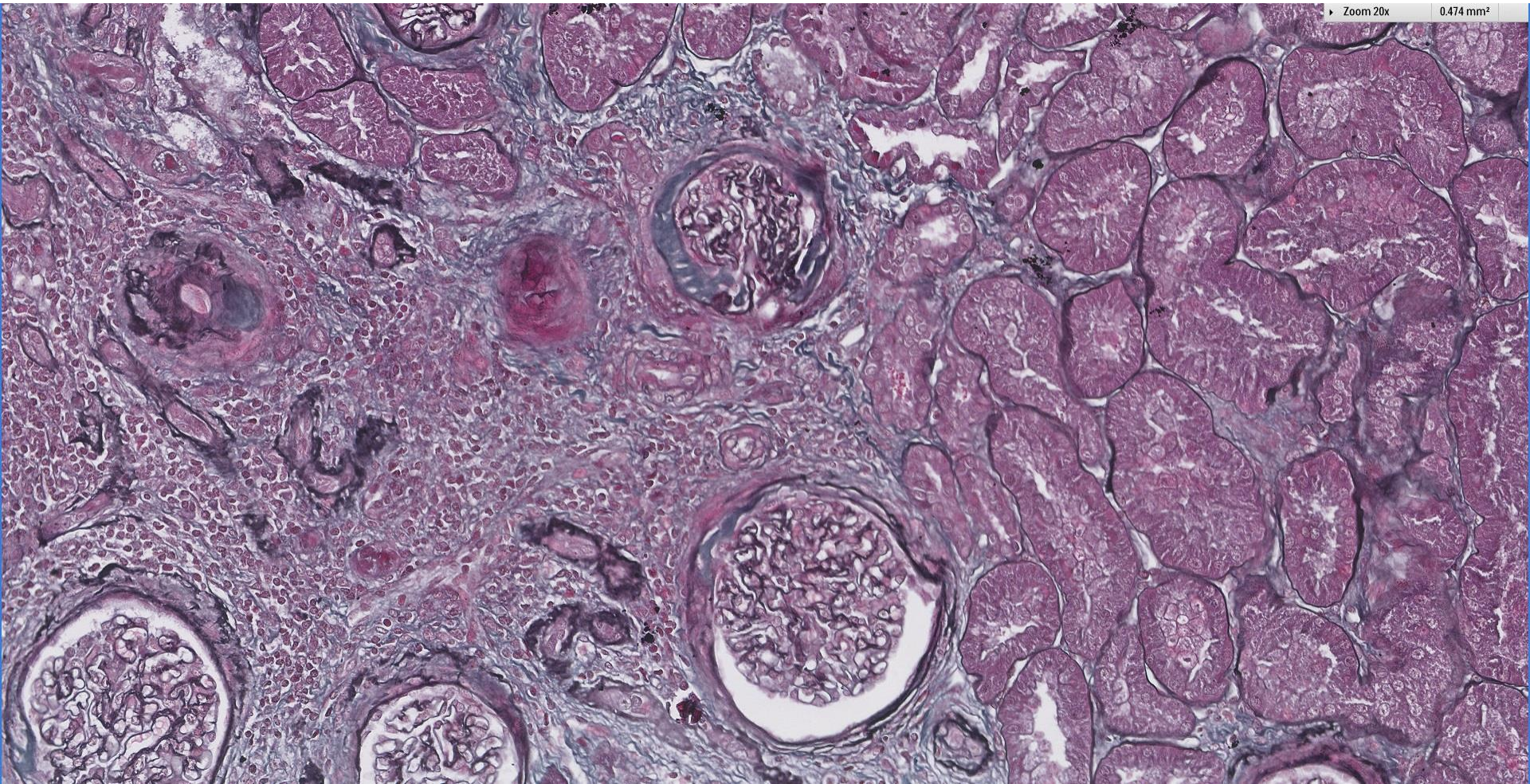


Case 70

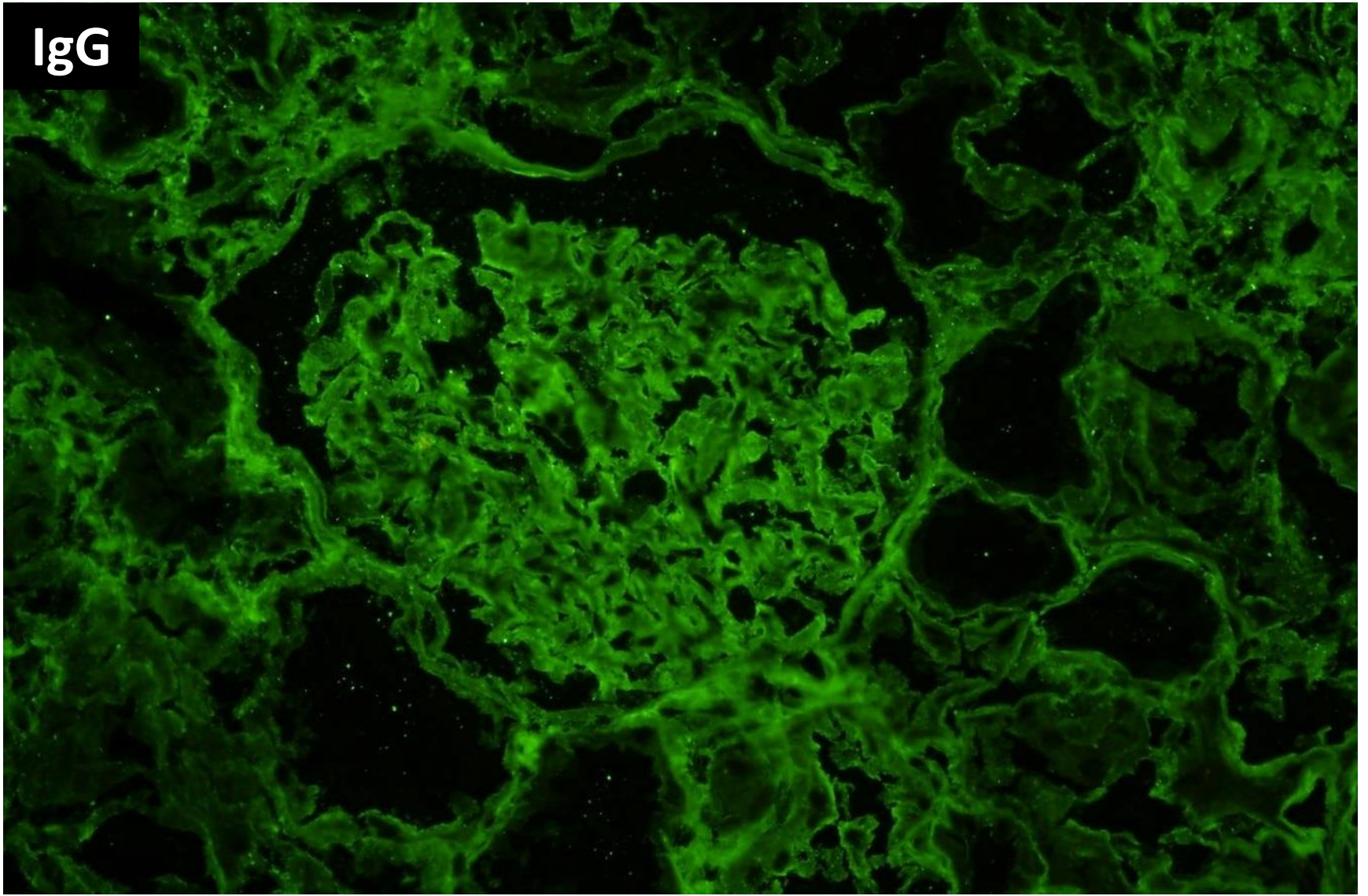
20 year old Chinese male, with no past medical history of note and not taking medications, was referred from the army for abnormal urinary findings. Urine RBC 5-20s, WBC 200-300, no proteinuria.



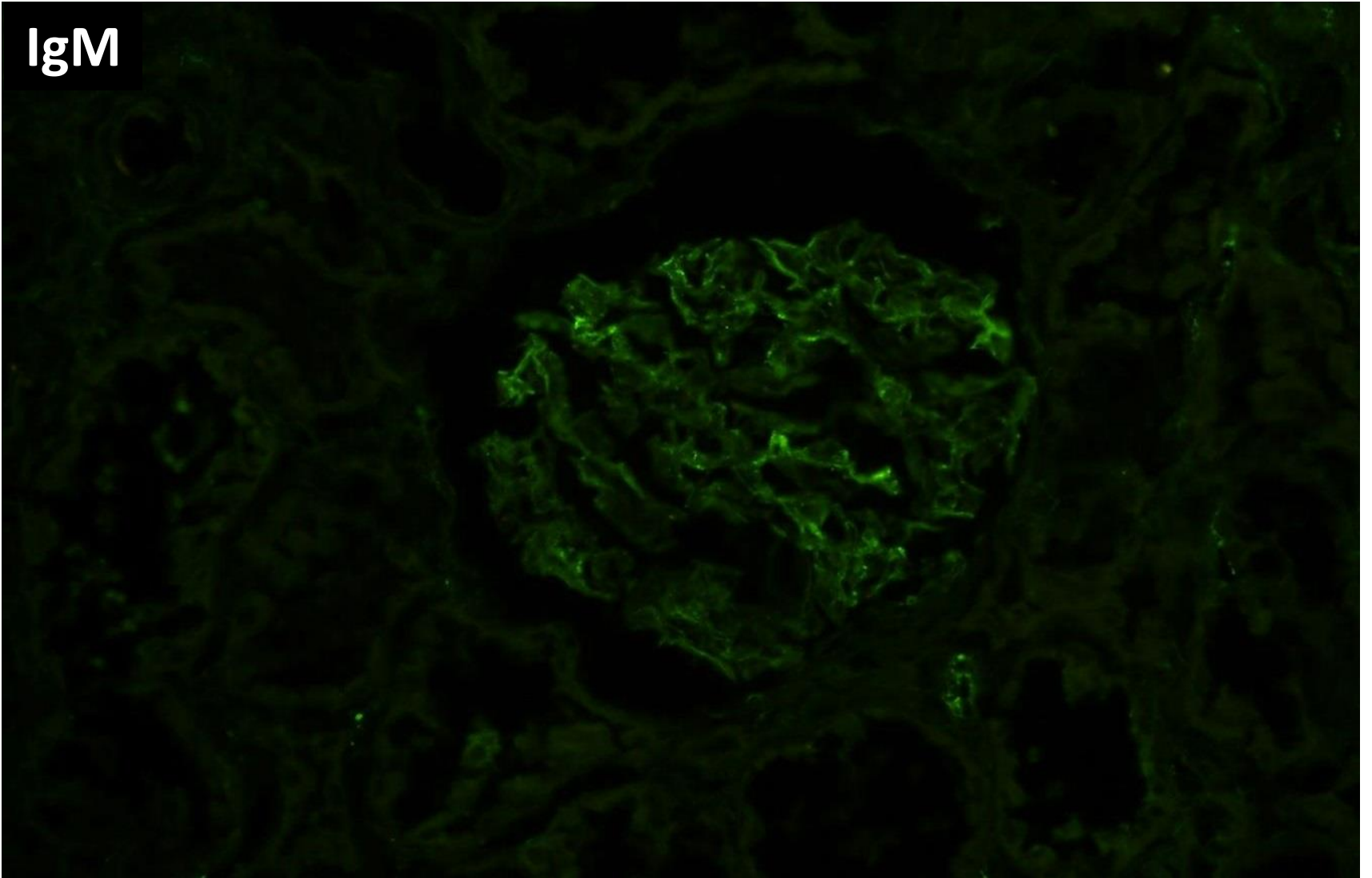




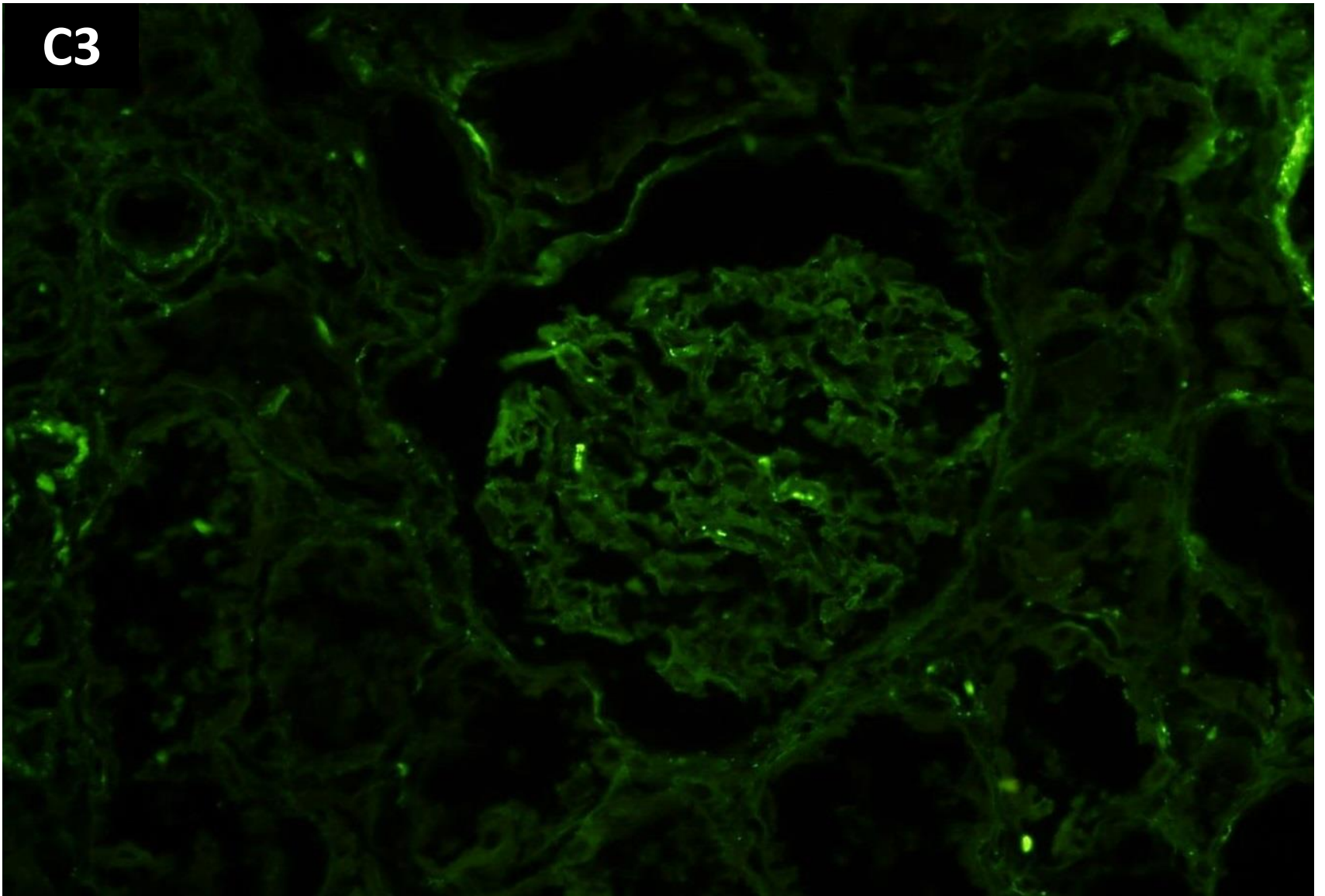
IgG

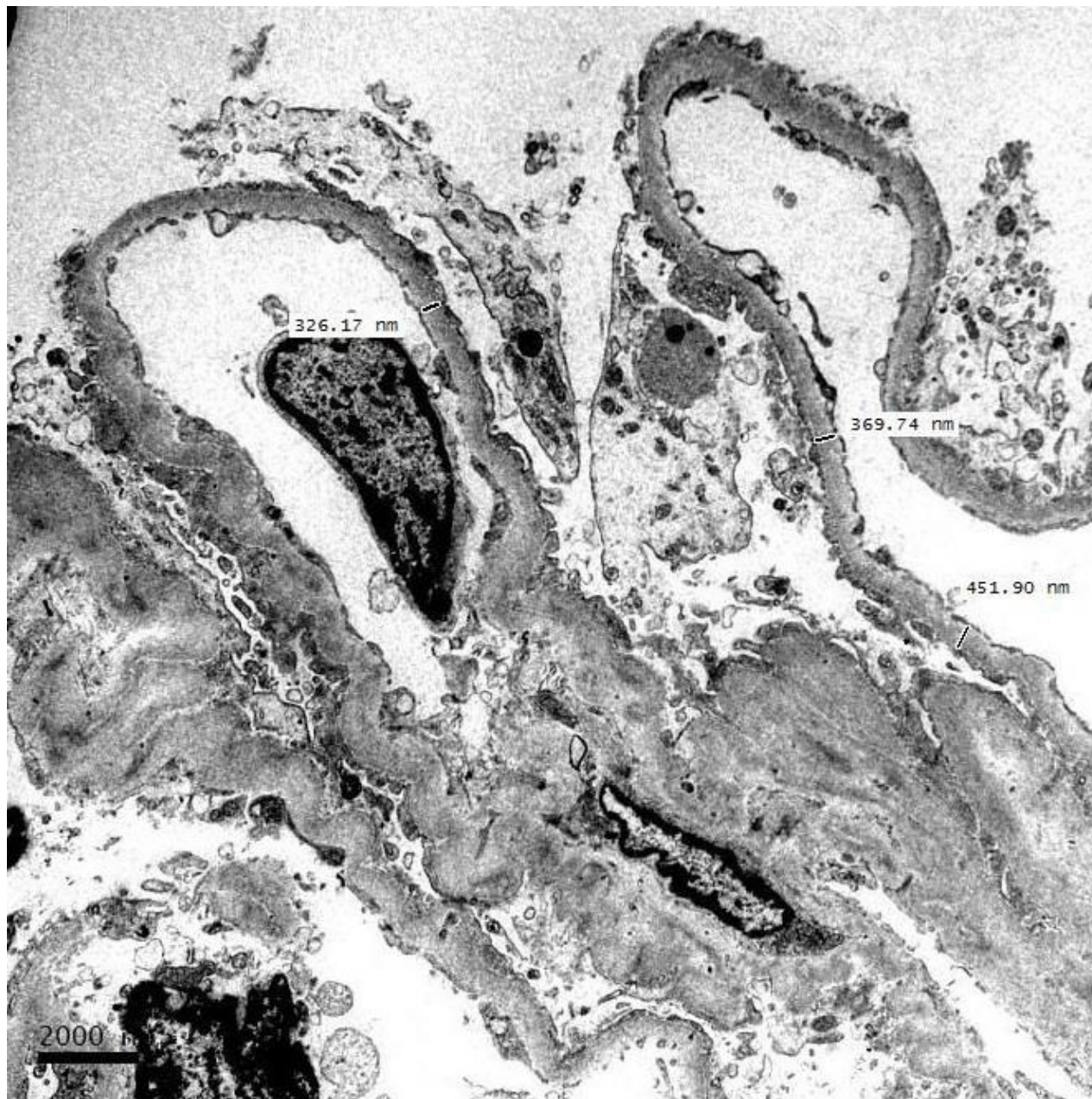


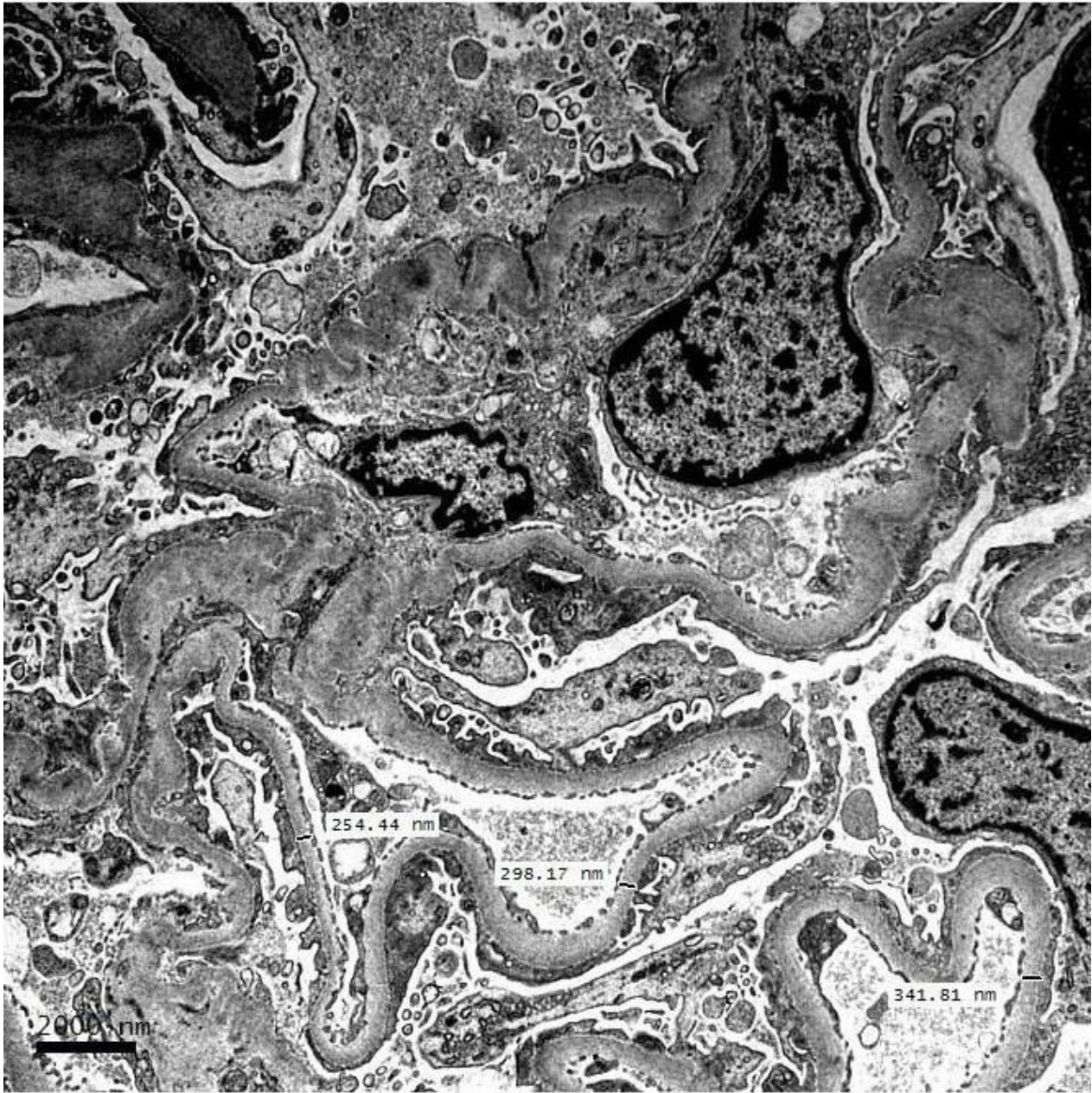
IgM



C3









RENAL BIOPSY CLINICOPATHOLOGICAL WORKSHOP 2018



PATHOLOGY



Division of Pathology
Singapore General Hospital



Department of Renal Medicine
Singapore General Hospital



MEDICINE