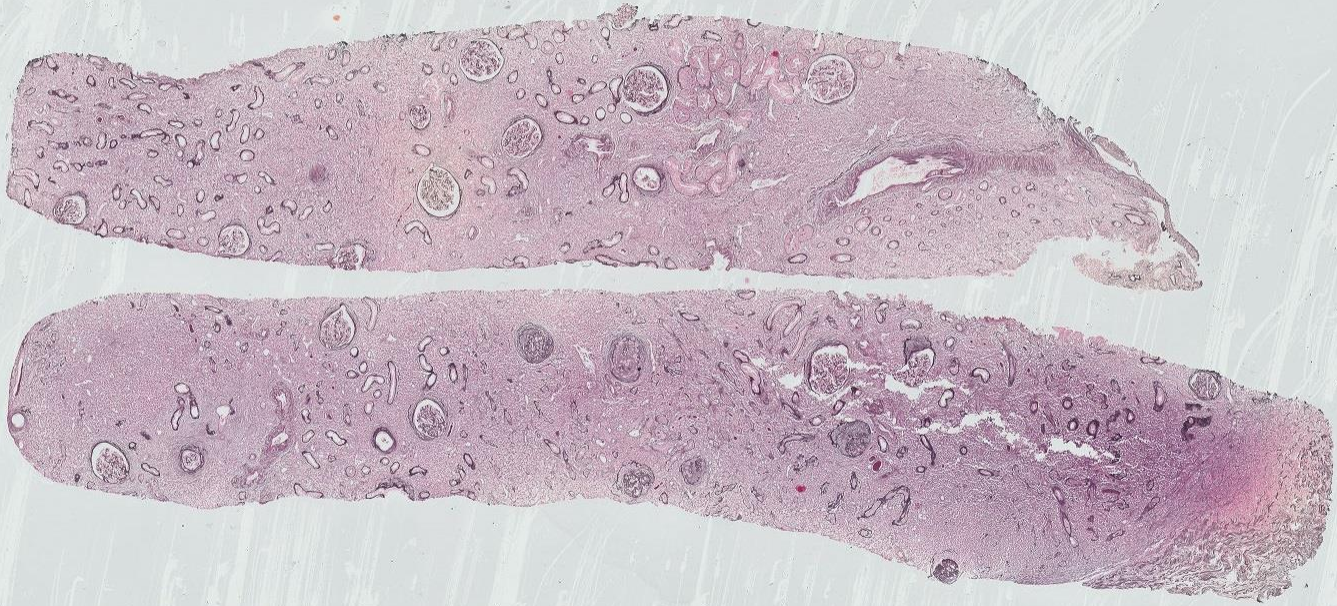
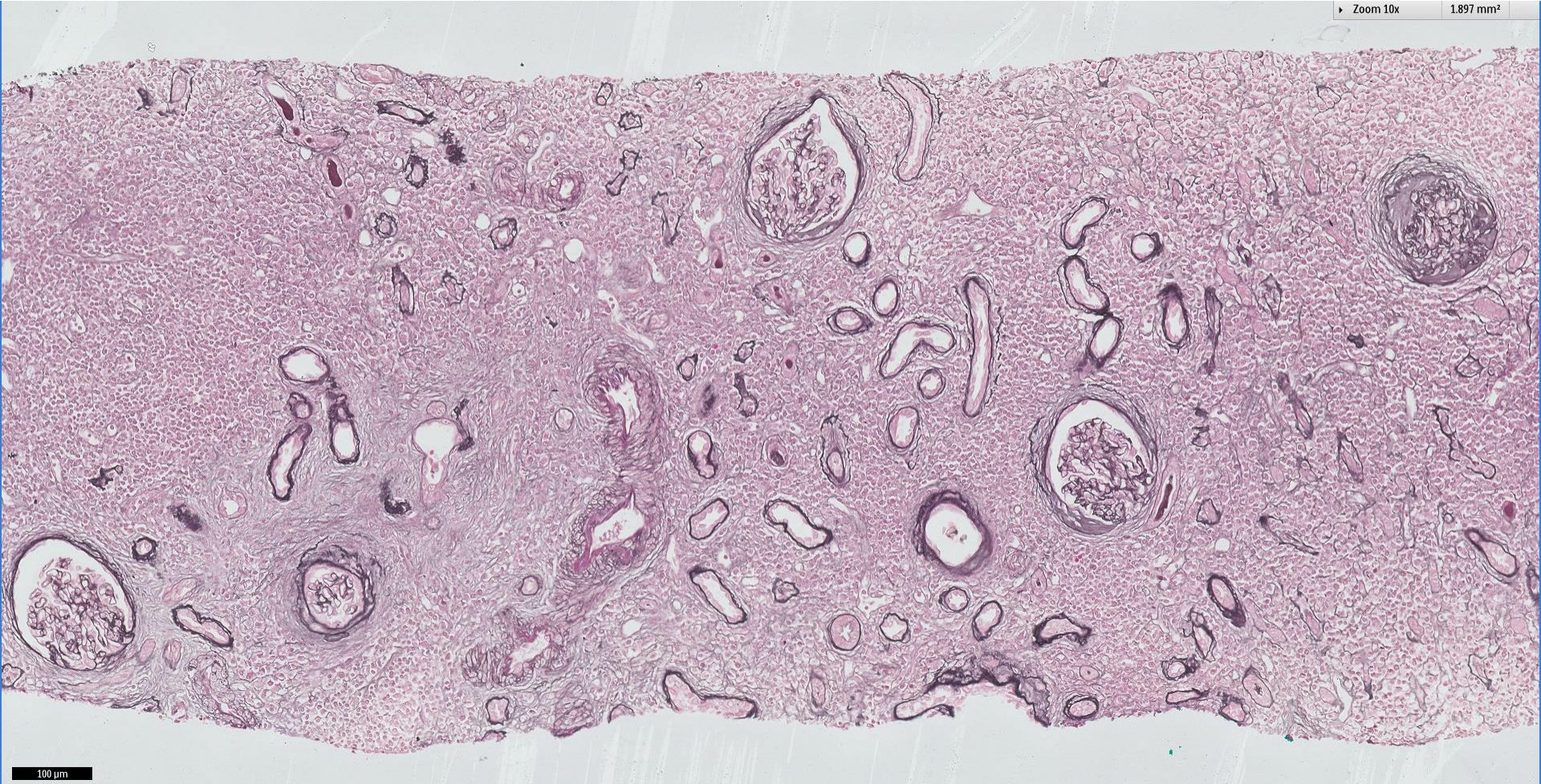


Case 69

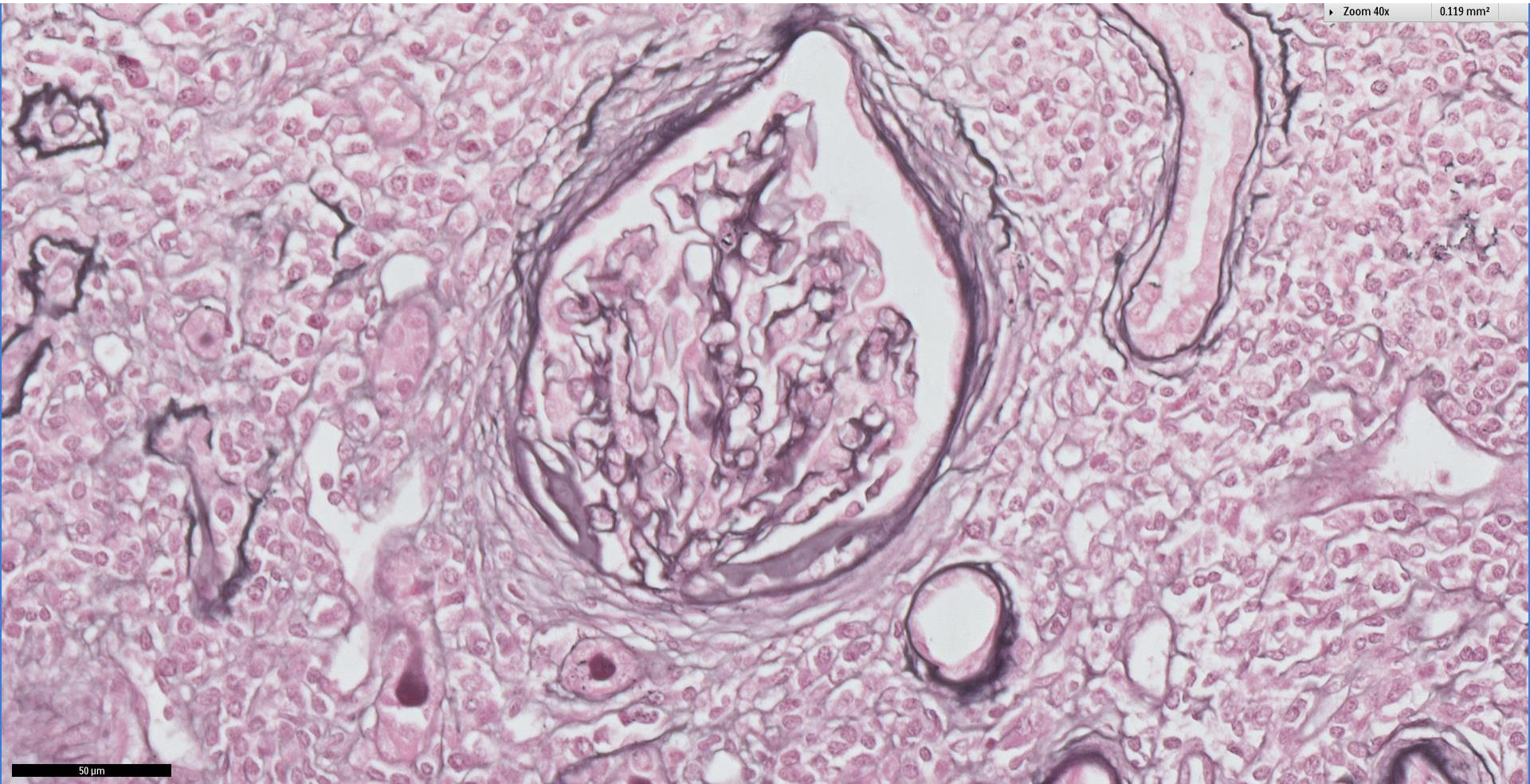
60 year old Malay man, presented with abnormal creatinine, mild haematuria and subnephrotic range proteinuria. Found to have non-specific lung nodules on CXR as well.



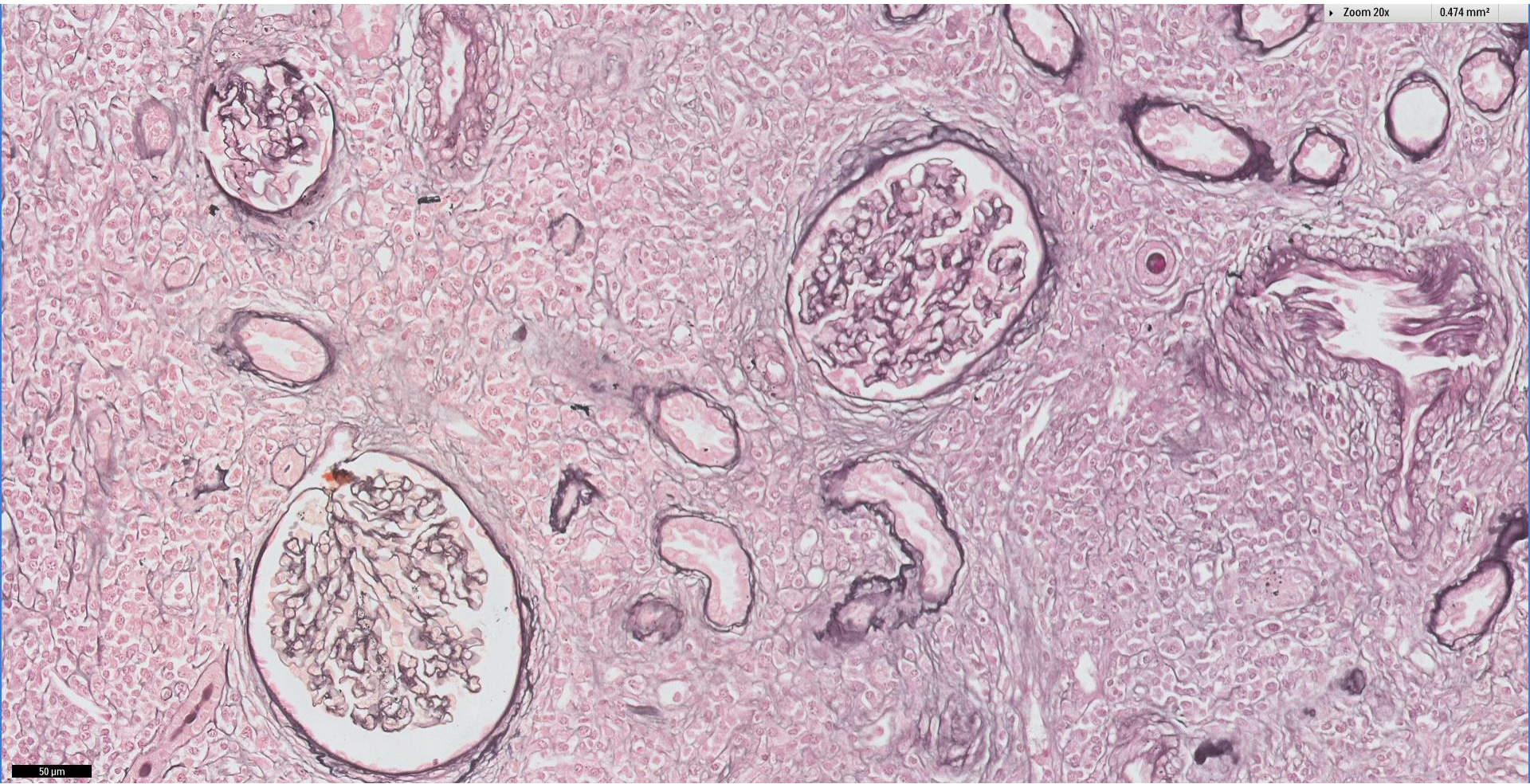


Zoom 40x

0.119 mm²

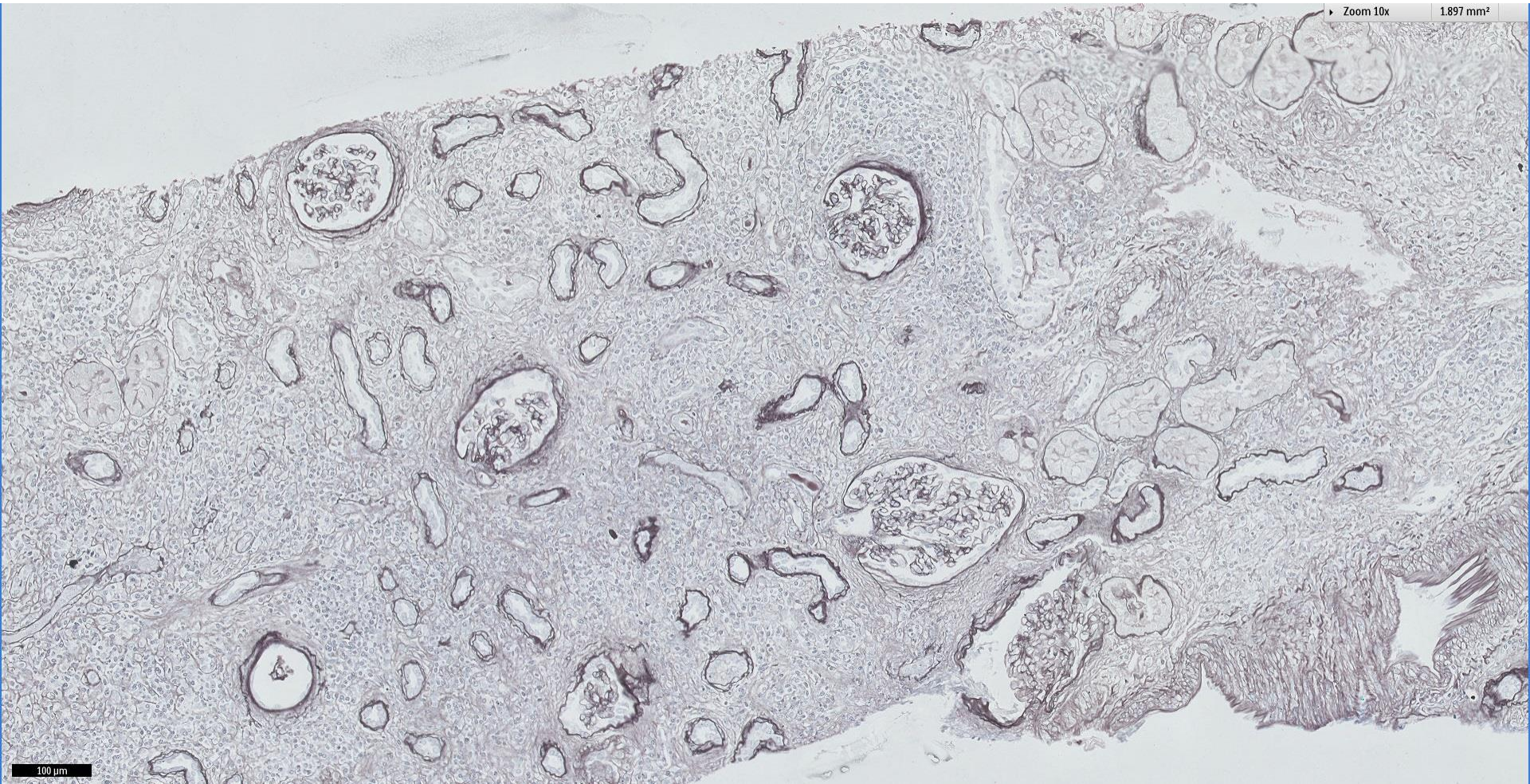


50 μm

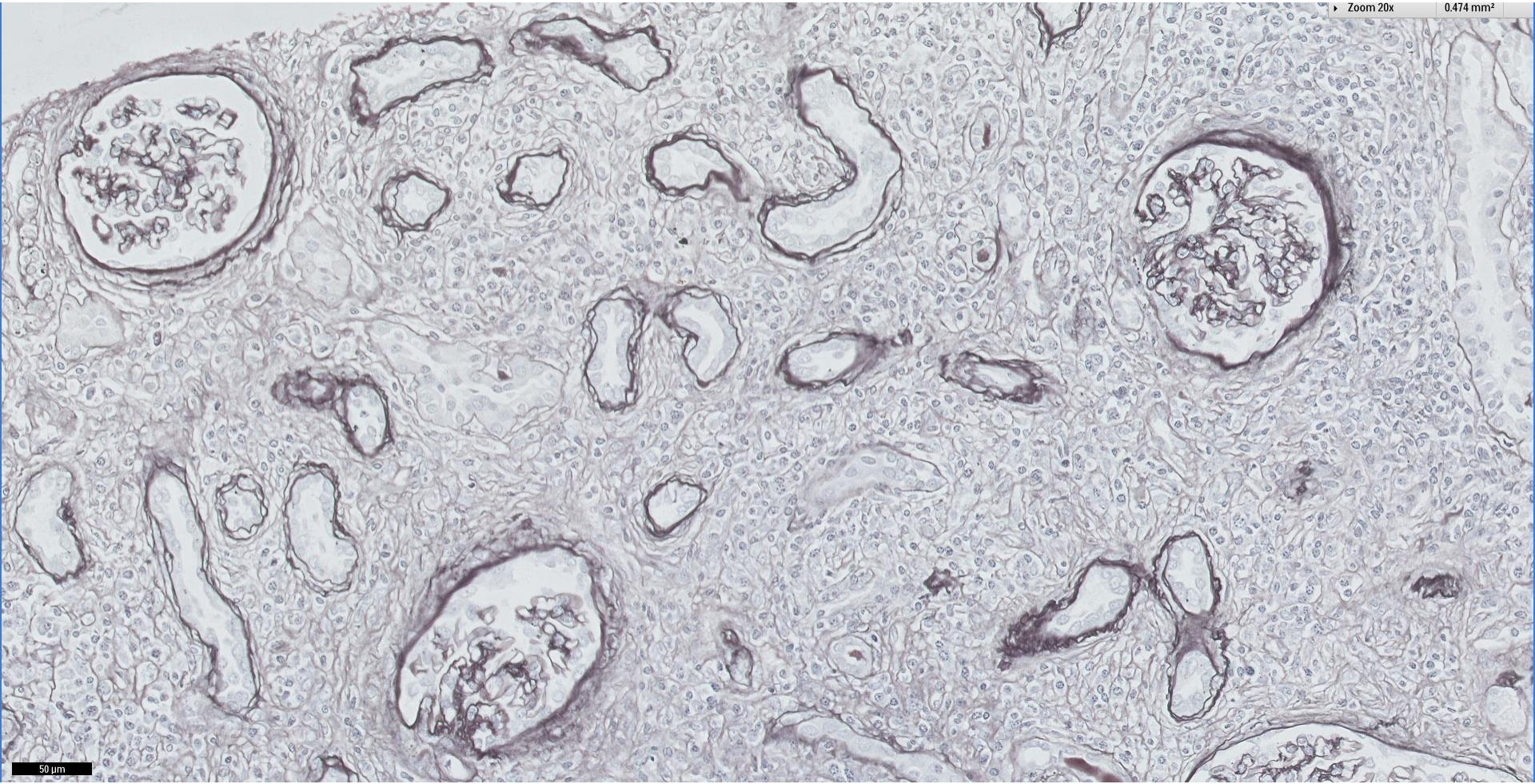


Zoom 10x

1.897 mm²



100 μ m



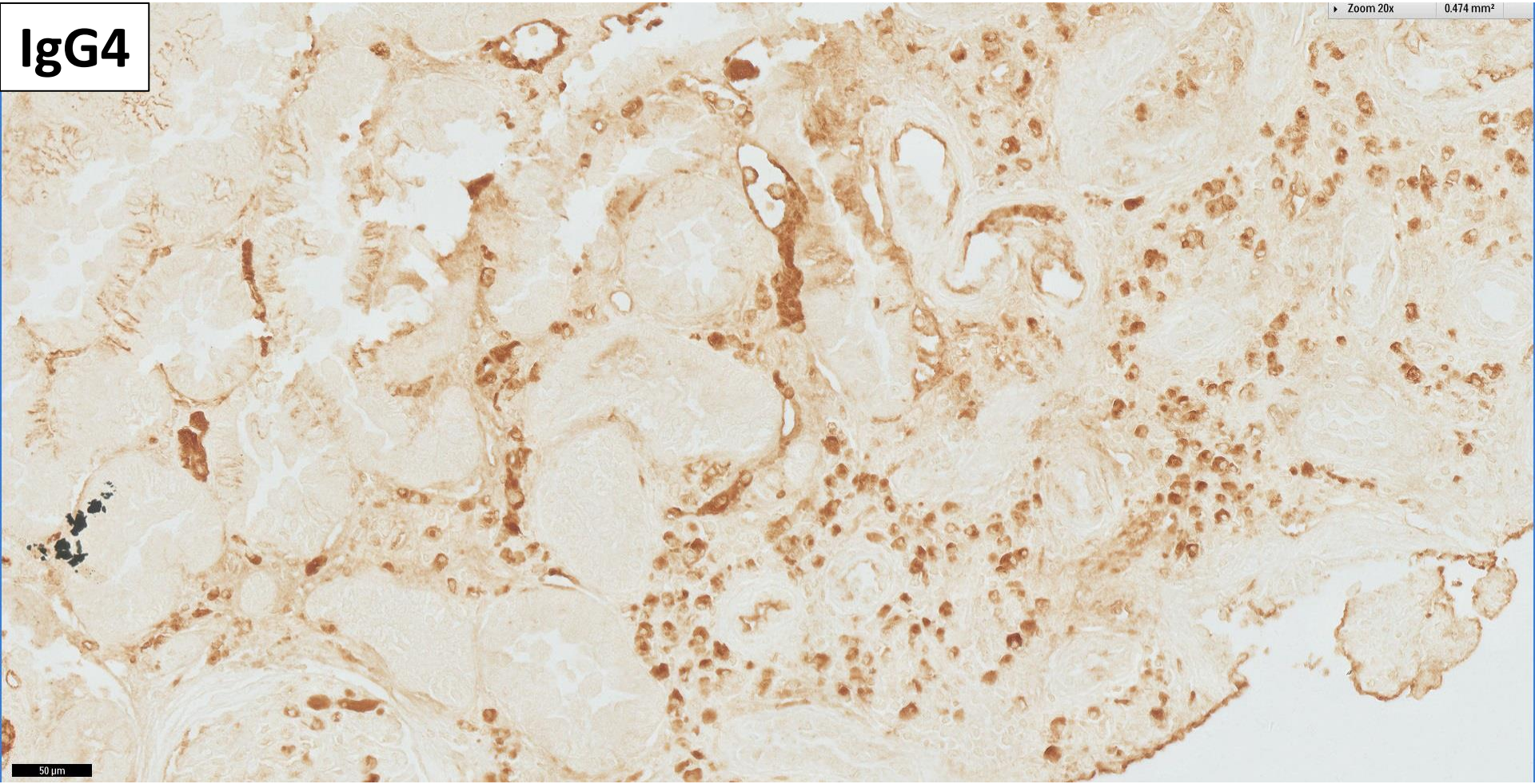
50 μm

IgG4



IgG4

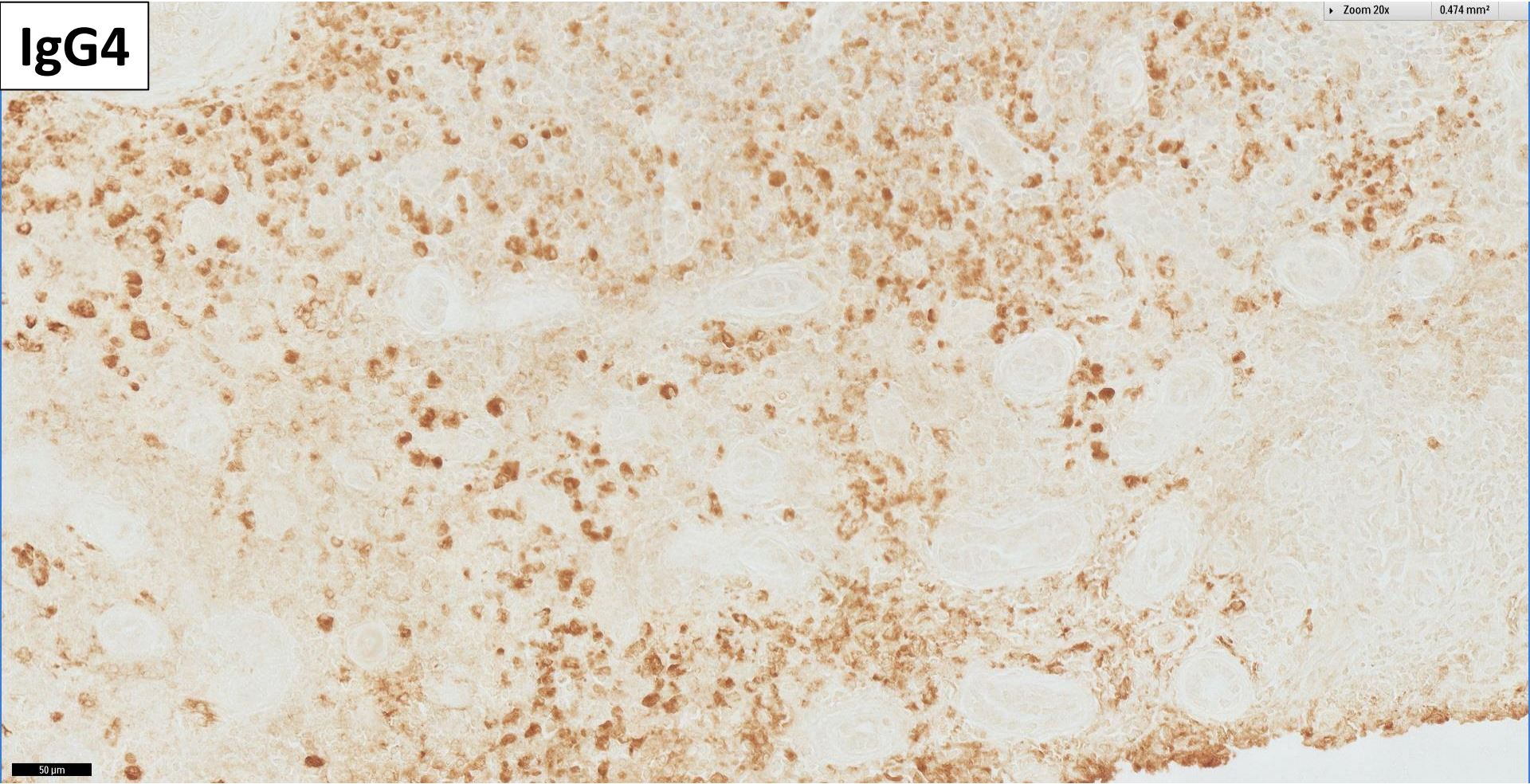
Zoom 20x 0.474 mm²



50 μ m

IgG4

Zoom 20x 0.474 mm²





RENAL BIOPSY
CLINICOPATHOLOGICAL
WORKSHOP 2018

No electron micrographs available.



RENAL BIOPSY CLINICOPATHOLOGICAL WORKSHOP 2018



PATHOLOGY



Division of Pathology
Singapore General Hospital



Department of Renal Medicine
Singapore General Hospital



MEDICINE