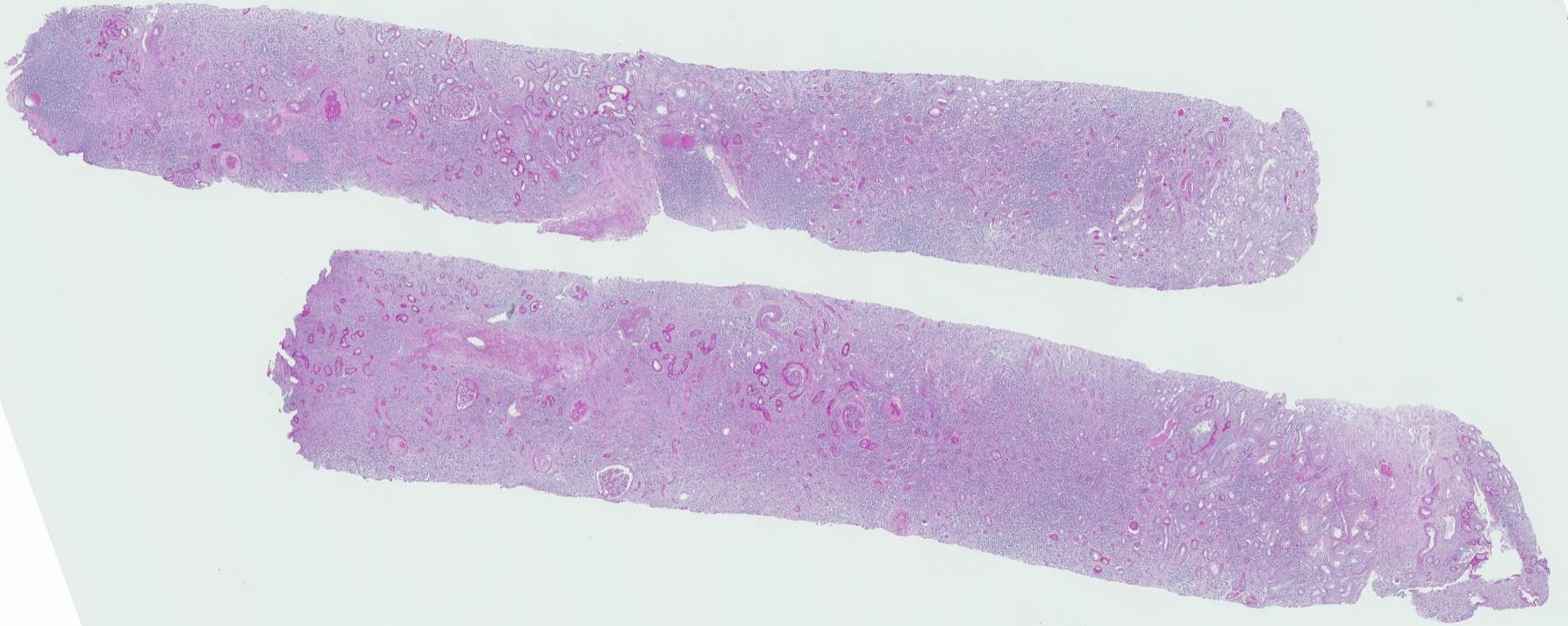
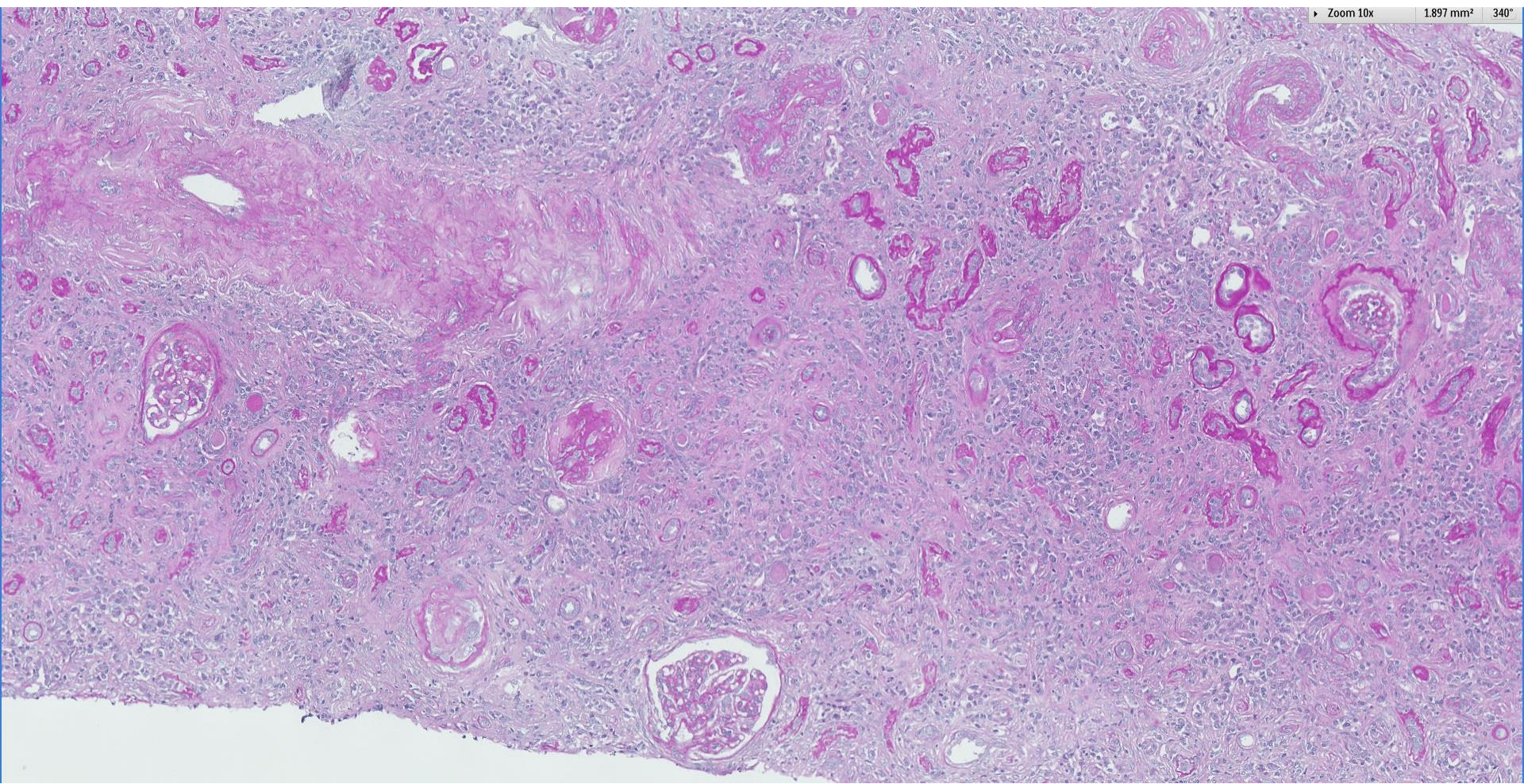
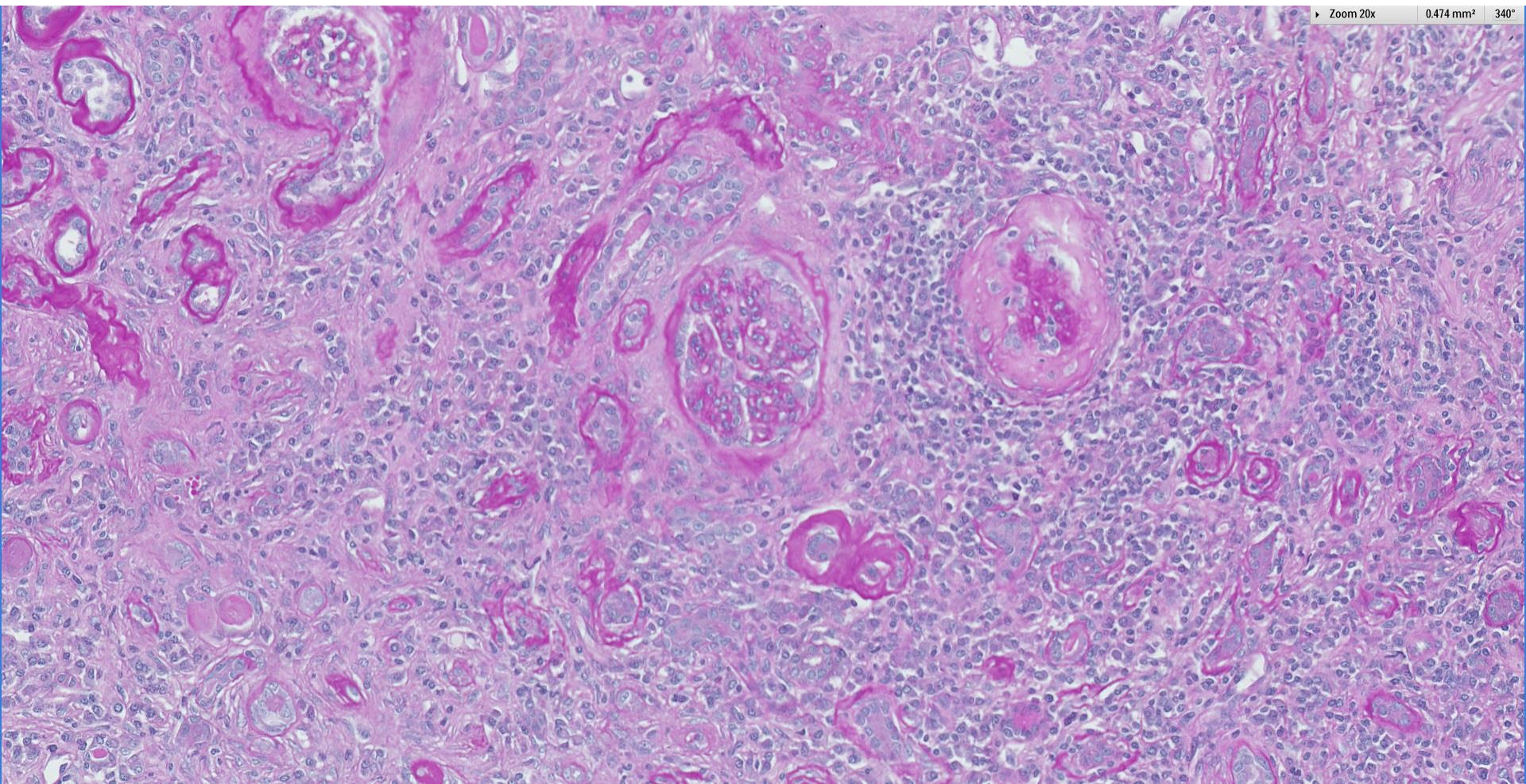


Case 68

74 year old Chinese lady with history of autoimmune pancreatitis, presented with mild AKI, subnephrotic range proteinuria and low degrees of haematuria and pyuria.

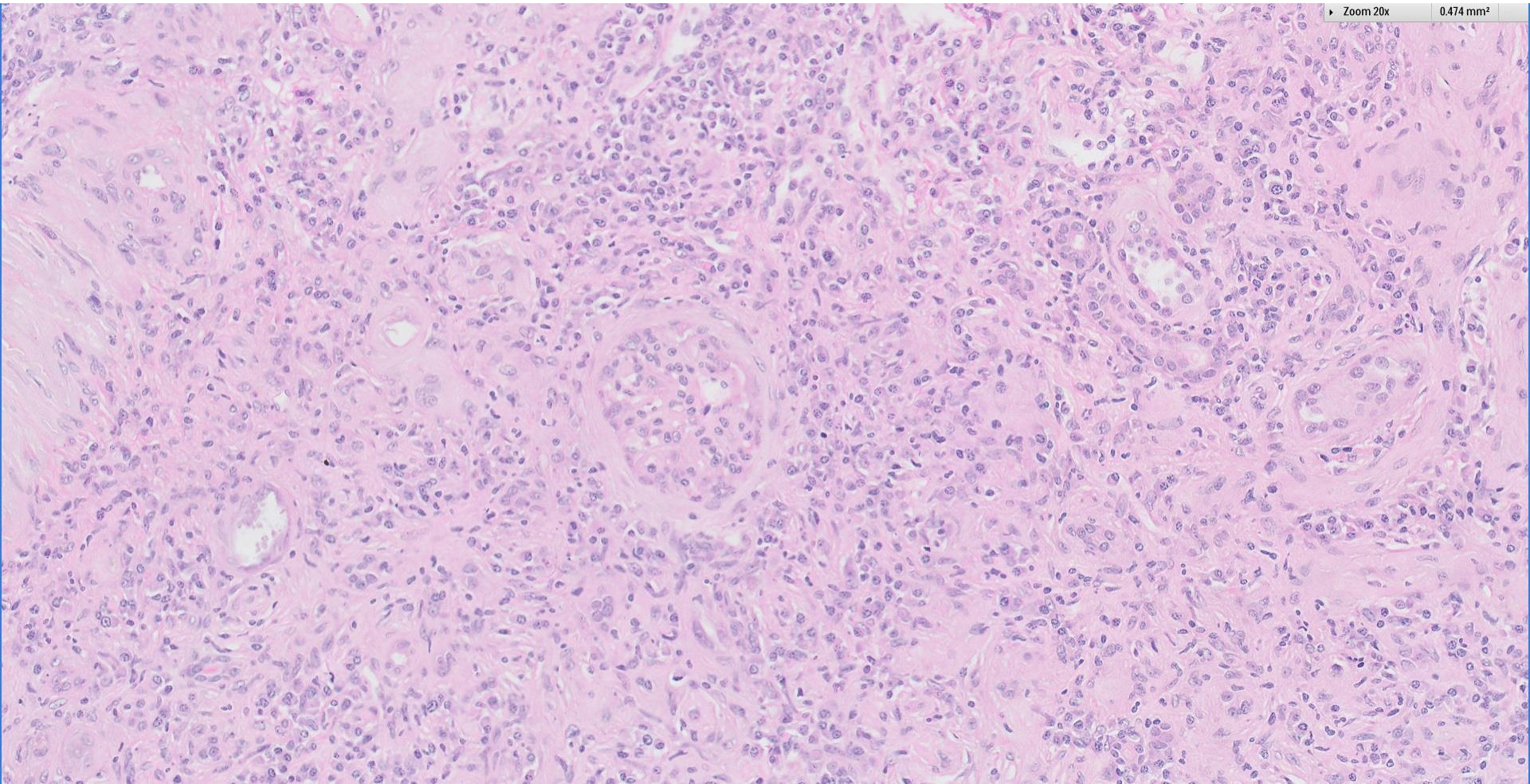






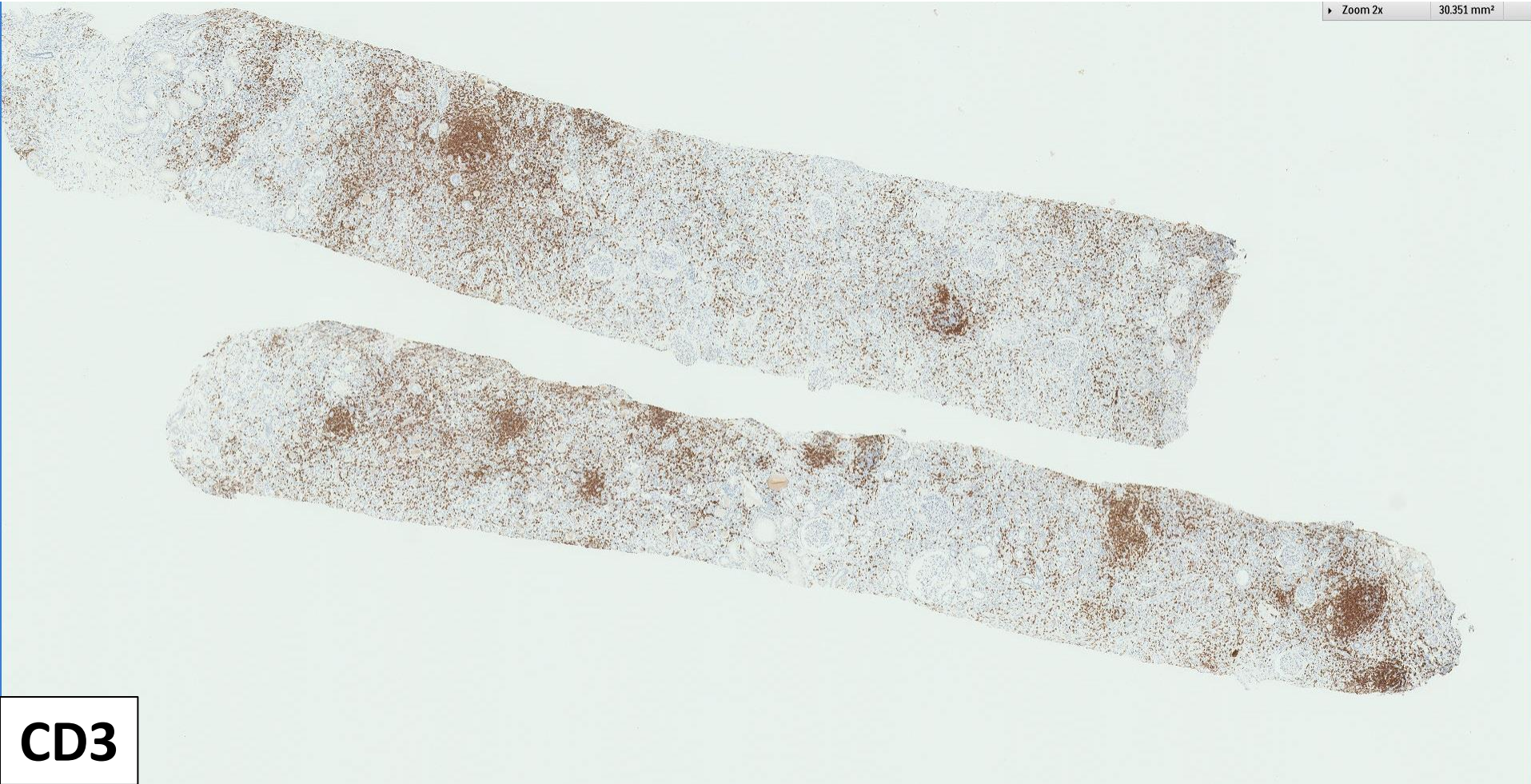
Zoom 20x

0.474 mm²



Zoom 2x

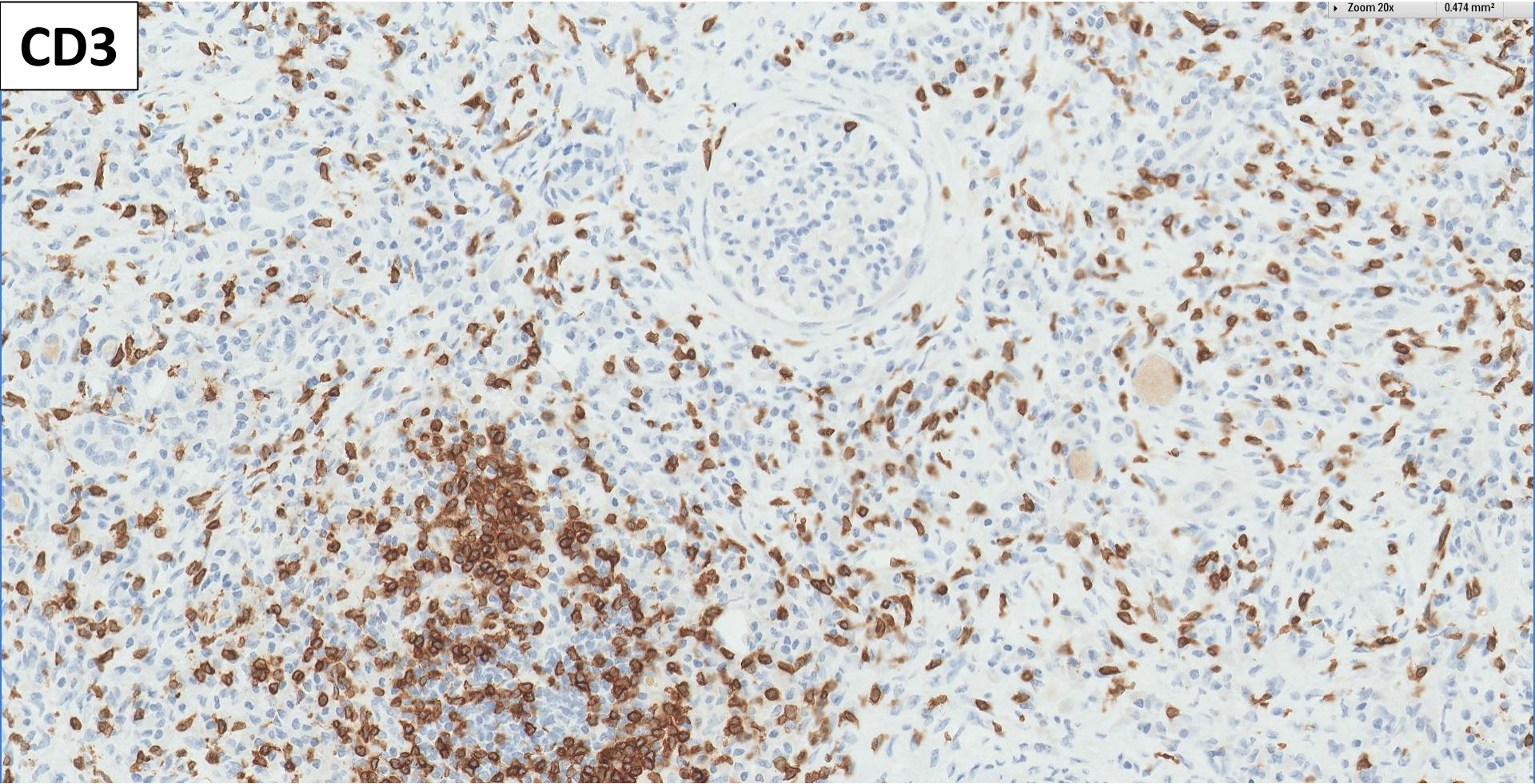
30.351 mm²



CD3

CD3

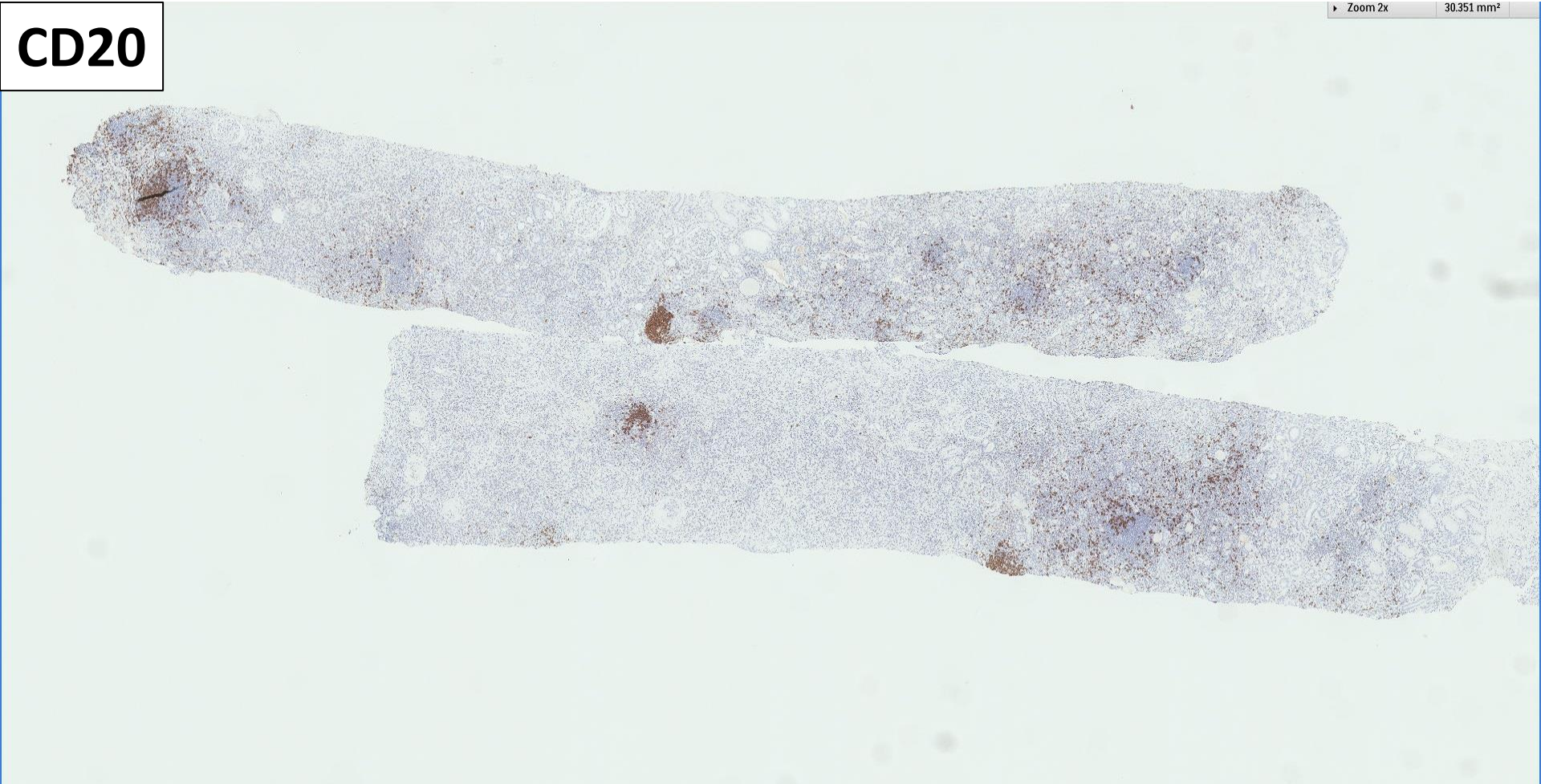
Zoom 20x 0.474 mm²



CD20

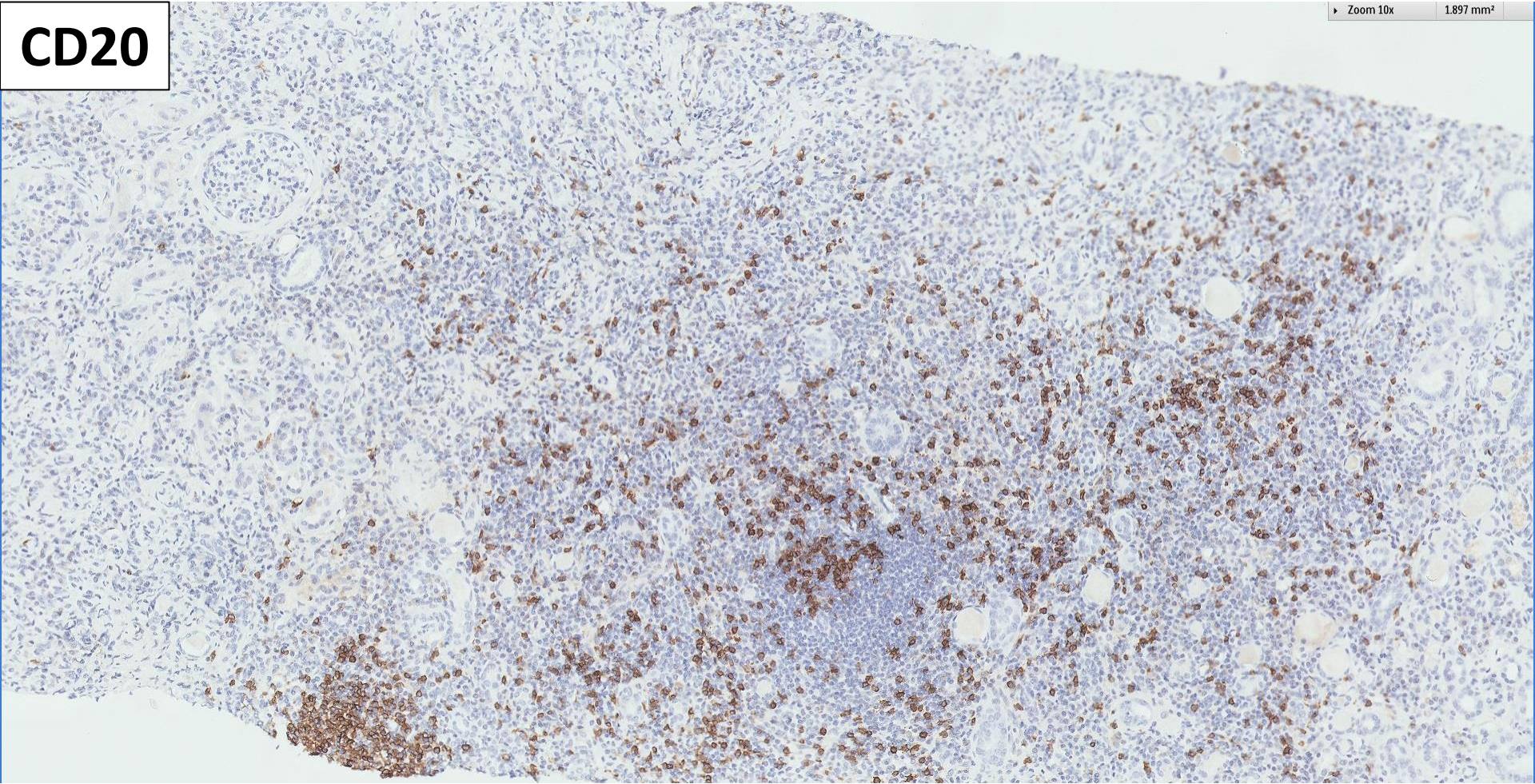
Zoom 2x

30.351 mm²



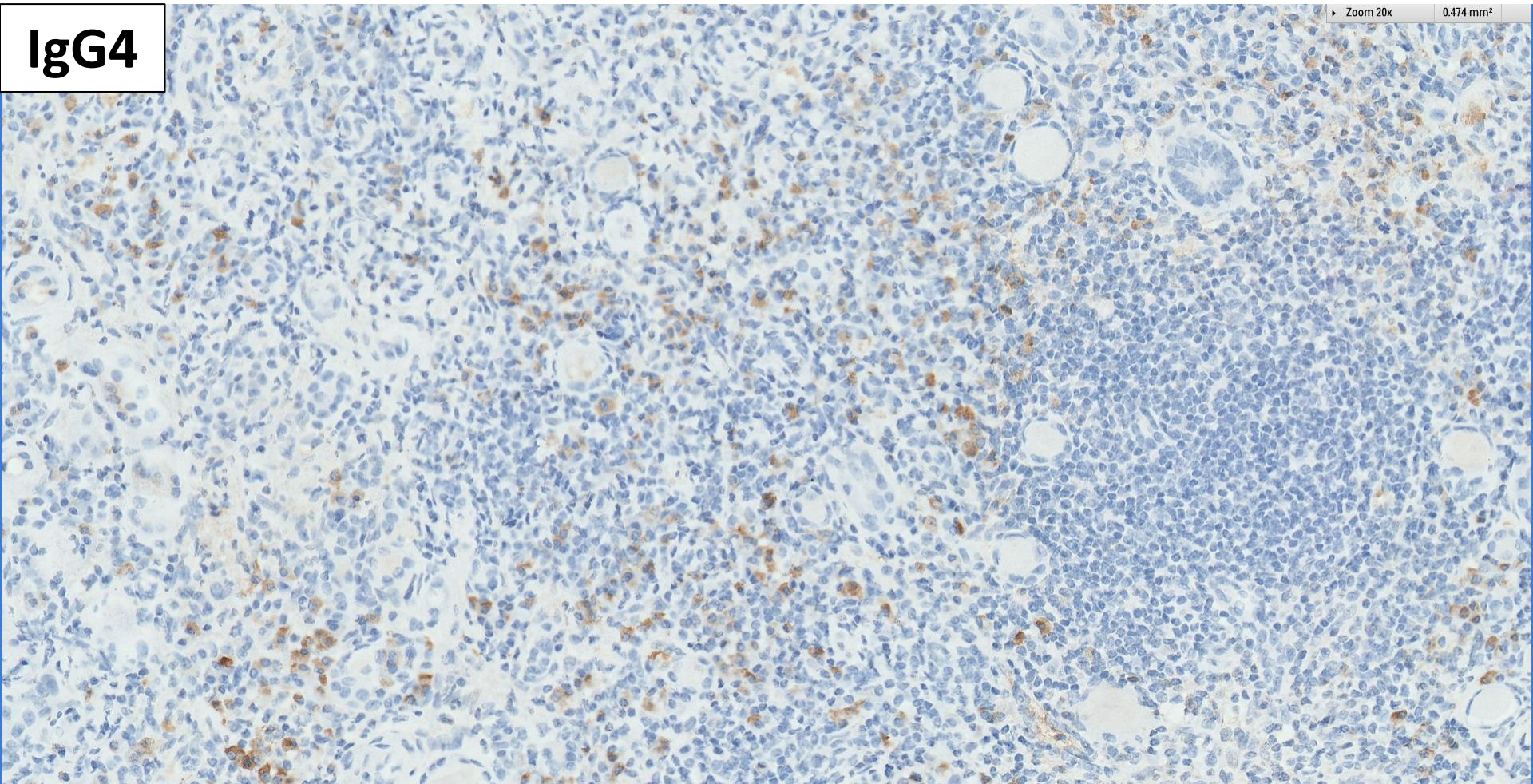
CD20

Zoom 10x 1.697 mm²

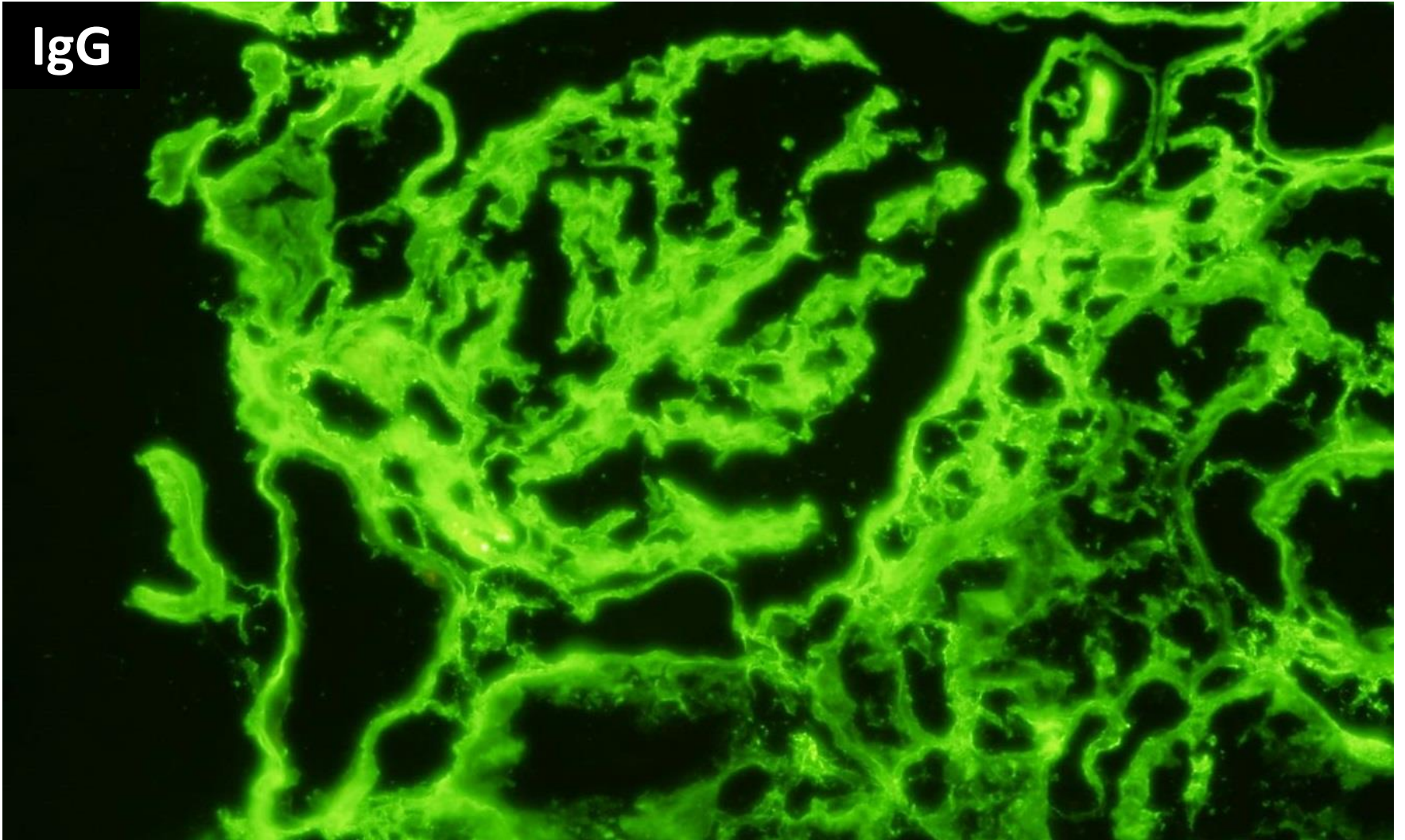


IgG4

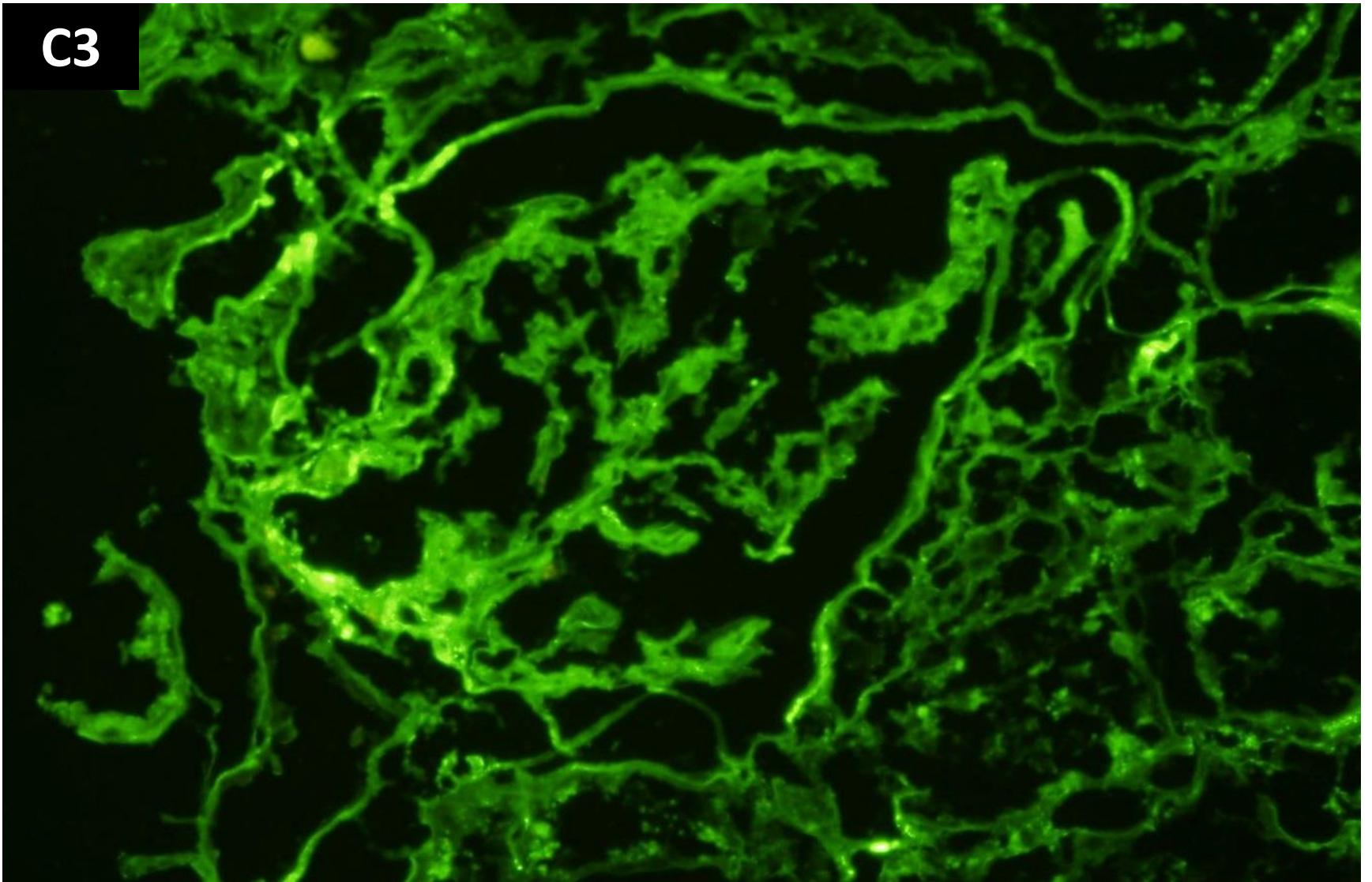
Zoom 20x 0.474 mm²

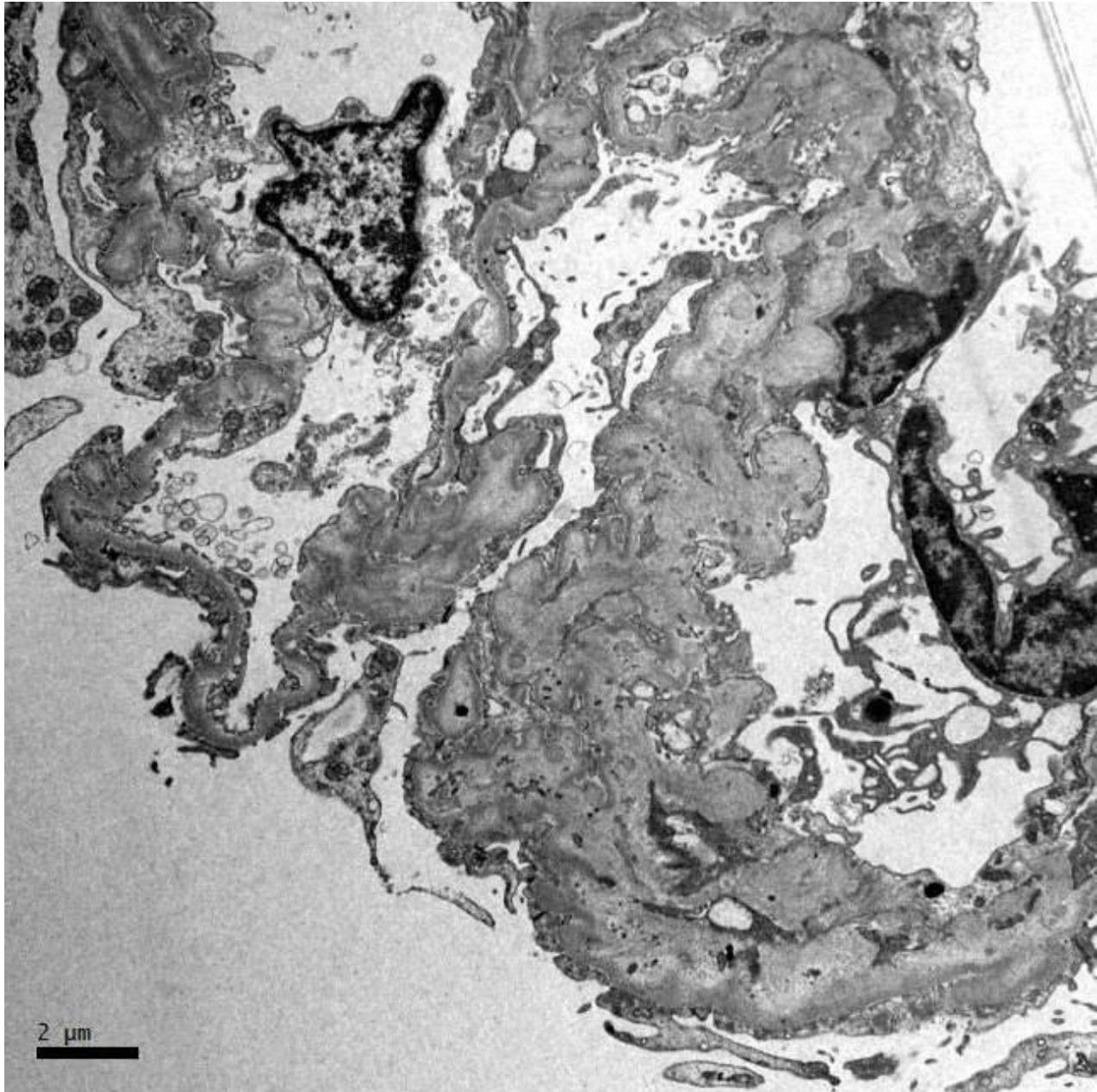


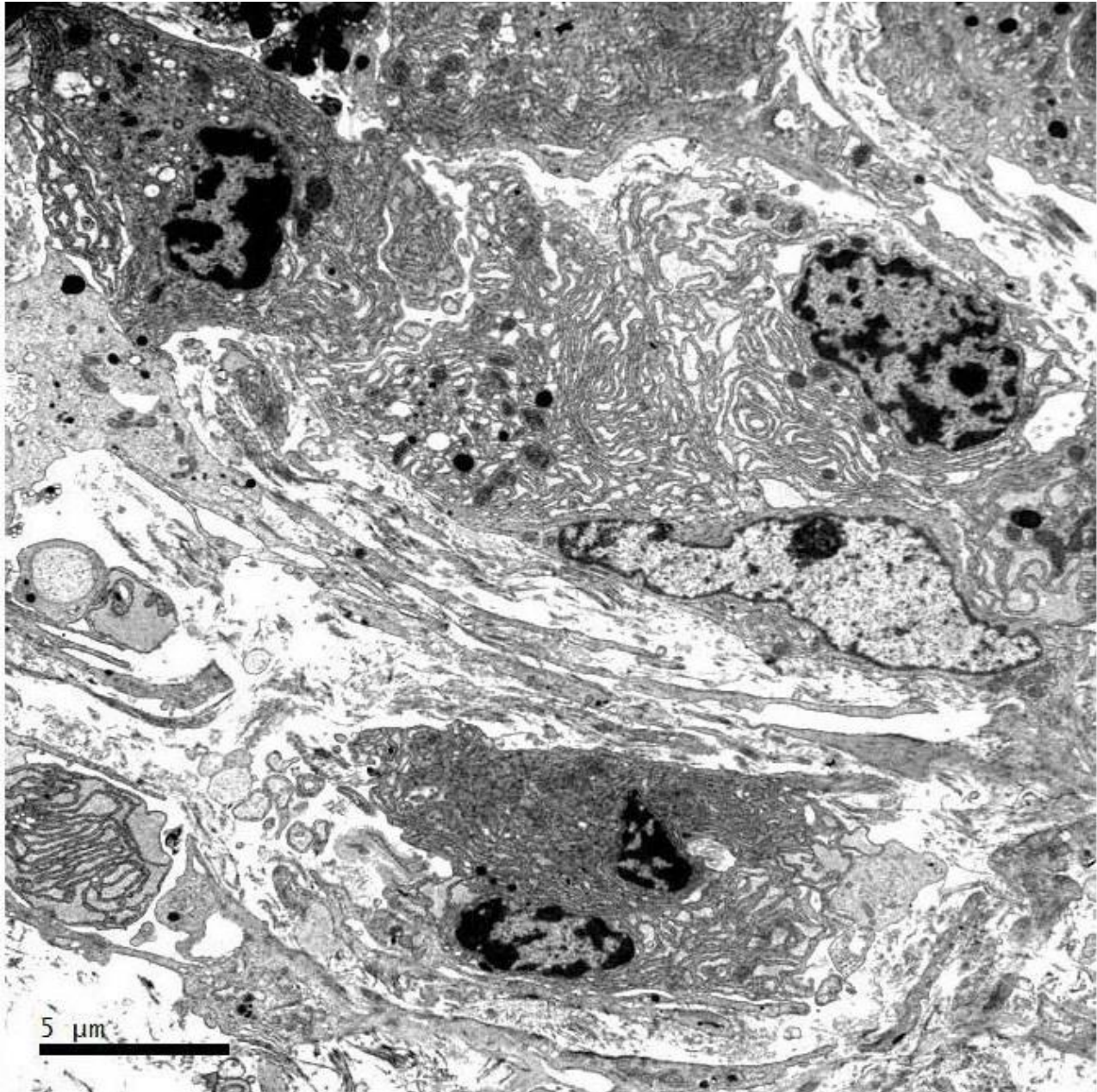
IgG



C3









RENAL BIOPSY CLINICOPATHOLOGICAL WORKSHOP 2018



PATHOLOGY



Division of Pathology
Singapore General Hospital



Department of Renal Medicine
Singapore General Hospital



MEDICINE