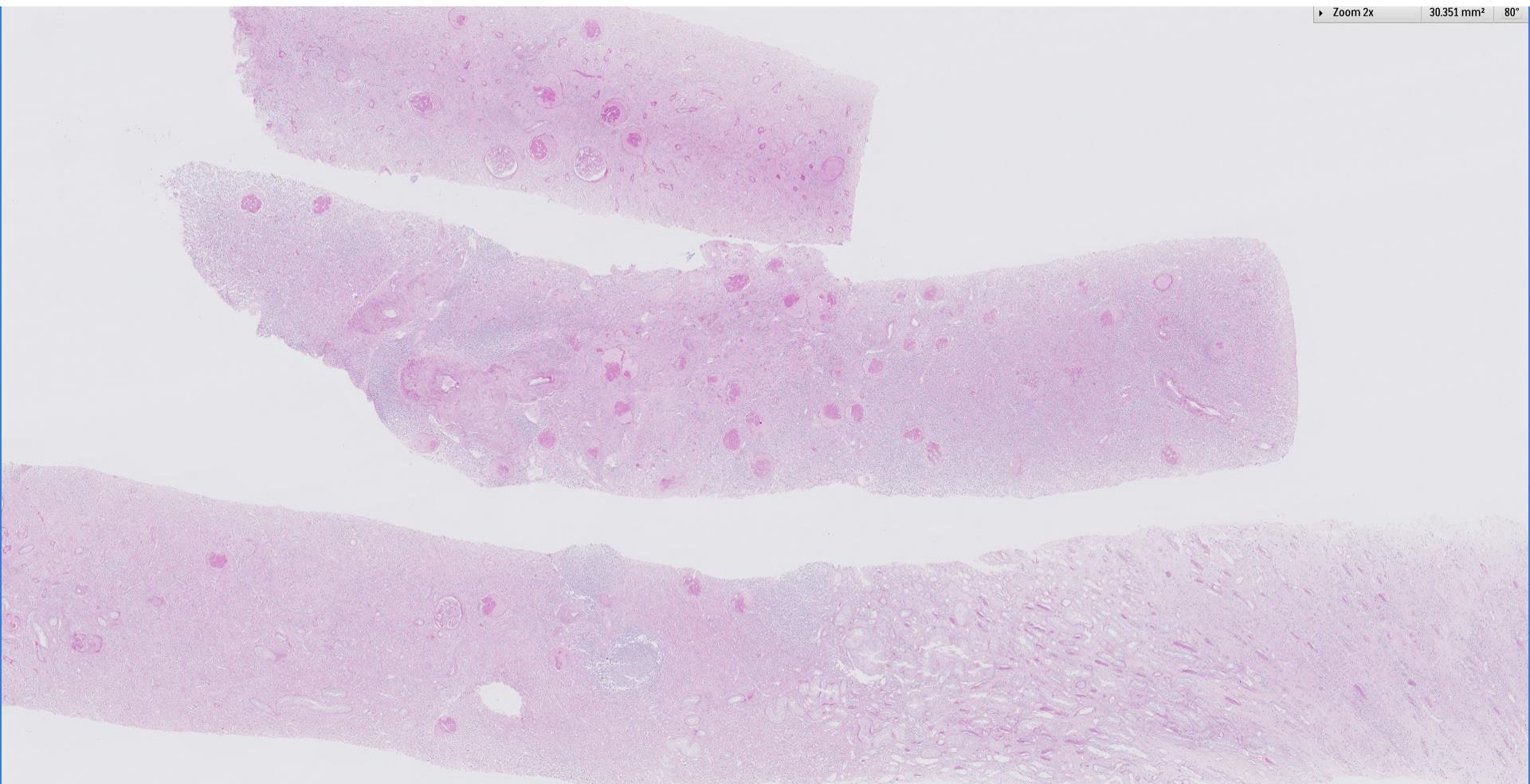
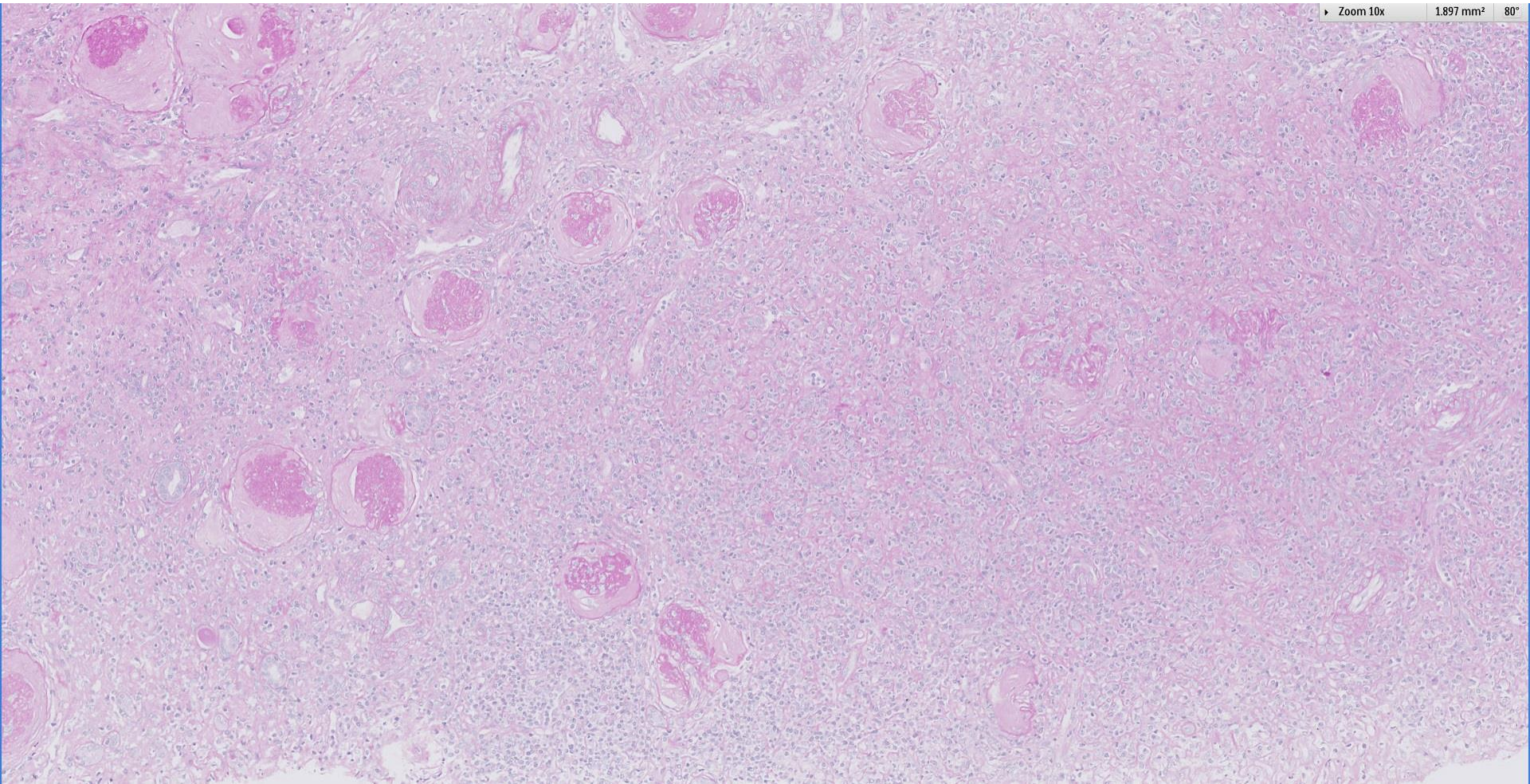
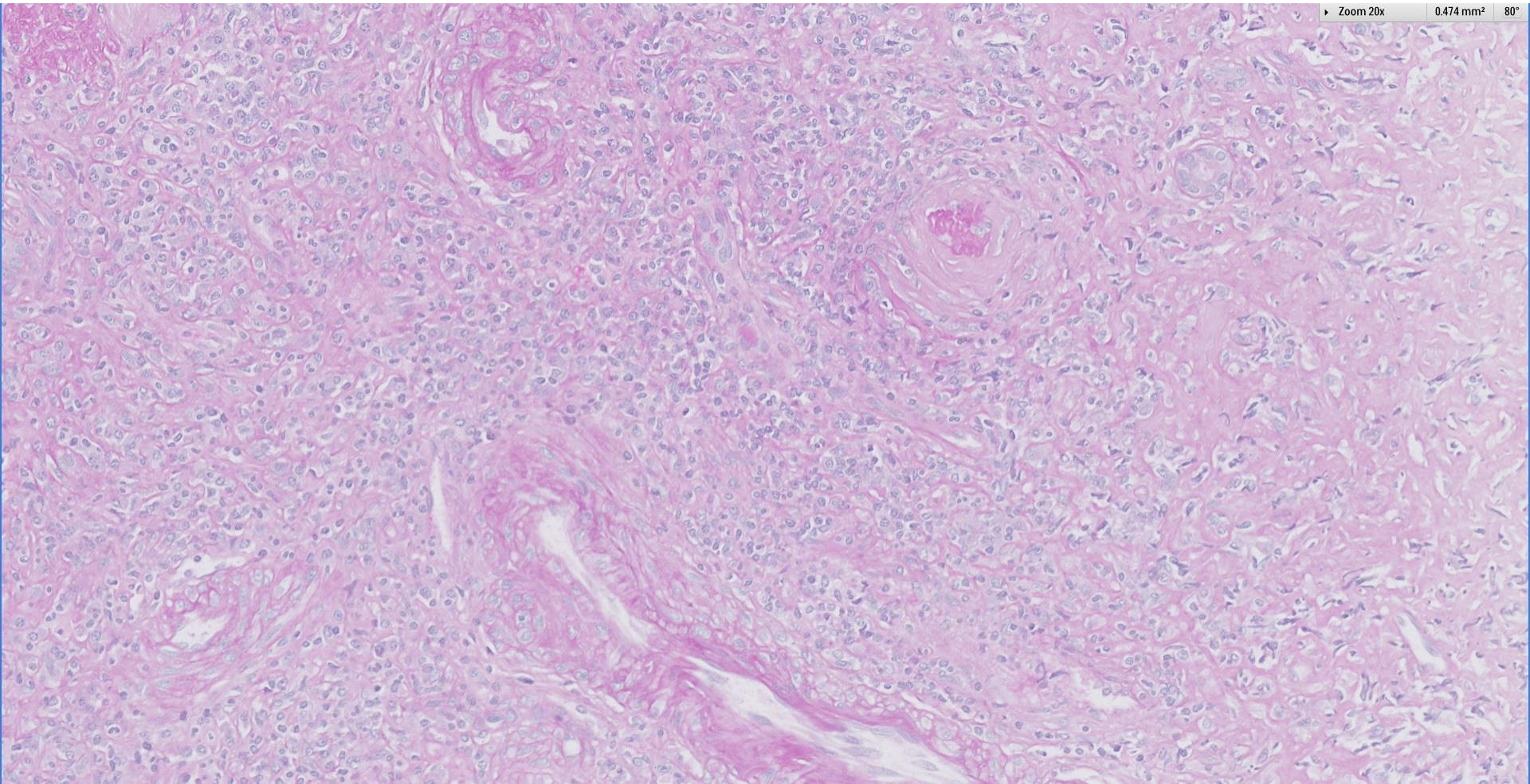


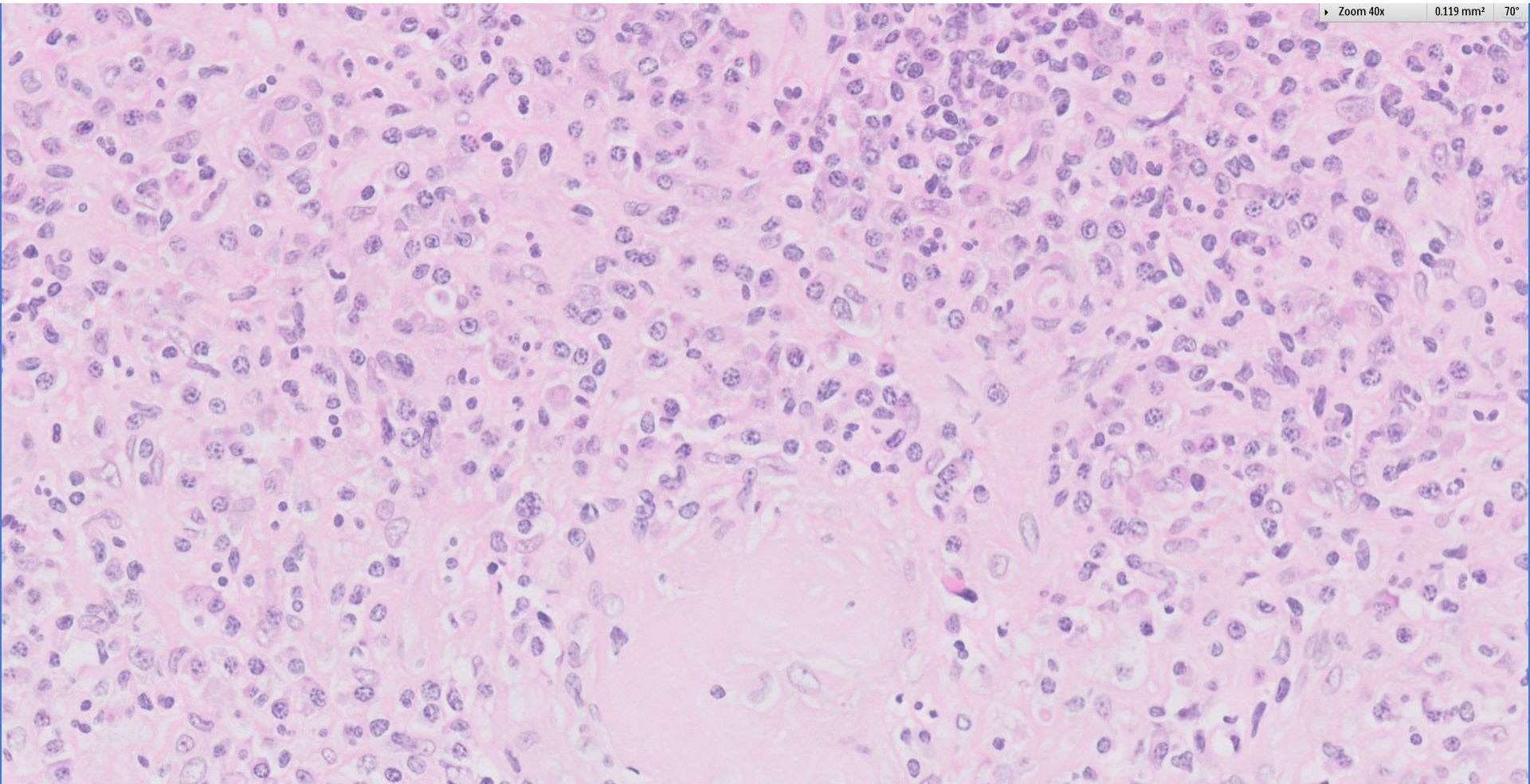
## Case 66

70 year old Malay man, presented with nephrotic syndrome and rising creatinine.

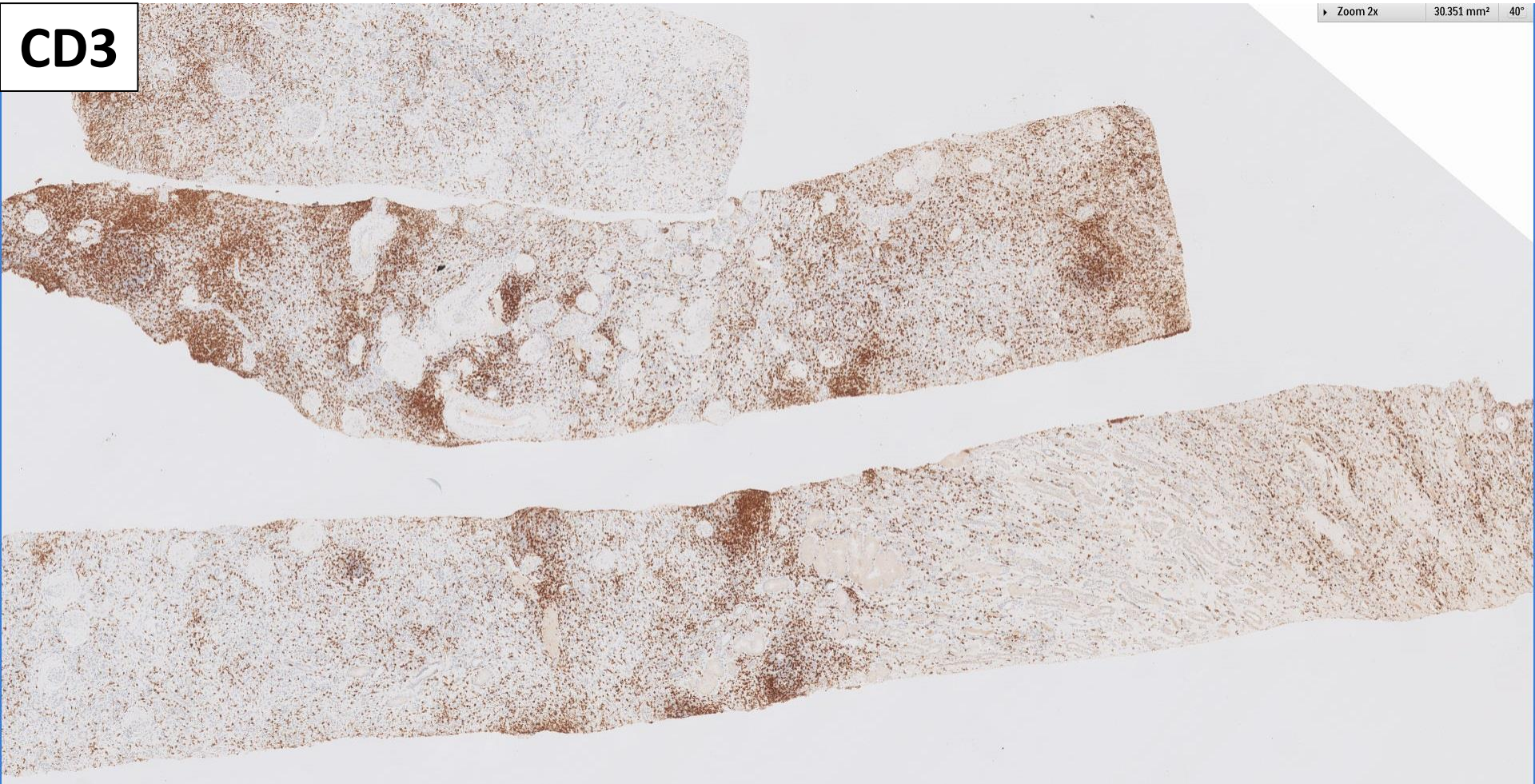






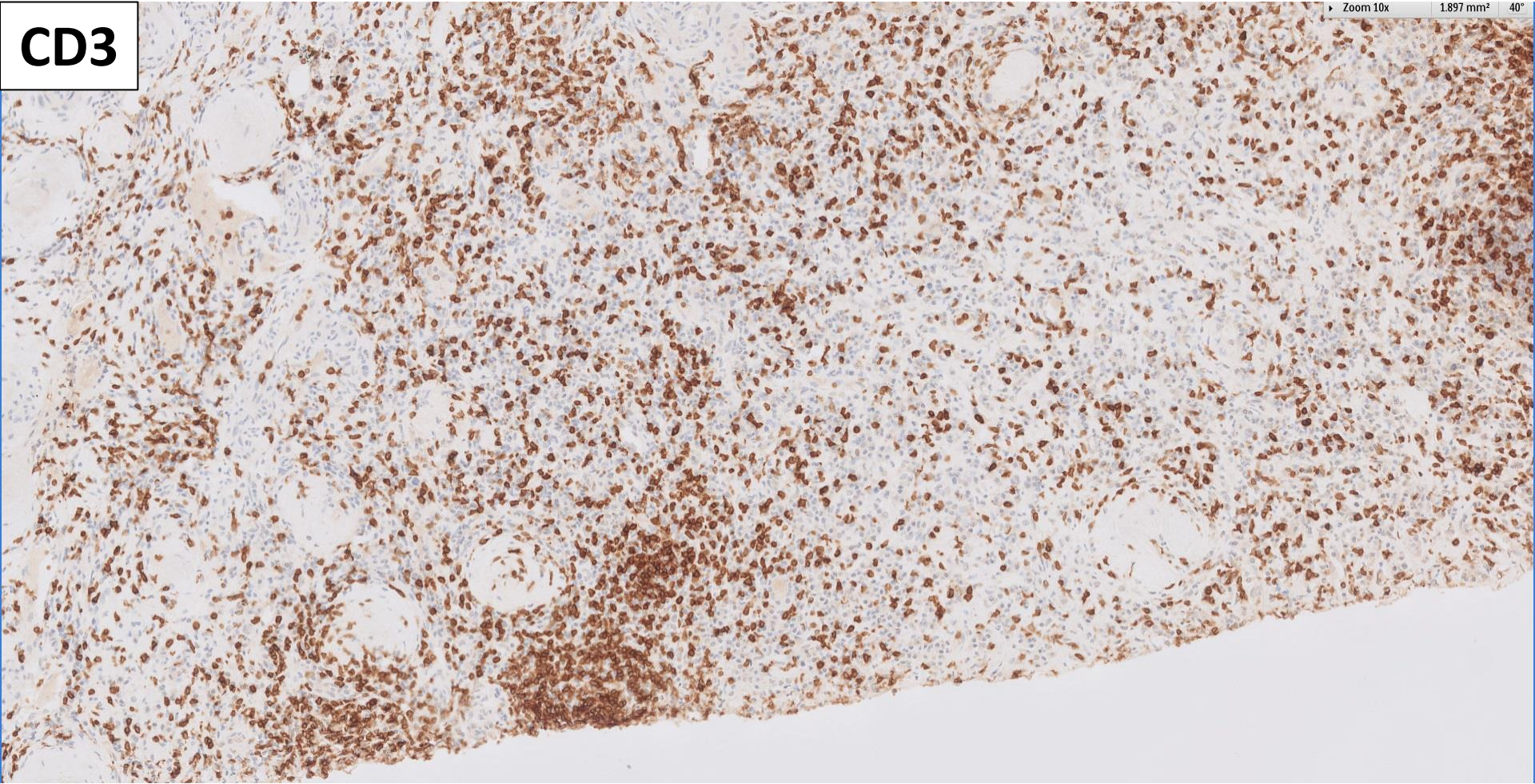


**CD3**

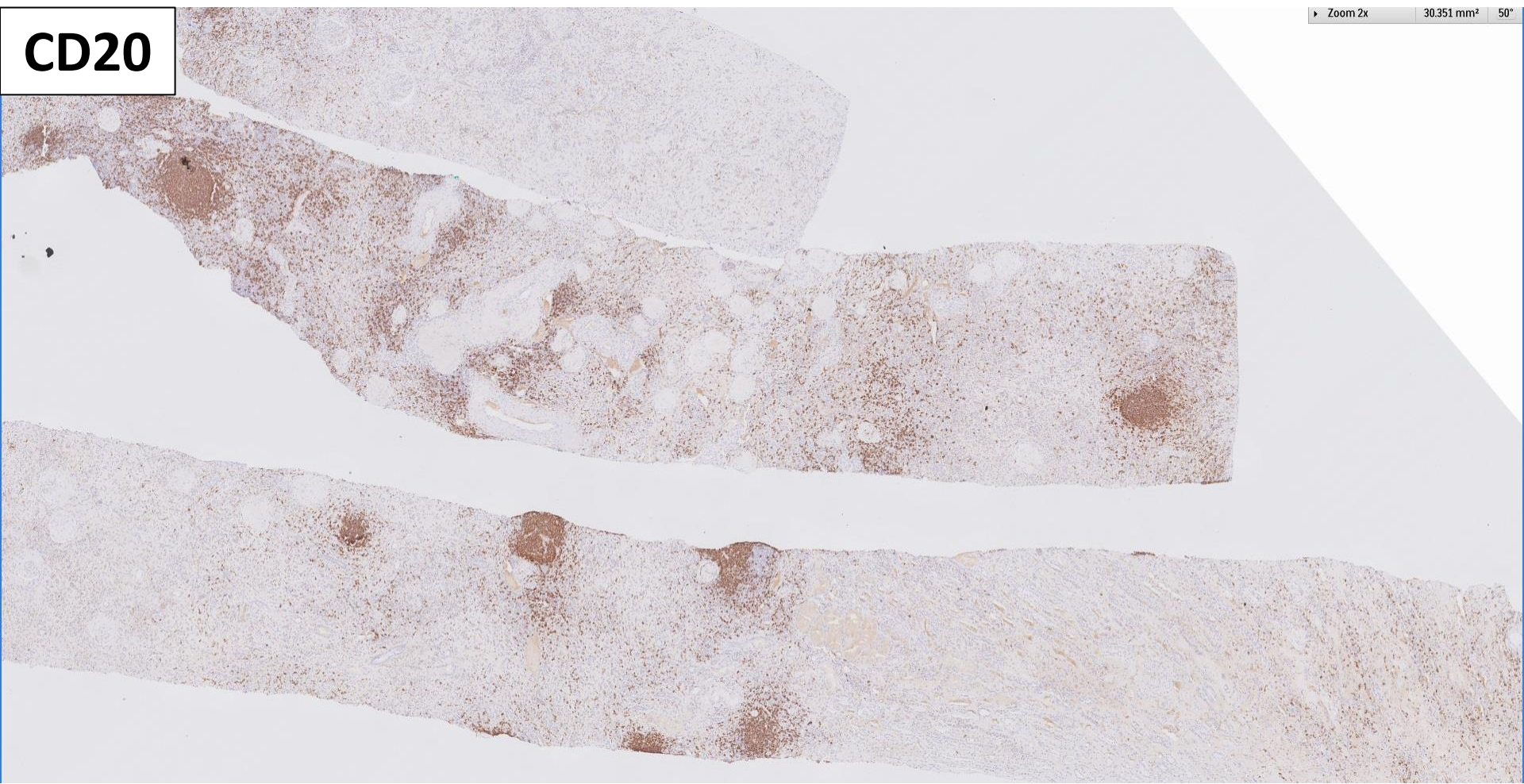


**CD3**

Zoom 10x 1.897 mm<sup>2</sup> 40°



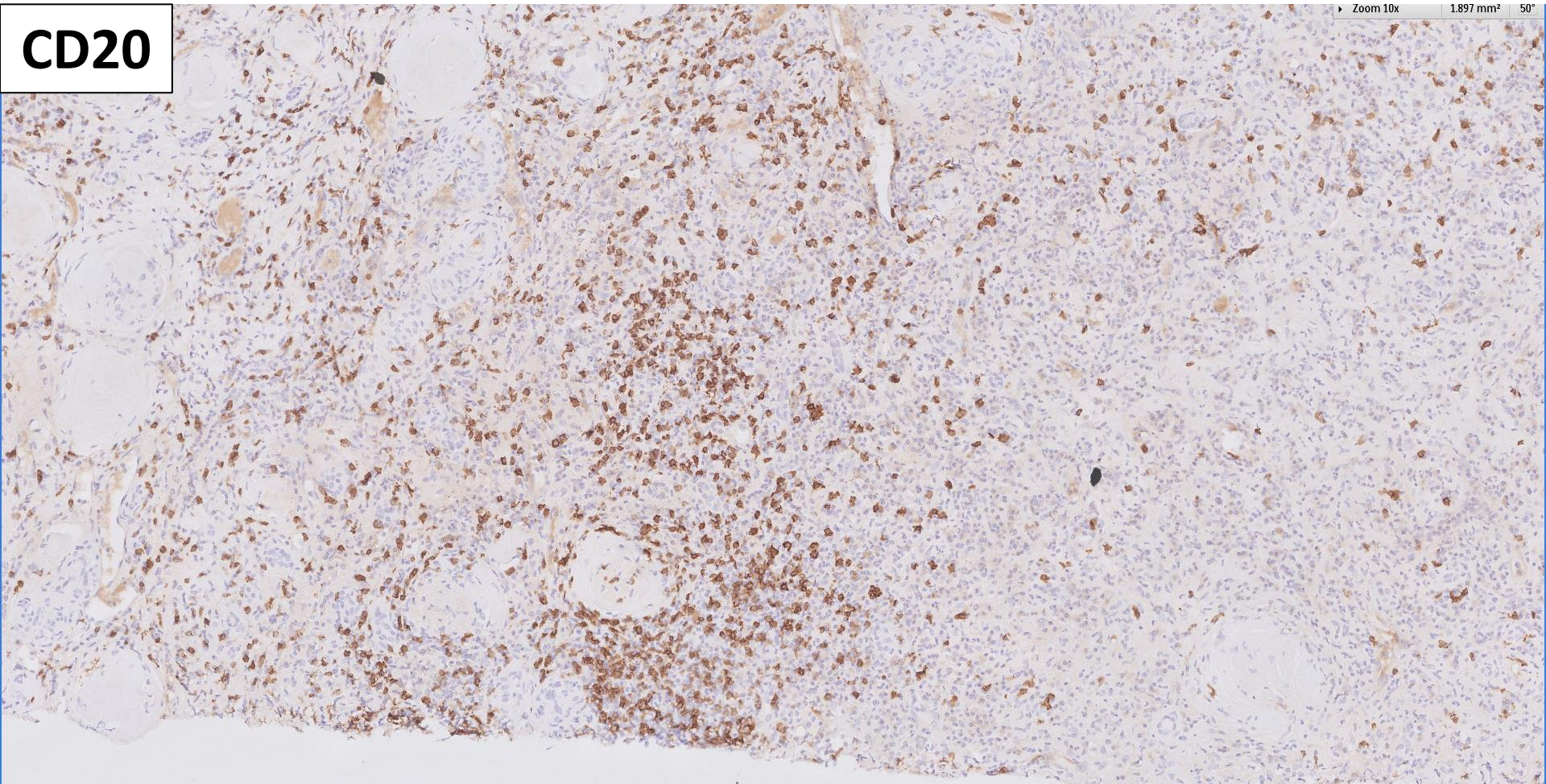
**CD20**





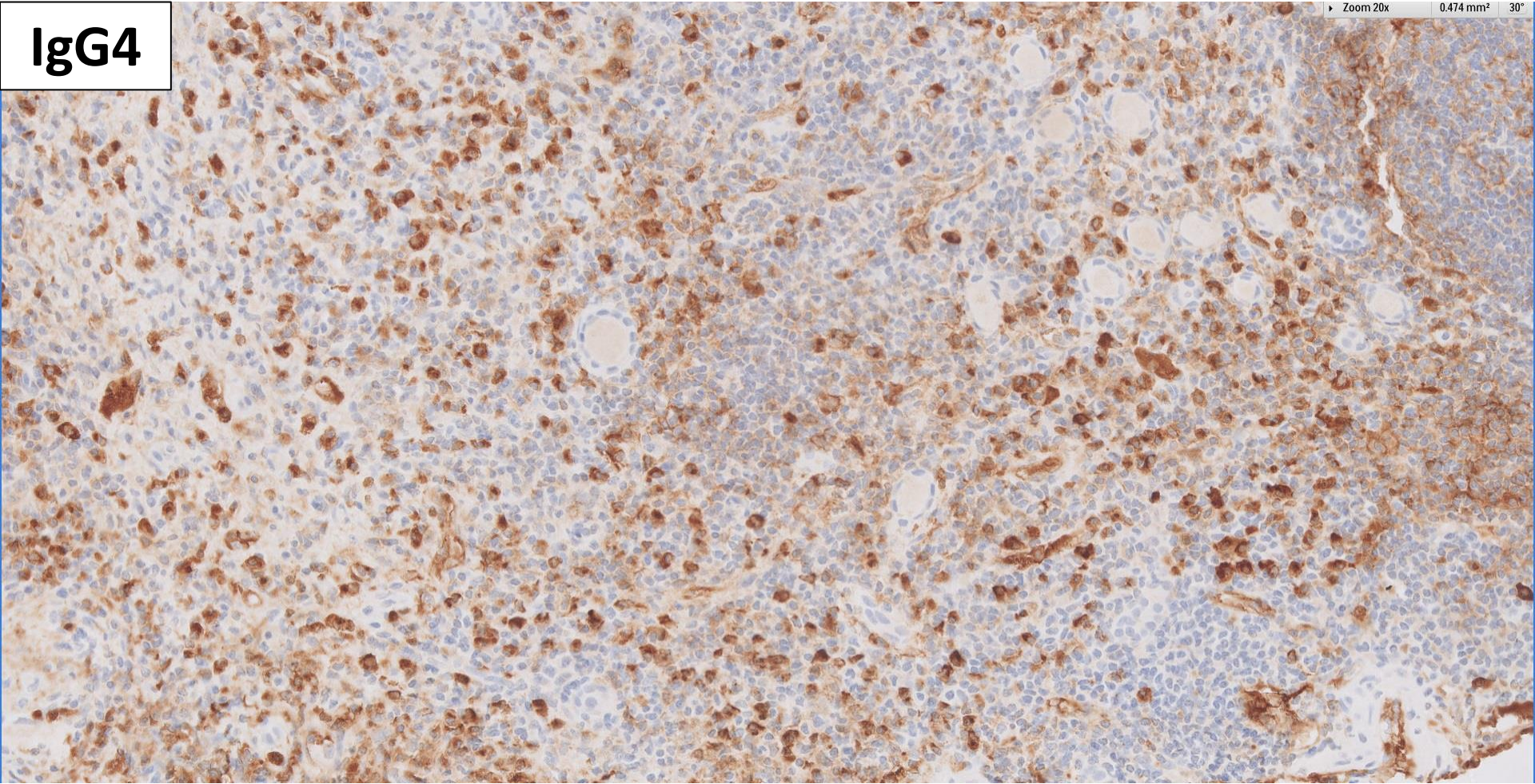
**CD20**

Zoom 10x 1.897 mm<sup>2</sup> 50°



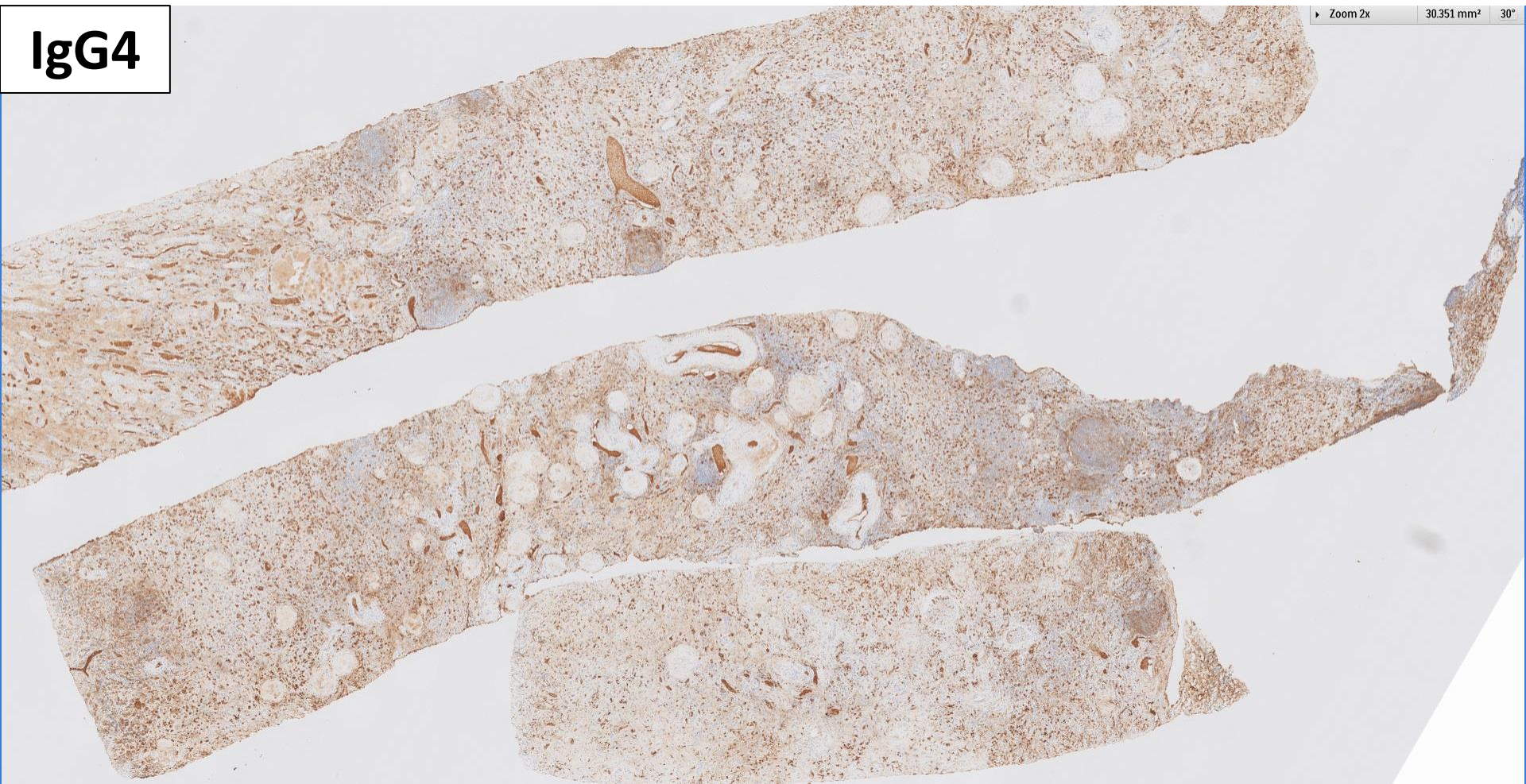
**IgG4**

Zoom 20x 0.474 mm<sup>2</sup> 30°

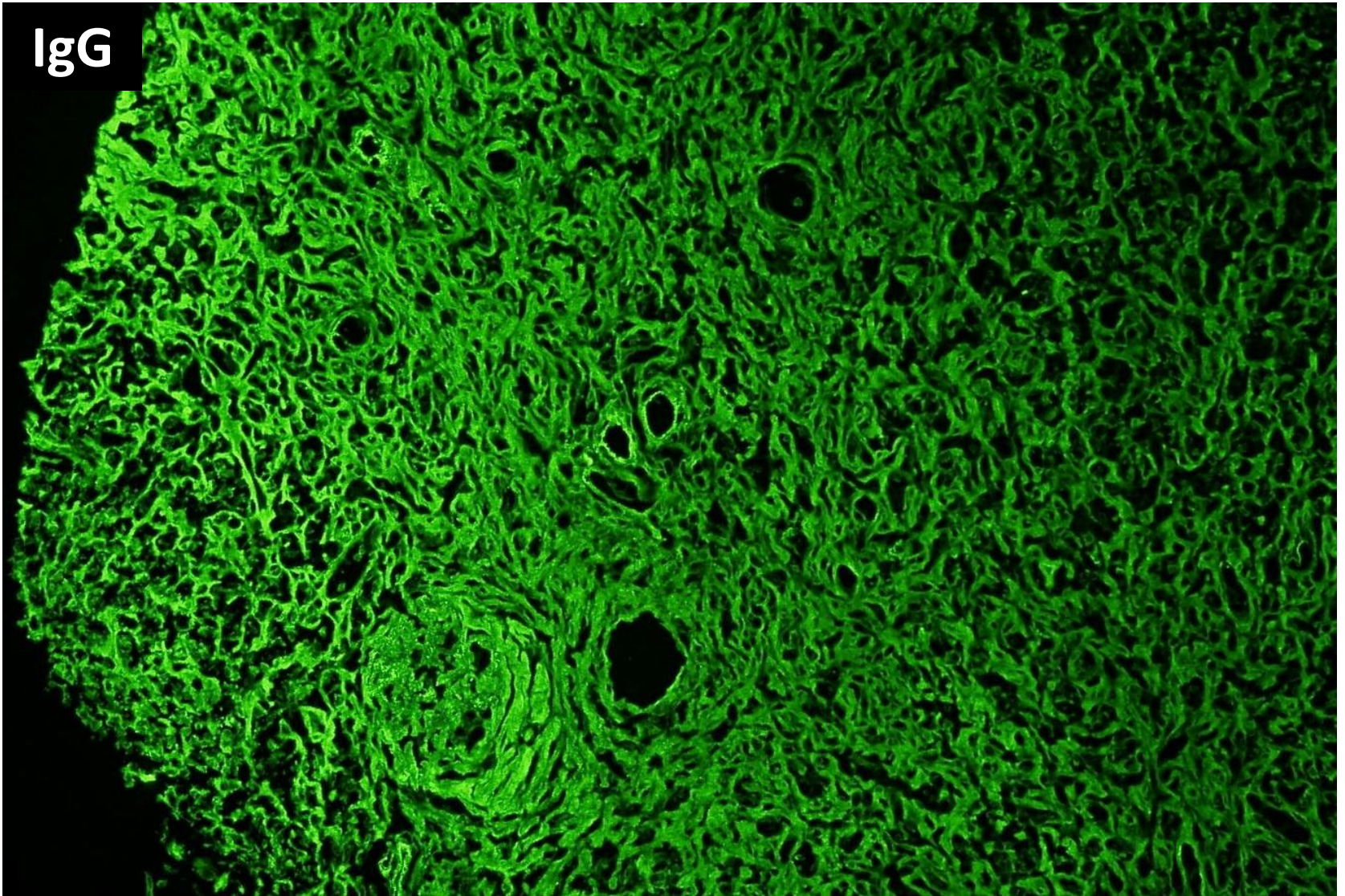


**IgG4**

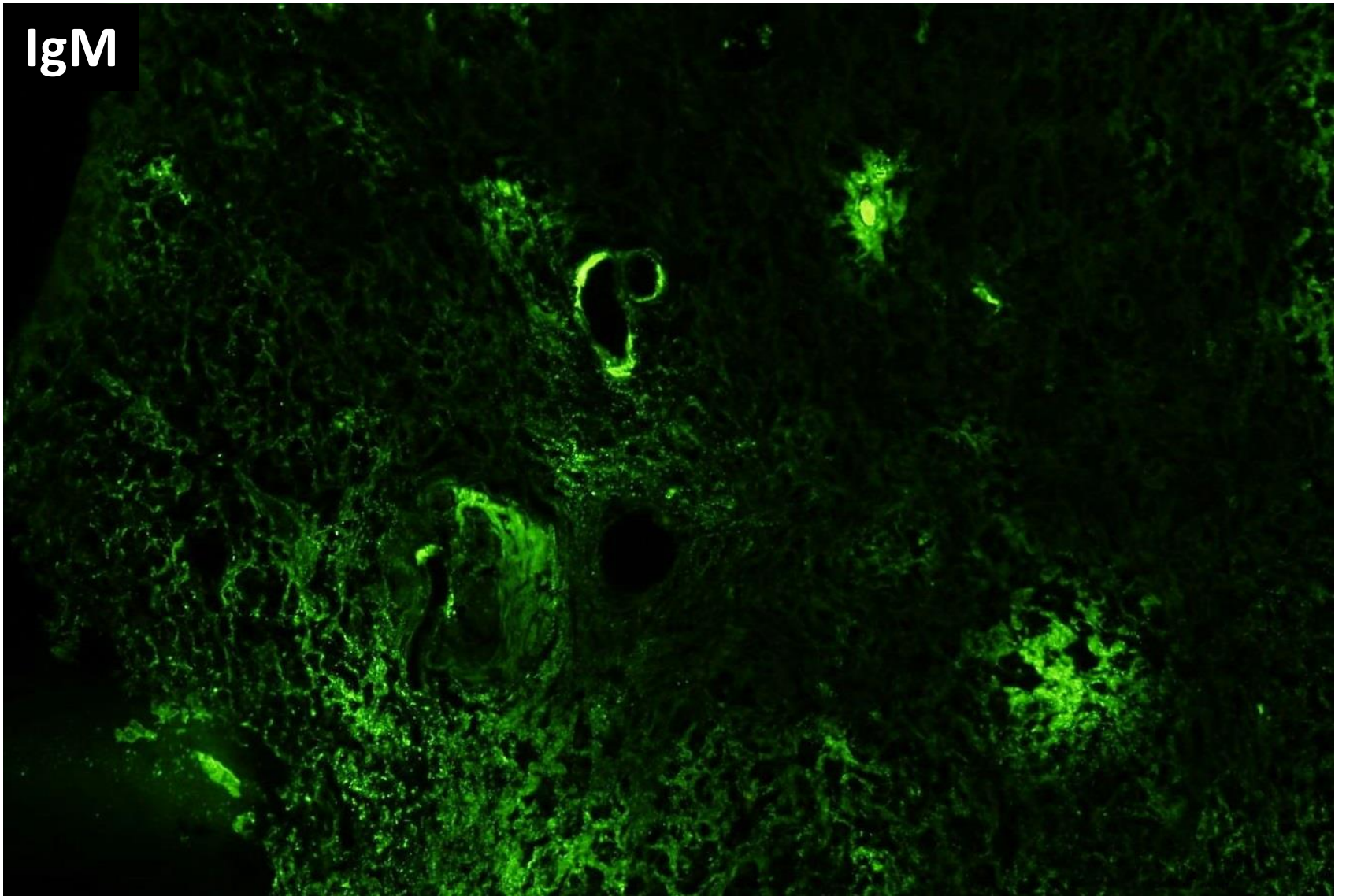
Zoom 2x 30.351 mm<sup>2</sup> 30°



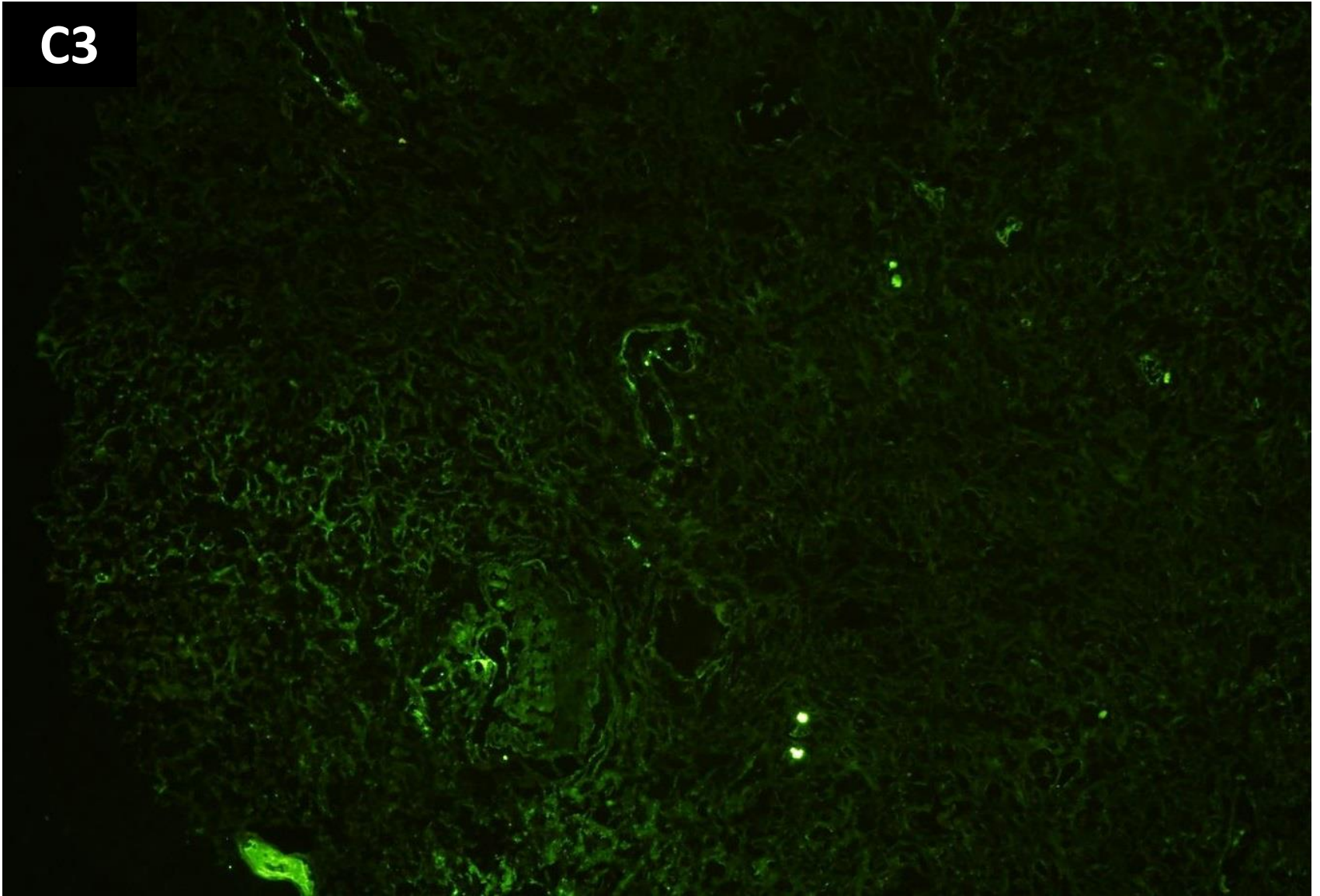
IgG



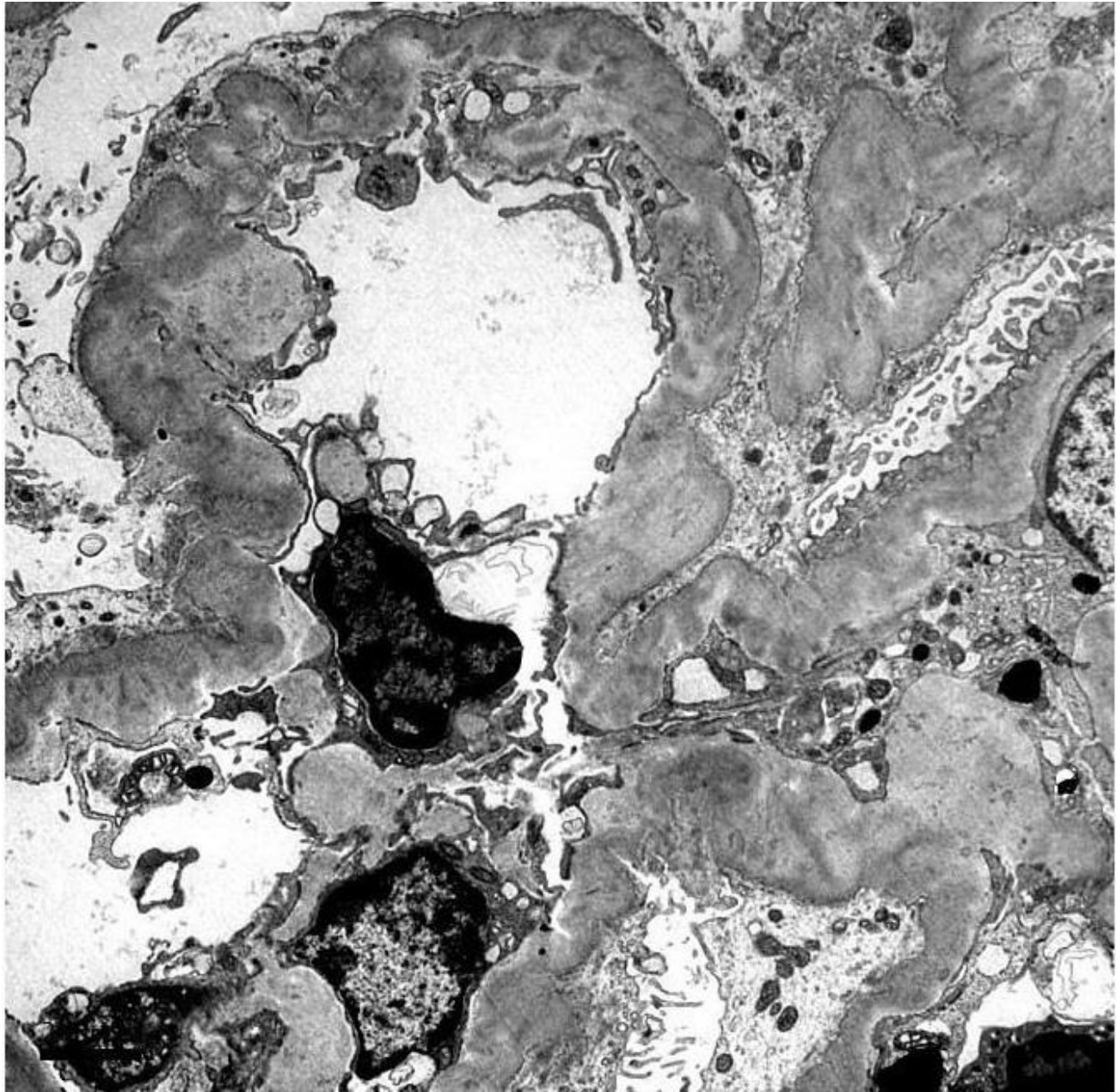
IgM



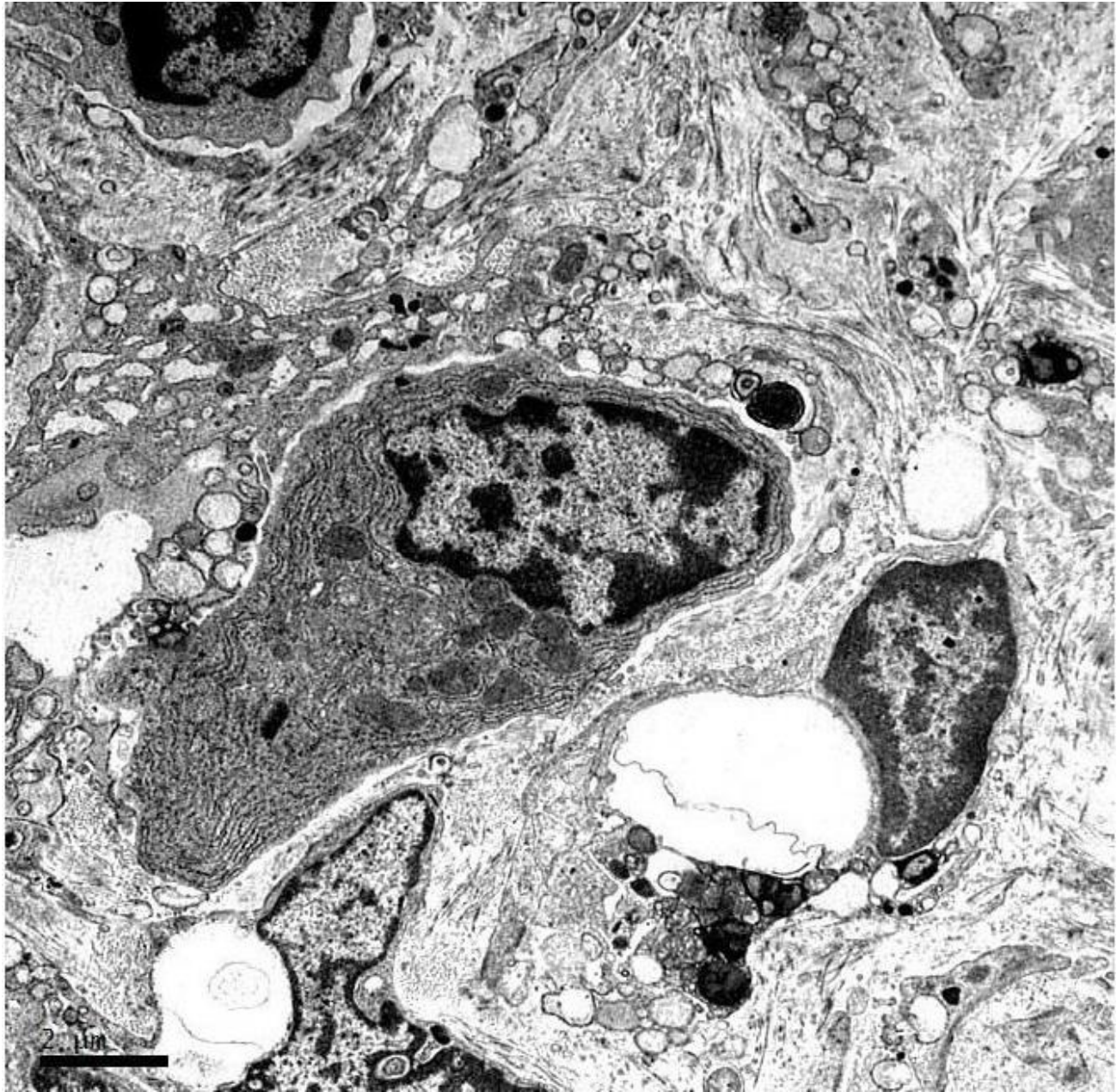
C3













# RENAL BIOPSY CLINICOPATHOLOGICAL WORKSHOP 2018



**PATHOLOGY**



Division of Pathology  
Singapore General Hospital



Department of Renal Medicine  
Singapore General Hospital



**MEDICINE**