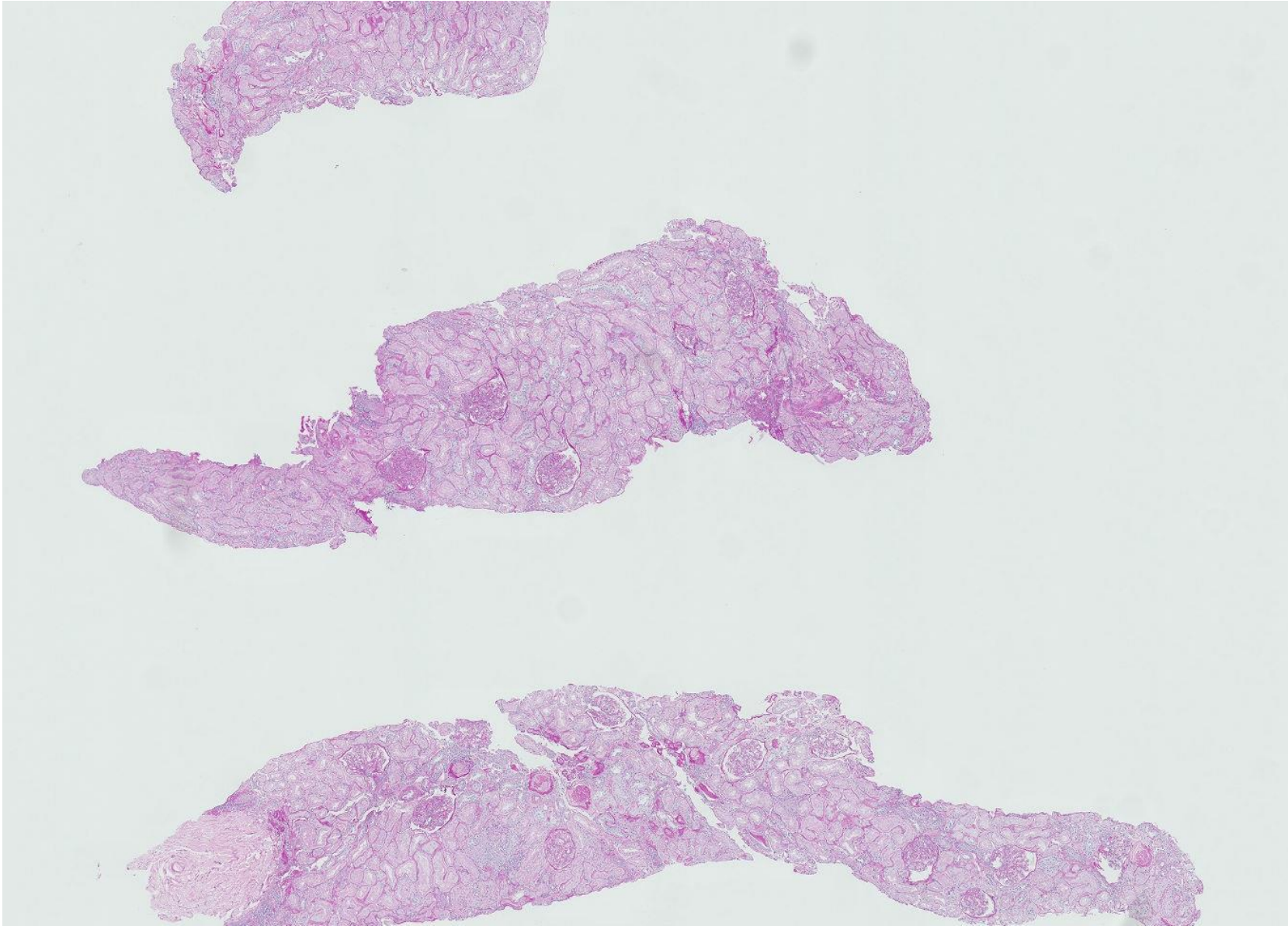


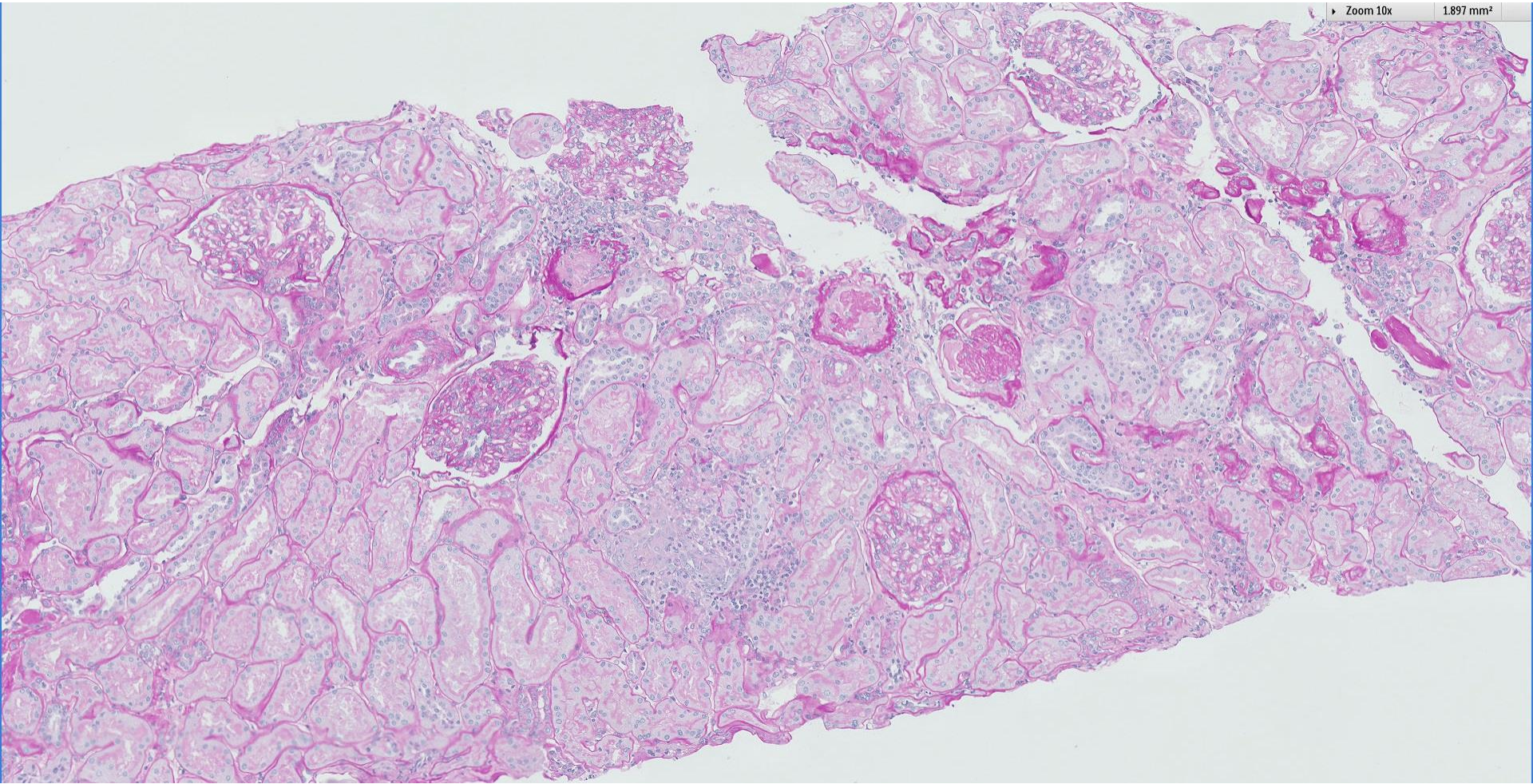
## Case 65

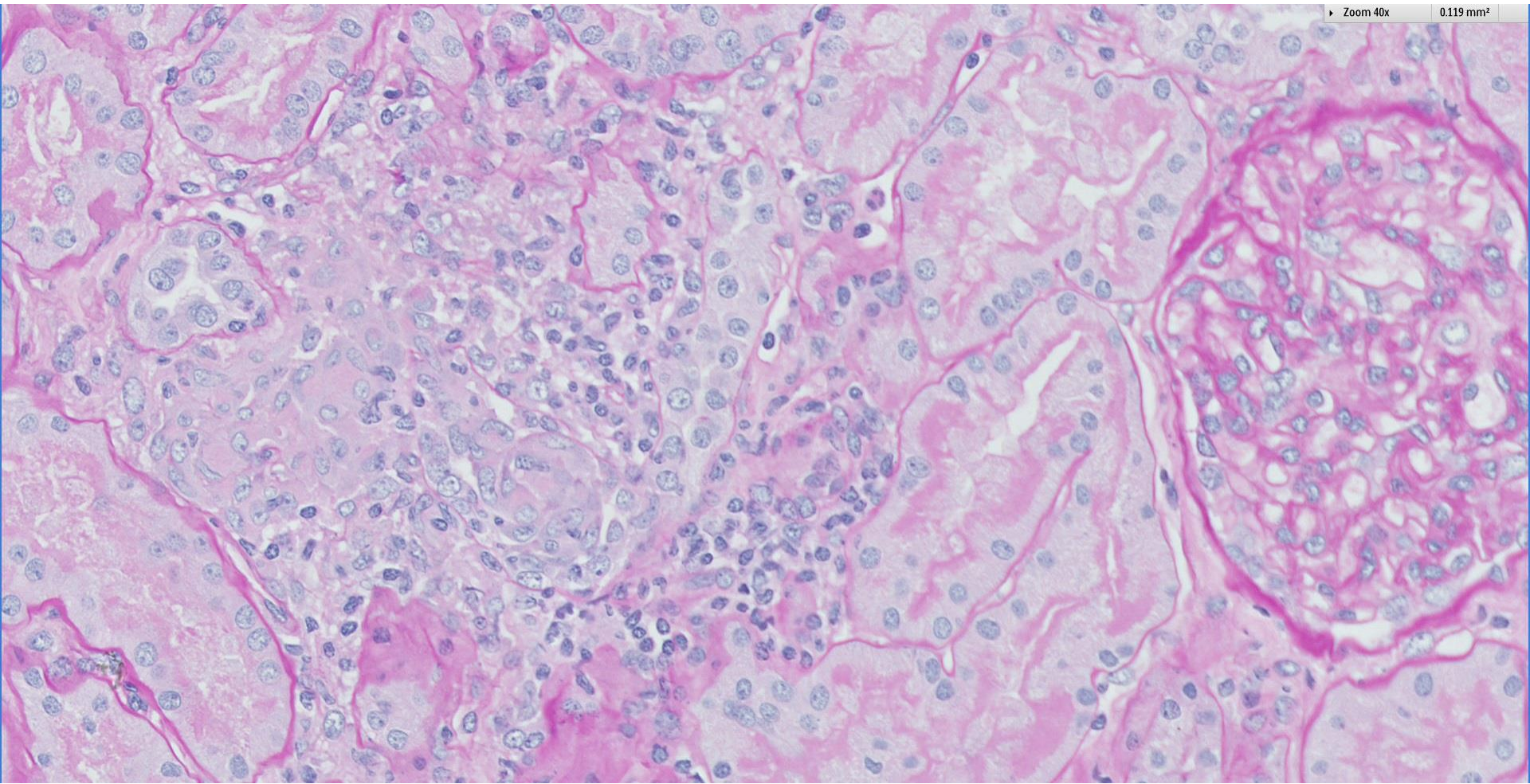
43 year old lady with history of spondyloarthropathy on sulphasalazine. Presented with nephrotic range proteinuria with mild haematuria. Preserved renal function.

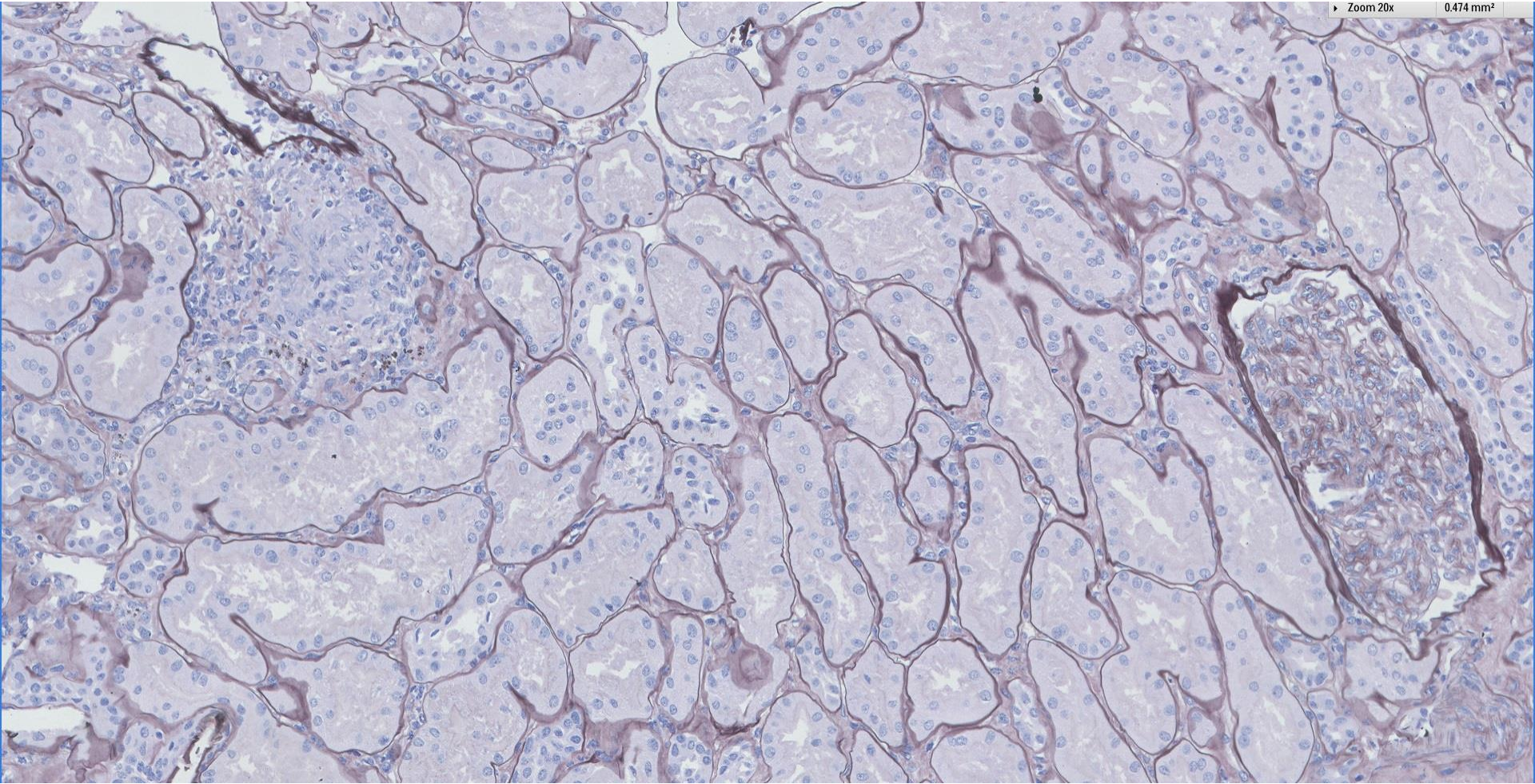


Zoom 10x

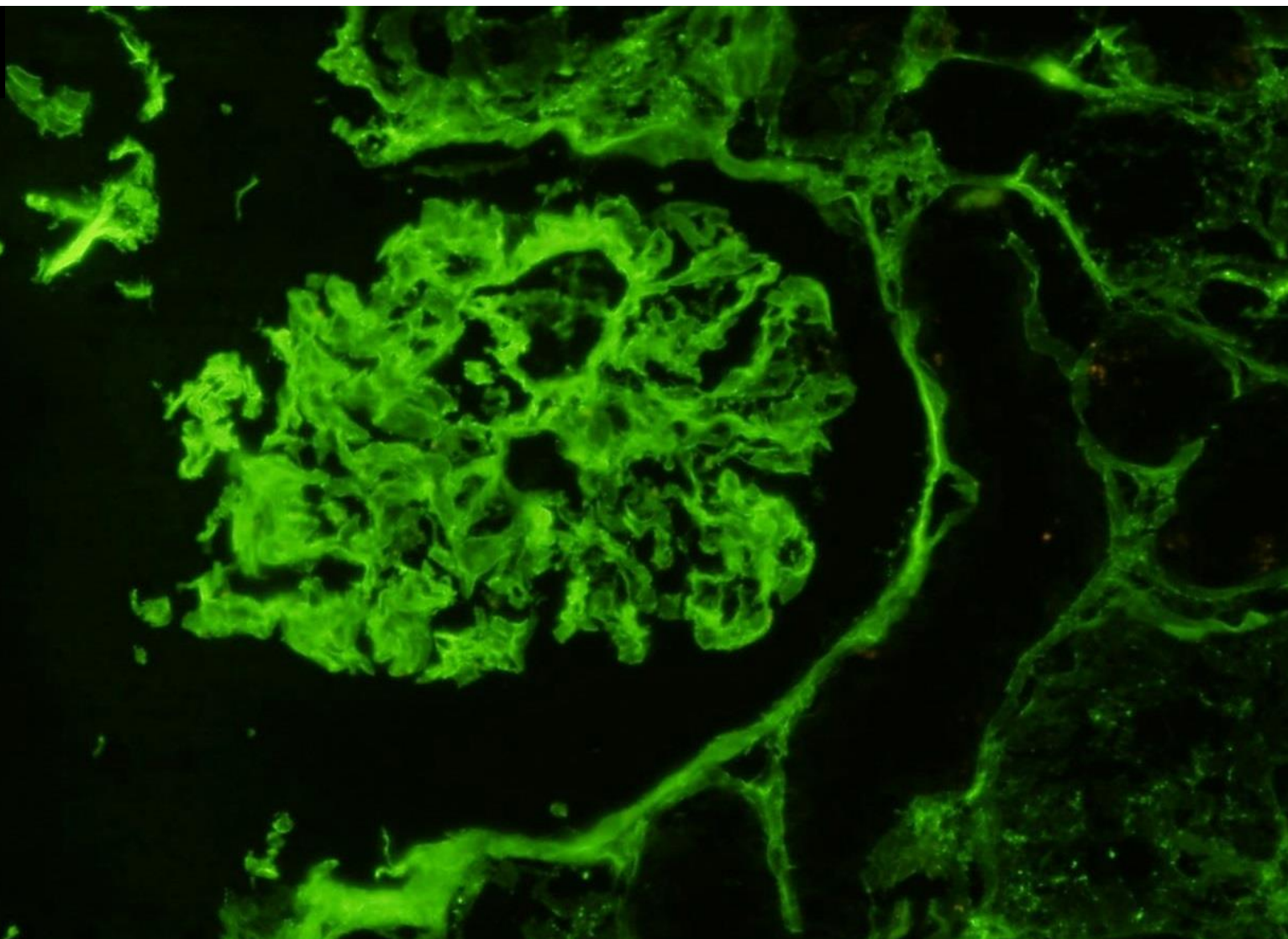
1.697 mm<sup>2</sup>



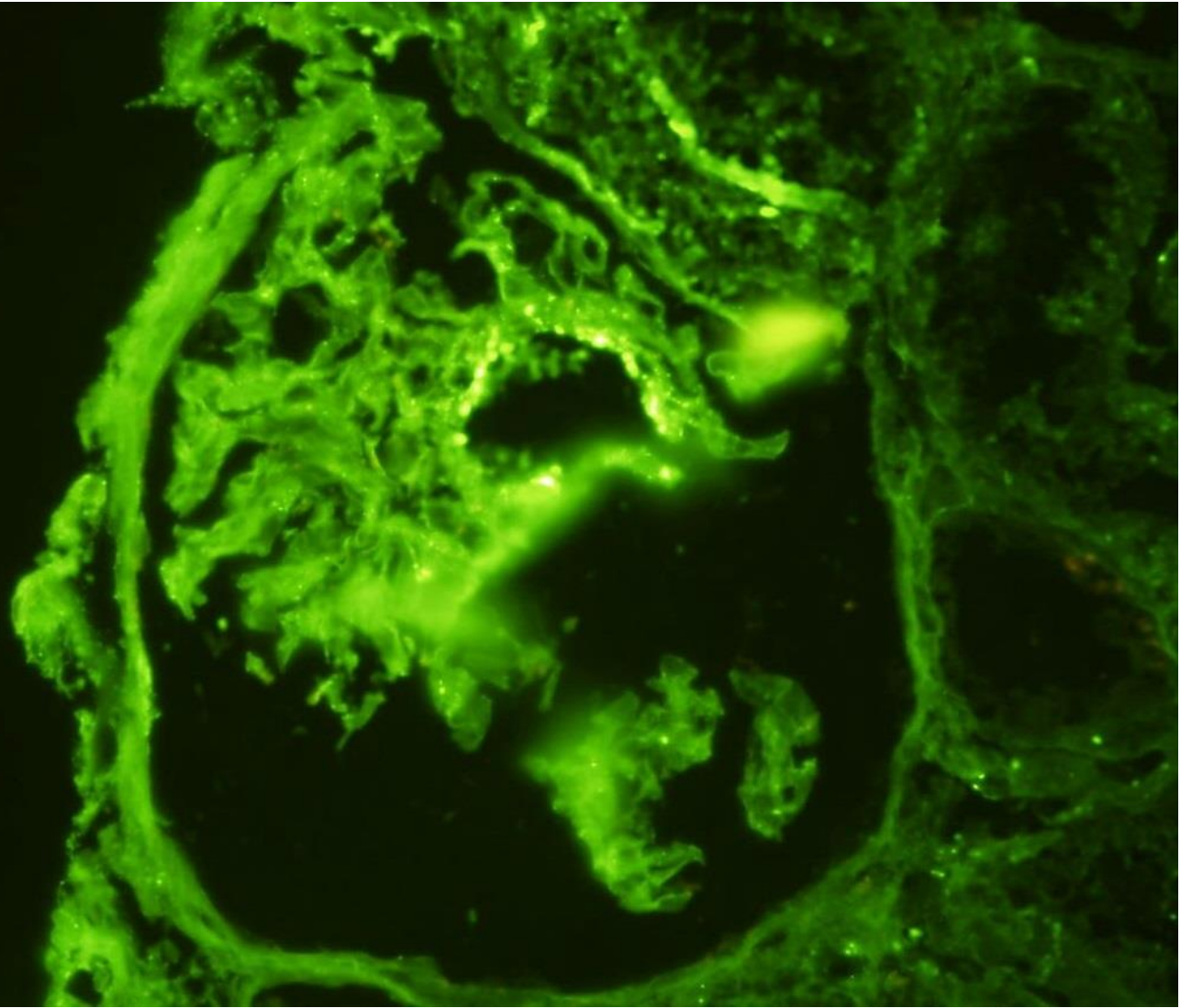


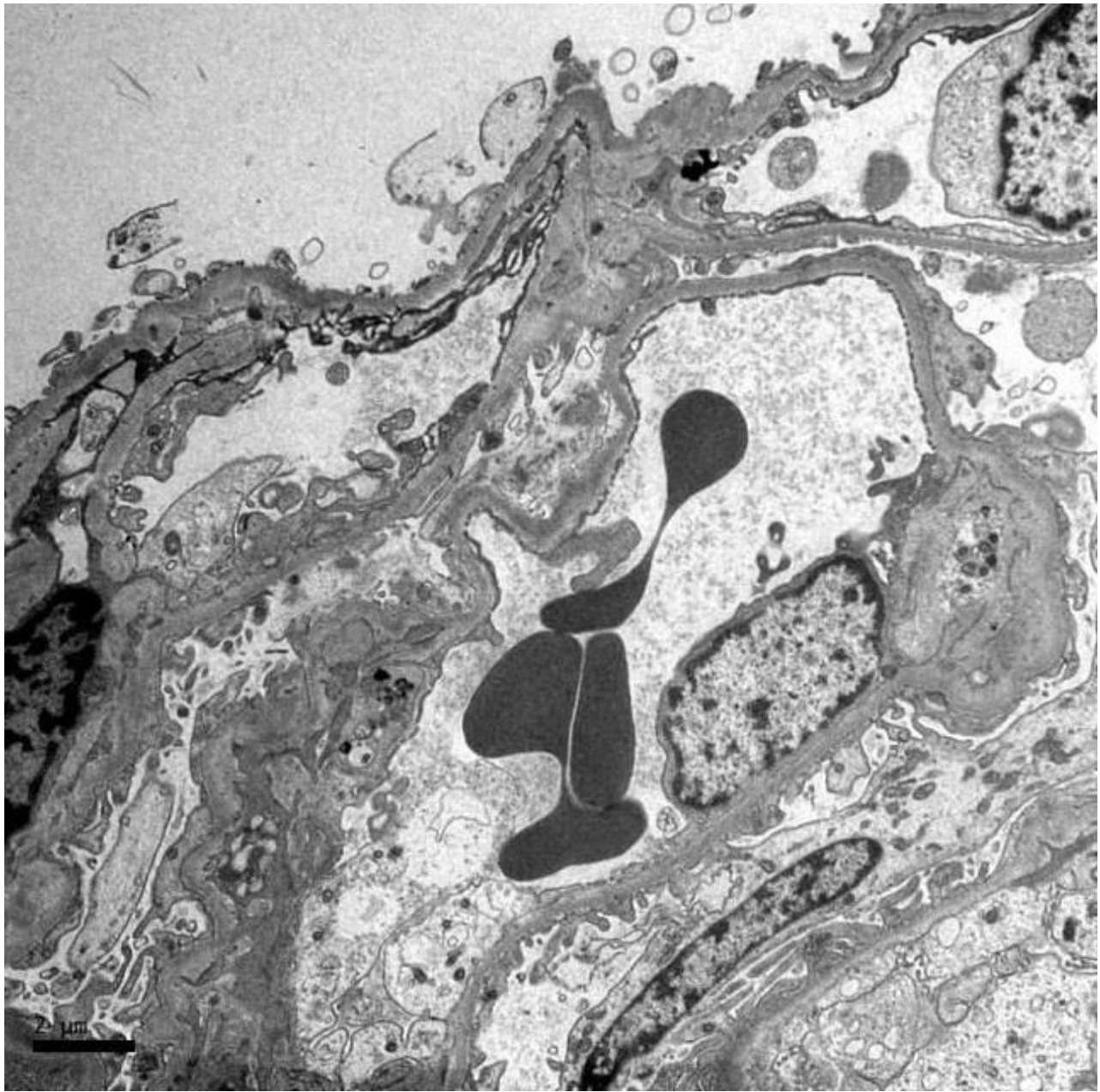


IgG

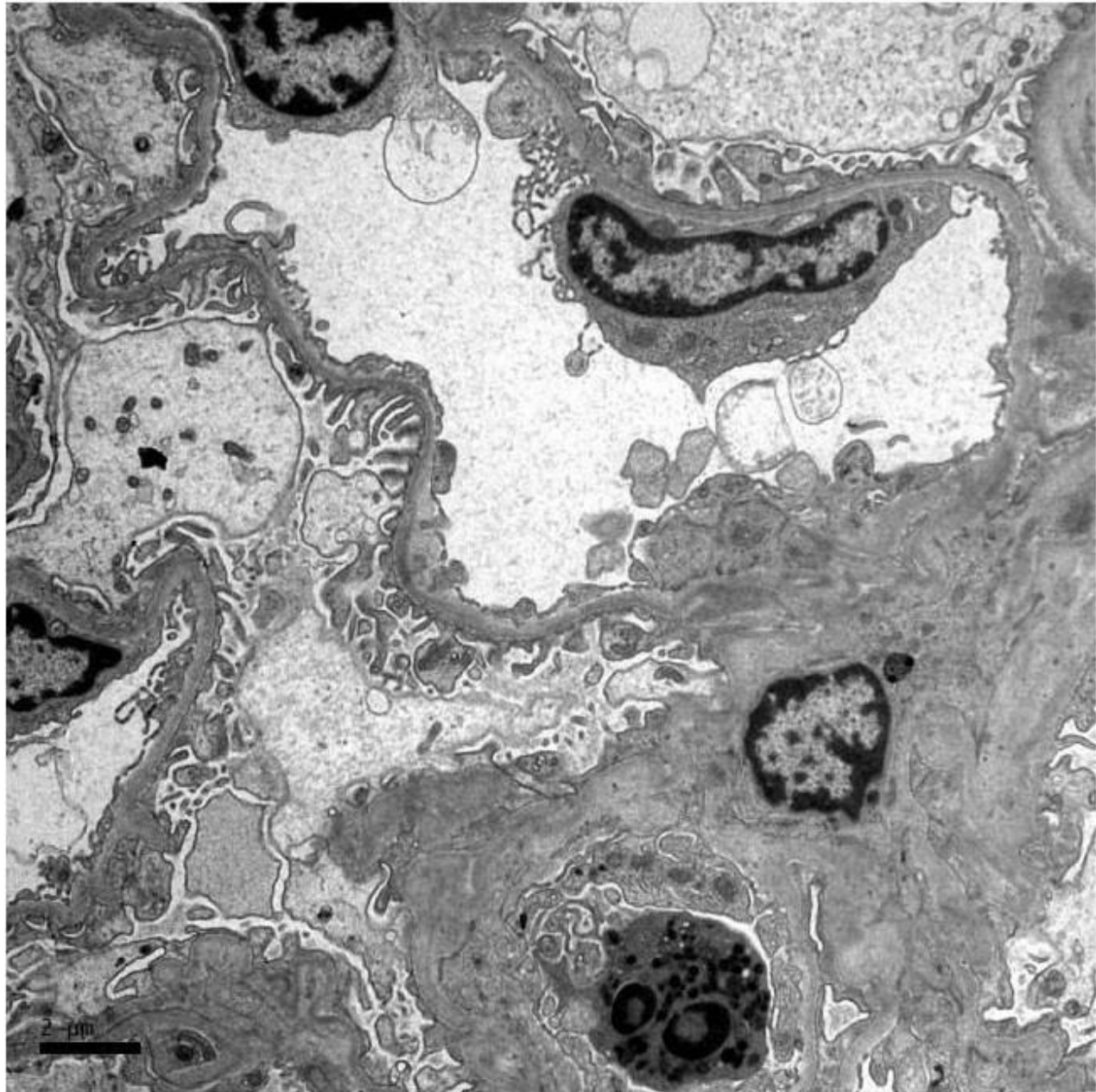


C3











# RENAL BIOPSY CLINICOPATHOLOGICAL WORKSHOP 2018



**PATHOLOGY**



Division of Pathology  
Singapore General Hospital



Department of Renal Medicine  
Singapore General Hospital



**MEDICINE**