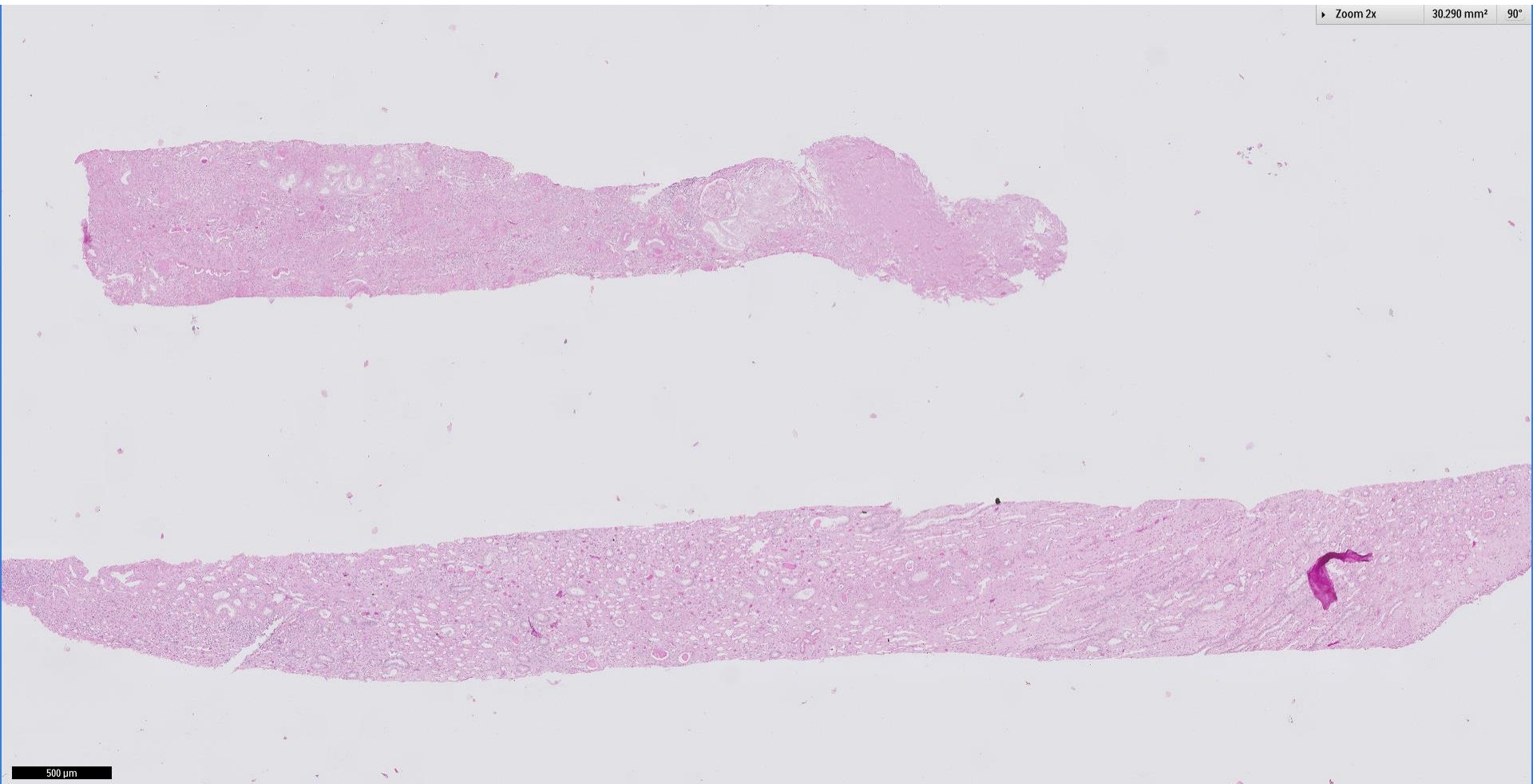
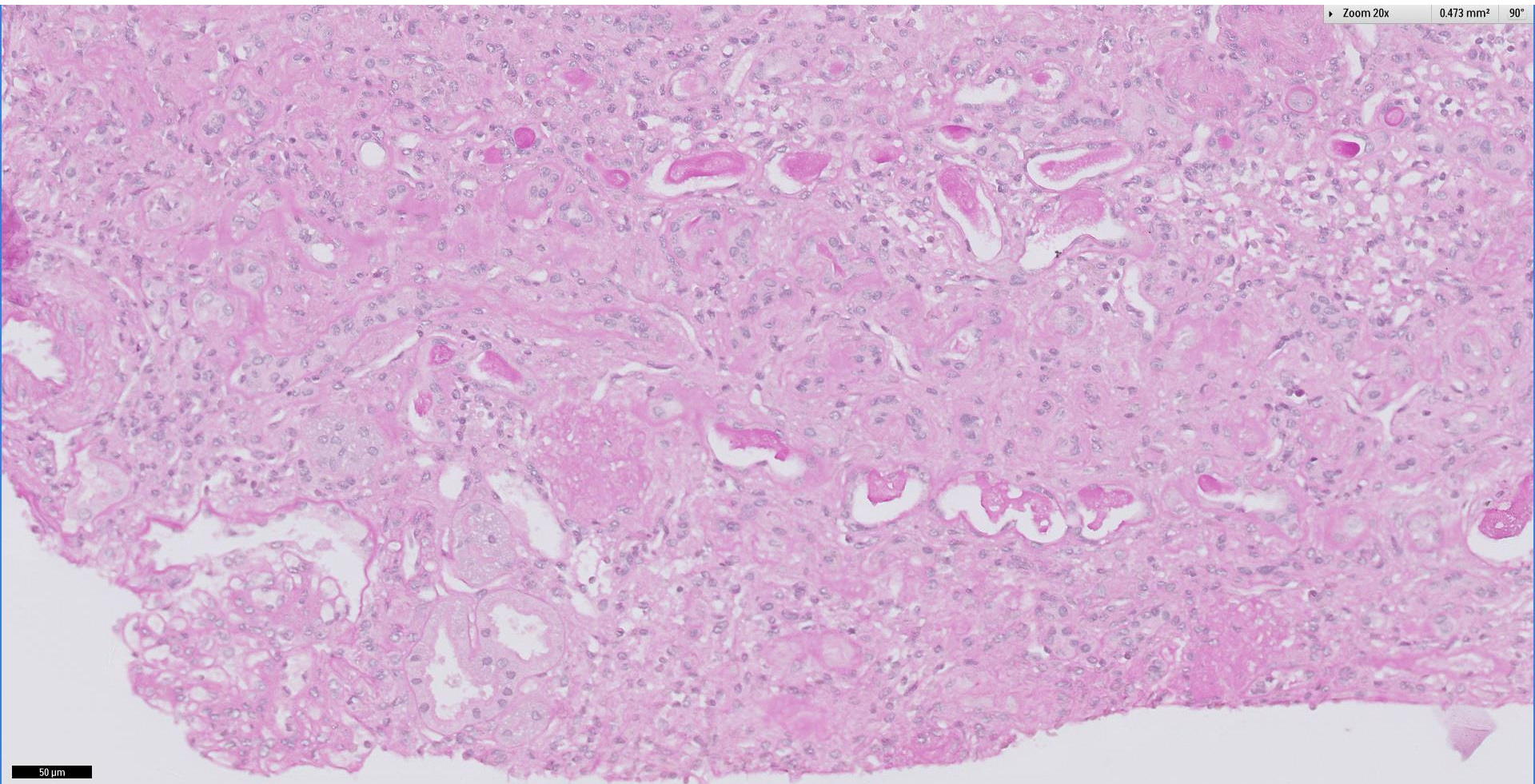


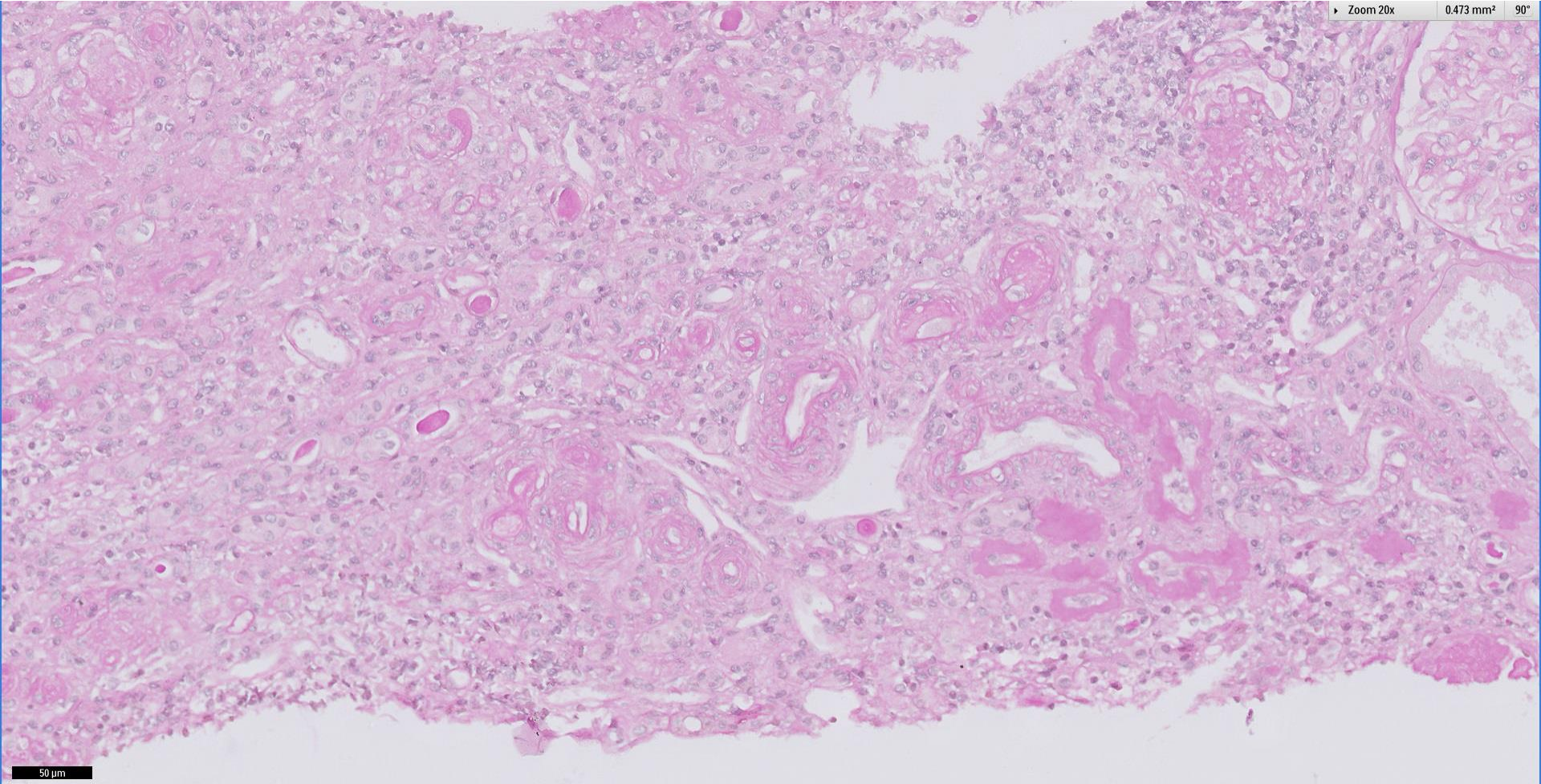
Case 64

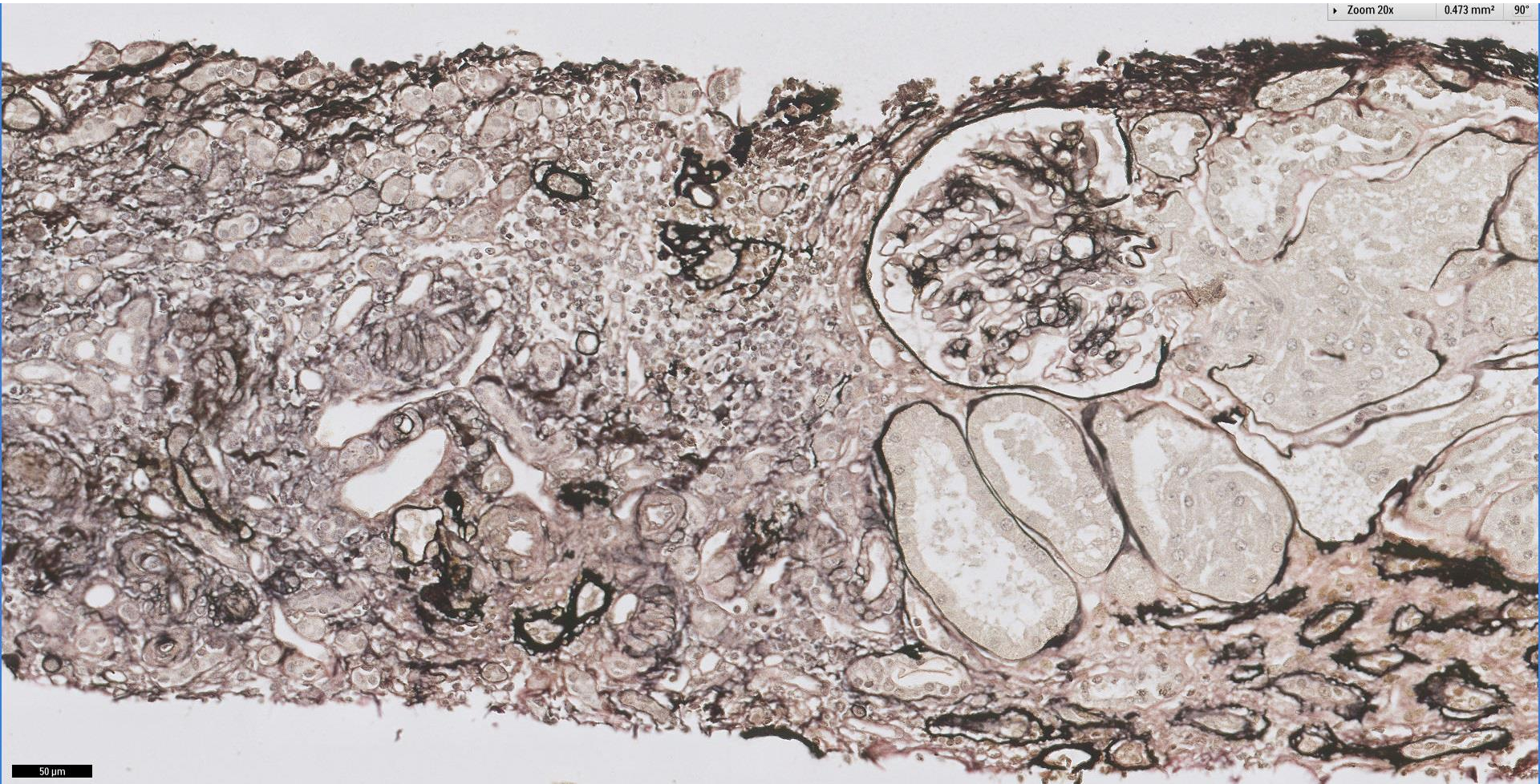
25 year old Chinese lady, background of CKD with subnephrotic range proteinuria. Developed rapidly worsening renal function, precipitated by postpartum poorly controlled hypertension.



500 μm

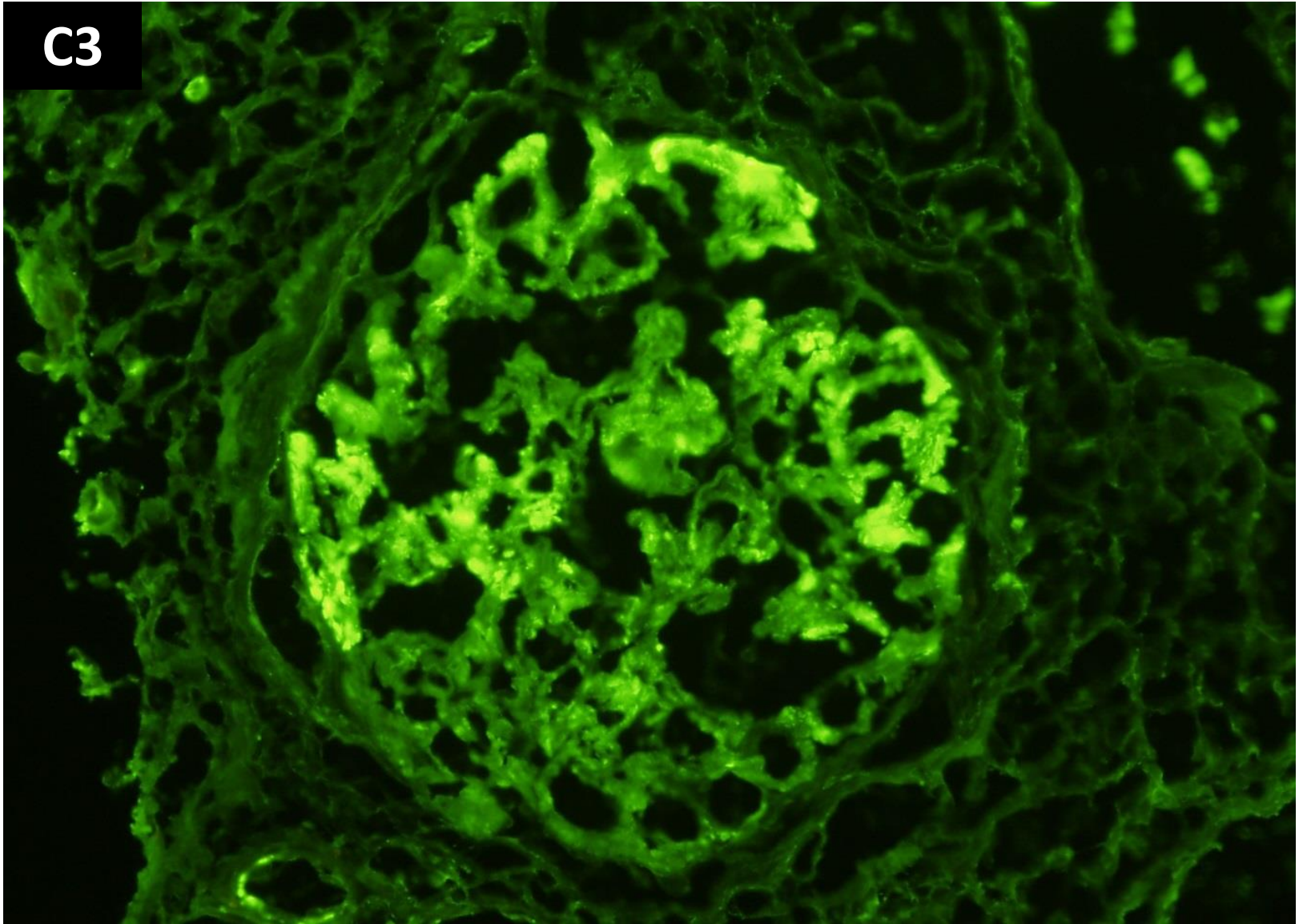




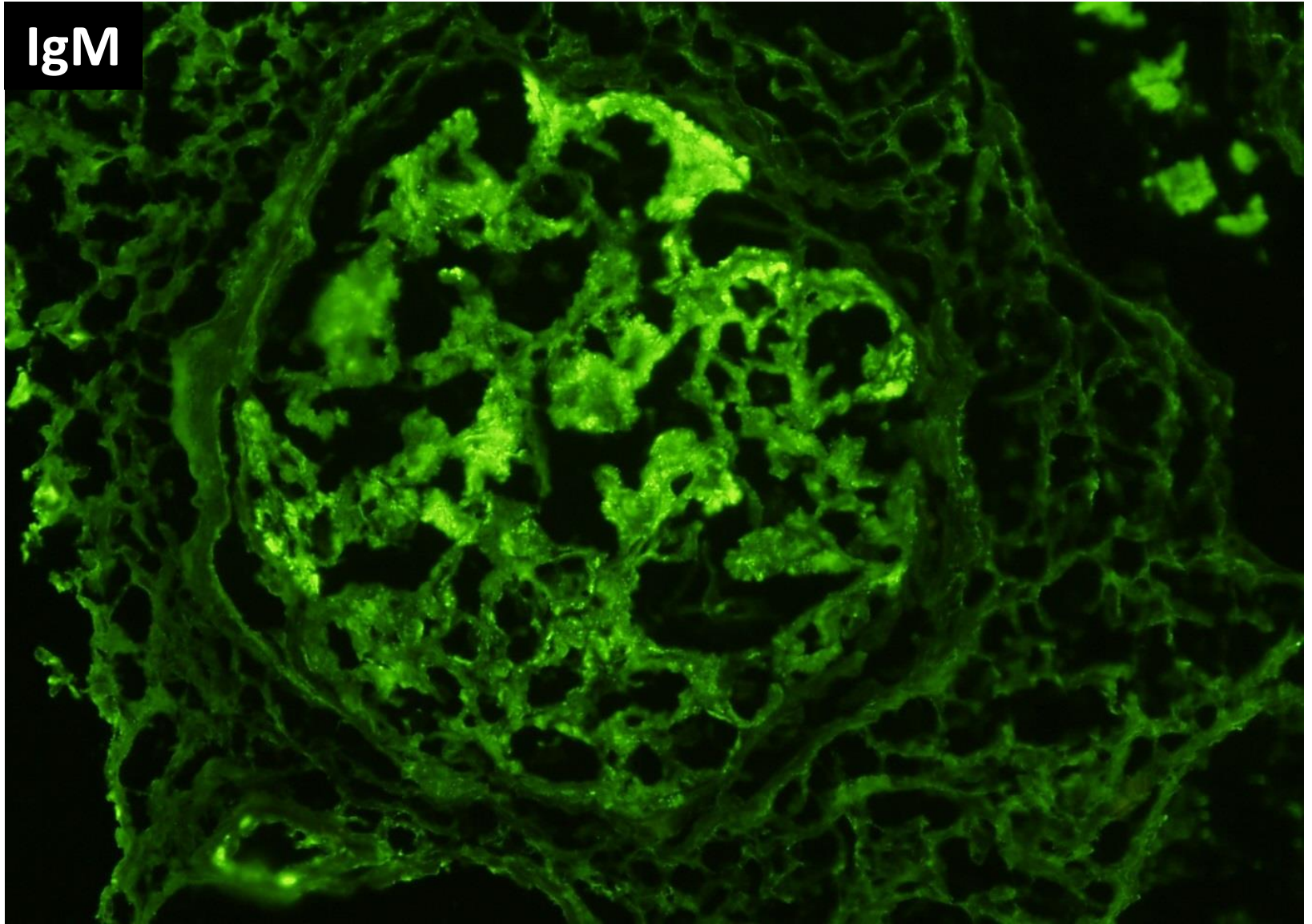


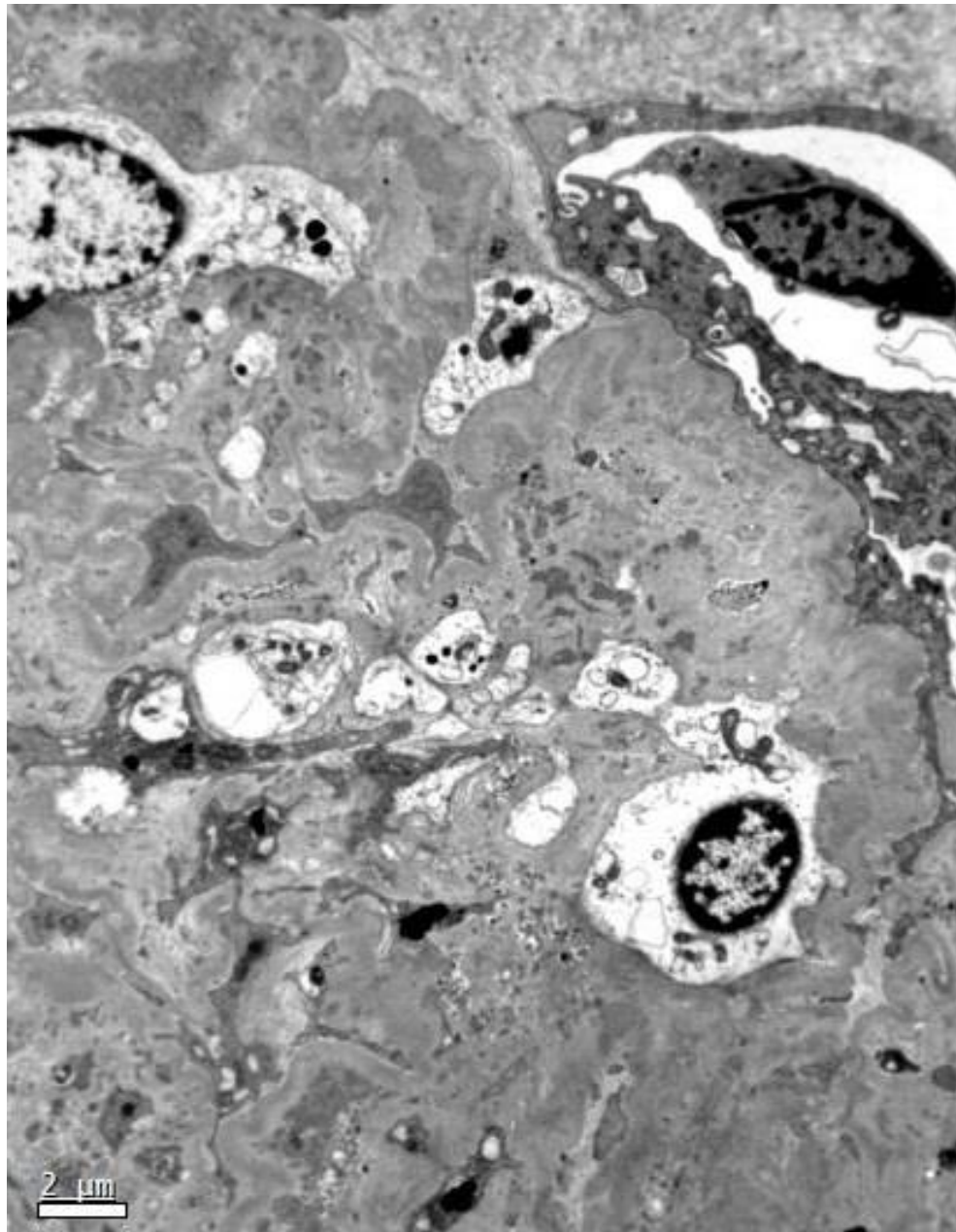
50 μm

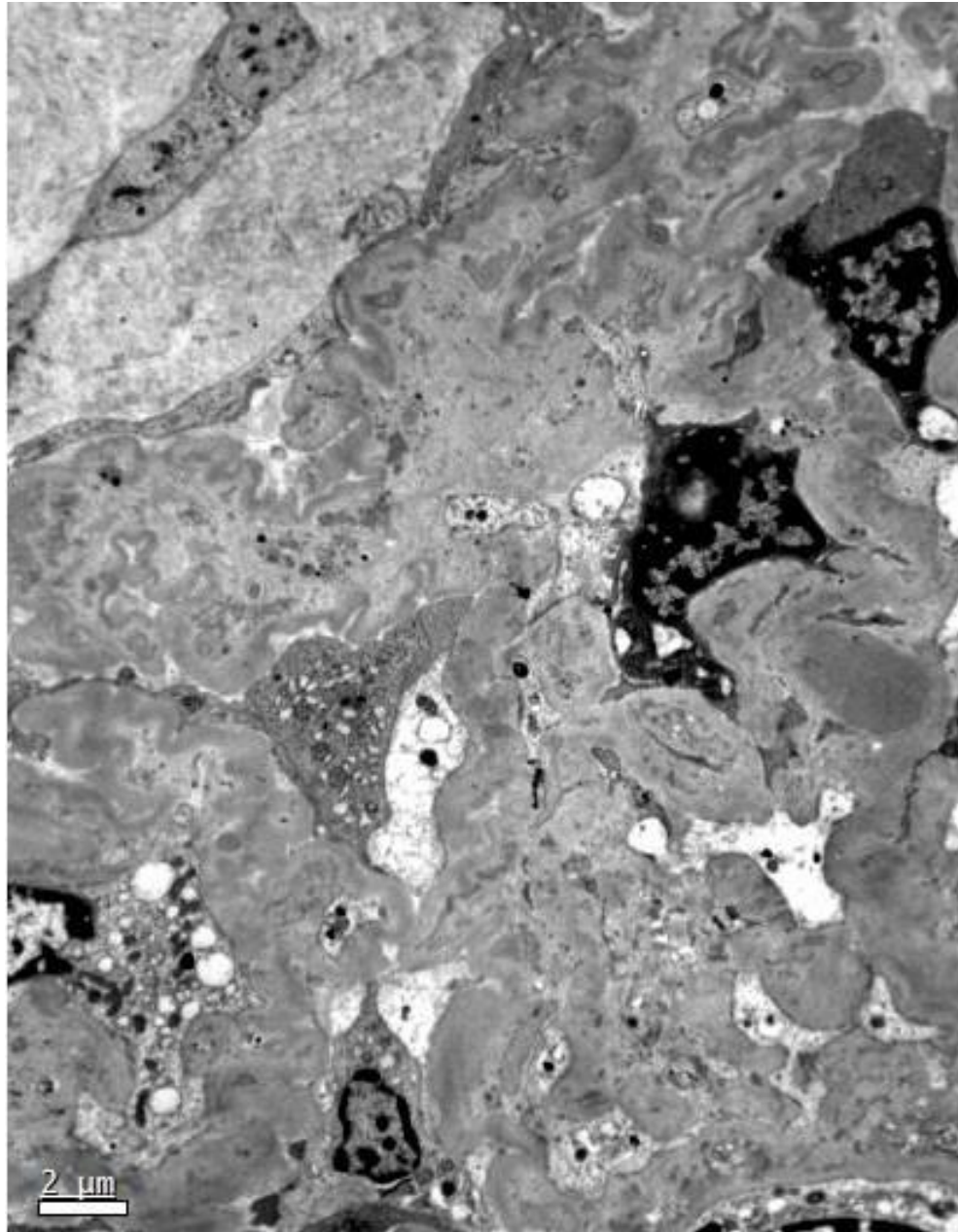
C3

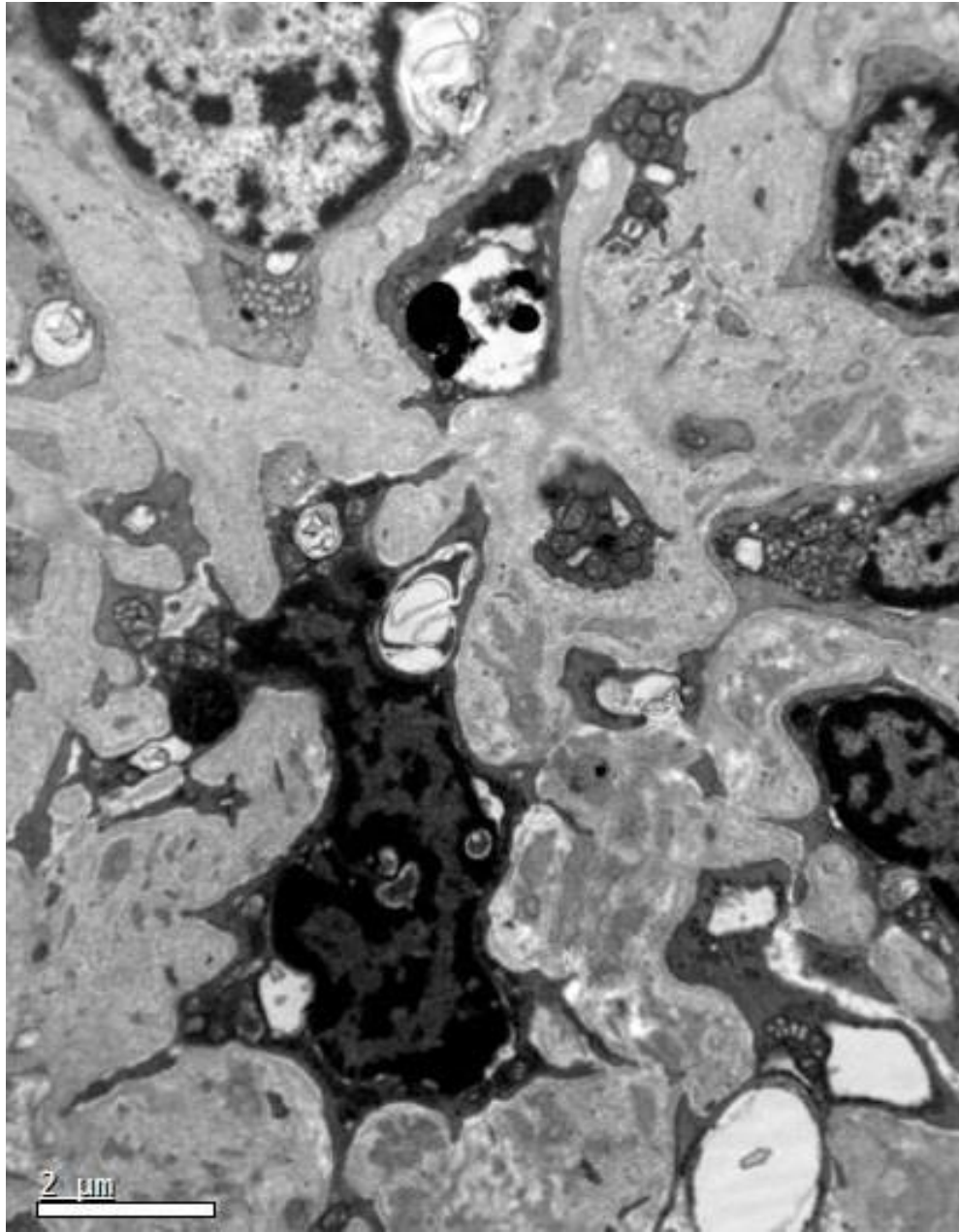


IgM











RENAL BIOPSY CLINICOPATHOLOGICAL WORKSHOP 2018



PATHOLOGY



Division of Pathology
Singapore General Hospital



Department of Renal Medicine
Singapore General Hospital



MEDICINE