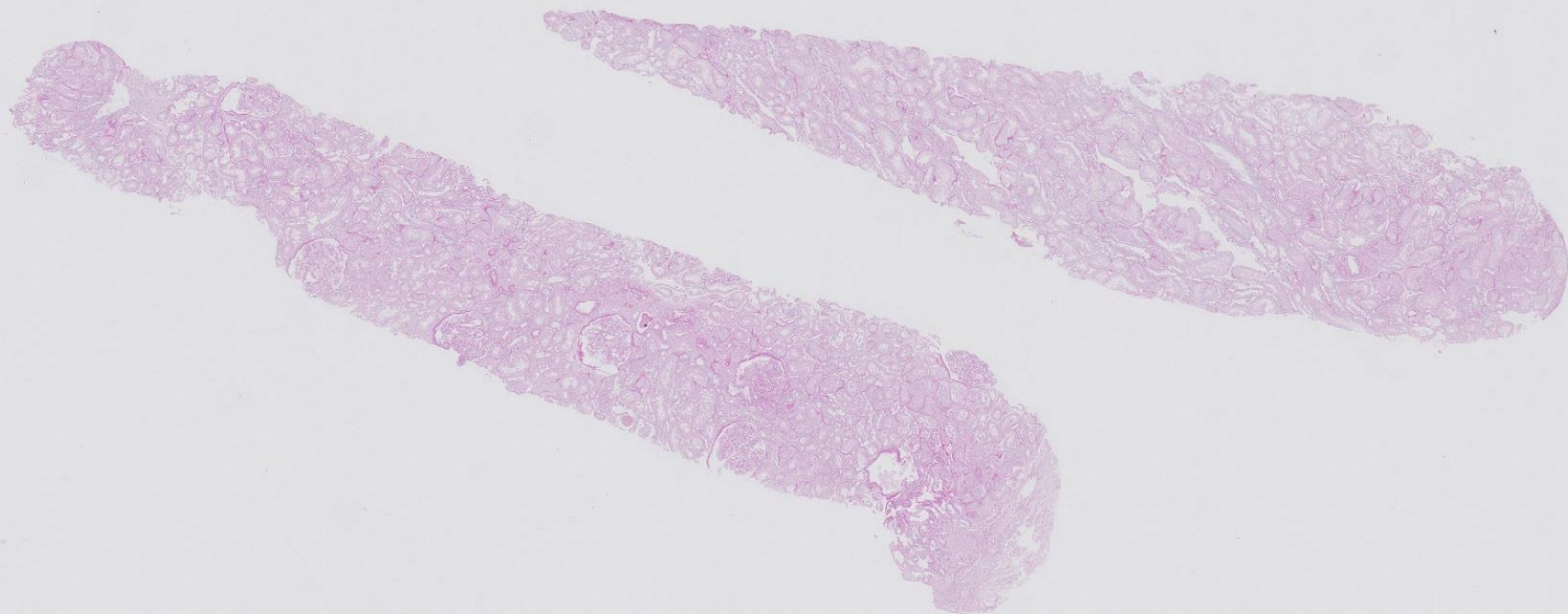
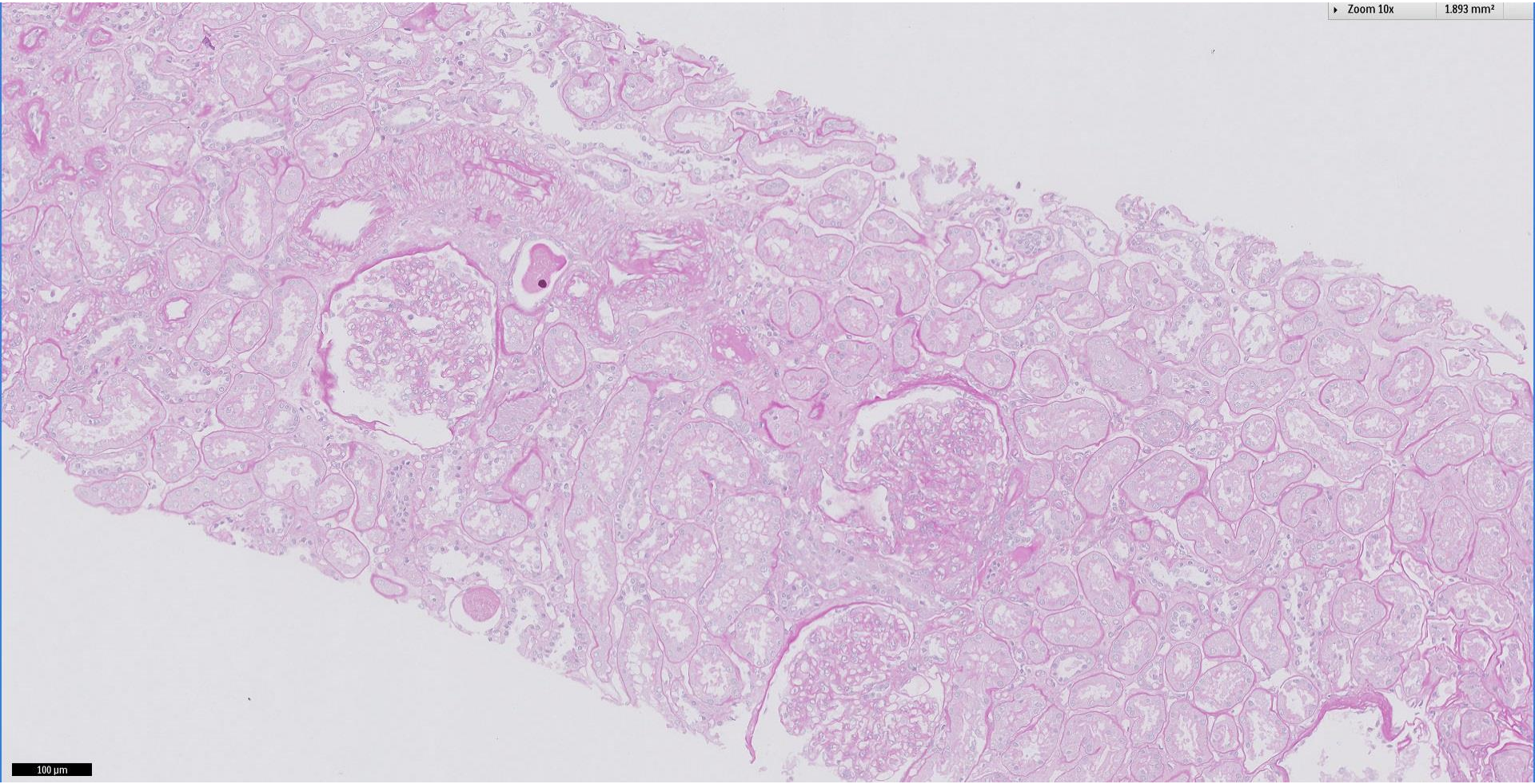


Case 63

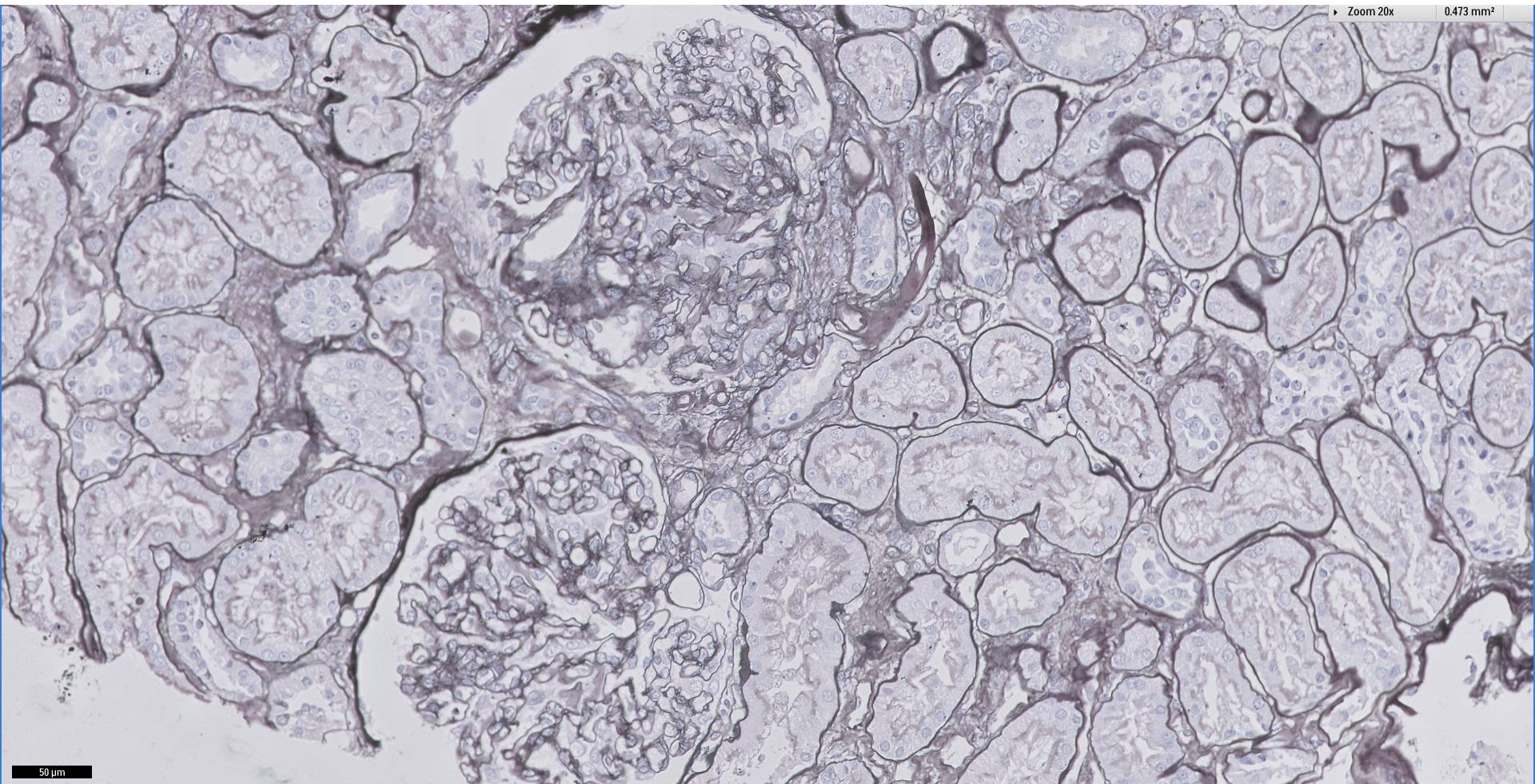
58 year old Chinese man presented with HTN and nephrotic range proteinuria.





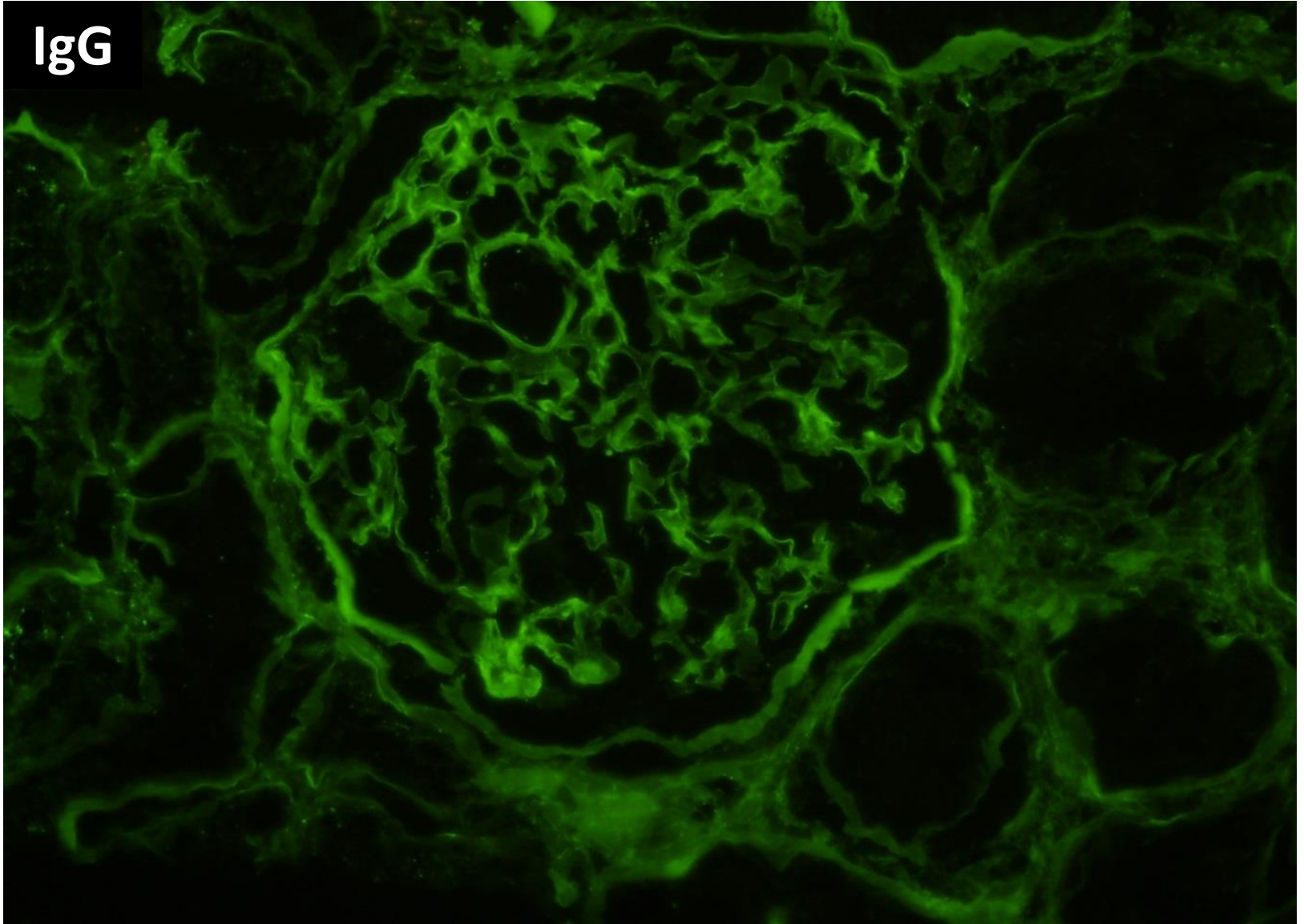
Zoom 20x

0.473 mm²

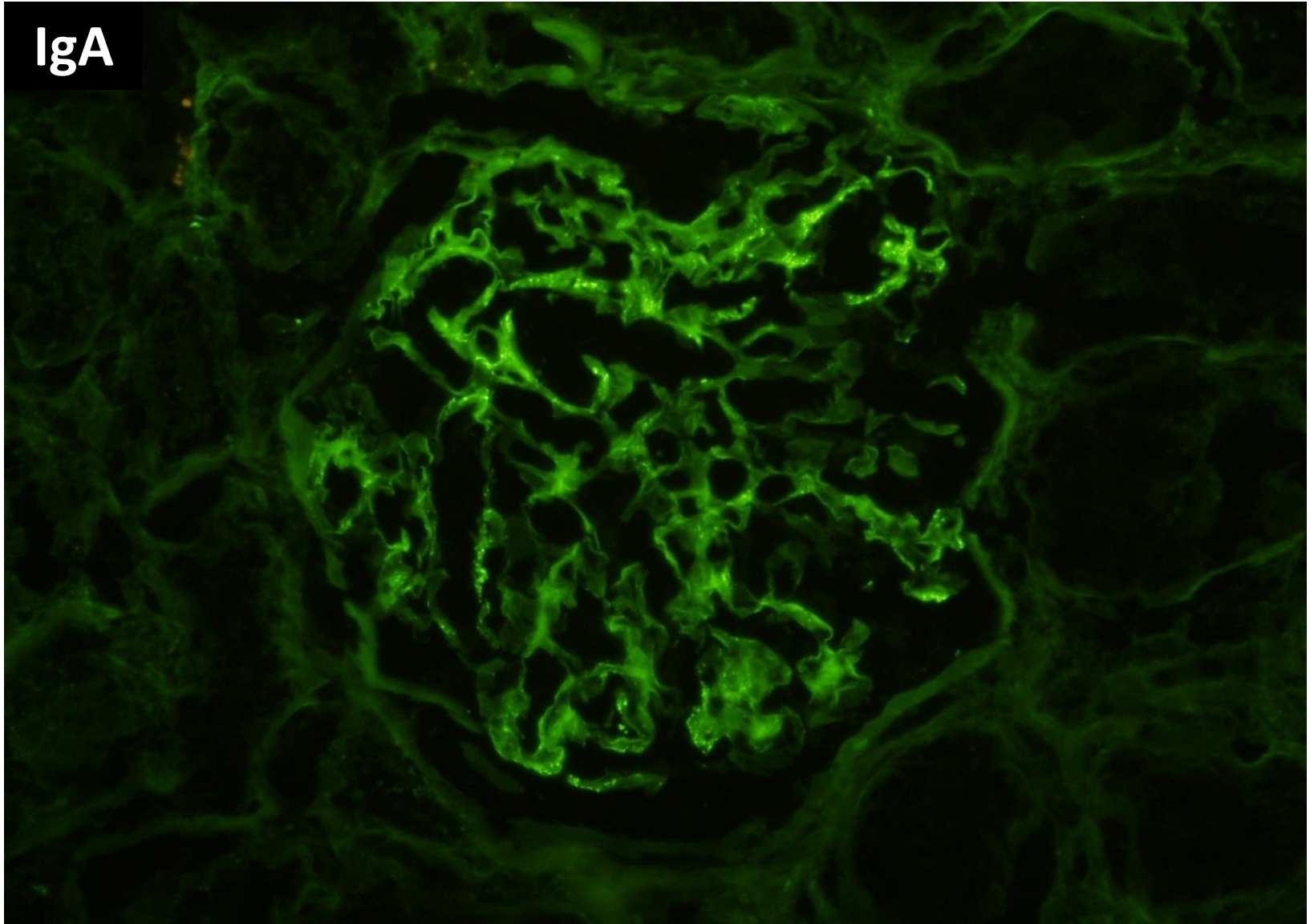


50 μm

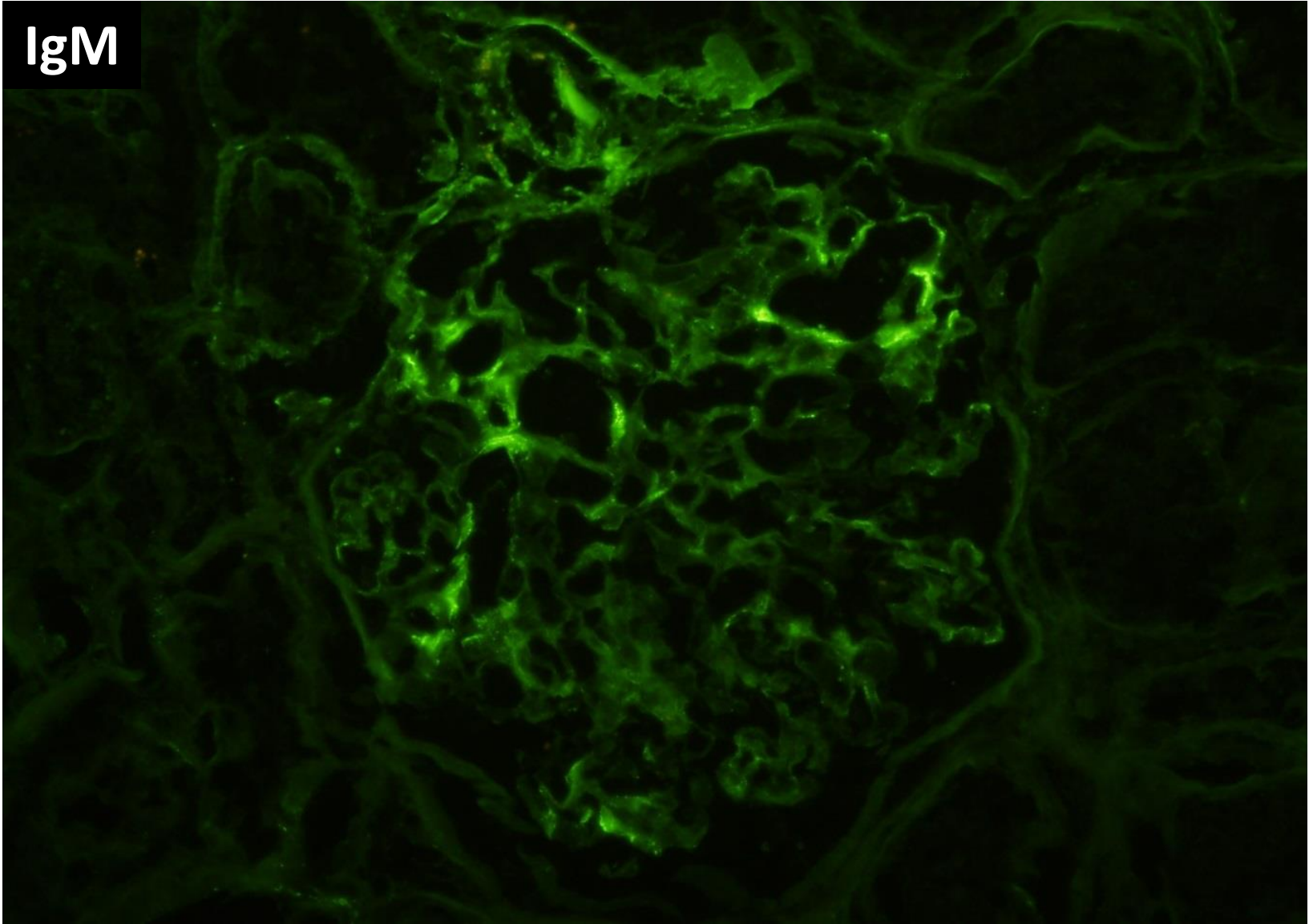
IgG



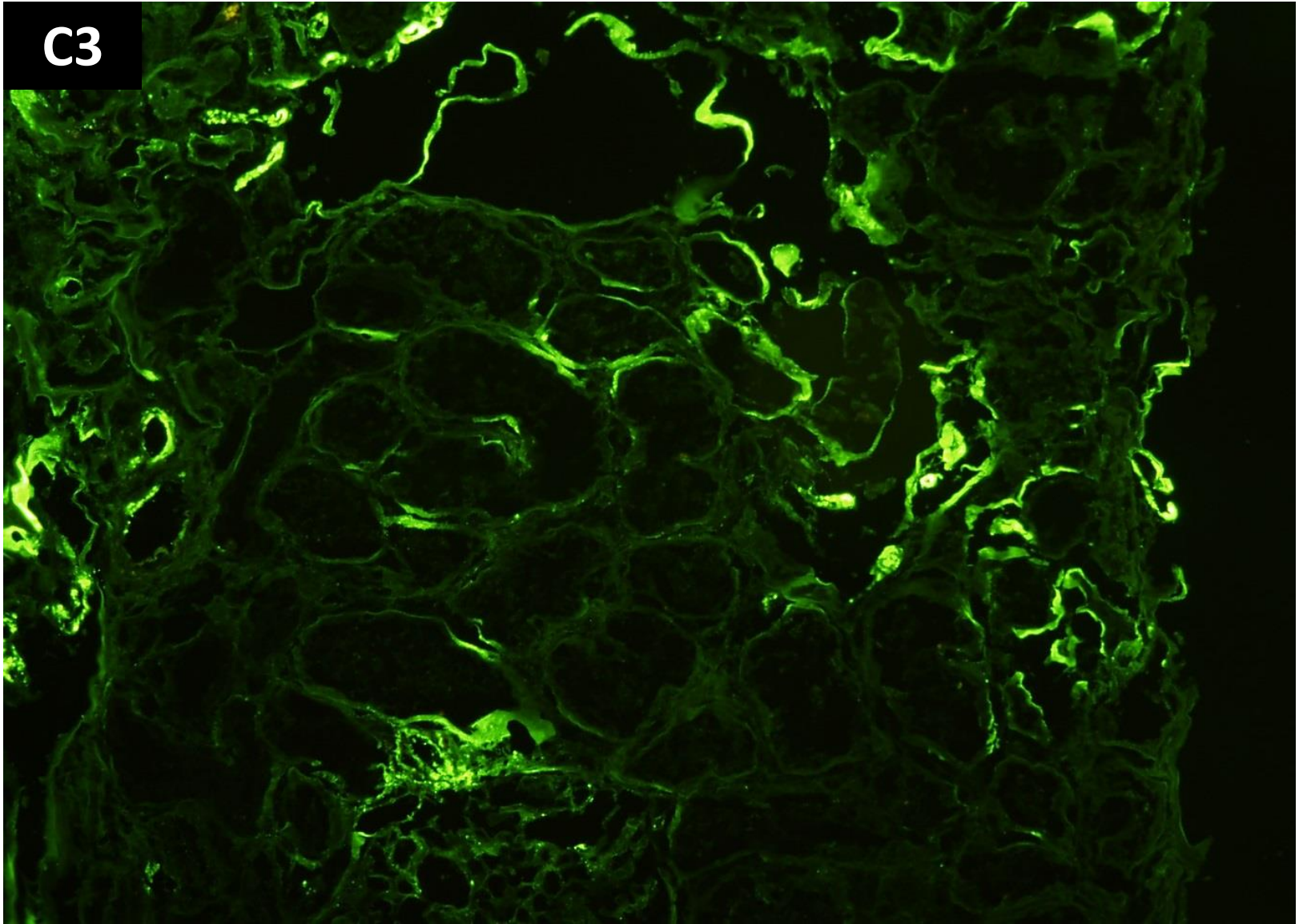
IgA

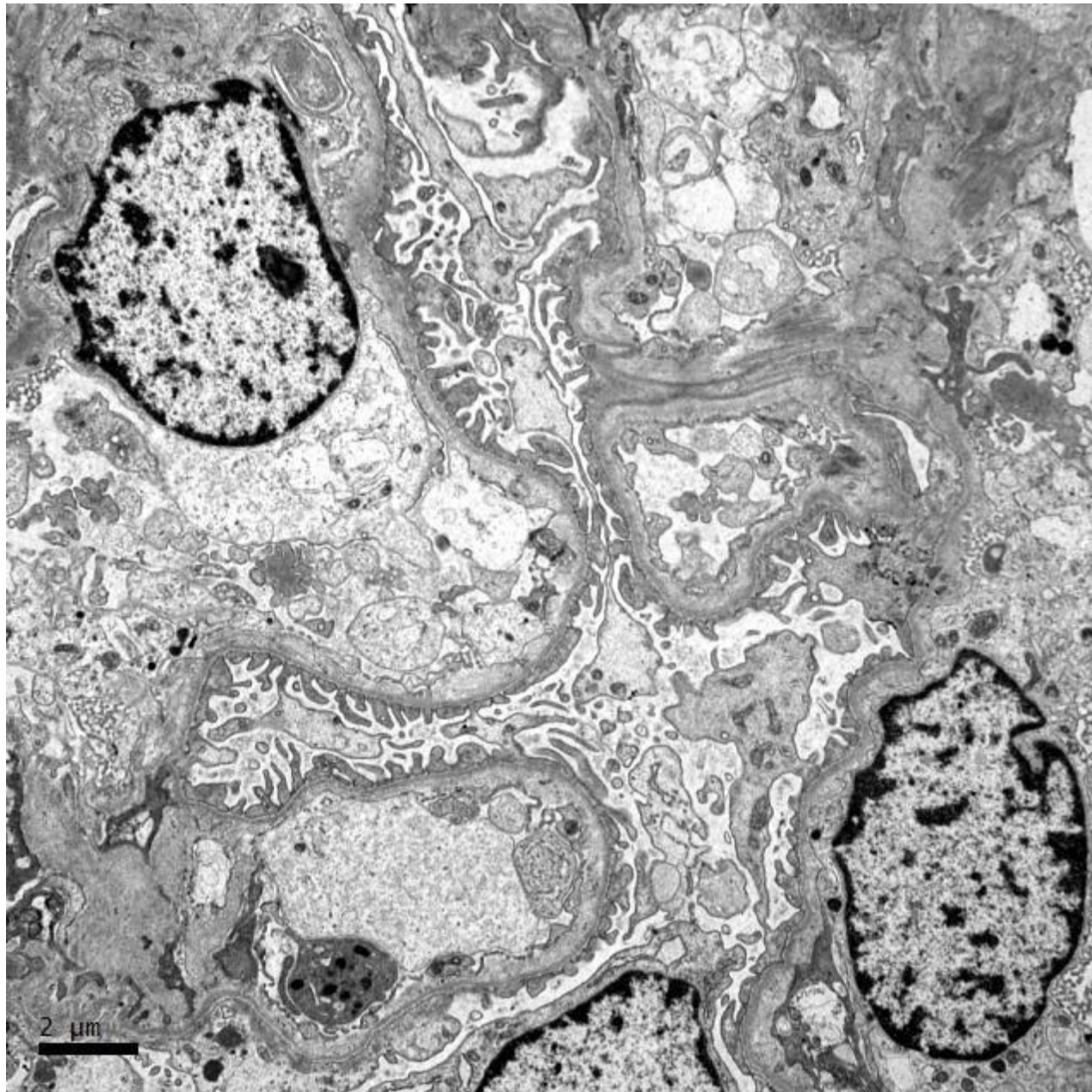


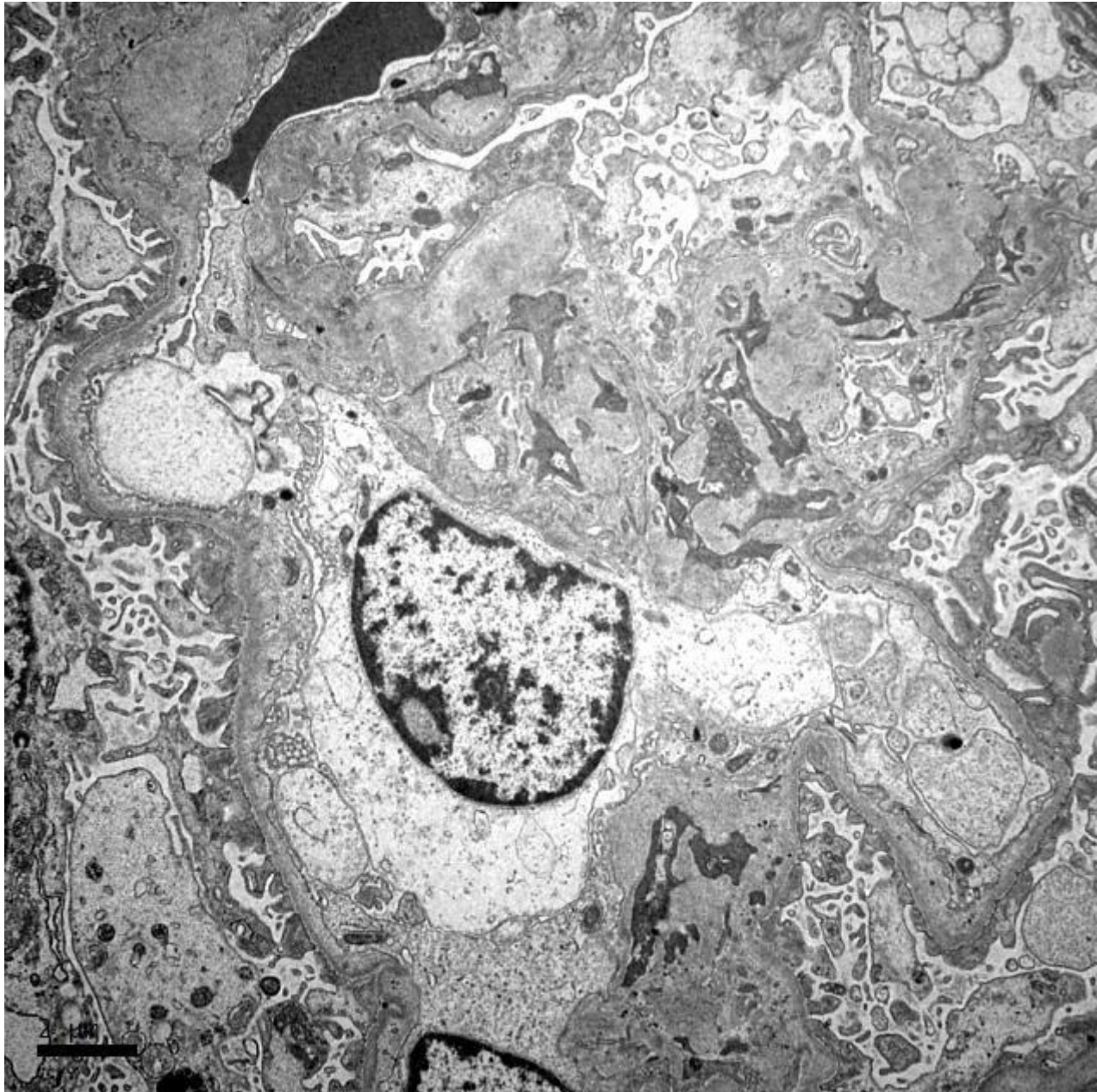
IgM

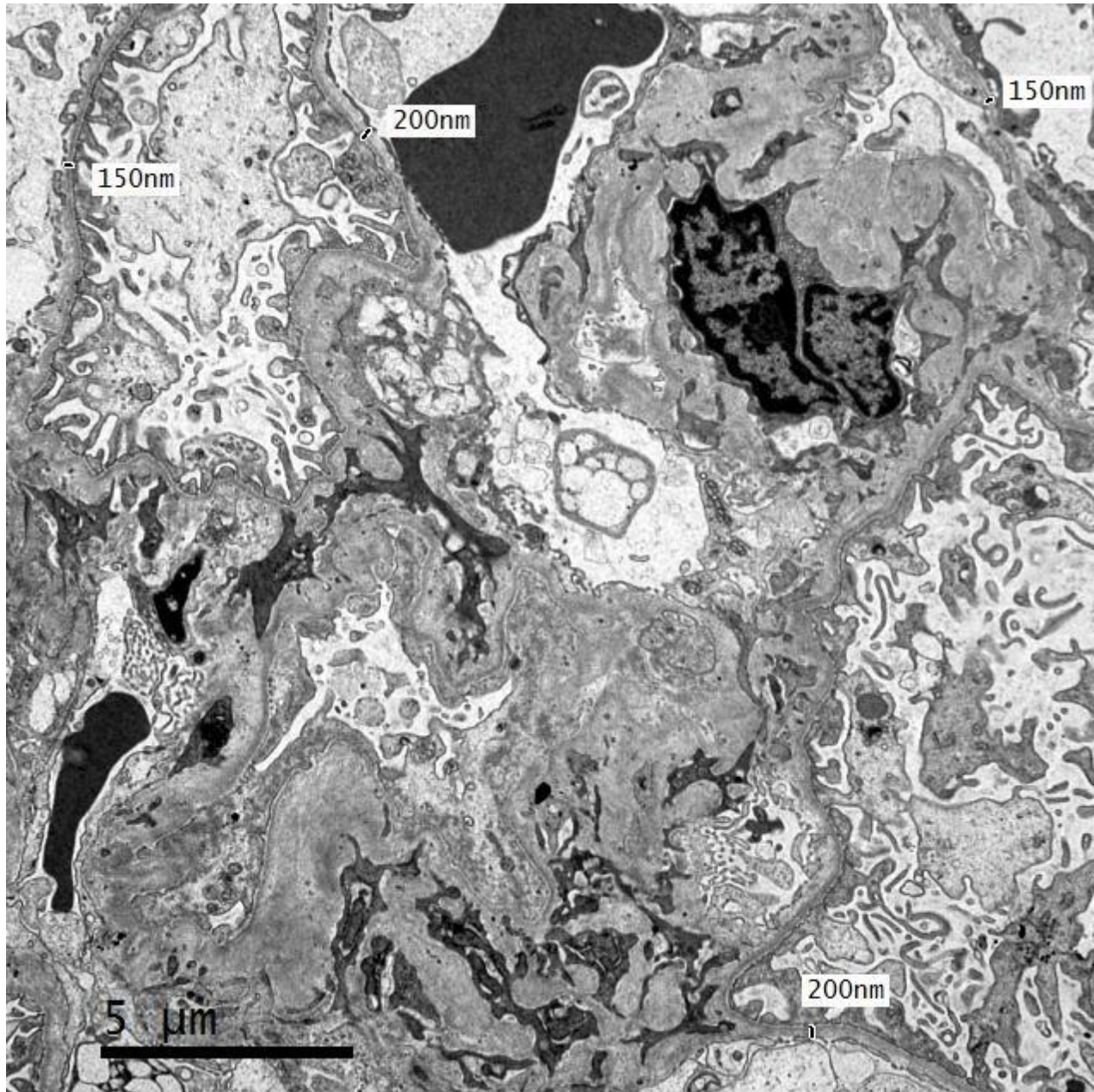


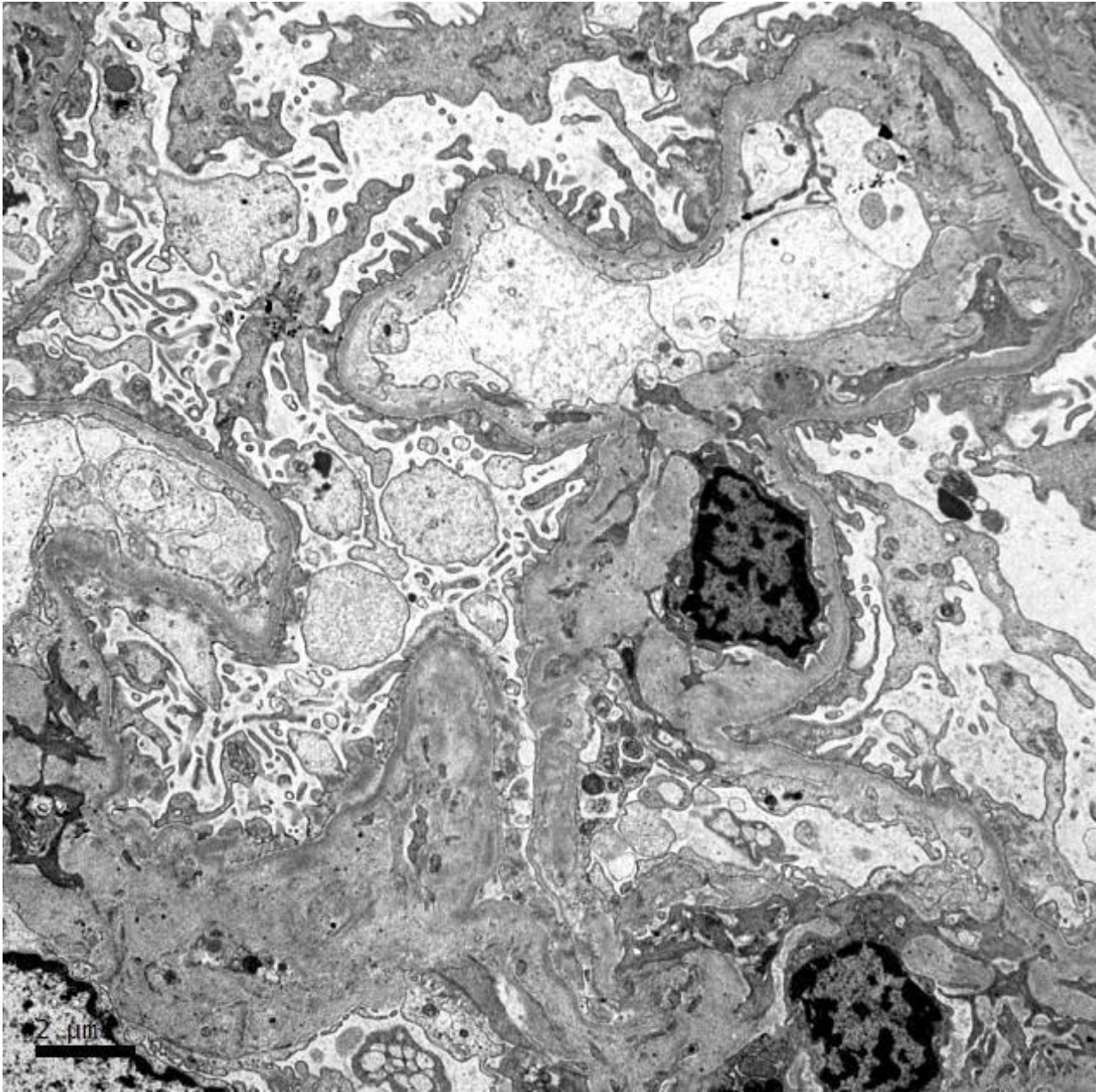
C3













RENAL BIOPSY CLINICOPATHOLOGICAL WORKSHOP 2018



PATHOLOGY



Division of Pathology
Singapore General Hospital



Department of Renal Medicine
Singapore General Hospital



MEDICINE