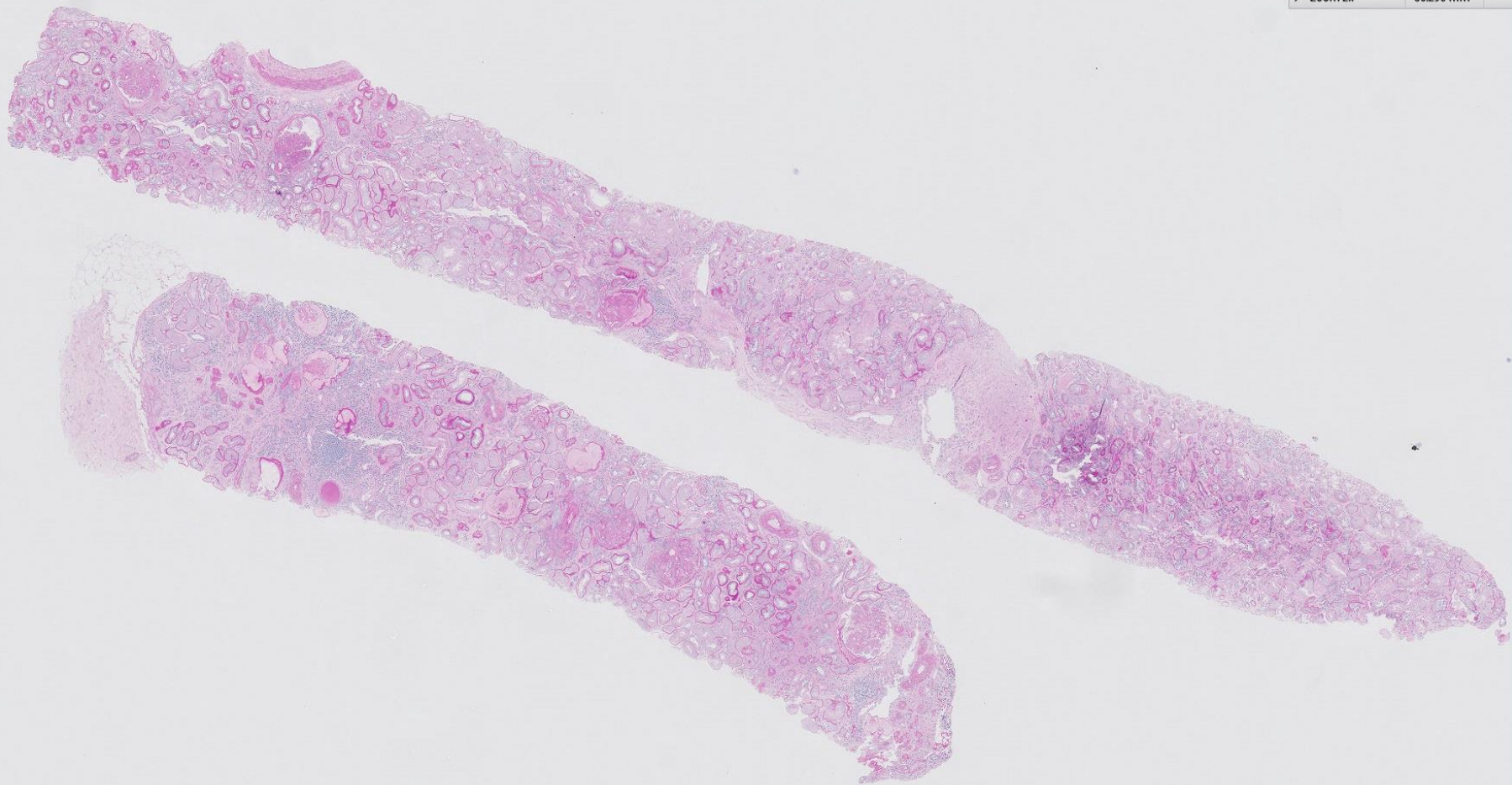
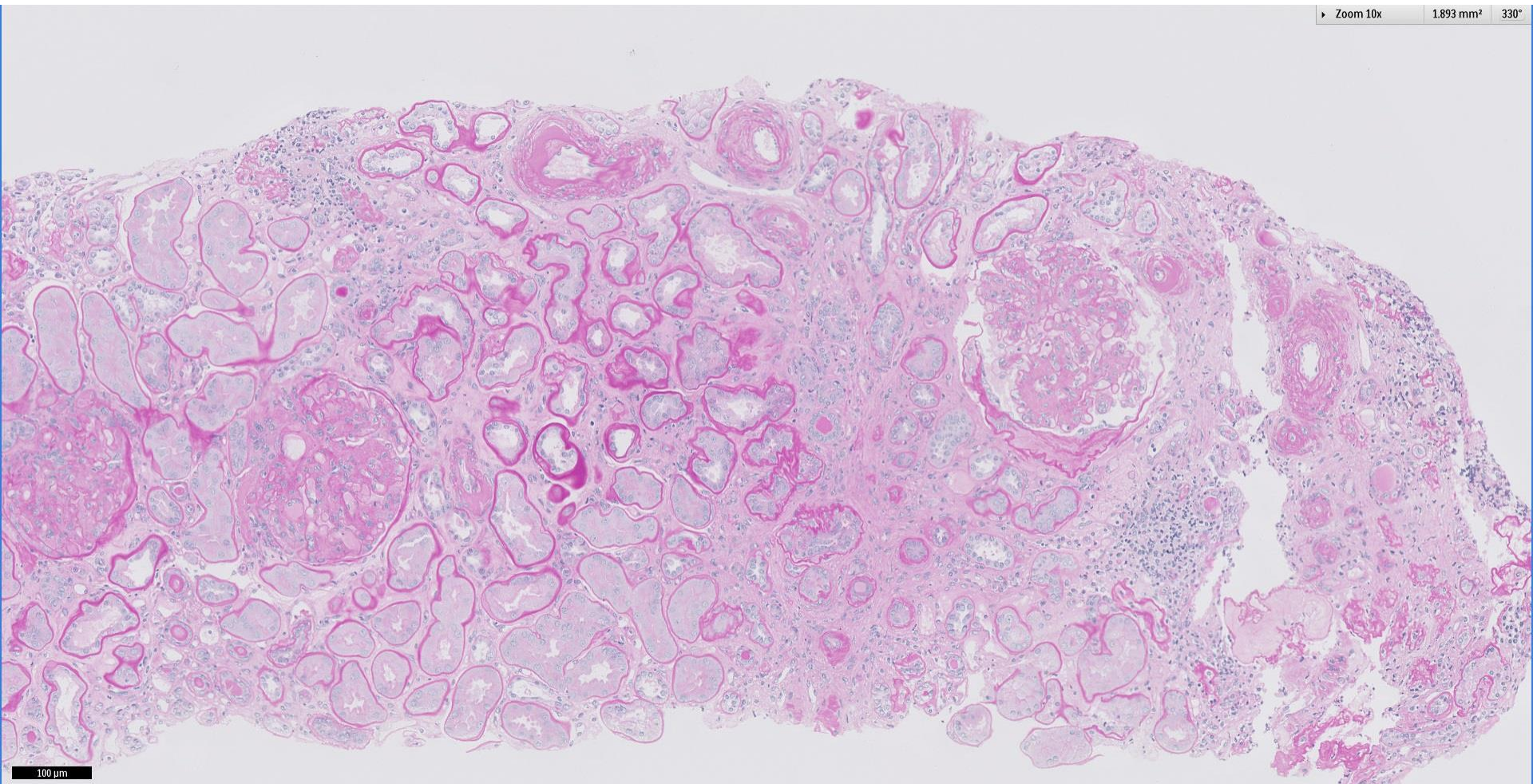


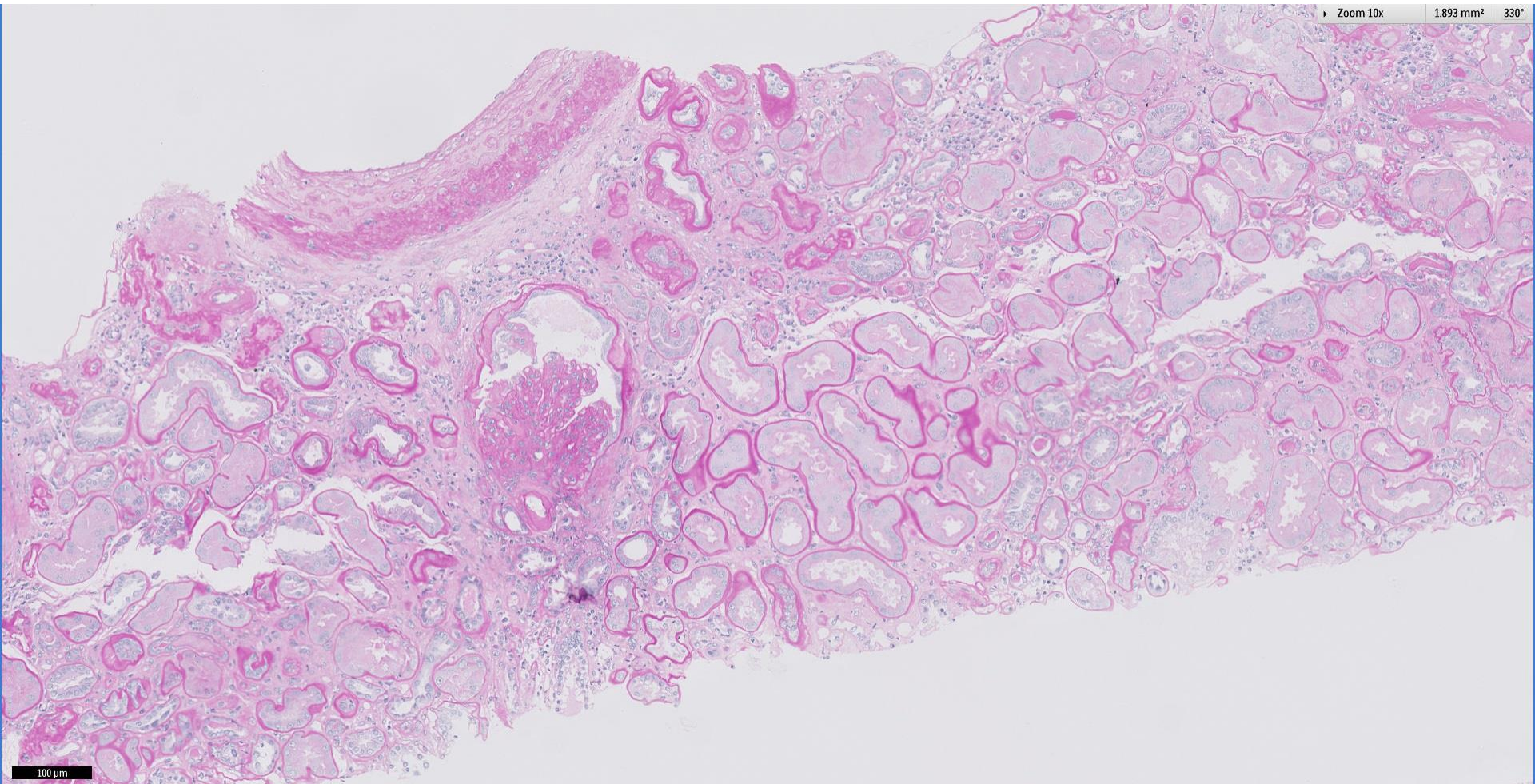
## *Case 62*

54 year old male with diabetes and hypertension on HAART therapy presented with nephrotic range proteinuria and acute kidney injury.





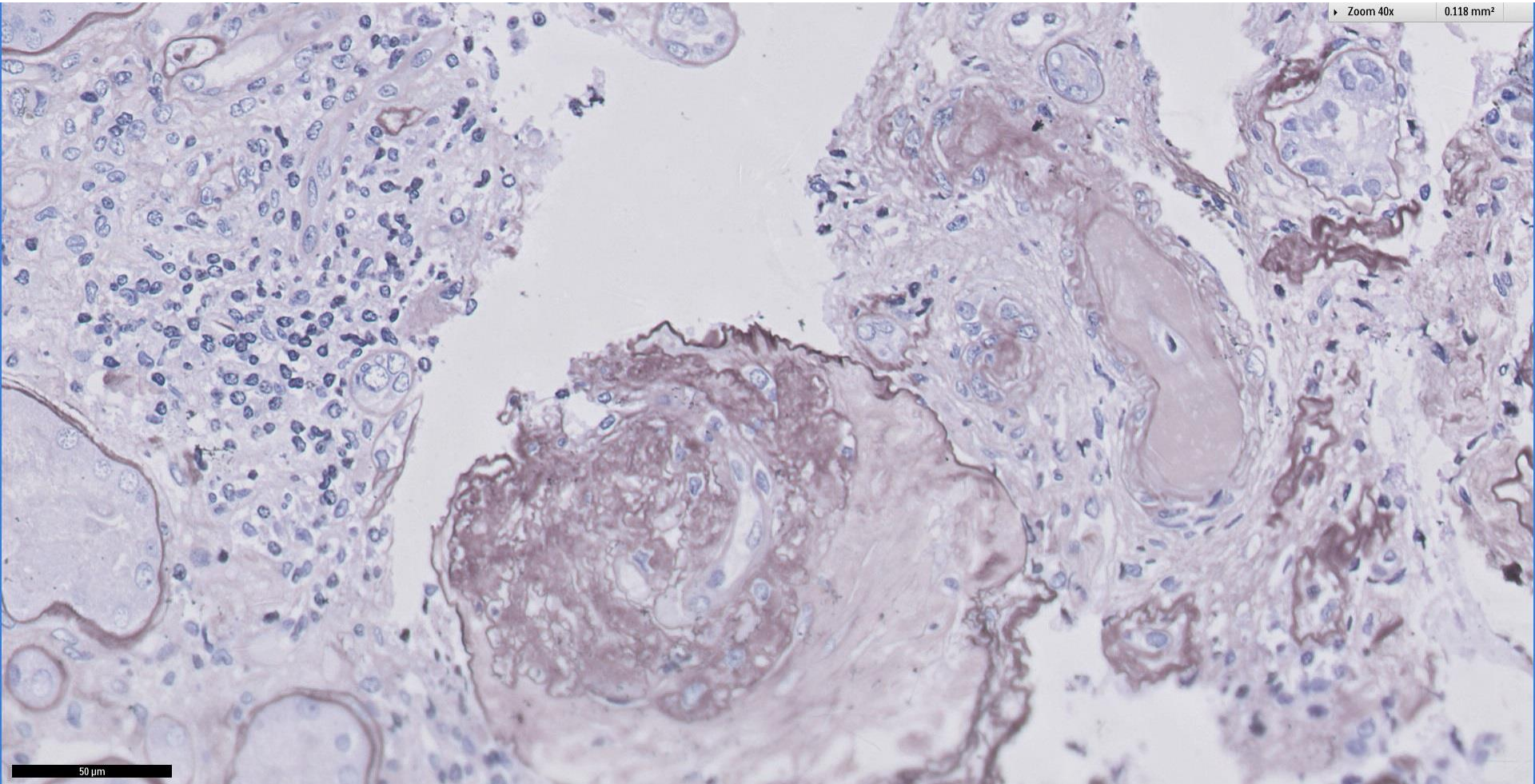
100  $\mu$ m



100  $\mu$ m

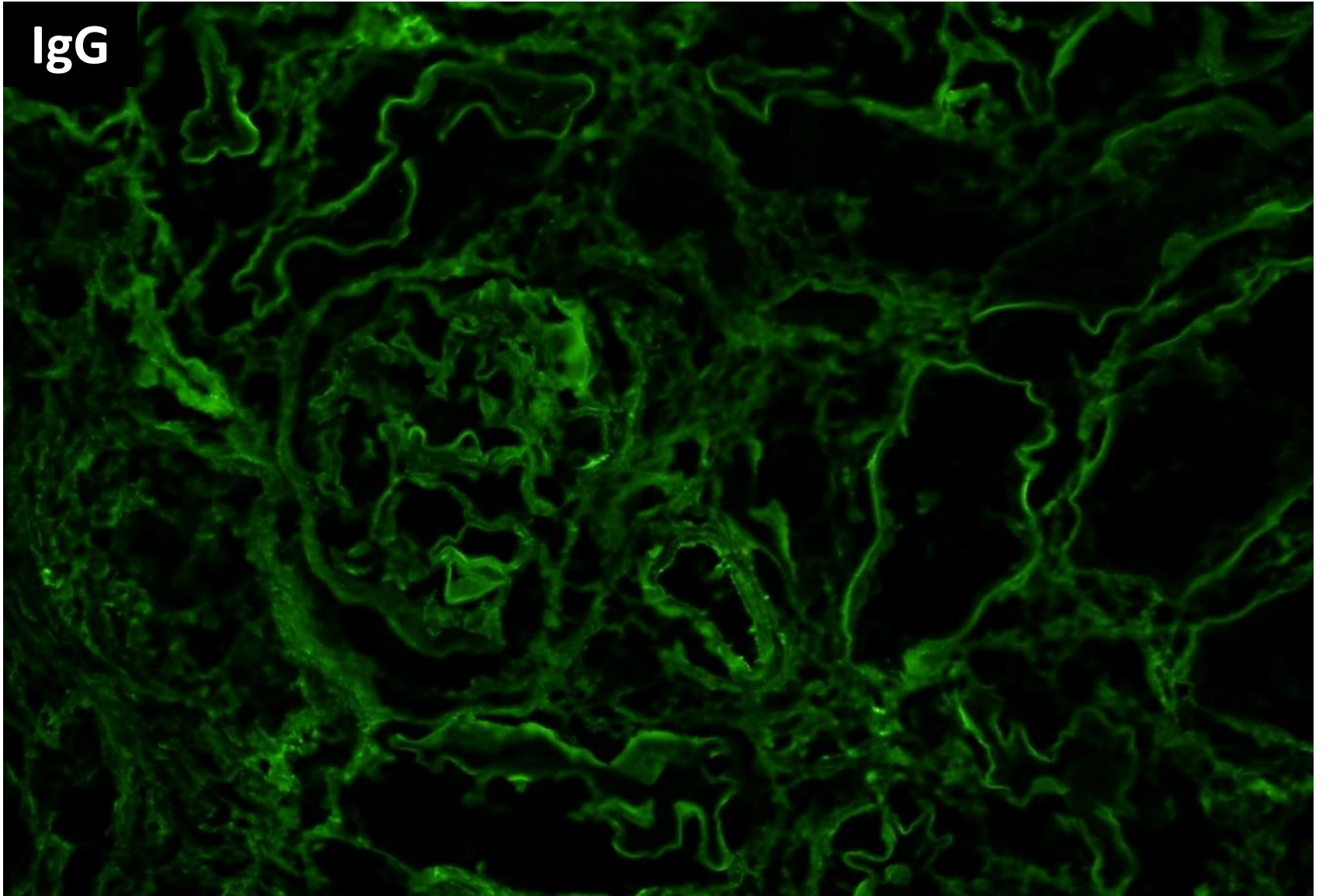
Zoom 40x

0.118 mm<sup>2</sup>

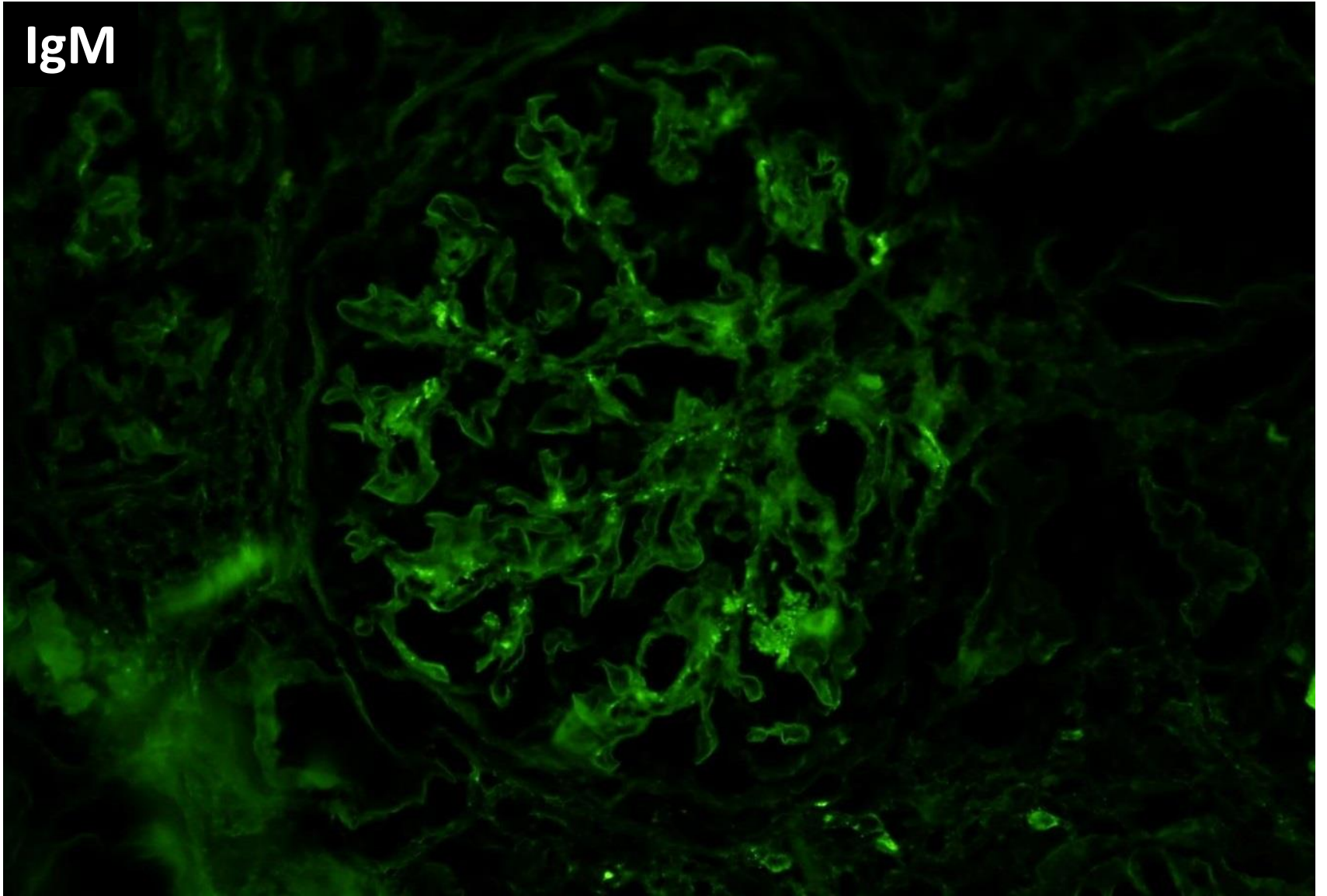


50  $\mu$ m

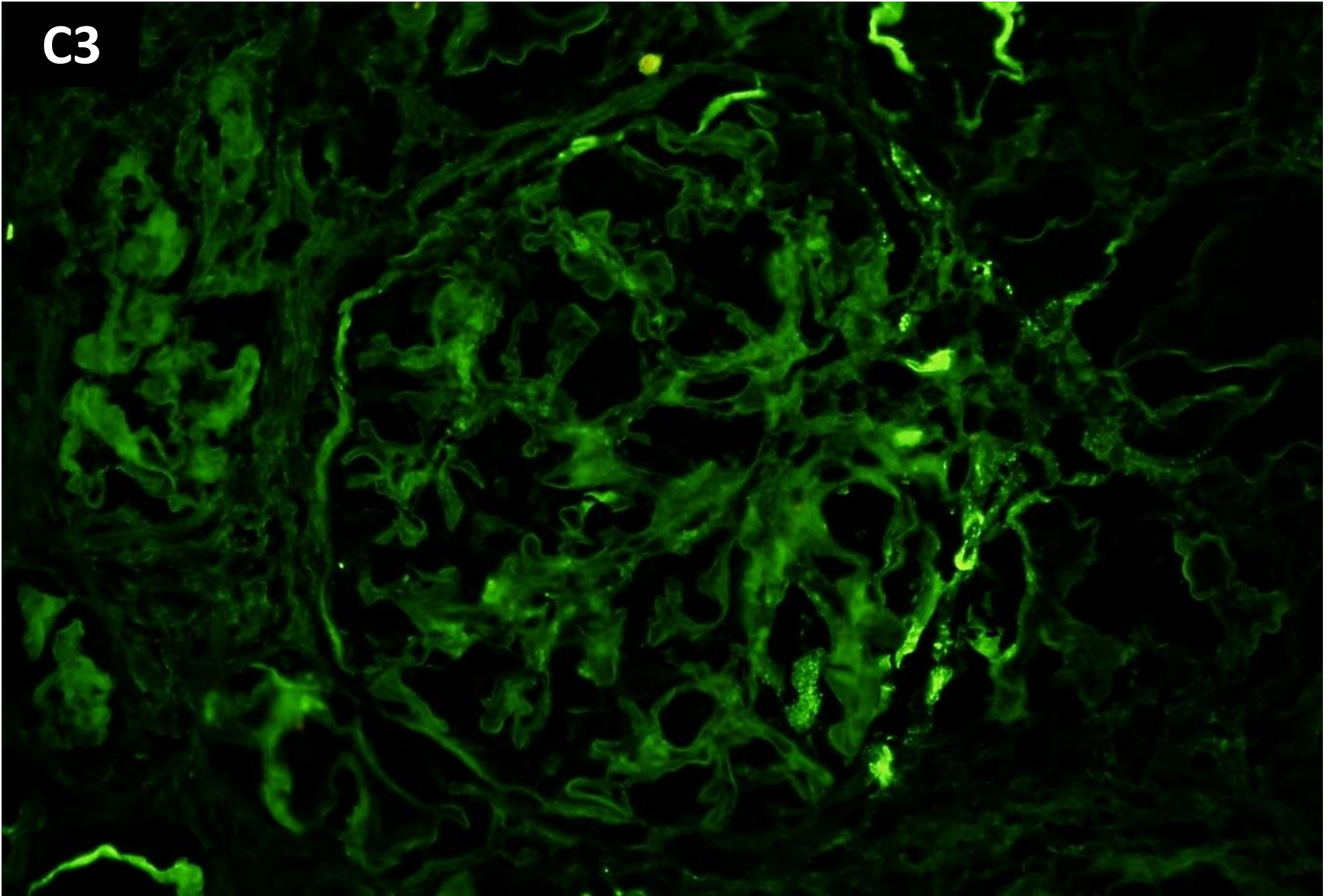
IgG



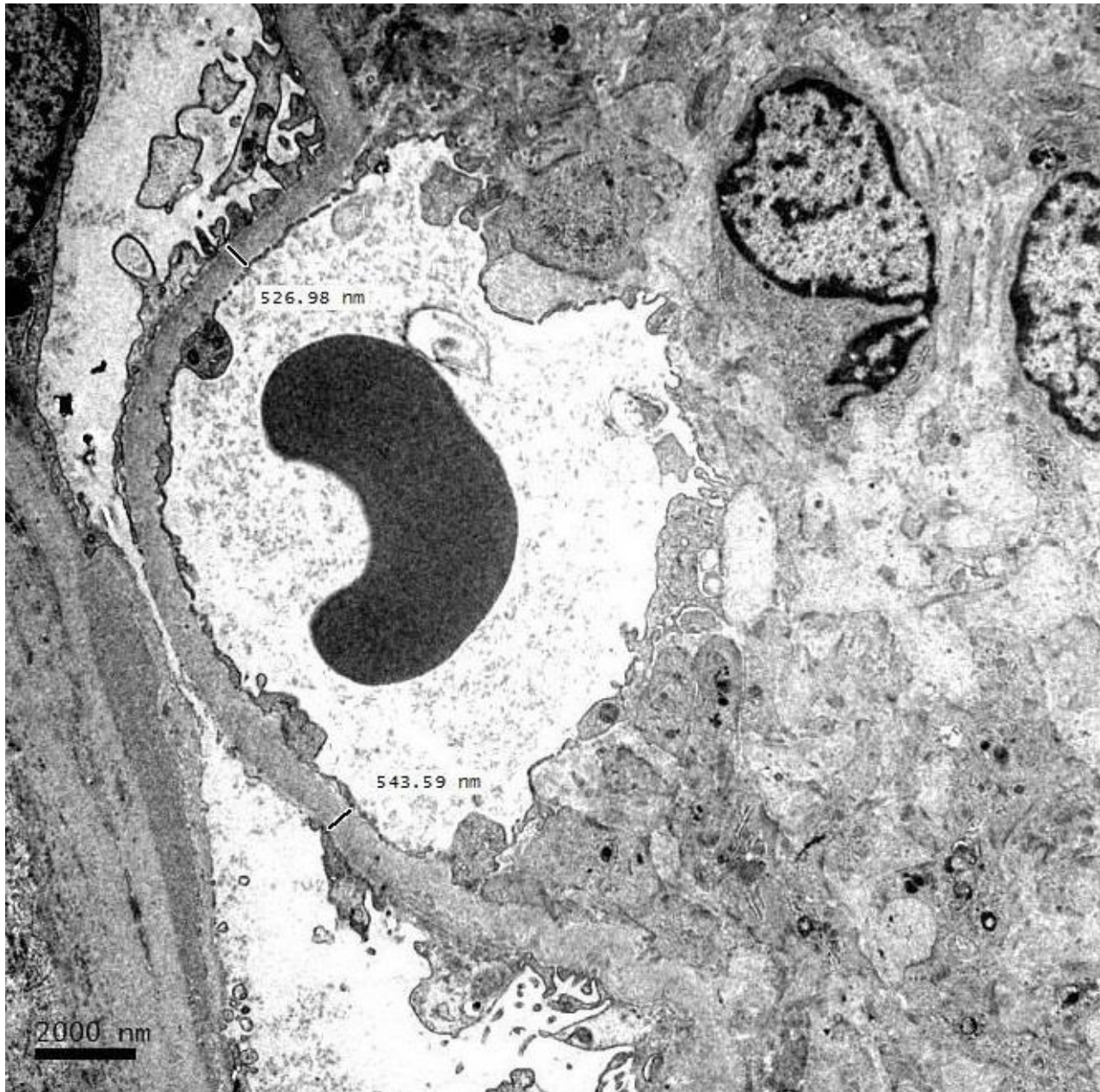
IgM

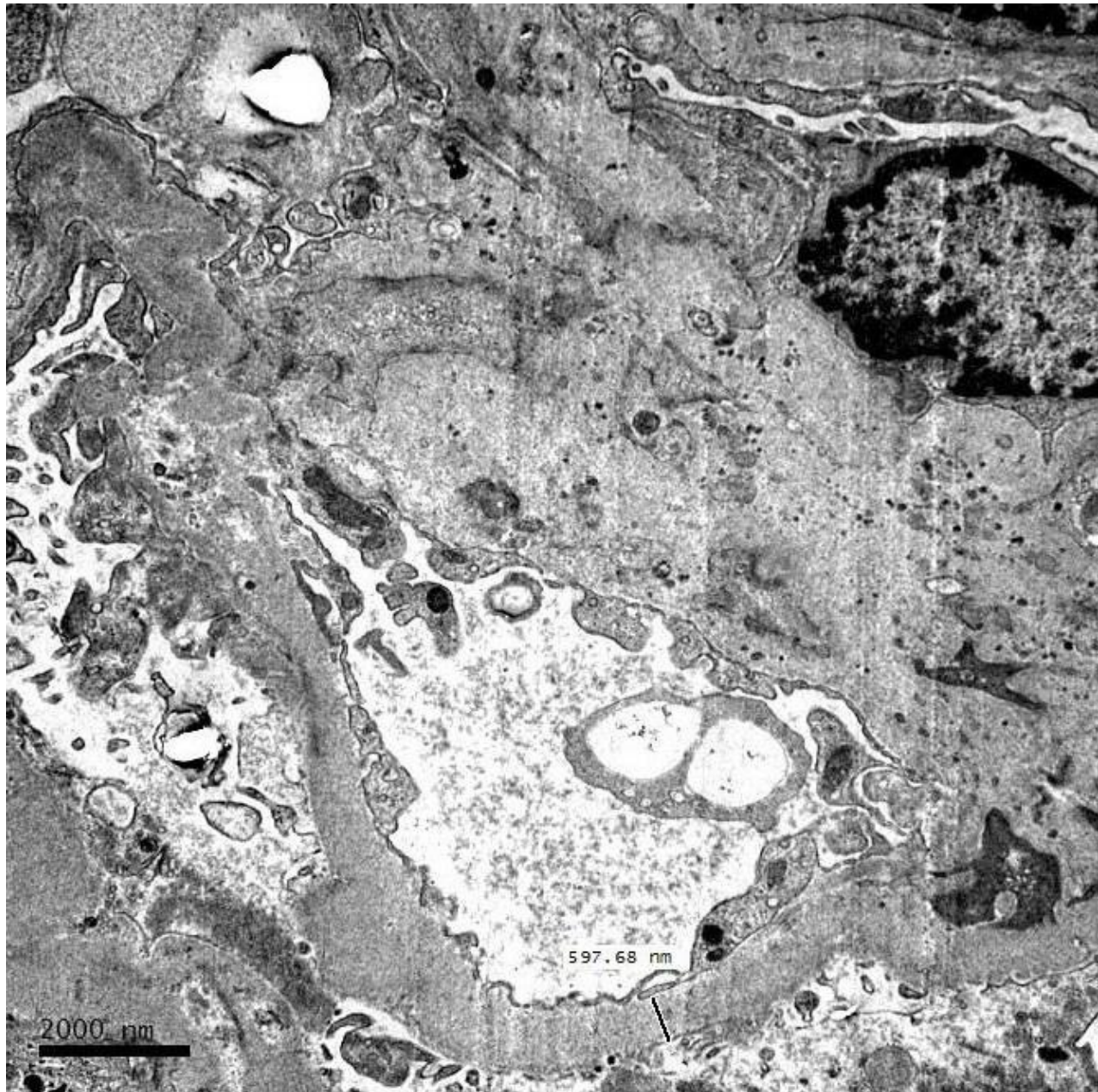


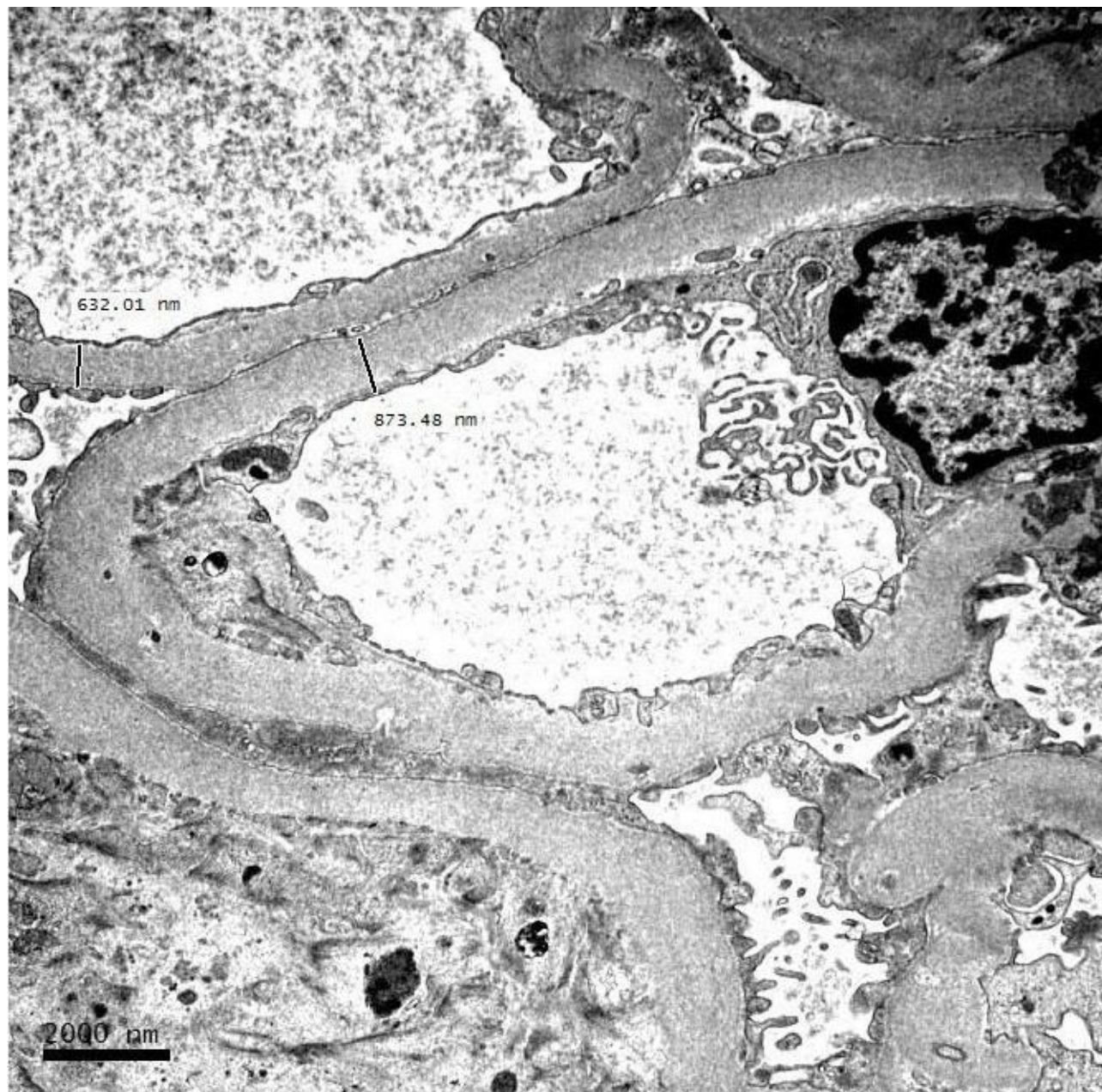
C3

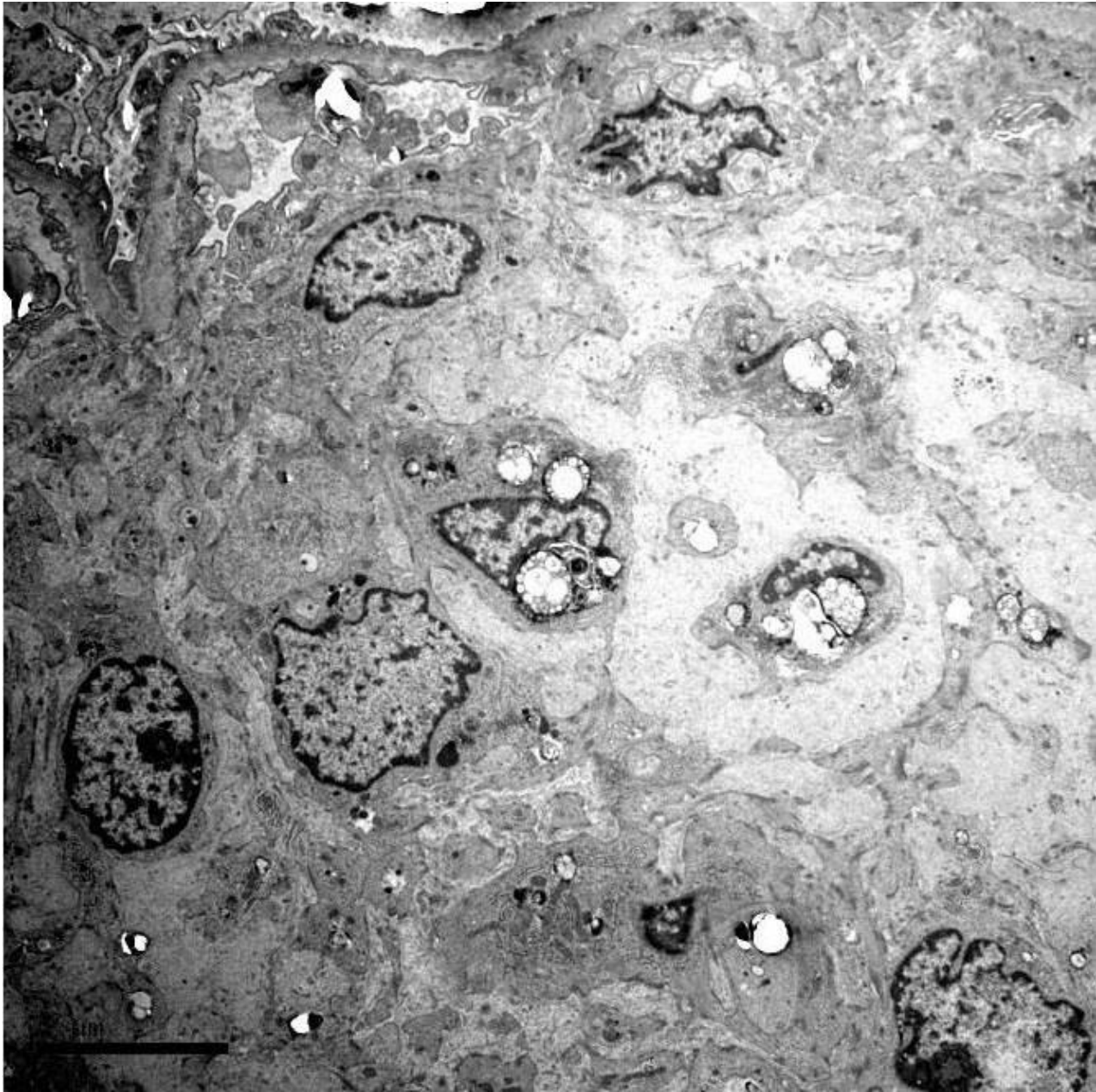














# RENAL BIOPSY CLINICOPATHOLOGICAL WORKSHOP 2018



**PATHOLOGY**



Division of Pathology  
Singapore General Hospital



Department of Renal Medicine  
Singapore General Hospital



**MEDICINE**