

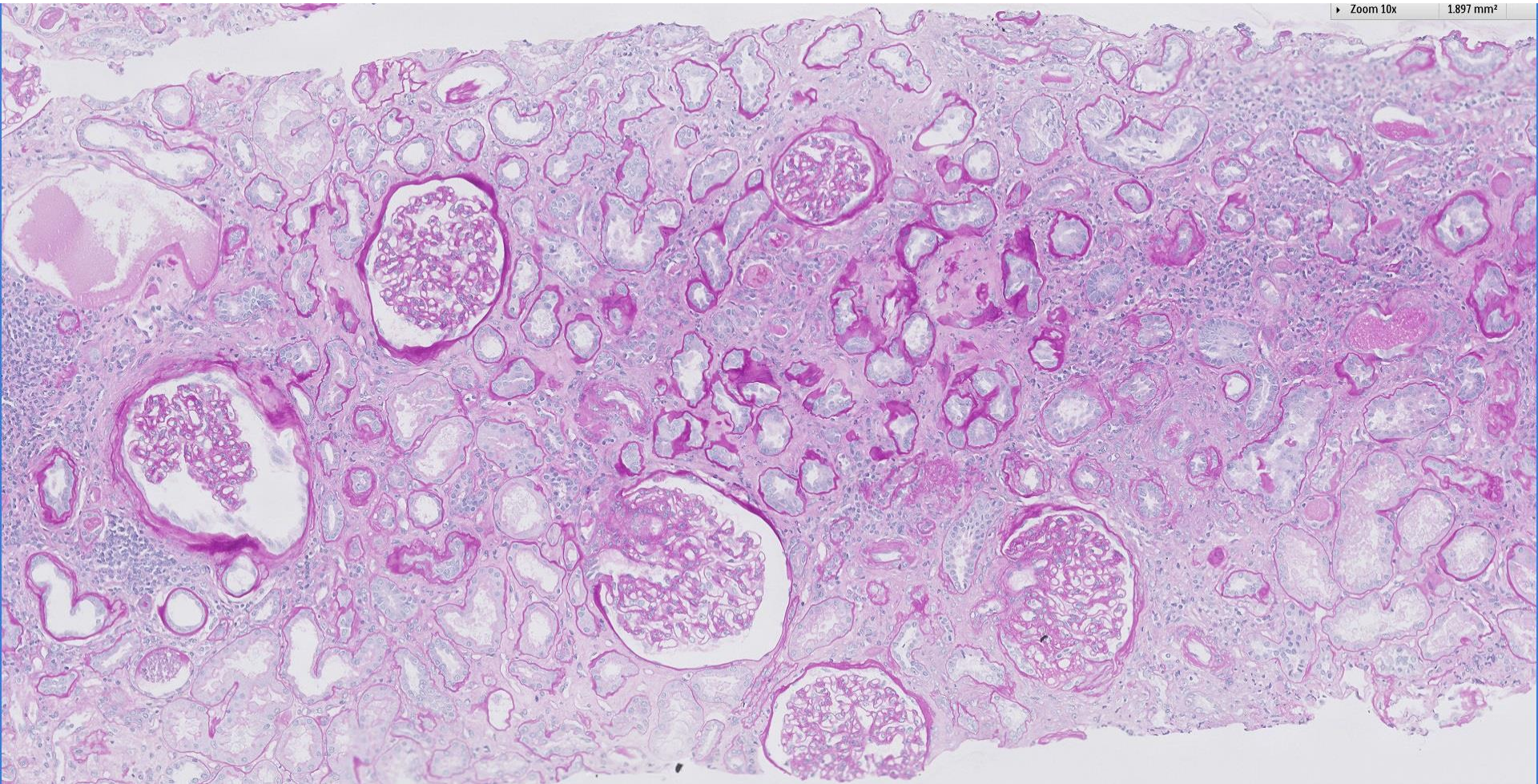
Case 61

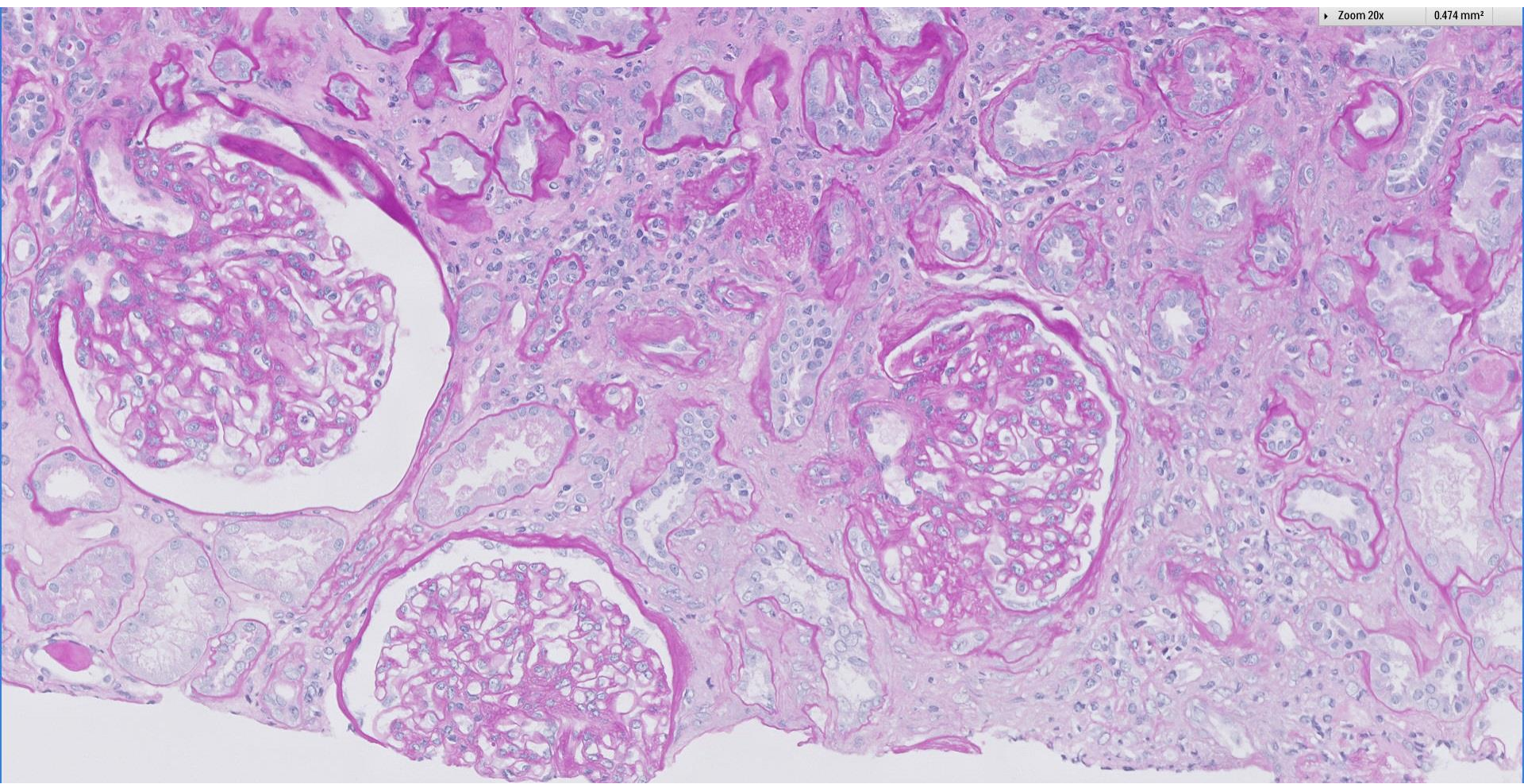
68 year old Chinese lady with history of diabetes and HTN.
Presented with worsening renal function and nephrotic
range proteinuria.



► Zoom 10x

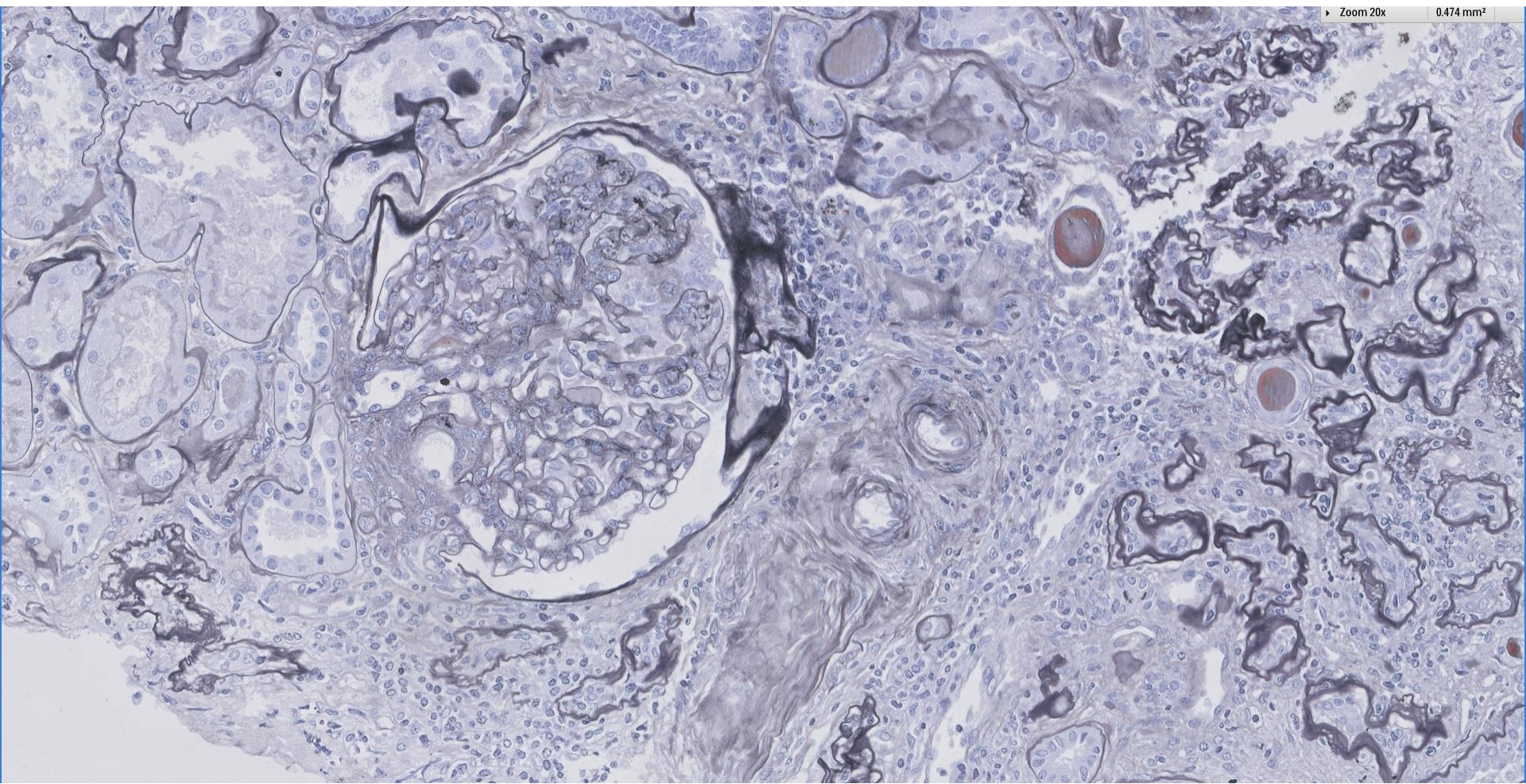
1.897 mm²



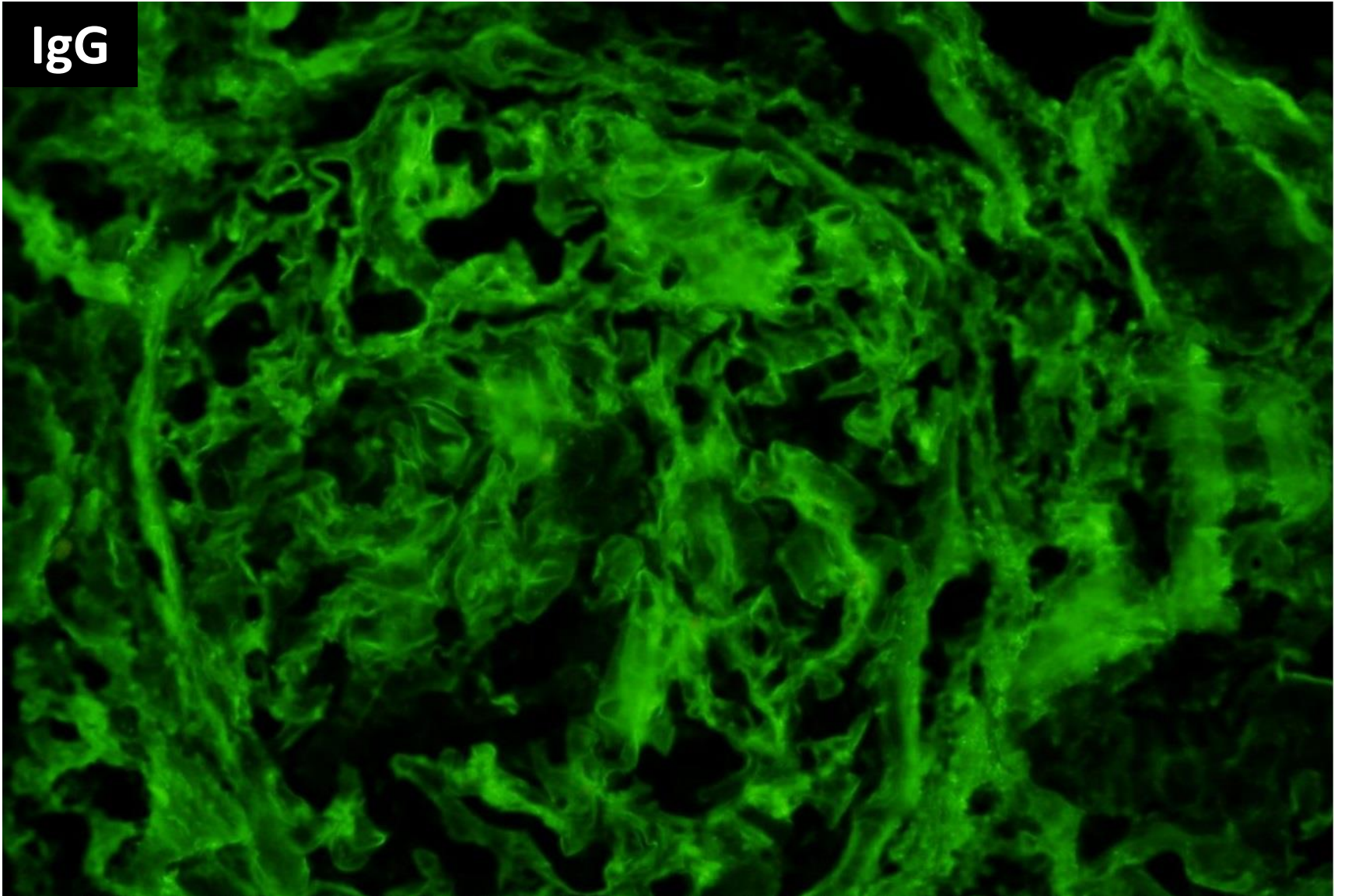


► Zoom 20x

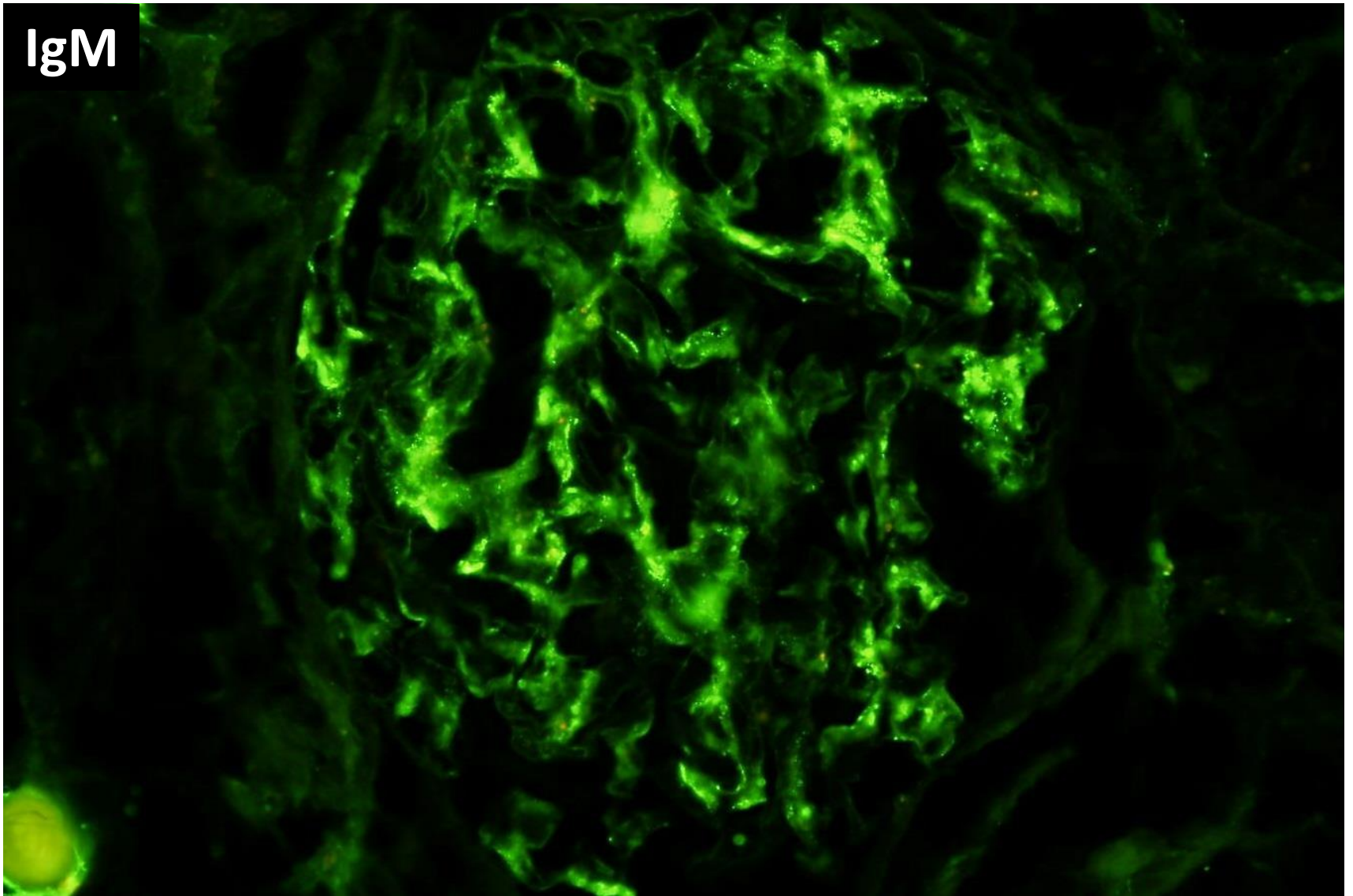
0.474 mm²



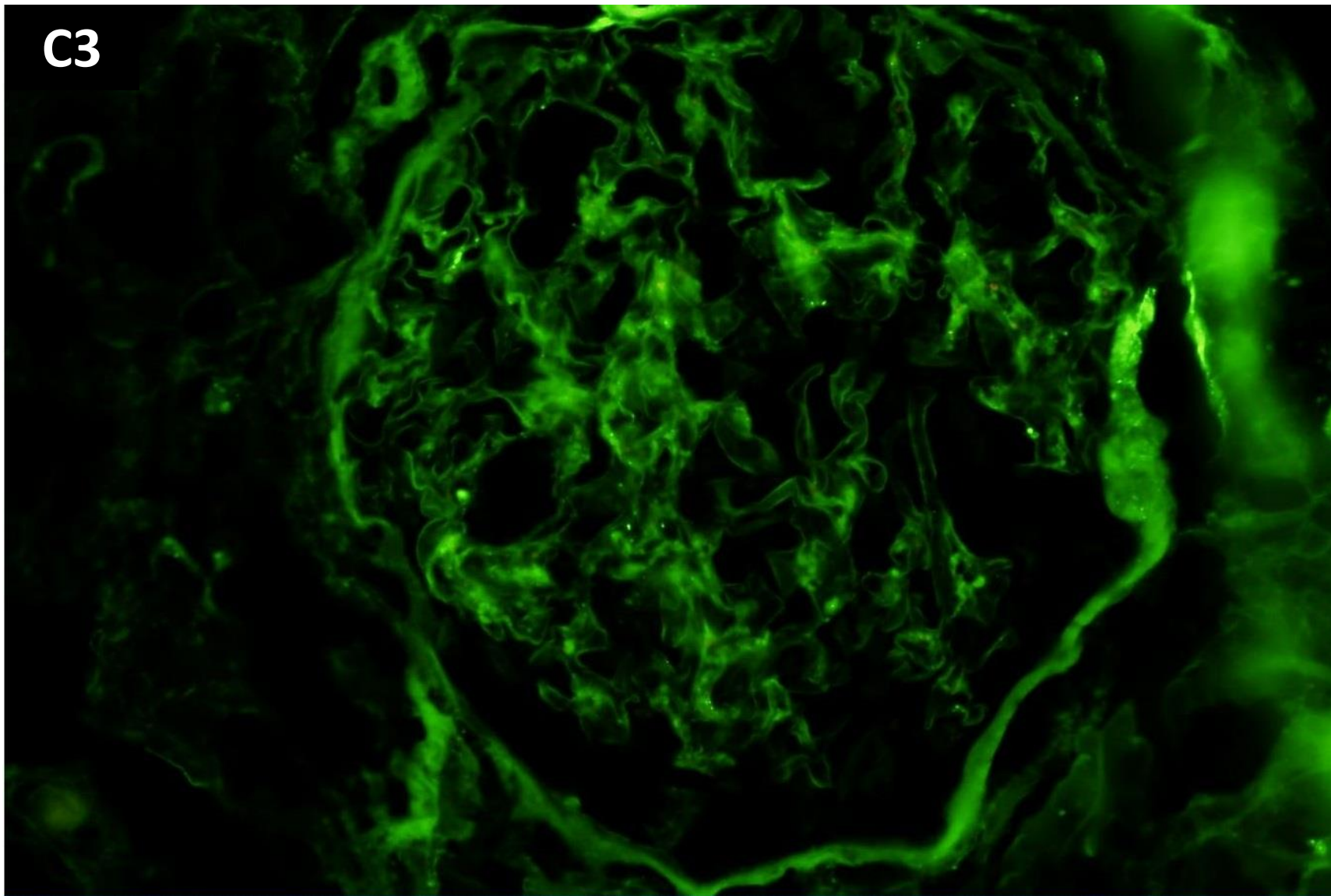
IgG

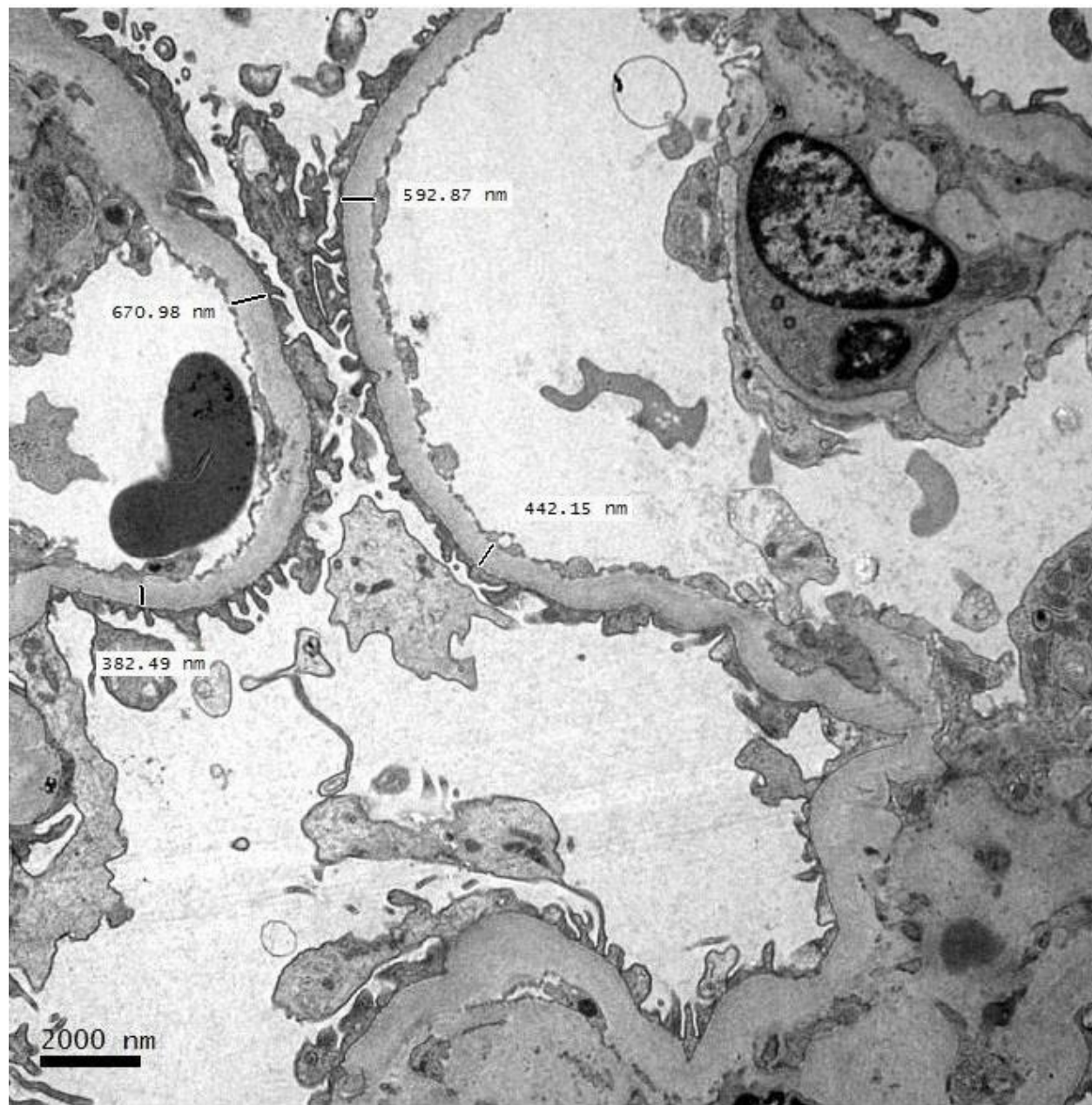


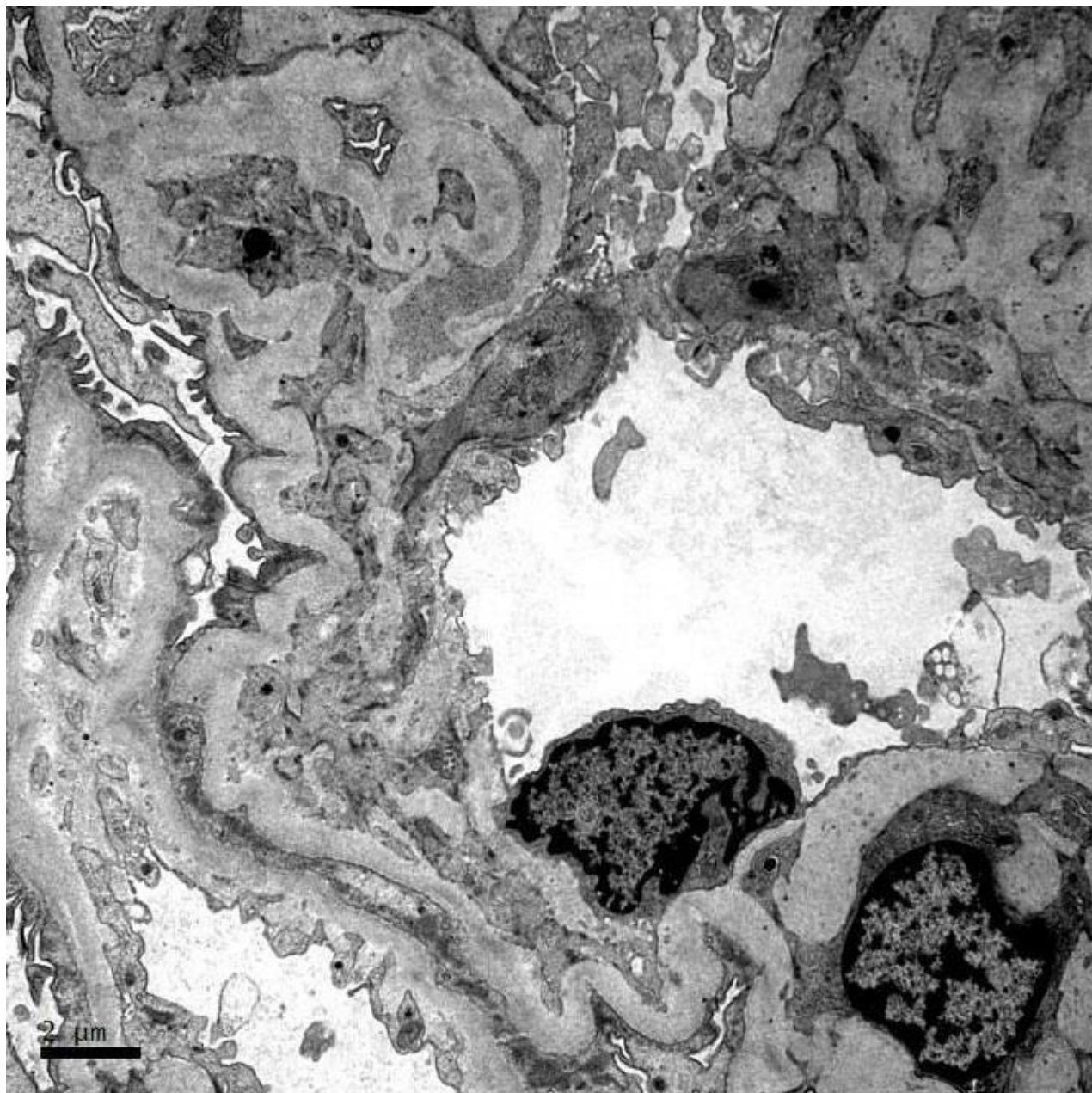
IgM

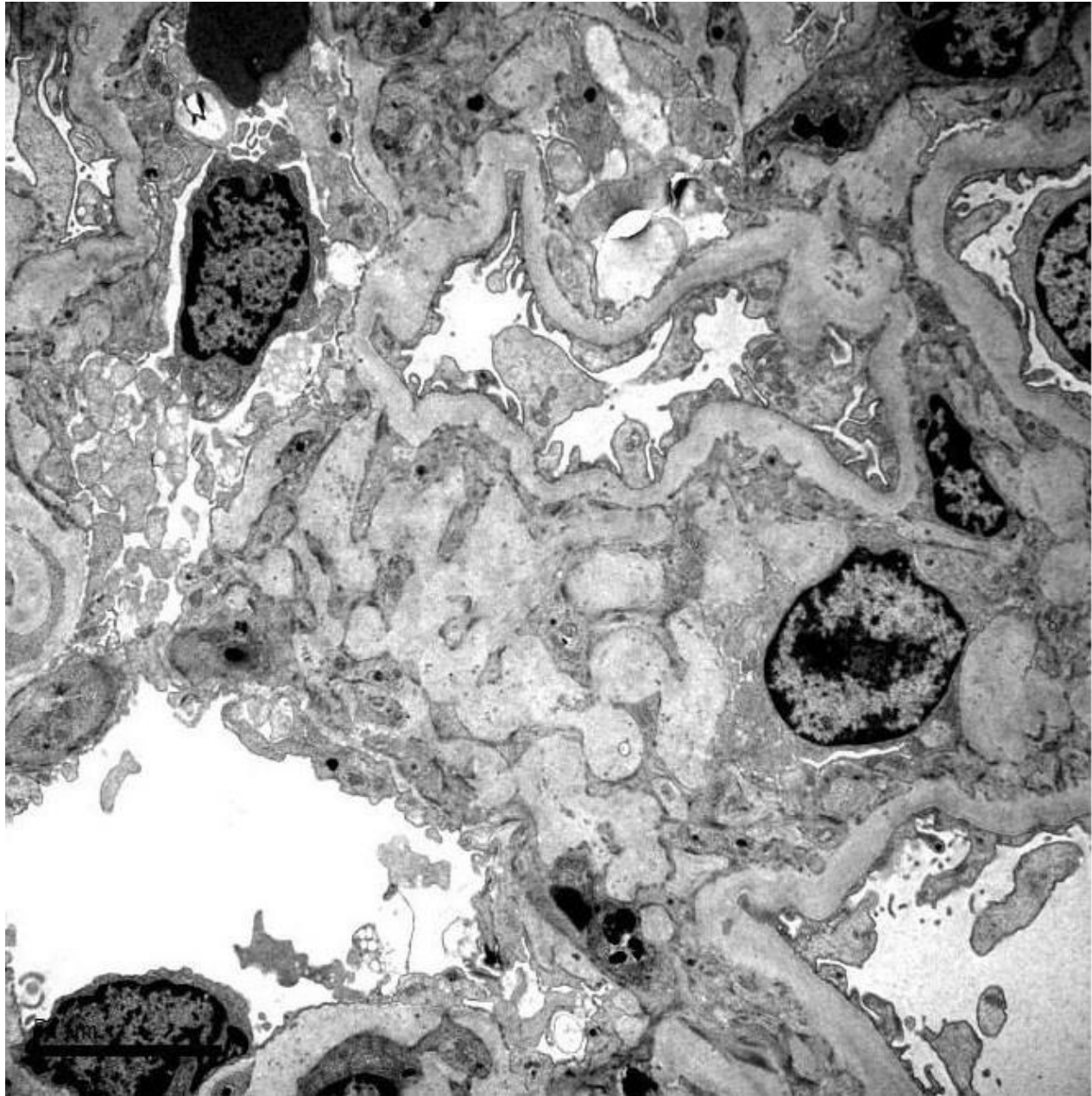


C3











RENAL BIOPSY CLINICOPATHOLOGICAL WORKSHOP 2018

