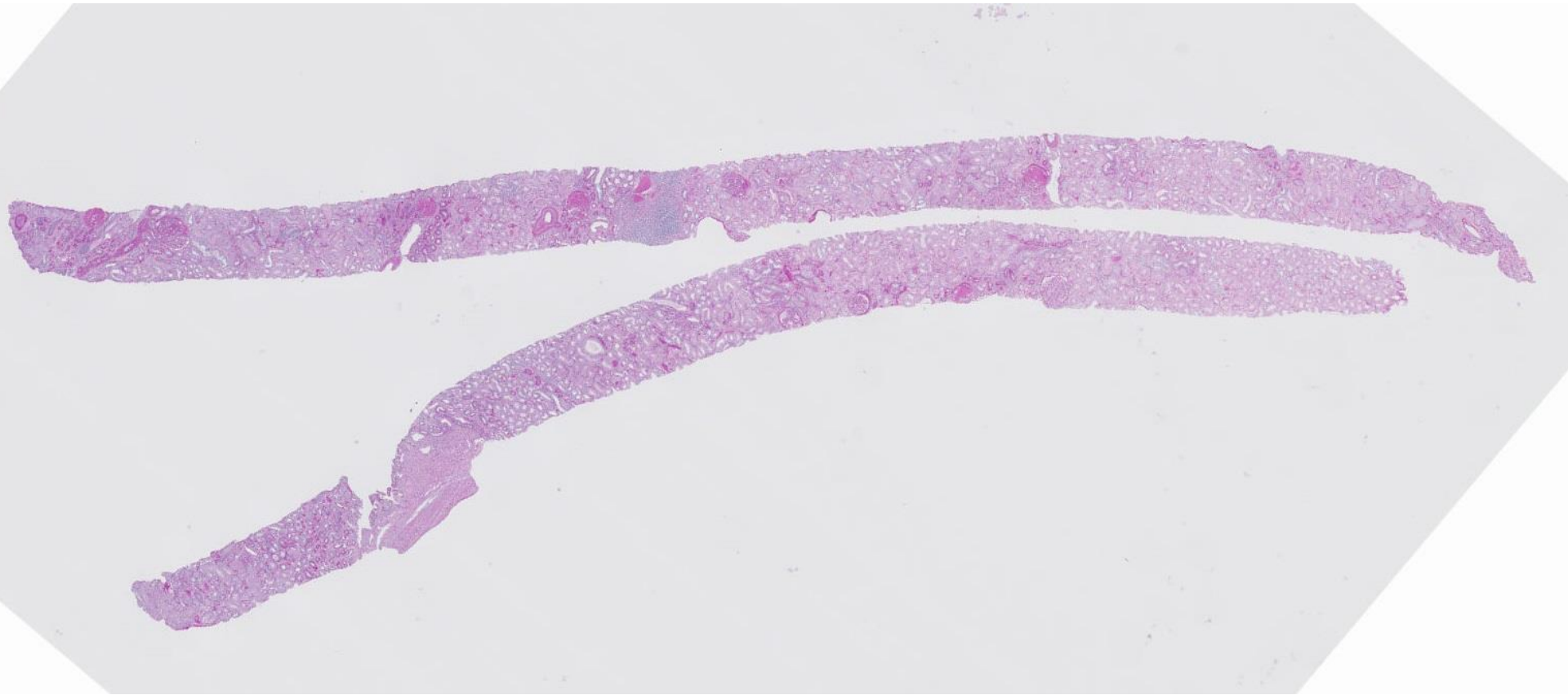
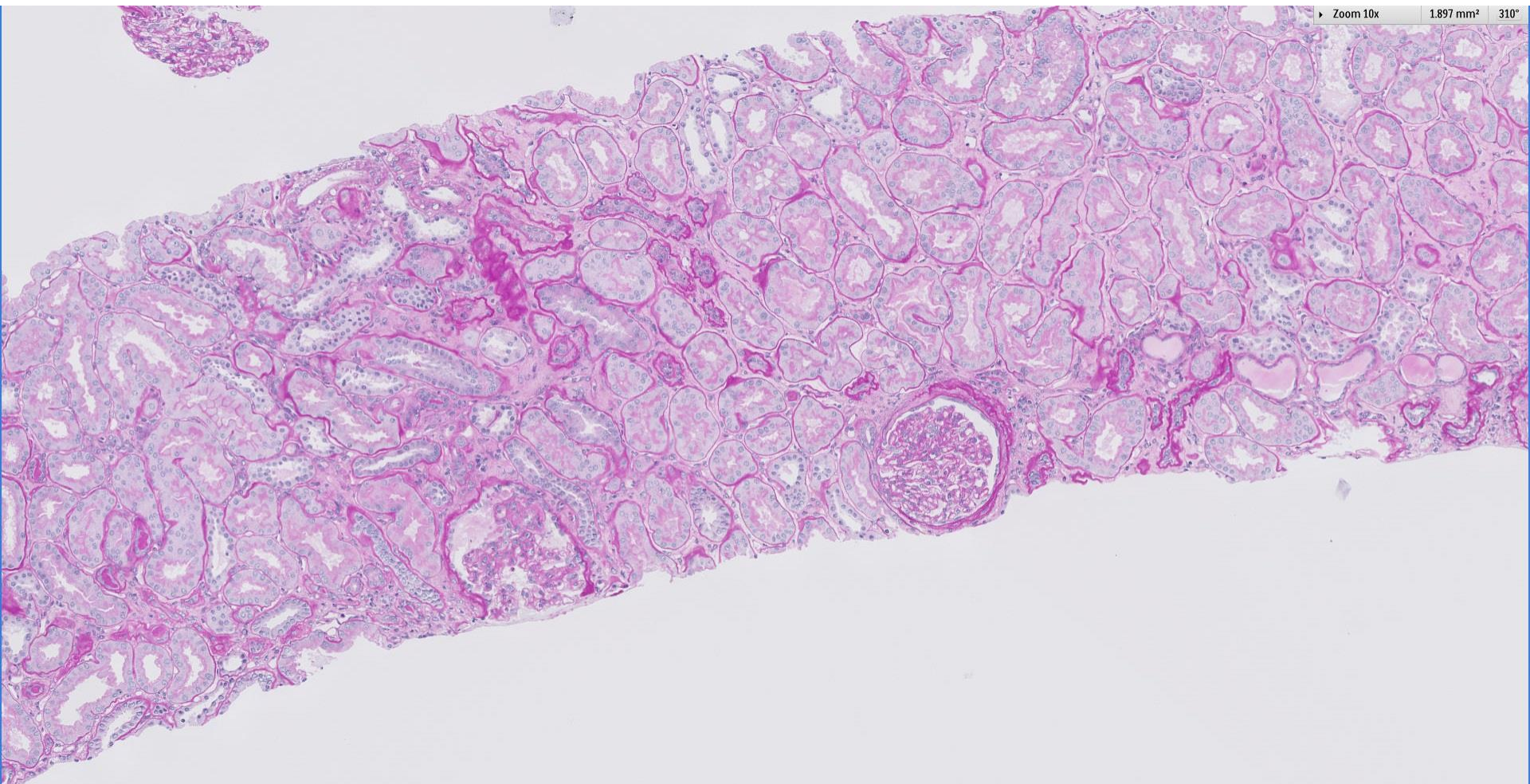
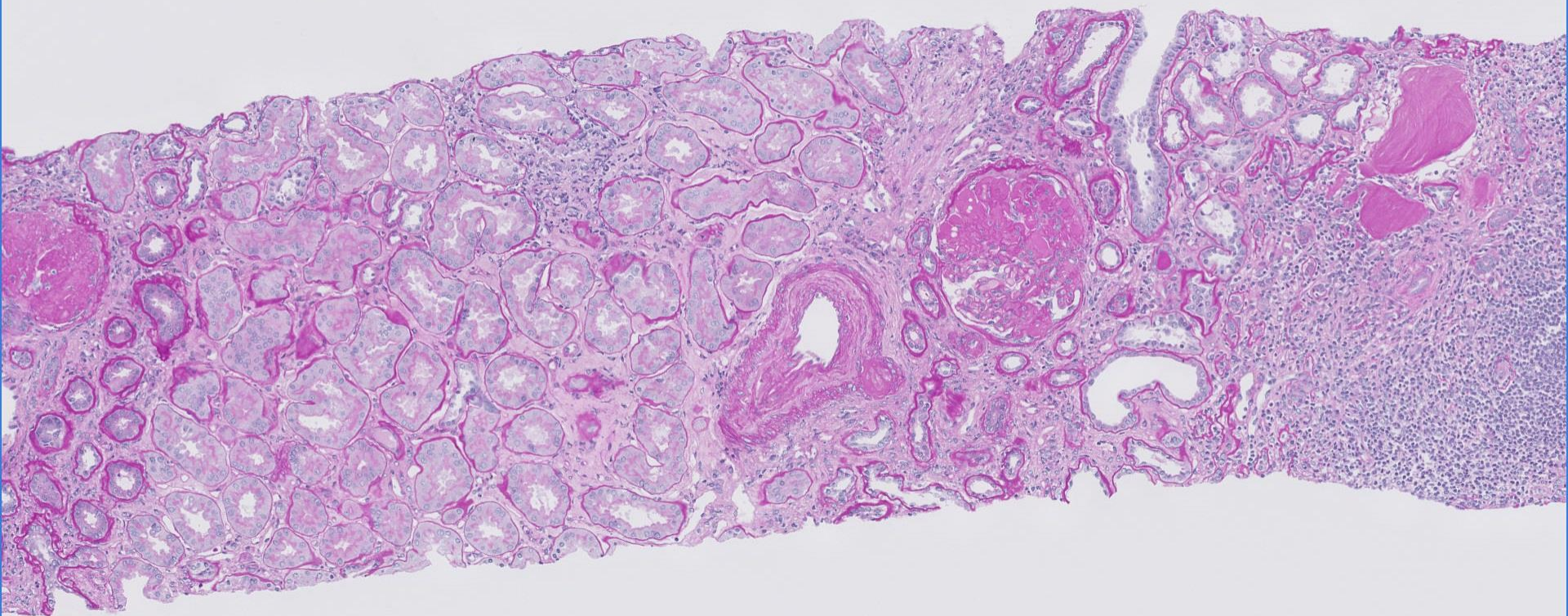


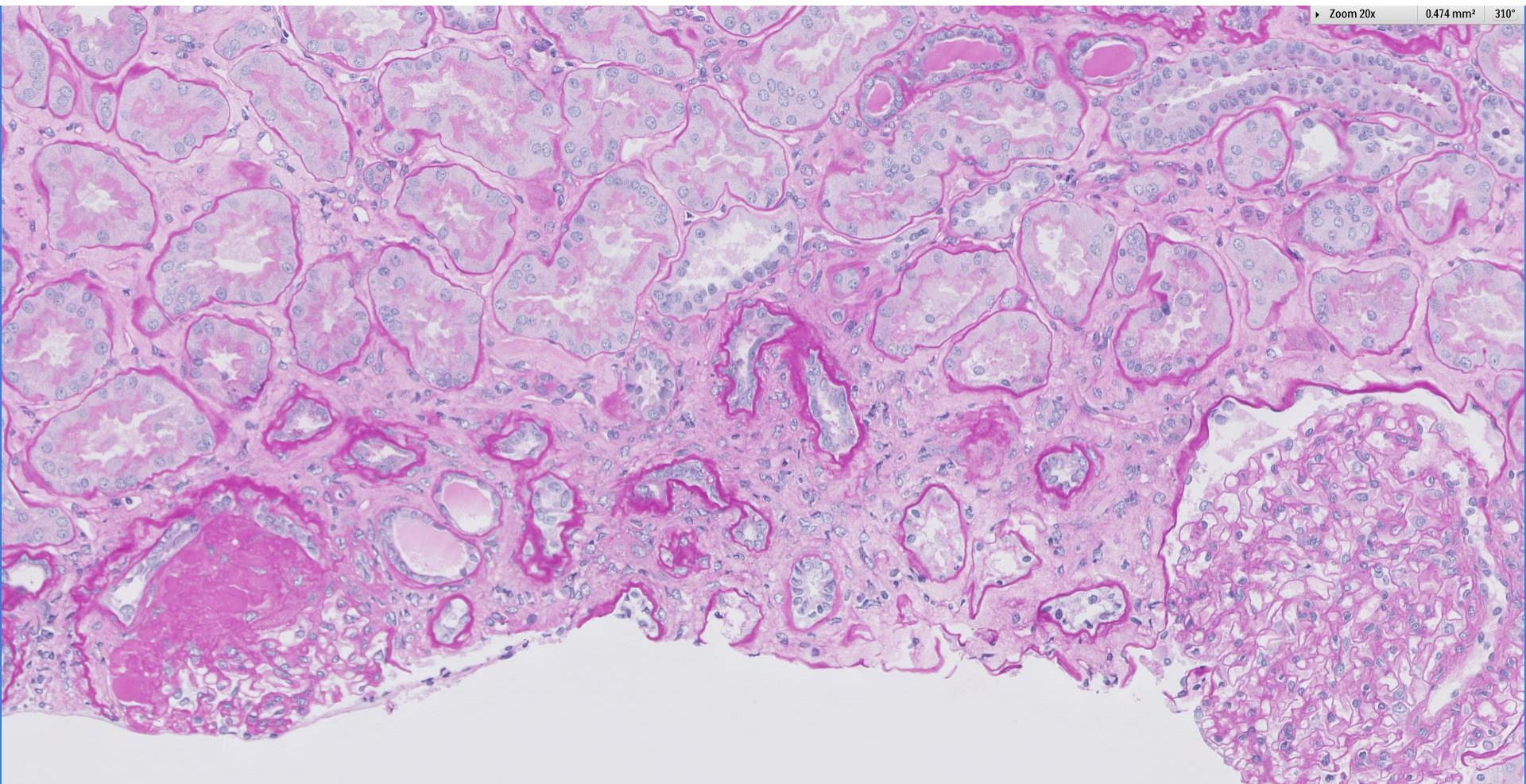
## *Case 59*

45 year old Chinese man with history of HTN. Presented with subnephrotic range proteinuria, microscopic haematuria and CKD 3.

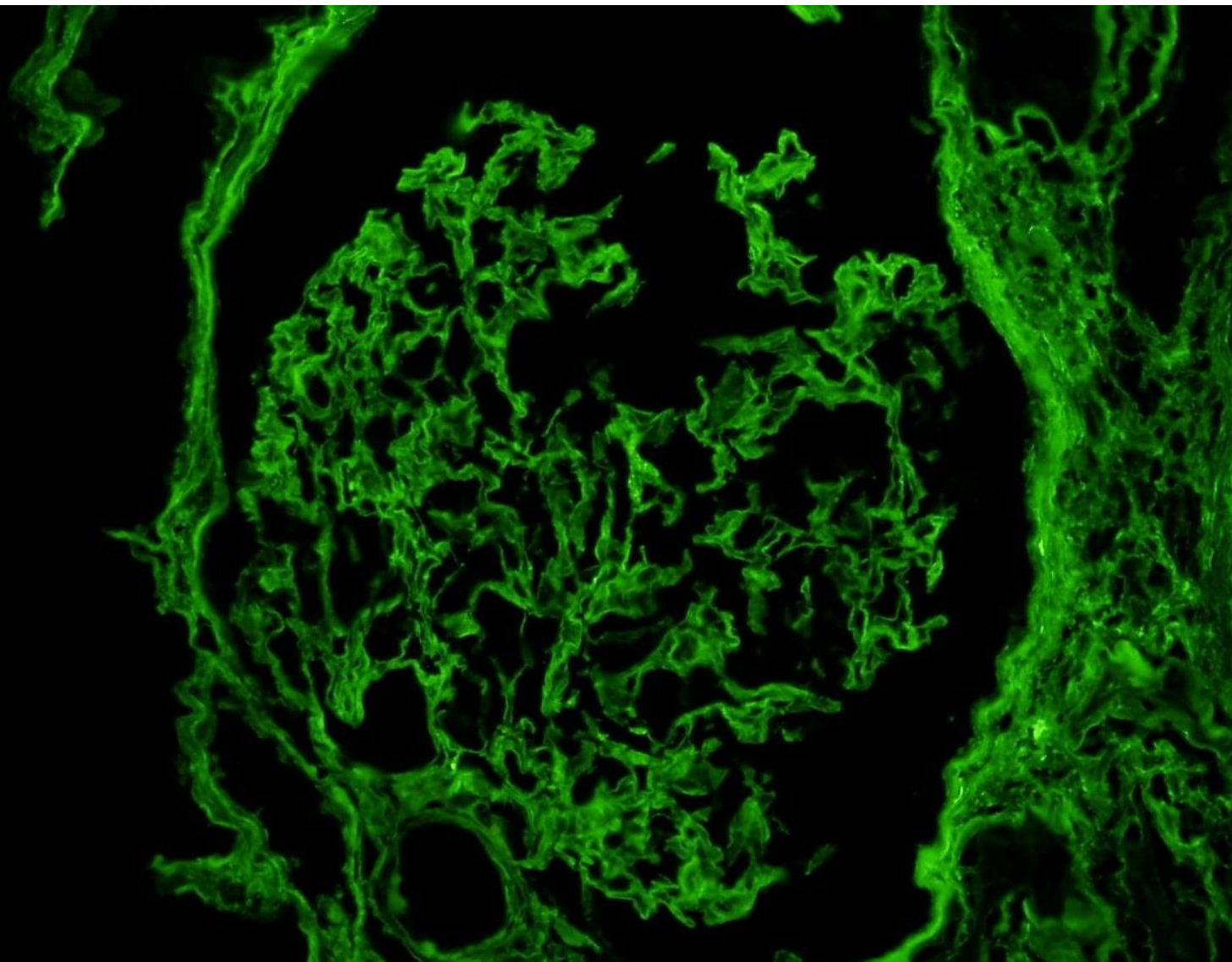




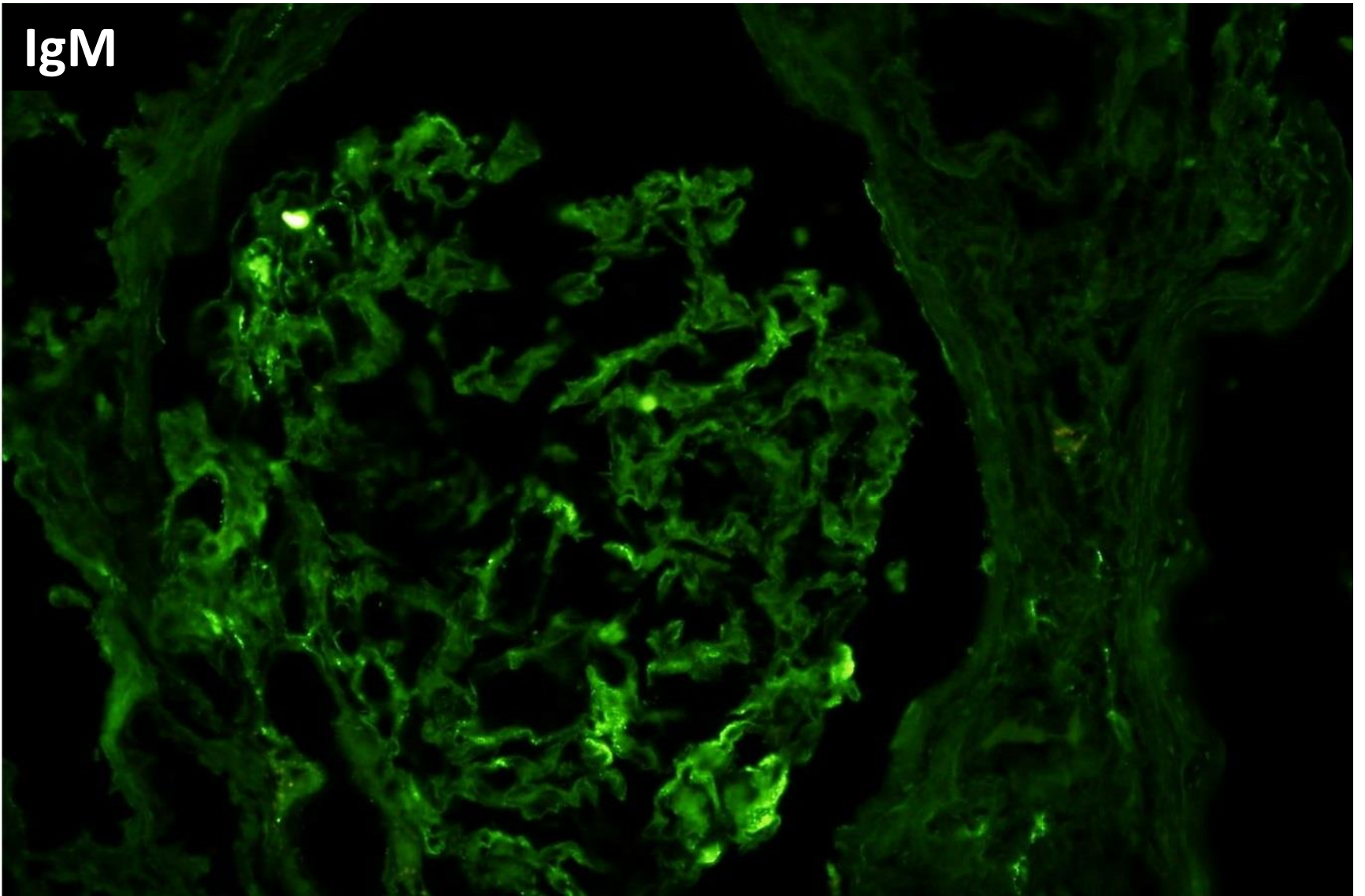




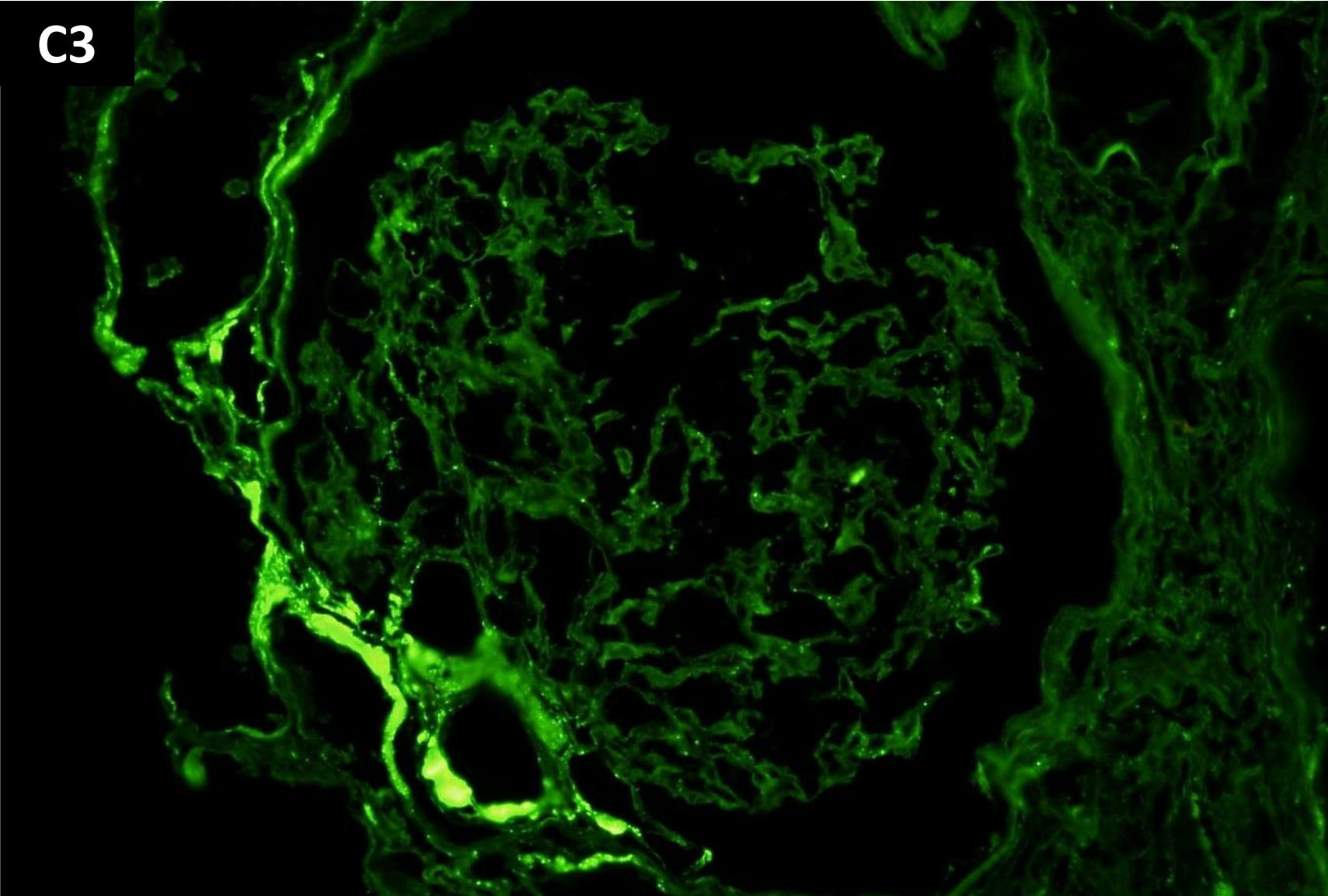
IgG



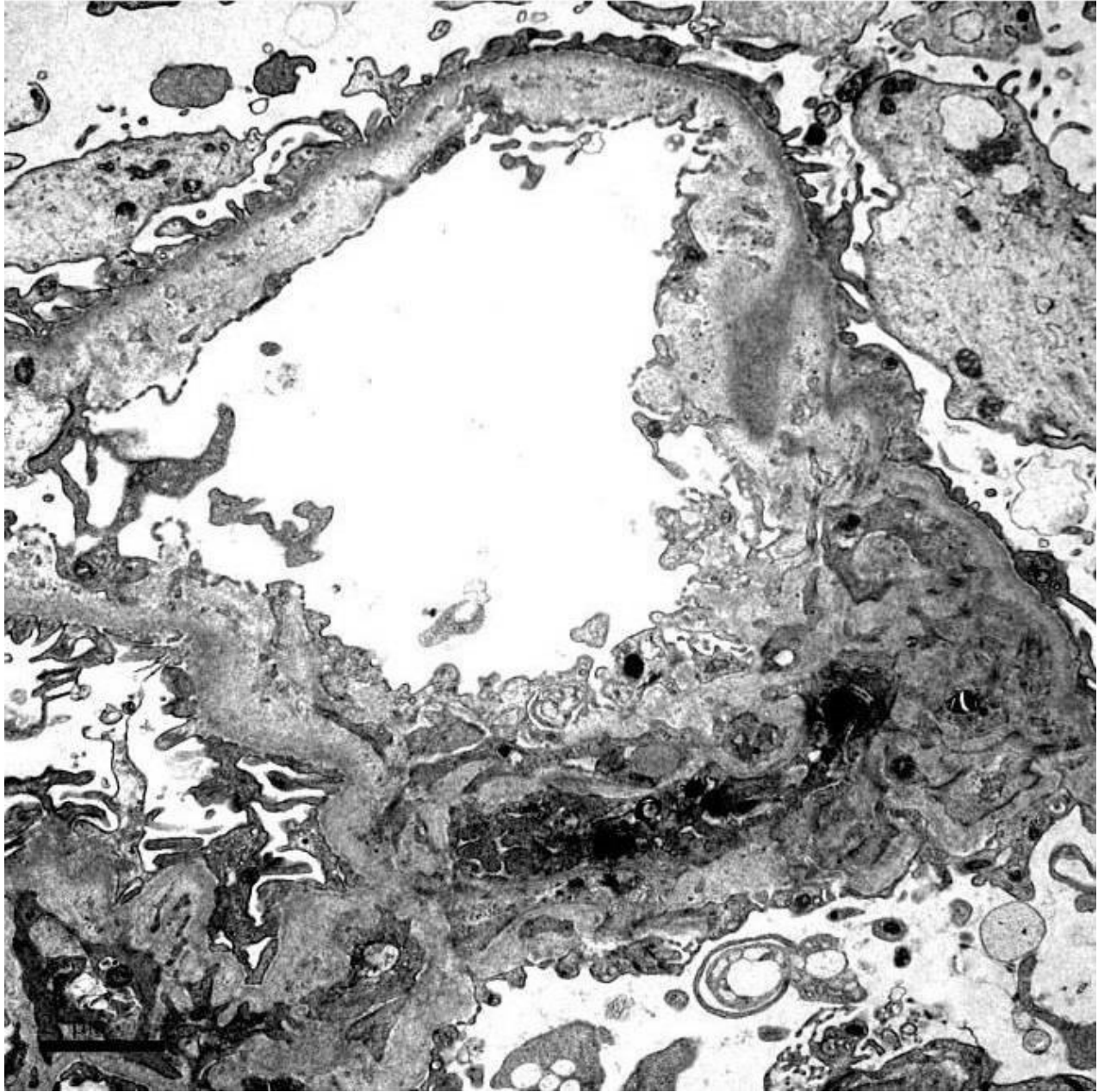
IgM

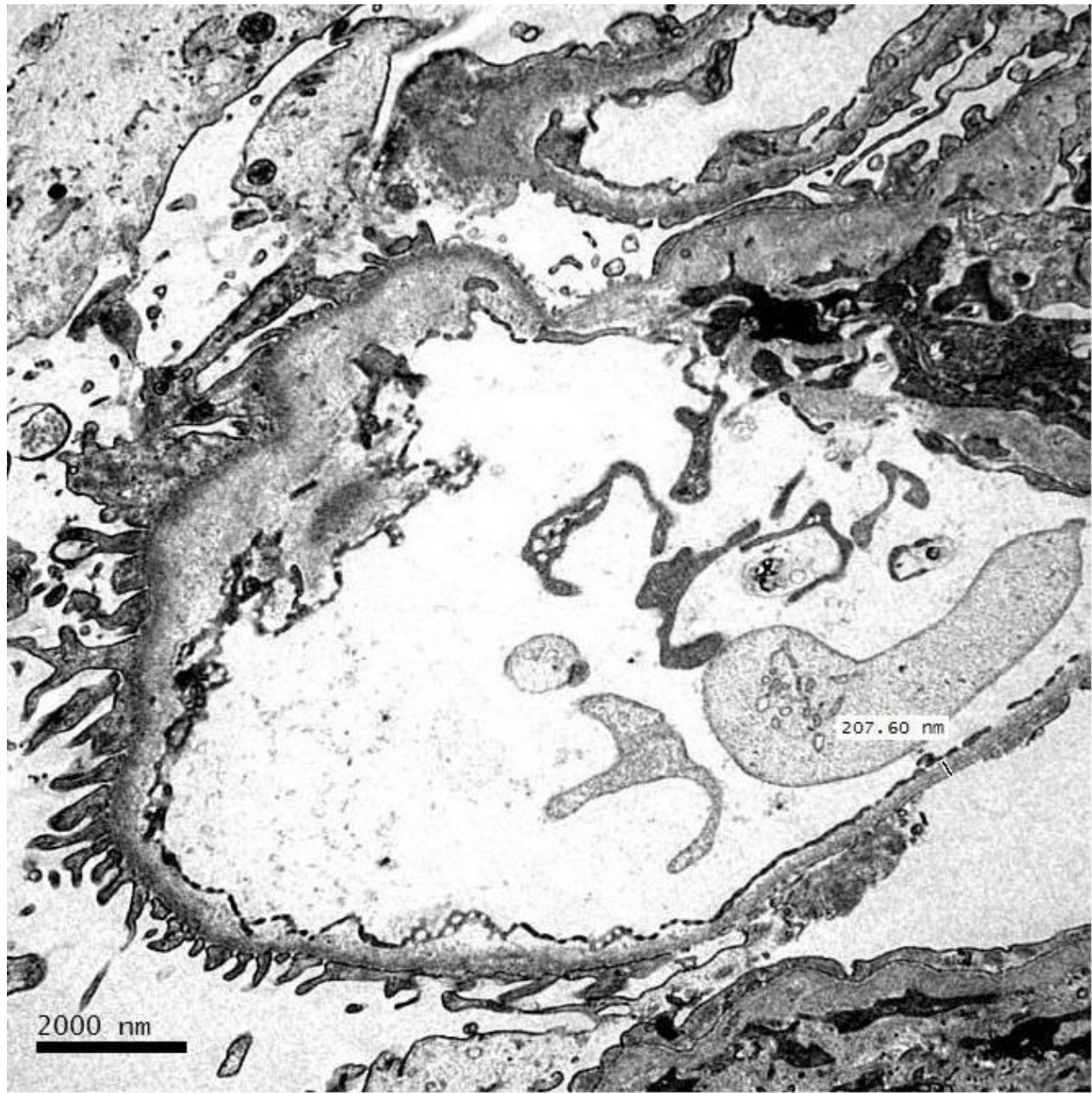


C3











# RENAL BIOPSY CLINICOPATHOLOGICAL WORKSHOP 2018



**PATHOLOGY**



Division of Pathology  
Singapore General Hospital



Department of Renal Medicine  
Singapore General Hospital



**MEDICINE**