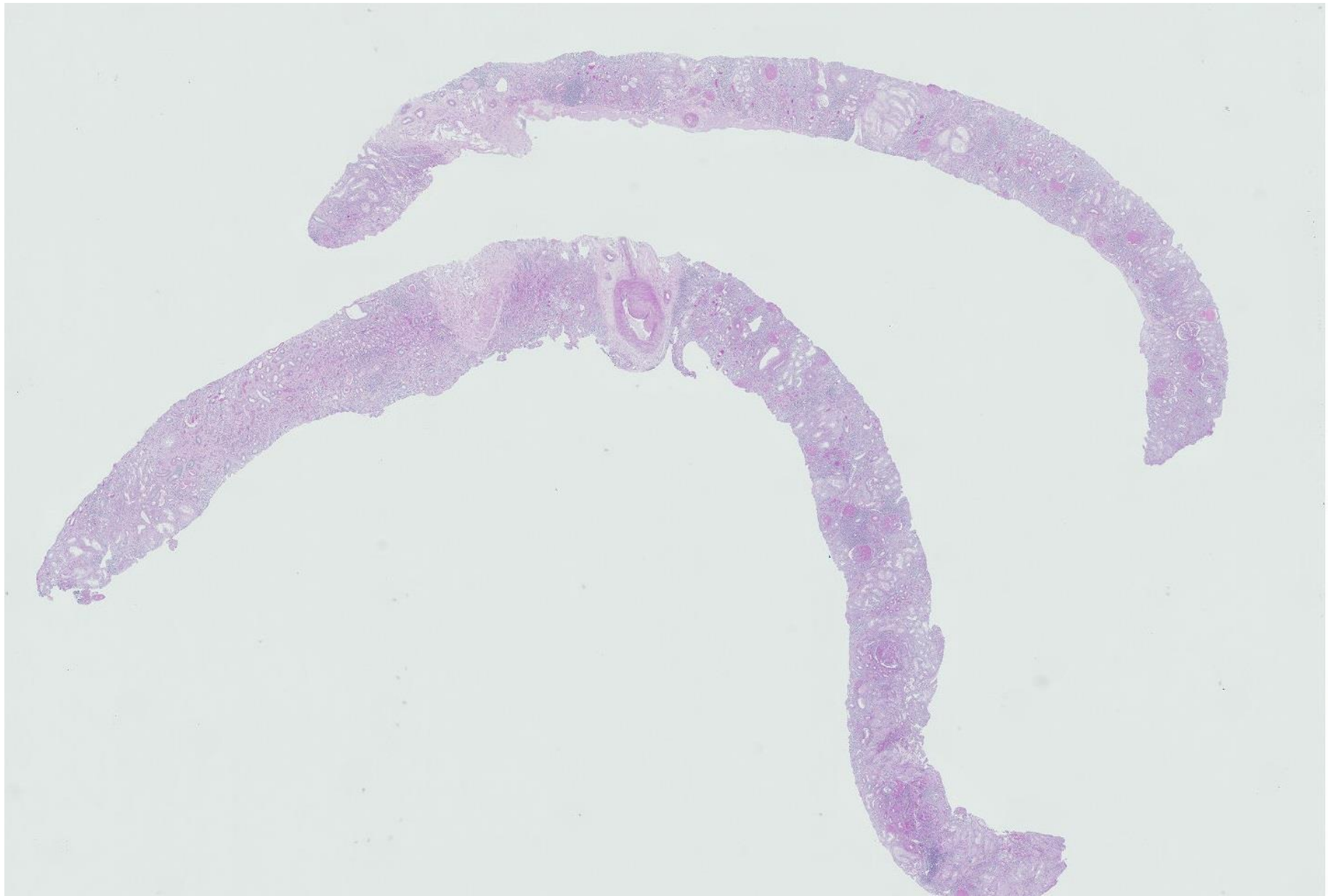
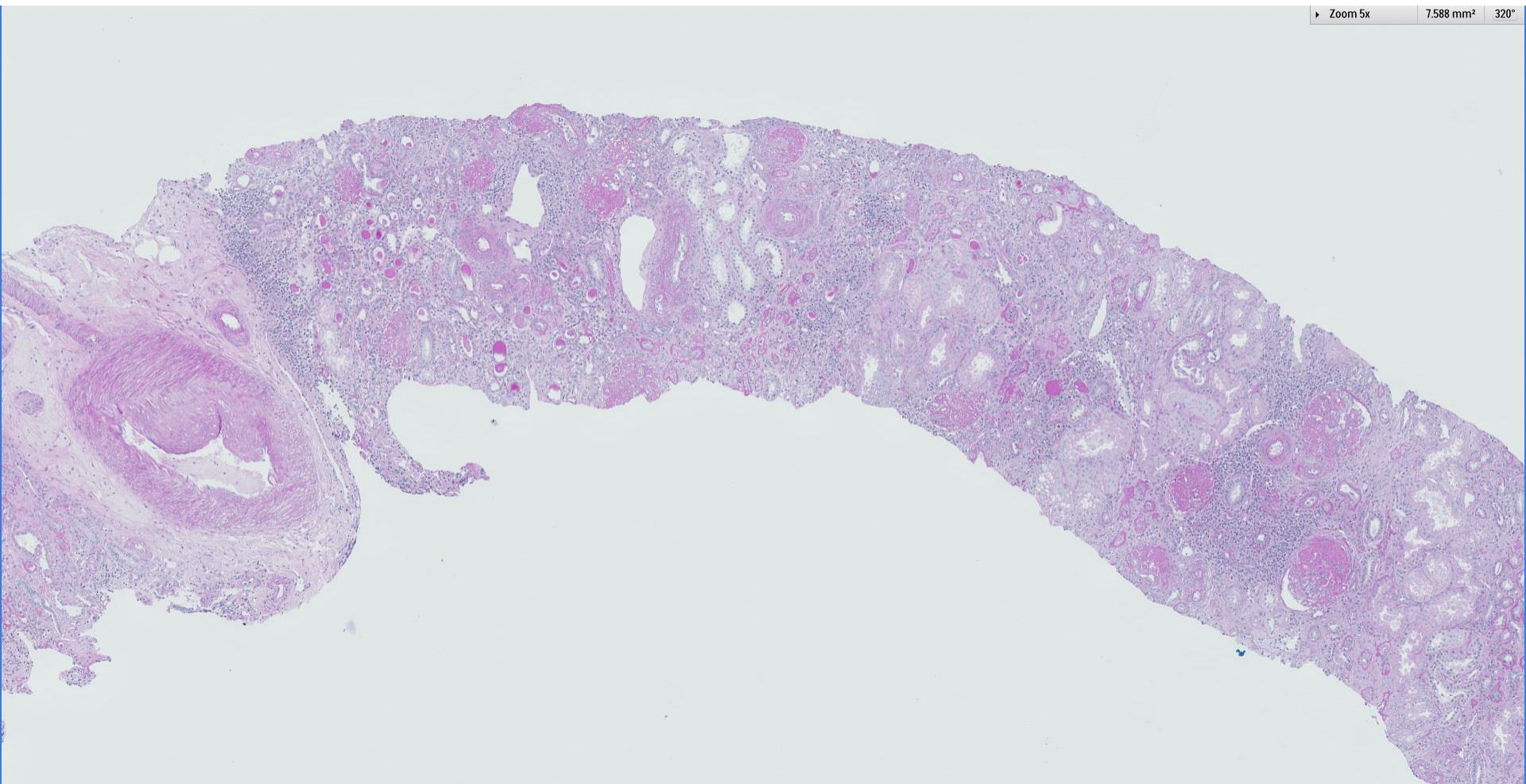
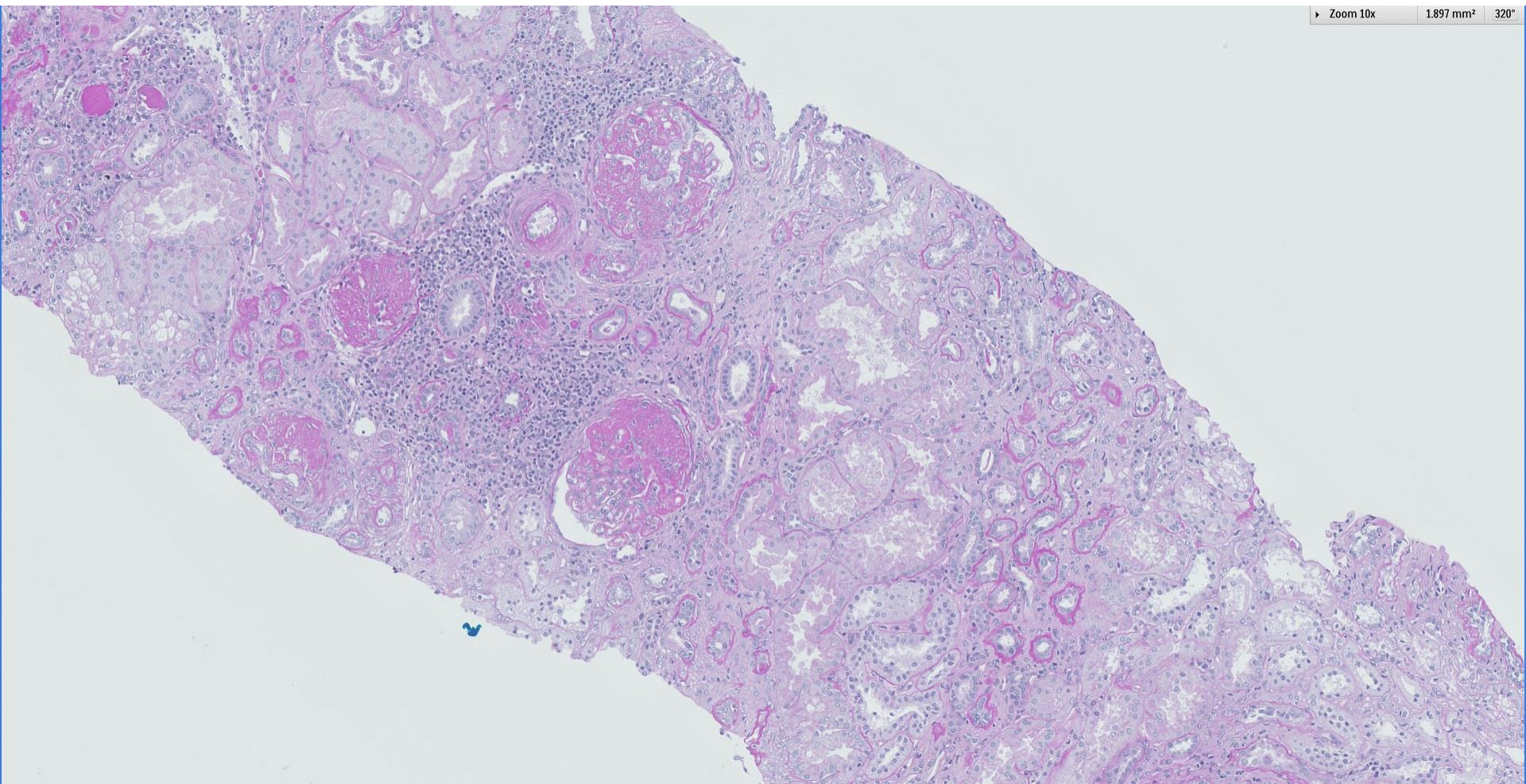


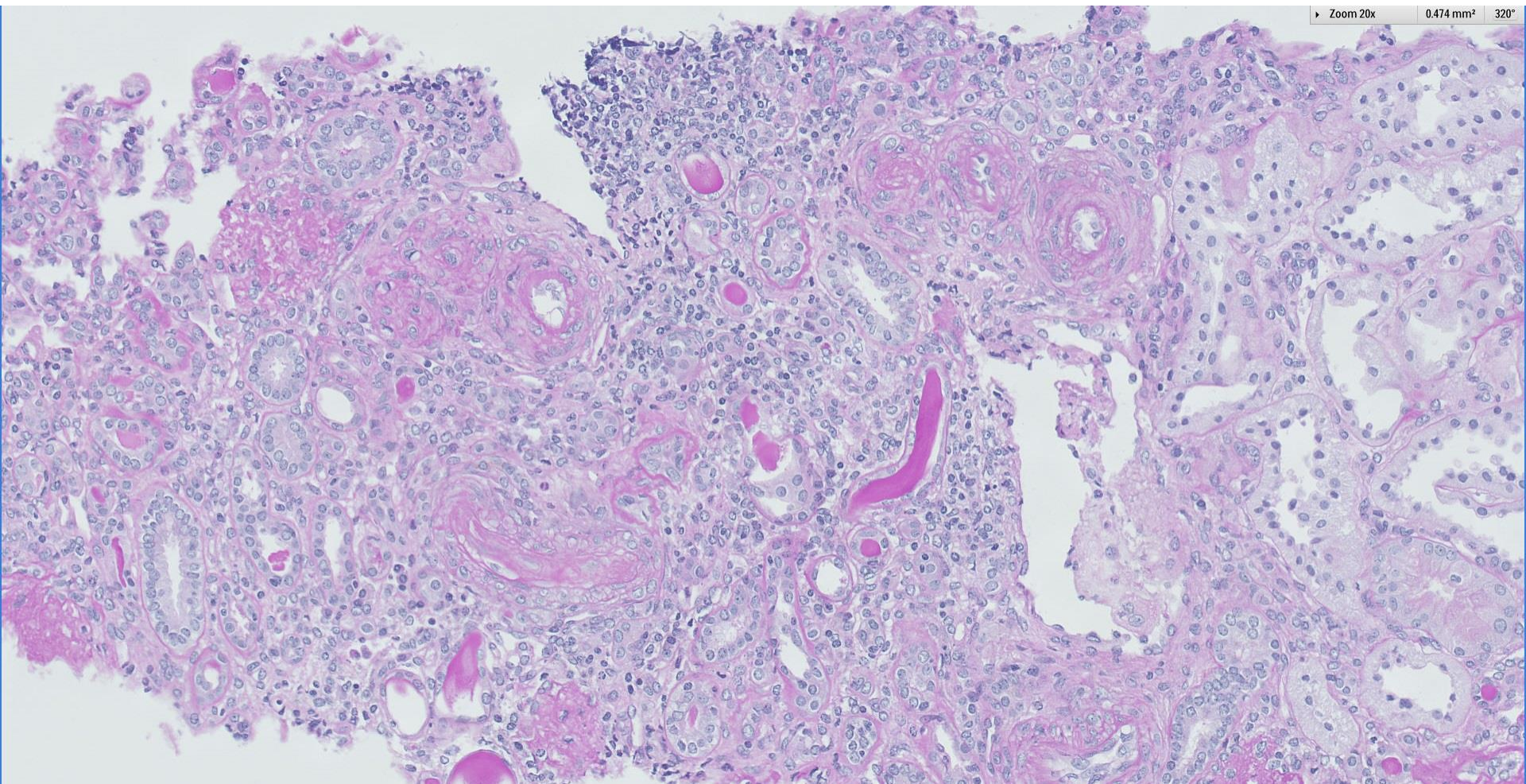
Case 56

29 year old Malay lady with repeated episodes of pyelonephritis and cystitis. Accelerated decline of GFR with hypertension and nephrotic range proteinuria.

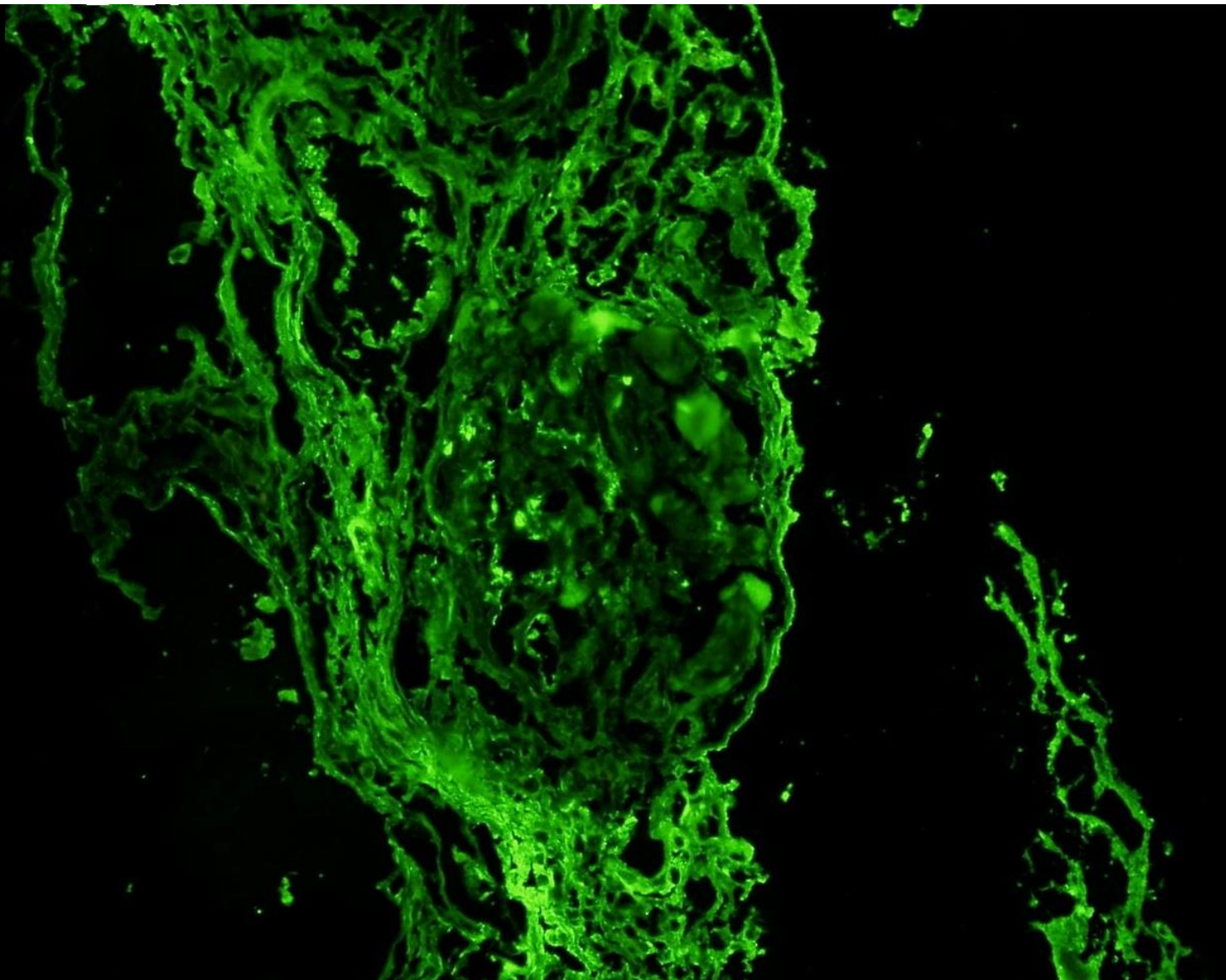




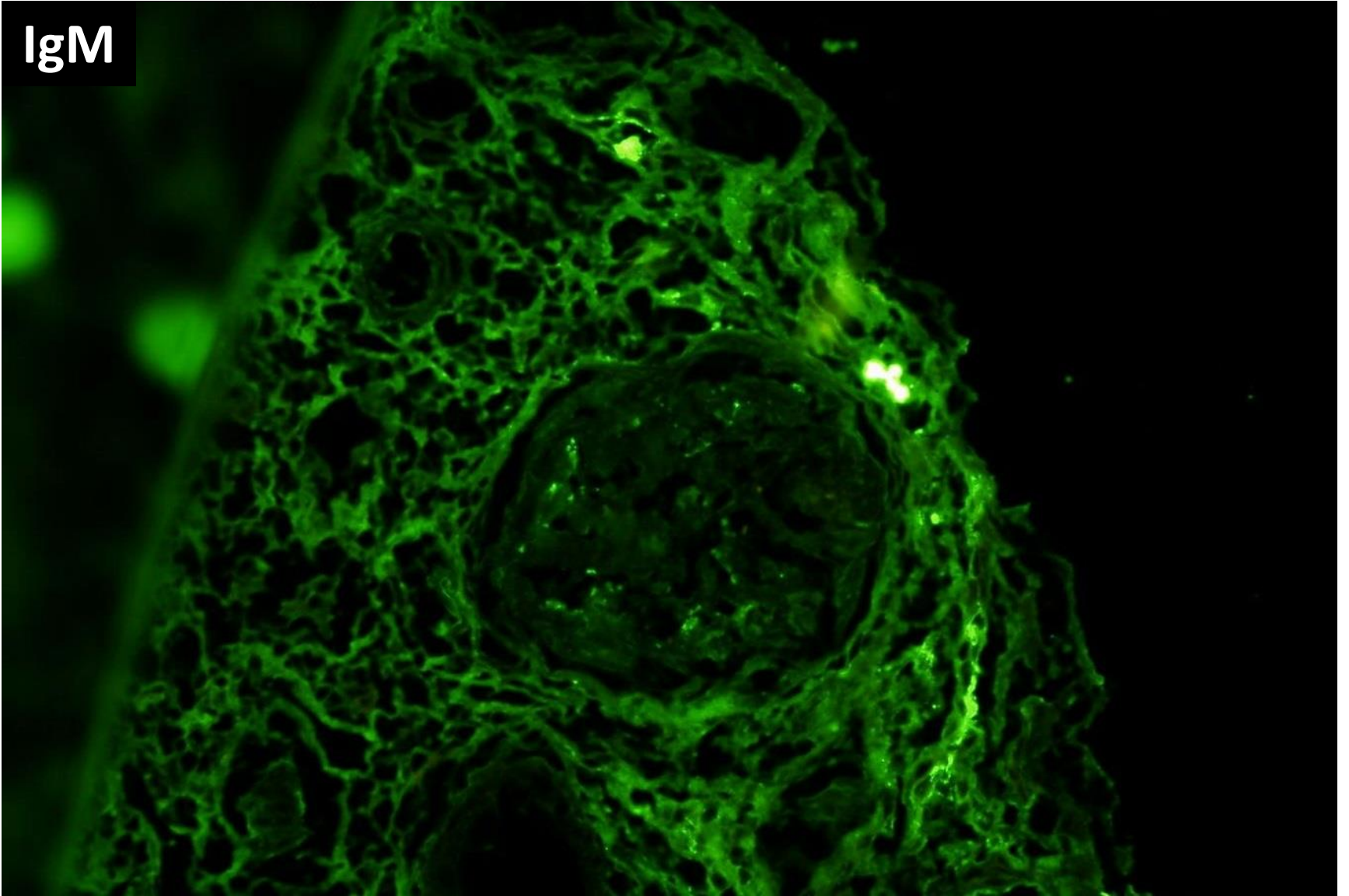




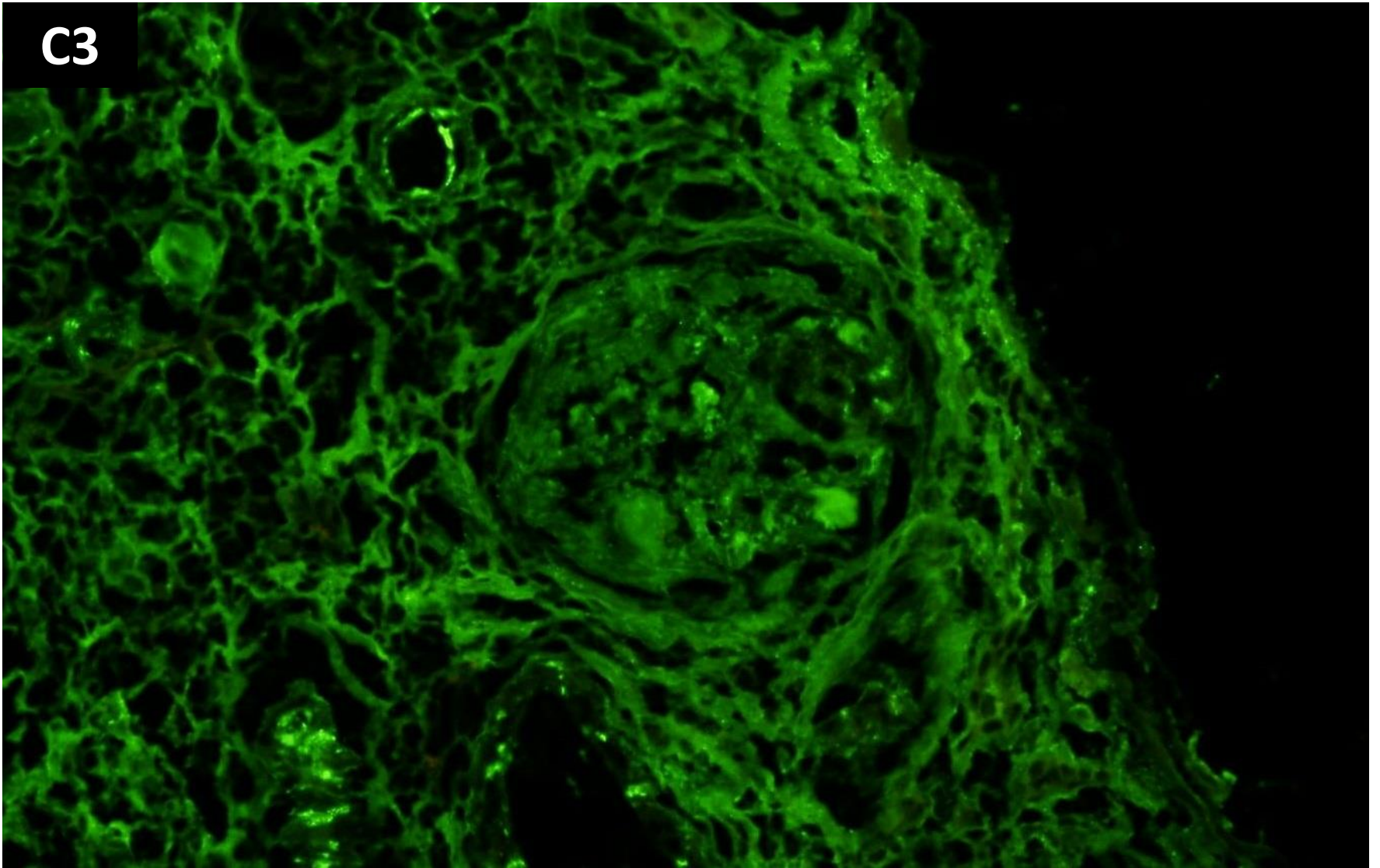
IgA



IgM



C3



No glomeruli were present in the tissue received for electron
microscopy.
No ultrastructural studies performed.



RENAL BIOPSY CLINICOPATHOLOGICAL WORKSHOP 2018



PATHOLOGY



Division of Pathology
Singapore General Hospital



Department of Renal Medicine
Singapore General Hospital



MEDICINE