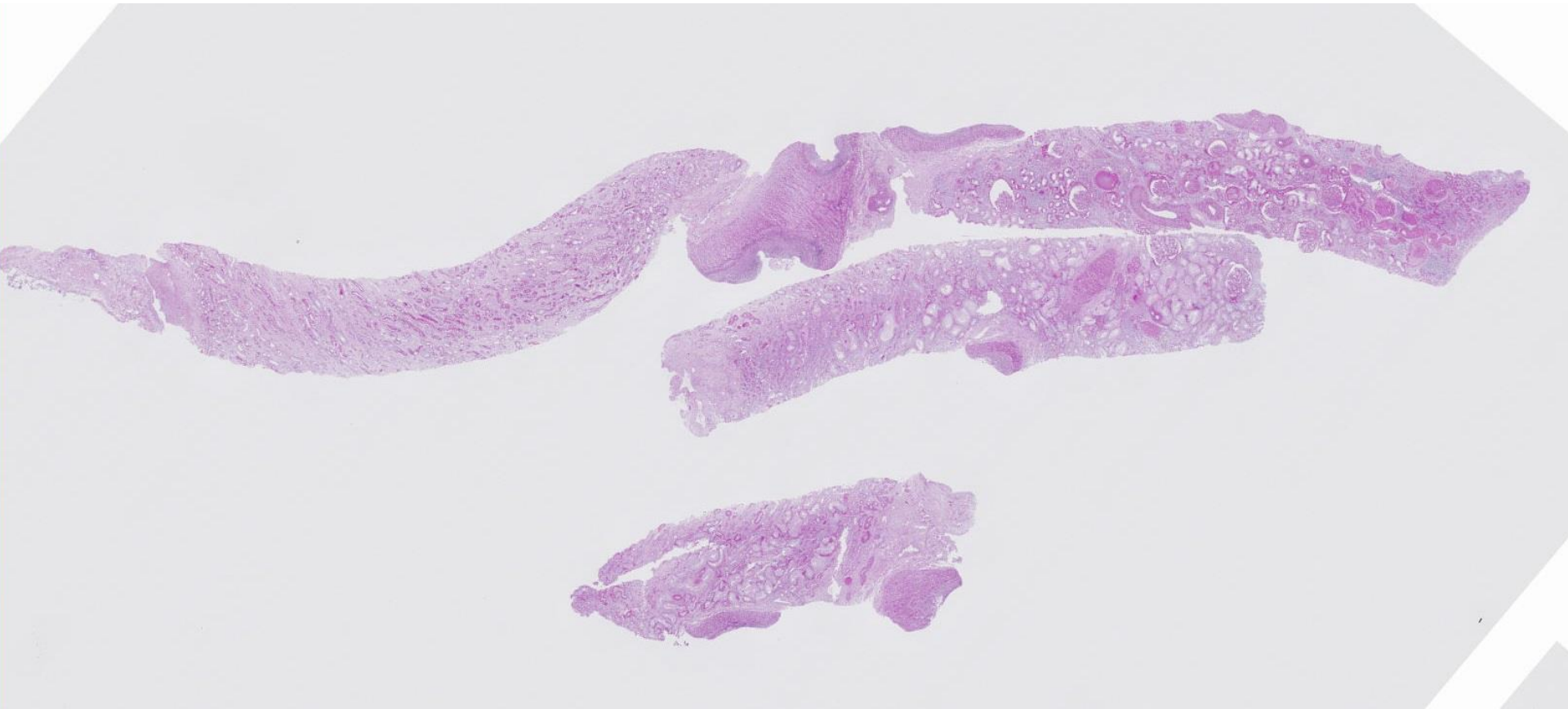
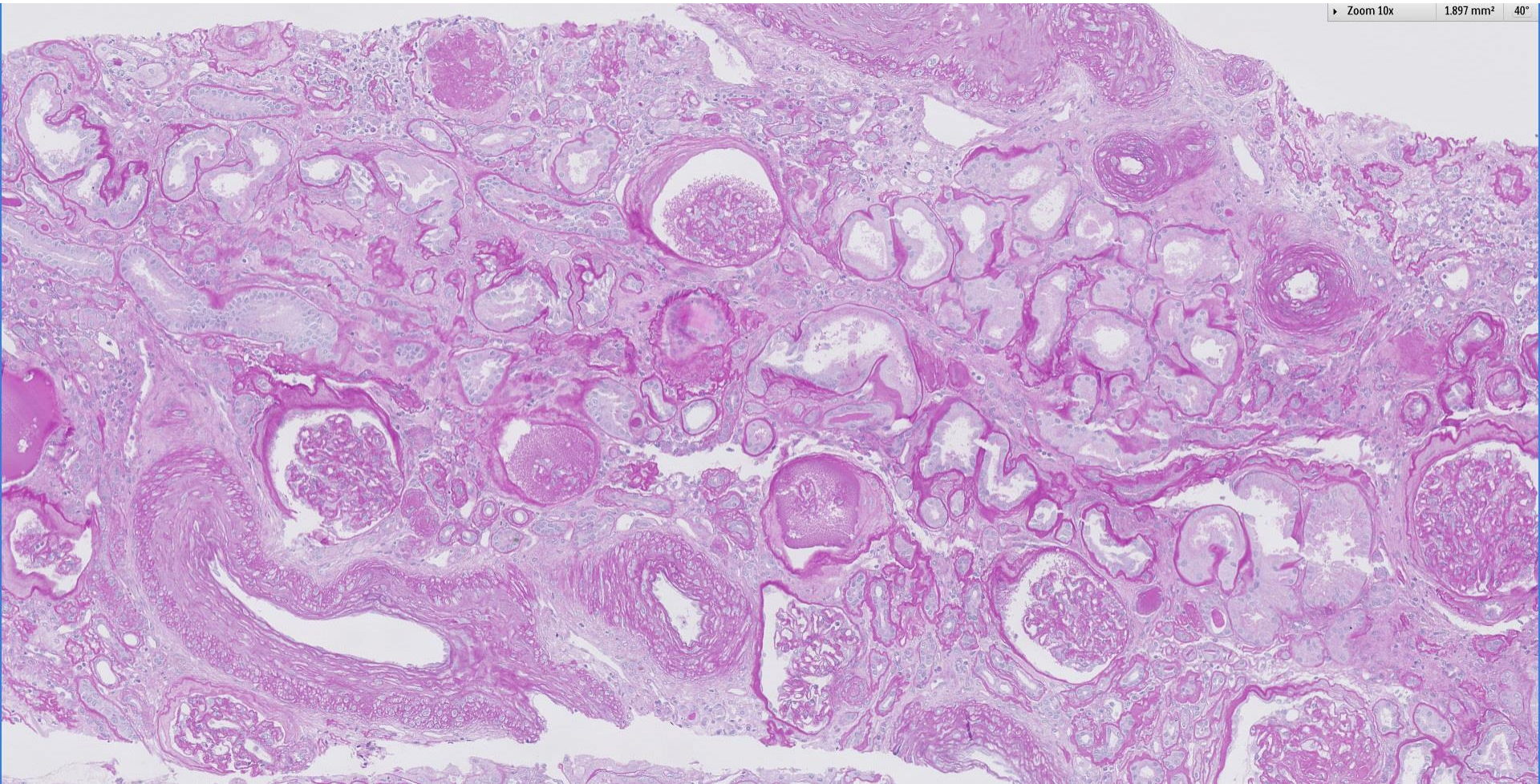
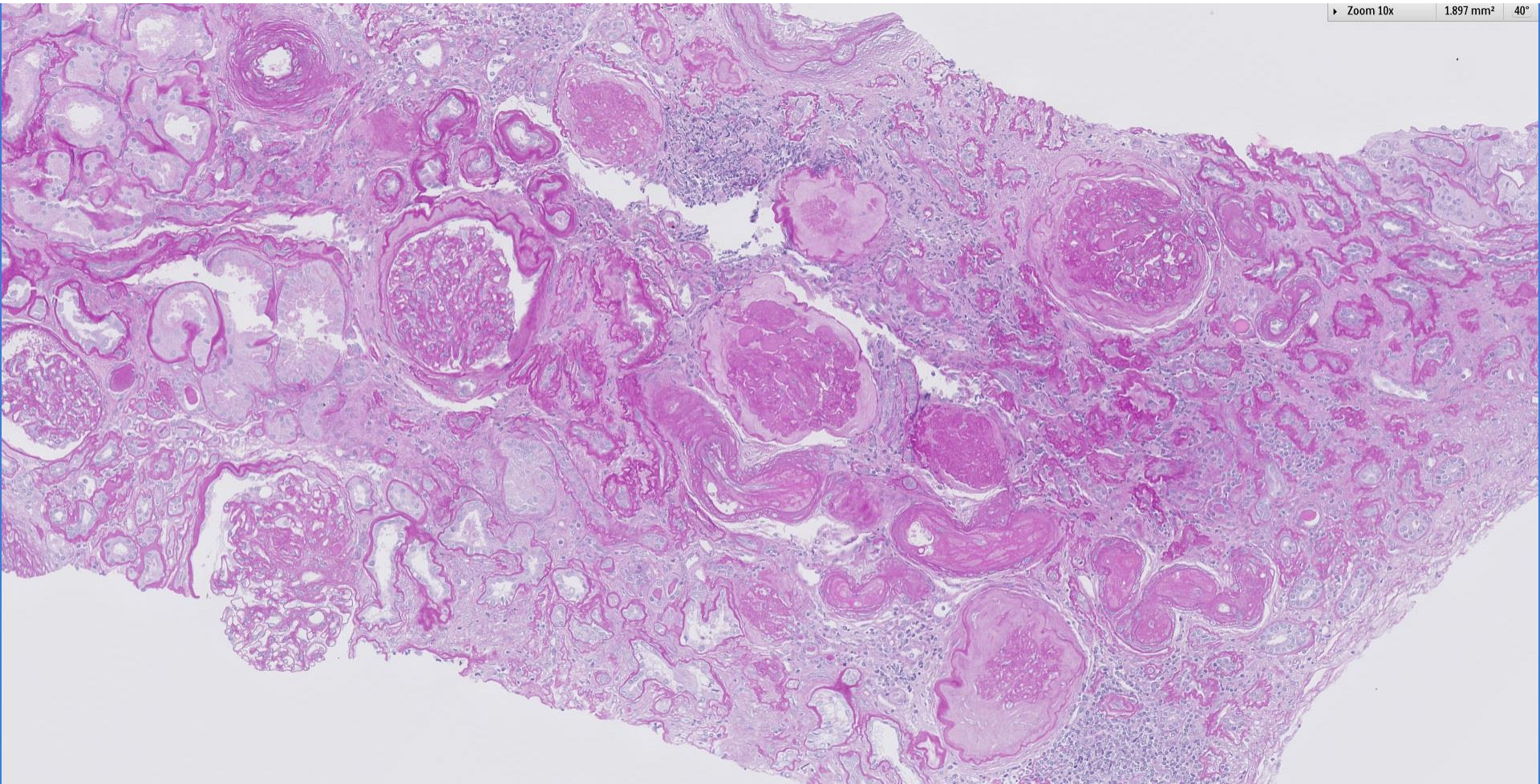


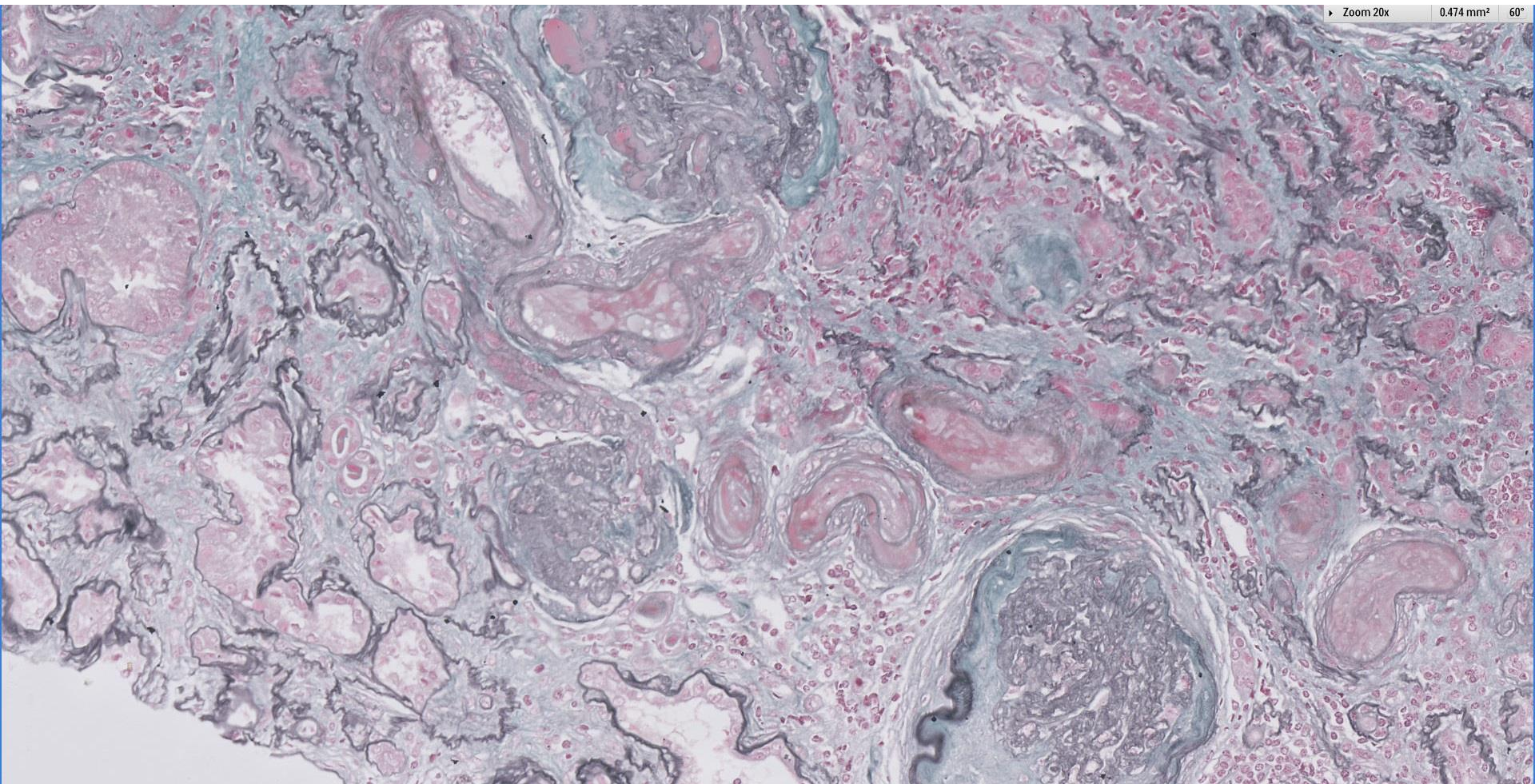
Case 55

54 year old Malay lady presented with hypertensive urgency and fluid overload. Creatinine was 520 with no known previous baseline.

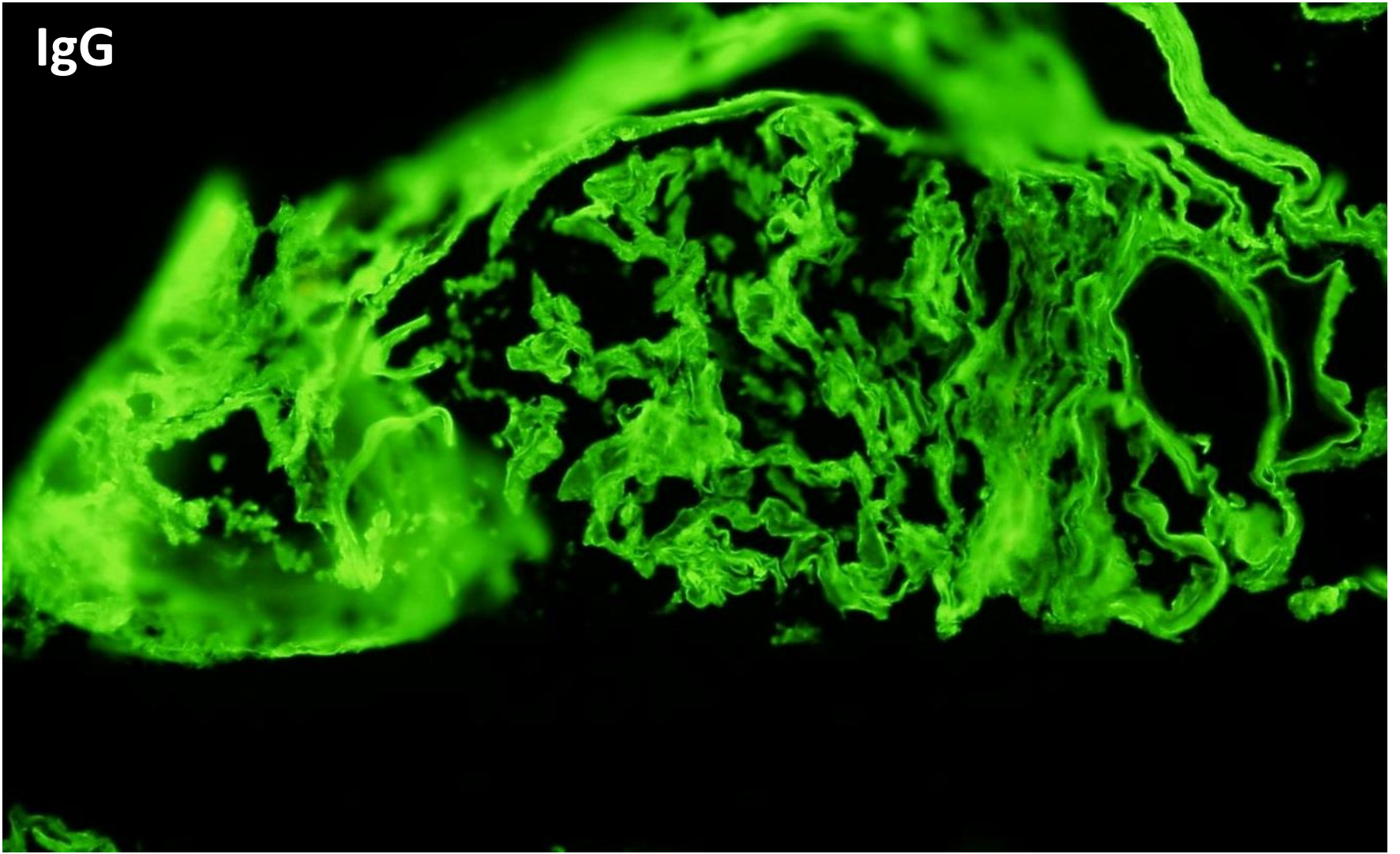




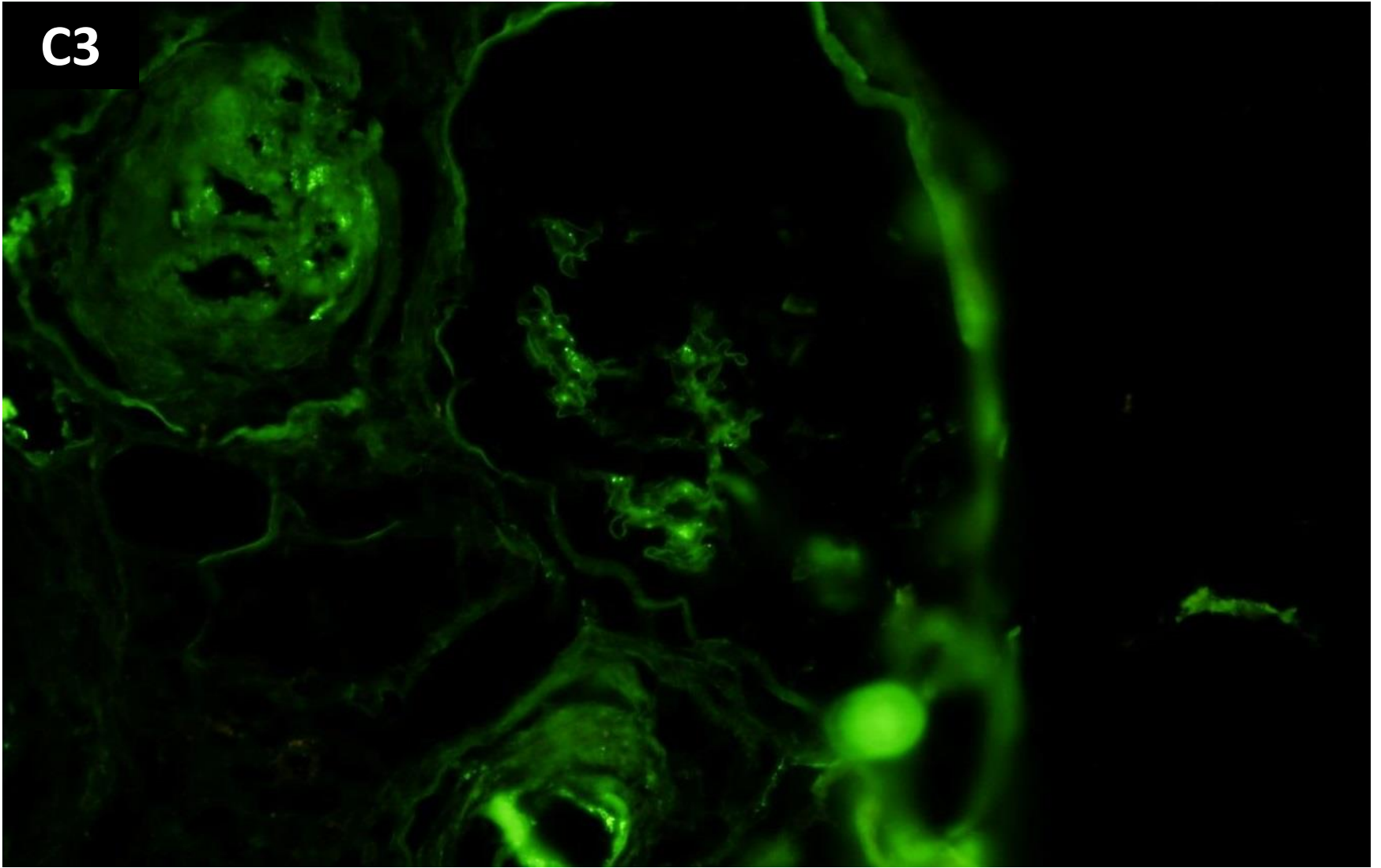


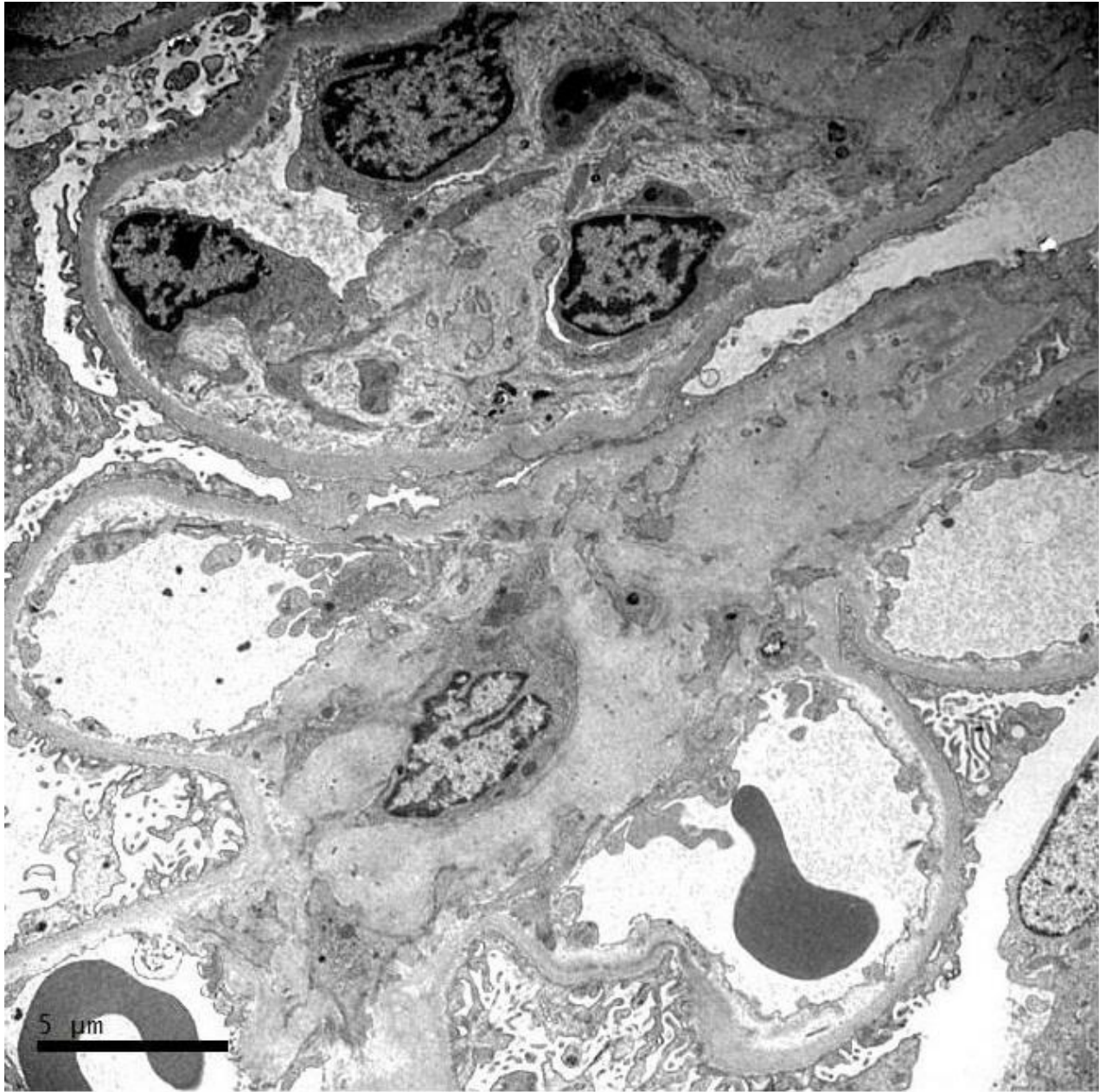


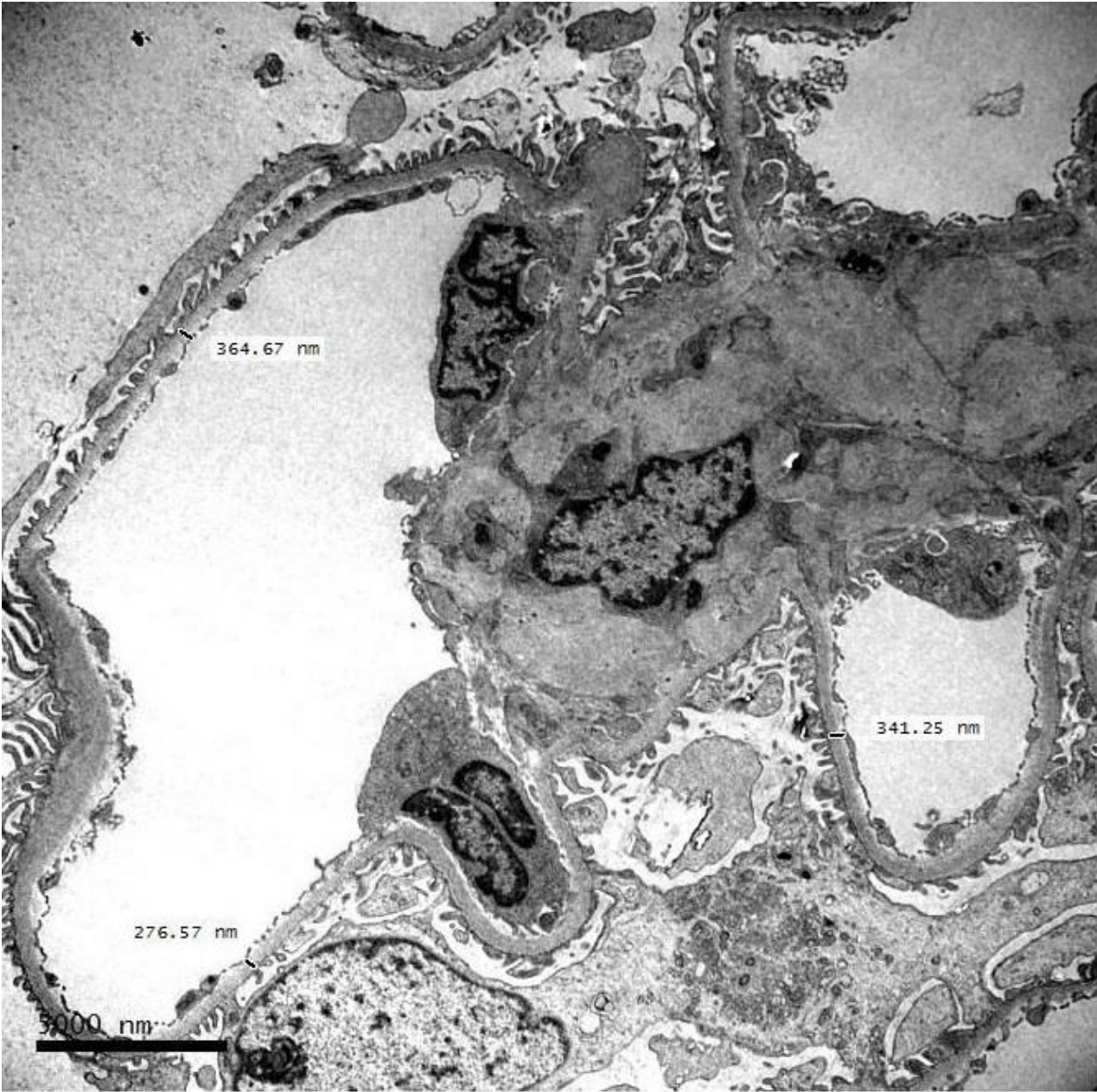
IgG

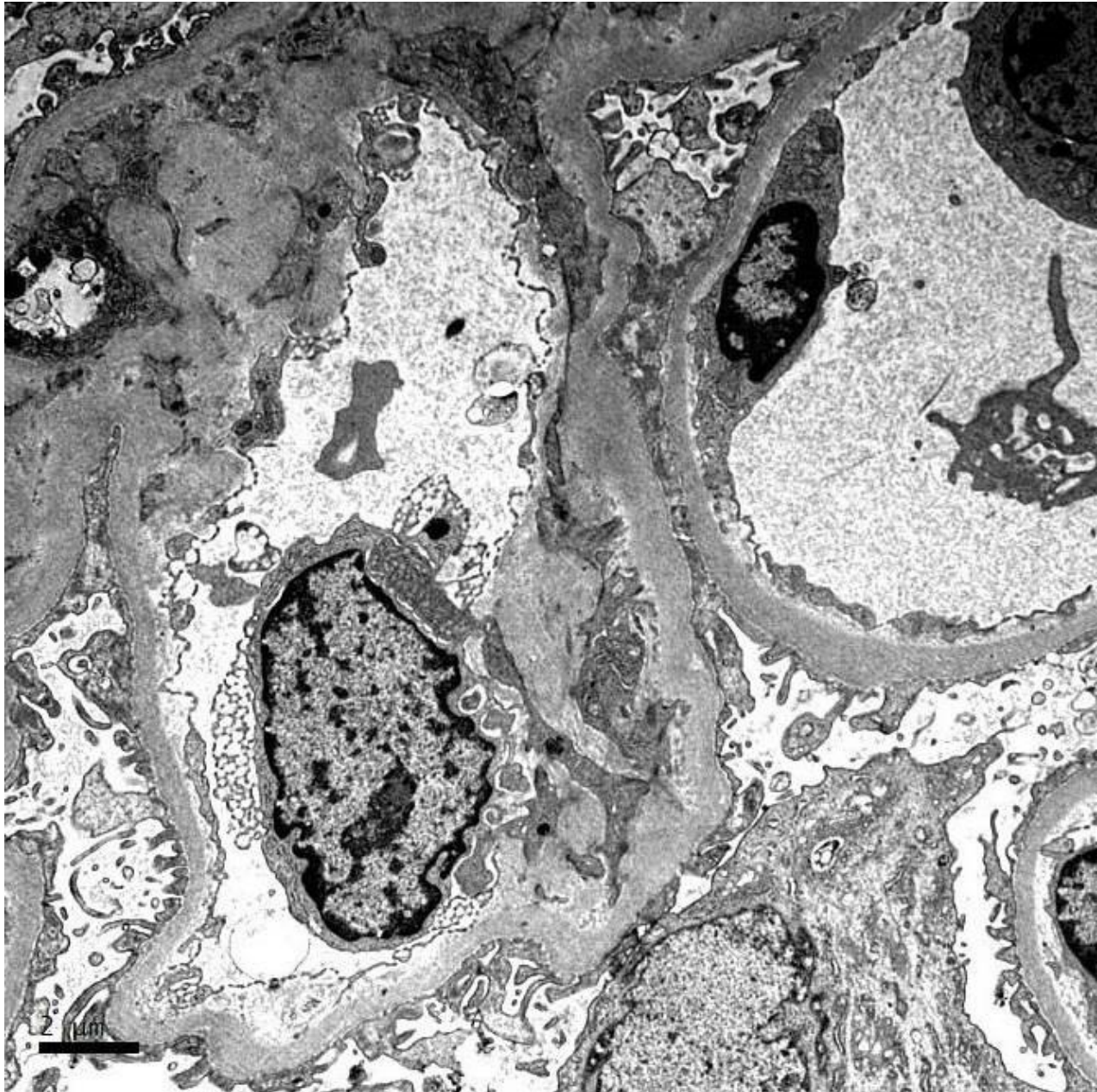


C3











RENAL BIOPSY CLINICOPATHOLOGICAL WORKSHOP 2018



PATHOLOGY



Division of Pathology
Singapore General Hospital



Department of Renal Medicine
Singapore General Hospital



MEDICINE