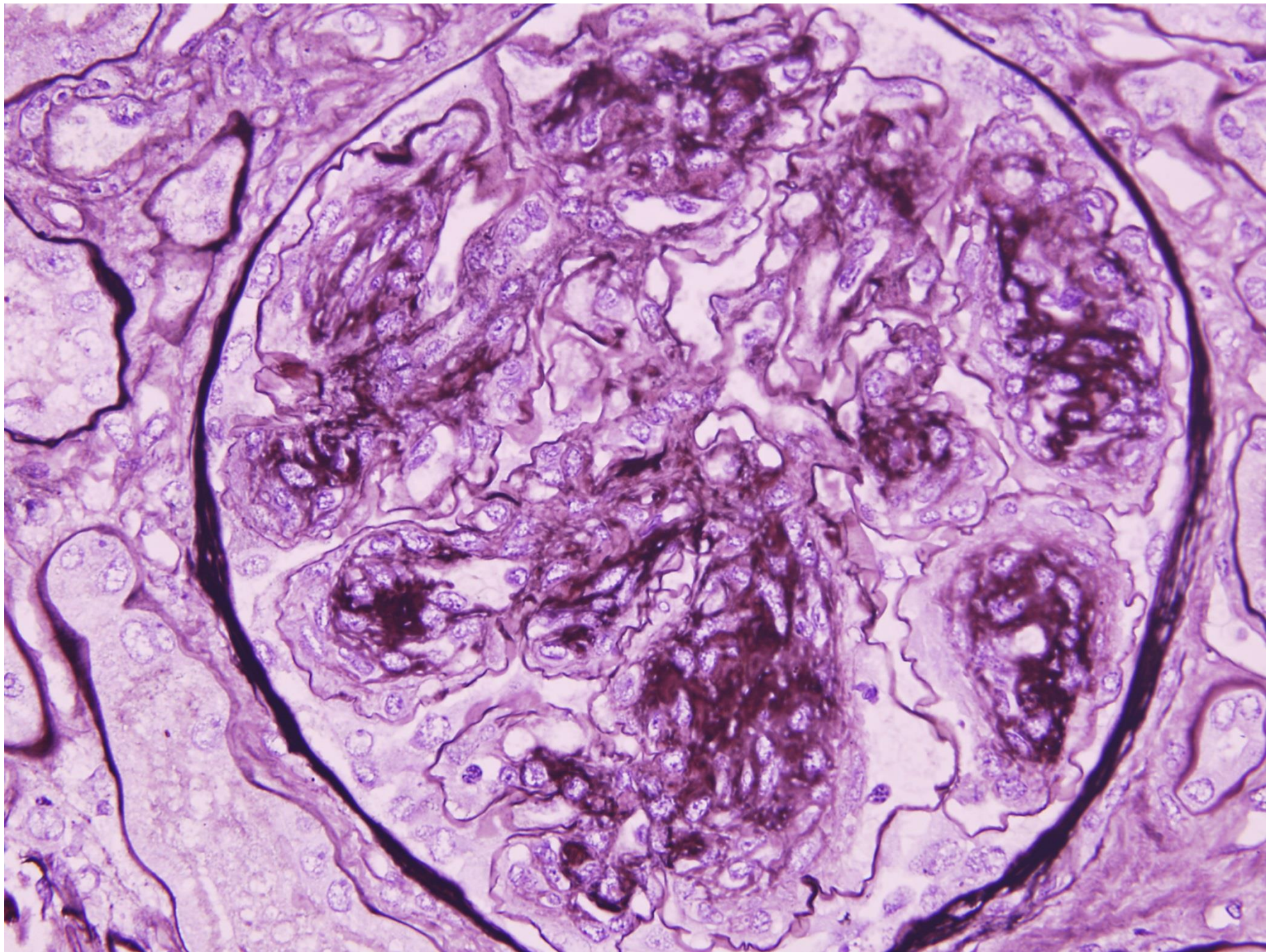
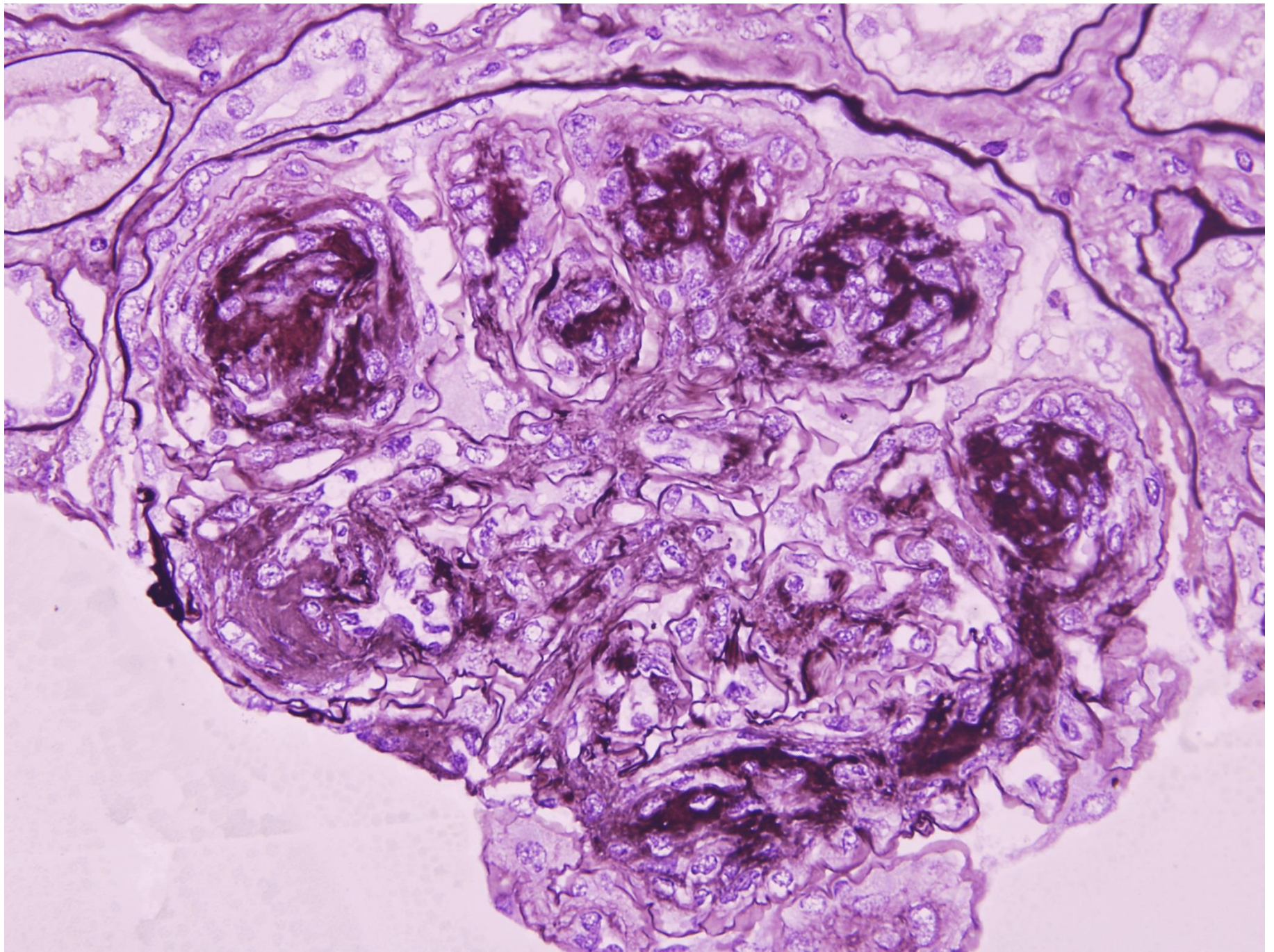
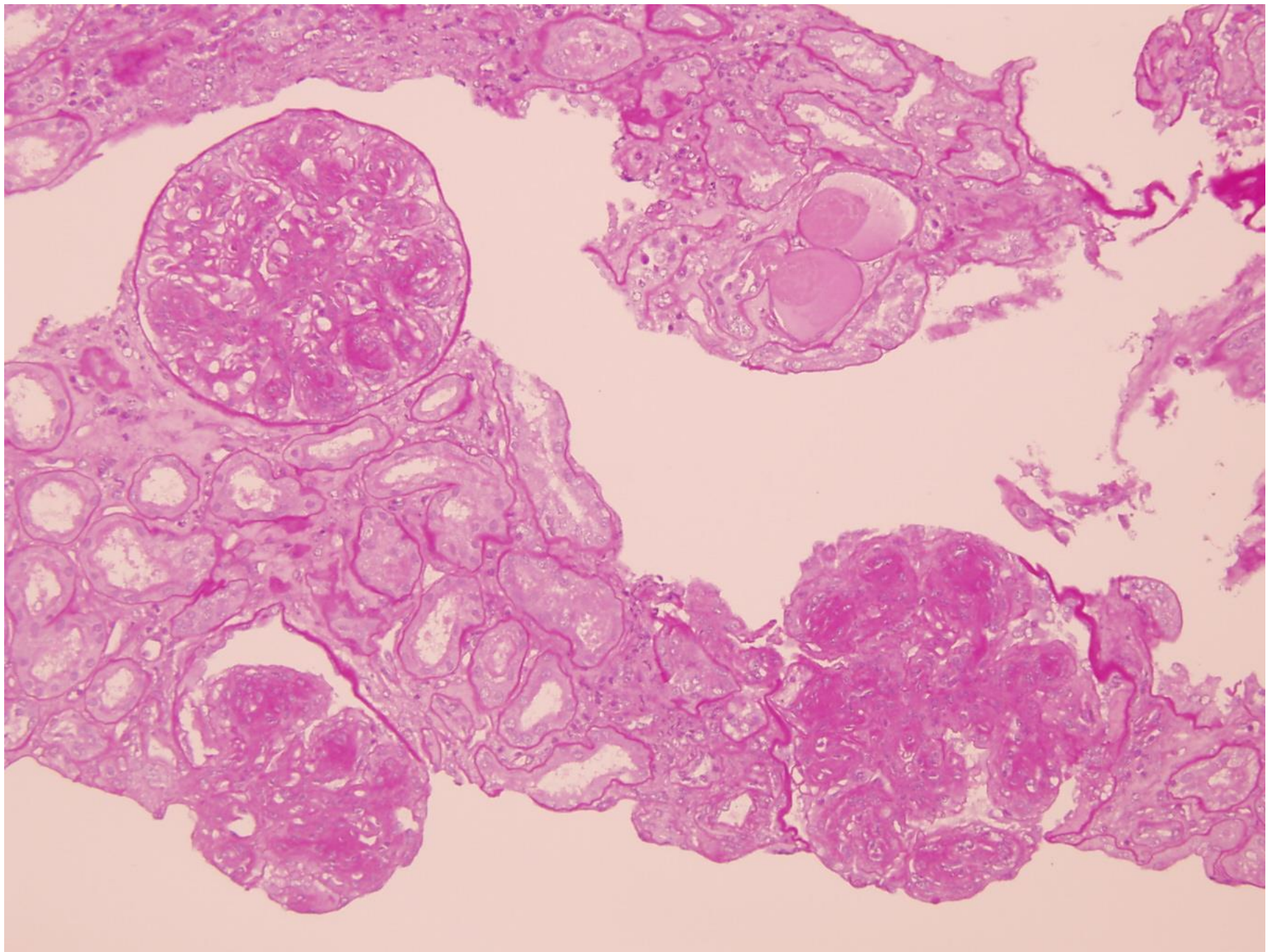


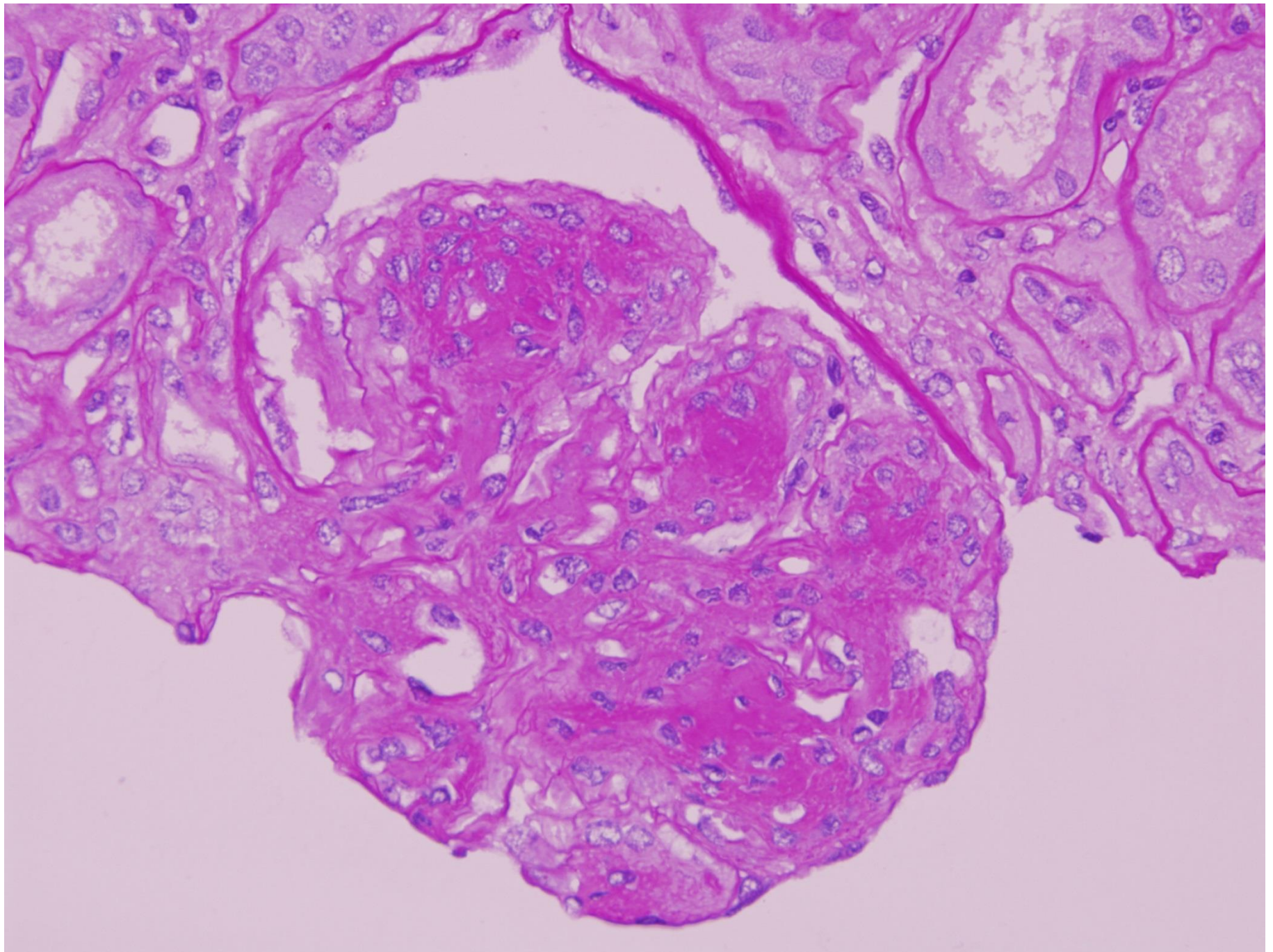
Case 48

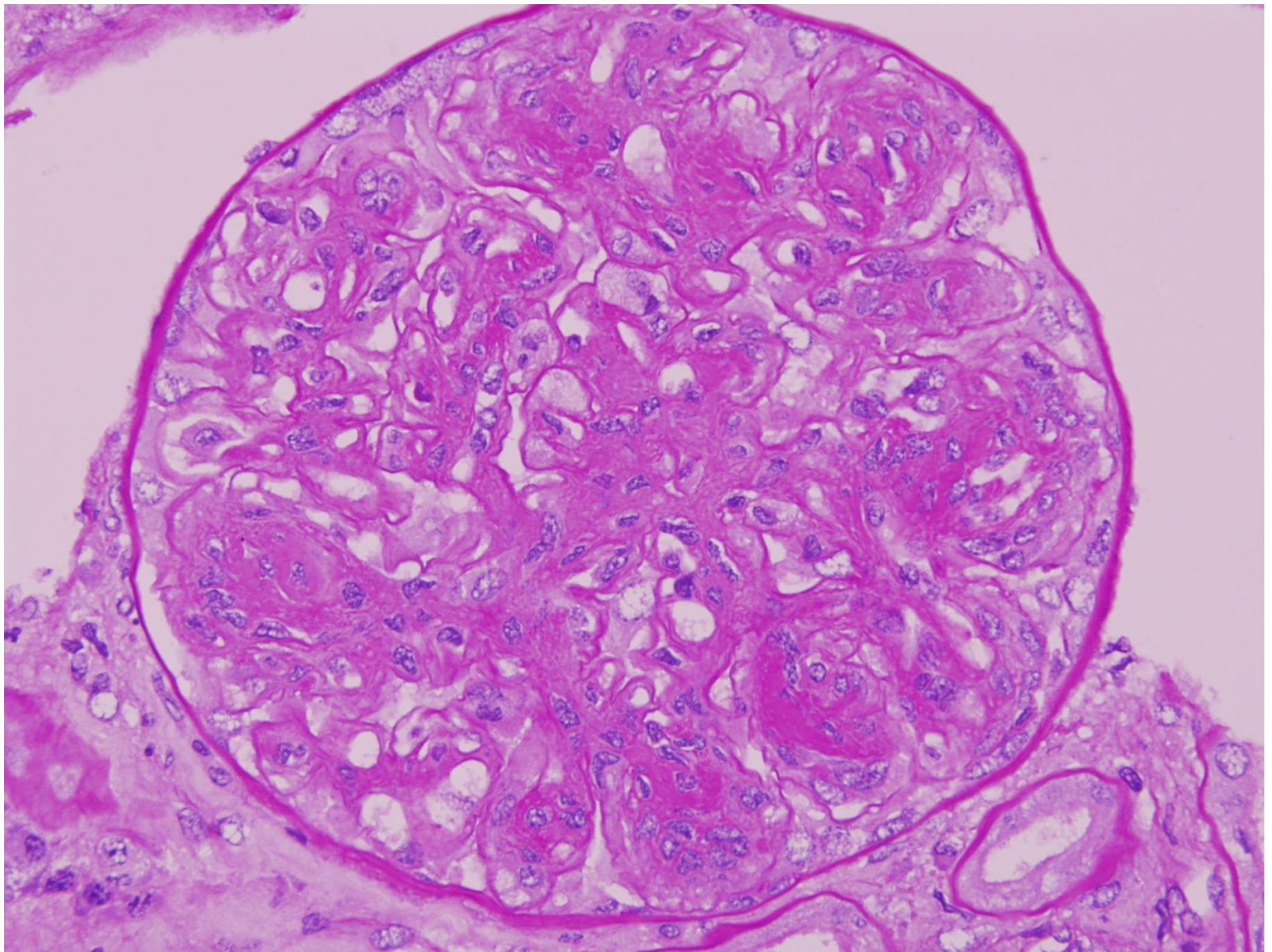
52 year old female with anaemia and proteinuria. Protein electrophoresis positive for anti-IgG and anti-kappa, M band 19 g/L.

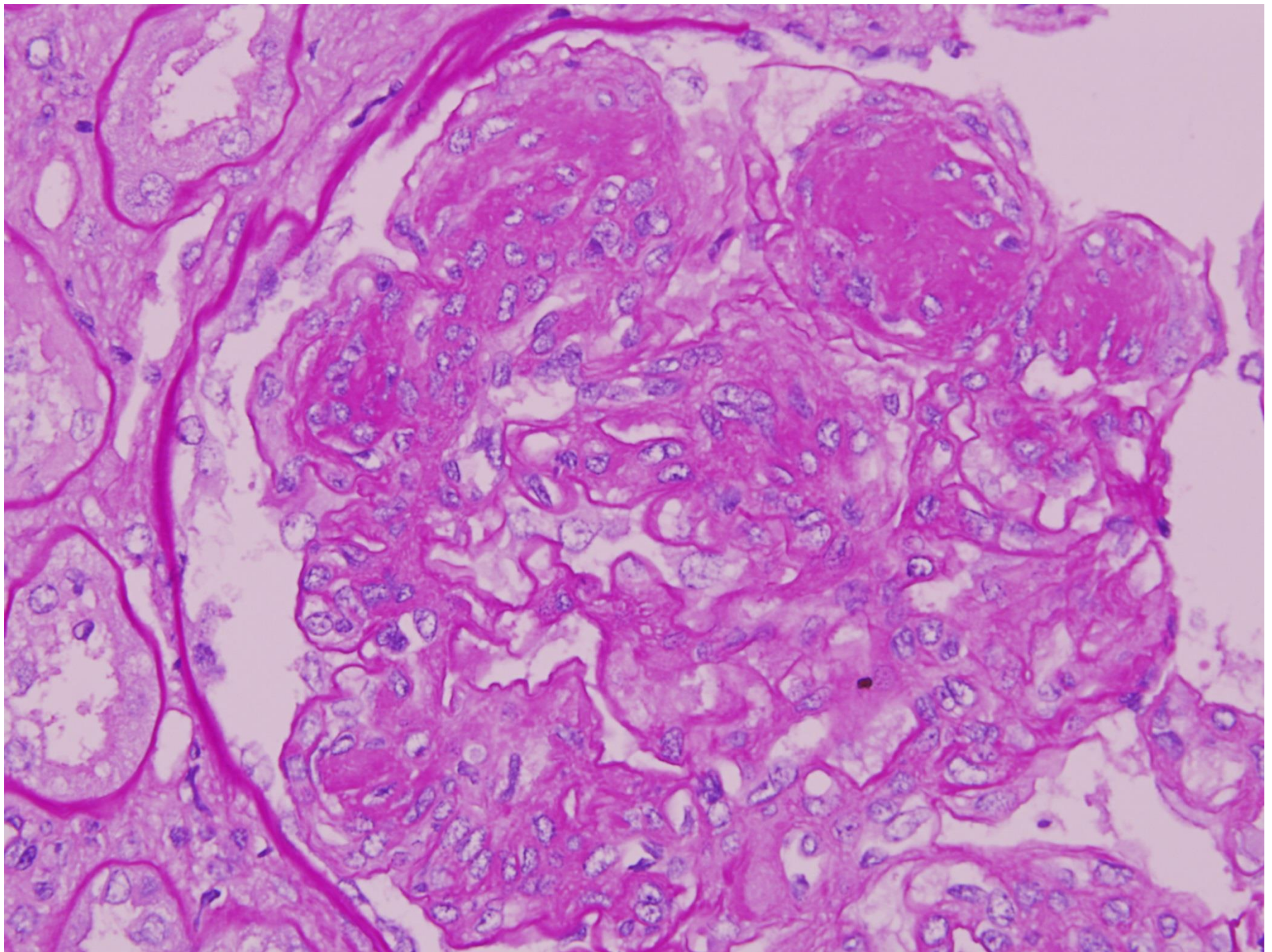


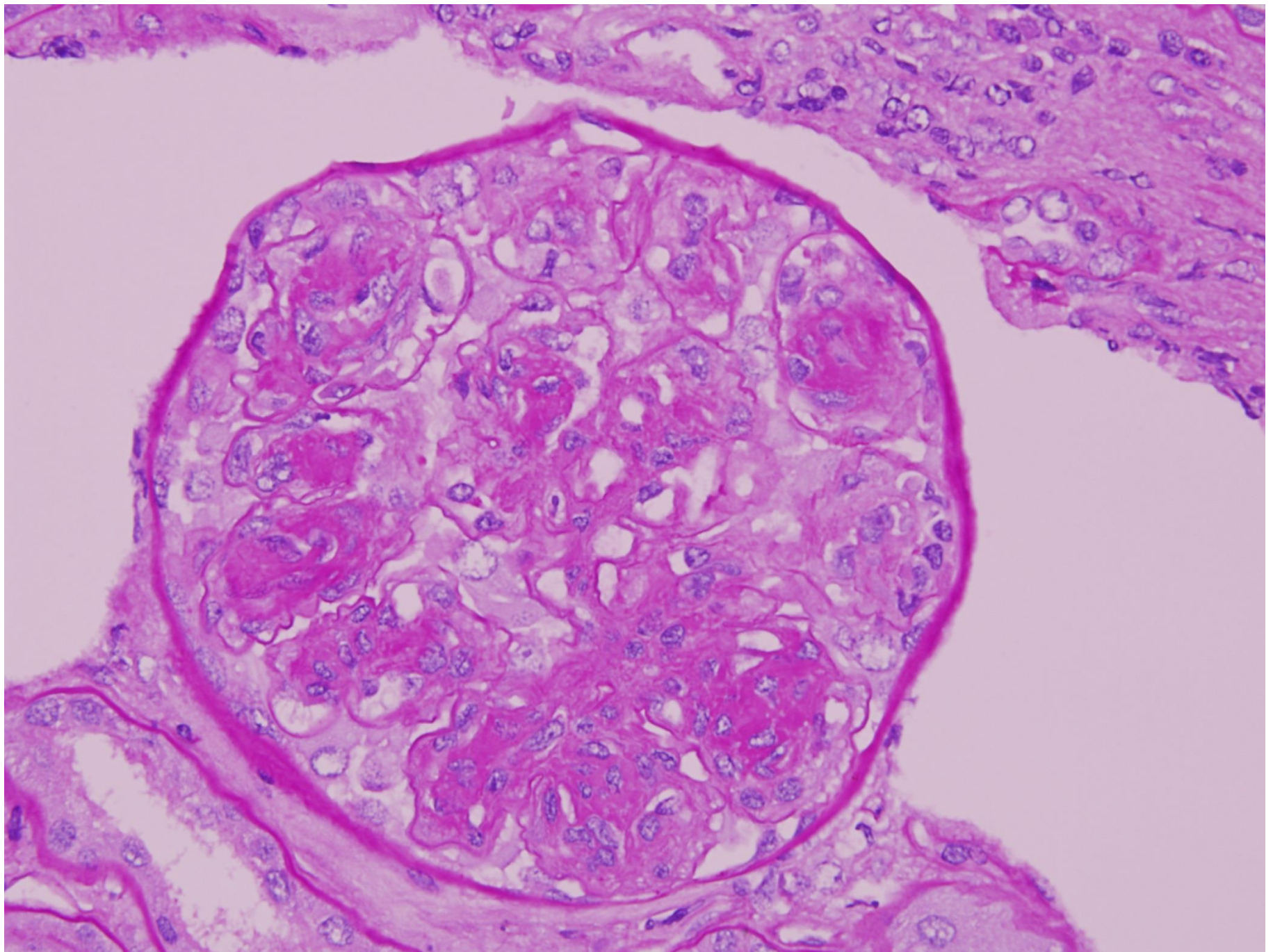


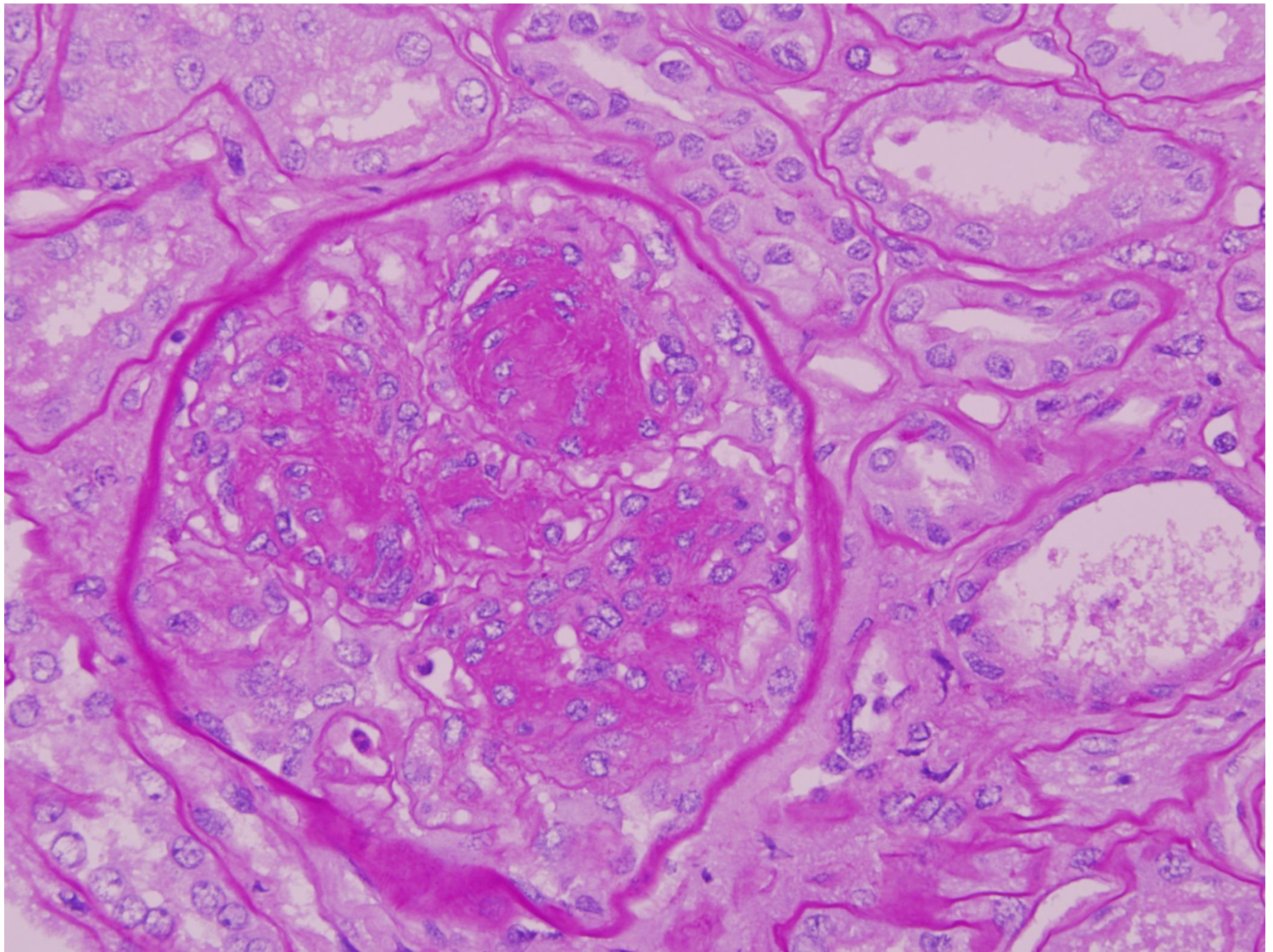


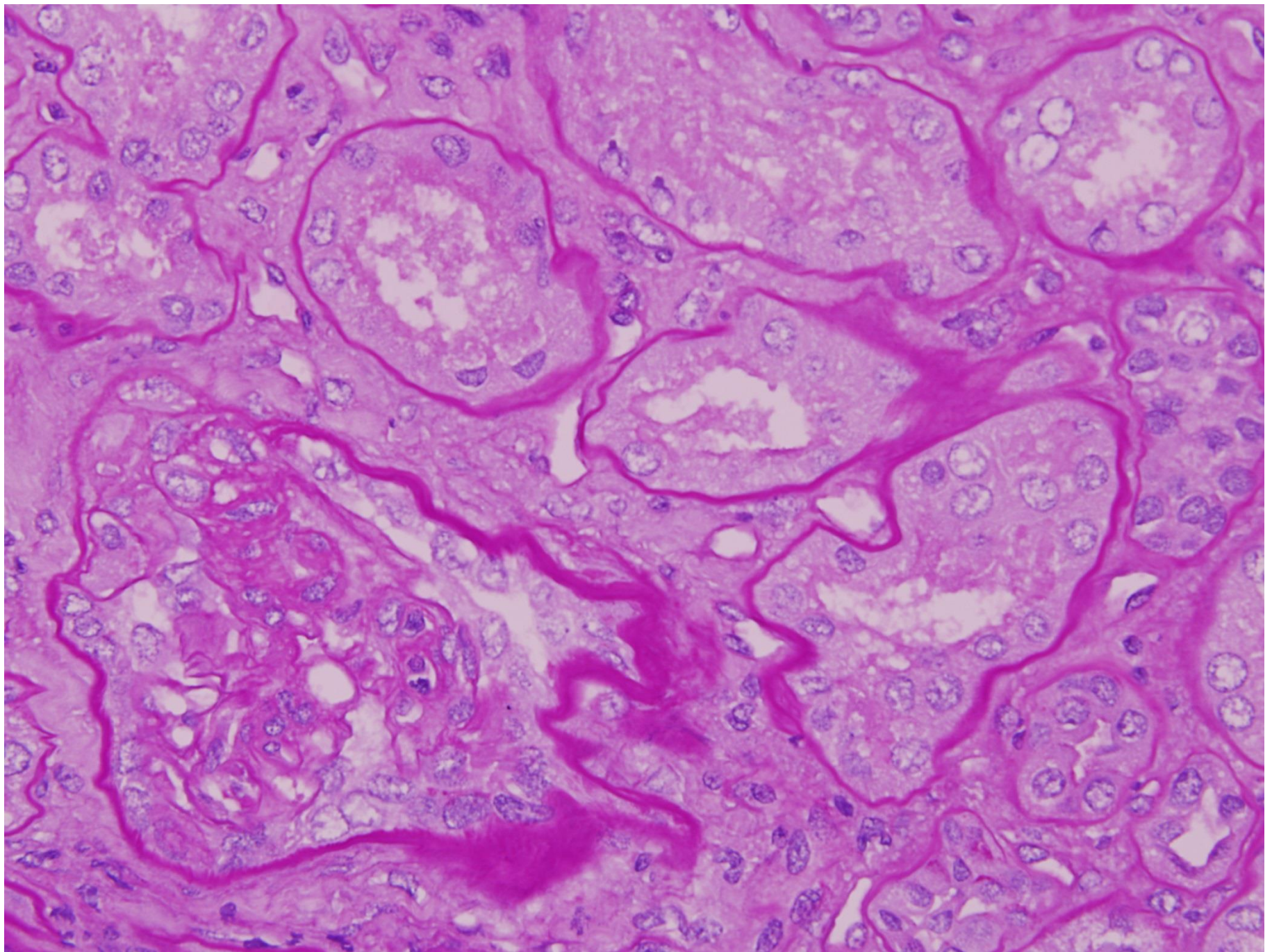


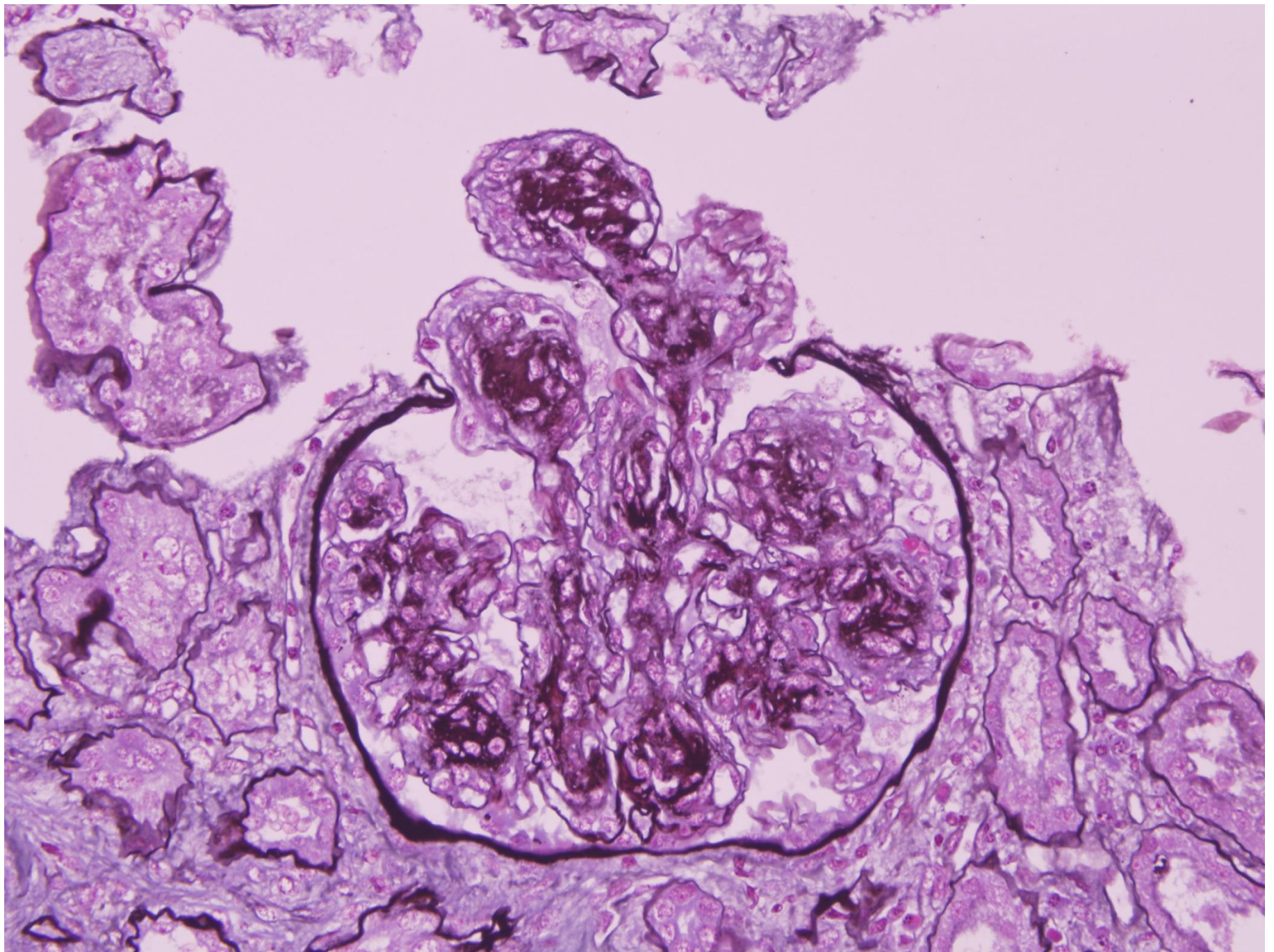




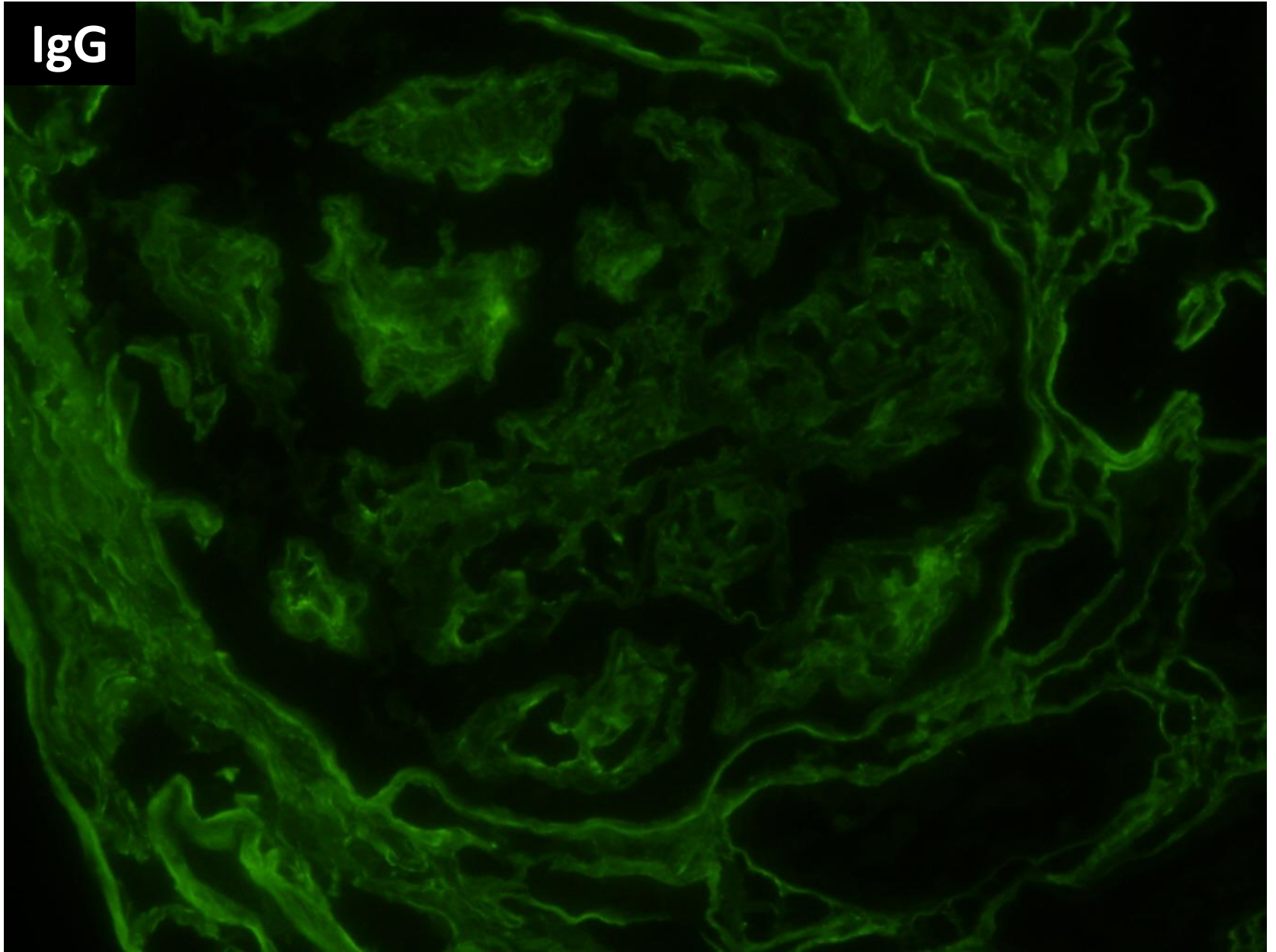




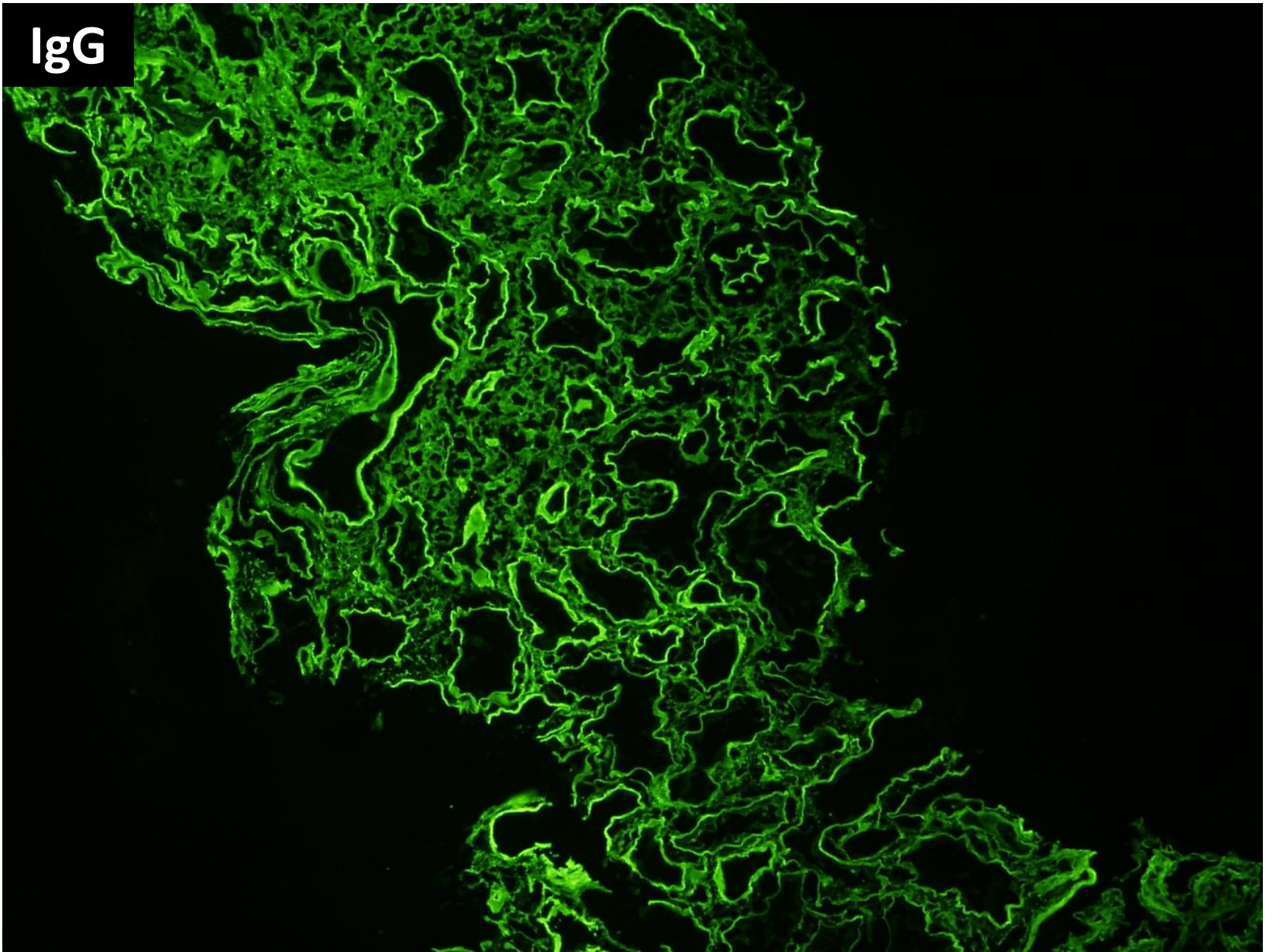




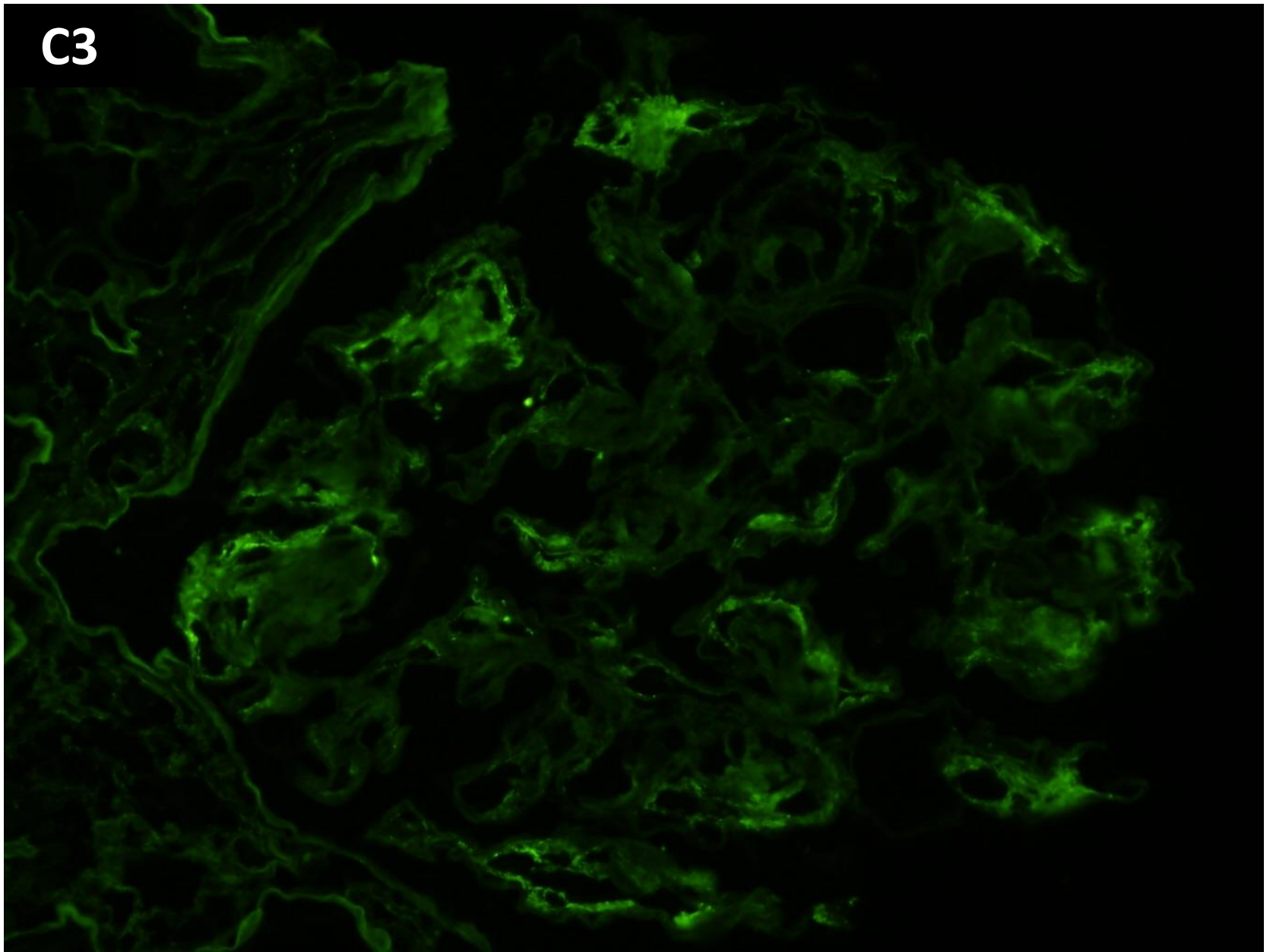
IgG



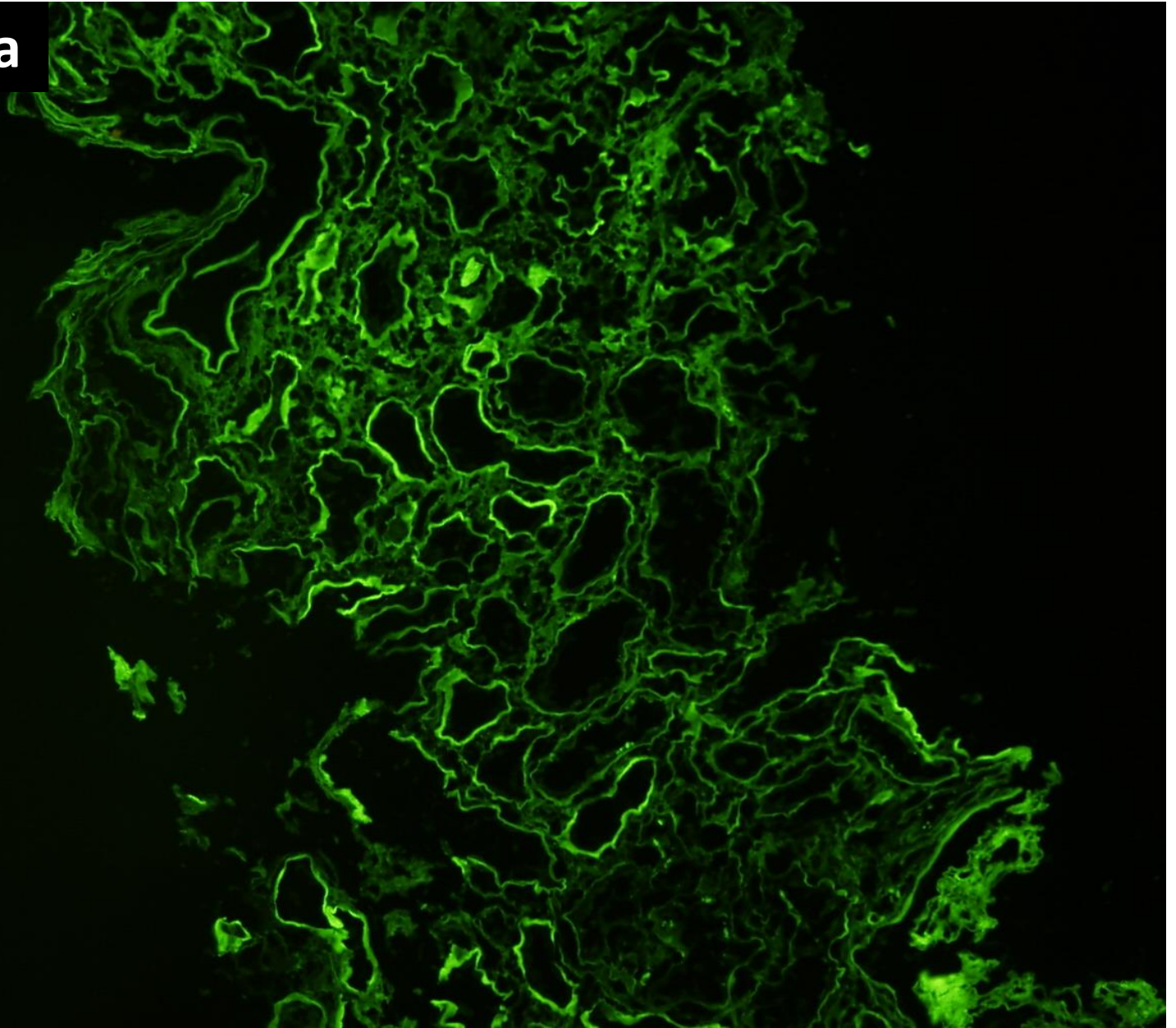
IgG

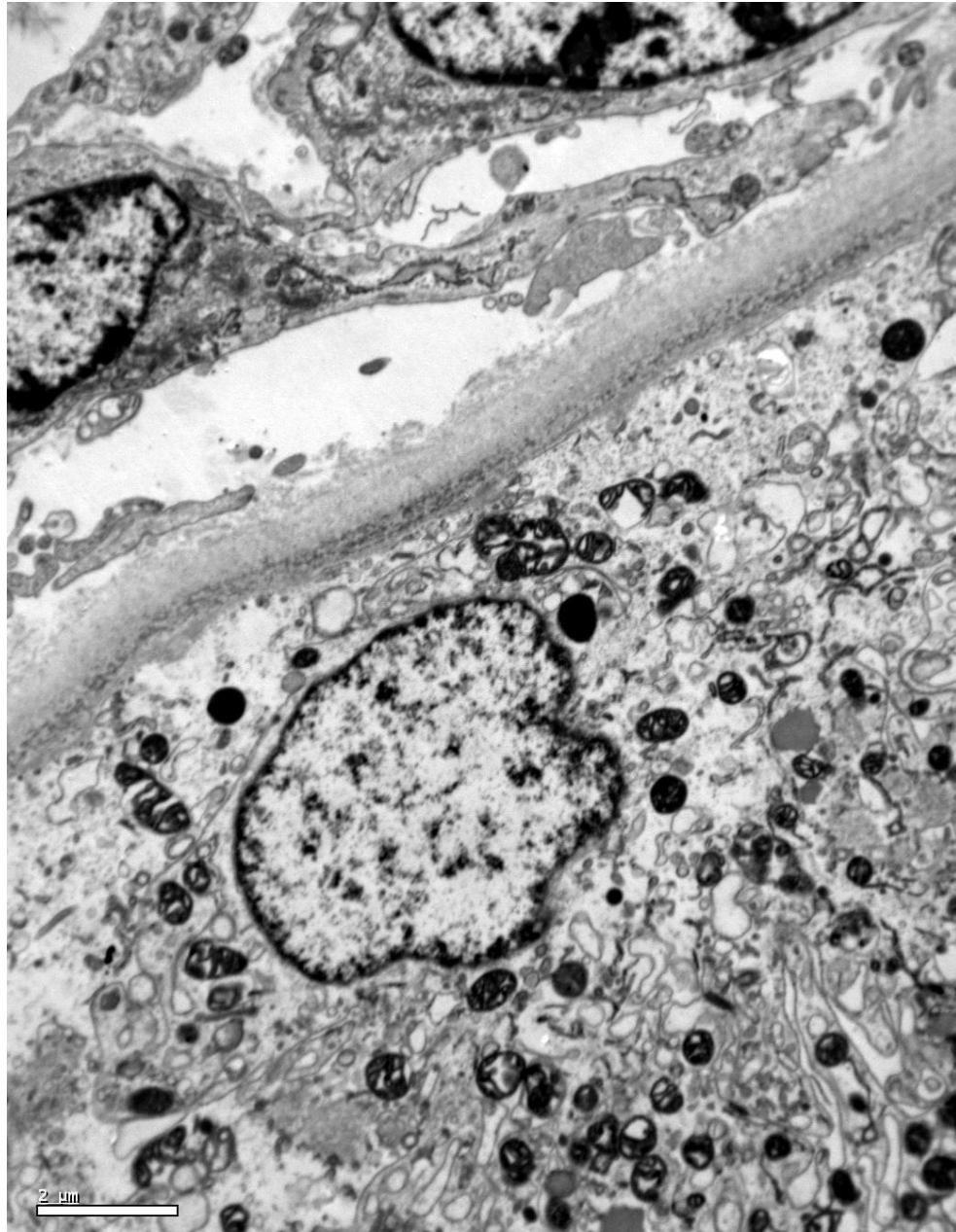


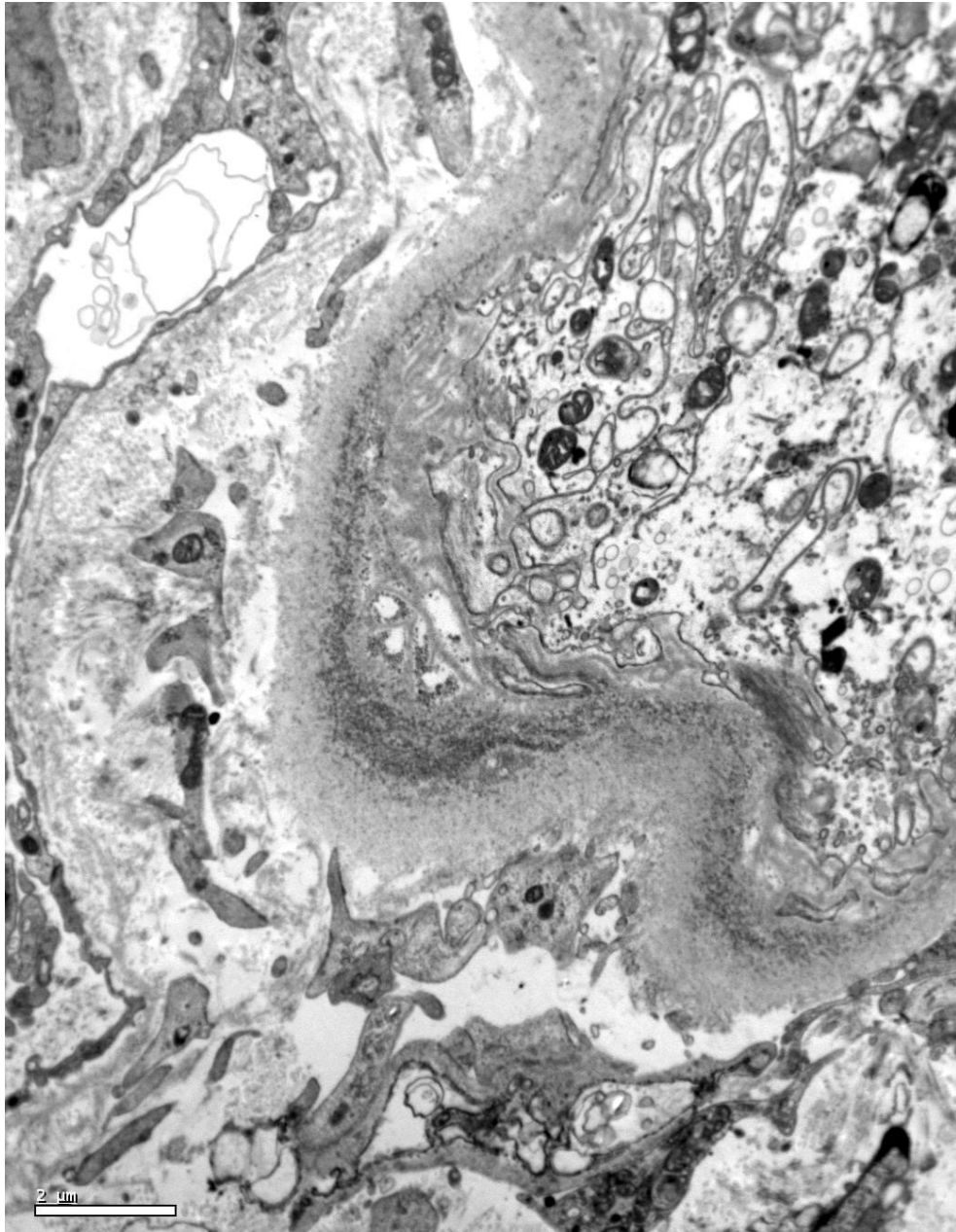
C3

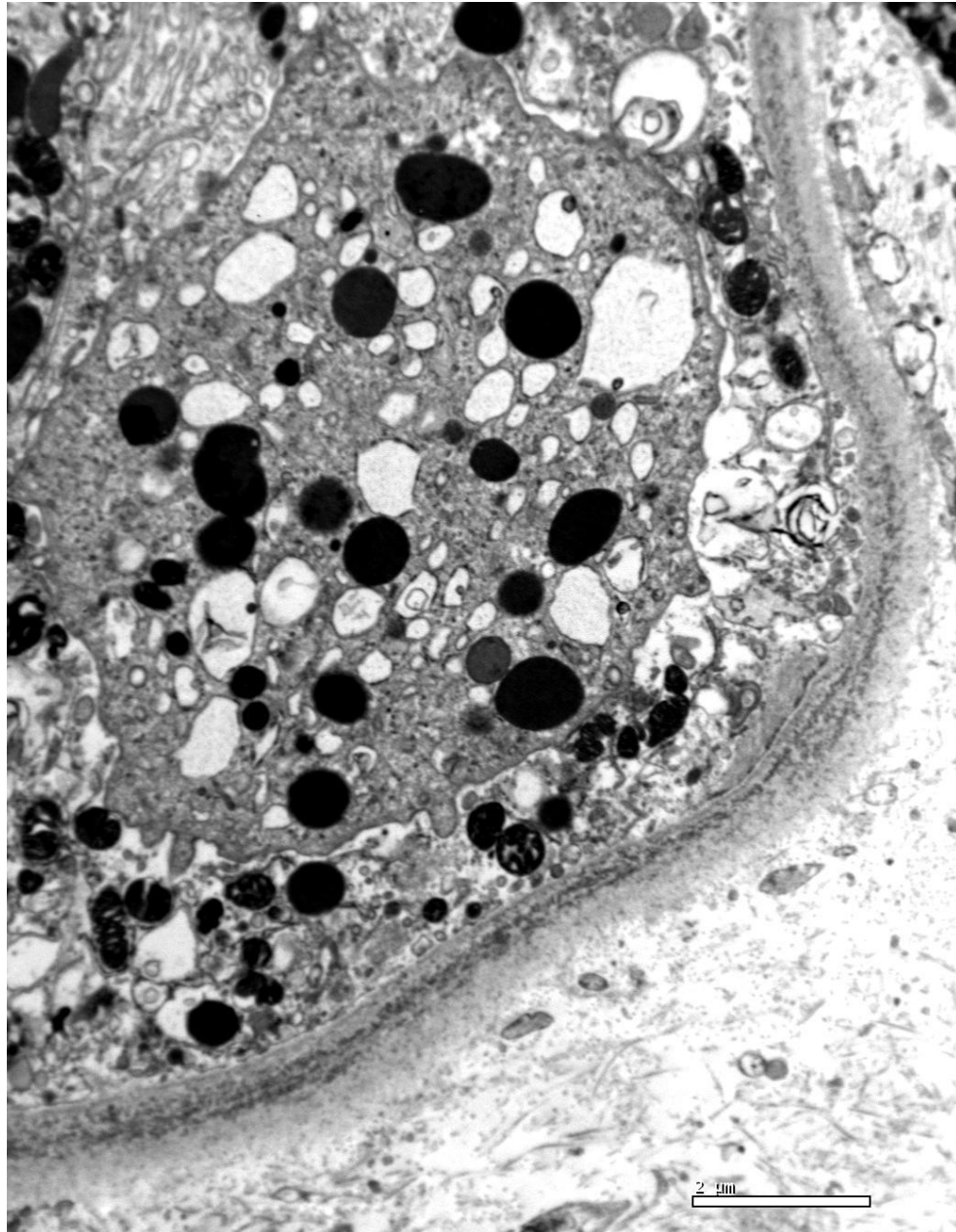


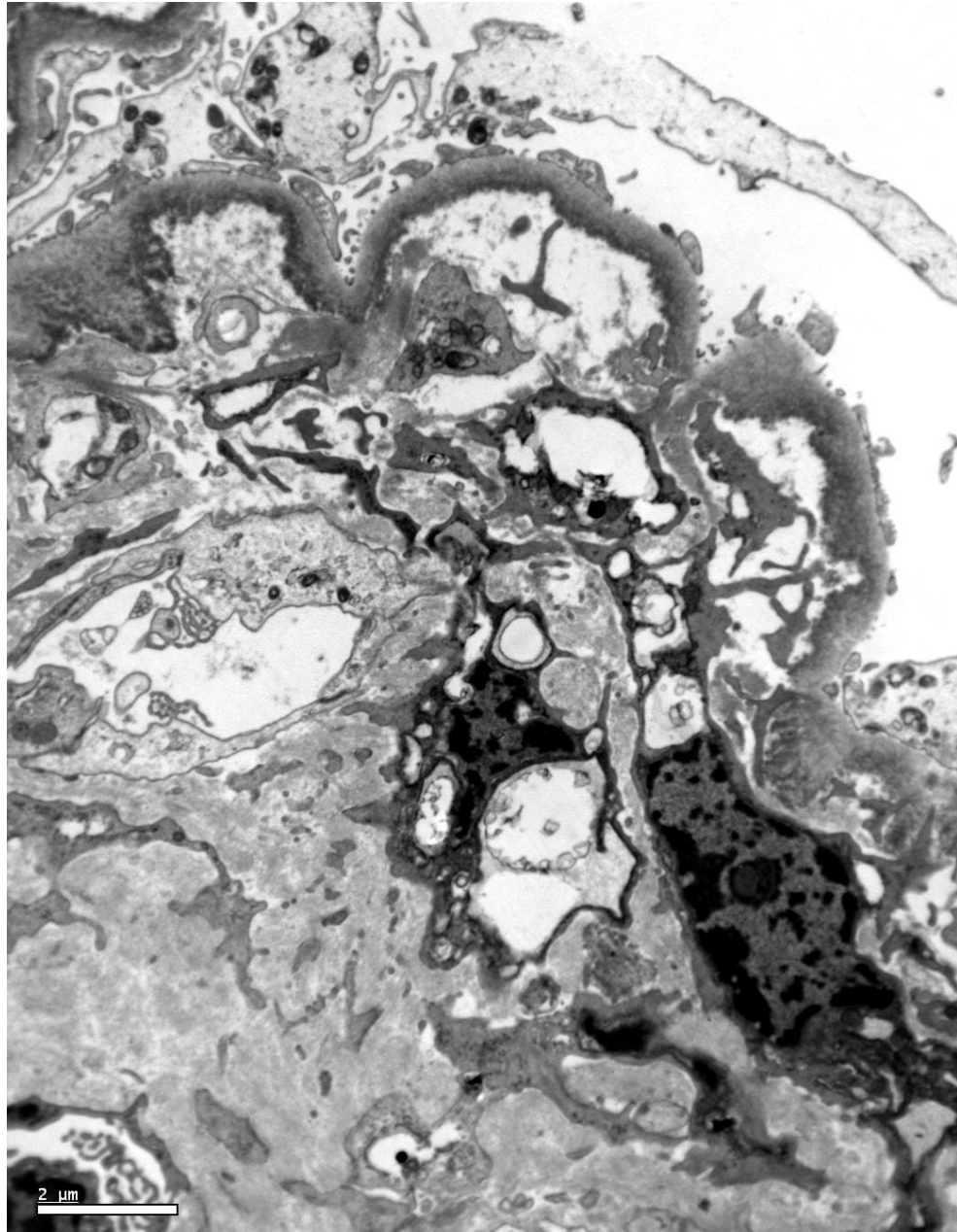
lambda

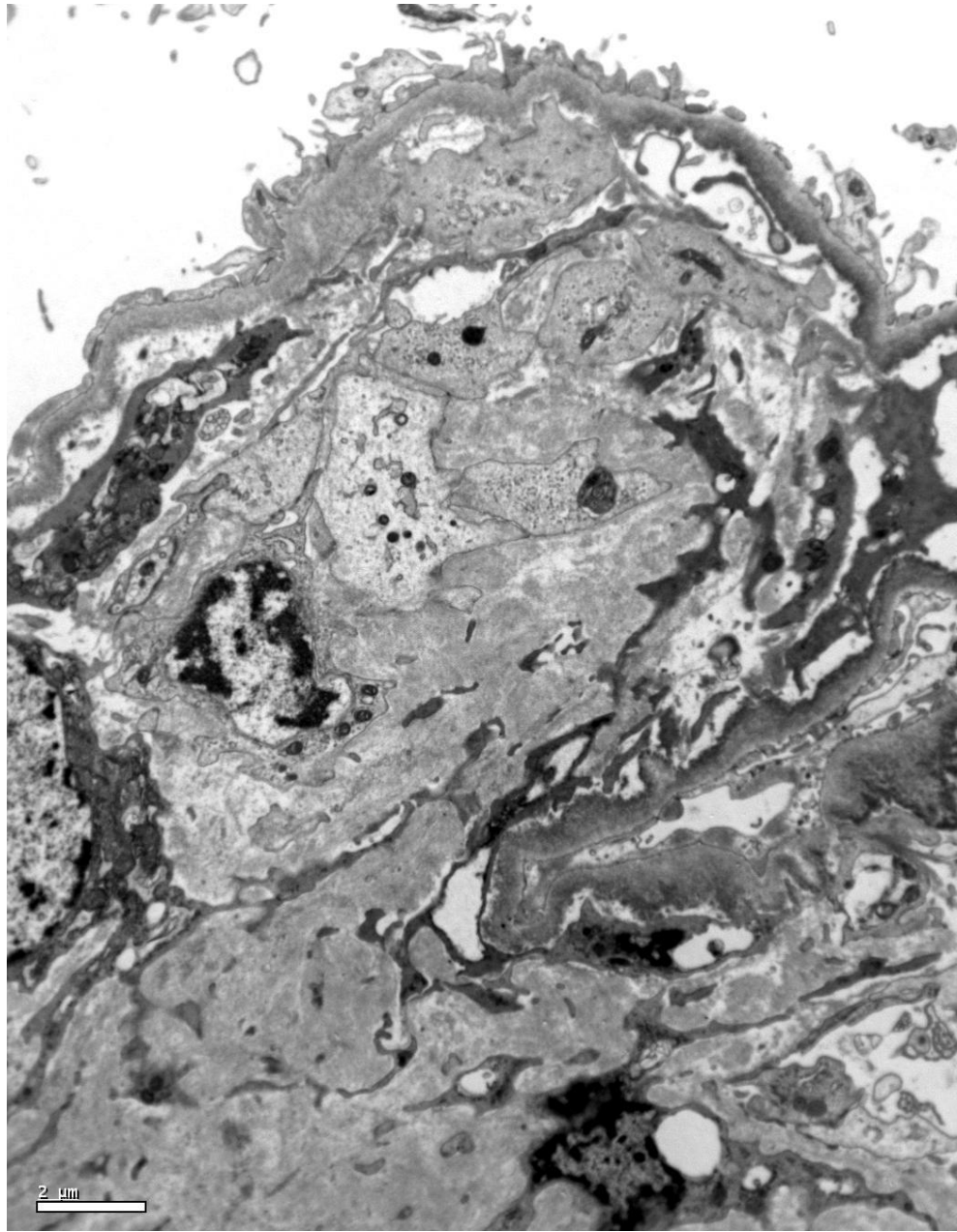


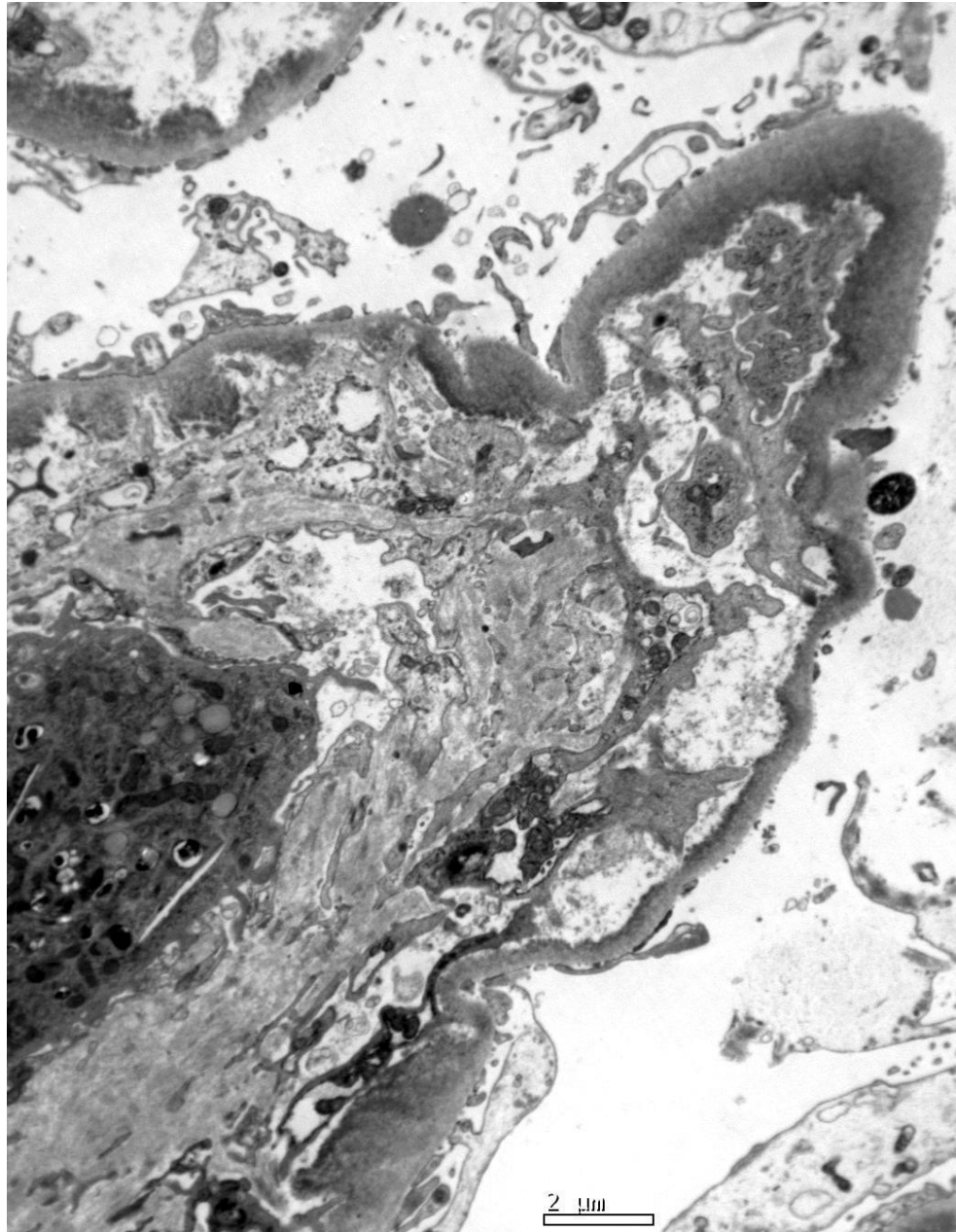


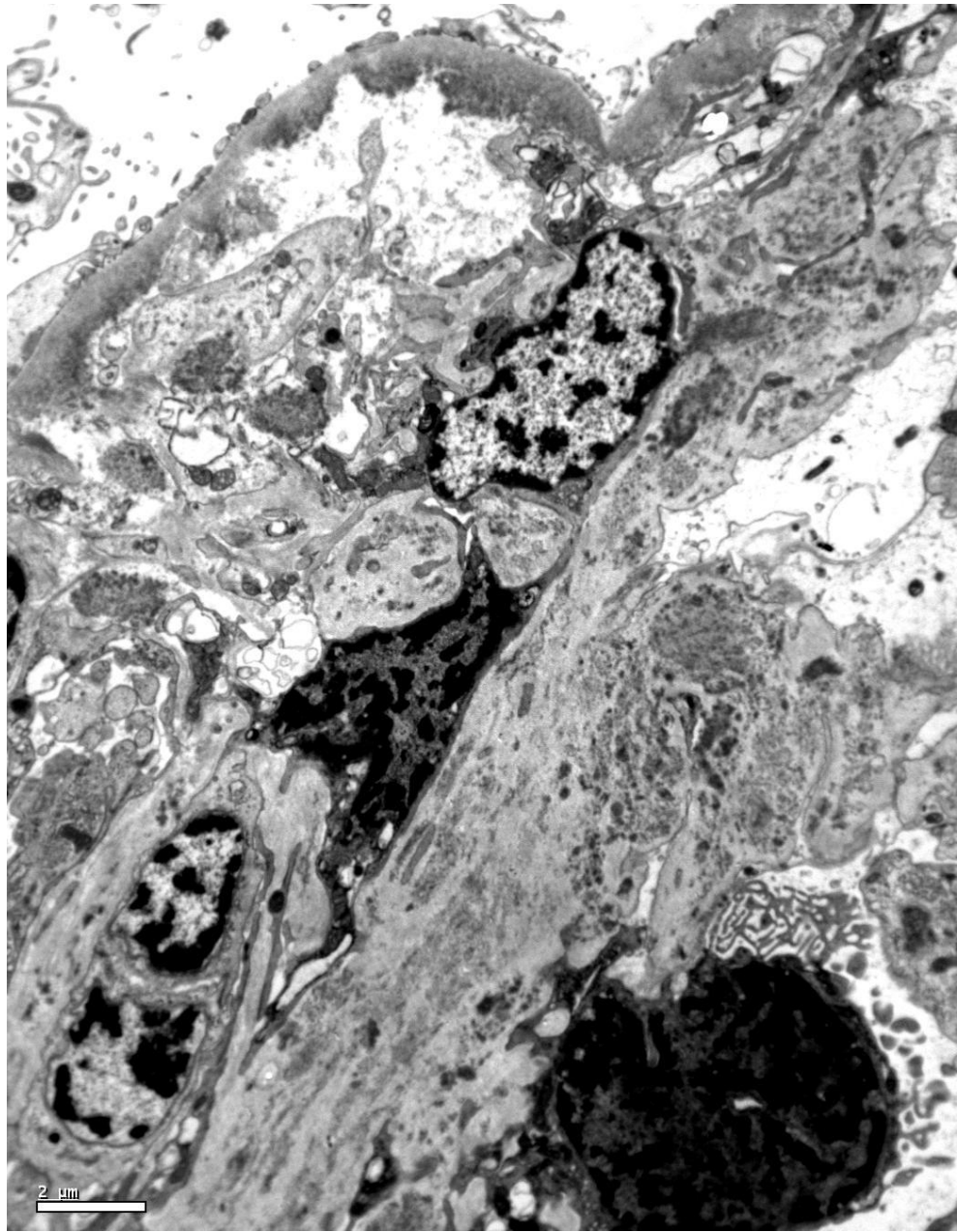


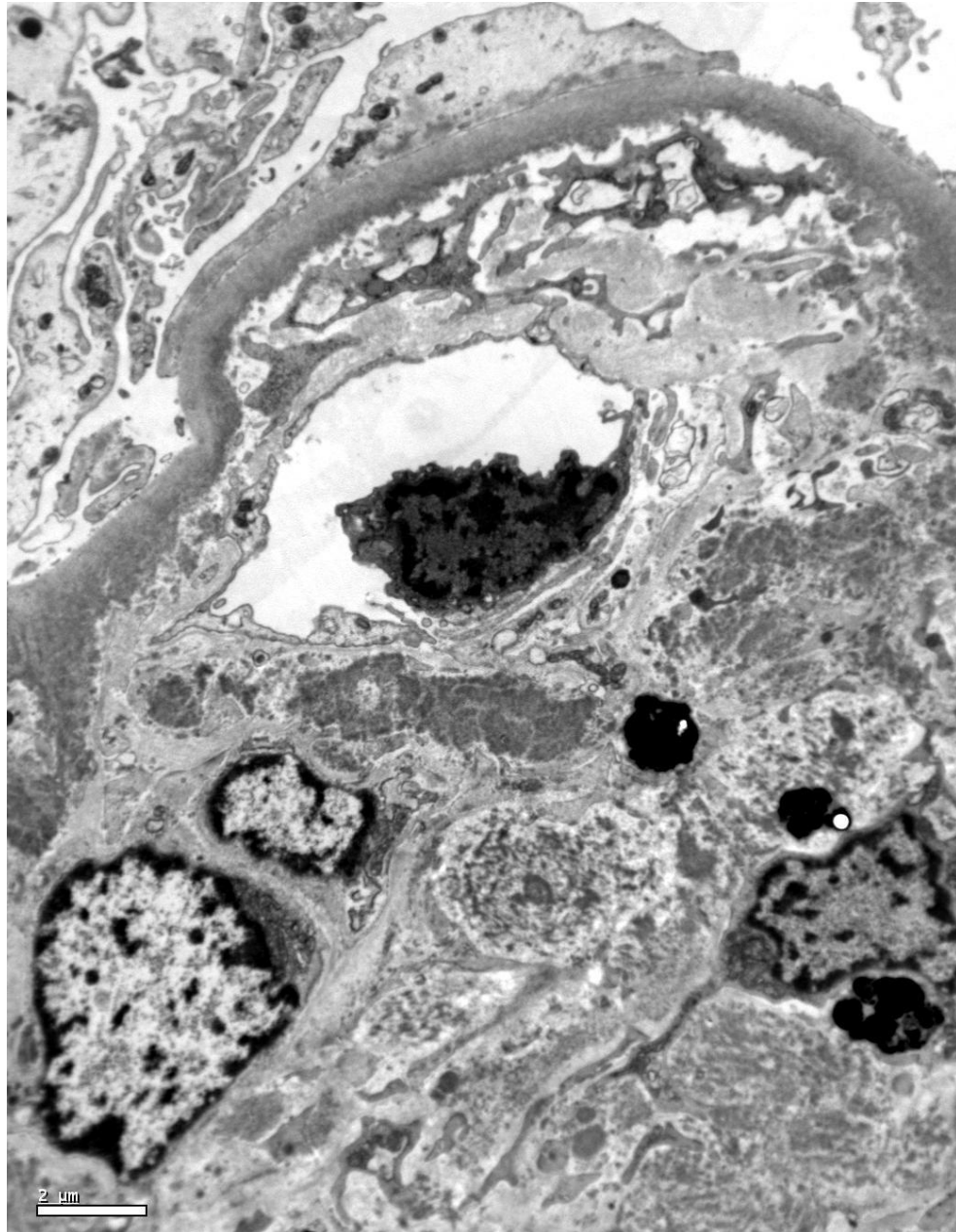


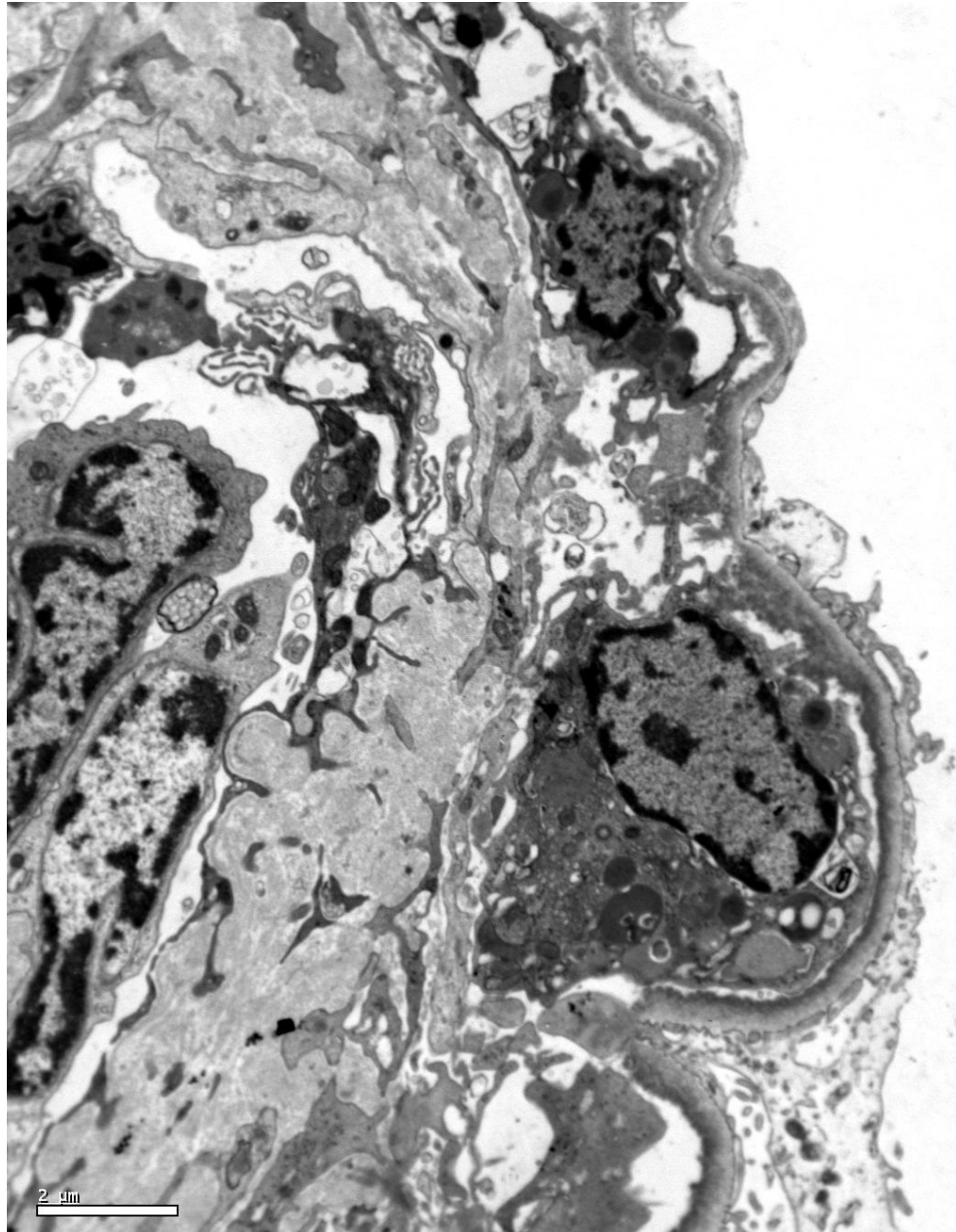














RENAL BIOPSY CLINICOPATHOLOGICAL WORKSHOP 2018



PATHOLOGY



Division of Pathology
Singapore General Hospital



Department of Renal Medicine
Singapore General Hospital



MEDICINE