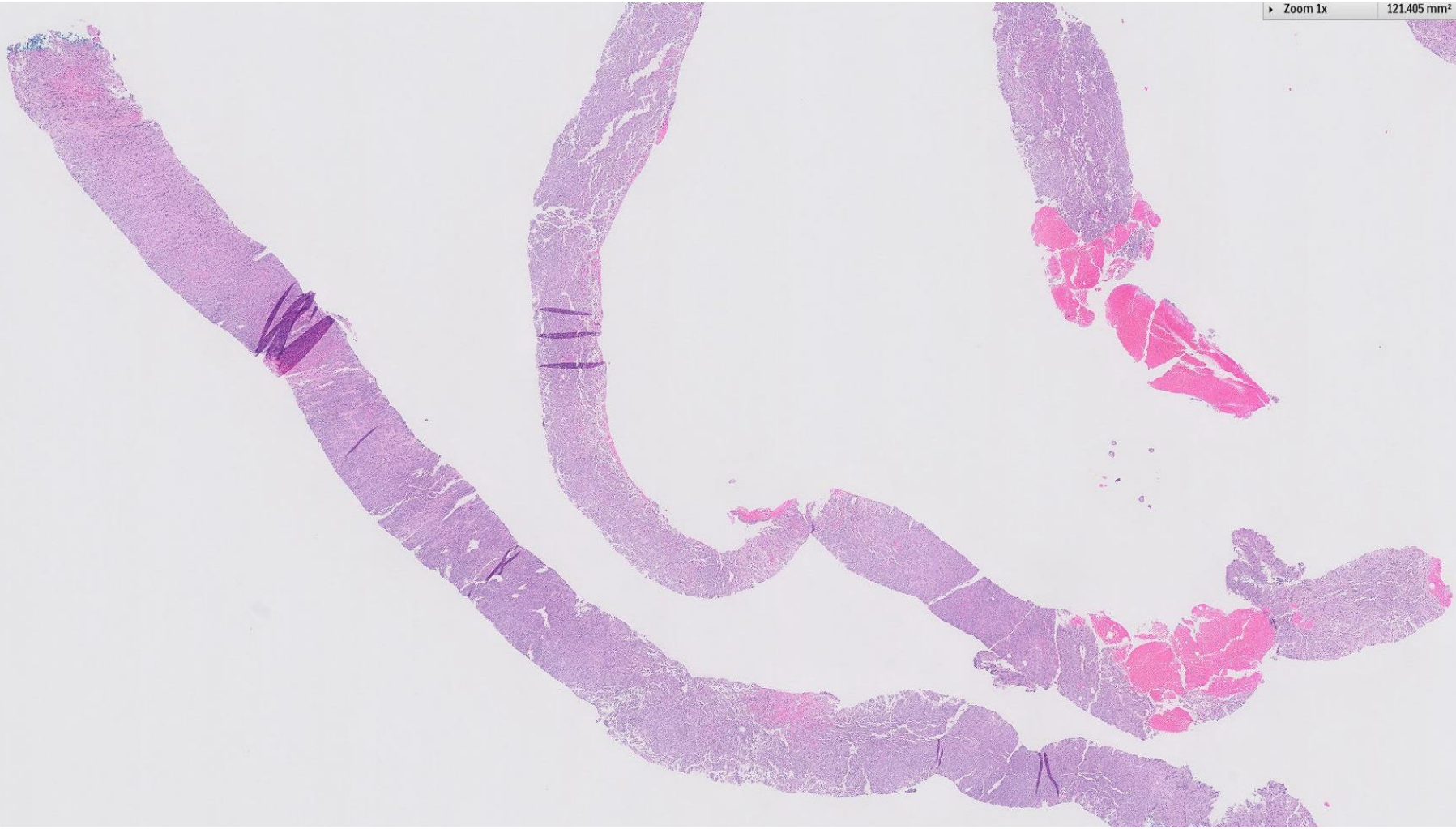
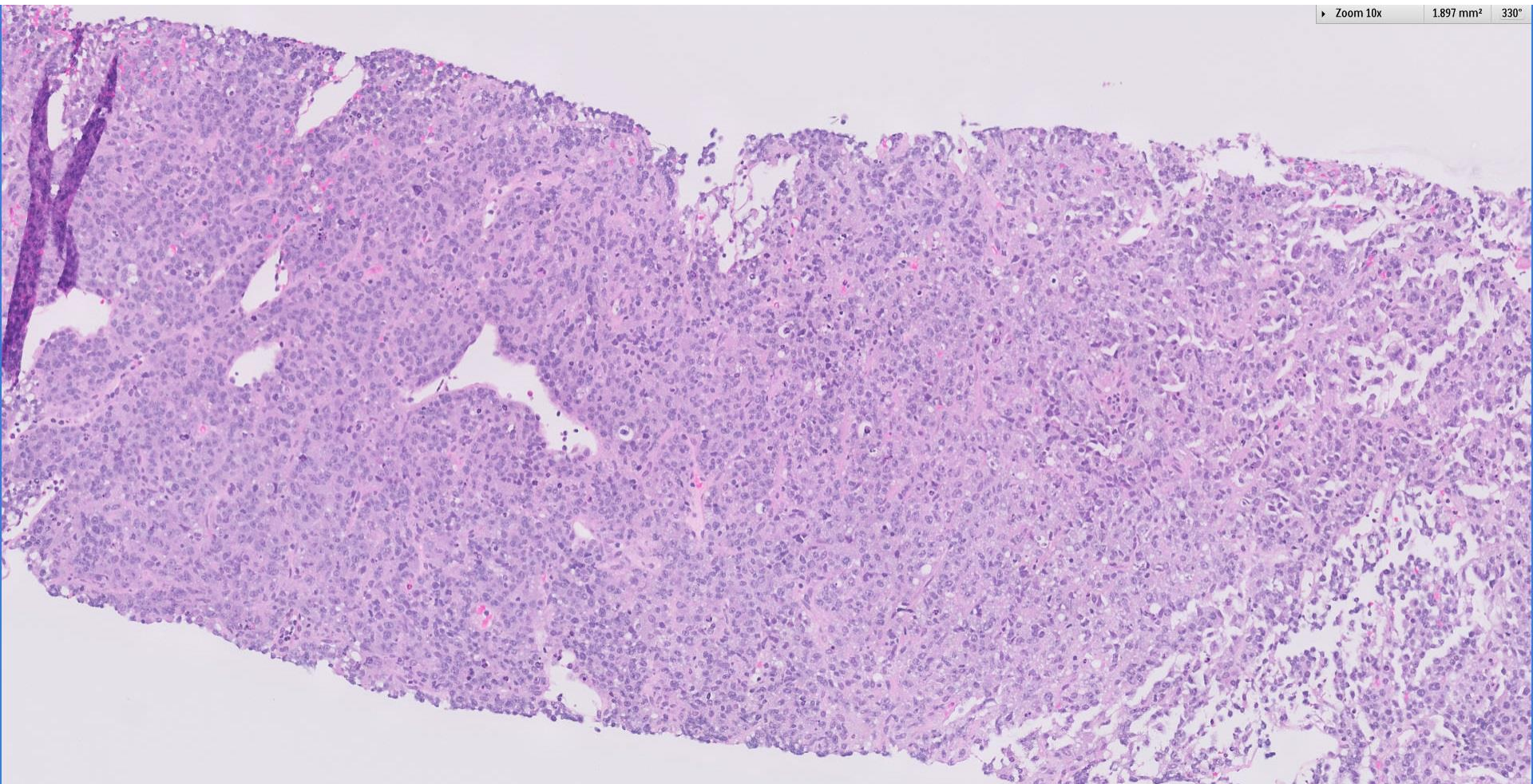
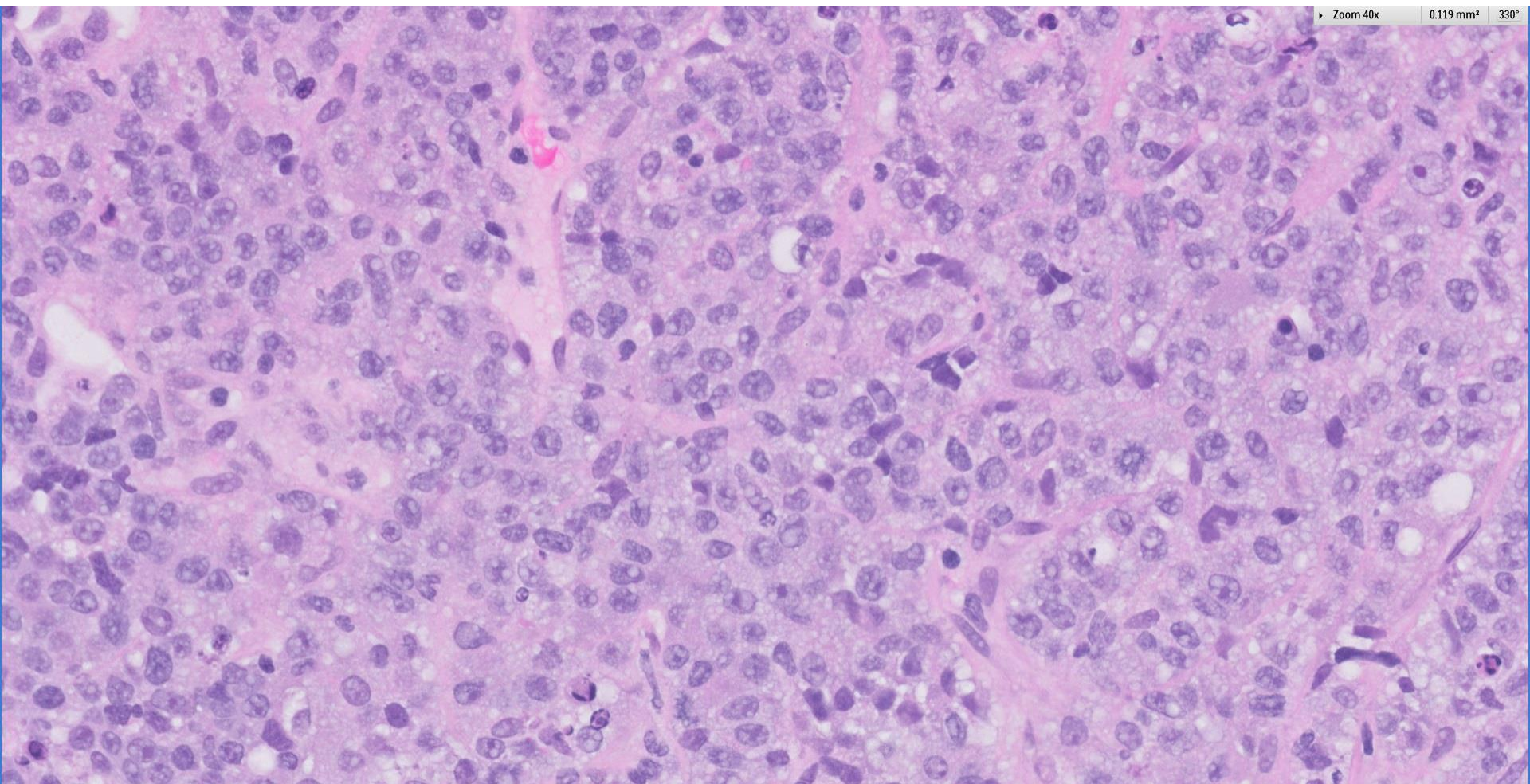


## Case 47

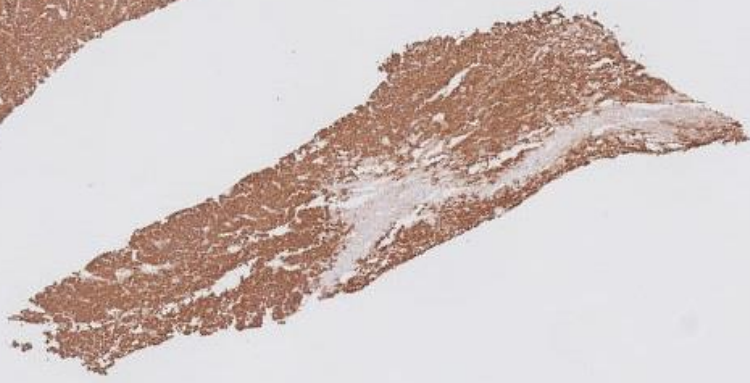
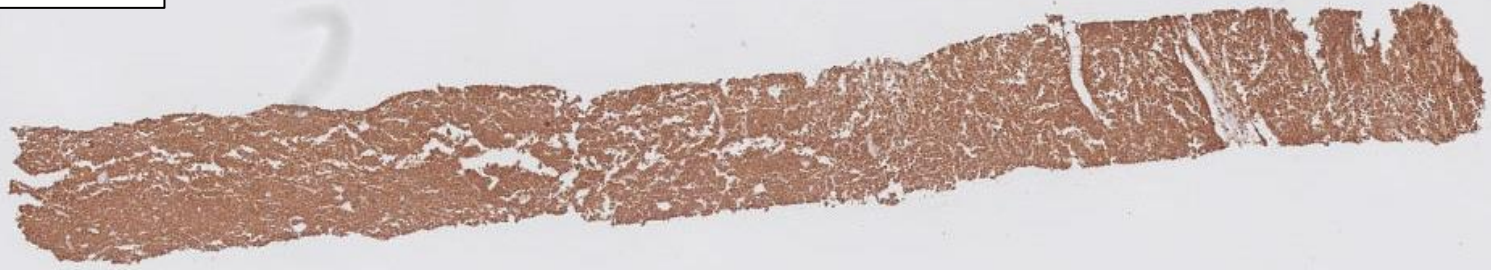
50 year female being evaluated for pyrexia of unknown origin and intra-abdominal lymphadenopathy was found to have UPCR 2.8 g/g.

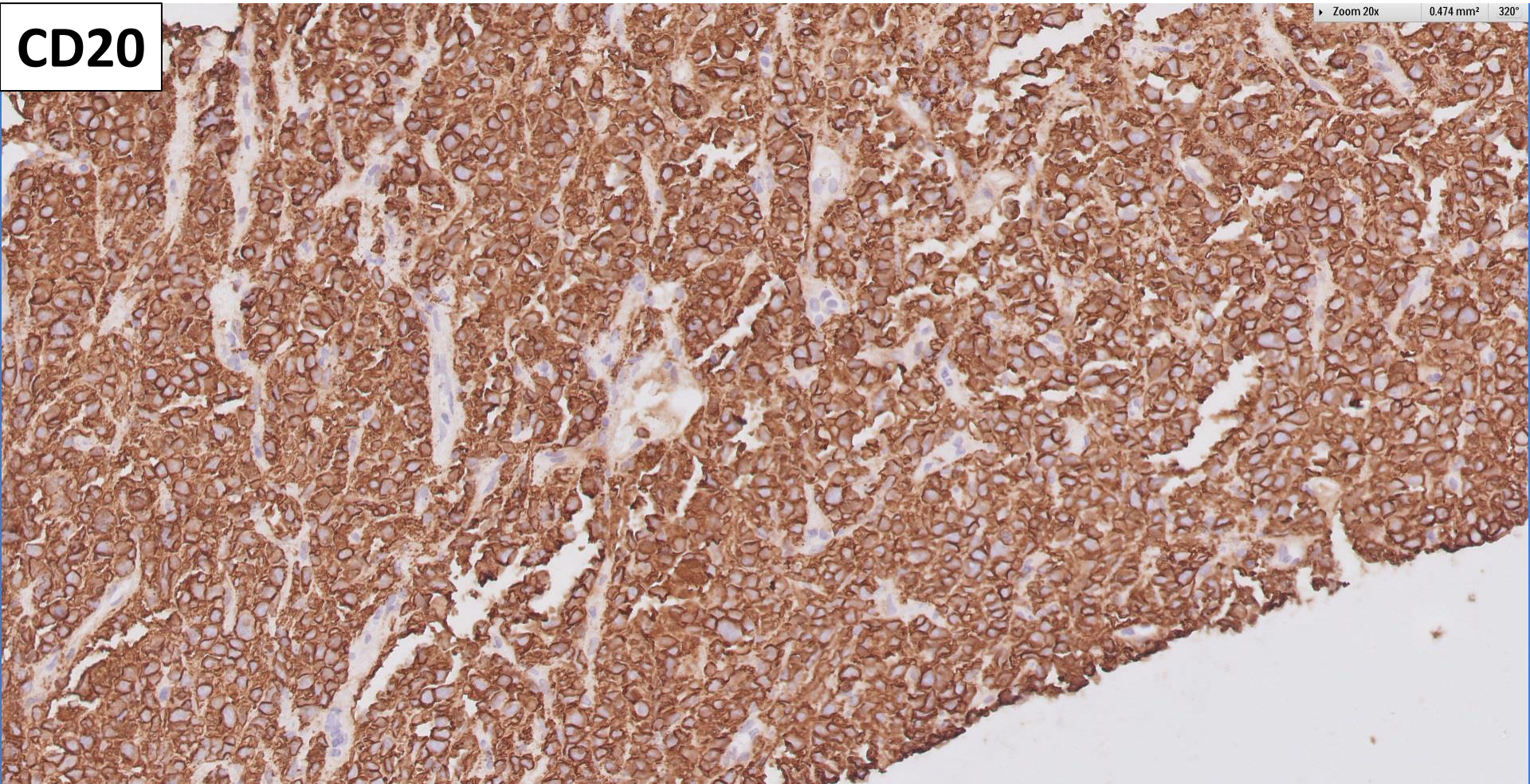






**CD20**



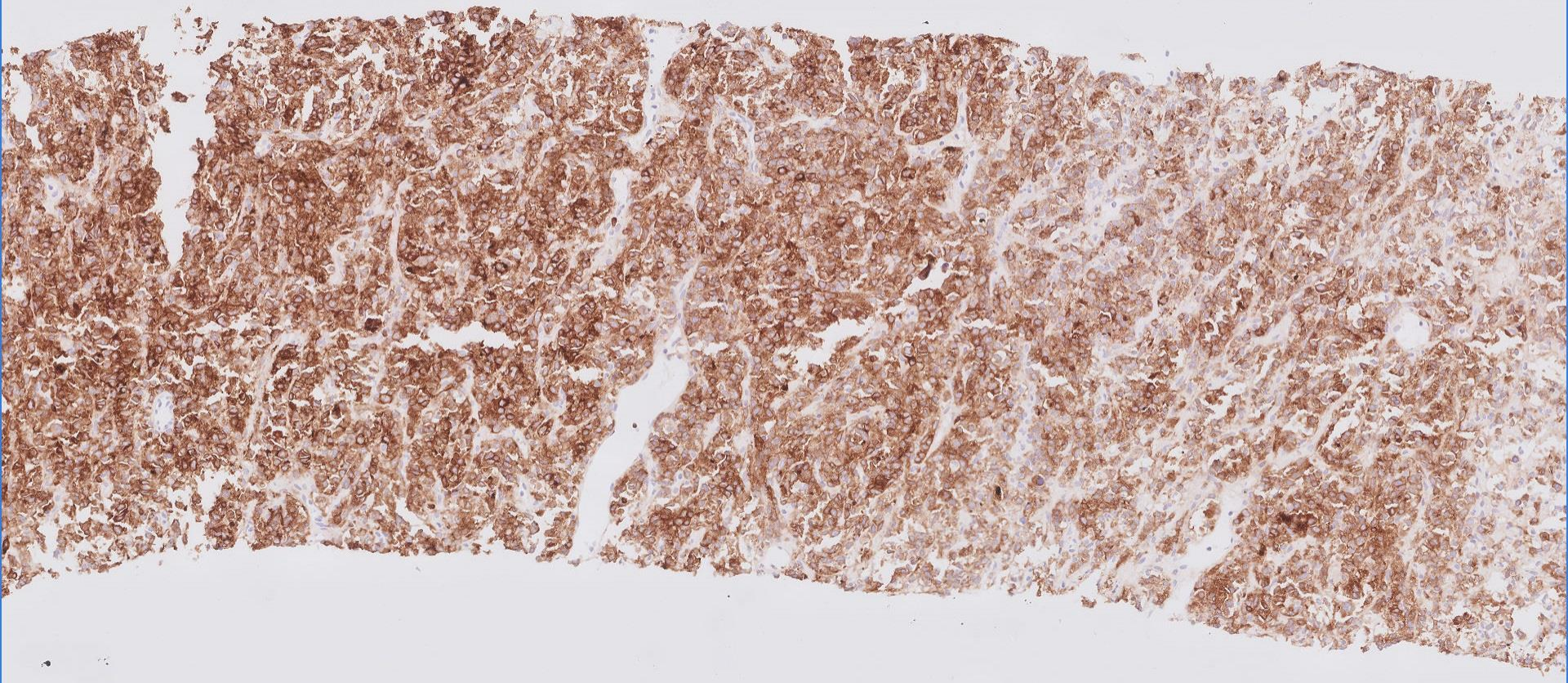


**CD20**

Zoom 20x 0.474 mm<sup>2</sup> 320°

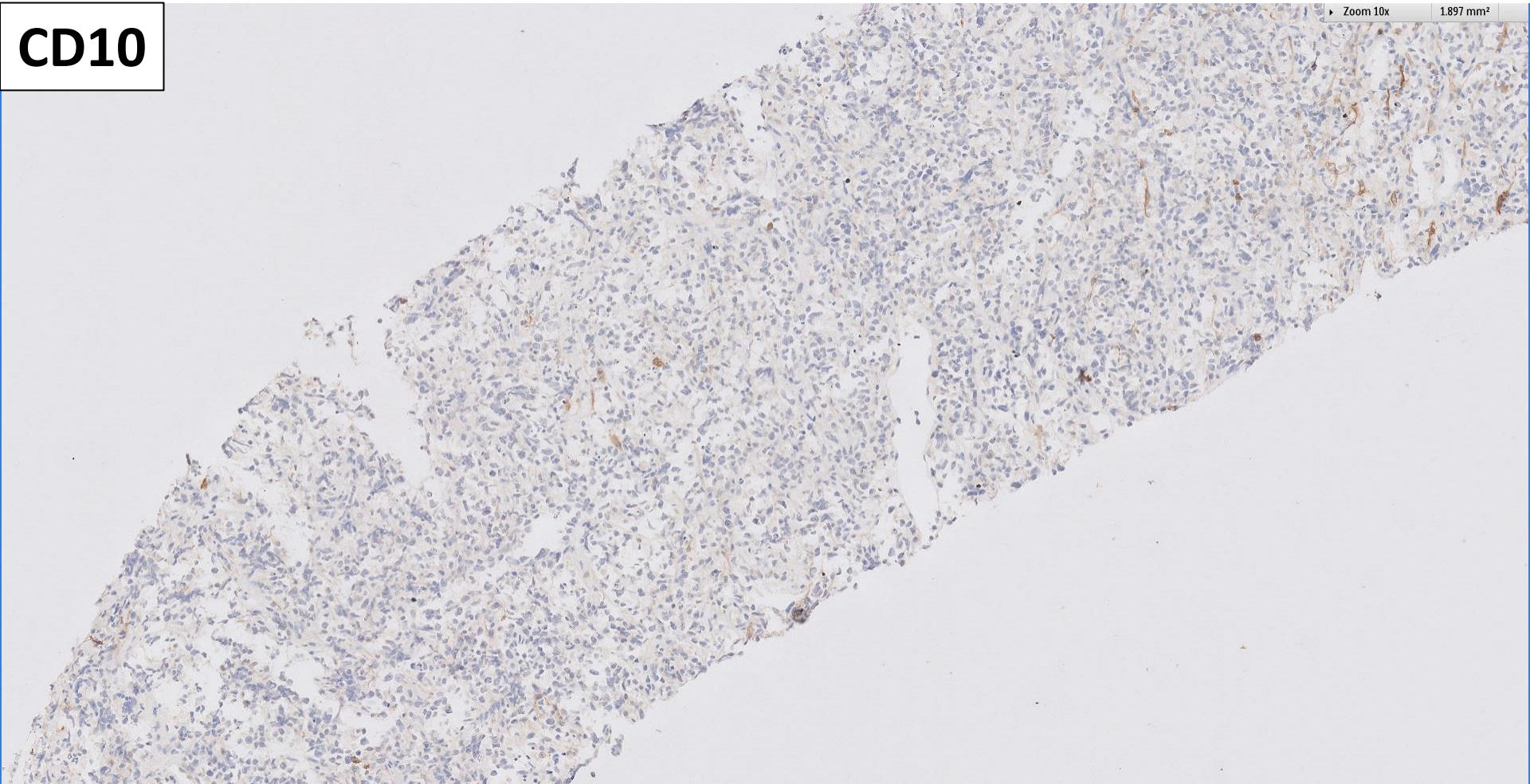
**CD79a**

Zoom 10x 1.897 mm<sup>2</sup> 90°



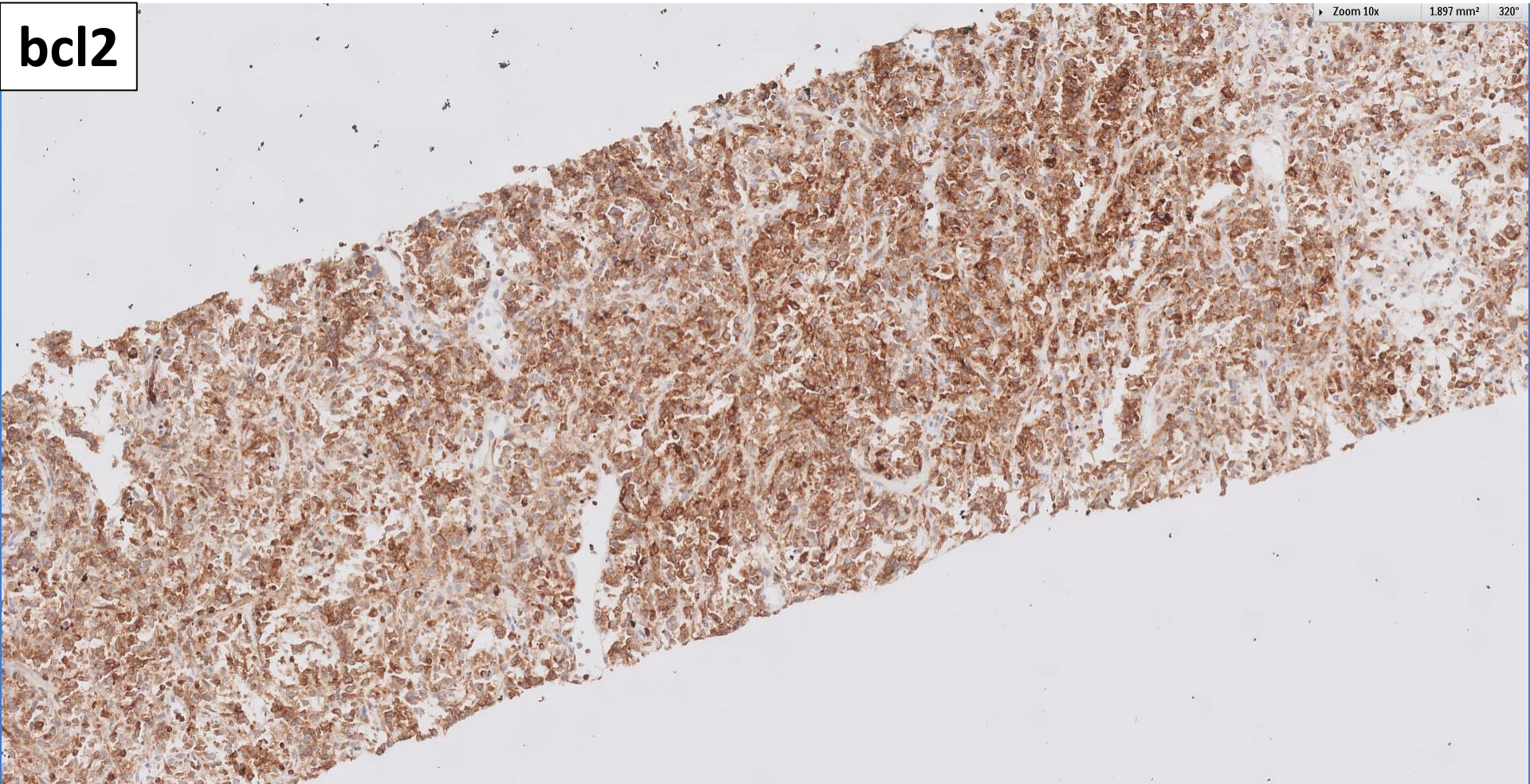
**CD10**

Zoom 10x 1.897 mm<sup>2</sup>



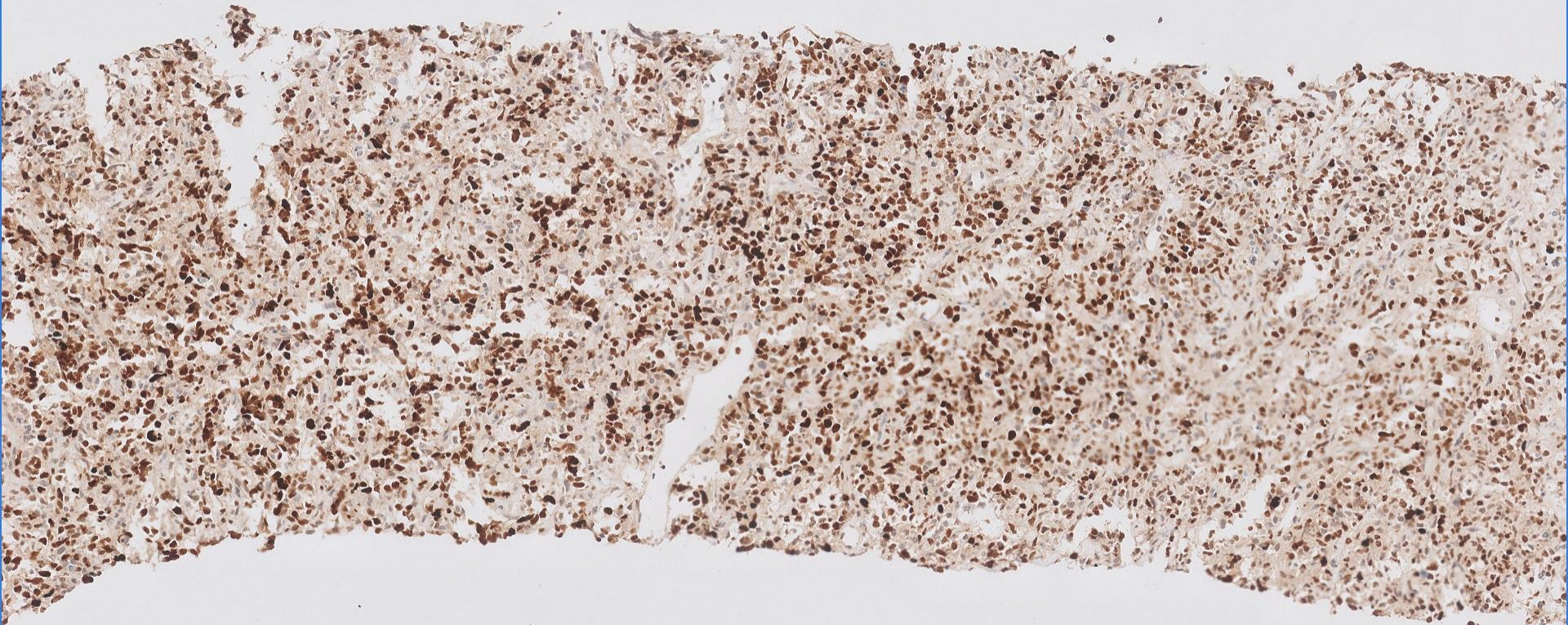


**bcl2**



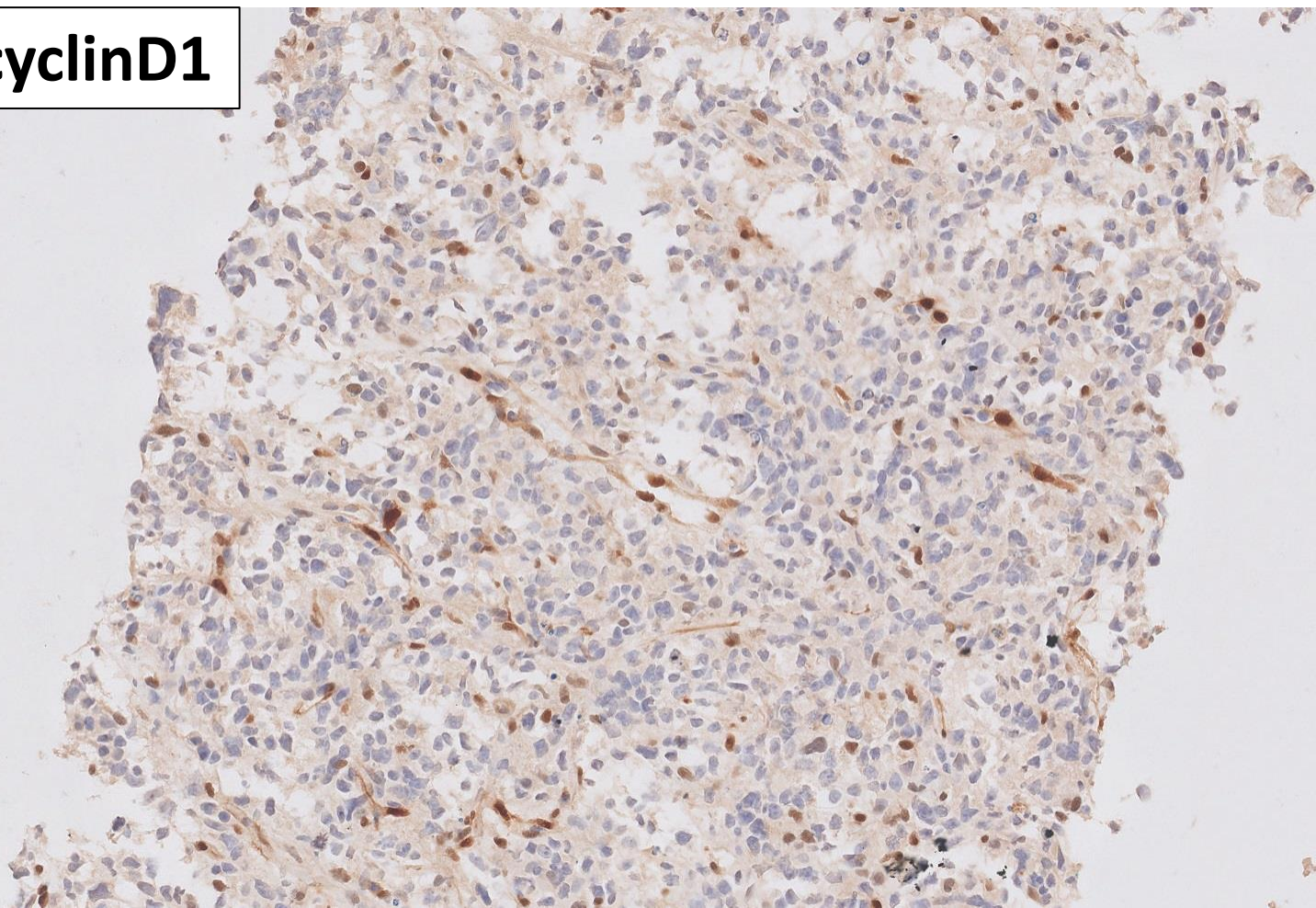
**bcl8**

Zoom 10x 1.897 mm<sup>2</sup>

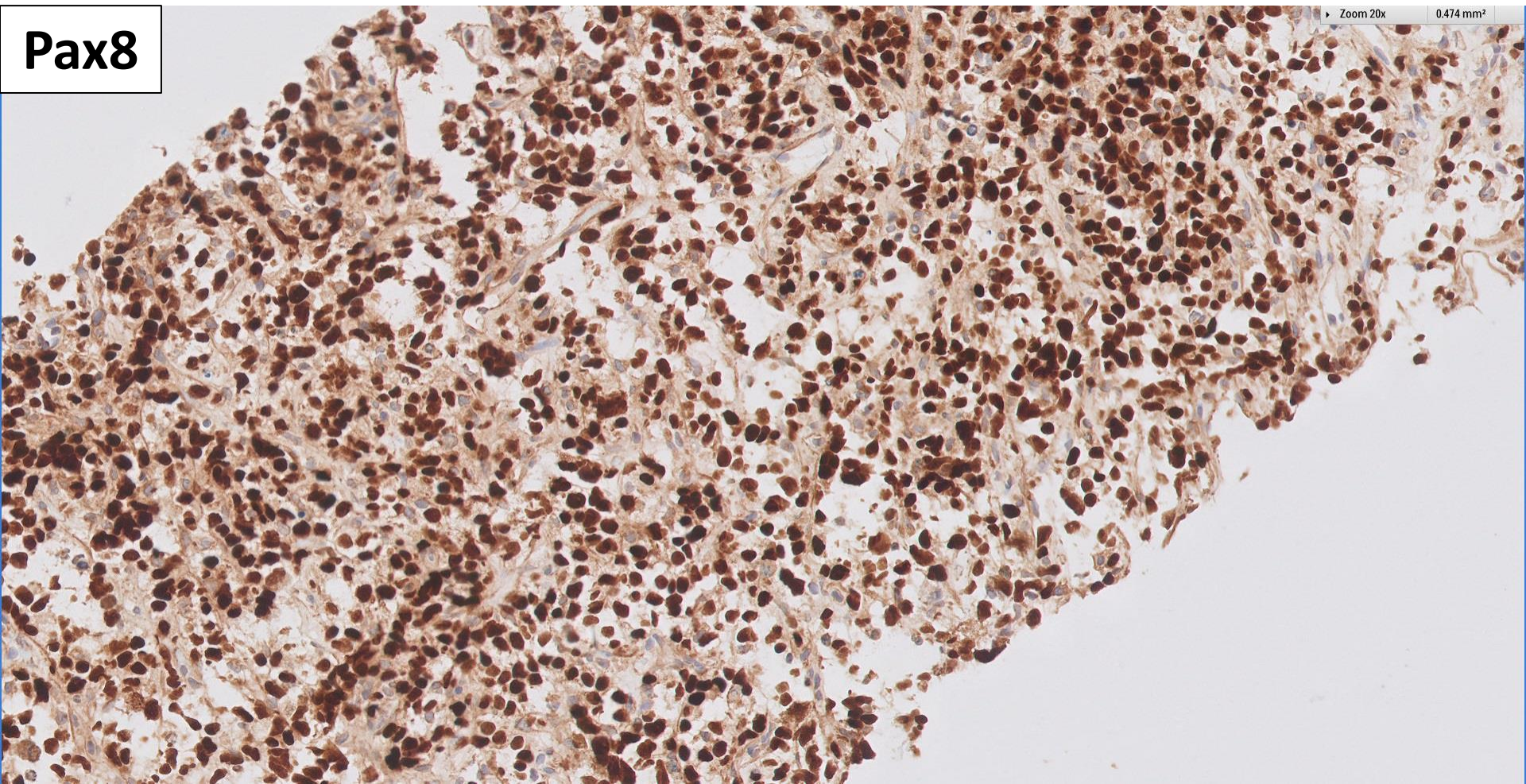


**cyclinD1**

Zoom 20x 0.474 mm<sup>2</sup>

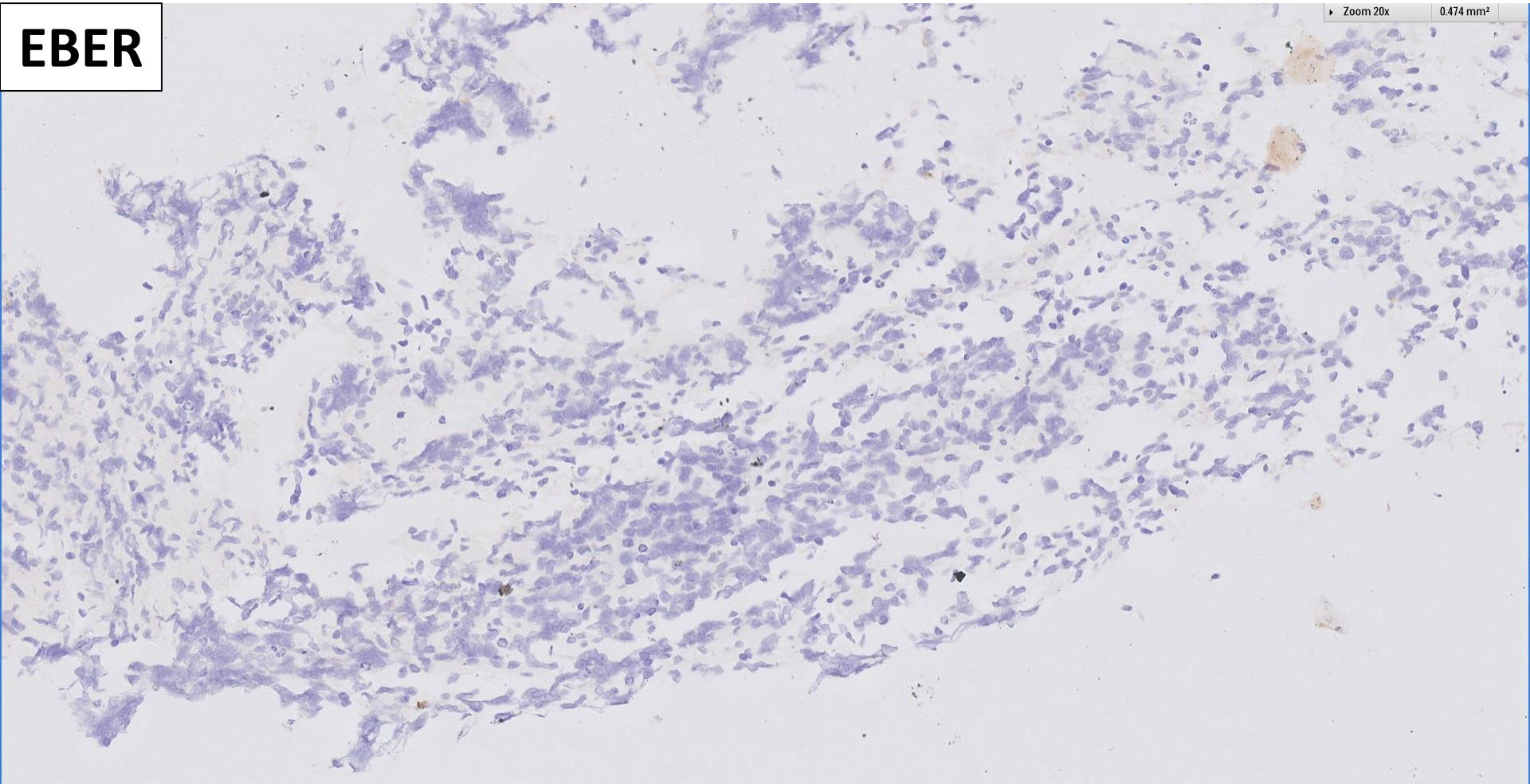


**Pax8**



**EBER**

Zoom 20x 0.474 mm<sup>2</sup>





# RENAL BIOPSY CLINICOPATHOLOGICAL WORKSHOP 2018



**PATHOLOGY**



Division of Pathology  
Singapore General Hospital



Department of Renal Medicine  
Singapore General Hospital



**MEDICINE**