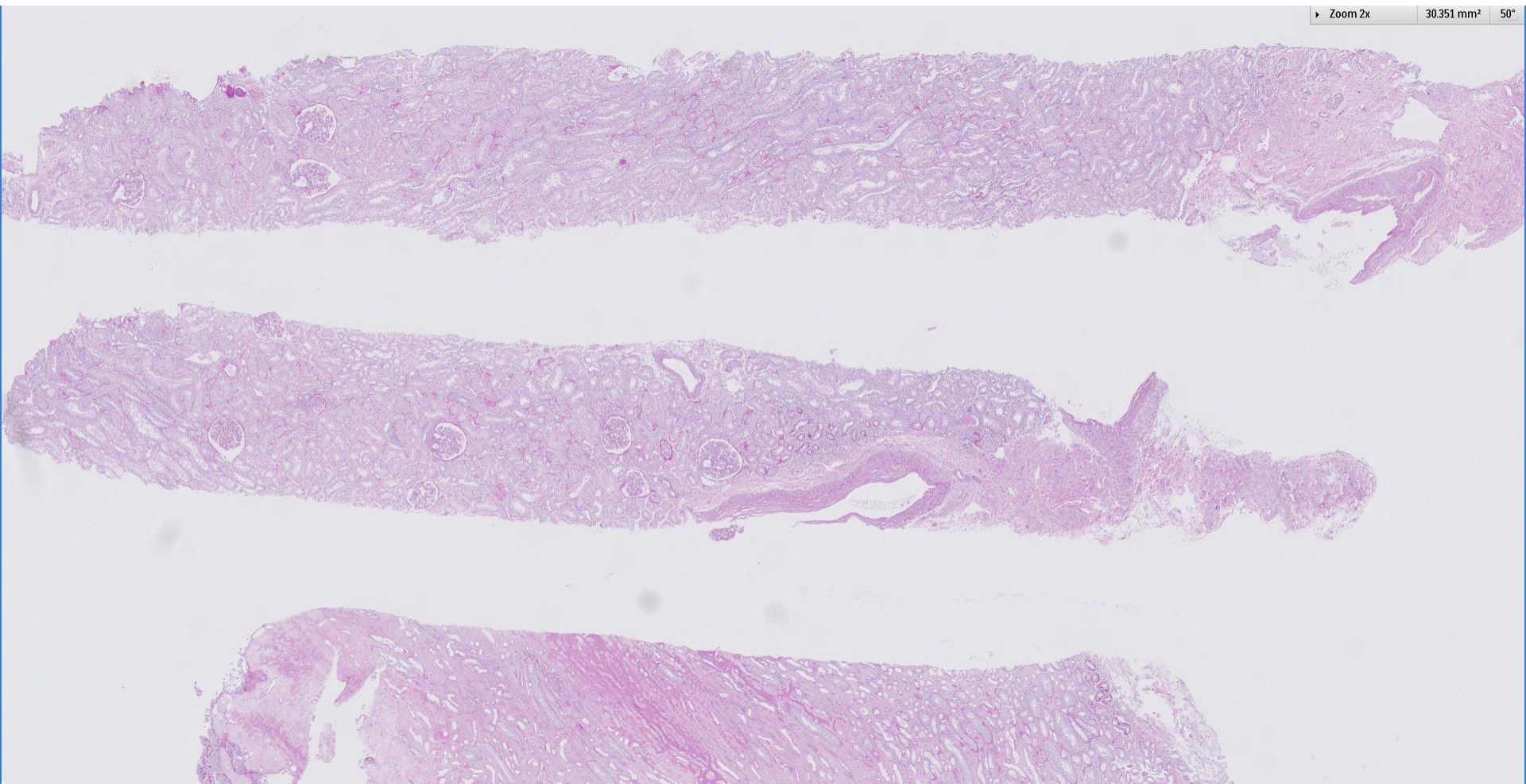
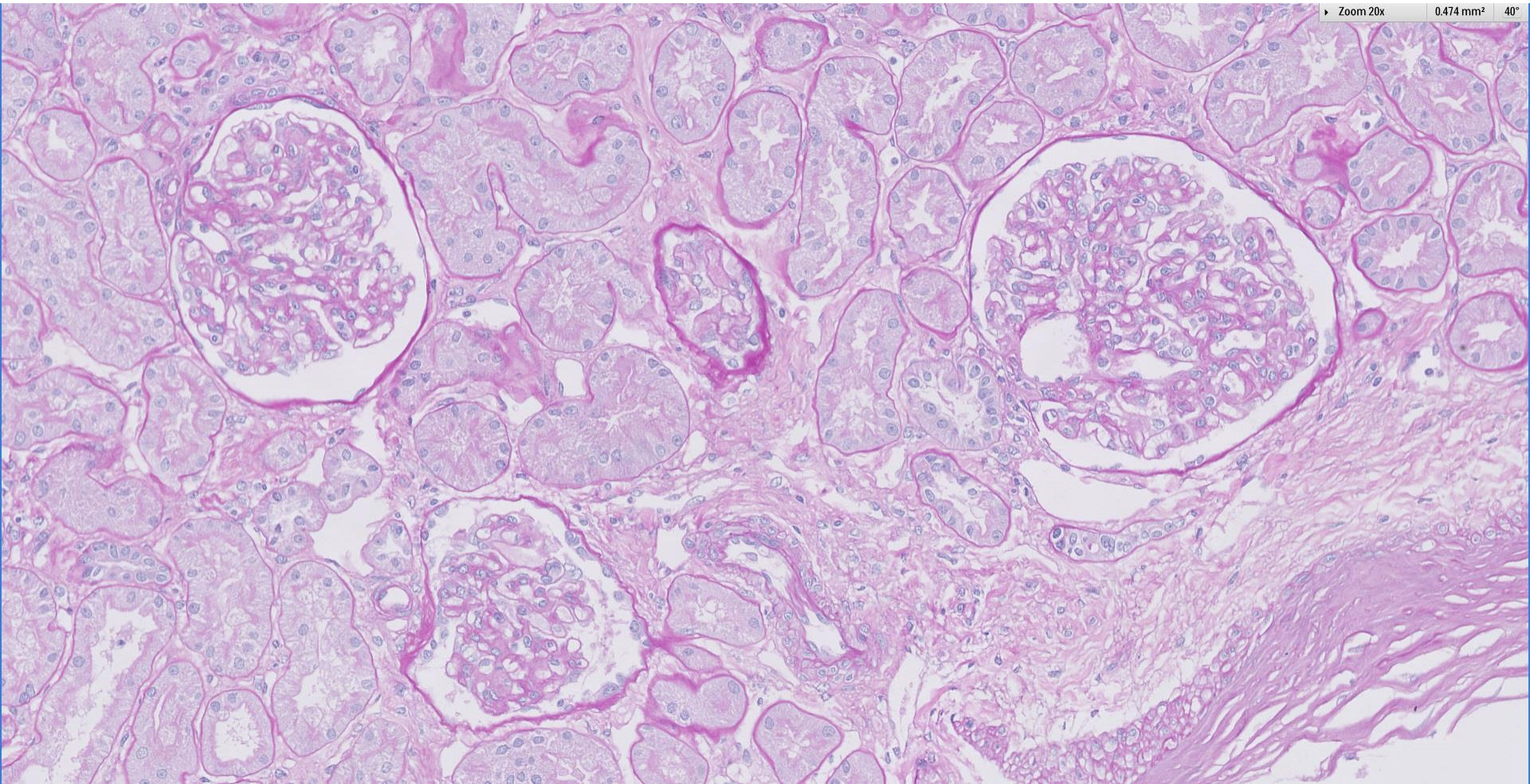
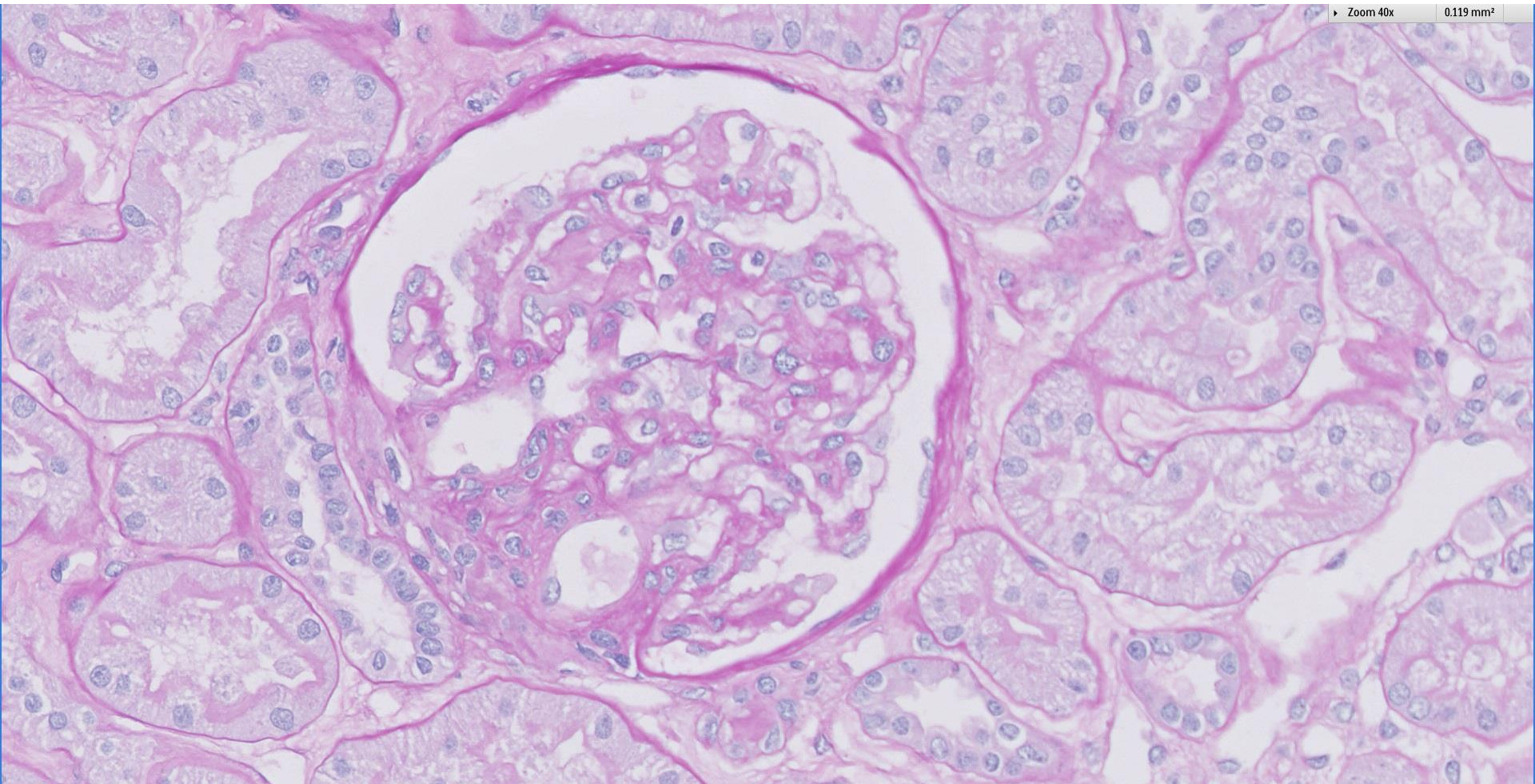


Case 46

68 year old female diagnosed with proteinuria TUP 2.8 g/24hours and normal renal function. Autoimmune and virology markers are negative.

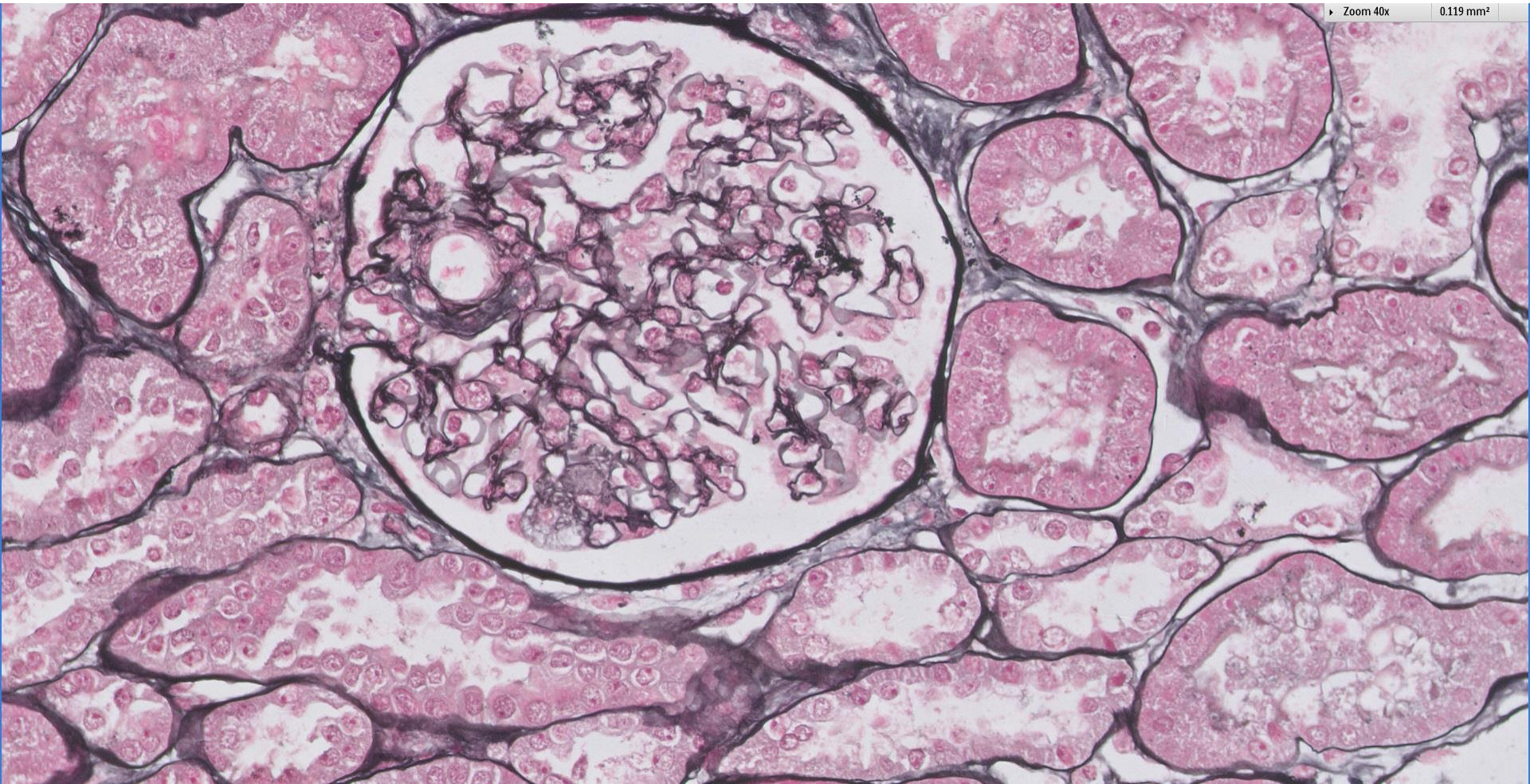






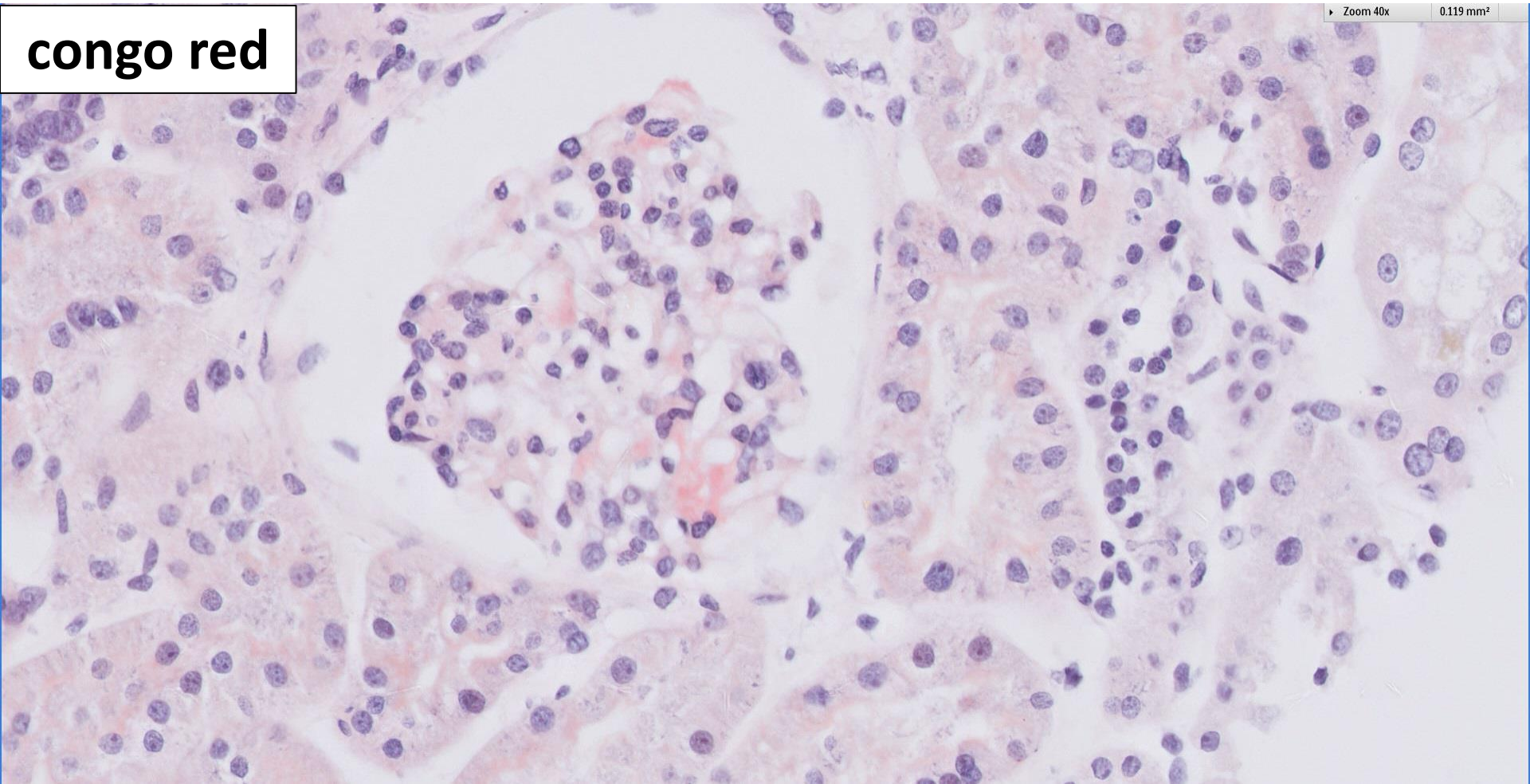
Zoom 40x

0.119 mm²



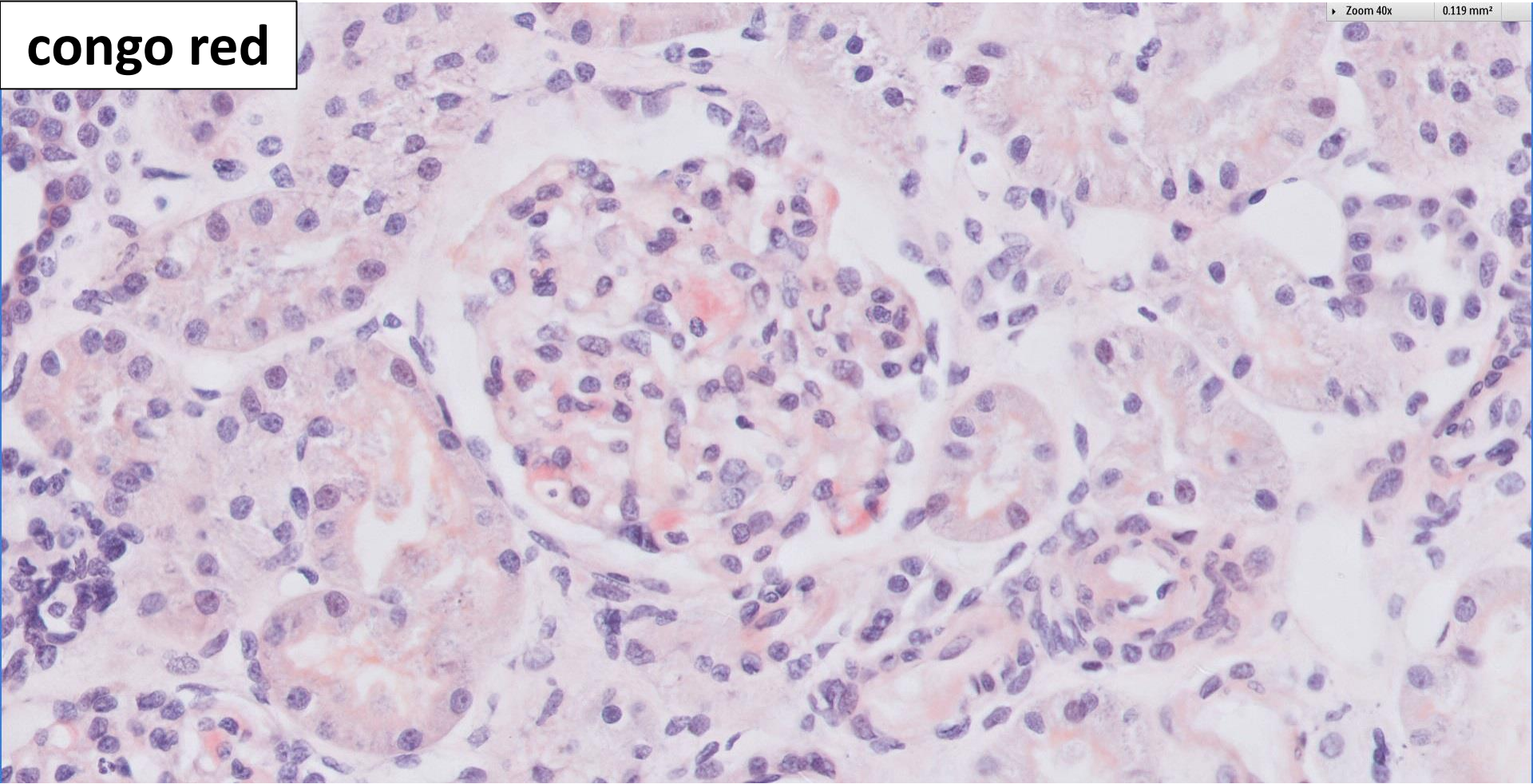
congo red

Zoom 40x 0.119 mm²

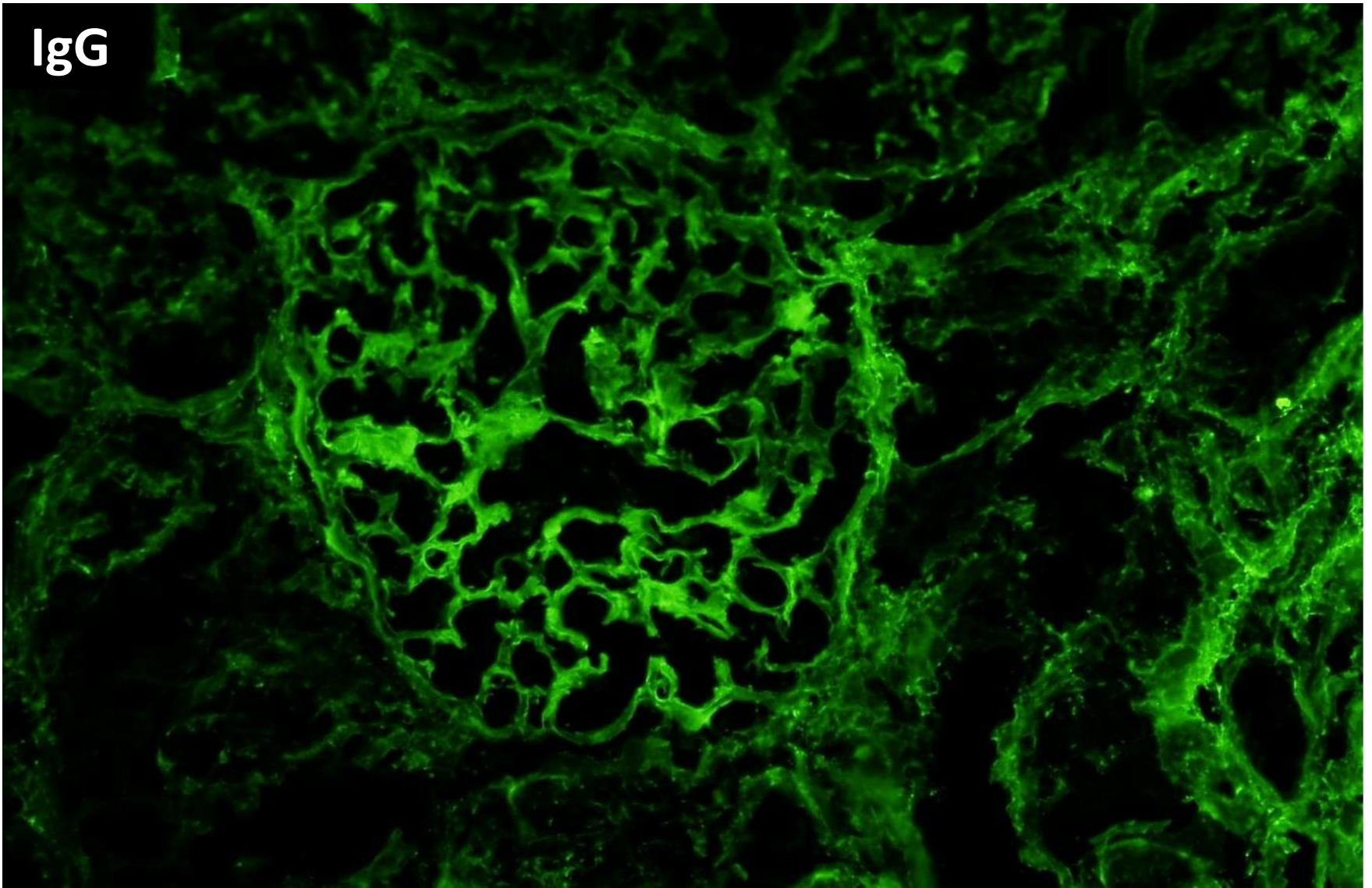


congo red

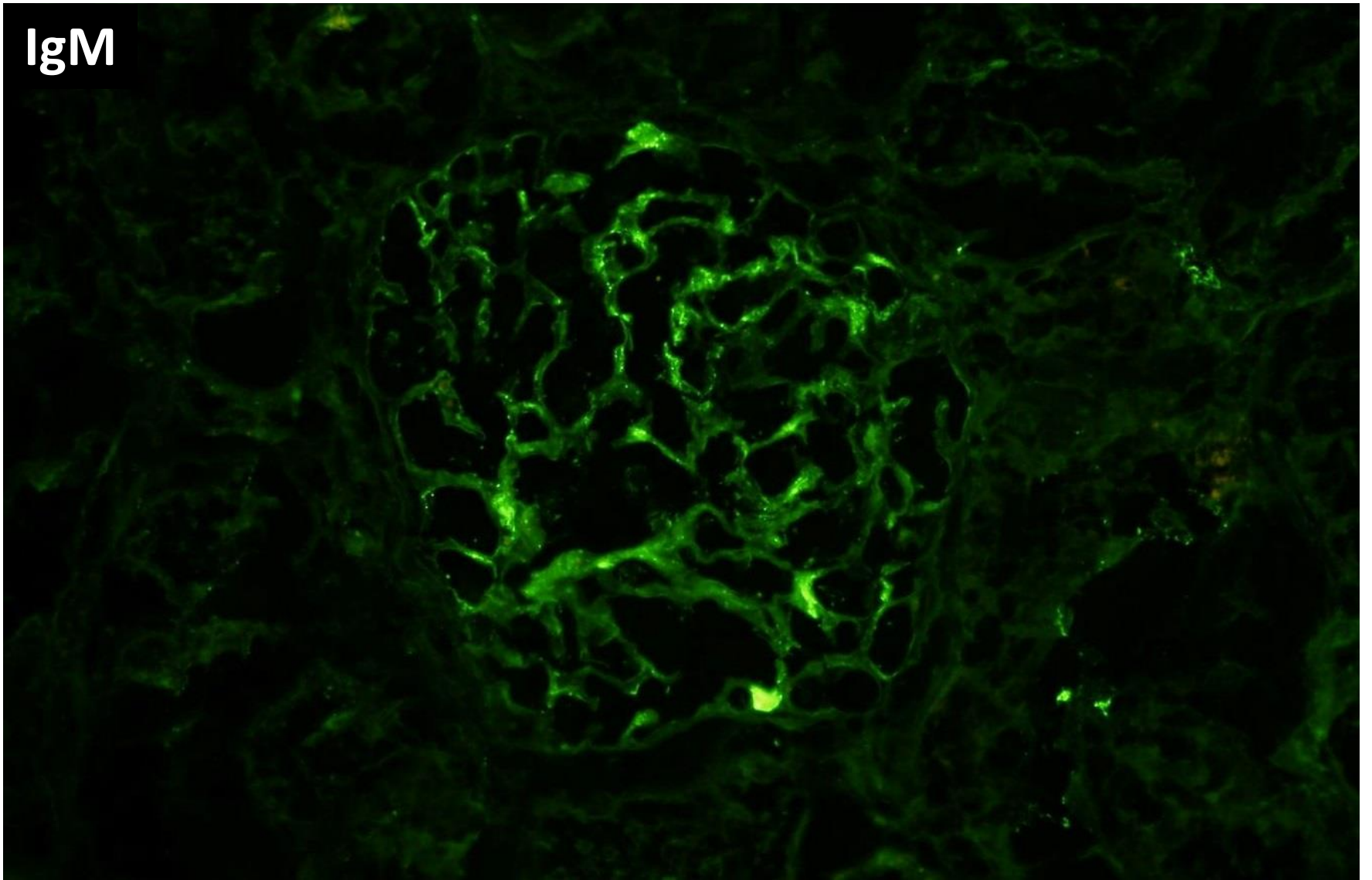
Zoom 40x 0.119 mm²



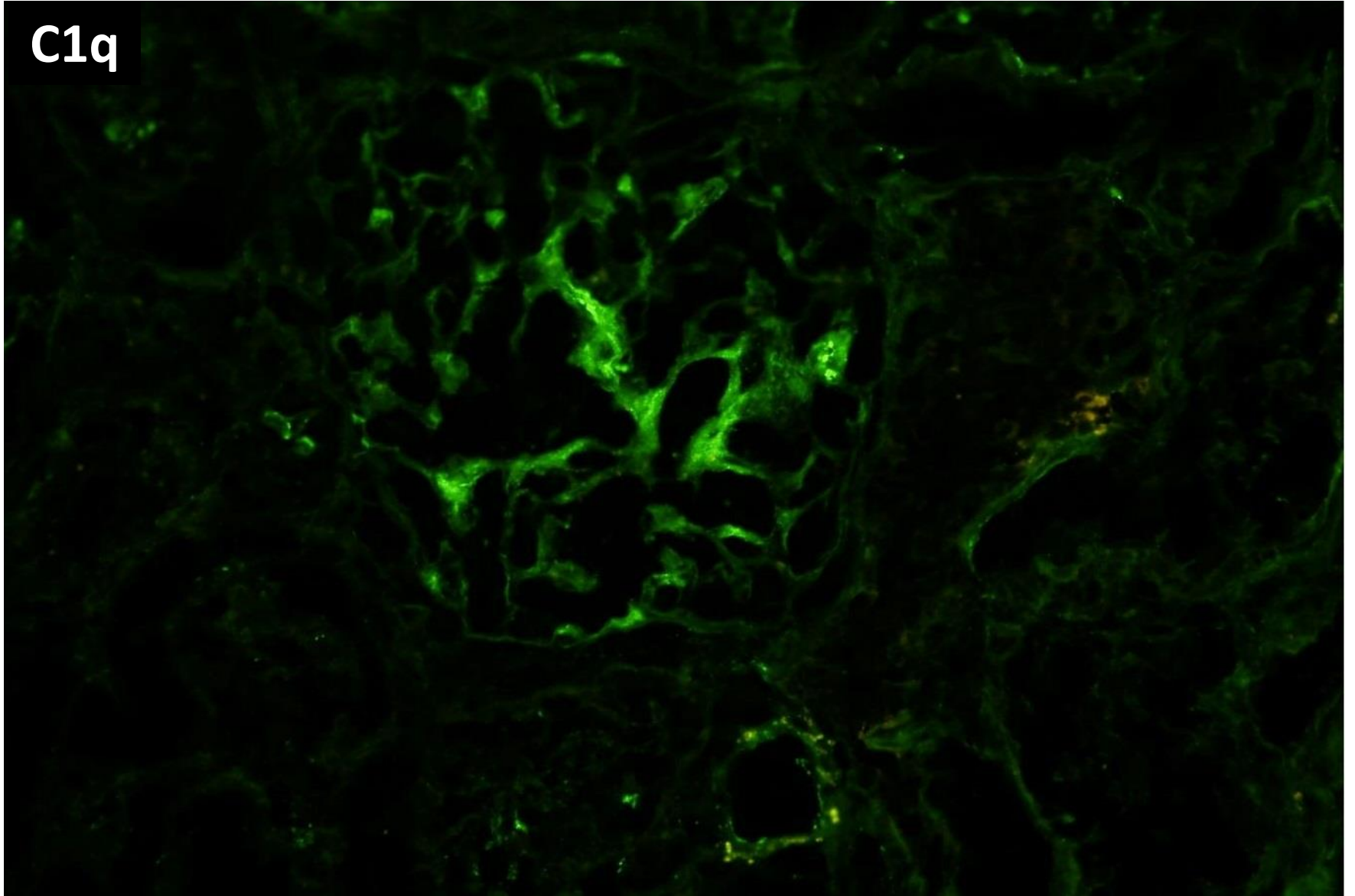
IgG



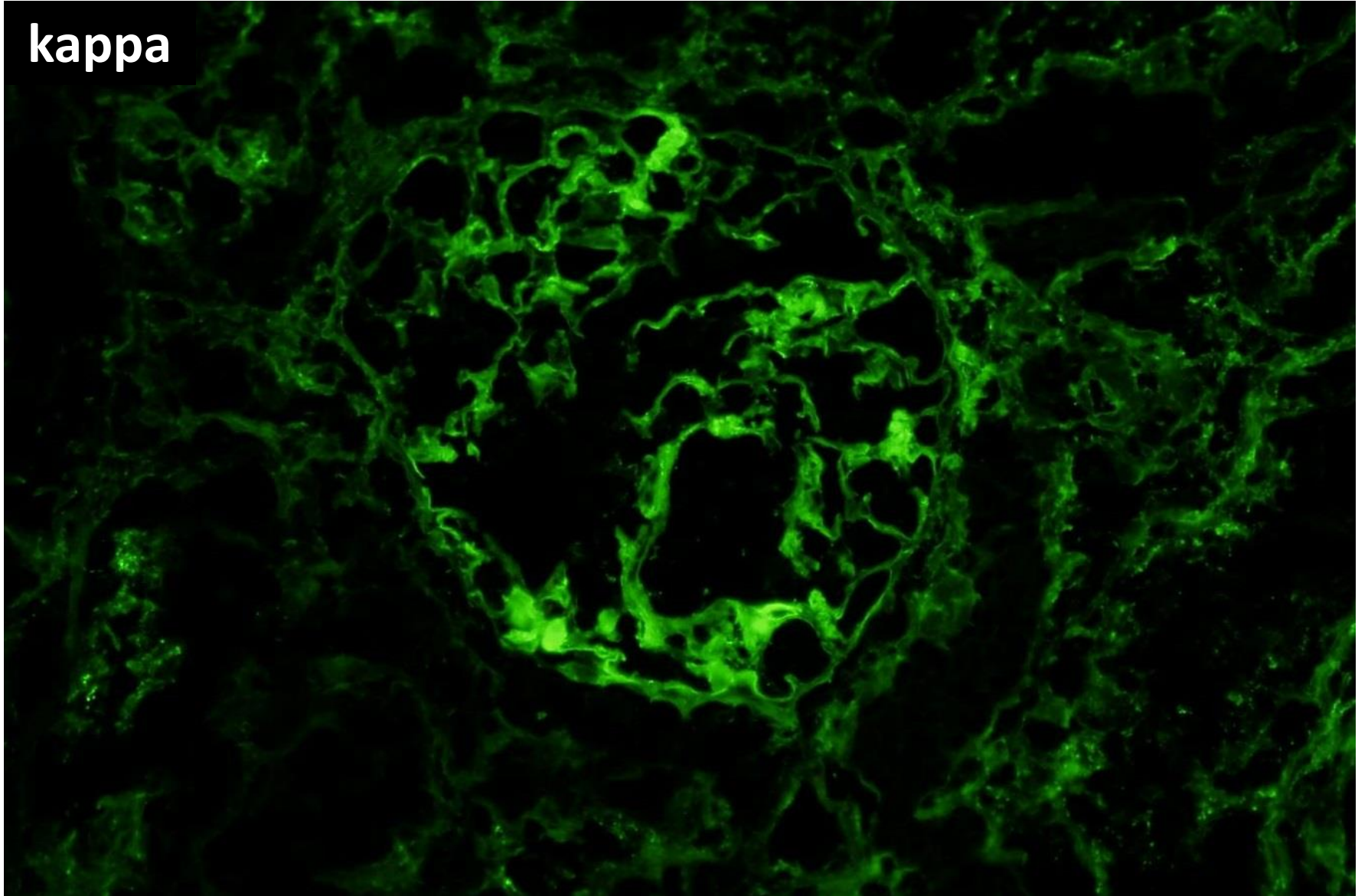
IgM



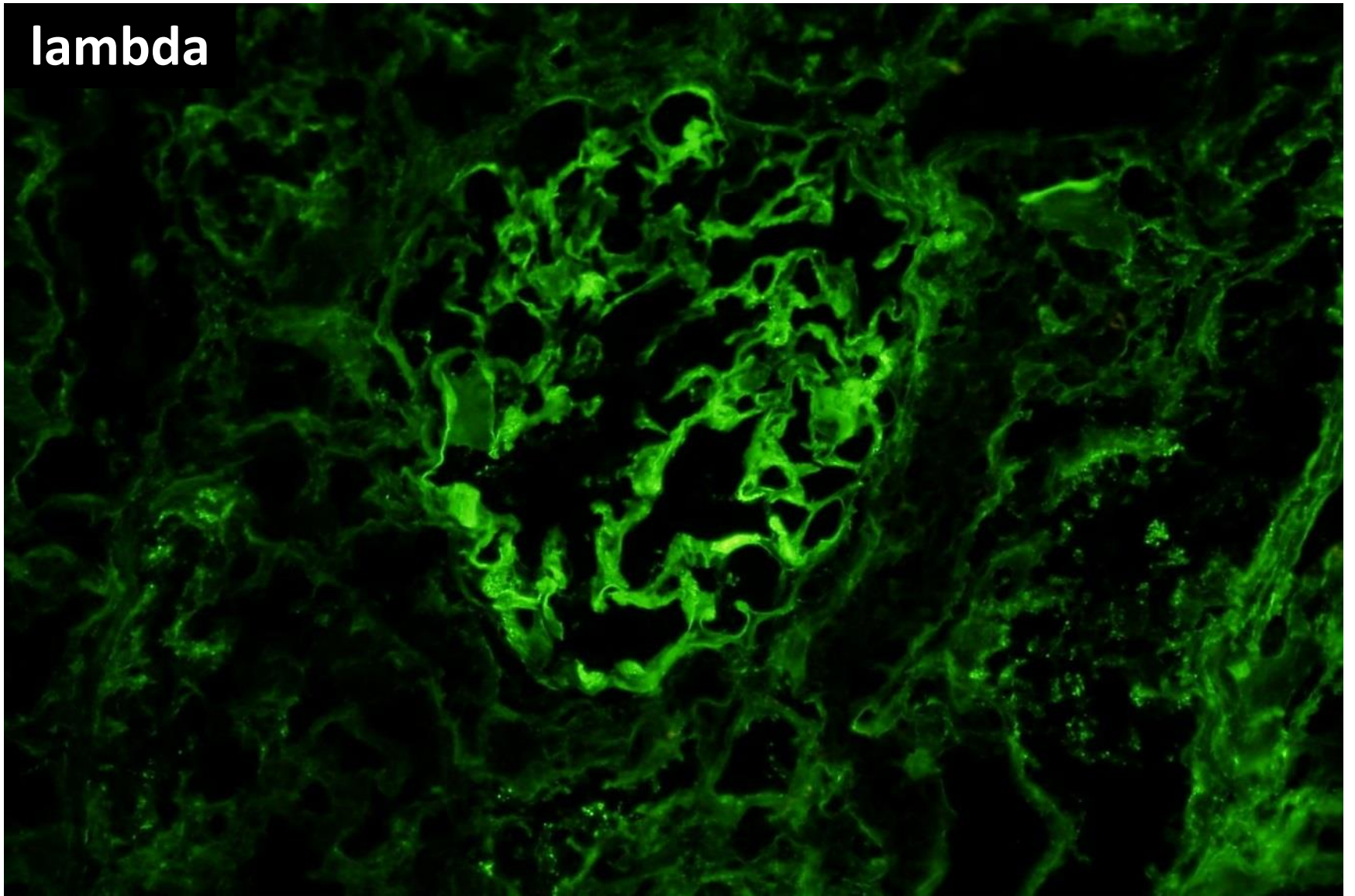
C1q

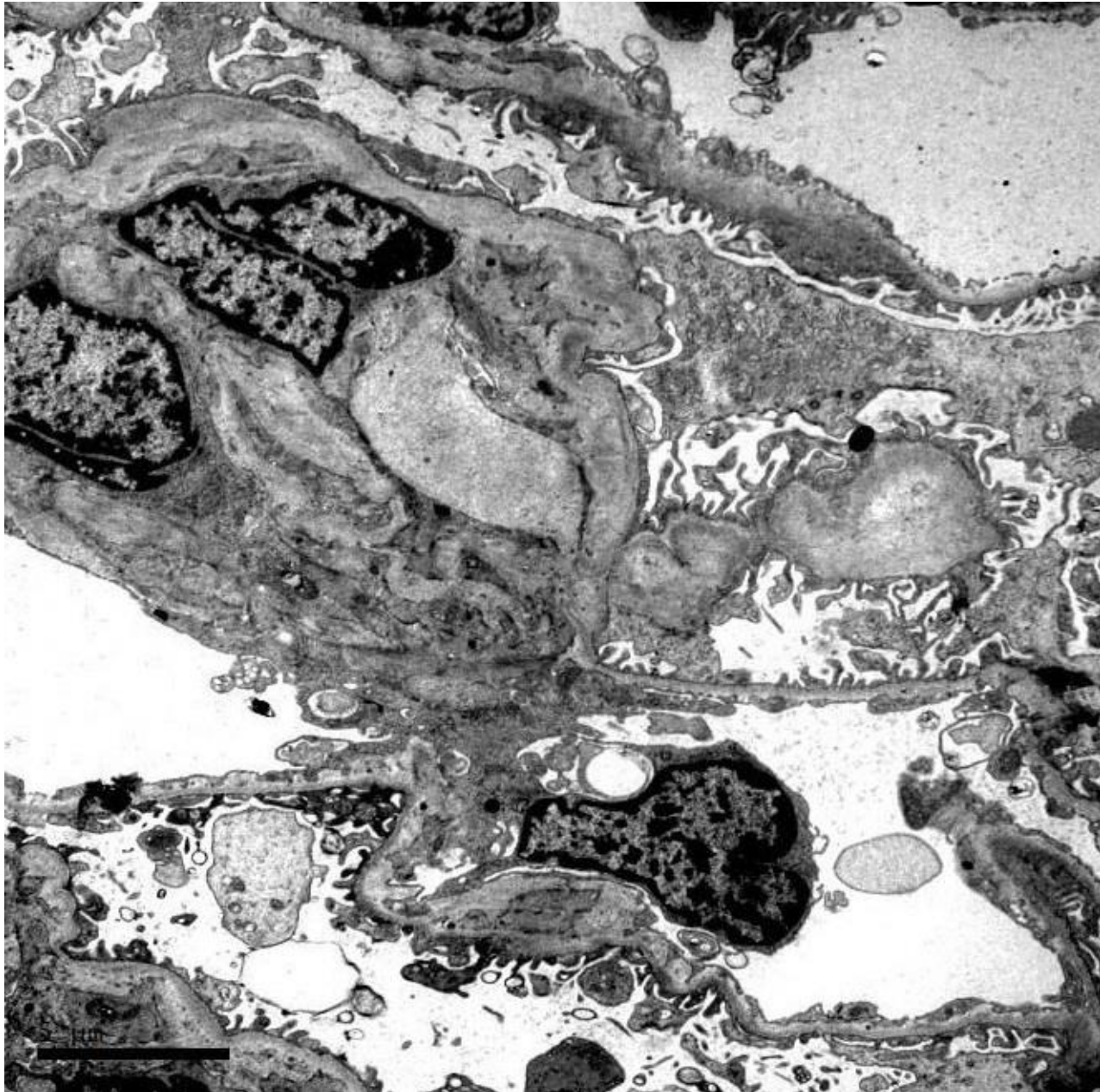


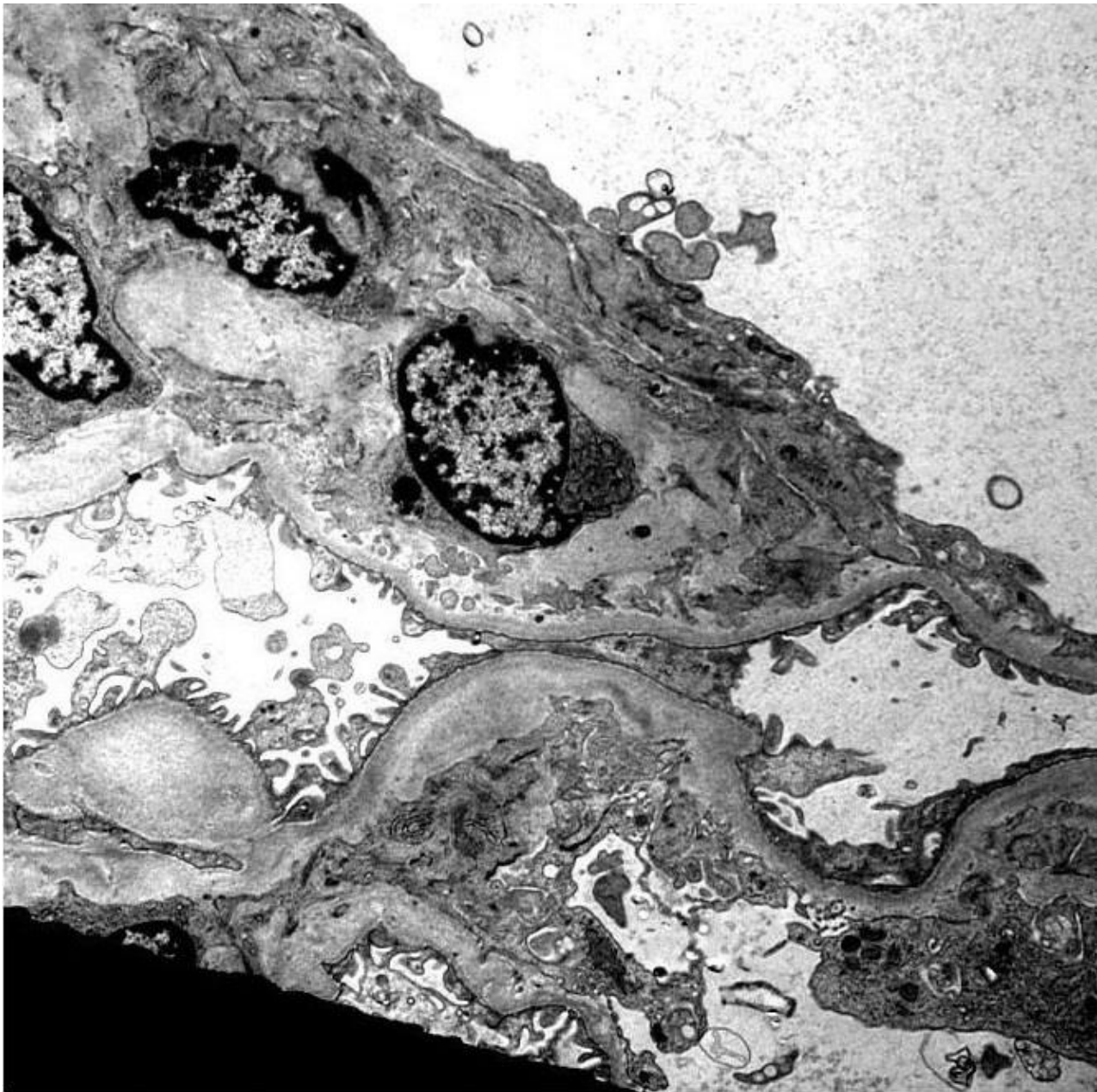
kappa

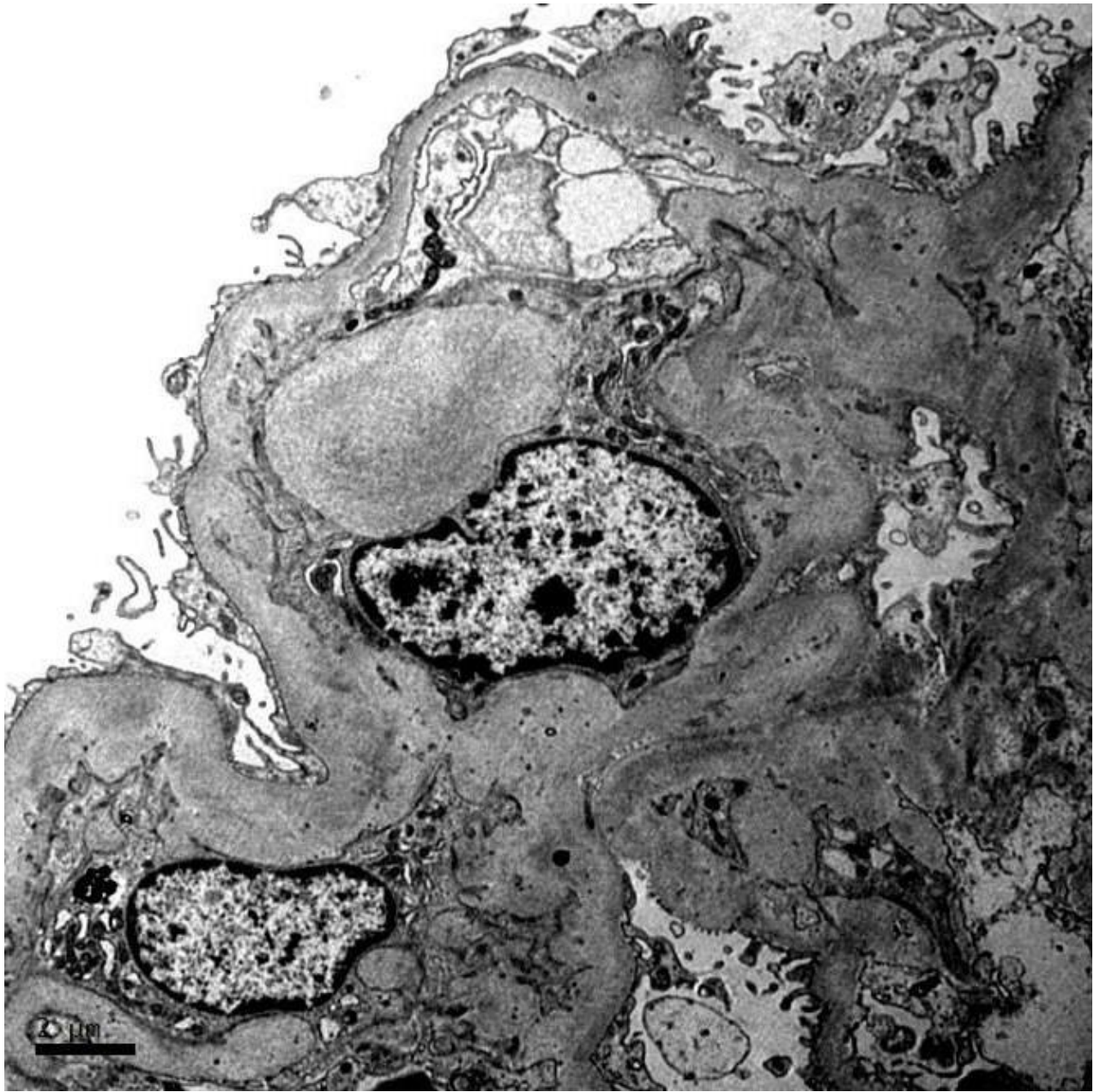


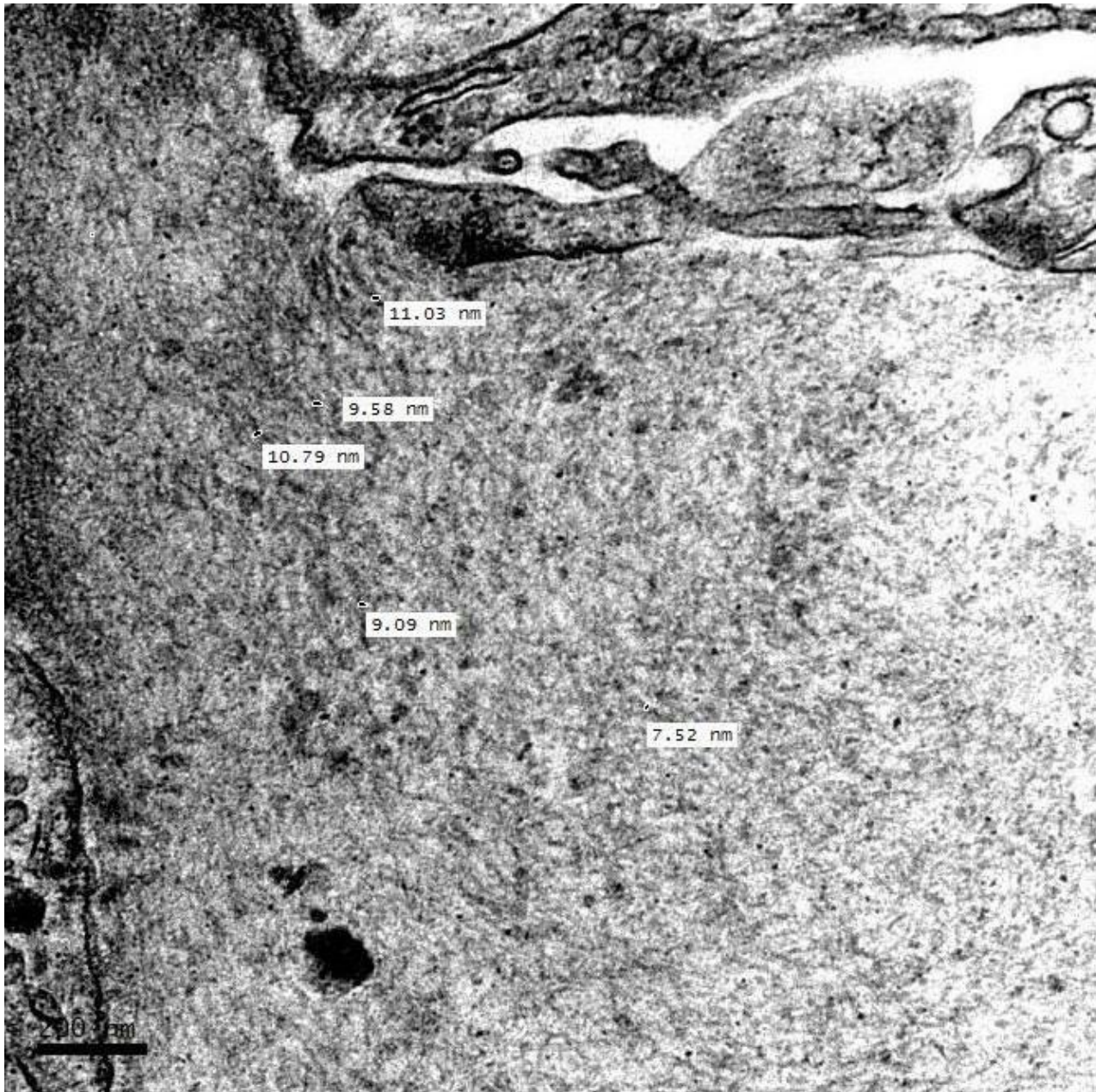
lambda













RENAL BIOPSY CLINICOPATHOLOGICAL WORKSHOP 2018



PATHOLOGY



Division of Pathology
Singapore General Hospital



Department of Renal Medicine
Singapore General Hospital



MEDICINE