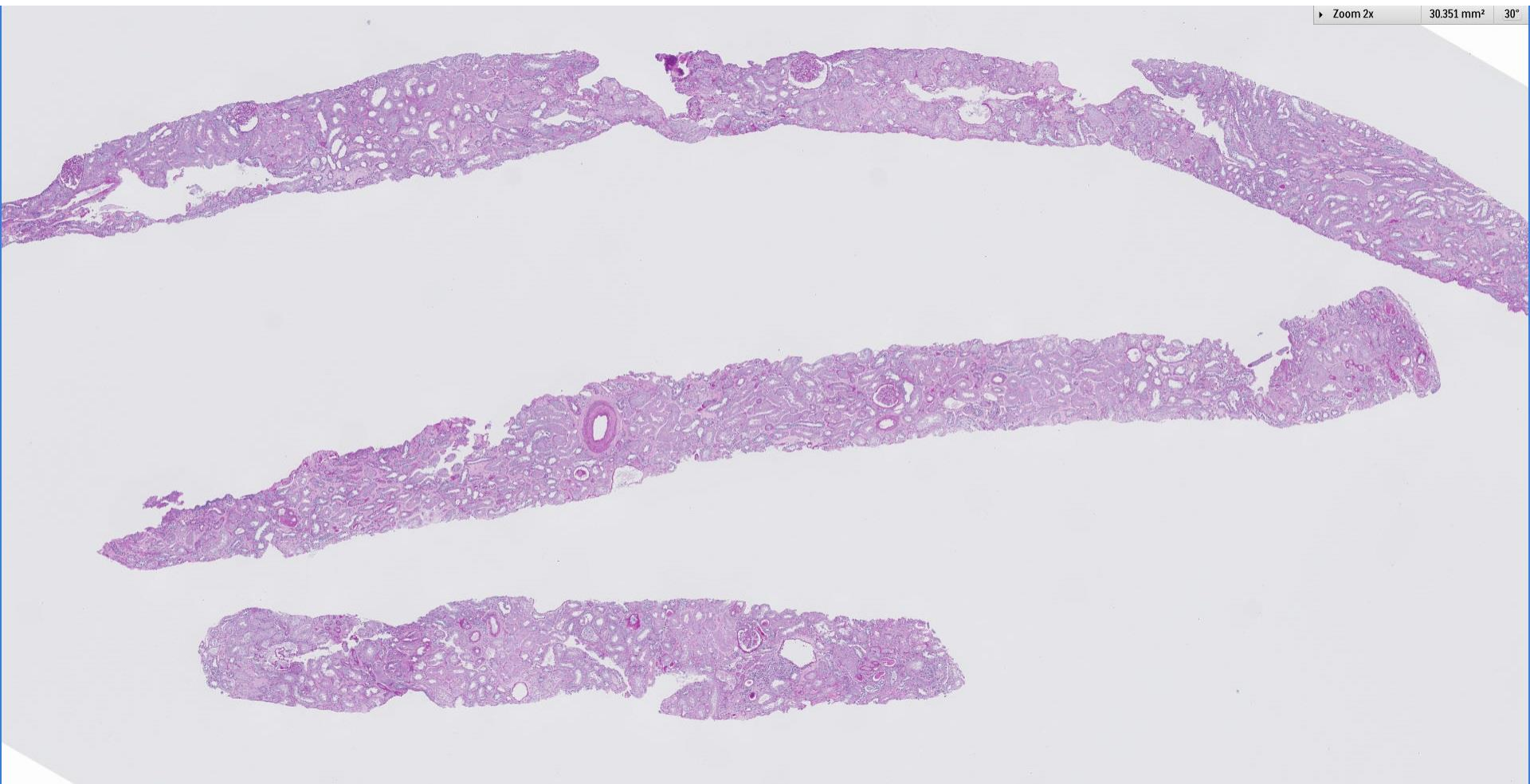
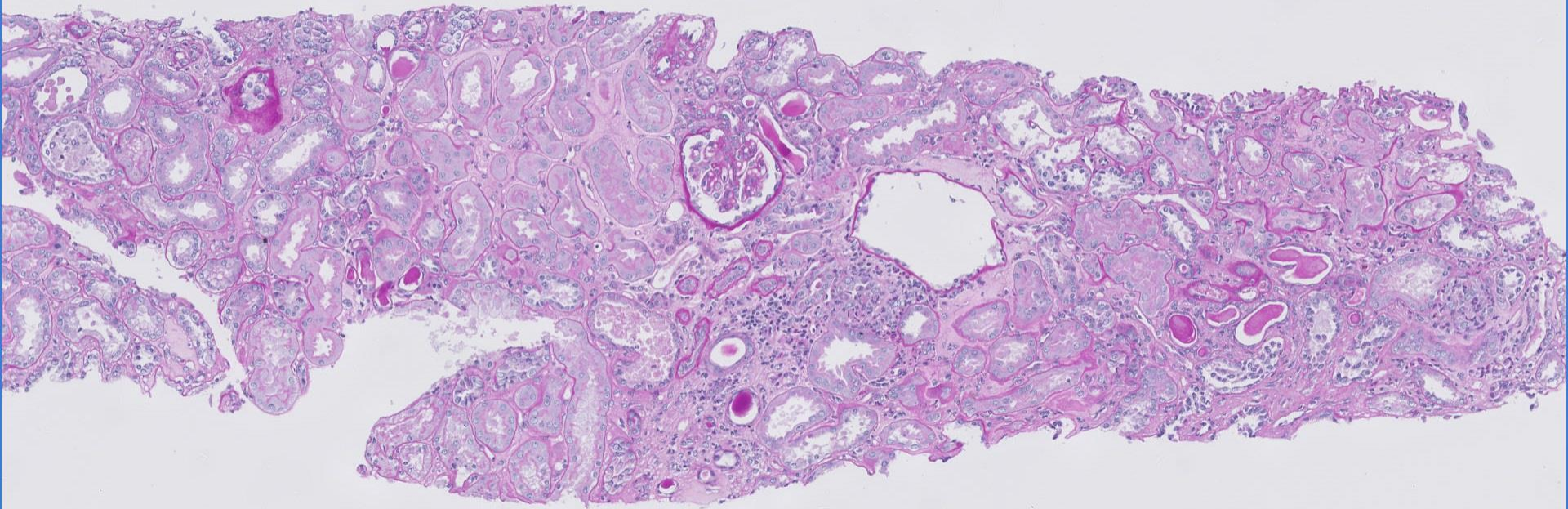
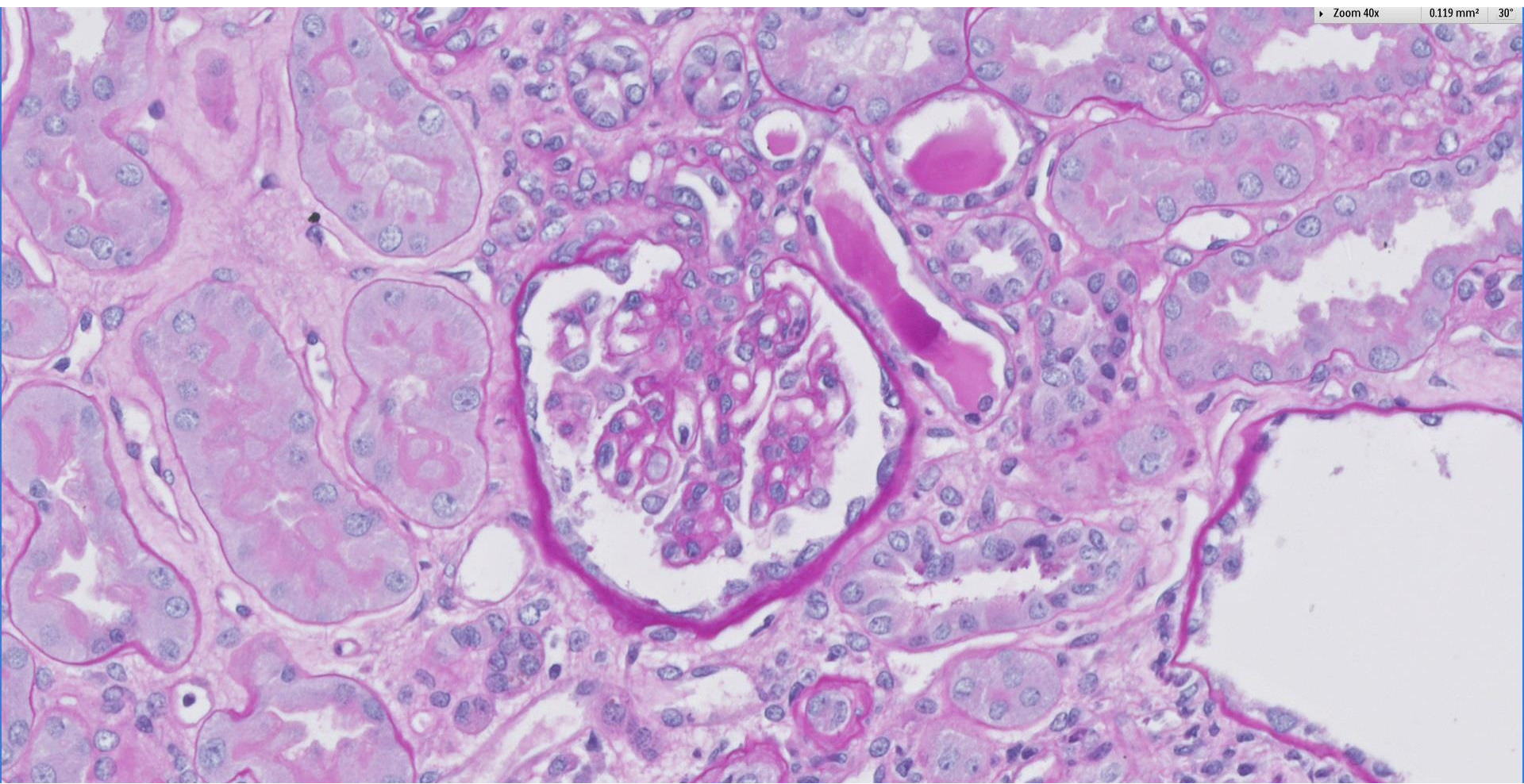


Case 44

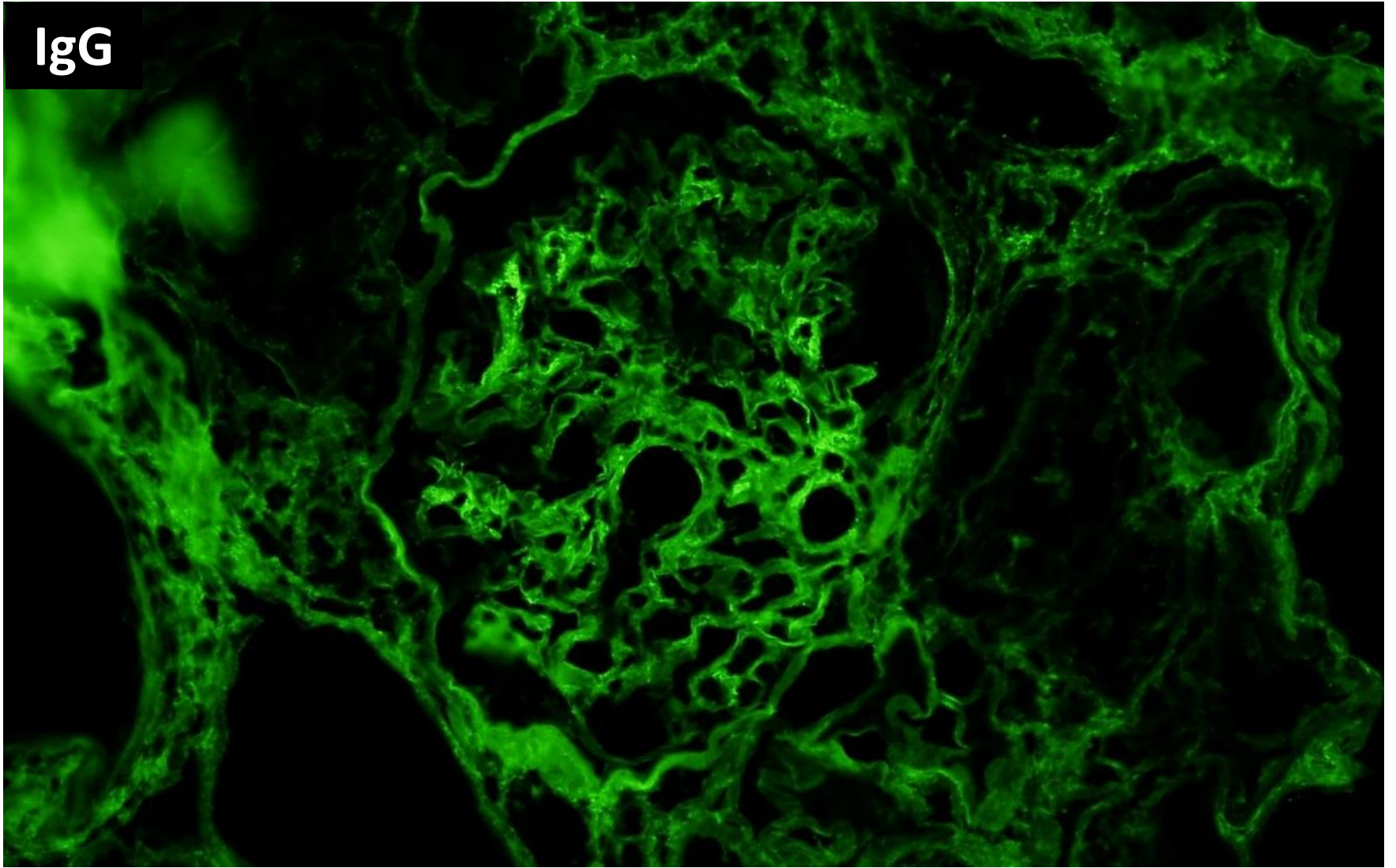
48 year old female presented with nephritic syndrome.



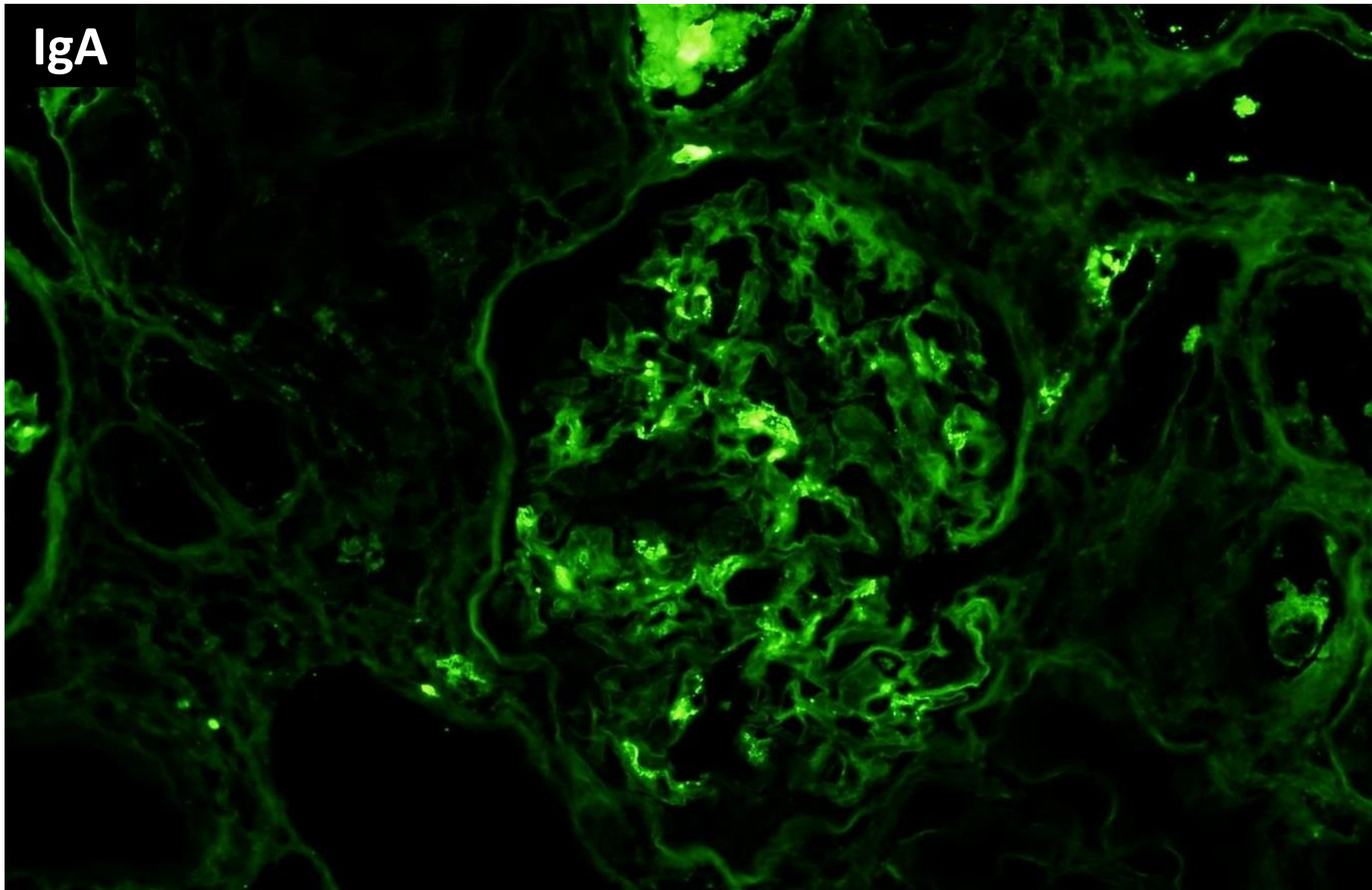




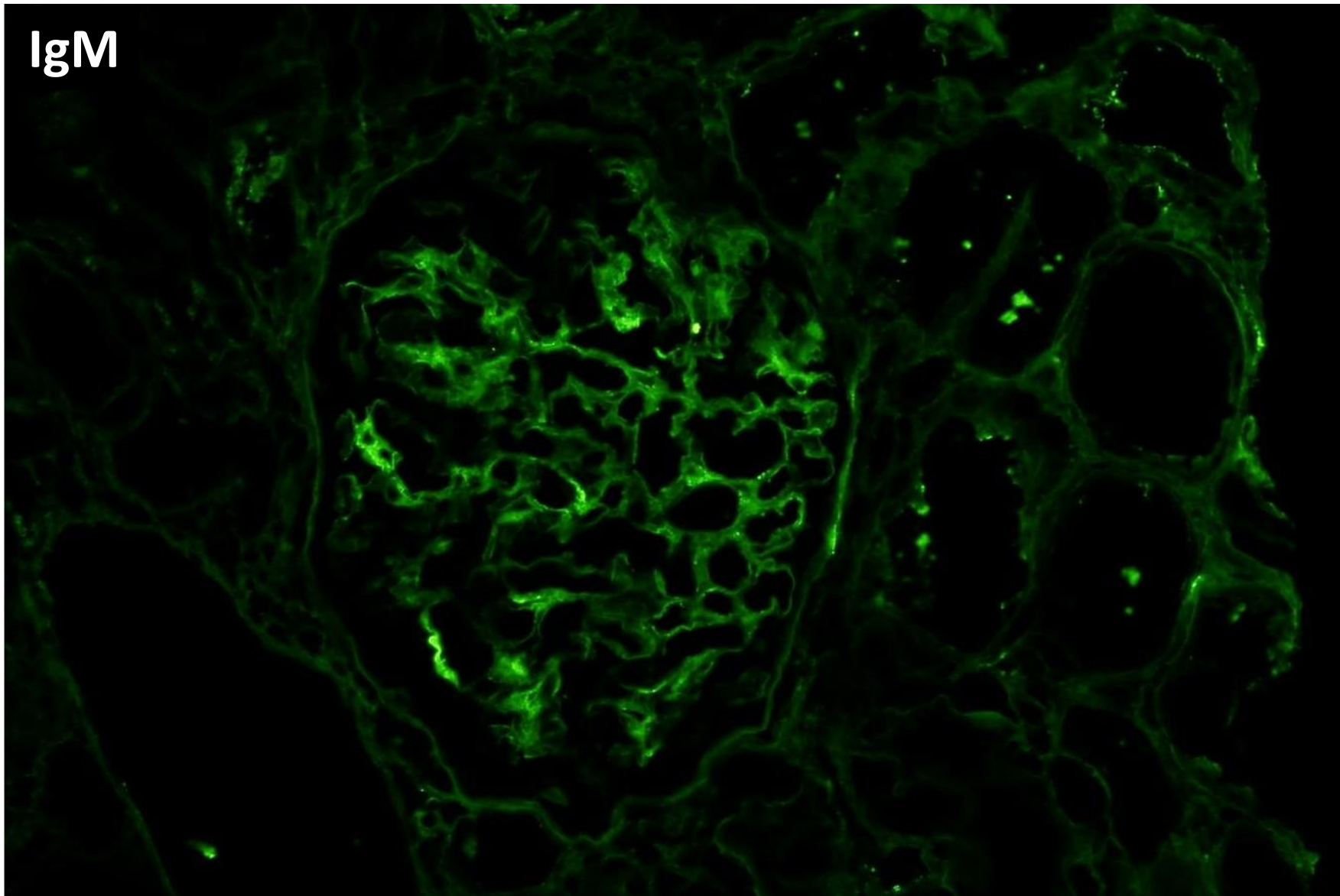
IgG



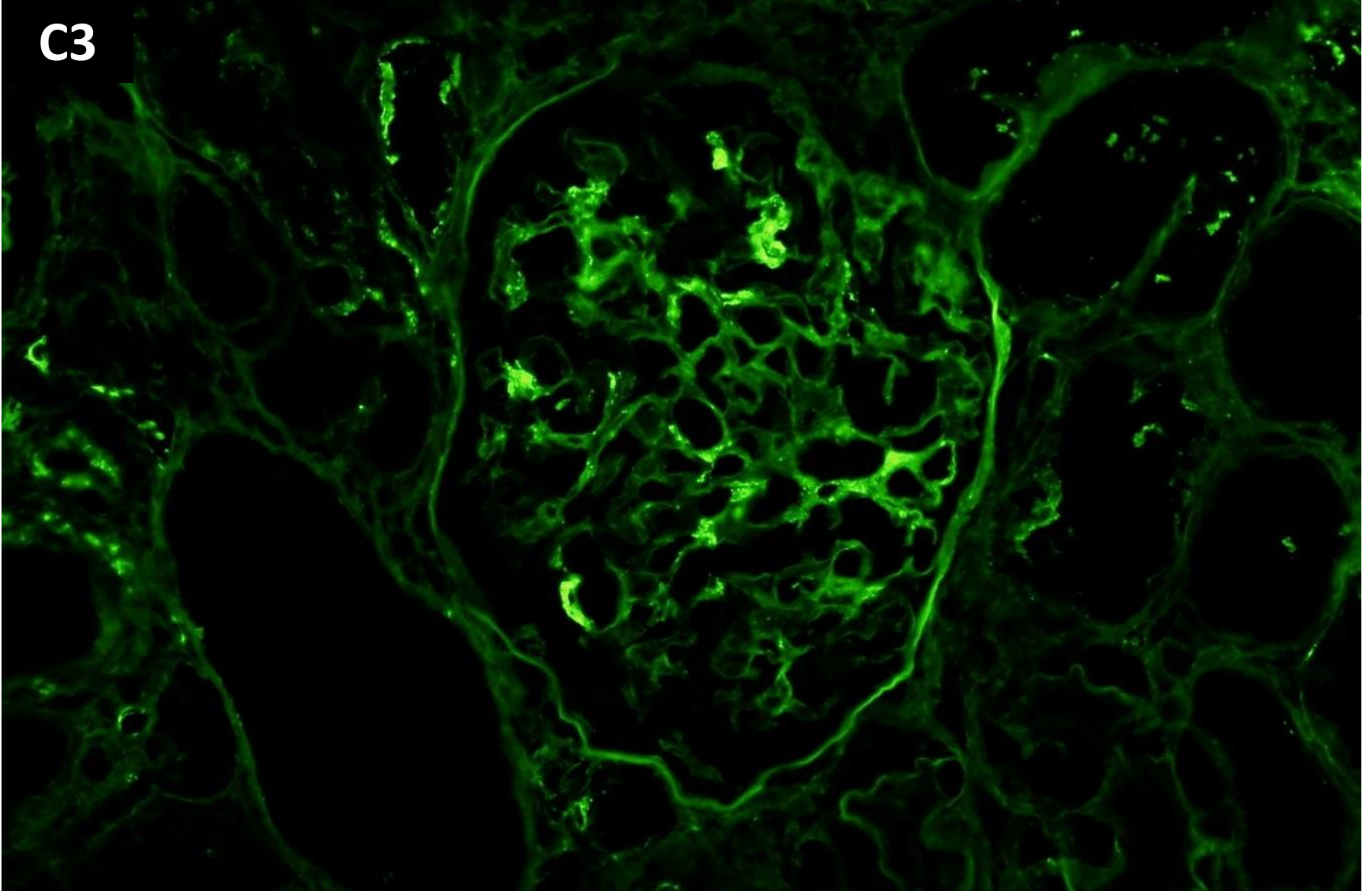
IgA

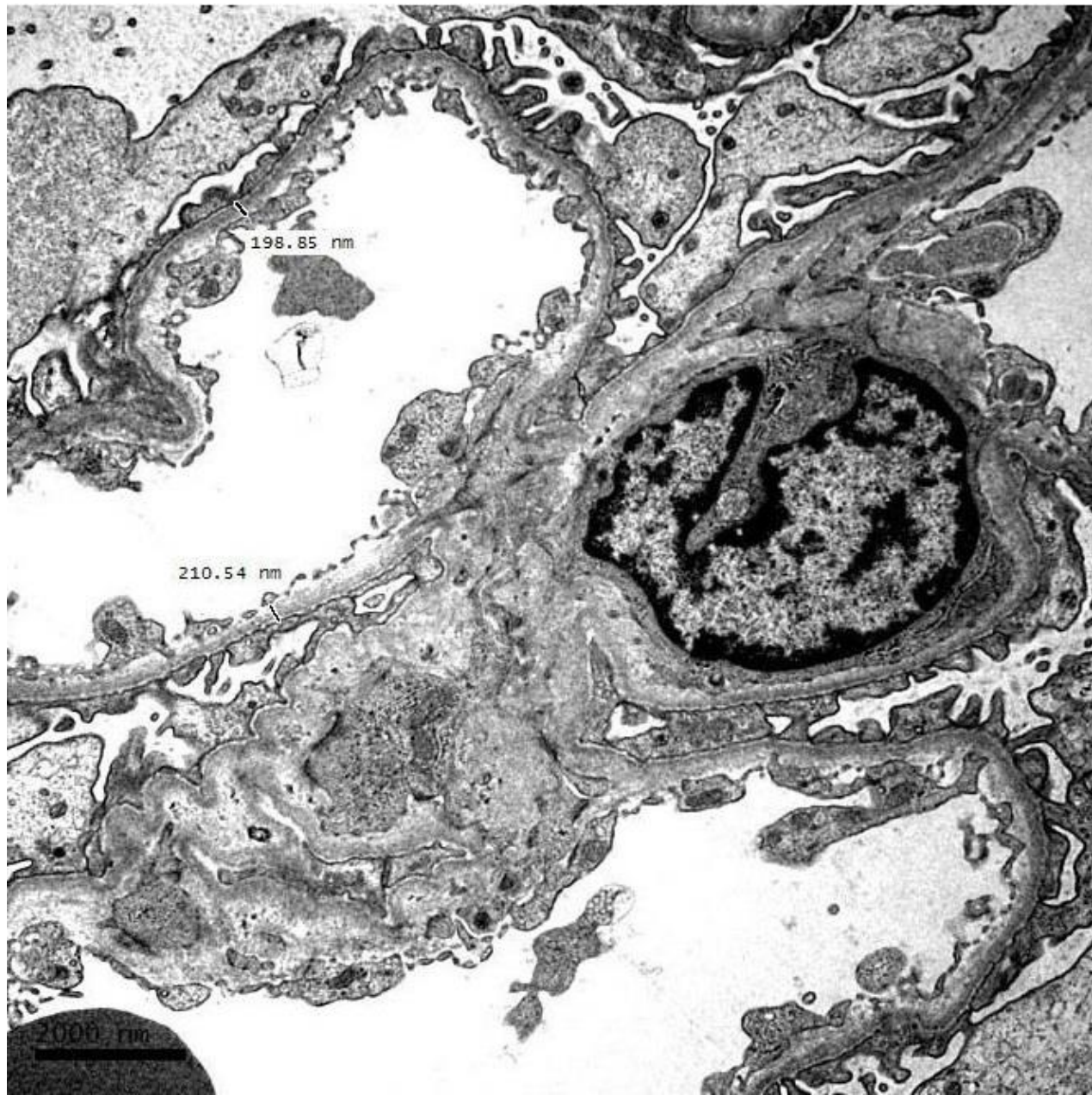


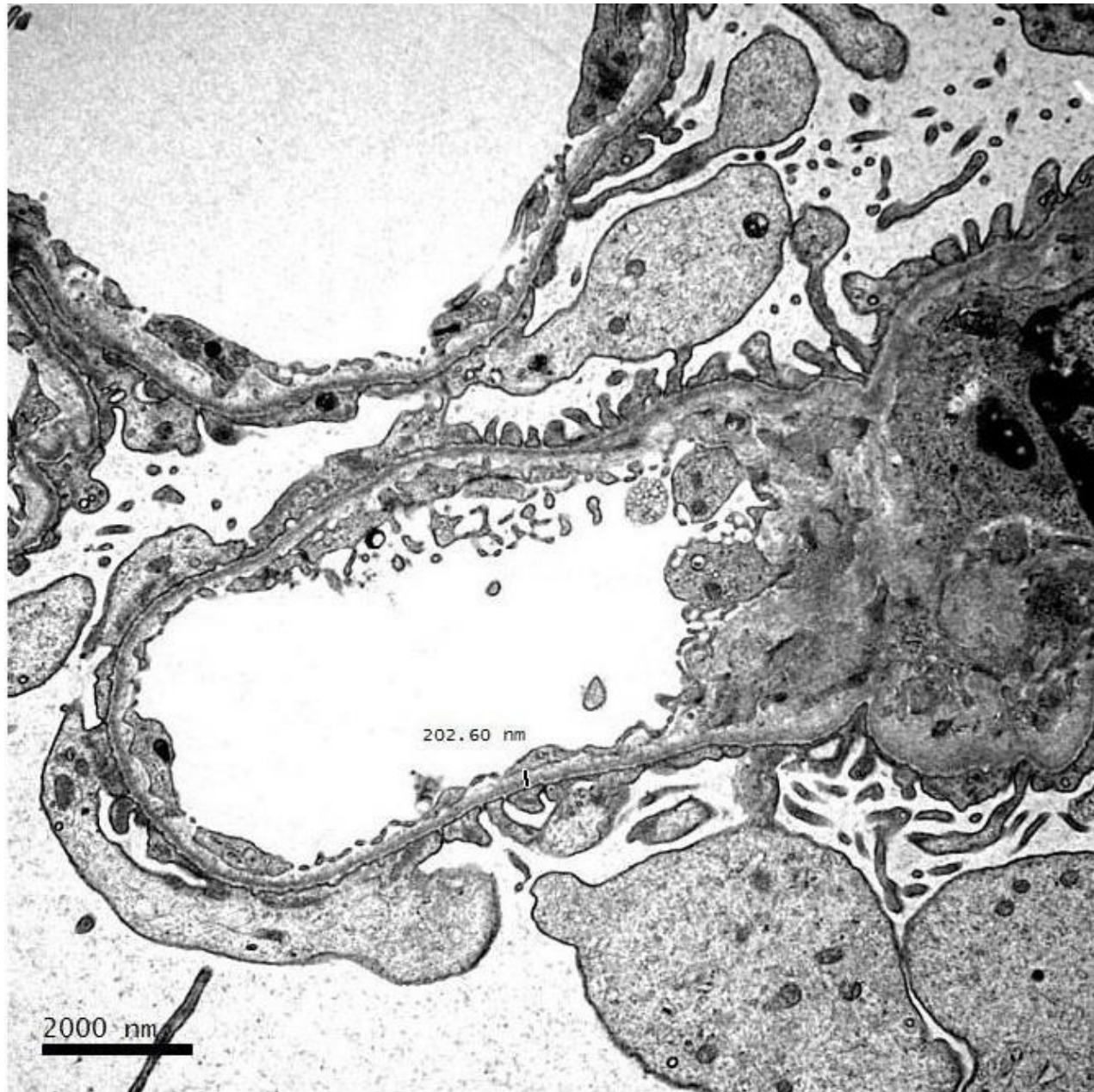
IgM

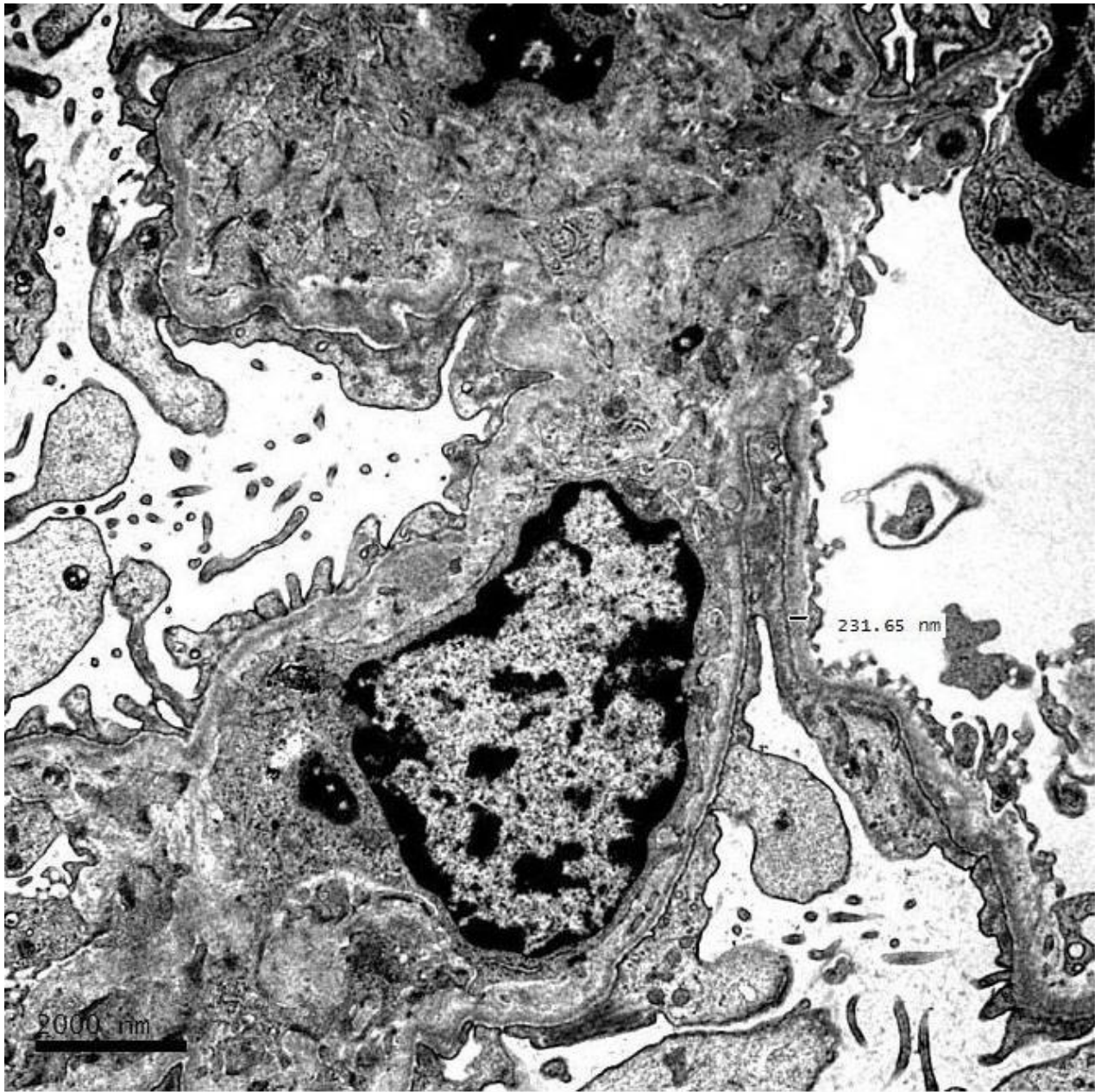


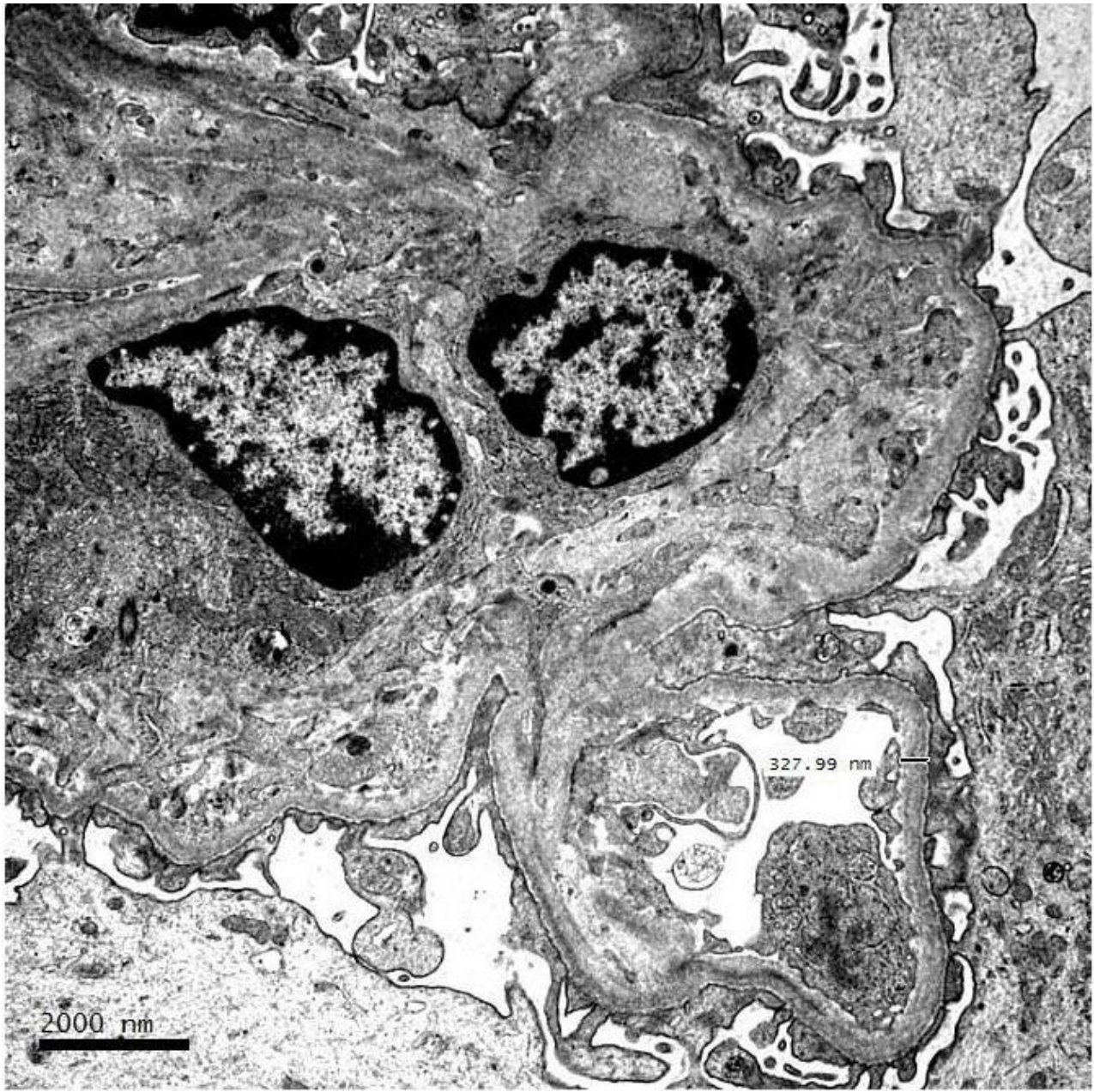
C3

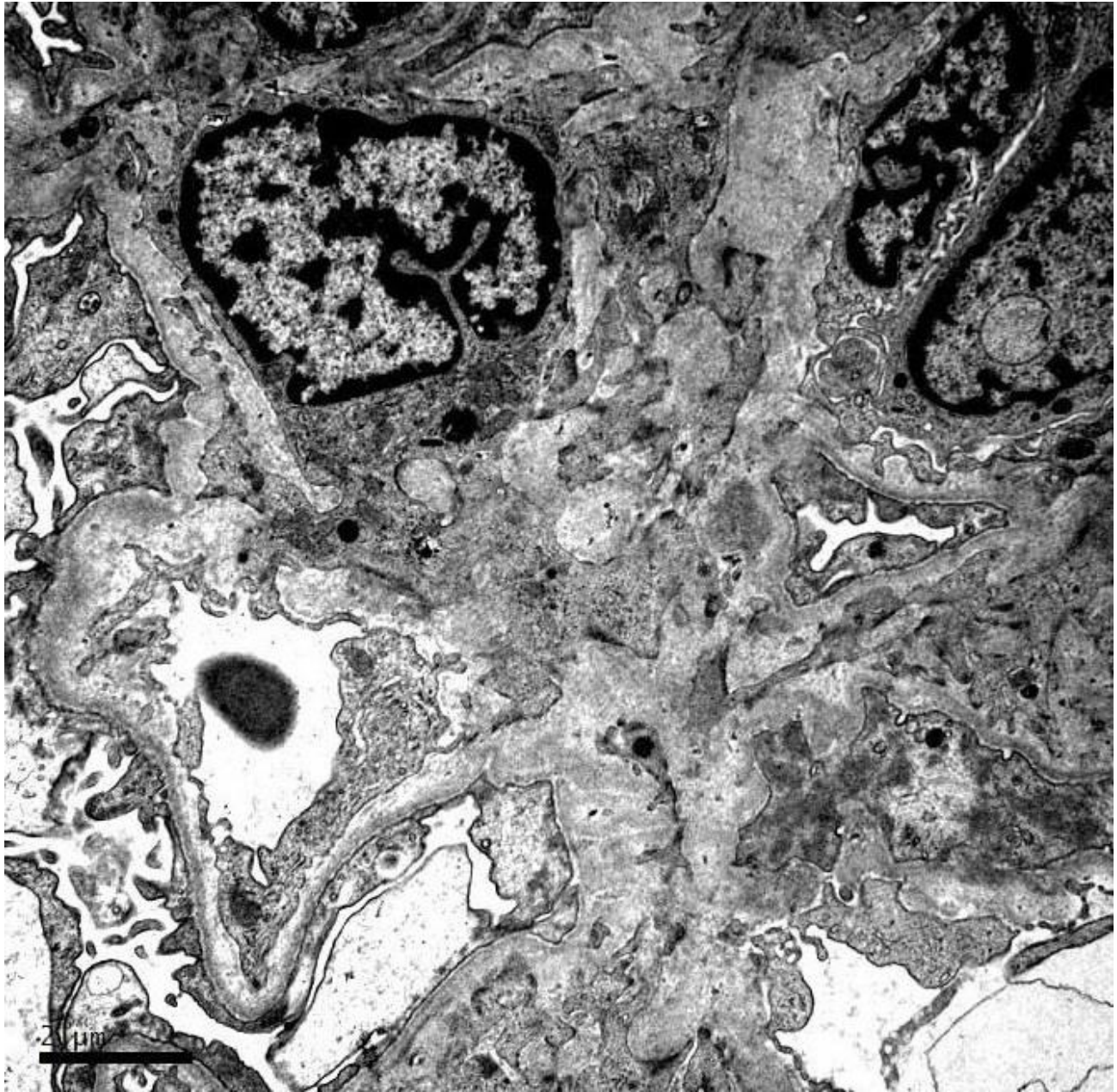














RENAL BIOPSY CLINICOPATHOLOGICAL WORKSHOP 2018



PATHOLOGY



Division of Pathology
Singapore General Hospital



Department of Renal Medicine
Singapore General Hospital



MEDICINE