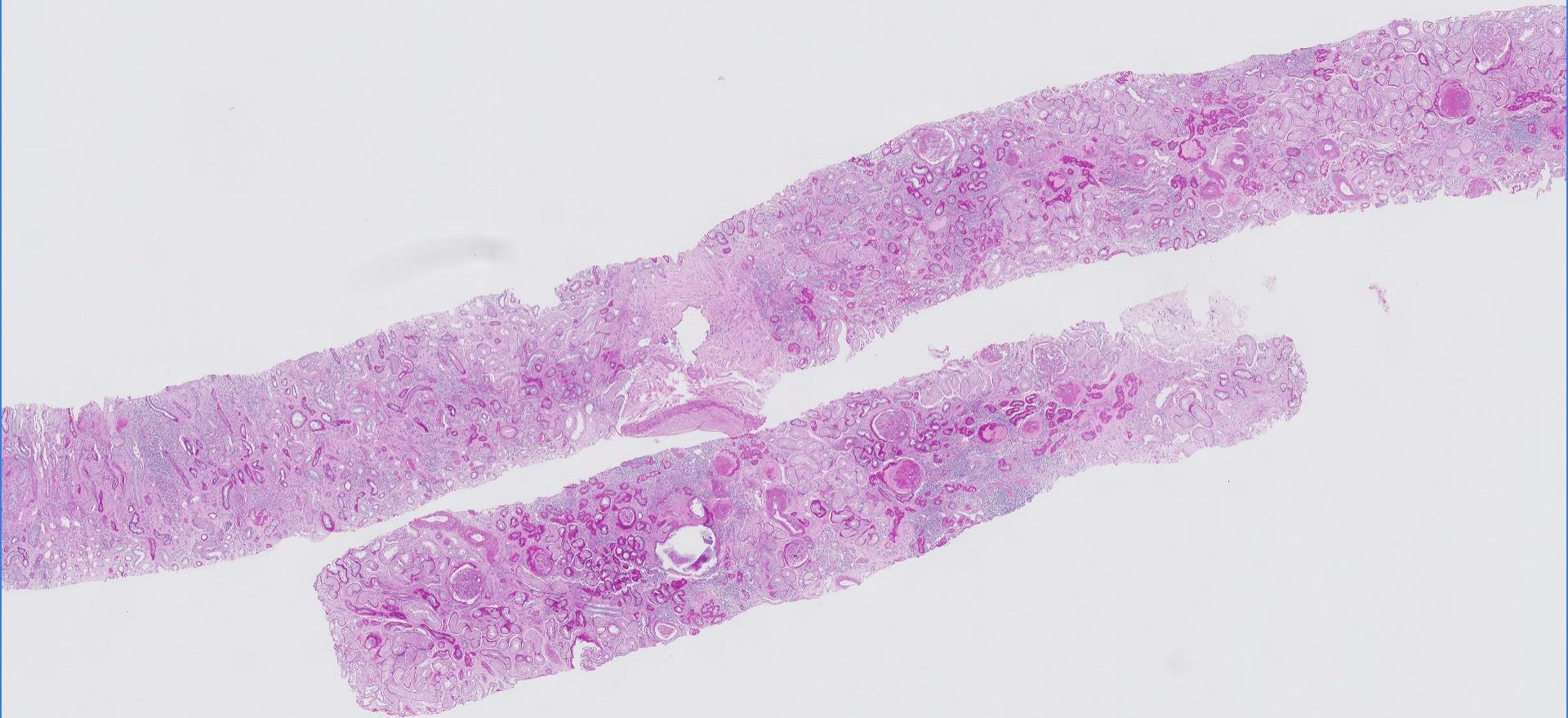
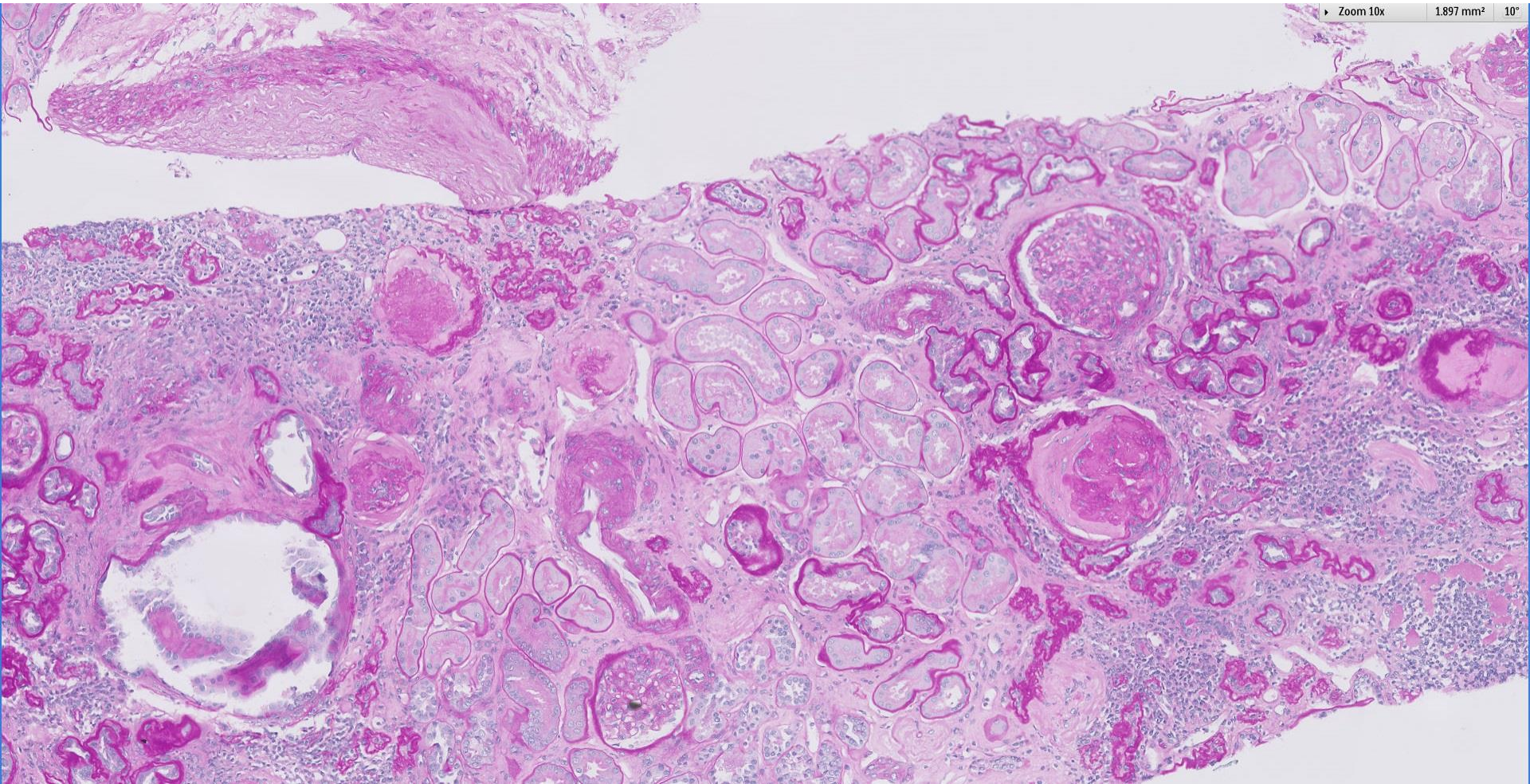
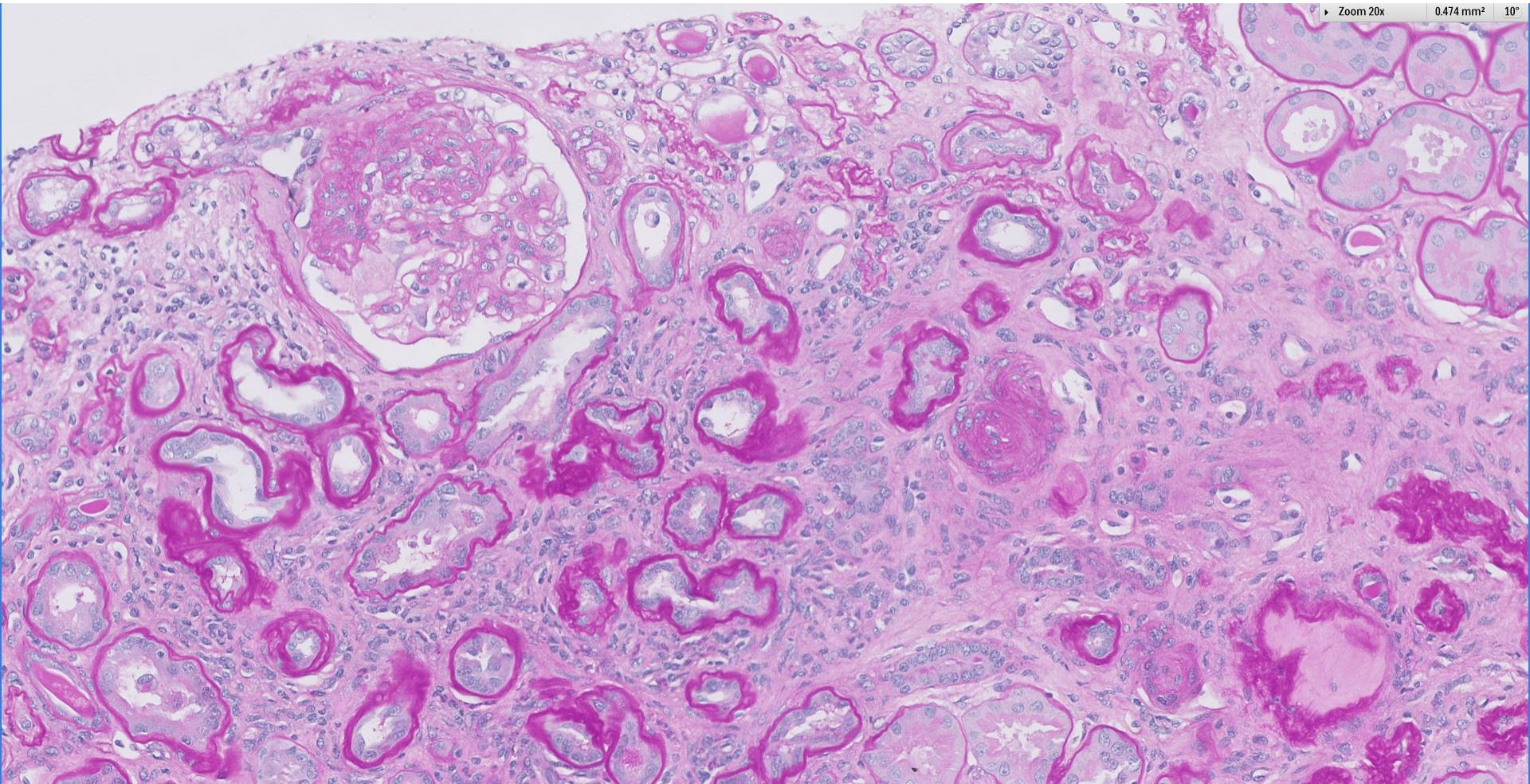


Case 43

58 year old diabetic man with haematuria, proteinuria and progressive renal impairment.

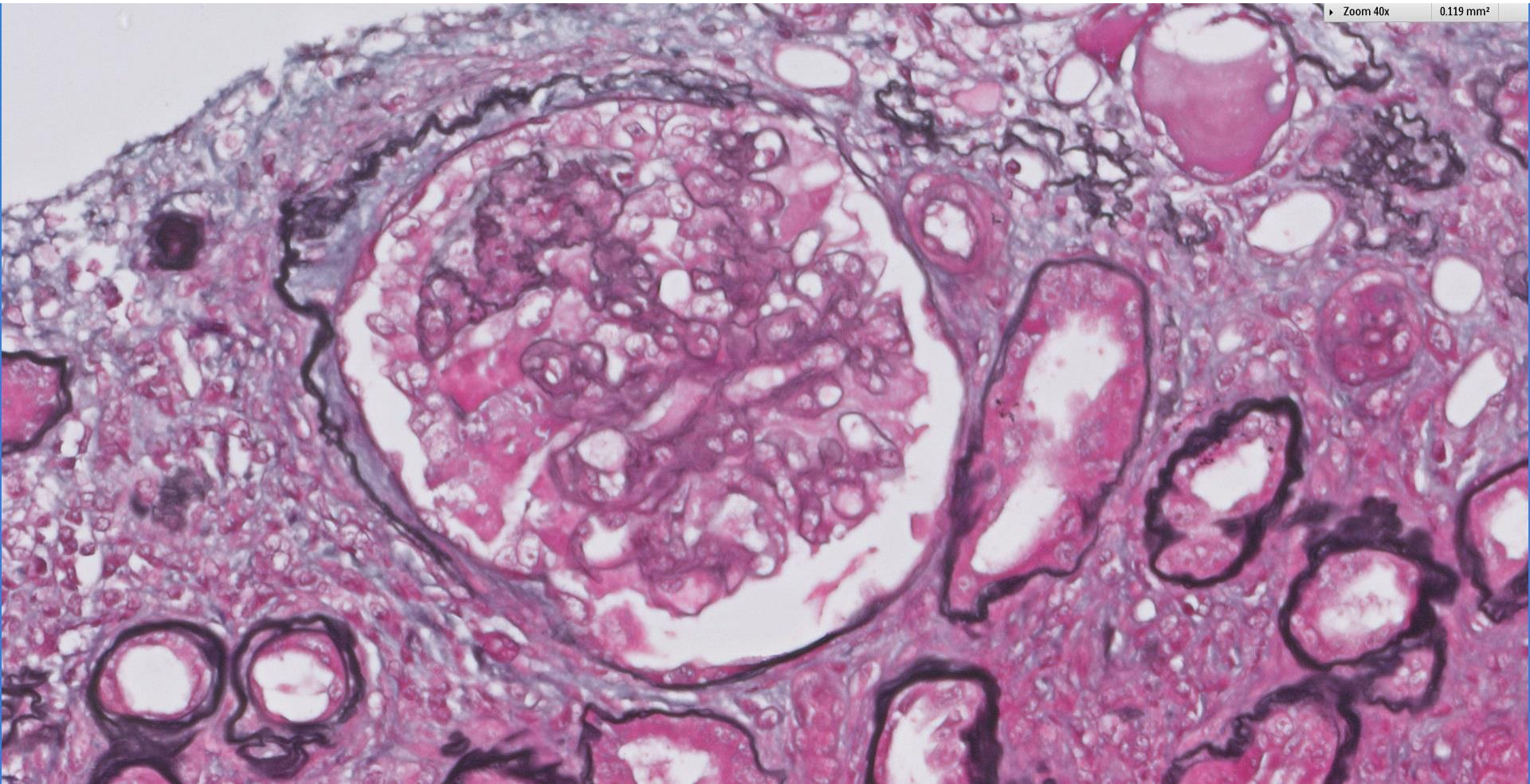




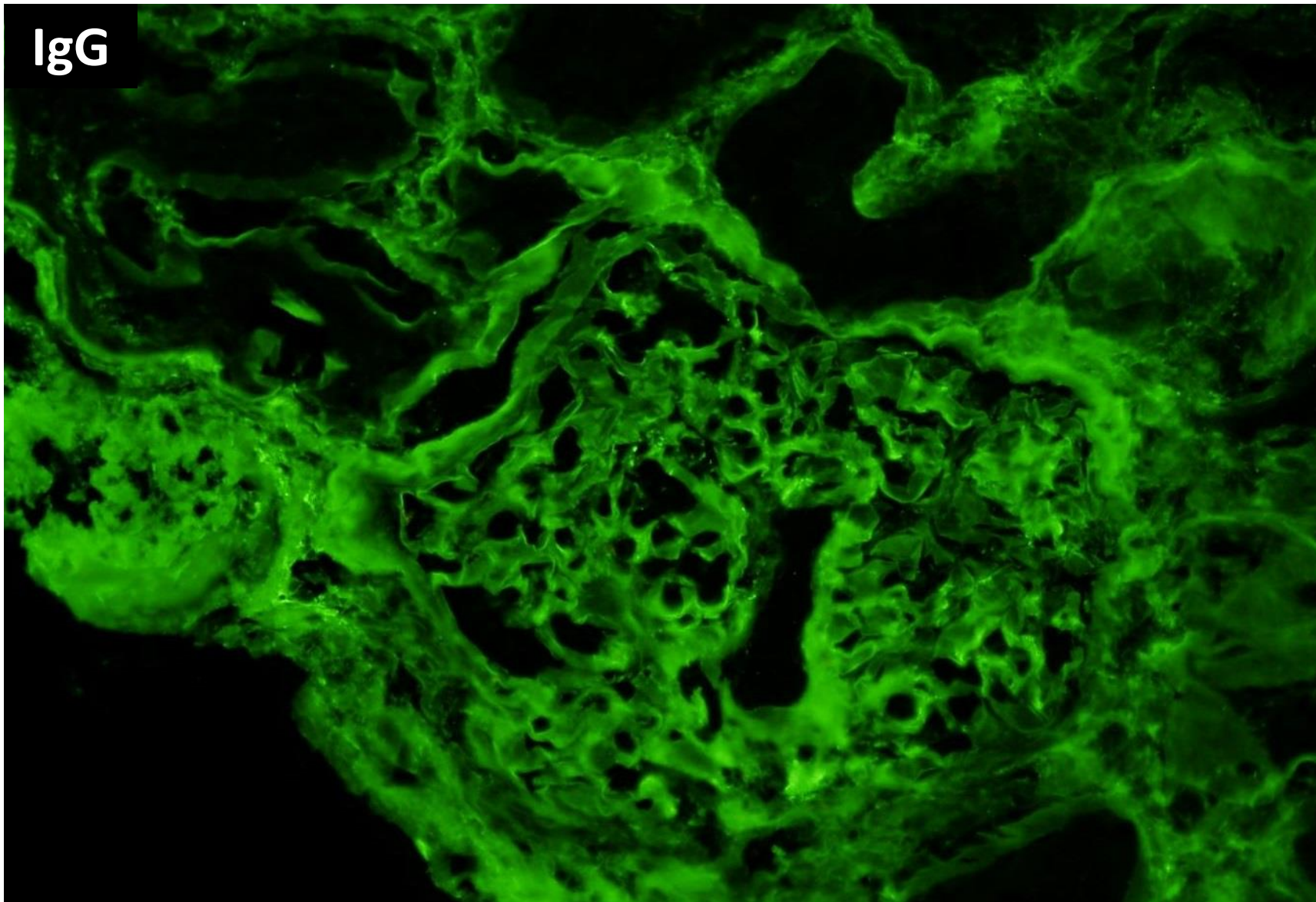


Zoom 40x

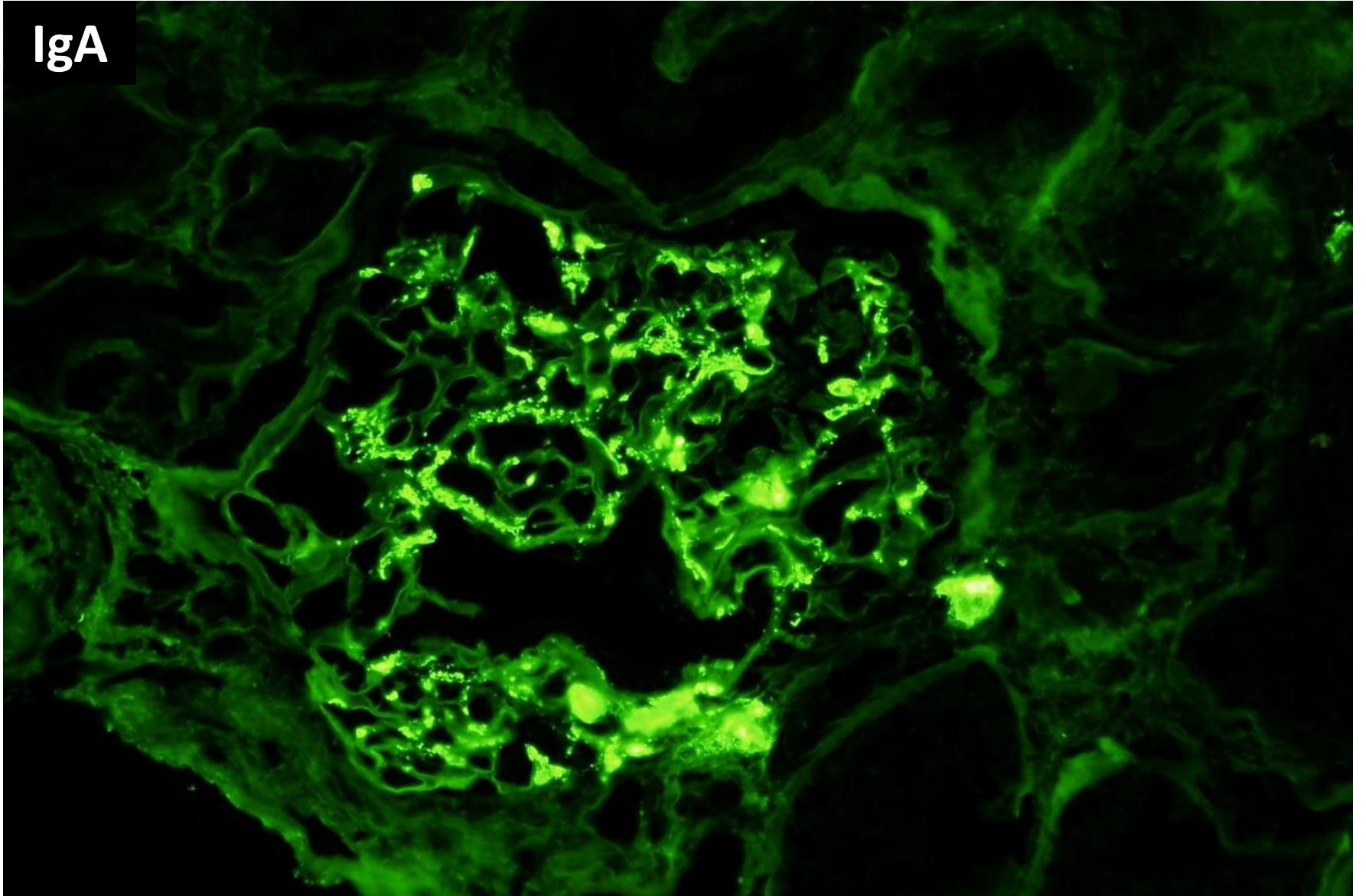
0.119 mm²



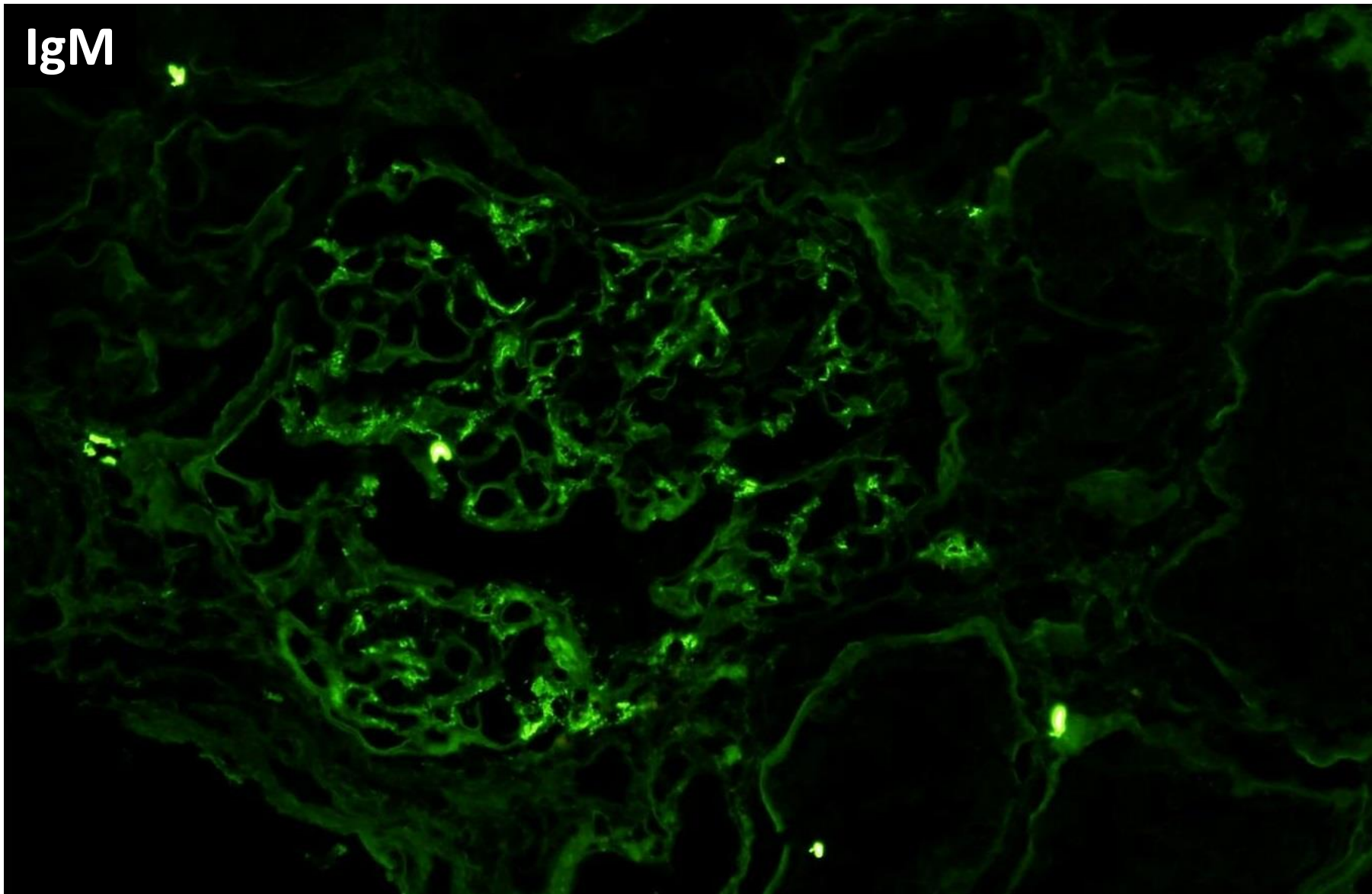
IgG



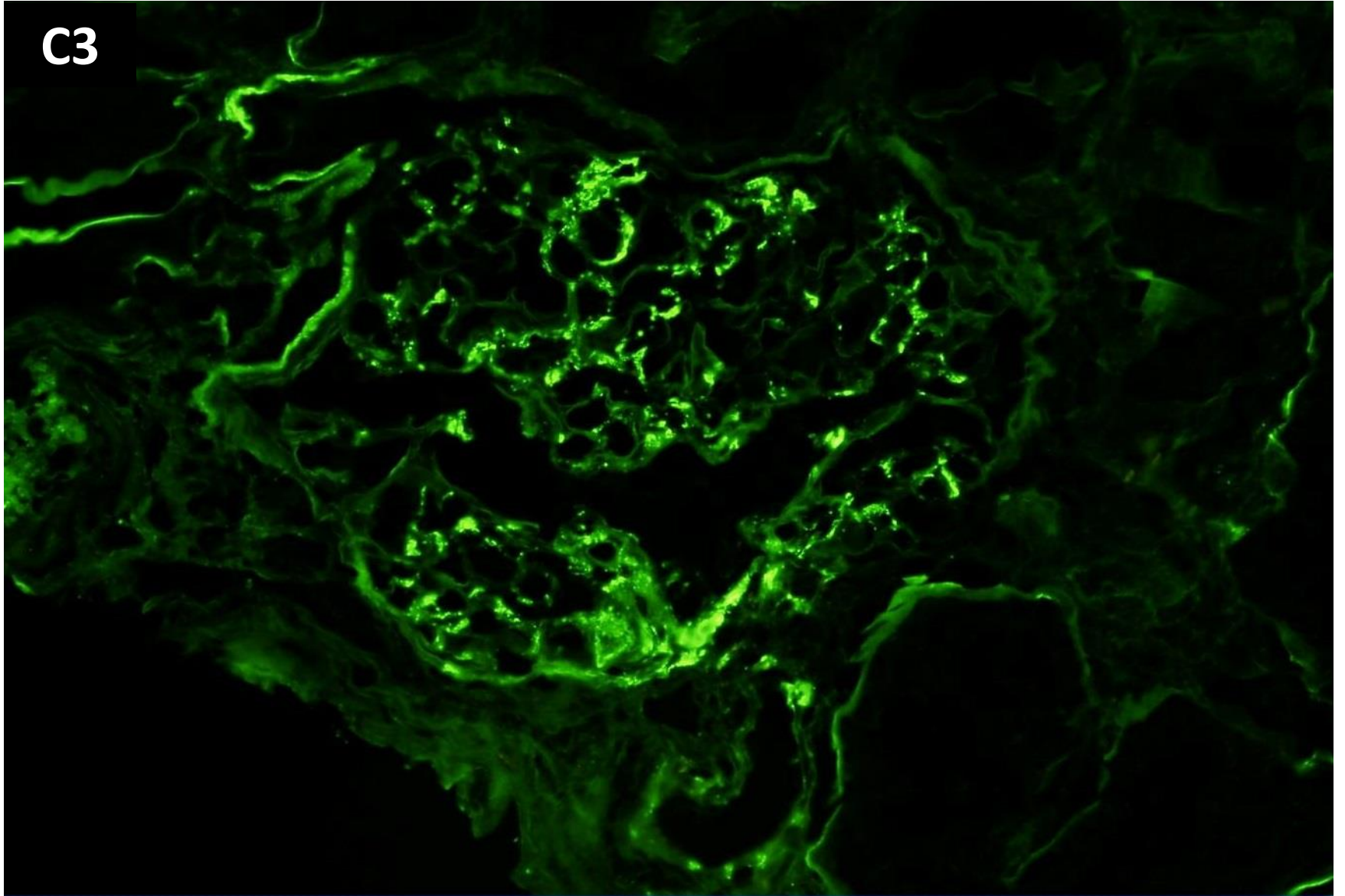
IgA

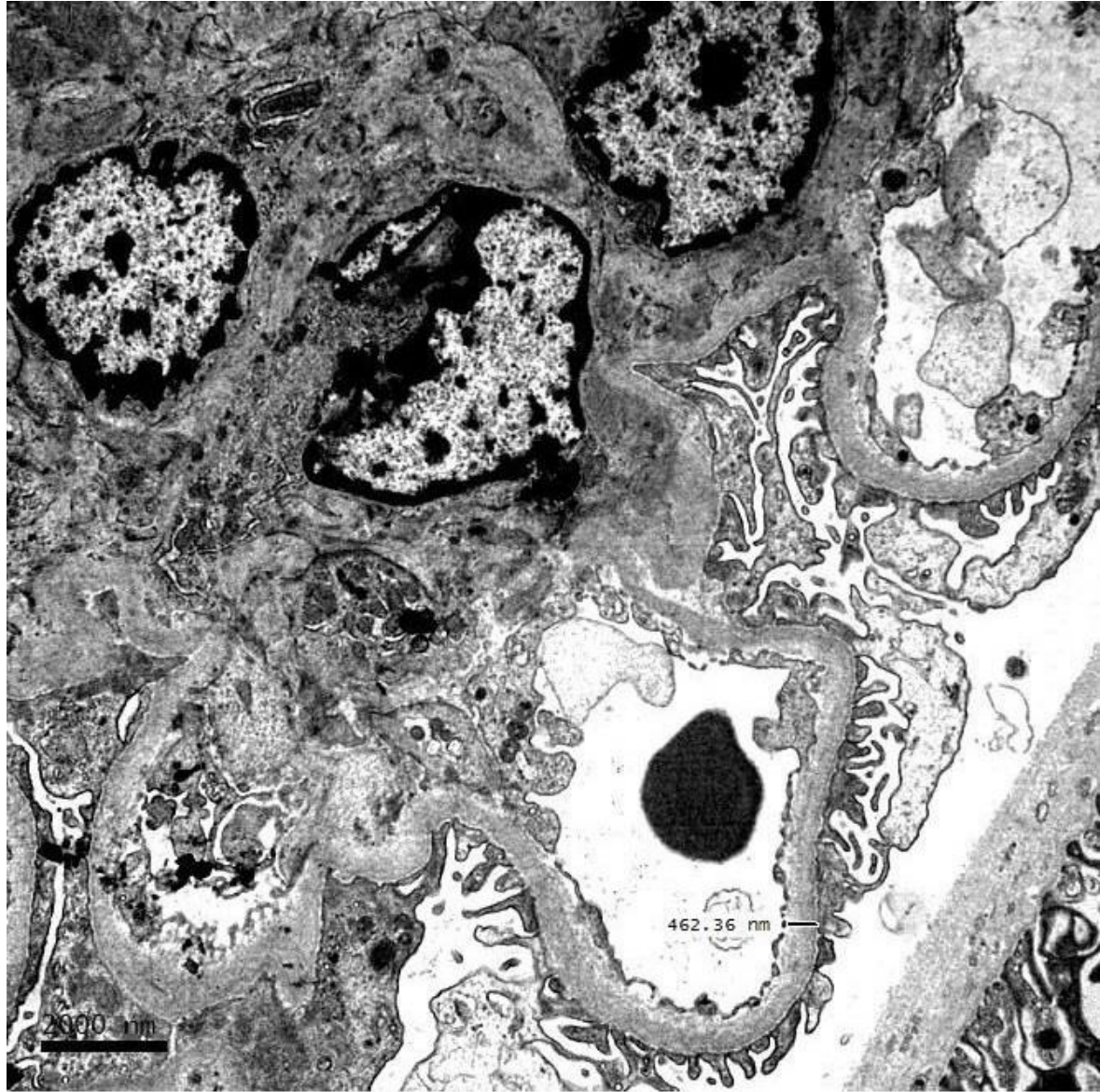


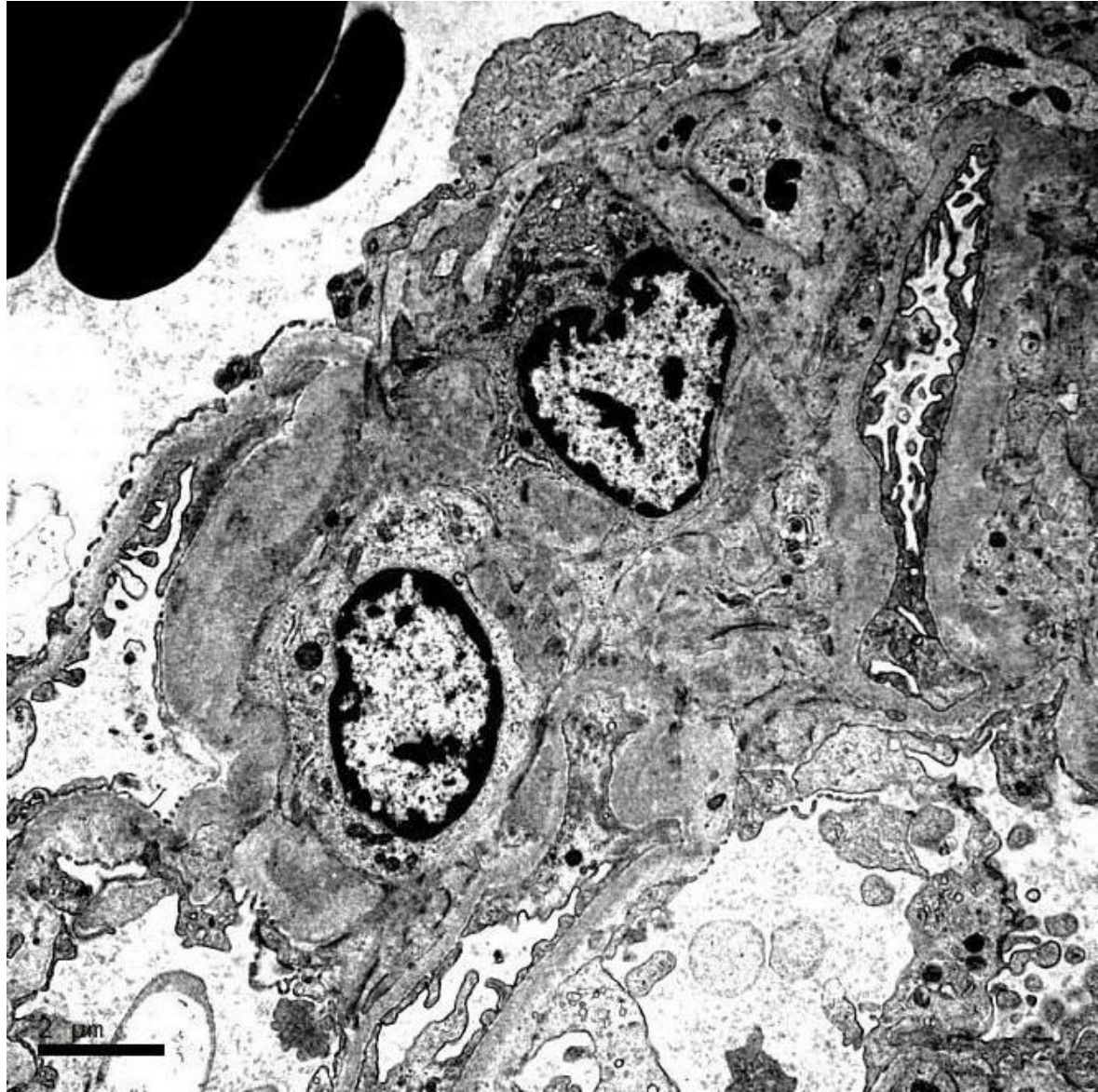
IgM

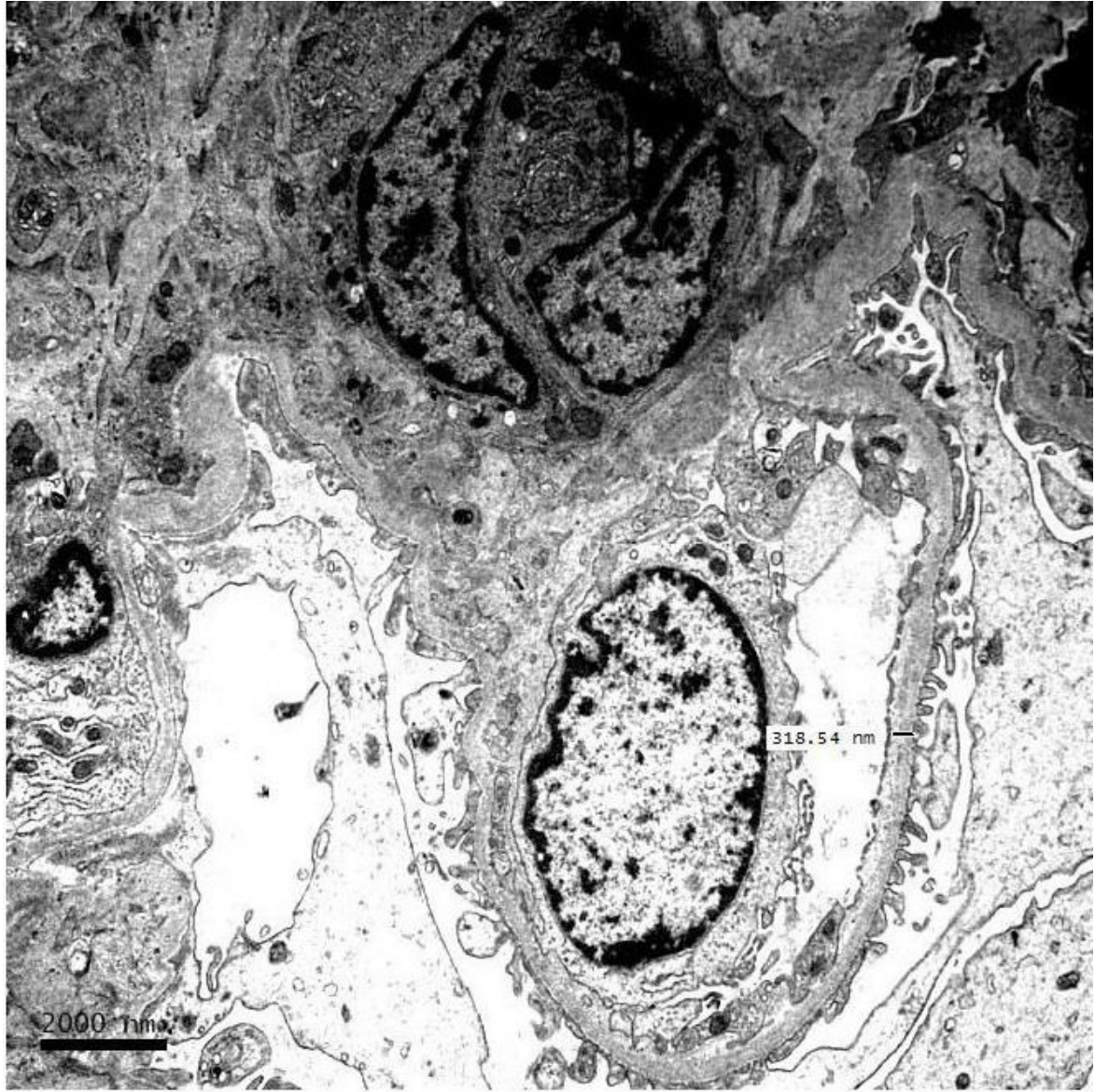


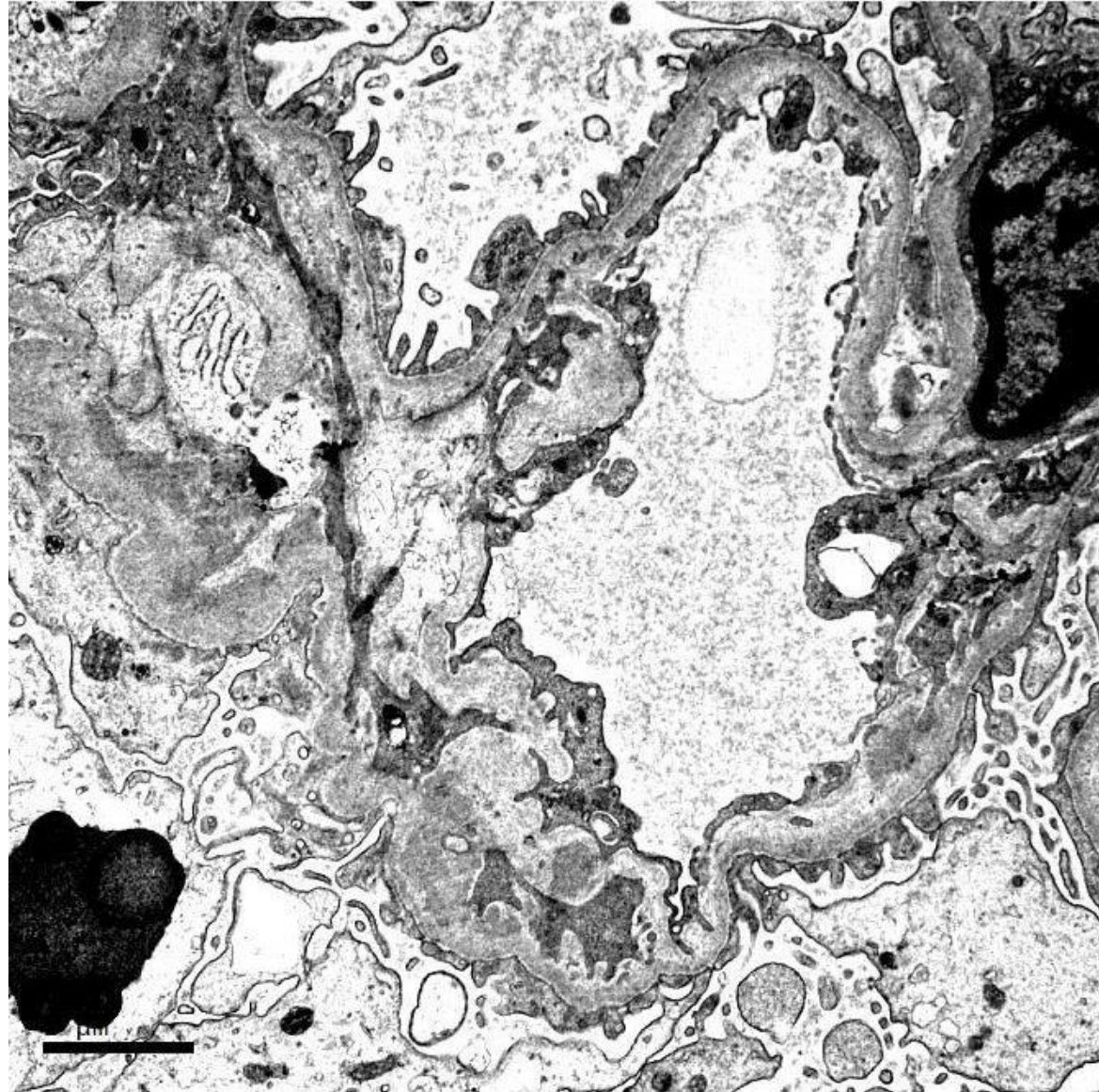
C3

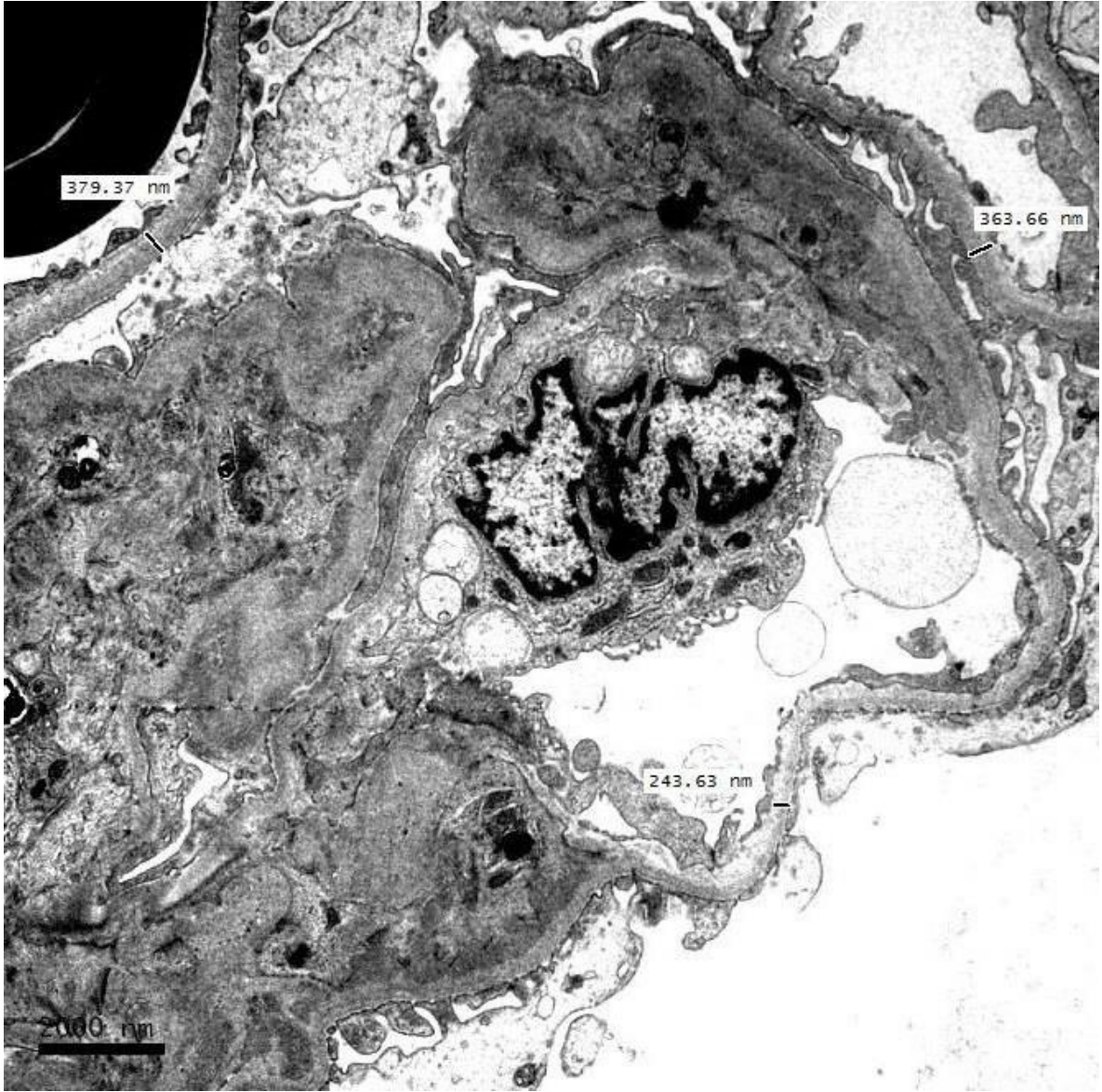














**RENAL BIOPSY
CLINICOPATHOLOGICAL
WORKSHOP 2018**



PATHOLOGY



Division of Pathology
Singapore General Hospital



Department of Renal Medicine
Singapore General Hospital



MEDICINE