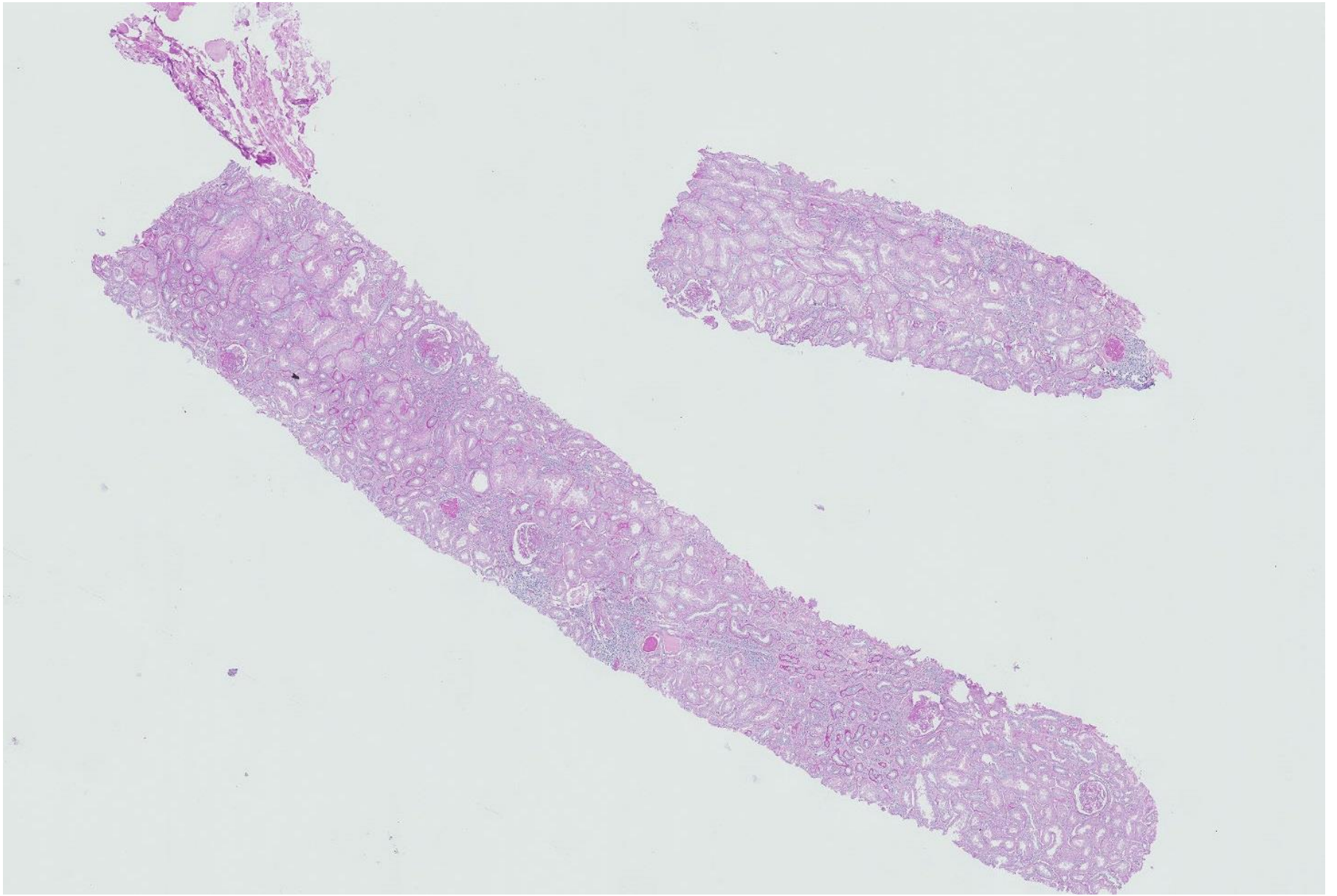
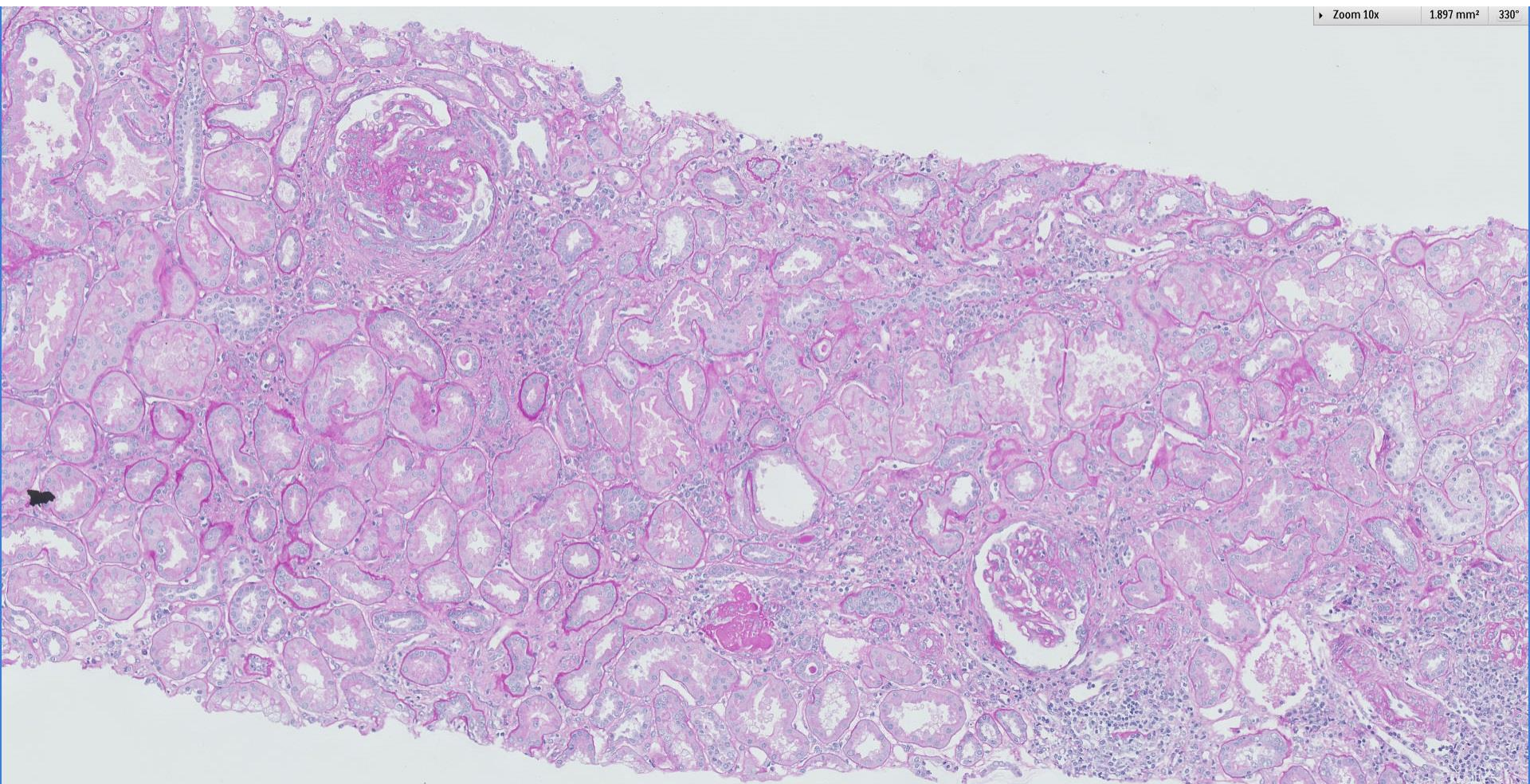


## Case 41

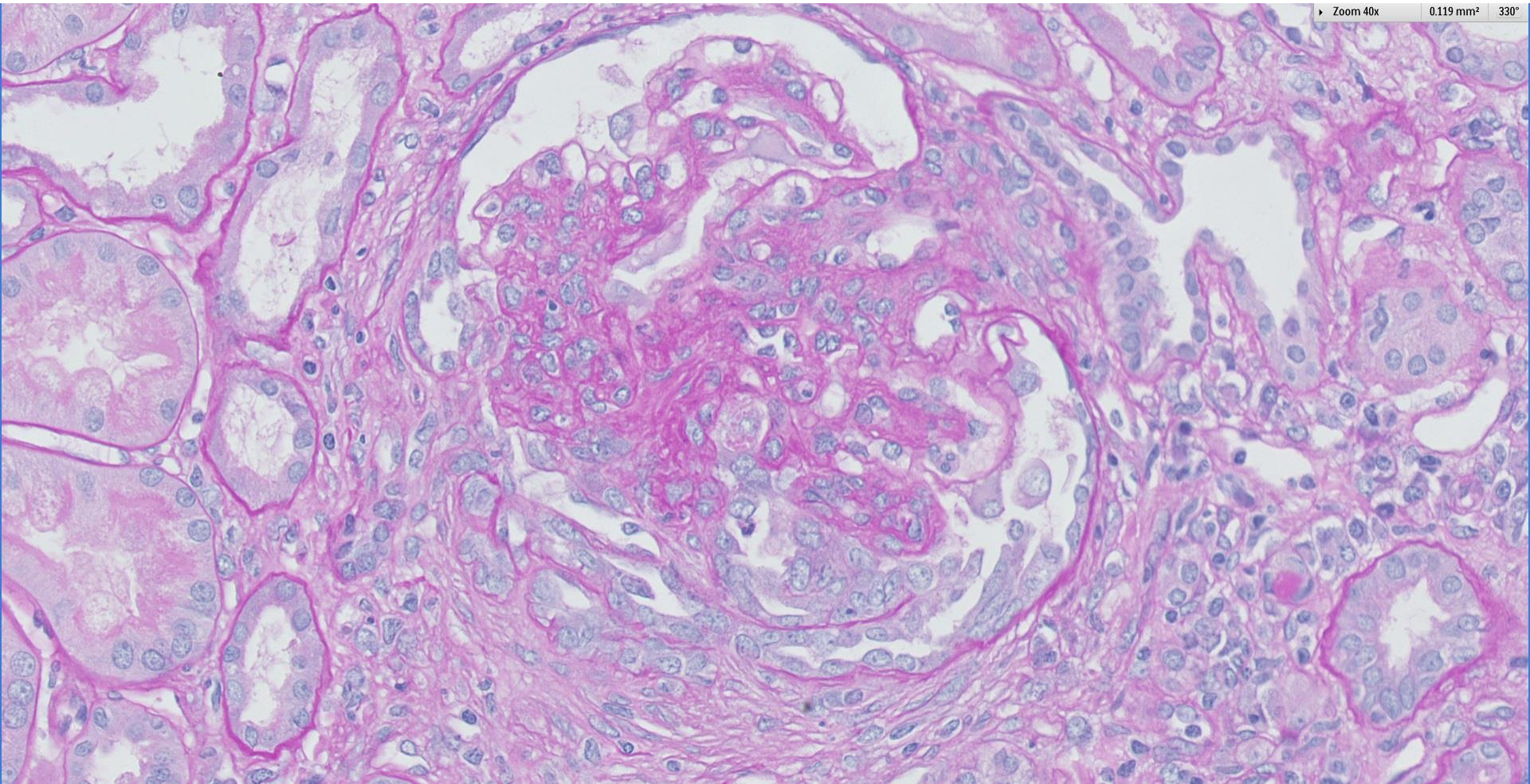
30 year old female with microscopic haematuria and proteinuria for 2 years. Serum creatinine increased from 60 to 112  $\mu\text{mol/L}$ . Autoimmune markers as well as hepatitis serologies are negative.



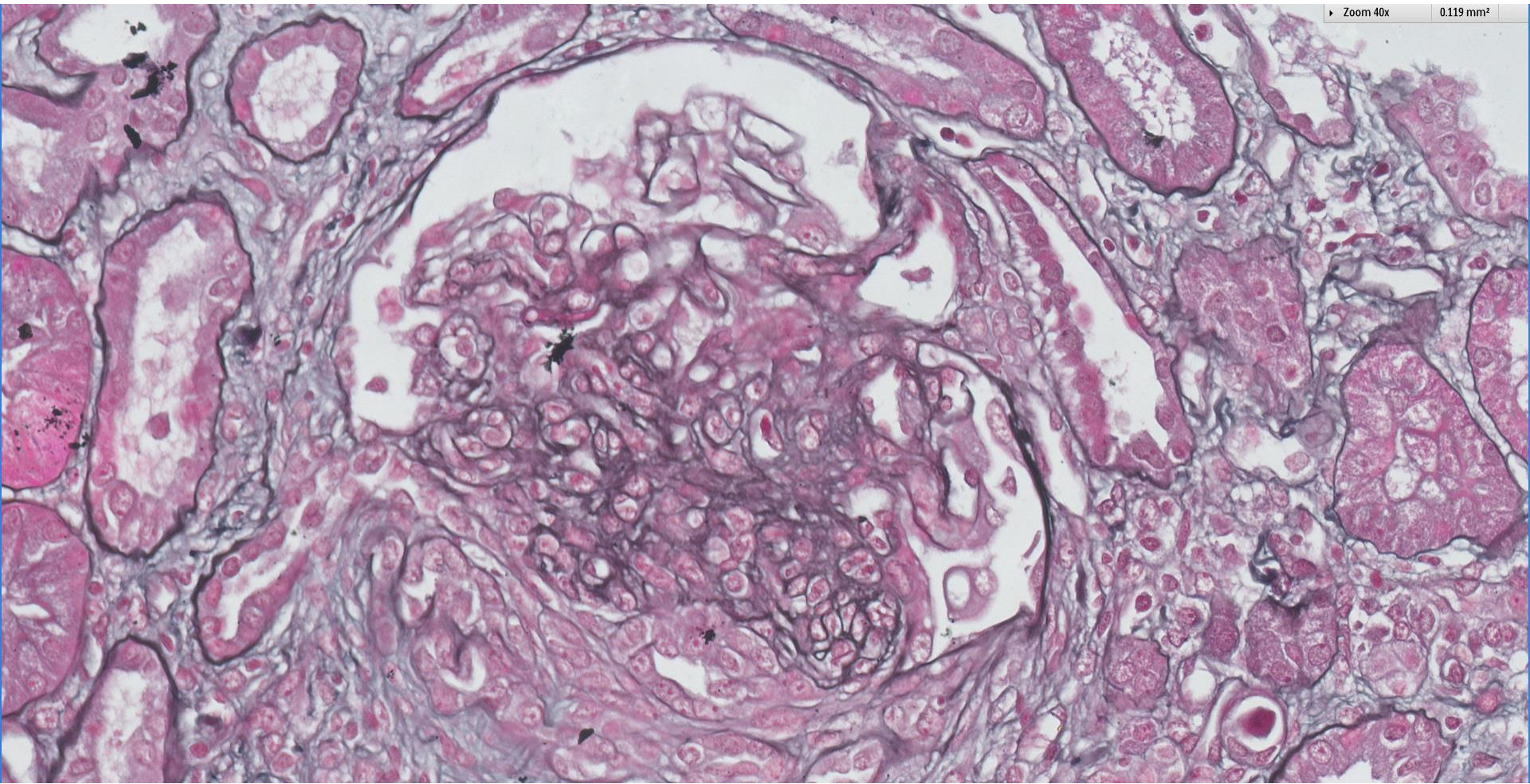






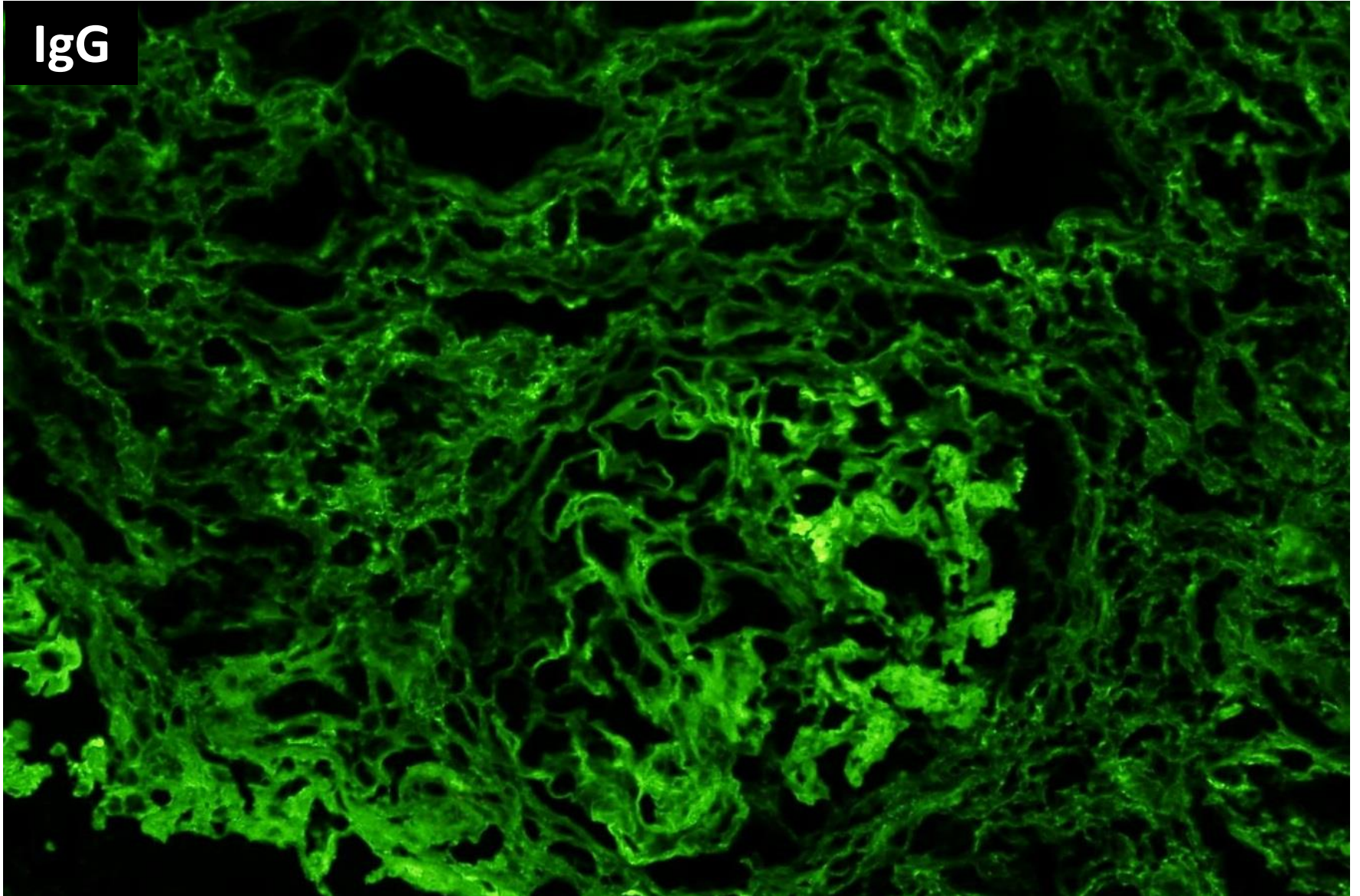




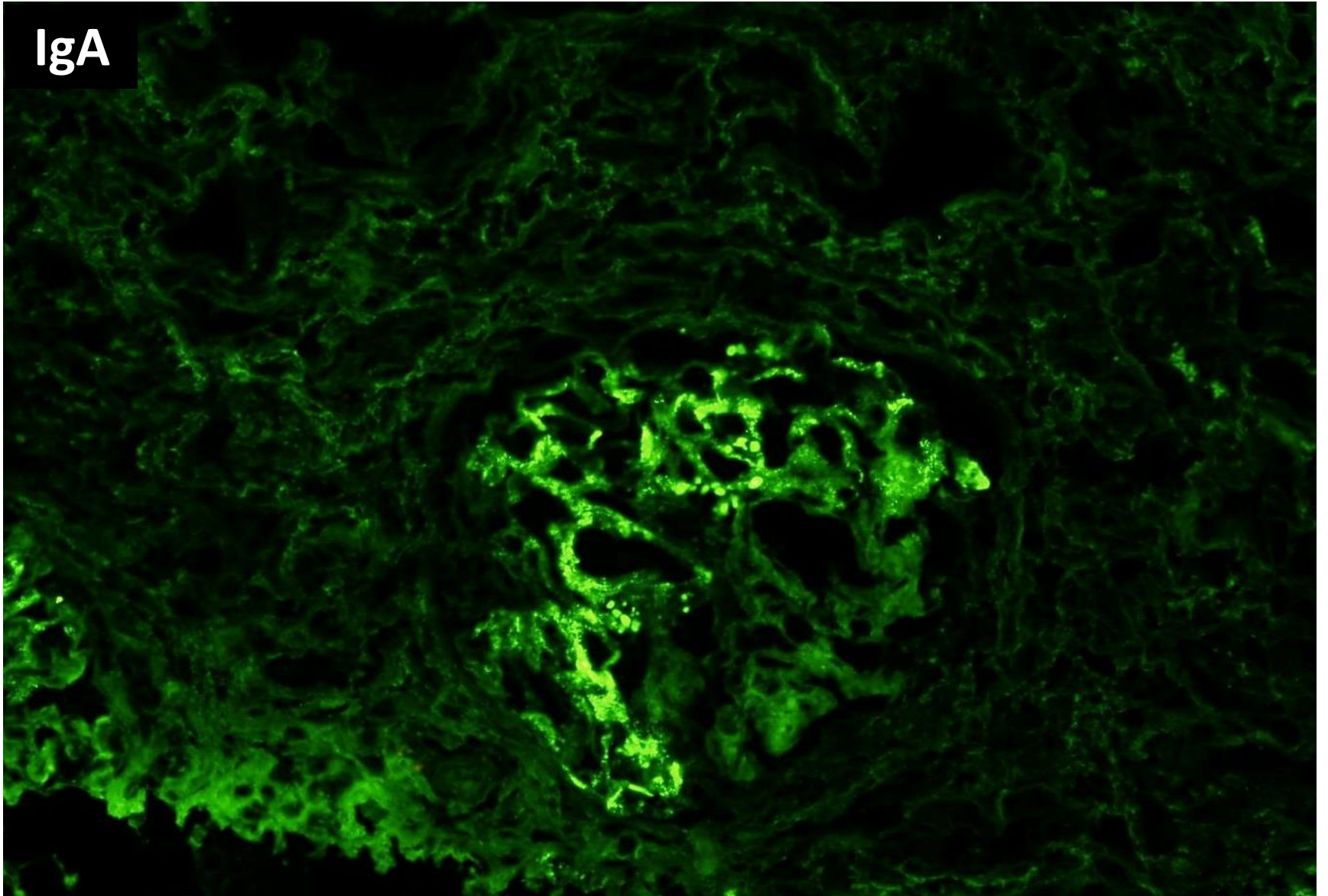




IgG

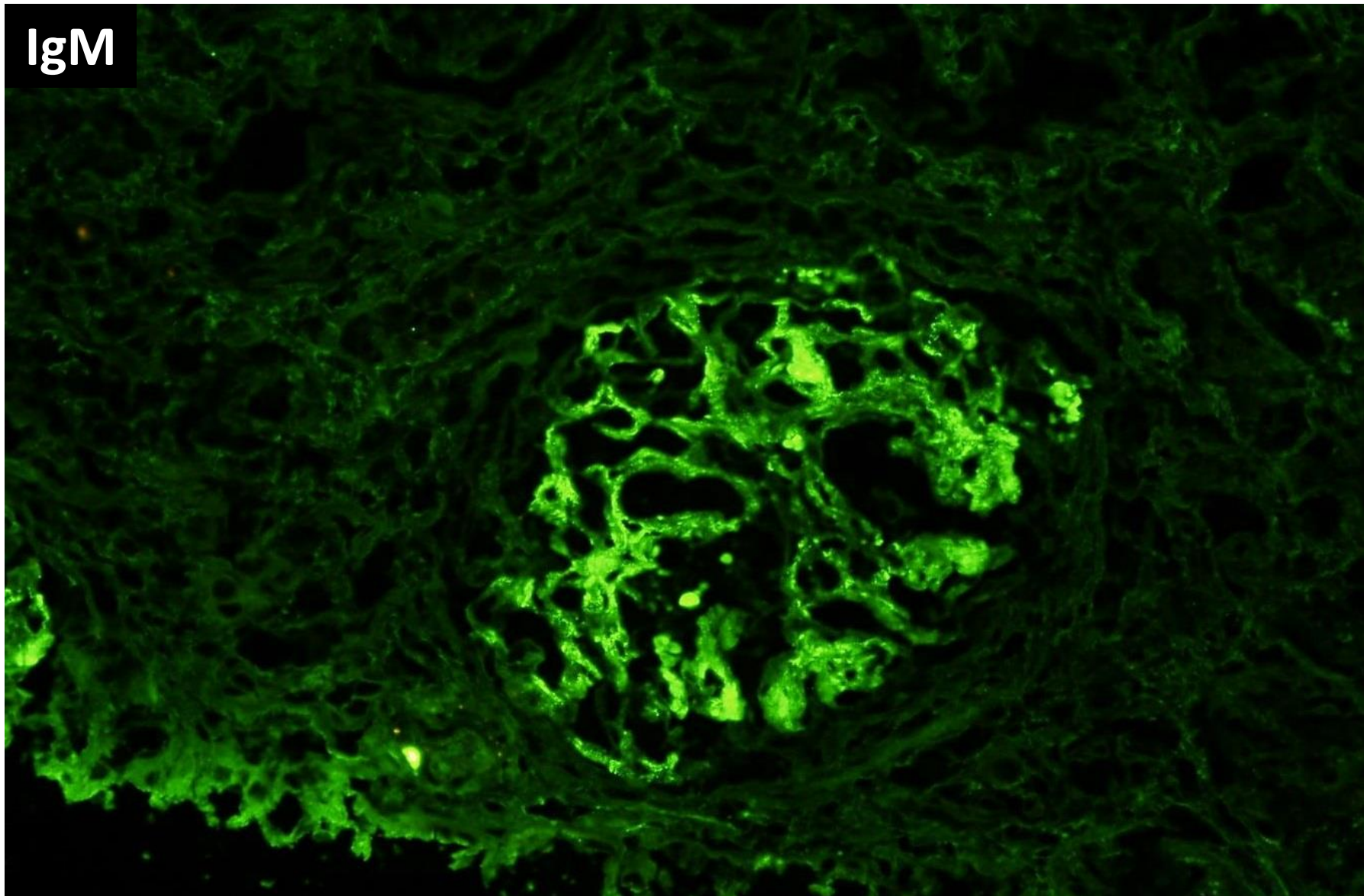


IgA



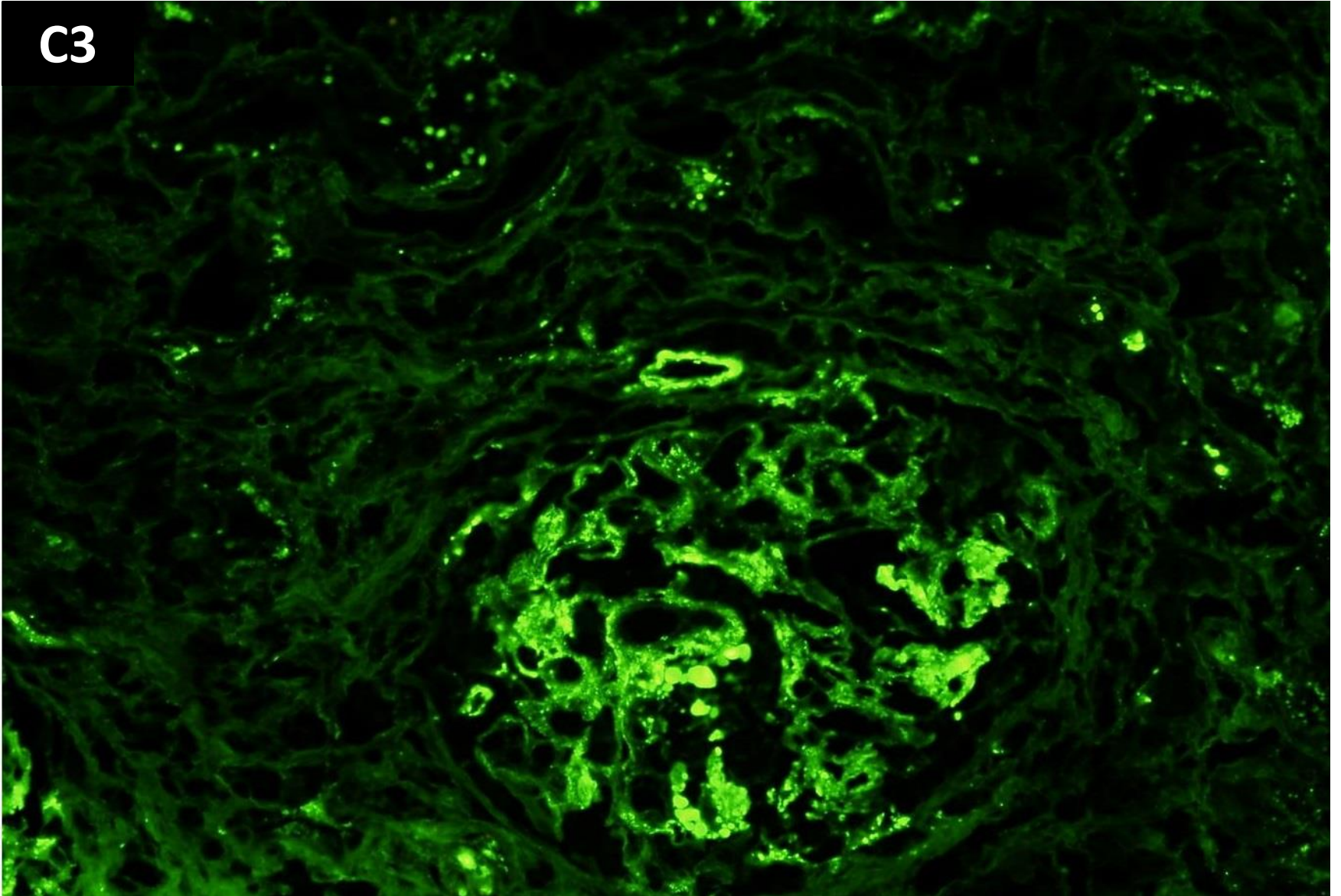


IgM

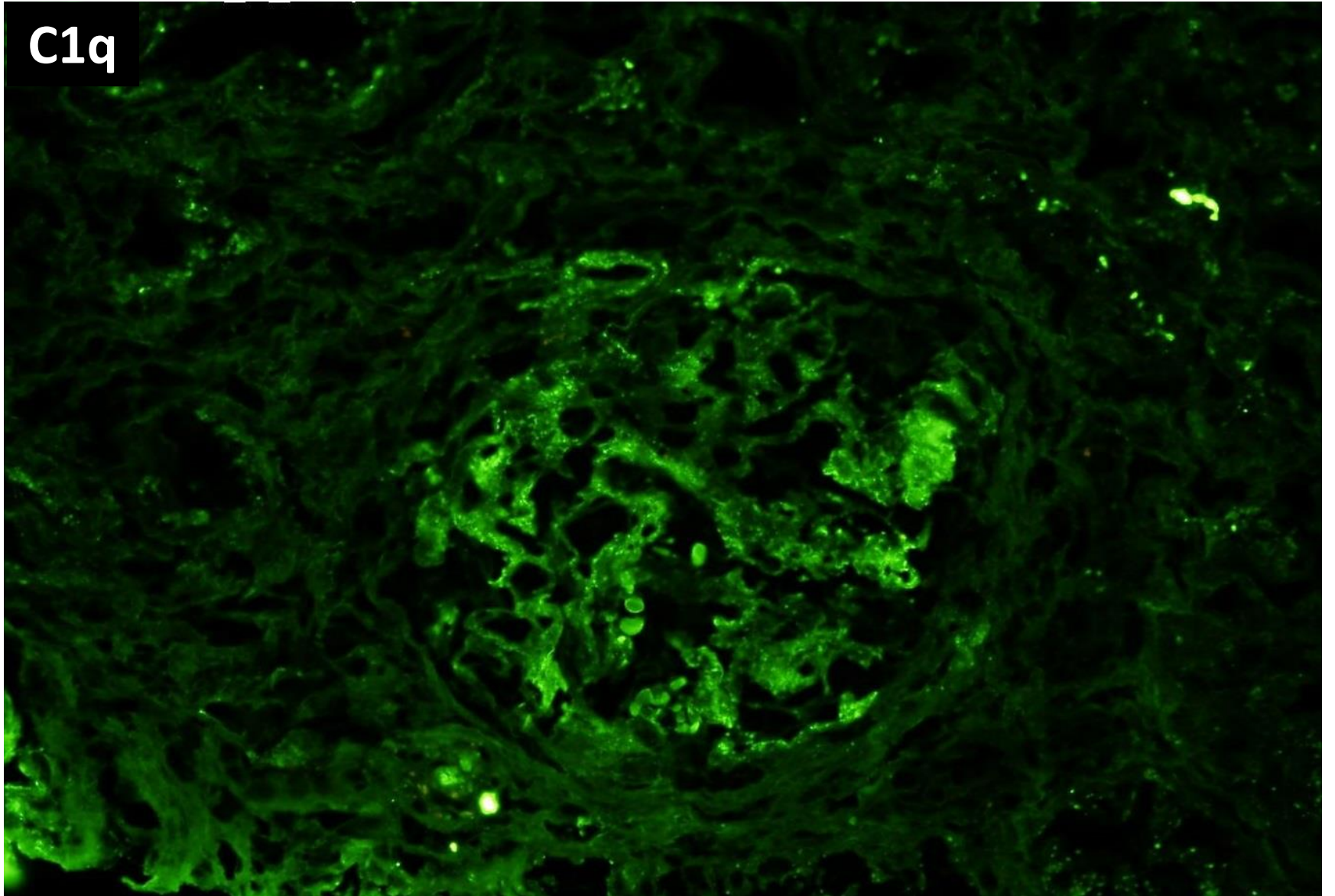




C3

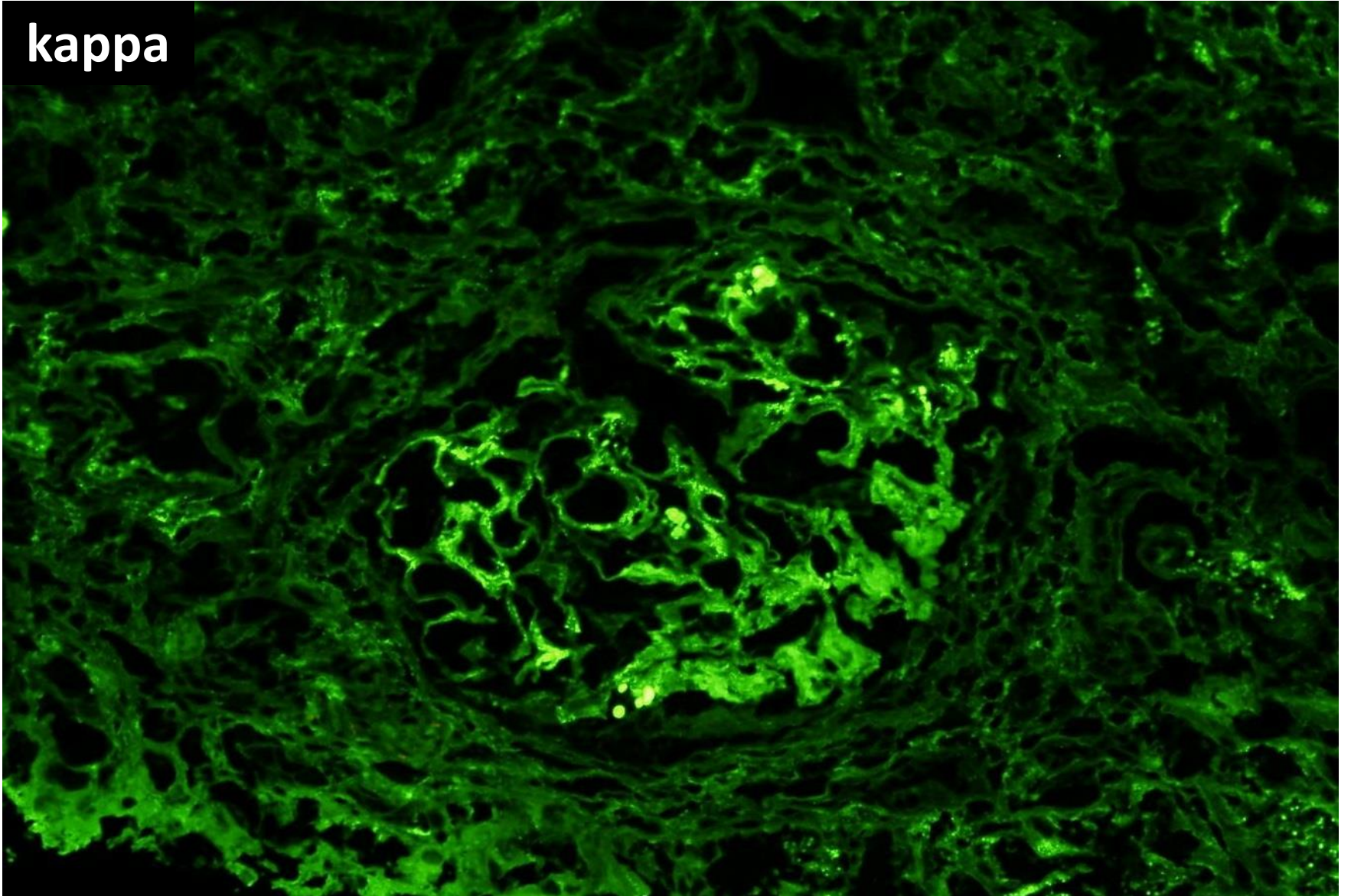


C1q

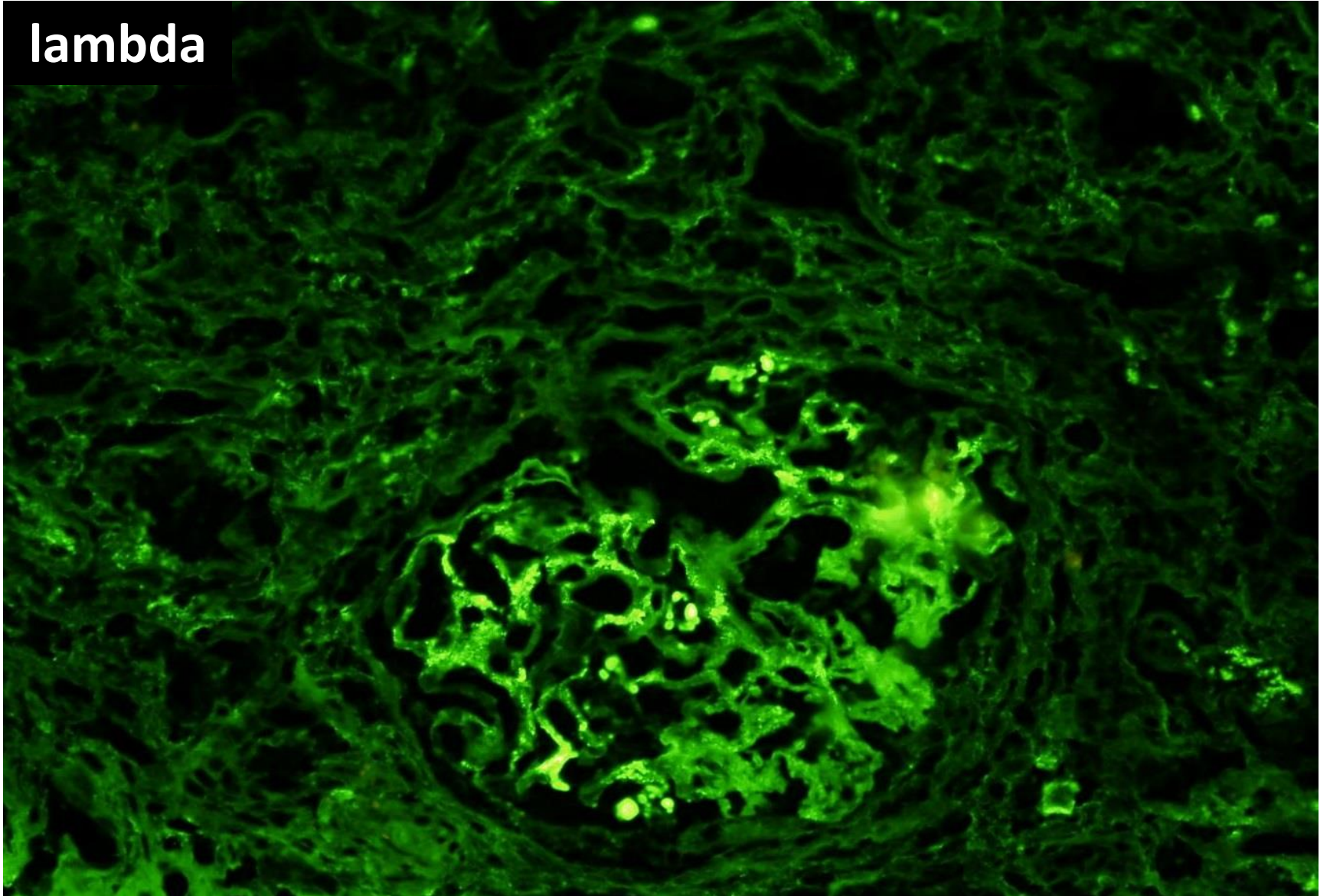




kappa



**lambda**







RENAL BIOPSY  
CLINICOPATHOLOGICAL  
WORKSHOP 2018

Electron microscopy not done.



# RENAL BIOPSY CLINICOPATHOLOGICAL WORKSHOP 2018



**PATHOLOGY**



Division of Pathology  
Singapore General Hospital



Department of Renal Medicine  
Singapore General Hospital



**MEDICINE**