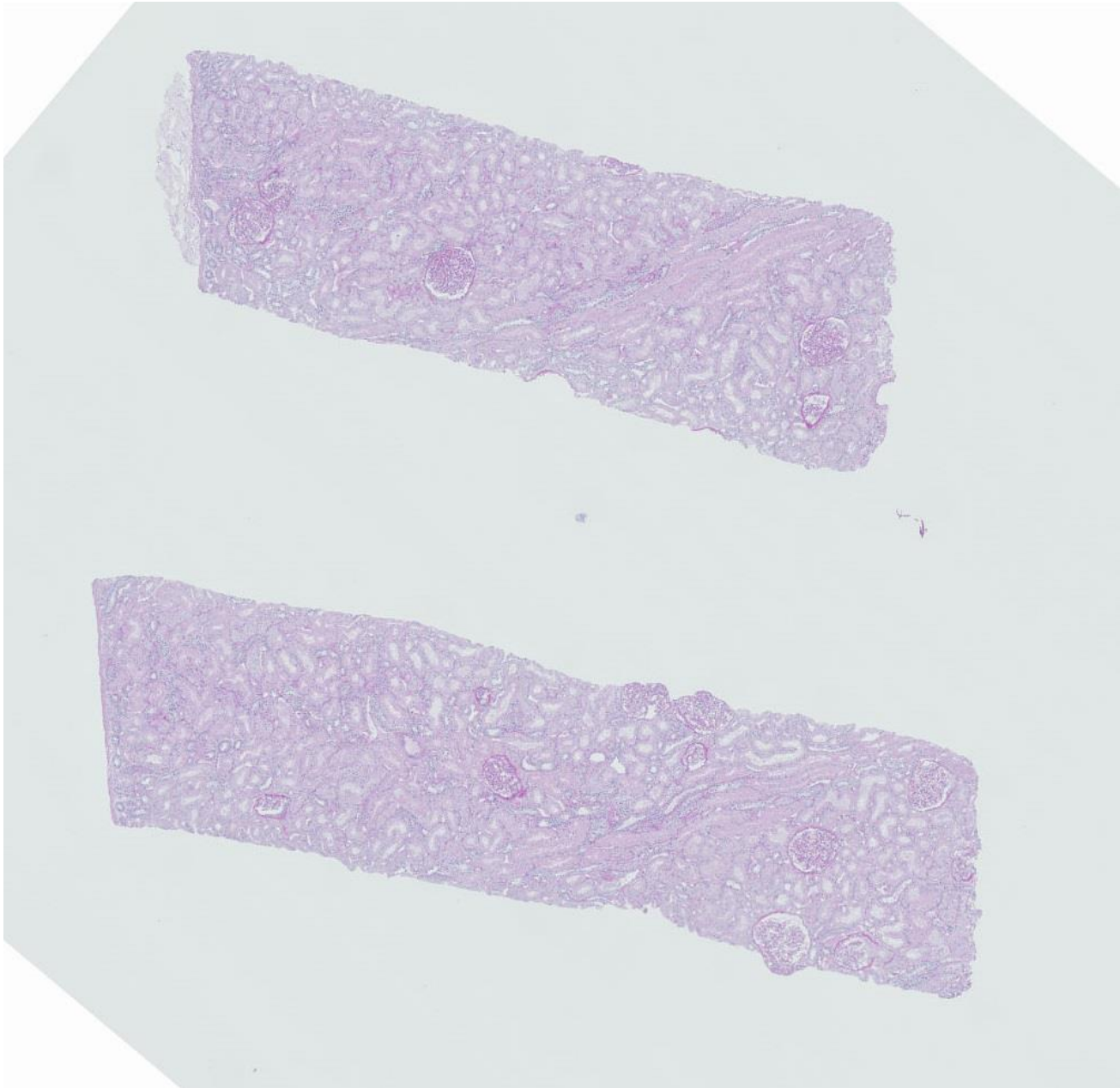
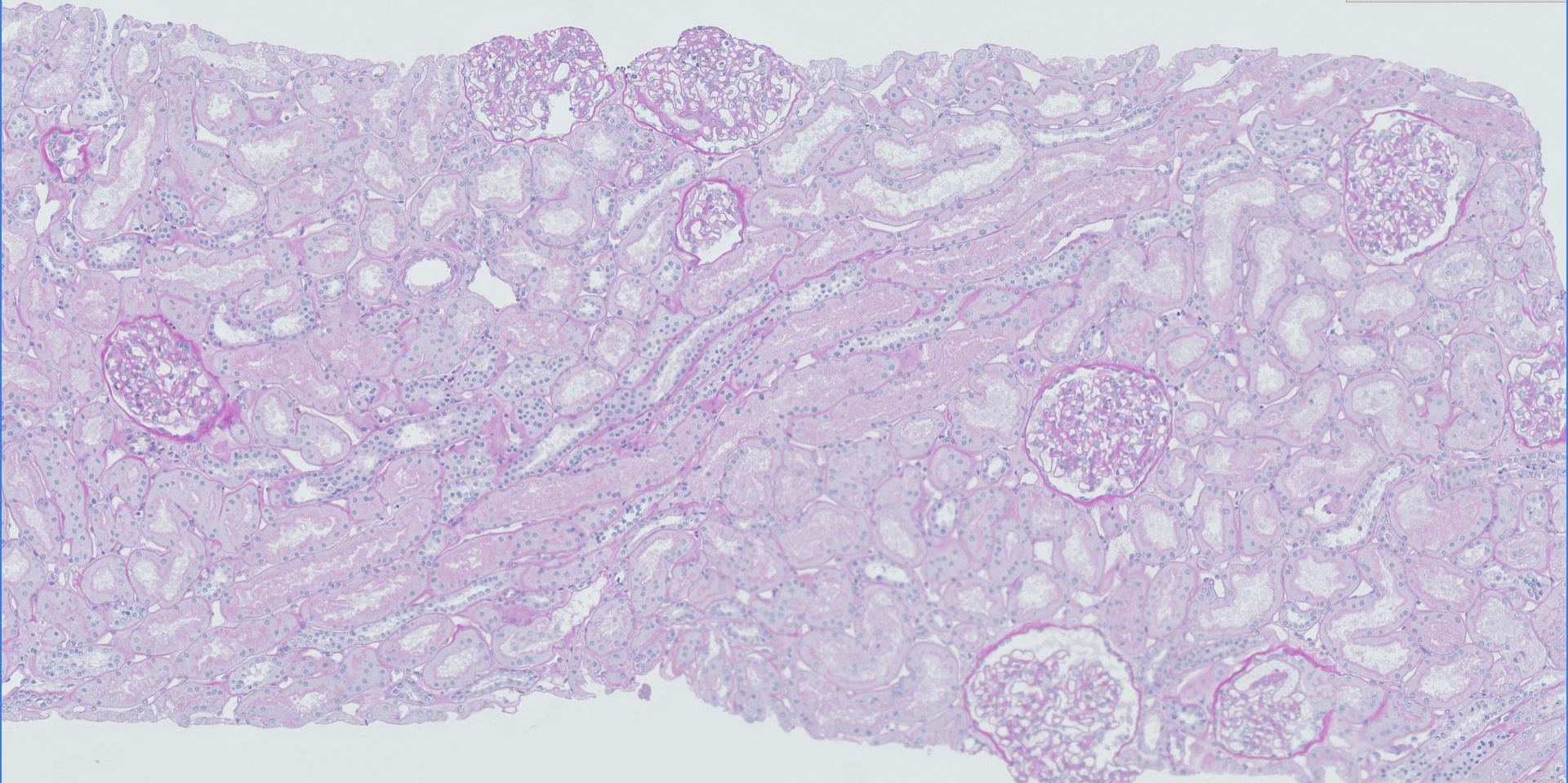
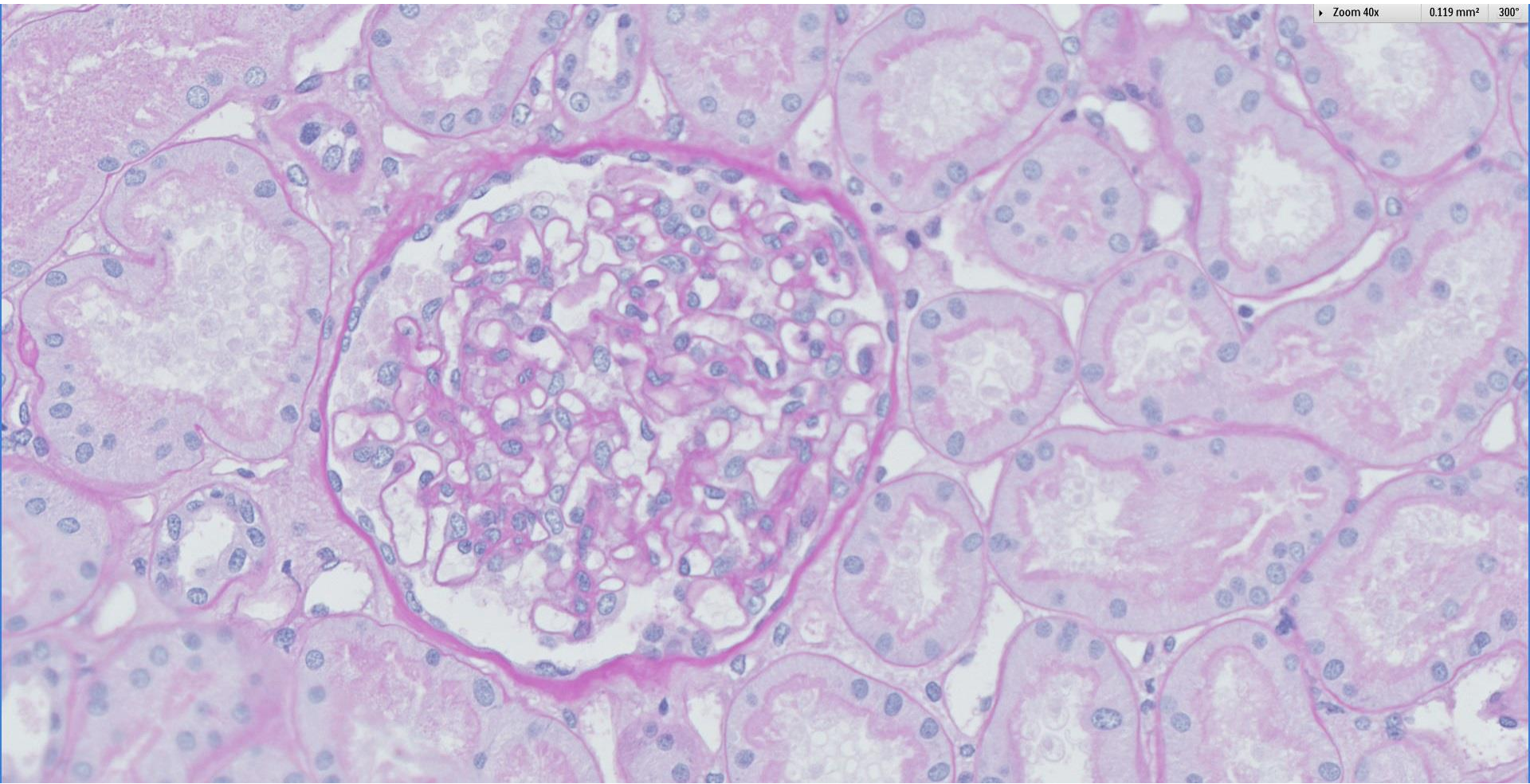


Case 40

17 year old male with childhood asthma now presents with nephrotic syndrome. No haematuria. Serum complements are normal. Virology and autoimmune markers are negative.

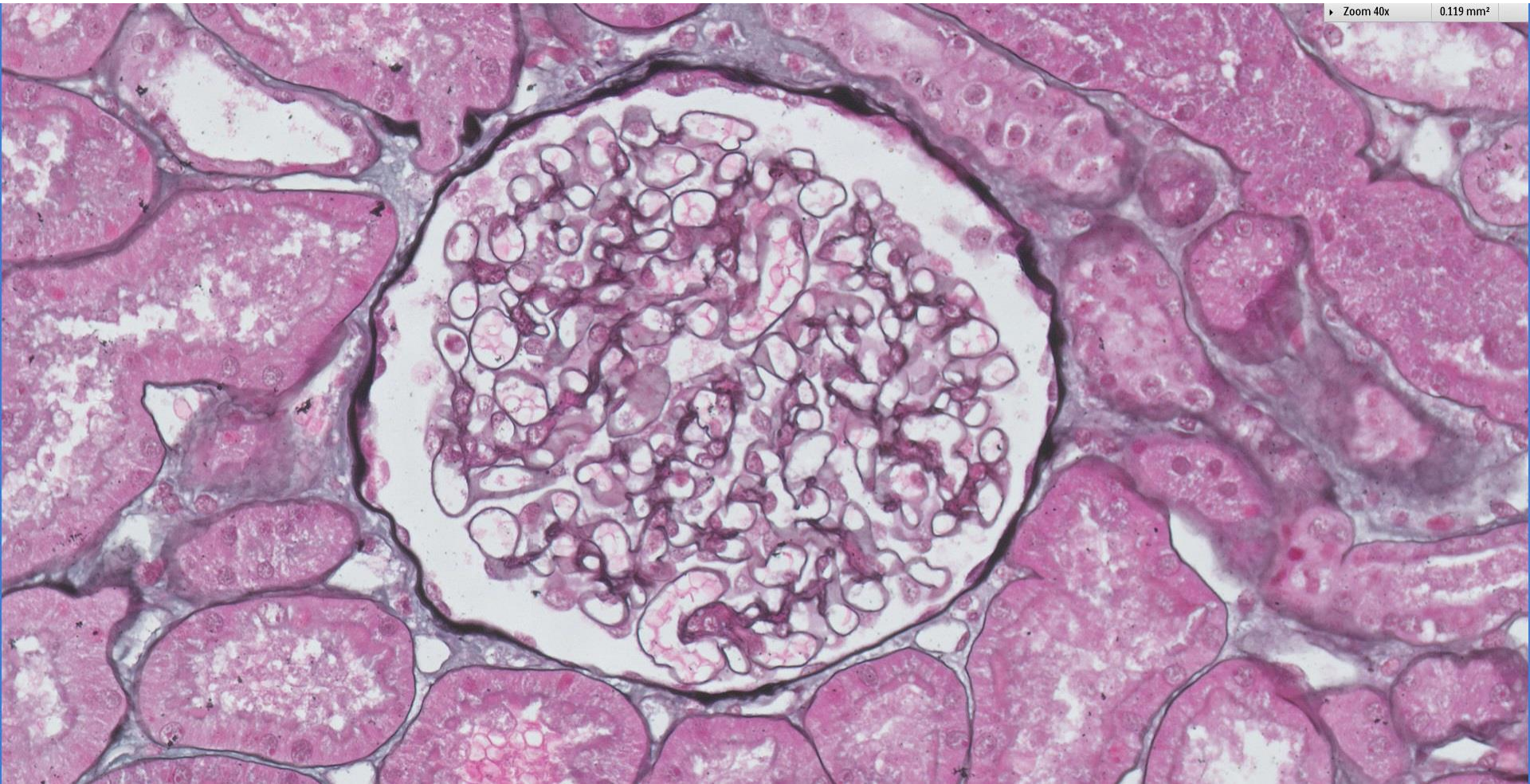




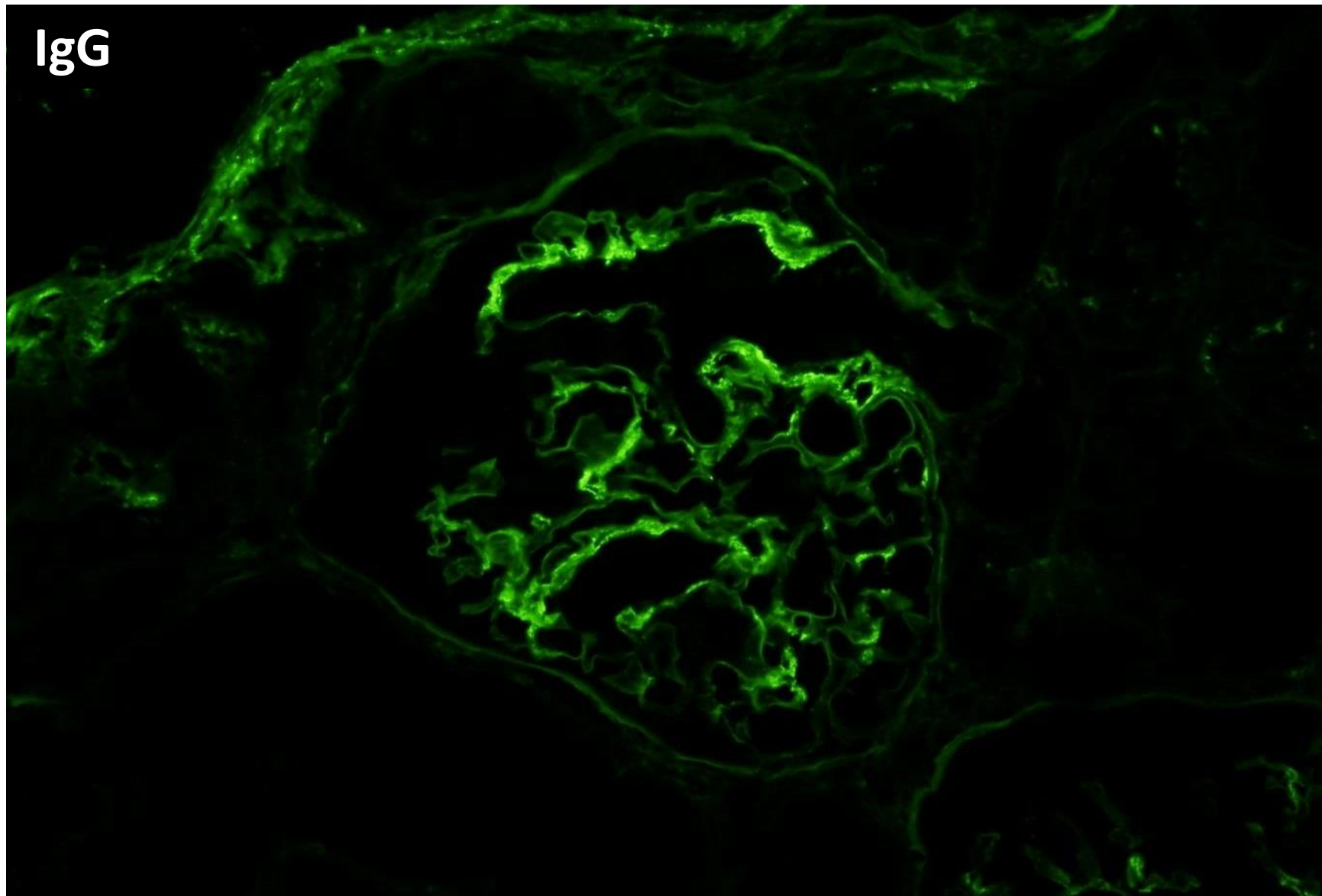


Zoom 40x

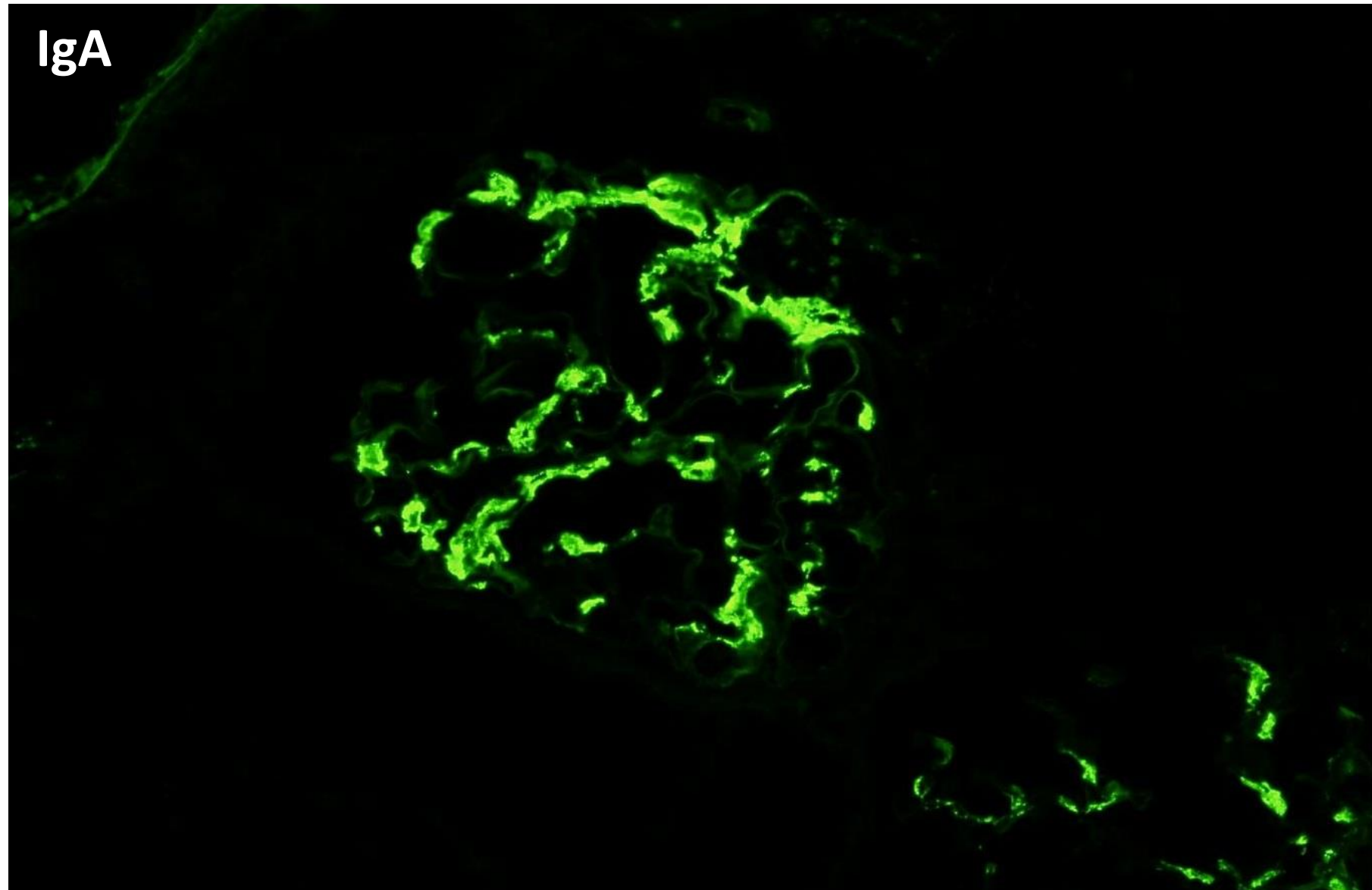
0.119 mm²



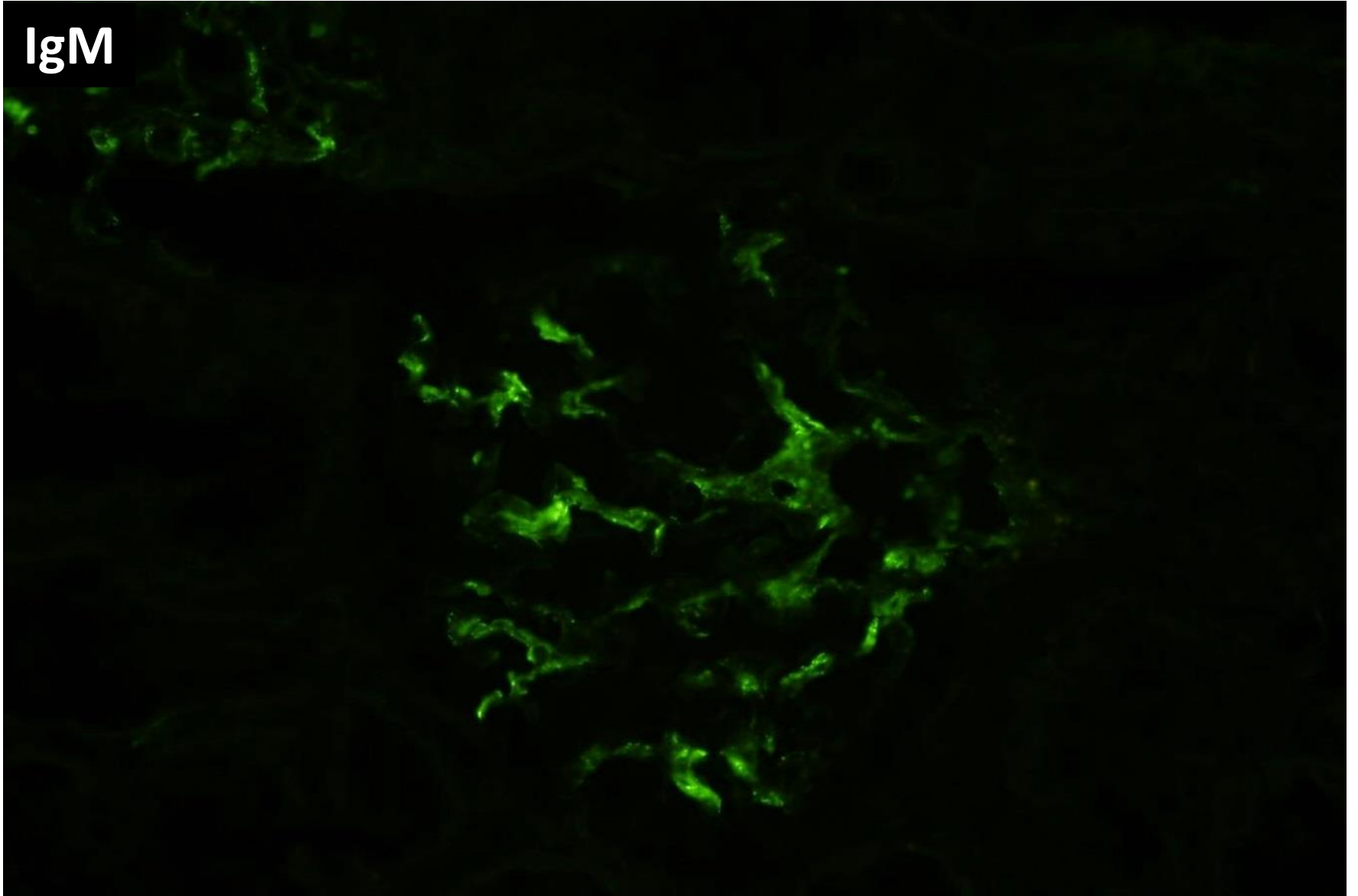
IgG



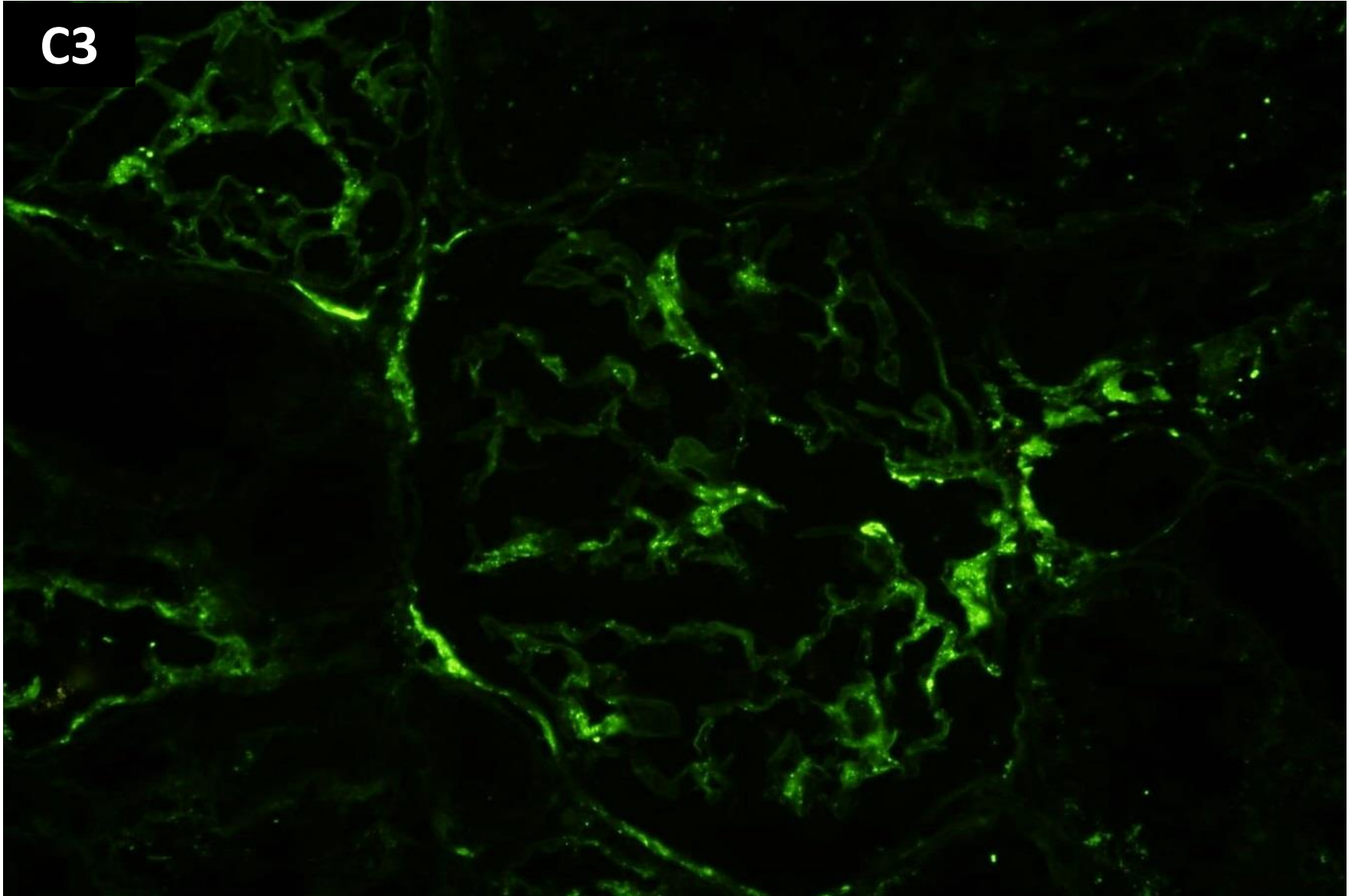
IgA



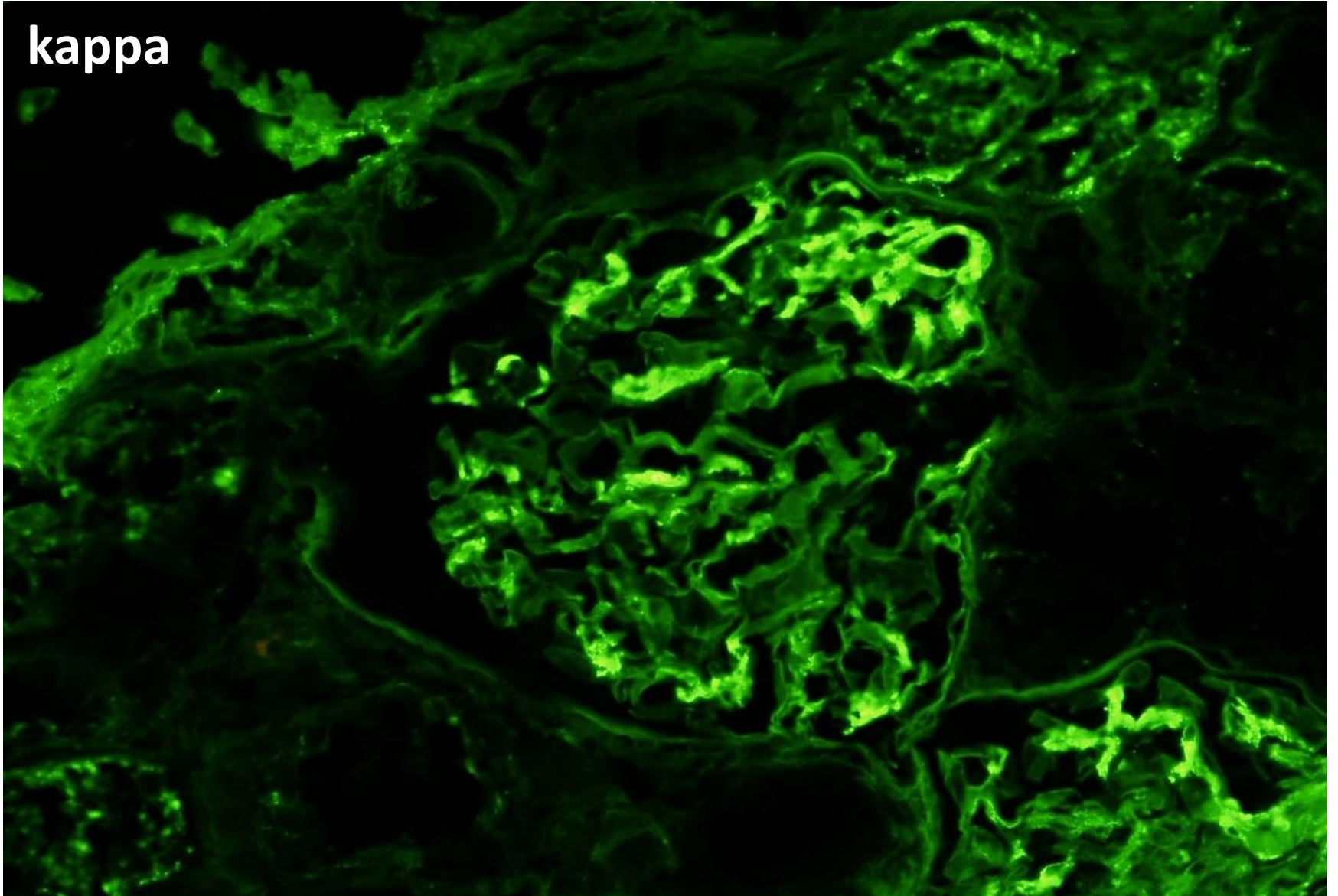
IgM



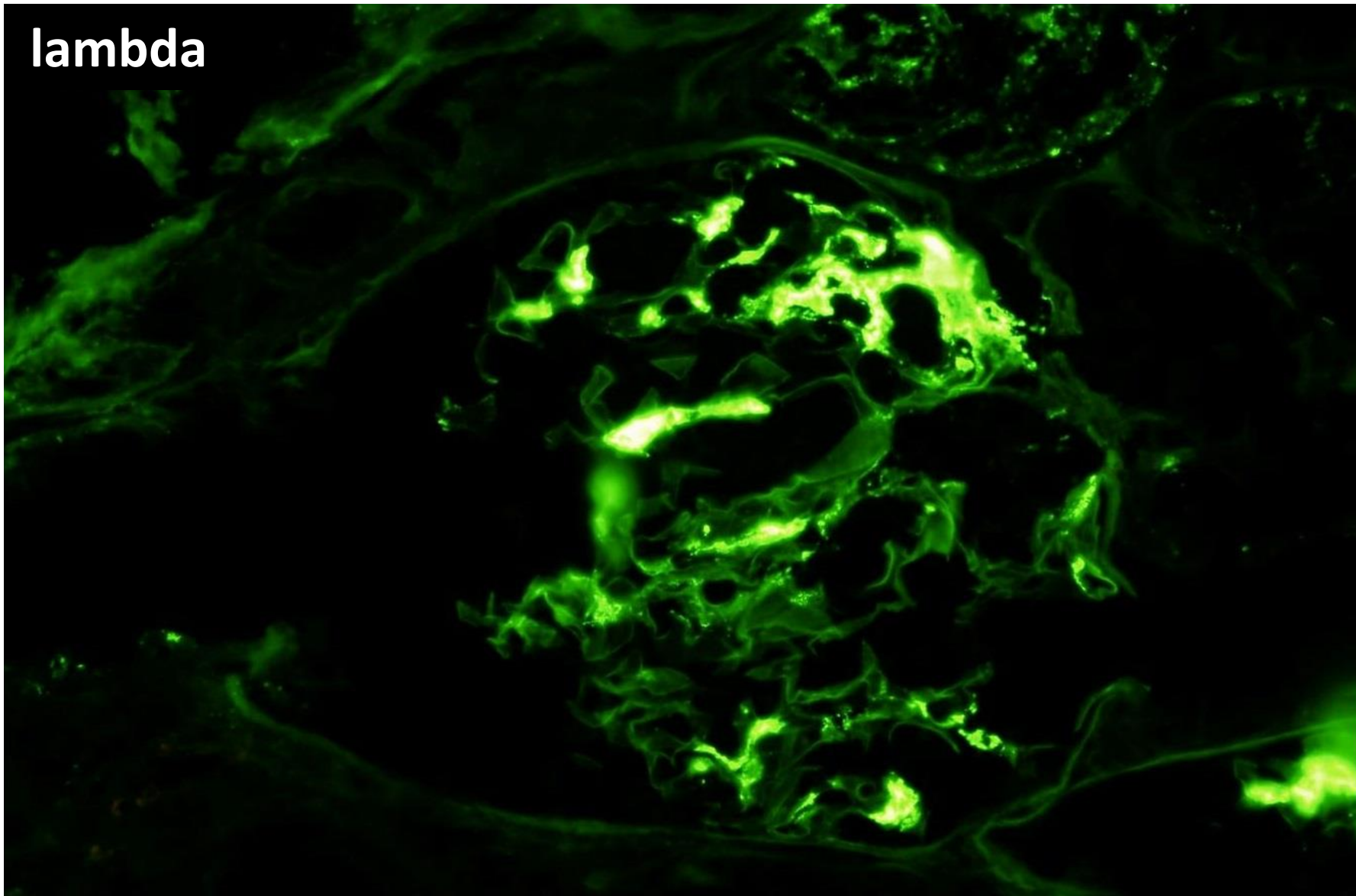
C3

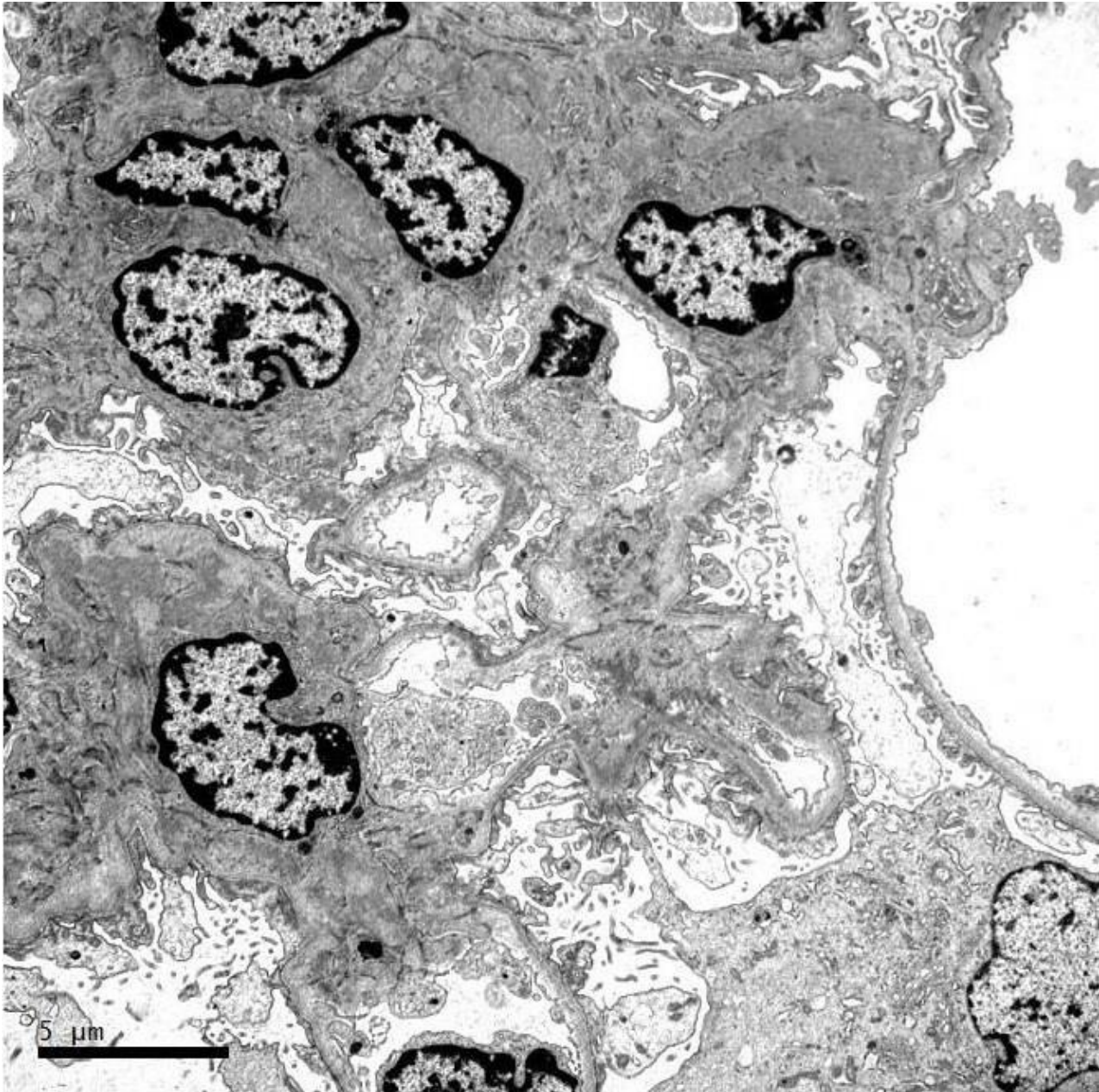


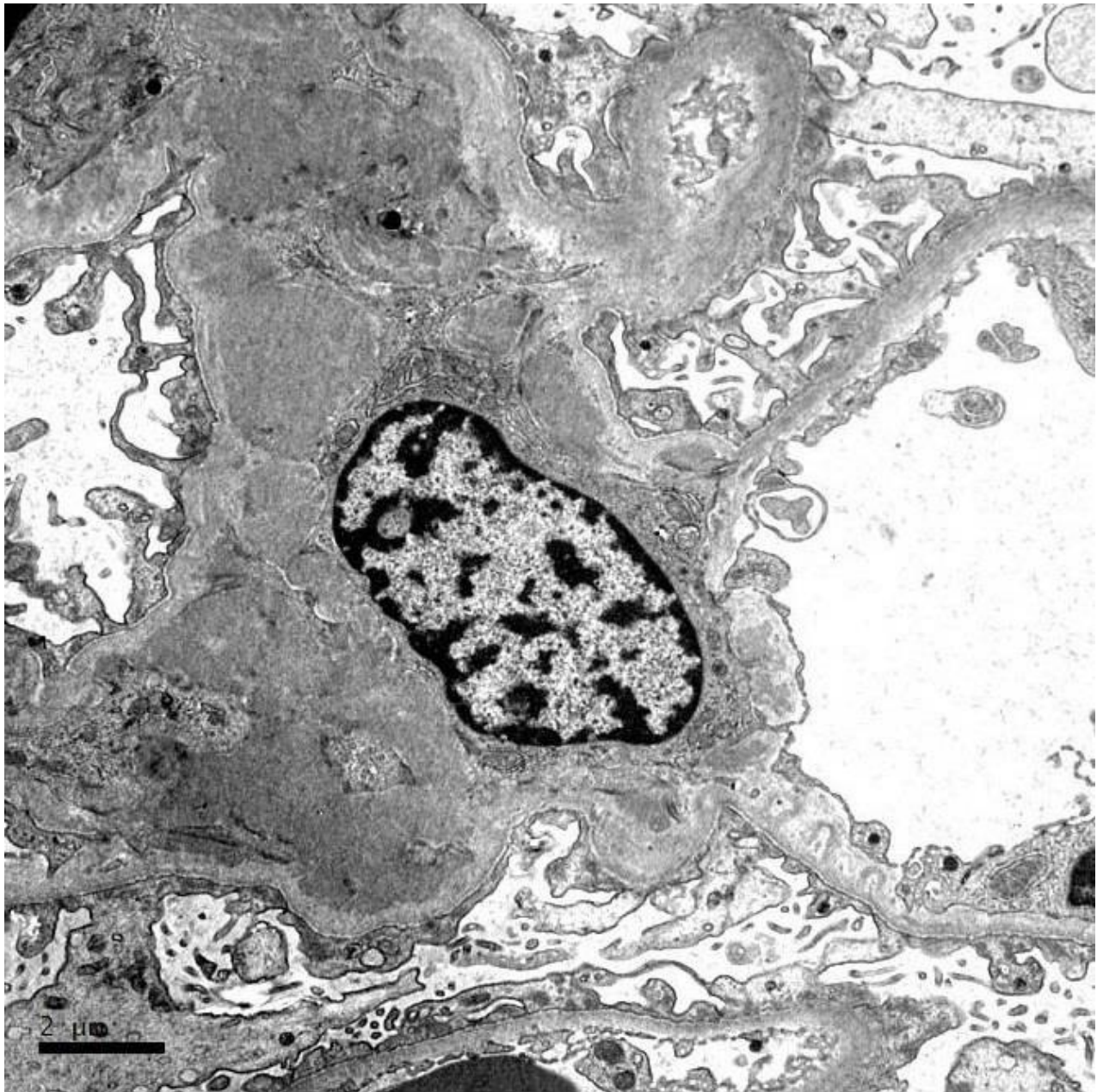
kappa

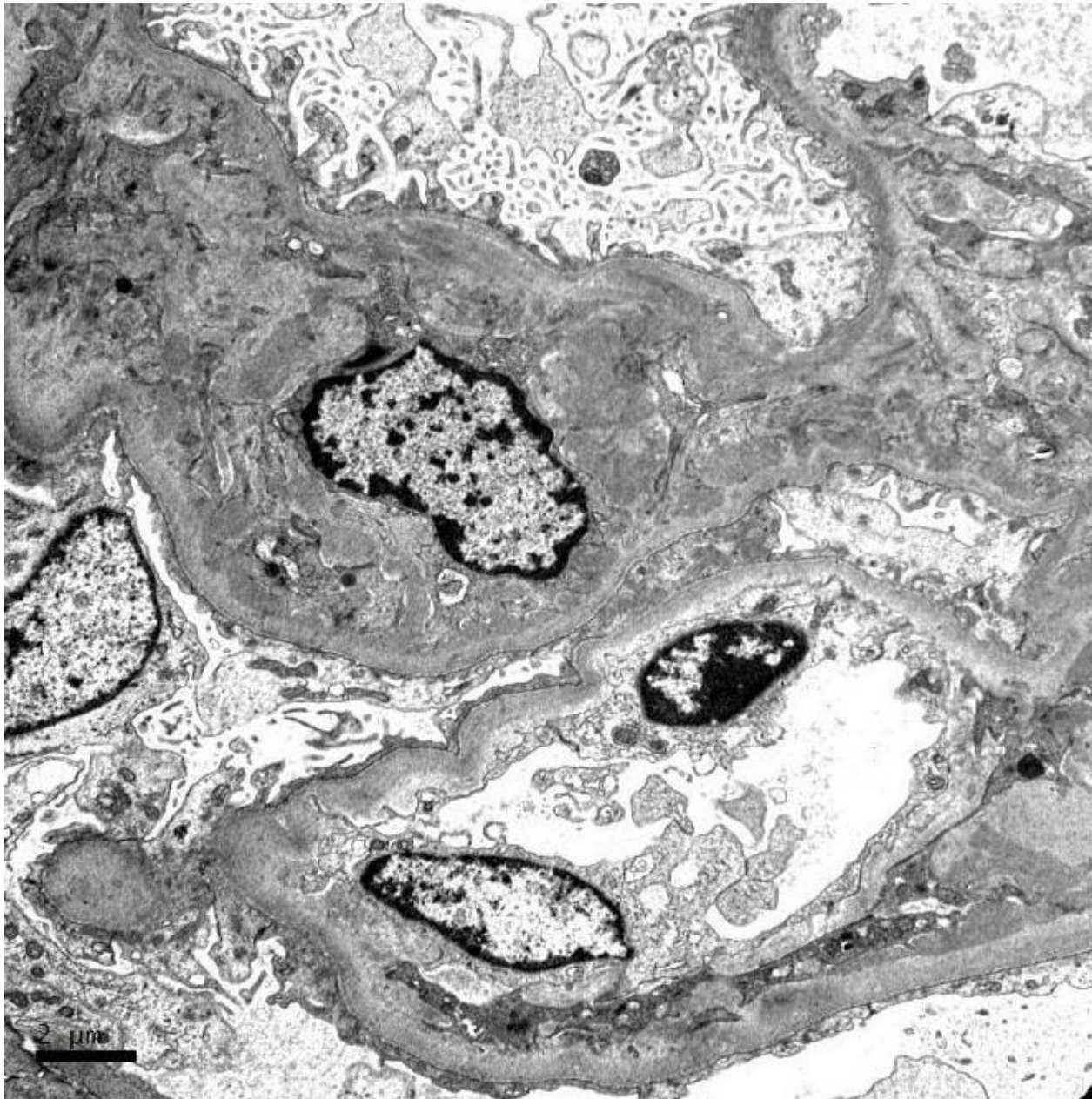


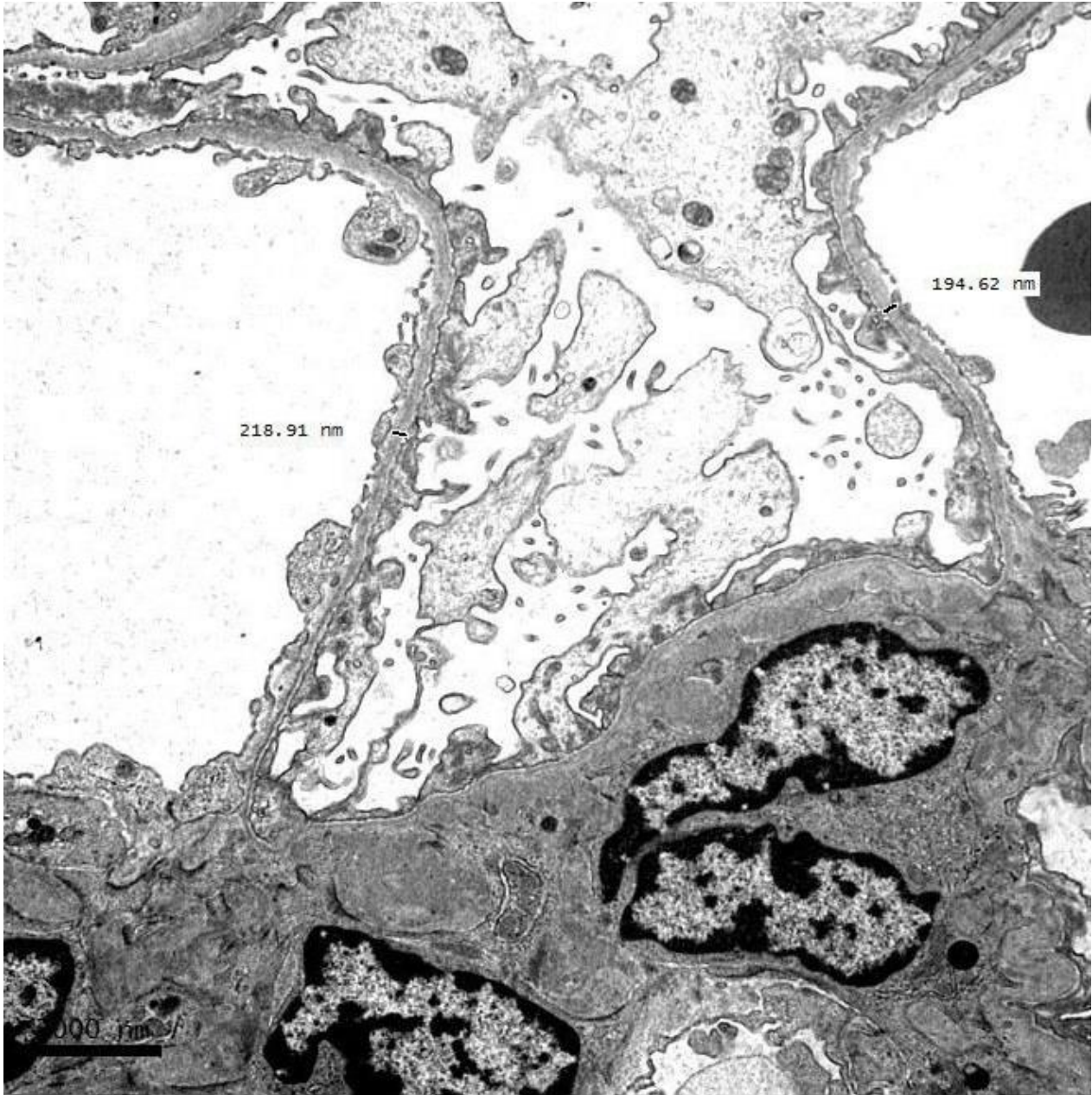
lambda

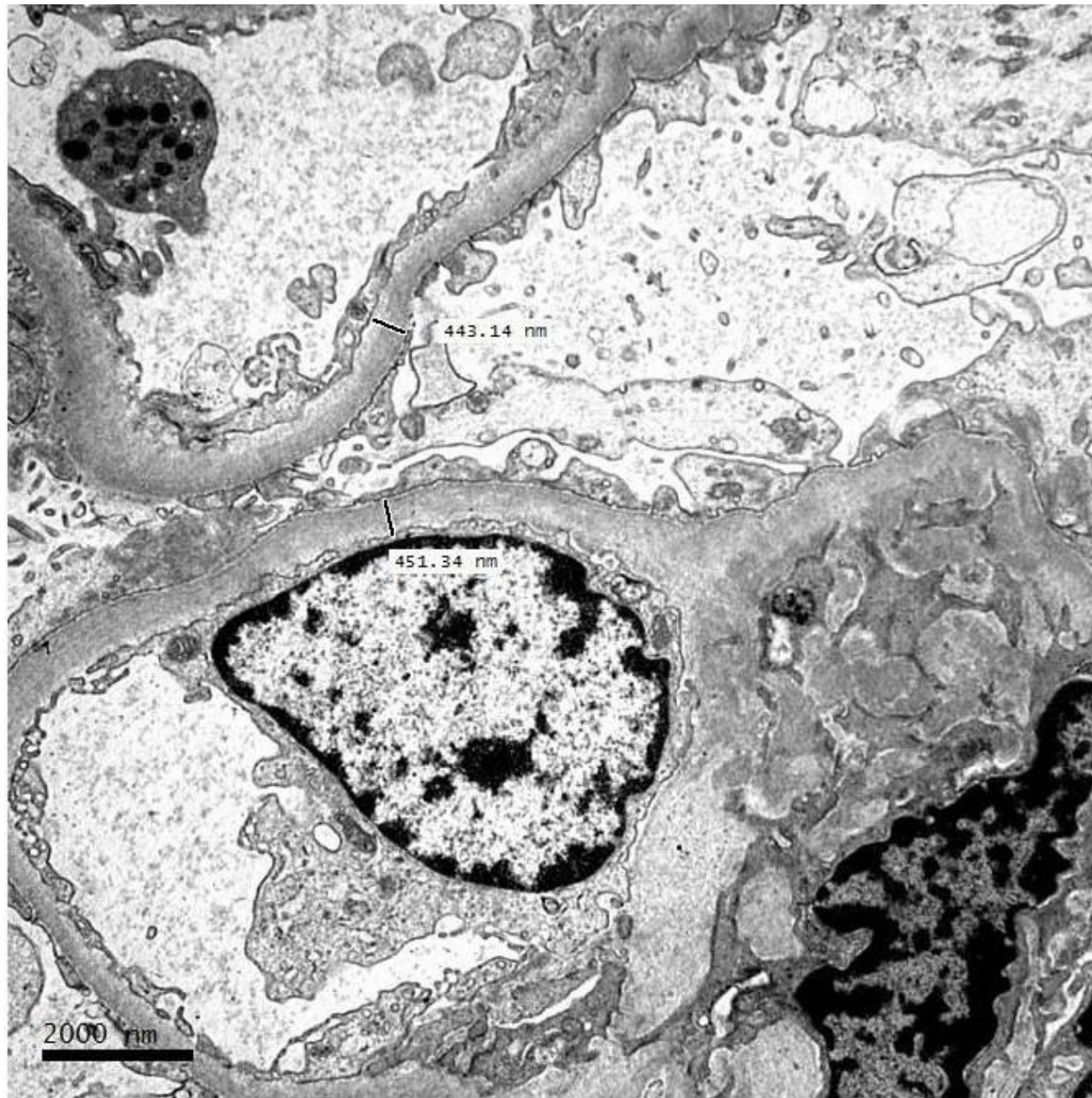














RENAL BIOPSY CLINICOPATHOLOGICAL WORKSHOP 2018



PATHOLOGY



Division of Pathology
Singapore General Hospital



Department of Renal Medicine
Singapore General Hospital



MEDICINE