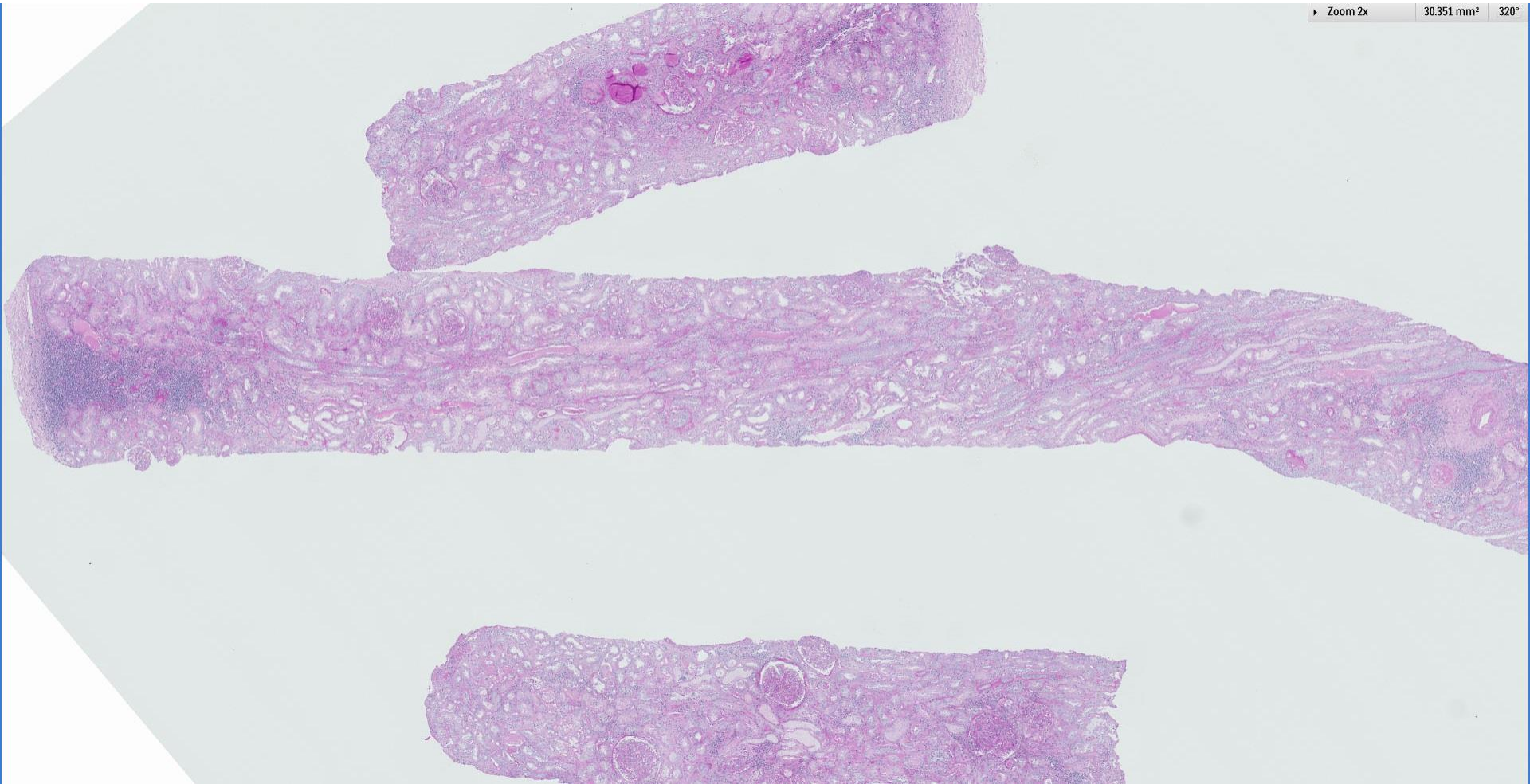
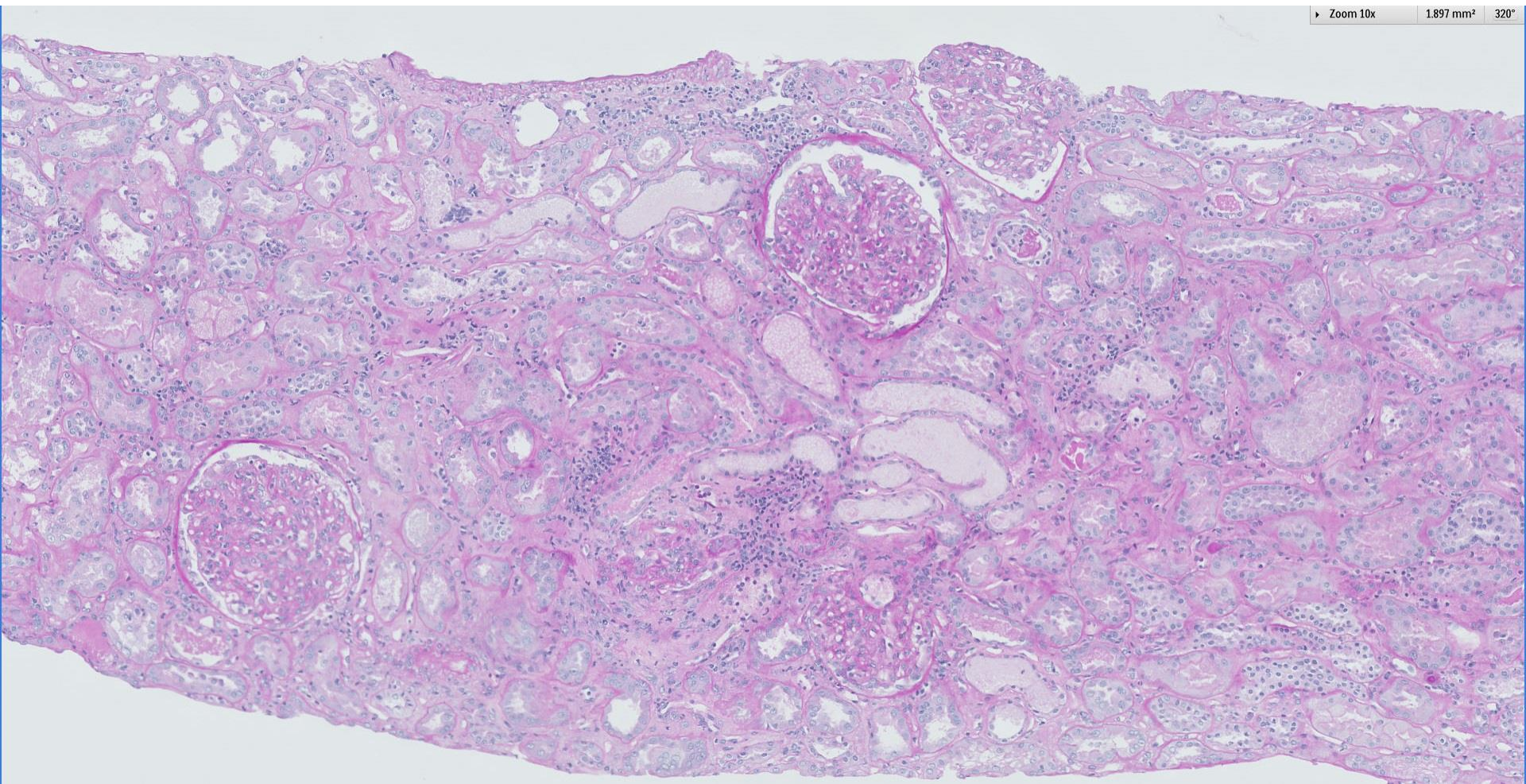
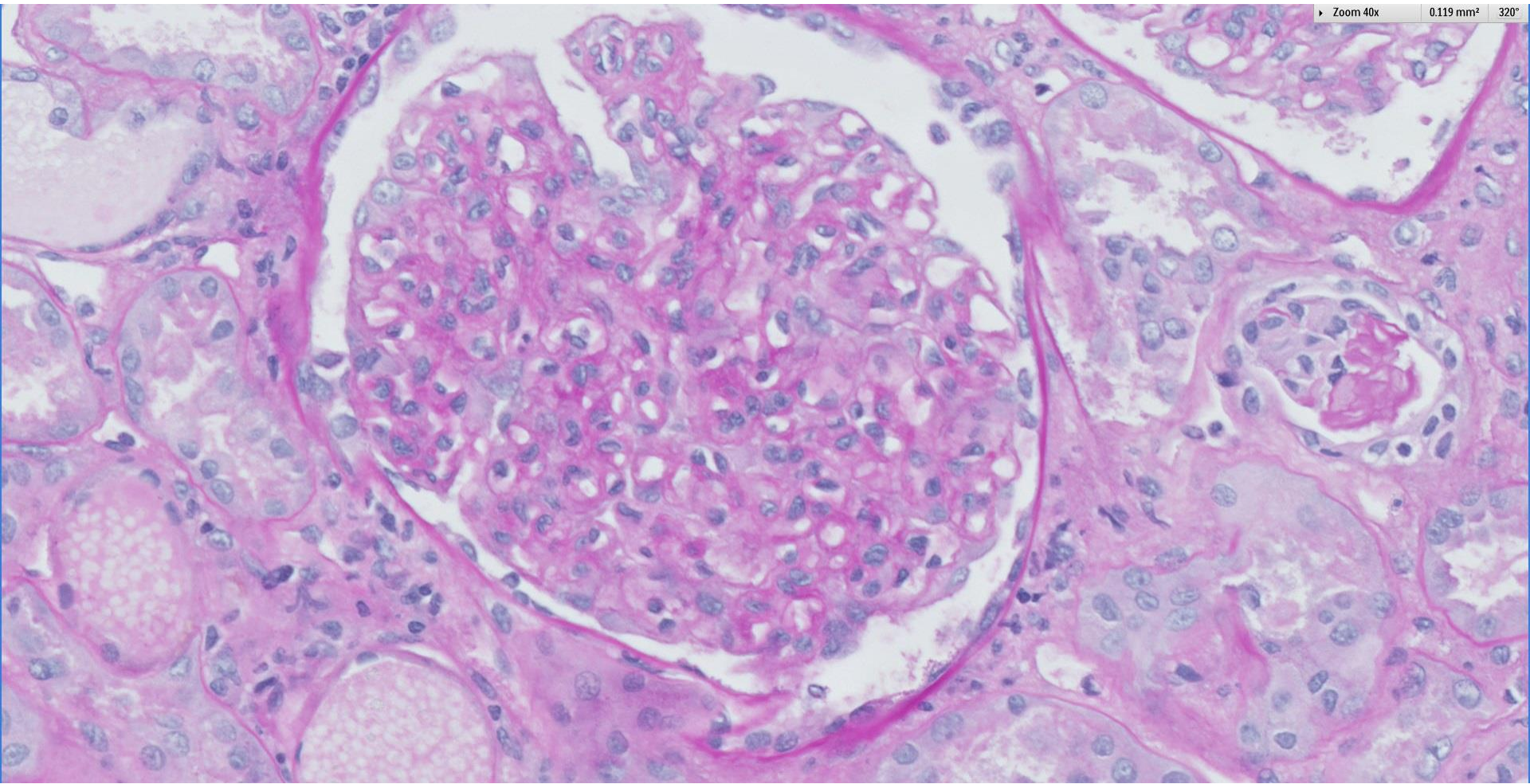


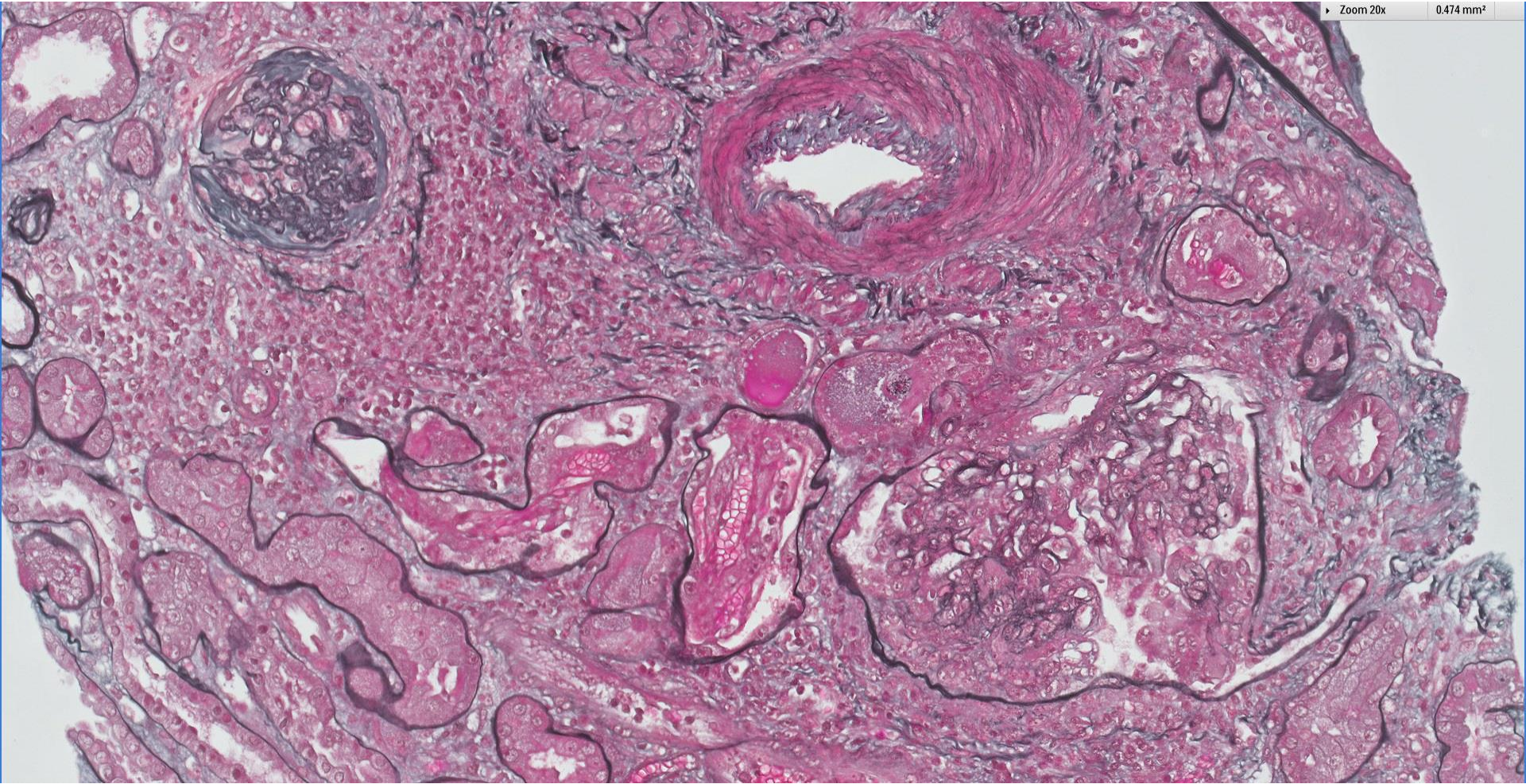
## Case 39

58 year old diabetic male with haematuria, proteinuria and acute kidney injury. ANA is positive while anti-dsDNA and anti-GBM antibodies are negative. ANCA serology is also negative.

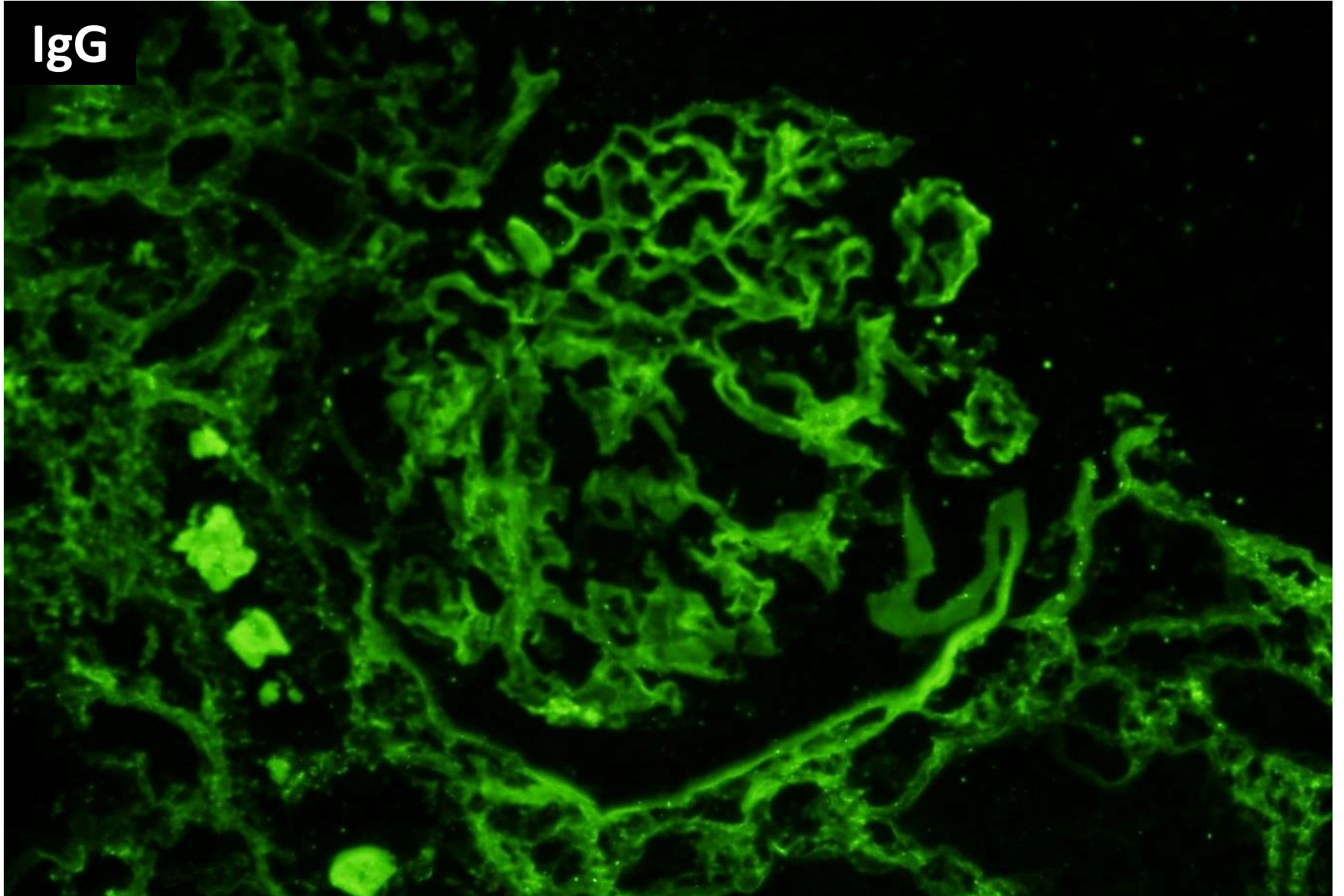




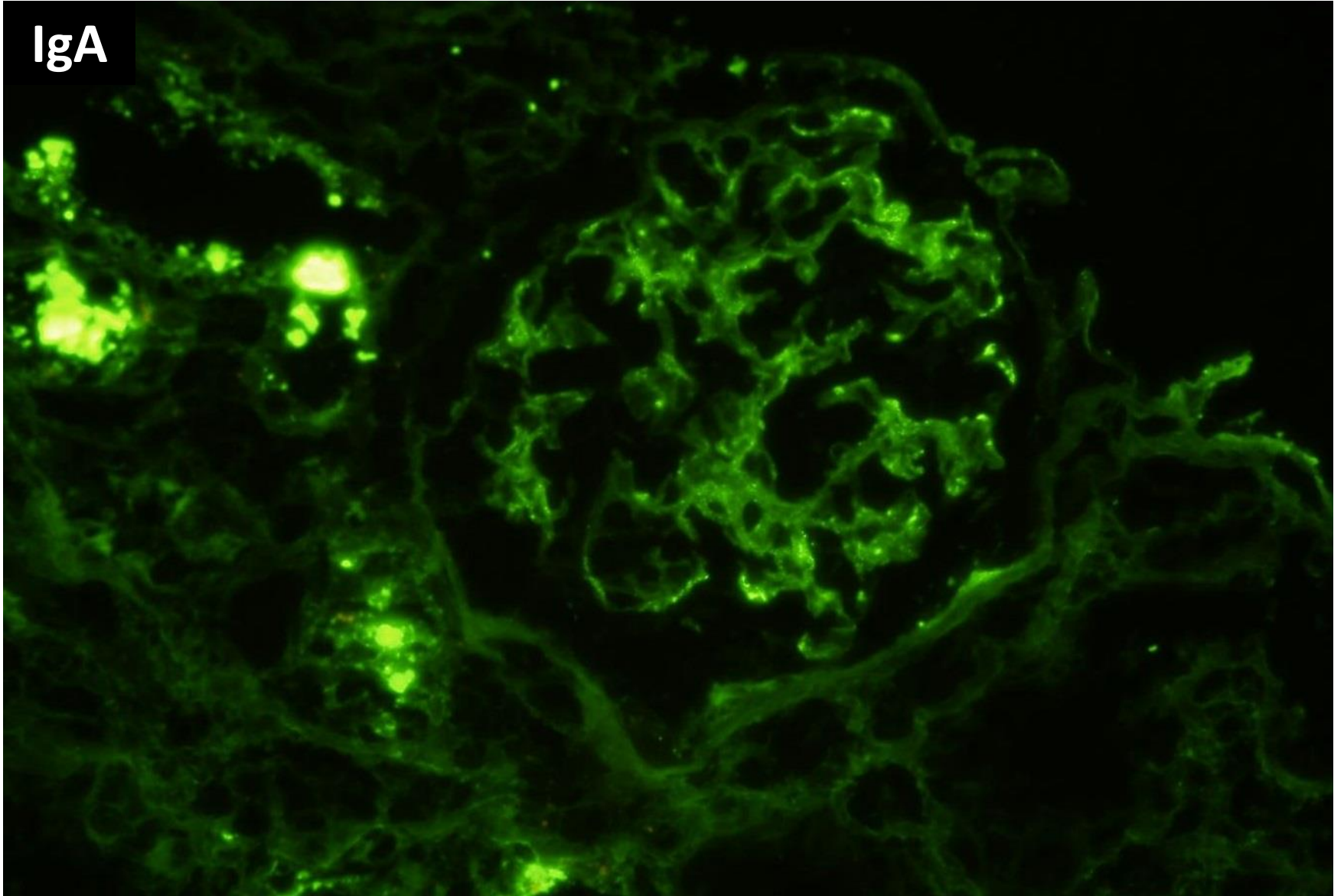




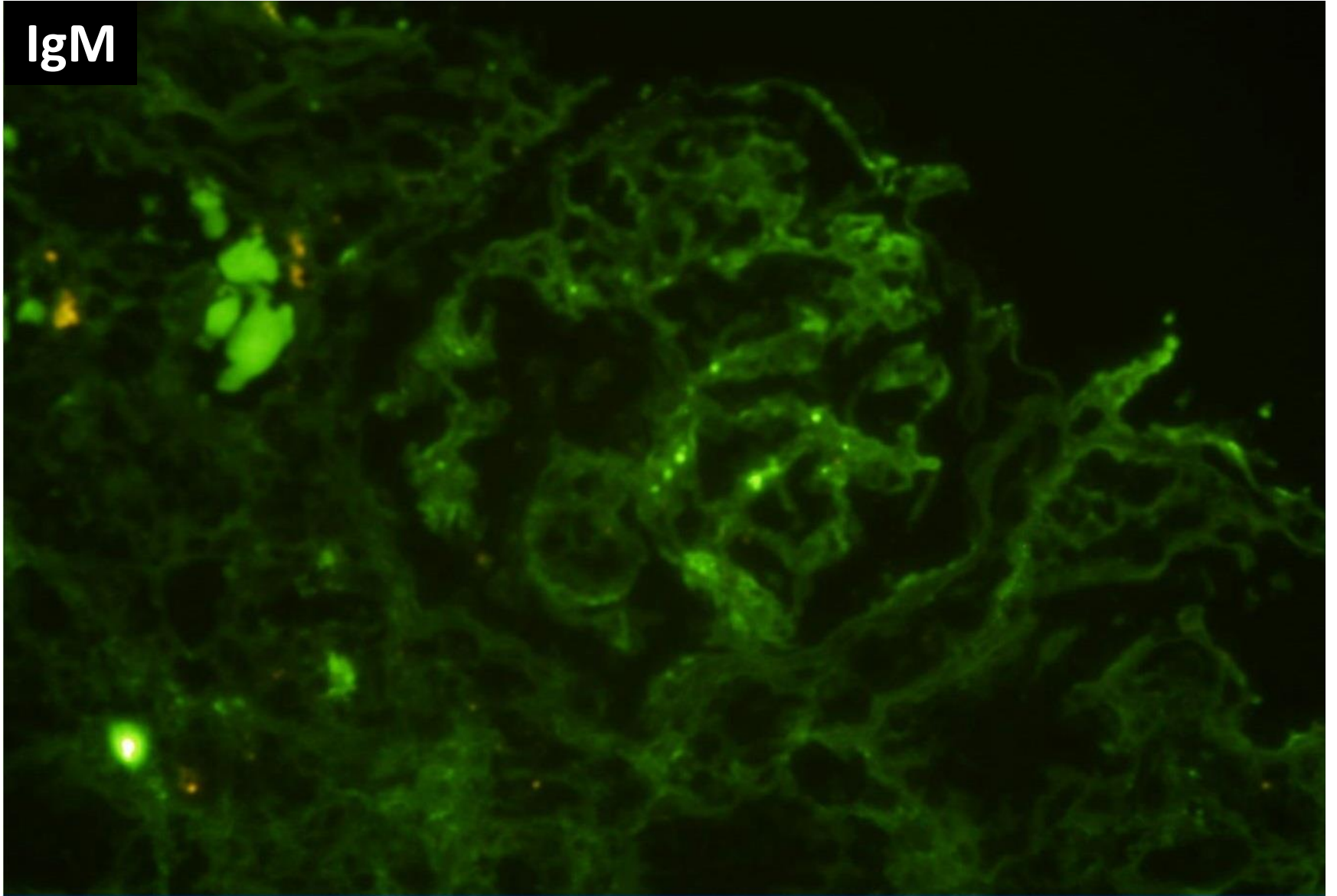
IgG



IgA

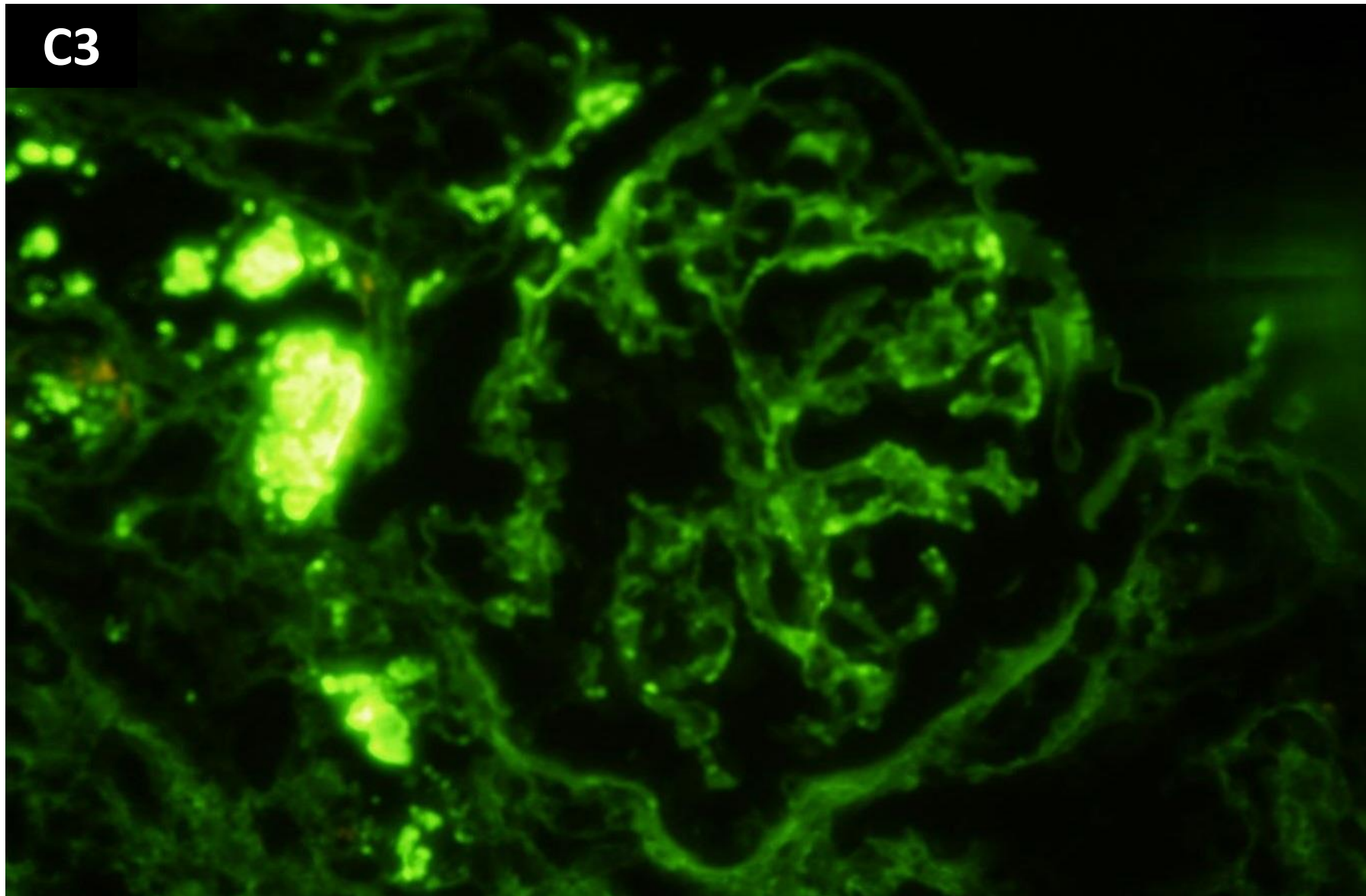


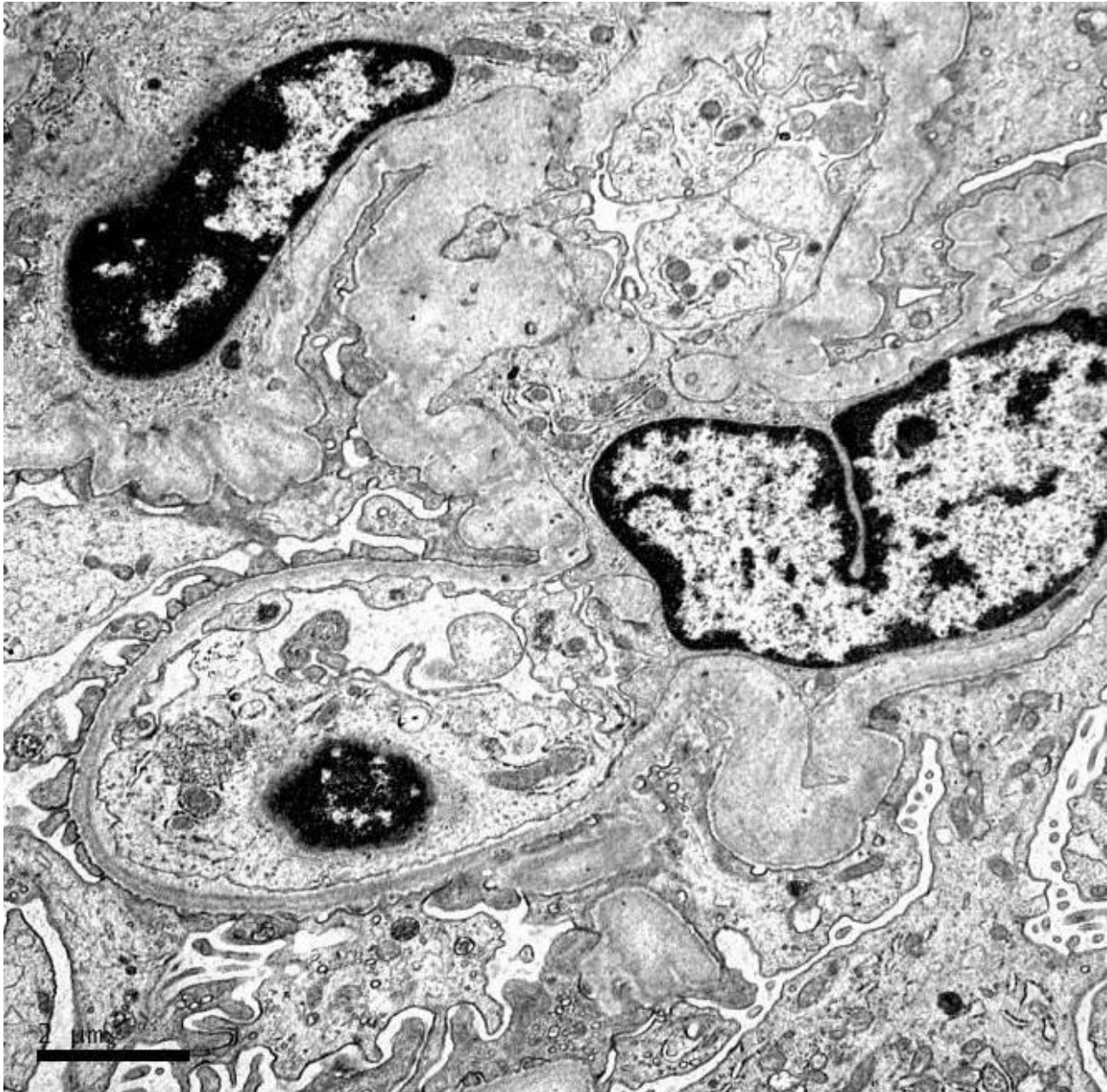
IgM

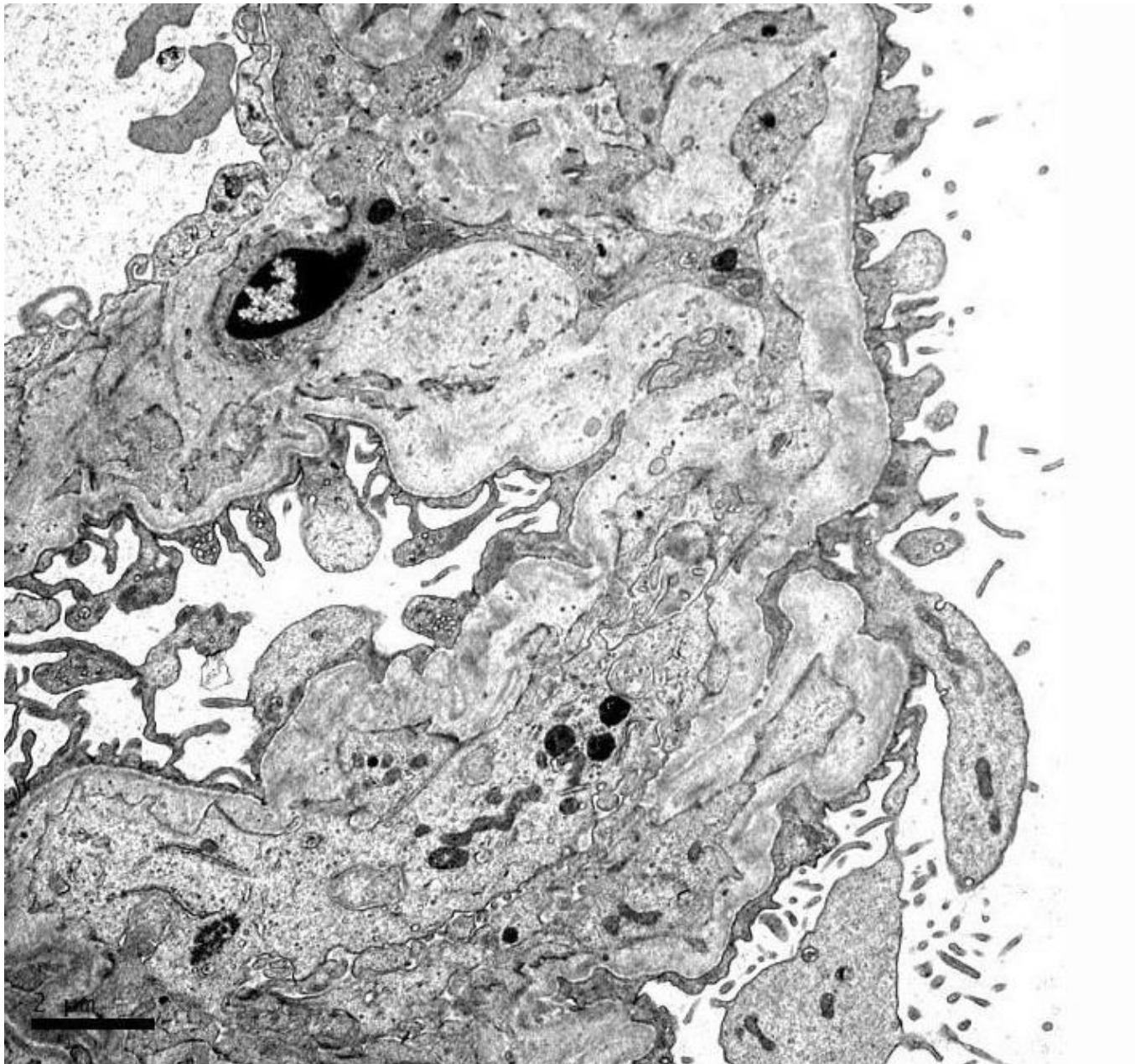


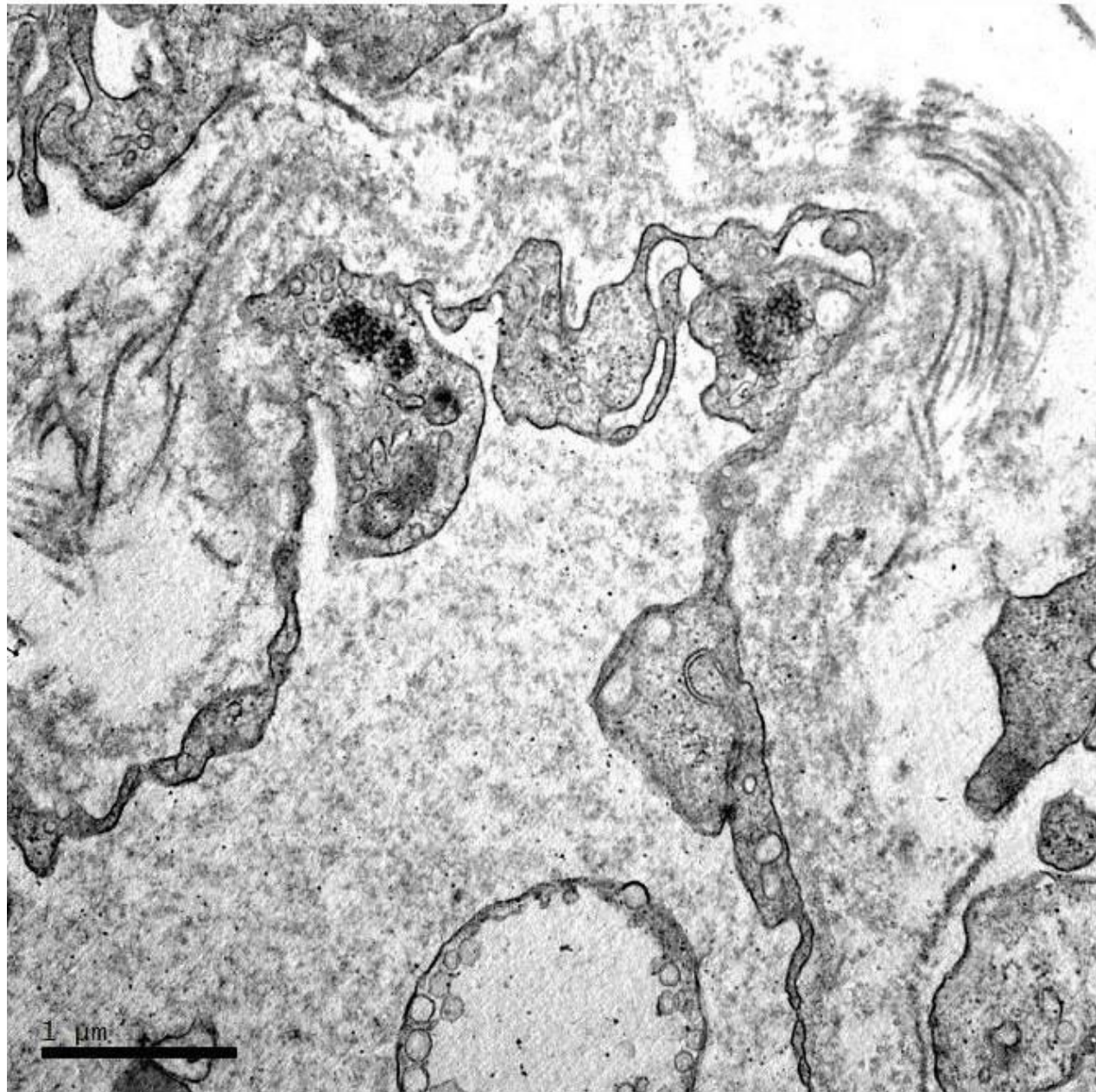


C3













# RENAL BIOPSY CLINICOPATHOLOGICAL WORKSHOP 2018



**PATHOLOGY**



Division of Pathology  
Singapore General Hospital



Department of Renal Medicine  
Singapore General Hospital



**MEDICINE**