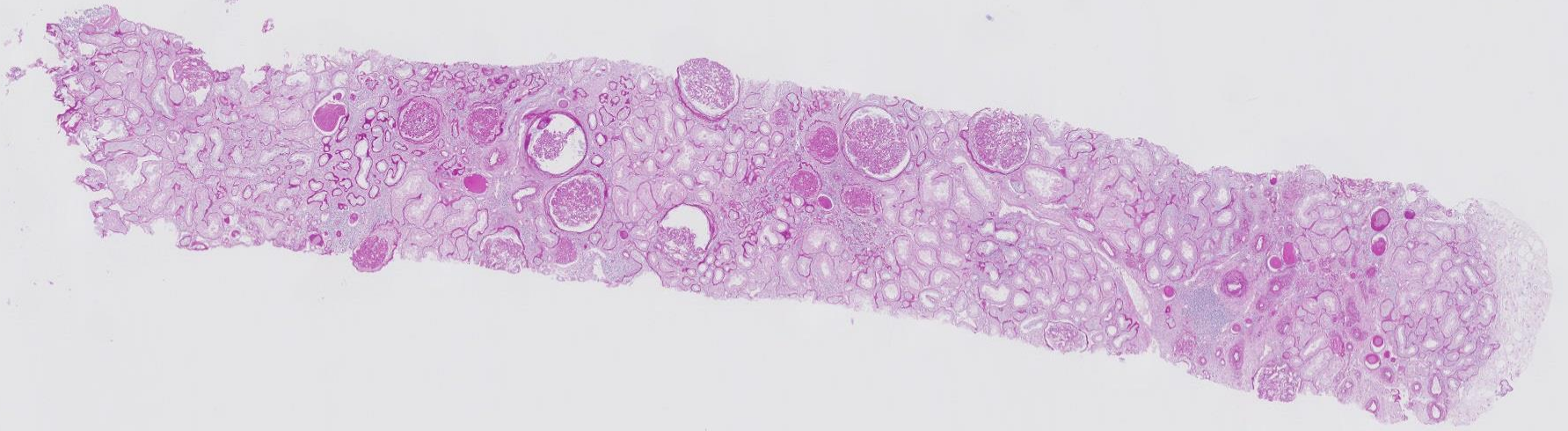
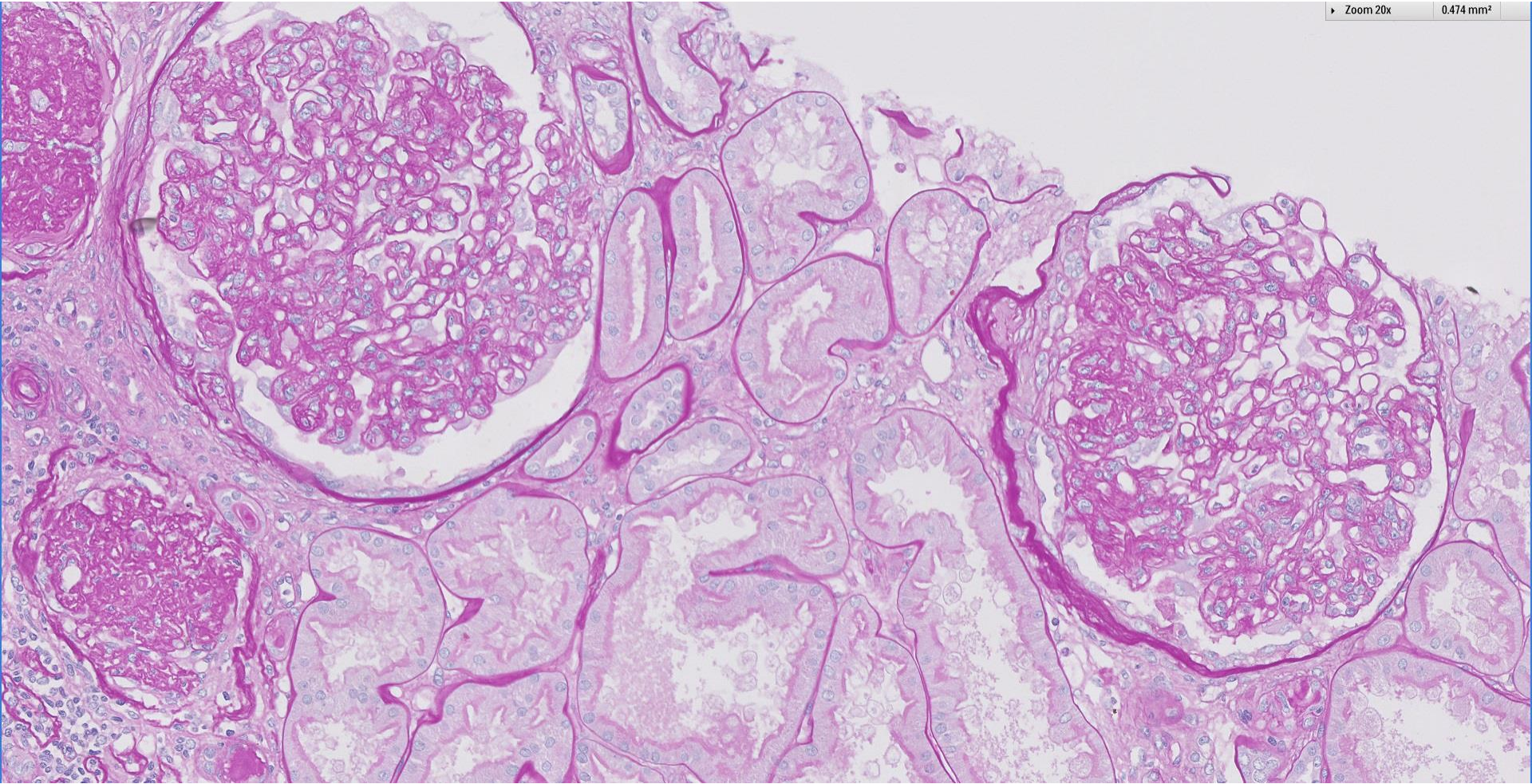
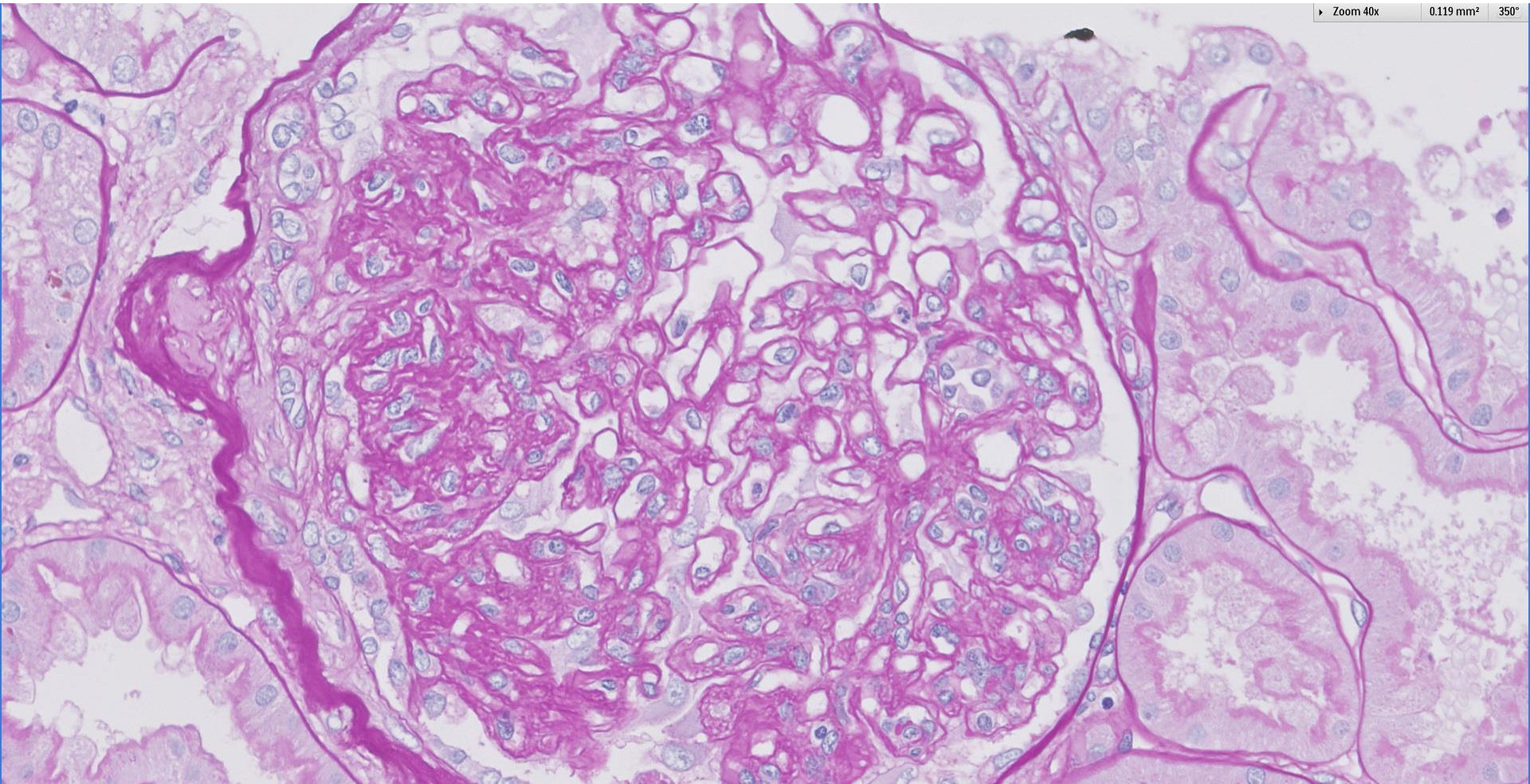


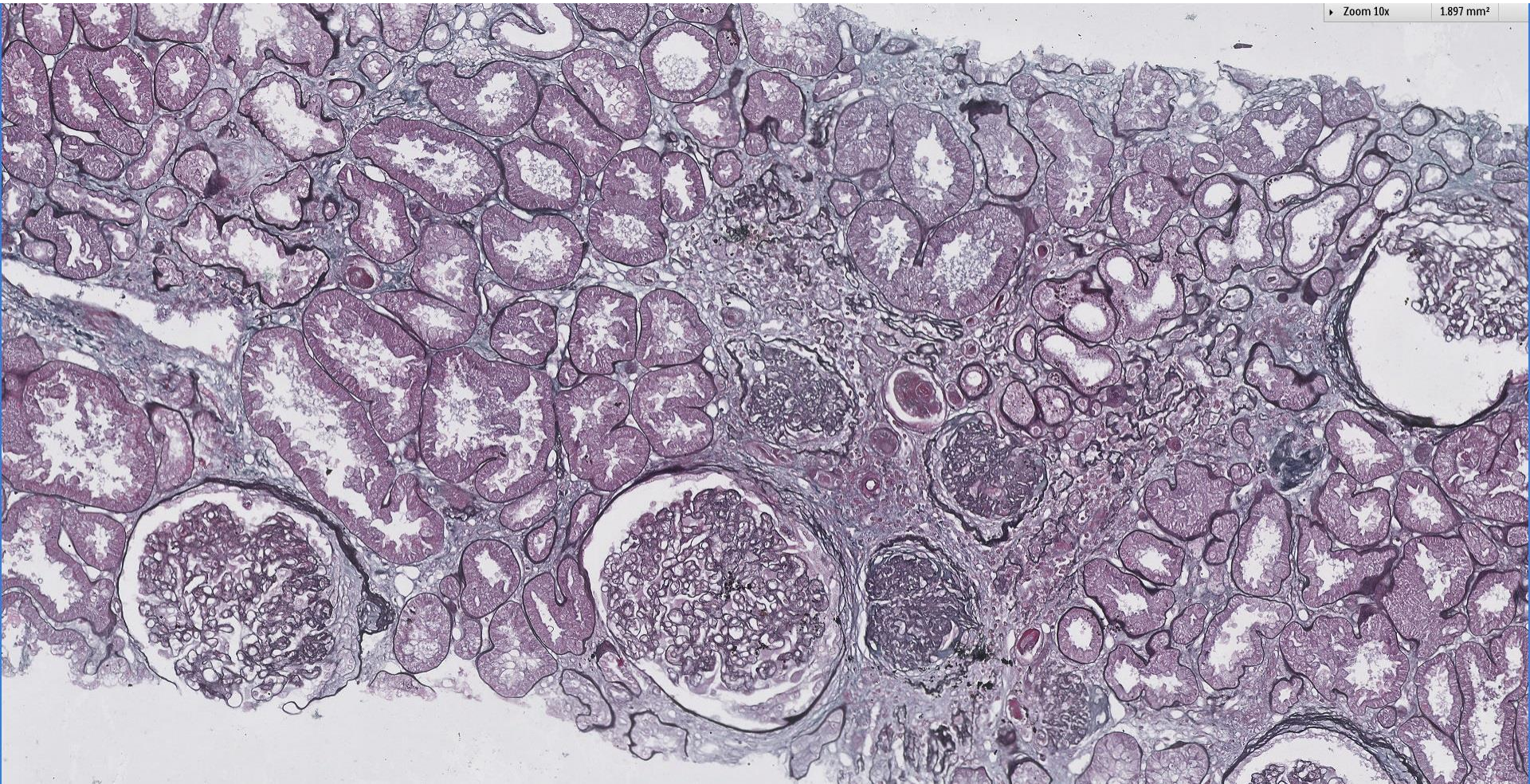
Case 37

52 year old female with fever, joint pain, haematuria and proteinuria has AKI. Serum creatinine 144 $\mu\text{mol/L}$, complements not low, anti-dsDNA present.

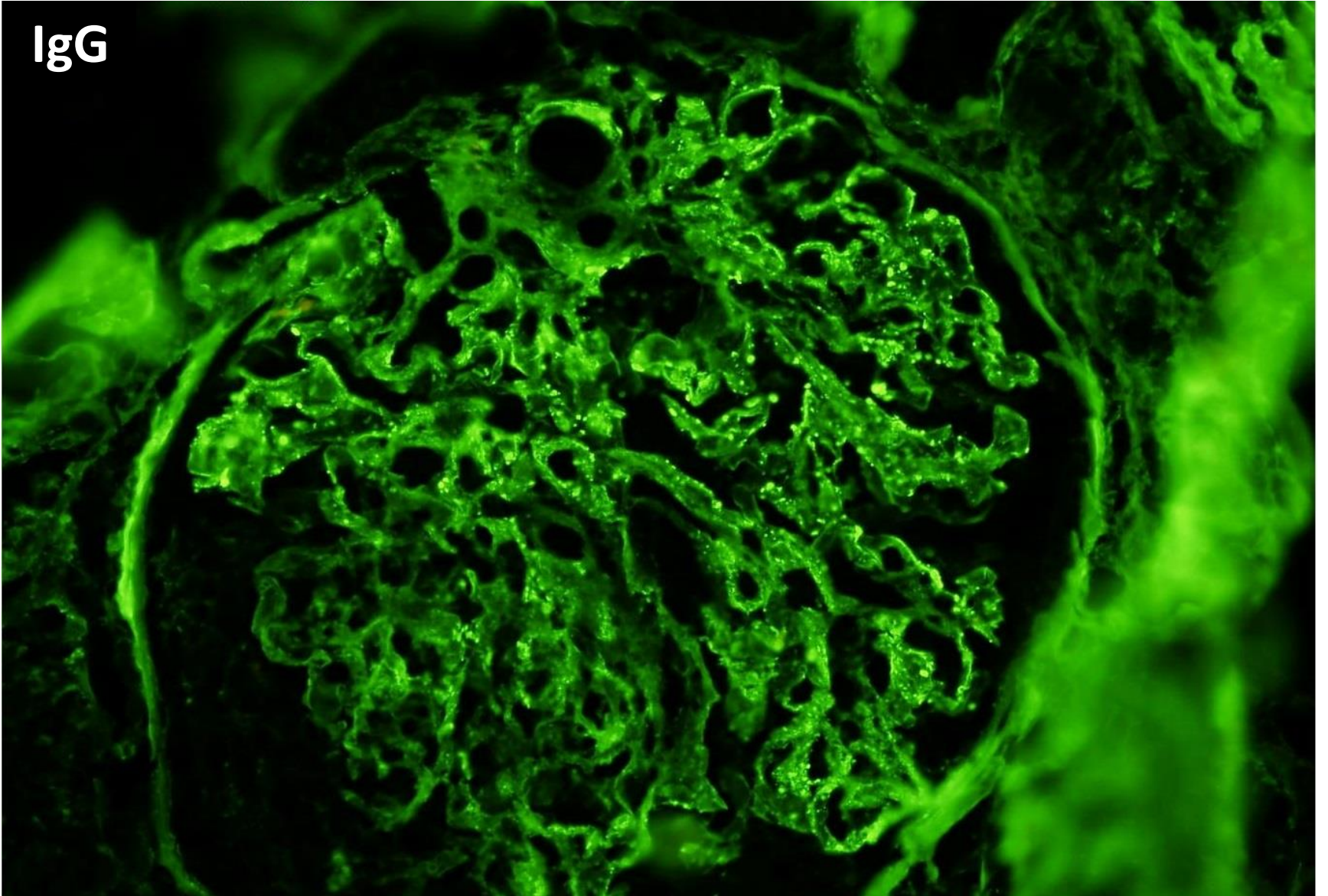




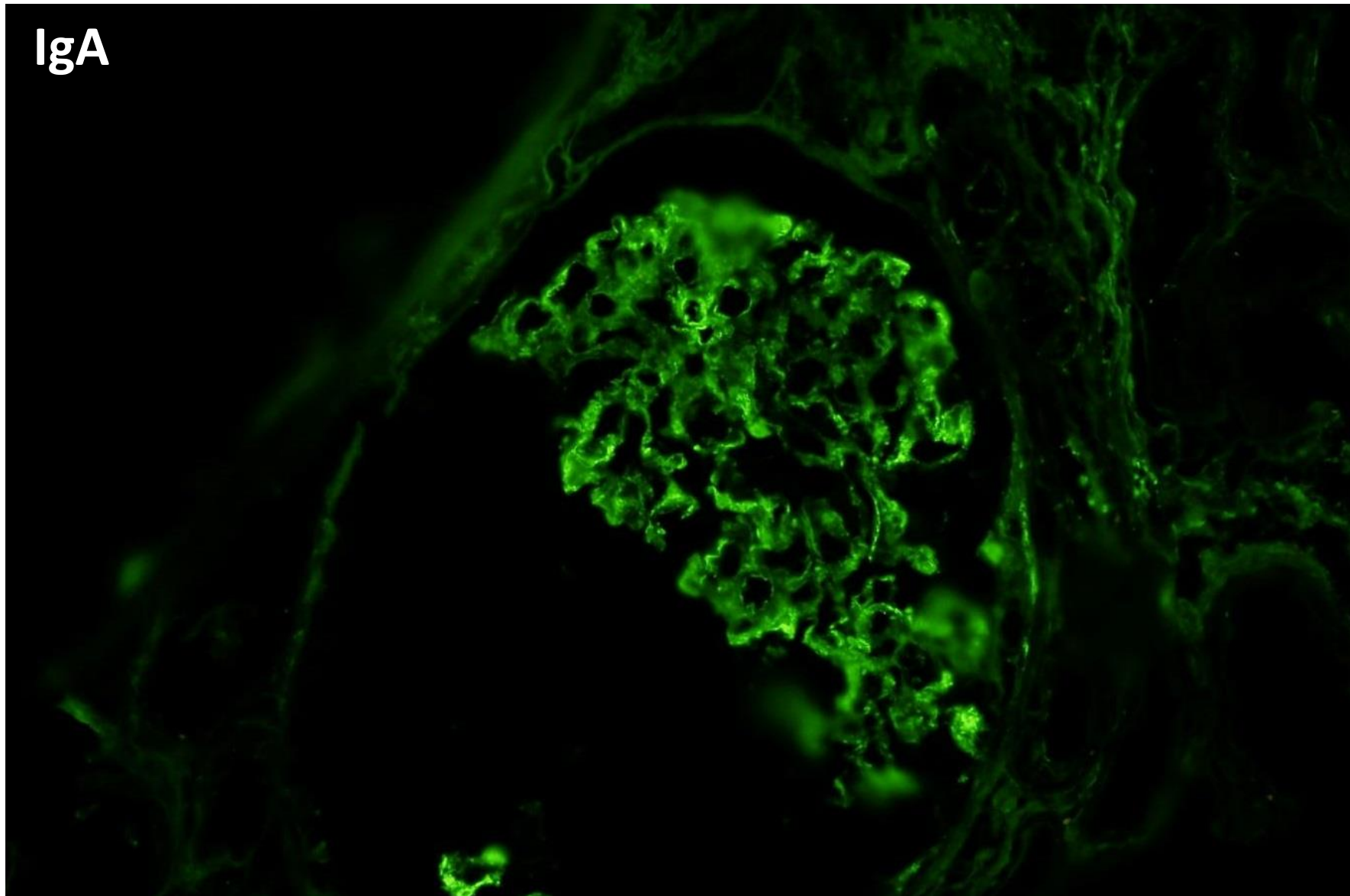




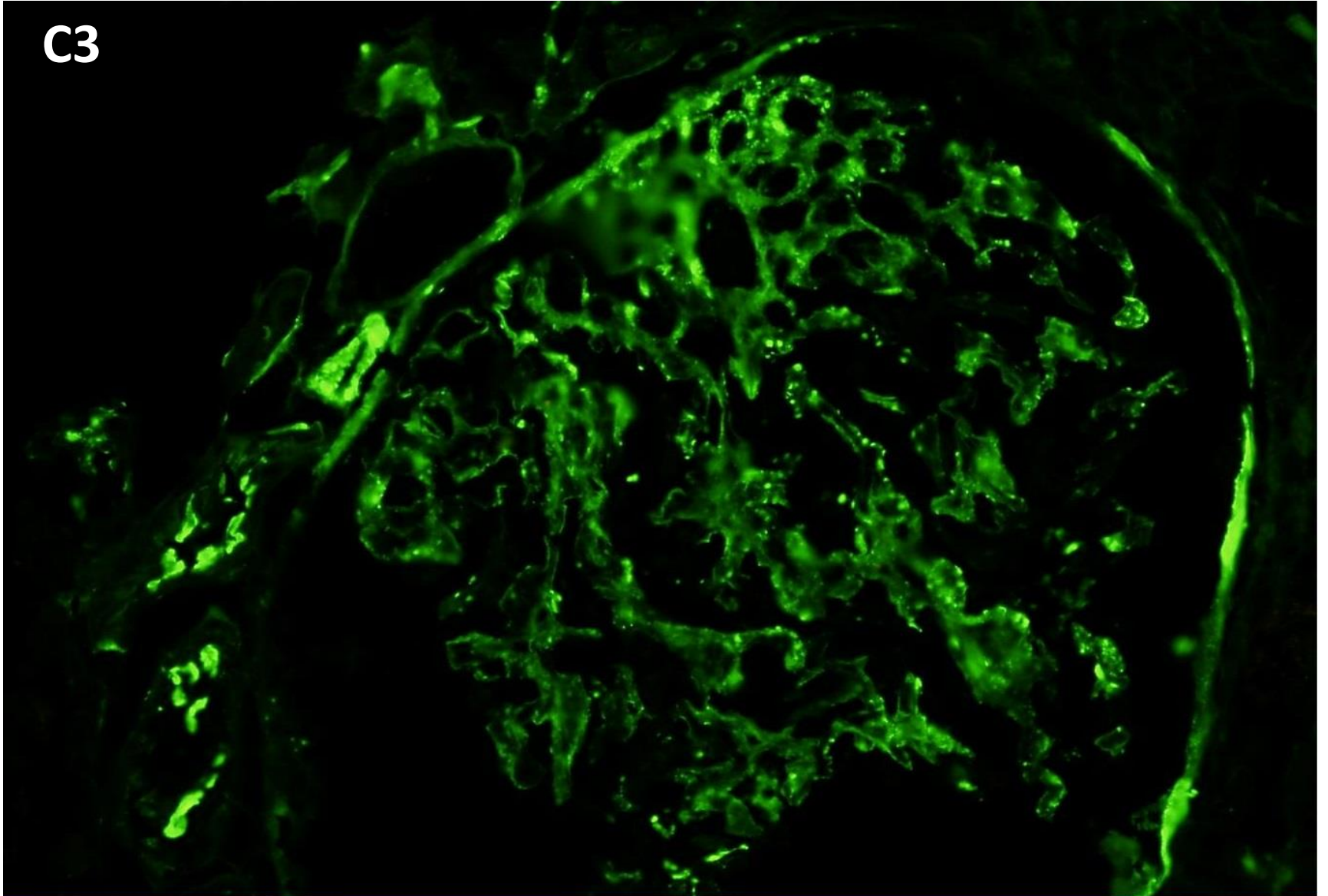
IgG



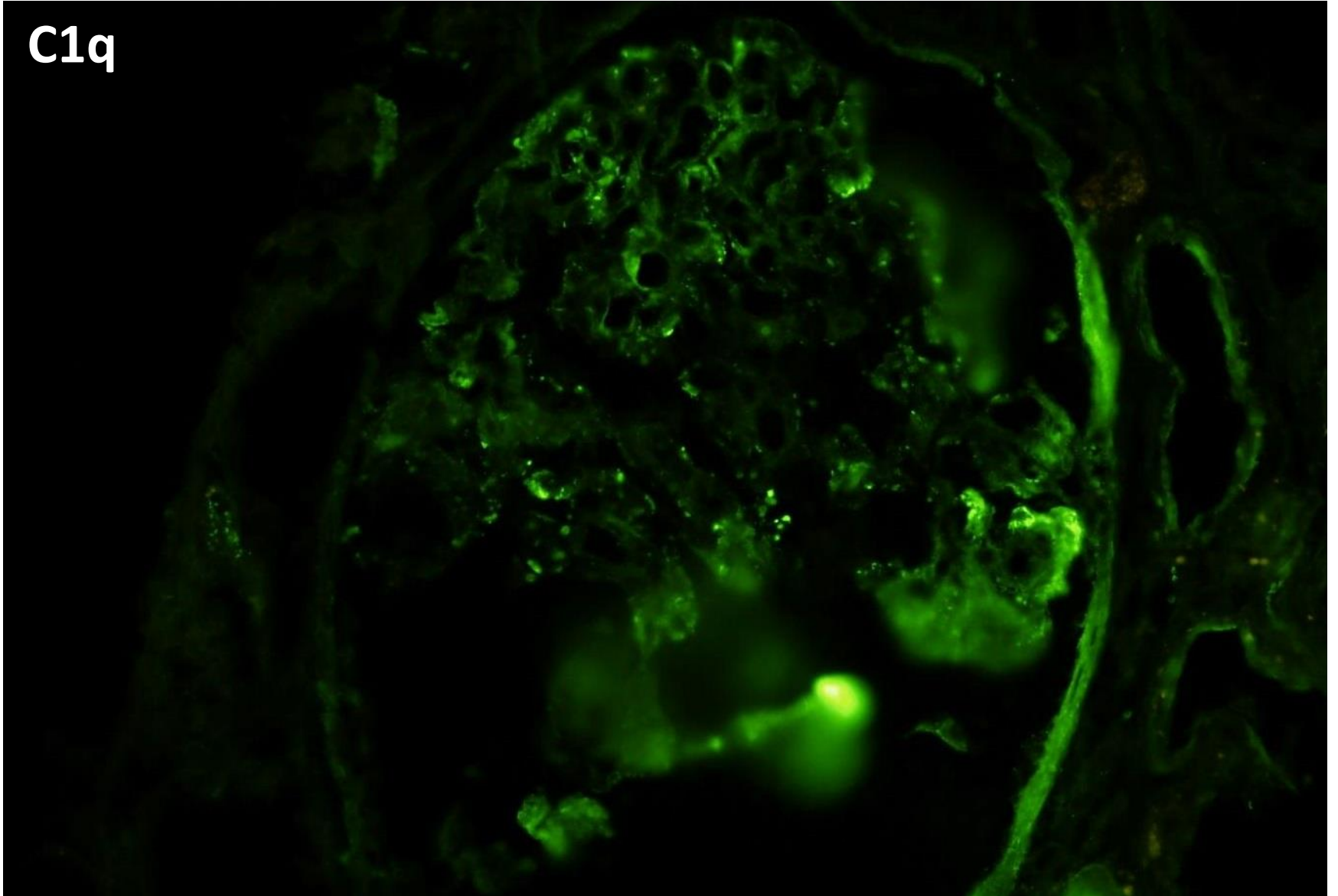
IgA



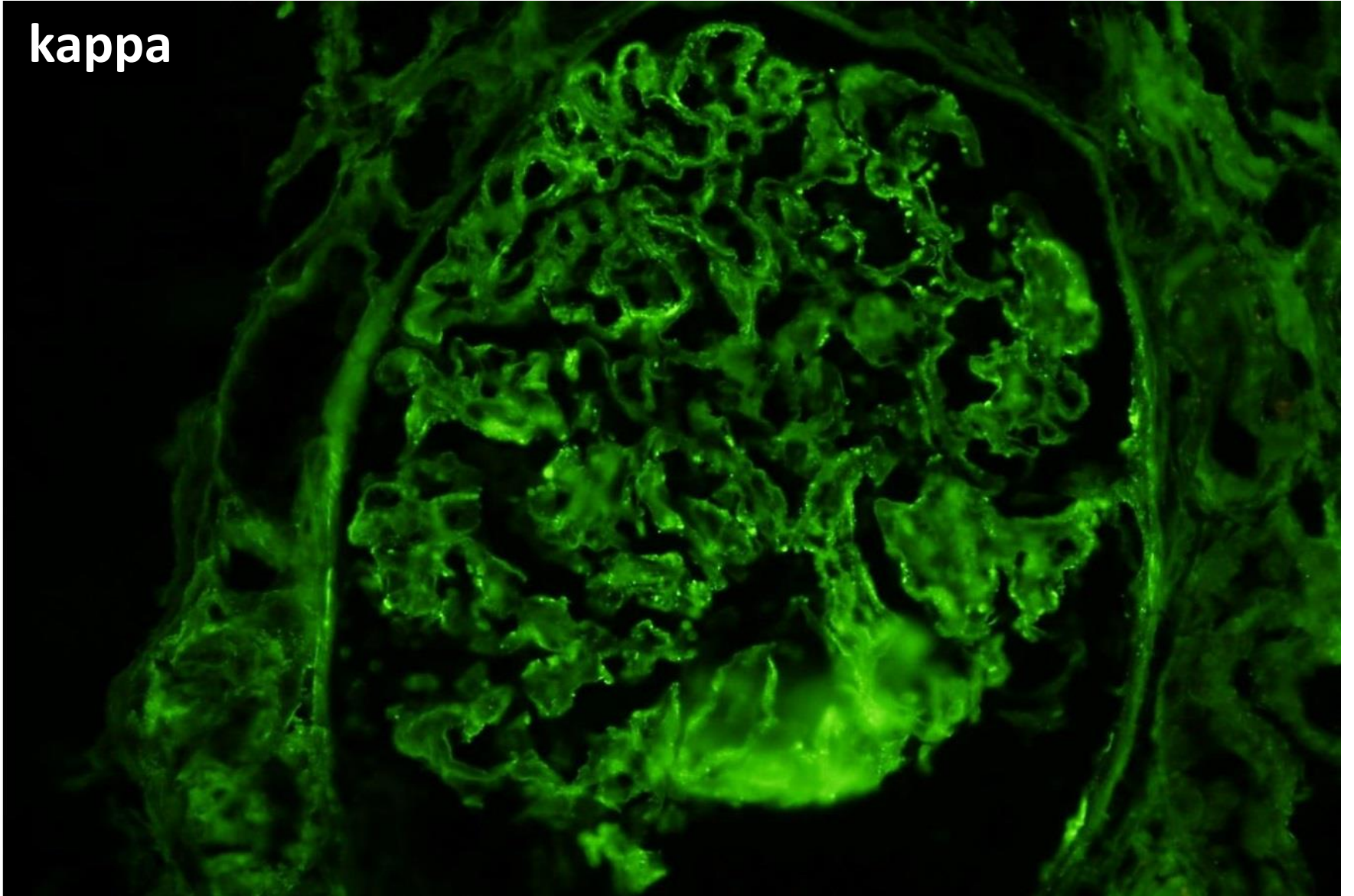
C3



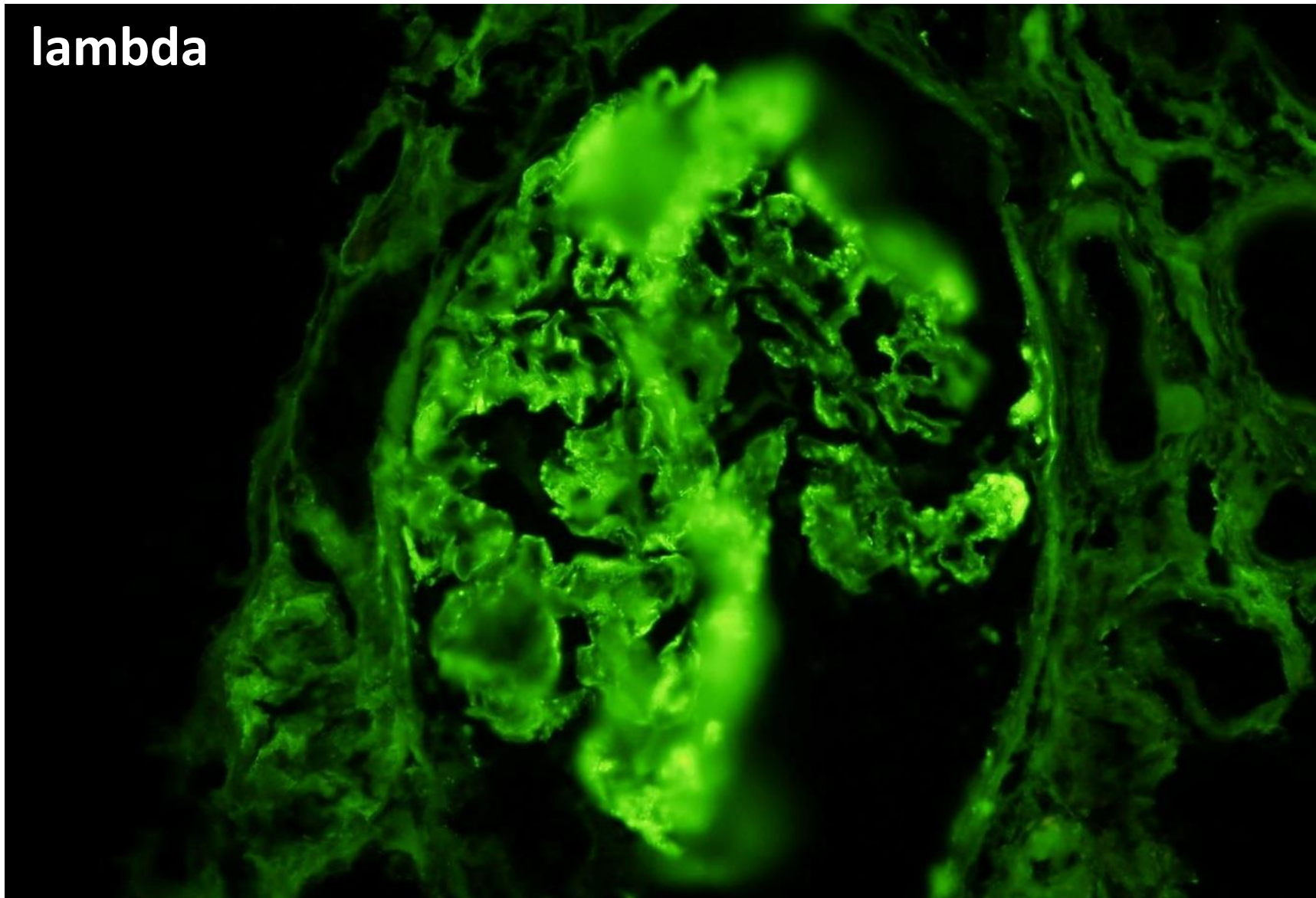
C1q

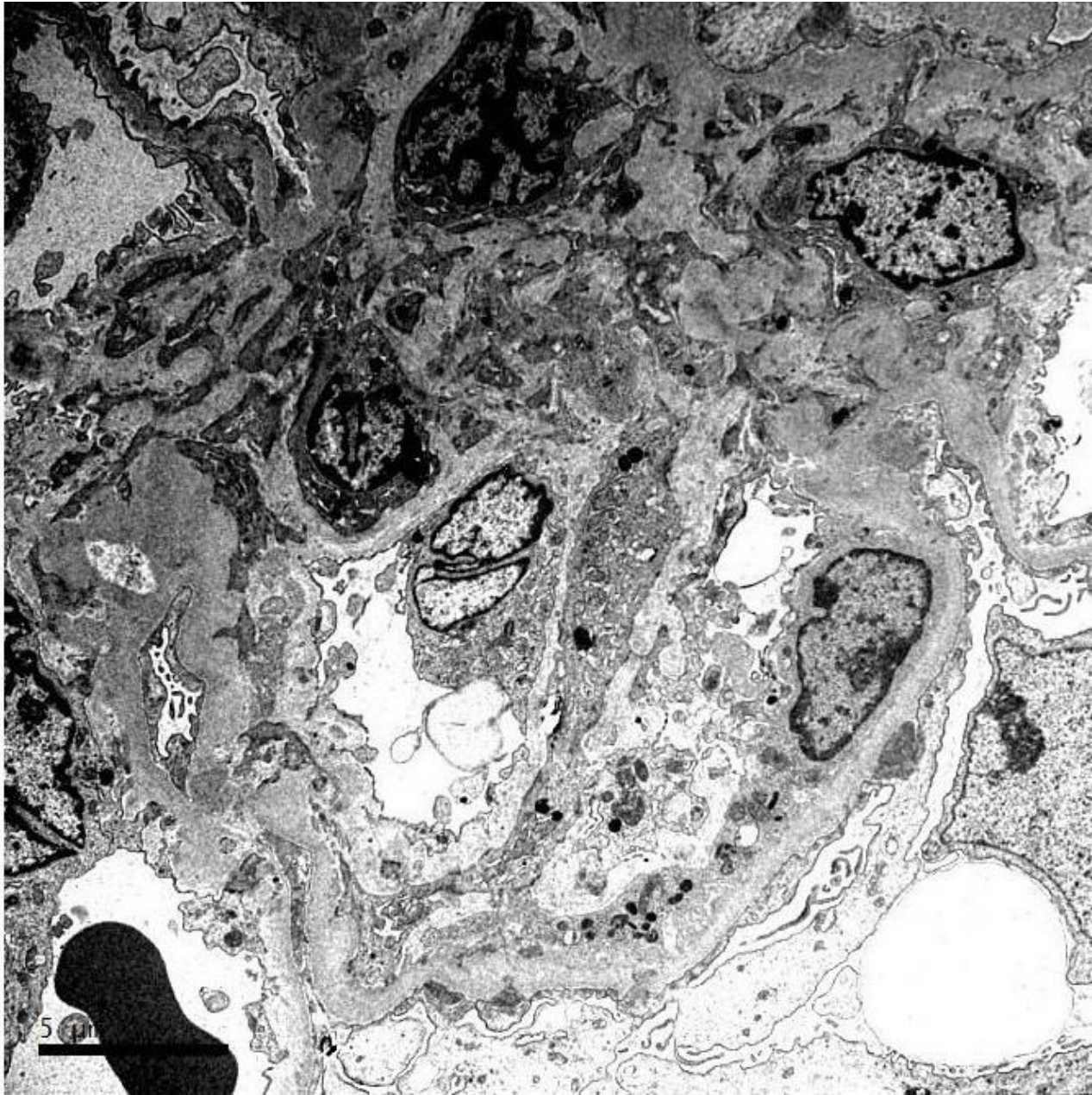


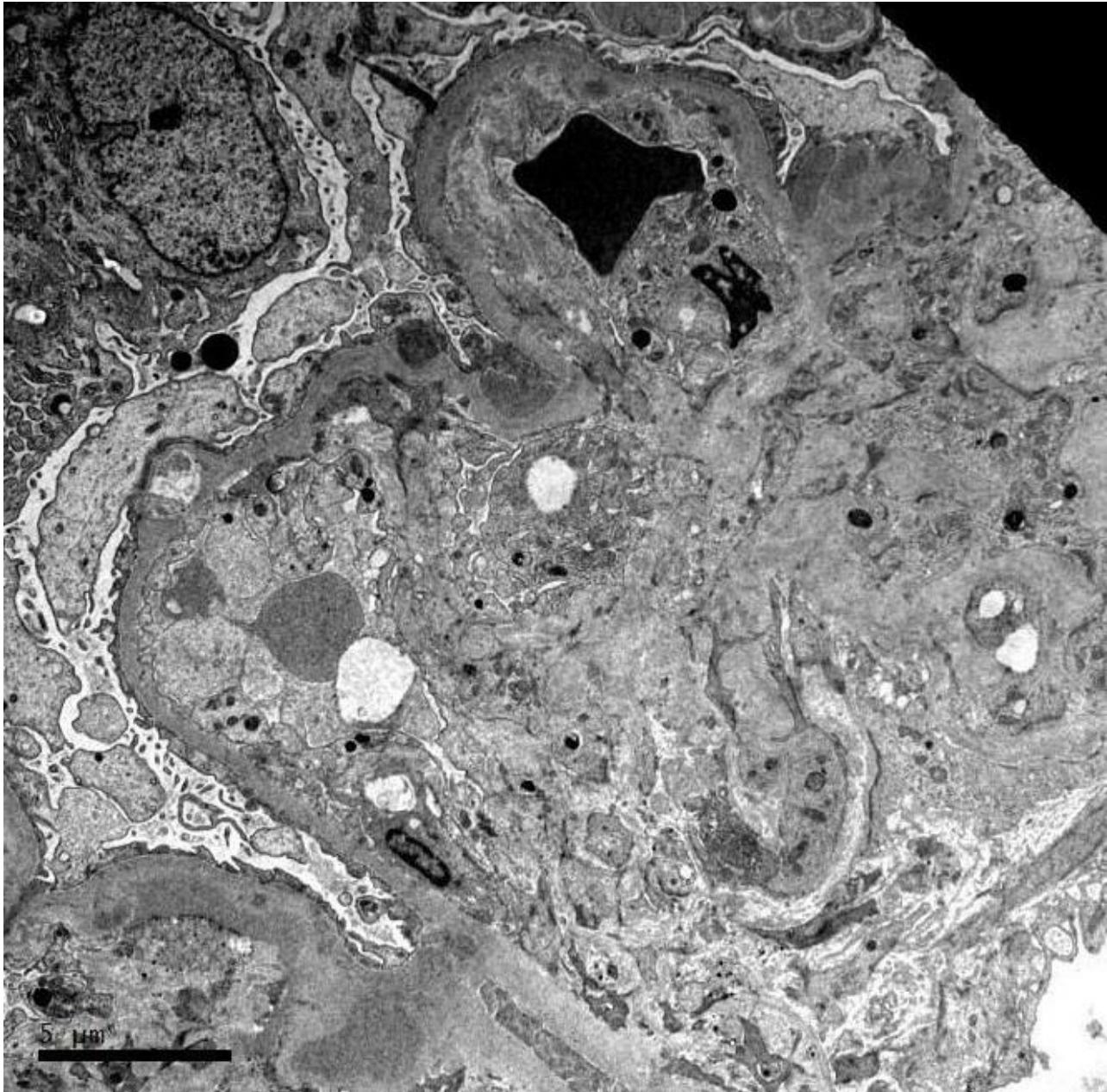
kappa

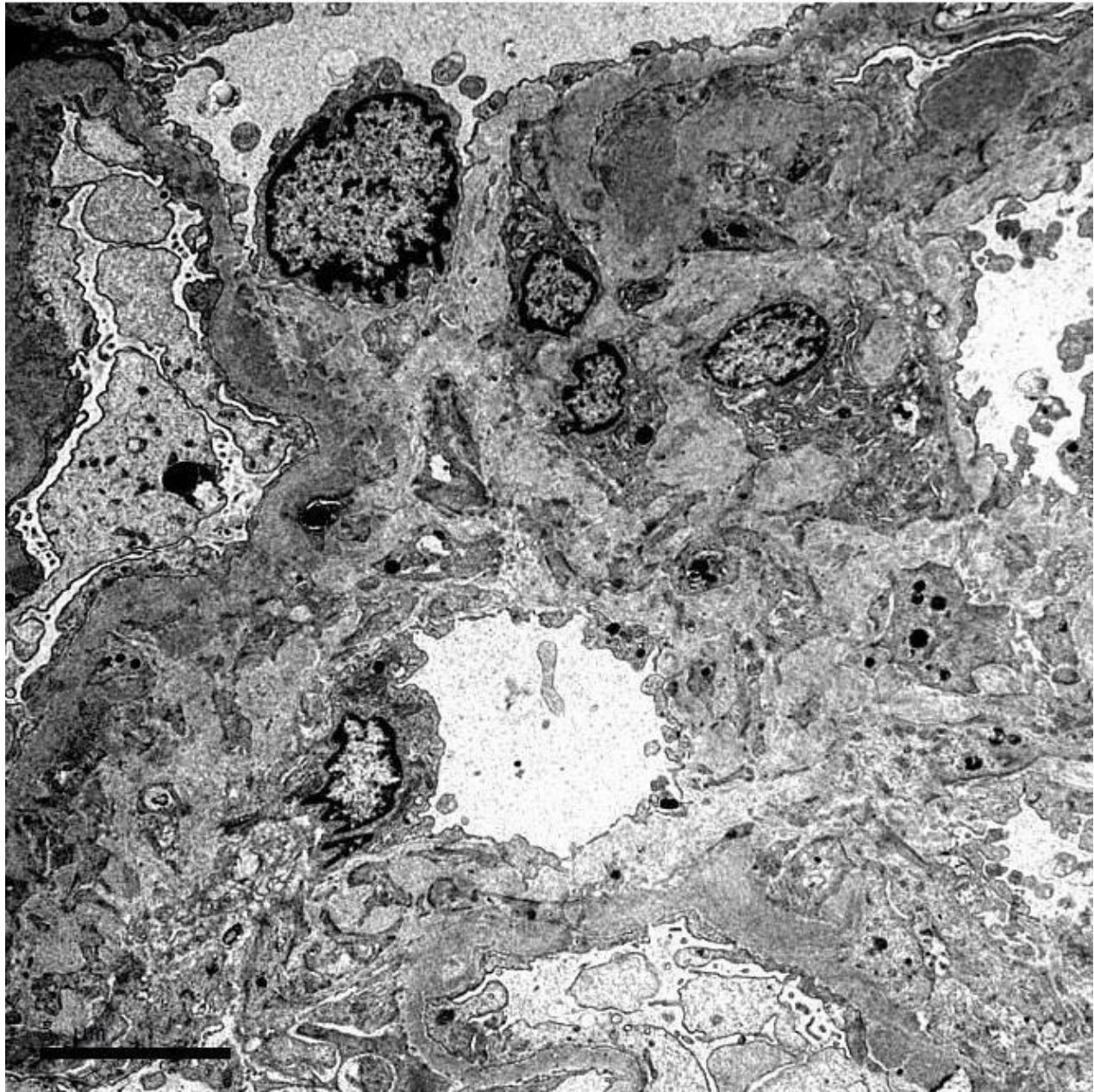


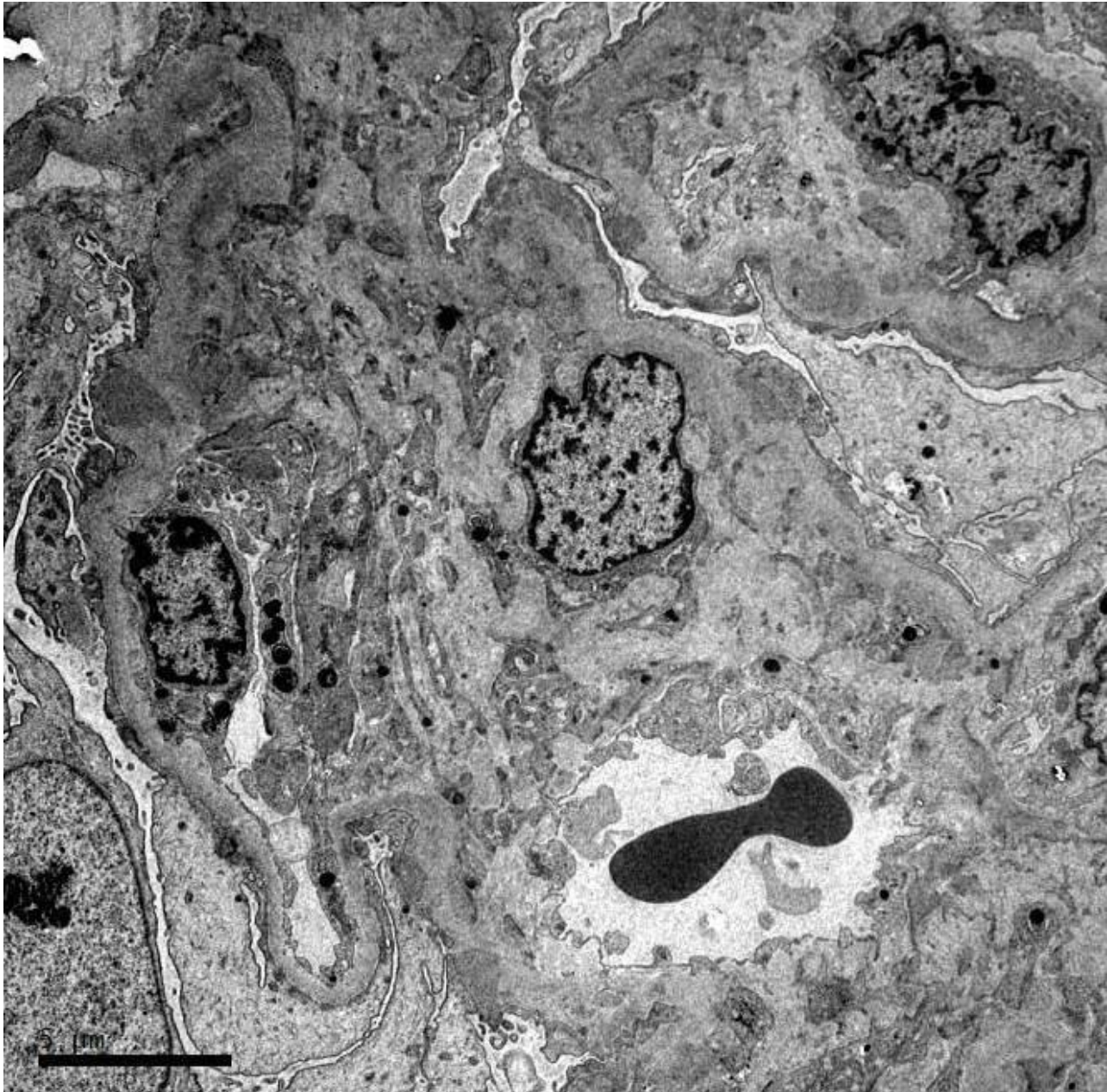
lambda

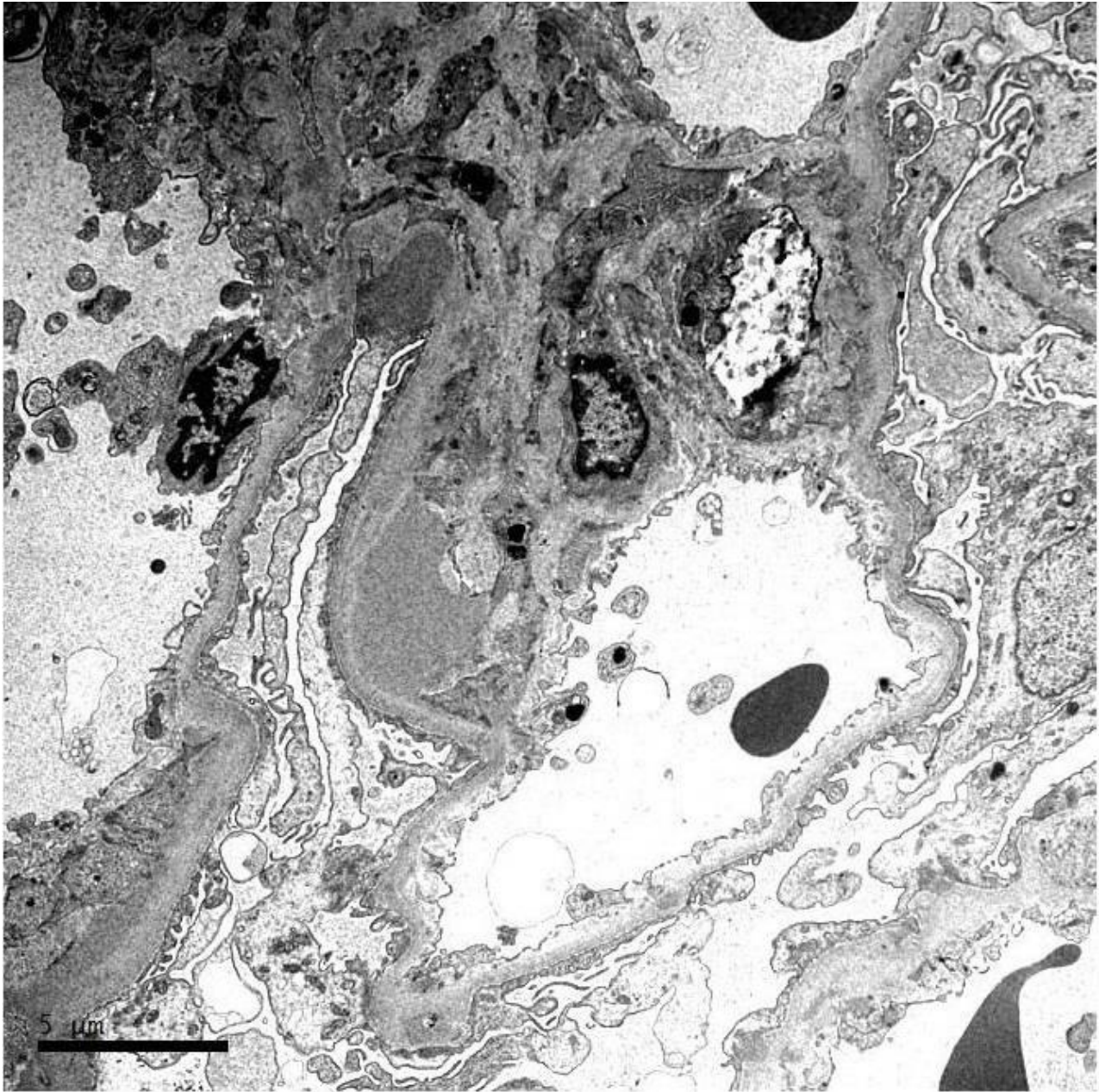














RENAL BIOPSY CLINICOPATHOLOGICAL WORKSHOP 2018



PATHOLOGY



Division of Pathology
Singapore General Hospital



Department of Renal Medicine
Singapore General Hospital



MEDICINE