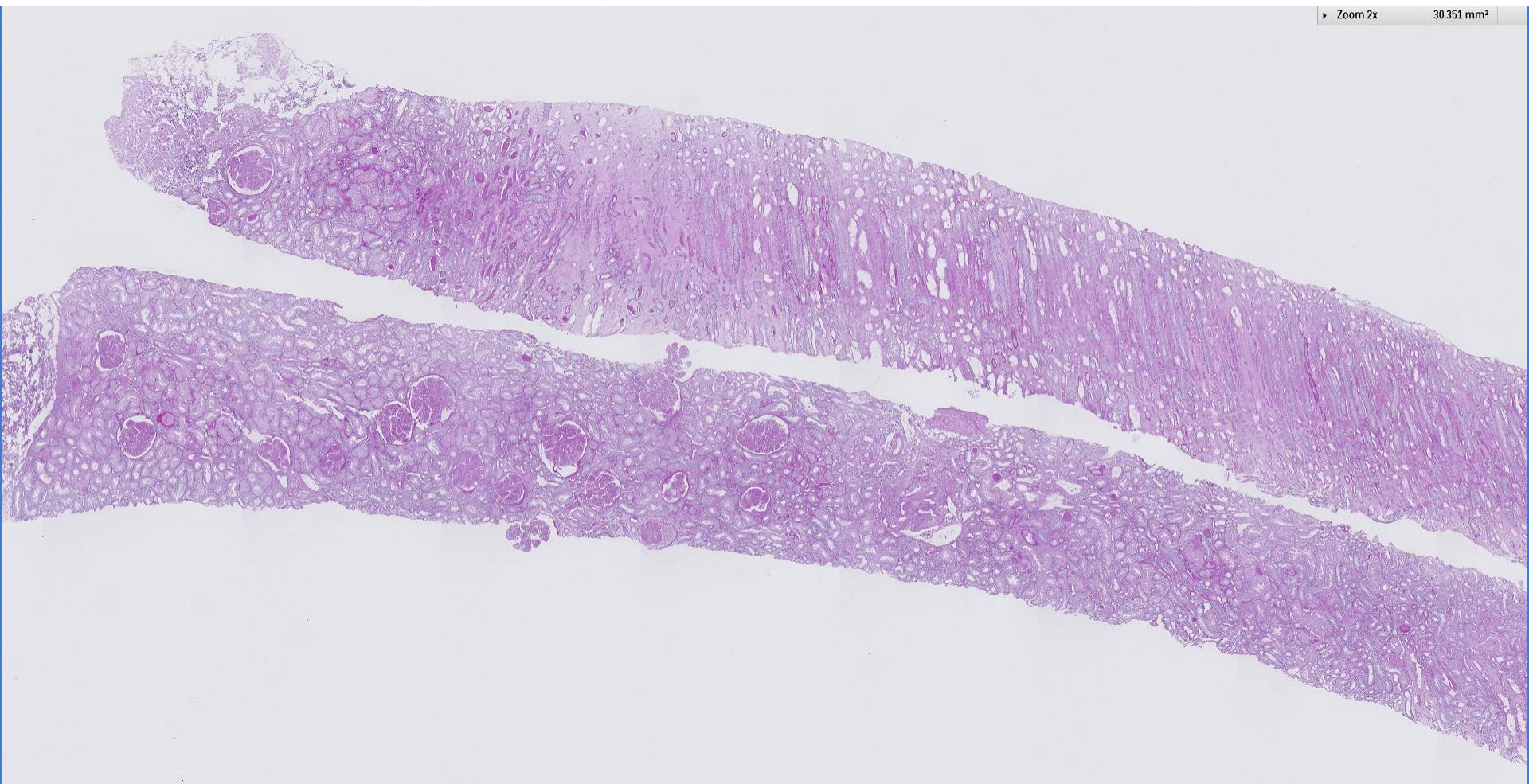


## *Case 36*

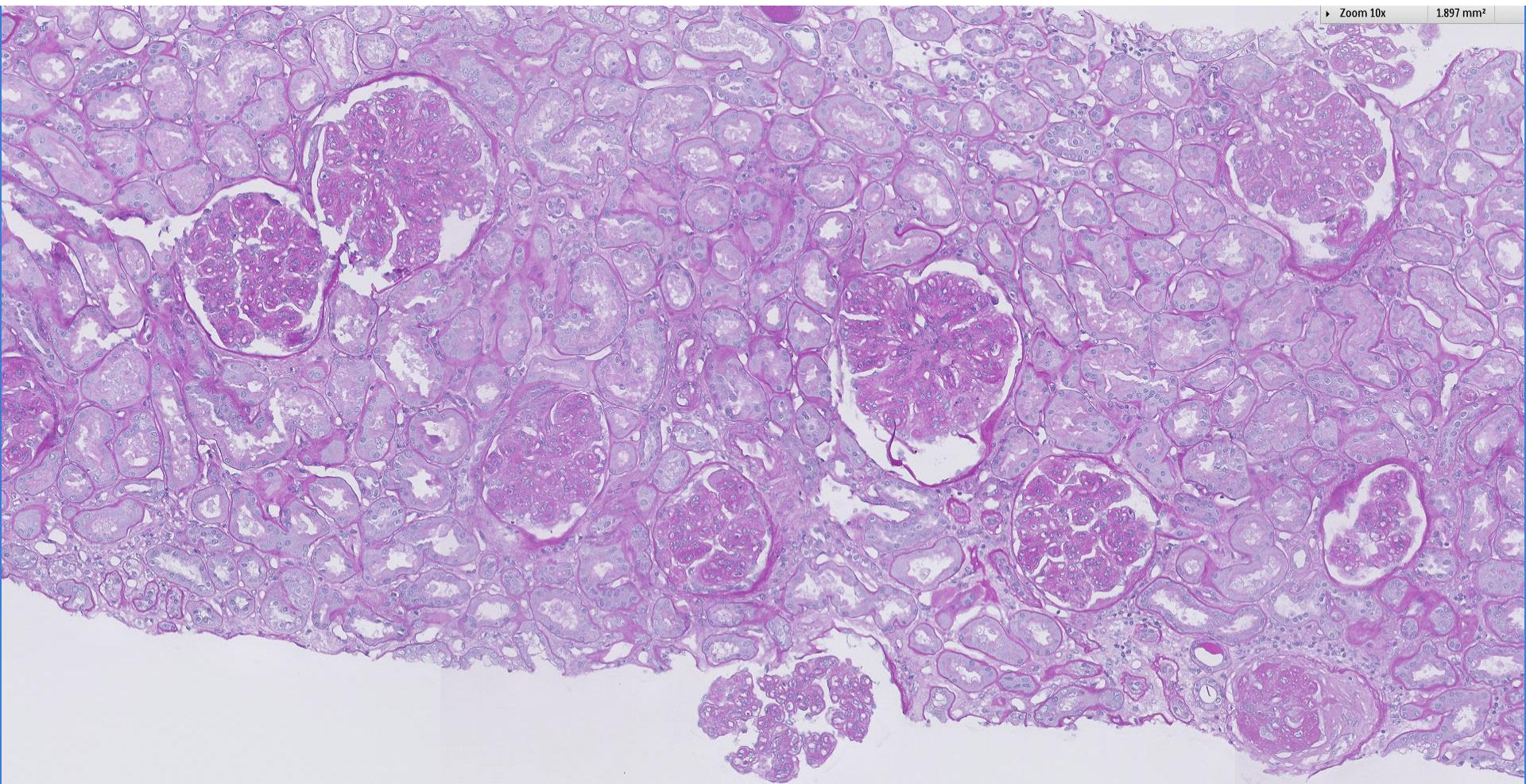
67 year old female with mixed connective tissue disease now has haematuria and proteinuria. Serum complements normal. ANA positive, anti-dsDNA negative.

► Zoom 2x

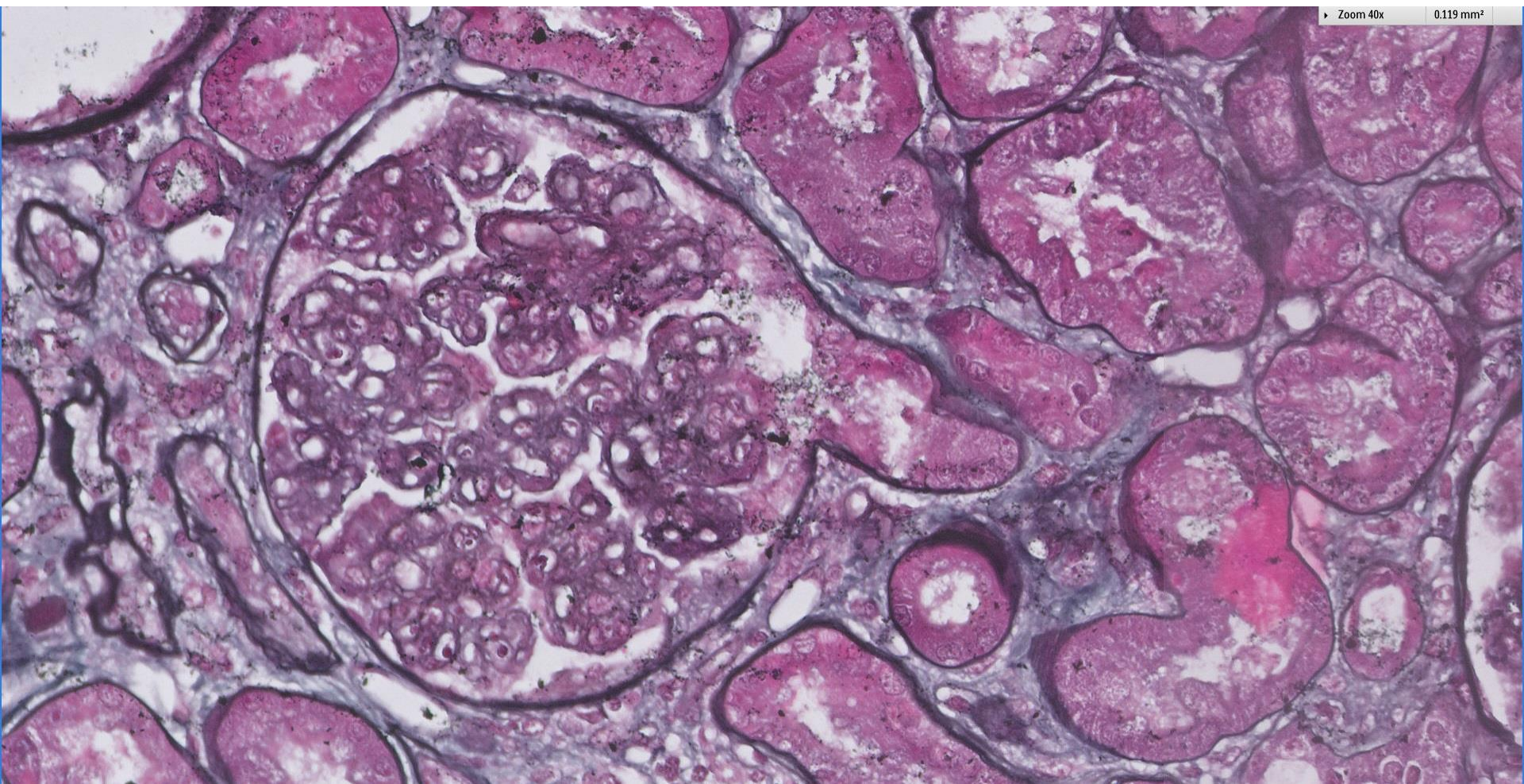
30.351 mm<sup>2</sup>



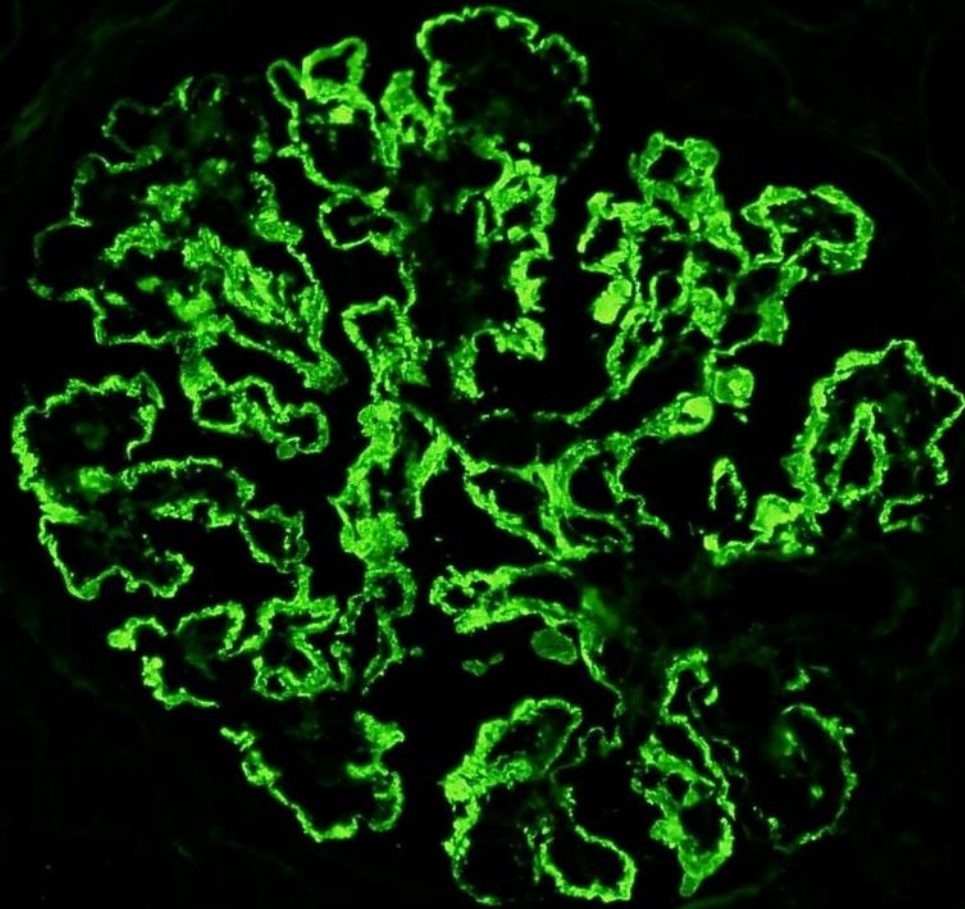






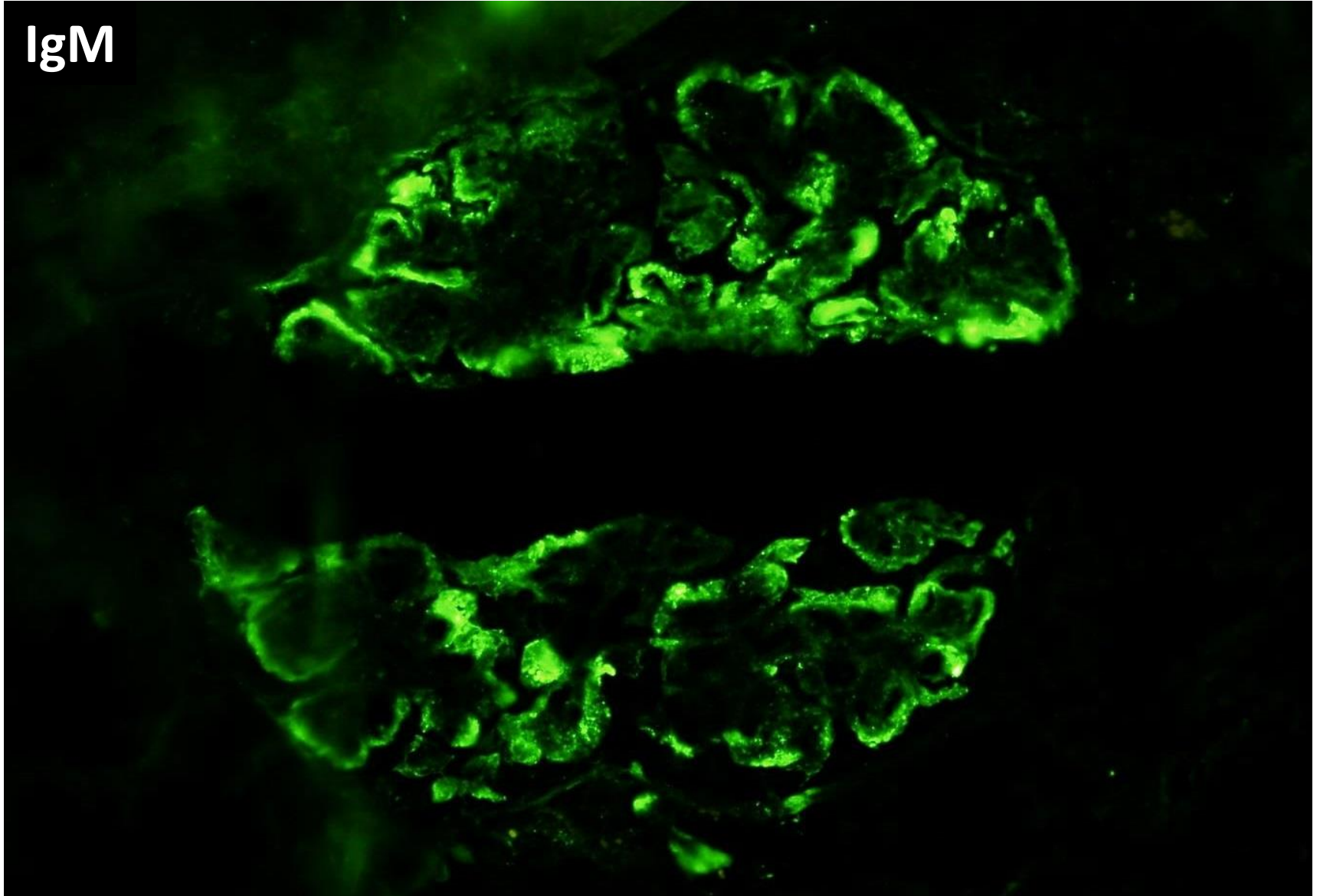


IgG

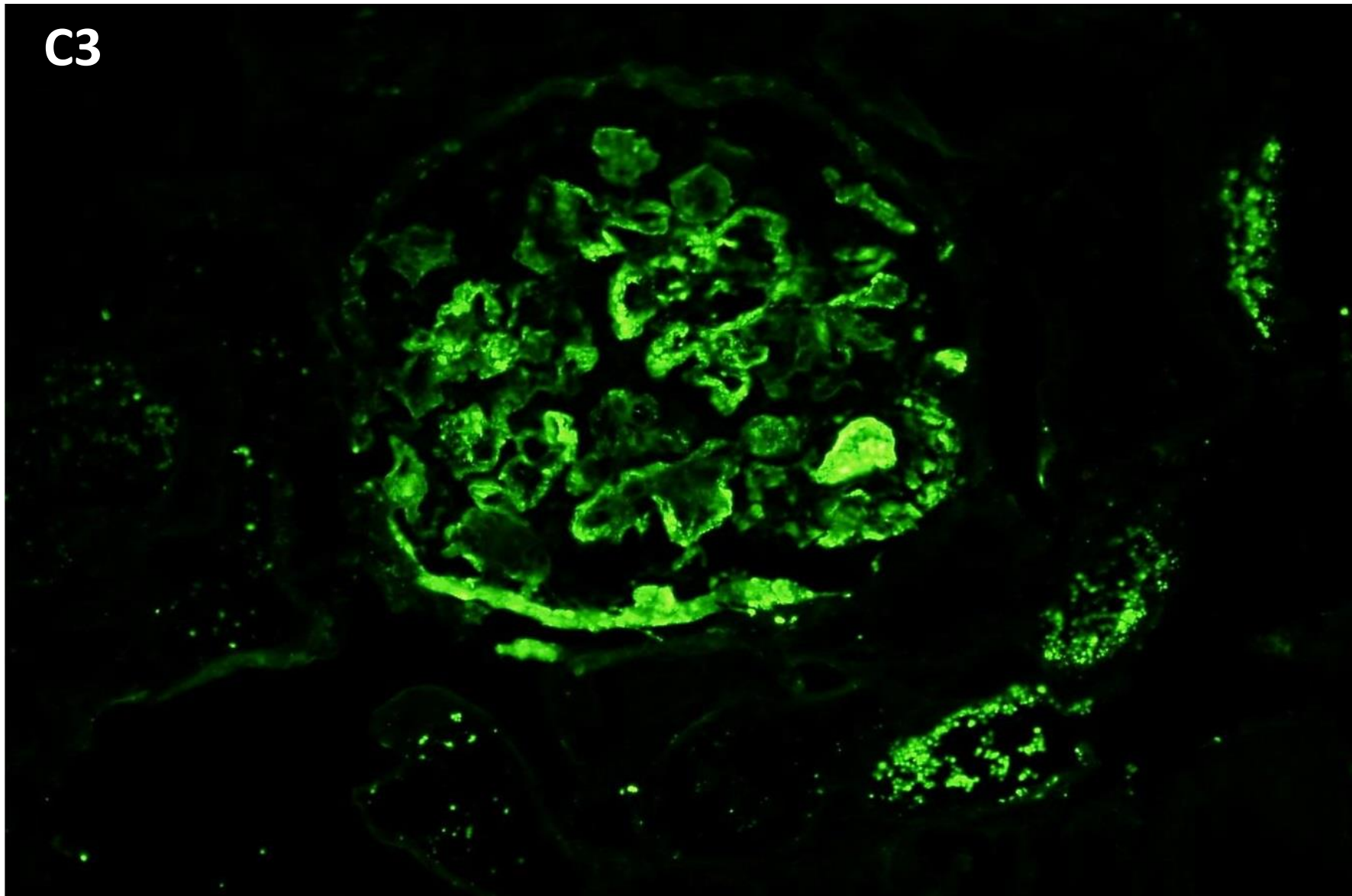




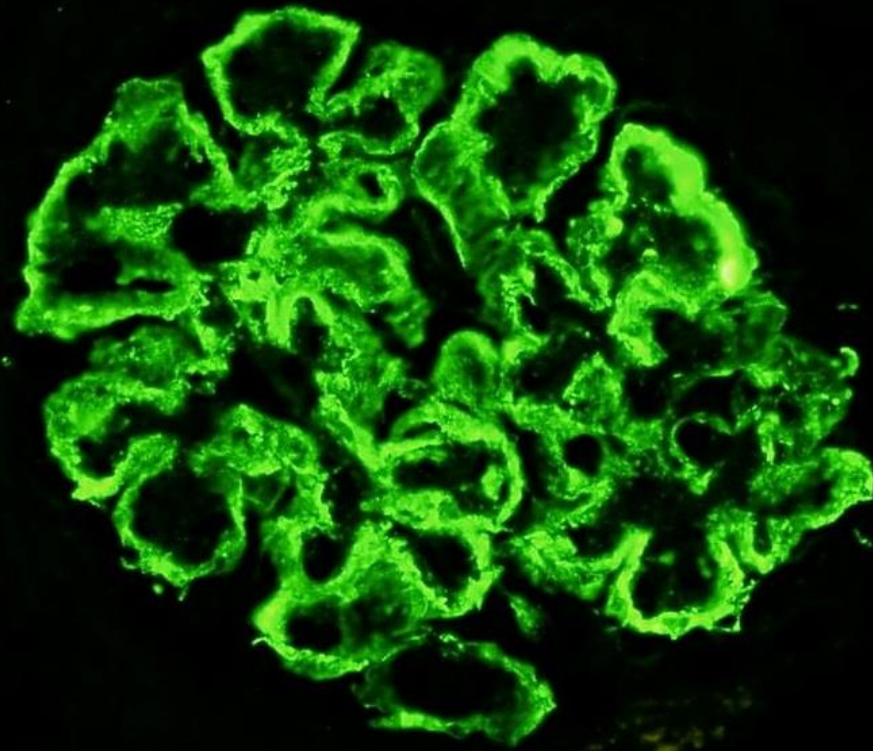
IgM



C3

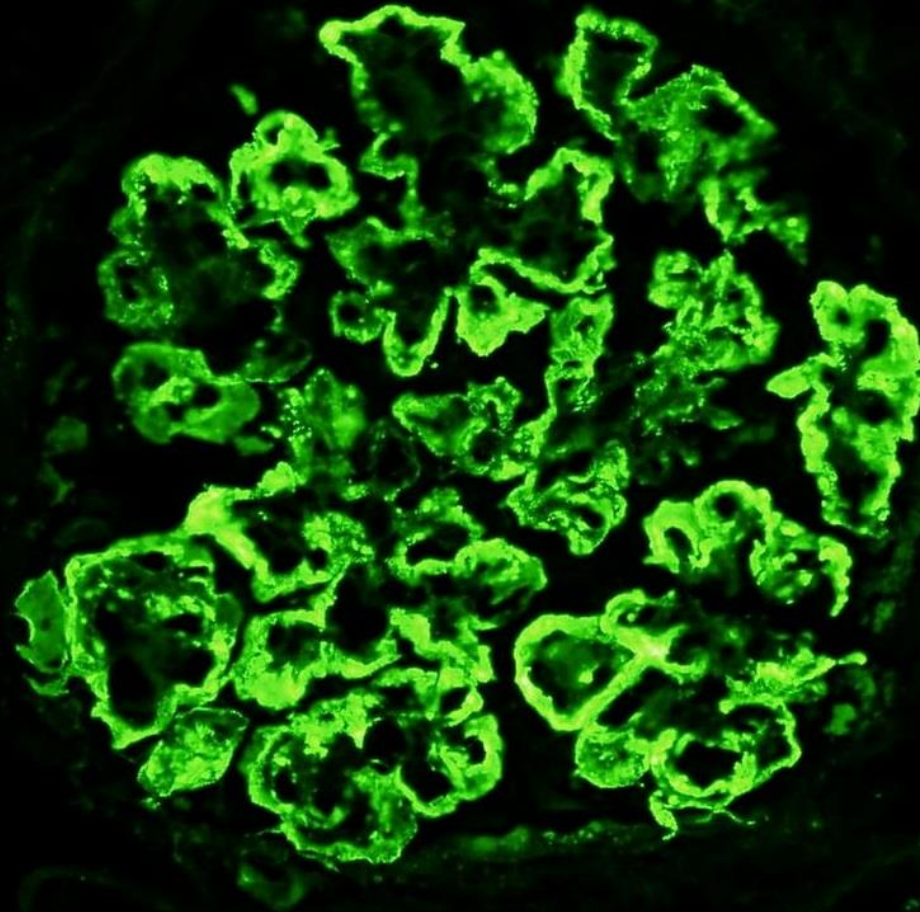


C1q

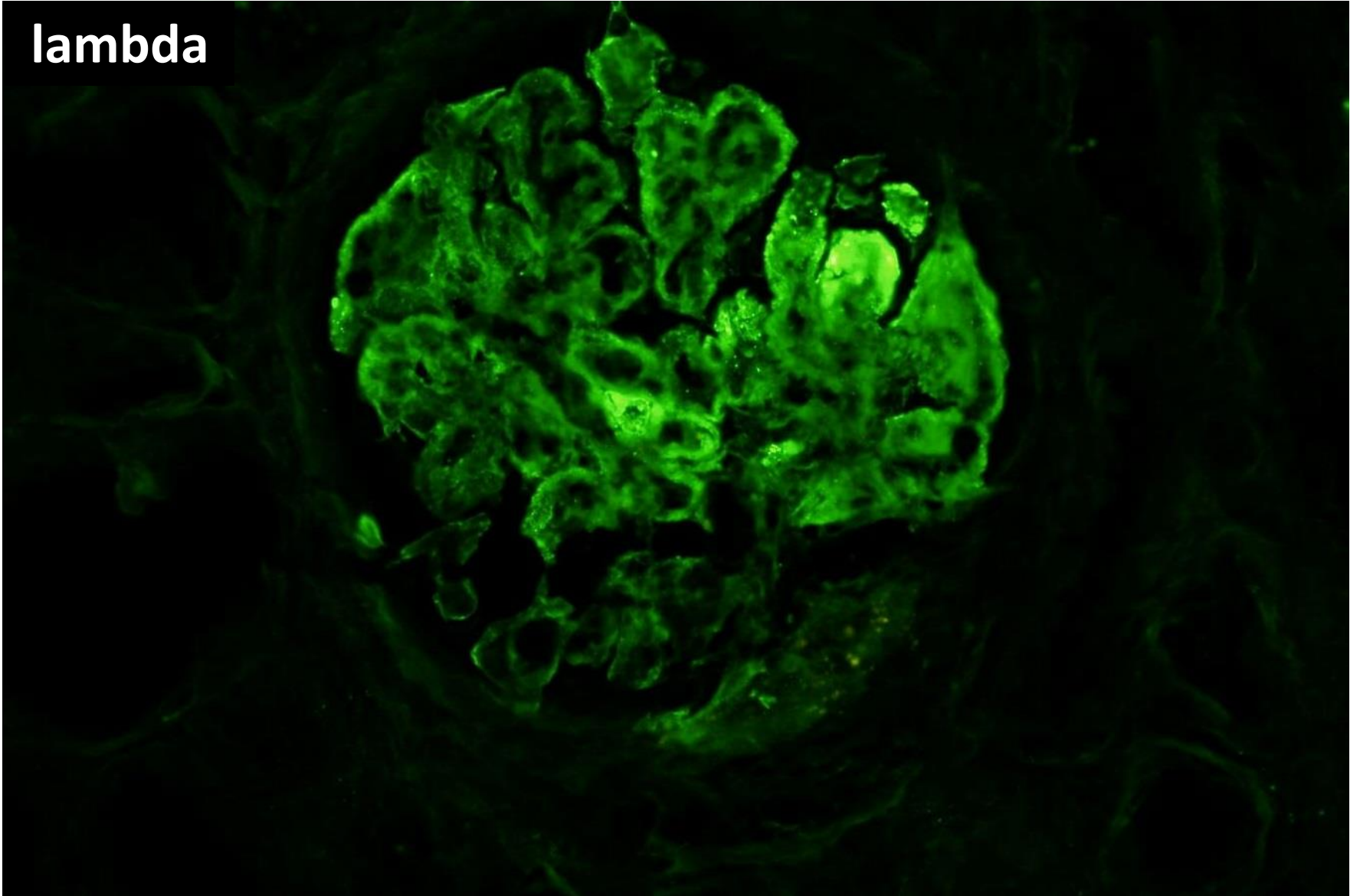




kappa



**lambda**







# RENAL BIOPSY CLINICOPATHOLOGICAL WORKSHOP 2018

No glomeruli were present in the tissue received for electron  
microscopy.  
Ultrastructural studies were not performed.





# RENAL BIOPSY CLINICOPATHOLOGICAL WORKSHOP 2018

