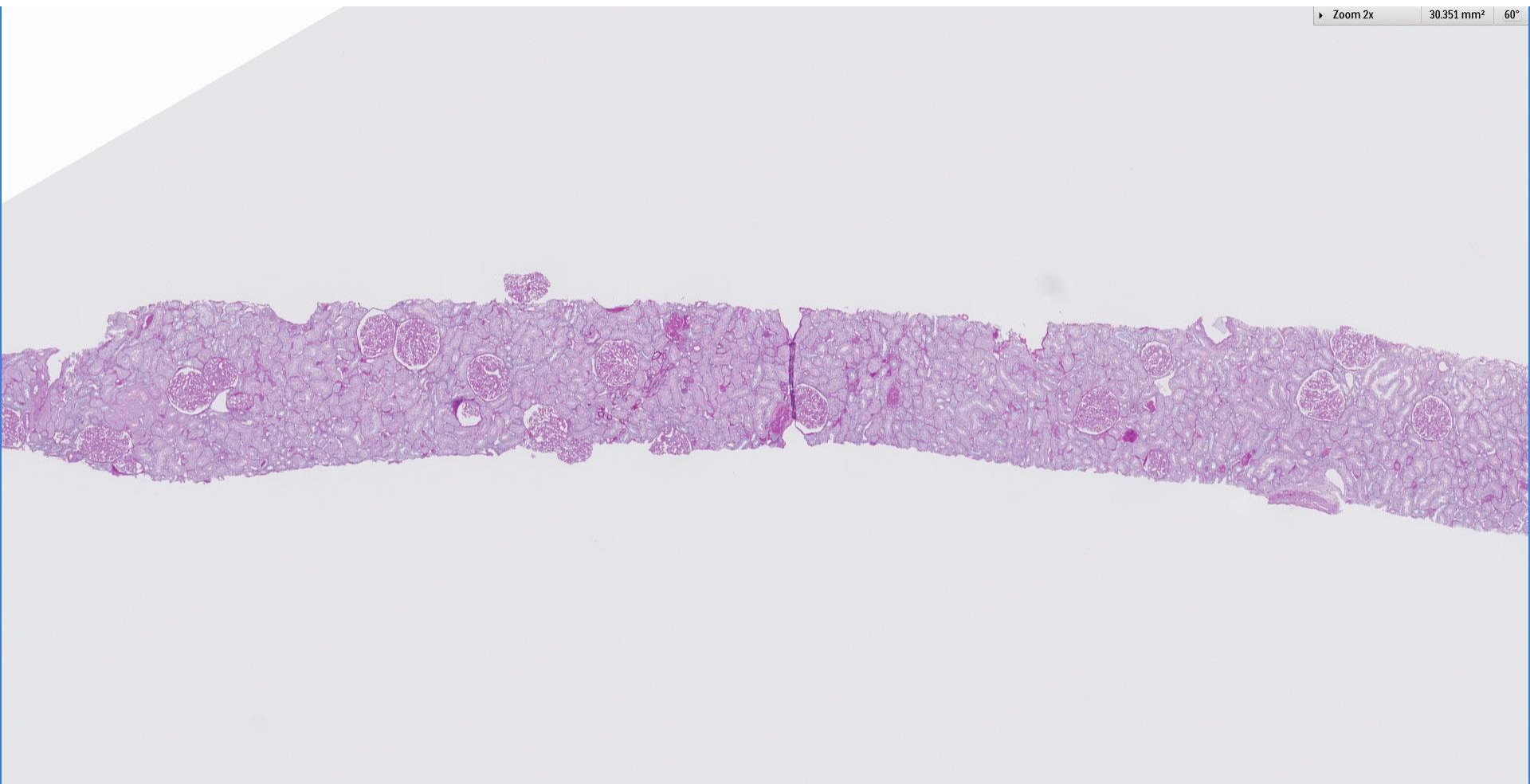
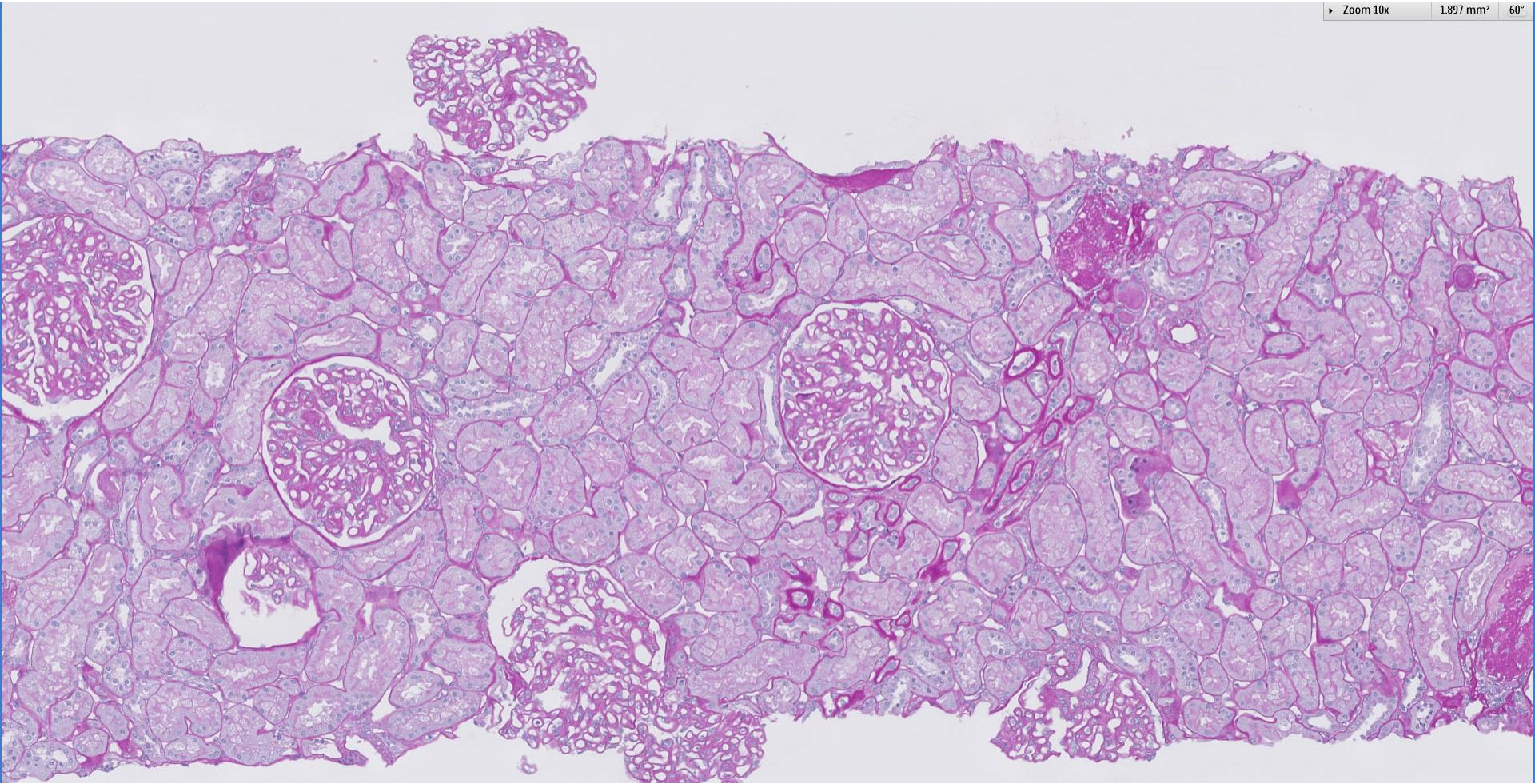
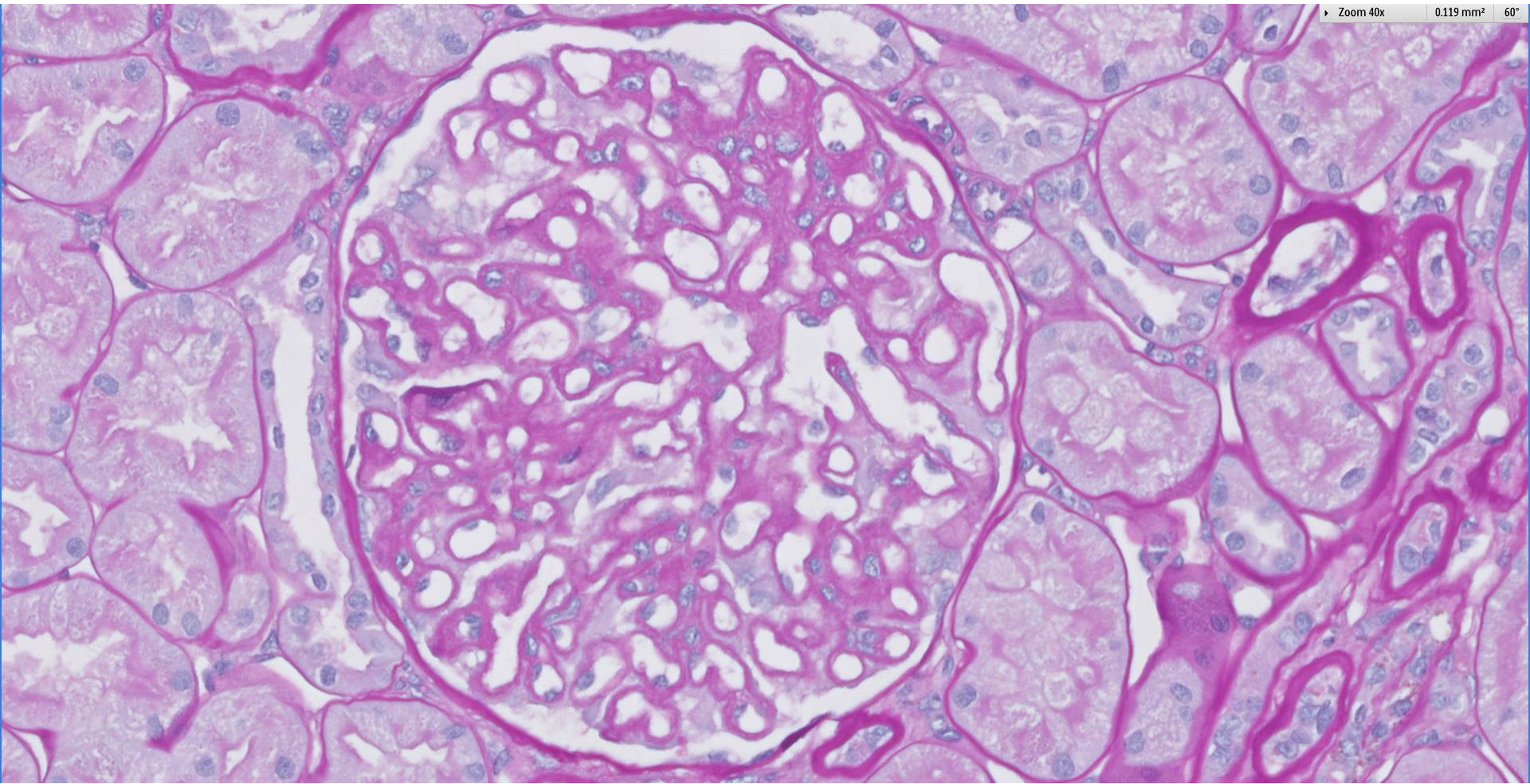


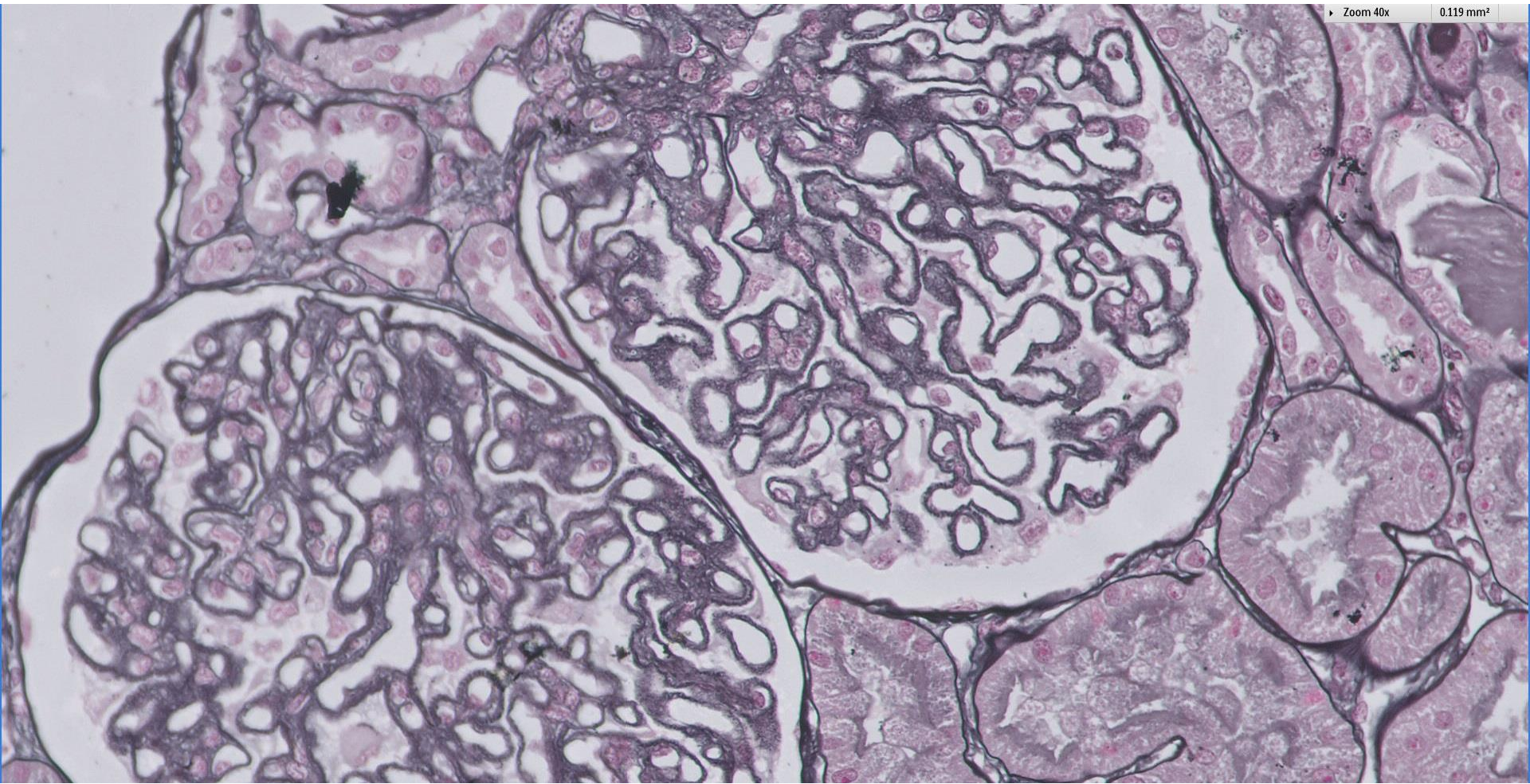
Case 33

68 year old female previously diagnosed with Class V lupus nephritis 10 years ago now has increasing proteinuria and glomerular haematuria.

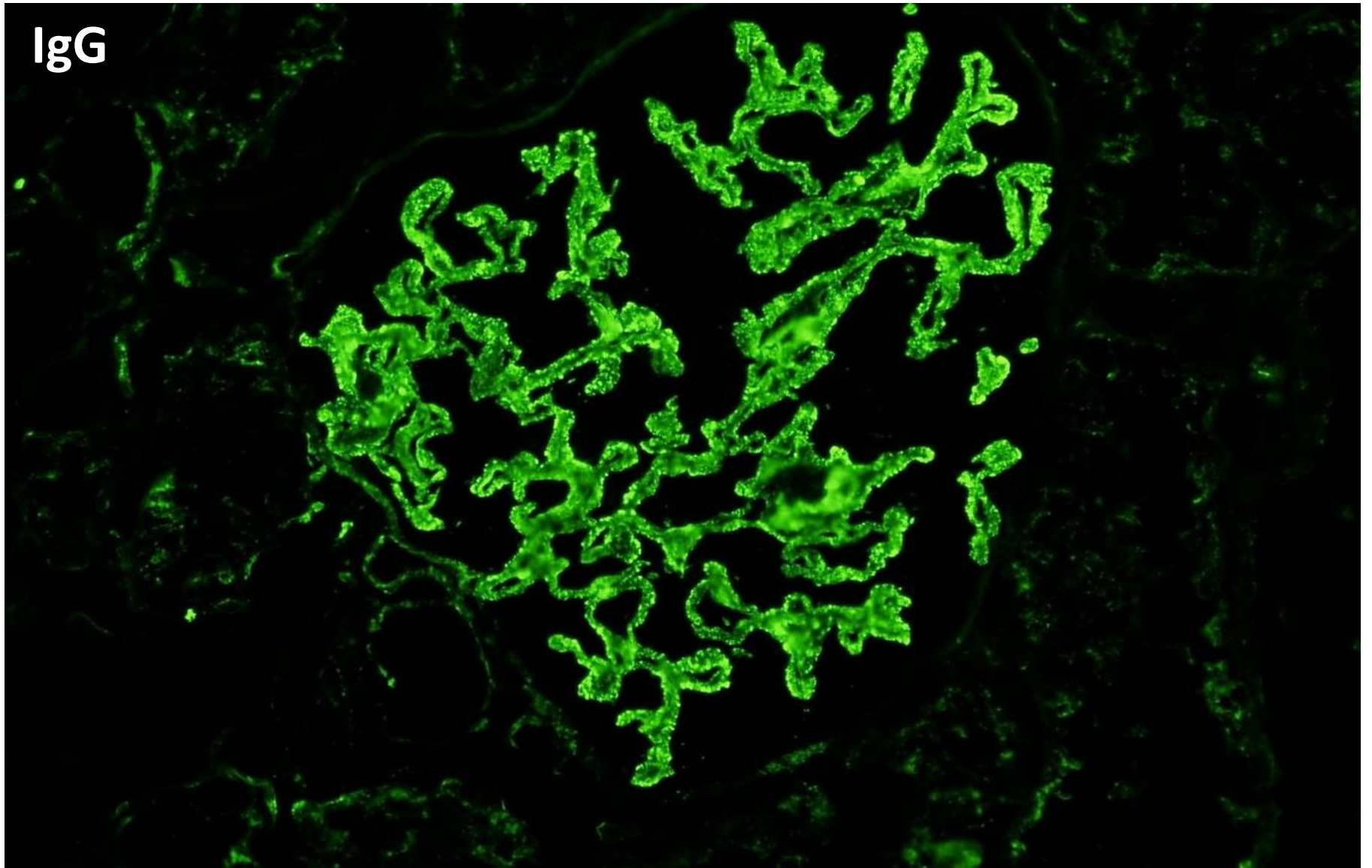




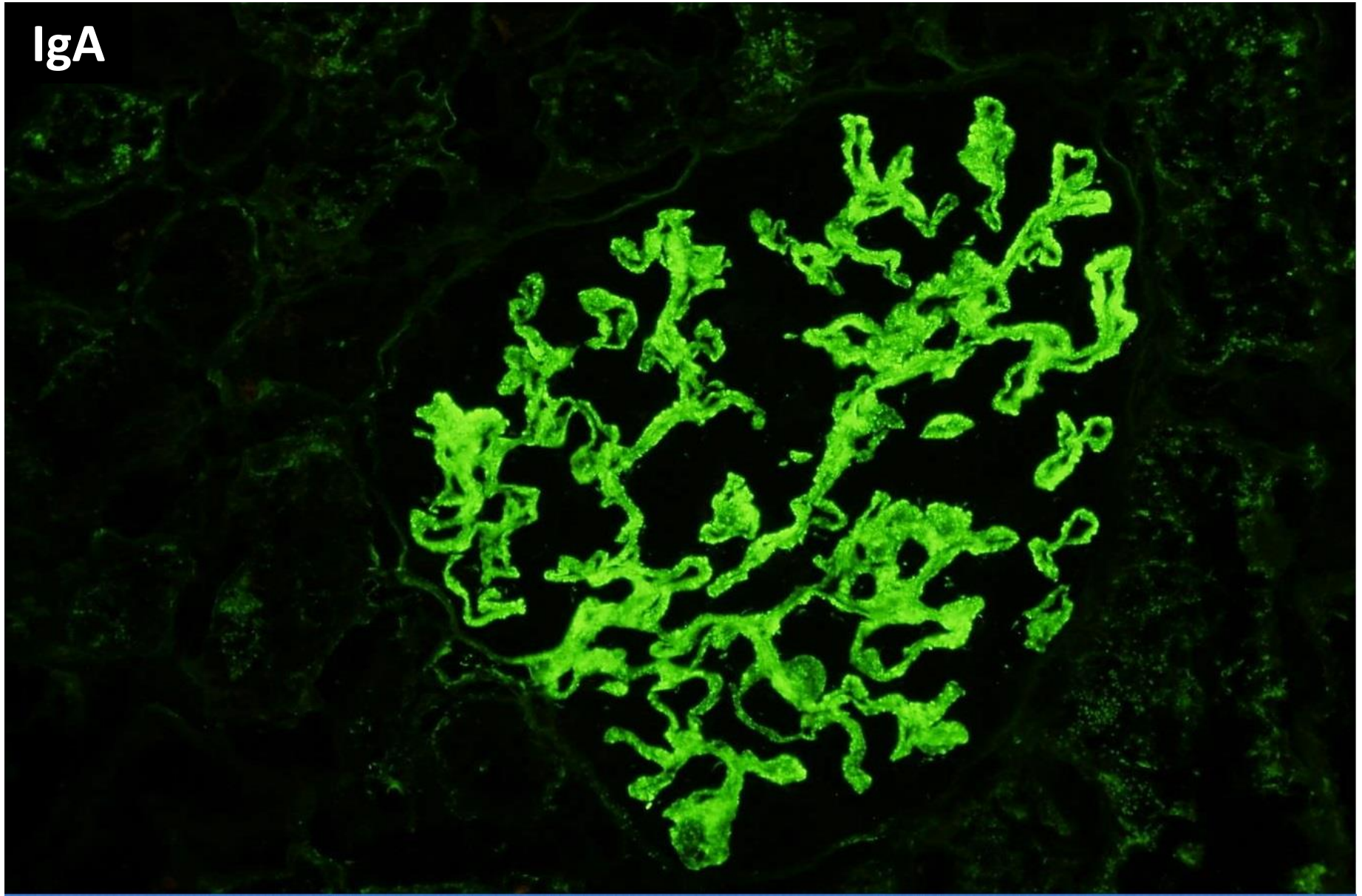




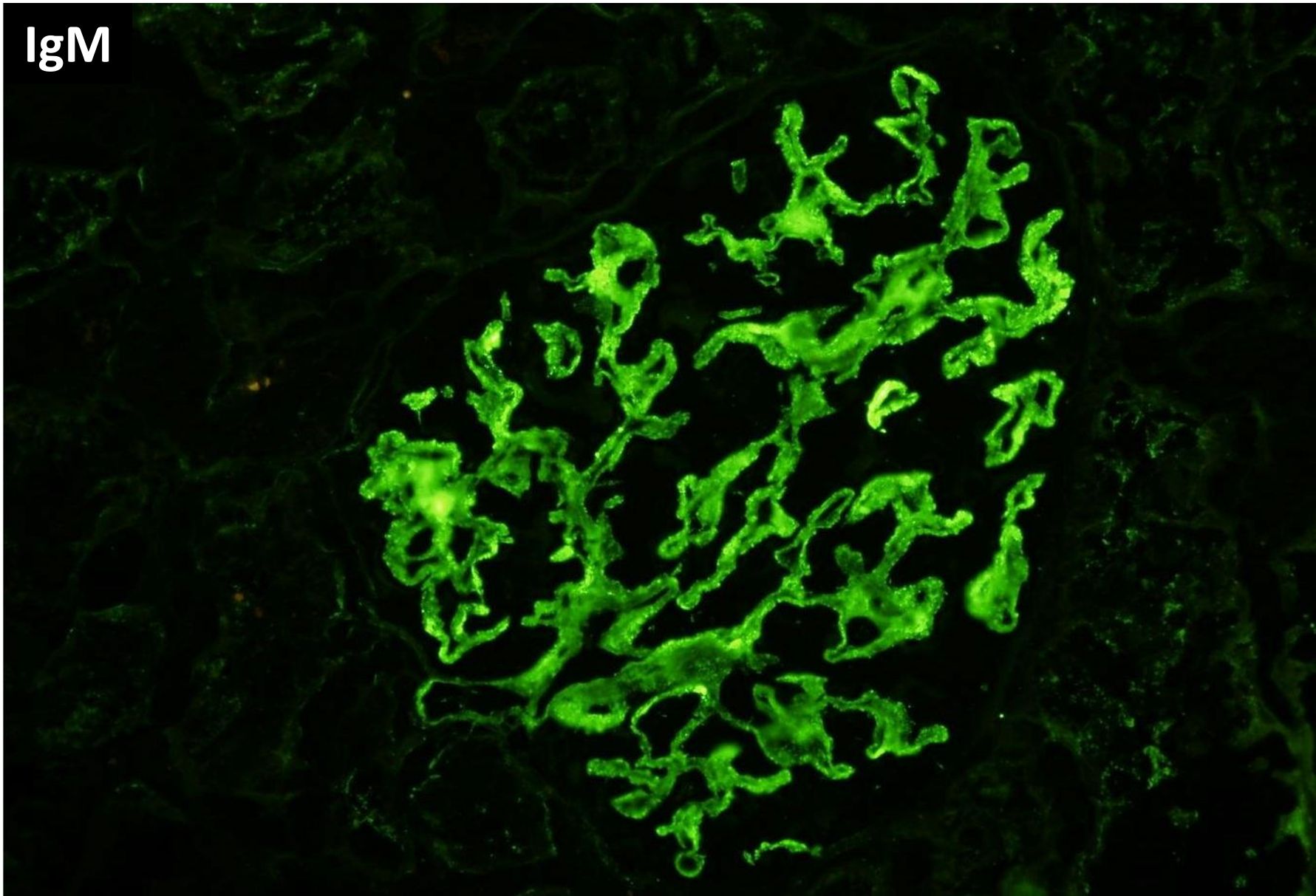
IgG



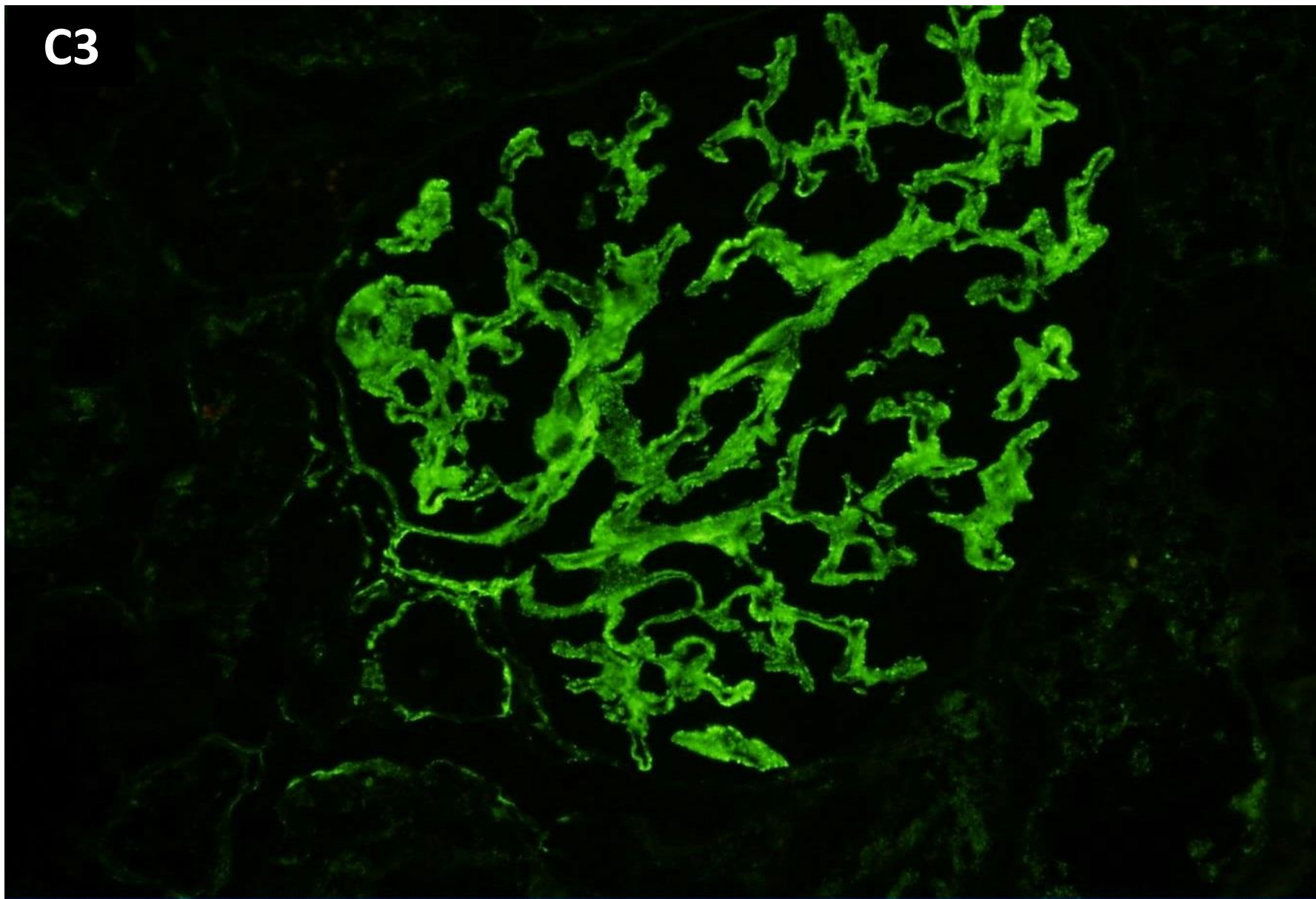
IgA



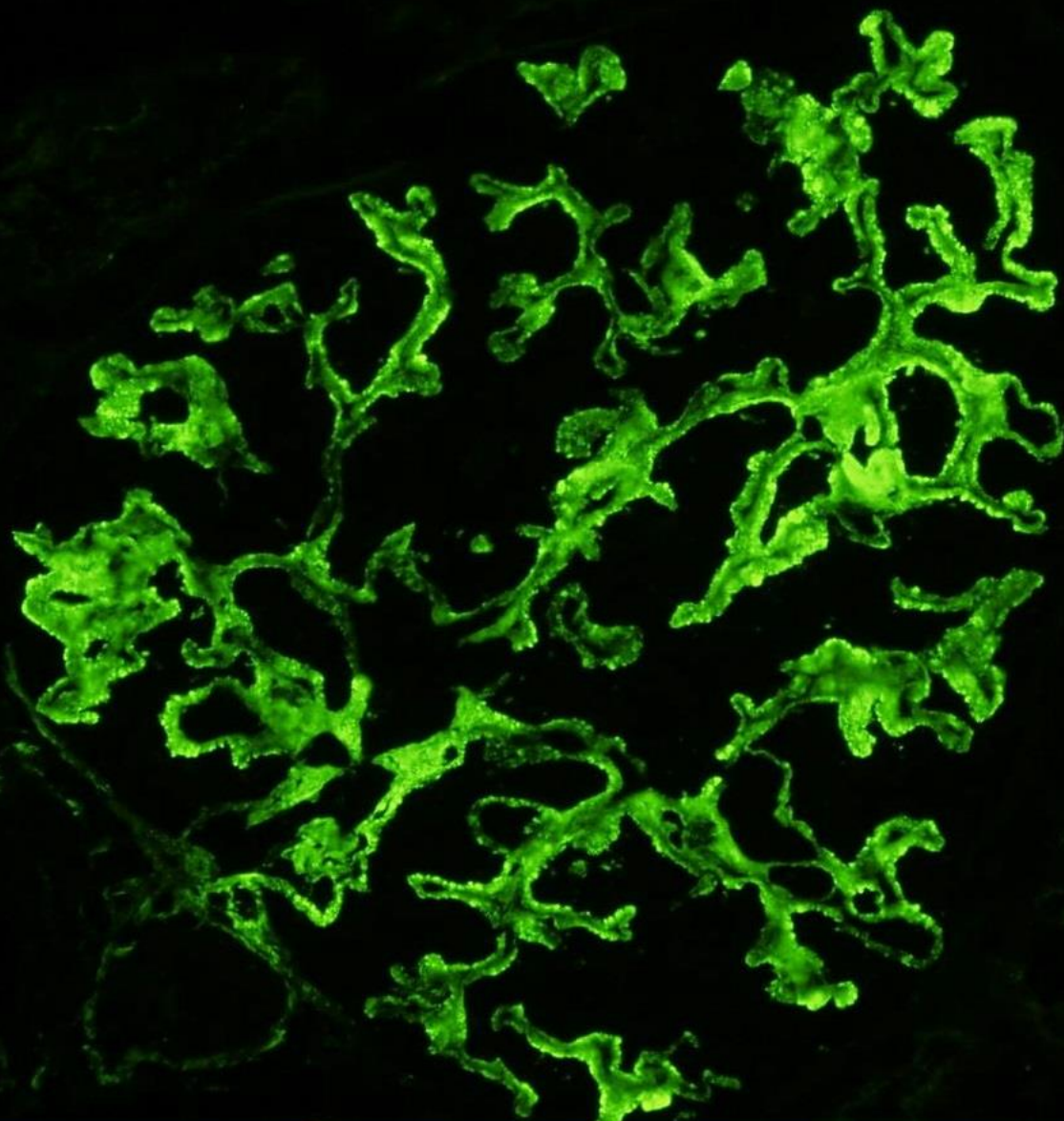
IgM



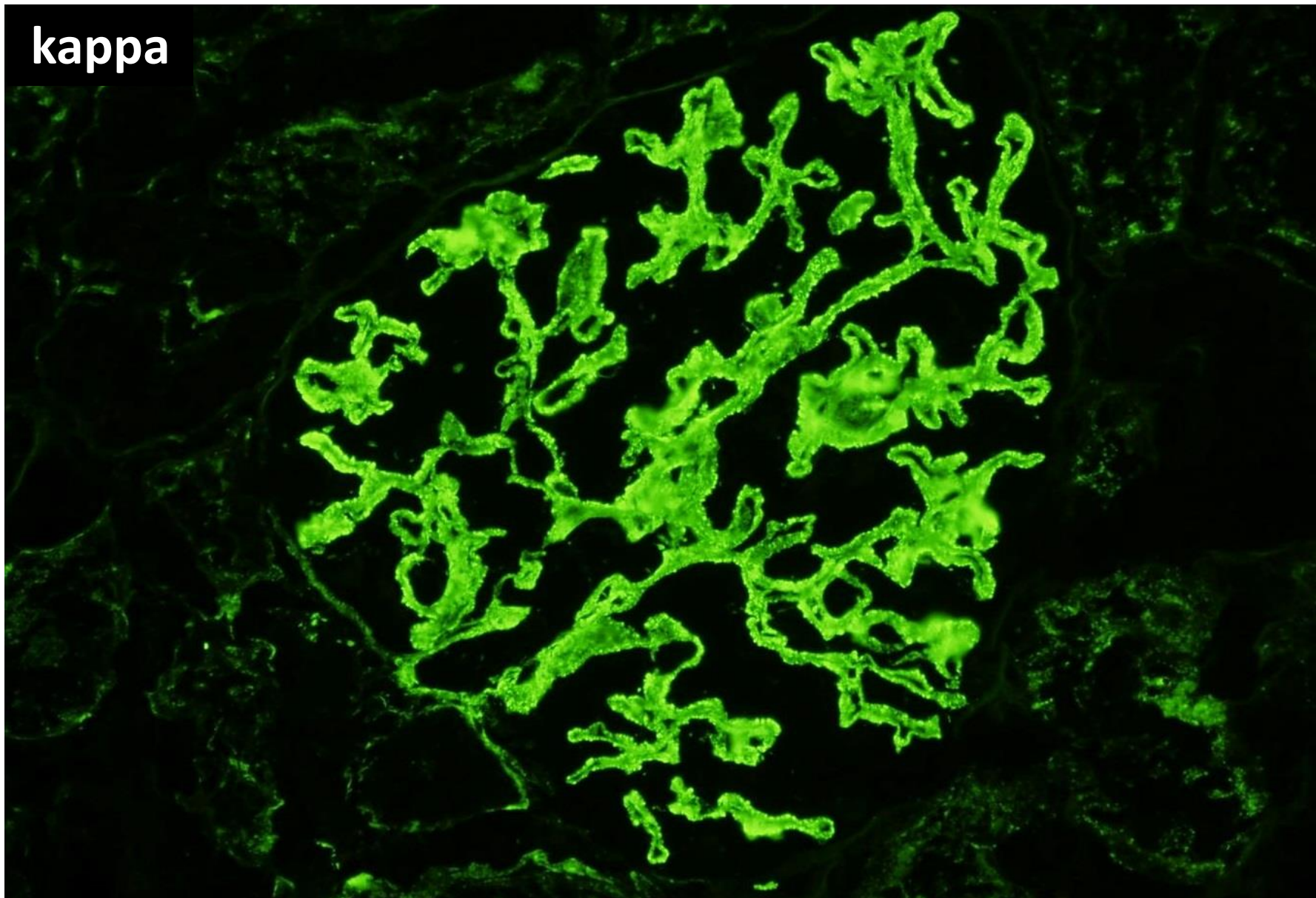
C3



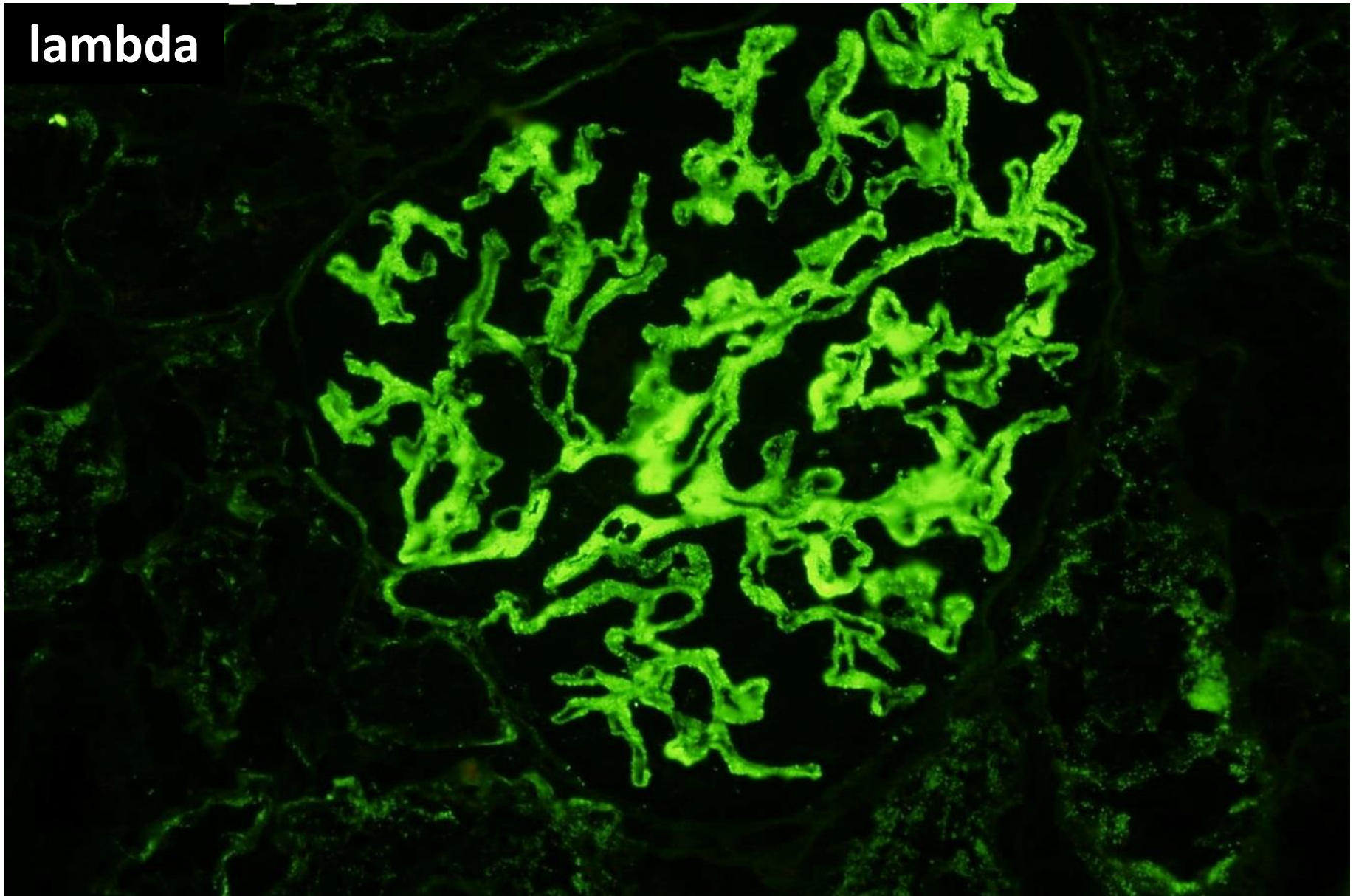
C1q



kappa



lambda



Electron microscopy not done.



RENAL BIOPSY CLINICOPATHOLOGICAL WORKSHOP 2018



PATHOLOGY



Division of Pathology
Singapore General Hospital



Department of Renal Medicine
Singapore General Hospital



MEDICINE