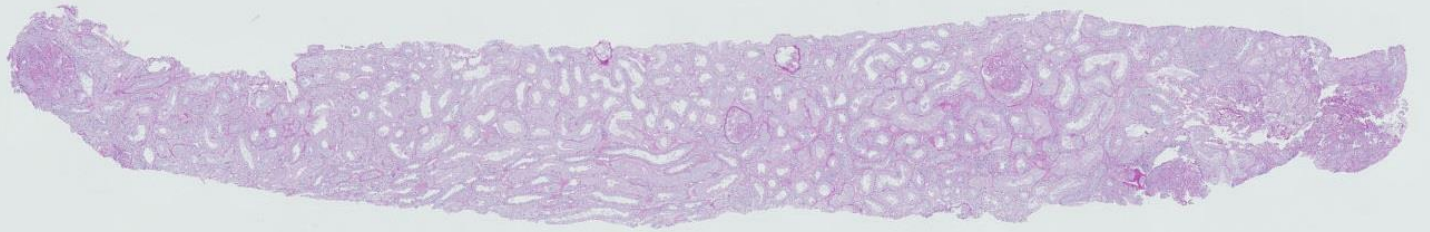
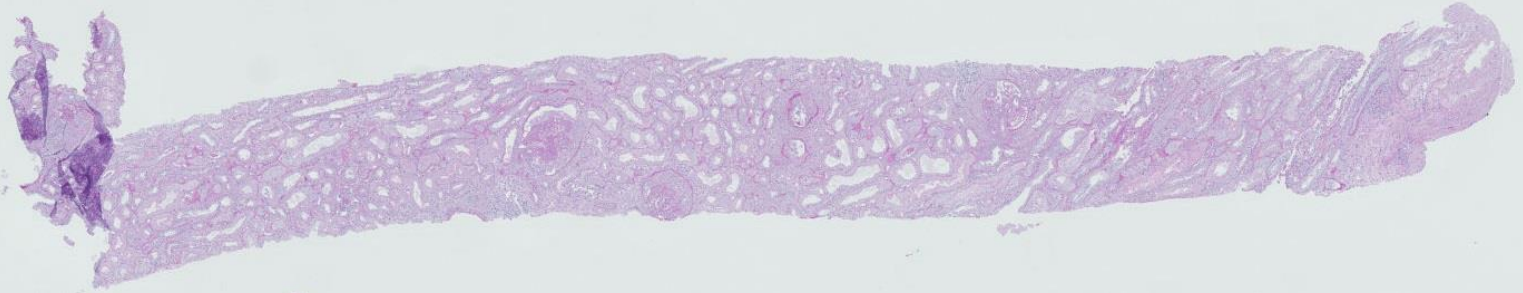
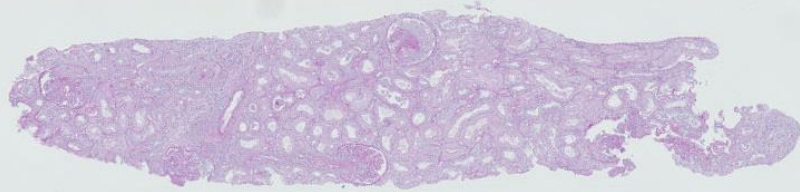
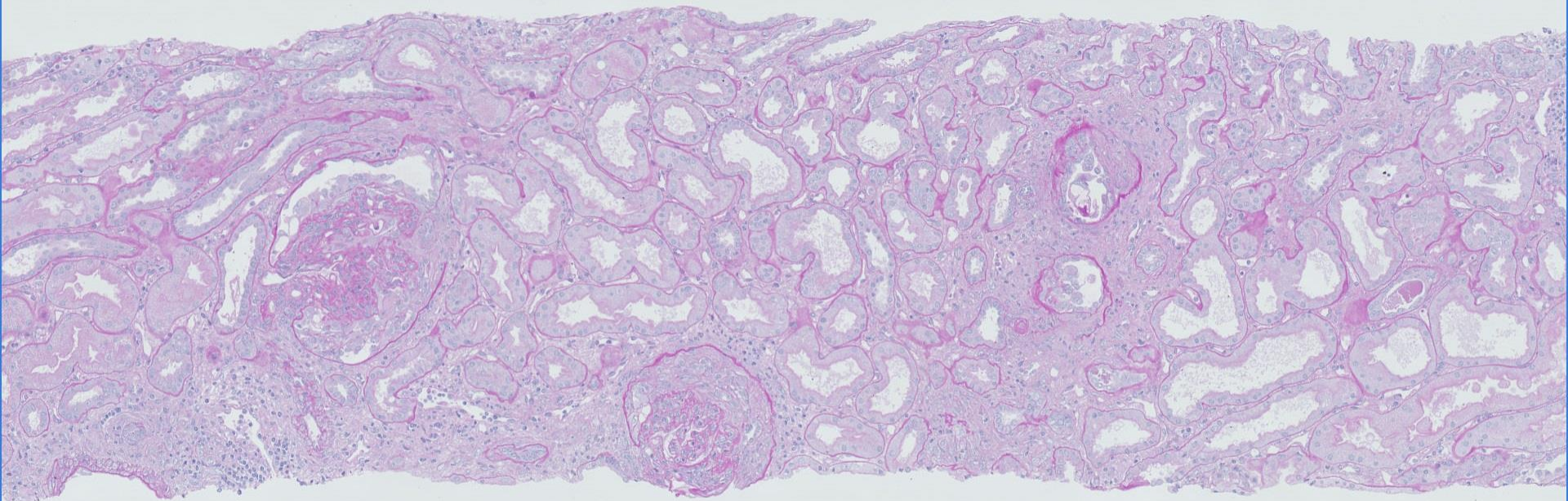
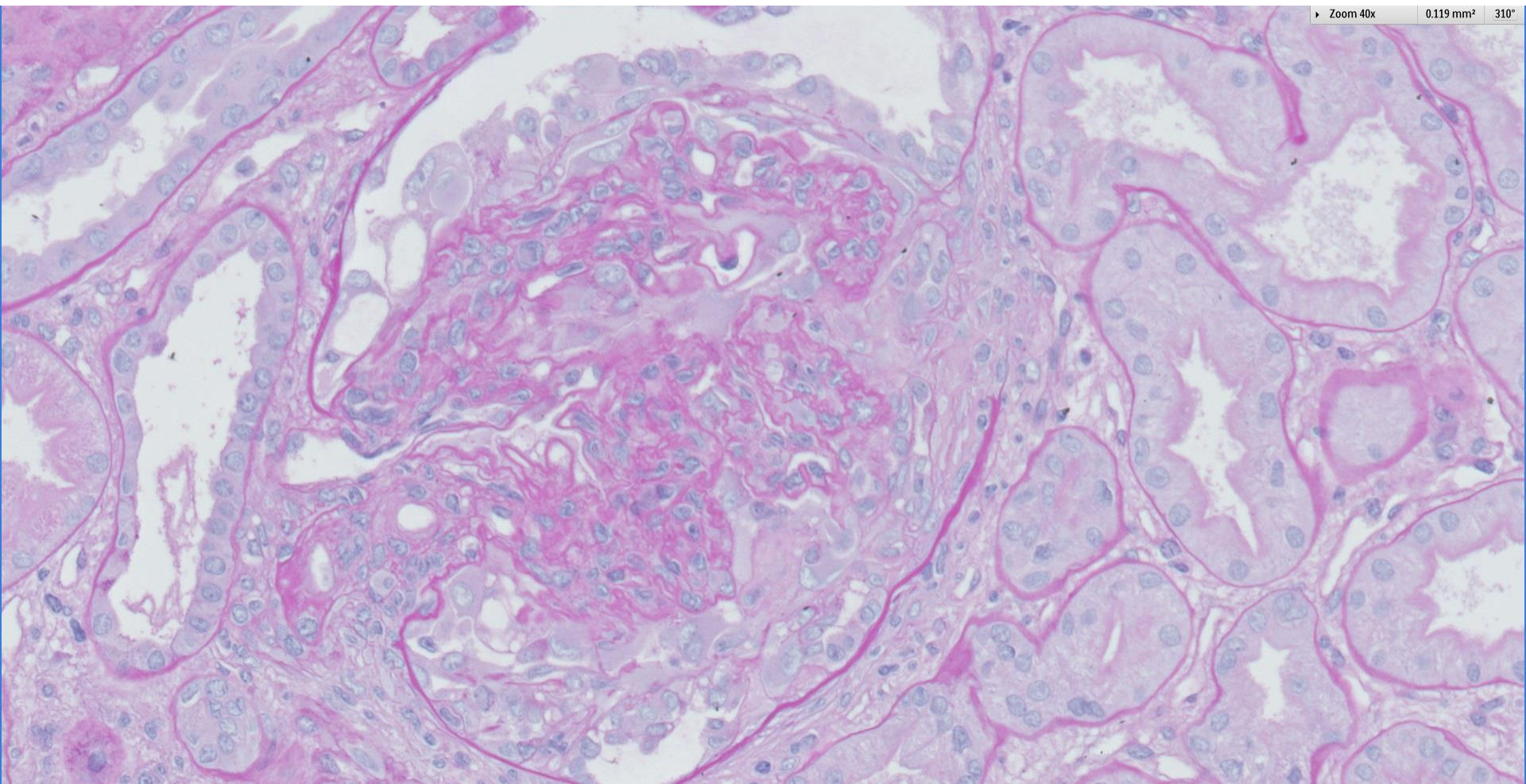


Case 32

25 year old female with haematuria and nephrotic syndrome. Positive for ANA and anti-dsDNA.

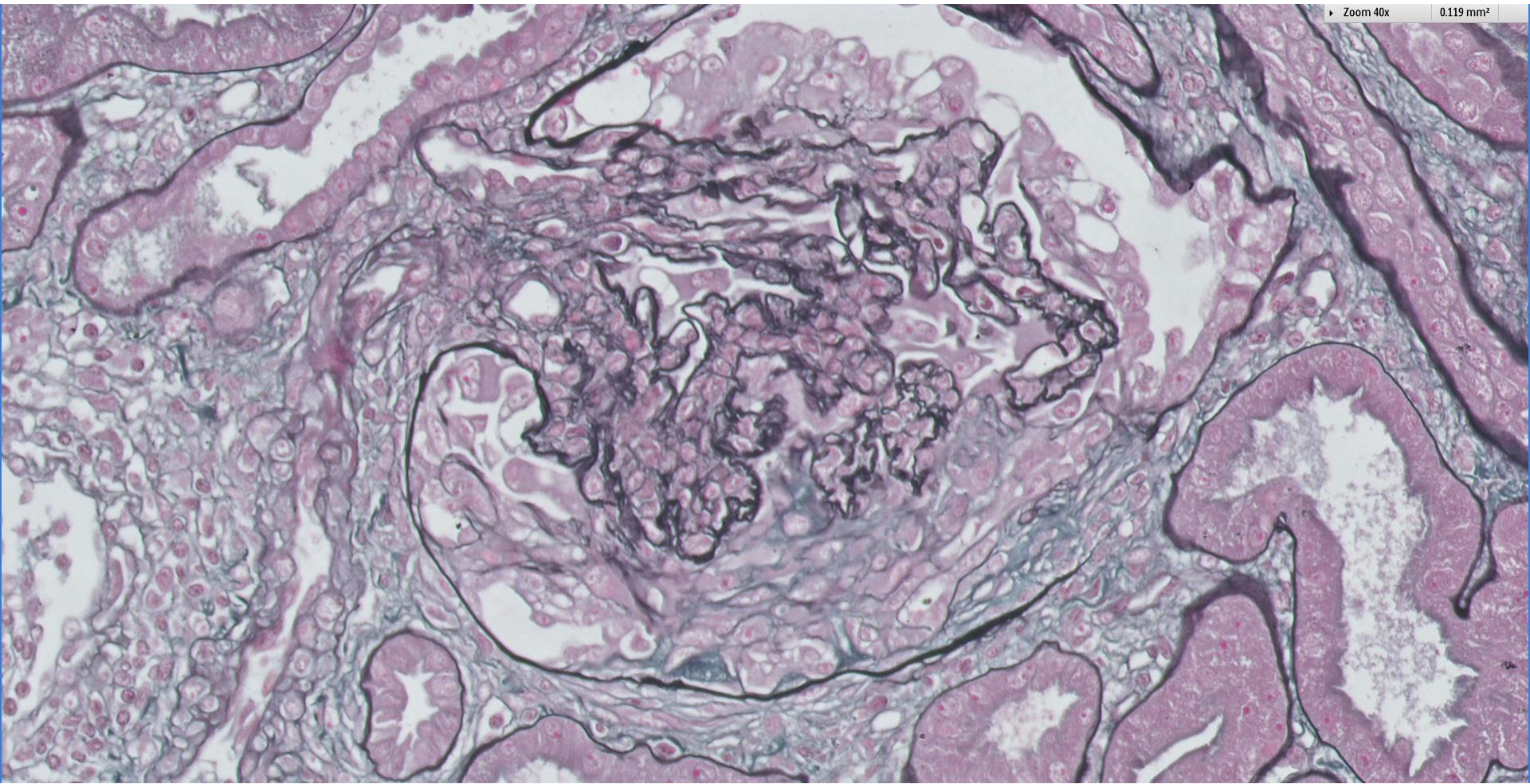




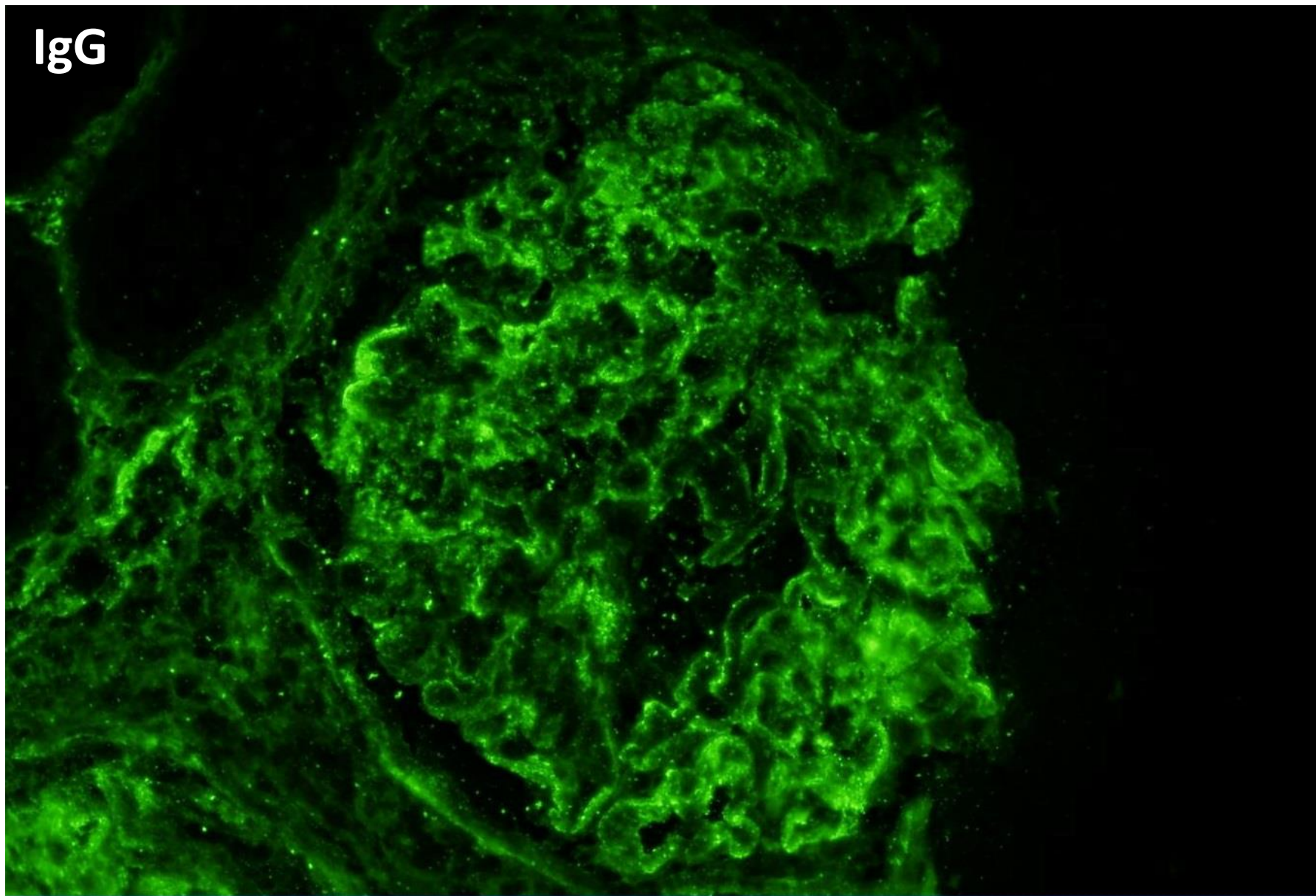


Zoom 40x

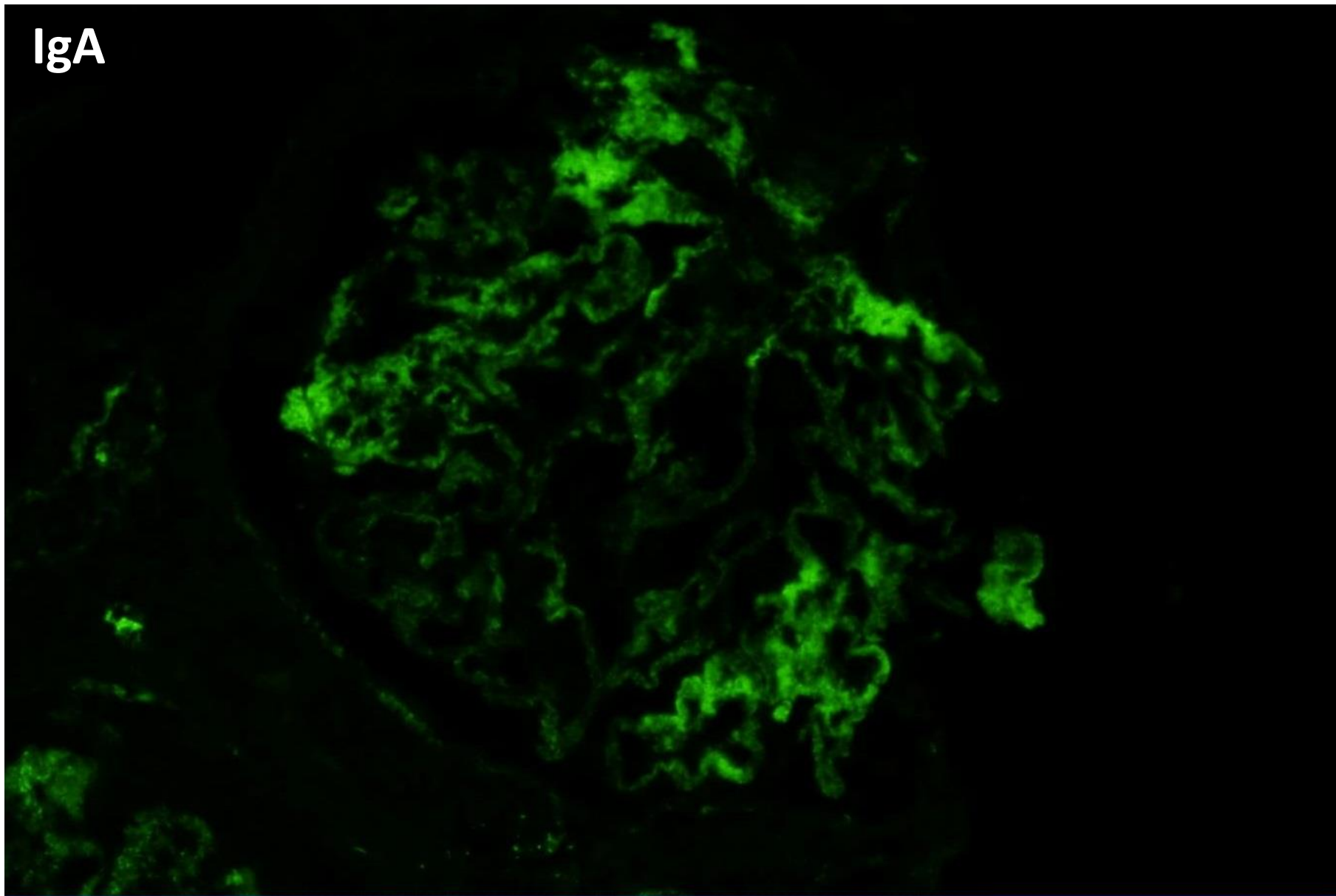
0.119 mm²



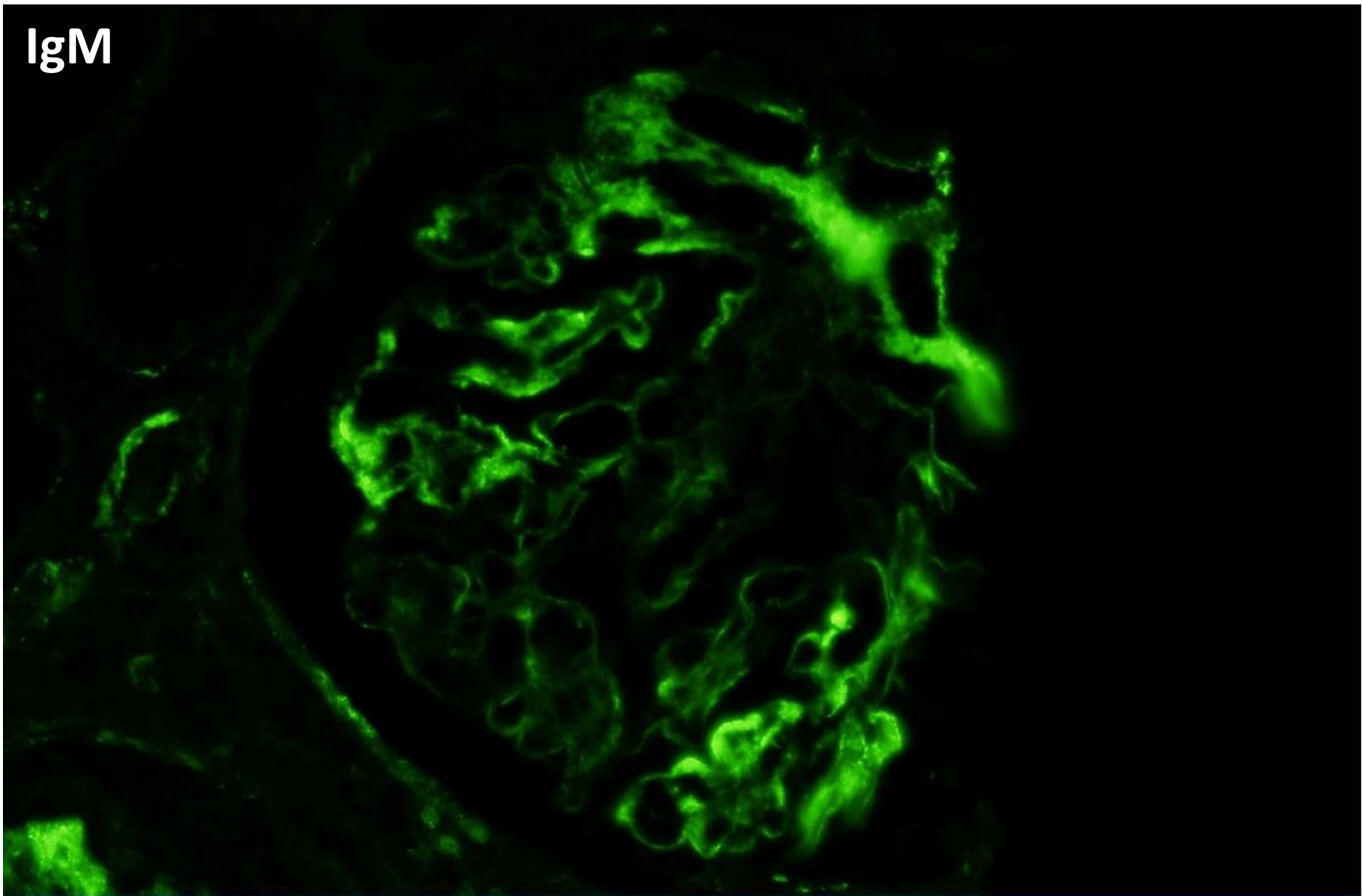
IgG



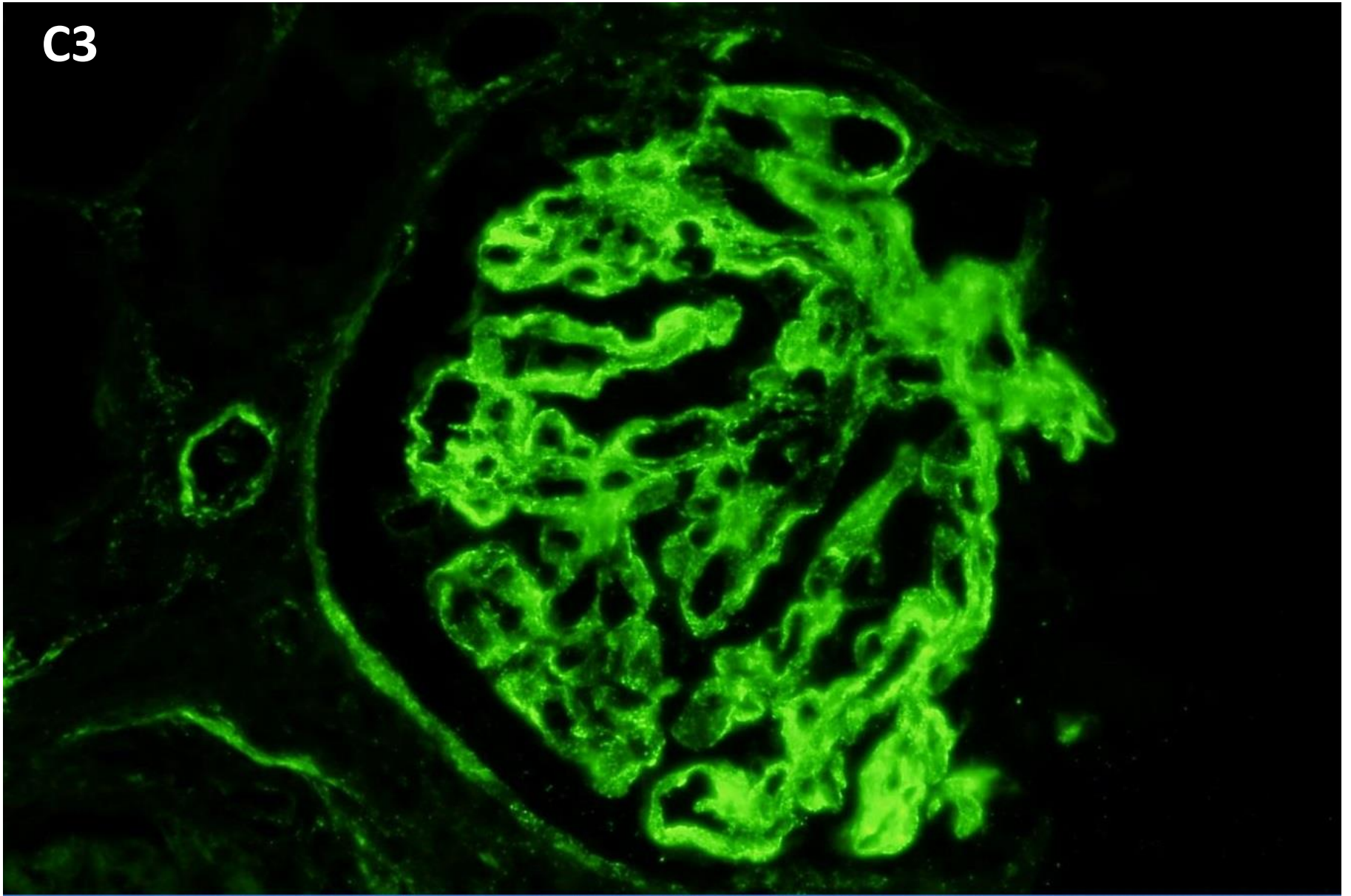
IgA



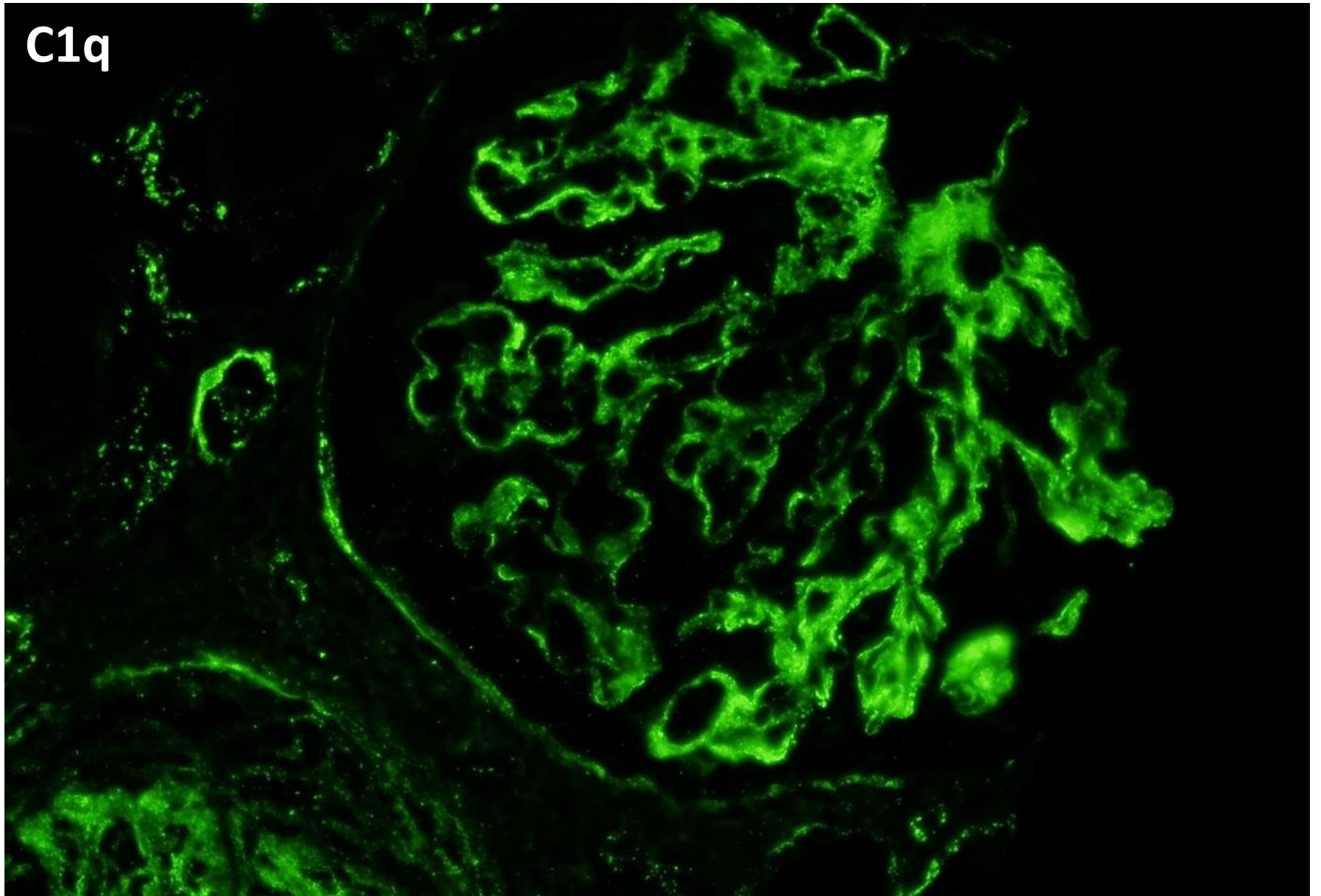
IgM



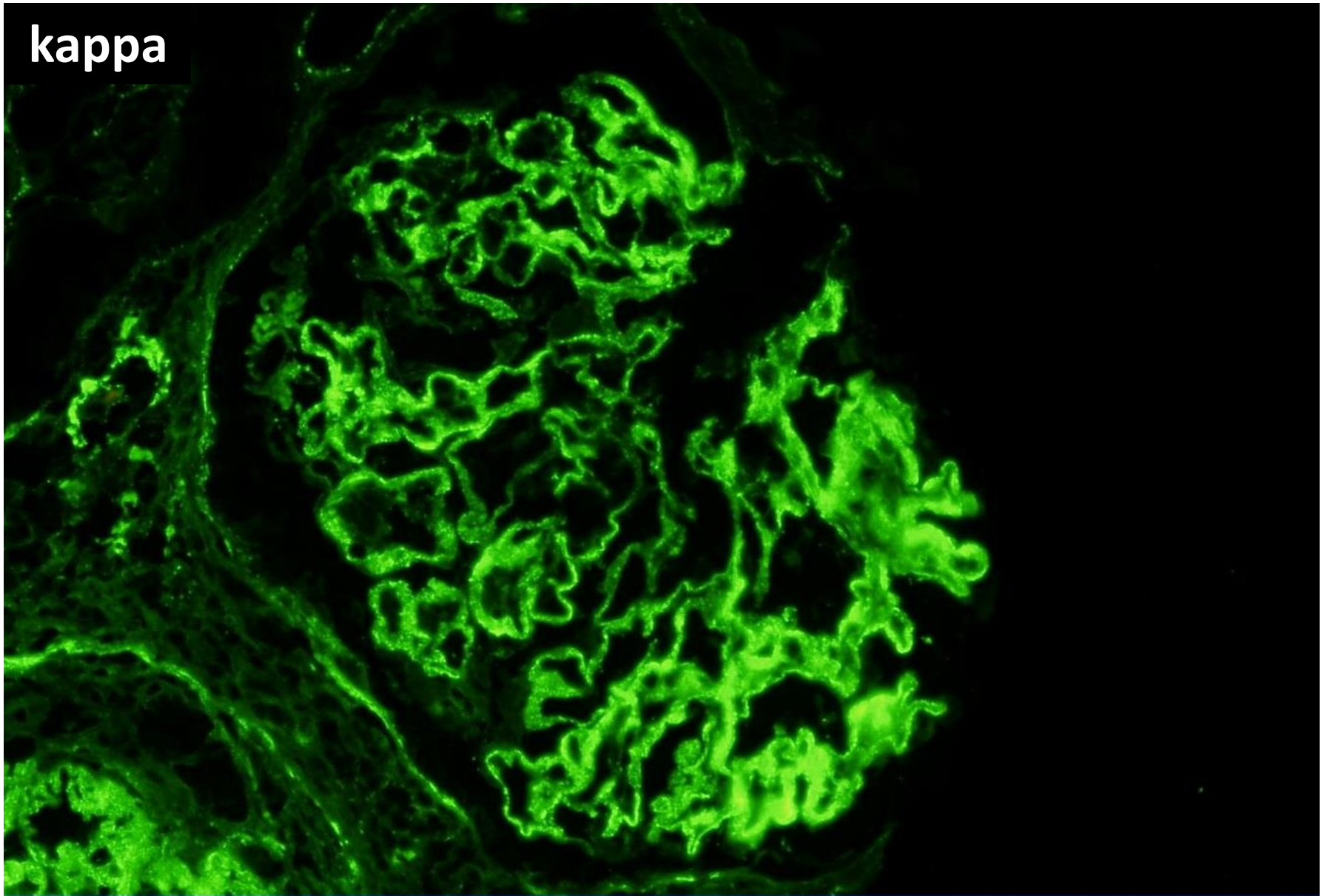
C3



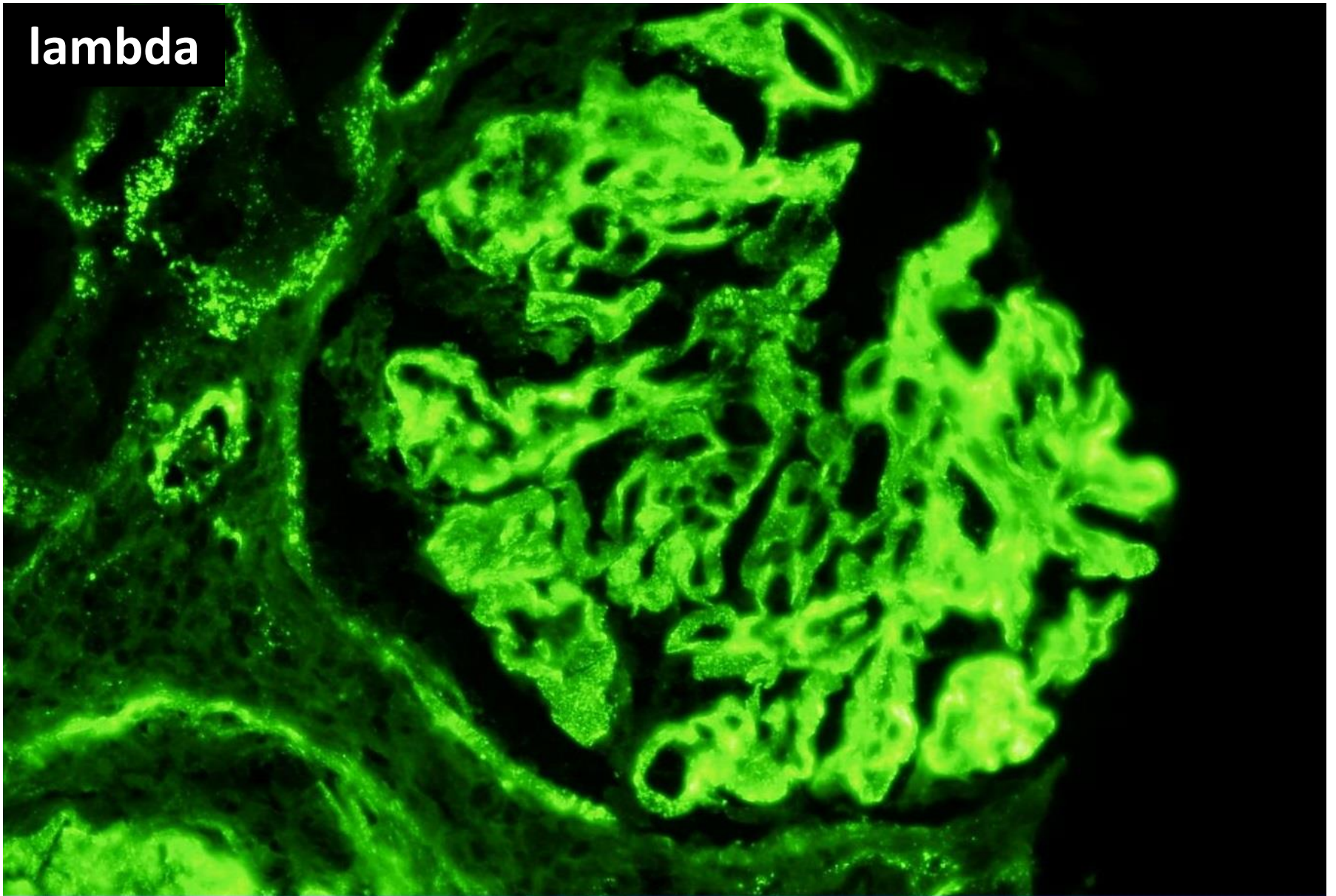
C1q

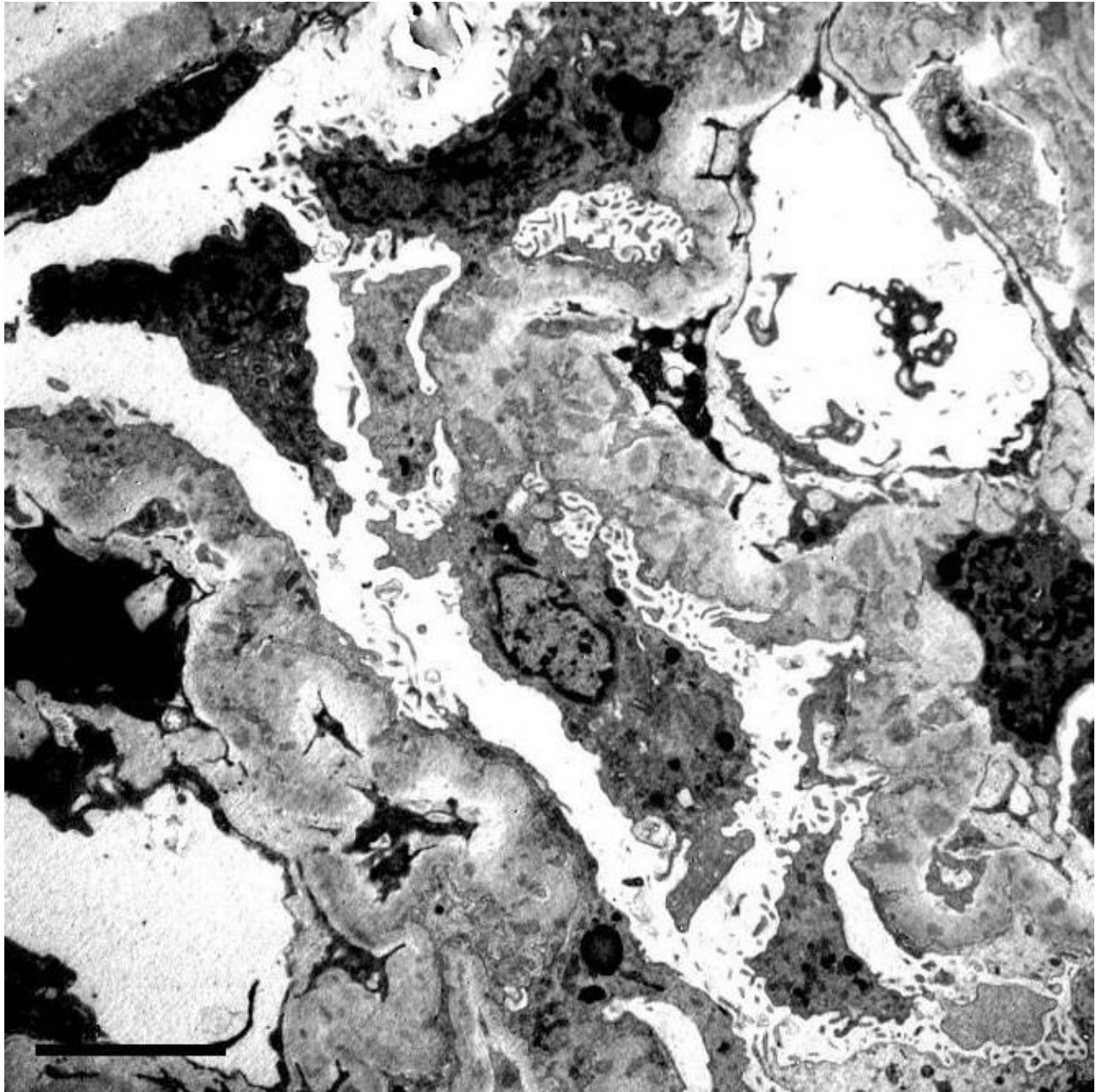


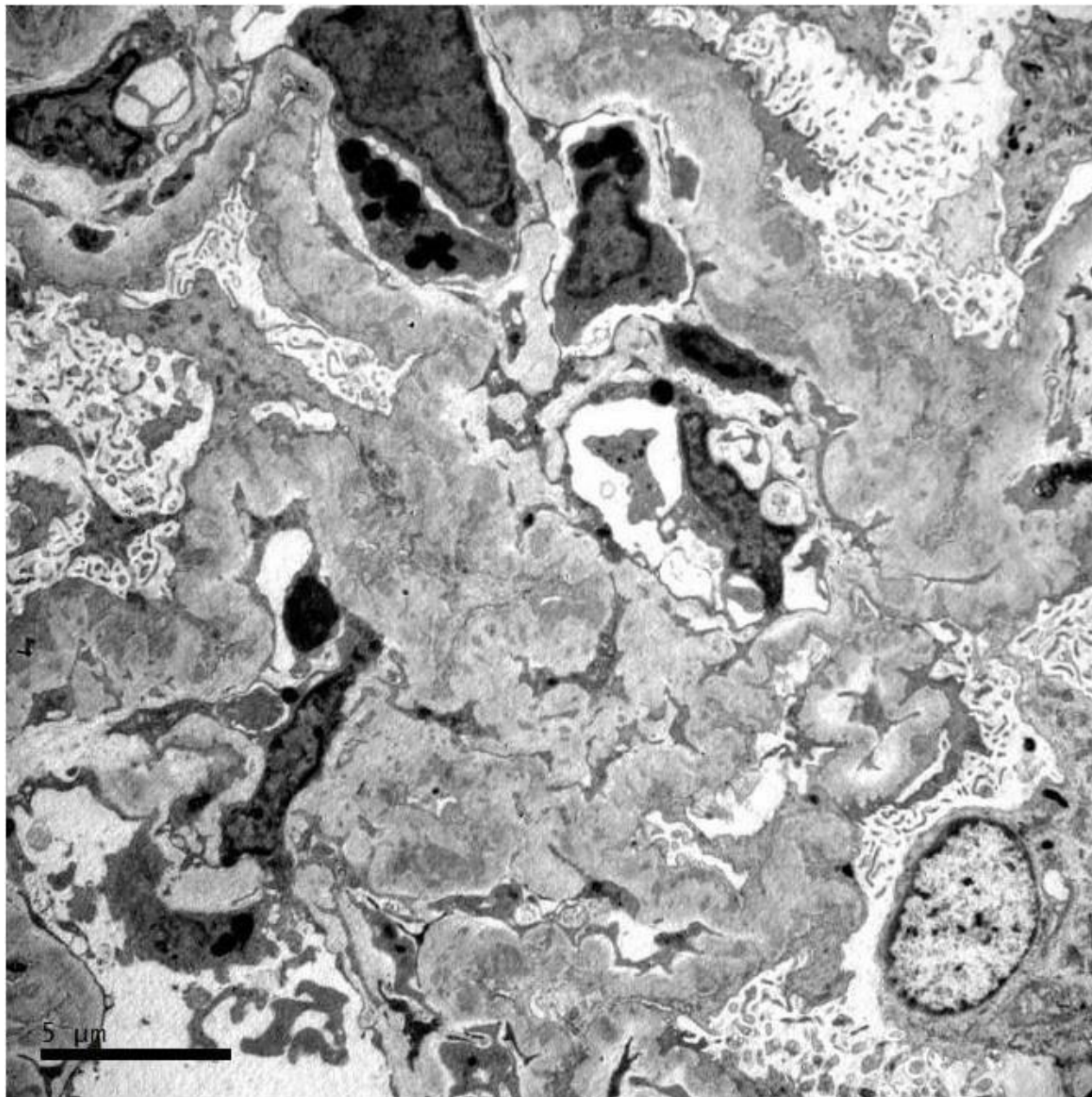
kappa

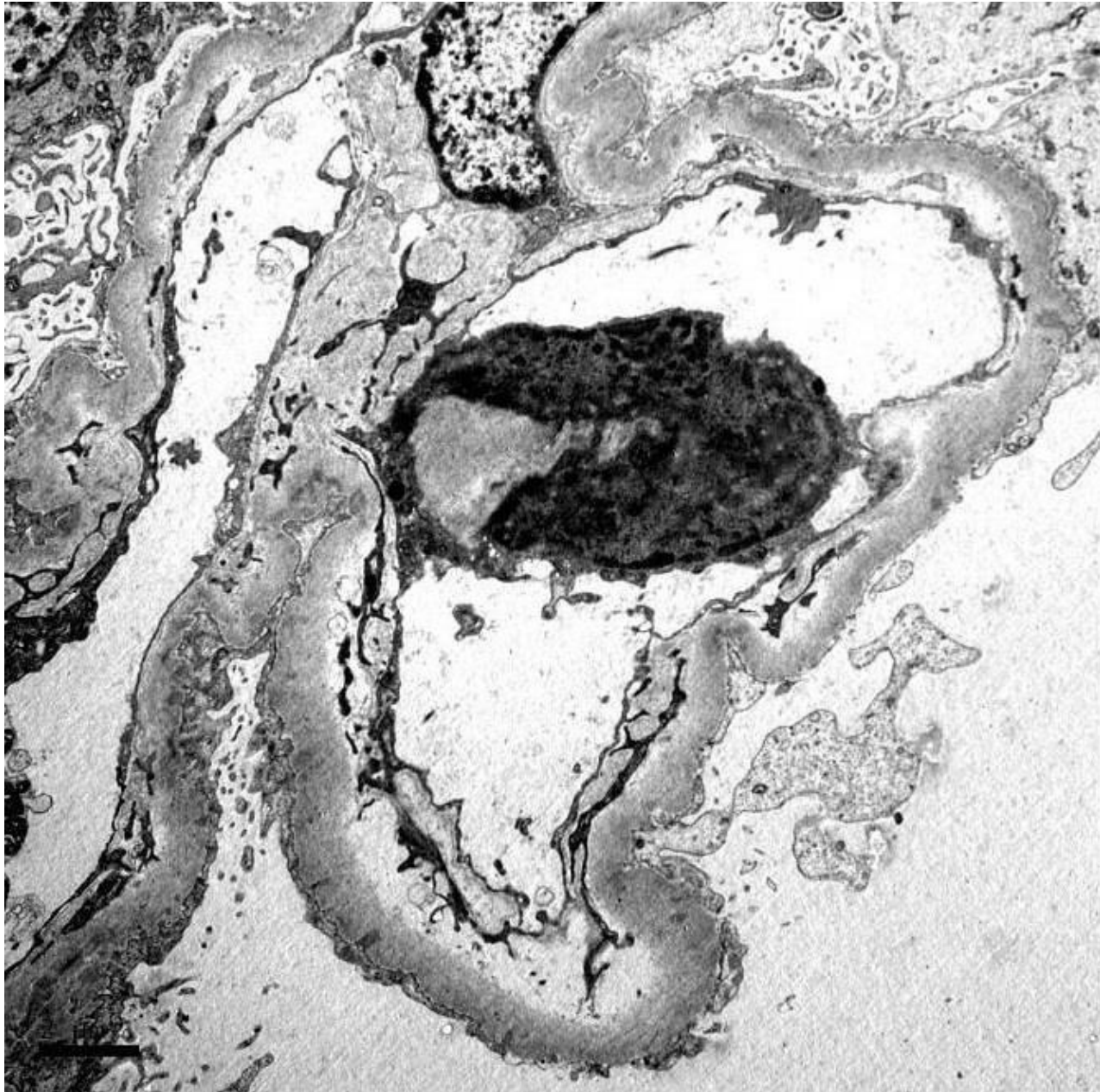


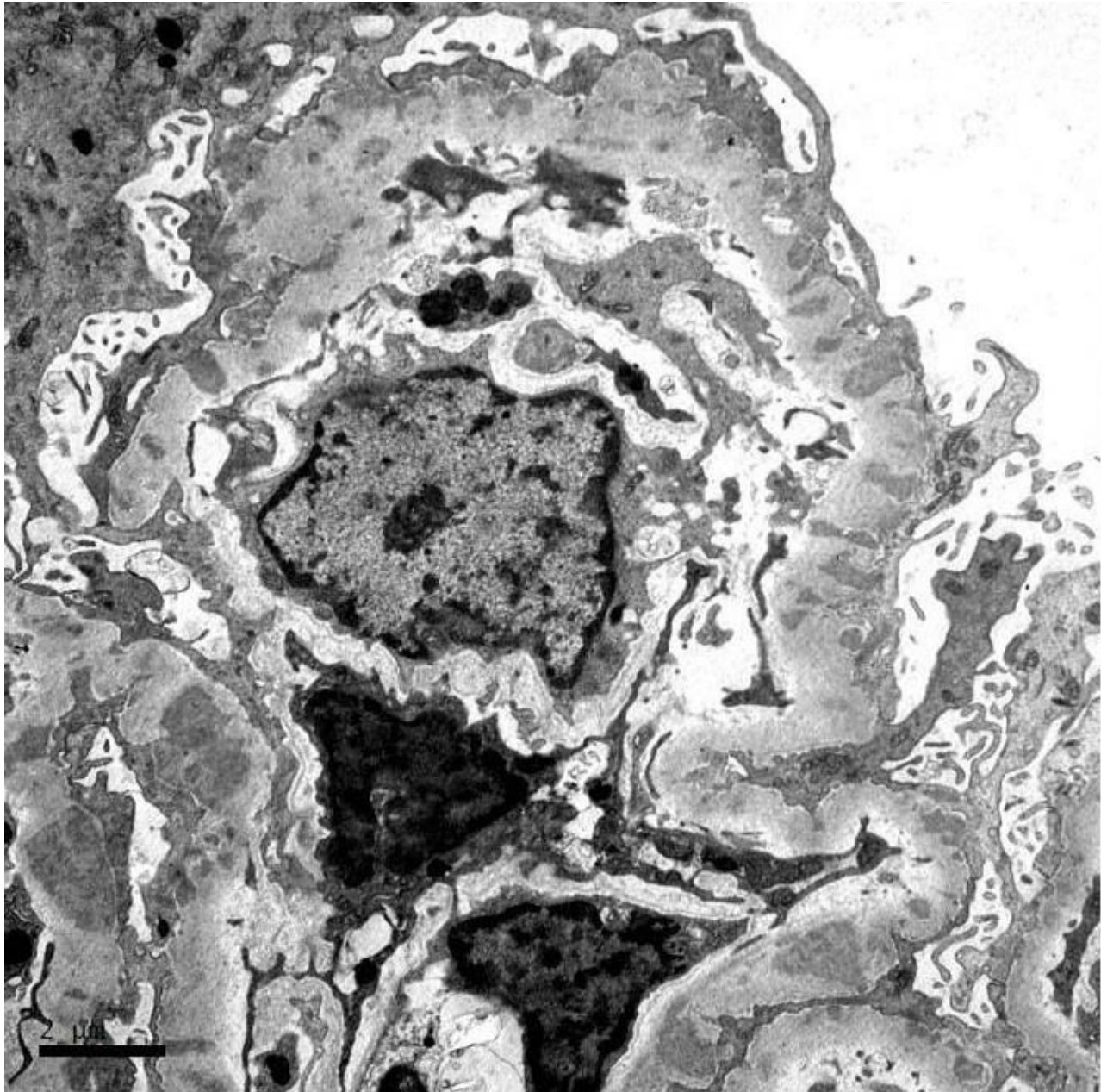
lambda

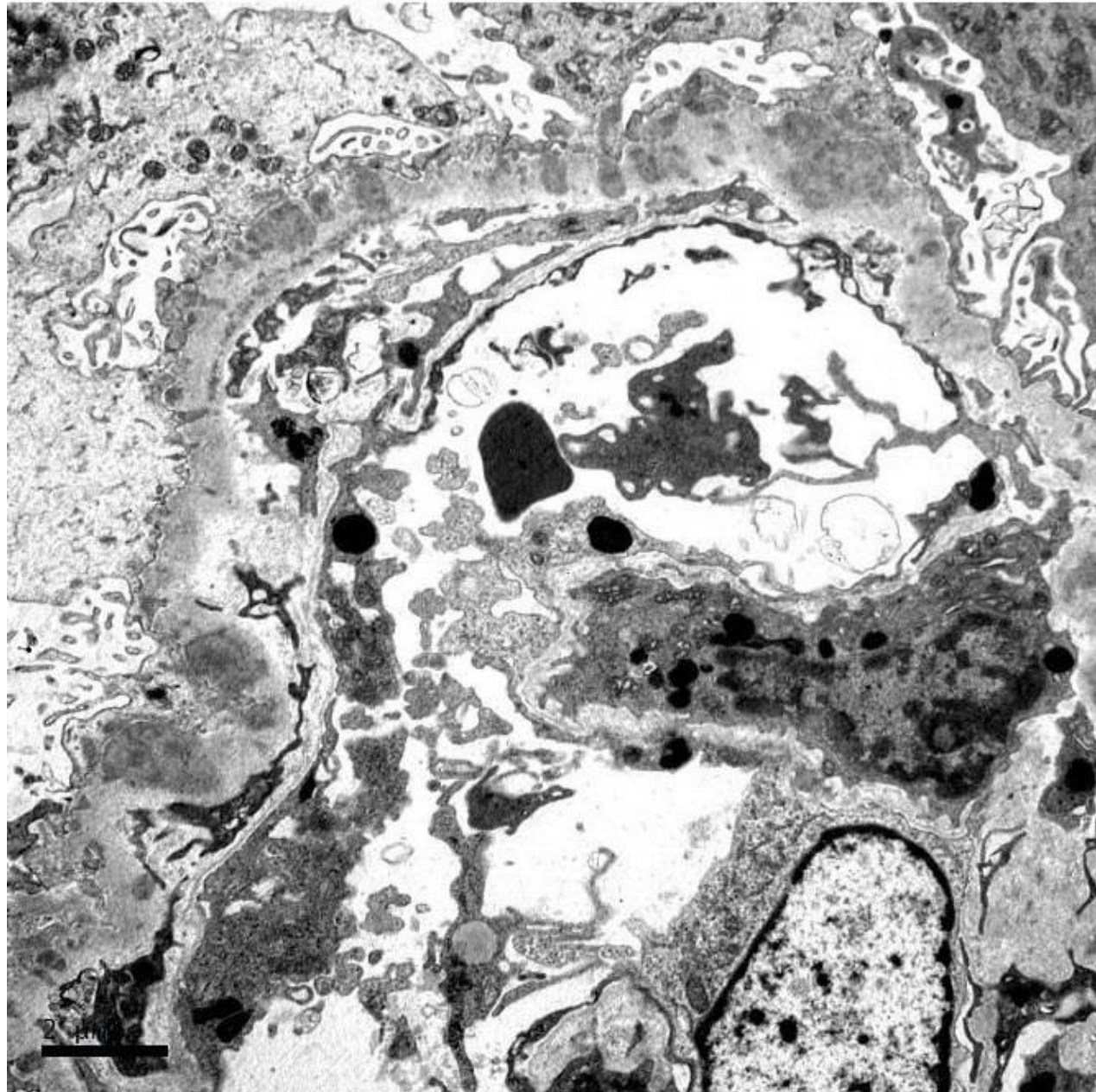














RENAL BIOPSY CLINICOPATHOLOGICAL WORKSHOP 2018



PATHOLOGY



Division of Pathology
Singapore General Hospital



Department of Renal Medicine
Singapore General Hospital



MEDICINE