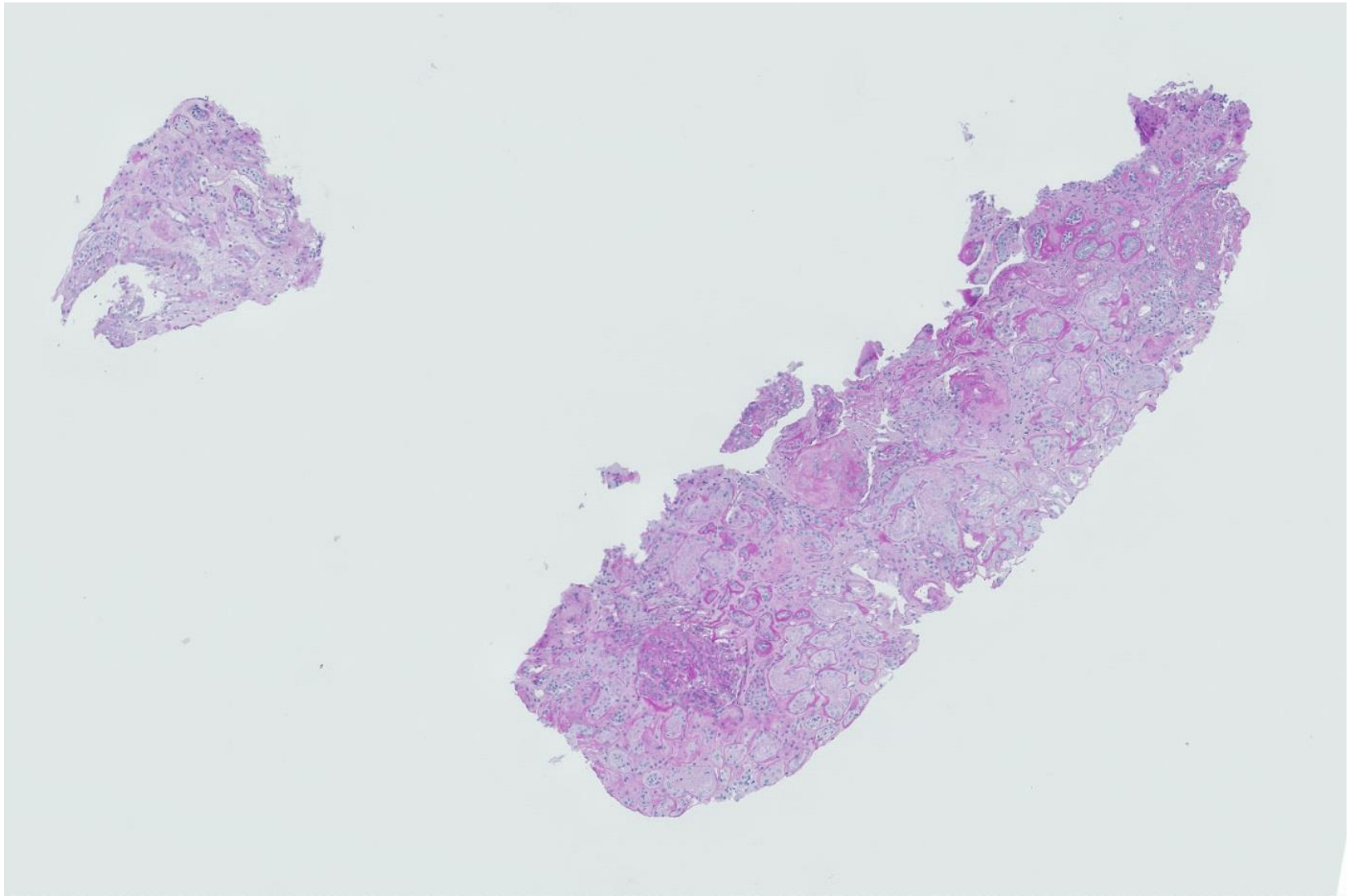
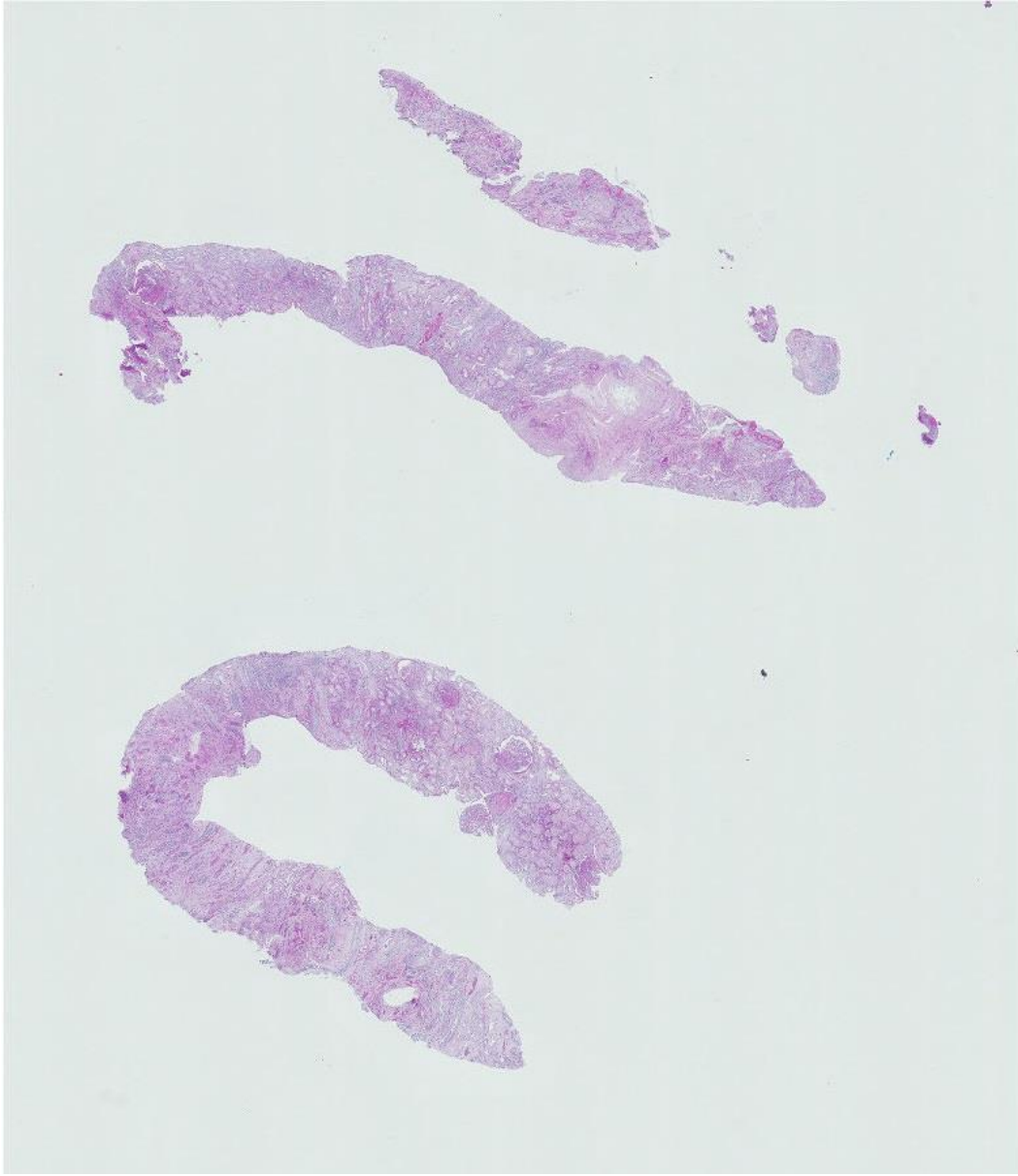
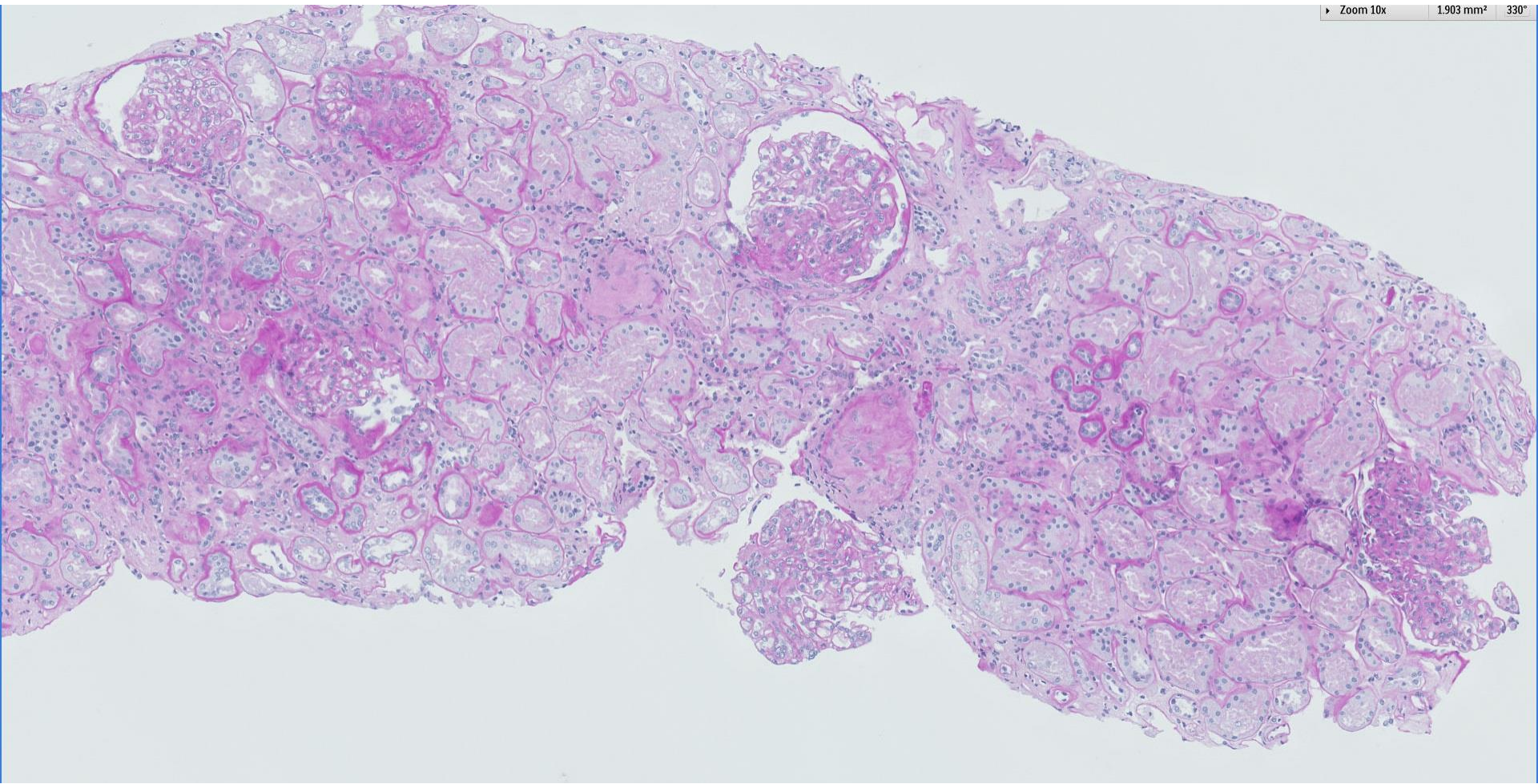


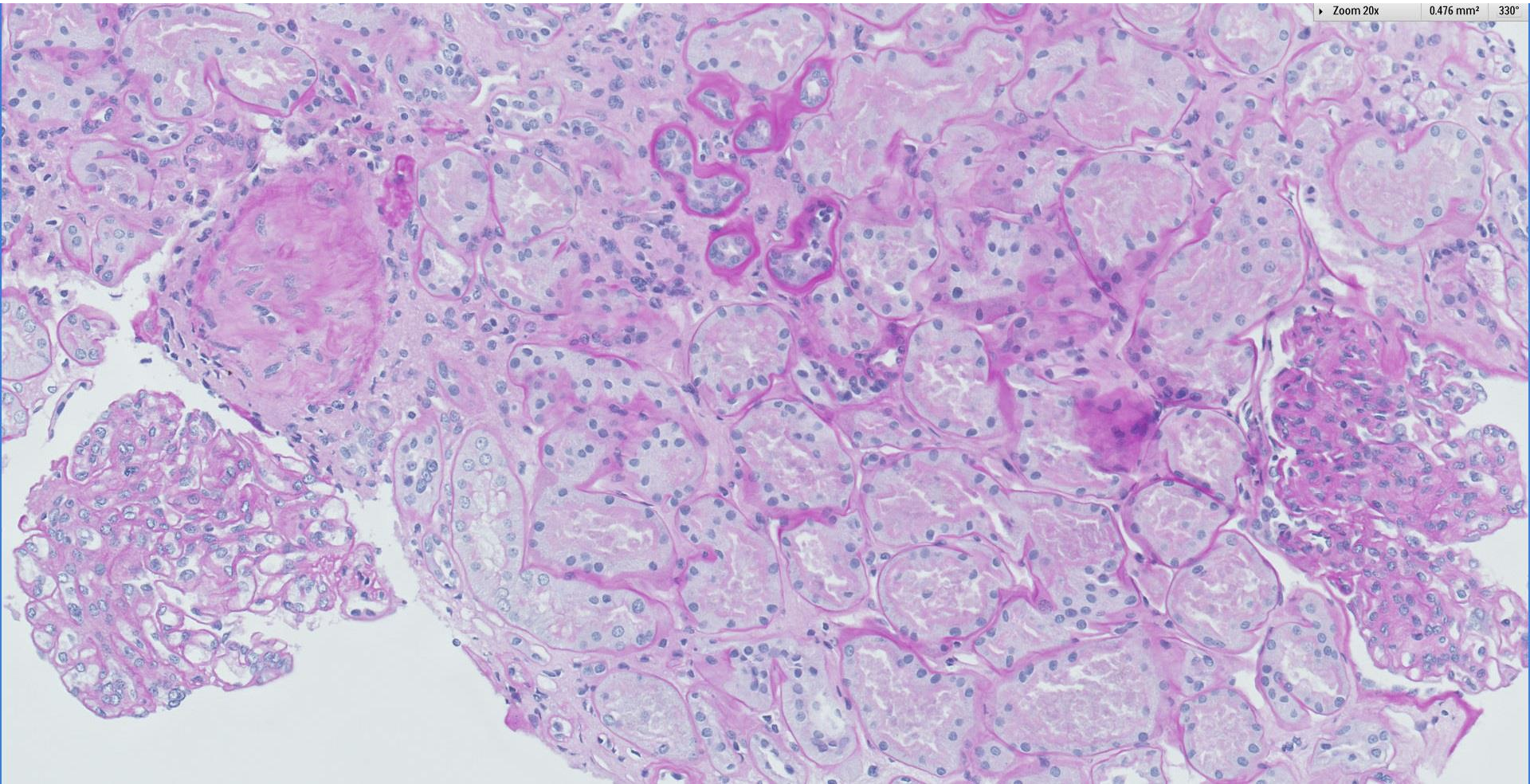
Case 30

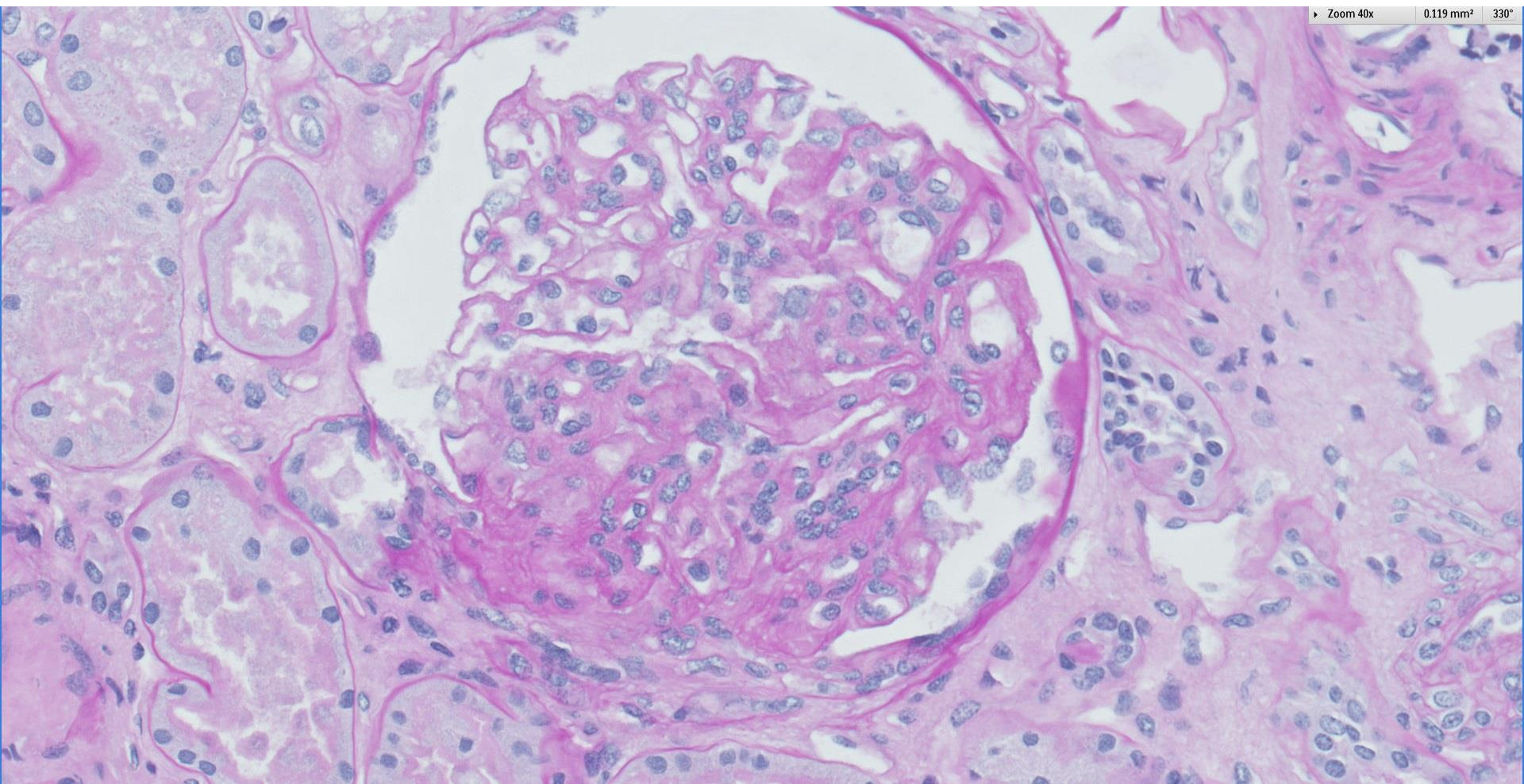
41 year old male with SLE, Evans syndrome and previous splenectomy now presents with the nephrotic syndrome.

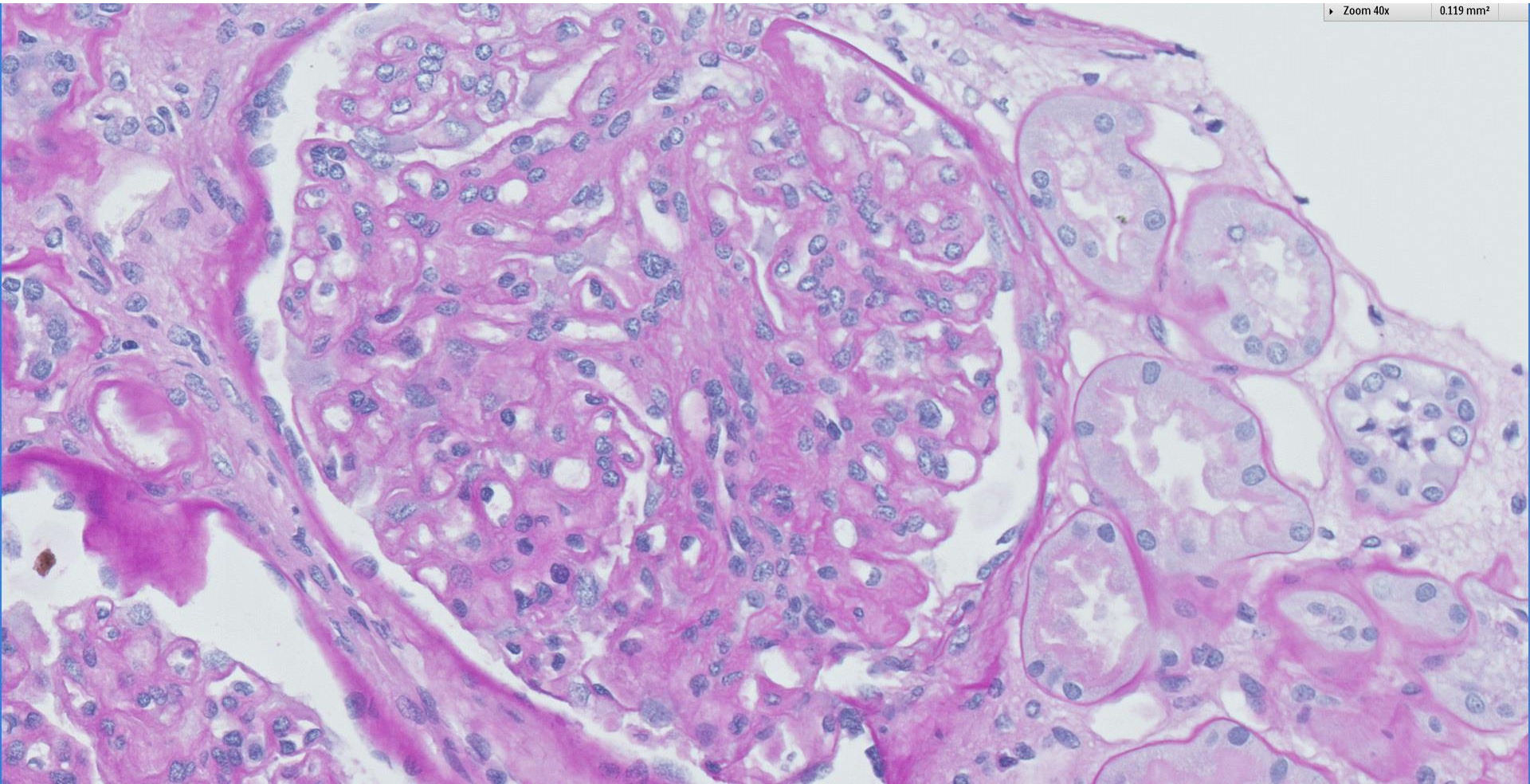


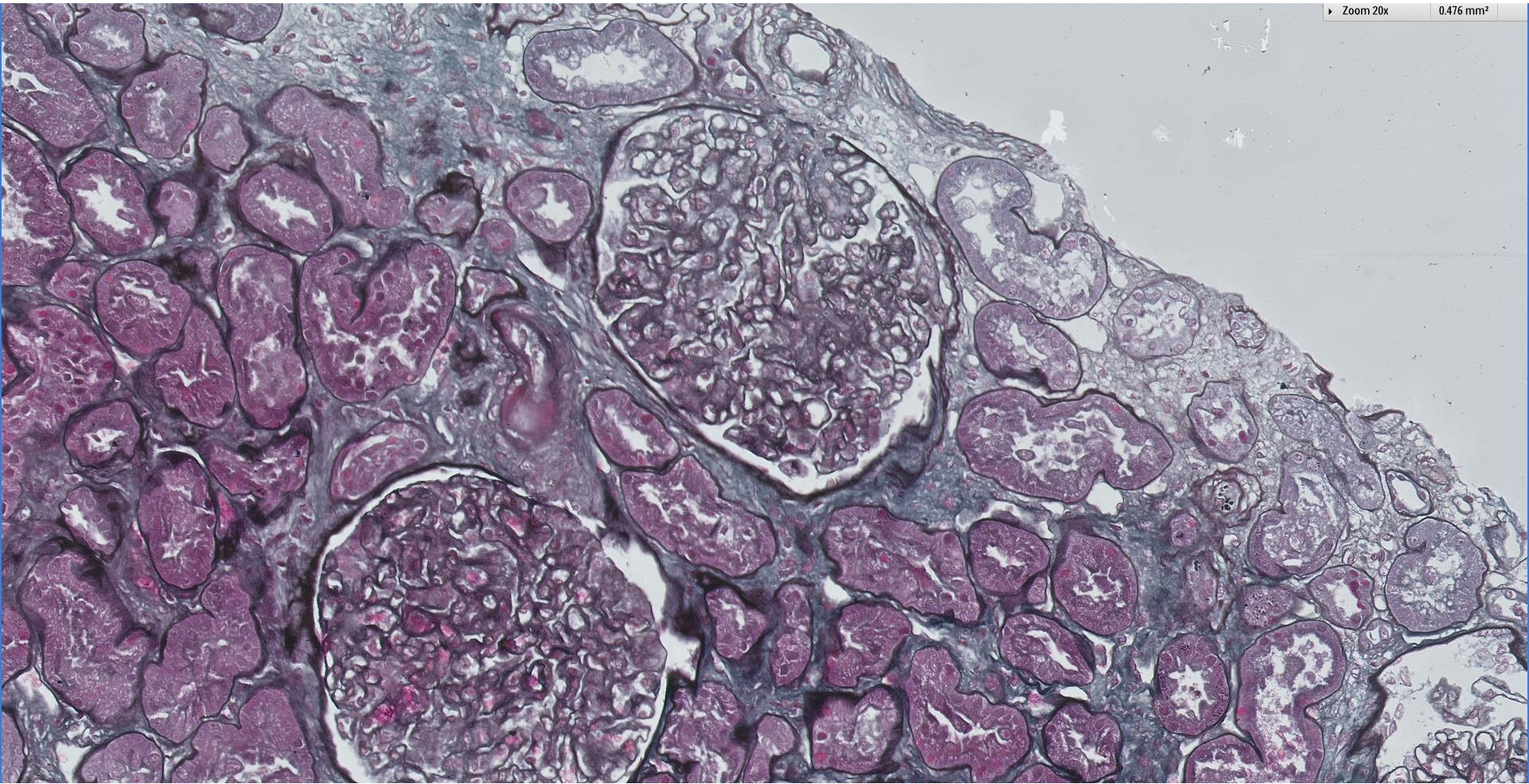




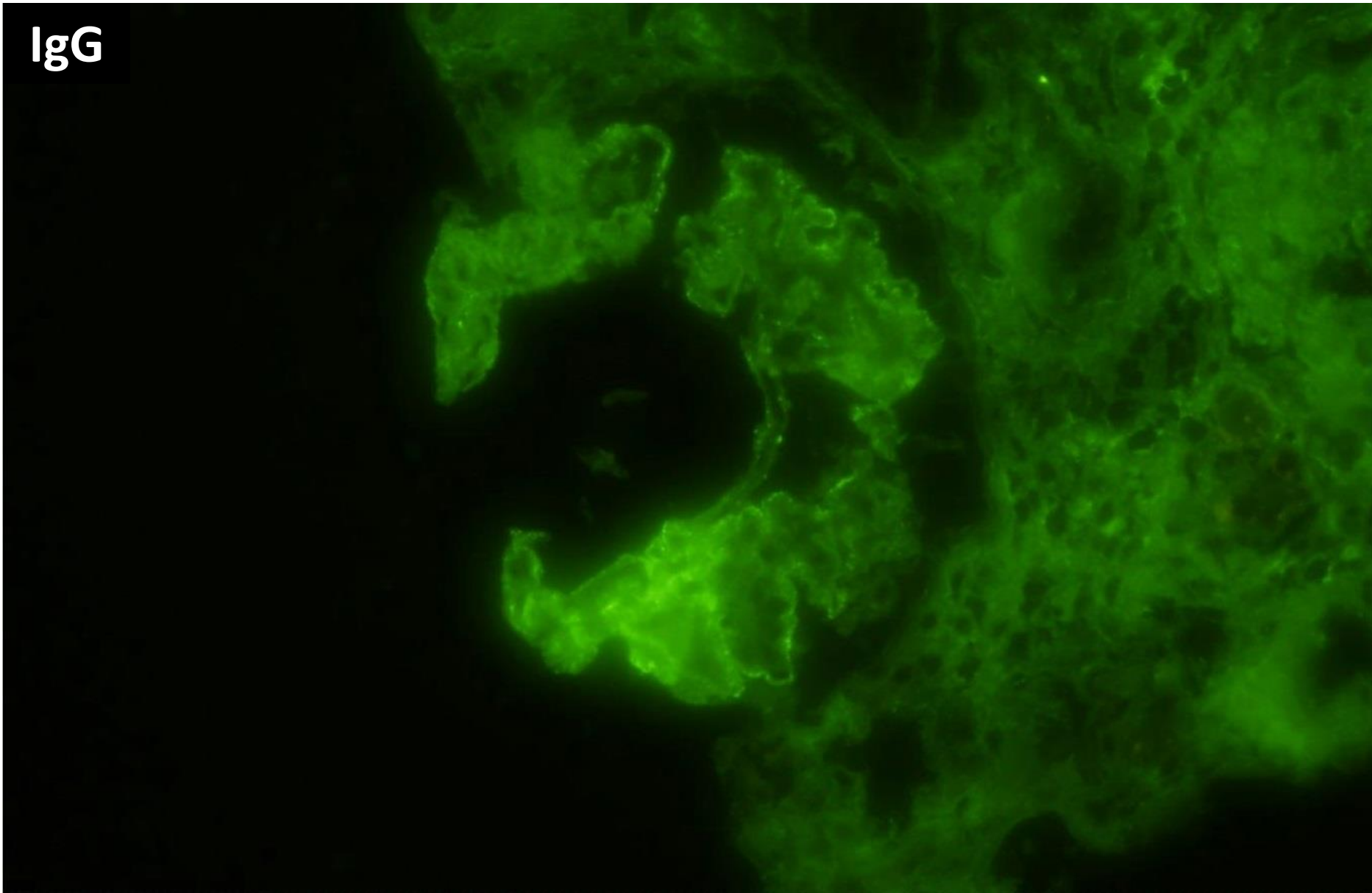




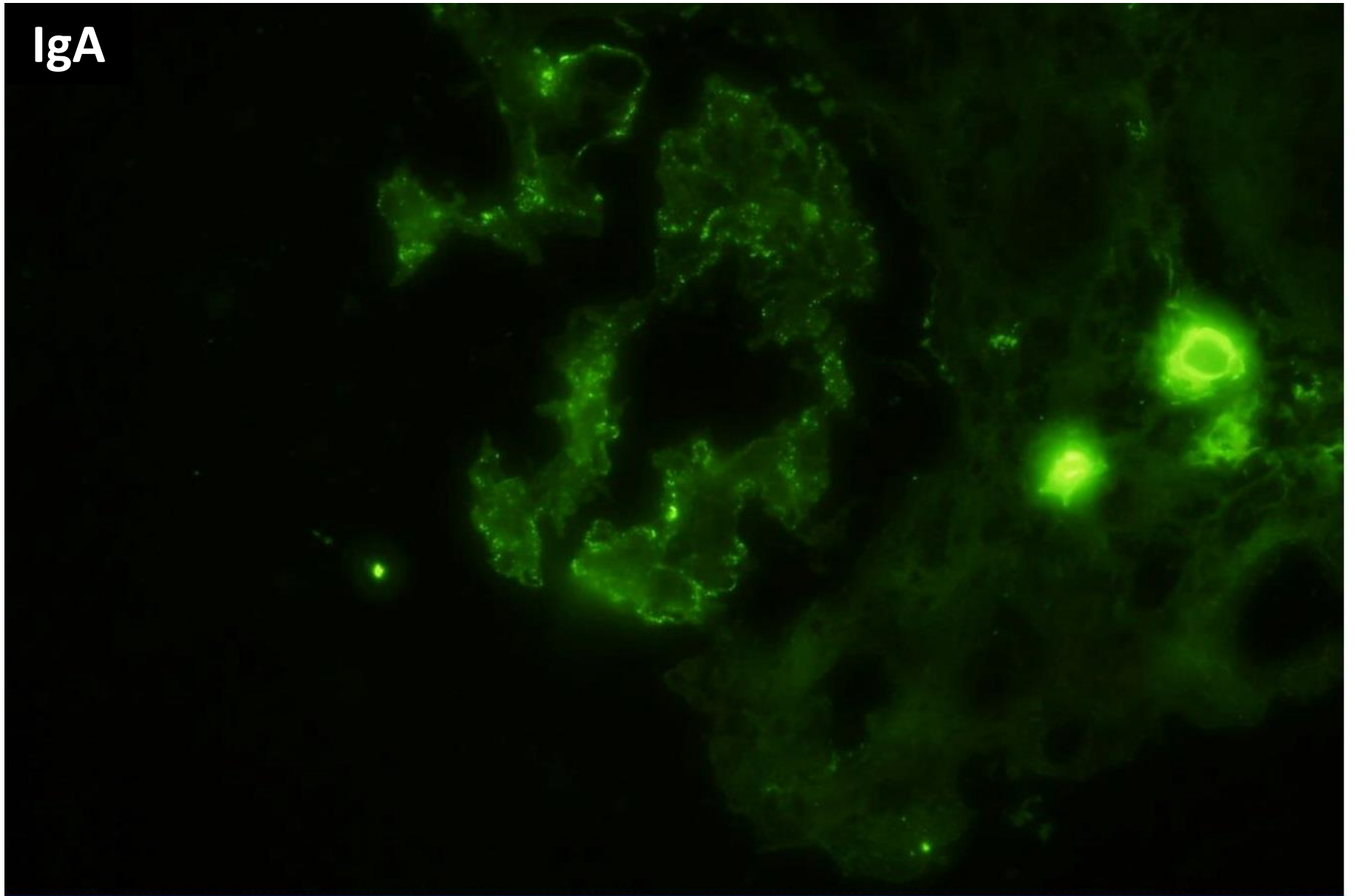




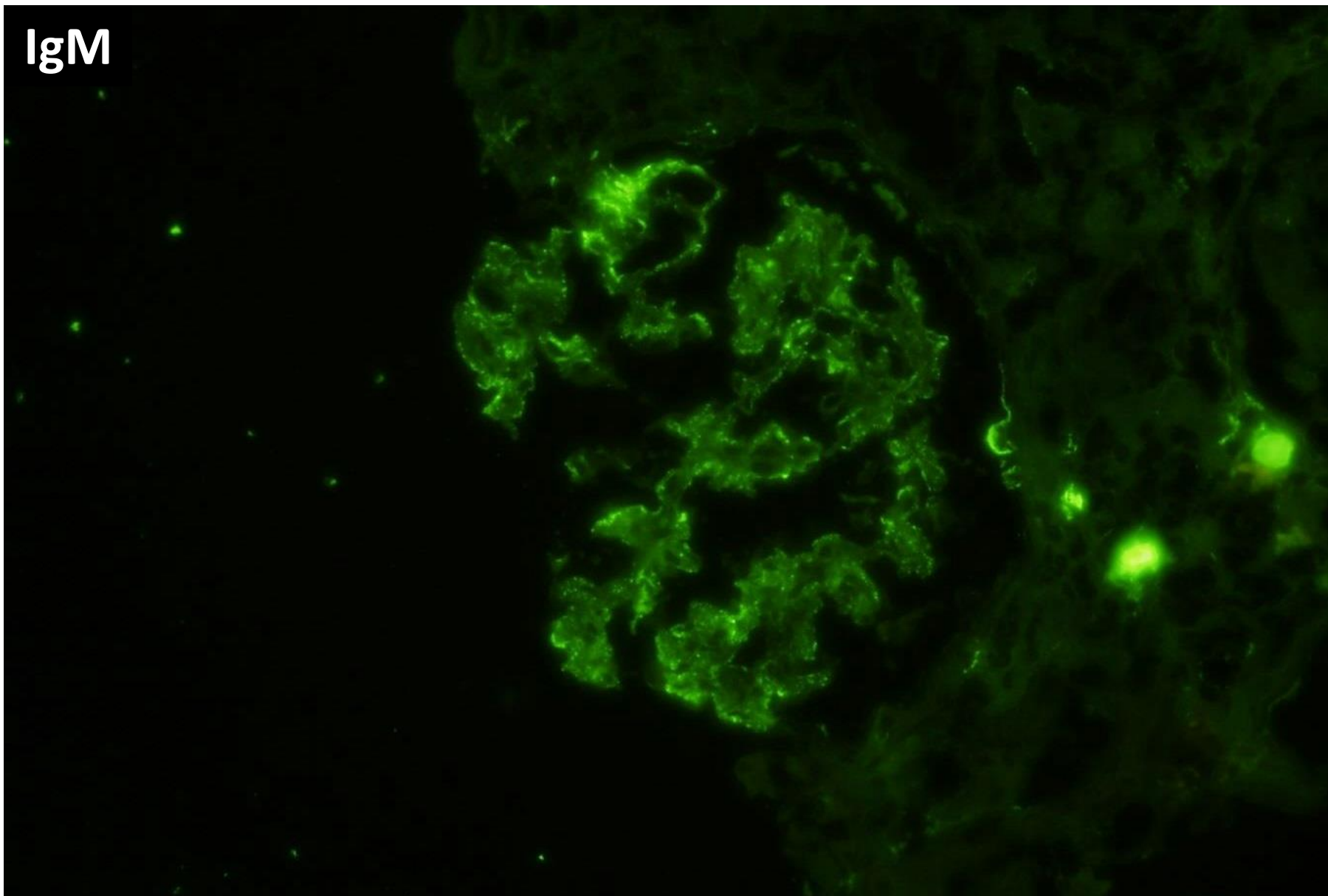
IgG



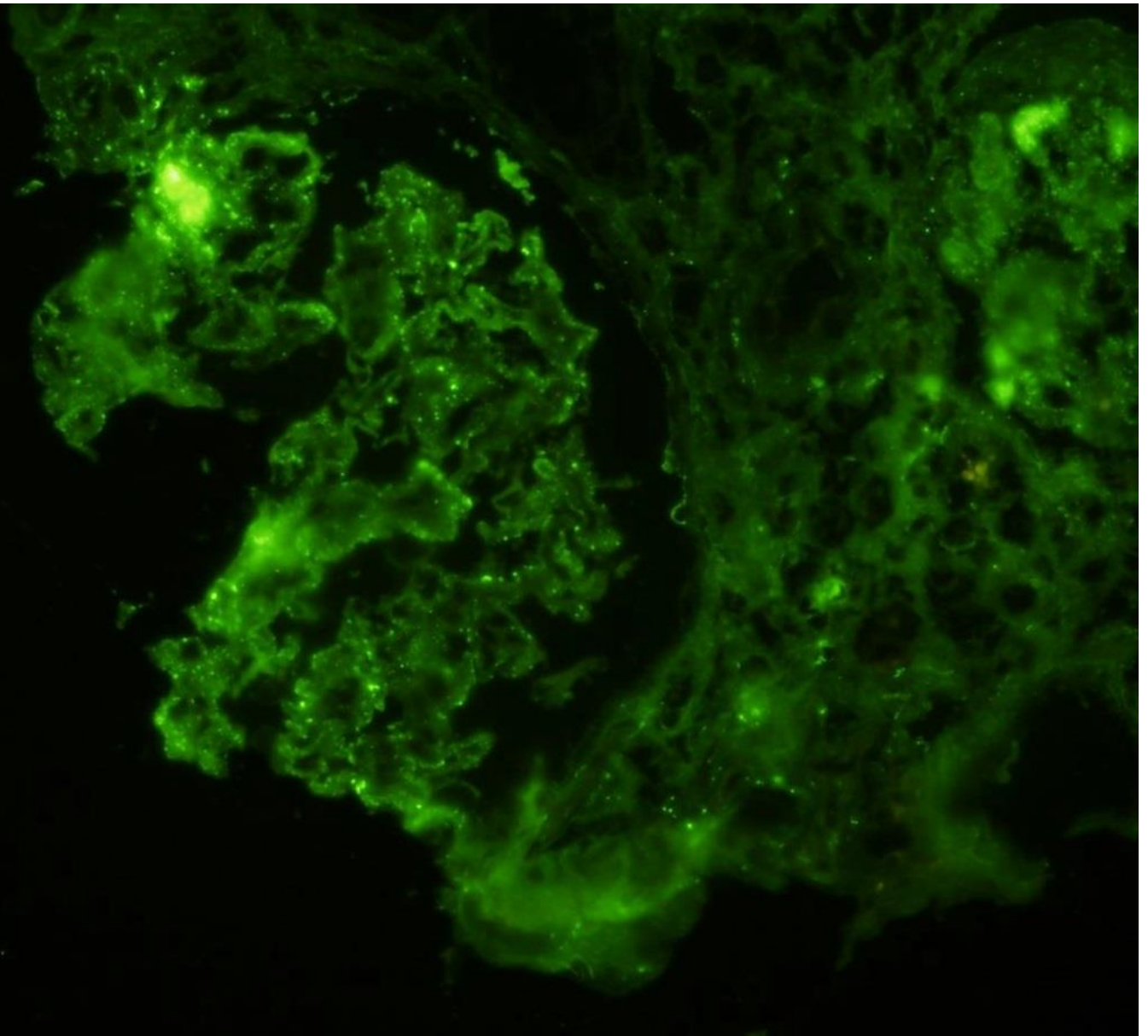
IgA



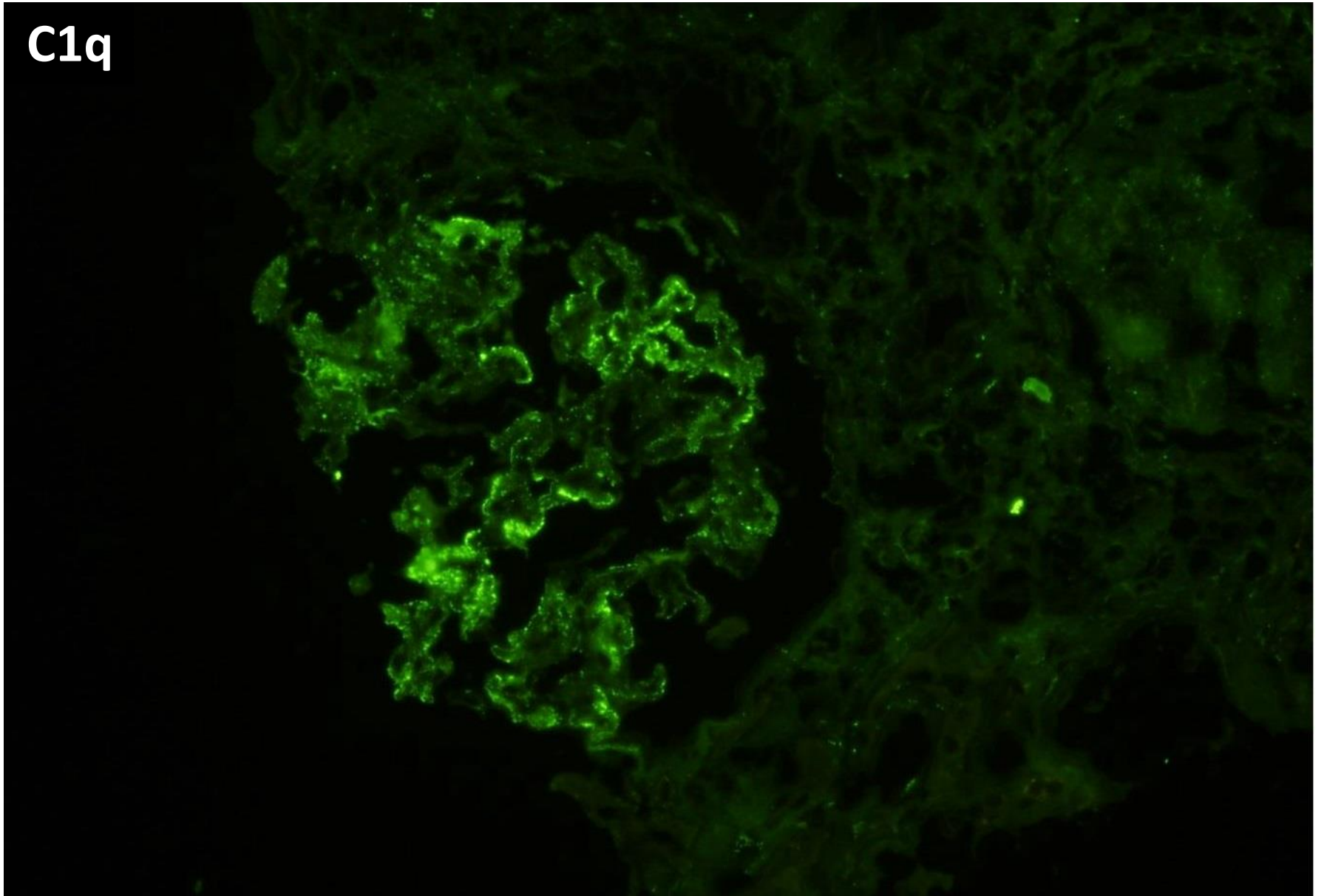
IgM



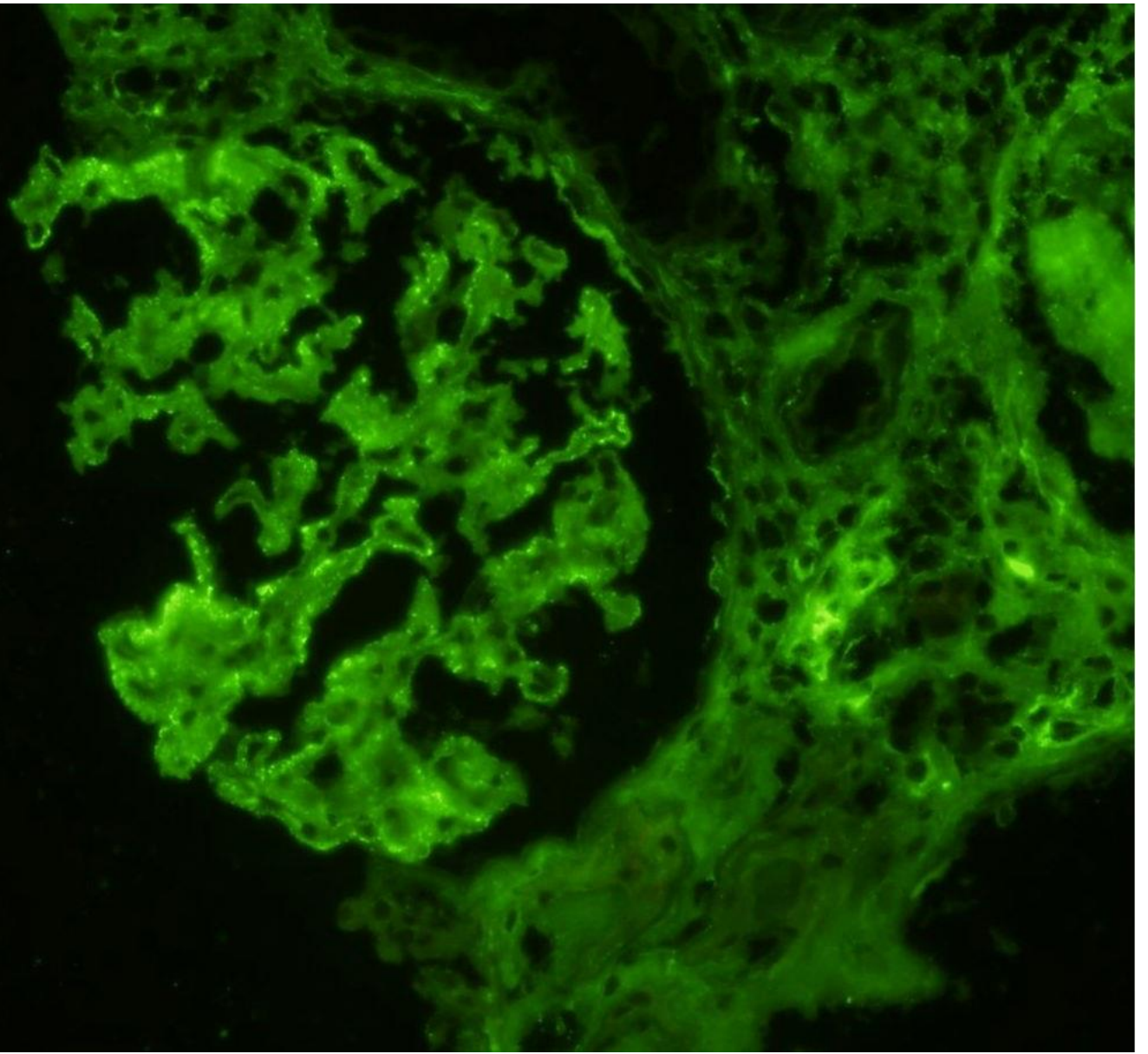
C3



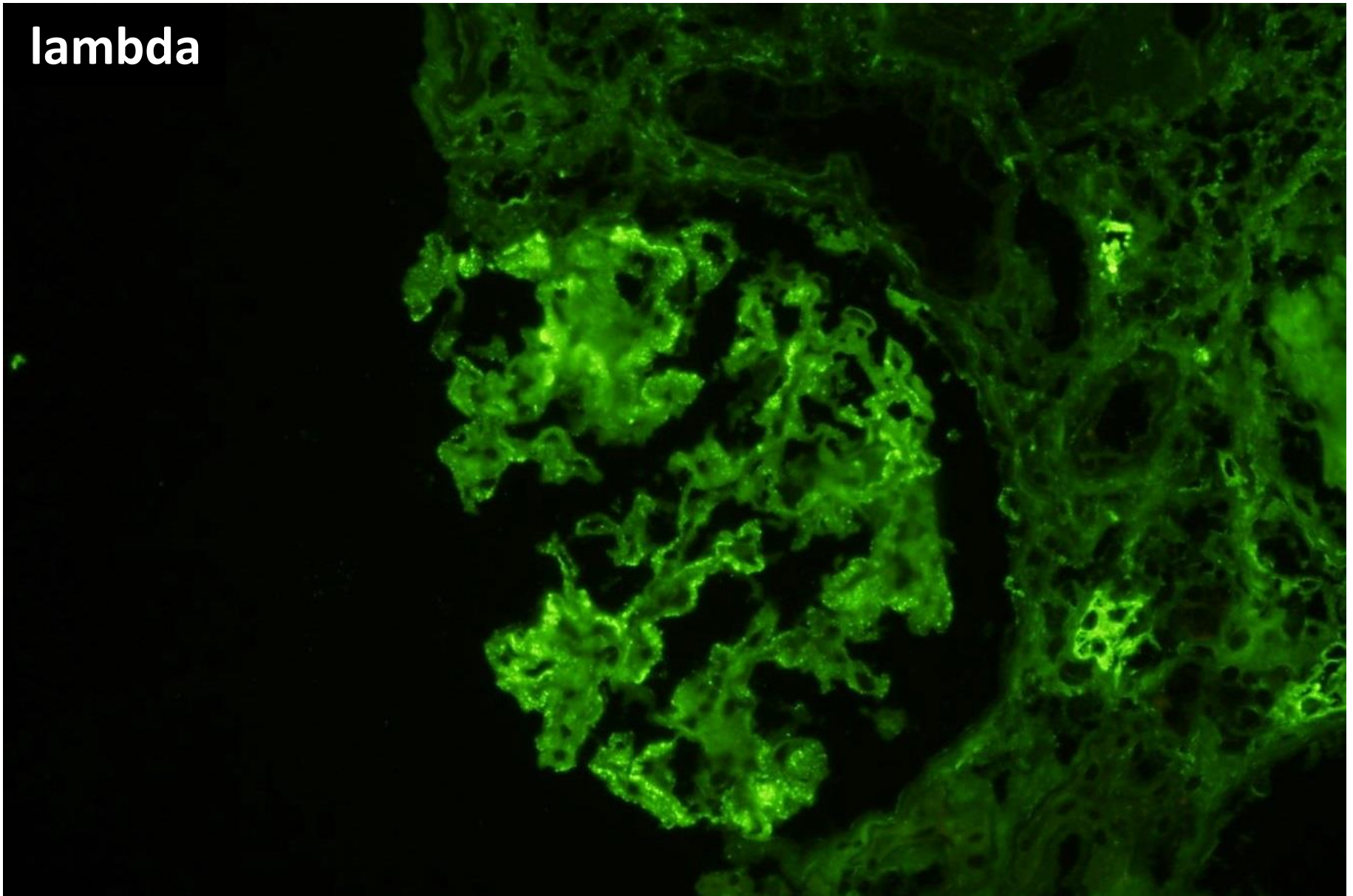
C1q

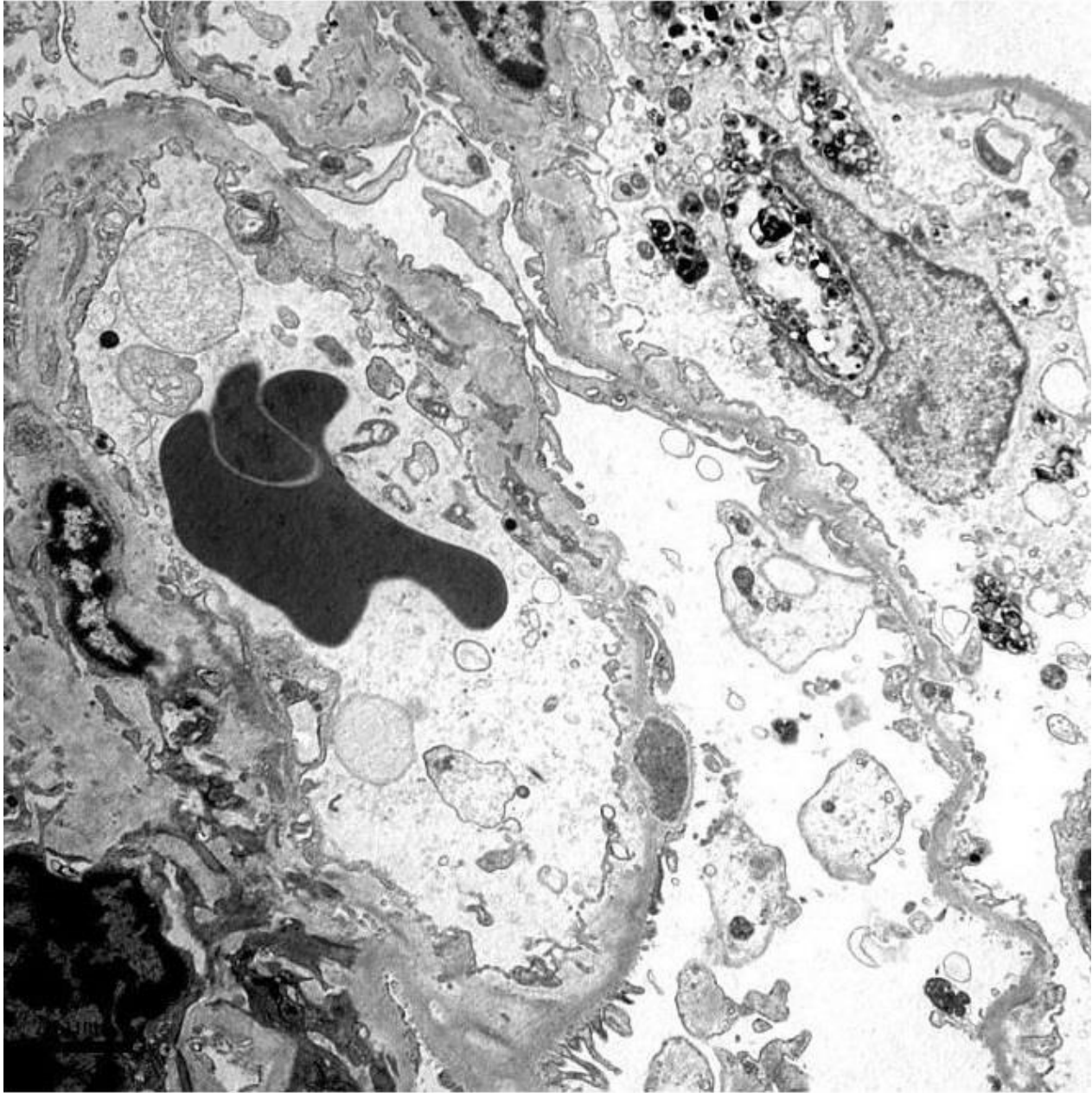


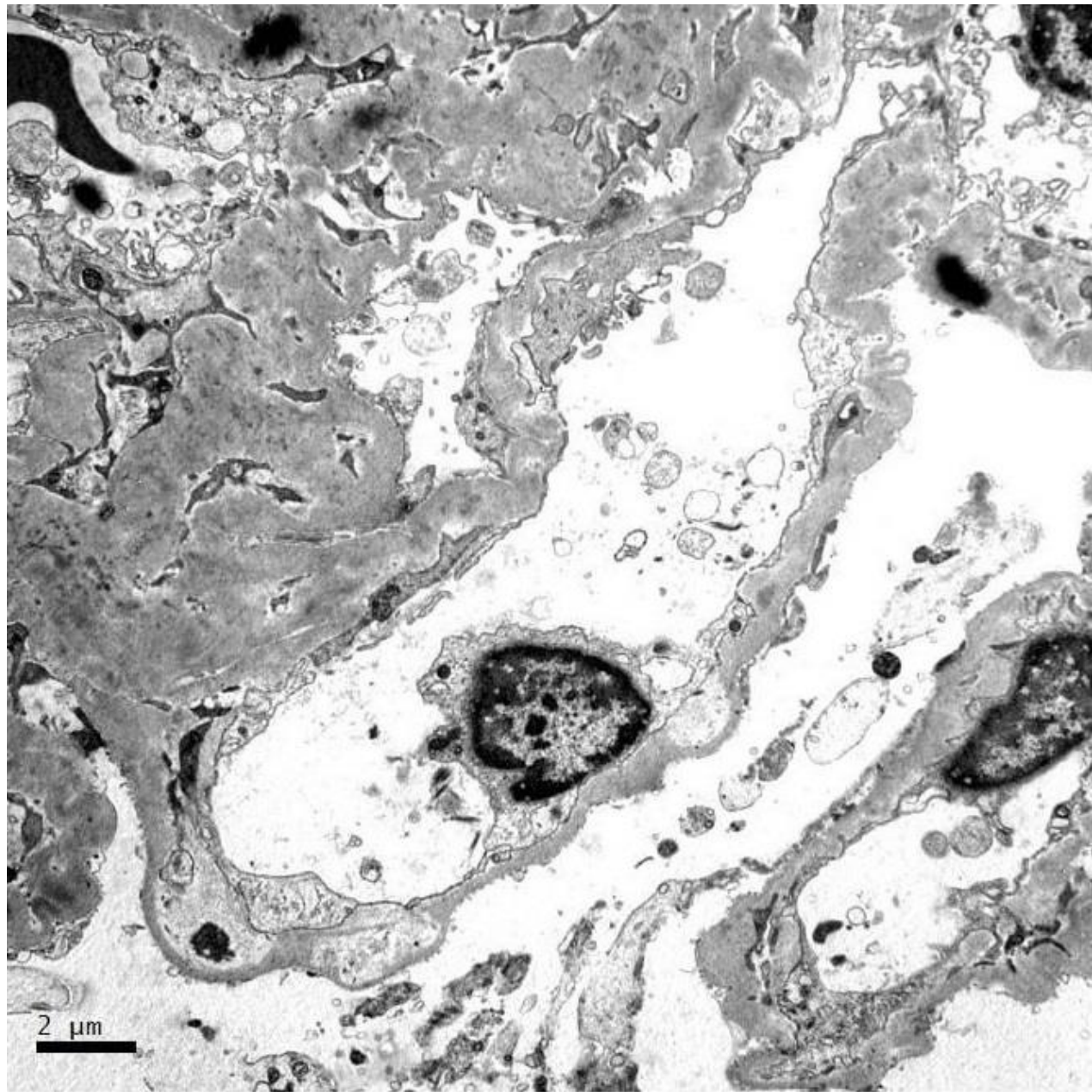
kappa

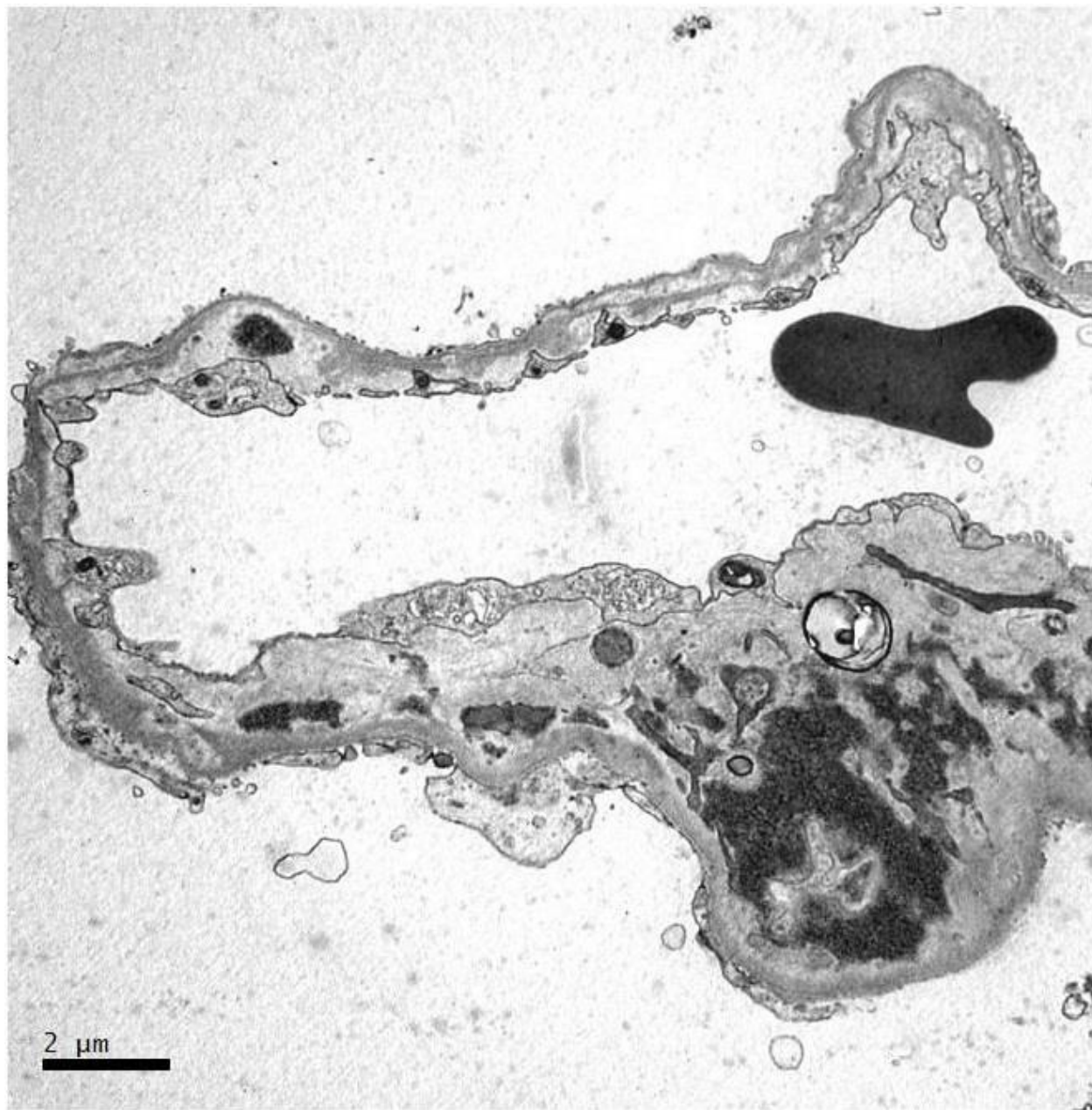


lambda

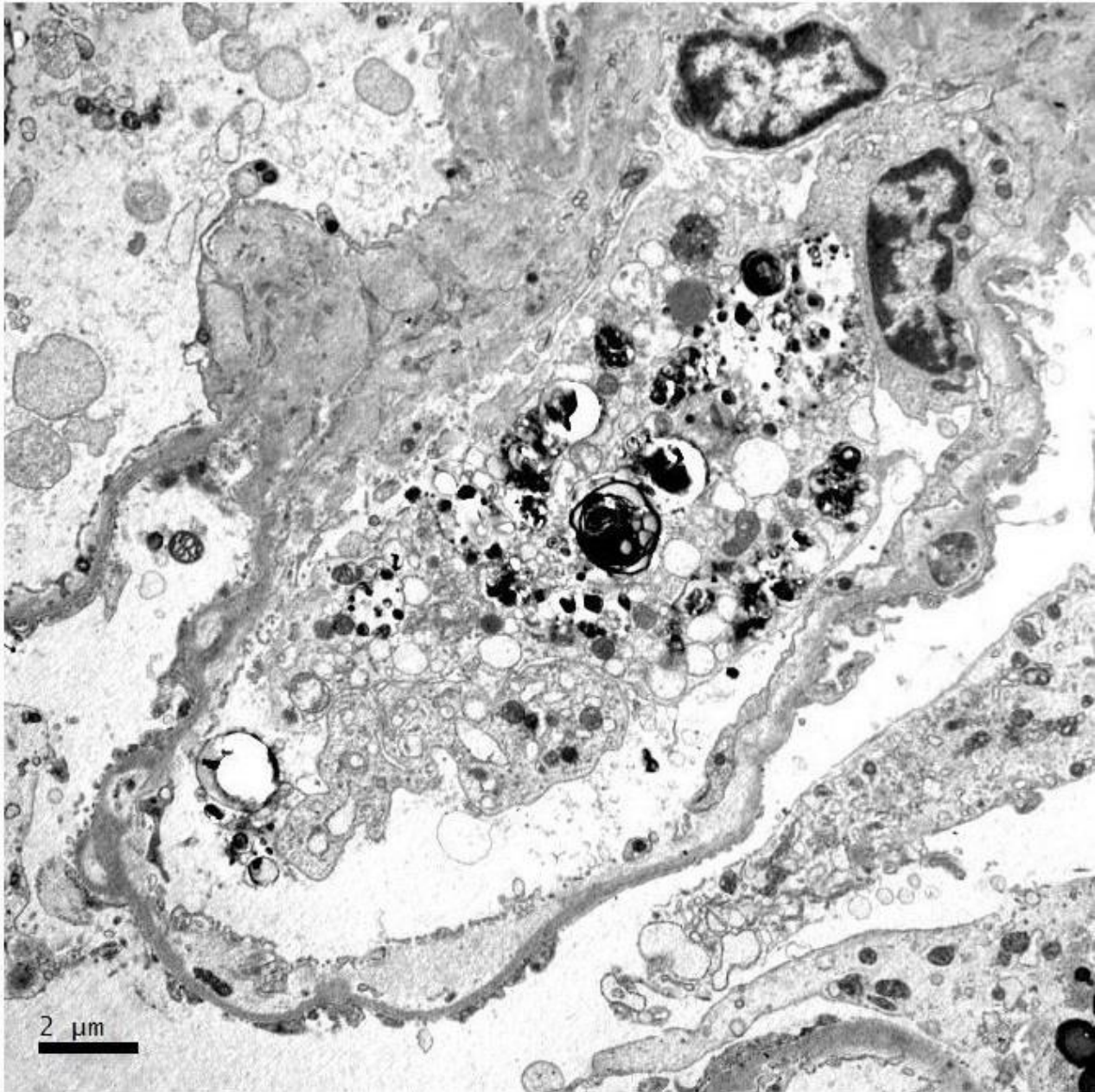














RENAL BIOPSY CLINICOPATHOLOGICAL WORKSHOP 2018



PATHOLOGY



Division of Pathology
Singapore General Hospital



Department of Renal Medicine
Singapore General Hospital



MEDICINE