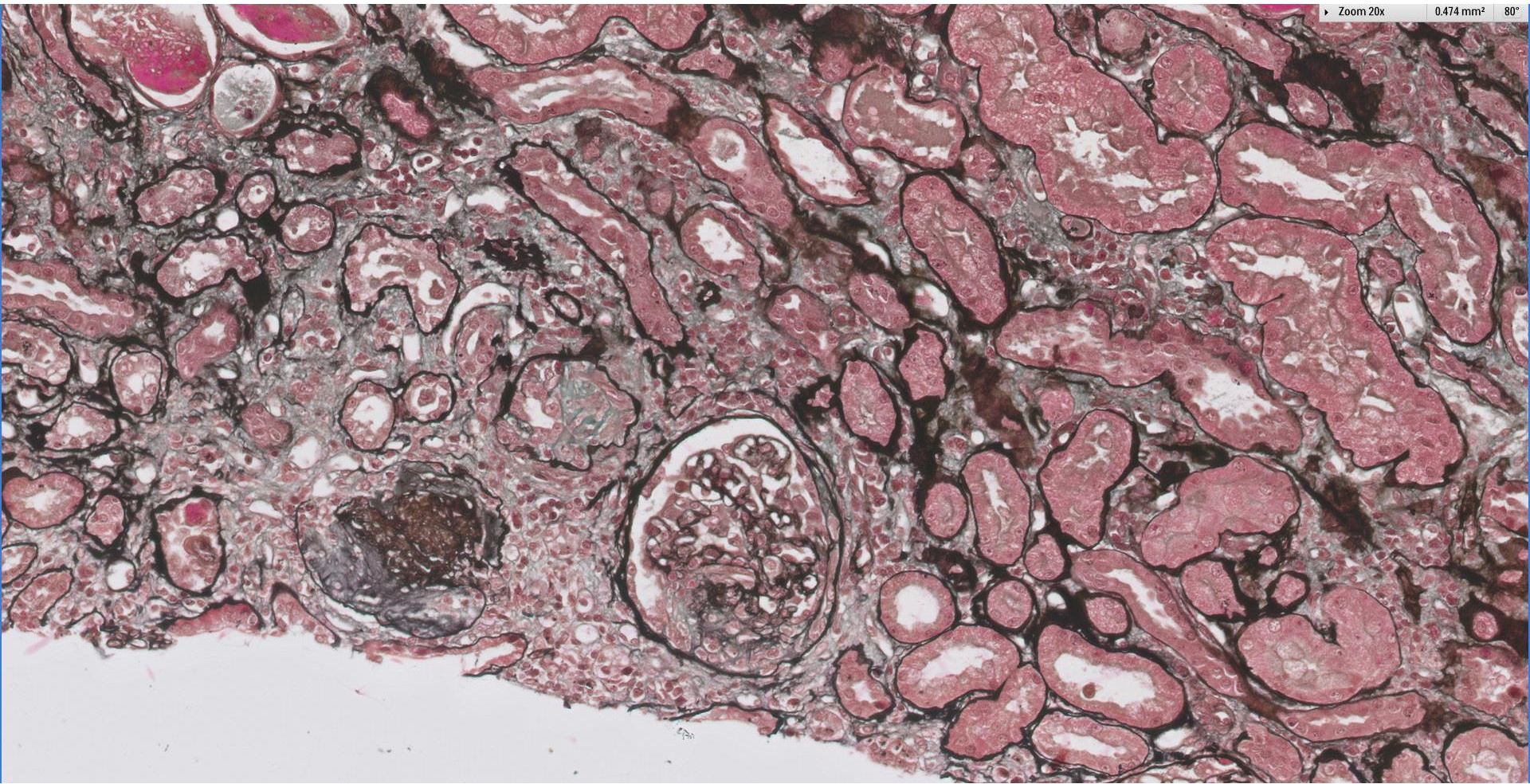
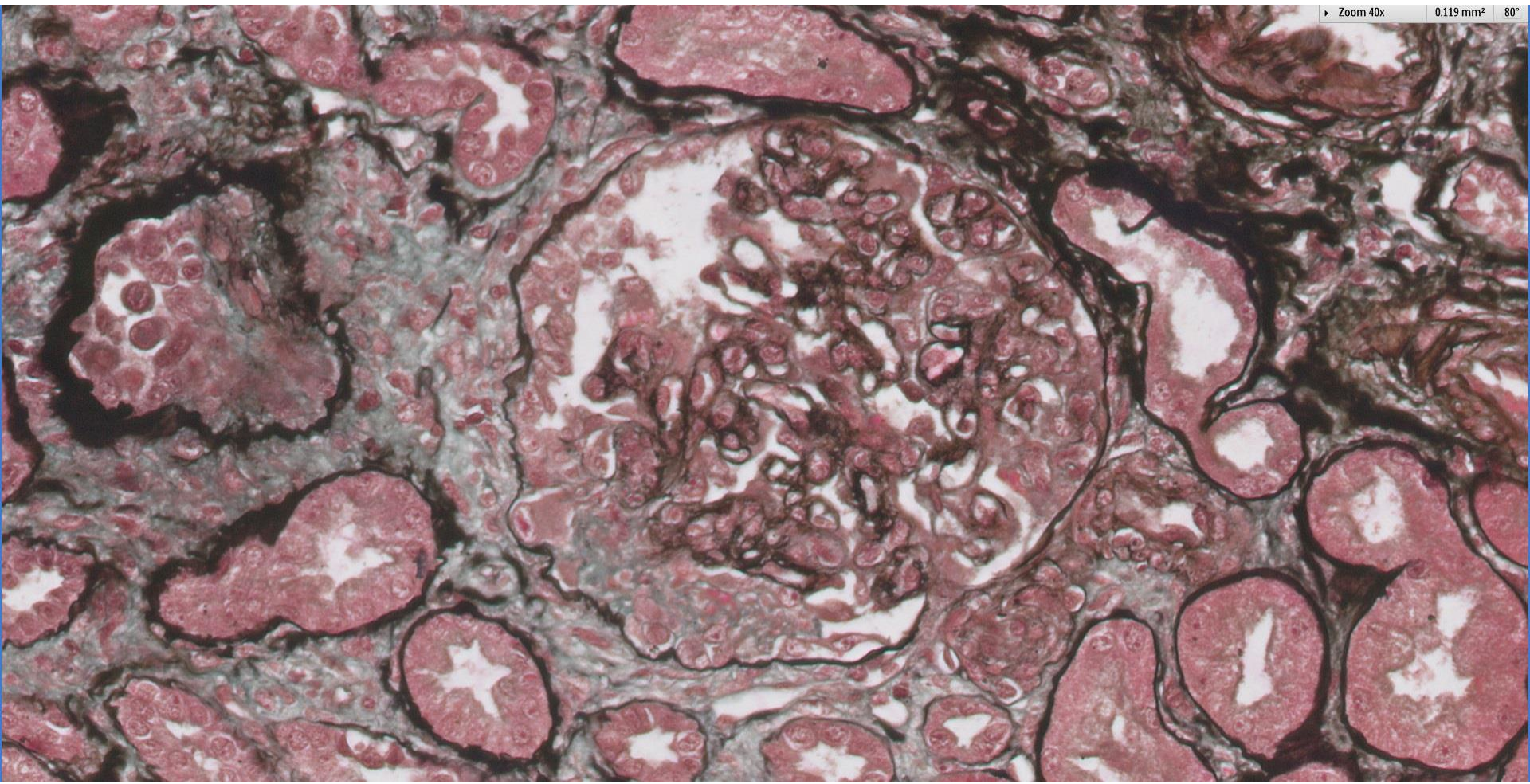


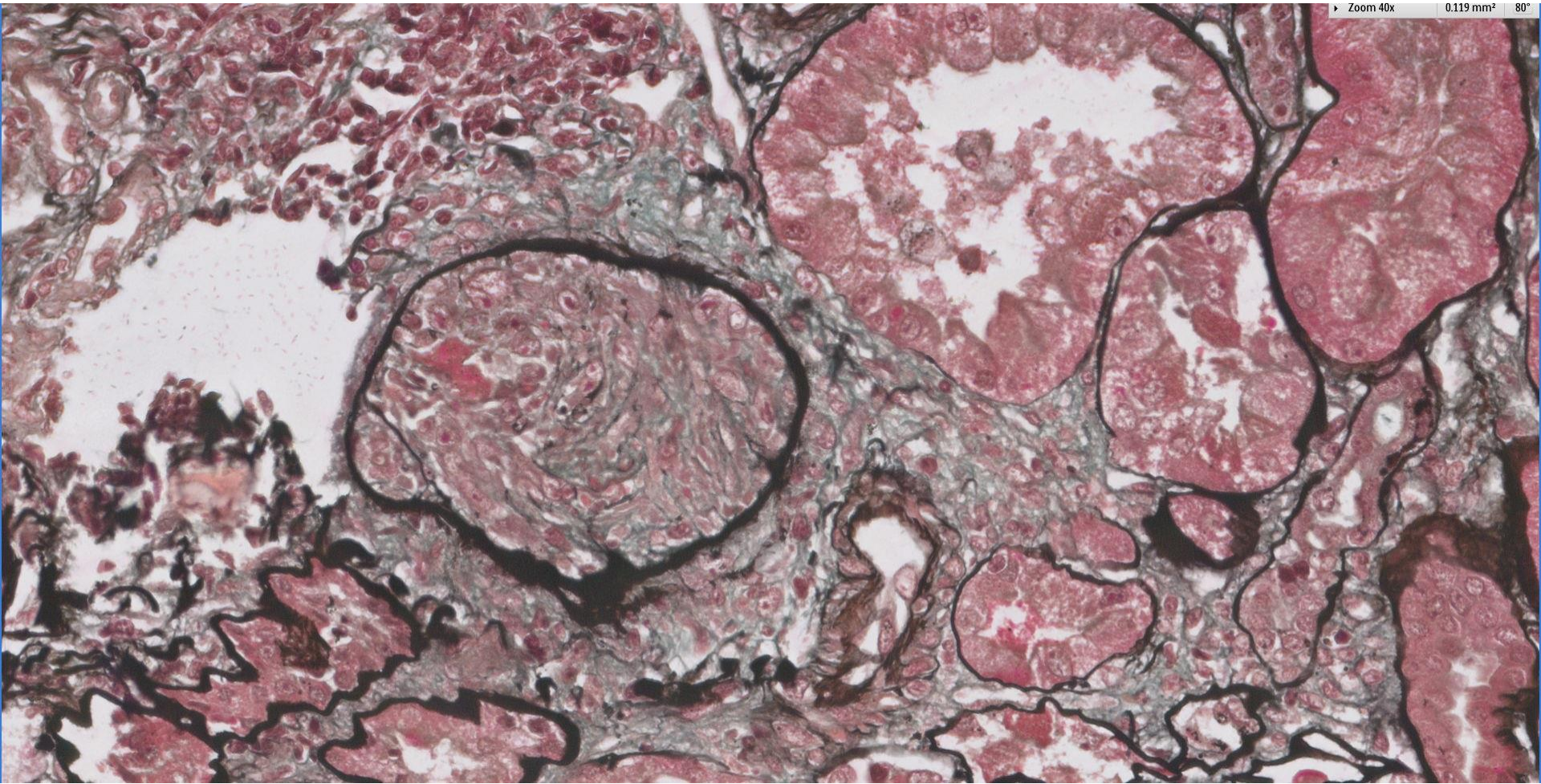
Case 29

60 year old male with ischaemic heart disease and hepatitis B liver cirrhosis now presents with nephrotic syndrome.









Immunofluorescence and electron microscopy studies were not available.



RENAL BIOPSY CLINICOPATHOLOGICAL WORKSHOP 2018



PATHOLOGY



Division of Pathology
Singapore General Hospital



Department of Renal Medicine
Singapore General Hospital



MEDICINE