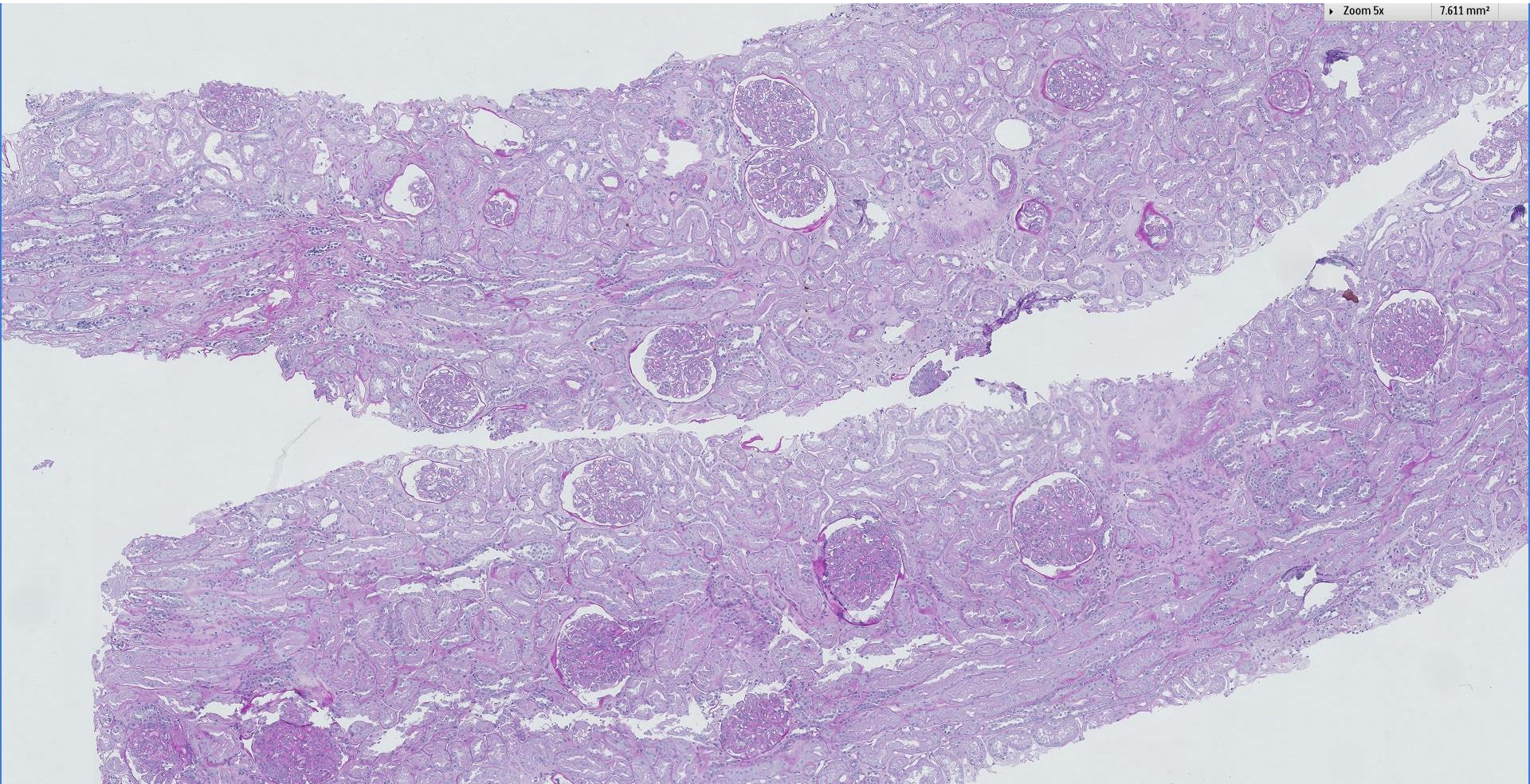


Case 26

58 year old female with history of bilateral posterior scleritis
admitted for nephritic syndrome.

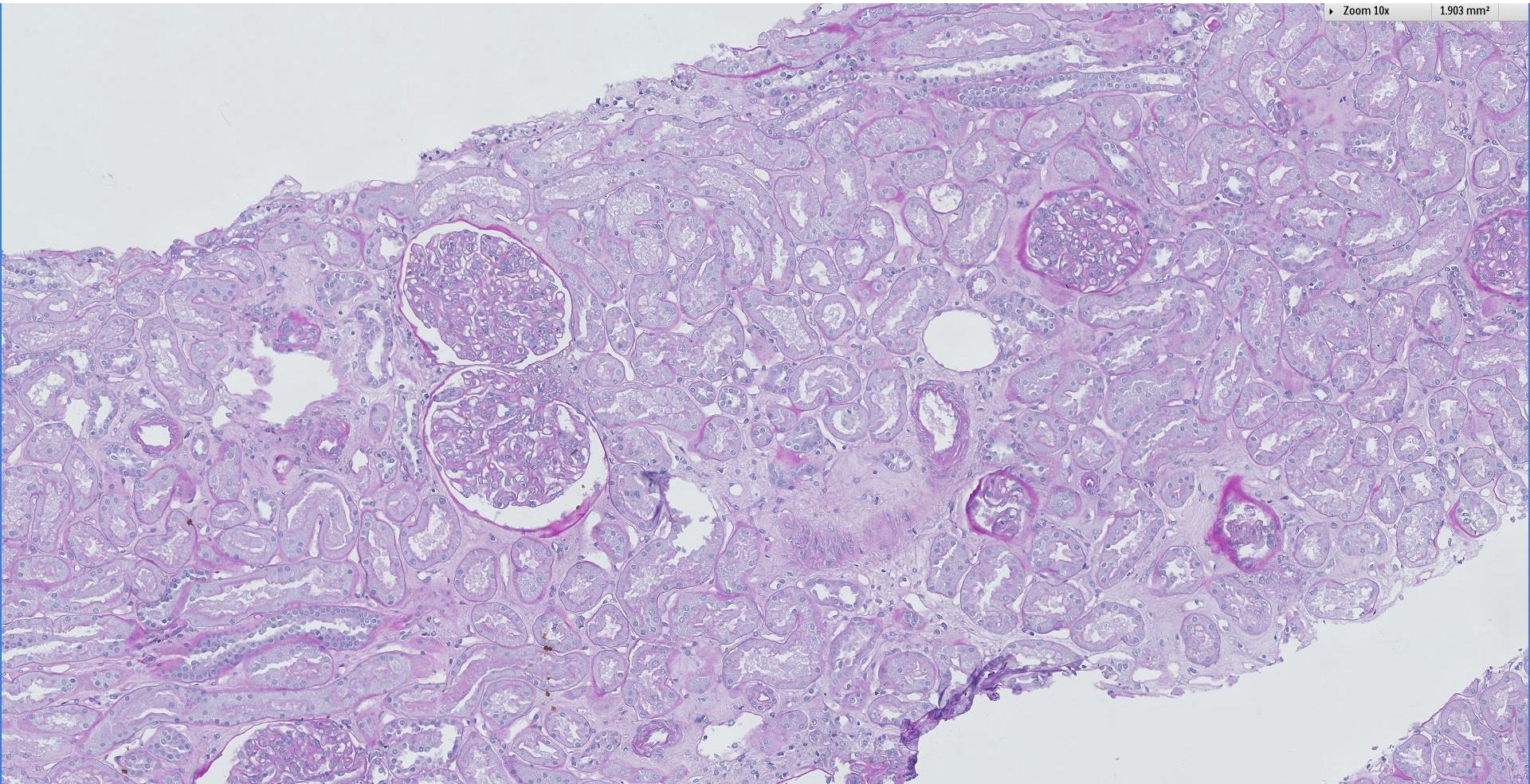
Zoom 5x

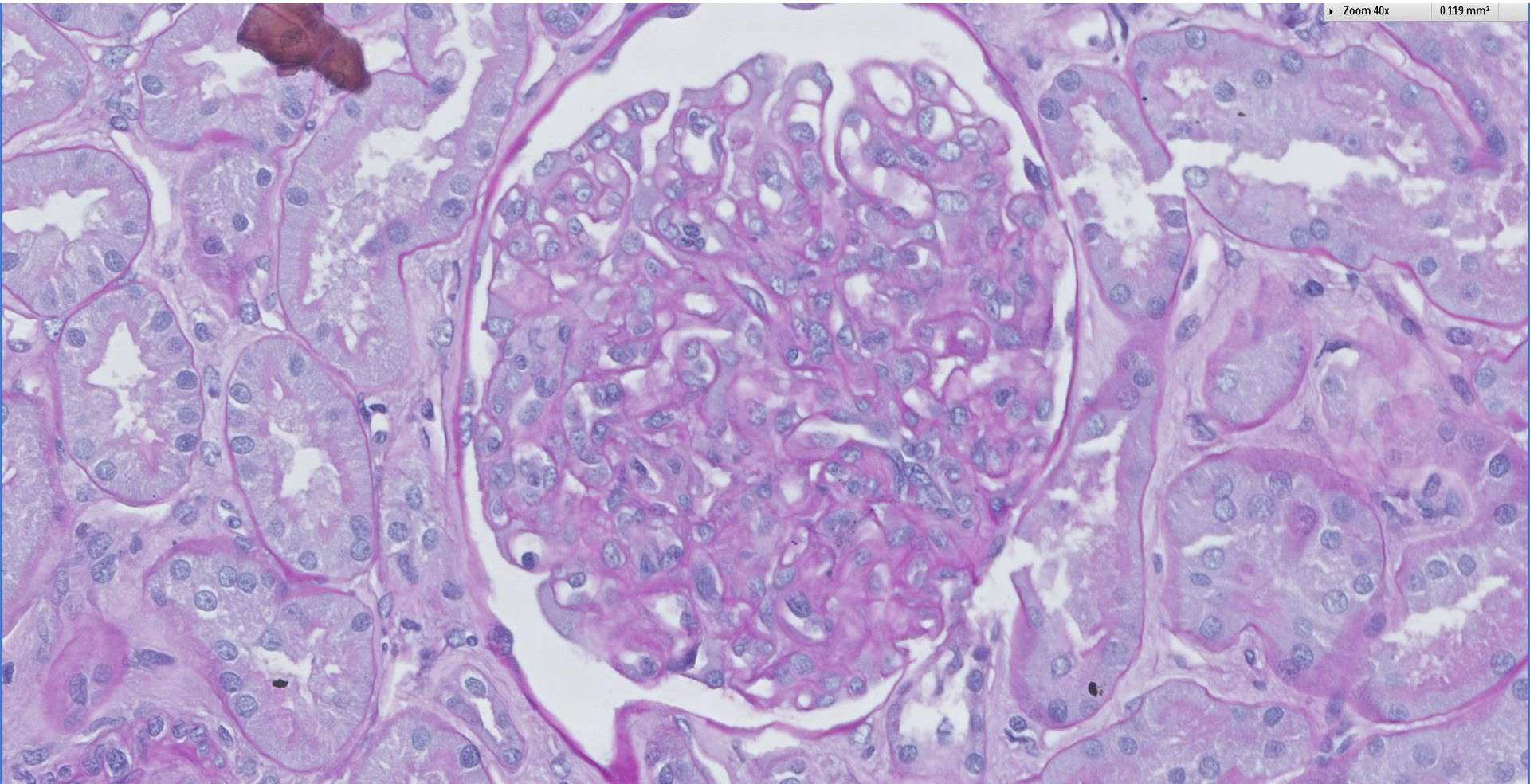
7.611 mm²

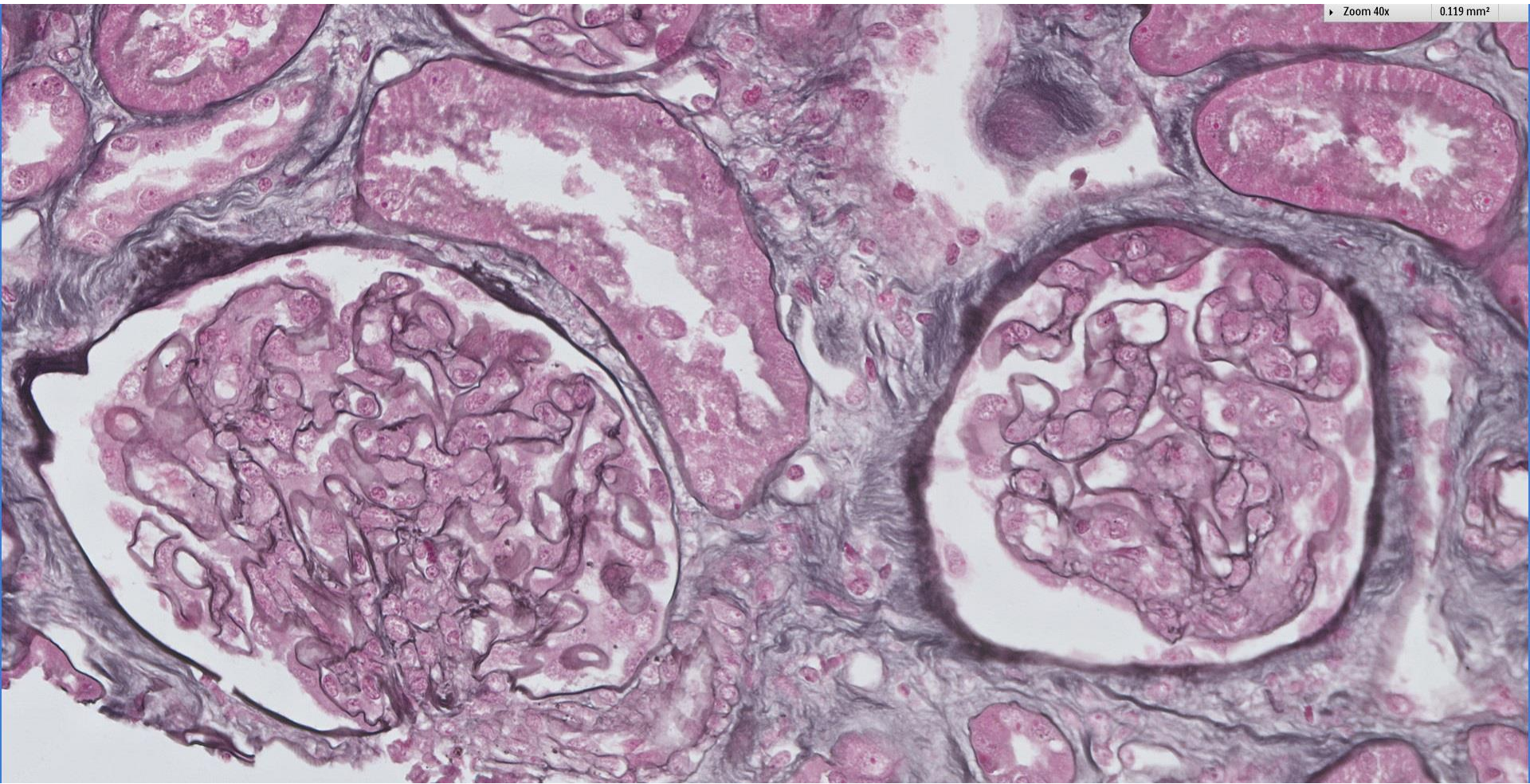


Zoom 10x

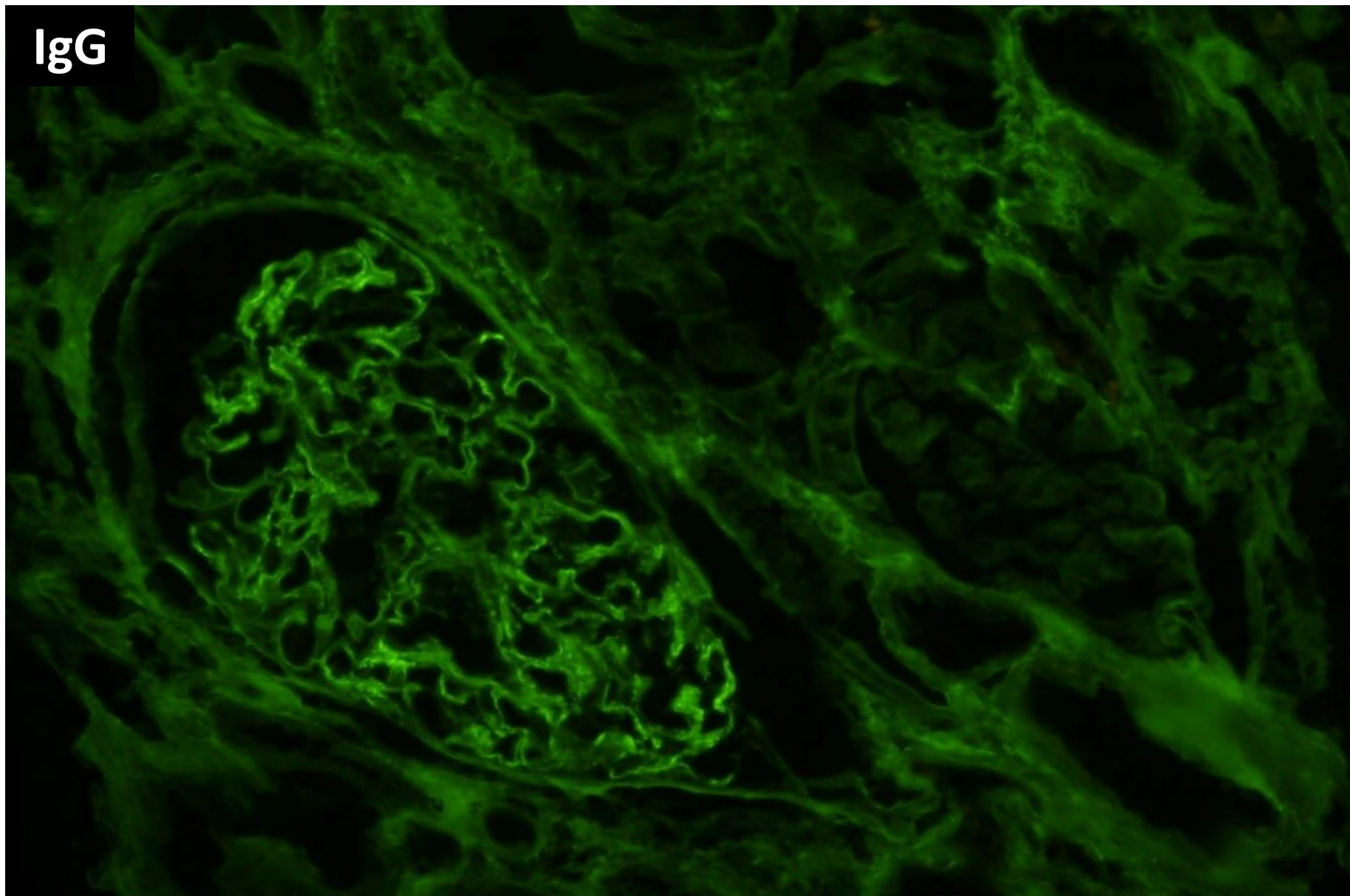
1.903 mm²



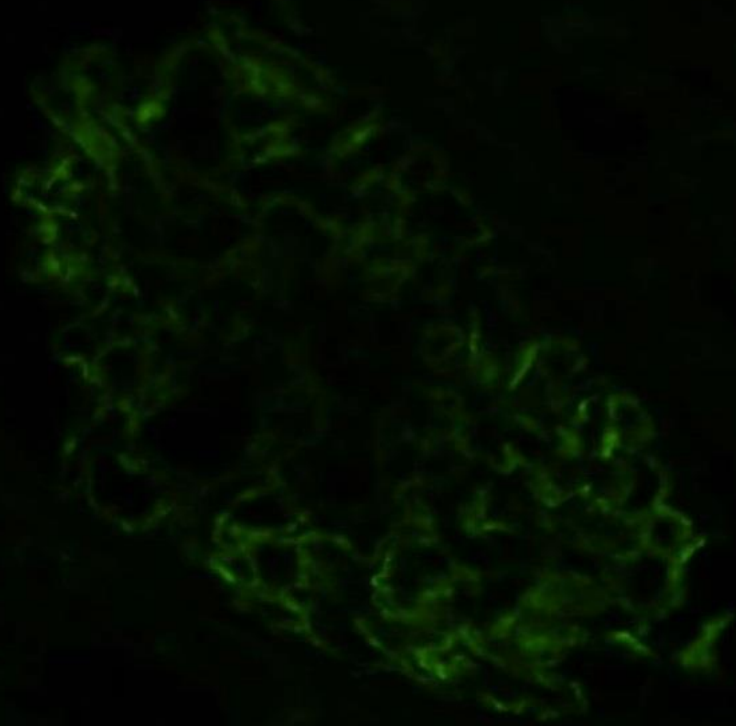




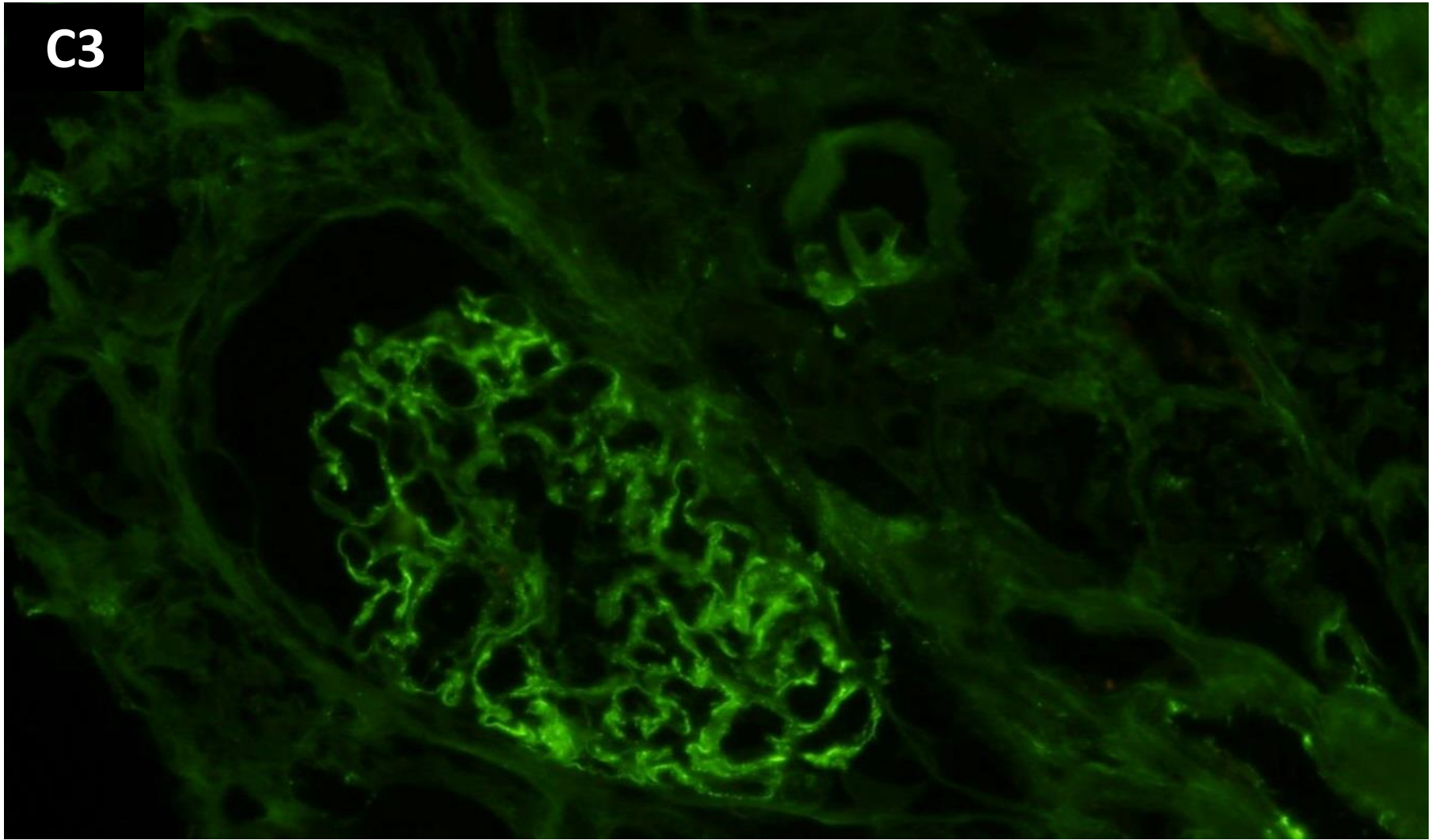
IgG

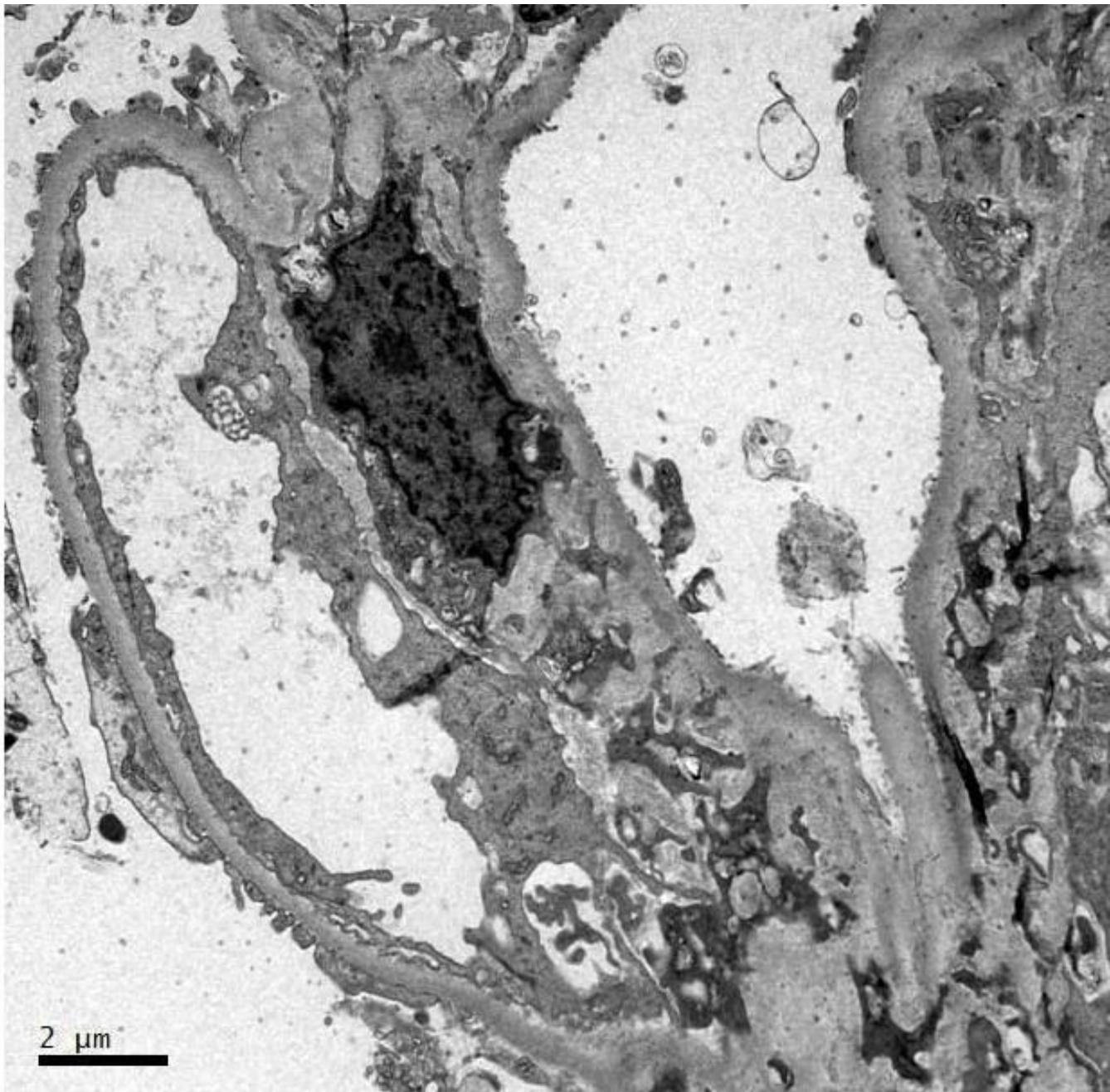


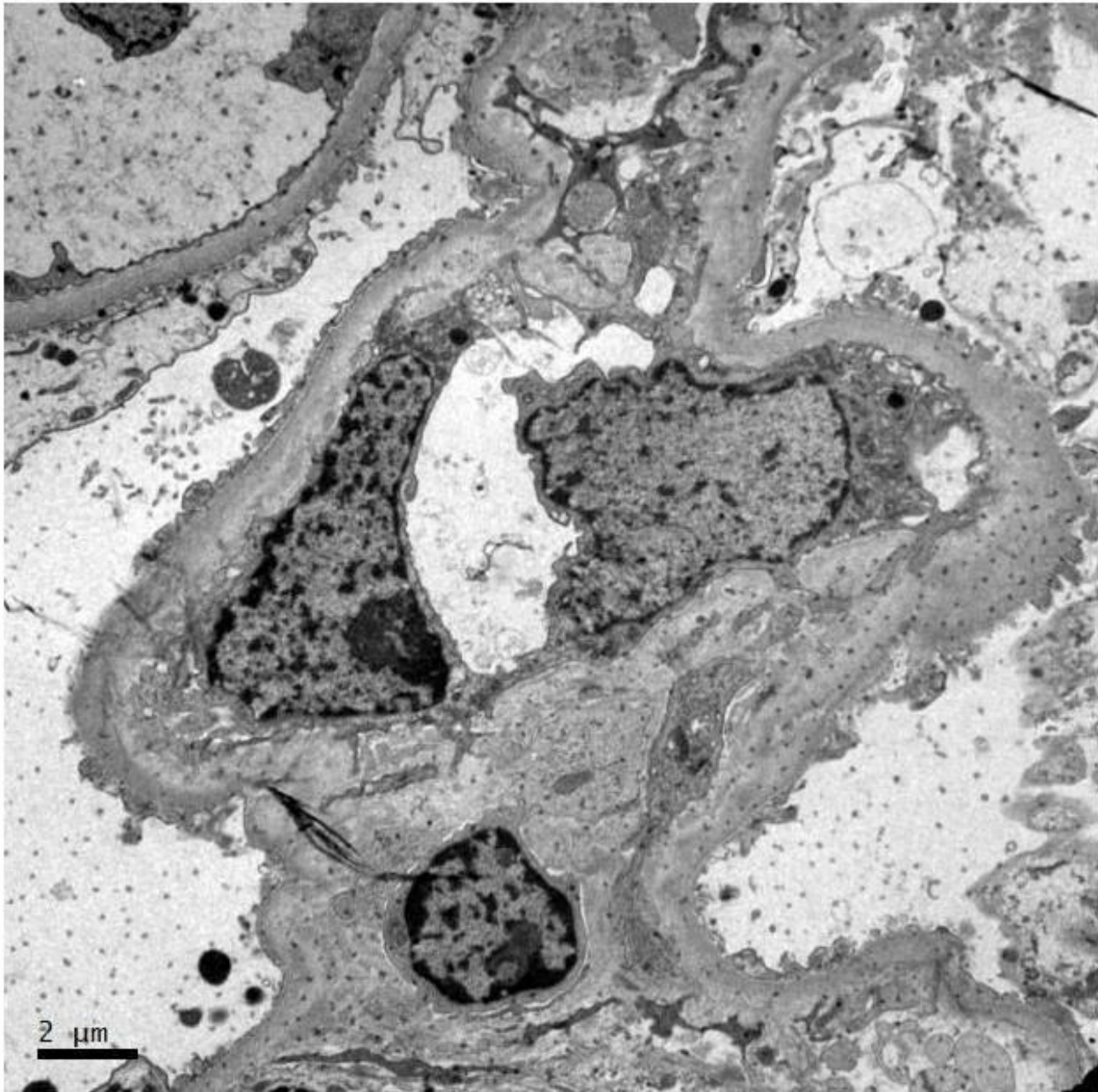
IgM

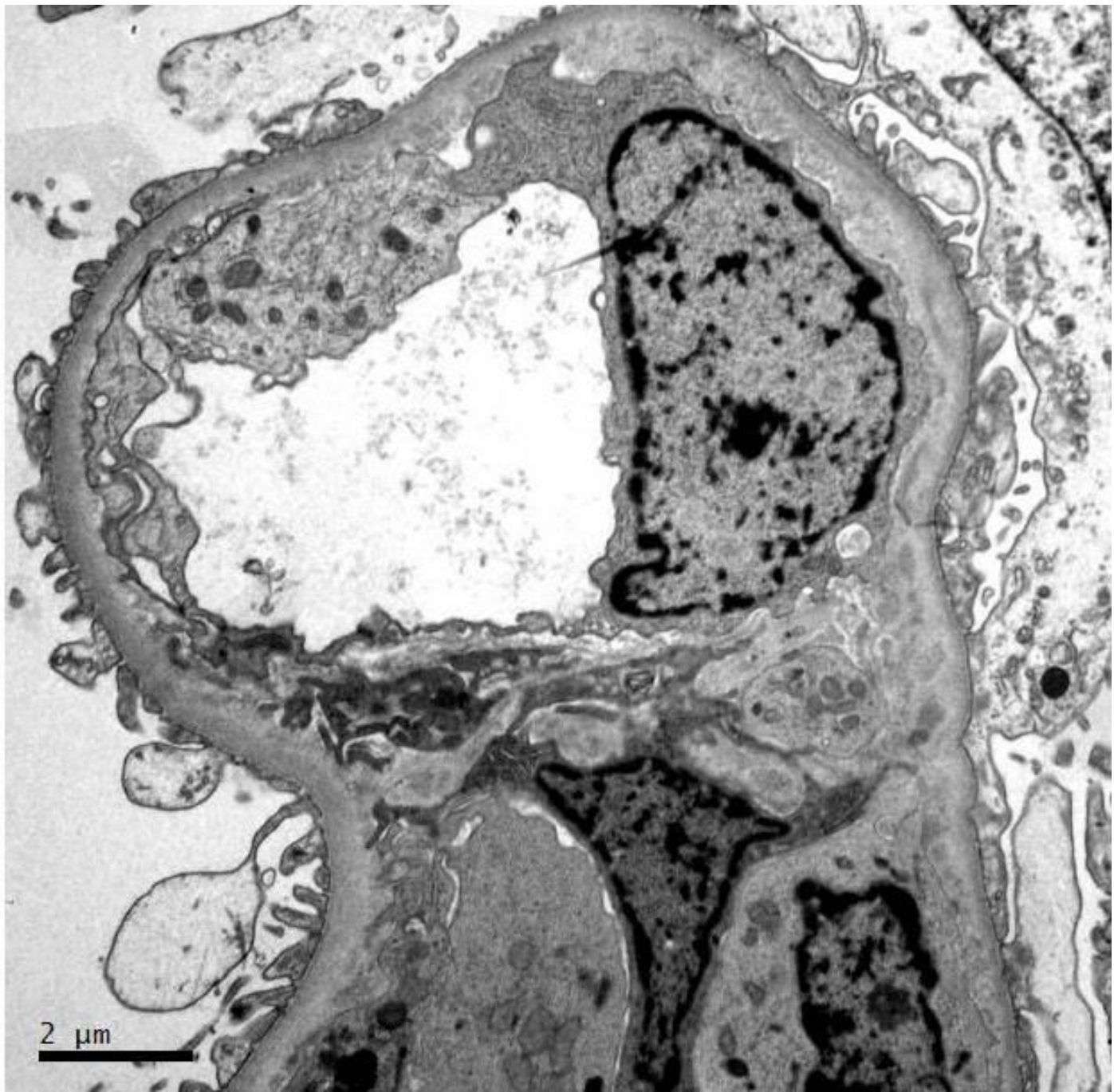


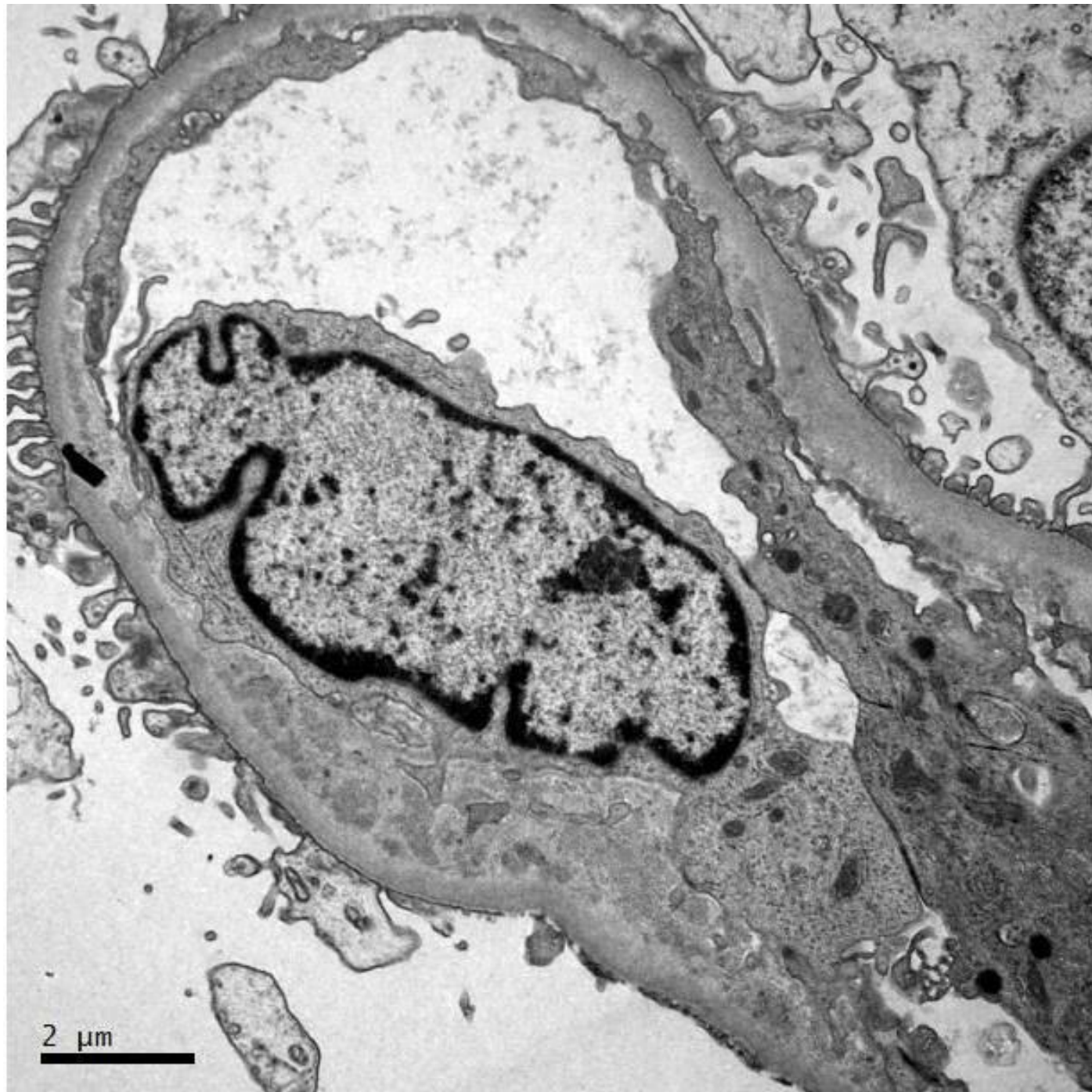
C3

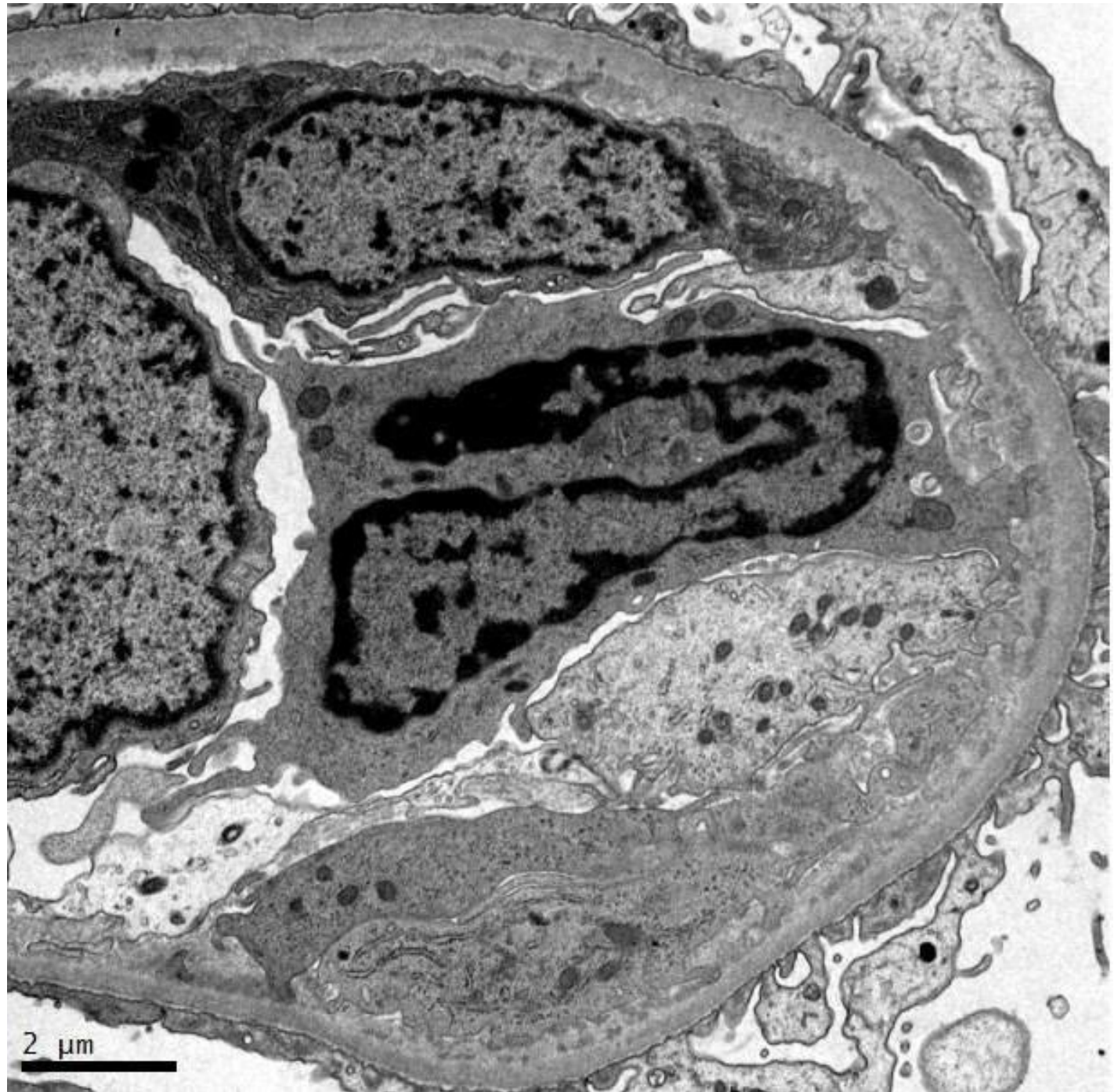














RENAL BIOPSY CLINICOPATHOLOGICAL WORKSHOP 2018



PATHOLOGY



Division of Pathology
Singapore General Hospital



Department of Renal Medicine
Singapore General Hospital



MEDICINE