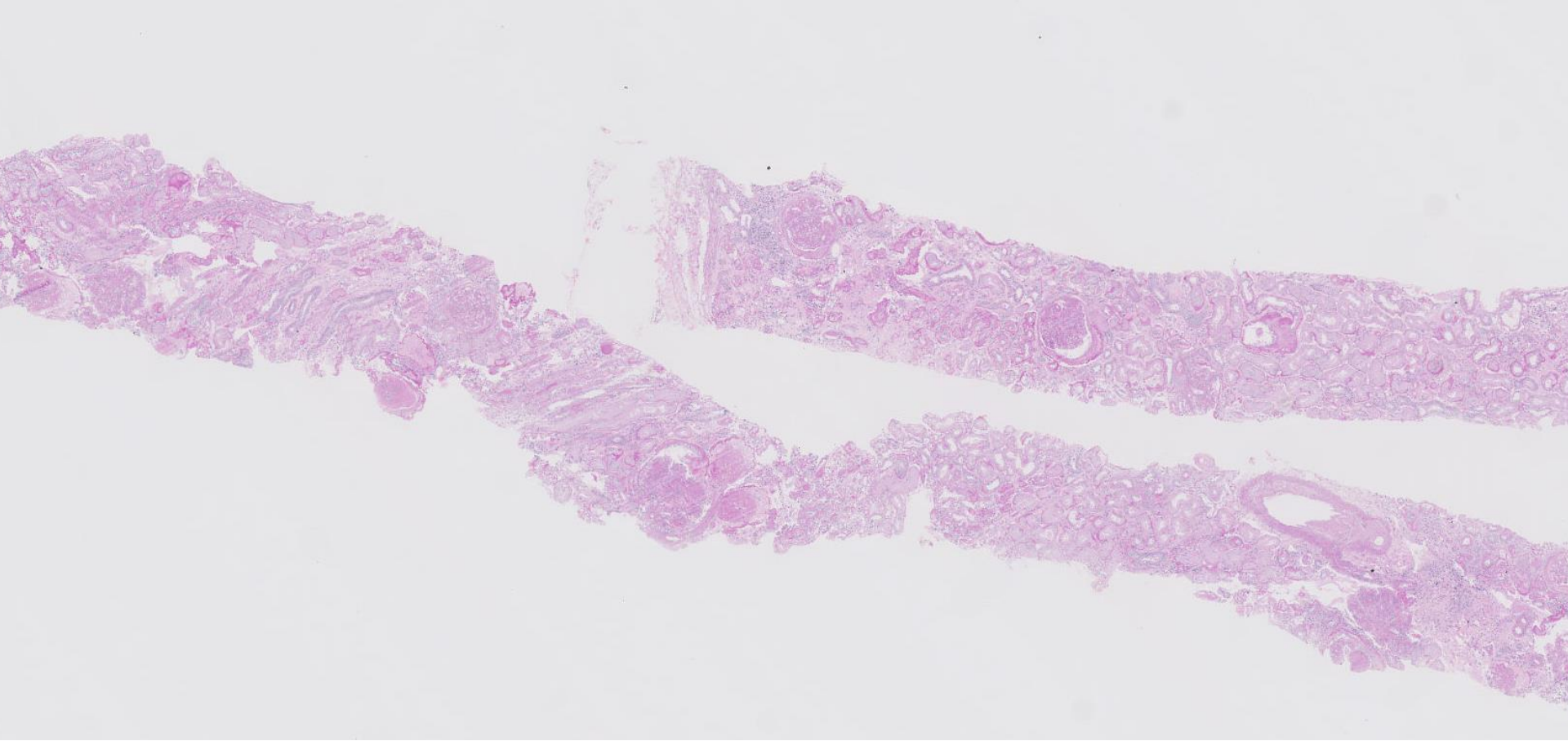
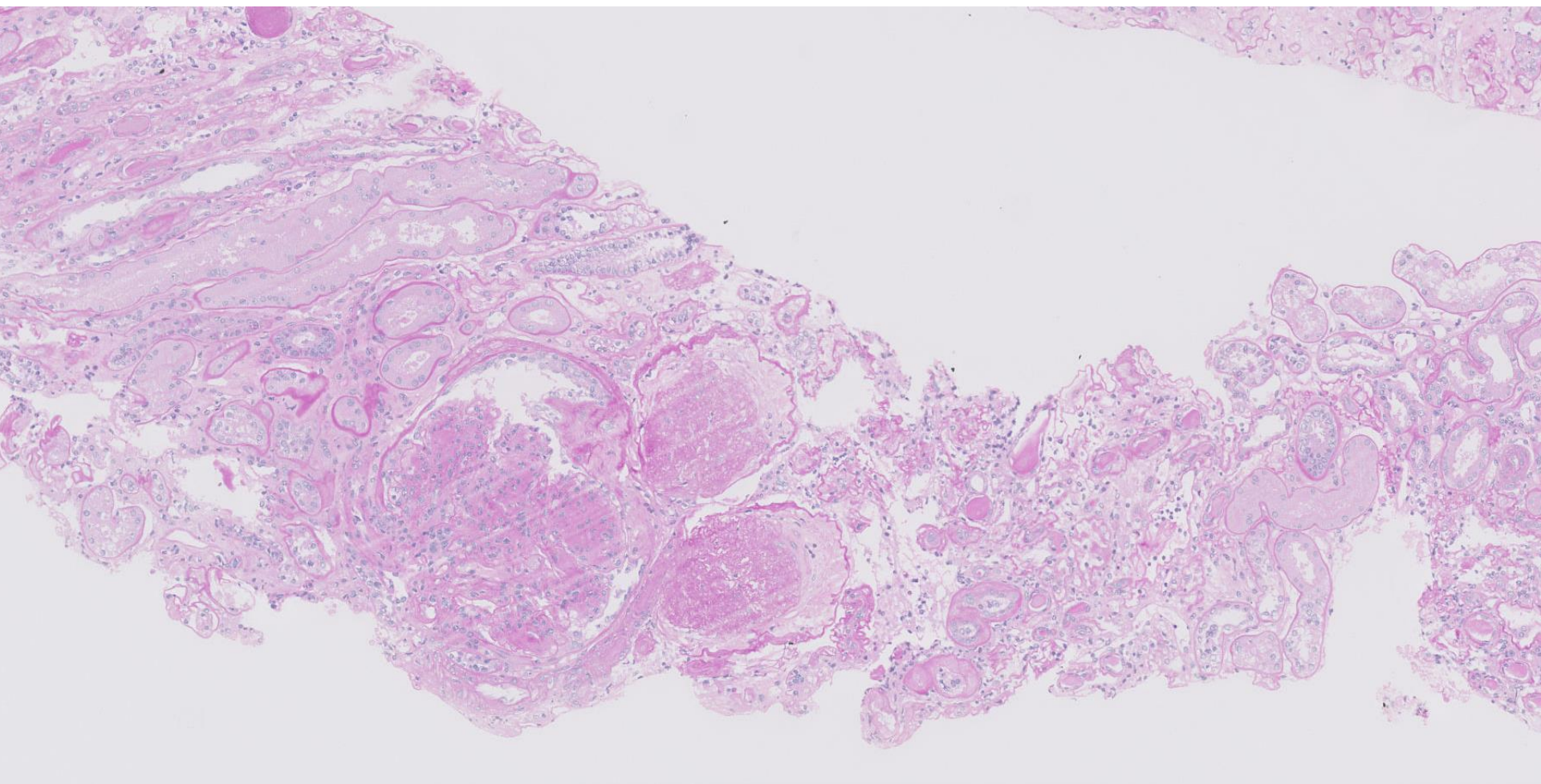
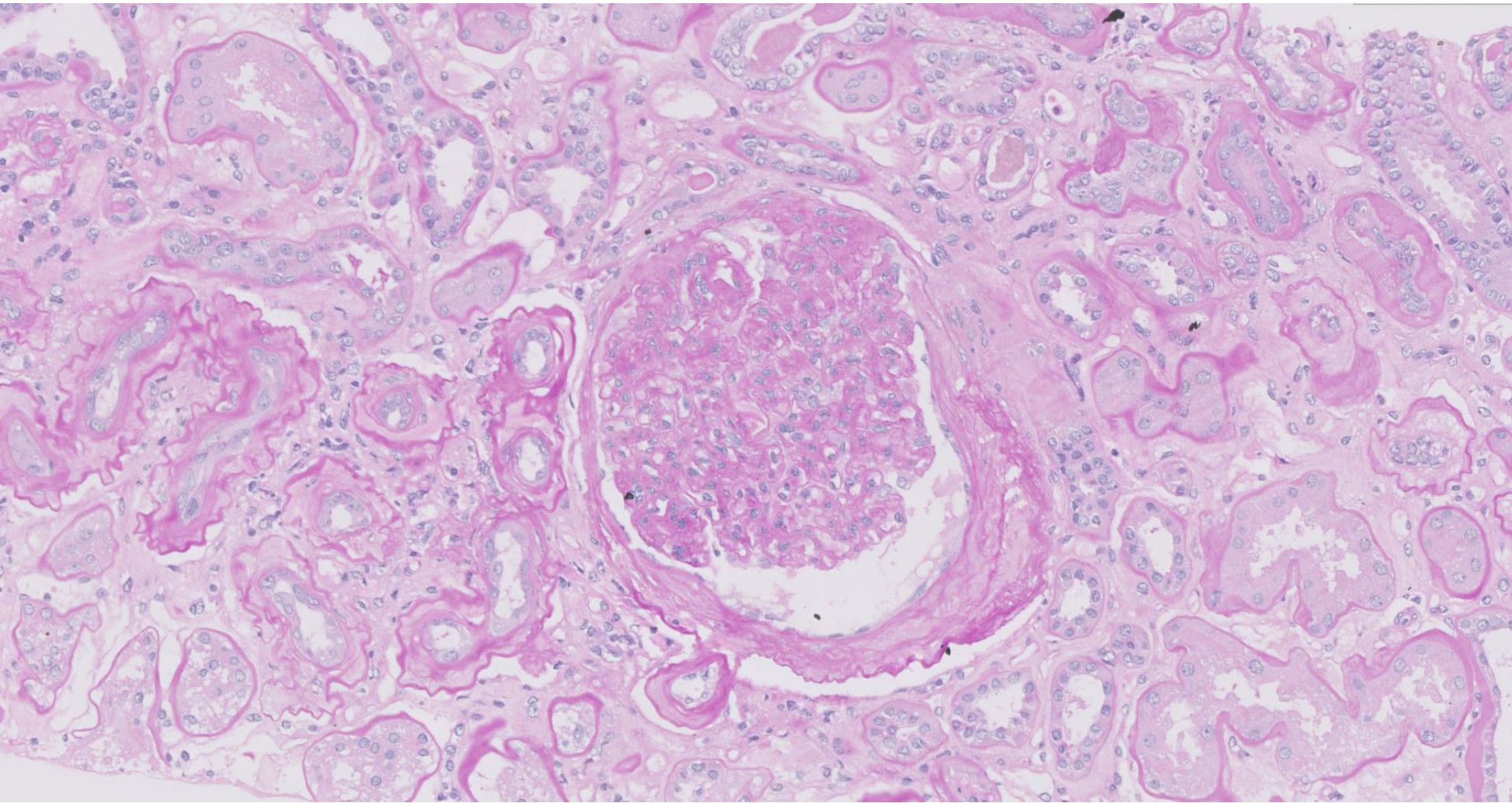


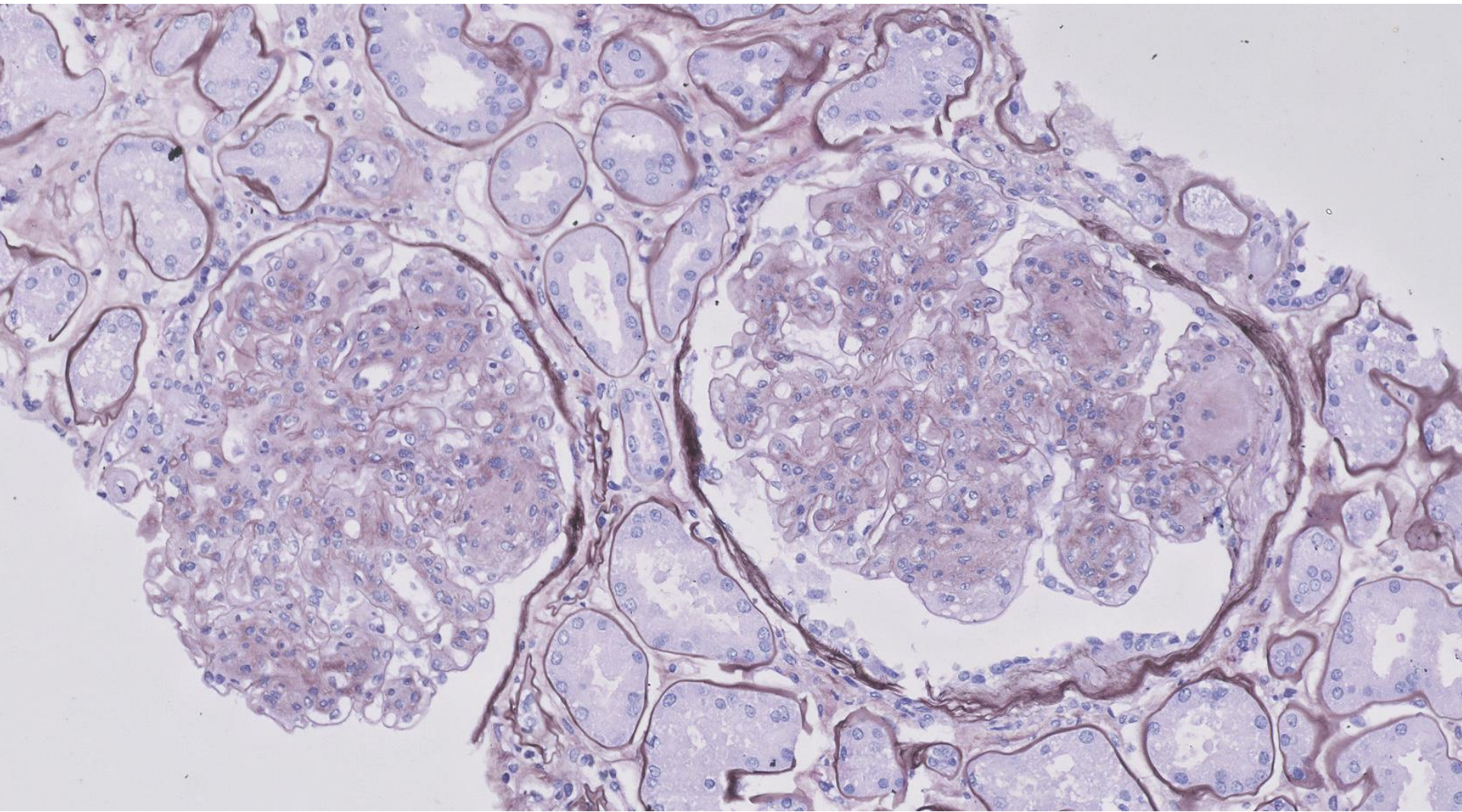
Case 25

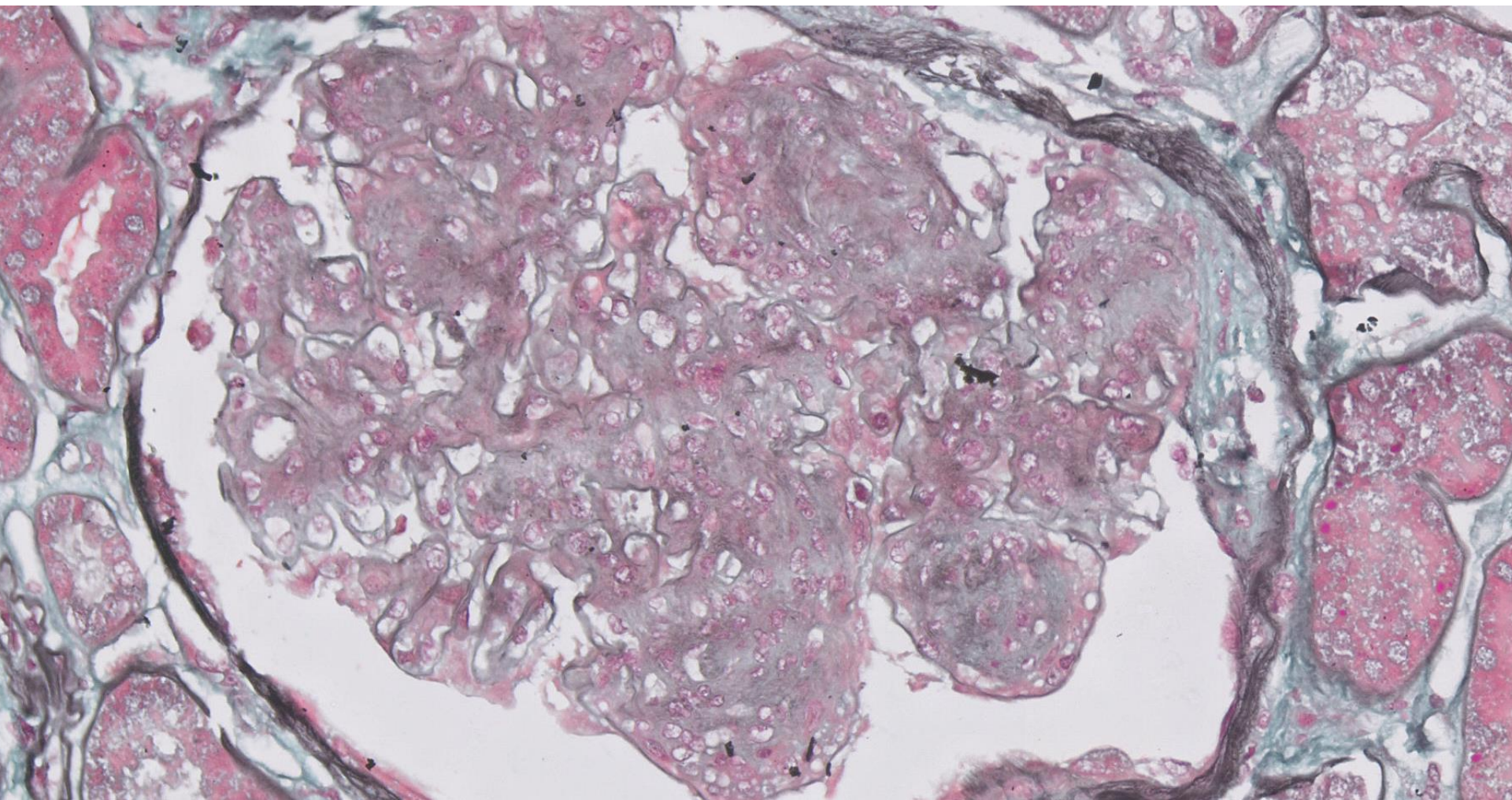
42 year old male defaulted follow up for hypertension and diabetes for 2 years, now presents with pedal oedema.



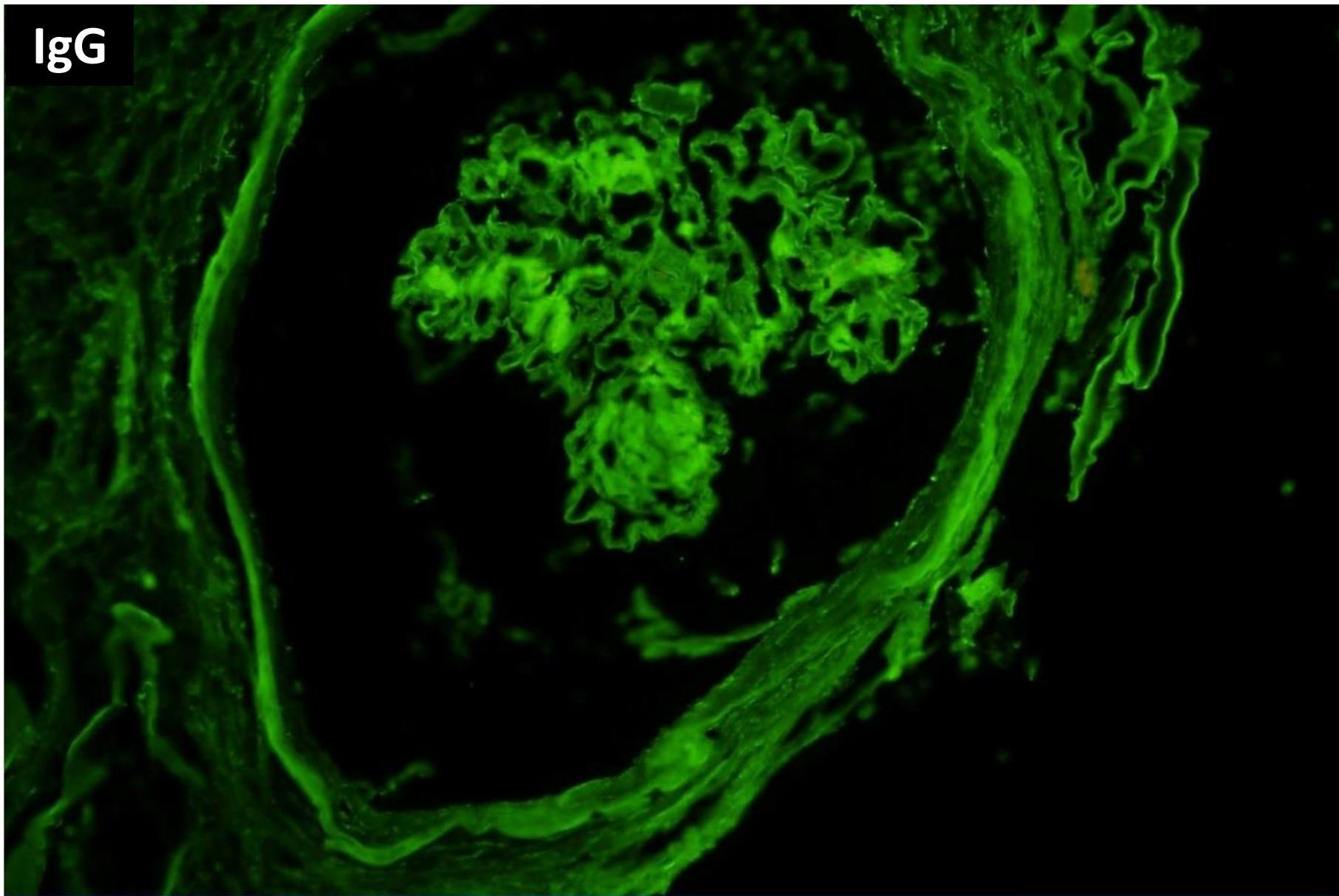




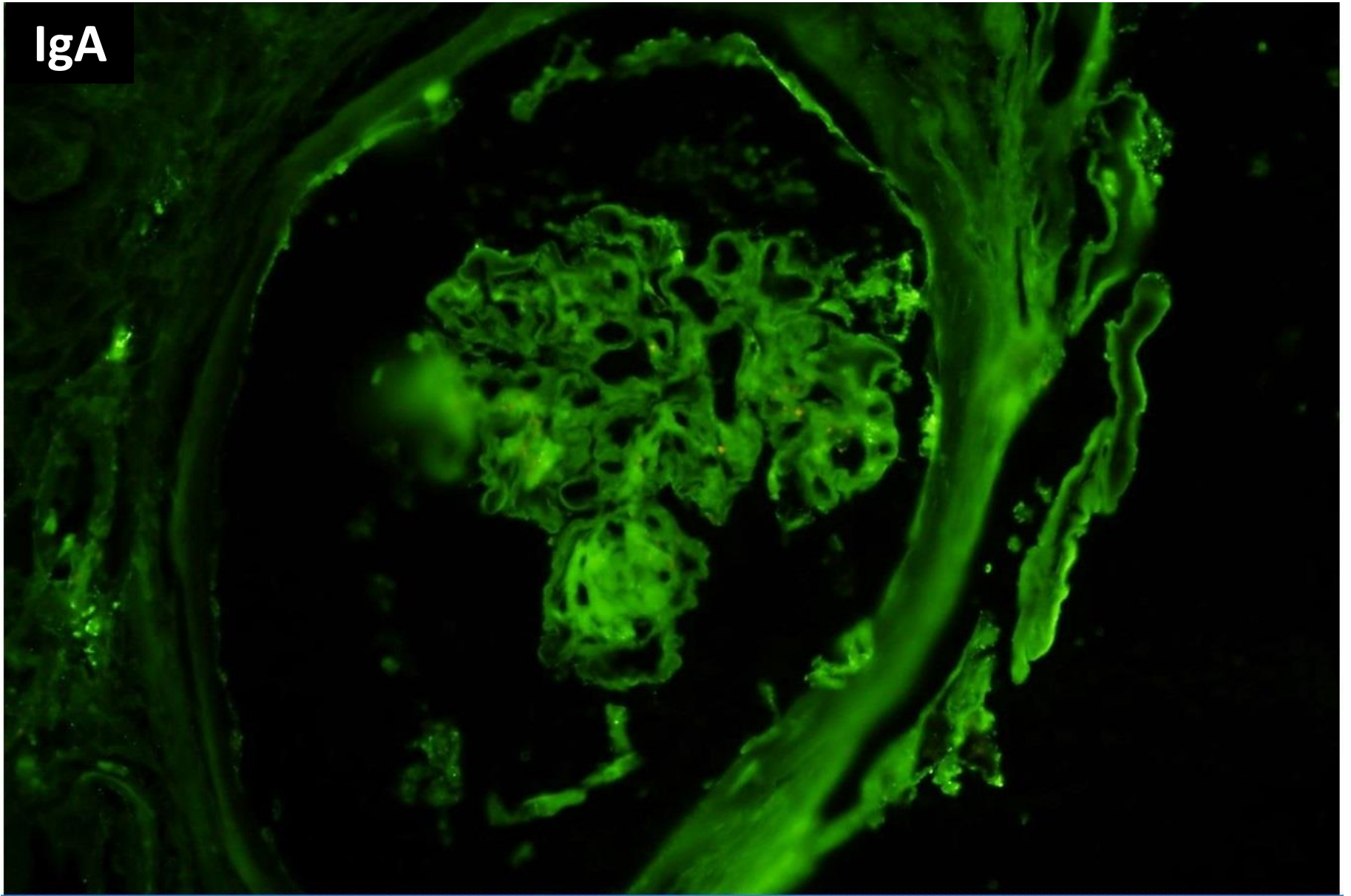




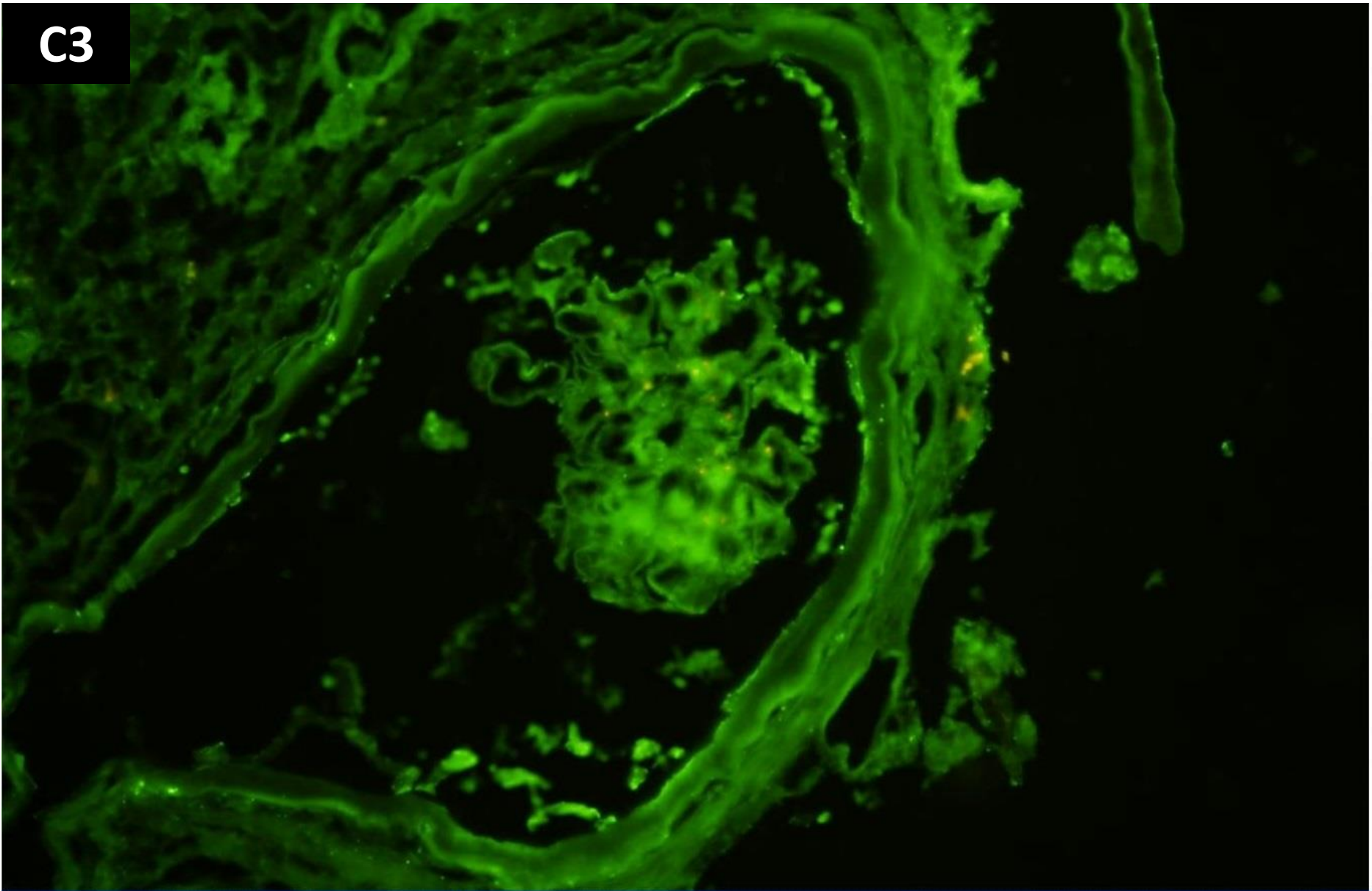
IgG

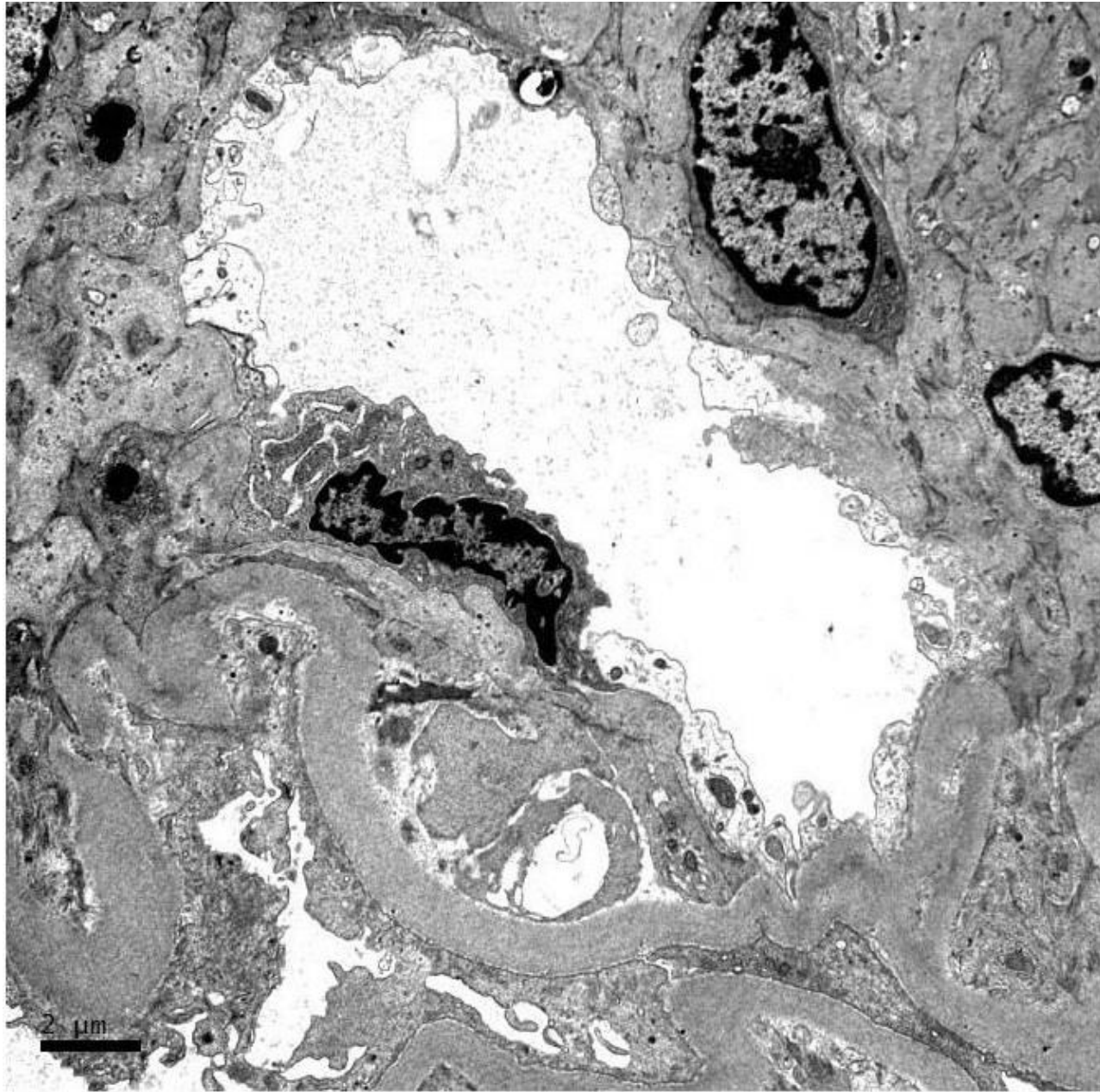


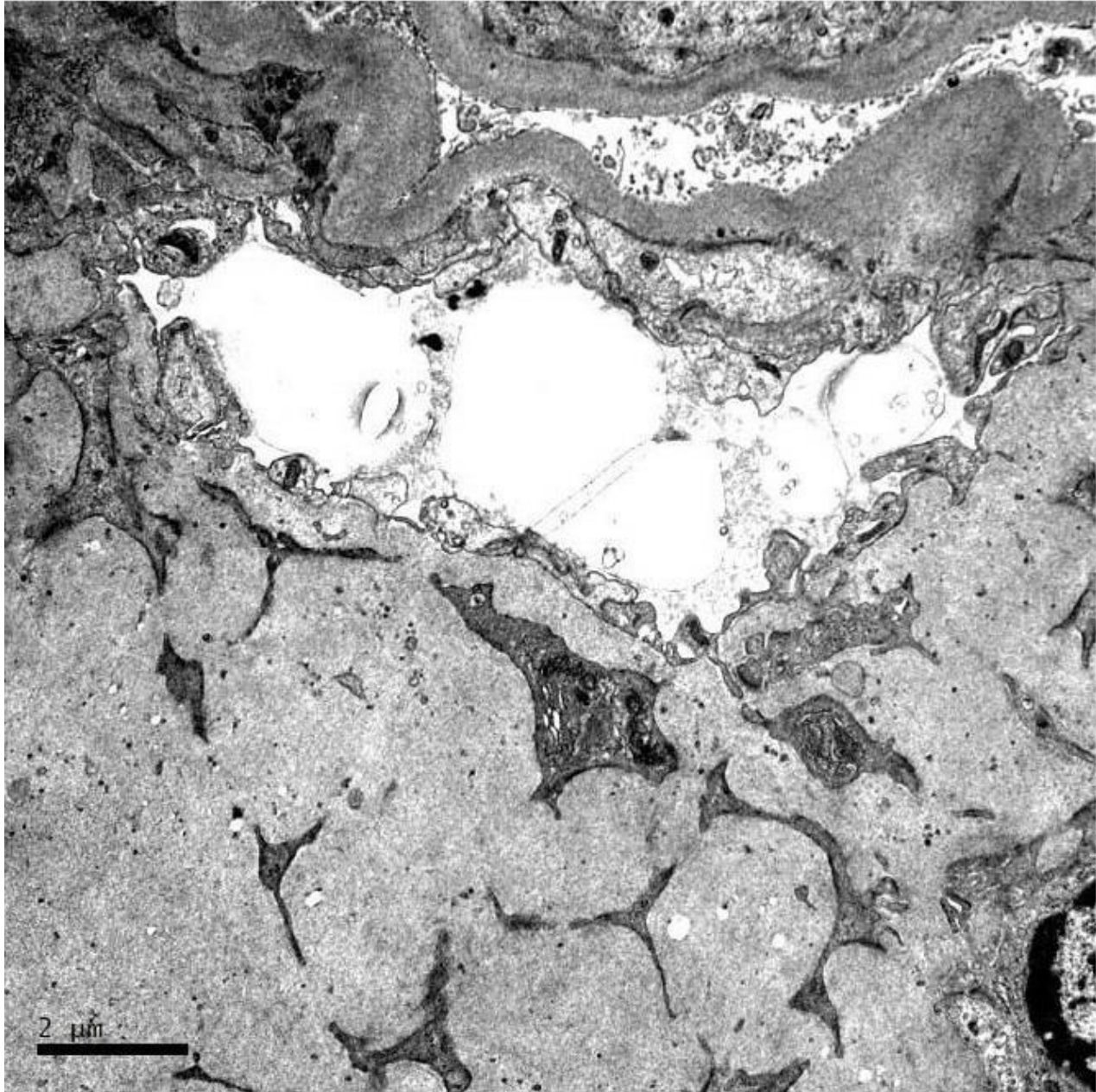
IgA



C3











RENAL BIOPSY CLINICOPATHOLOGICAL WORKSHOP 2018



PATHOLOGY



Division of Pathology
Singapore General Hospital



Department of Renal Medicine
Singapore General Hospital



MEDICINE