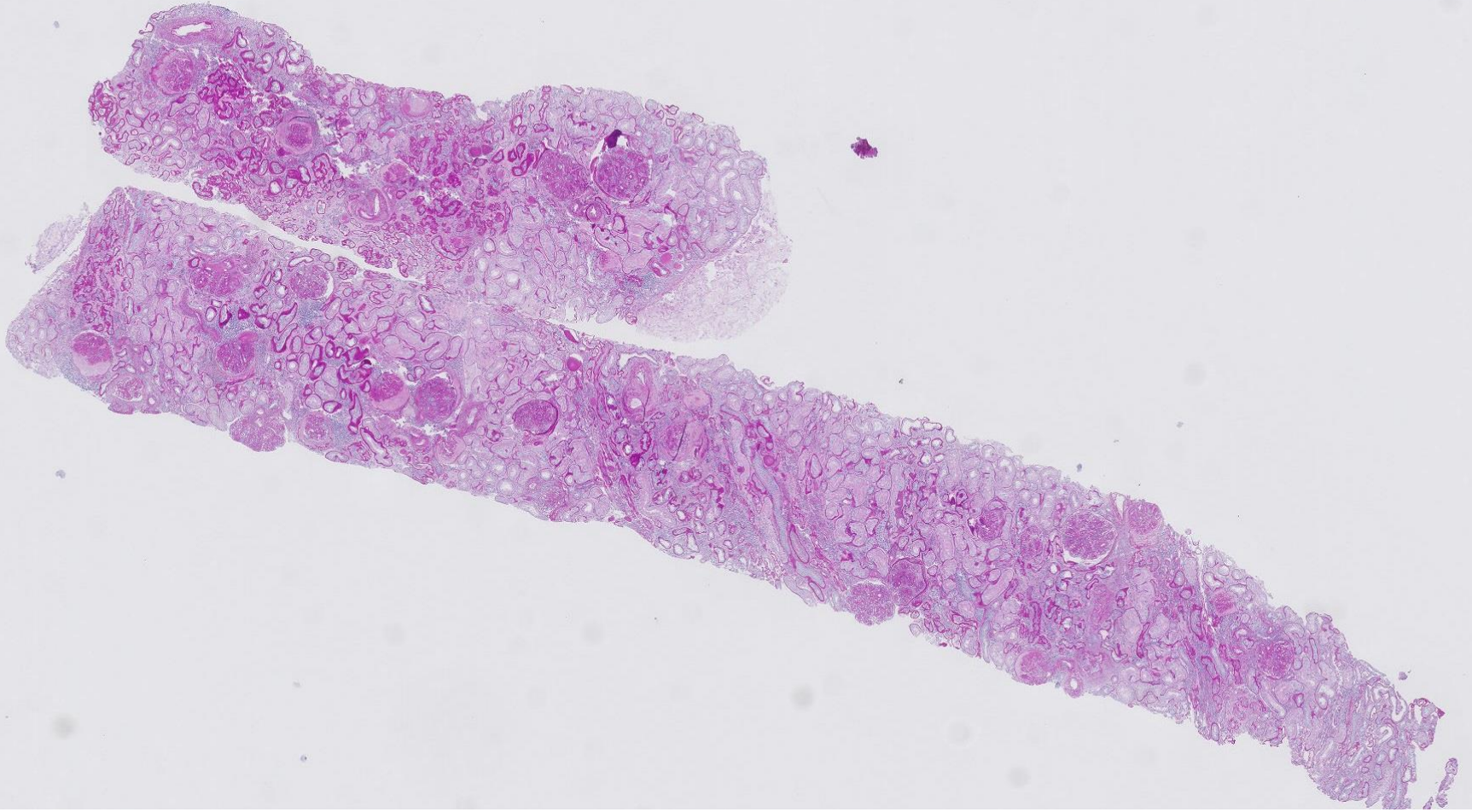


## Case 24

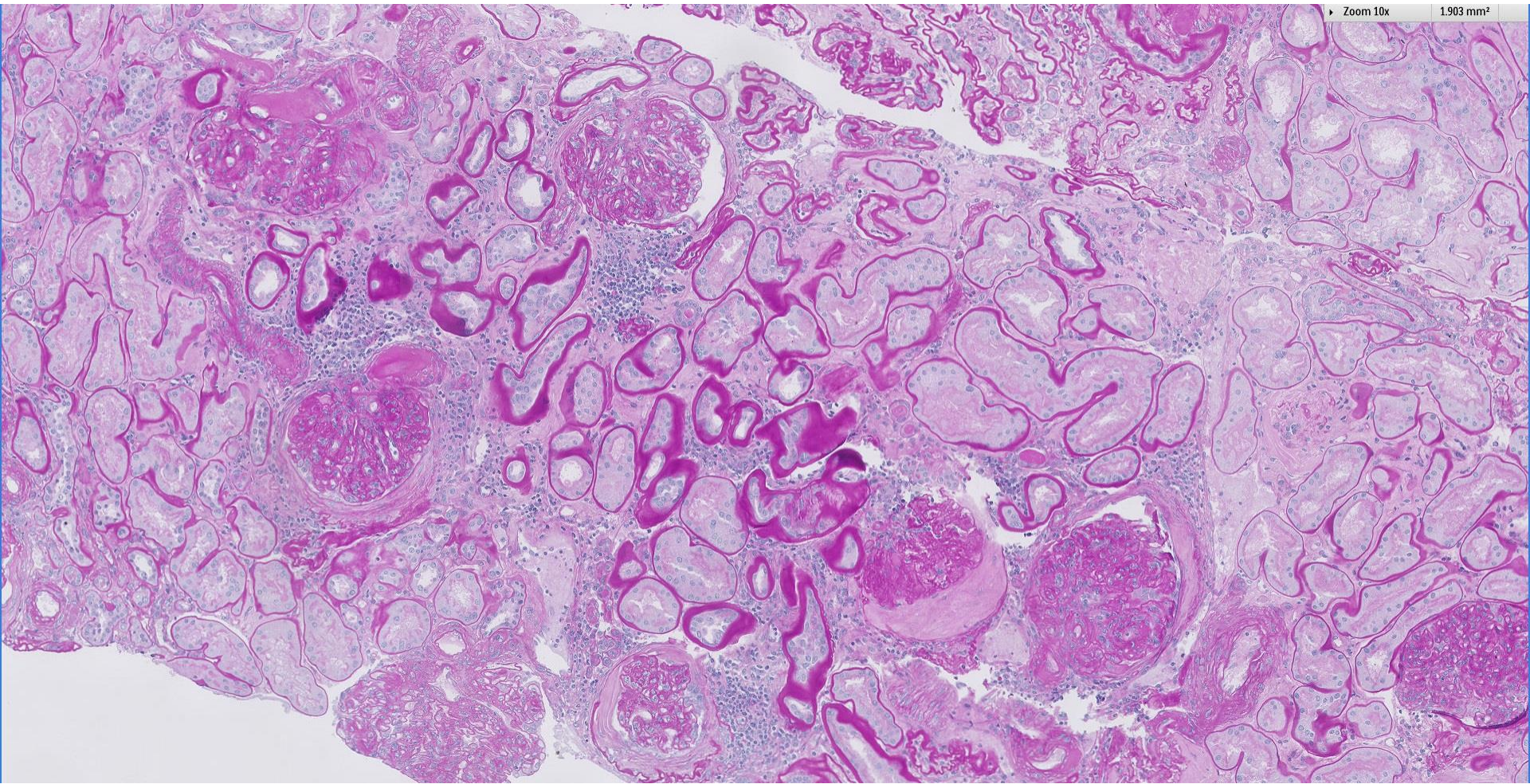
71 year old female with monoclonal gammopathy of undetermined significance (MGUS) and diabetes mellitus now has nephrotic range proteinuria and glomerular haematuria.





Zoom 10x

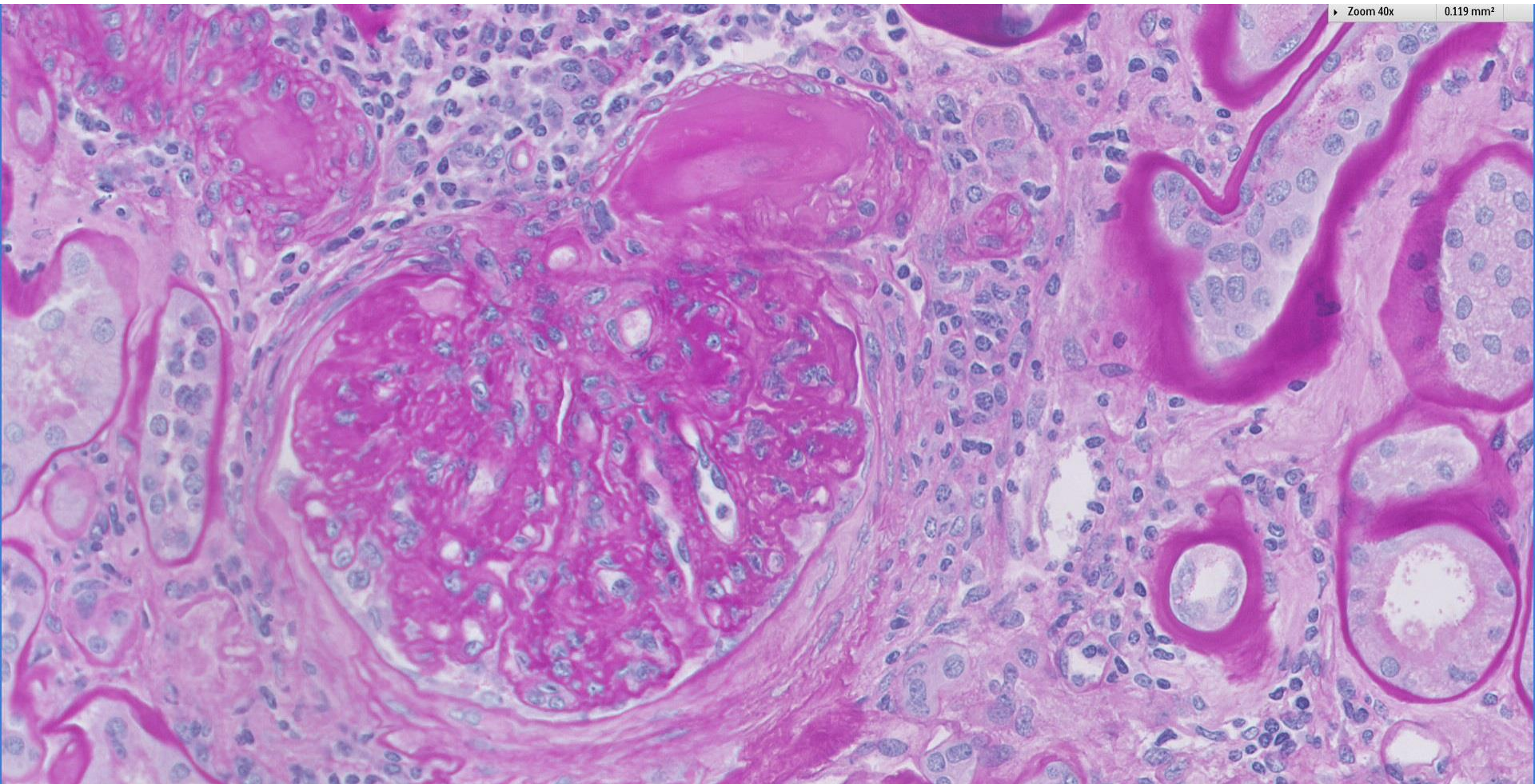
1.903 mm<sup>2</sup>



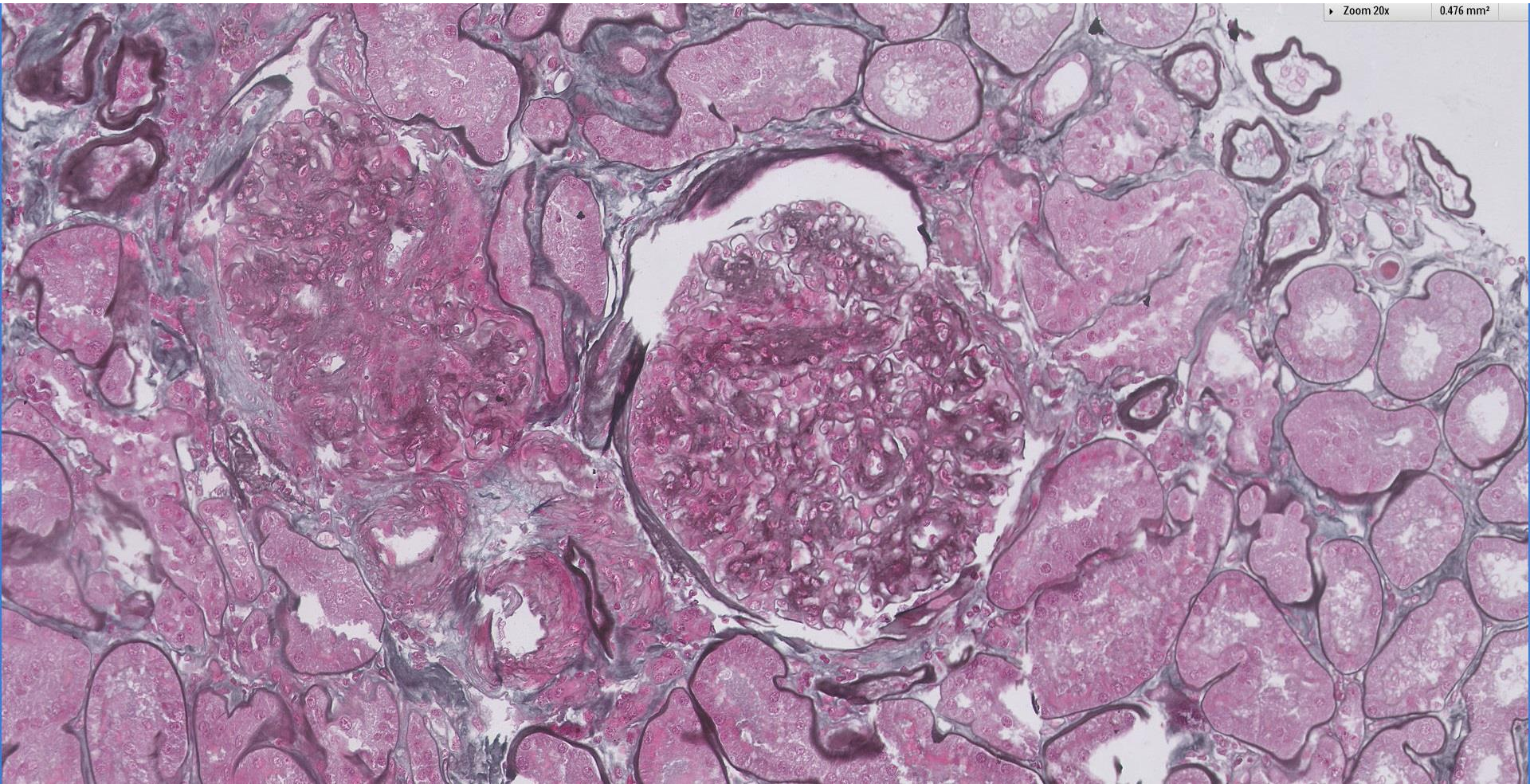


Zoom 40x

0.119 mm<sup>2</sup>

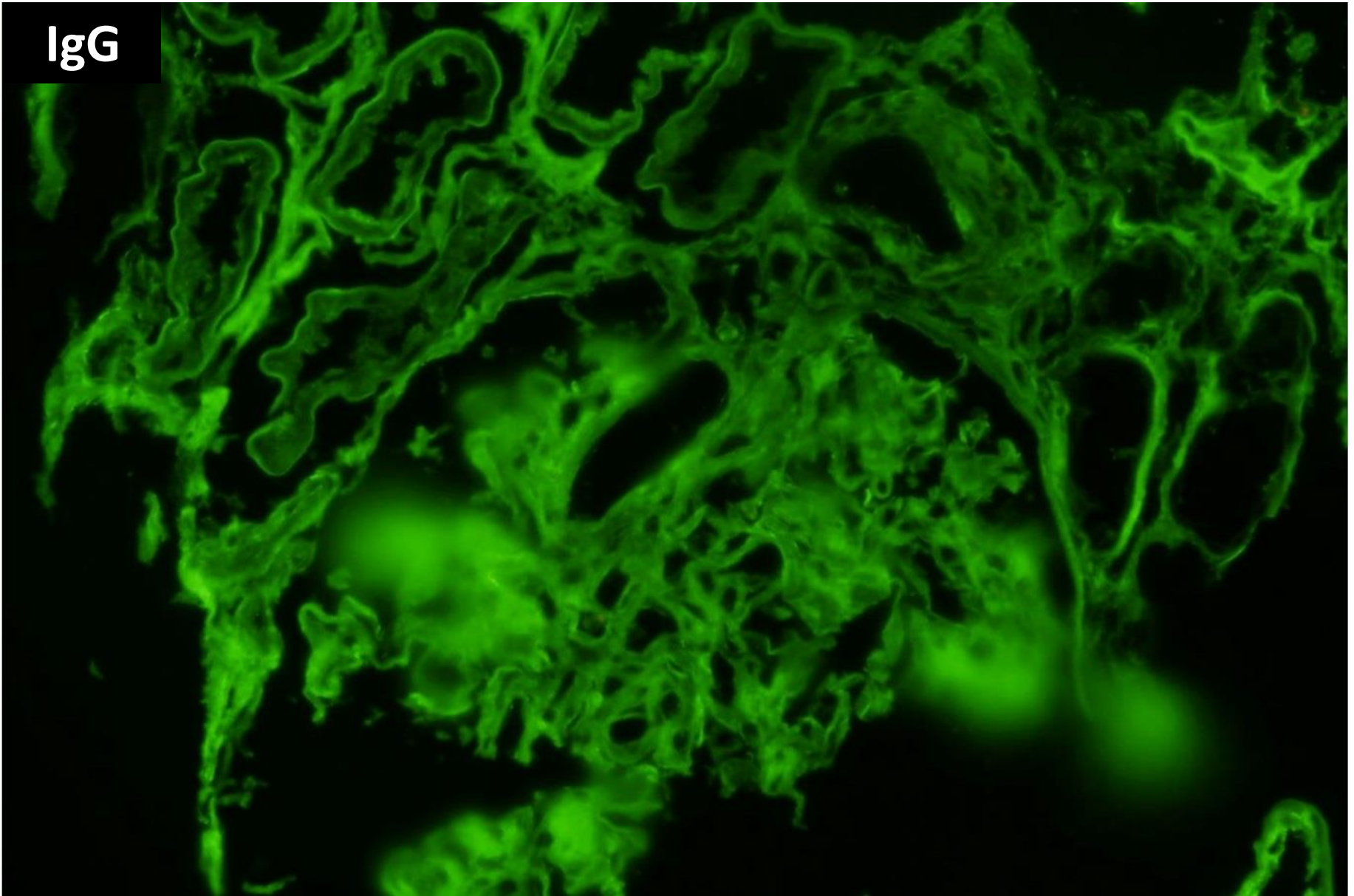




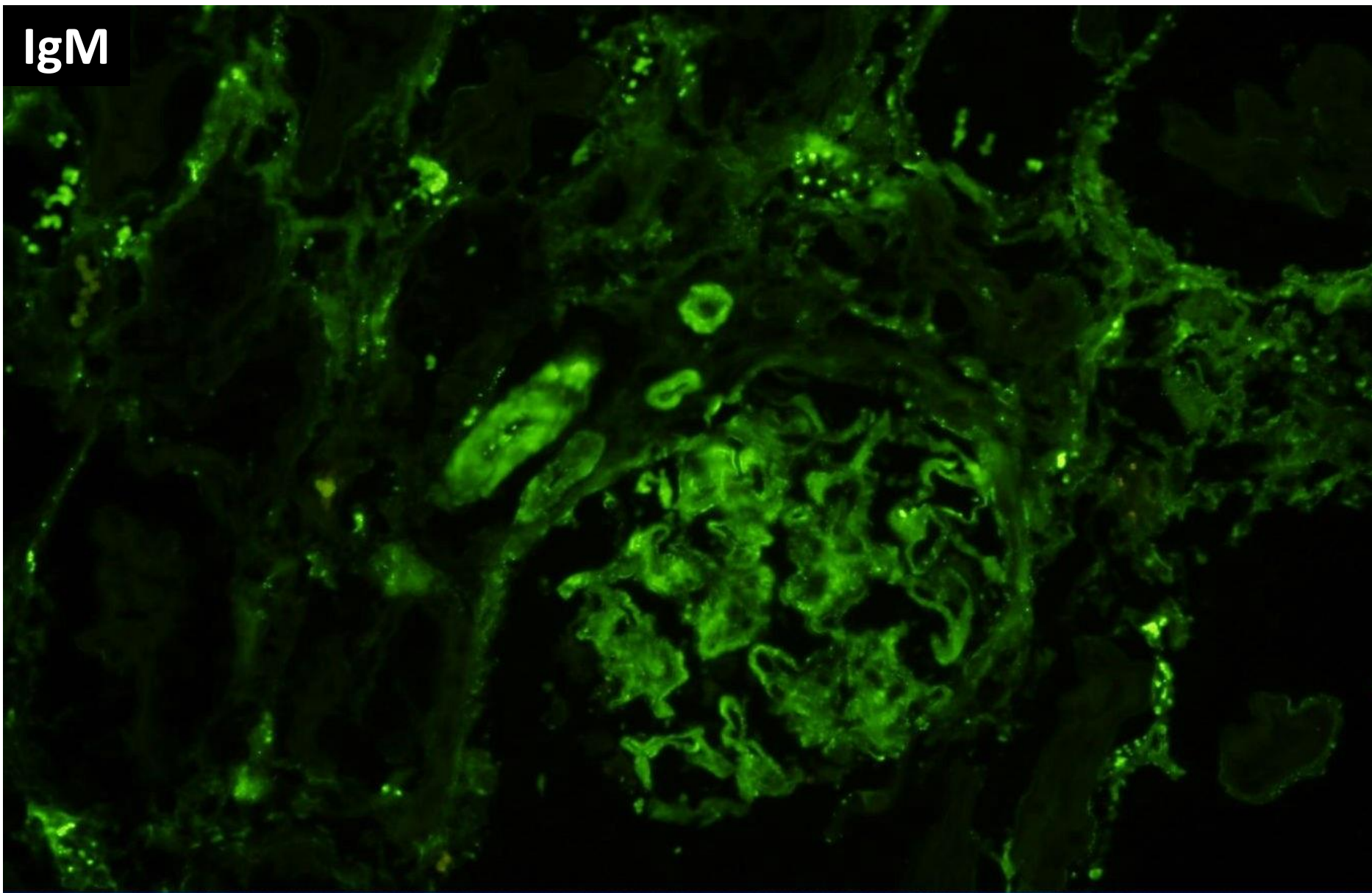




IgG

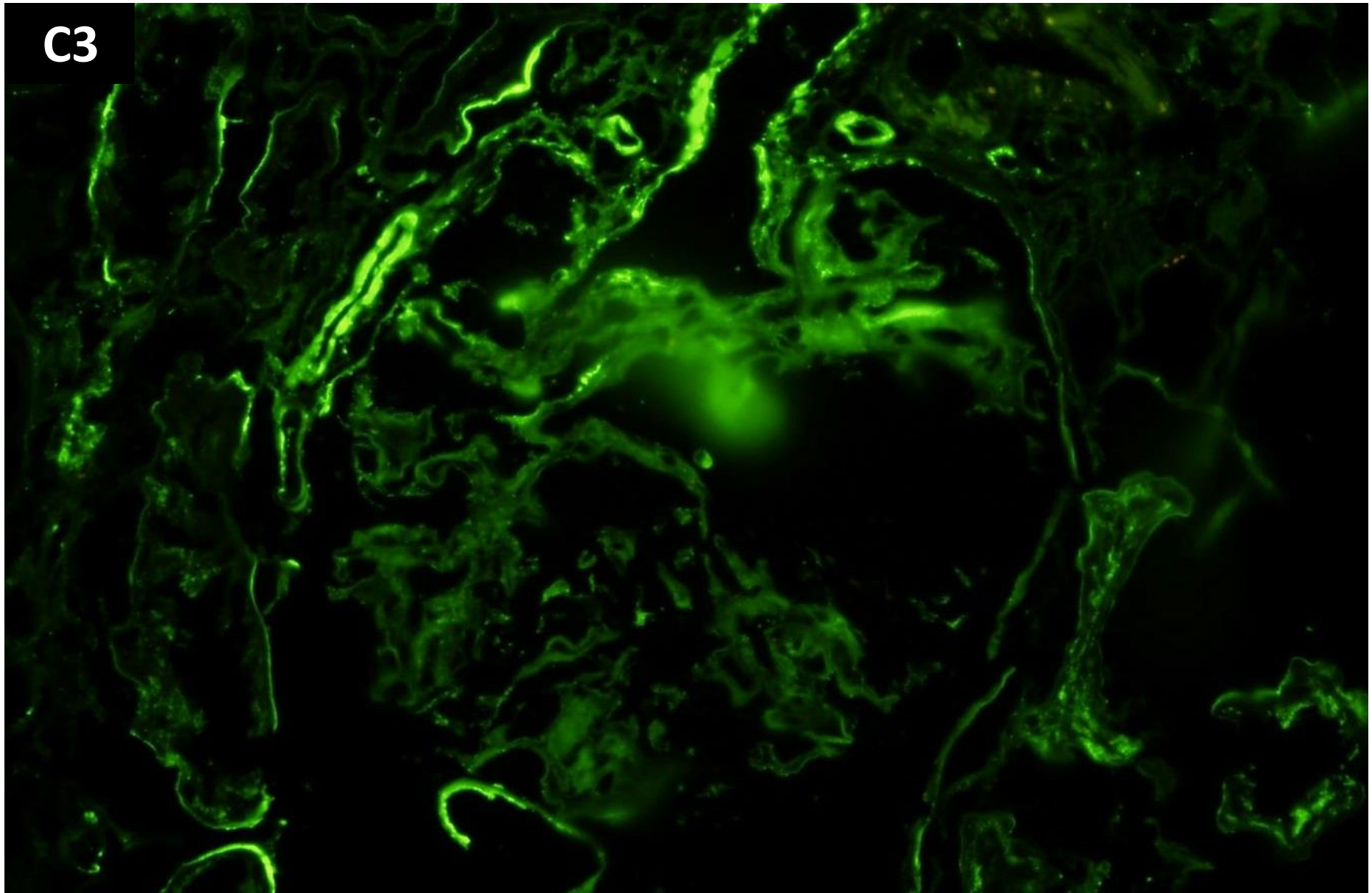


IgM

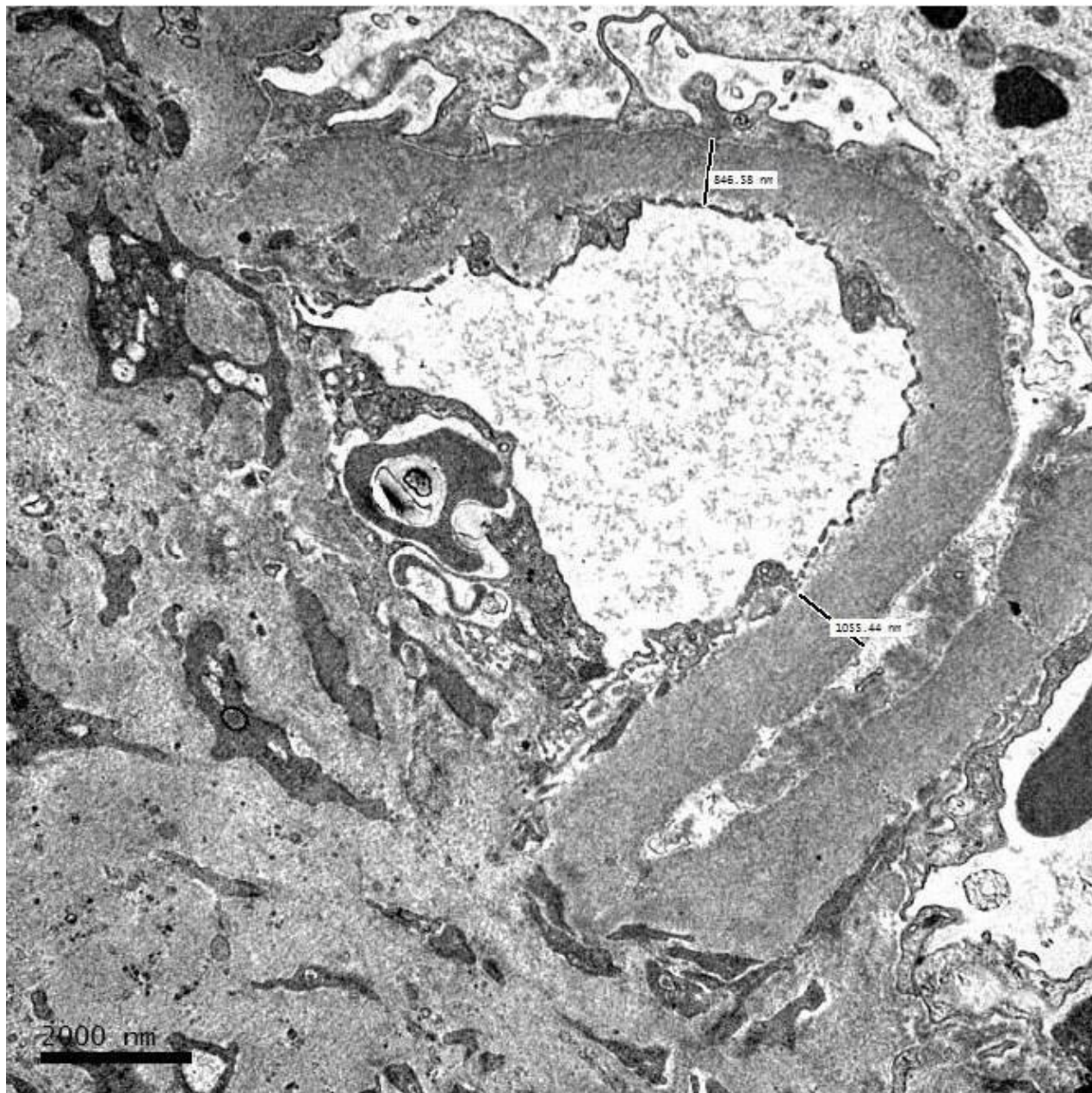


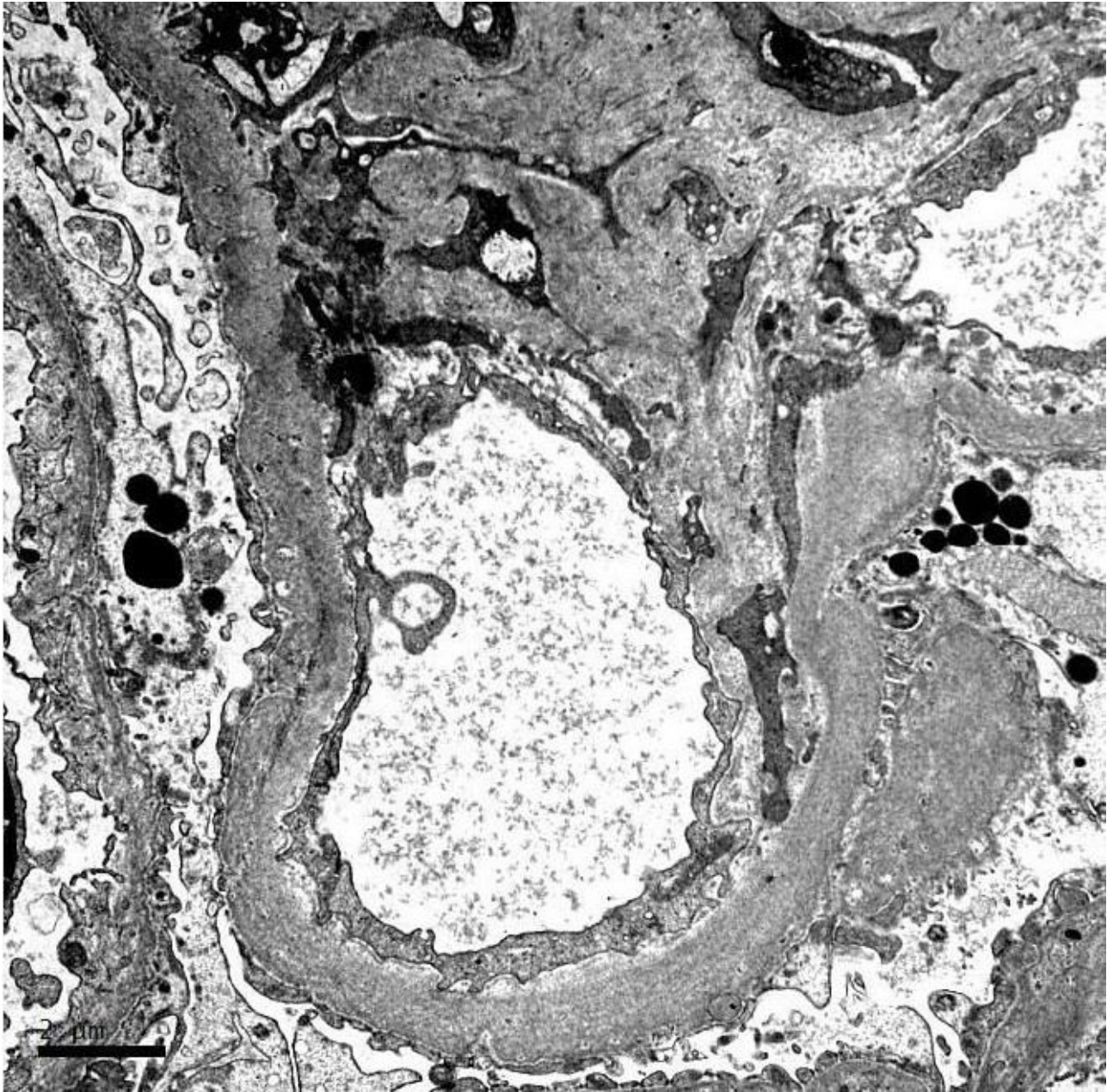


C3

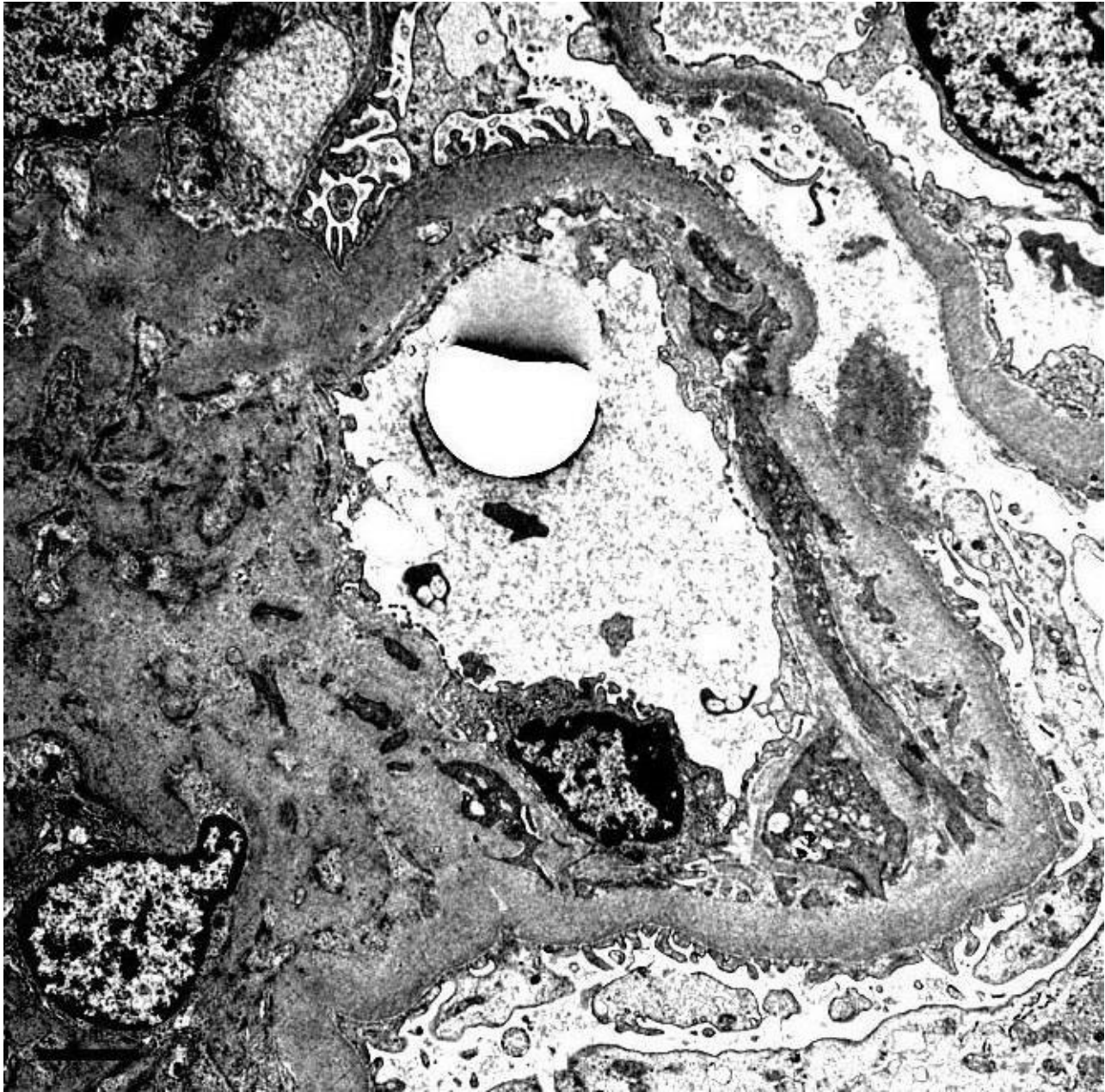


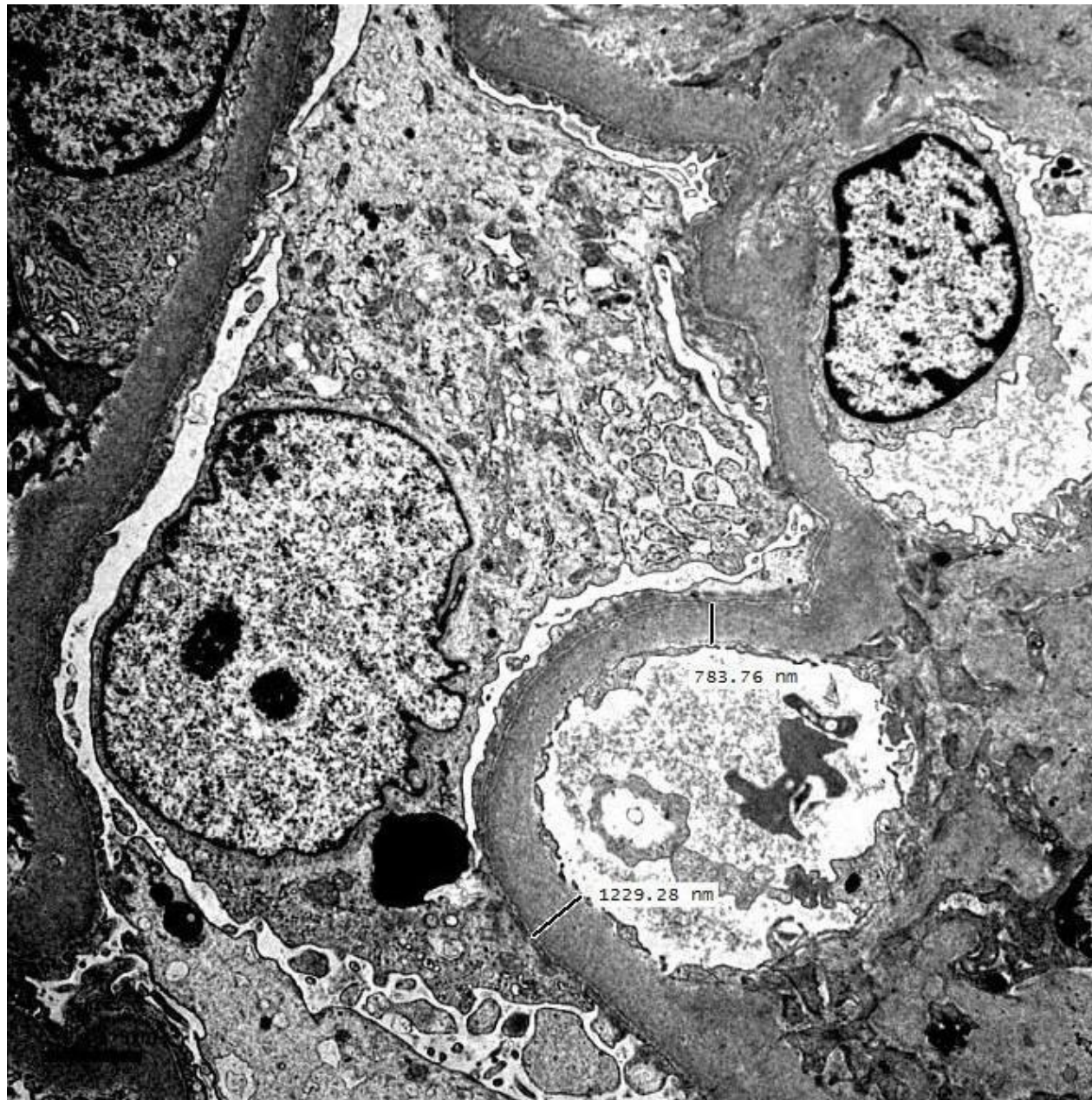
















# RENAL BIOPSY CLINICOPATHOLOGICAL WORKSHOP 2018



**PATHOLOGY**



Division of Pathology  
Singapore General Hospital



Department of Renal Medicine  
Singapore General Hospital



**MEDICINE**