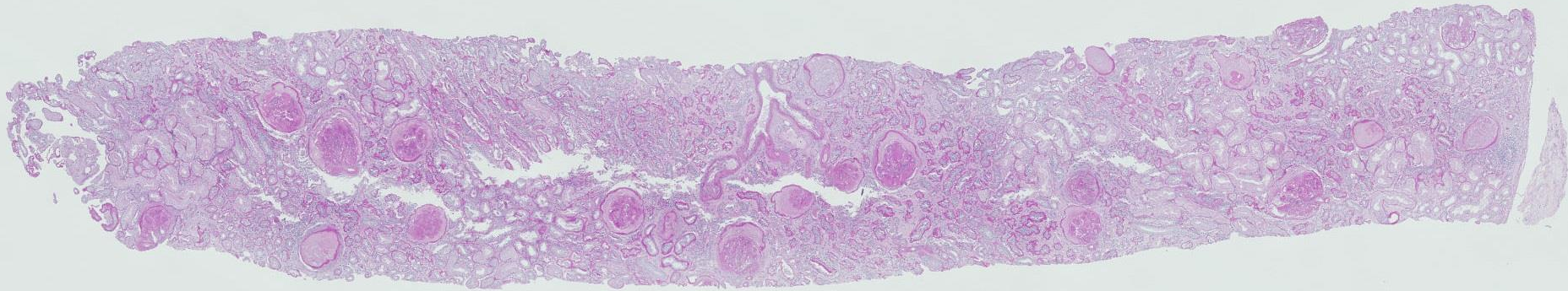
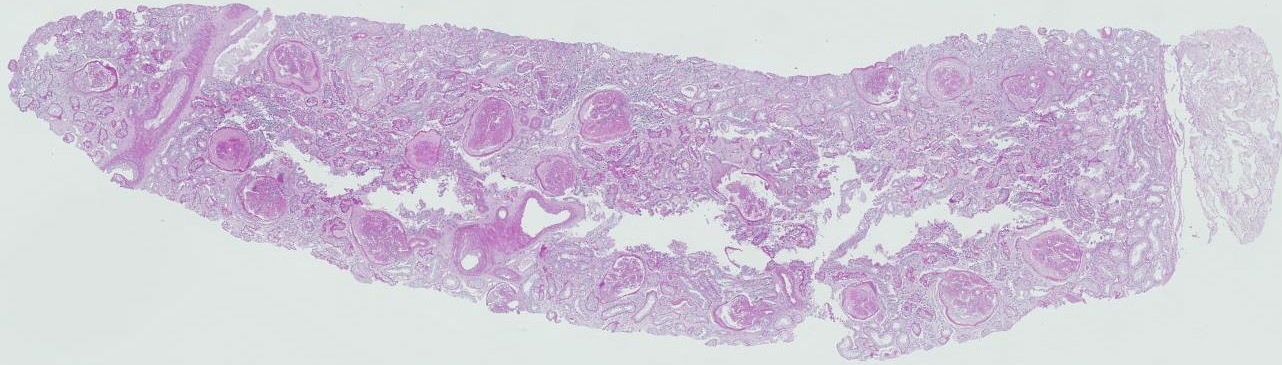
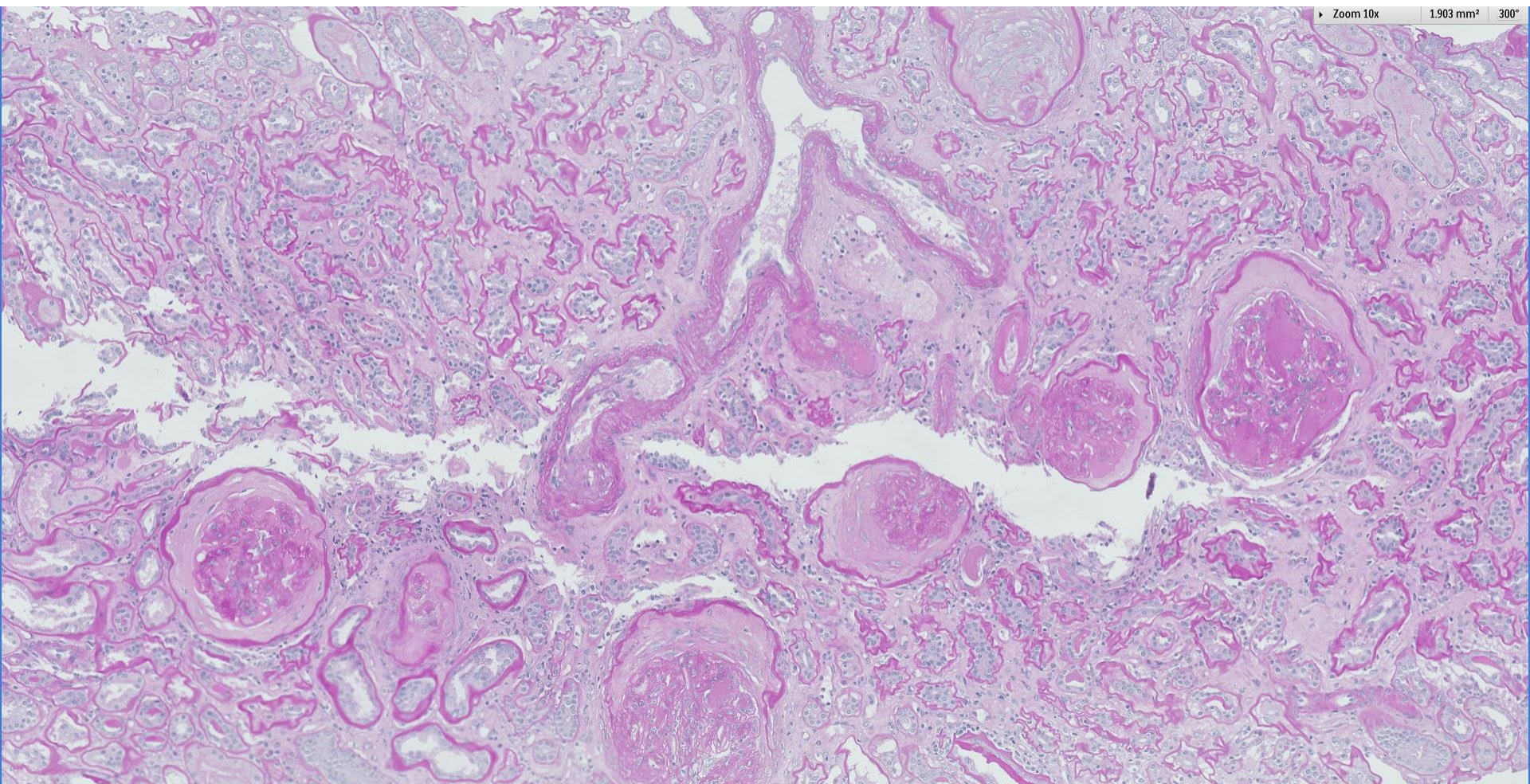
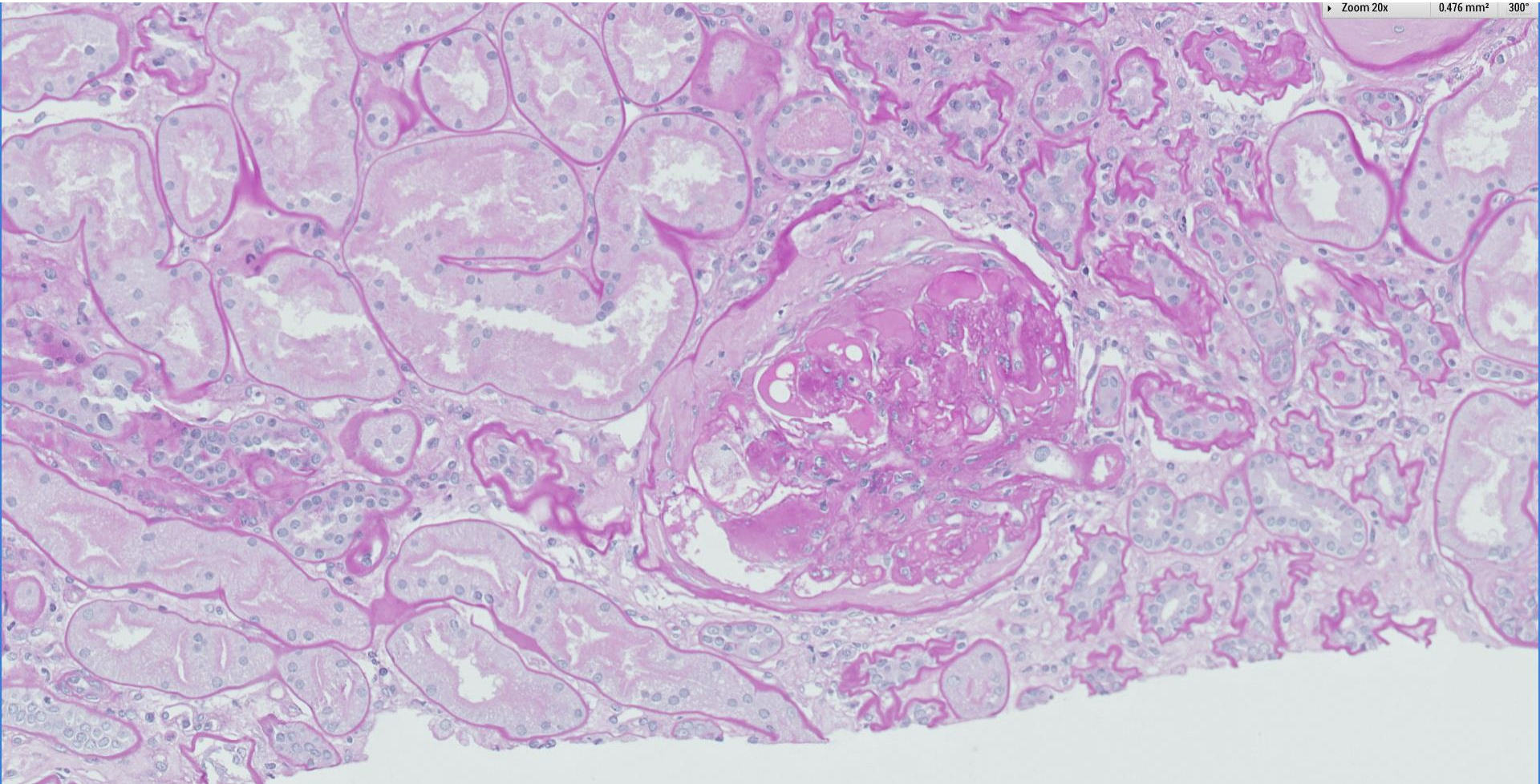


Case 20

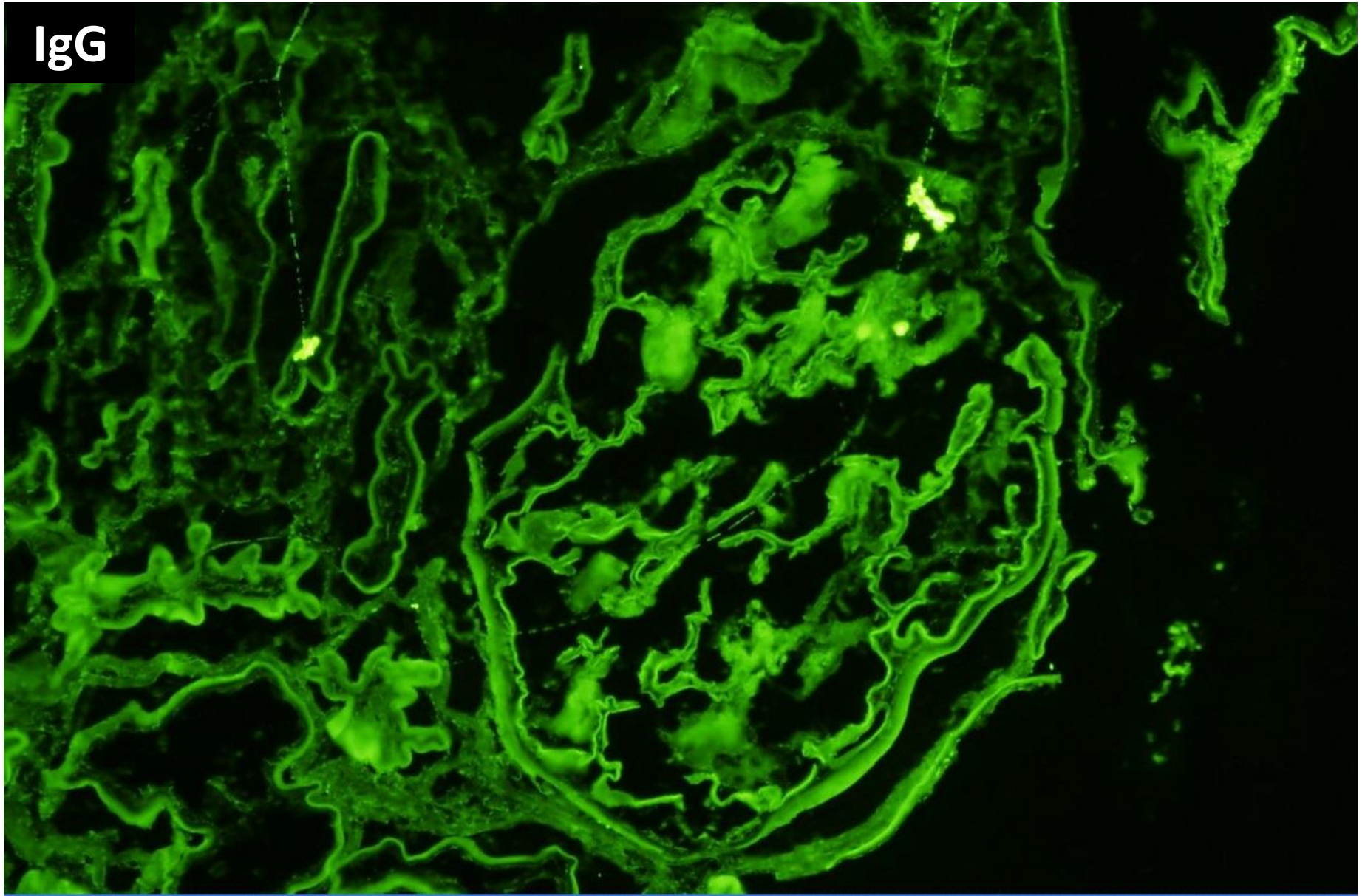
45 year old female with h/o poorly controlled diabetes now presents with shortness of breath and lower limb swelling.
UPCR of 14.09 g/g and 24 hour urine protein of 8.78 g.



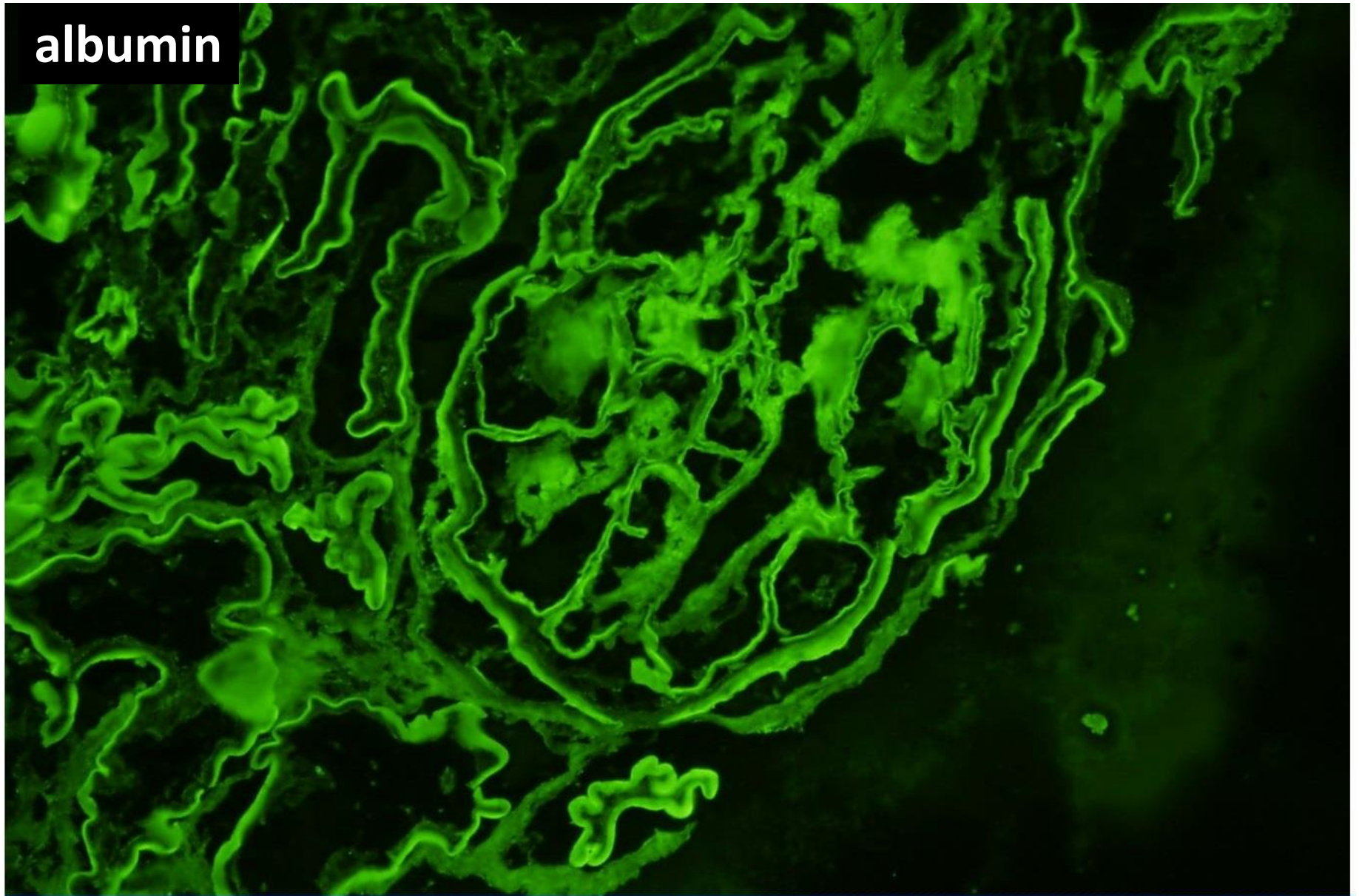




IgG



albumin





RENAL BIOPSY
CLINICOPATHOLOGICAL
WORKSHOP 2018

Electron microscopy not done.



RENAL BIOPSY CLINICOPATHOLOGICAL WORKSHOP 2018



PATHOLOGY



Division of Pathology
Singapore General Hospital



Department of Renal Medicine
Singapore General Hospital



MEDICINE