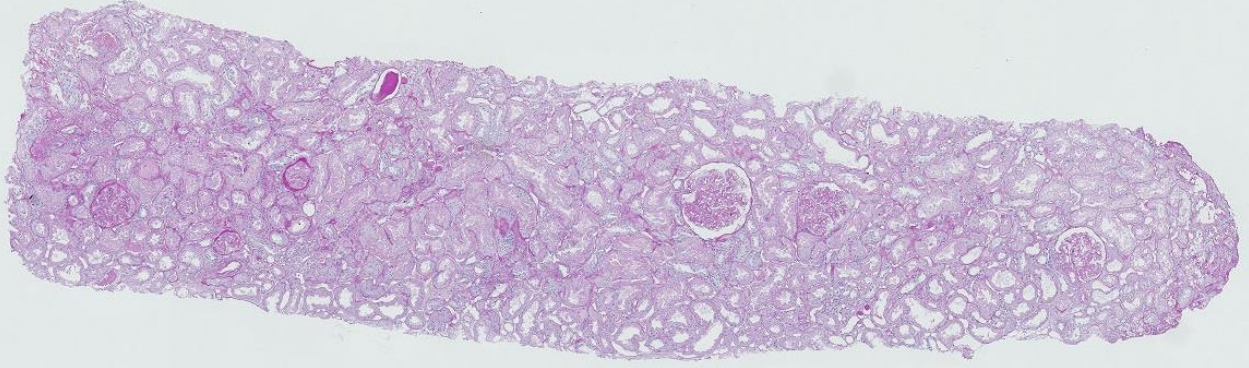
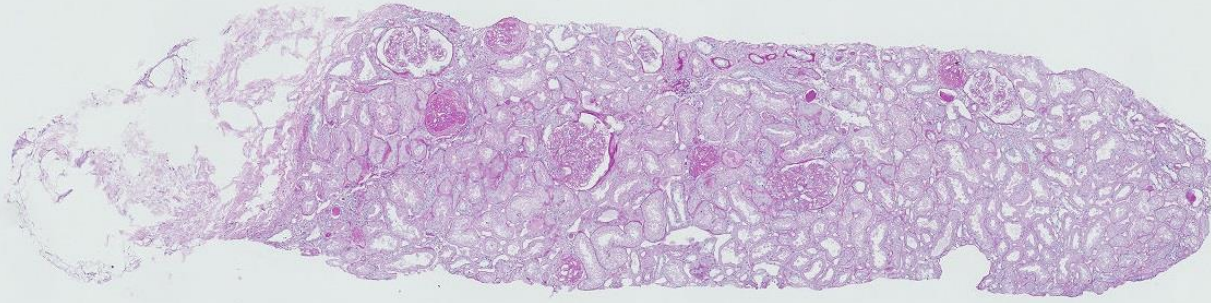
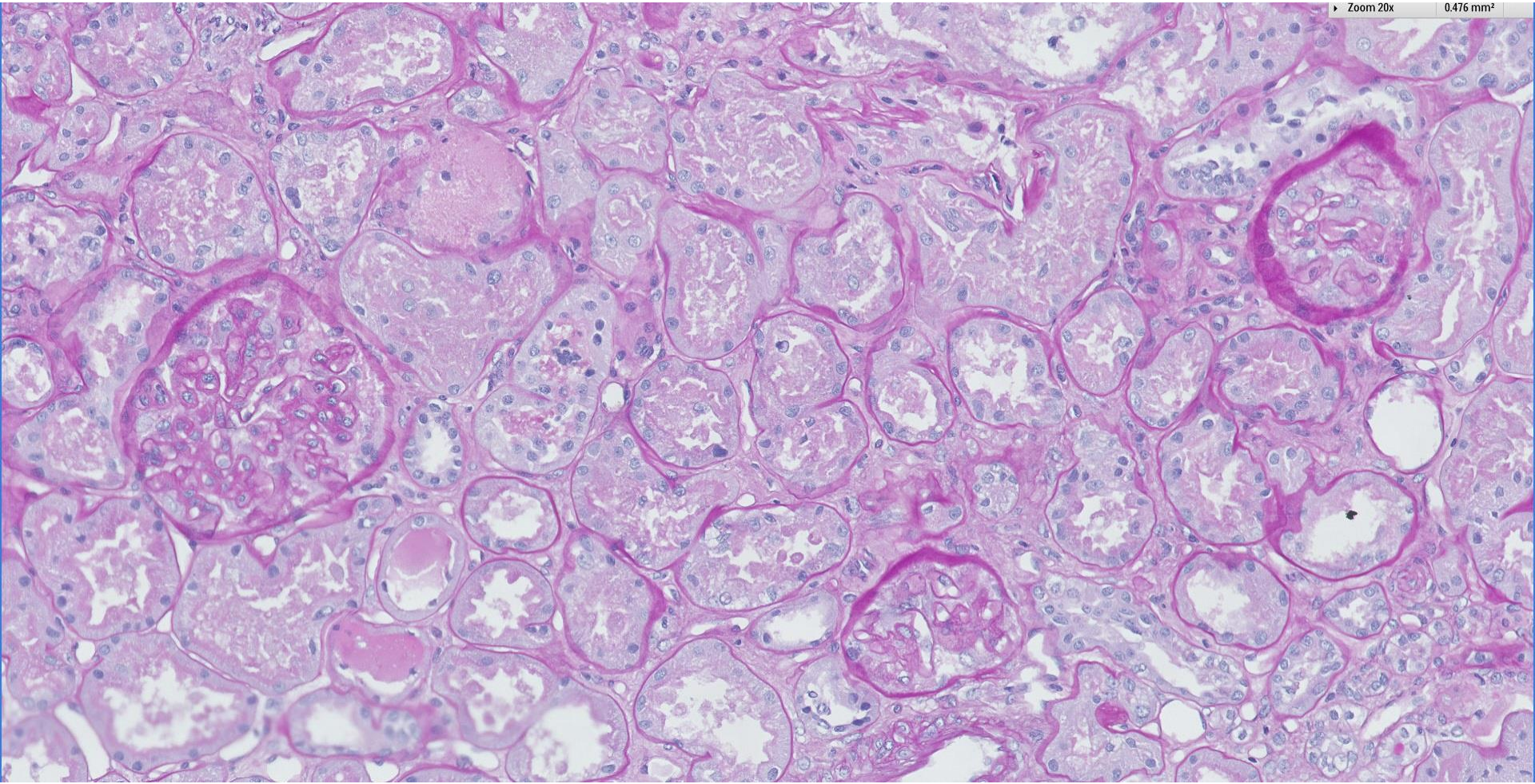
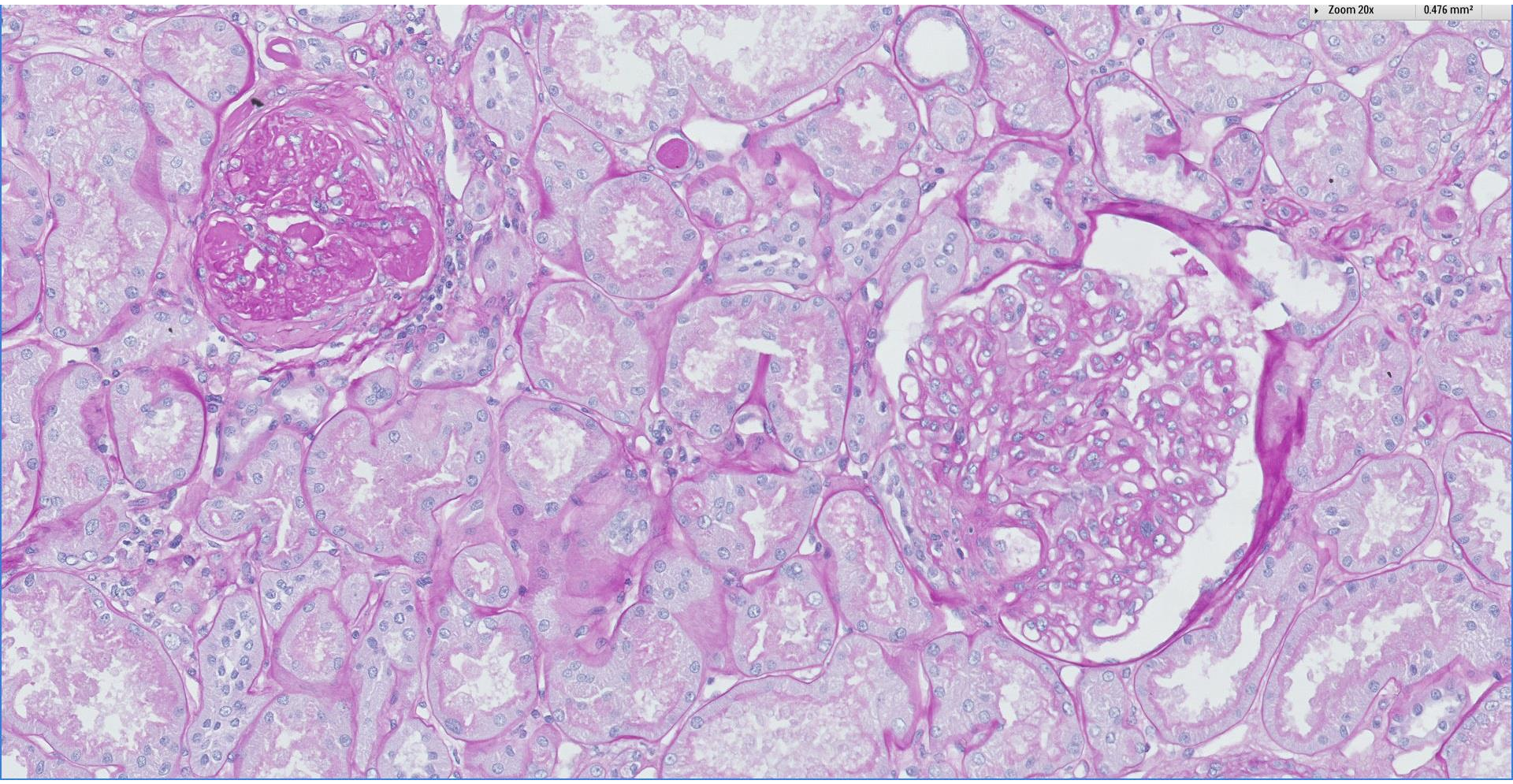


Case 19

71 year old male with previous membranous glomerulonephritis treated with cyclosporine and prednisolone 8 years ago now presents with worsening proteinuria.

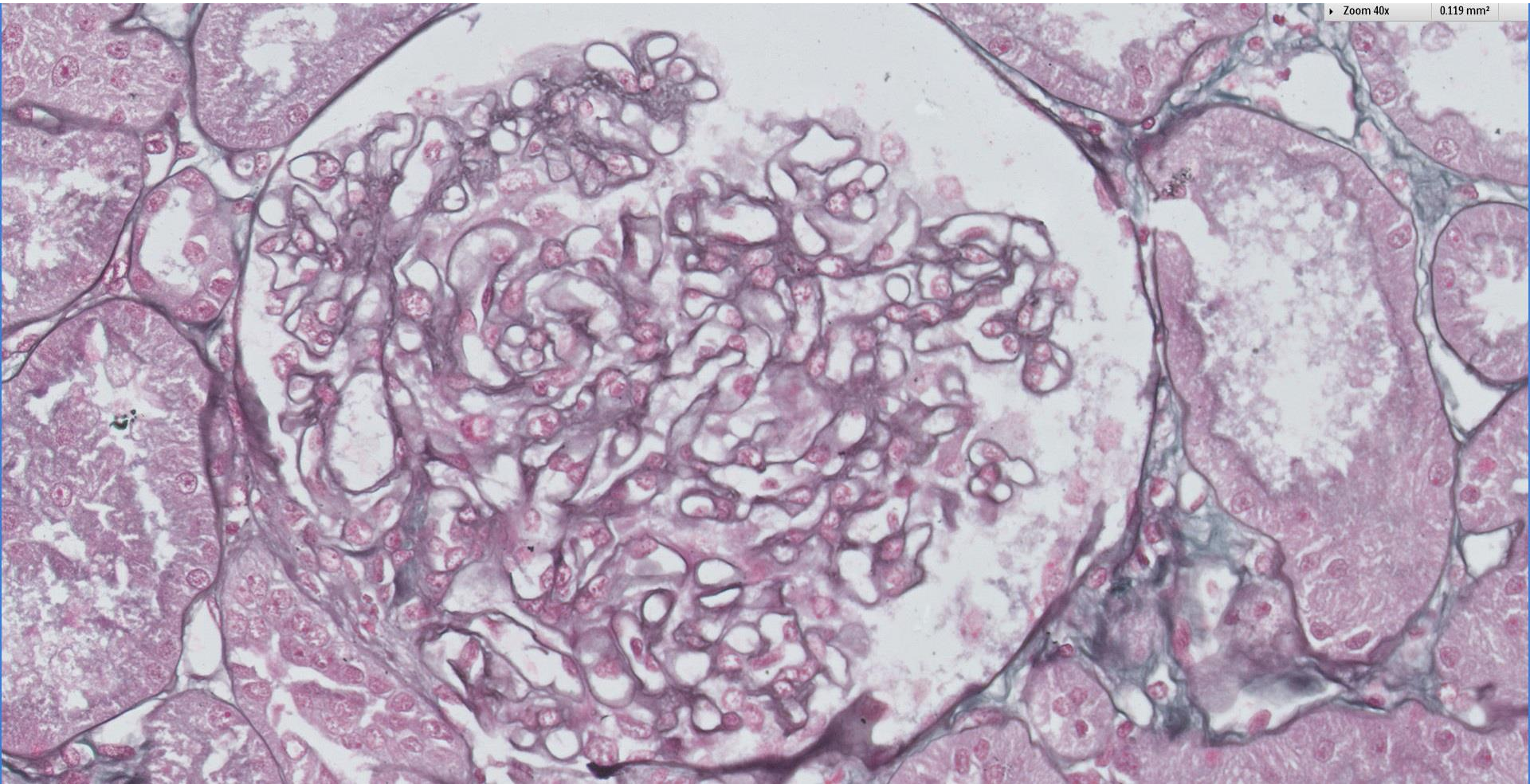




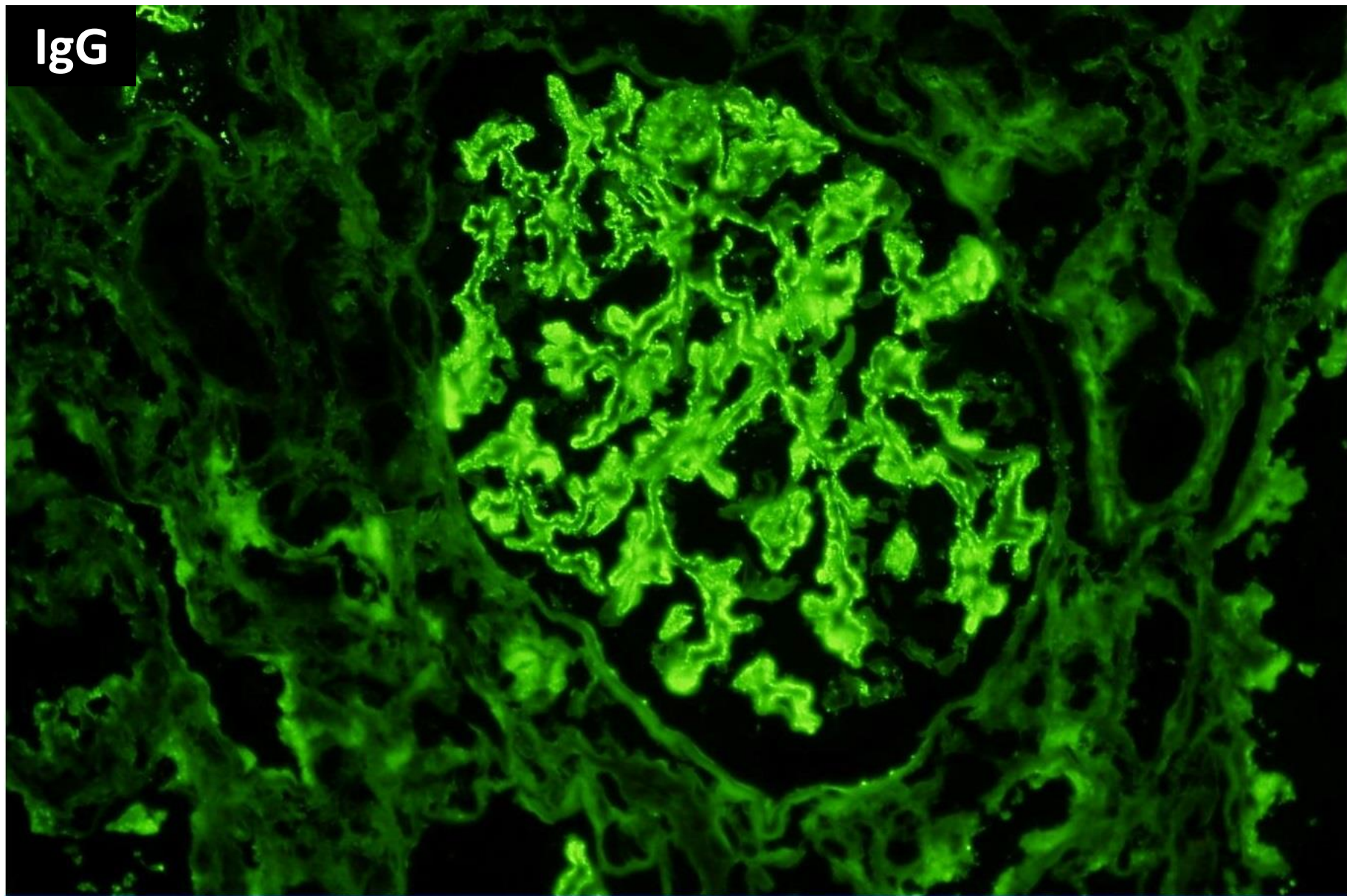


Zoom 40x

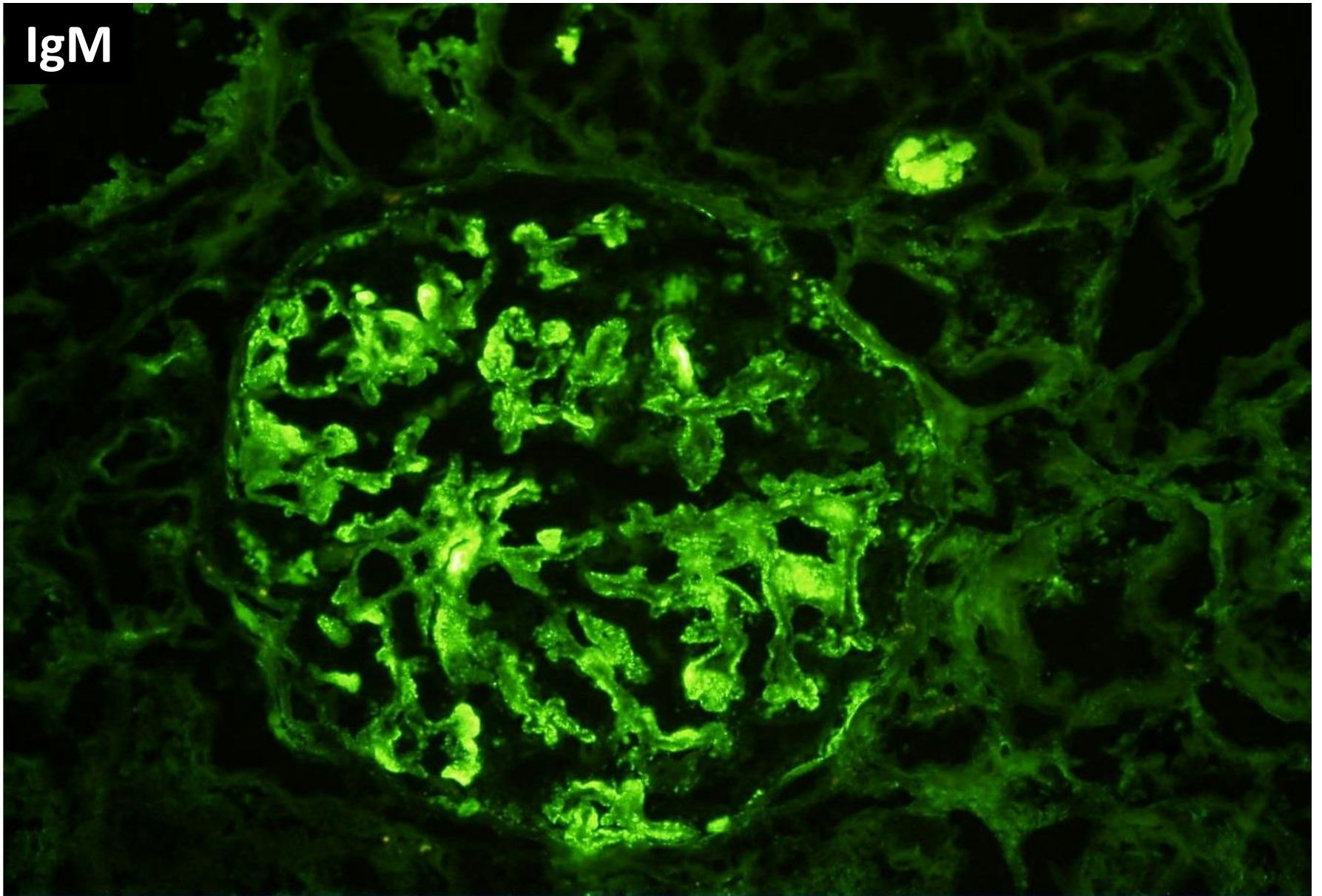
0.119 mm²



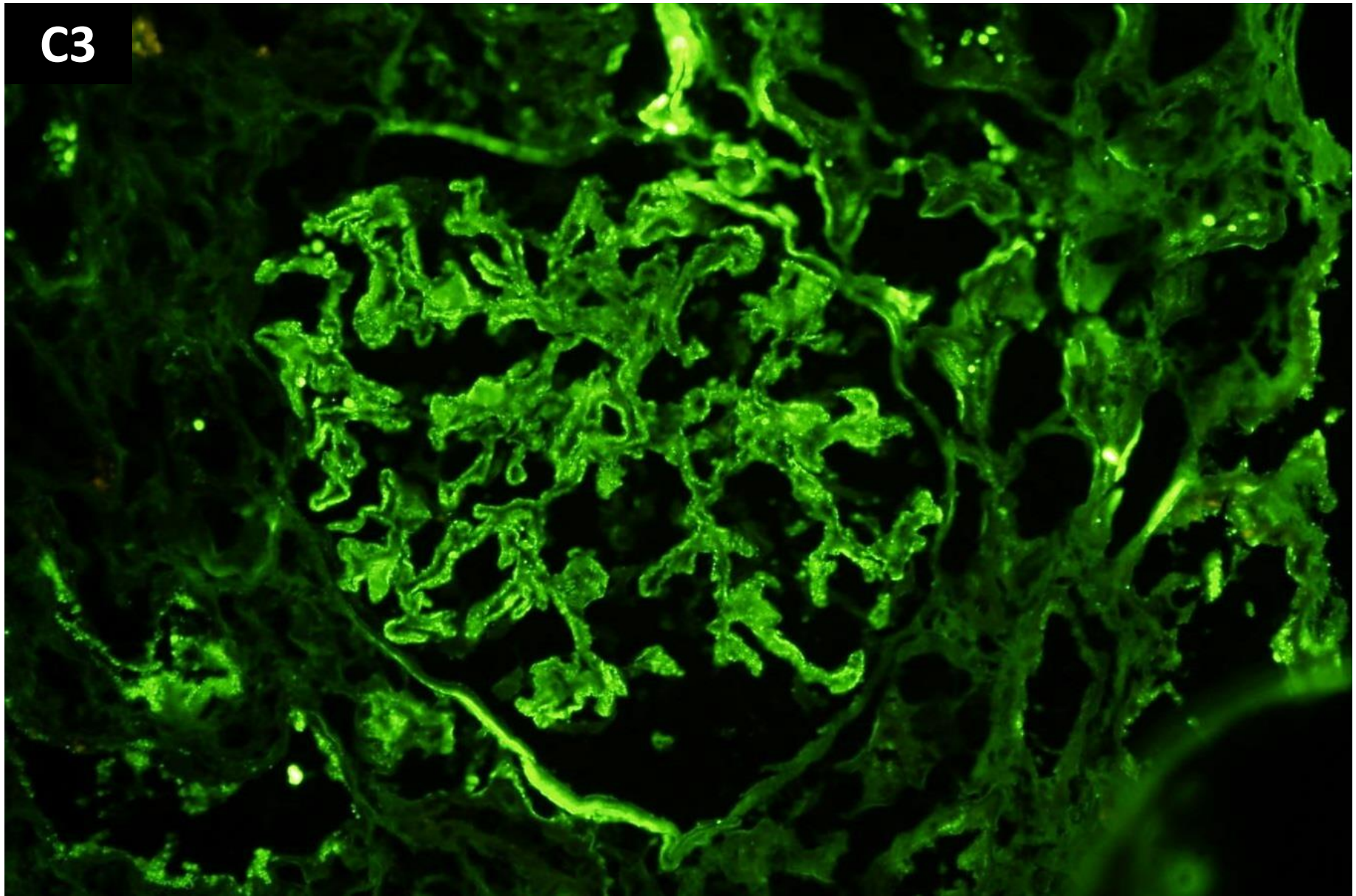
IgG



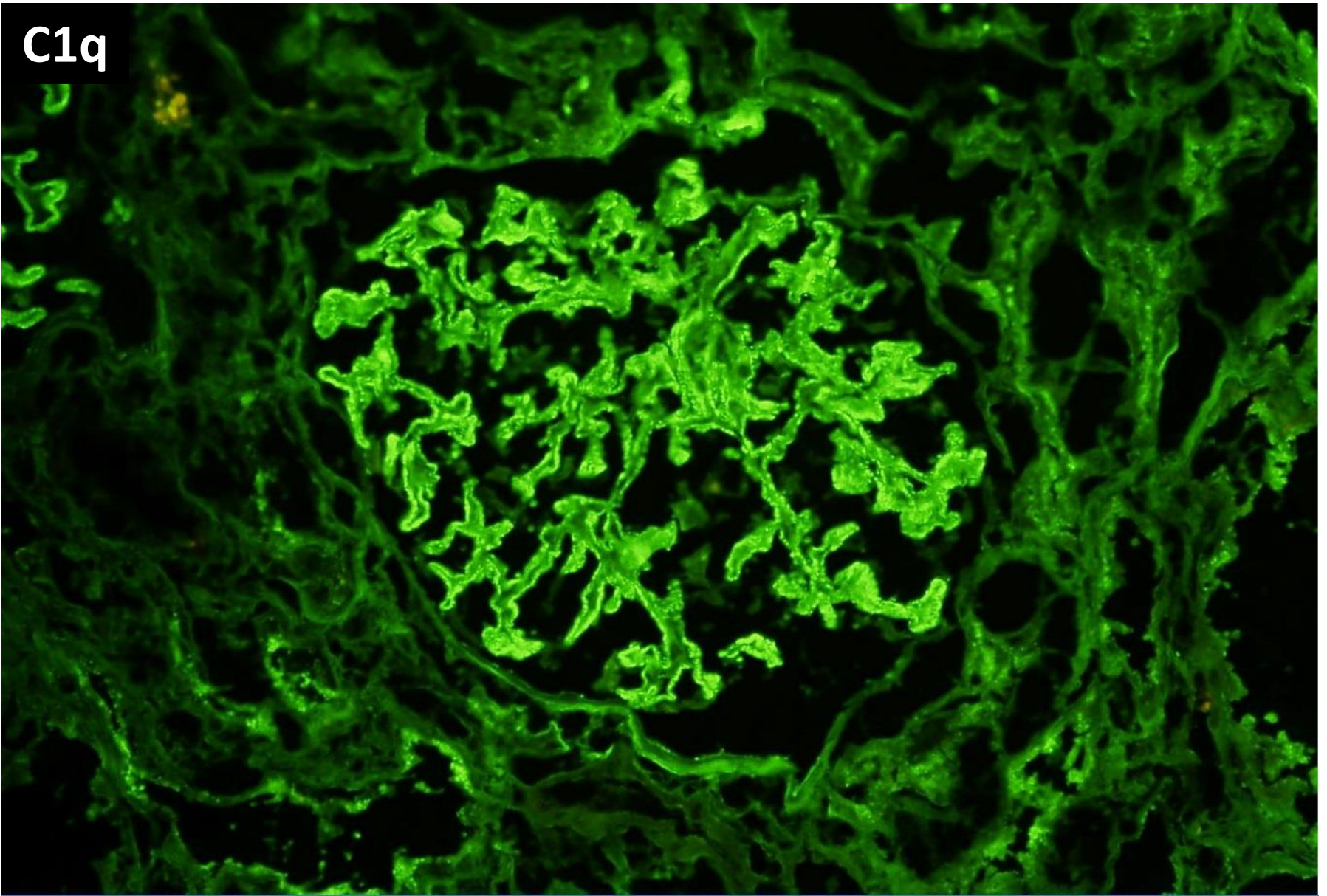
IgM



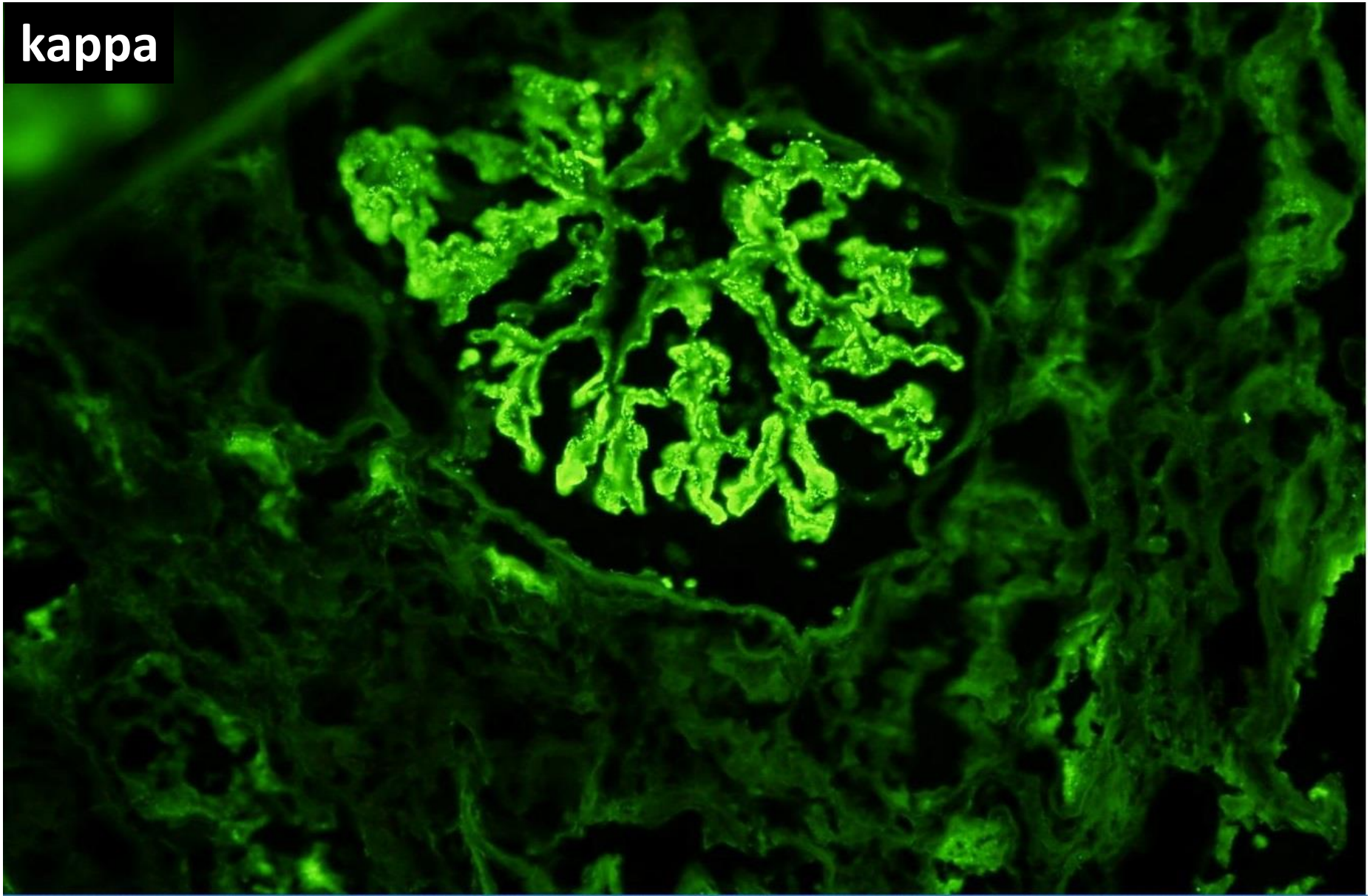
C3



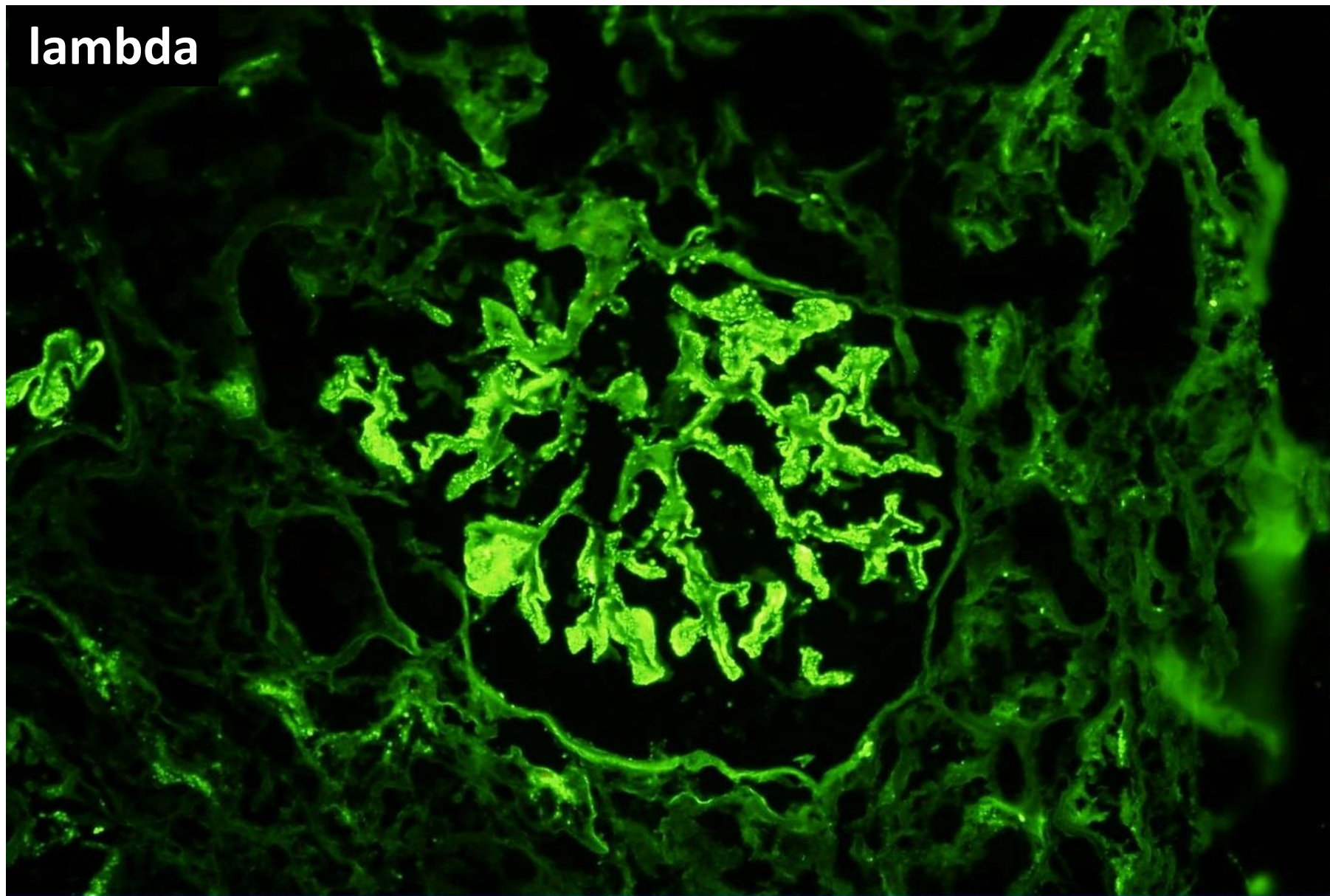
C1q



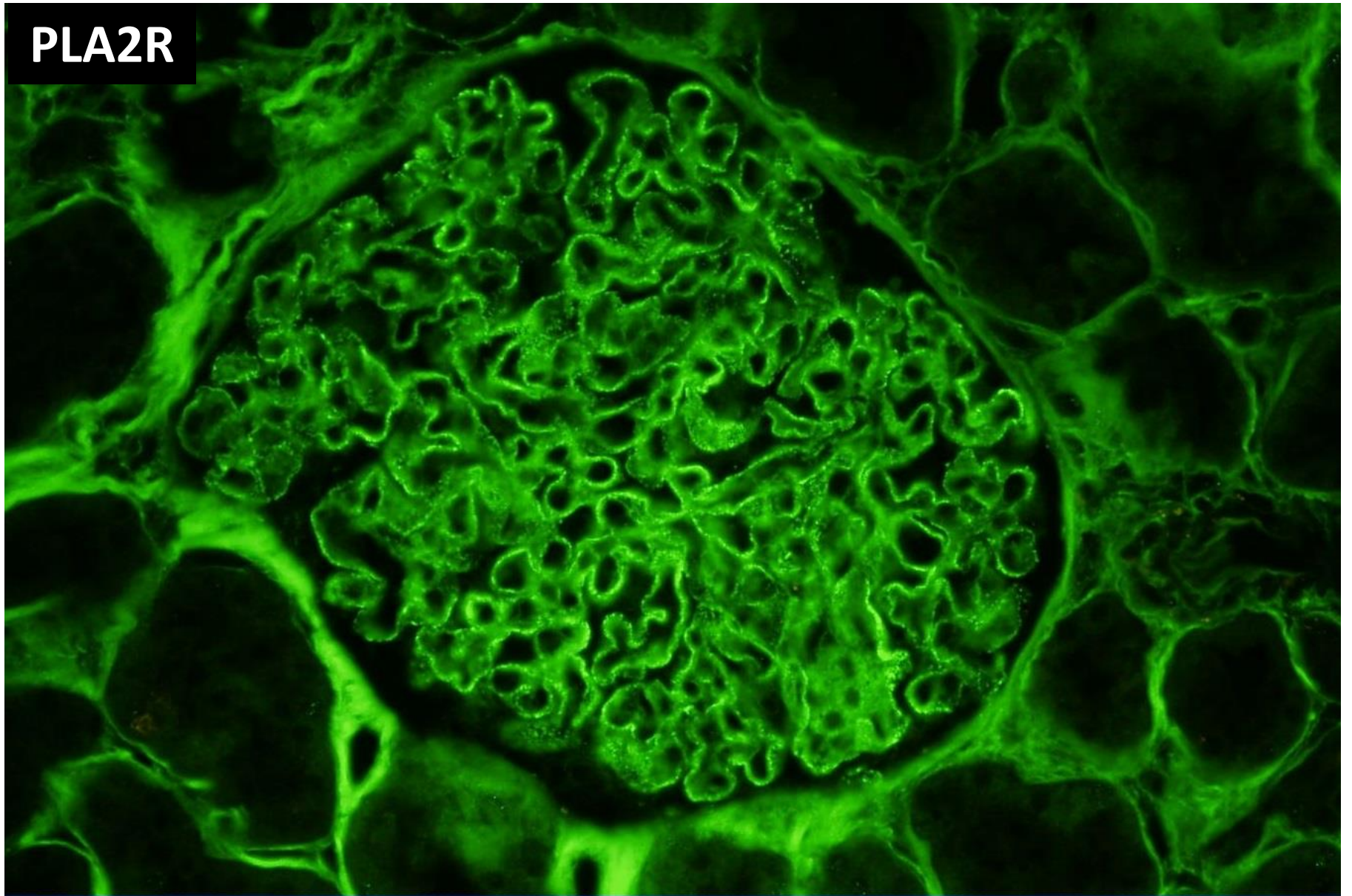
kappa



lambda



PLA2R





RENAL BIOPSY
CLINICOPATHOLOGICAL
WORKSHOP 2018

Electron microscopy not done.



RENAL BIOPSY CLINICOPATHOLOGICAL WORKSHOP 2018



PATHOLOGY



Division of Pathology
Singapore General Hospital



Department of Renal Medicine
Singapore General Hospital



MEDICINE