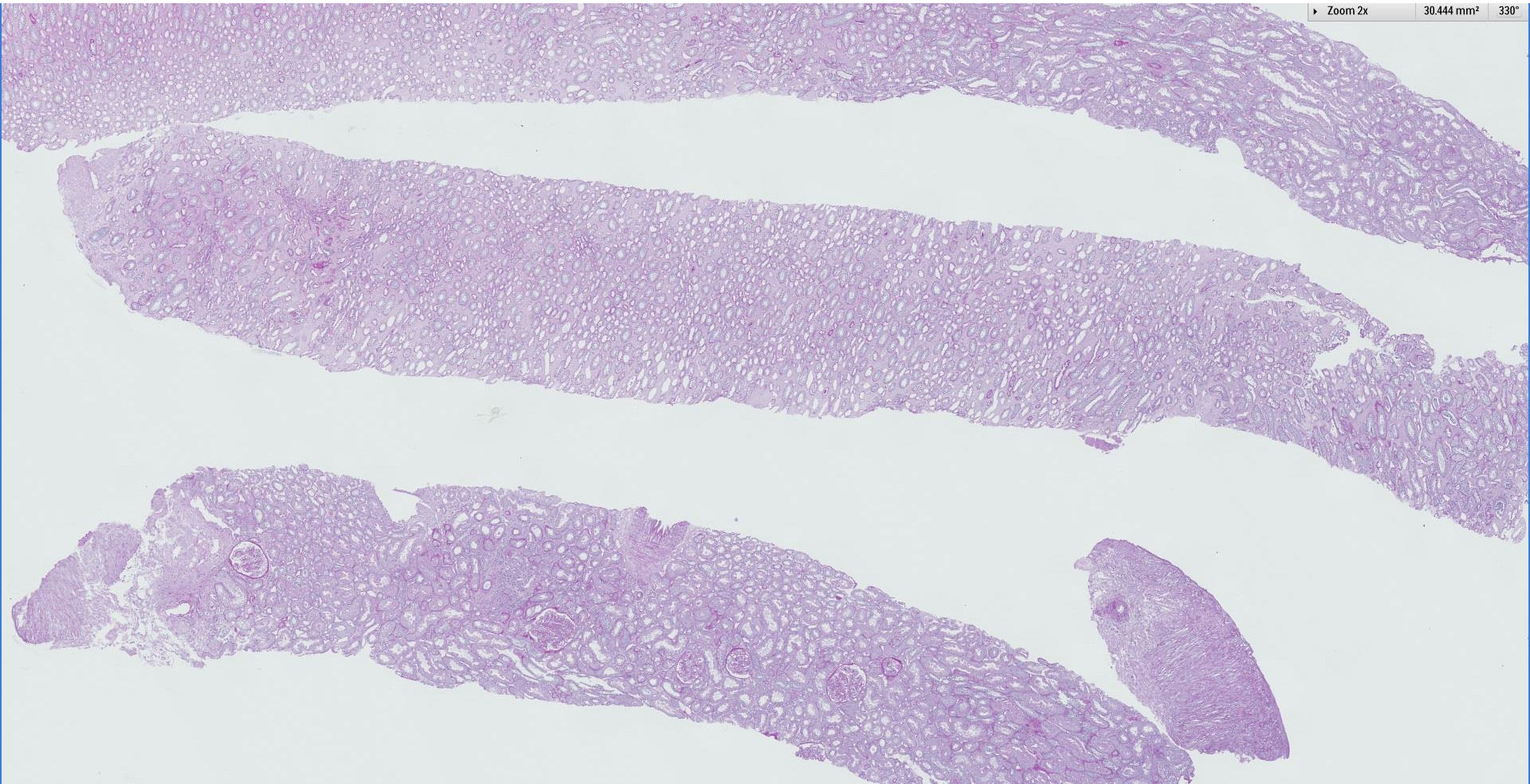
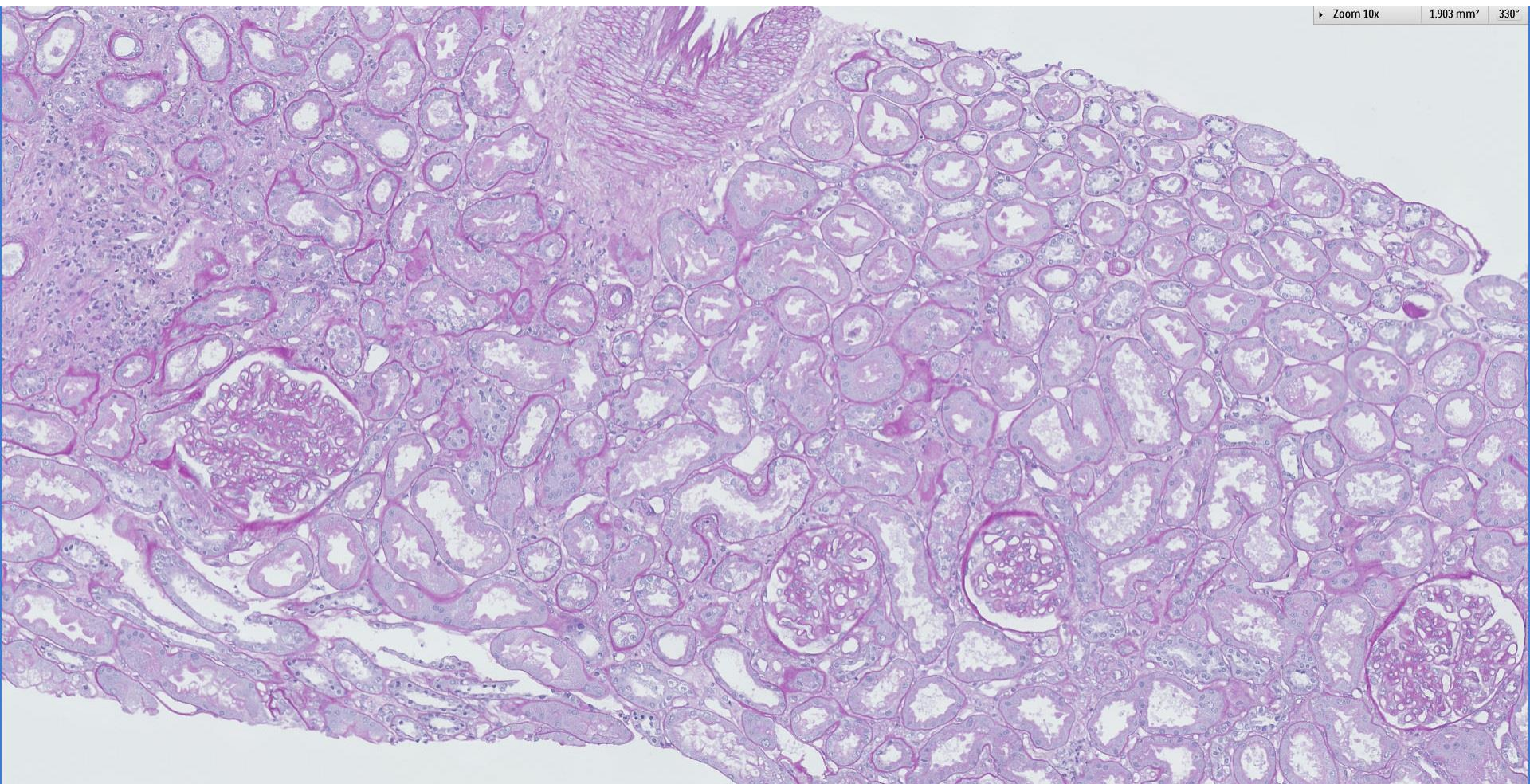
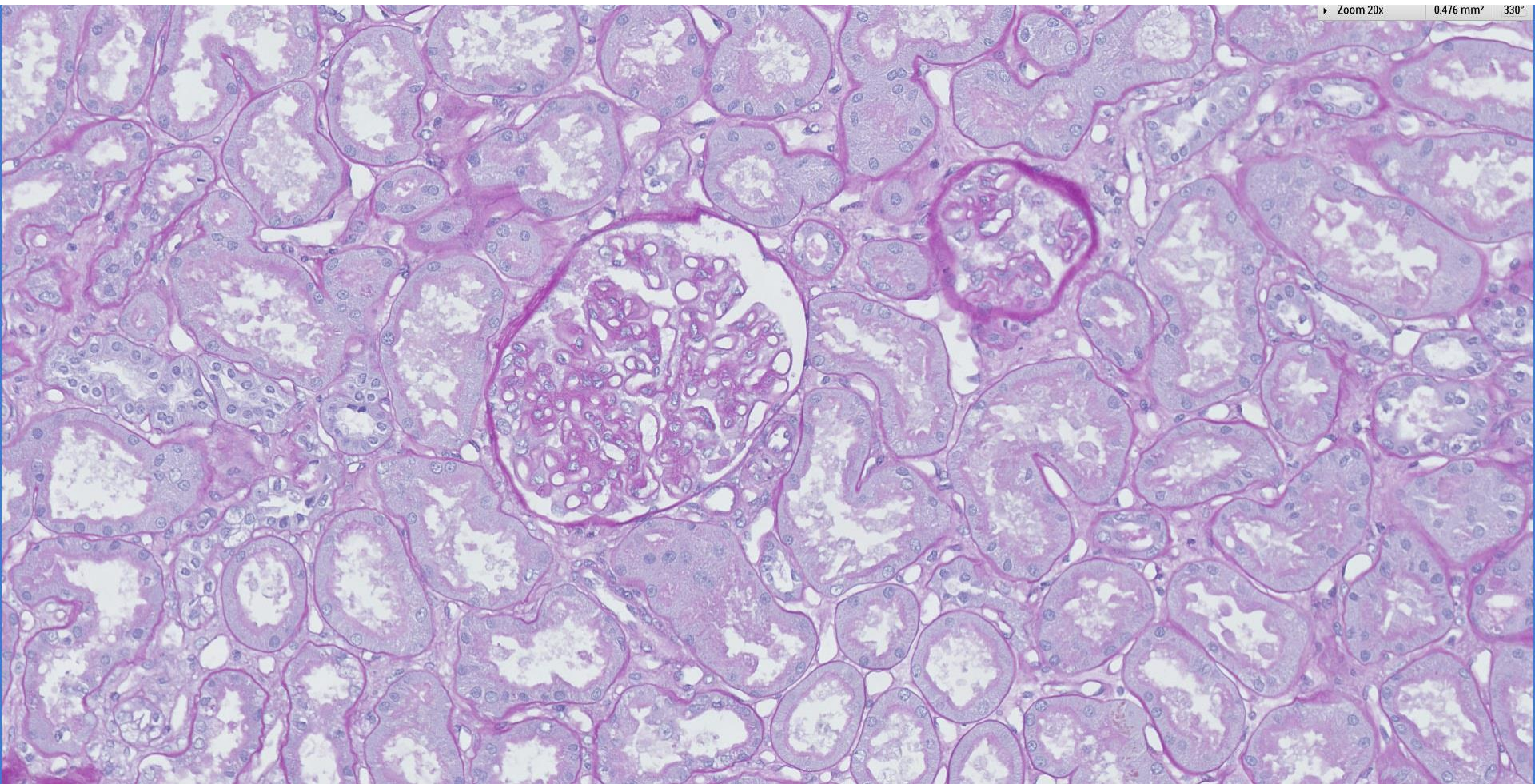


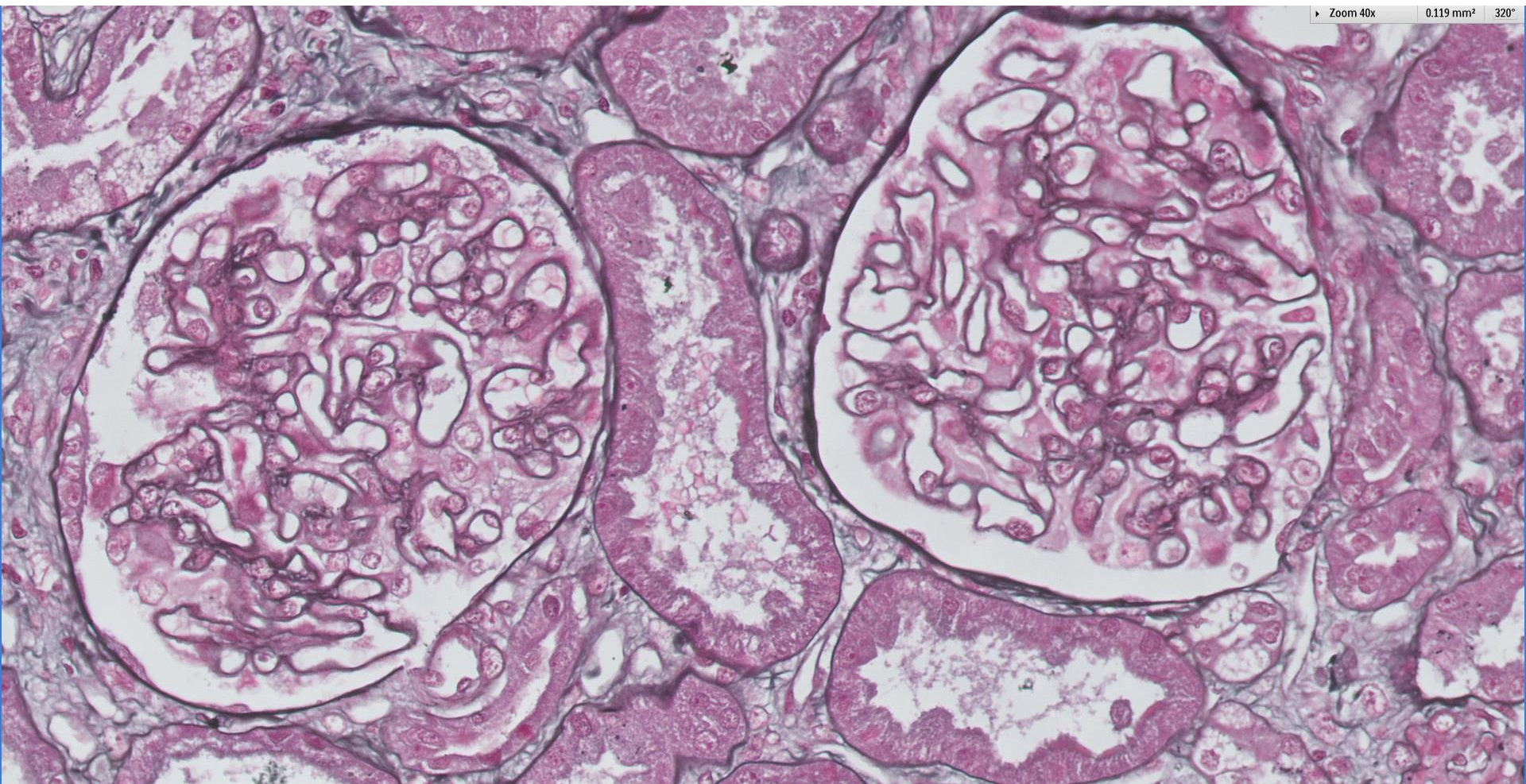
Case 18

50 year old male with nephrotic syndrome and glomerular haematuria.

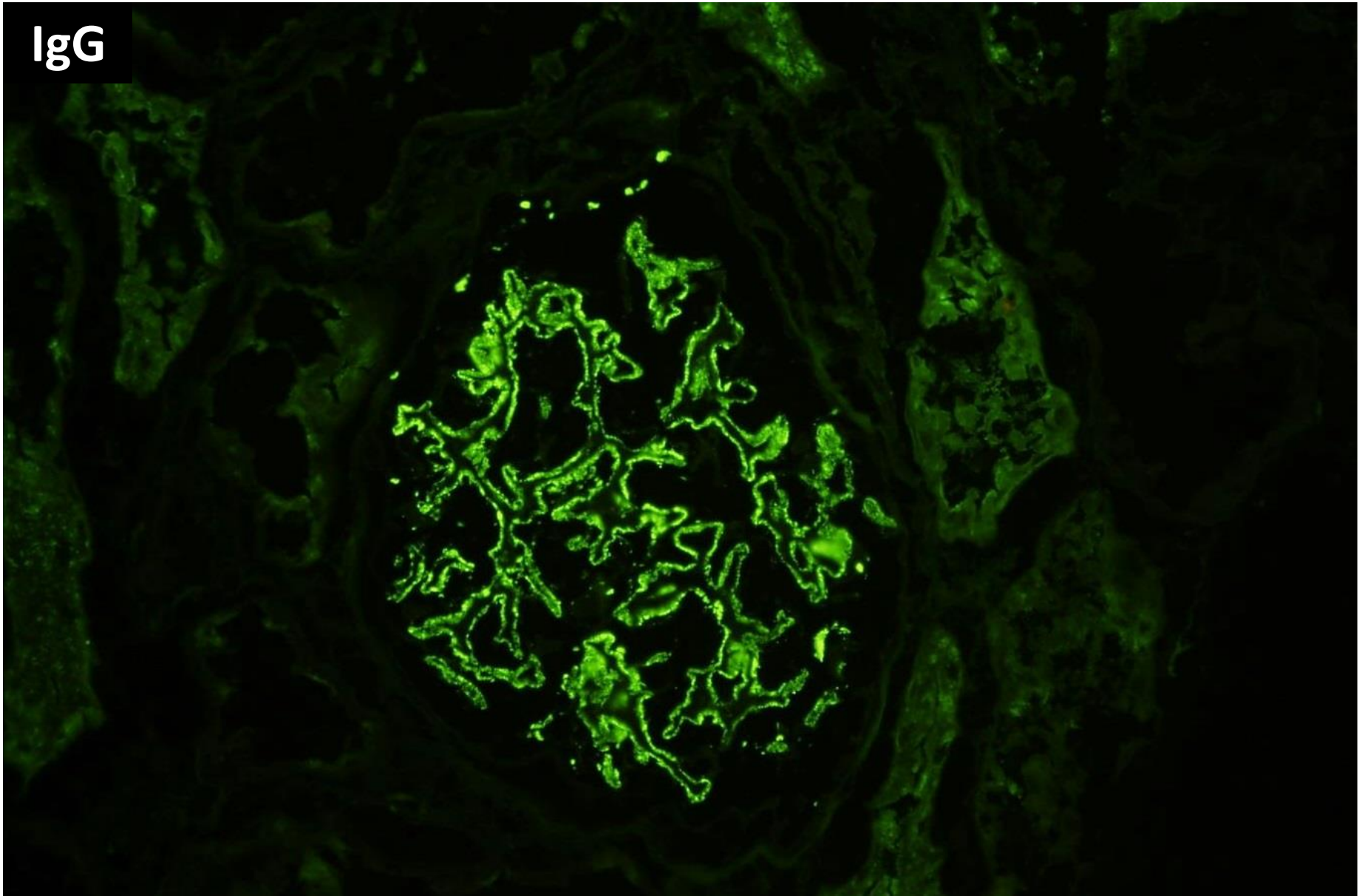




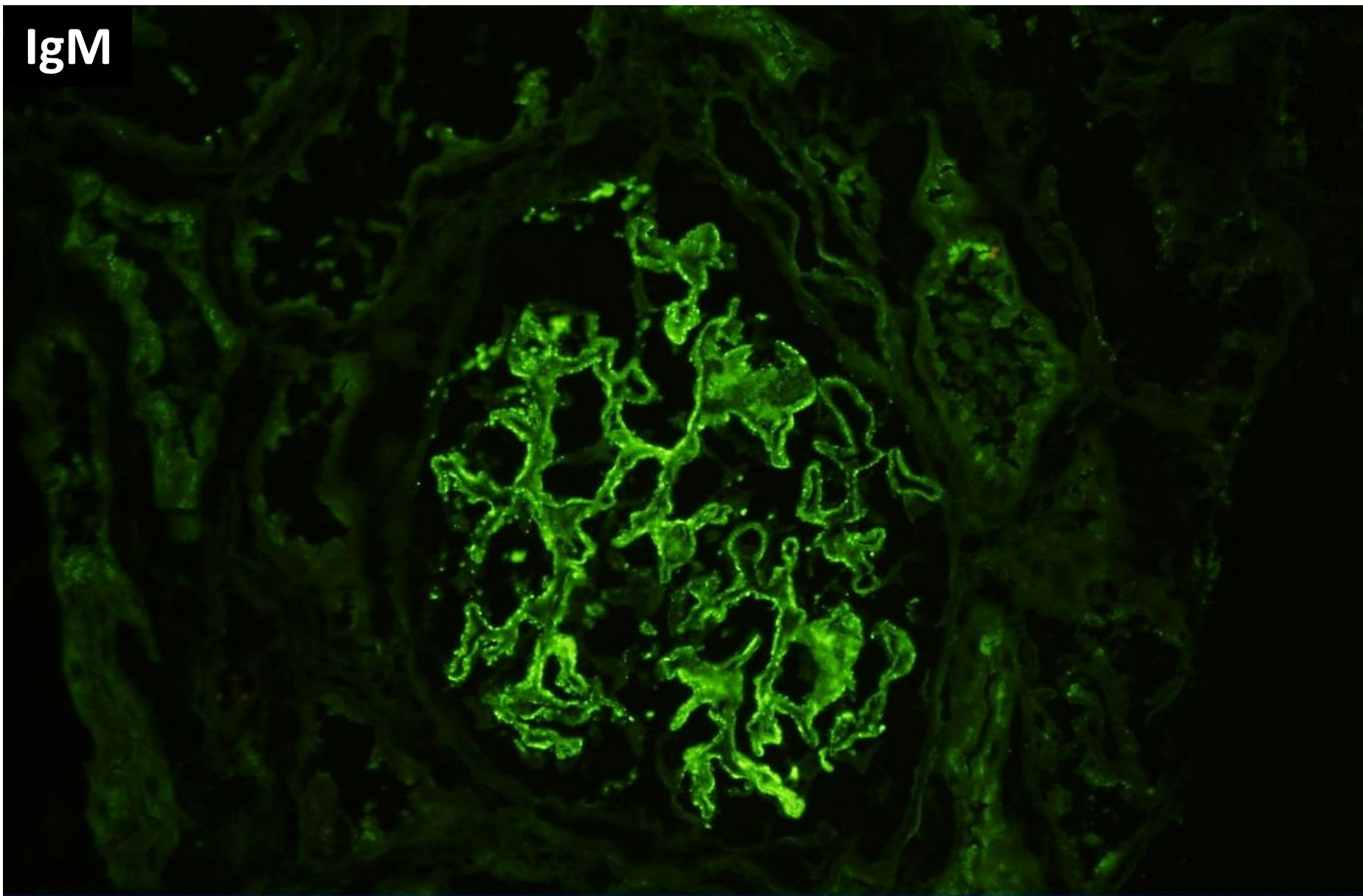




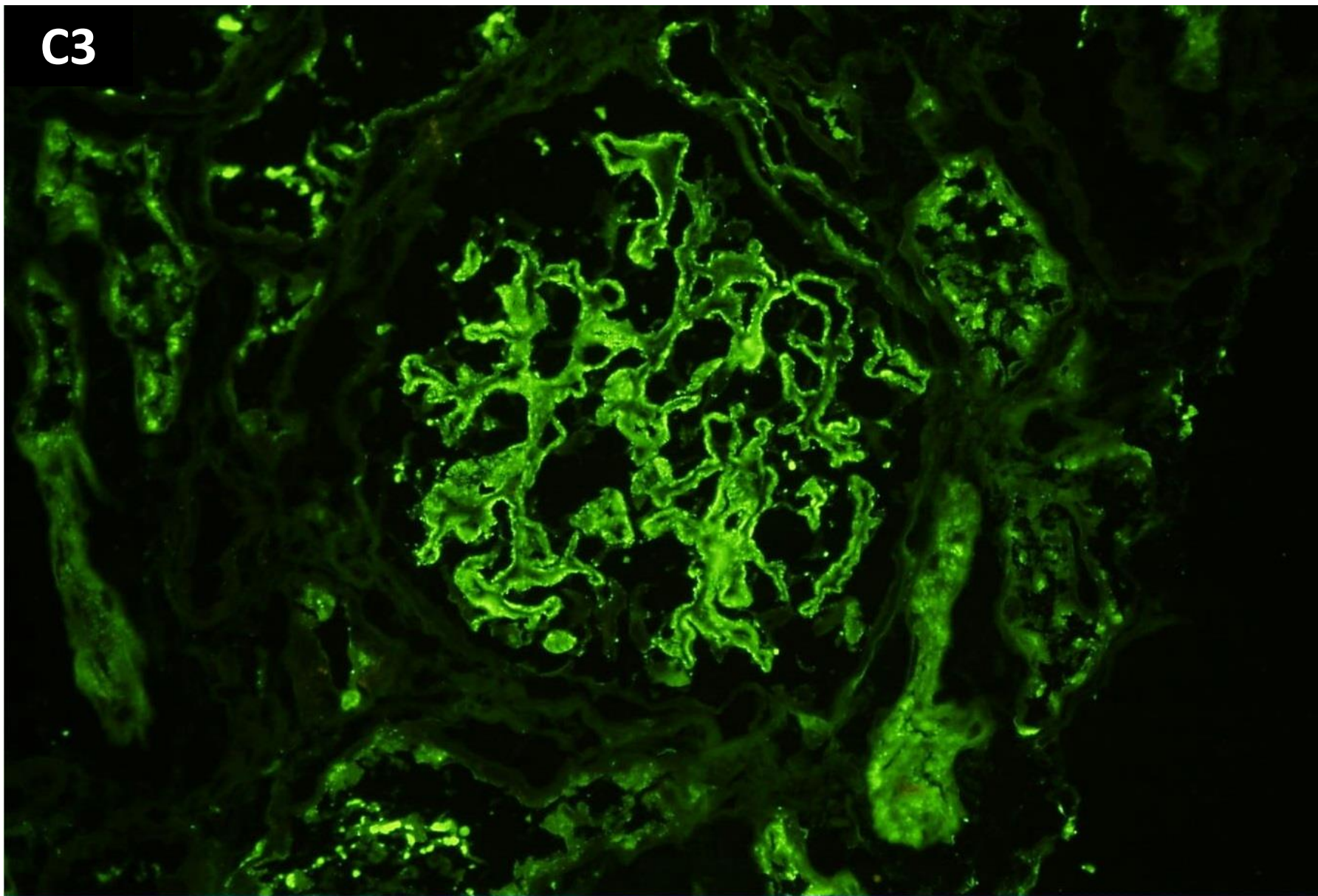
IgG



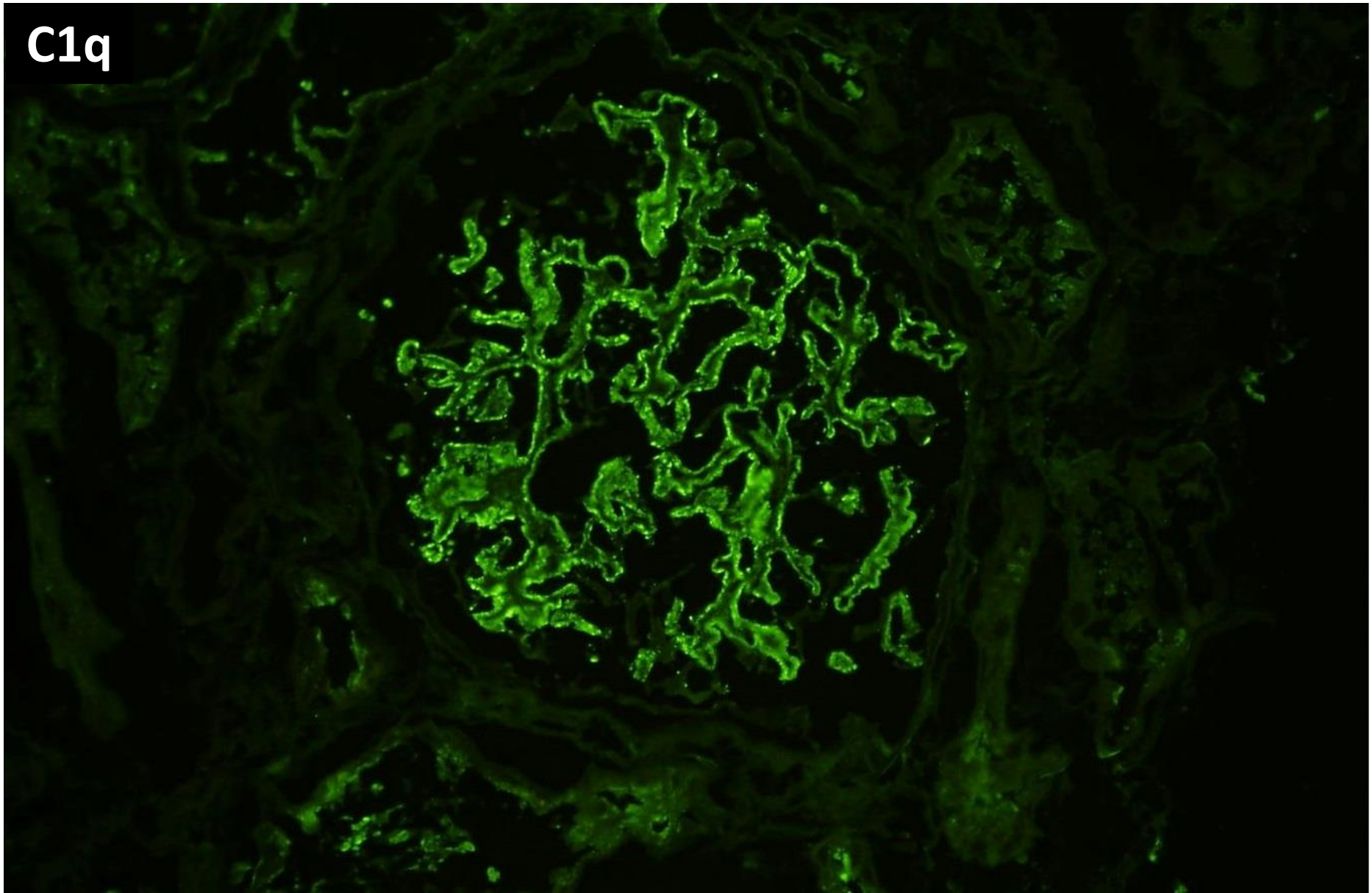
IgM



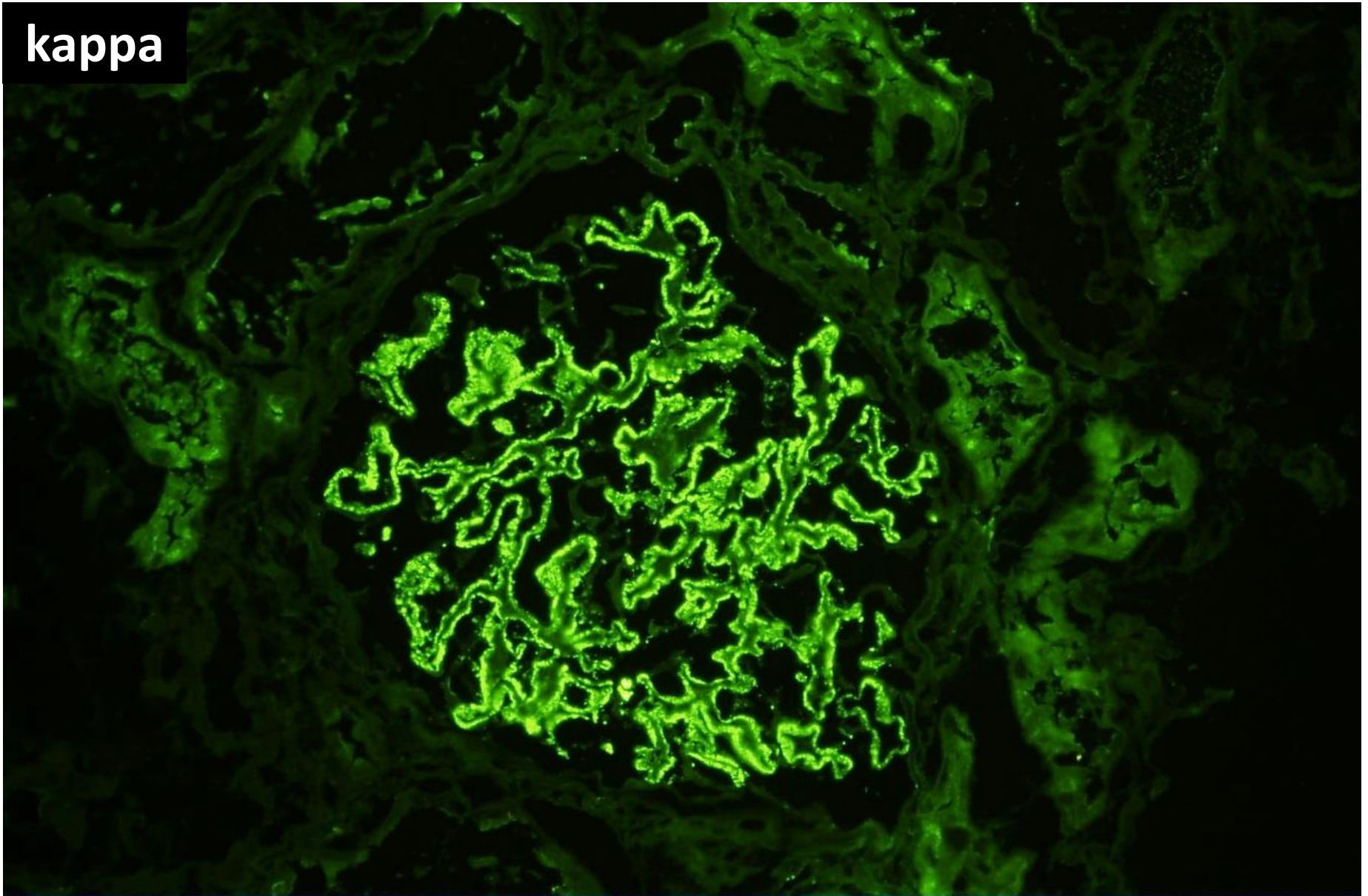
C3



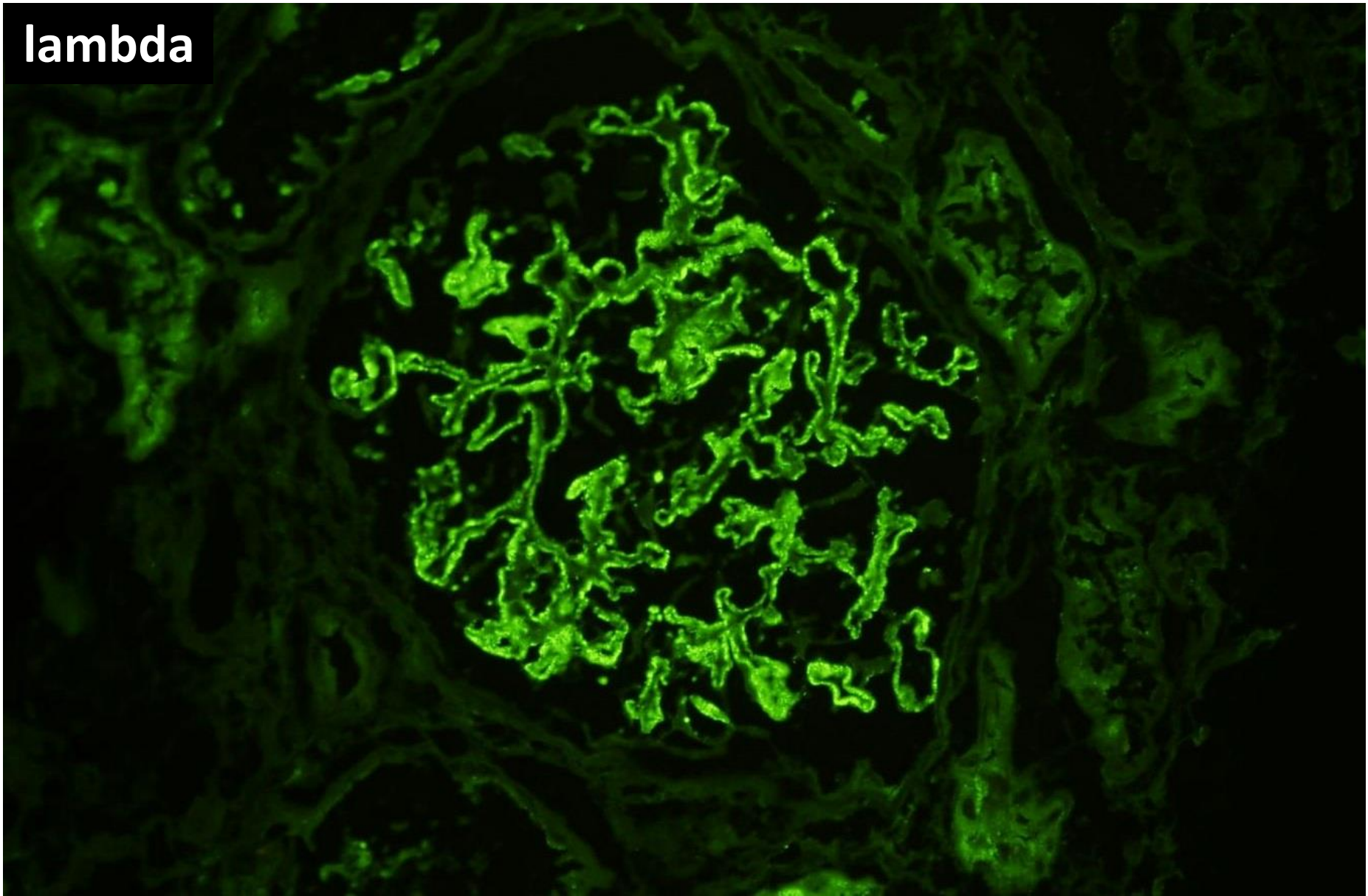
C1q



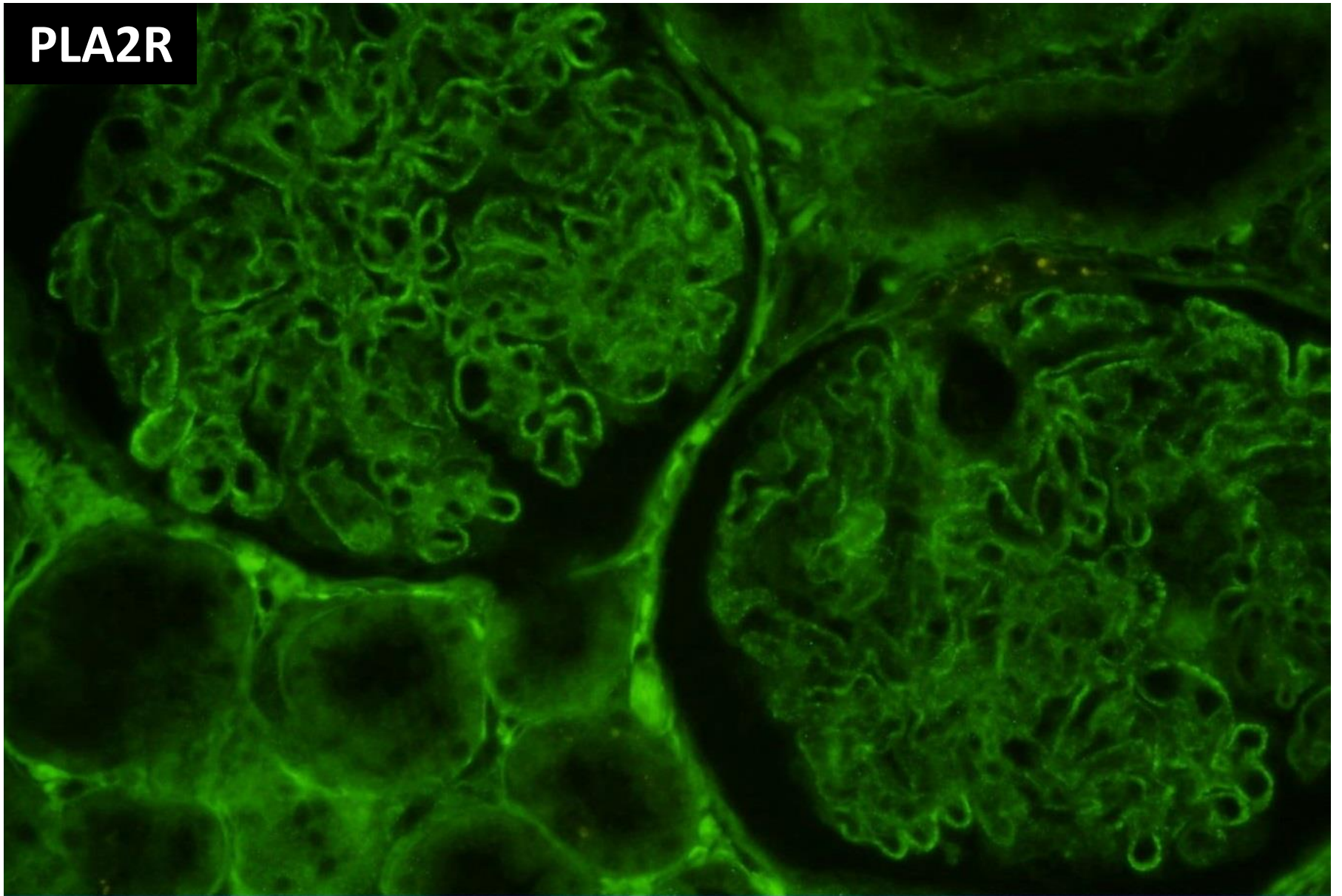
kappa



lambda



PLA2R





RENAL BIOPSY
CLINICOPATHOLOGICAL
WORKSHOP 2018

Electron microscopy not done.



RENAL BIOPSY CLINICOPATHOLOGICAL WORKSHOP 2018



PATHOLOGY



Division of Pathology
Singapore General Hospital



Department of Renal Medicine
Singapore General Hospital



MEDICINE