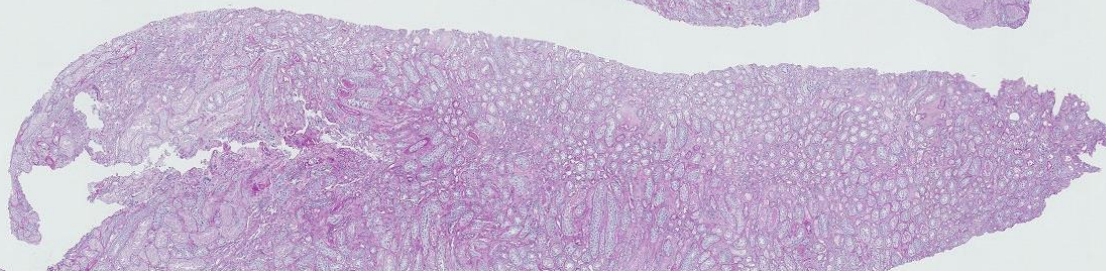
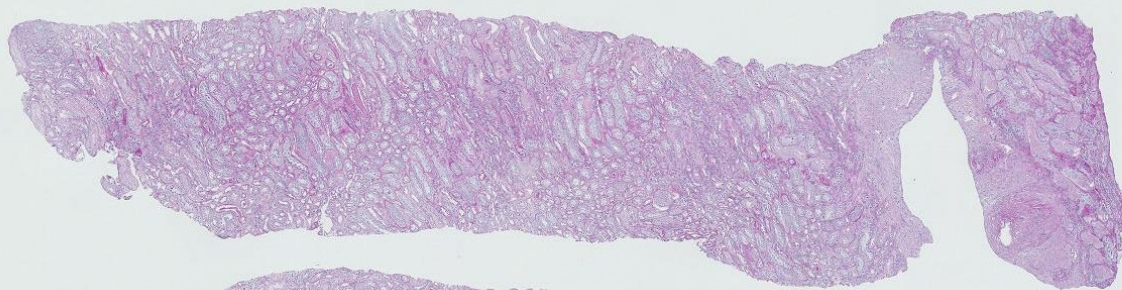
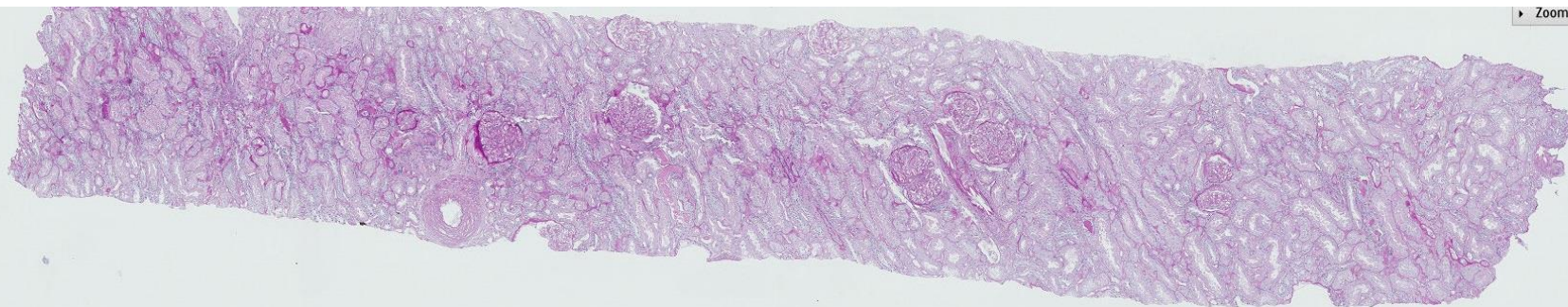
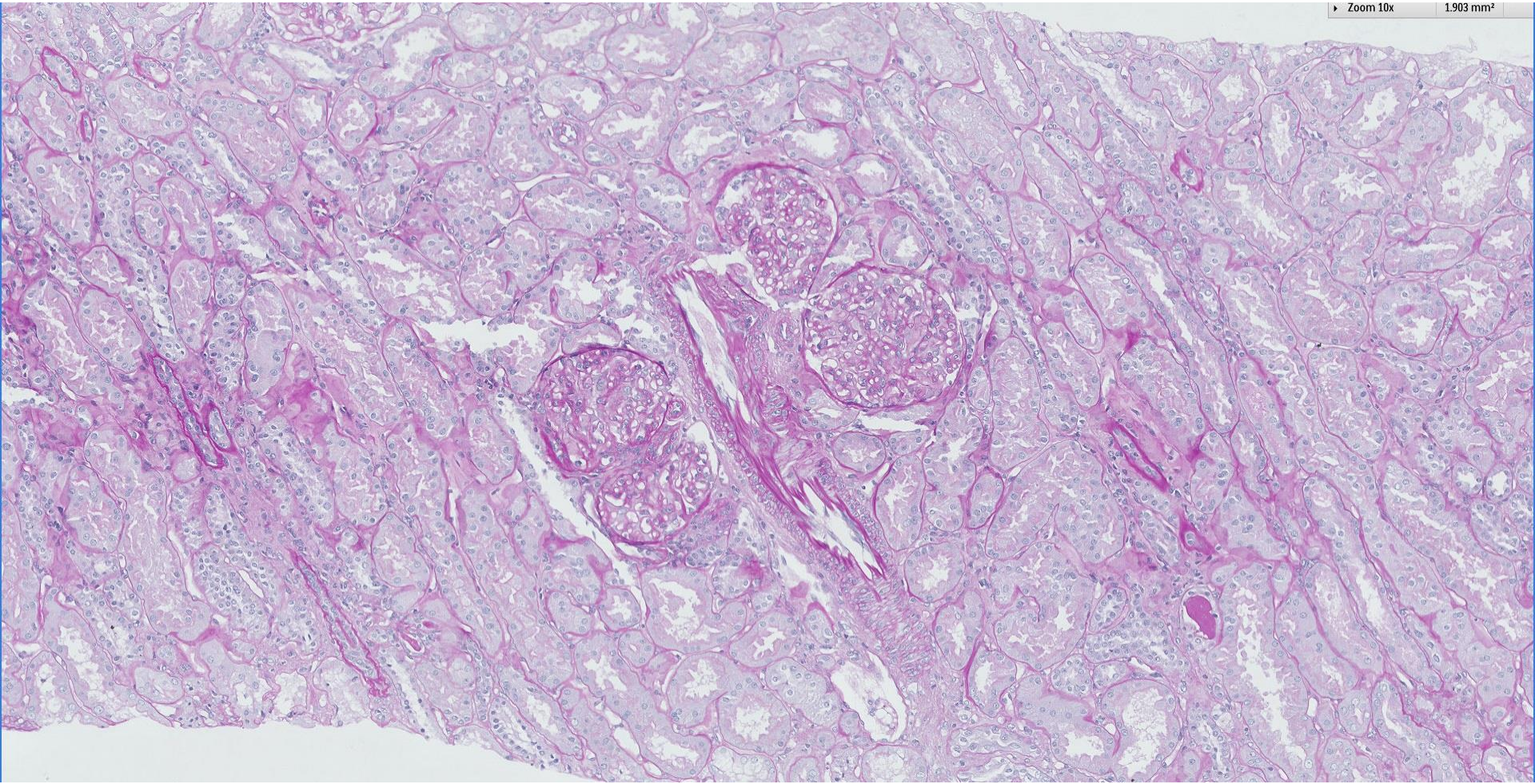


## Case 17

55 year old non-diabetic female with nephrotic syndrome  
and glomerular haematuria.



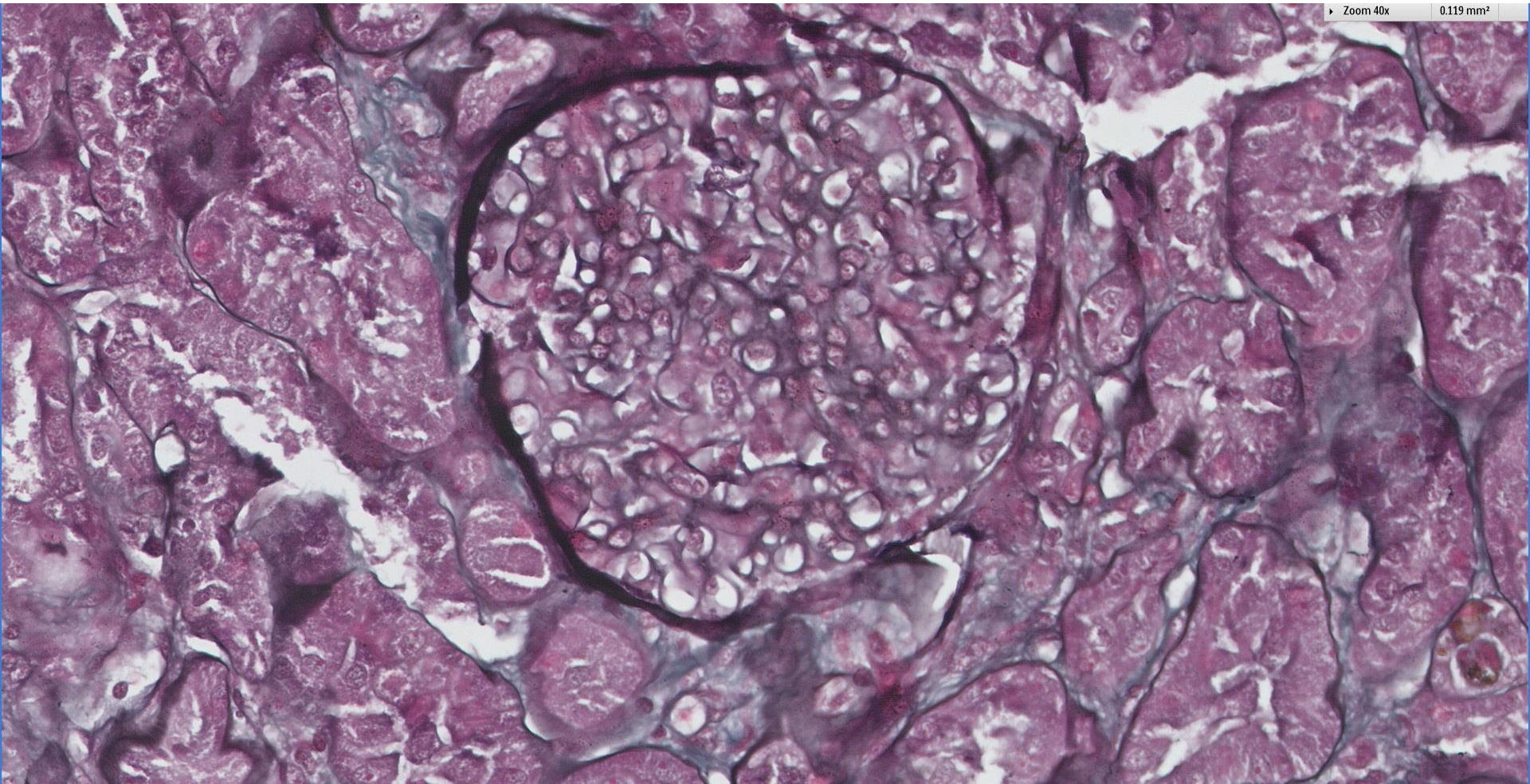




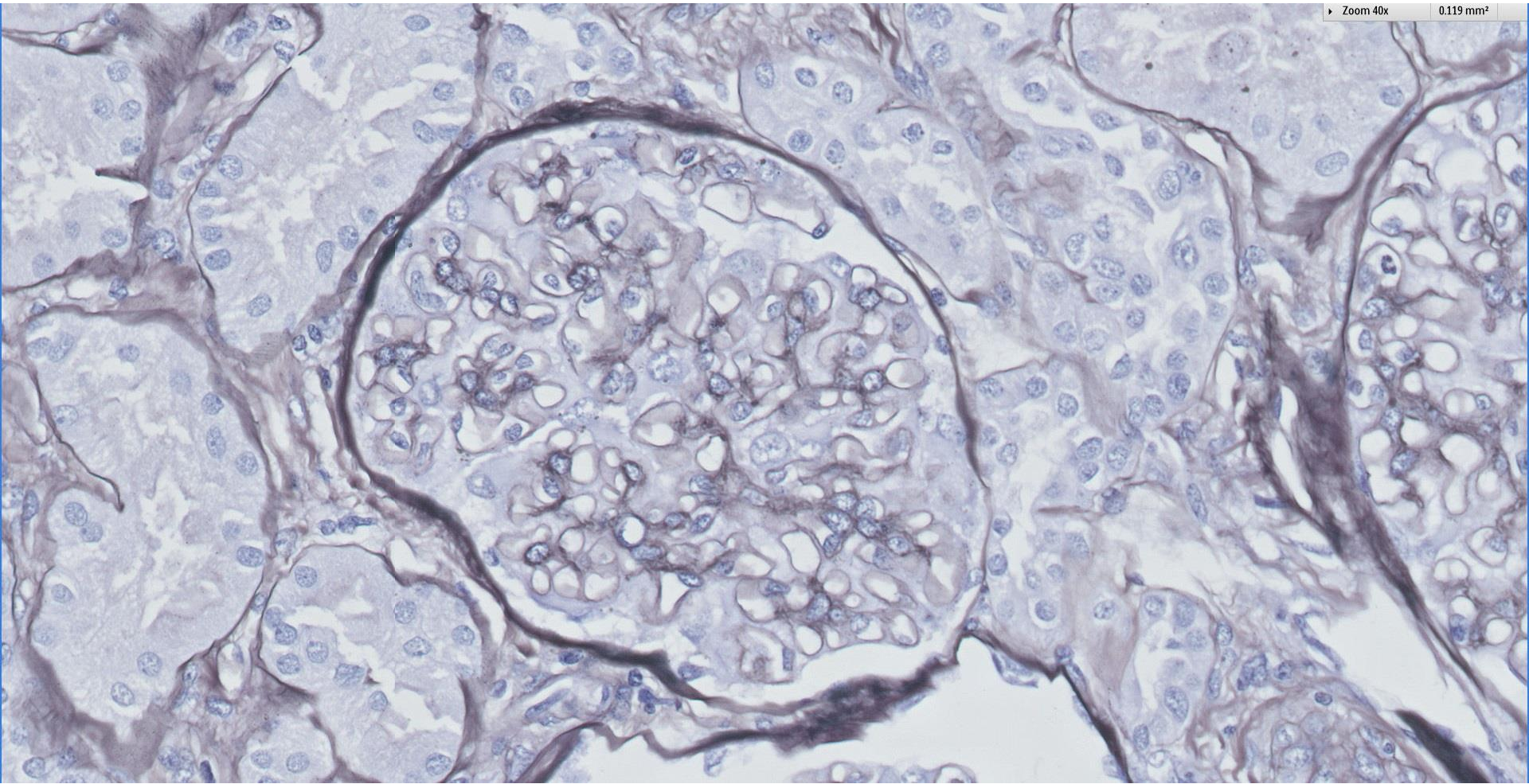


Zoom 40x

0.119 mm<sup>2</sup>

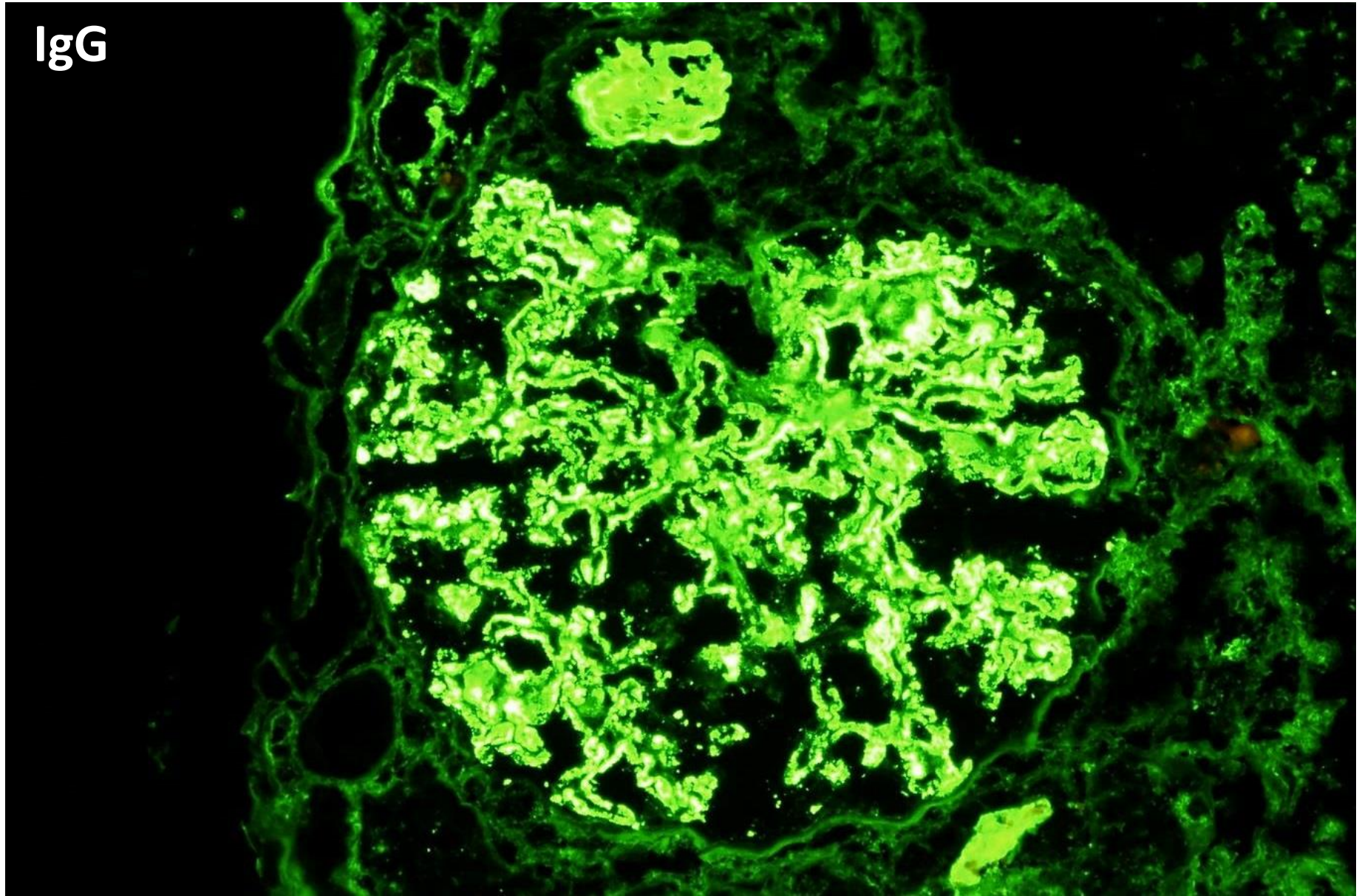




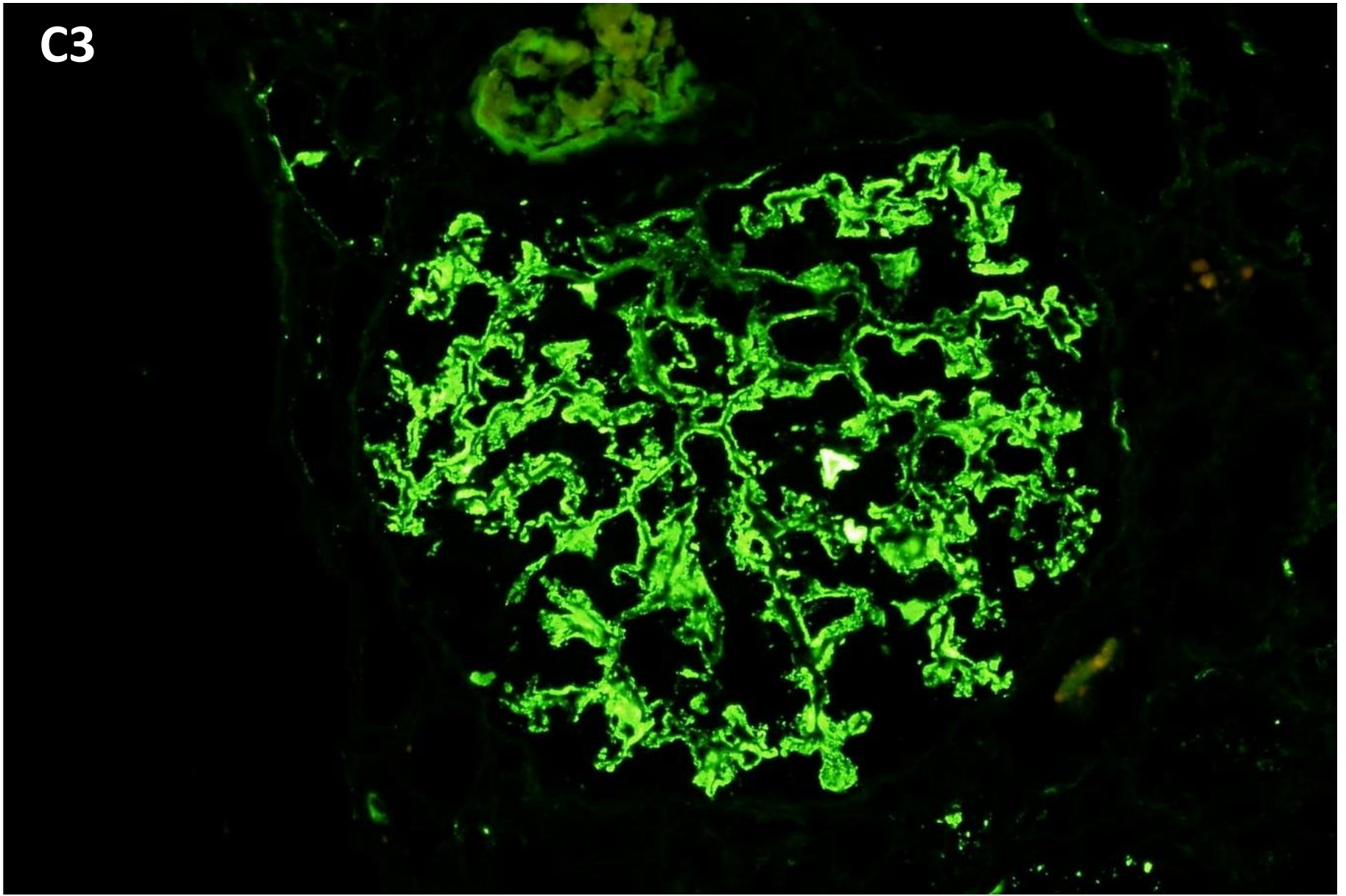




IgG

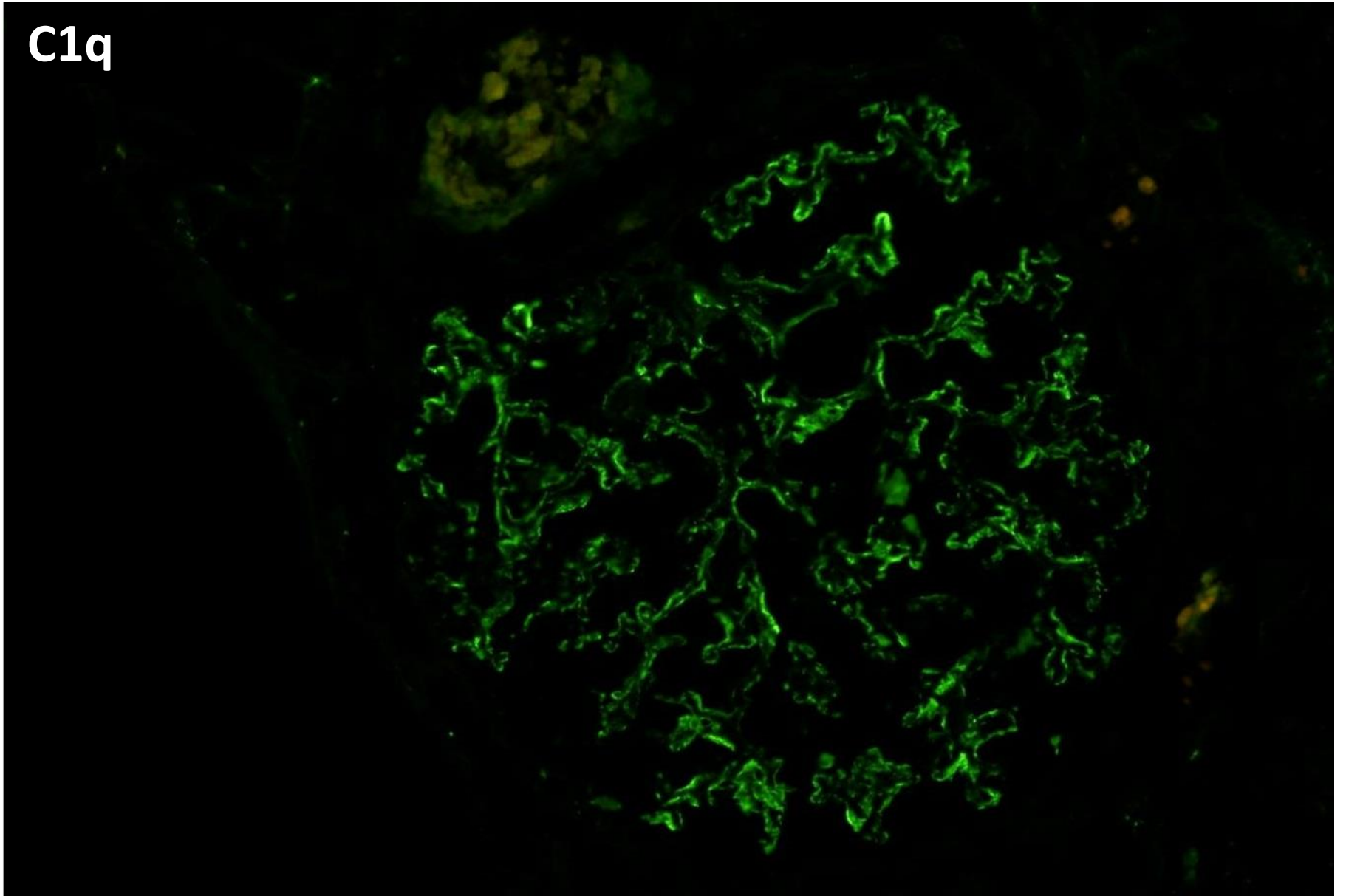


C3



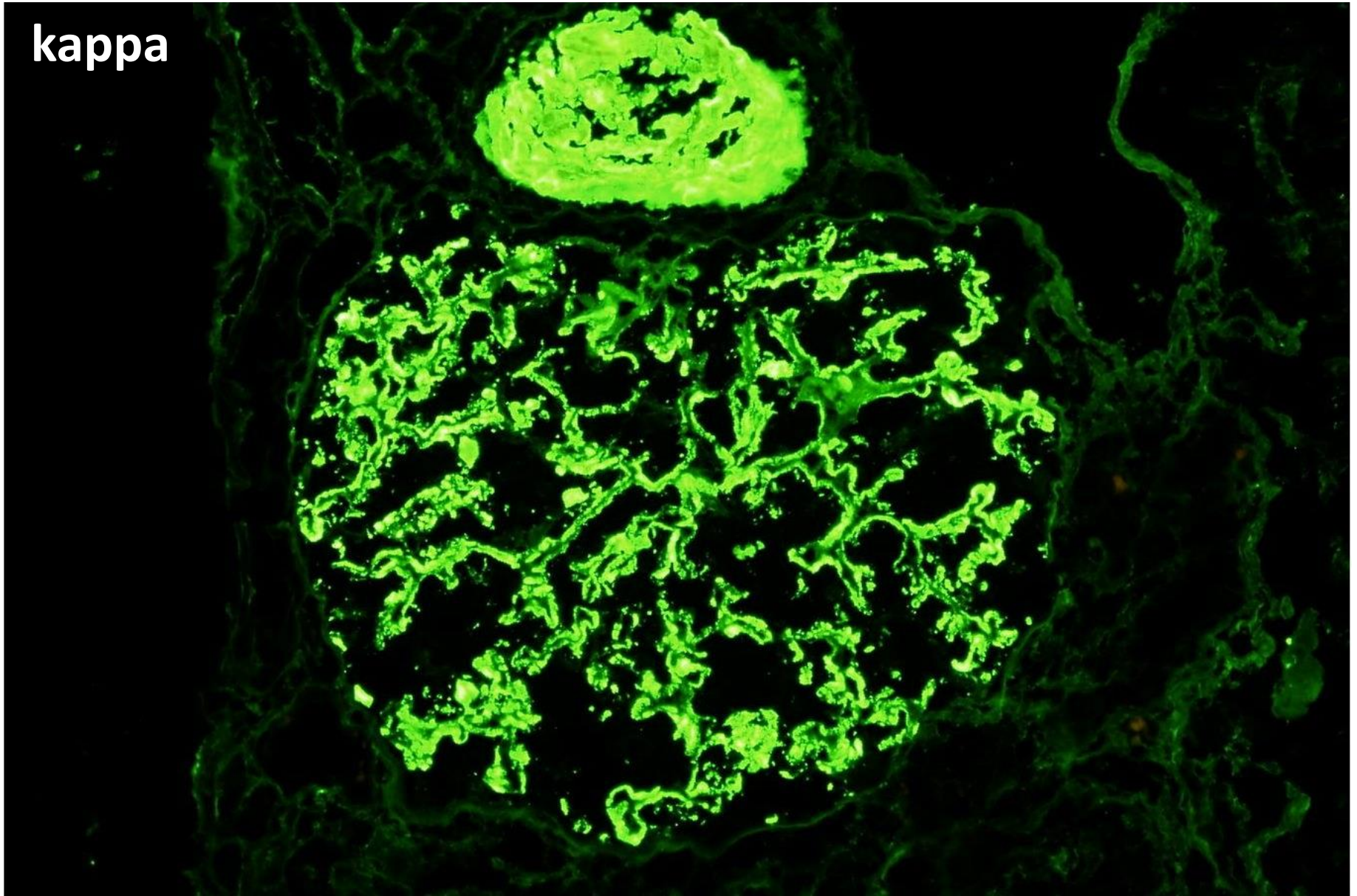


C1q

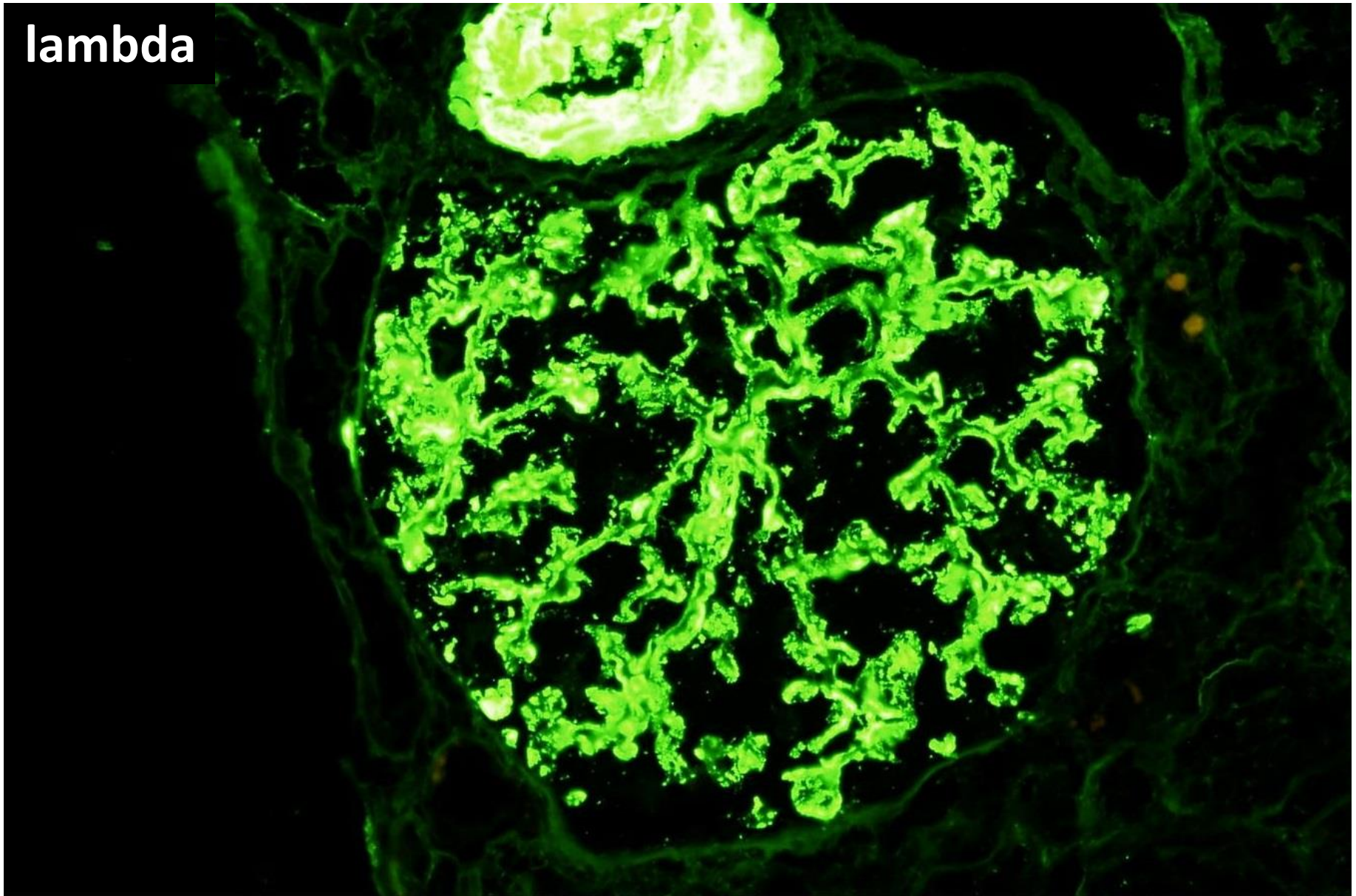




kappa

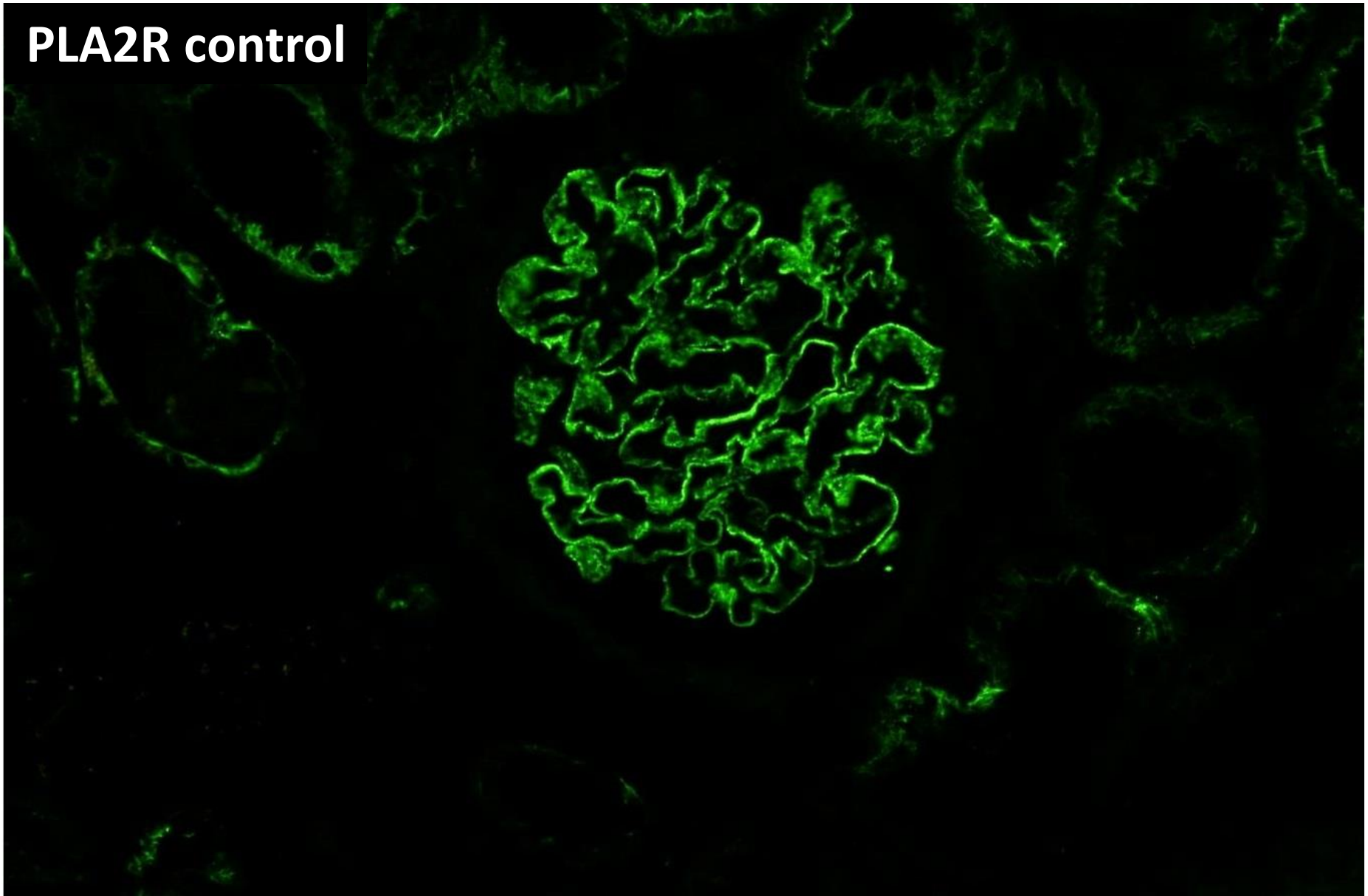


lambda

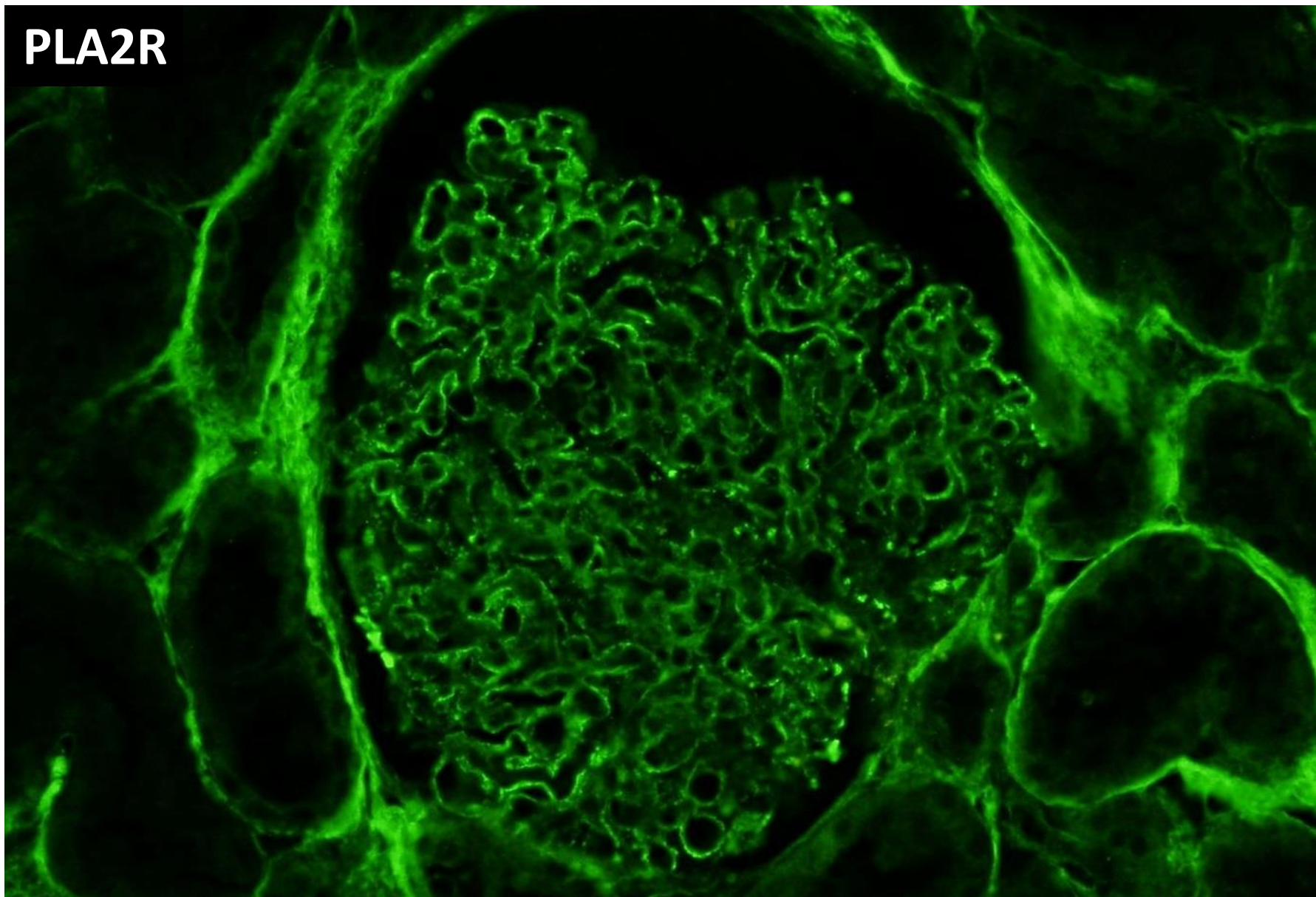




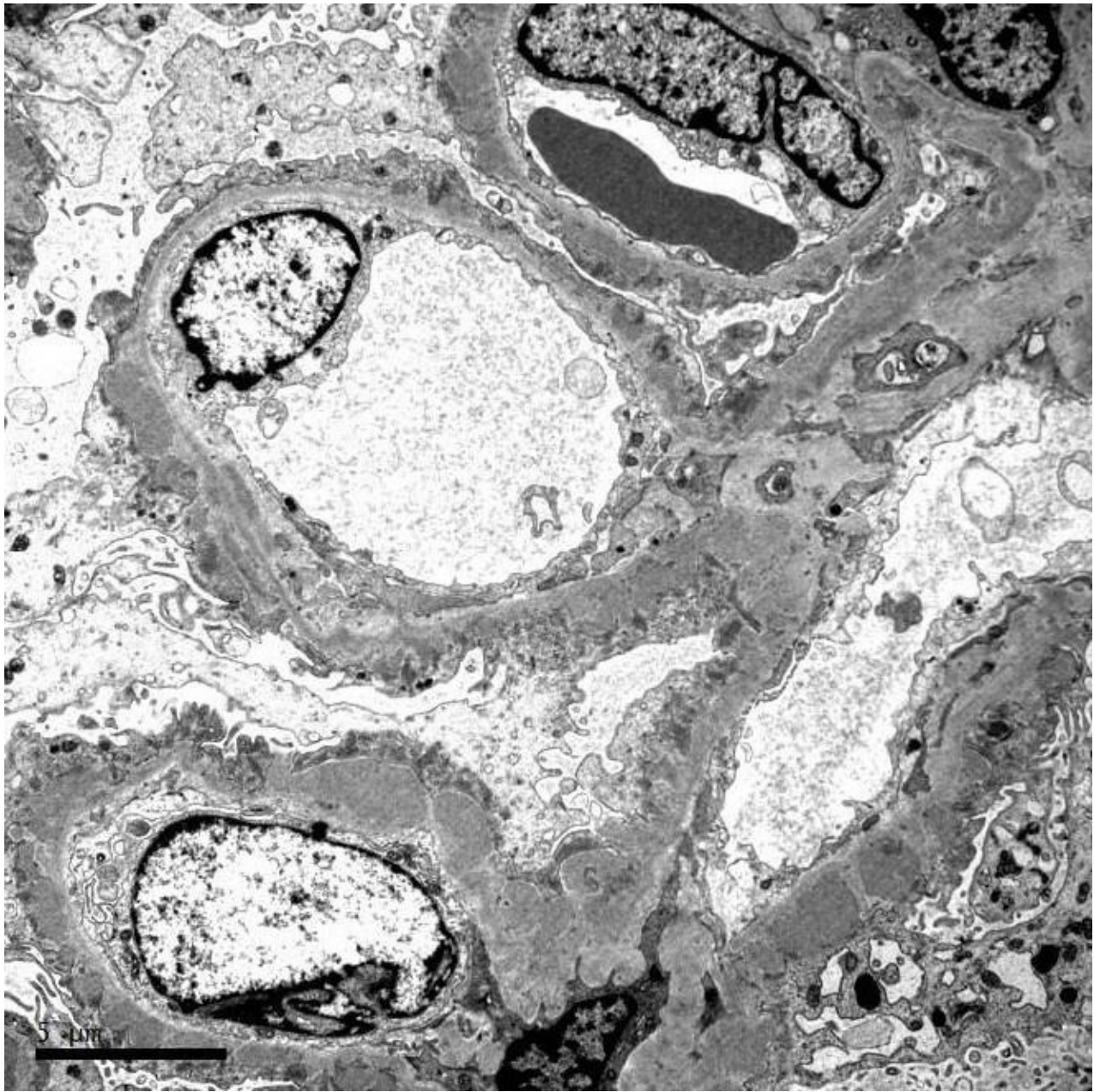
**PLA2R control**

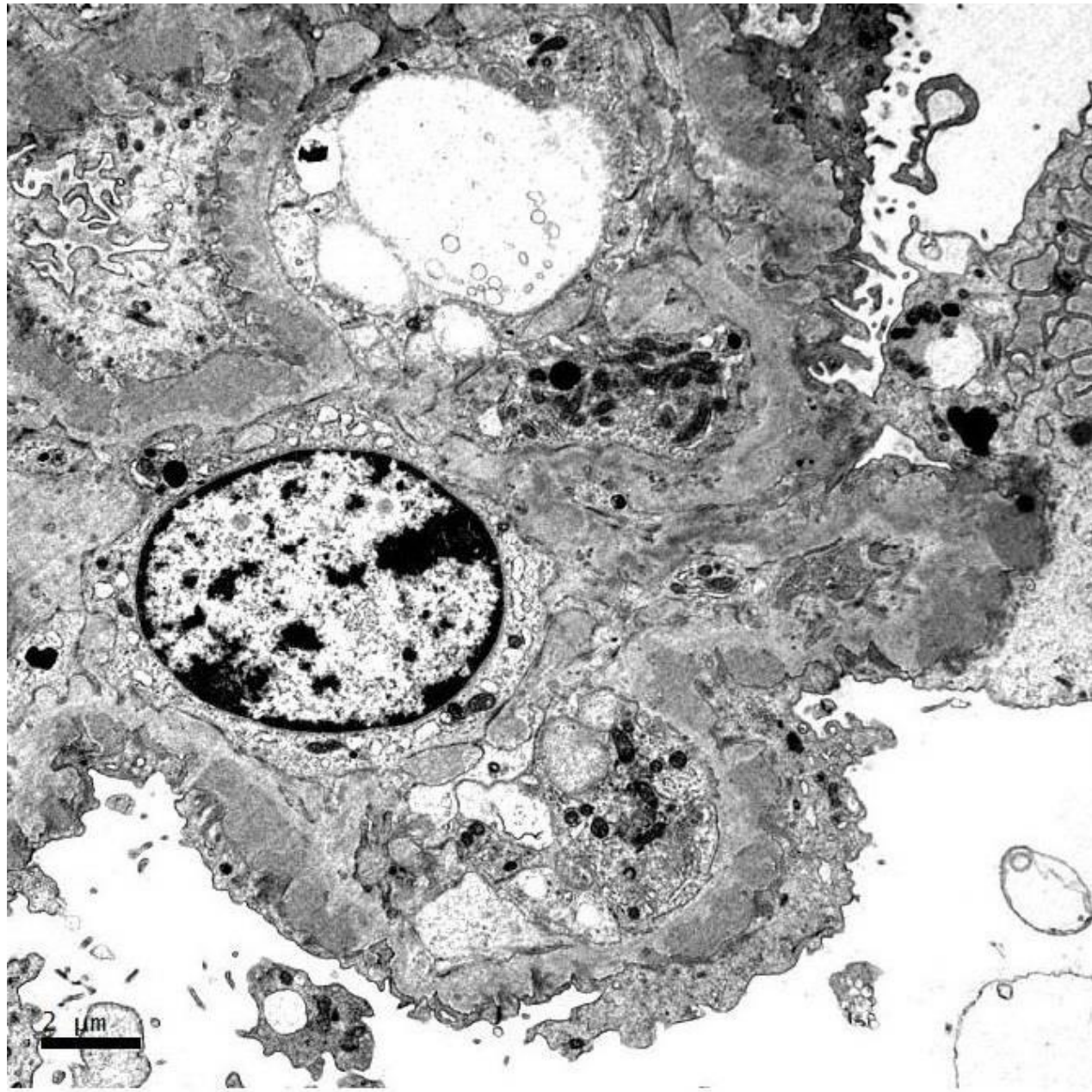


**PLA2R**

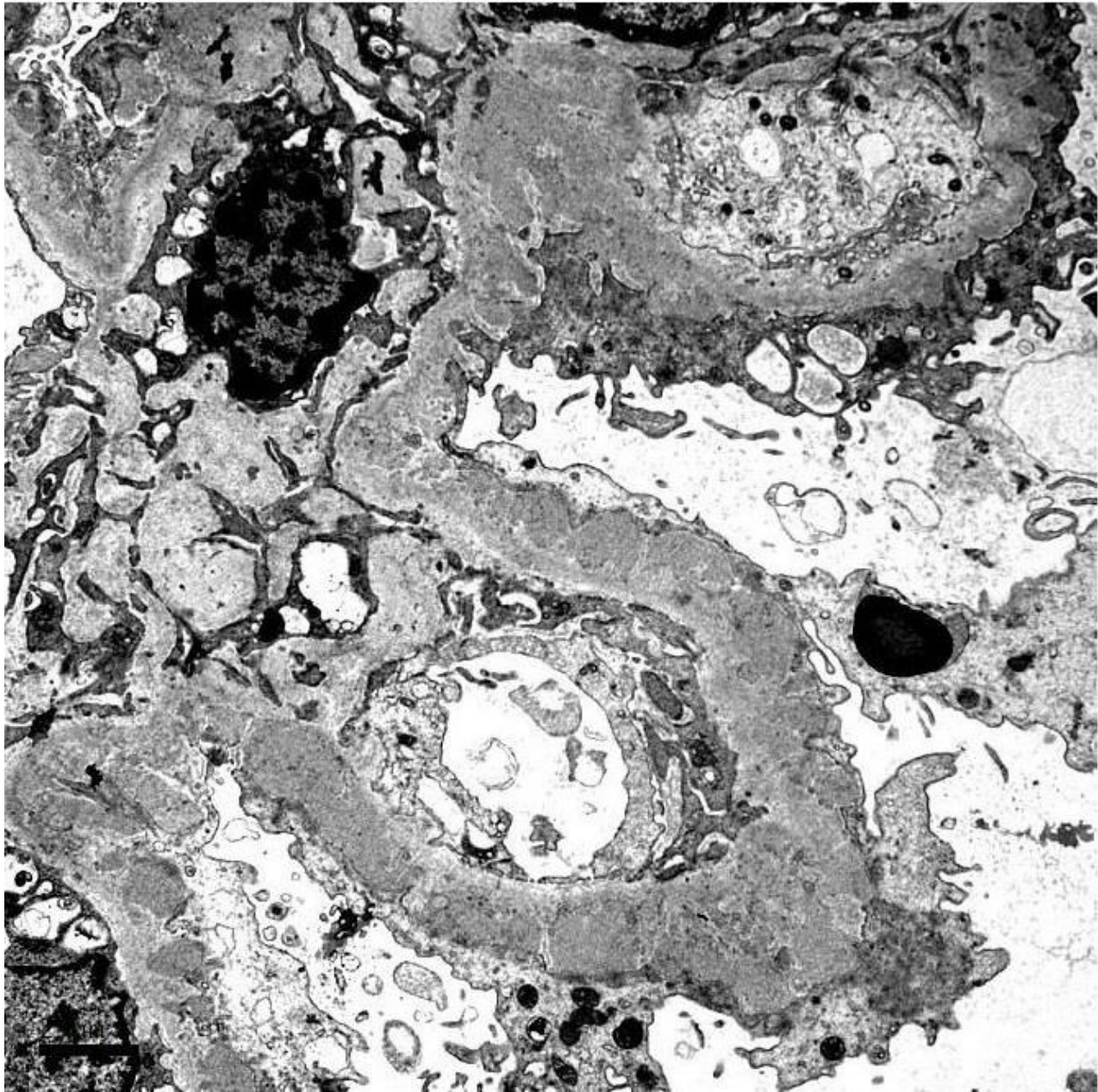


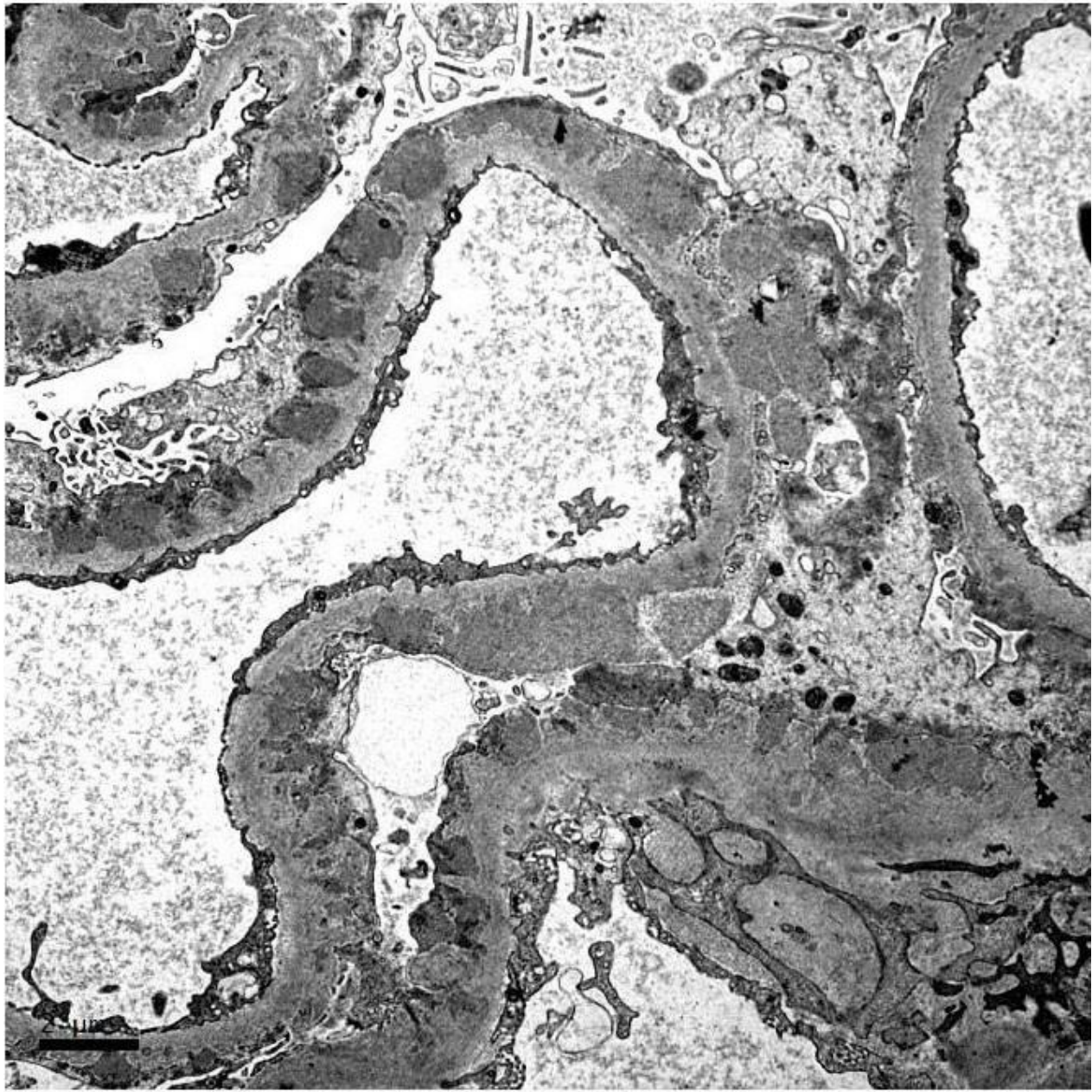
















# RENAL BIOPSY CLINICOPATHOLOGICAL WORKSHOP 2018



**PATHOLOGY**



Division of Pathology  
Singapore General Hospital



Department of Renal Medicine  
Singapore General Hospital



**MEDICINE**