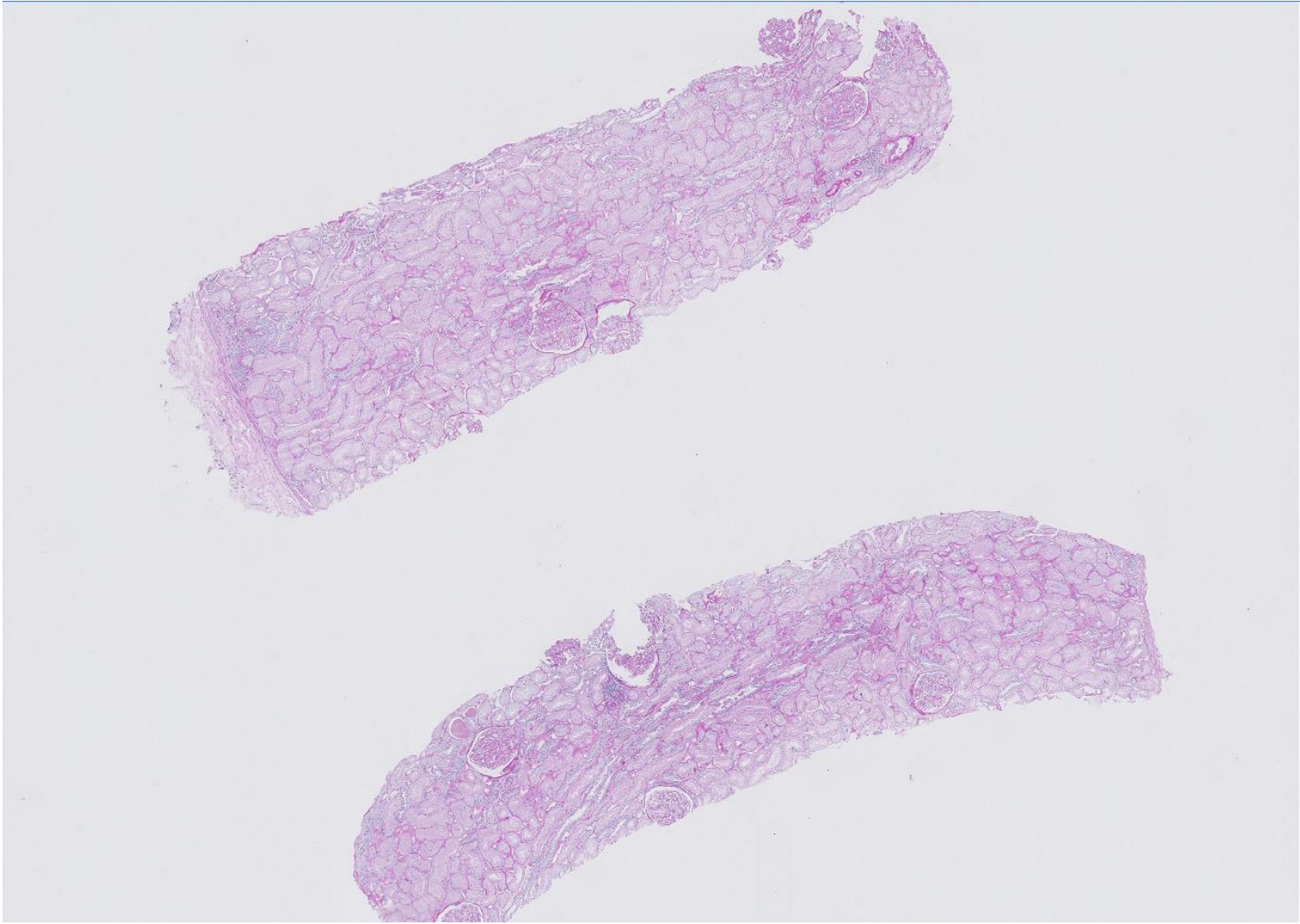


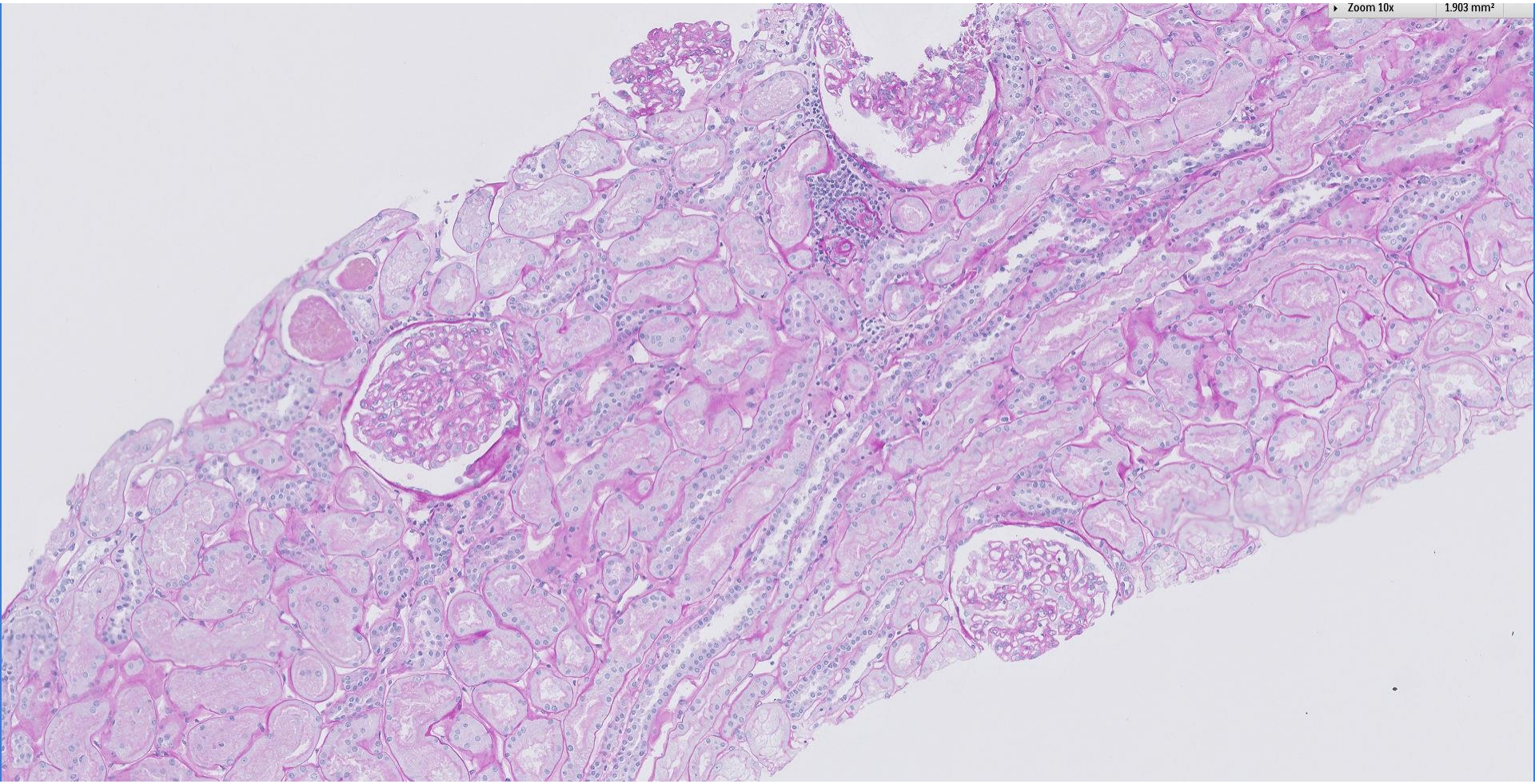
Case 15

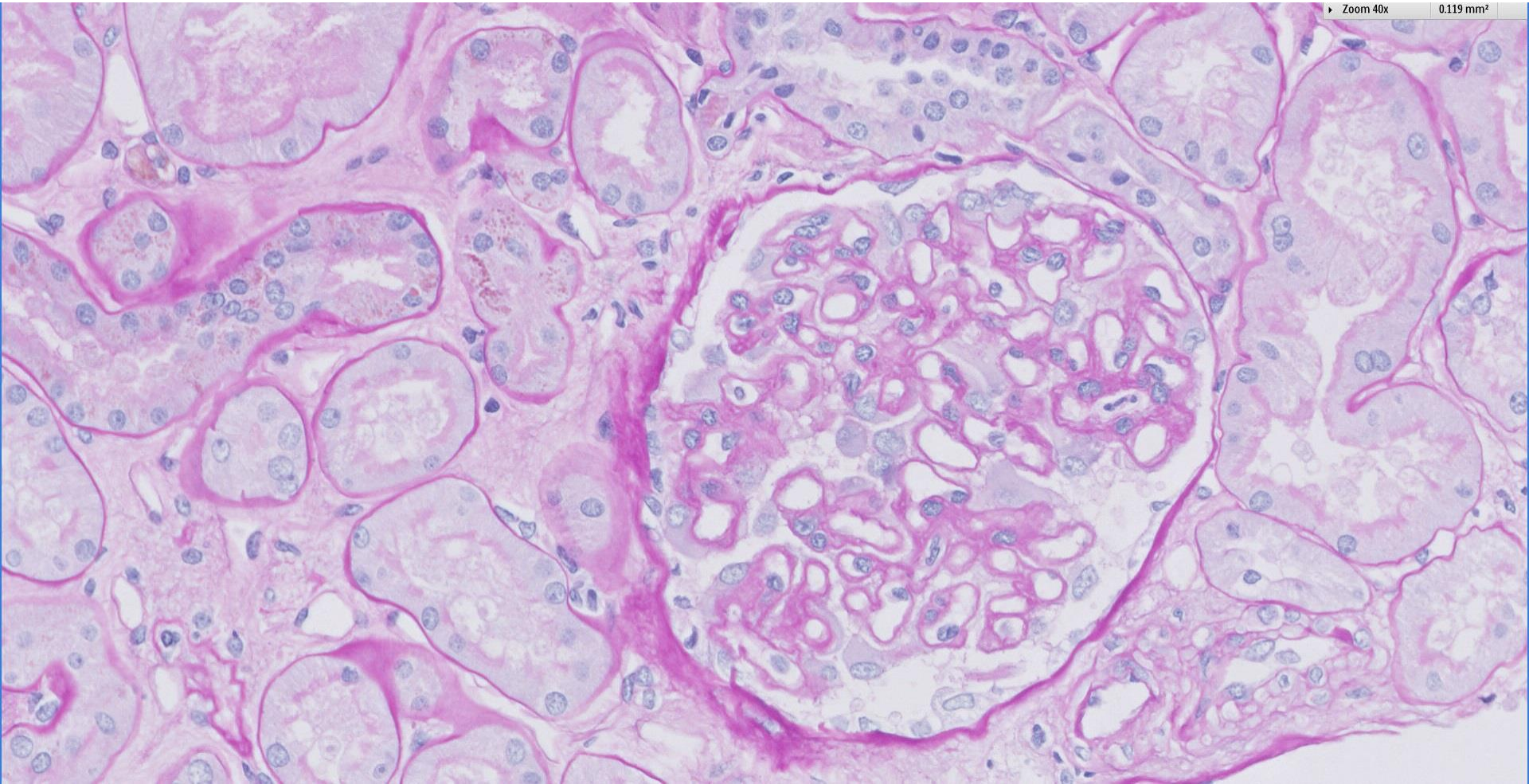
62 year old hepatitis B carrier with persistent microscopic haematuria, proteinuria and normal renal function.

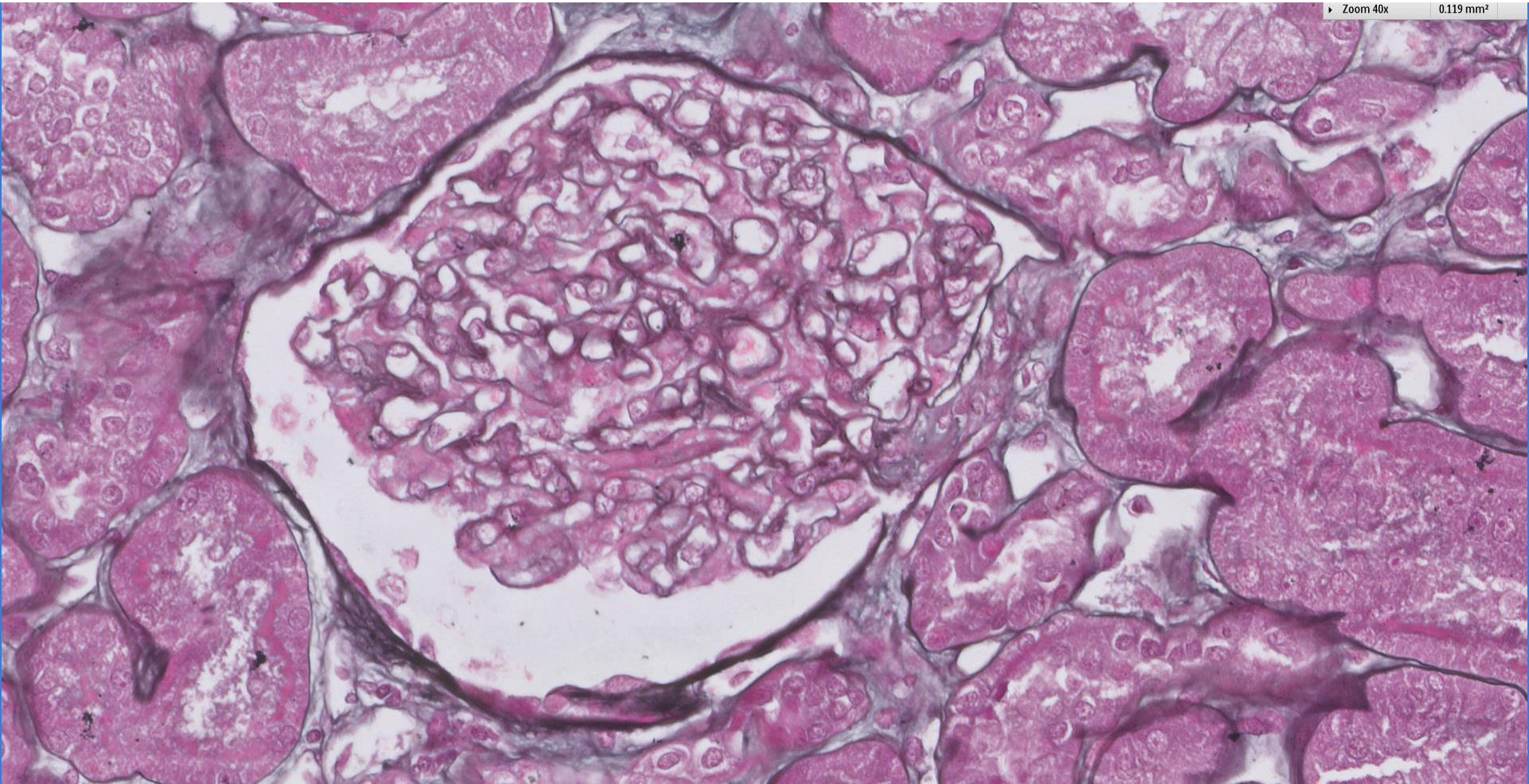


Zoom 10x

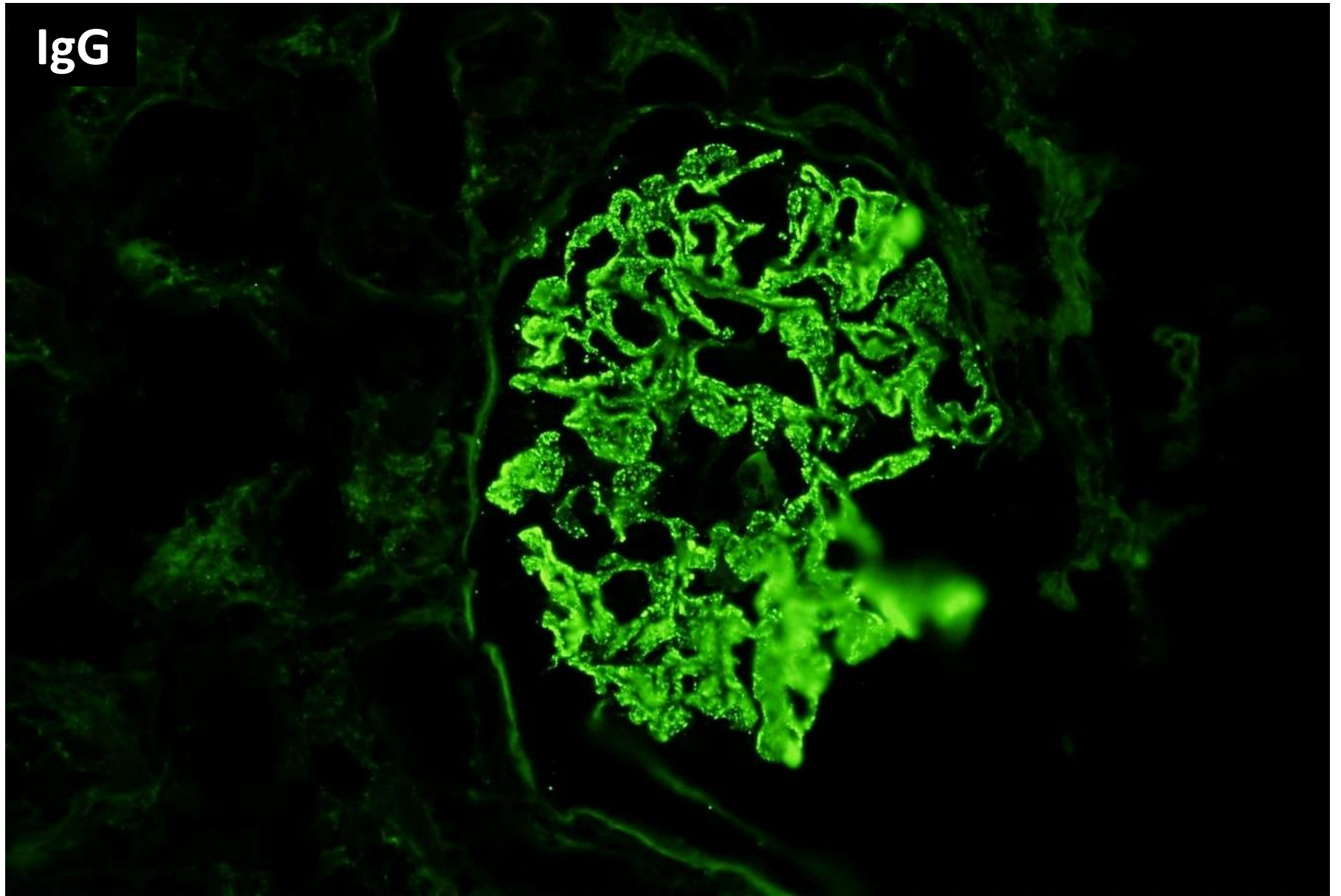
1.903 mm²



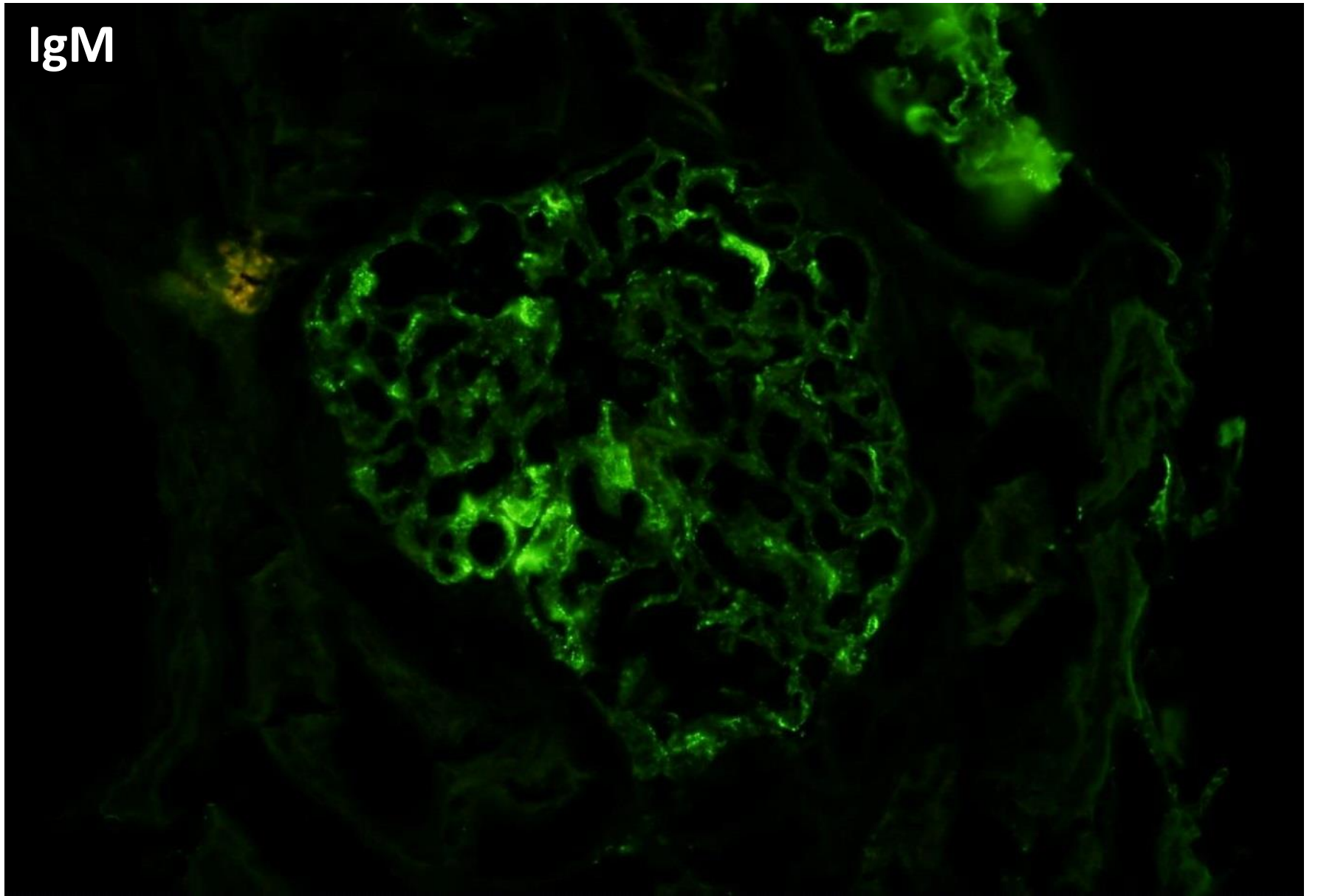




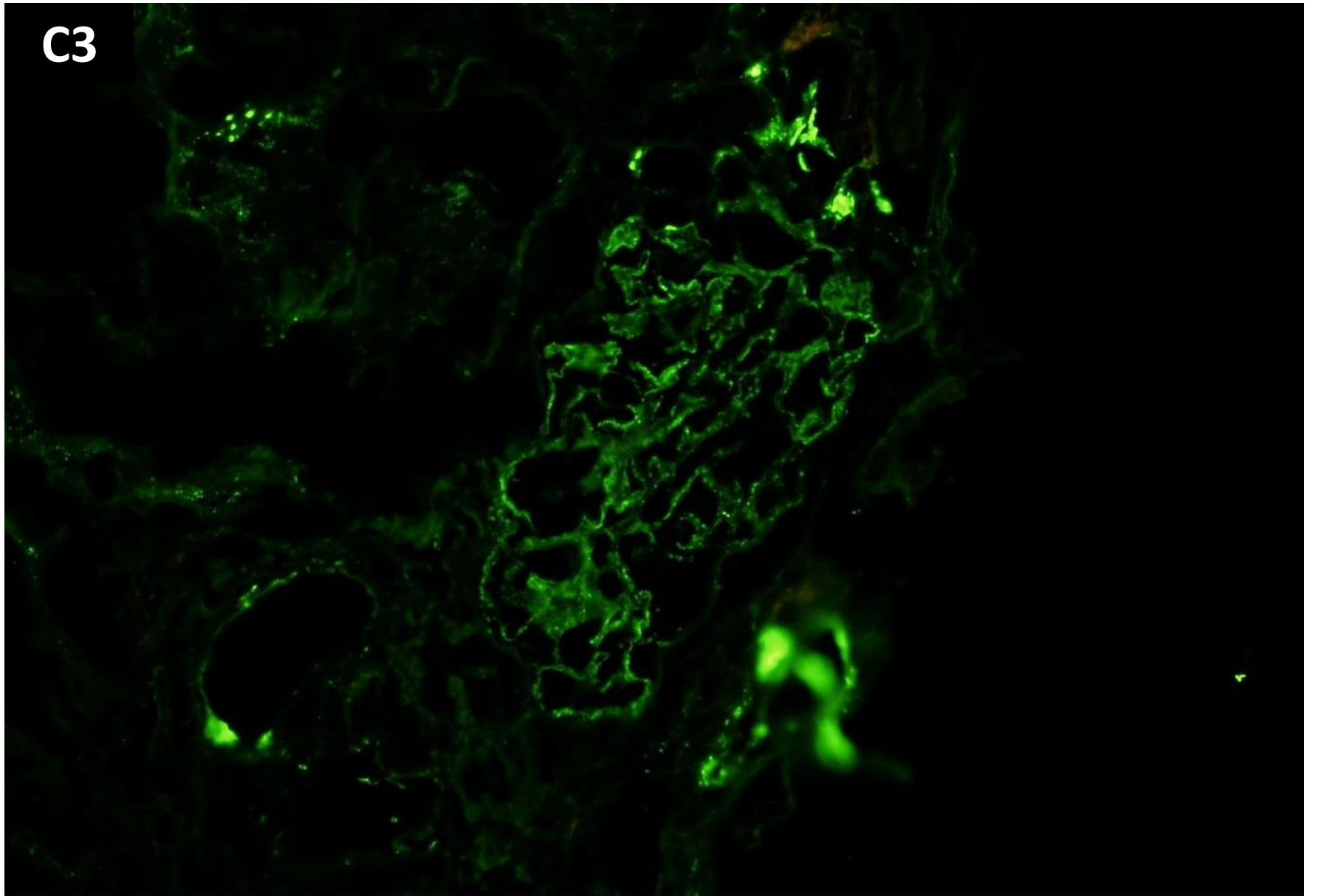
IgG



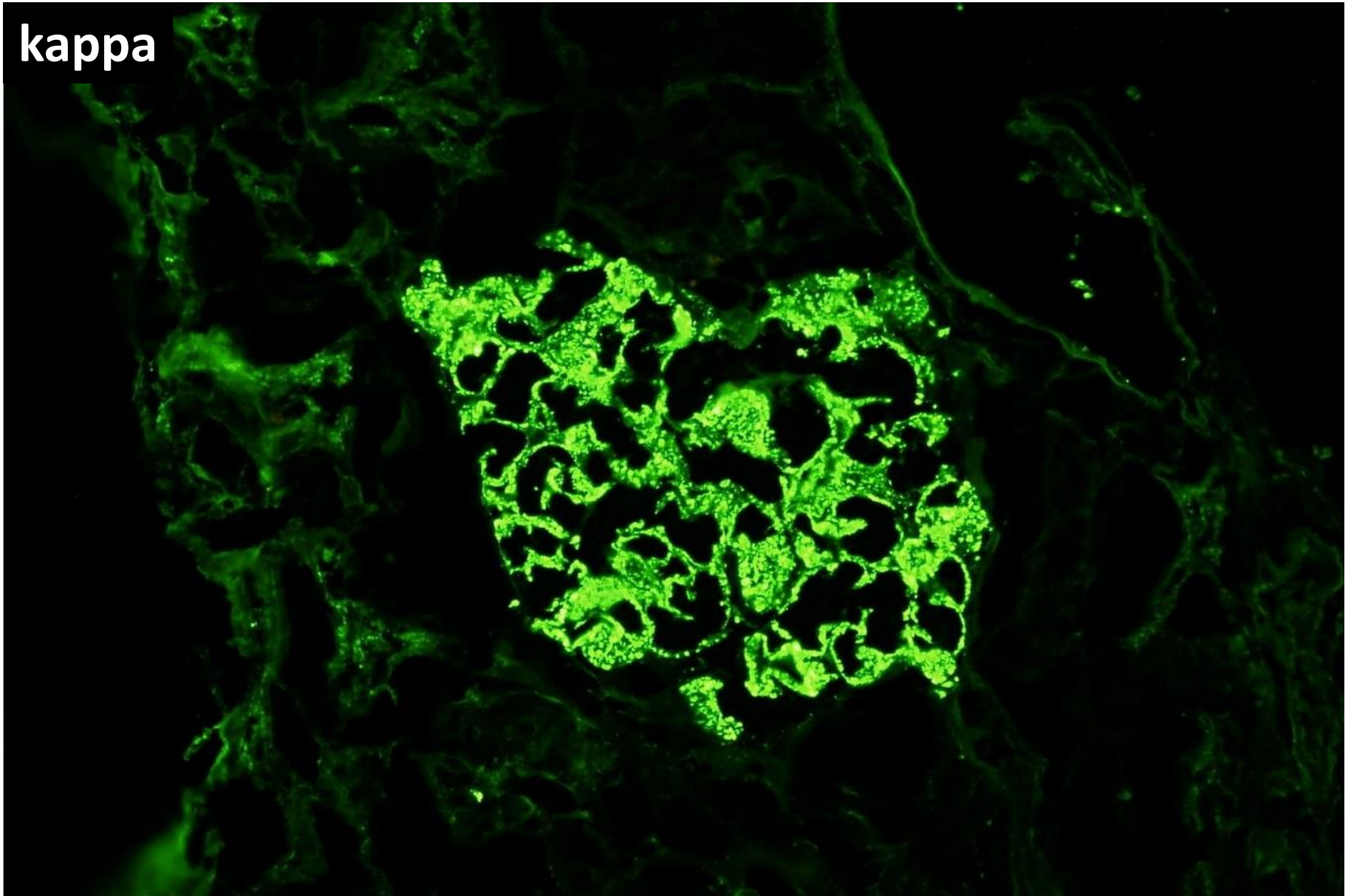
IgM



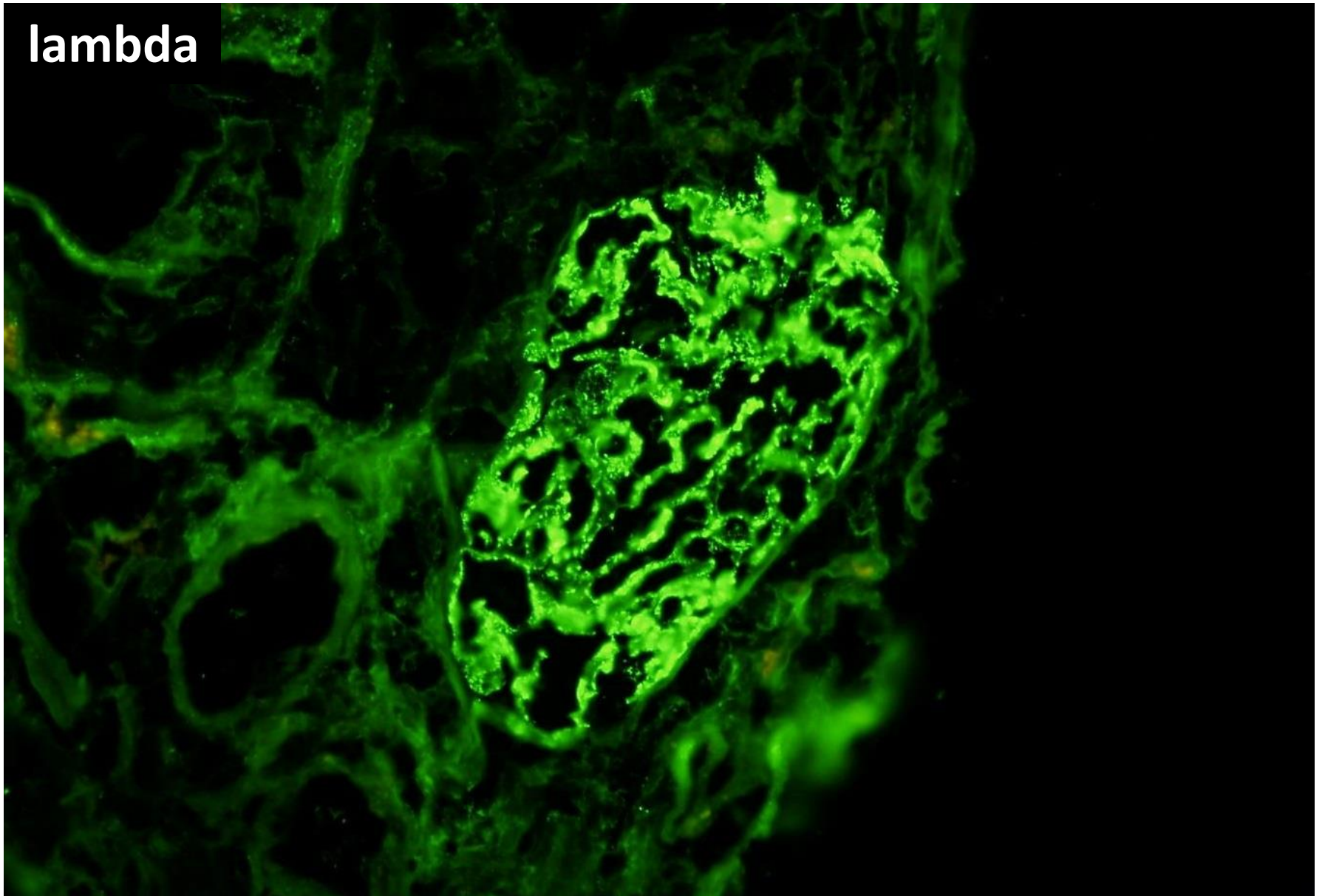
C3



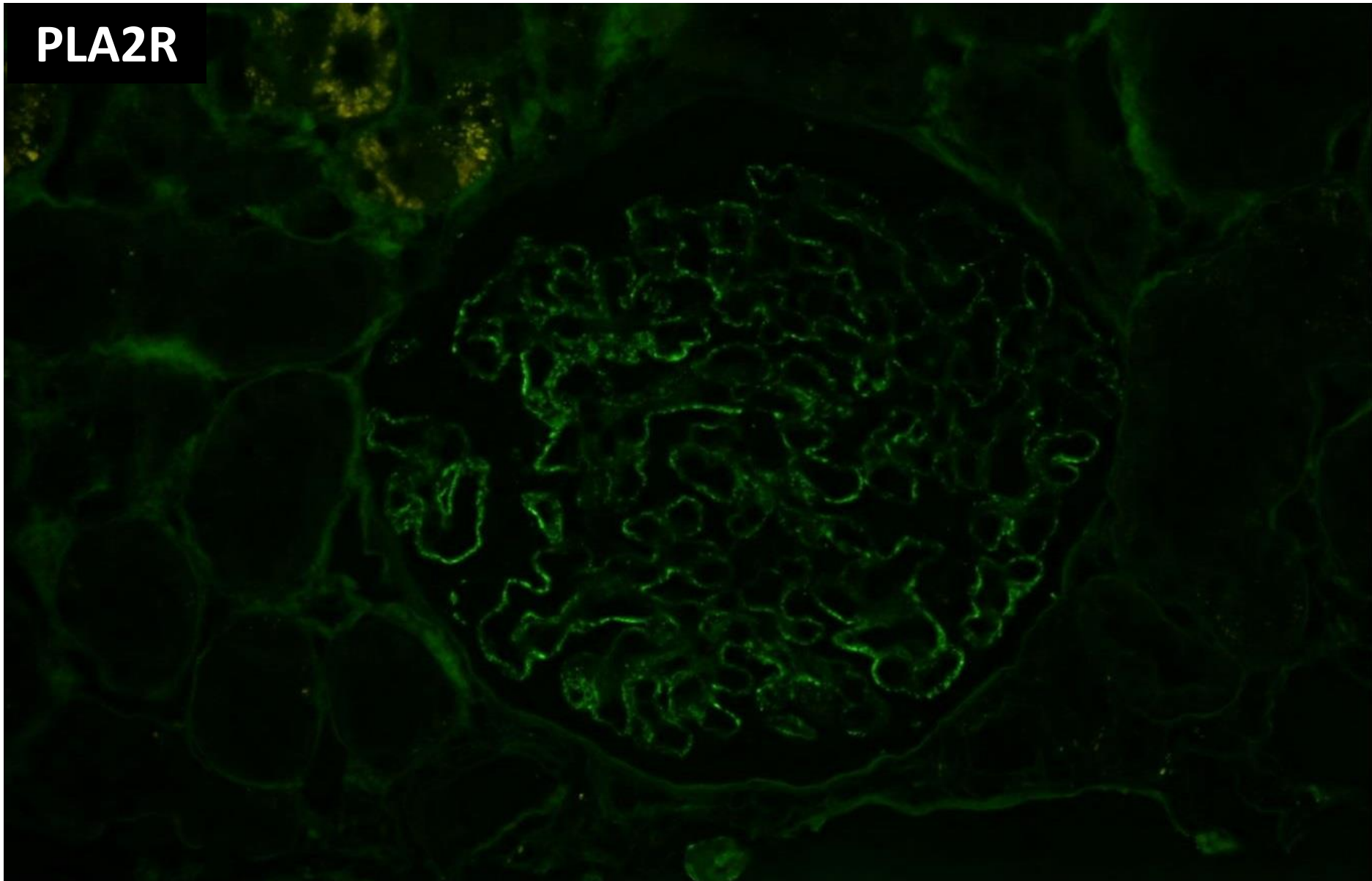
kappa

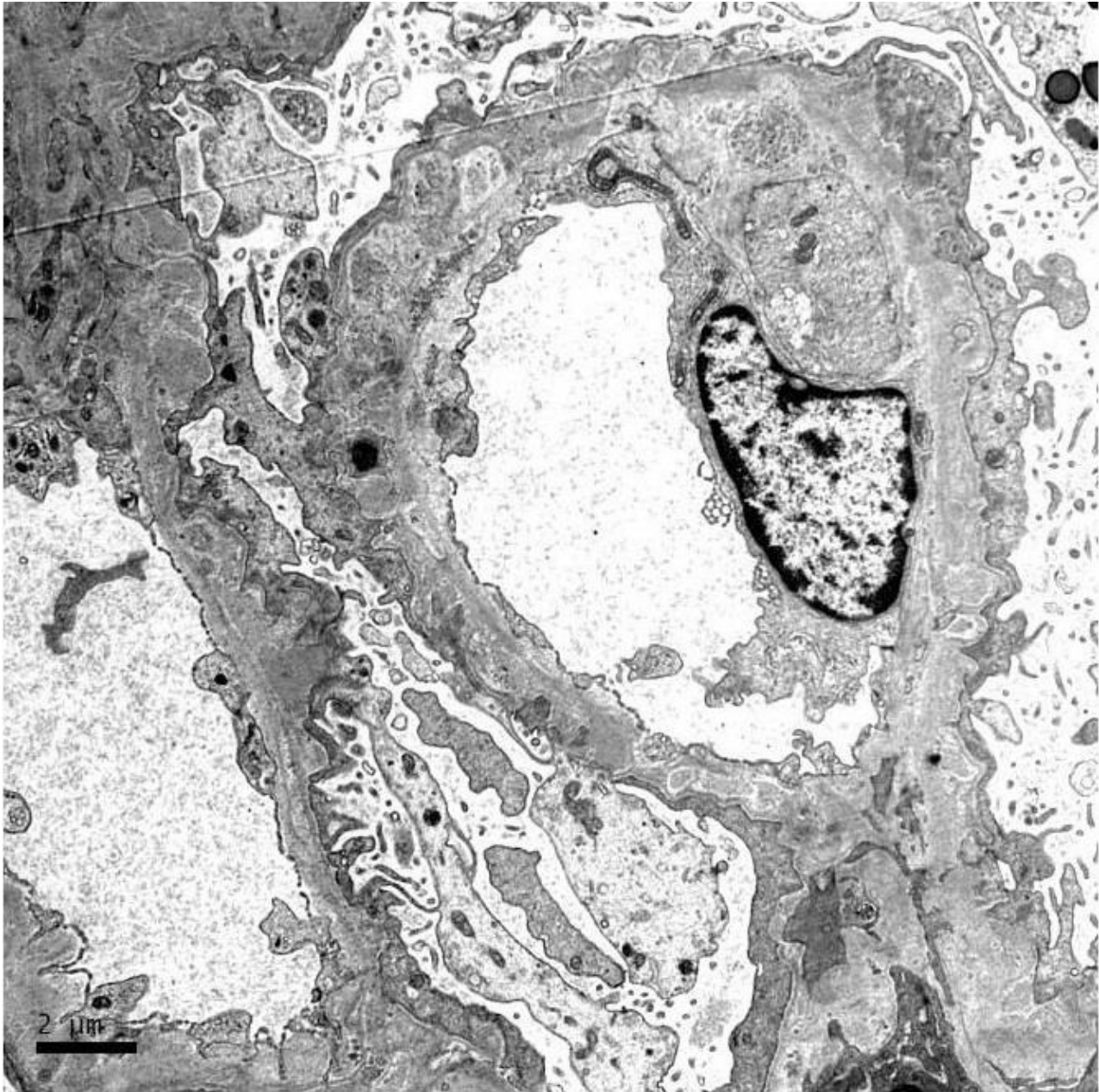


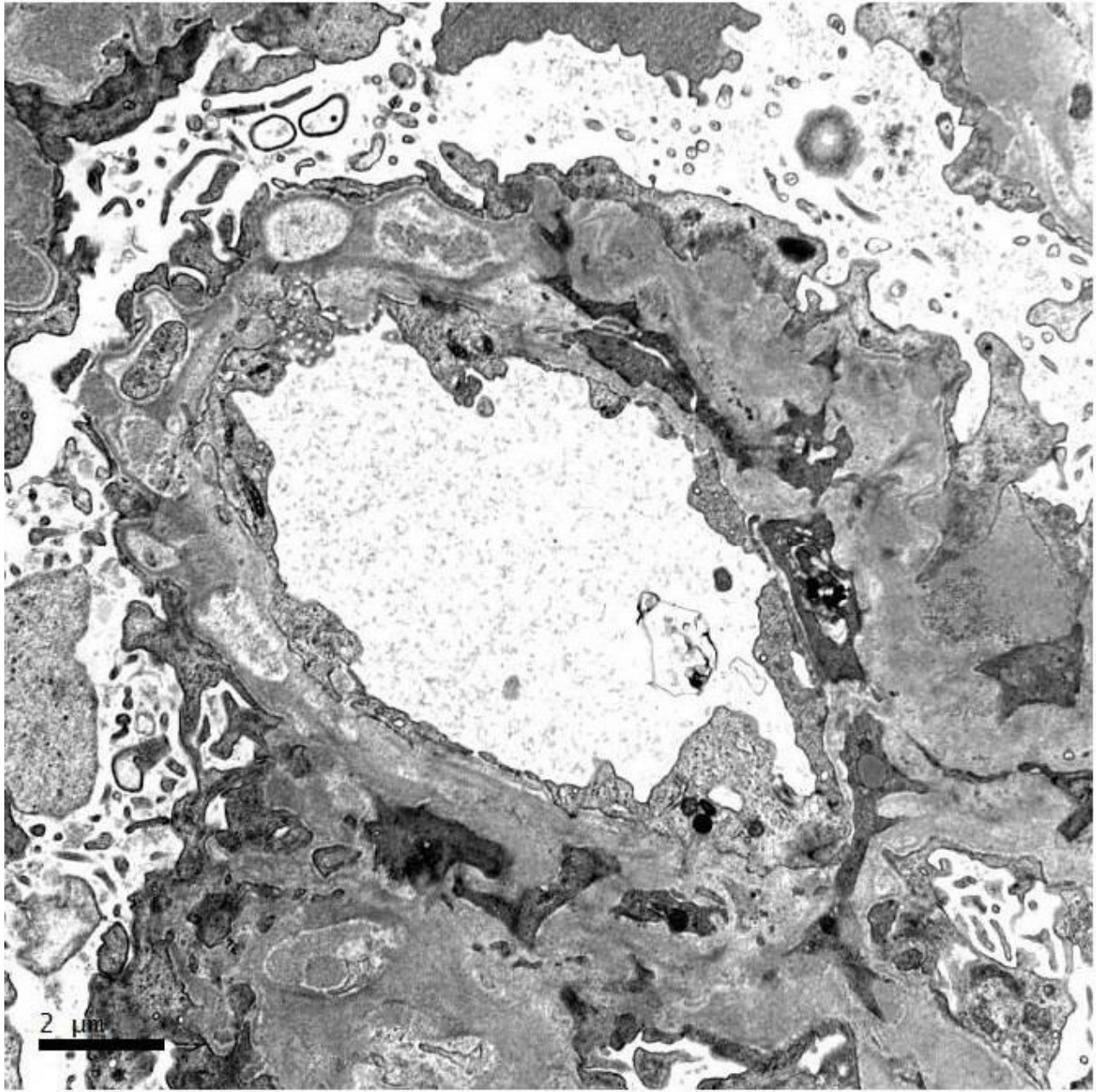
lambda

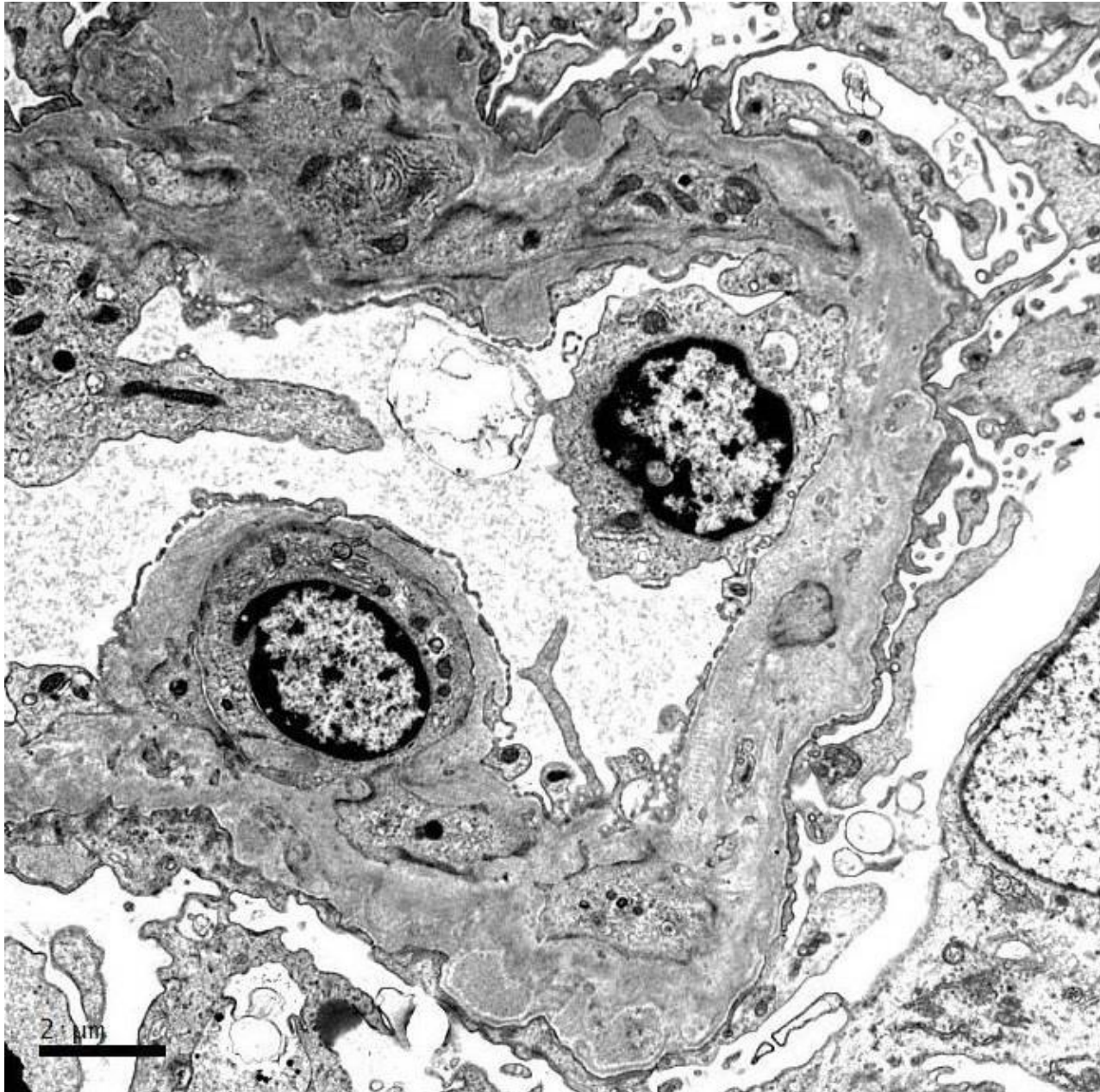


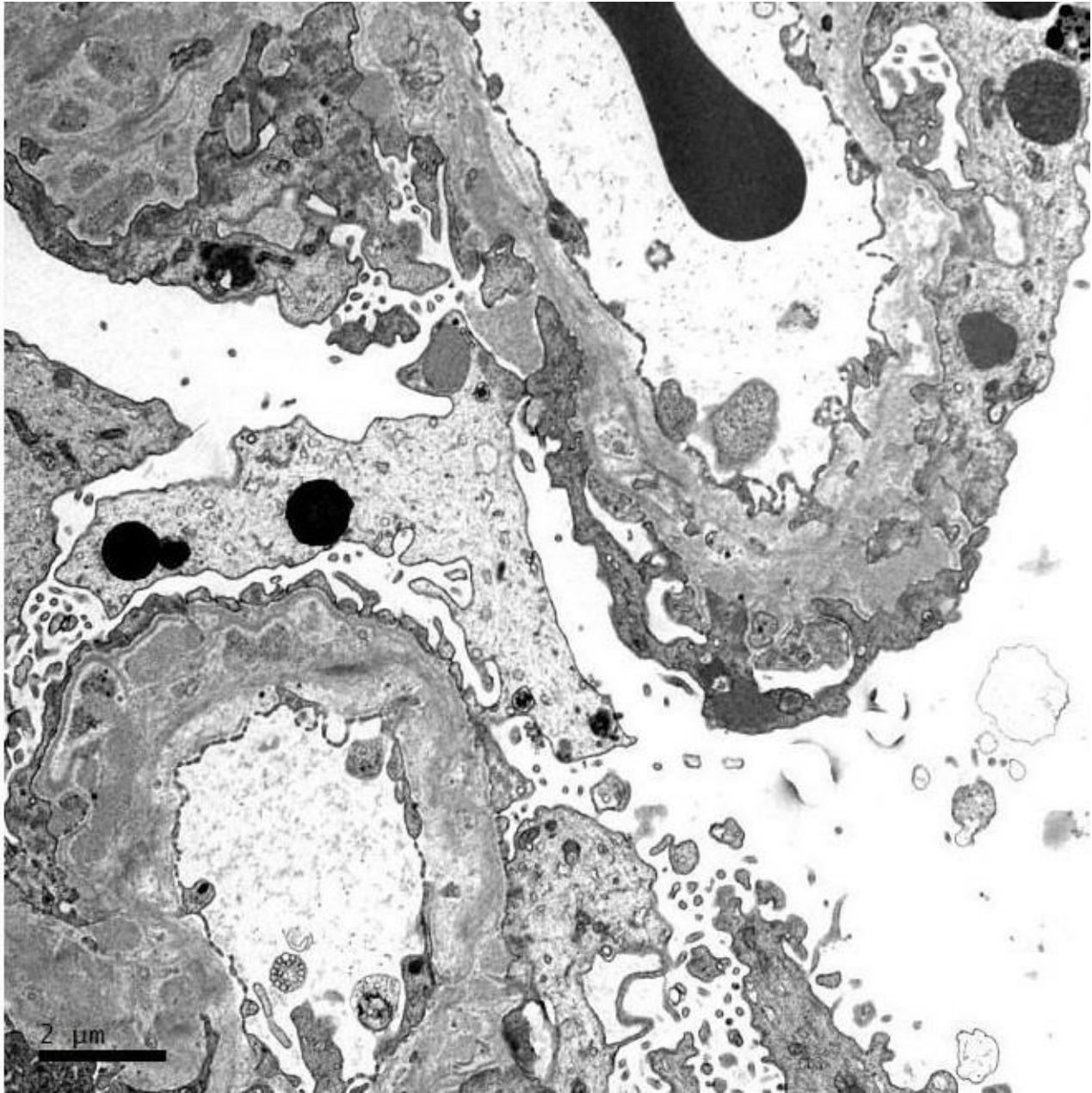
PLA2R













RENAL BIOPSY CLINICOPATHOLOGICAL WORKSHOP 2018



PATHOLOGY



Division of Pathology
Singapore General Hospital



Department of Renal Medicine
Singapore General Hospital



MEDICINE