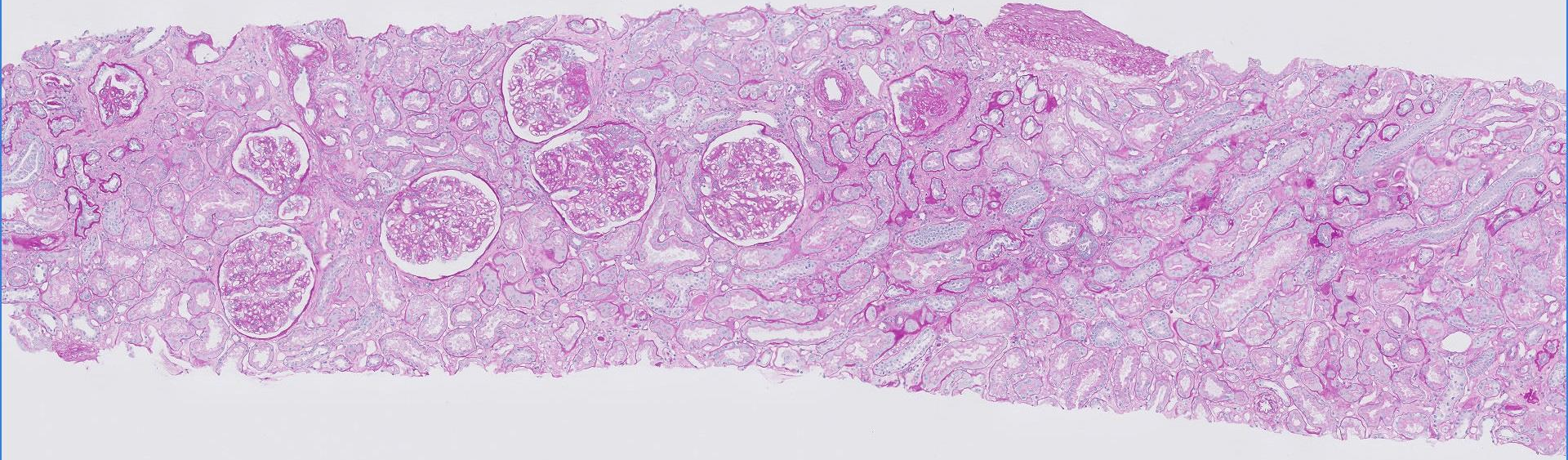
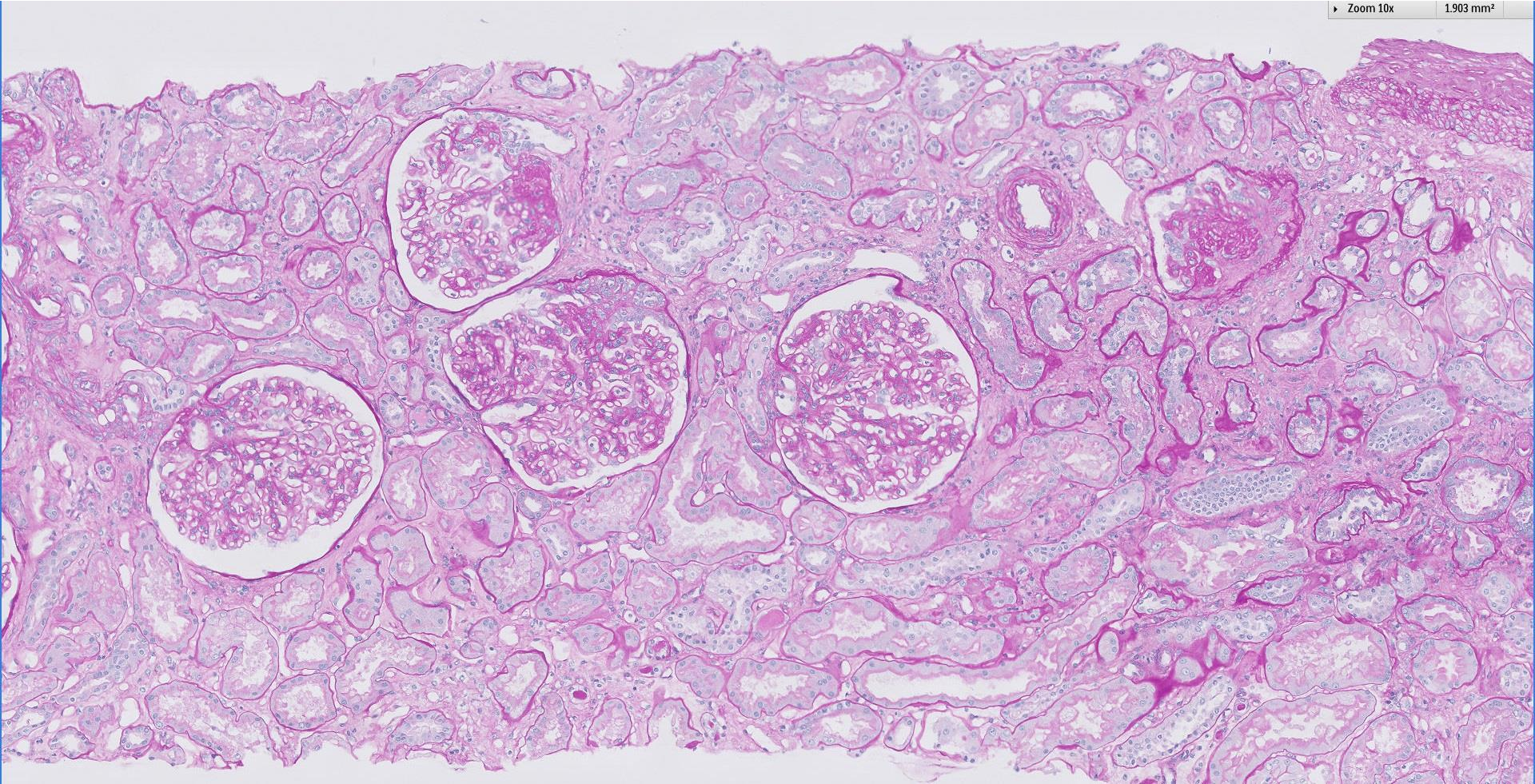


Case 14

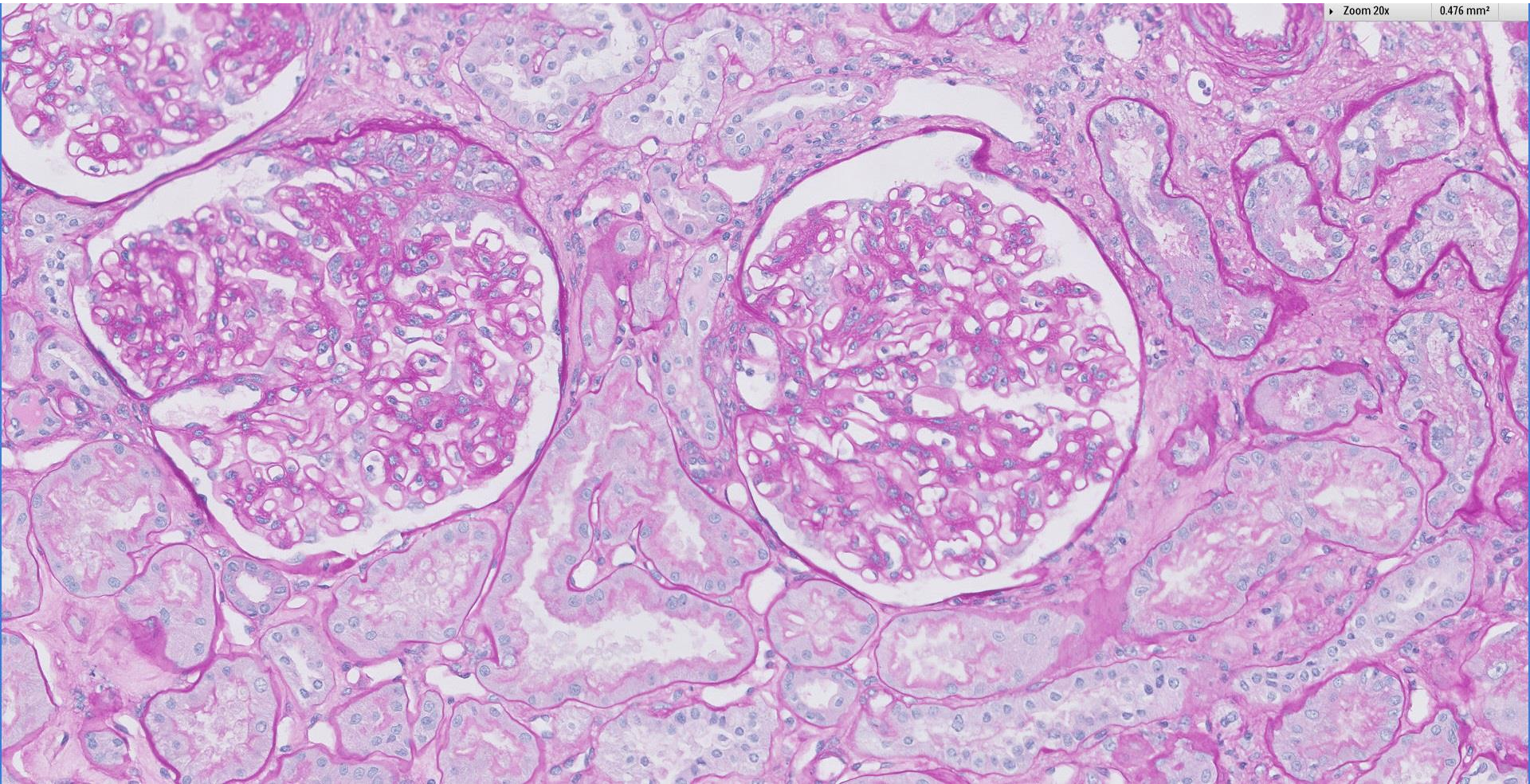
60 year old male with nephrotic syndrome.

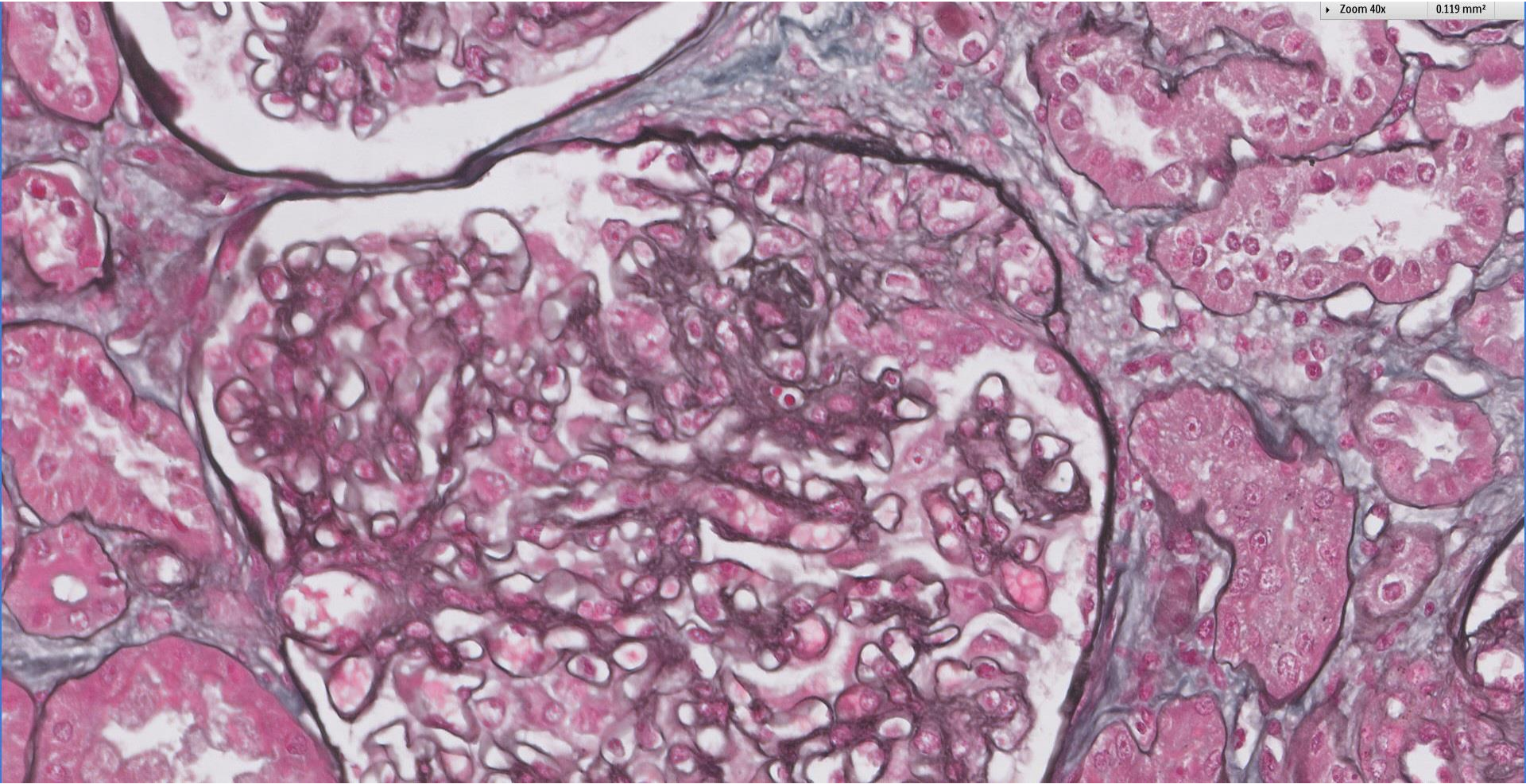




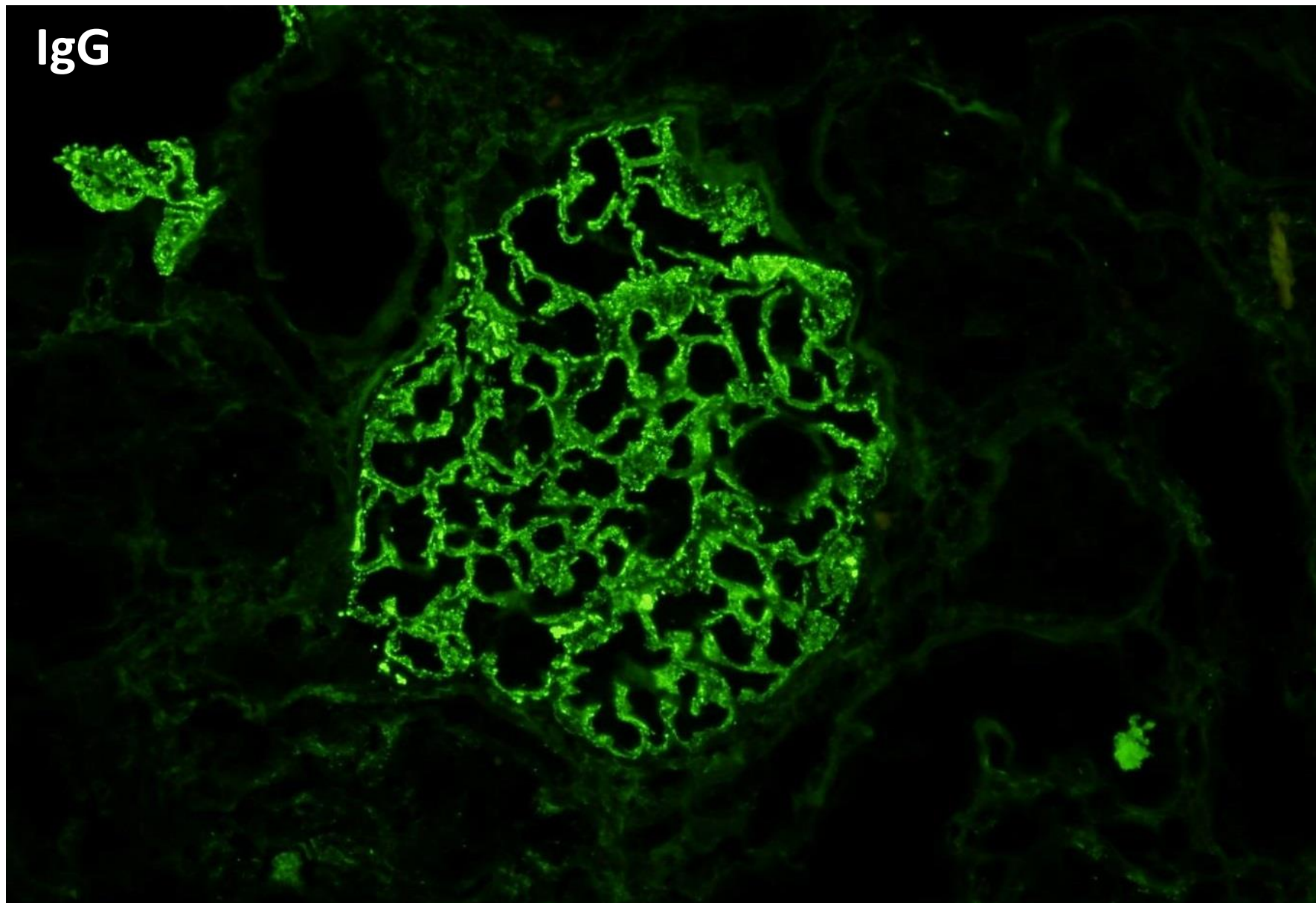
Zoom 20x

0.476 mm²

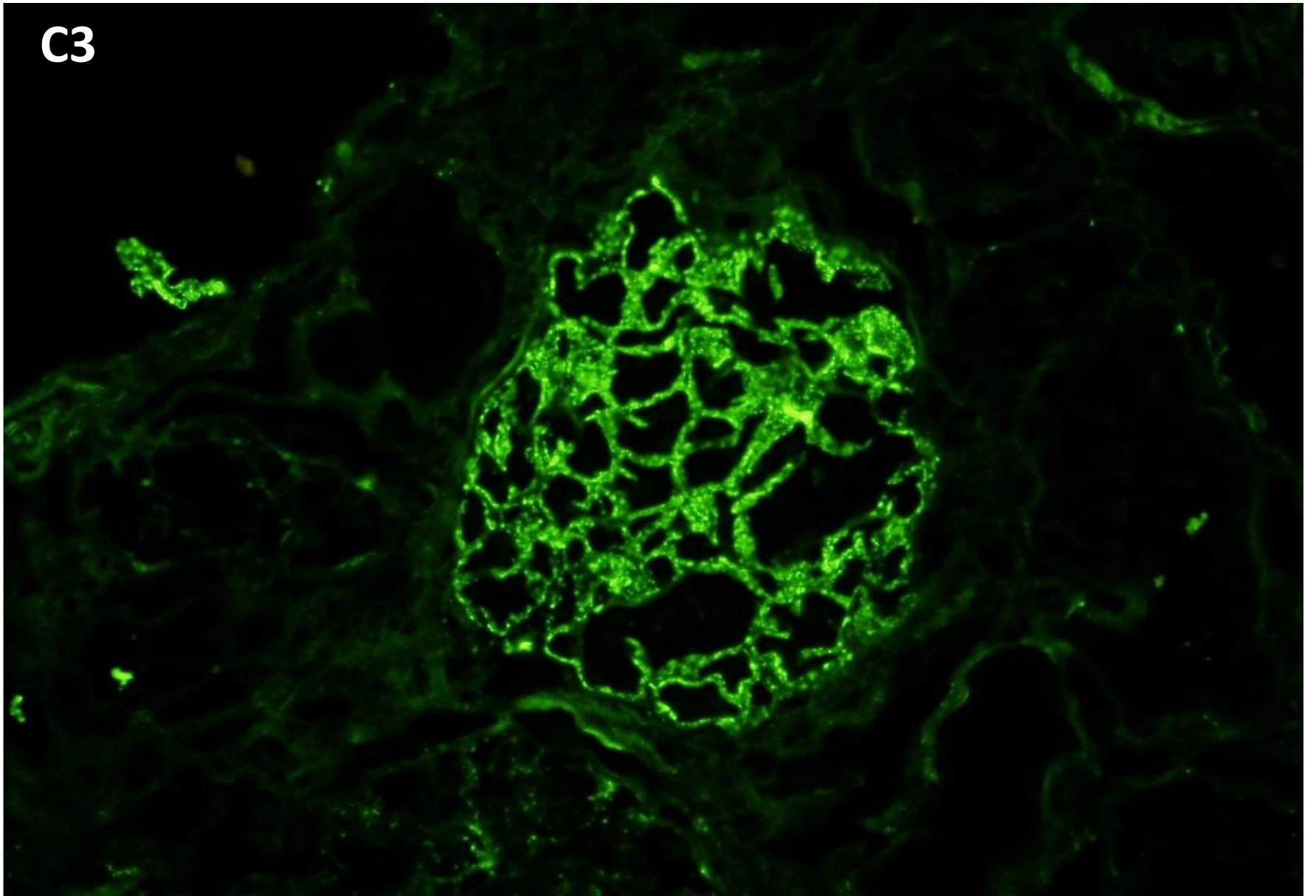




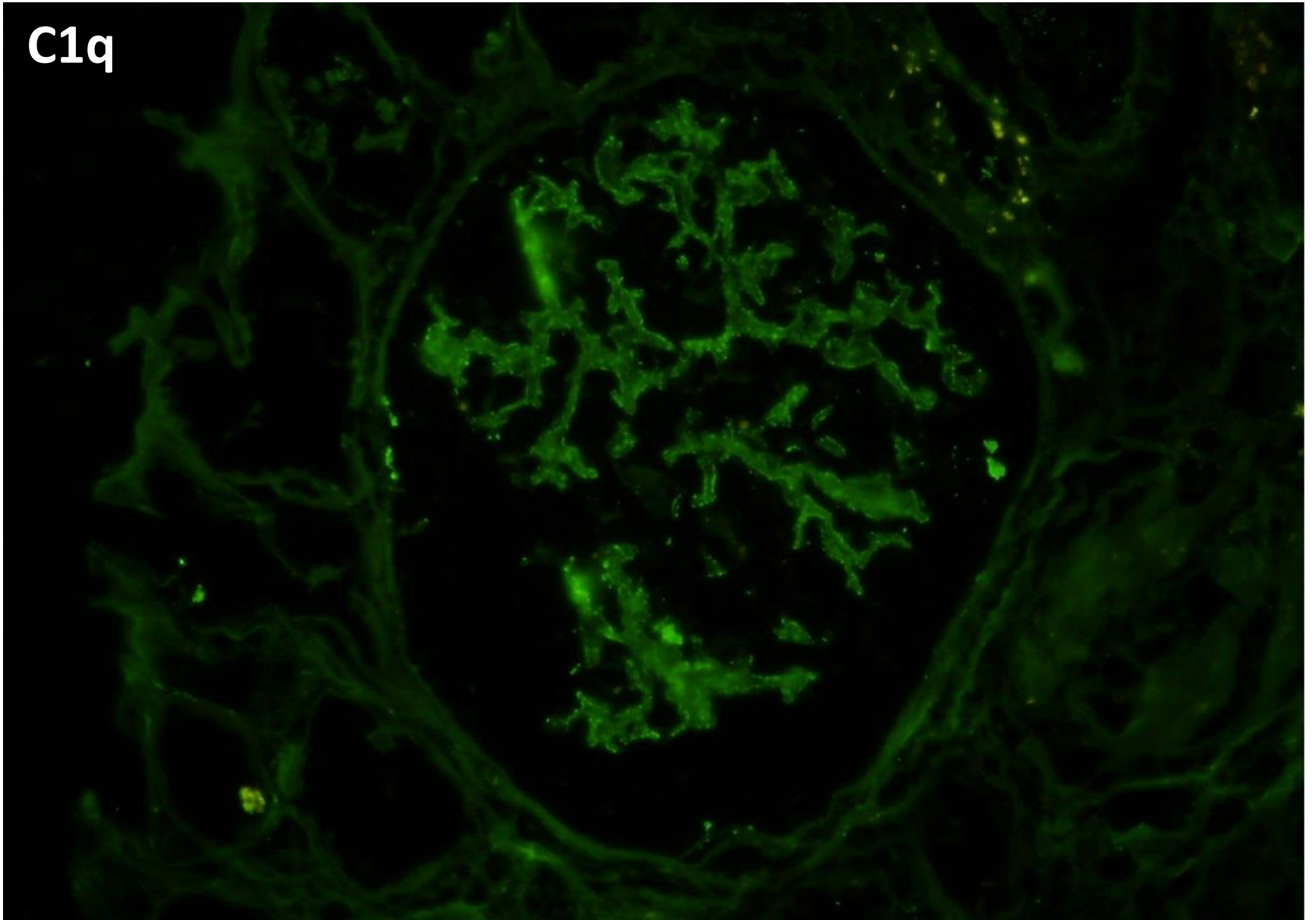
IgG



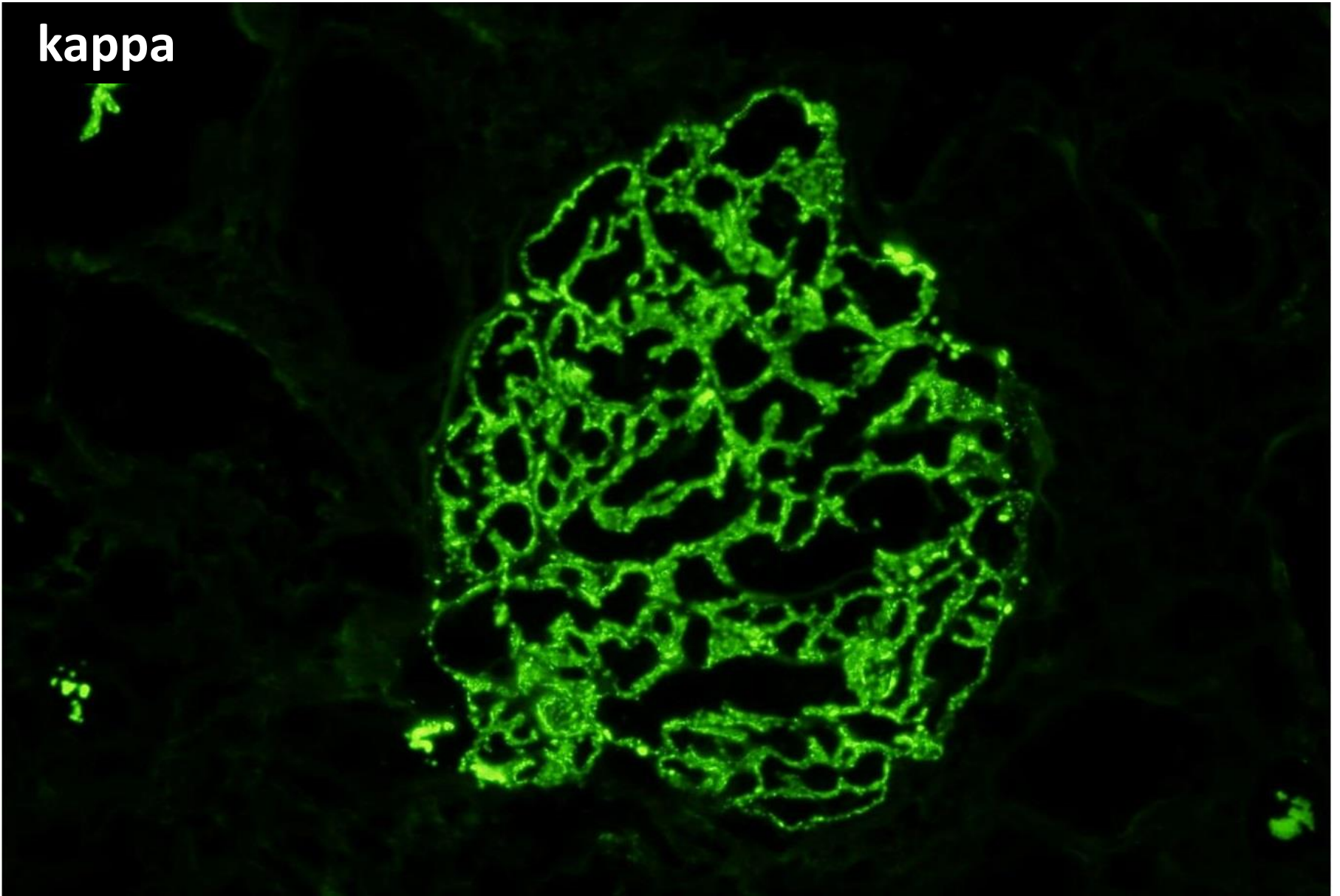
C3



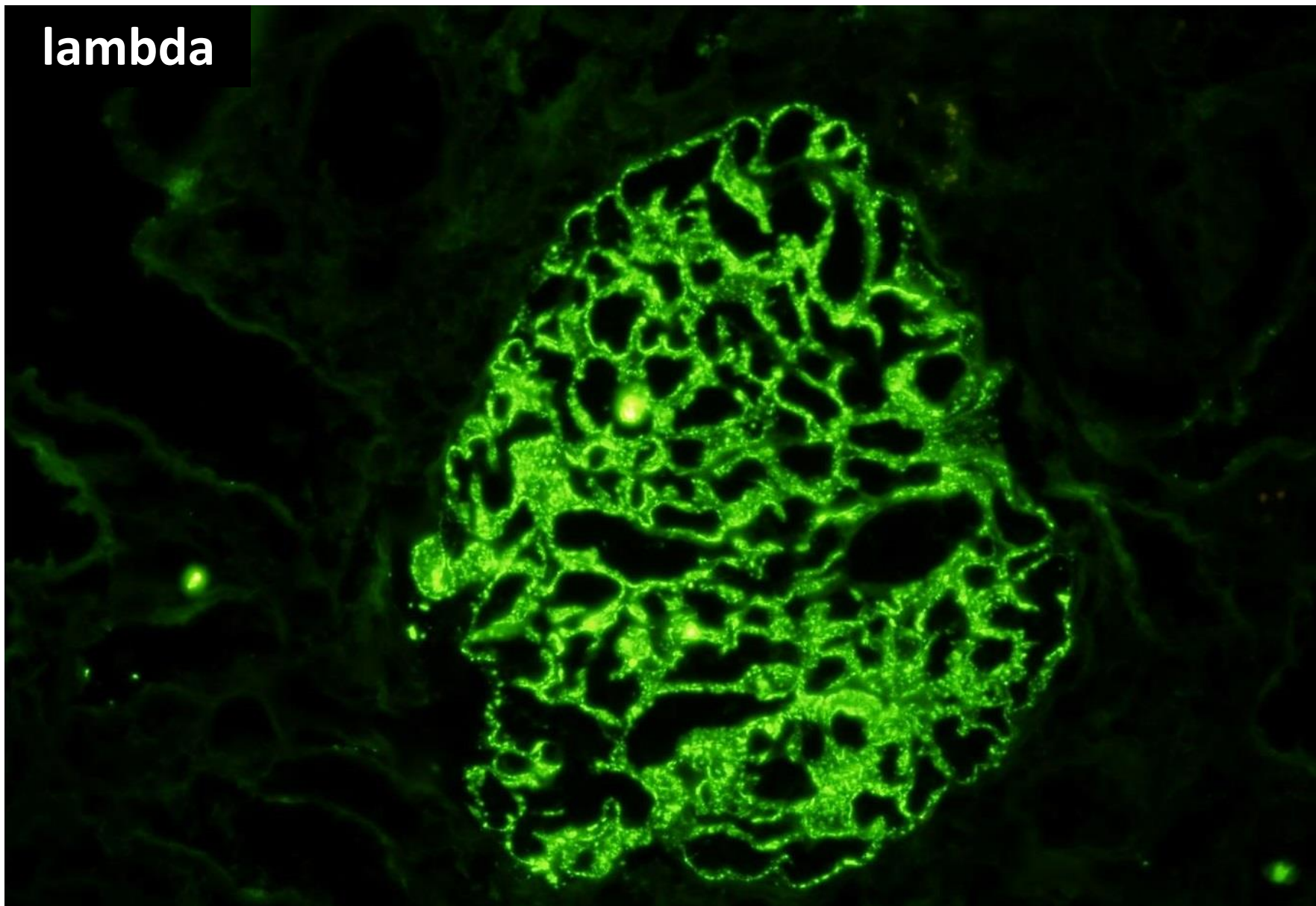
C1q



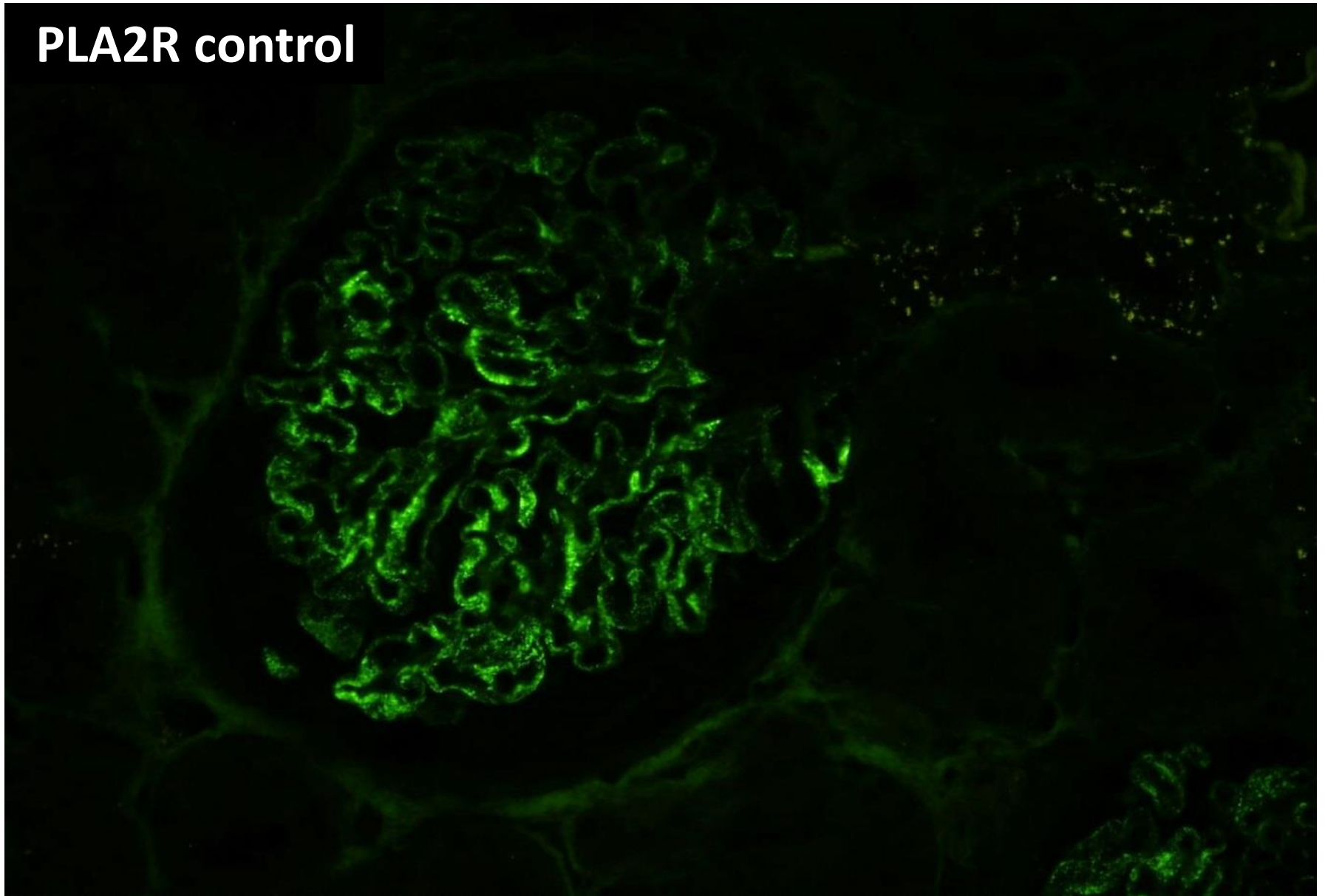
kappa



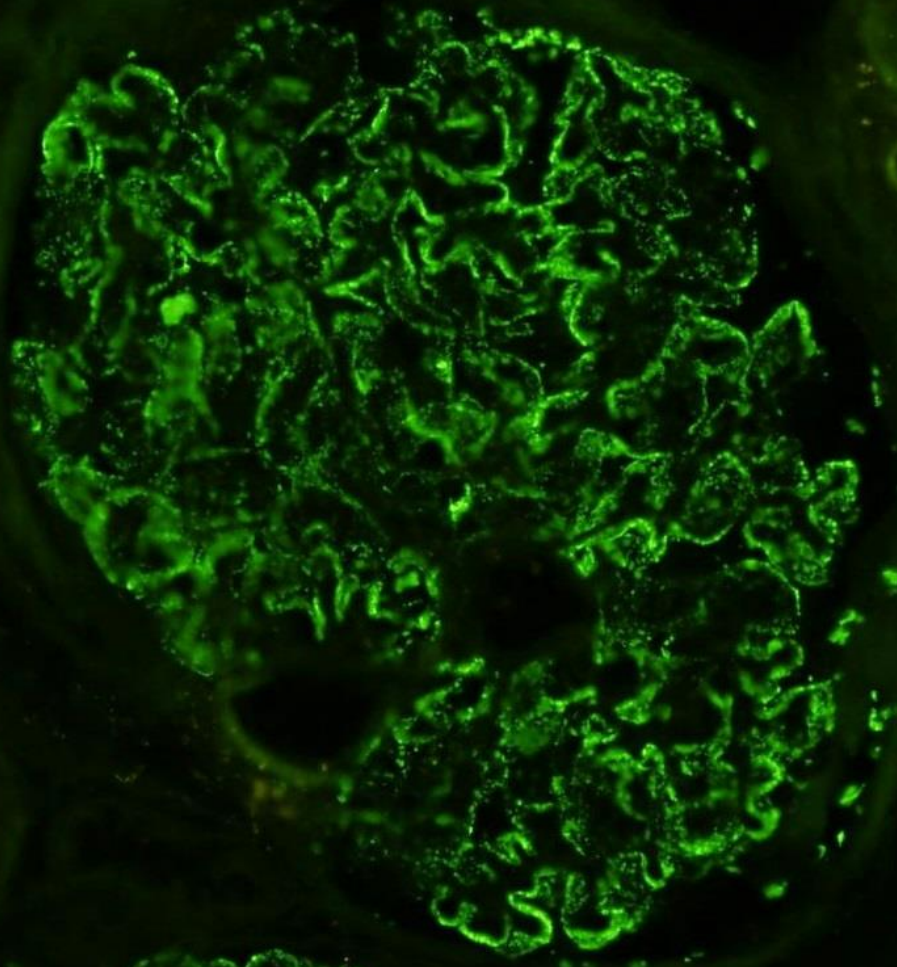
lambda

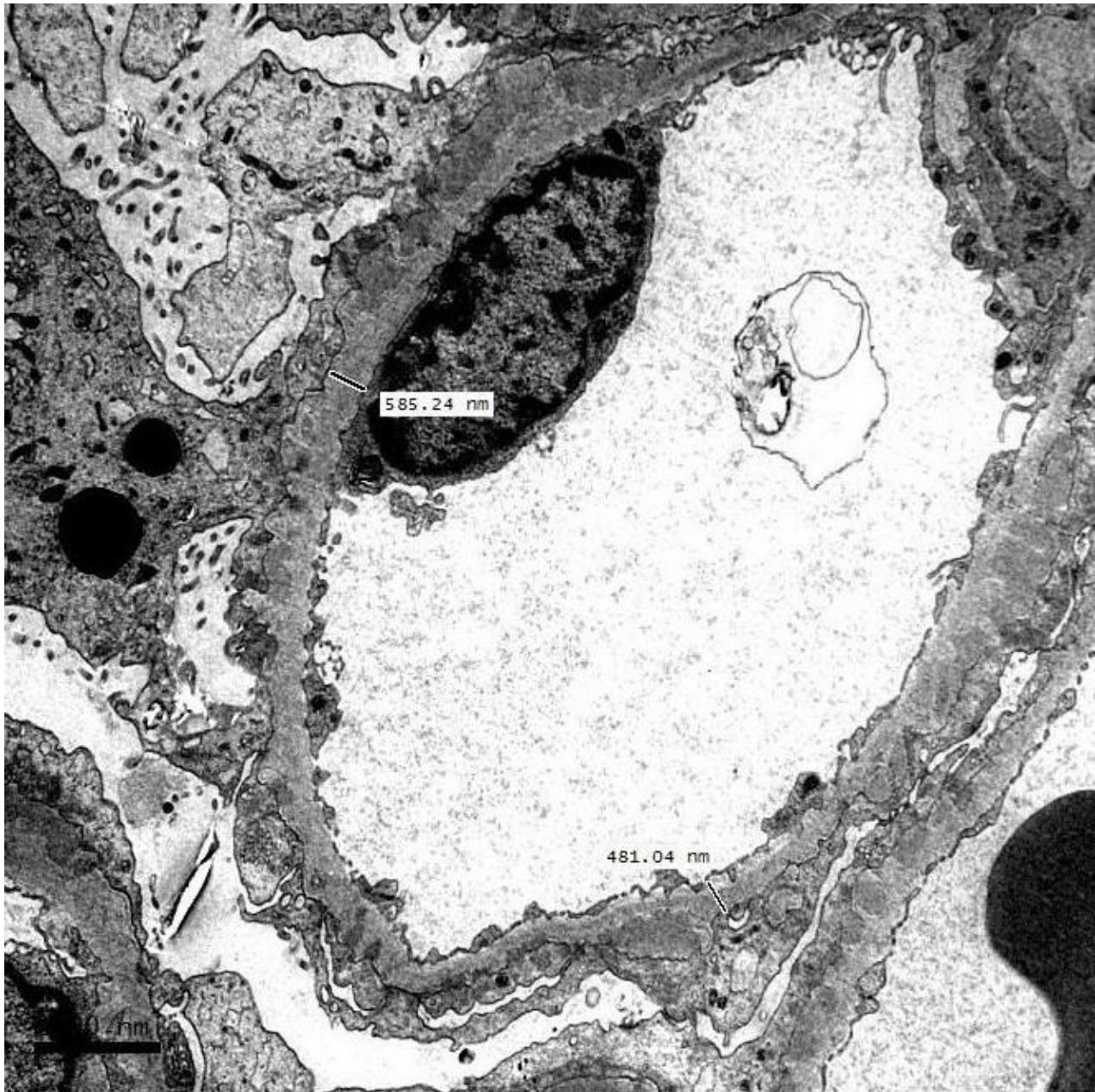


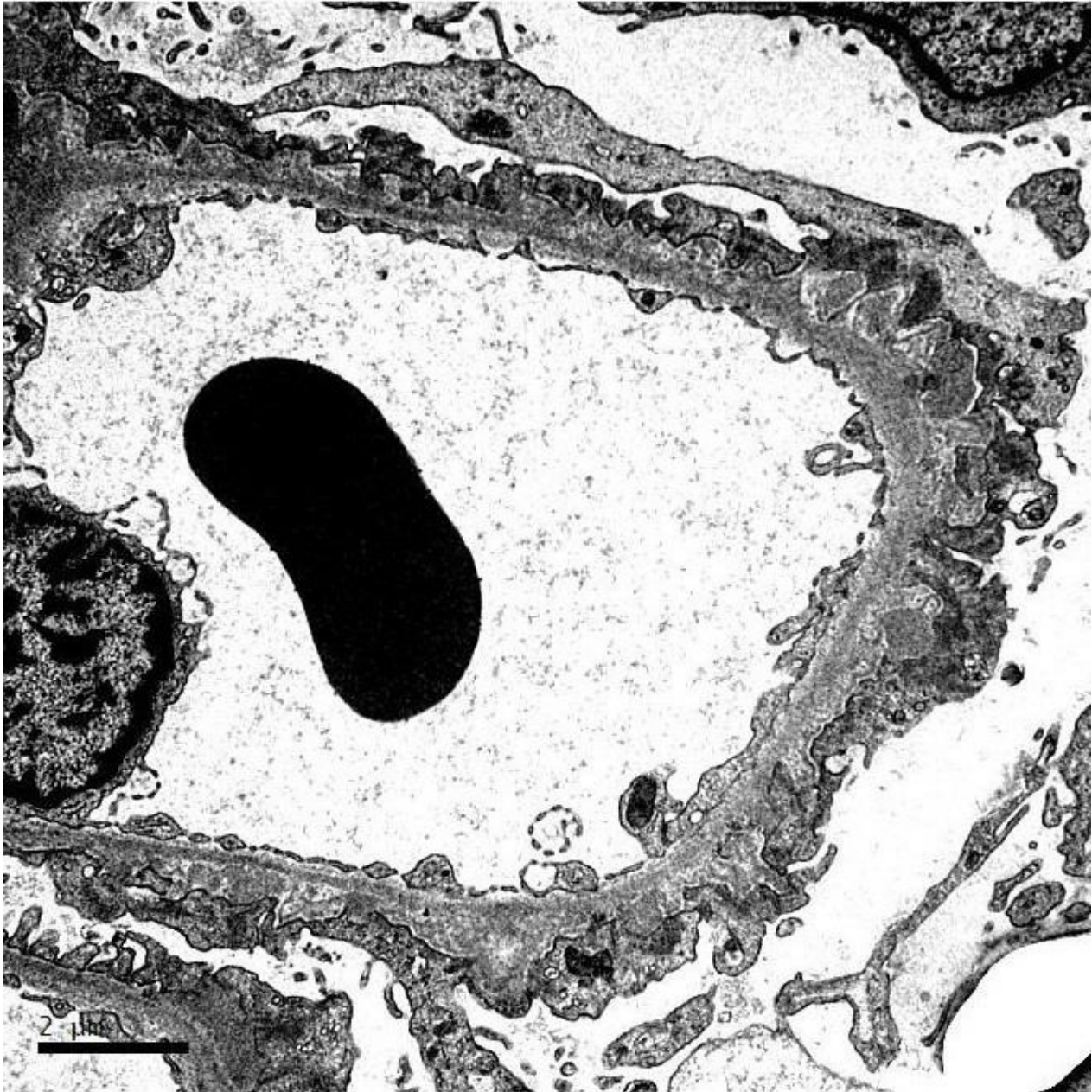
PLA2R control

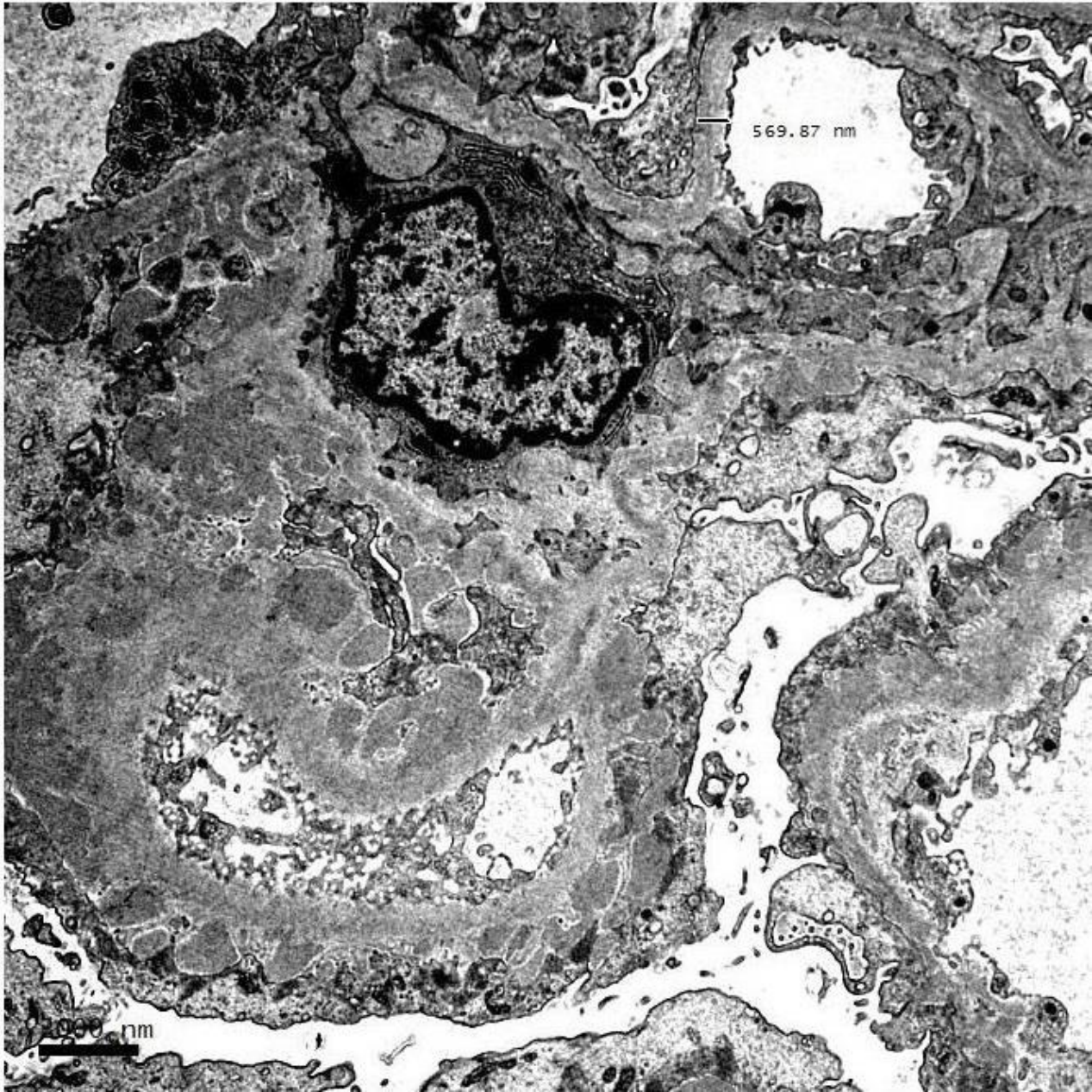


PLA2R













RENAL BIOPSY CLINICOPATHOLOGICAL WORKSHOP 2018



PATHOLOGY



Division of Pathology
Singapore General Hospital



Department of Renal Medicine
Singapore General Hospital



MEDICINE