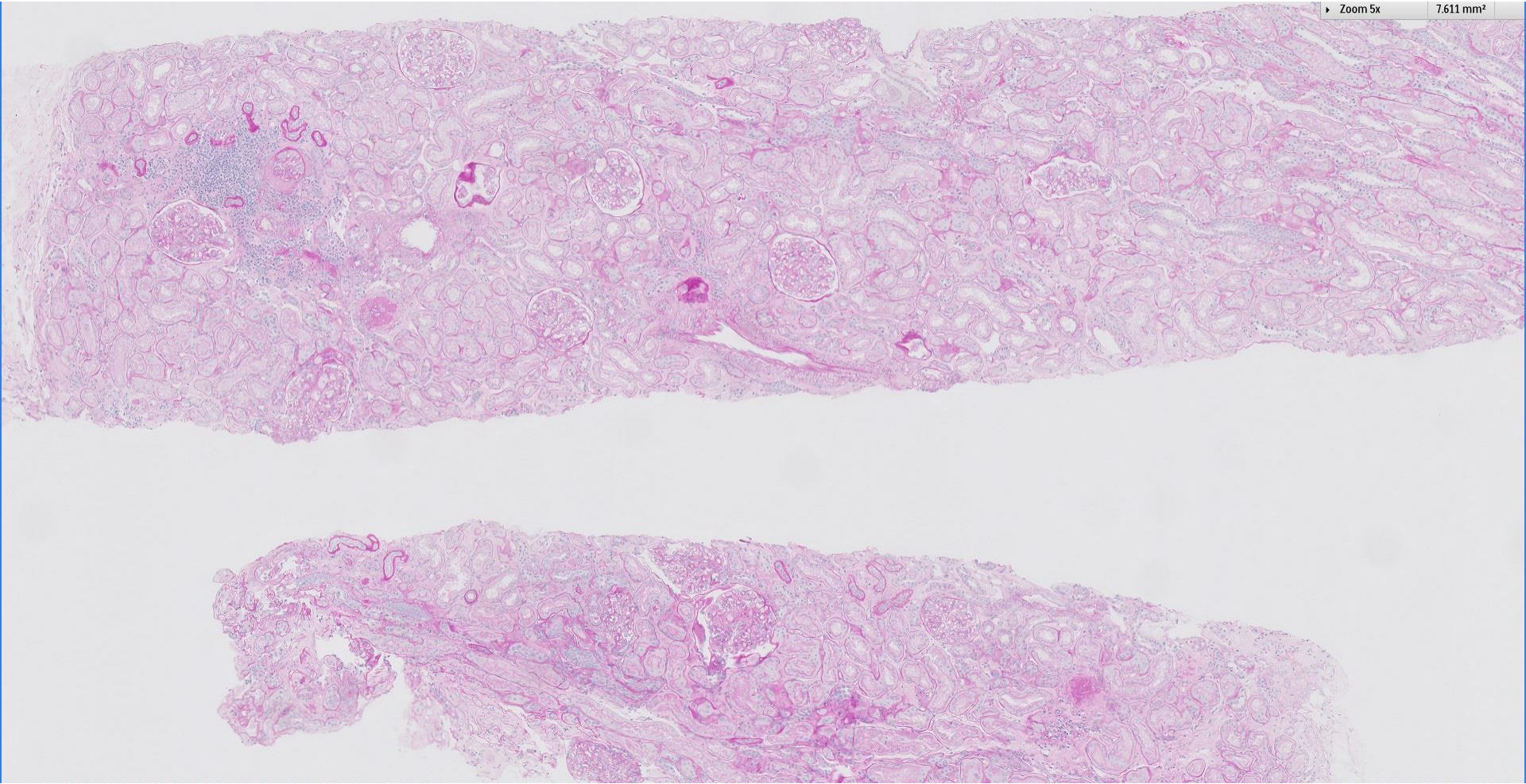


Case 13

75 year old female with pedal oedema for 3 months. Serum albumin 22, UPCR 12g/g, antiPLA2R Ab 167 IU/ml.

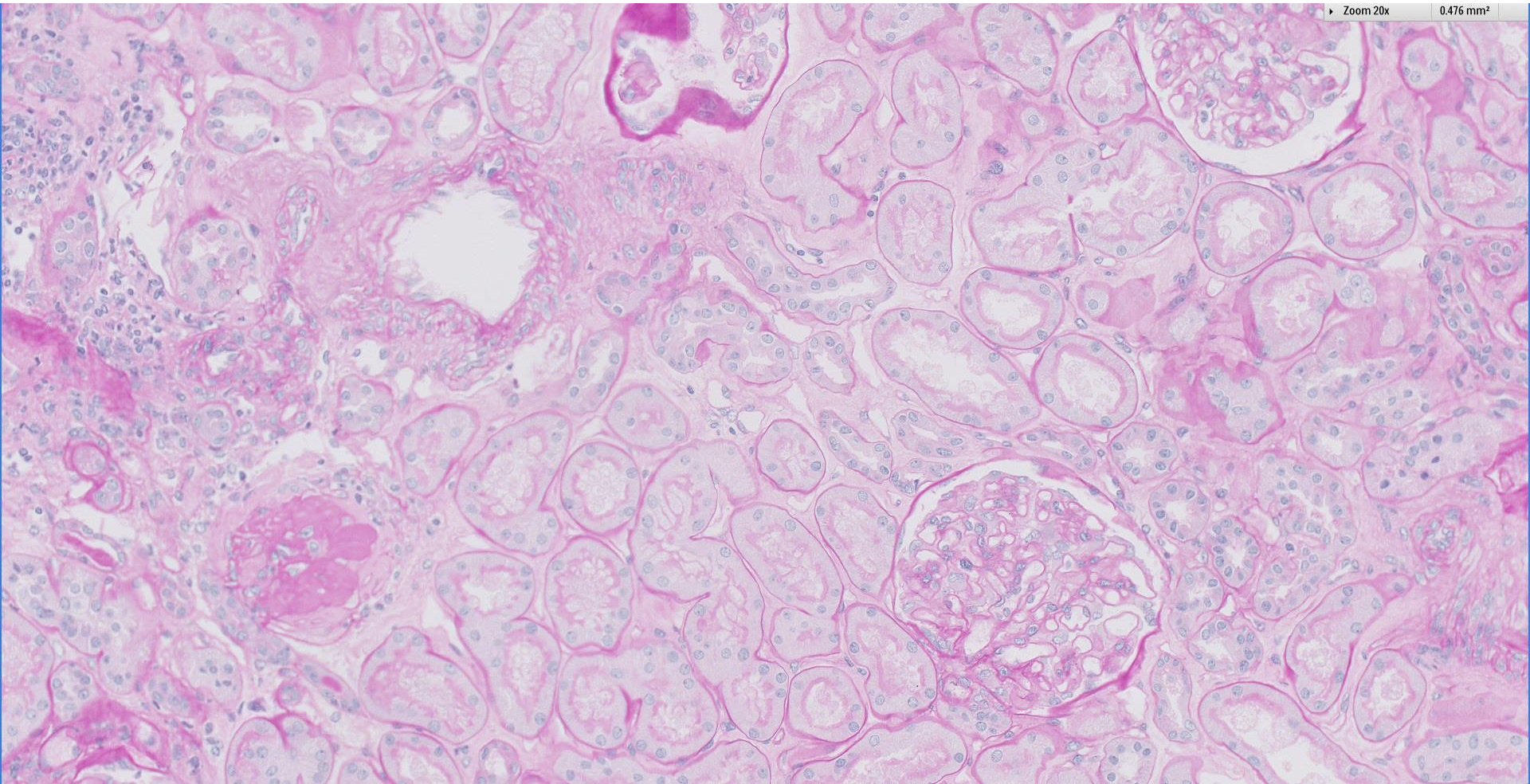
Zoom 5x

7.611 mm²



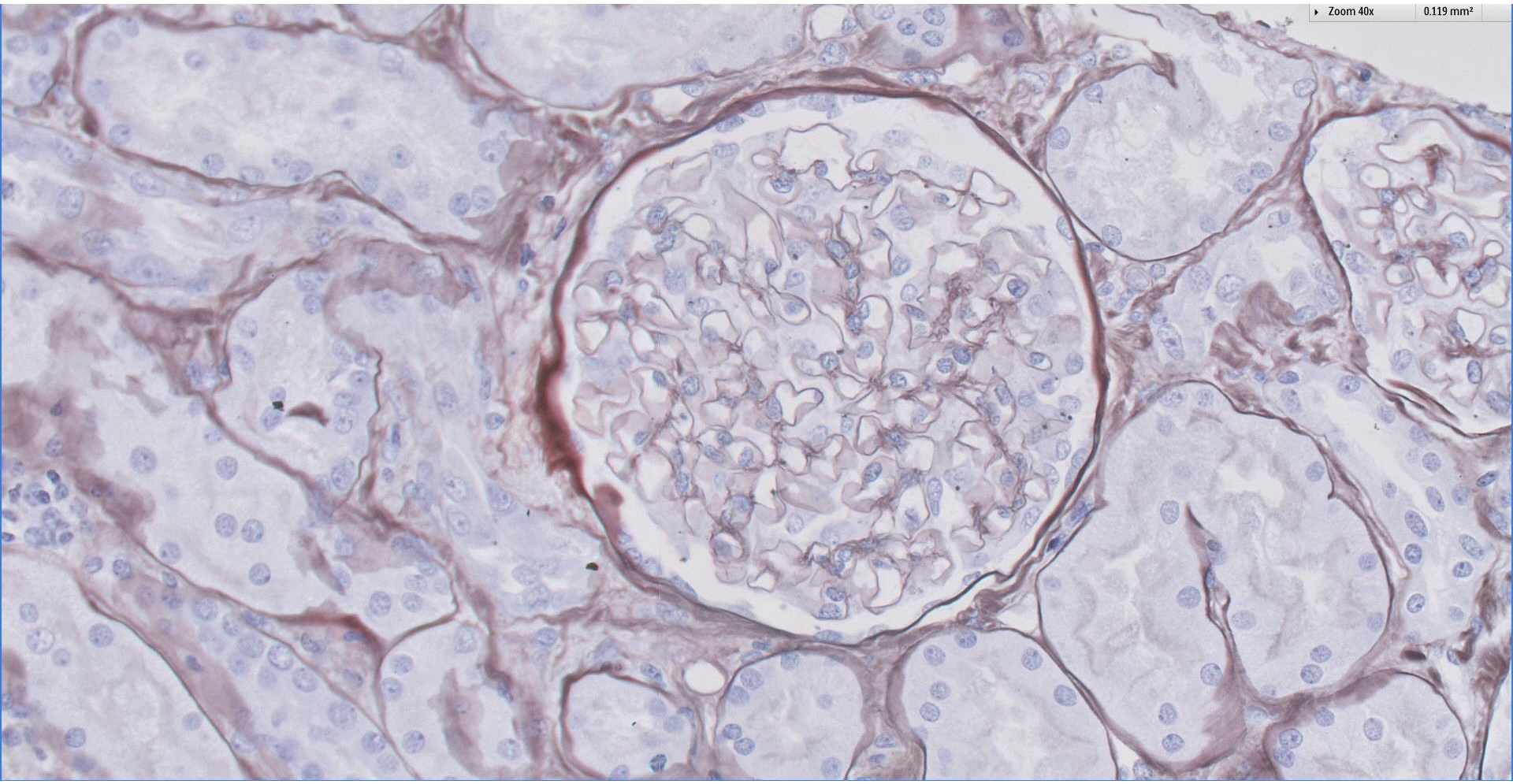
Zoom 20x

0.476 mm²

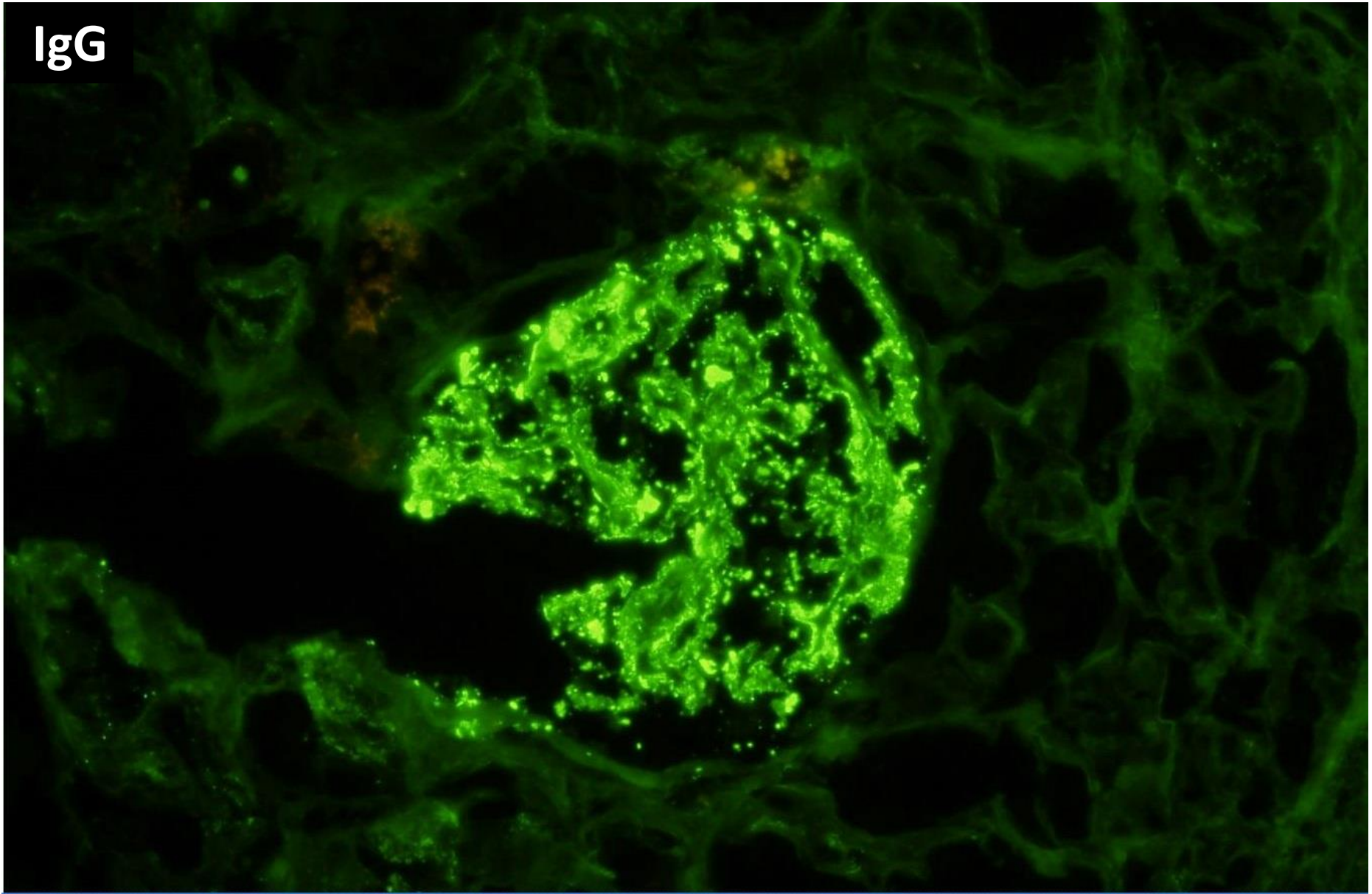


Zoom 40x

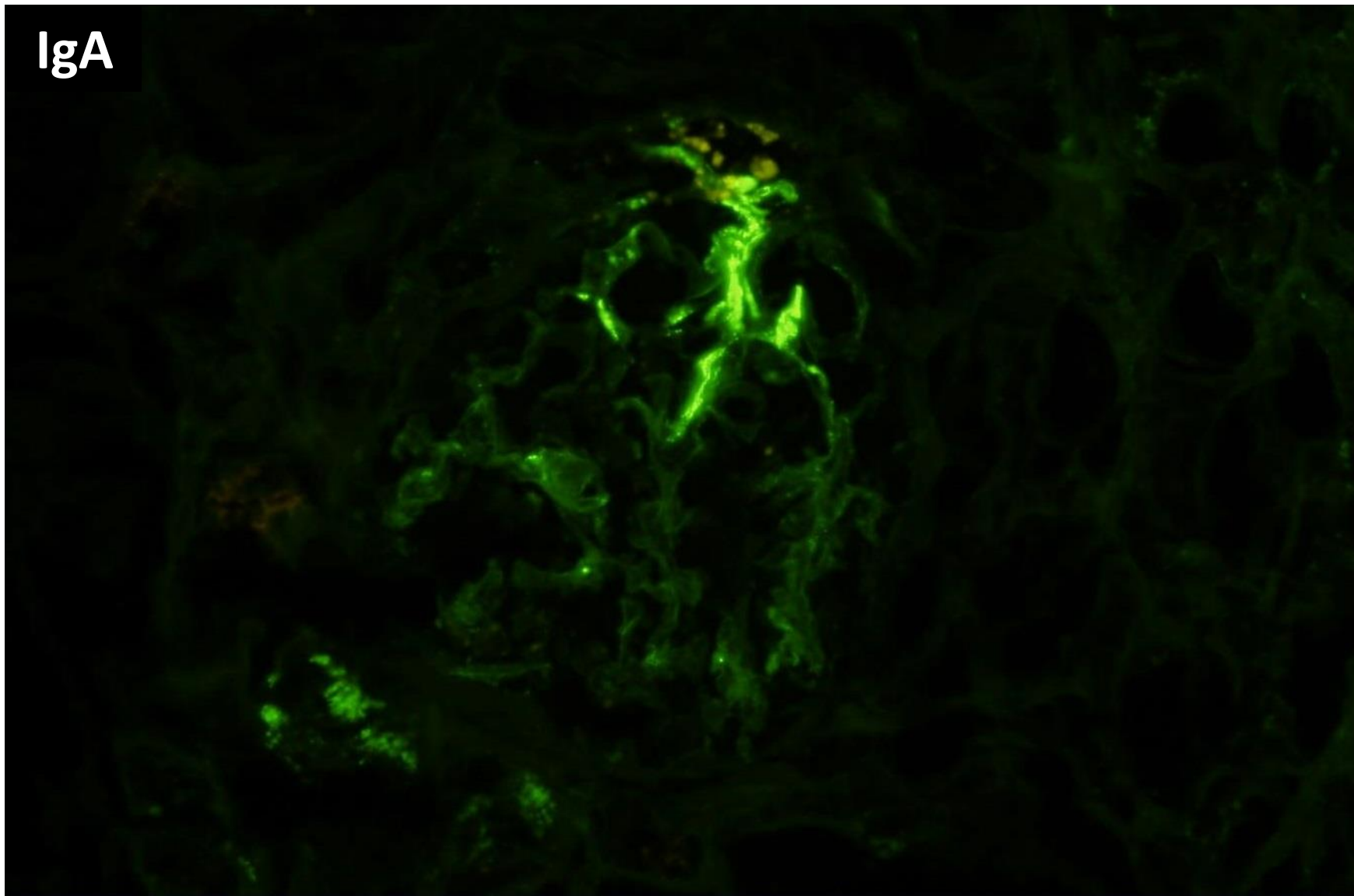
0.119 mm²



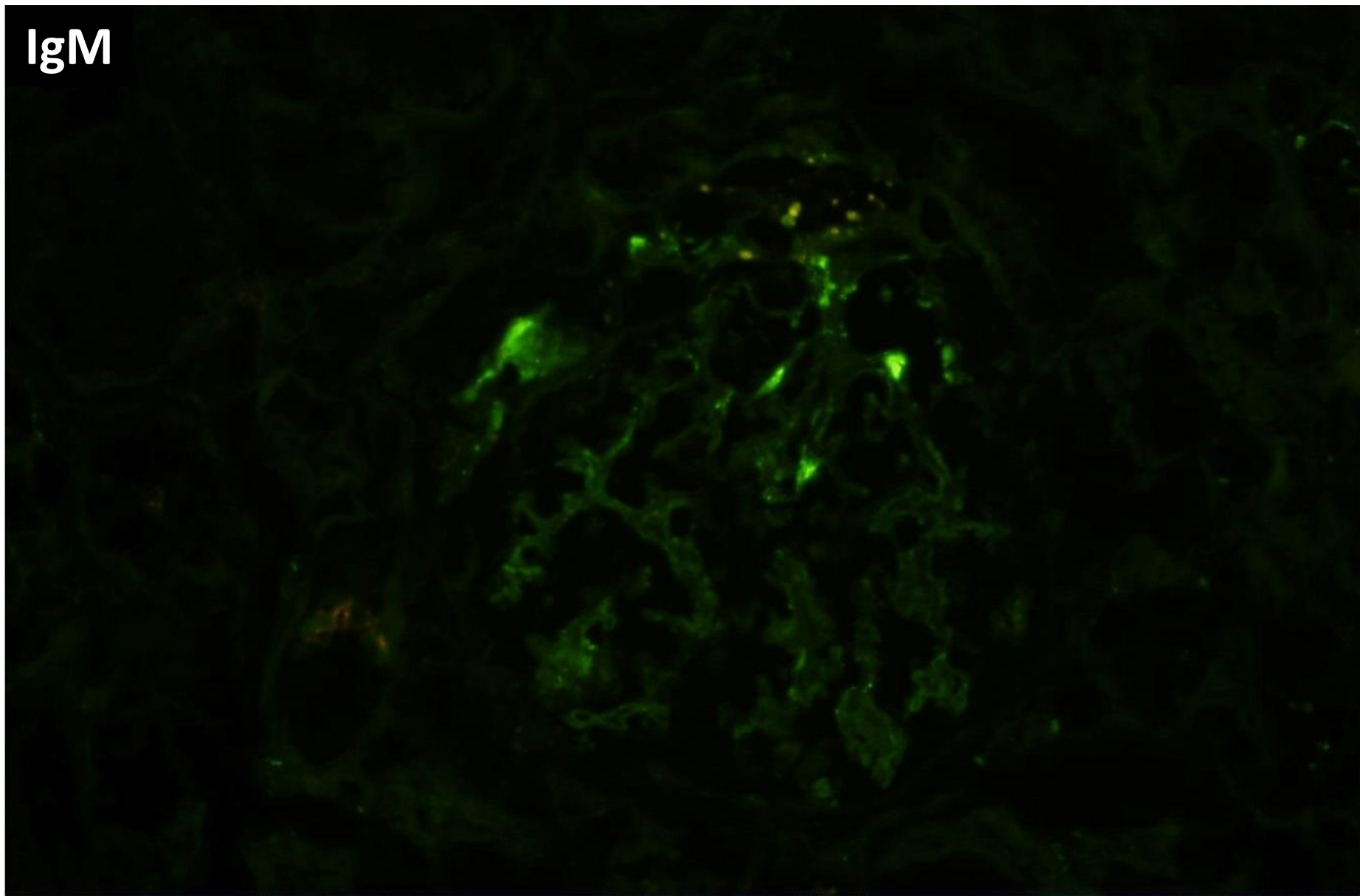
IgG



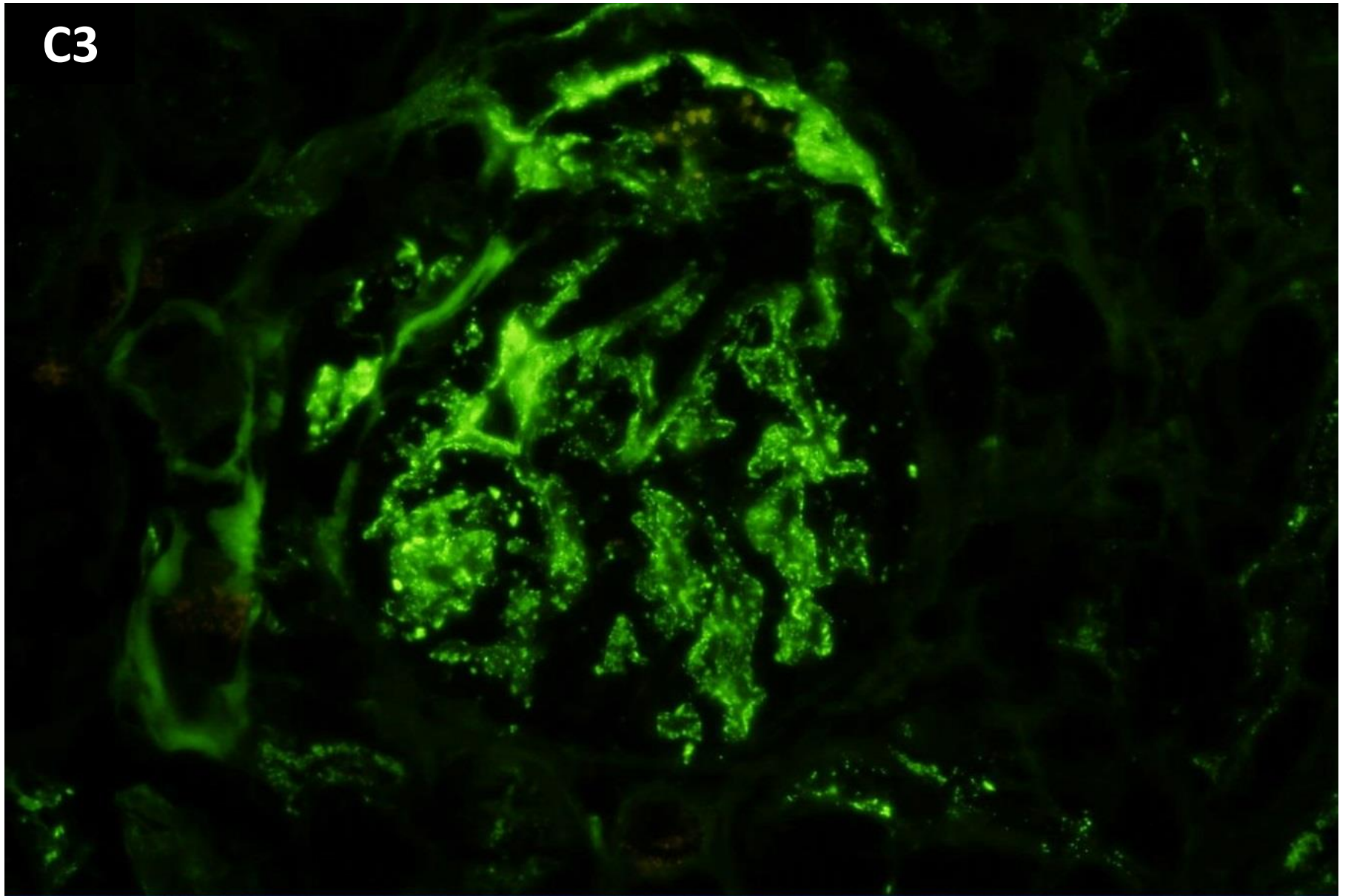
IgA



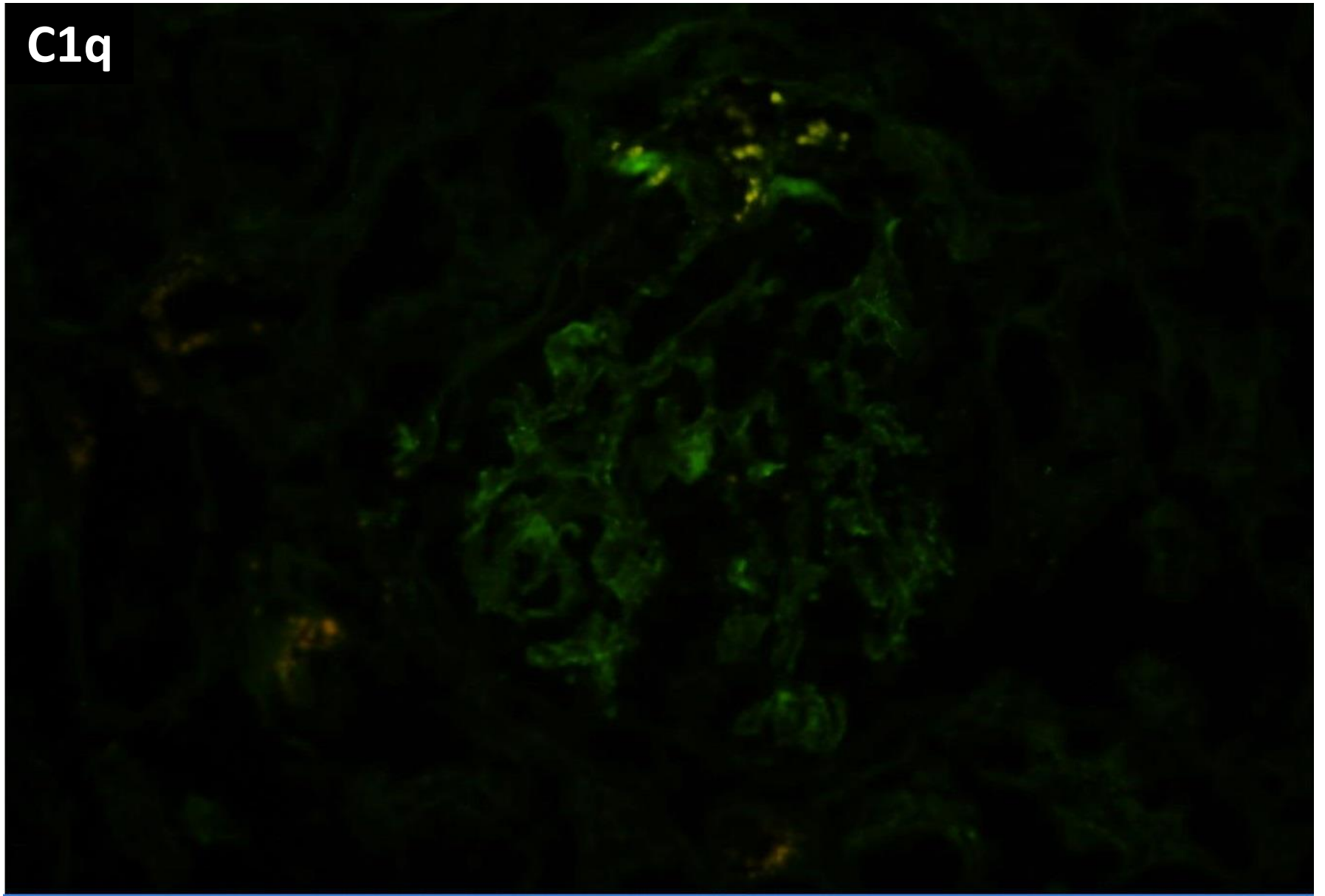
IgM



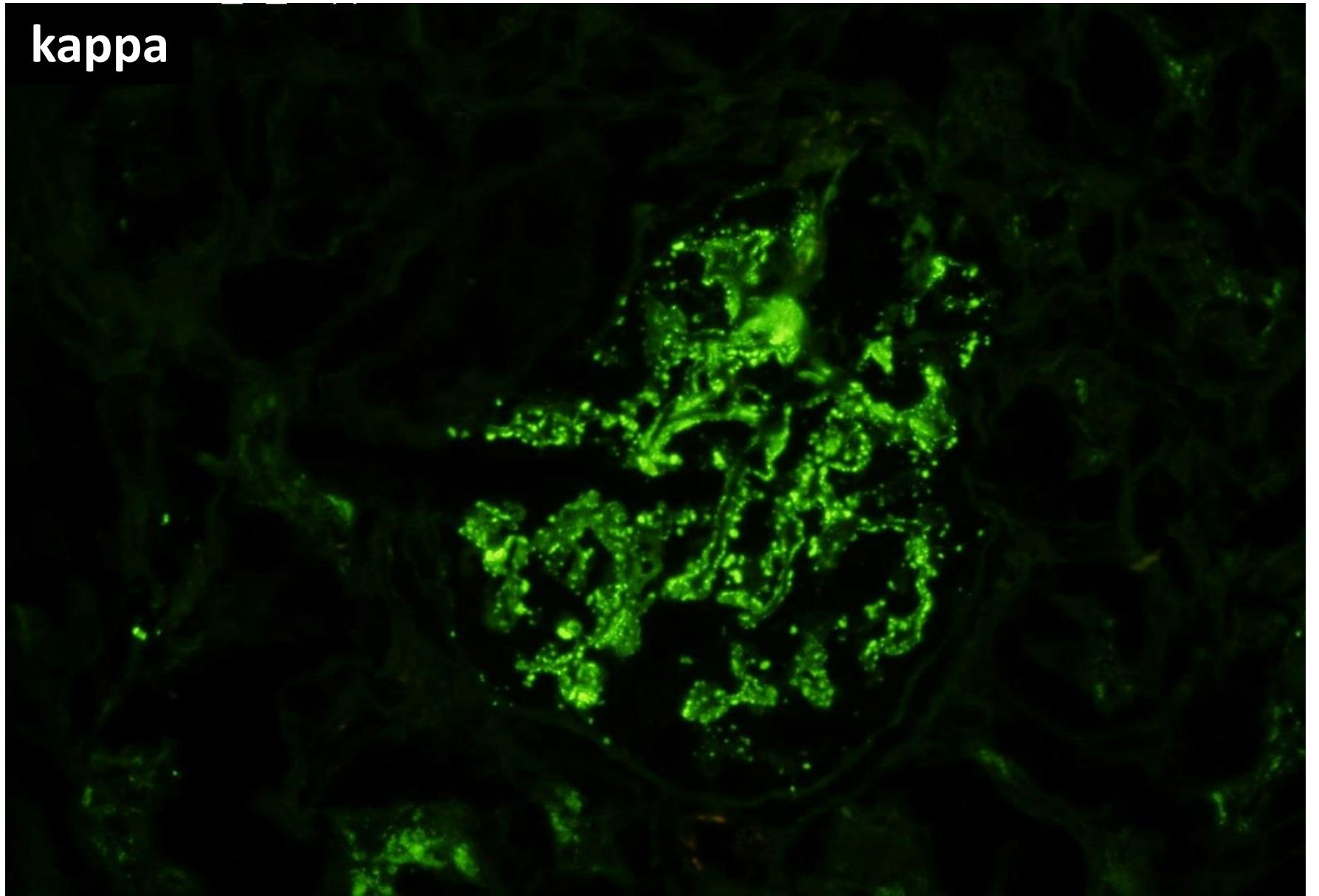
C3



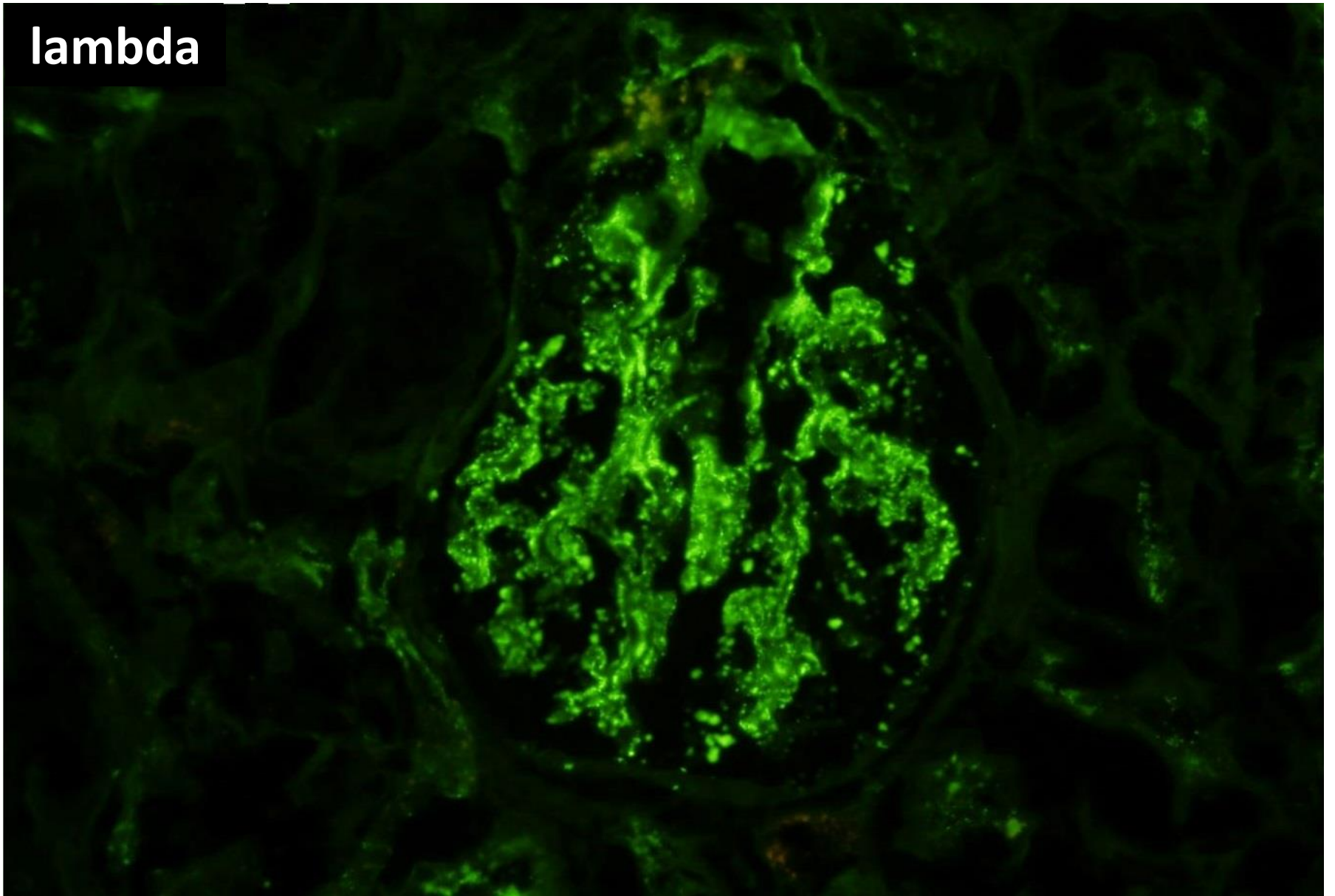
C1q



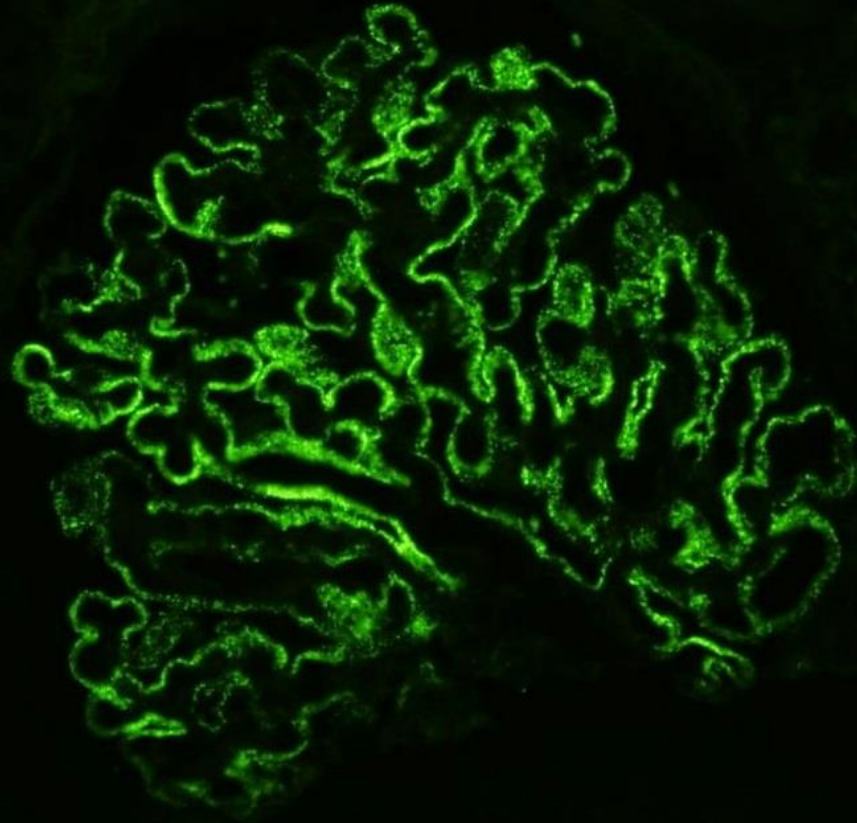
kappa



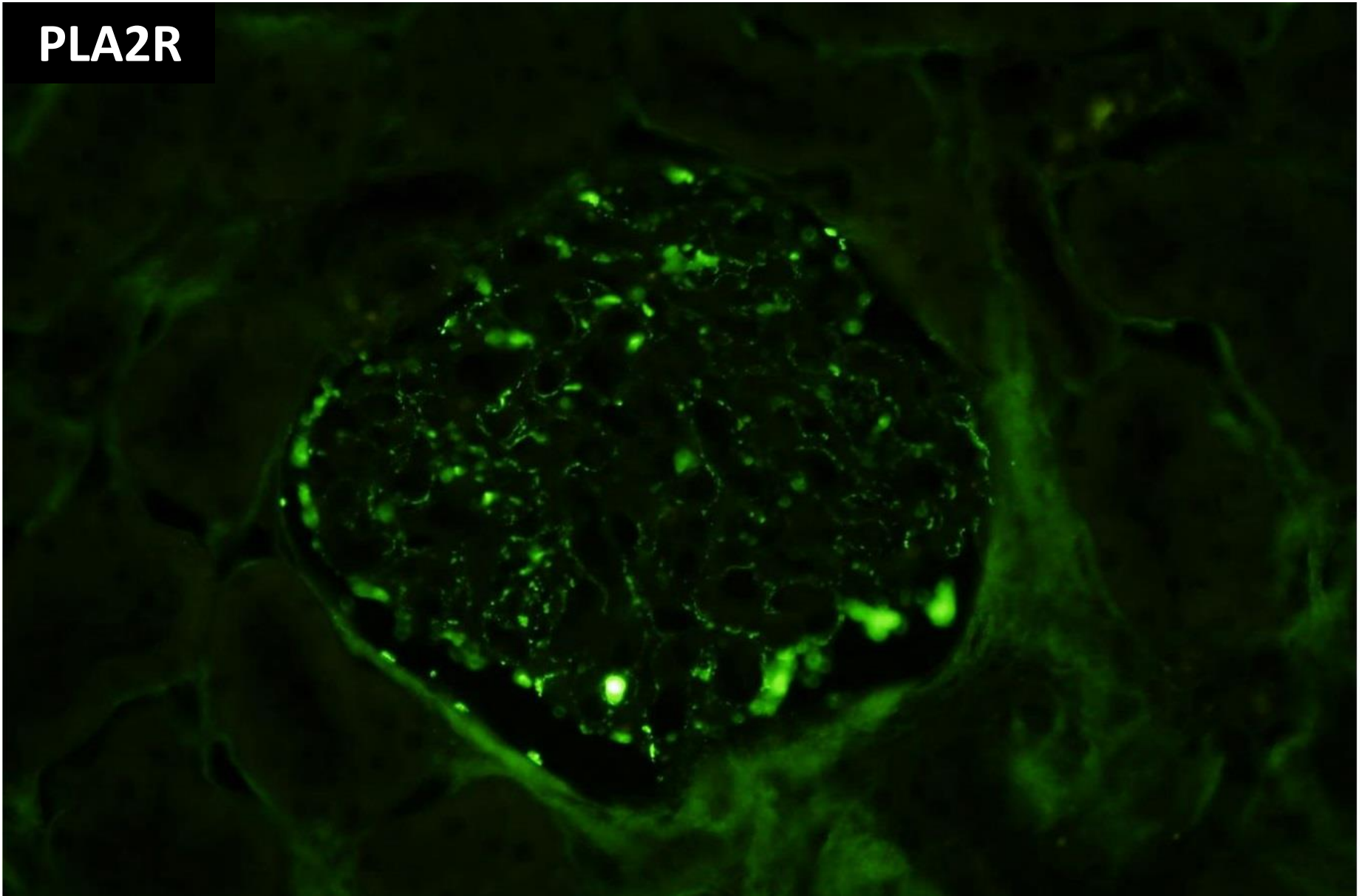
lambda

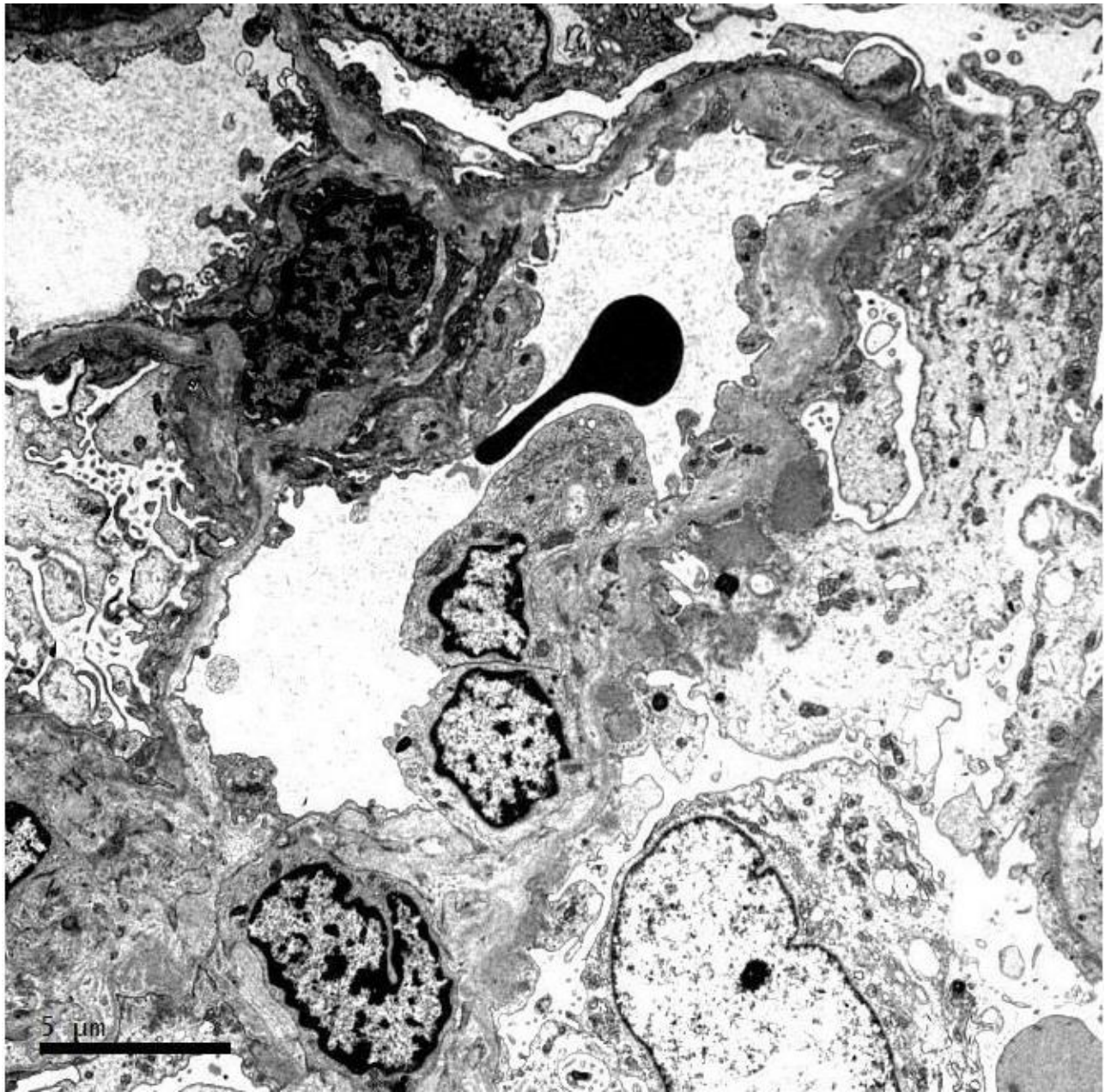


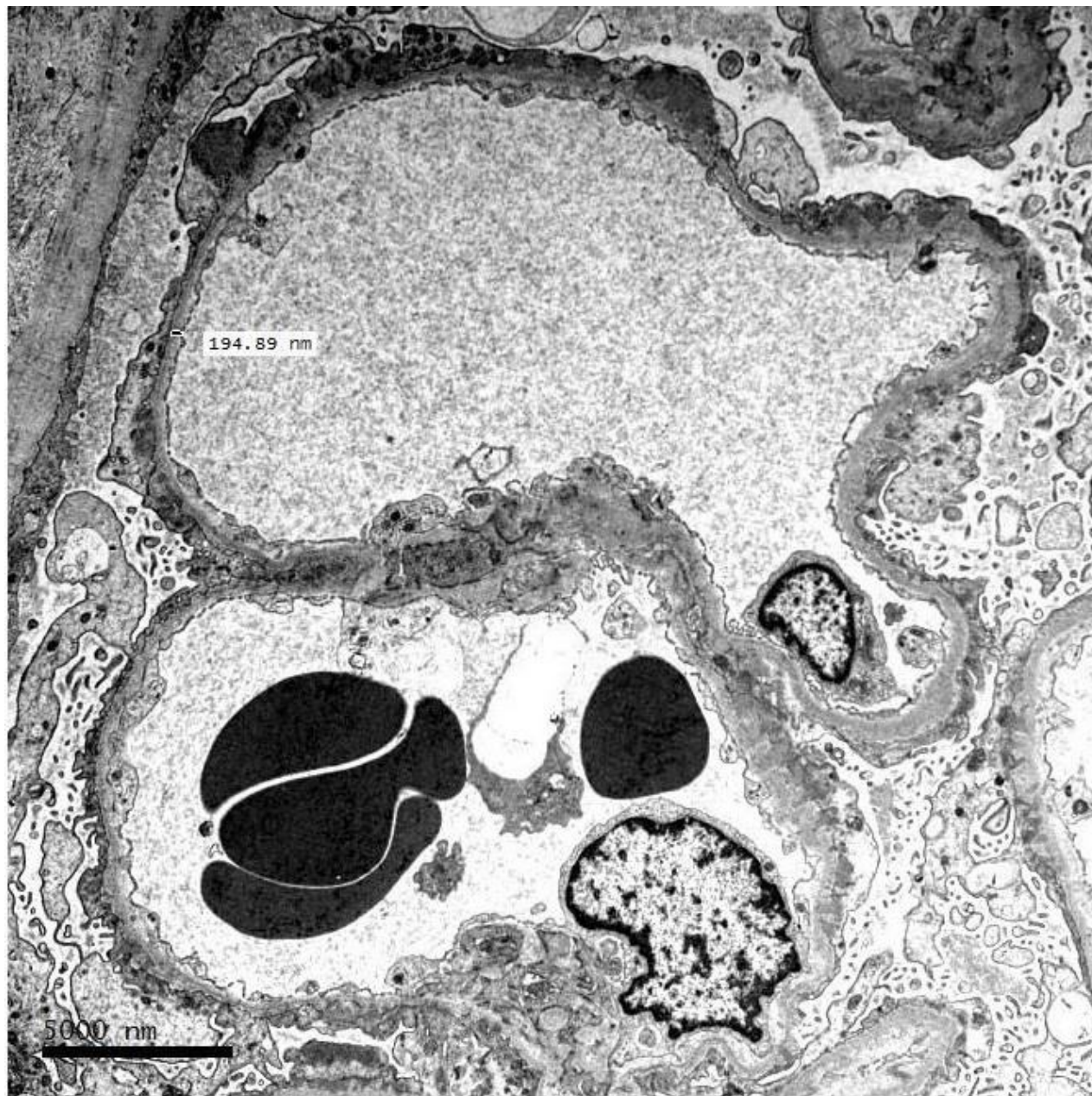
PLA2R control

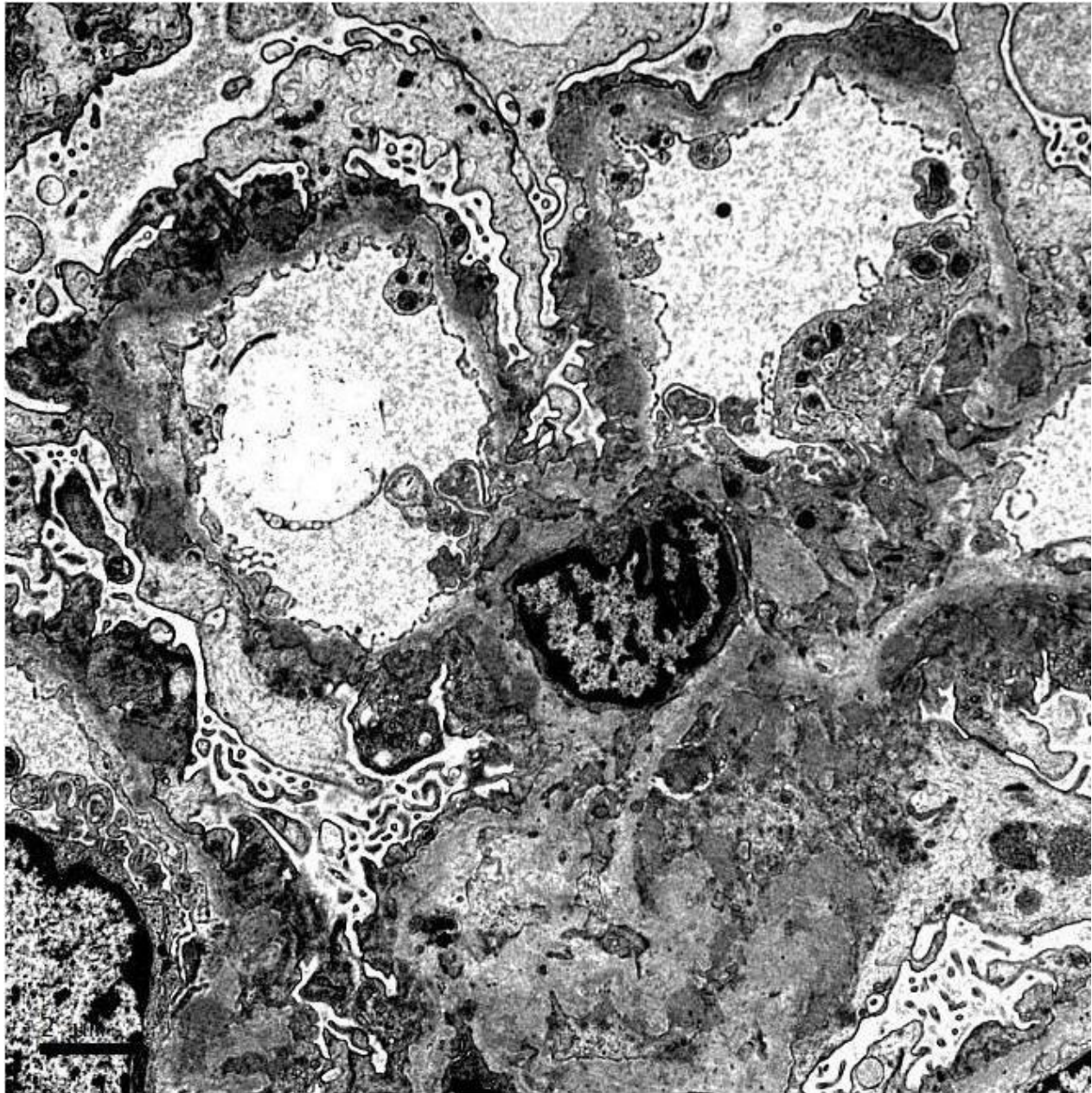


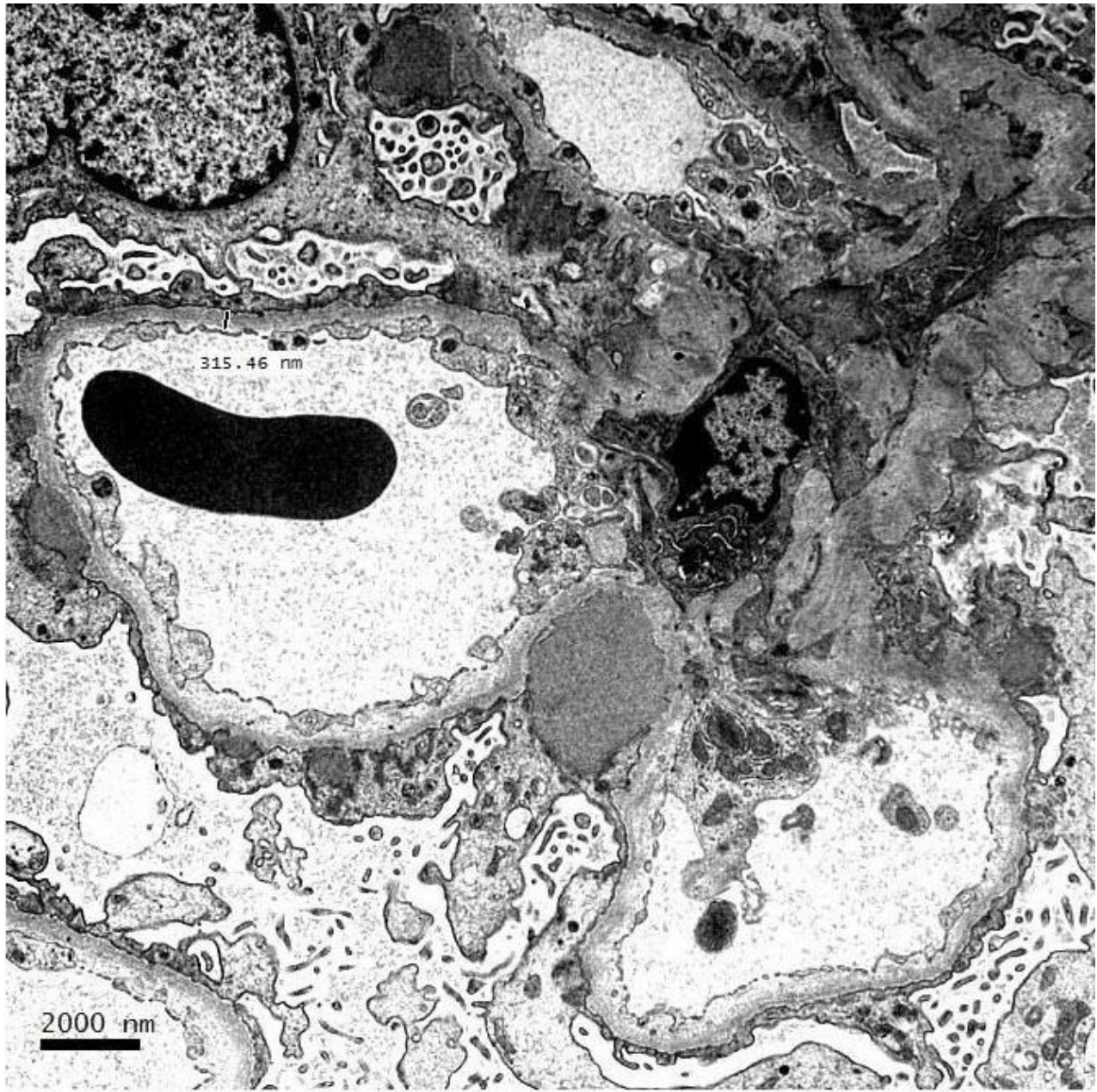
PLA2R













RENAL BIOPSY CLINICOPATHOLOGICAL WORKSHOP 2018



PATHOLOGY



Division of Pathology
Singapore General Hospital



Department of Renal Medicine
Singapore General Hospital



MEDICINE