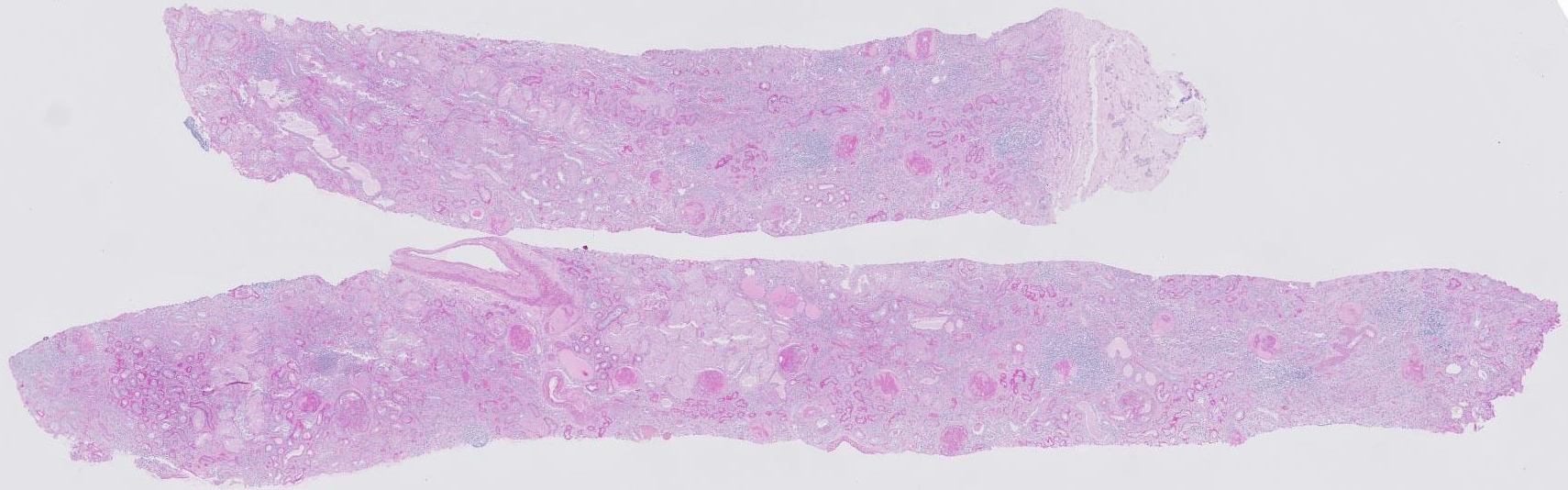
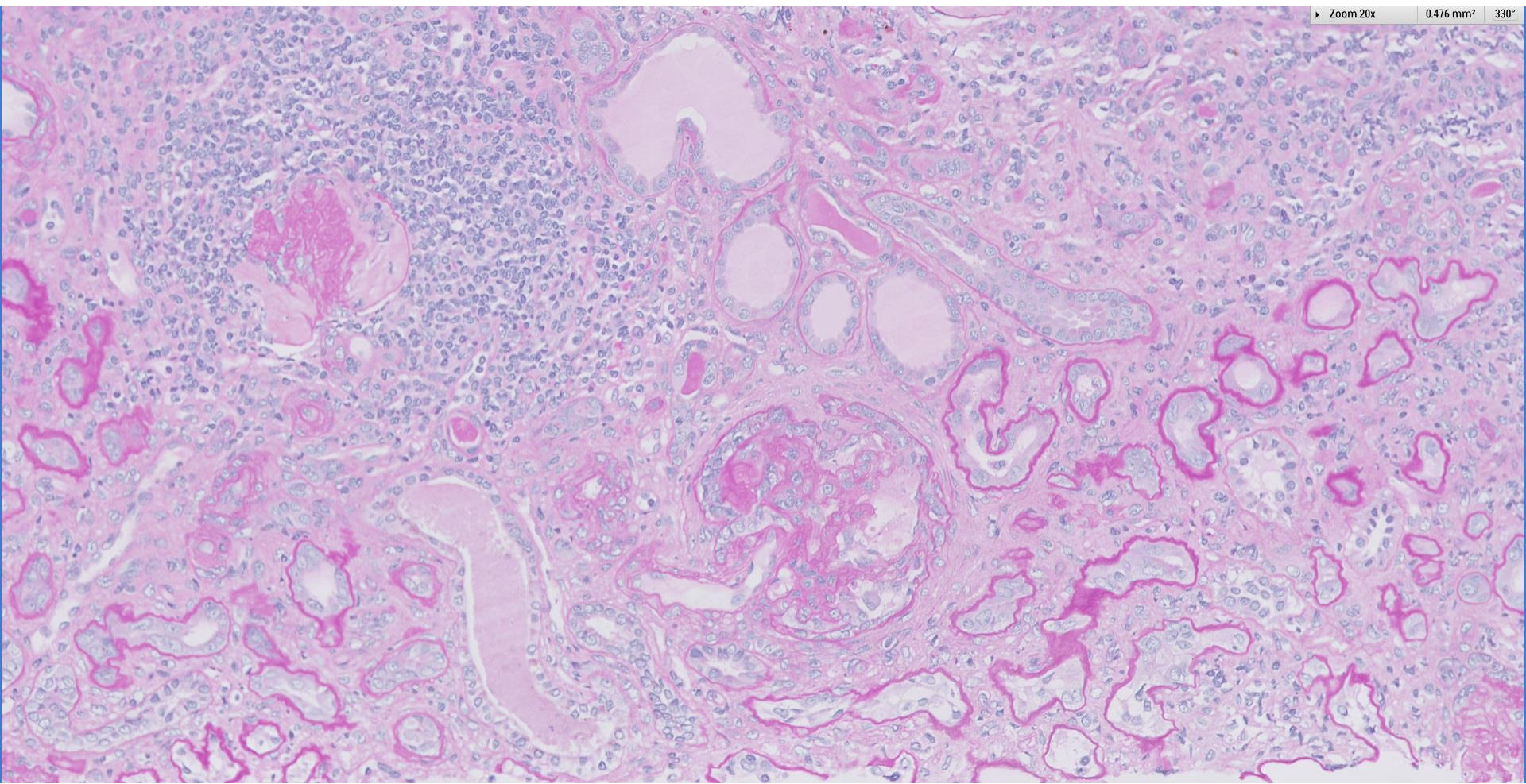
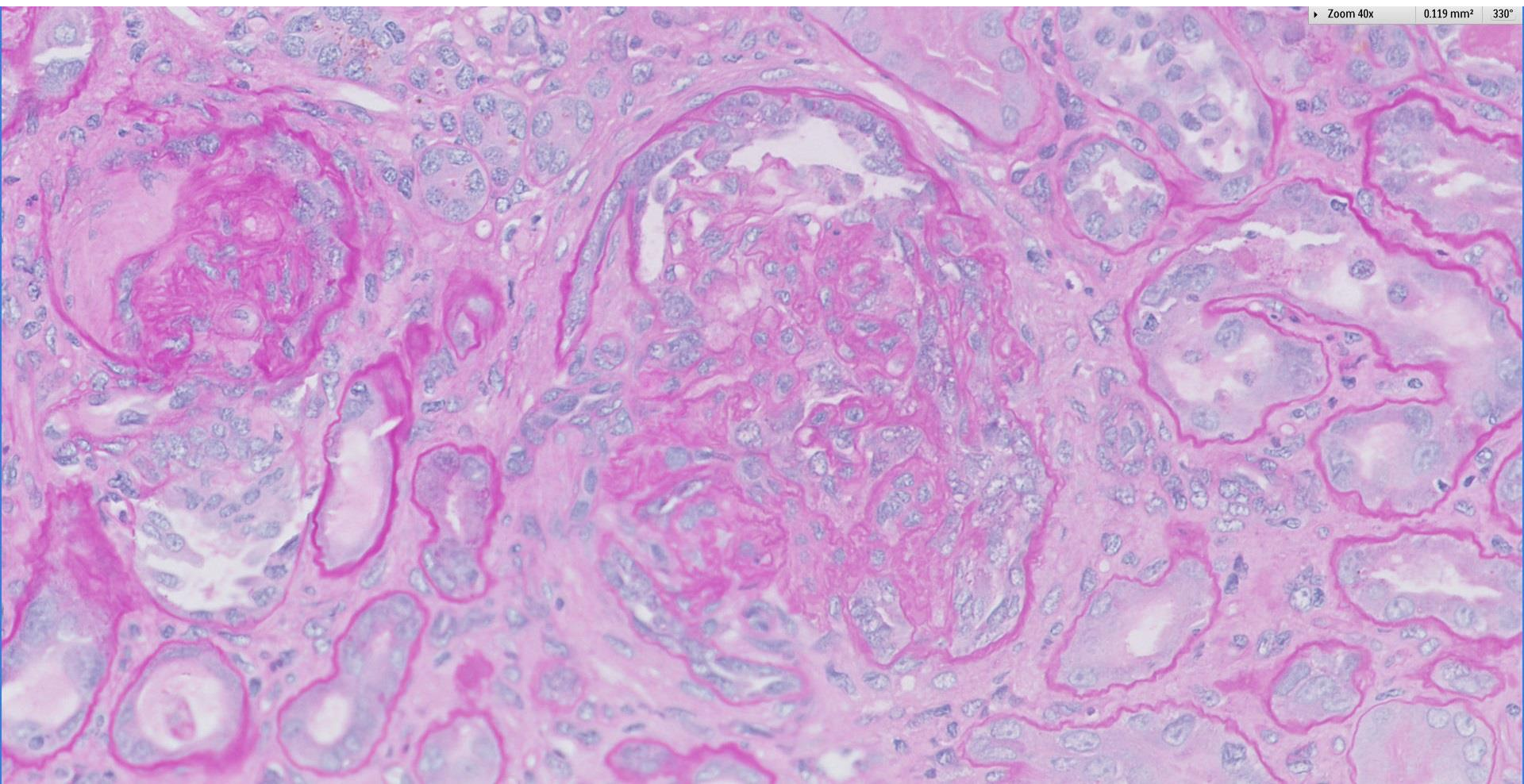


## *Case 11*

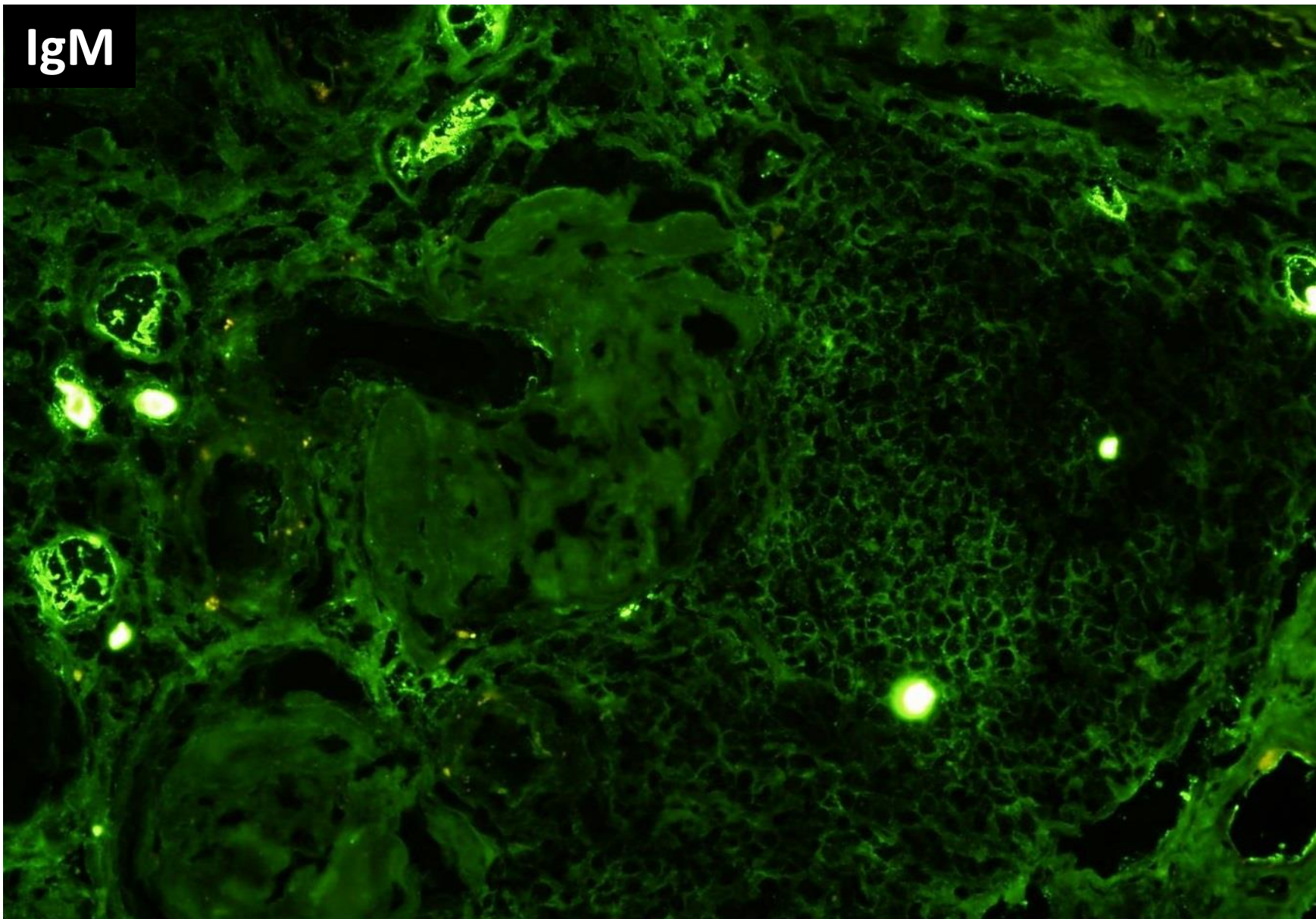
60 year old male with progressive chronic kidney disease,  
query secondary to rapidly progressive glomerulonephritis.  
Urine phase contrast showed dysmorphic red blood cells.  
Anti-MPO, anti-dsDNA positive.  
Background recurrent urolithiasis, nephrocalcinosis.



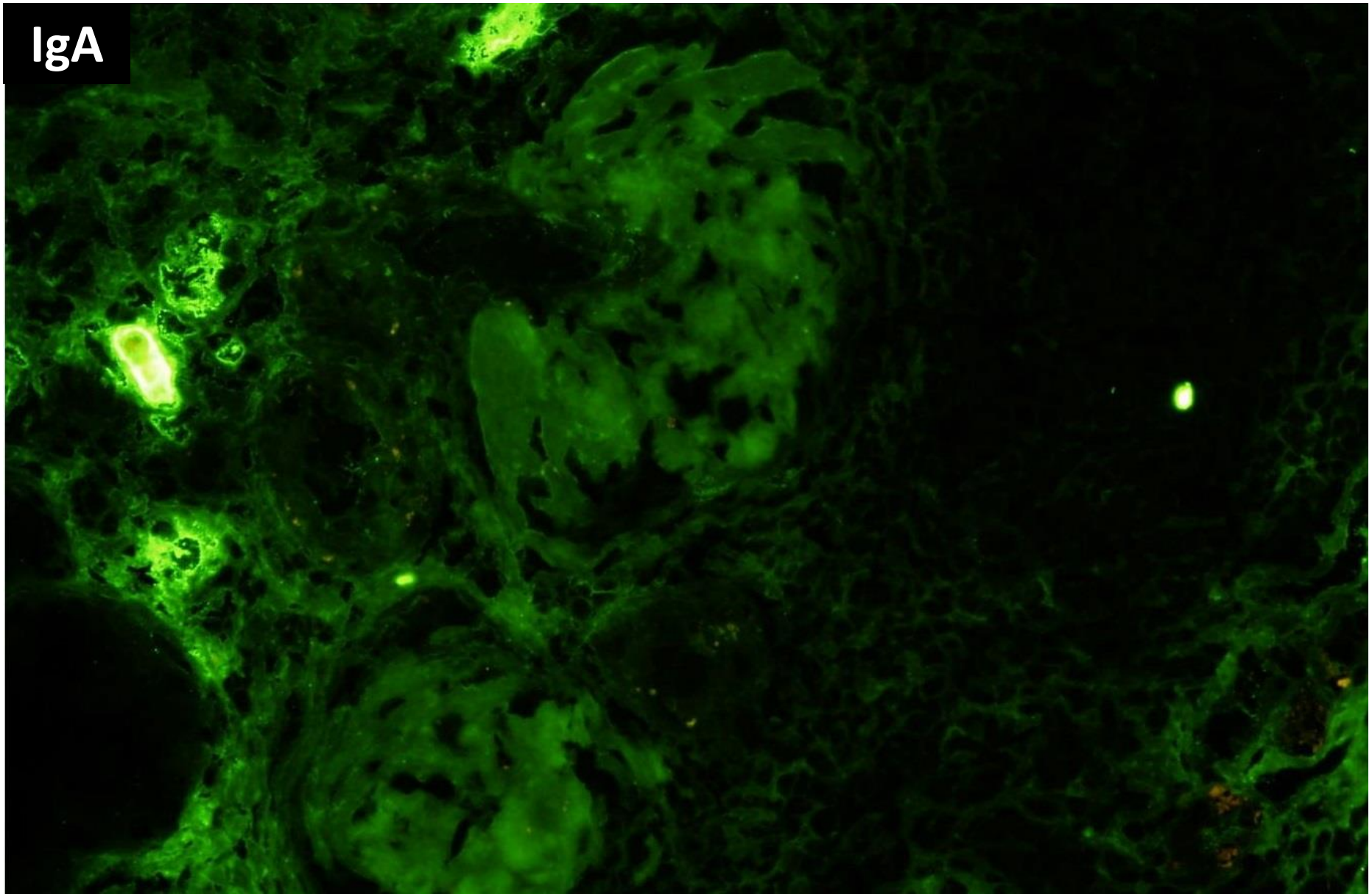




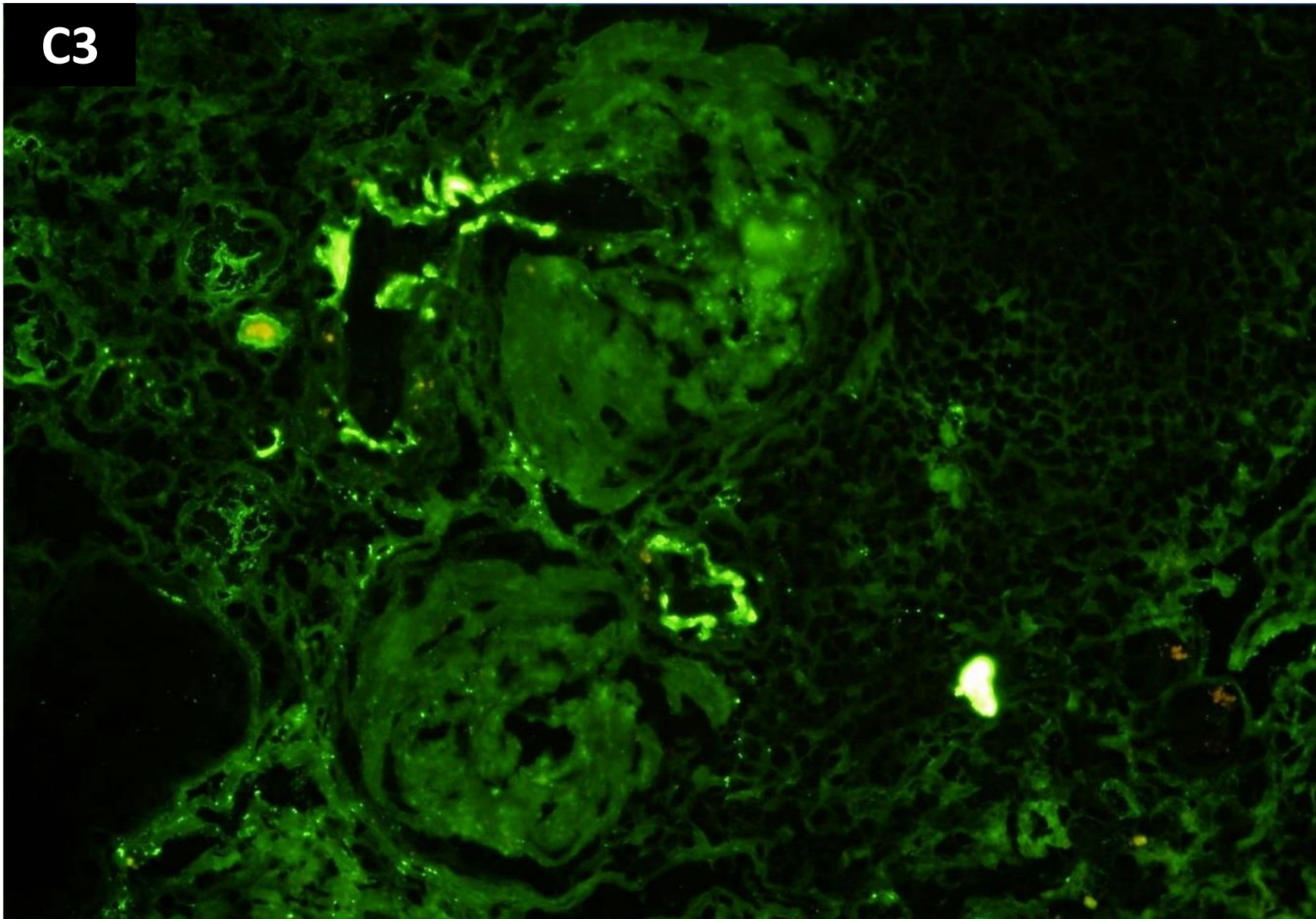
IgM

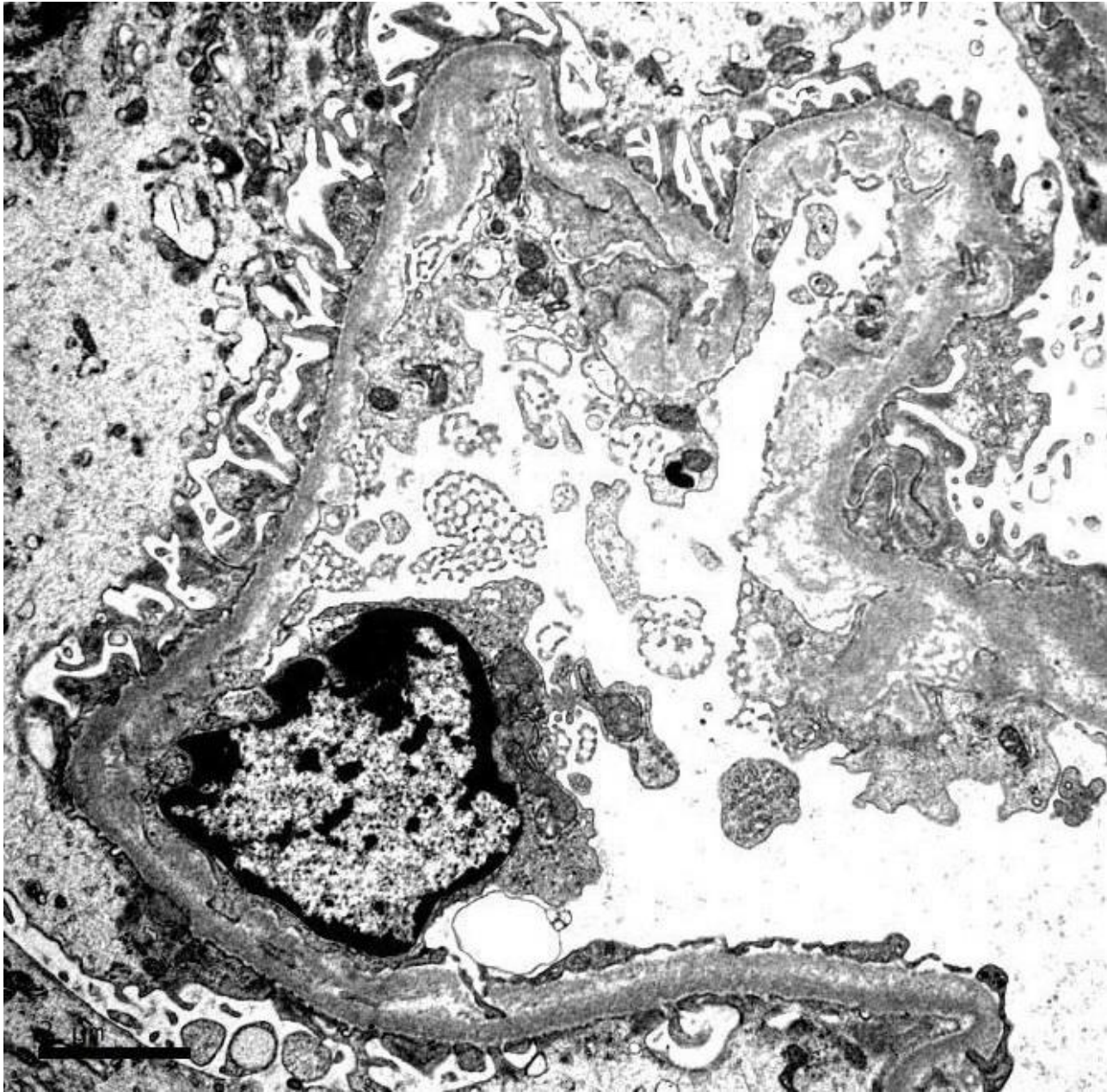


IgA

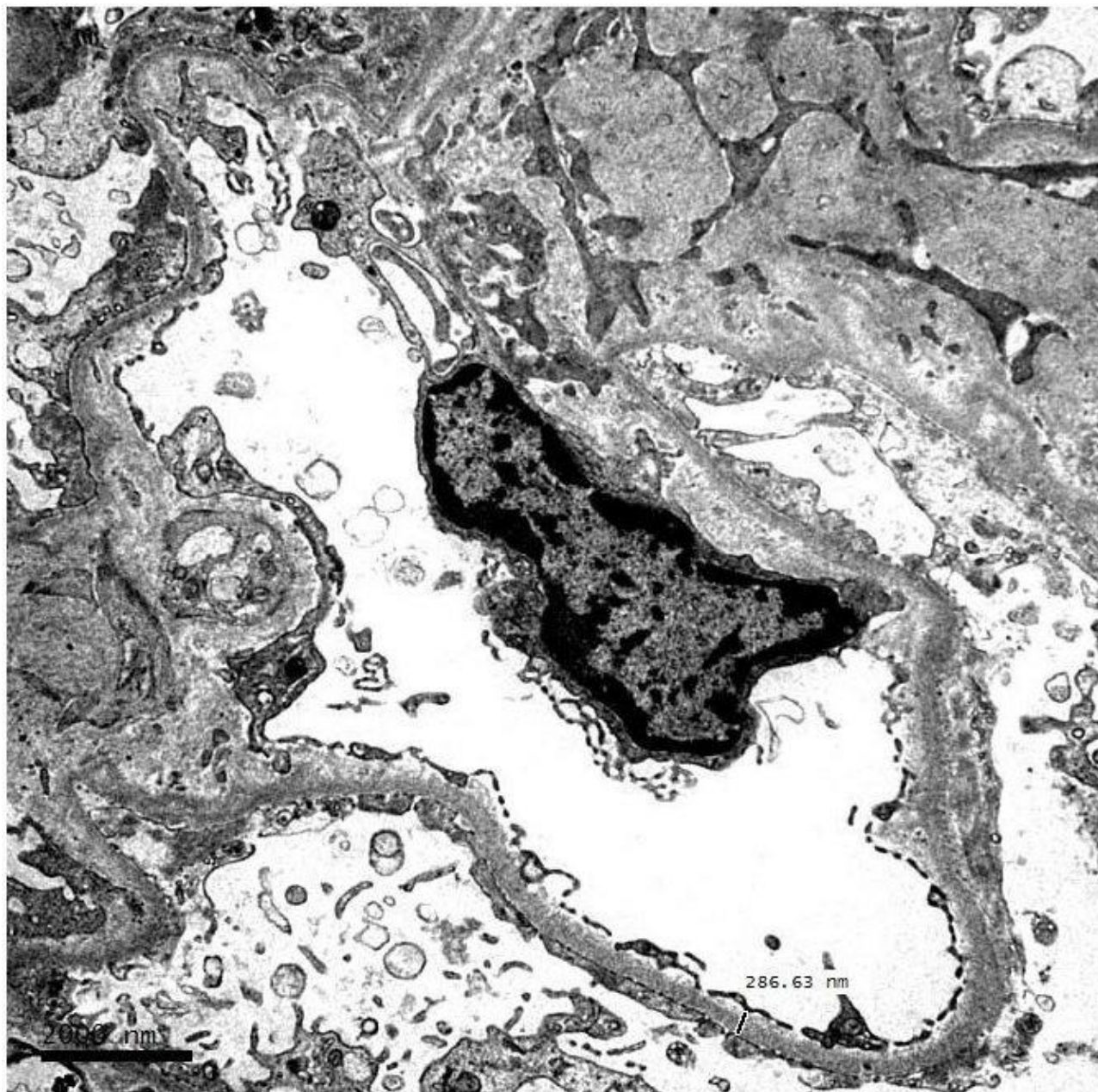


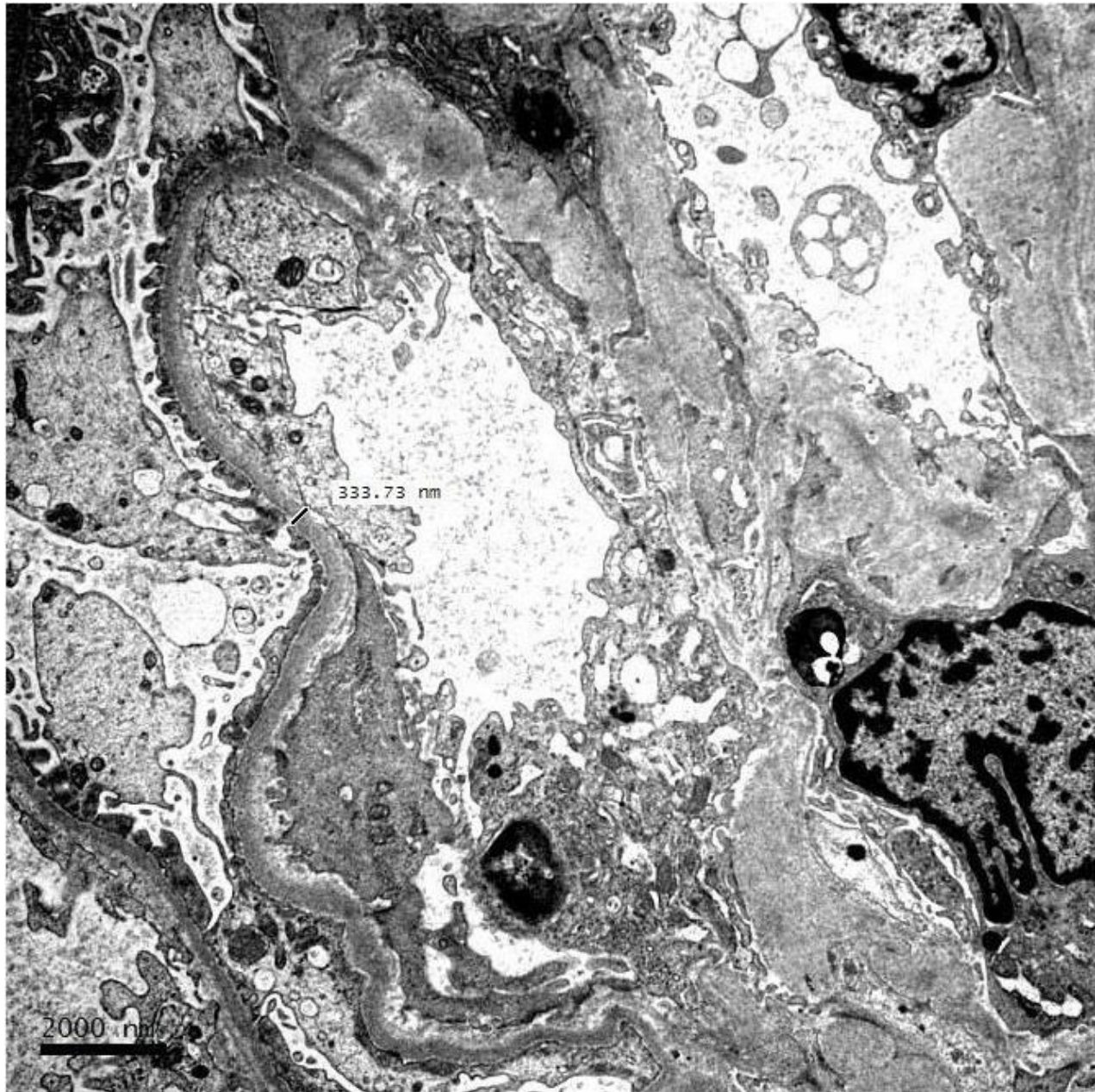
C3

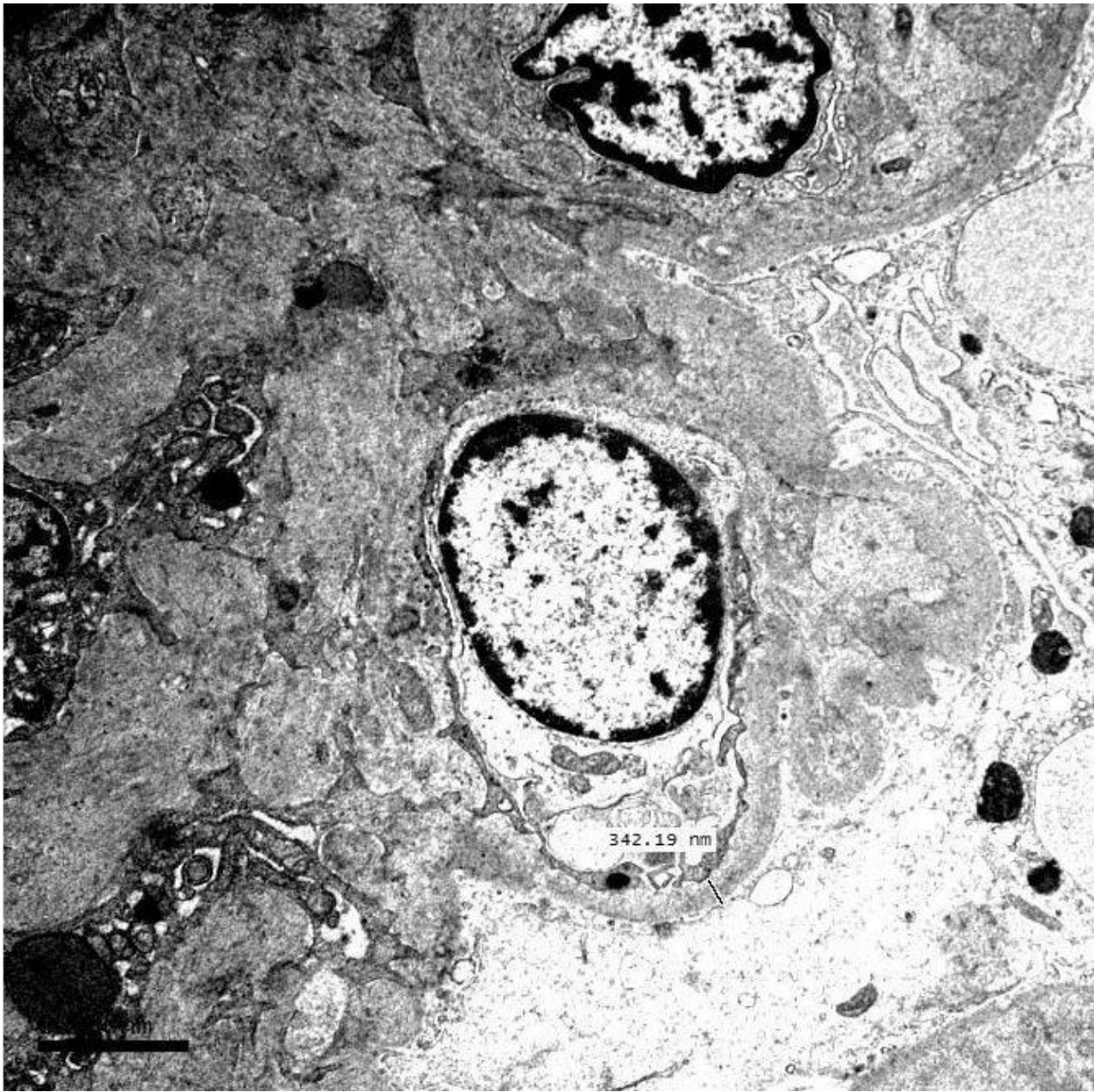


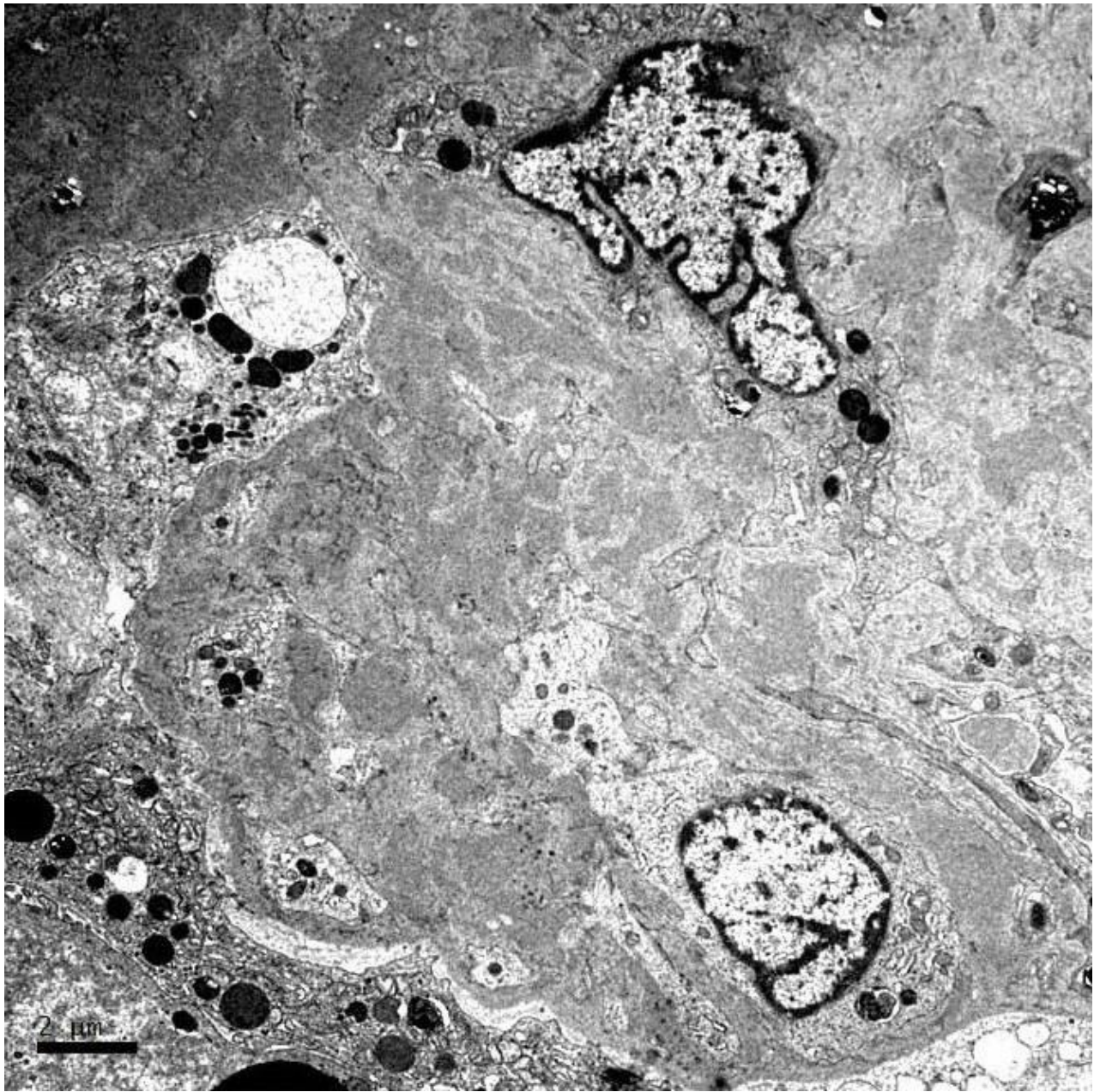














# RENAL BIOPSY CLINICOPATHOLOGICAL WORKSHOP 2018



**PATHOLOGY**



Division of Pathology  
Singapore General Hospital



Department of Renal Medicine  
Singapore General Hospital



**MEDICINE**