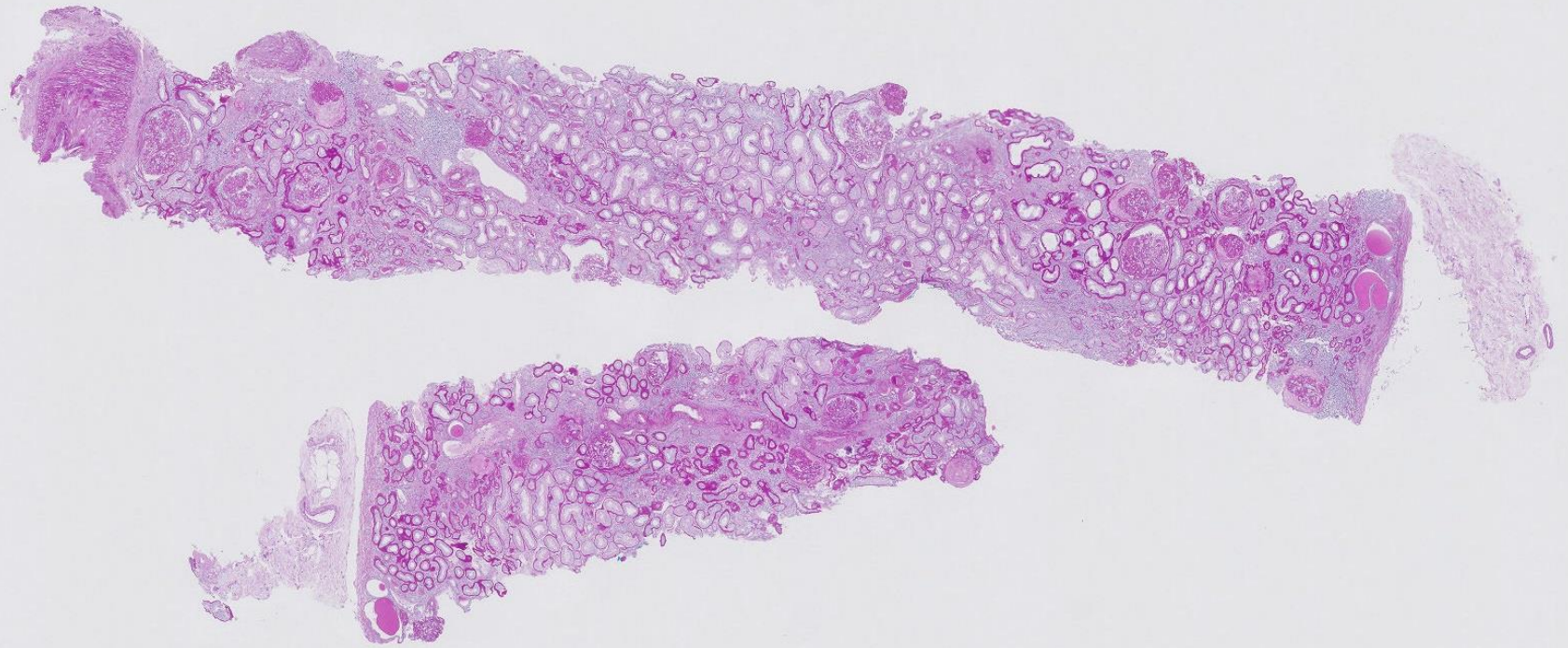
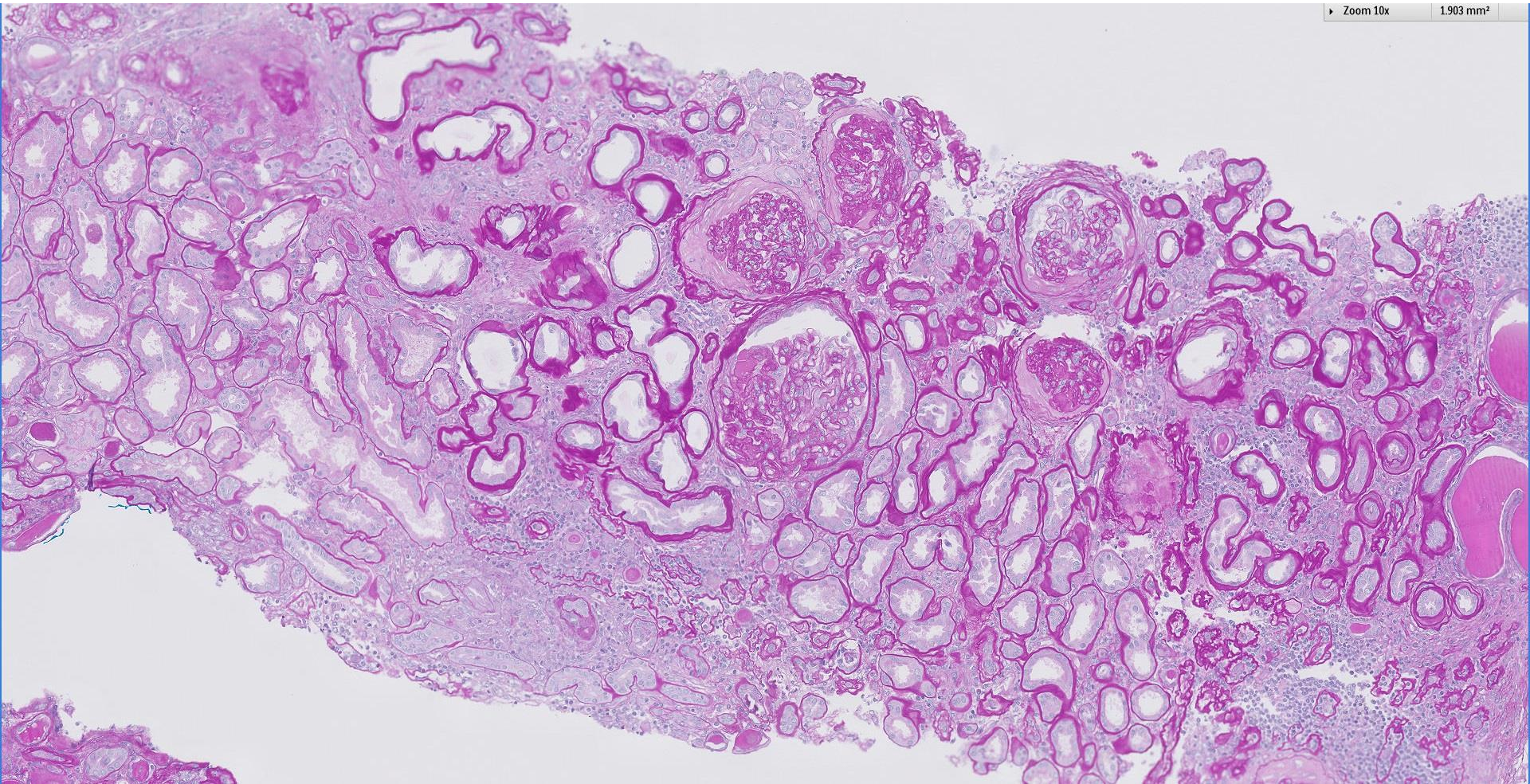


Case 8

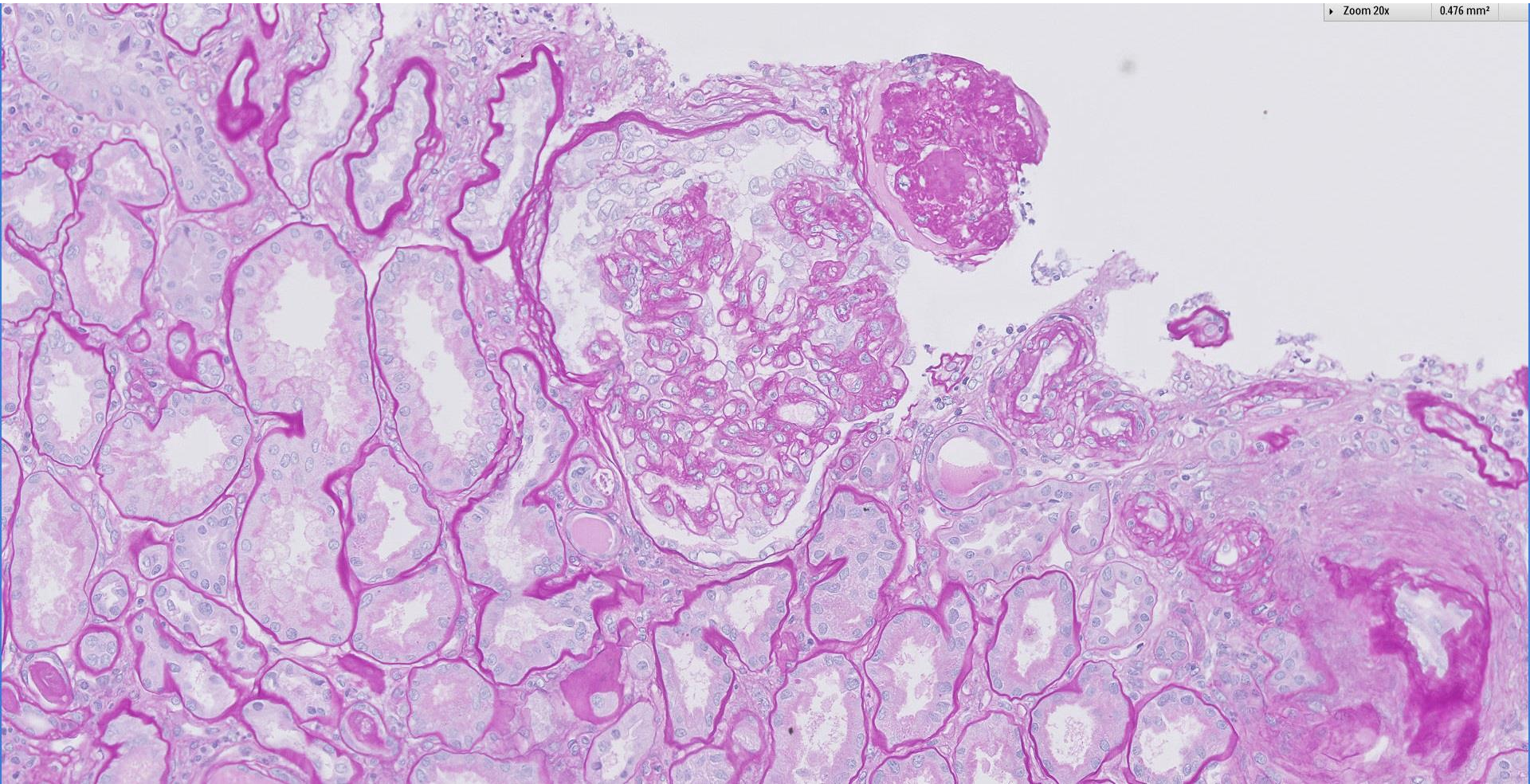
63 year old diabetic female with worsening renal function and UPCR 12 g/g. Urine red blood cells 5 per hpf.





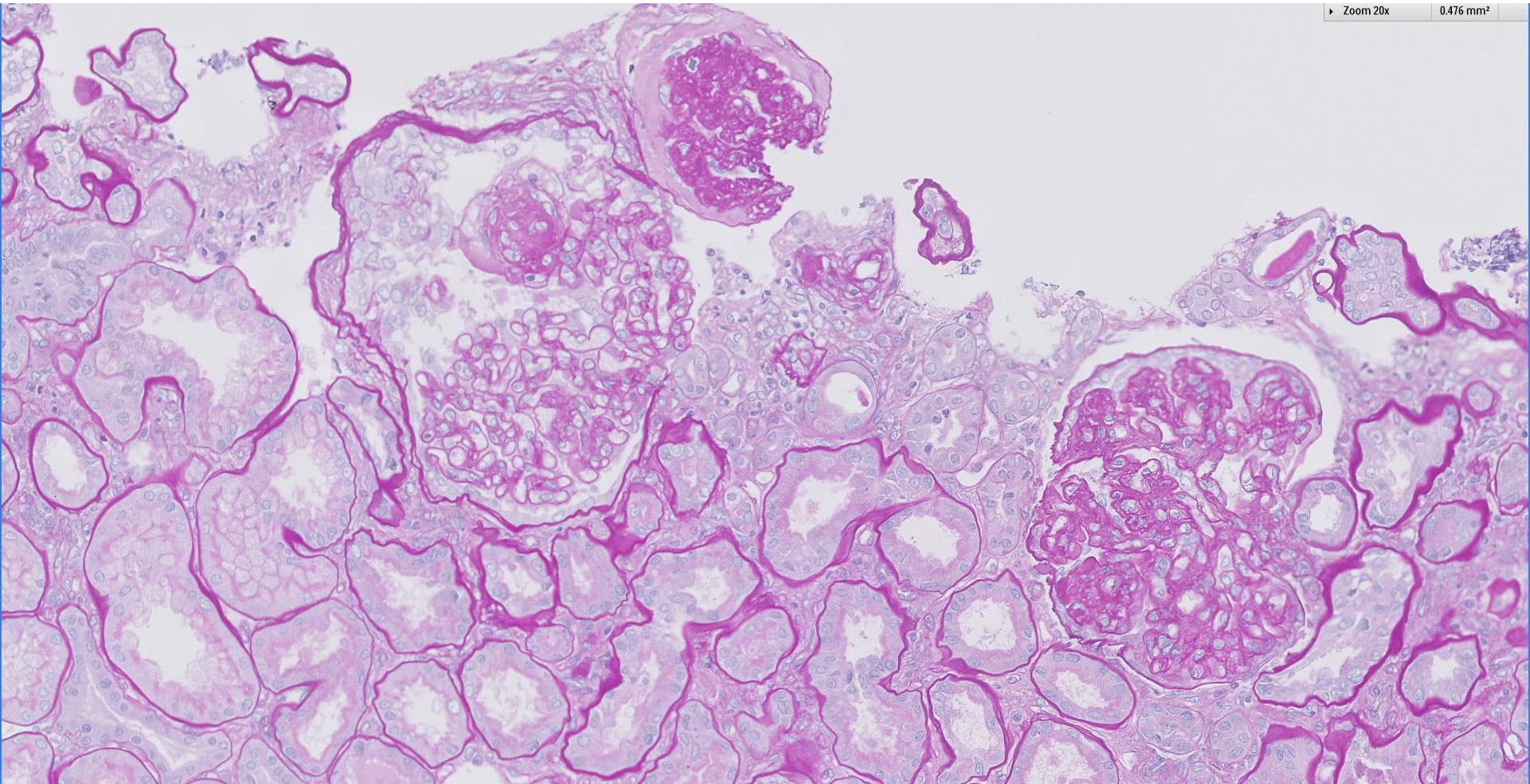
Zoom 20x

0.476 mm²

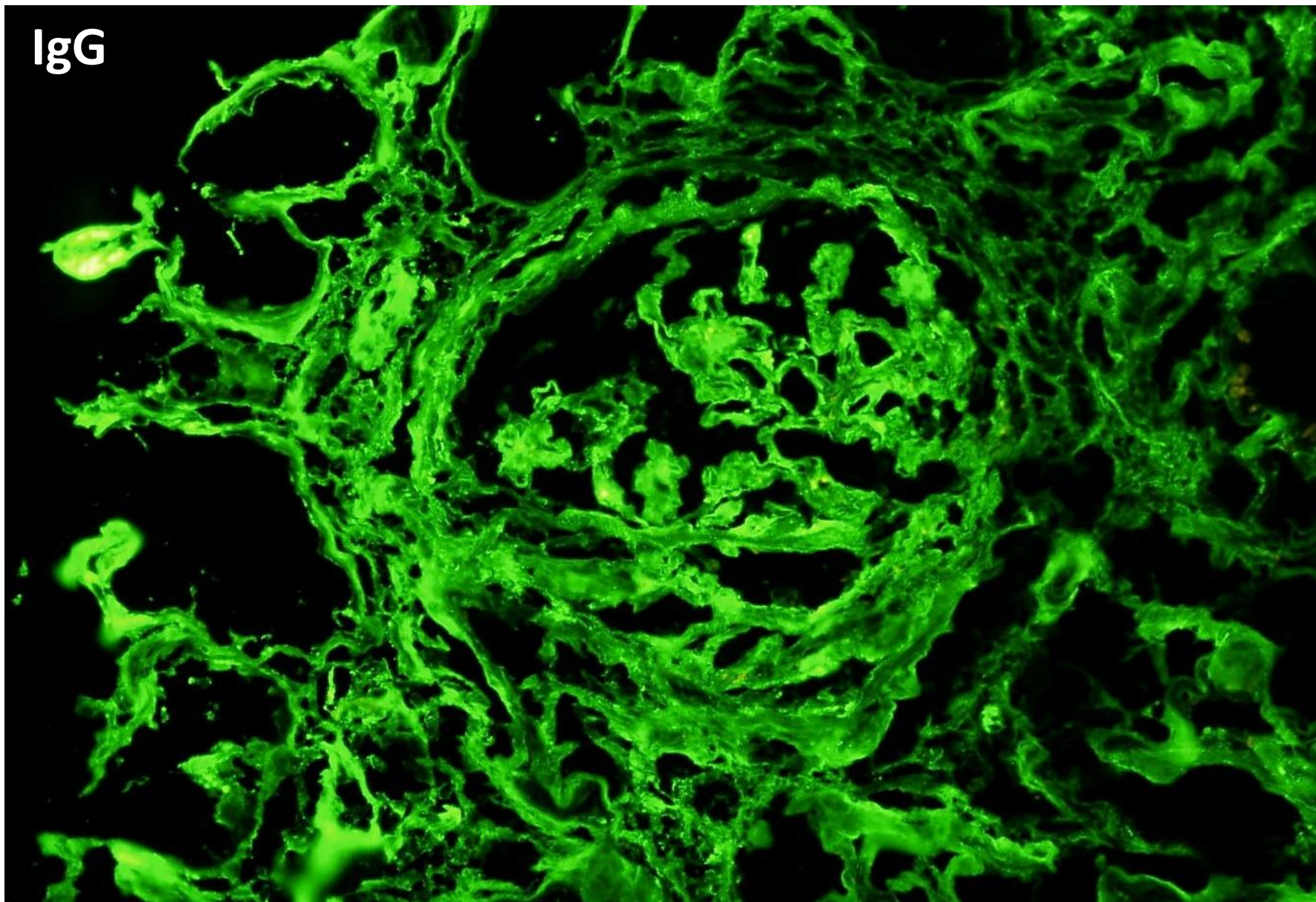


Zoom 20x

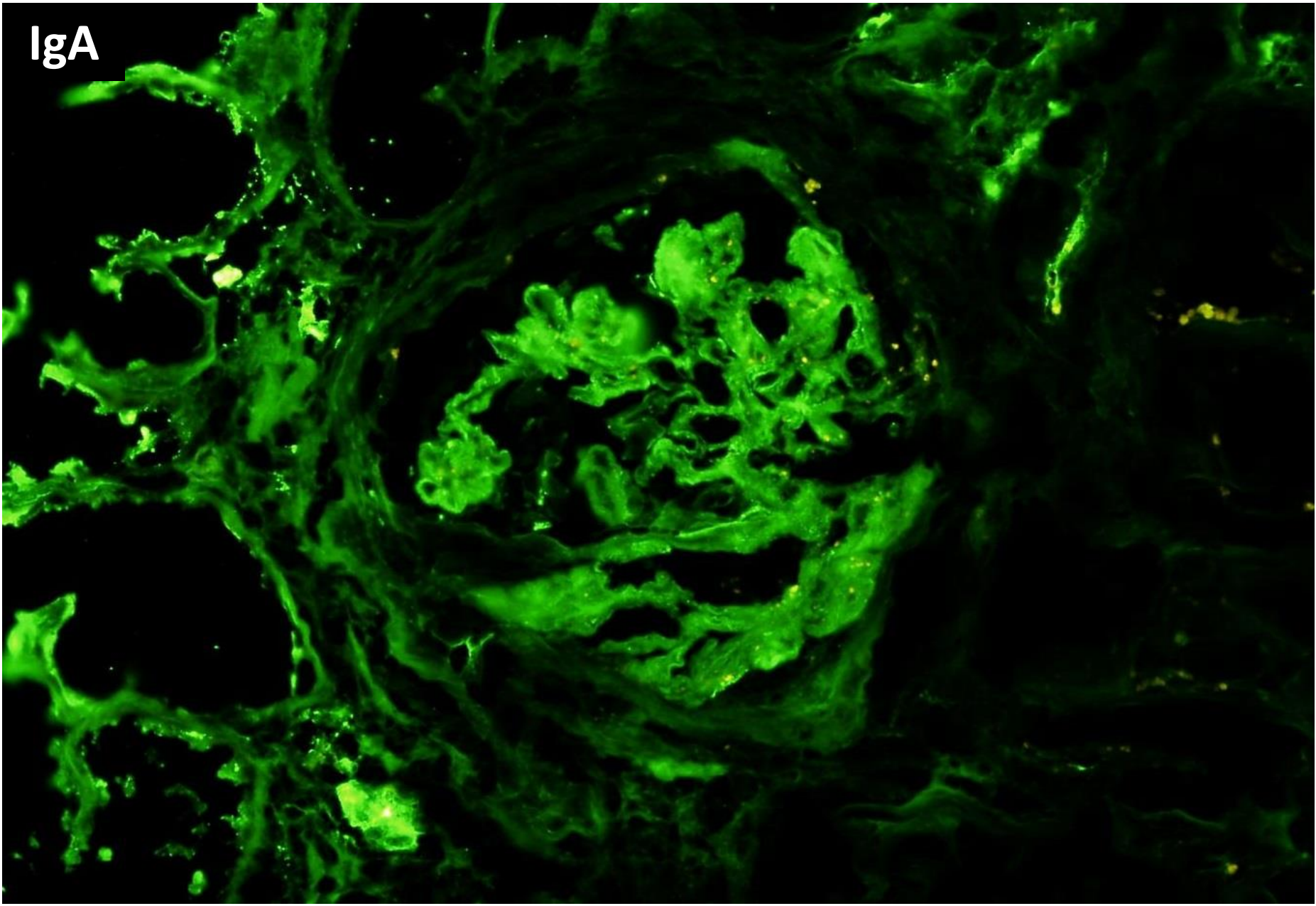
0.476 mm²



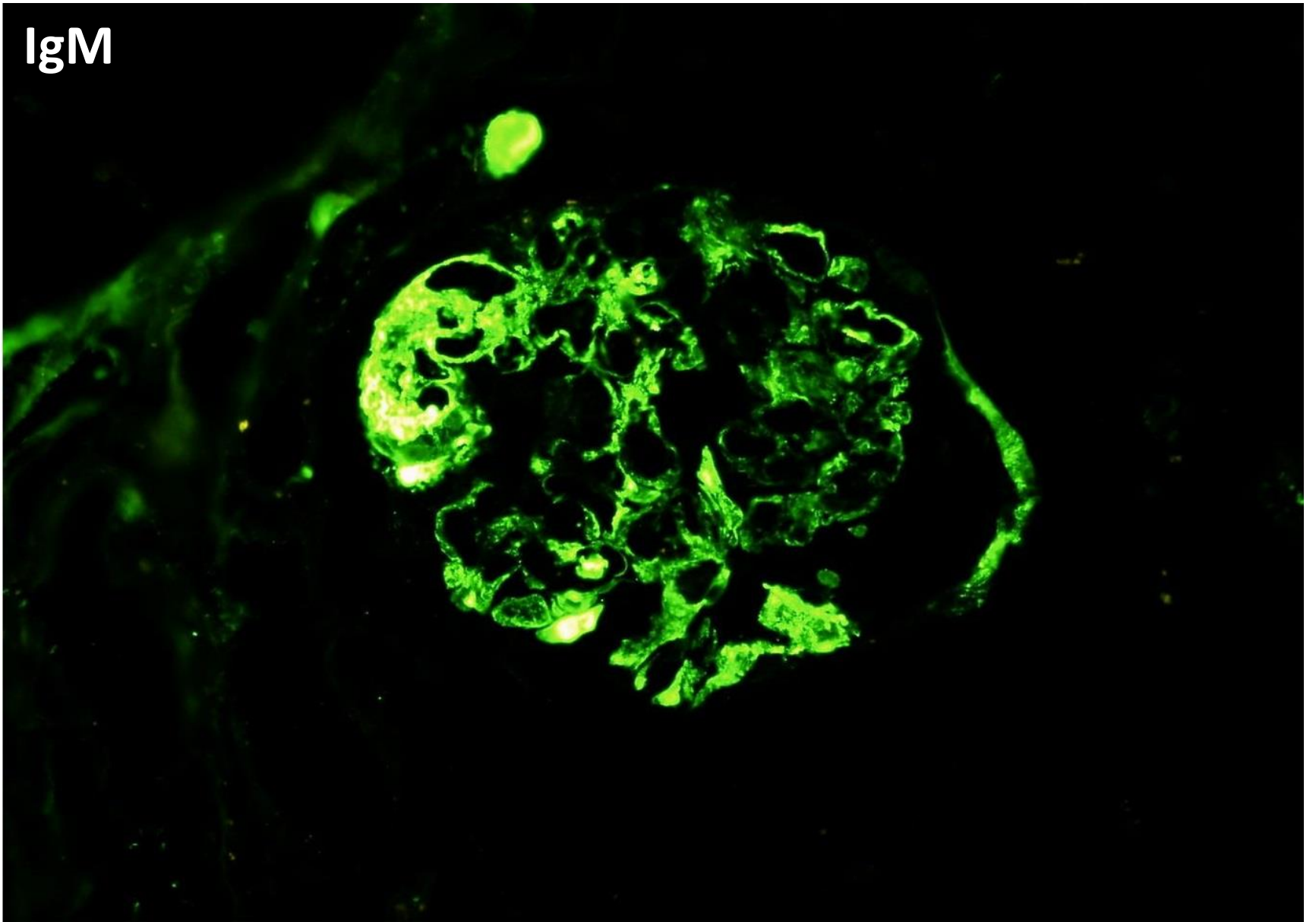
IgG



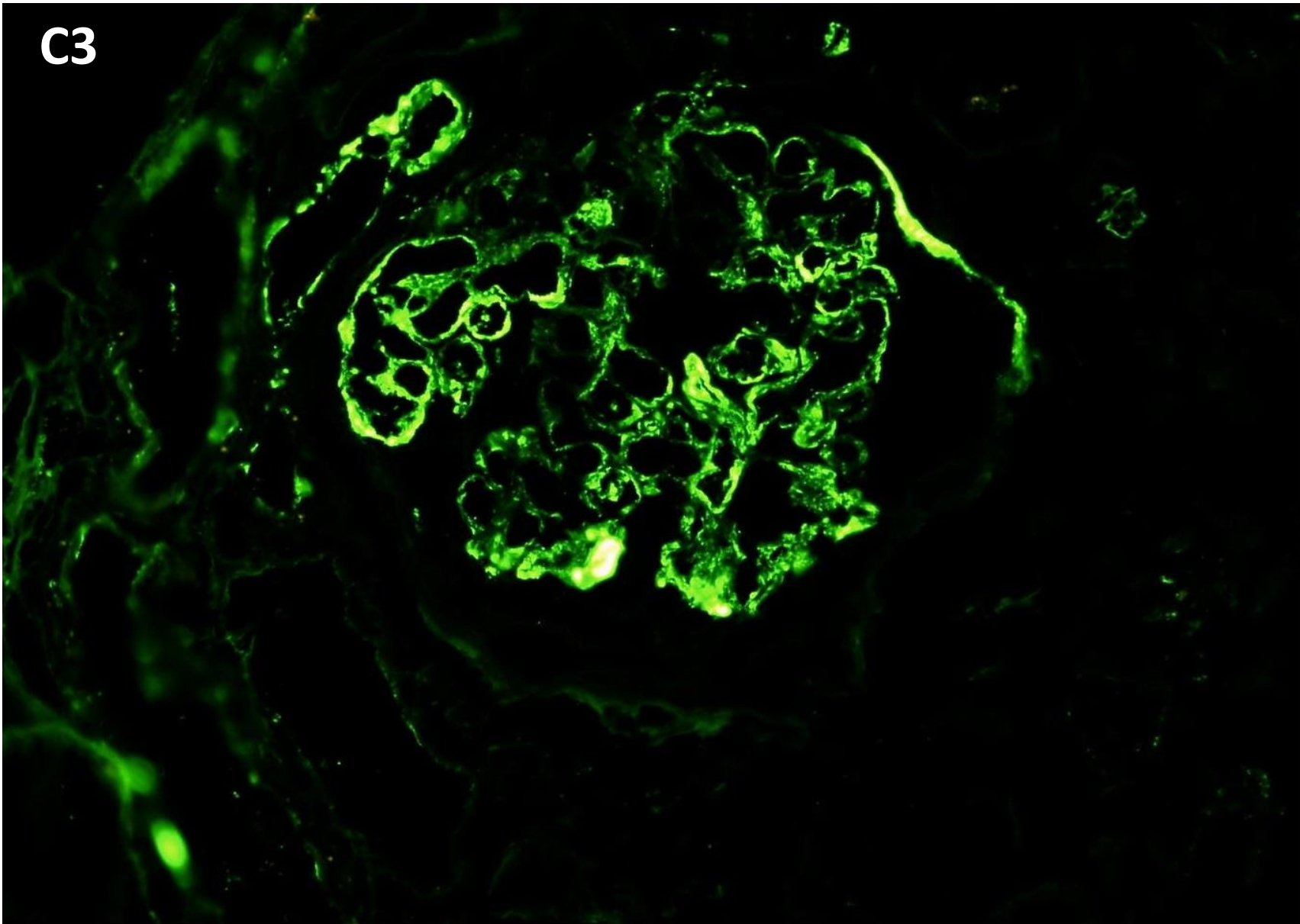
IgA



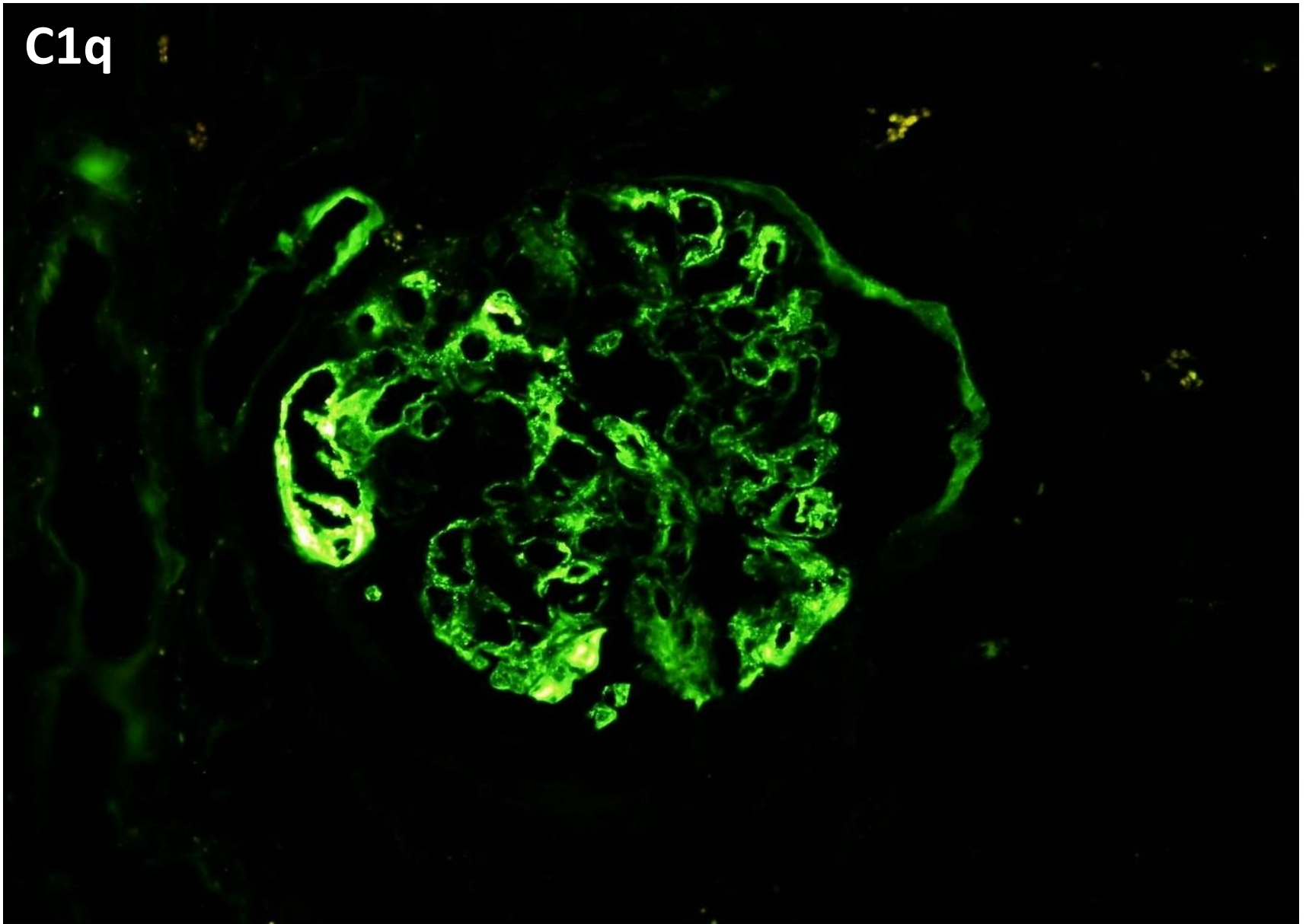
IgM



C3



C1q





RENAL BIOPSY
CLINICOPATHOLOGICAL
WORKSHOP 2018

No electron microscopy done.



RENAL BIOPSY CLINICOPATHOLOGICAL WORKSHOP 2018



PATHOLOGY



Division of Pathology
Singapore General Hospital



Department of Renal Medicine
Singapore General Hospital



MEDICINE