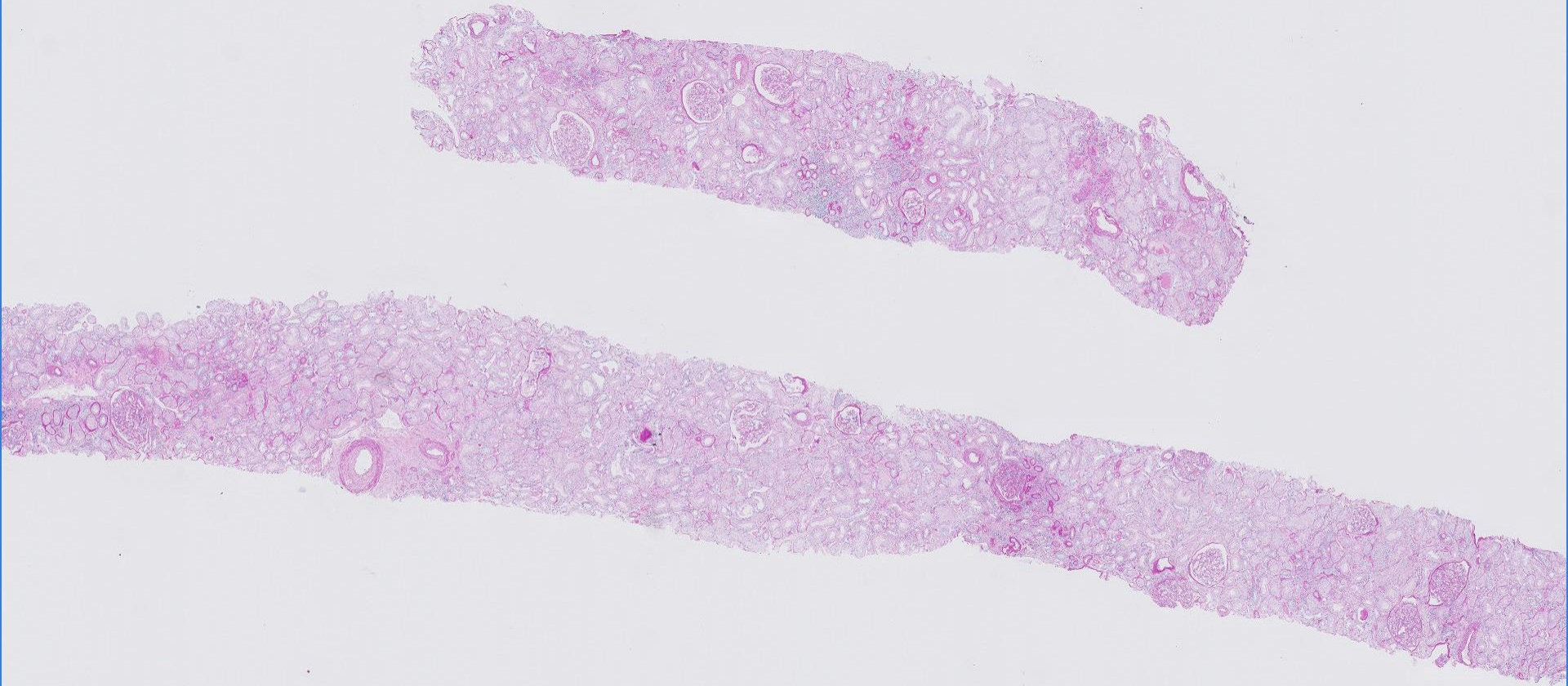
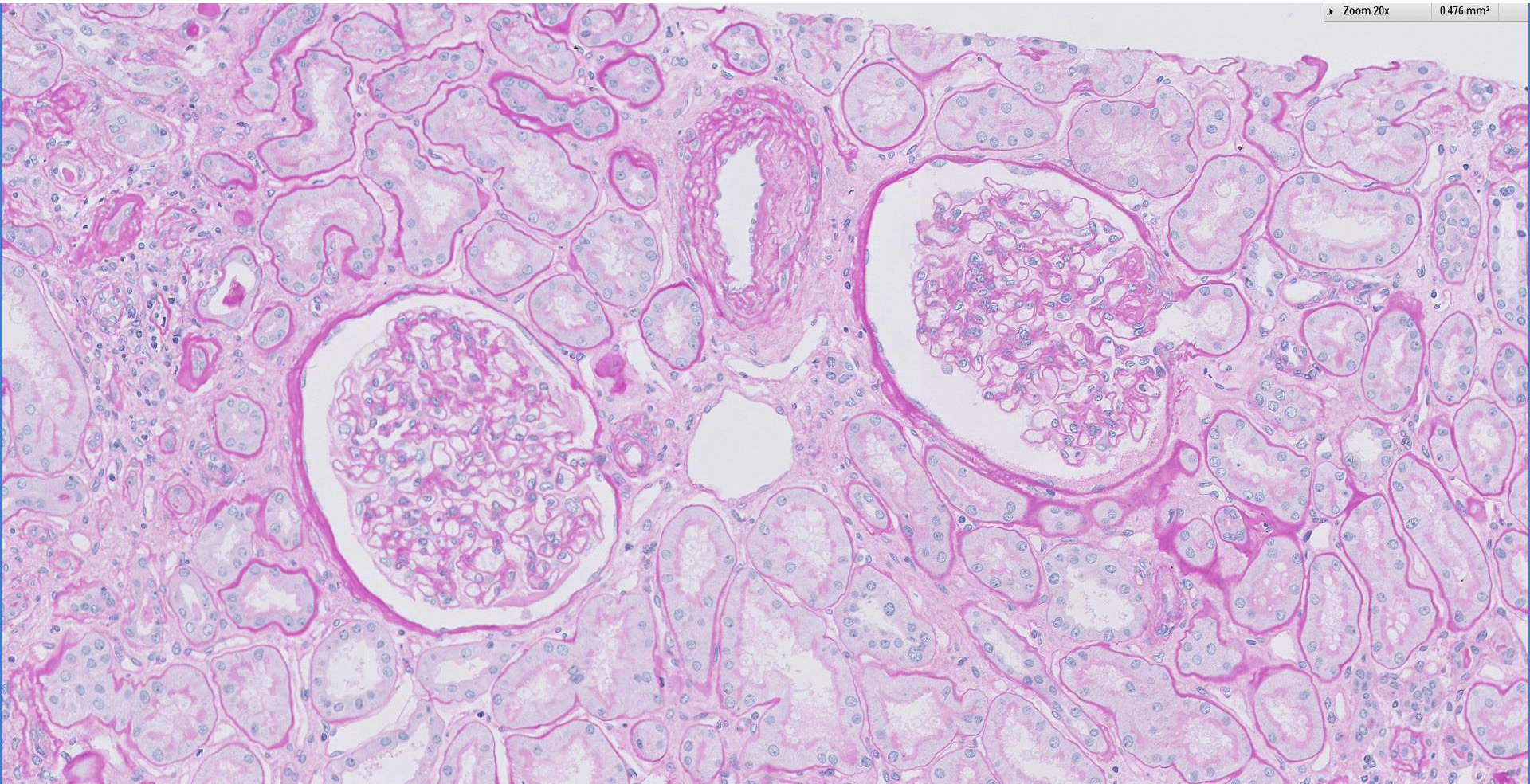
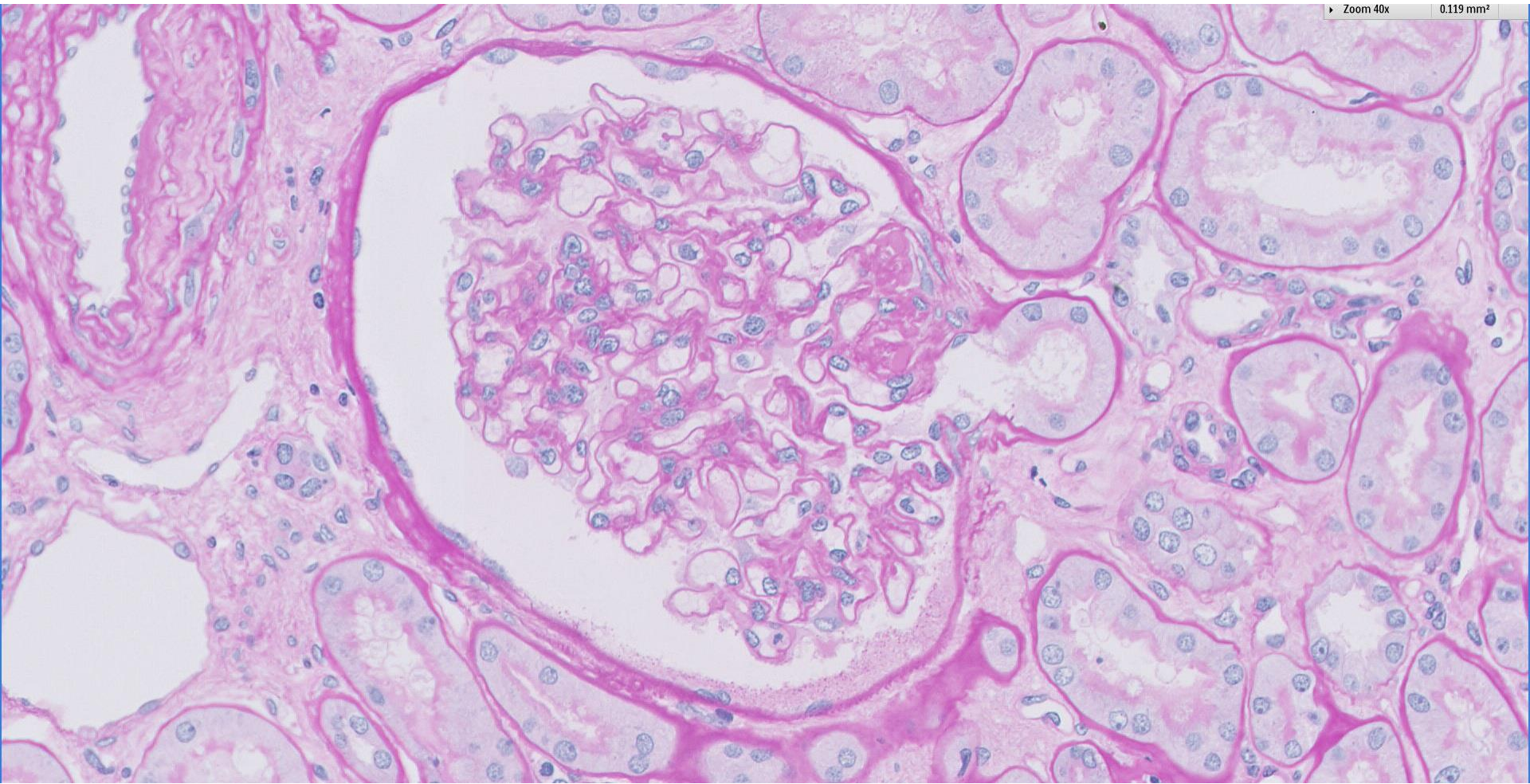


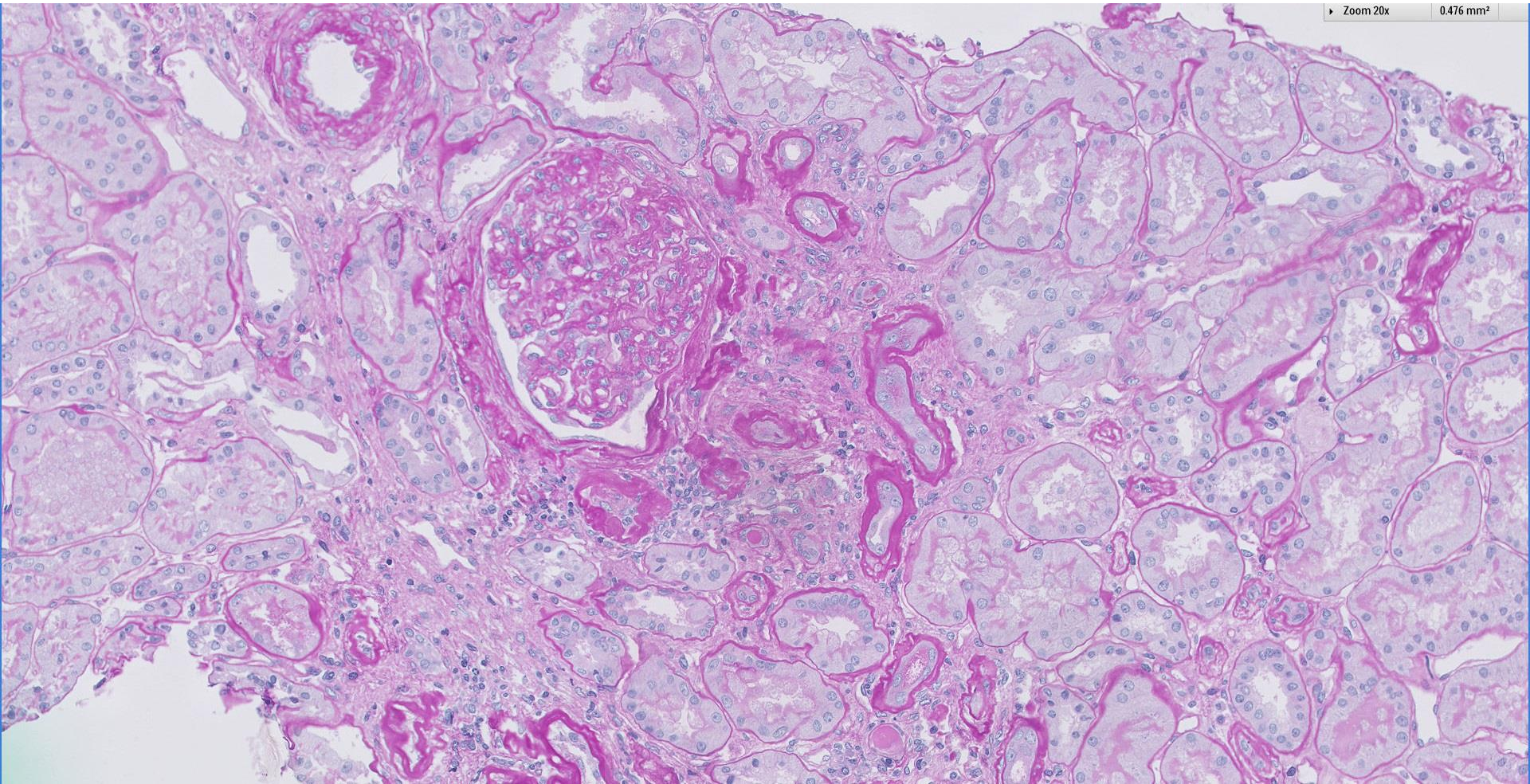
Case 7

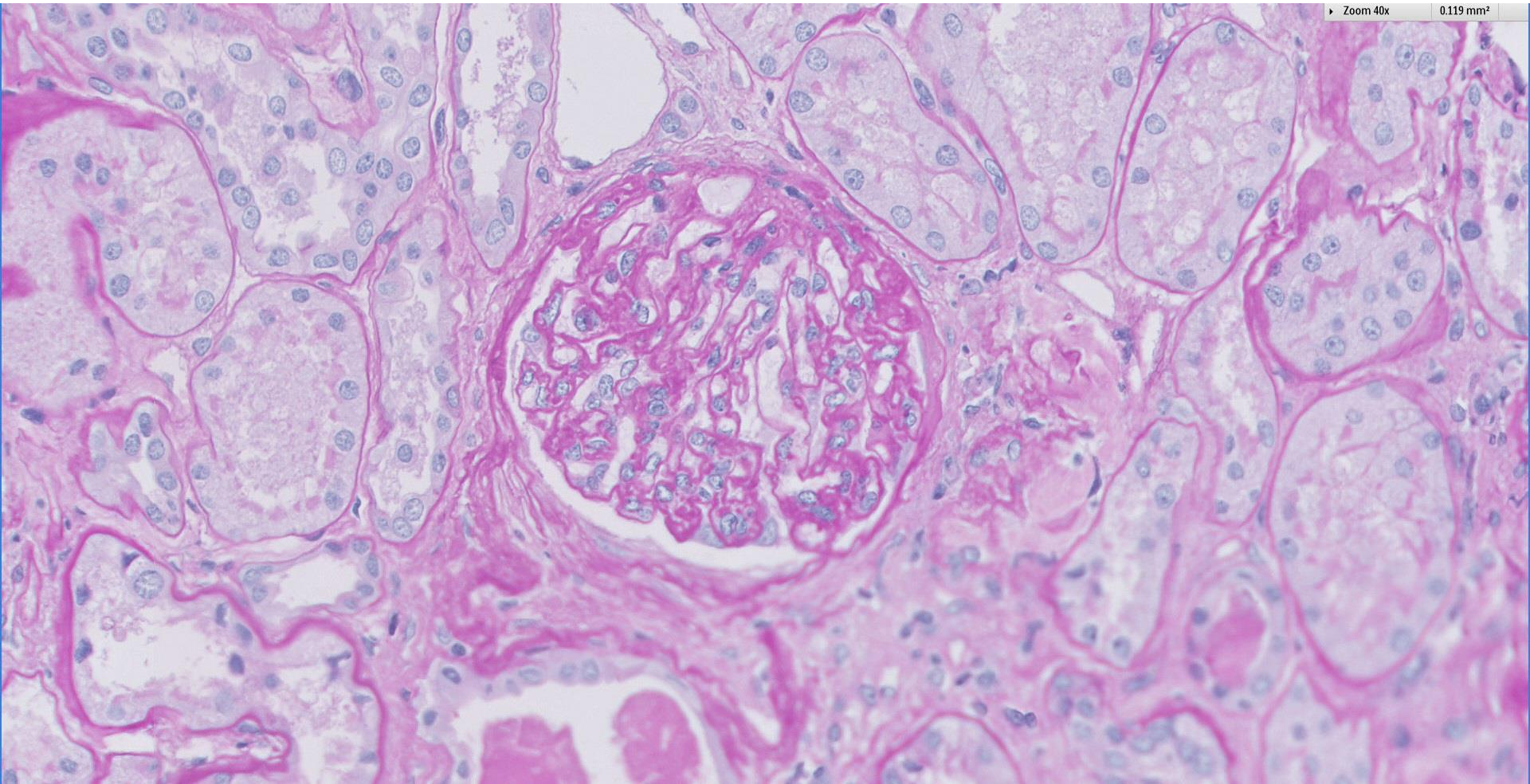
55 year old diabetic male with diabetic retinopathy now presents with proteinuria and haematuria.



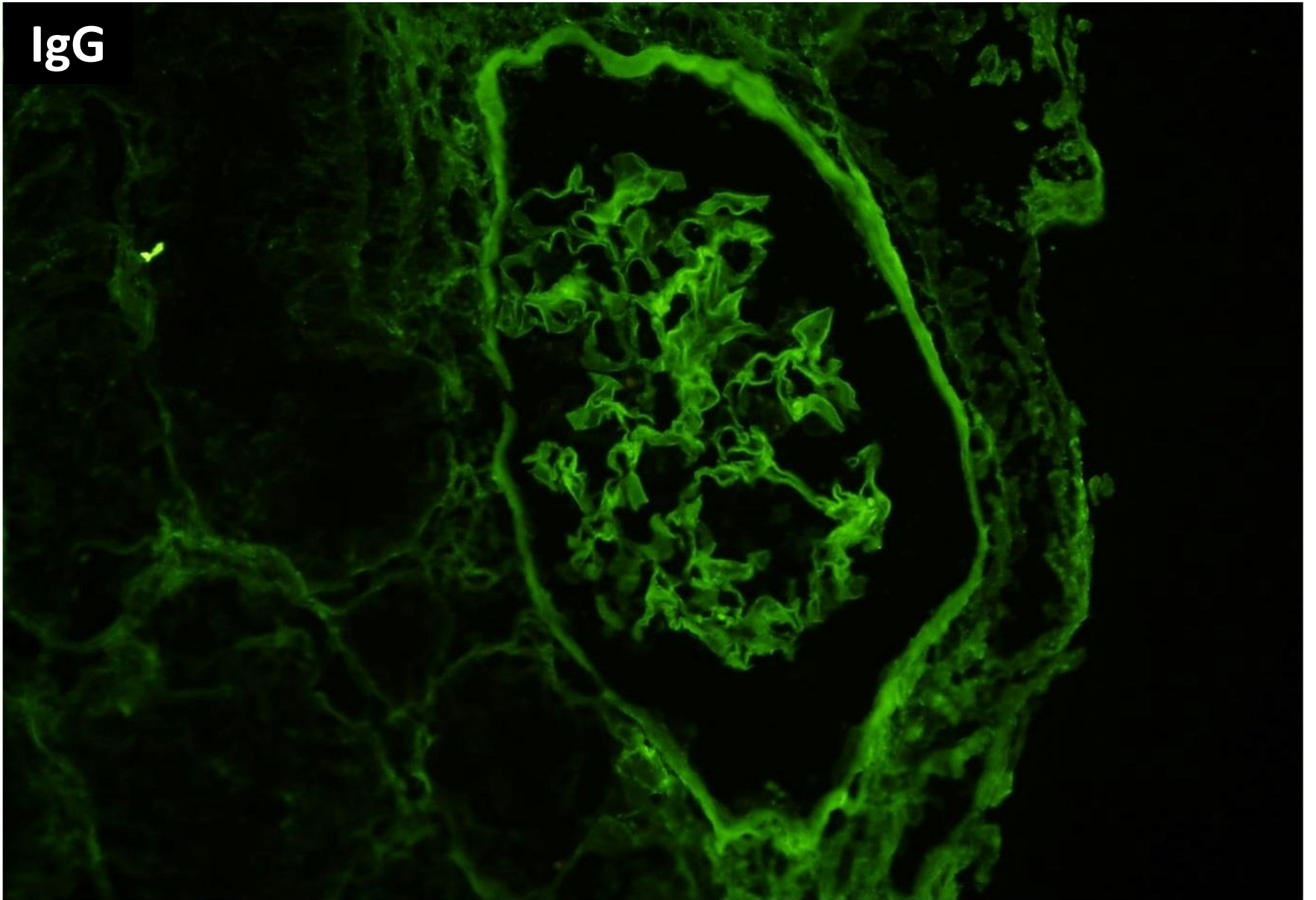




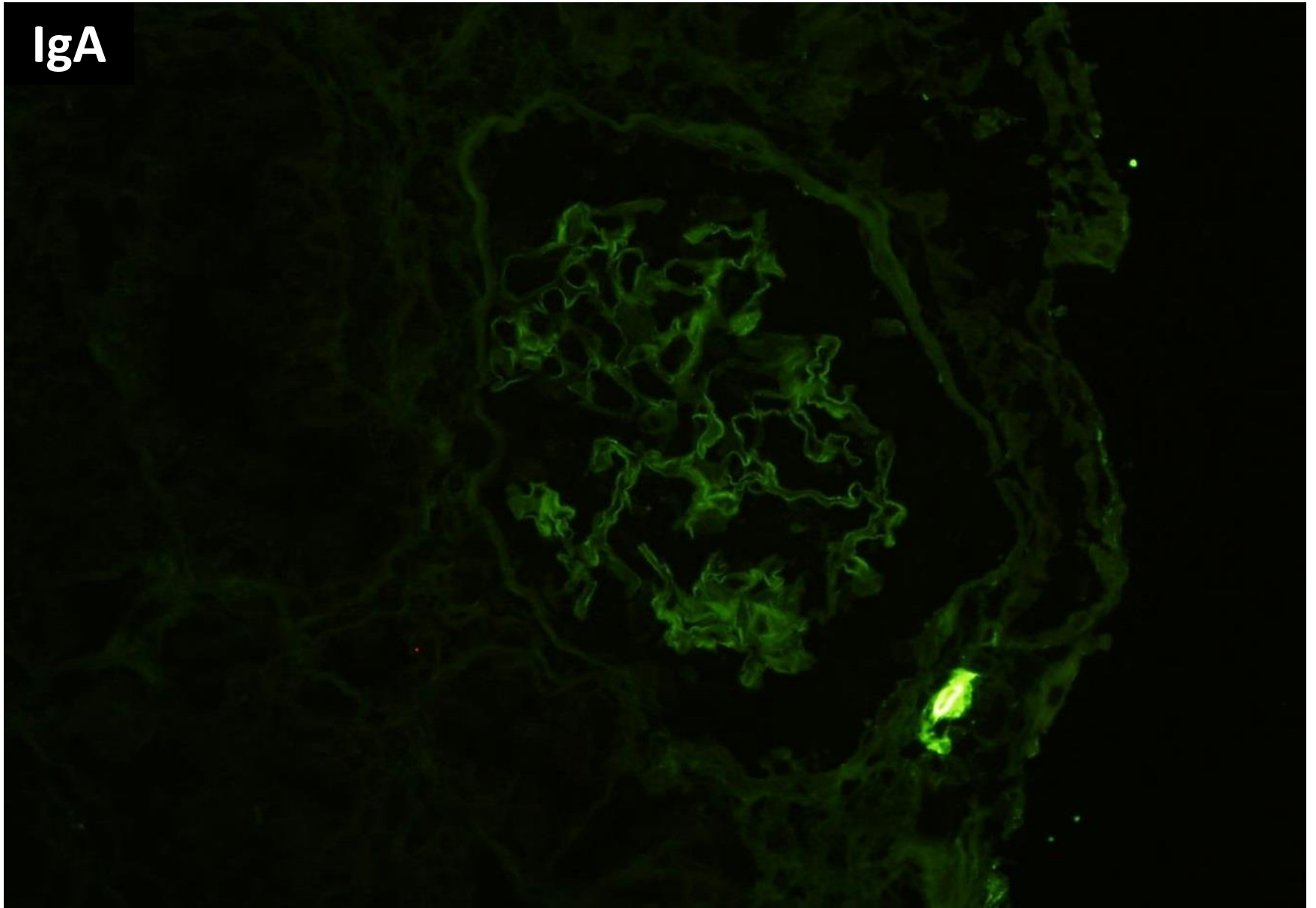




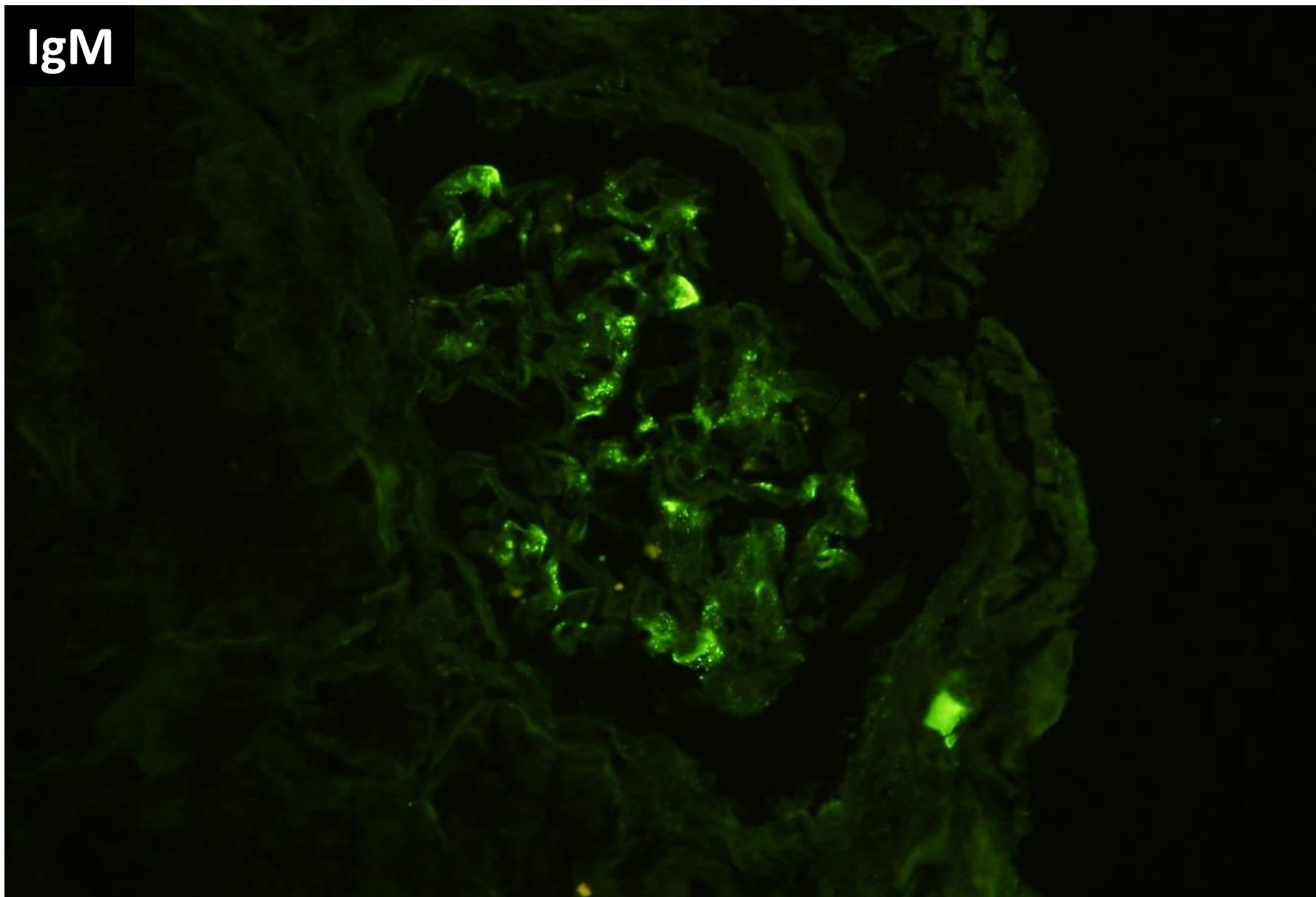
IgG



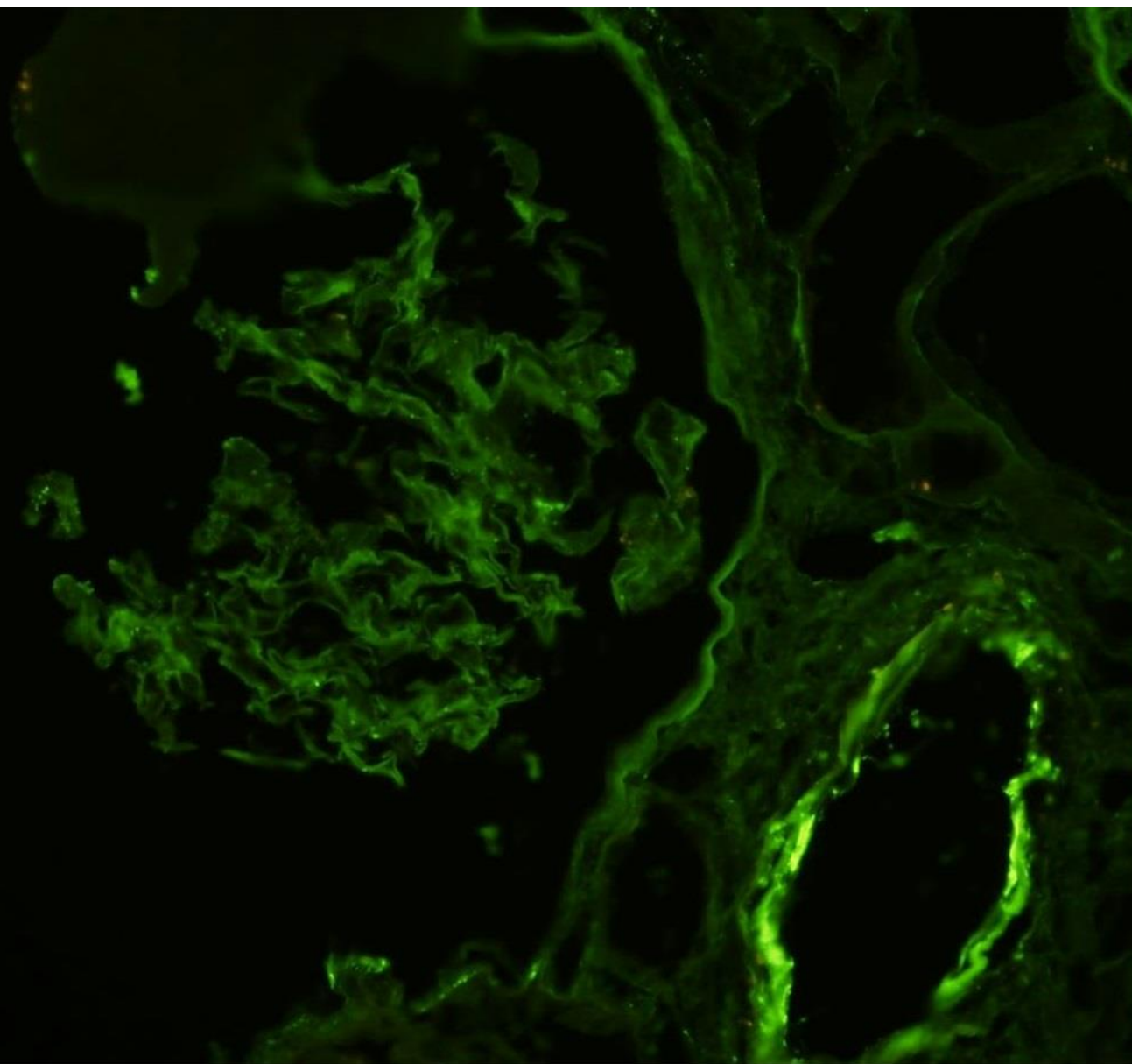
IgA

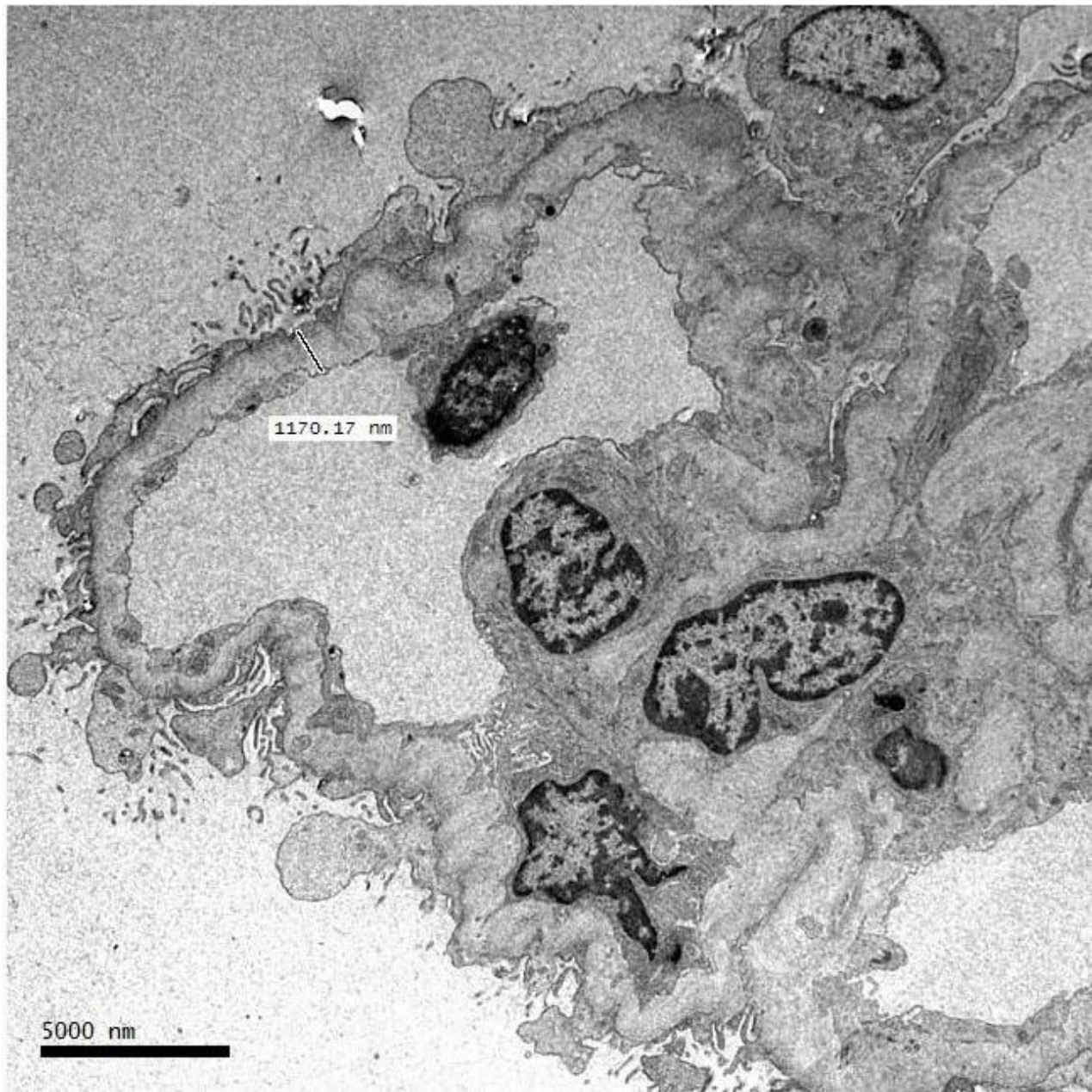


IgM

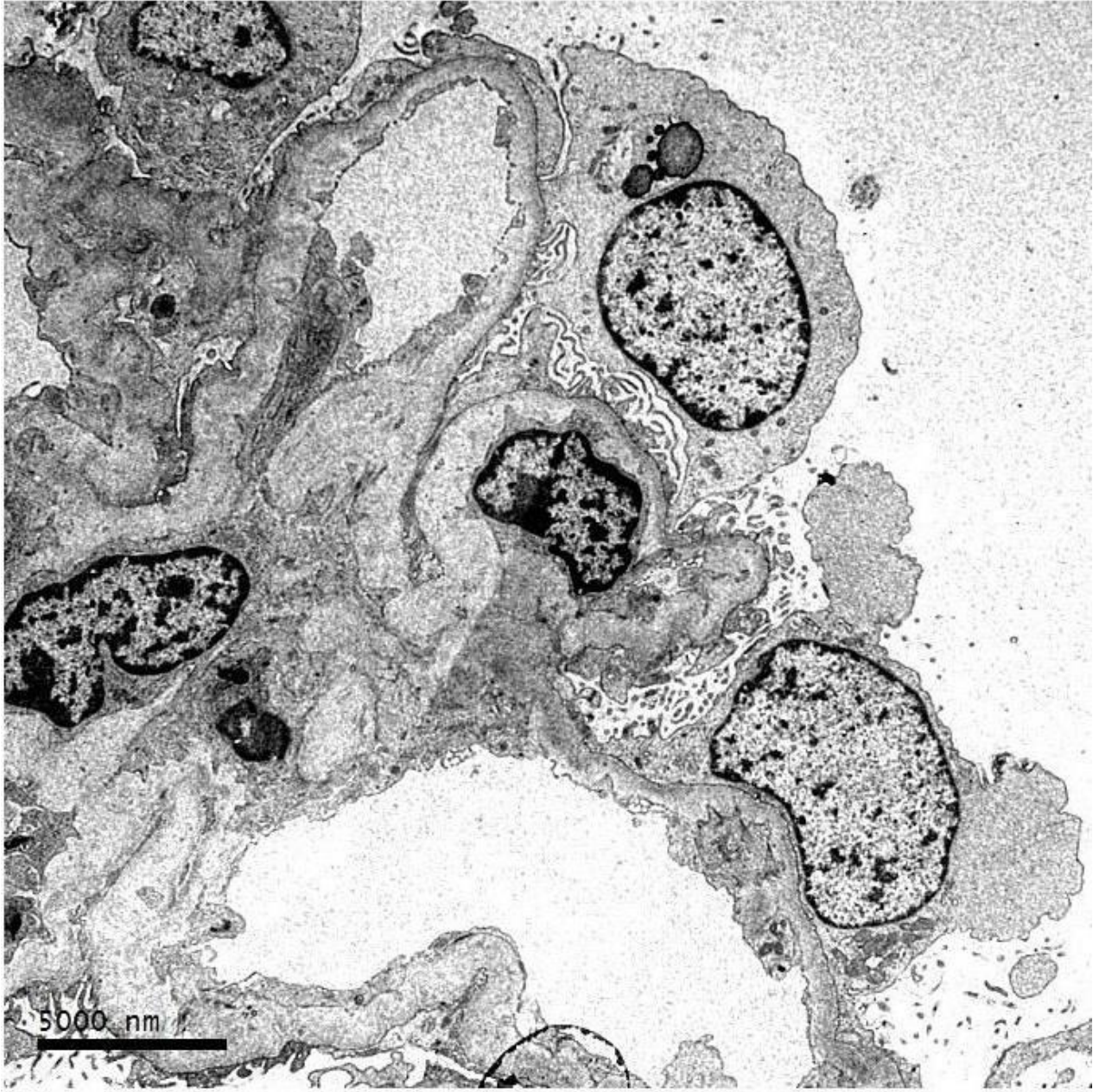


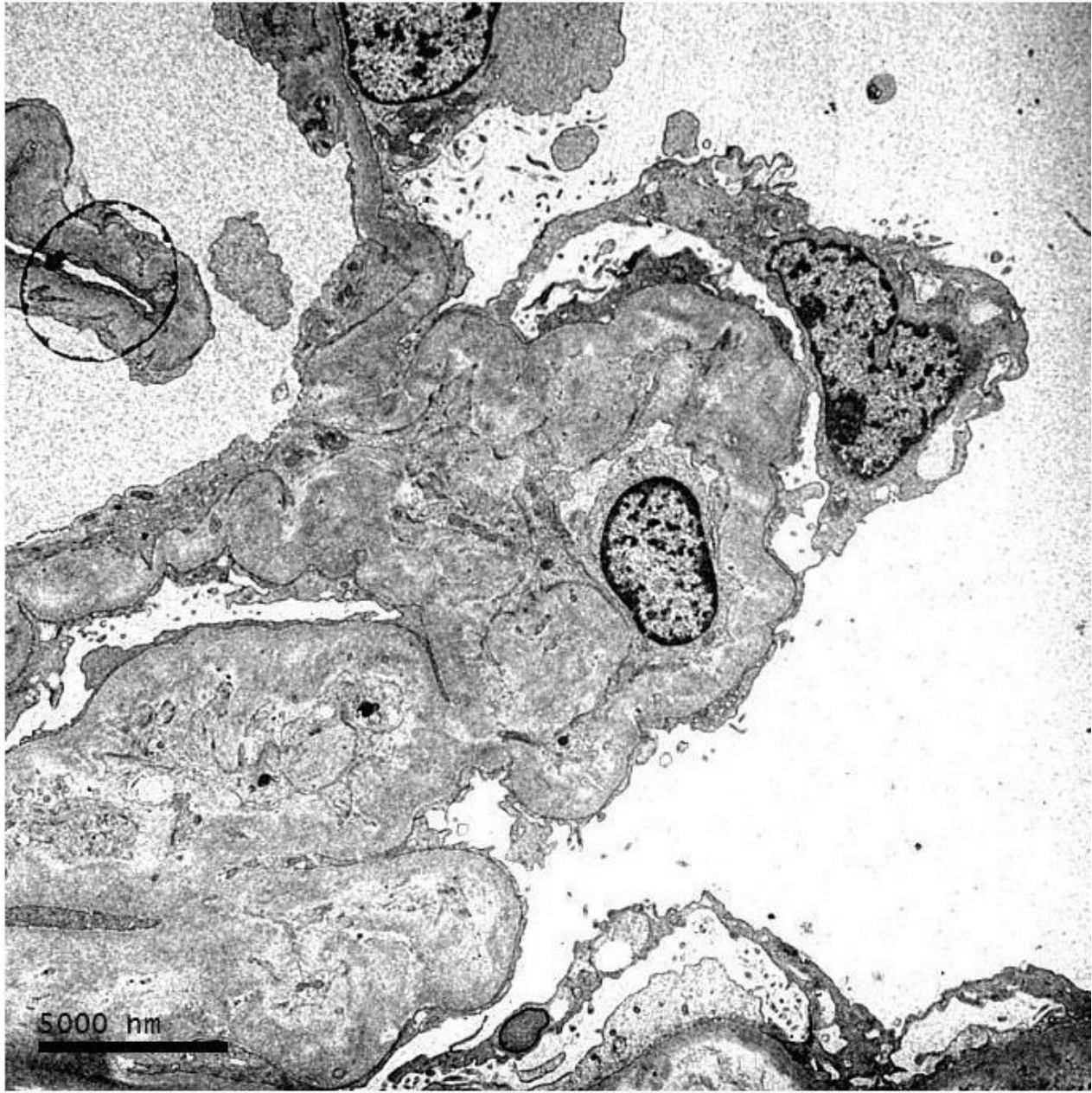
C3













RENAL BIOPSY CLINICOPATHOLOGICAL WORKSHOP 2018



PATHOLOGY



Division of Pathology
Singapore General Hospital



Department of Renal Medicine
Singapore General Hospital



MEDICINE