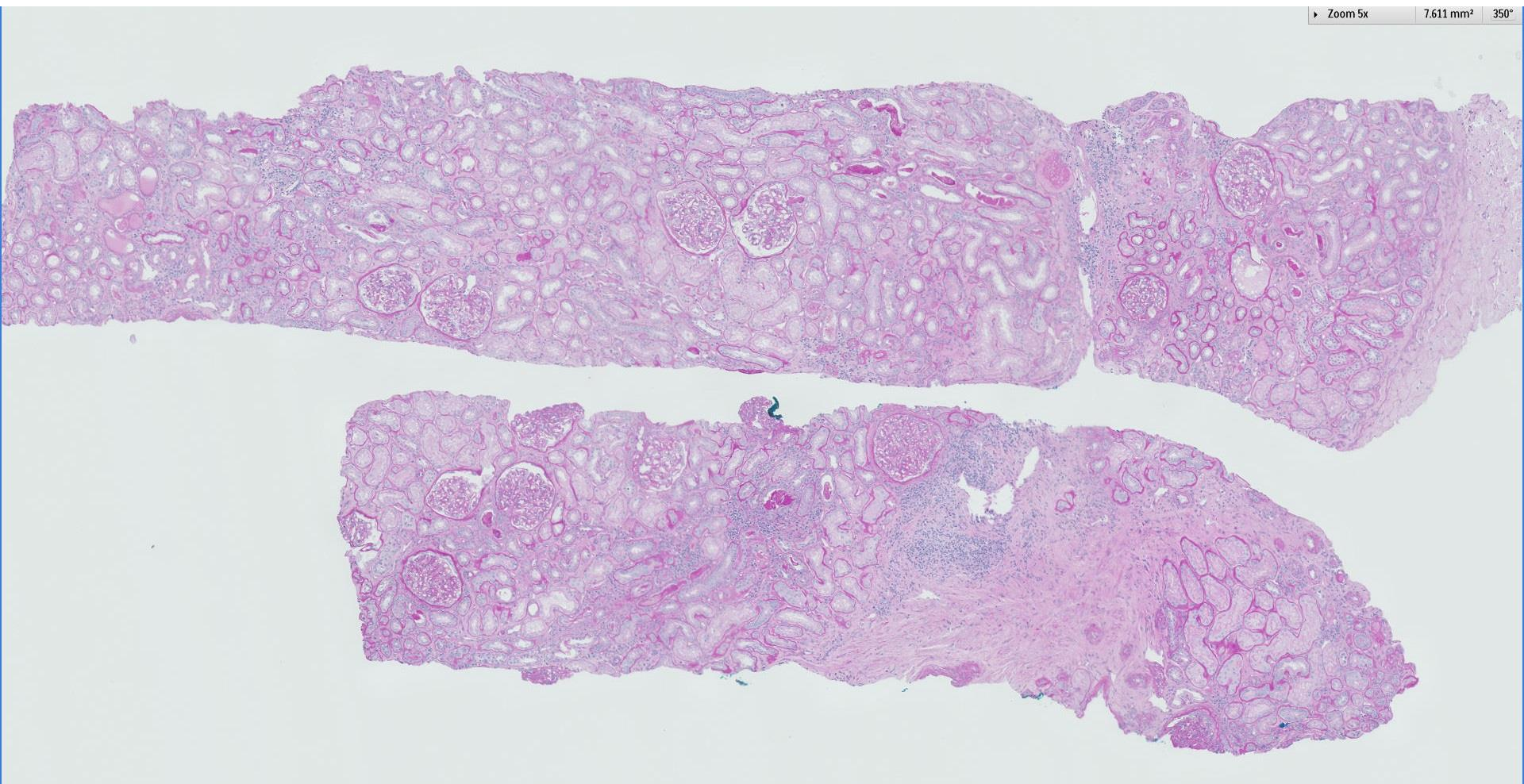
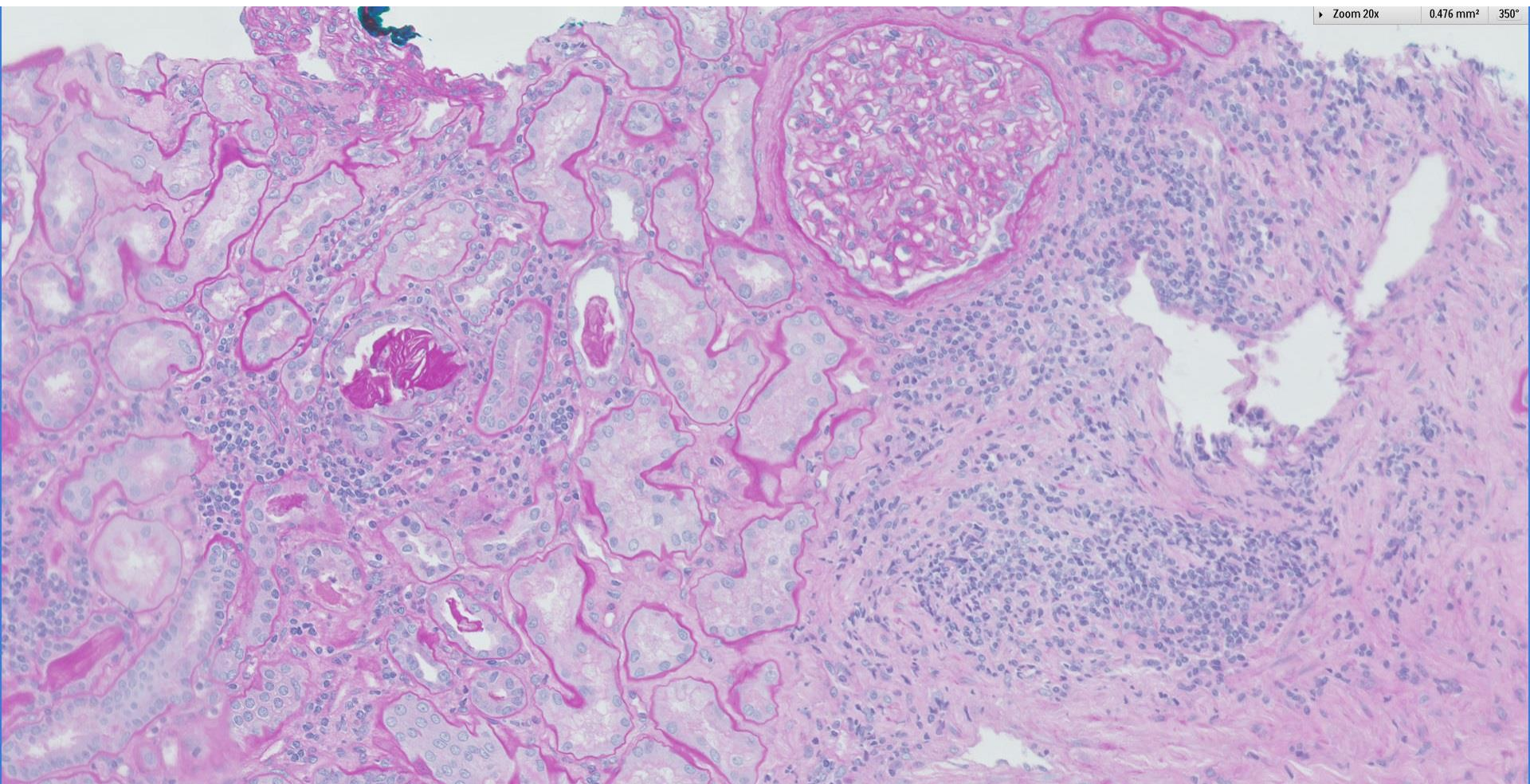
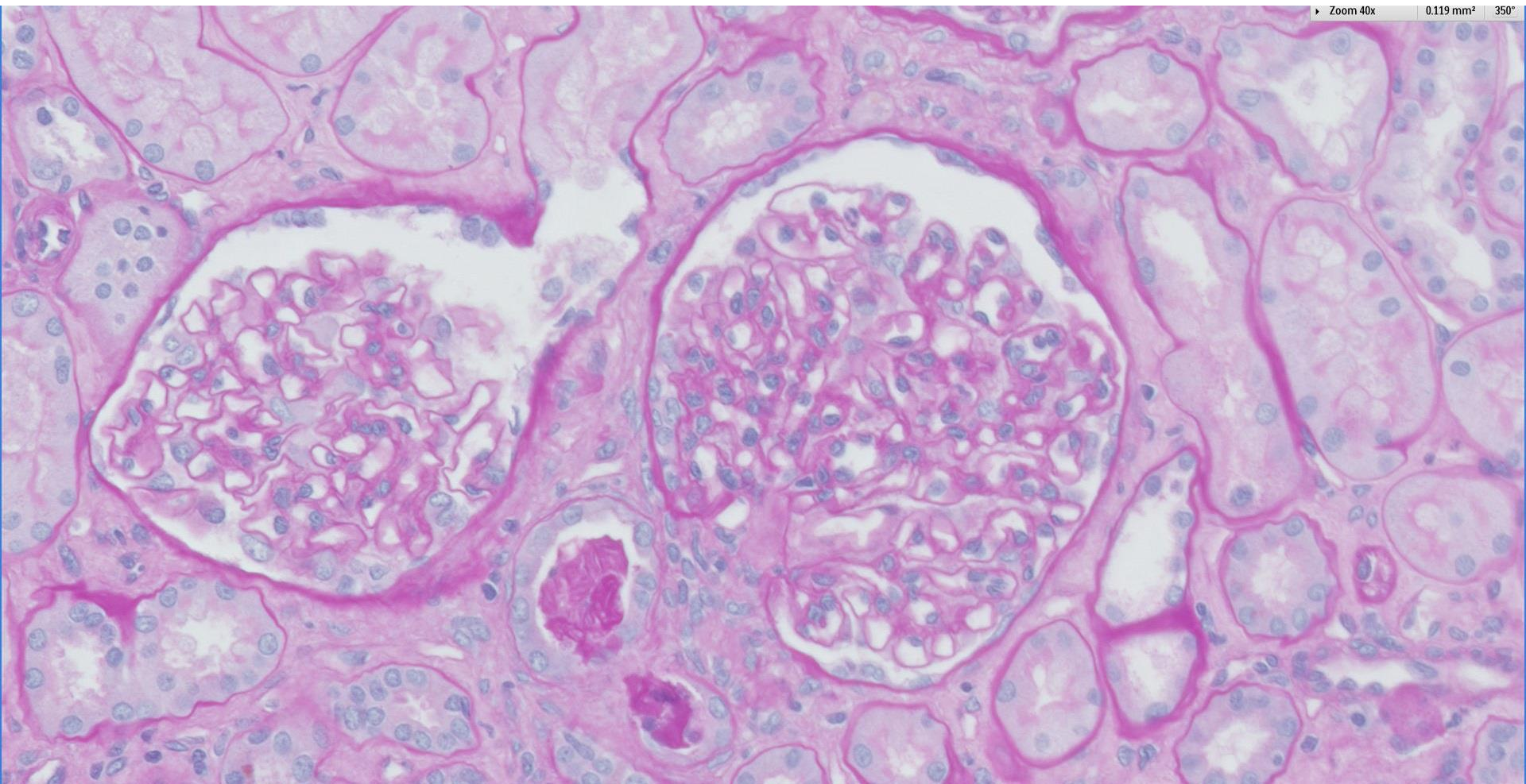


Case 5

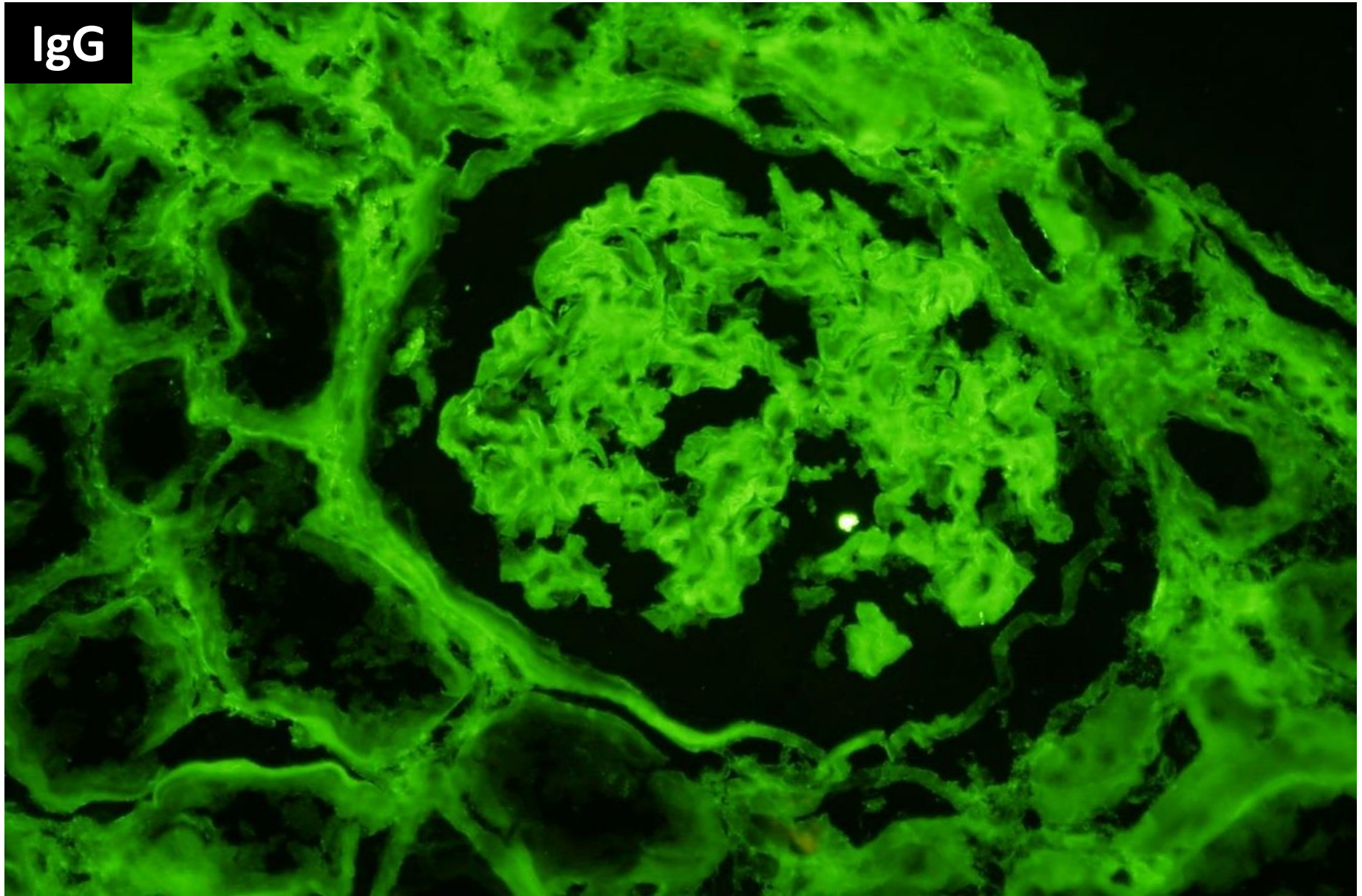
59 year old male with acute on chronic renal failure, previously on candesartan for hypertension. Urine red blood cells 15 per hpf, UPCR 6.2 g/g.



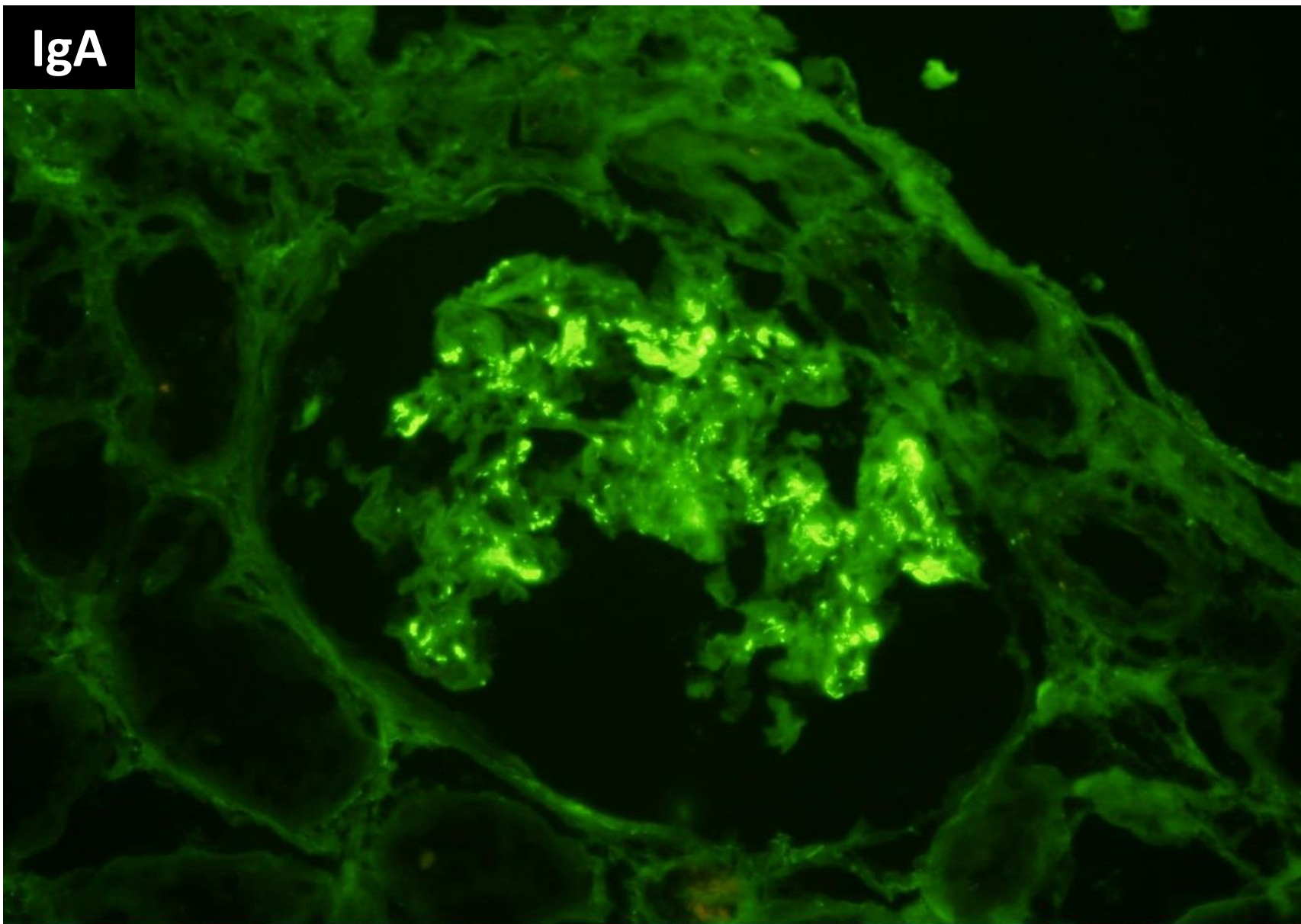




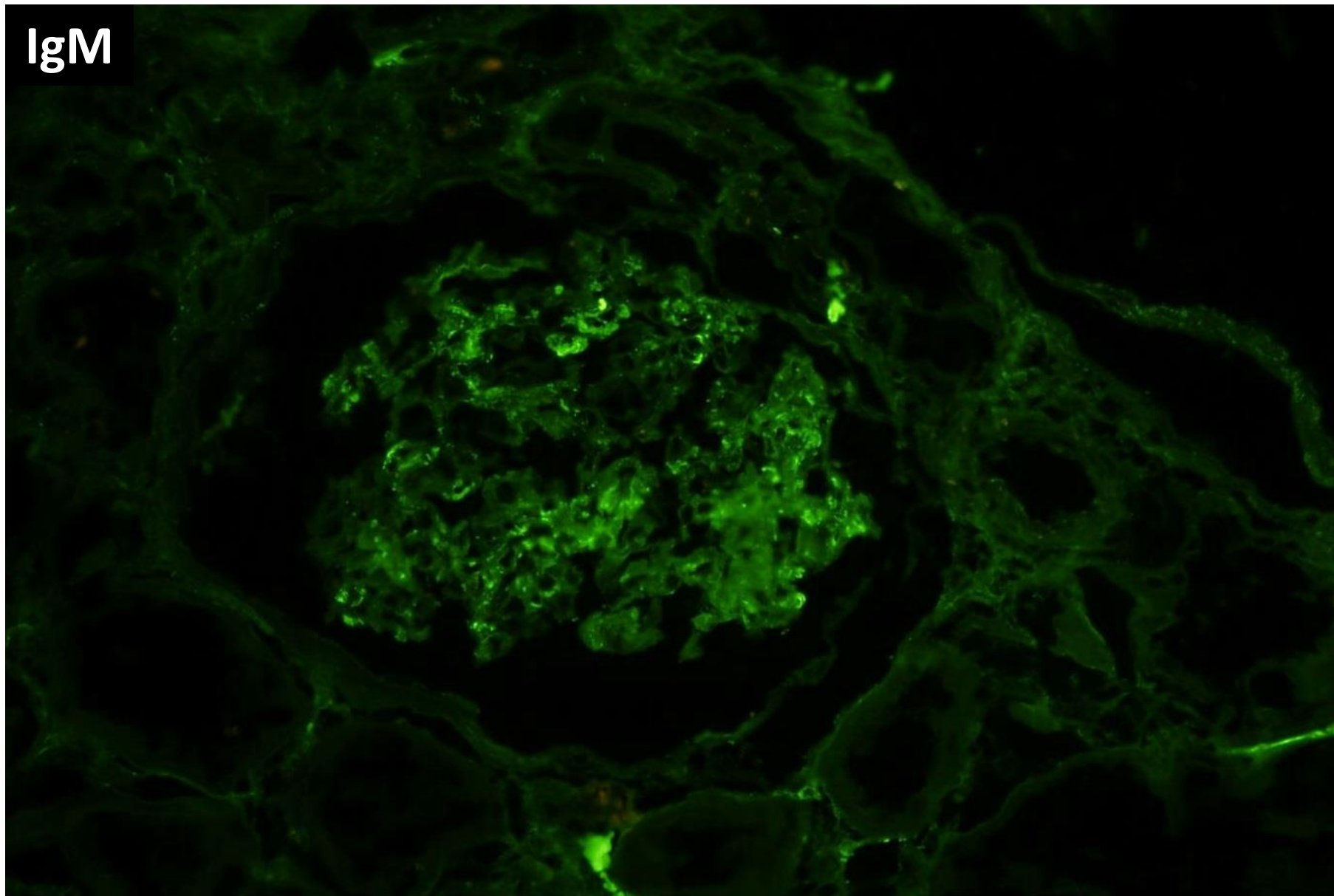
IgG



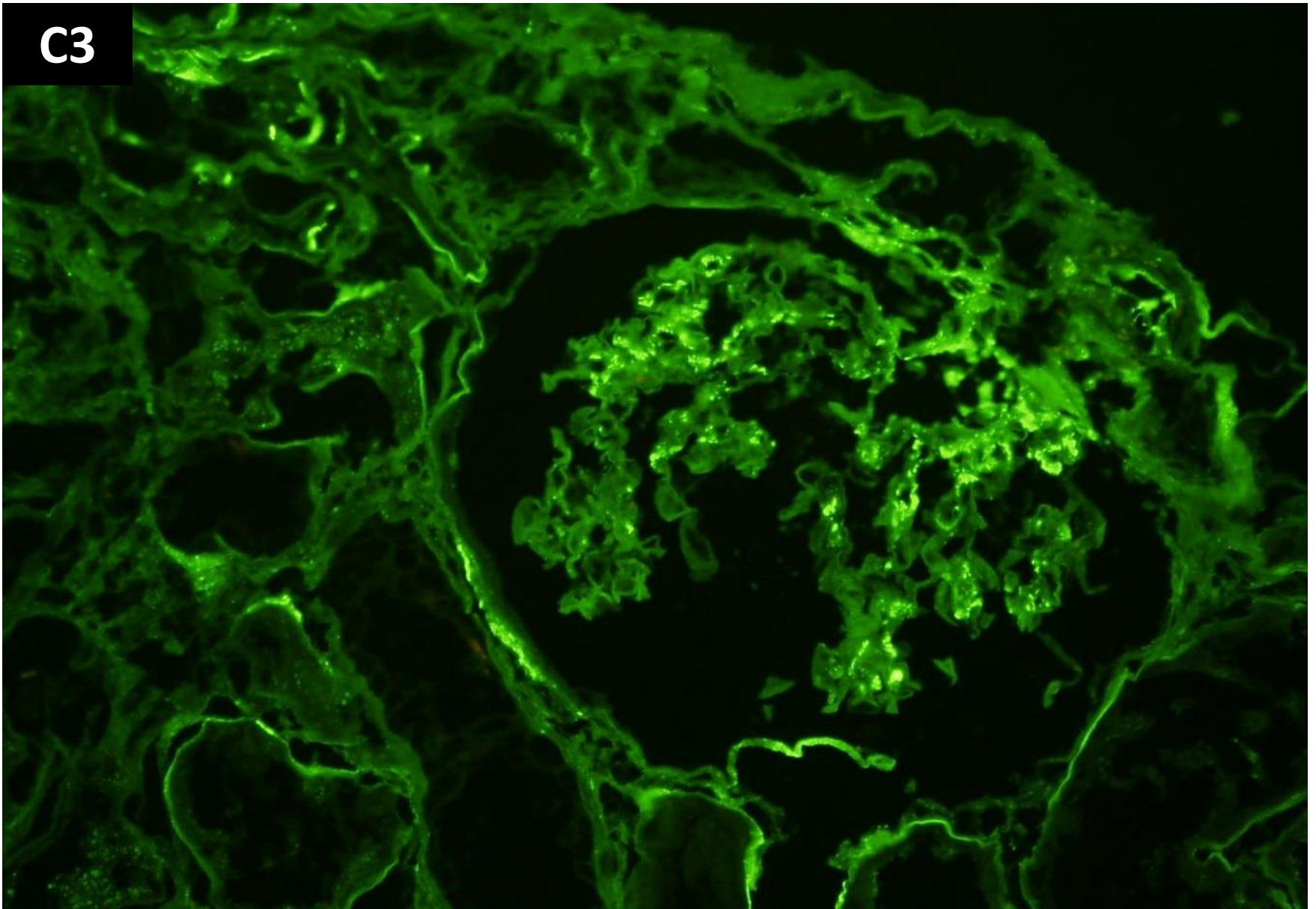
IgA

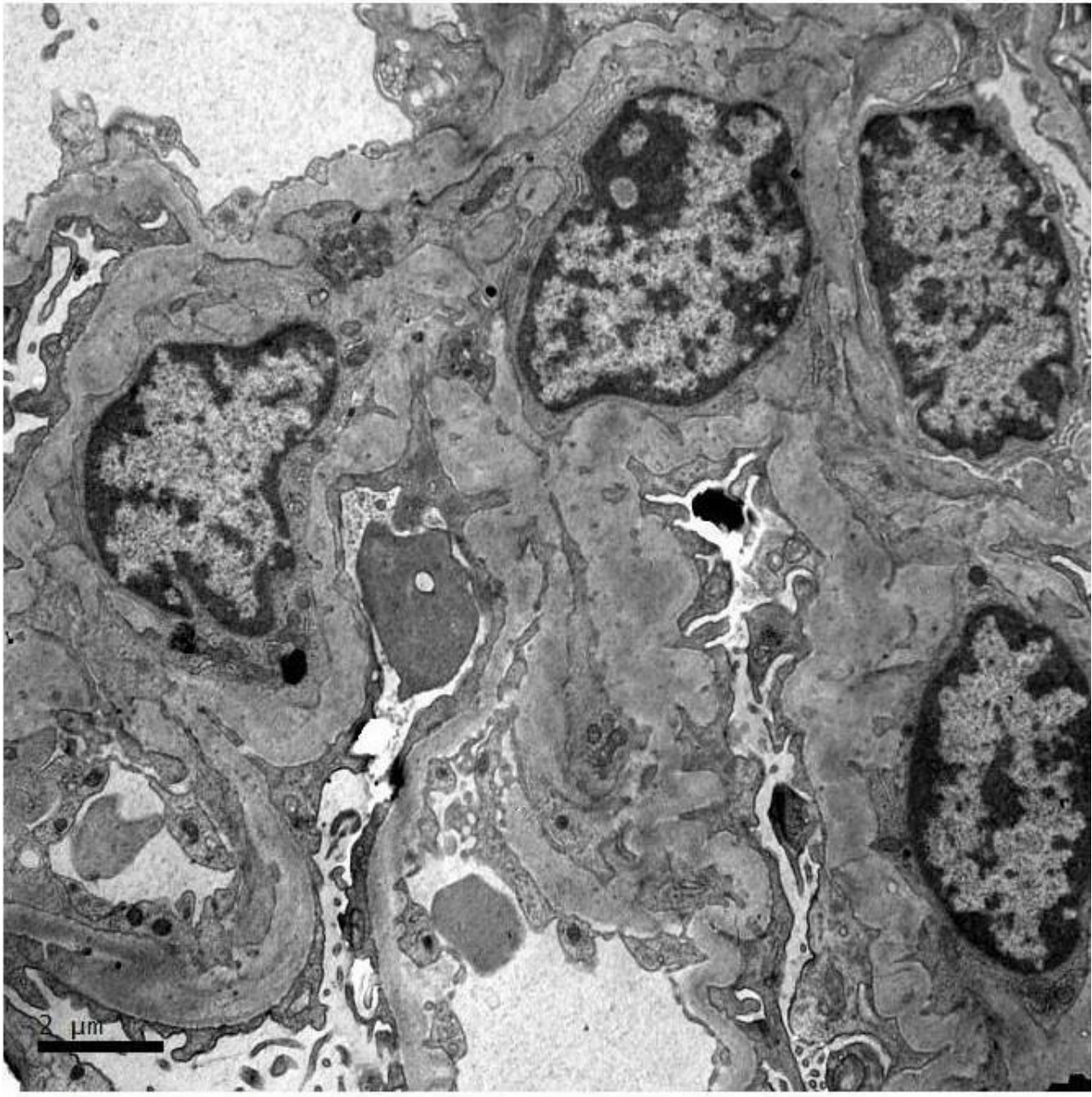


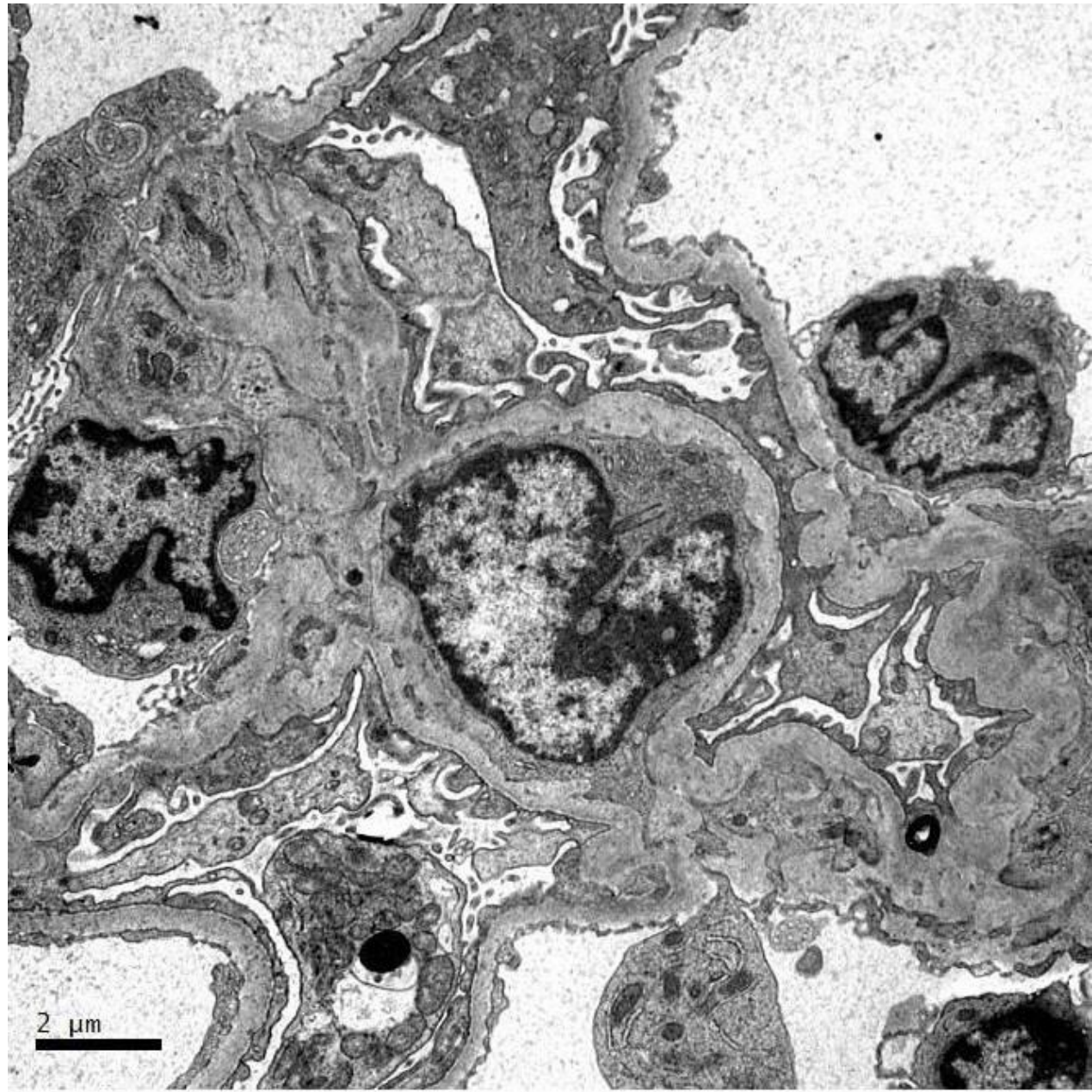
IgM

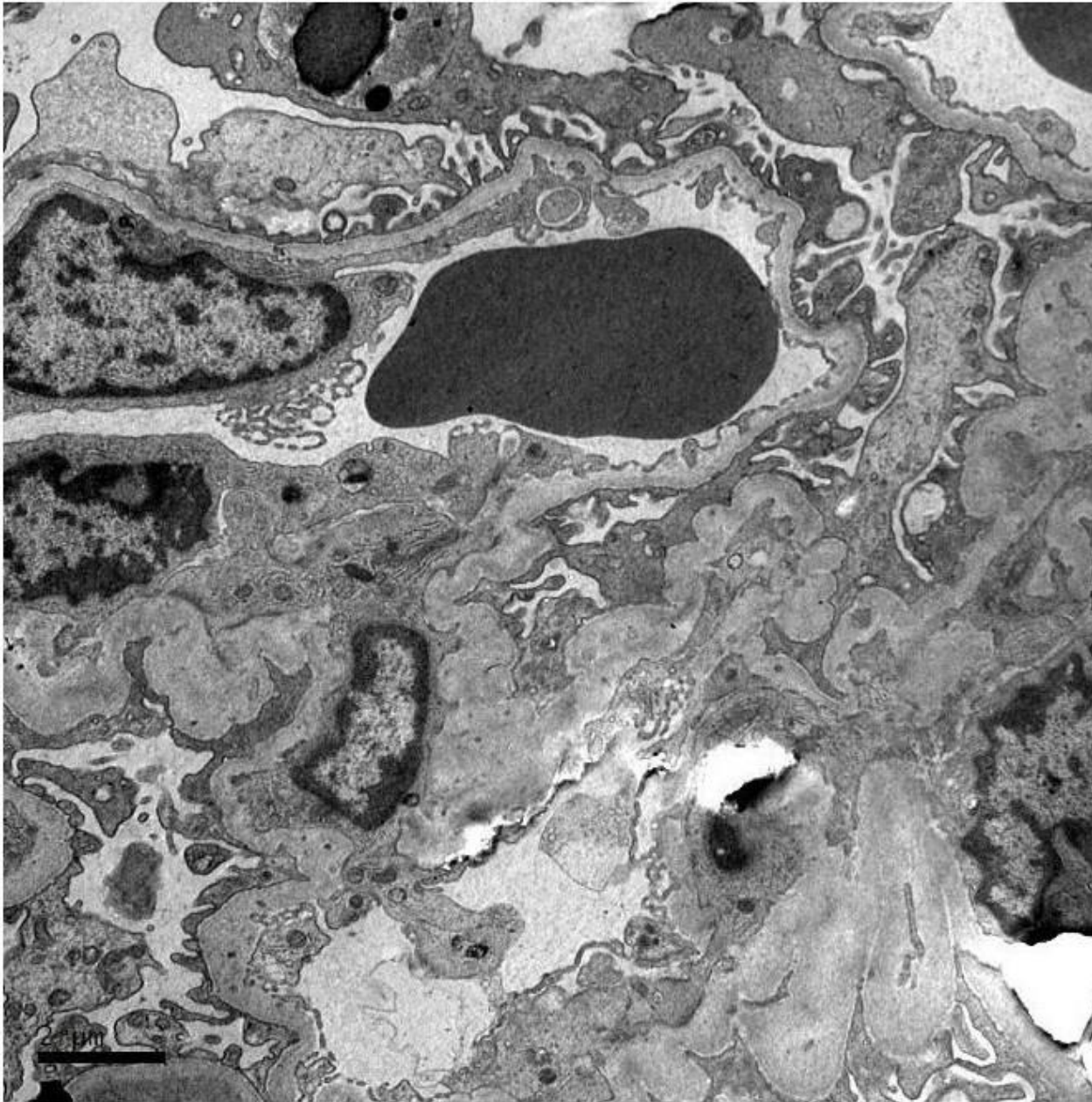


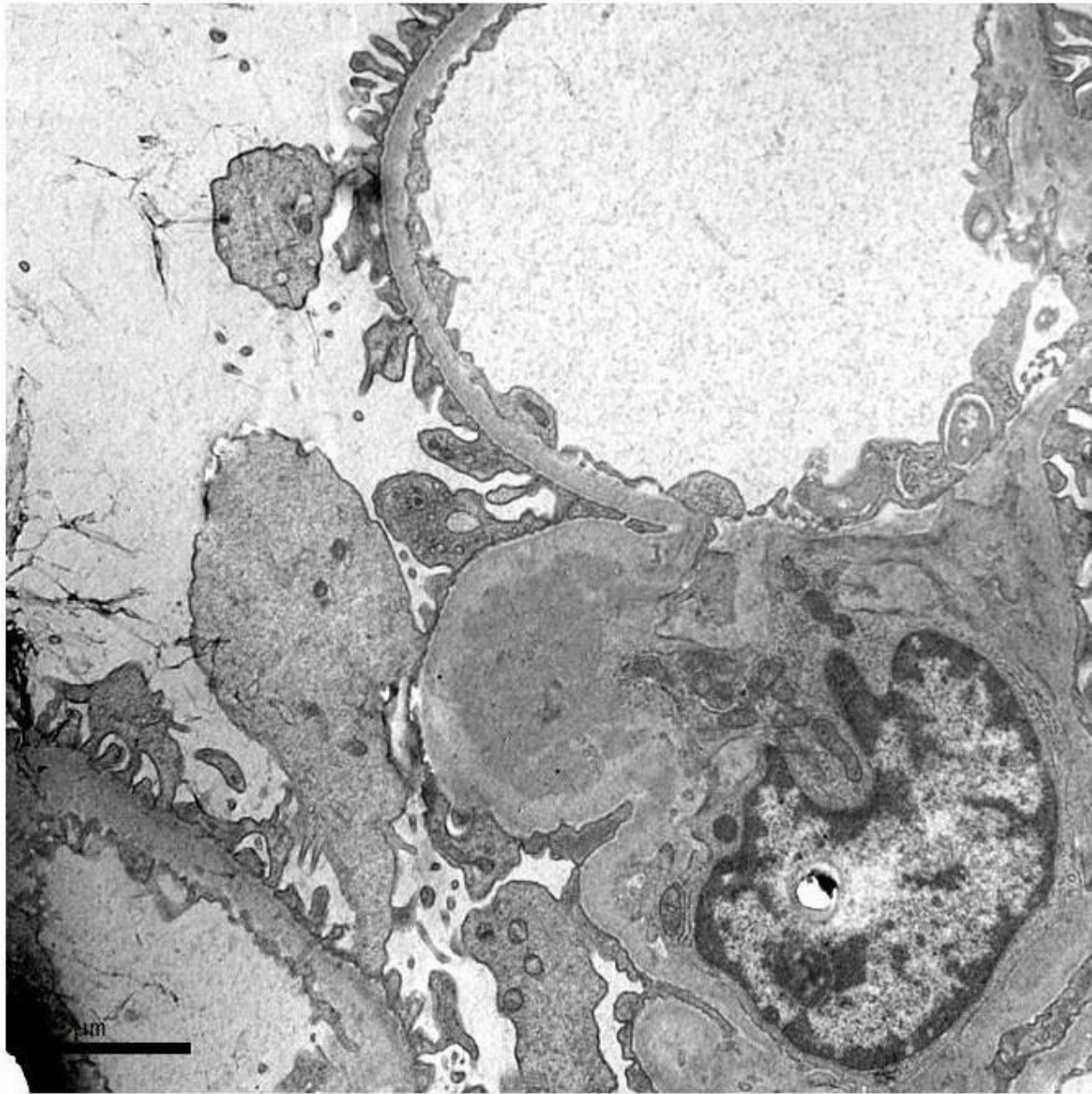
C3

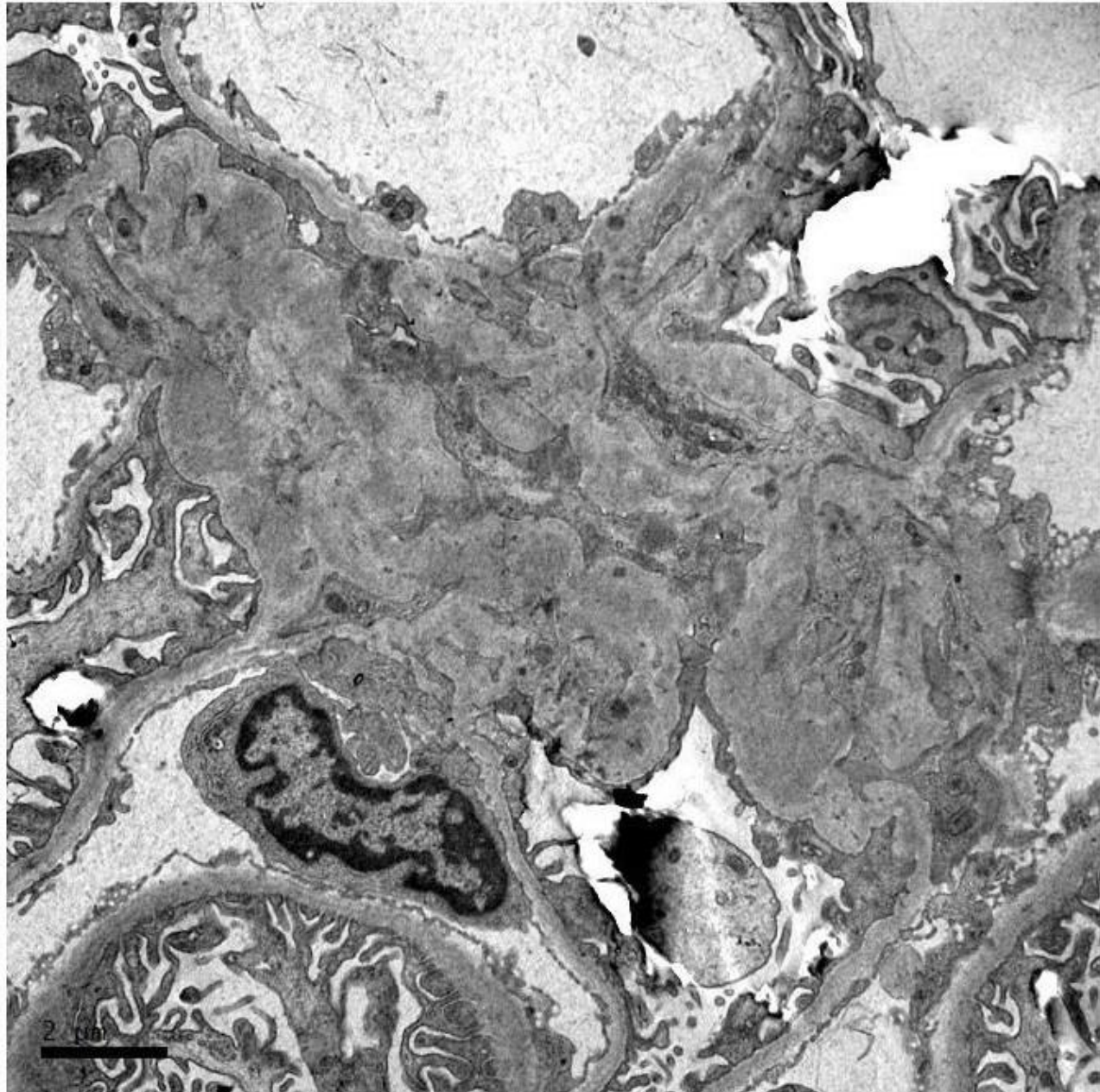


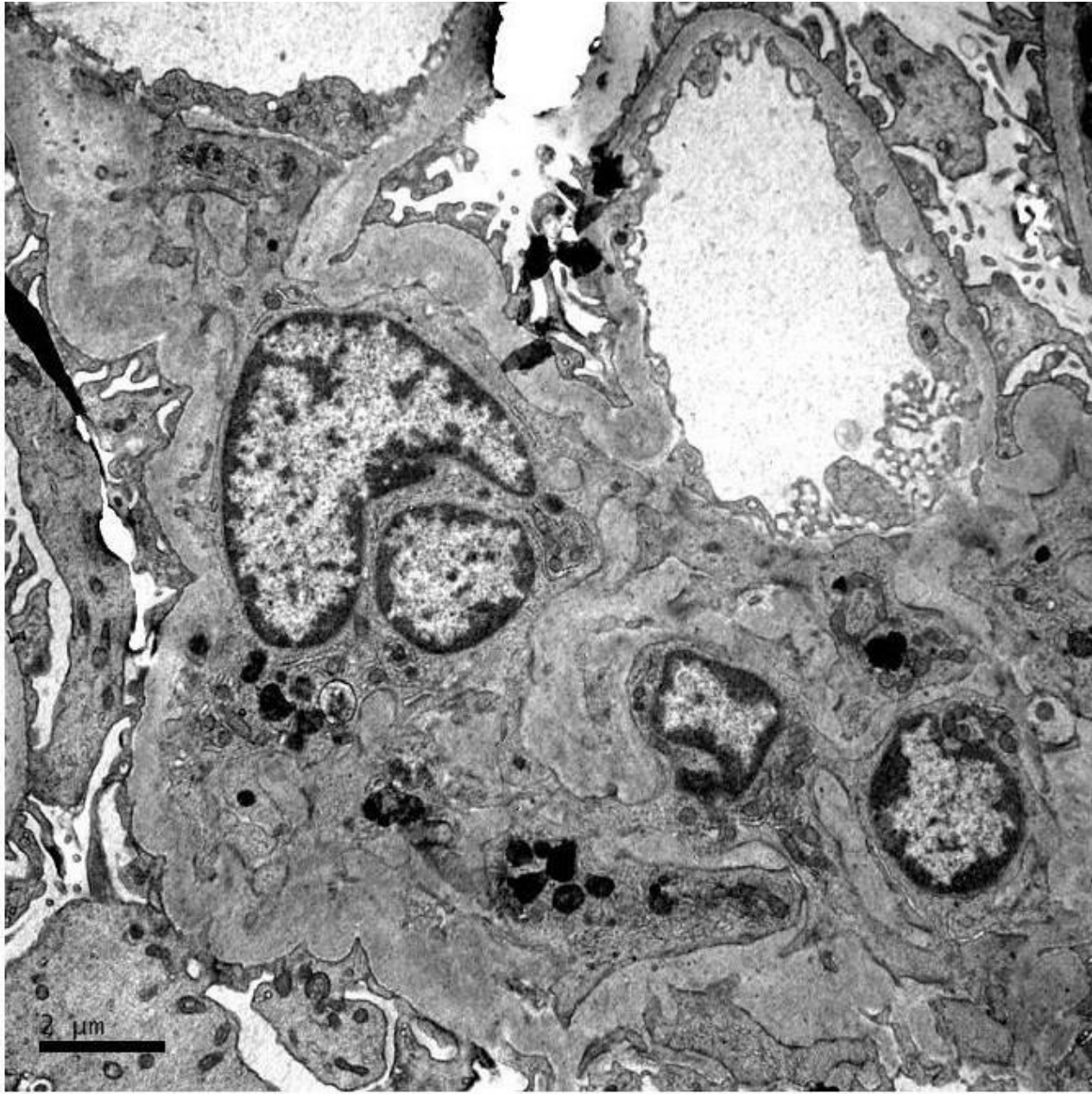


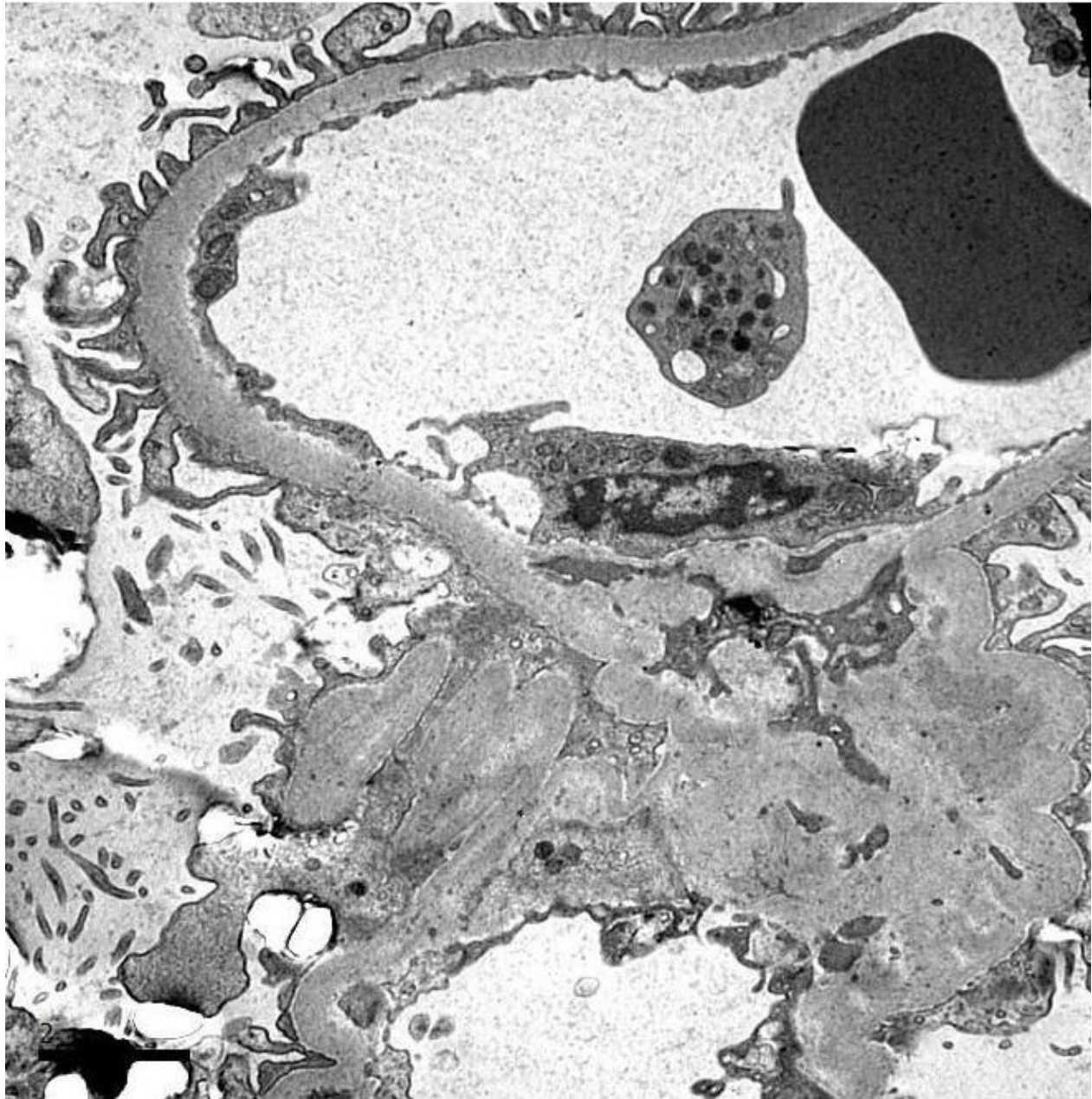














RENAL BIOPSY CLINICOPATHOLOGICAL WORKSHOP 2018



PATHOLOGY



Division of Pathology
Singapore General Hospital



Department of Renal Medicine
Singapore General Hospital



MEDICINE