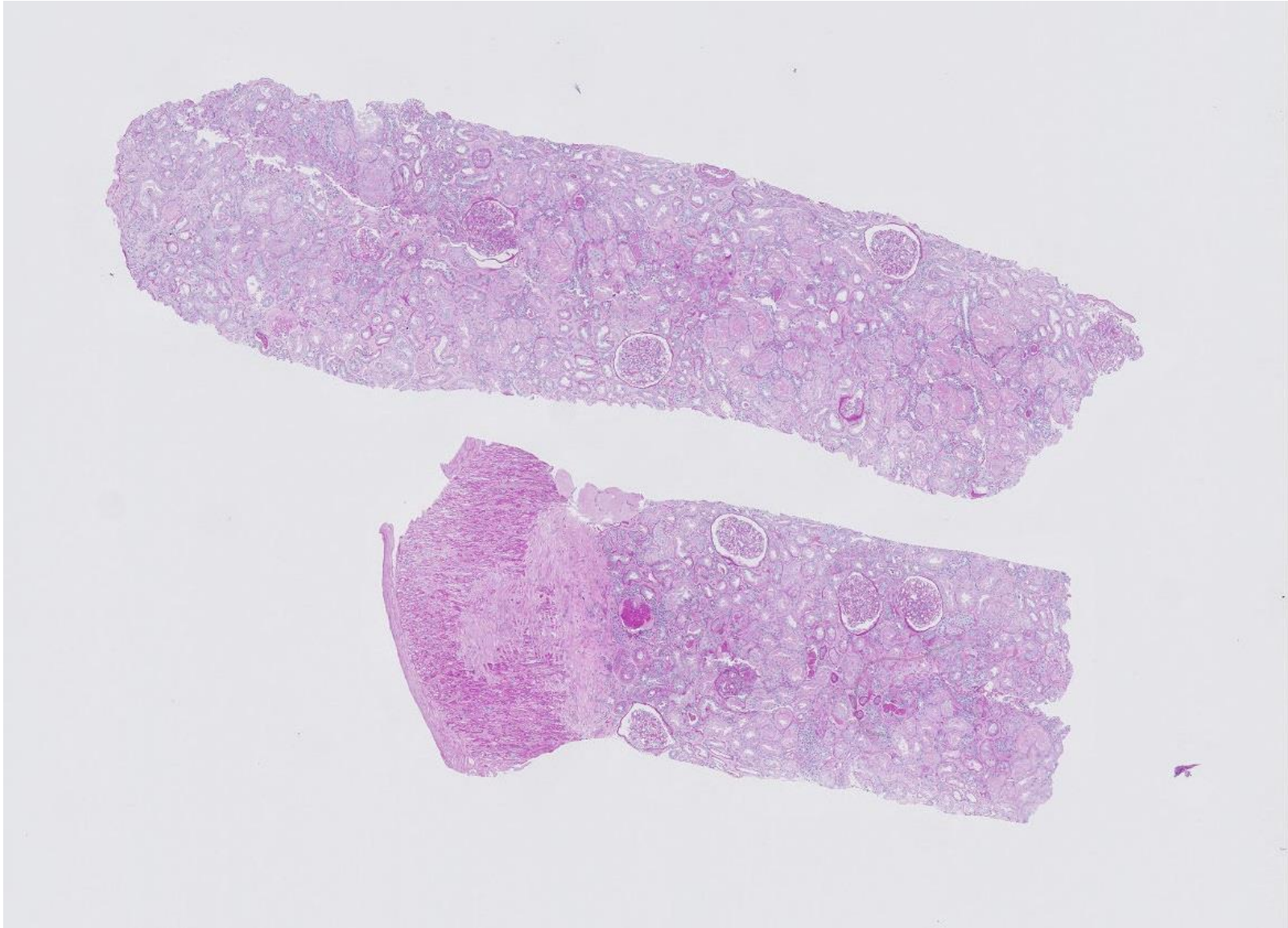
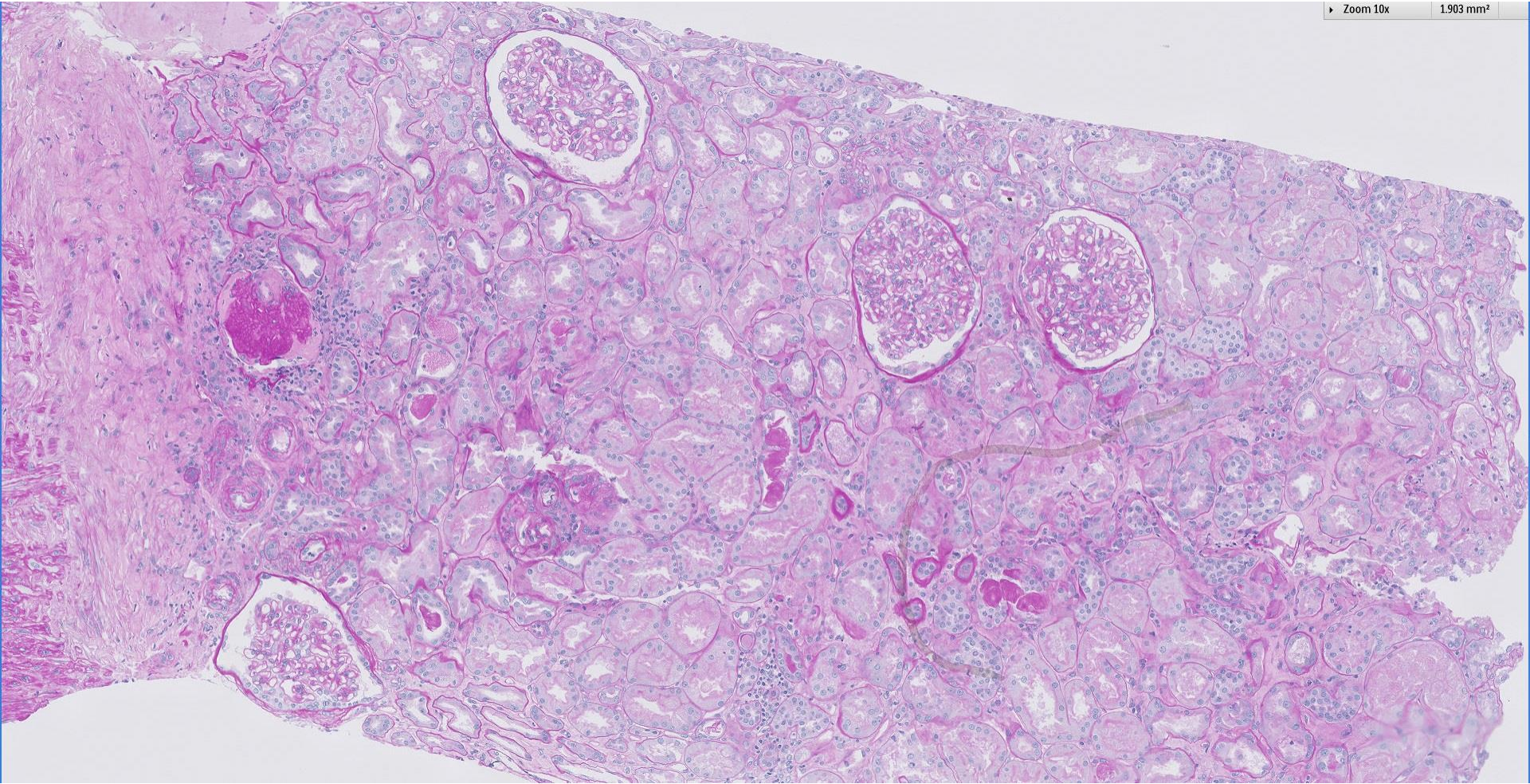
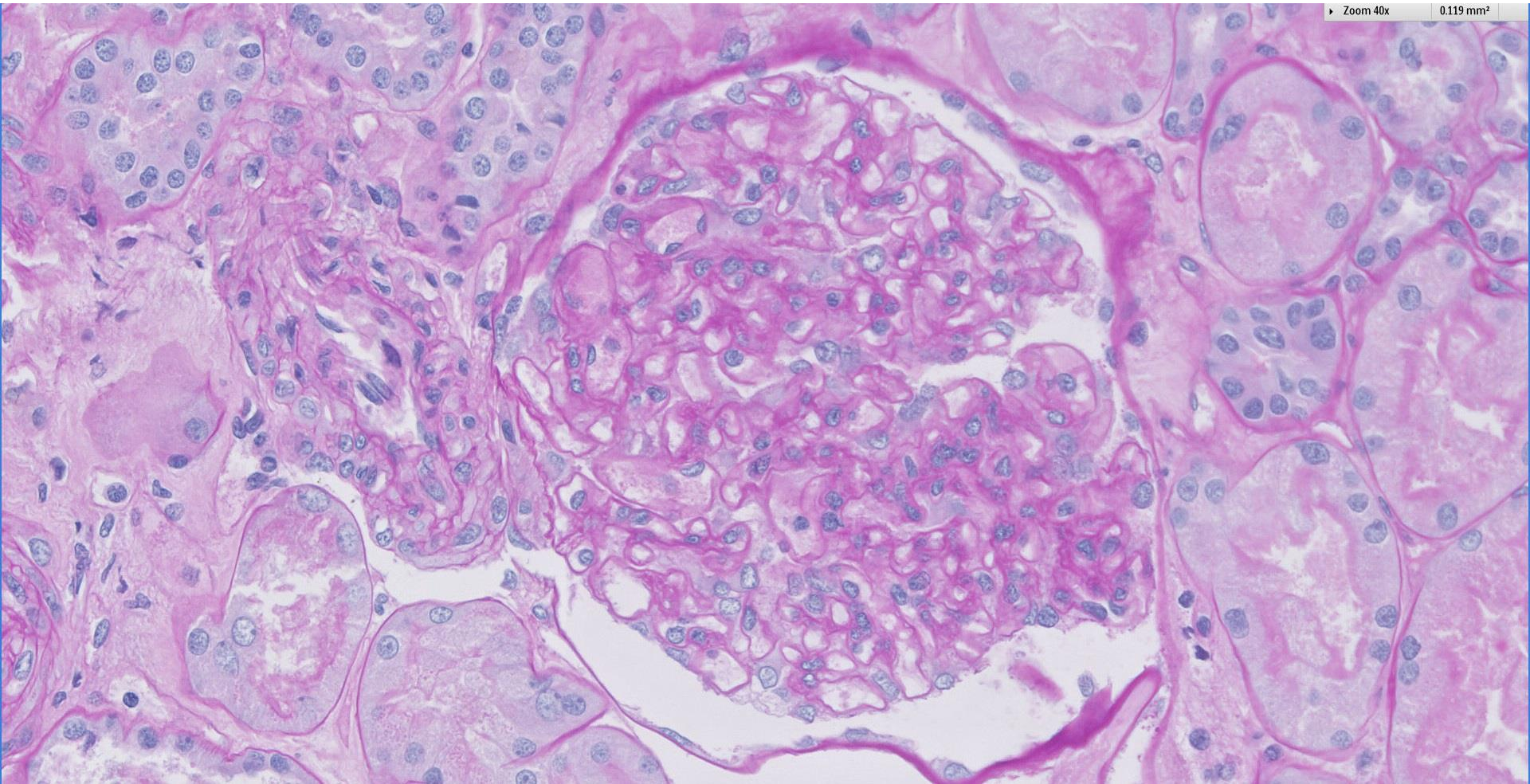


Case 4

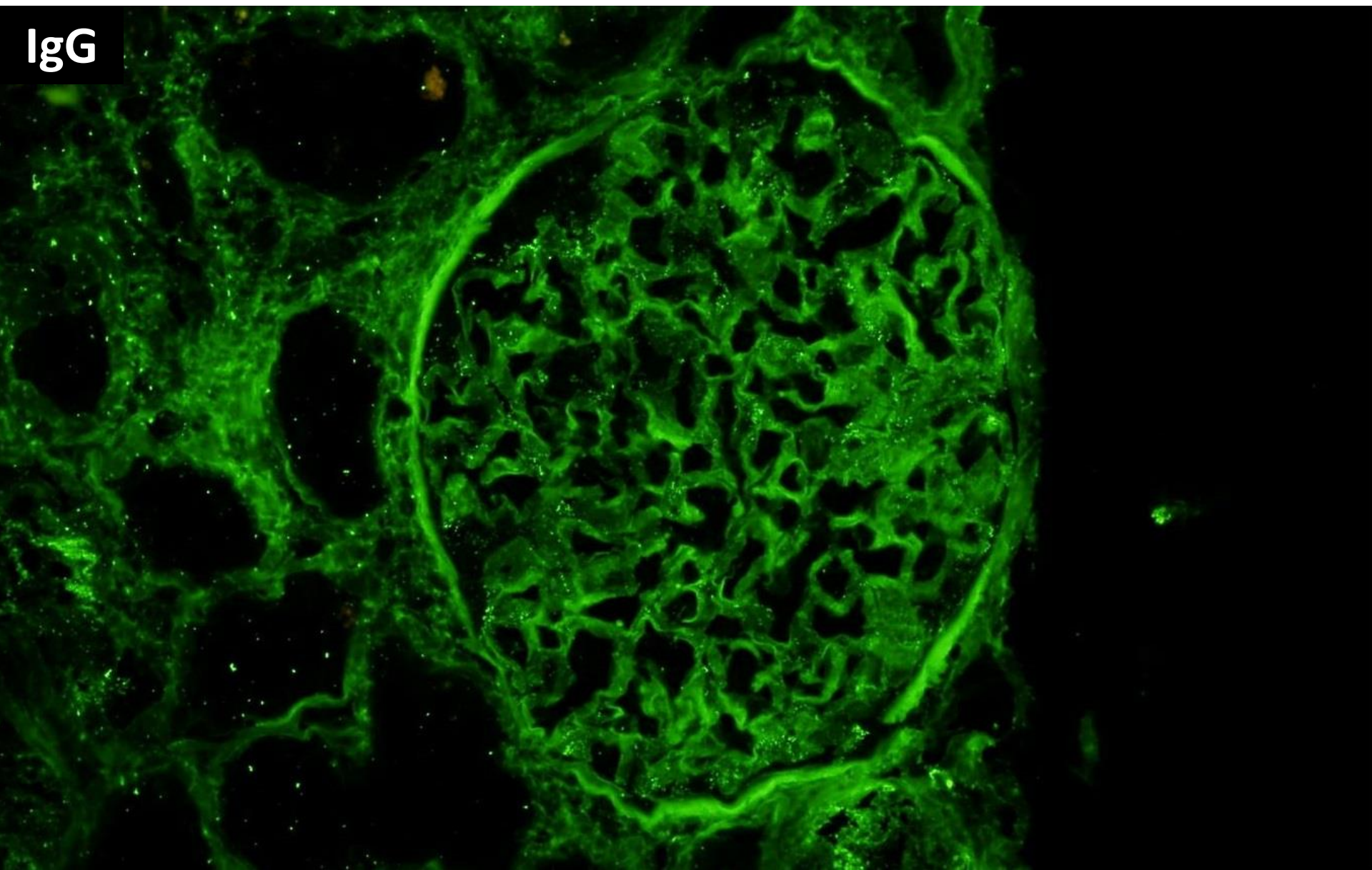
66 year old diabetic male with nephrotic syndrome and AKI.



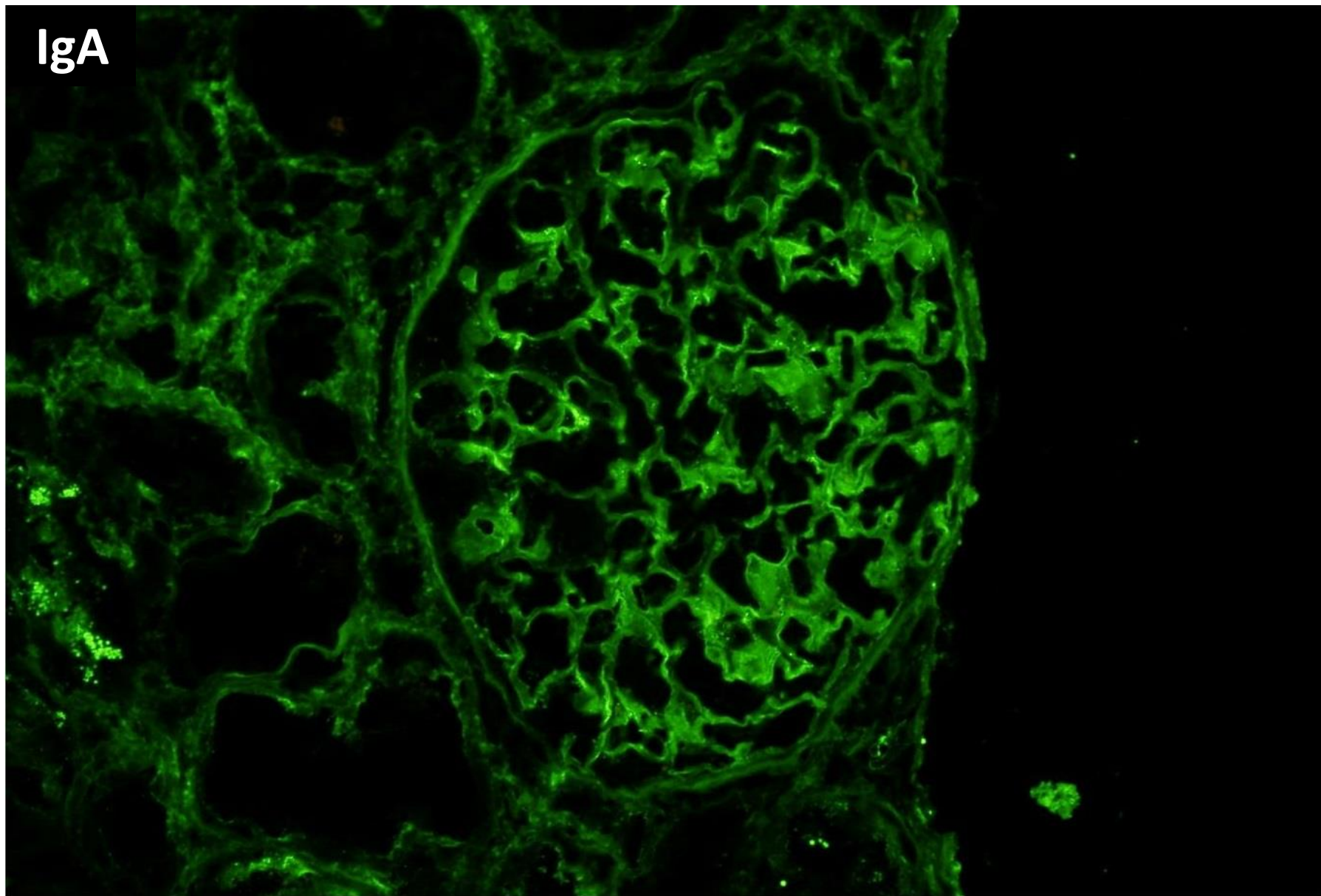




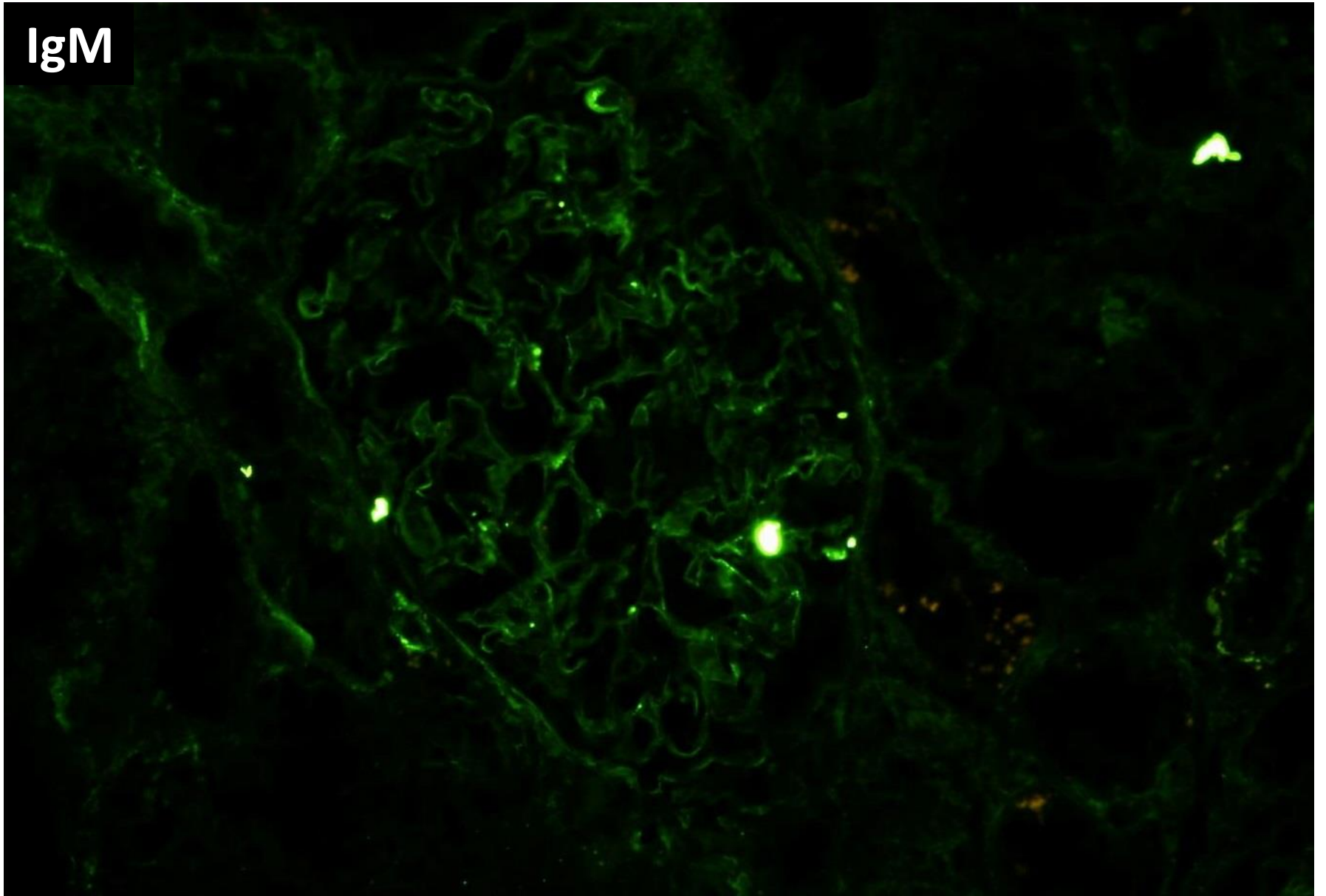
IgG



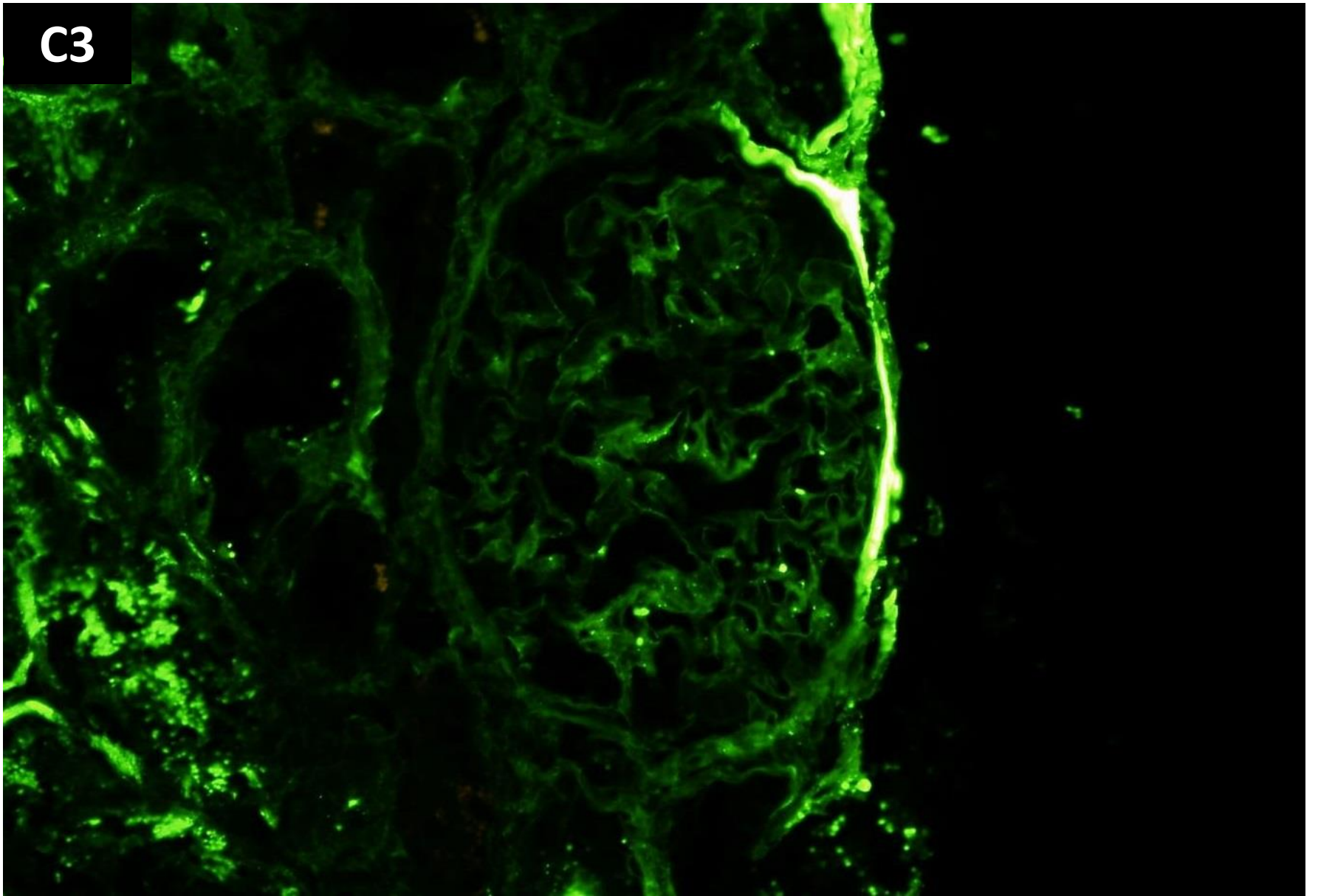
IgA



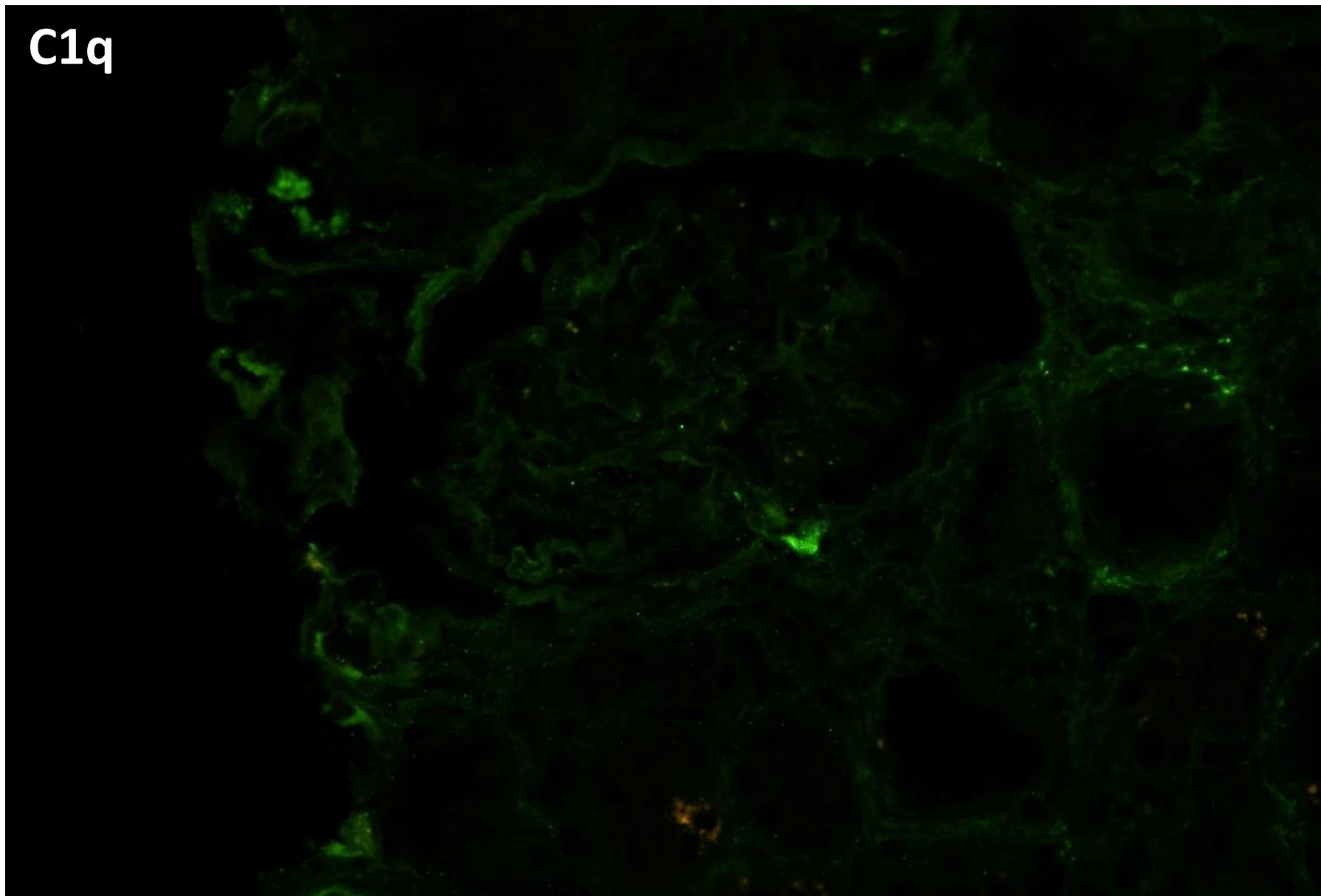
IgM



C3



C1q



Tissue received for electron microscopy showed no
glomeruli.
Ultrastructural studies were not performed.



RENAL BIOPSY CLINICOPATHOLOGICAL WORKSHOP 2018



PATHOLOGY



Division of Pathology
Singapore General Hospital



Department of Renal Medicine
Singapore General Hospital



MEDICINE