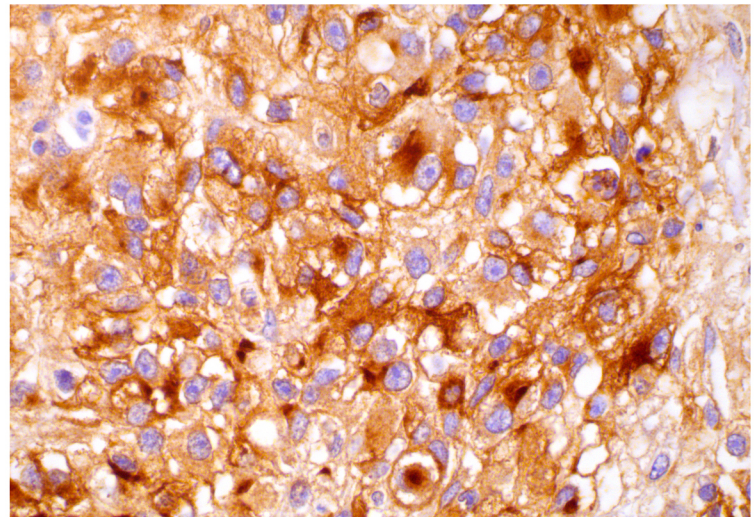
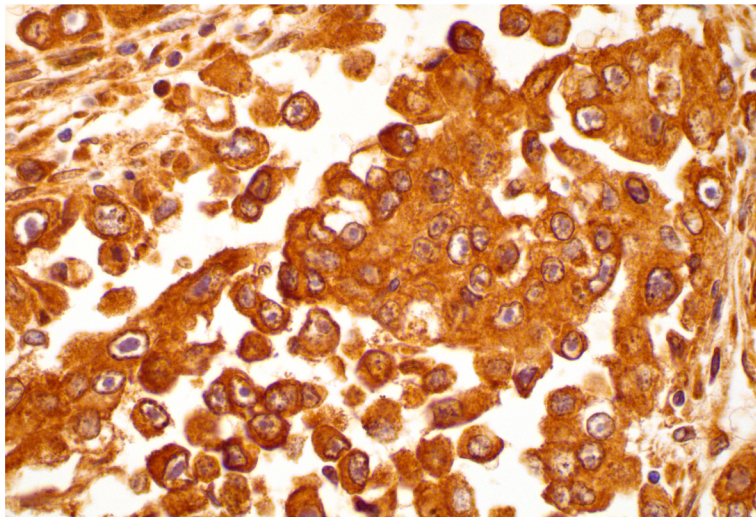
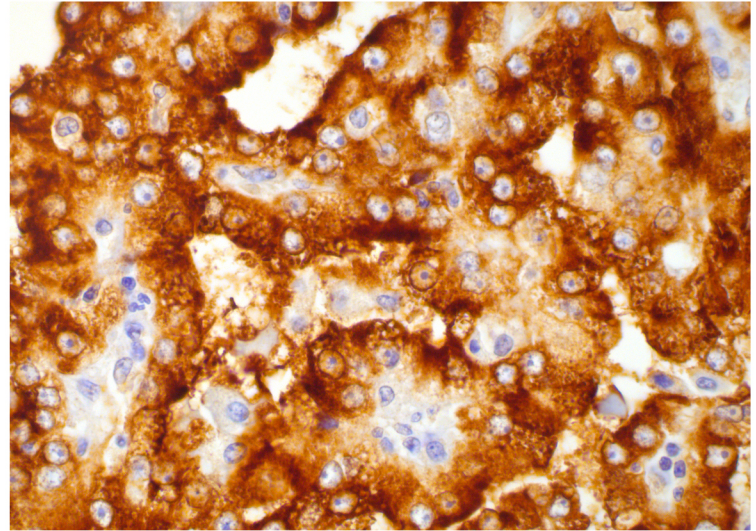
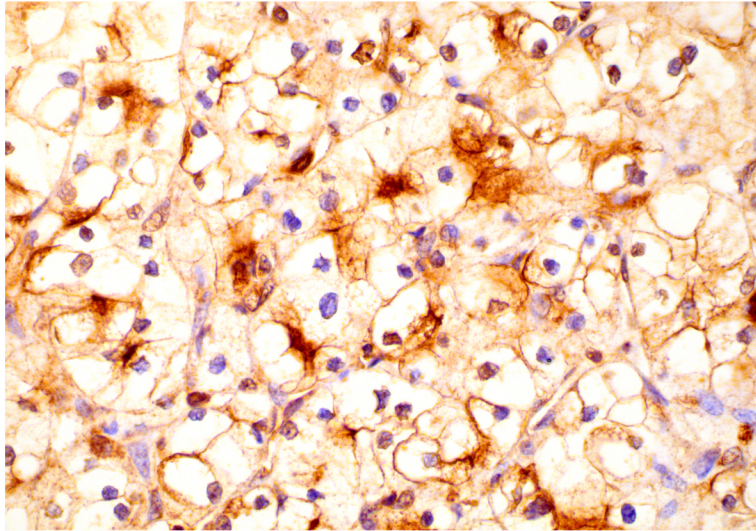


RCC gp200

The Renal Cell Carcinoma Marker (gp200) is located along the brush border of the pars convoluta and pars recta segments of the proximal tubule and the luminal surface of the Bowman's capsule in the normal kidney. It is also expressed along the luminal surfaces of breast lobules and ducts, the luminal surfaces of the epididymal tubular epithelium and within the cytoplasm of parathyroid epithelial cells.

Positive control tissues: Kidney, renal cell carcinoma

Vendor, Clone No.	Instrument	Detection	Antibody Concentration	Pre-treatment
Thermo Scientific, clone PN-15	Bondmax	Polymer Refine kit, Vision Biosystem DS9800	1:50 for 20 mins	Enzyme 3 for 10 mins



Applications:

This antibody is often used as part of a panel to identify metastatic cancers of renal origin, particularly with regard to clear cell carcinoma of uncertain lineage. As a marker of proximal nephrogenic differentiation, RCC stains 85-93% of primary and 84% of metastatic renal cell carcinomas [1-4]. In contrast, it is negative in the adrenocortical tumors and hepatocellular carcinomas [3]. Among renal cell carcinomas, this marker is expressed primarily in clear cell and papillary carcinoma subtypes. In contrast, it is generally negative in oncocytoma and chromophobe cell carcinoma.

Reference:

1. Oosterwijk E, Ruiters DJ, Wakka JC, Huiskens-V JW. et al. Immunohistochemical analysis of monoclonal antibodies to renal antigens: application in the diagnosis of renal cell carcinoma. *Am J Pathol* 1986;123:301-309.
2. Yoshida SO, Imam A. Monoclonal antibody to a proximal nephrogenic renal antigen: immunohistochemical analysis of formalin-fixed, paraffin-embedded human renal cell carcinomas. *Cancer Res* 1989;49:1802-1809
3. Hammock L, Ghorab Z, Gomez-Fernandez CR. Metastatic Renal Cell Carcinoma to the Ovary: A Case Report and Discussion of Differential Diagnoses. *Arch Pathol Lab Med*; 127(3): e123-e126.
4. Avery AK, Beckstead J, Renshaw AA, Corless CL. Use of antibodies to RCC and CD10 in the differential diagnosis of renal neoplasms. *Am J Surg Pathol*. 2000 Feb;24(2):203-10.