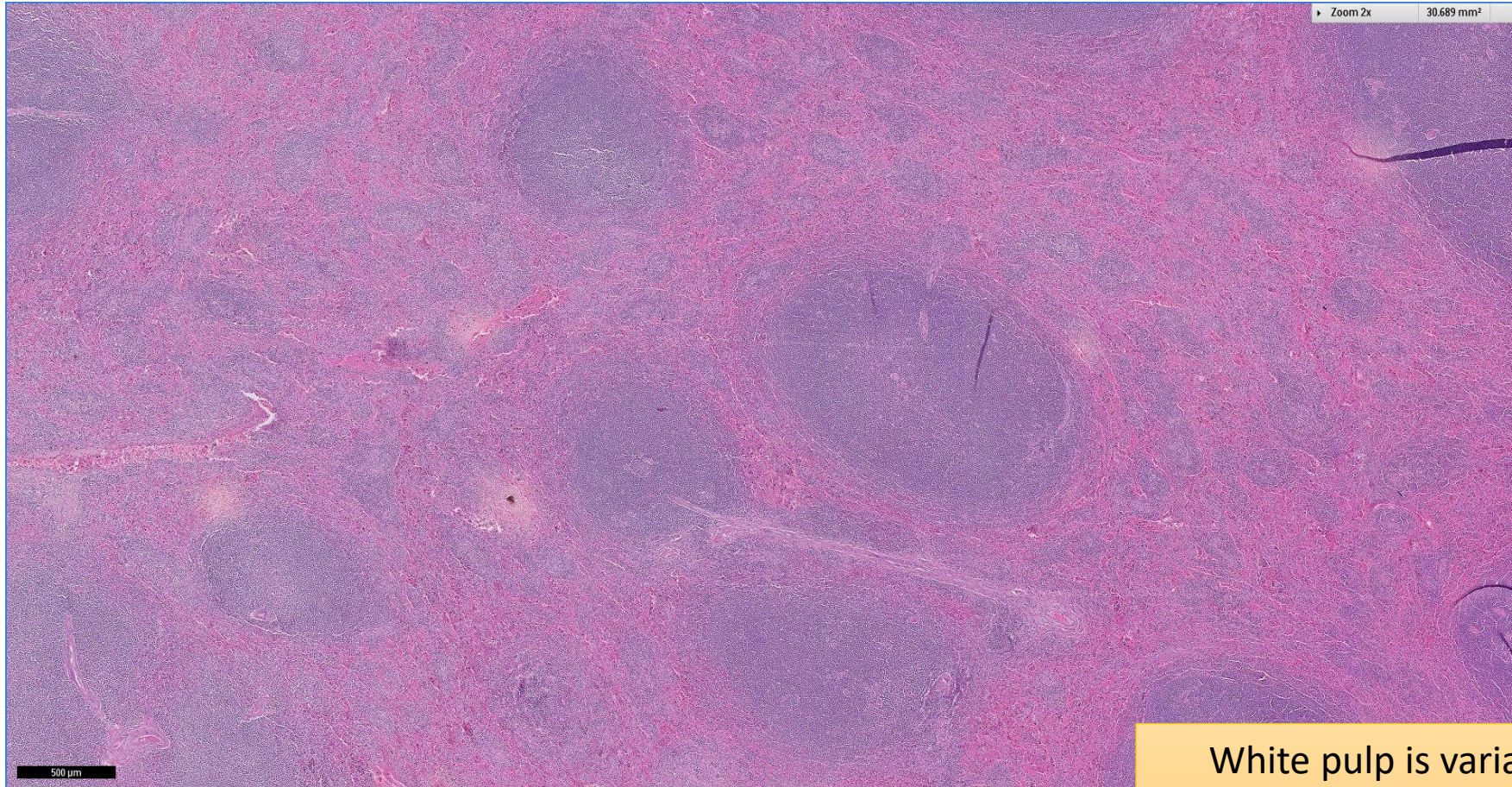


SGH CASE 43: 17RE168

- Clinical History:
 - 50+ years old, Female. Splenomegaly.
- Specimen:
 - Splenectomy specimen. Measures 30cm, weighs 1.8kg.

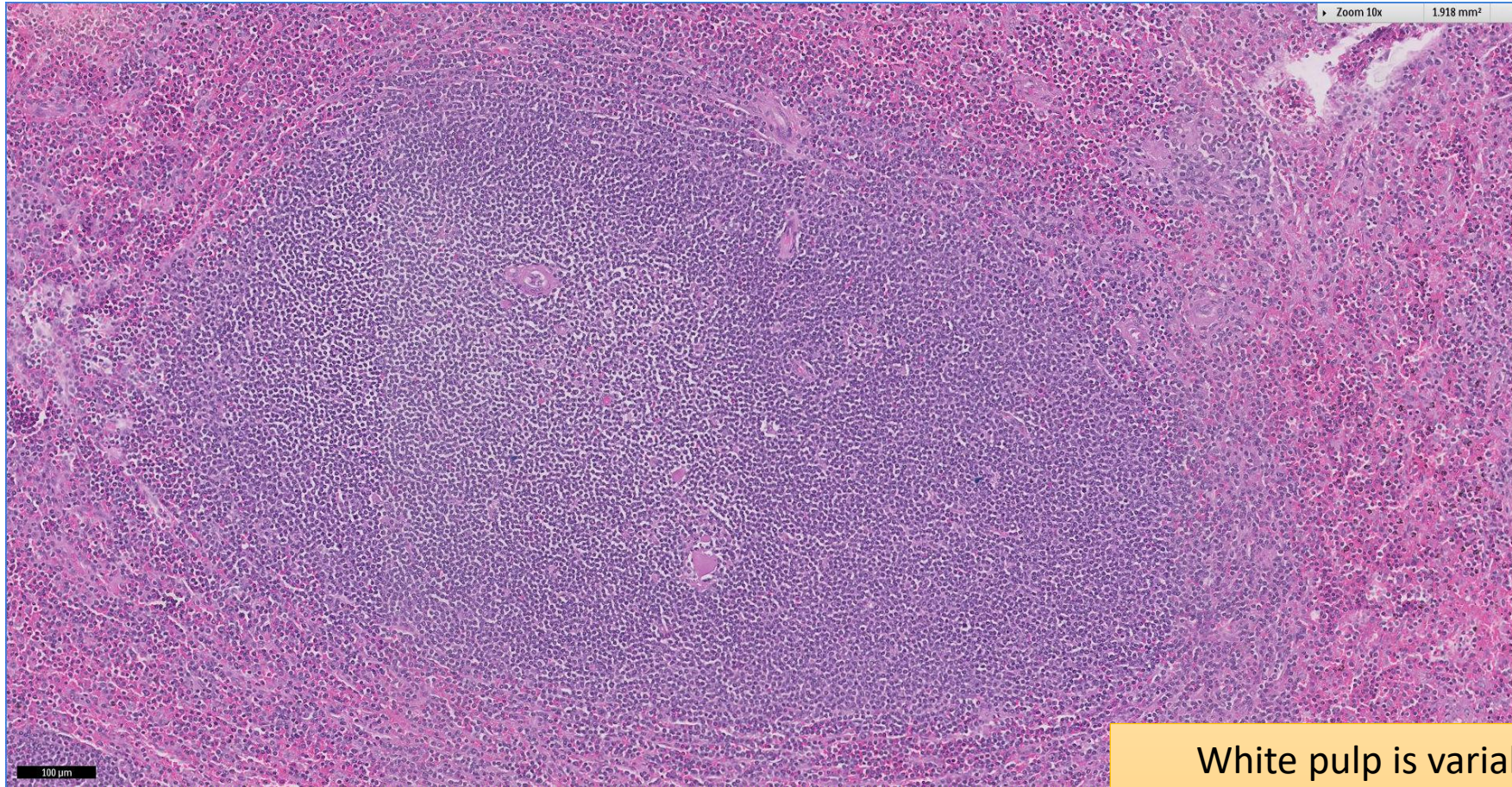
SGH CASE 43: 17RE168 H&E



SGH haematolymphoid workshop 2017. © All Materials are
Copyright of Singapore General Hospital Pathology. No Copy or
Reproduction without Permission.

White pulp is variably expanded
without discernible germinal centres
in many areas

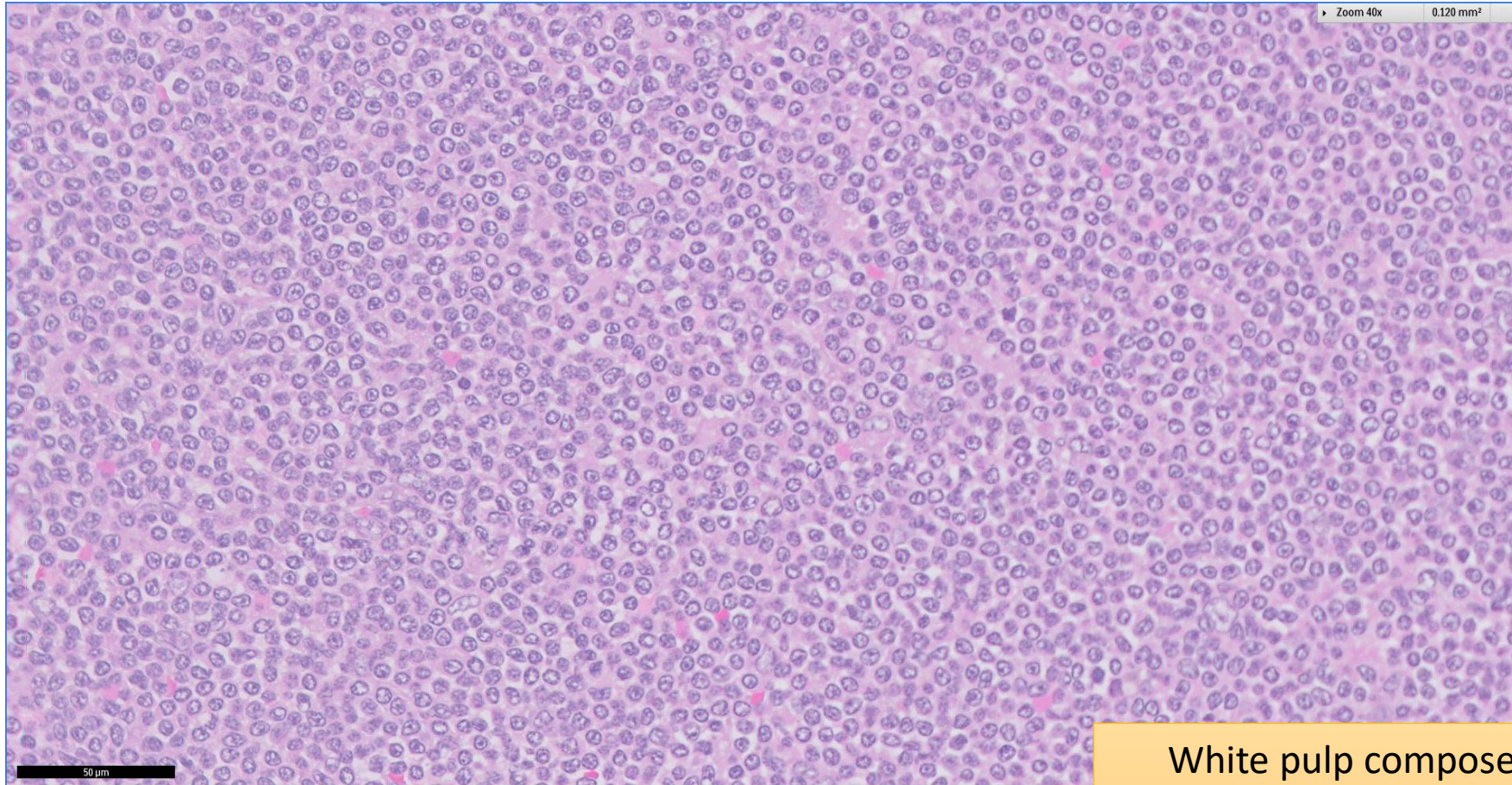
SGH CASE 43: 17RE168 H&E



SGH haematolymphoid workshop 2017. © All Materials are
Copyright of Singapore General Hospital Pathology. No Copy or
Reproduction without Permission.

White pulp is variably expanded
without discernible germinal centres in
many areas

SGH CASE 43: 17RE168 H&E



White pulp composed of relatively monomorphic infiltrate of medium-sized lymphoid cells

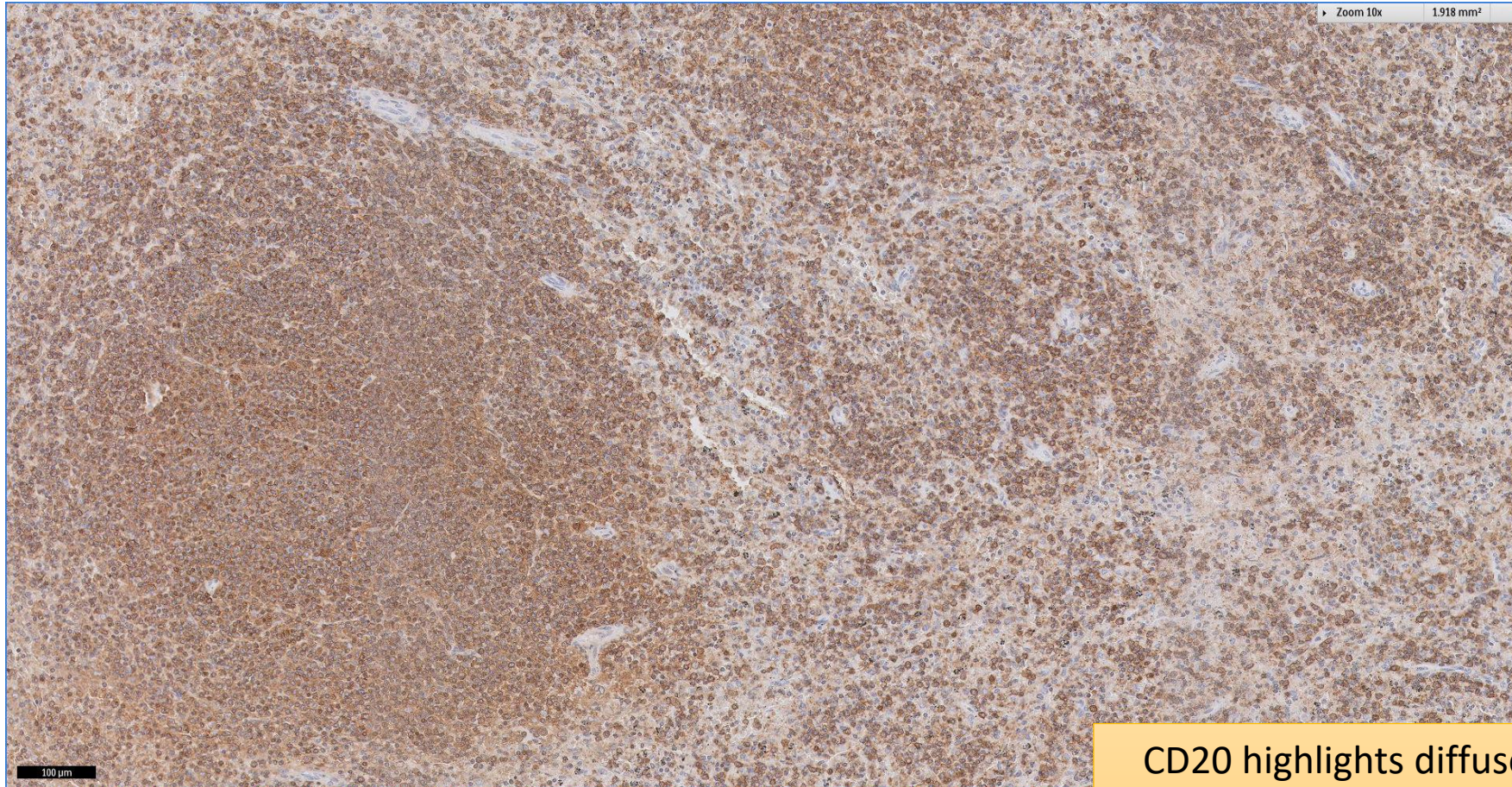
SGH CASE 43: 17RE168 CD20



SGH haematolymphoid workshop 2017. © All Materials are
Copyright of Singapore General Hospital Pathology. No Copy or
Reproduction without Permission.

CD20 highlights diffuse infiltrate of B-cells in the white pulp as well as clusters of B-cells in the red pulp

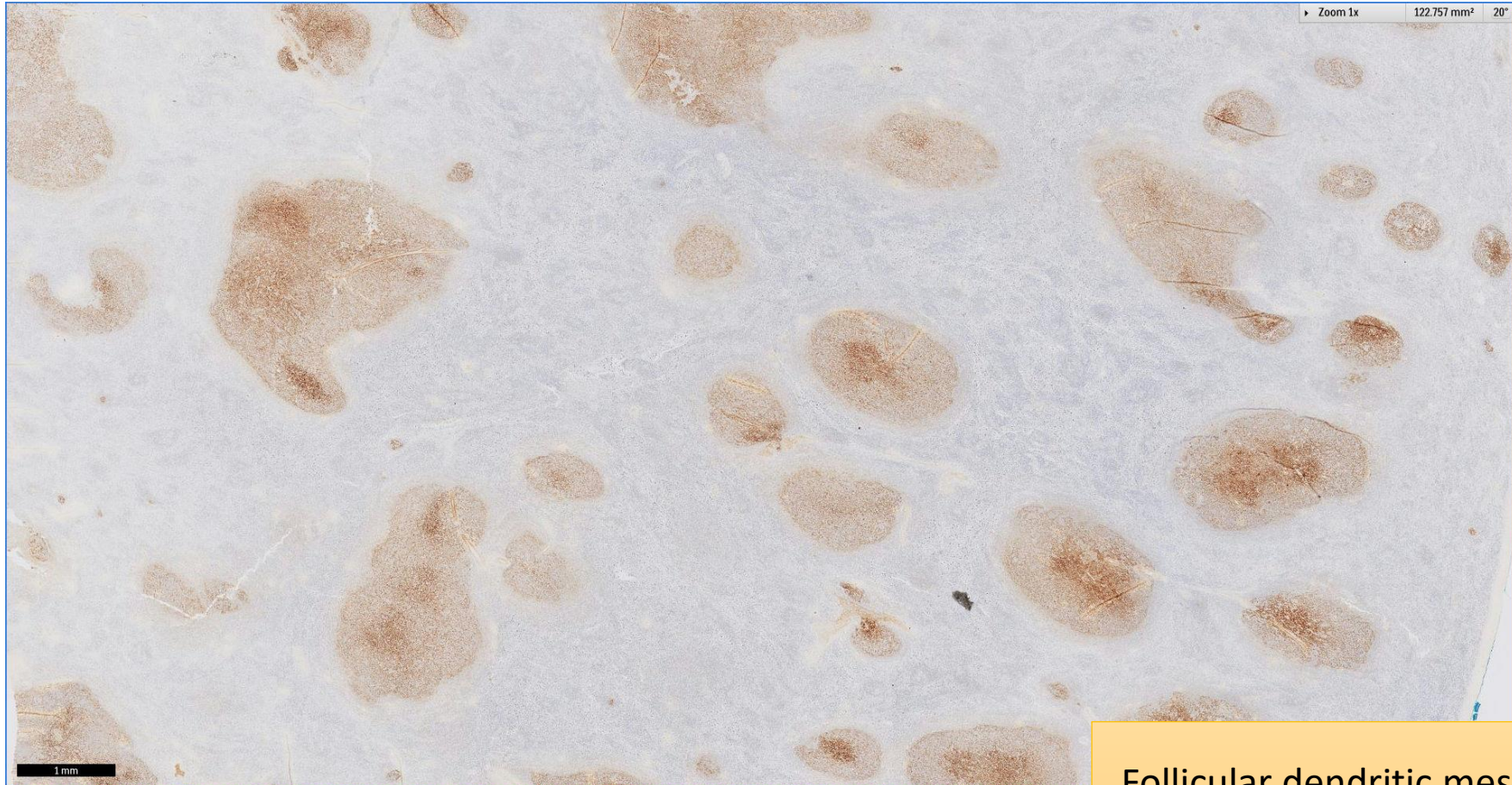
SGH CASE 43: 17RE168 CD20



SGH haematolymphoid workshop 2017. © All Materials are
Copyright of Singapore General Hospital Pathology. No Copy or
Reproduction without Permission.

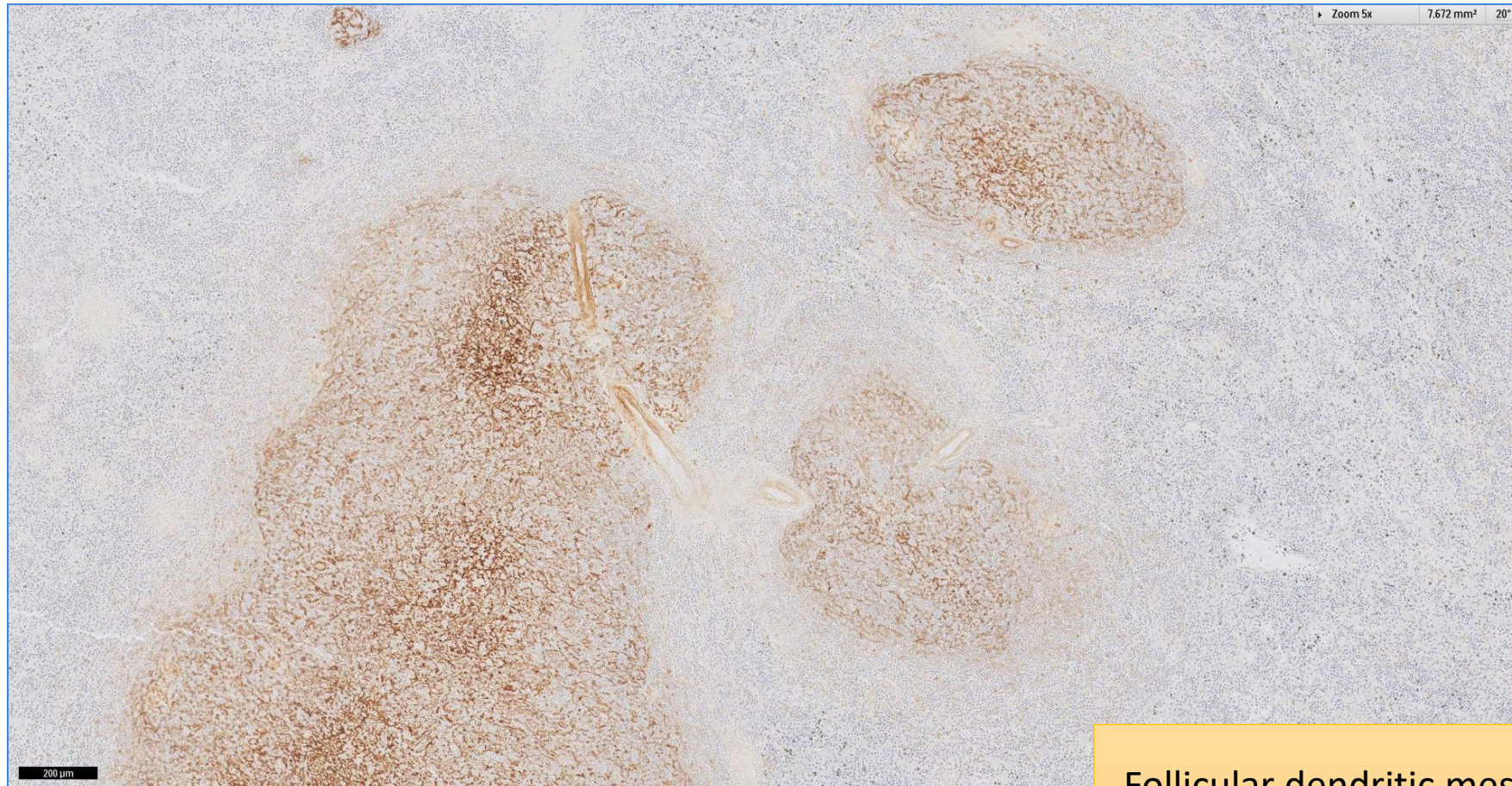
CD20 highlights diffuse infiltrate of B-cells in the white pulp as well as clusters of B-cells in the red pulp

SGH CASE 43: 17RE168 CD21



Follicular dendritic meshworks are well-circumscribed

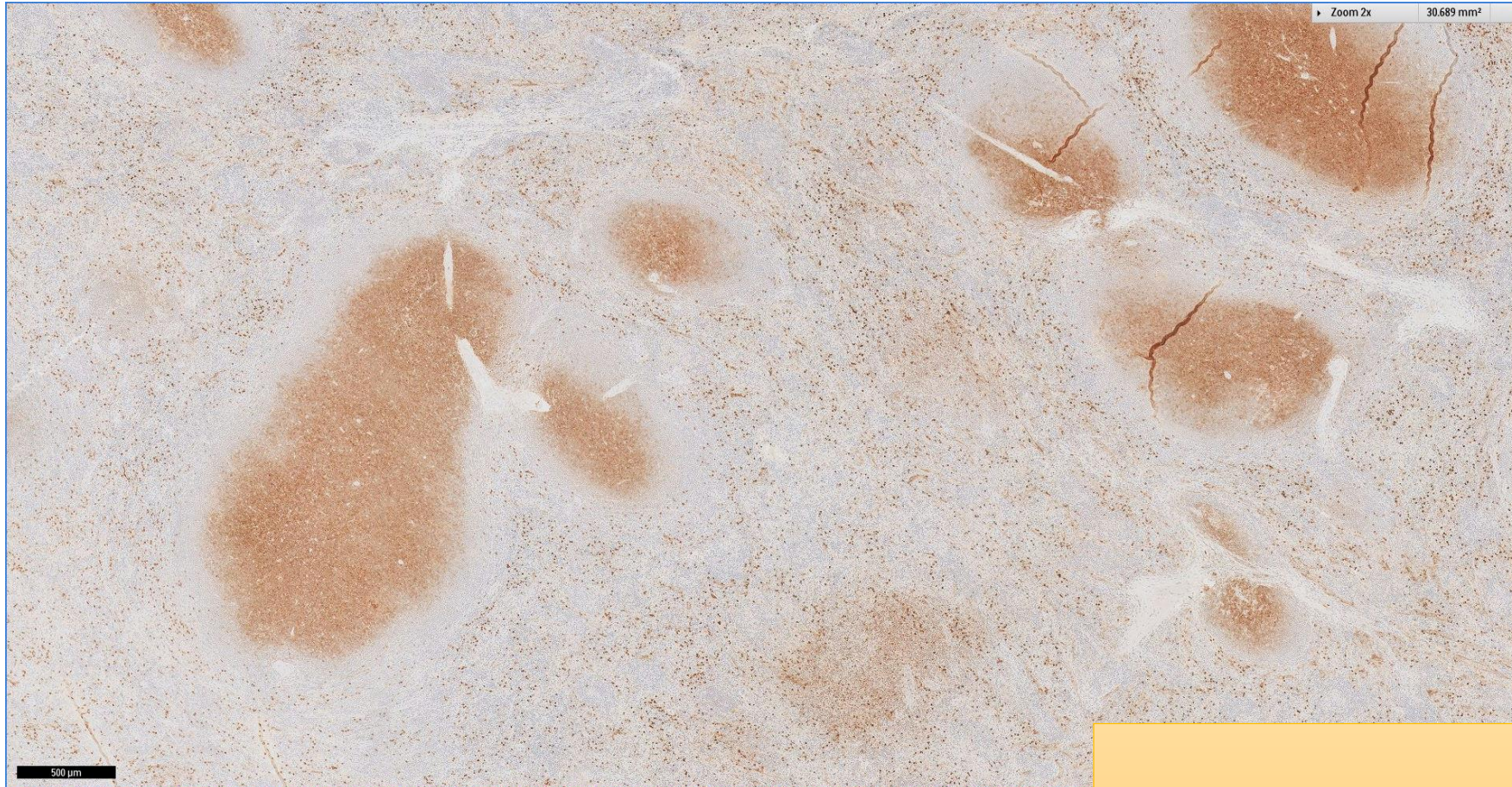
SGH CASE 43: 17RE168 CD21



SGH haematolymphoid workshop 2017. © All Materials are
Copyright of Singapore General Hospital Pathology. No Copy or
Reproduction without Permission.

Follicular dendritic meshworks are well-circumscribed

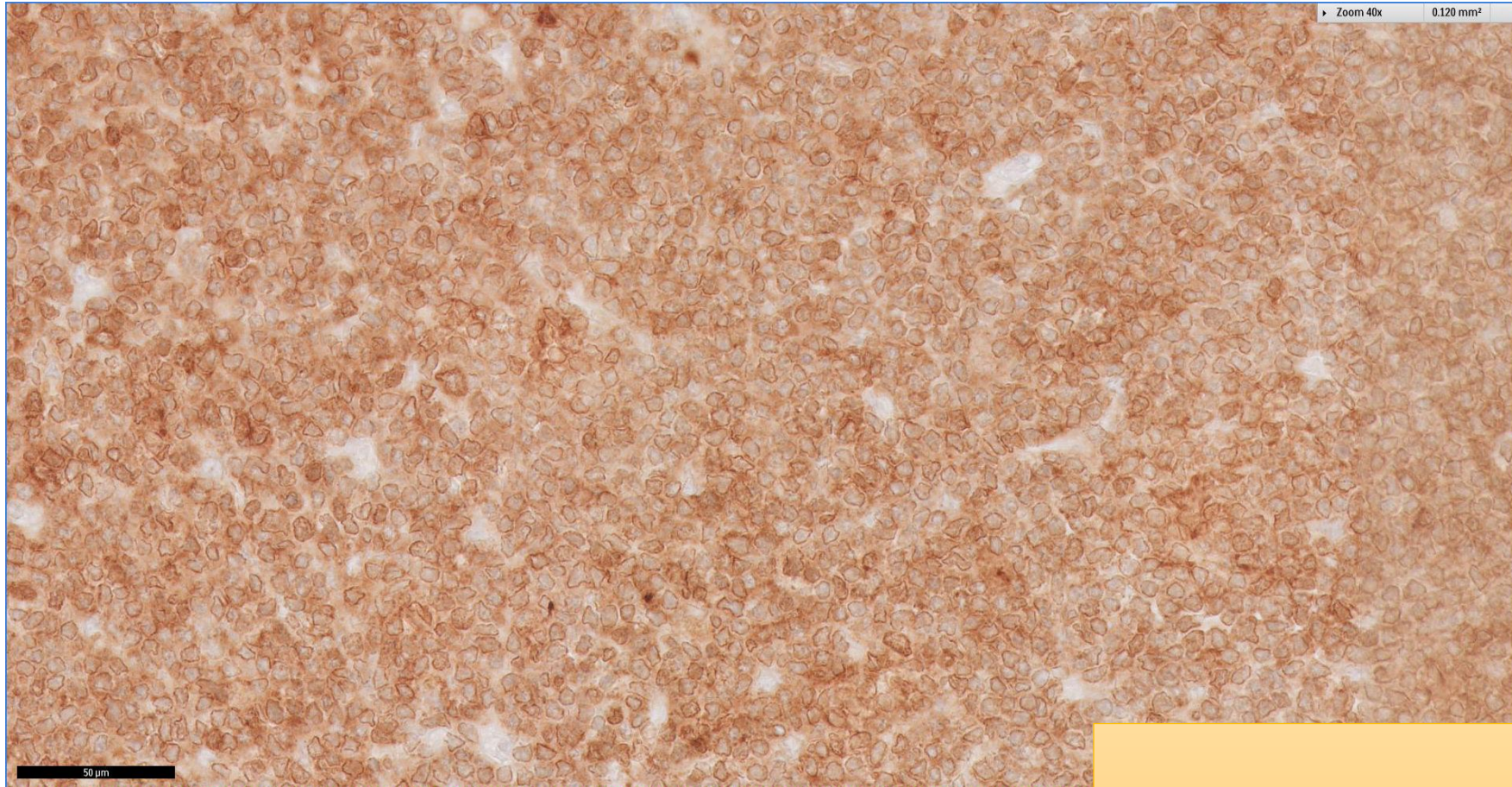
SGH CASE 43: 17RE168 CD10



SGH haematolymphoid workshop 2017. © All Materials are
Copyright of Singapore General Hospital Pathology. No Copy or
Reproduction without Permission.

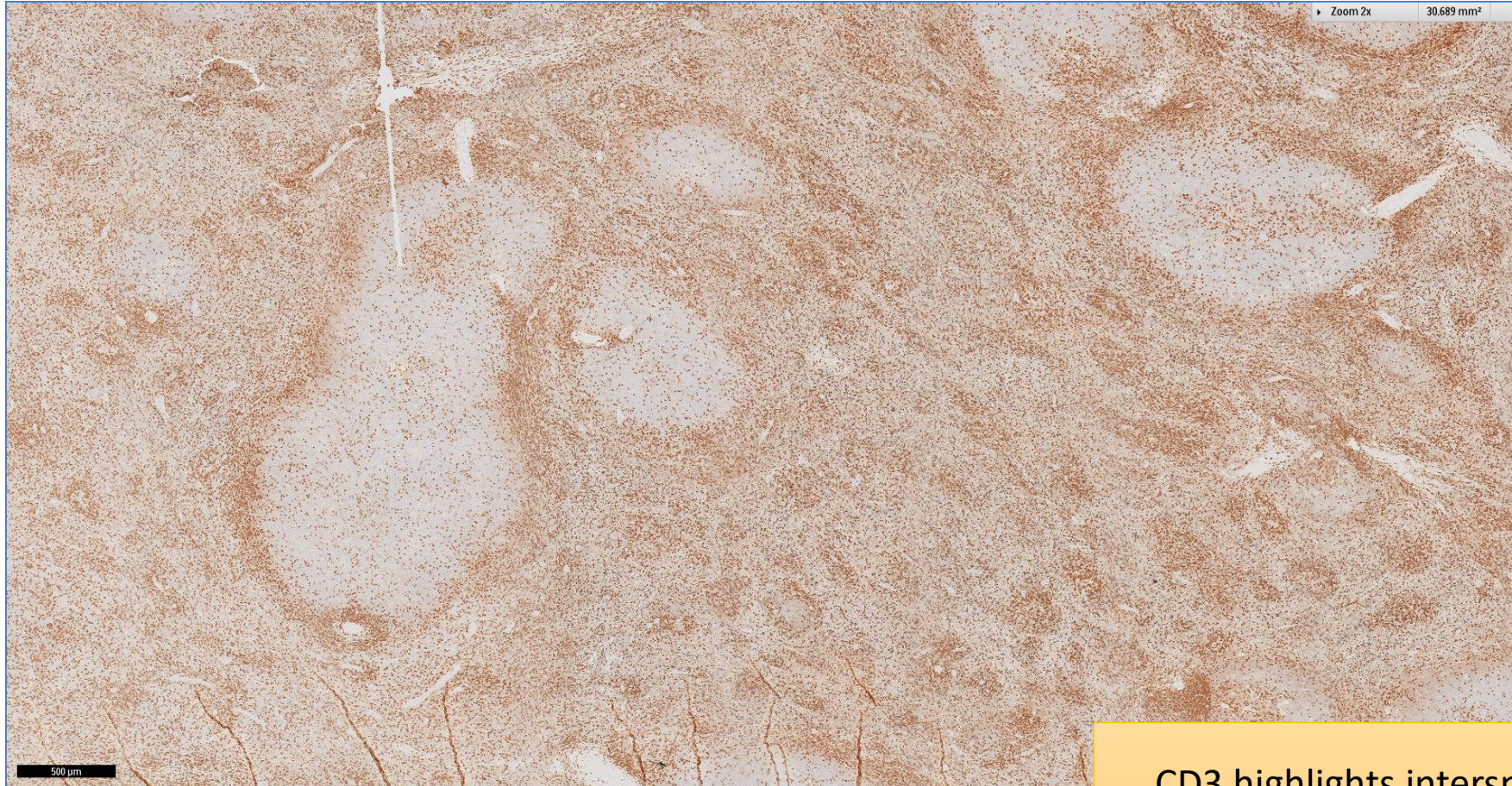
Lymphomatous cells are CD10(+)

SGH CASE 43: 17RE168 CD10



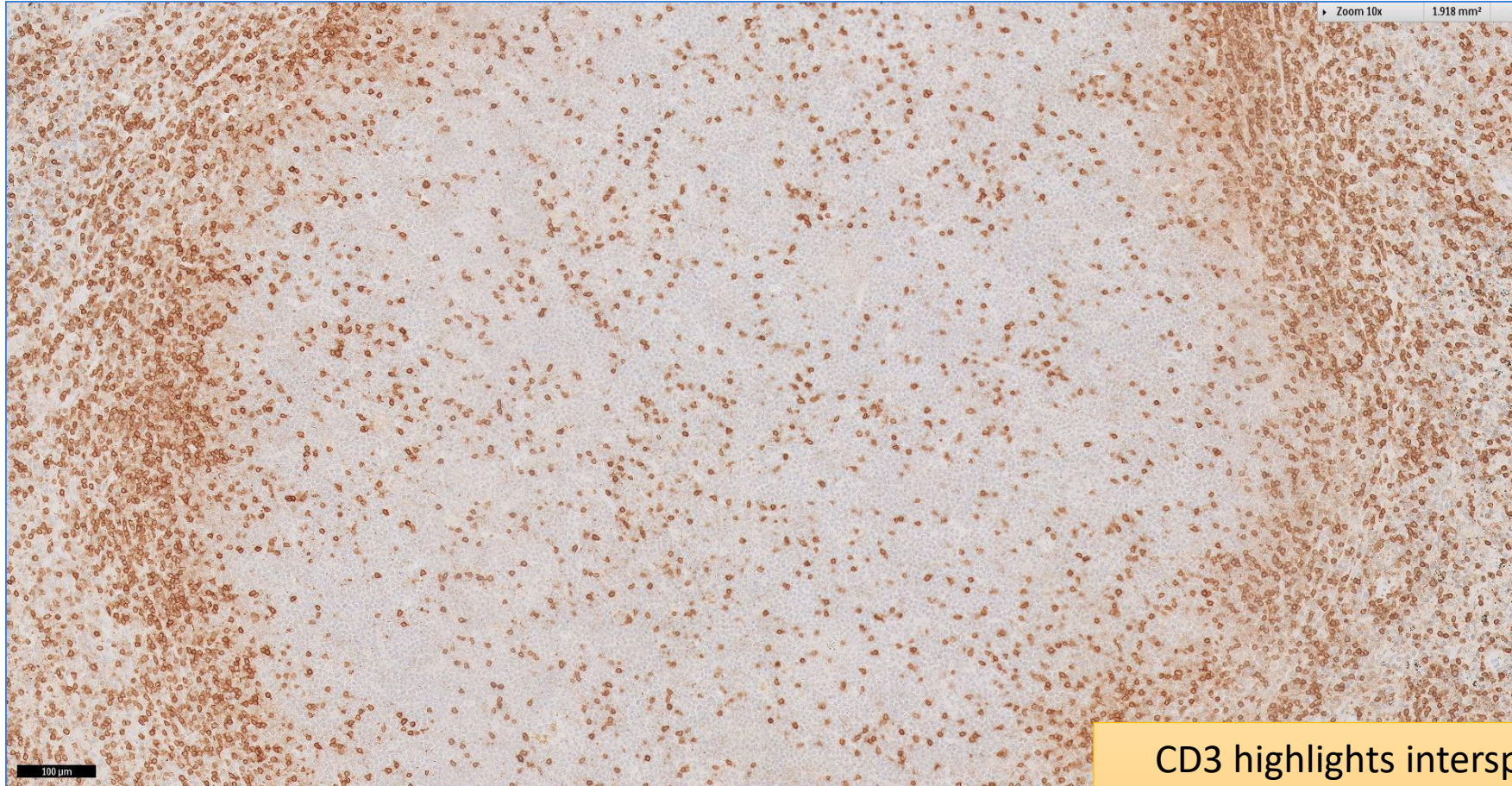
Lymphomatous cells are CD10(+)

SGH CASE 43: 17RE168 CD3



CD3 highlights interspersed reactive
small T-lymphocytes

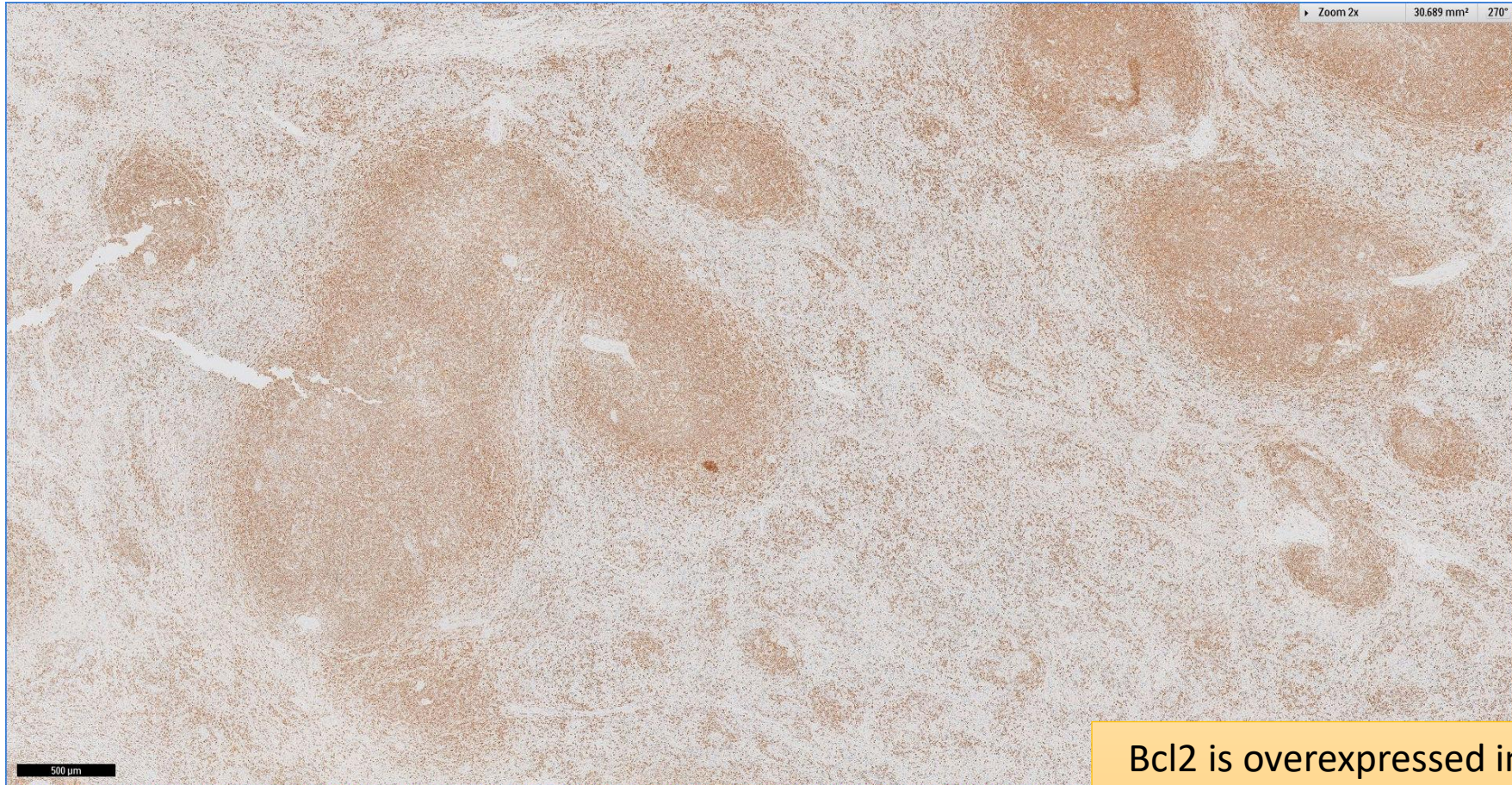
SGH CASE 43: 17RE168 CD3



SGH haematolymphoid workshop 2017. © All Materials are
Copyright of Singapore General Hospital Pathology. No Copy or
Reproduction without Permission.

CD3 highlights interspersed reactive
small T-lymphocytes, which are generally
sparse in the follicle centre

SGH CASE 43: 17RE168 BCL2



SGH haematolymphoid workshop 2017. © All Materials are
Copyright of Singapore General Hospital Pathology. No Copy or
Reproduction without Permission.

Bcl2 is overexpressed in the white pulp
lymphomatous cells which cannot be
accounted for by the T-cells

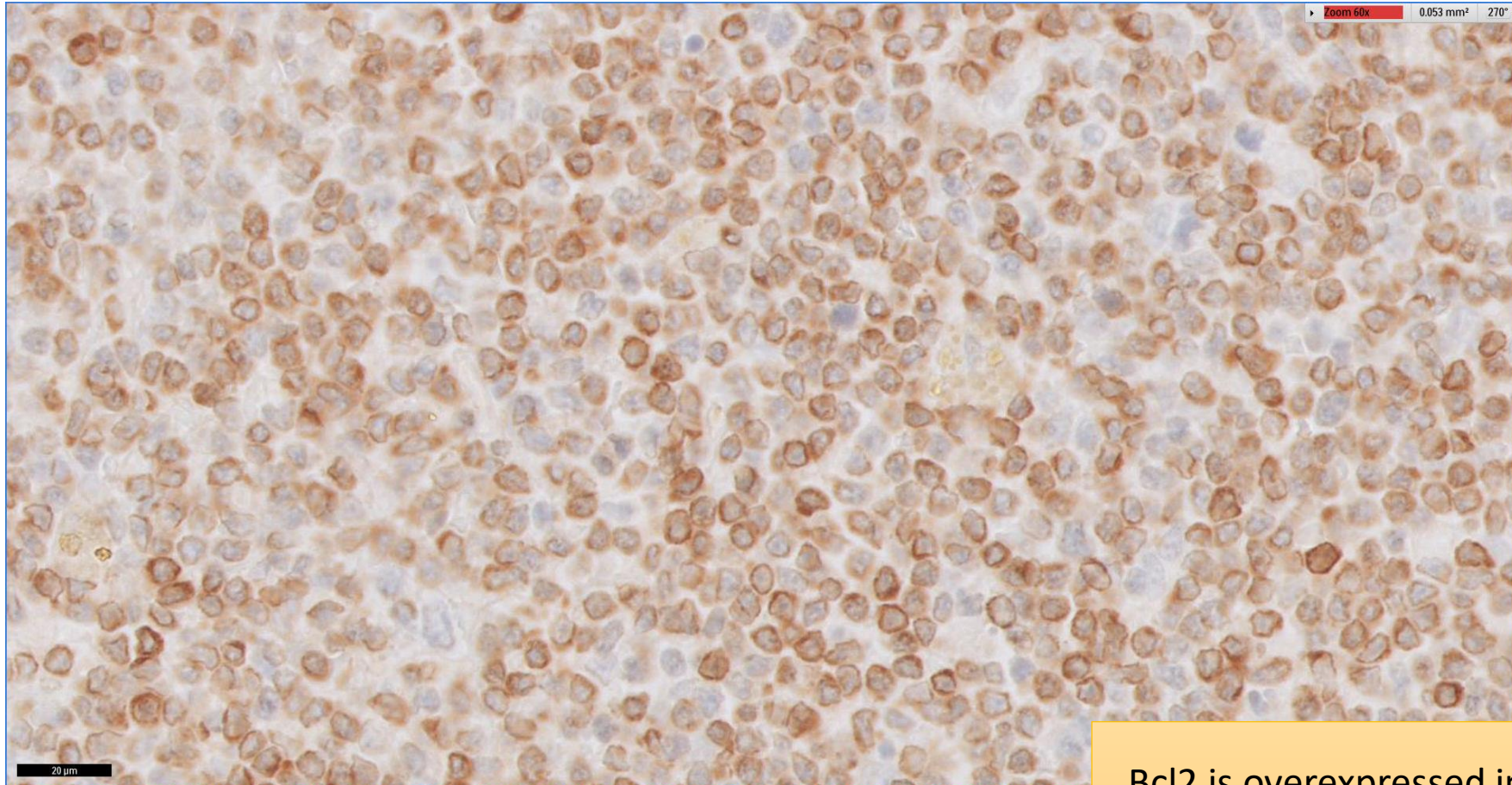
SGH CASE 43: 17RE168 BCL2



SGH haematolymphoid workshop 2017. © All Materials are
Copyright of Singapore General Hospital Pathology. No Copy or
Reproduction without Permission.

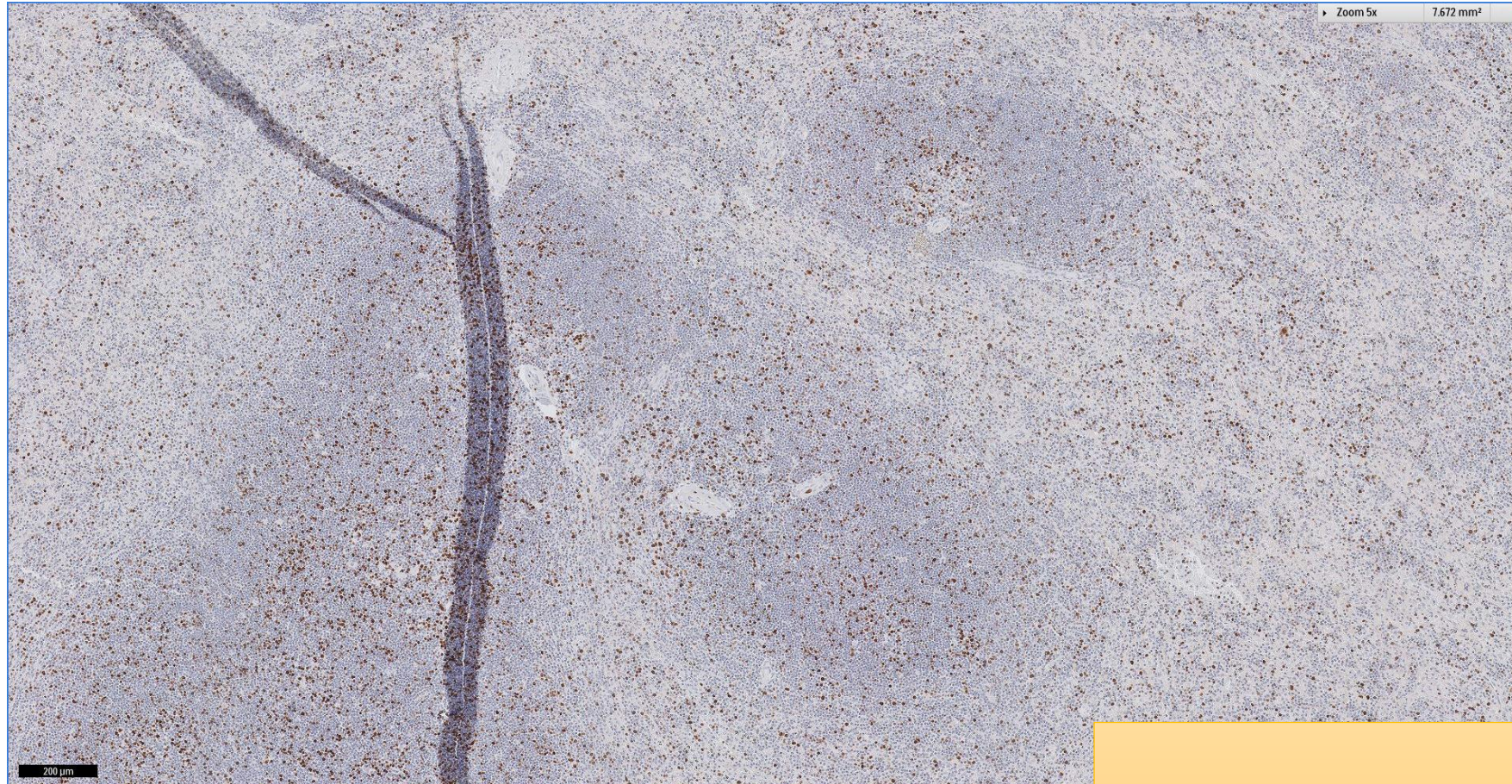
Bcl2 is overexpressed in the white pulp
lymphomatous cells which cannot be
accounted for by the T-cells

SGH CASE 43: 17RE168 BCL2



Bcl2 is overexpressed in the white pulp lymphomatous cells

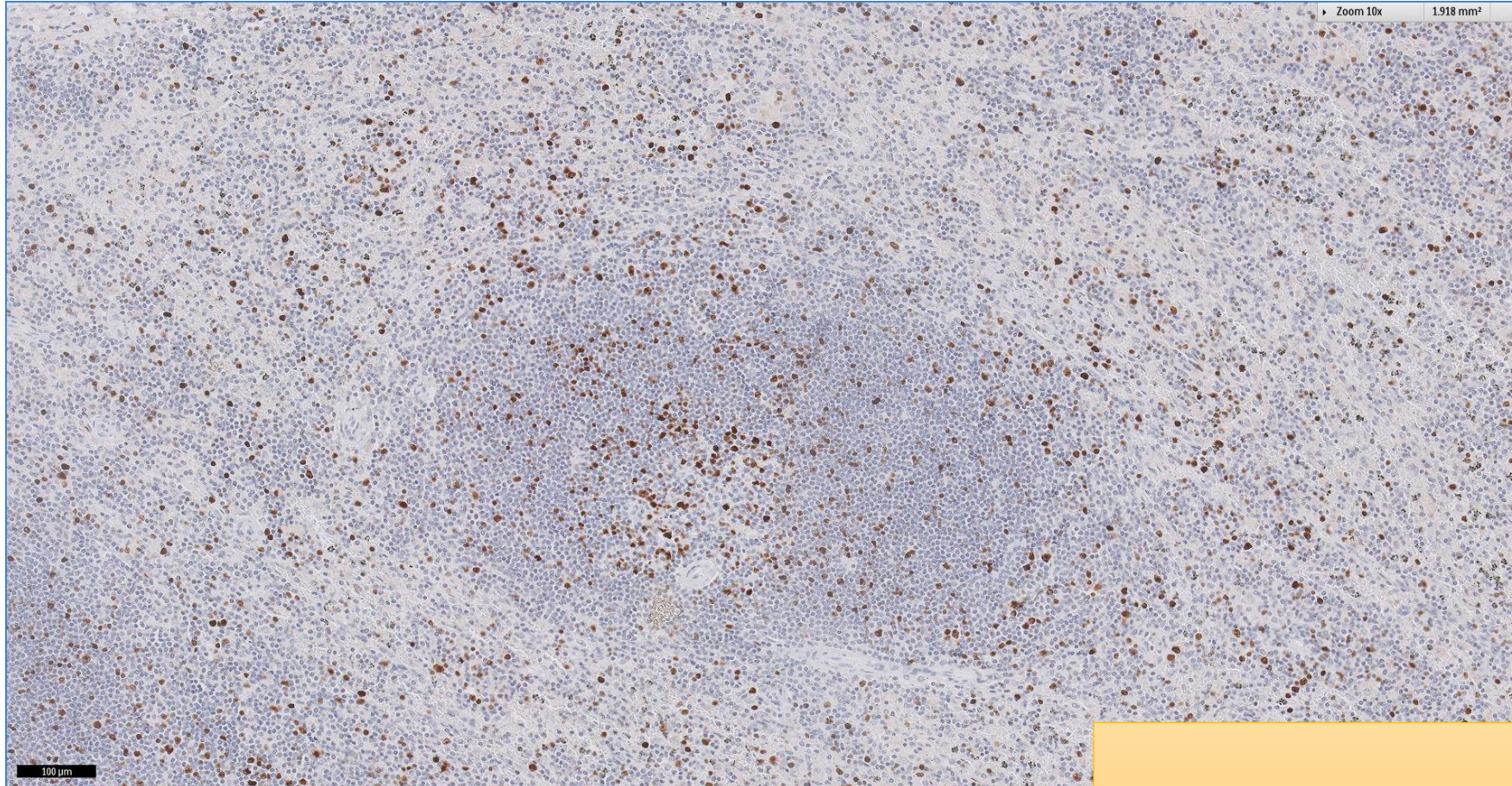
SGH CASE 43: 17RE168 KI67



SGH haematolymphoid workshop 2017. © All Materials are
Copyright of Singapore General Hospital Pathology. No Copy or
Reproduction without Permission.

Ki-67 proliferation index is generally low

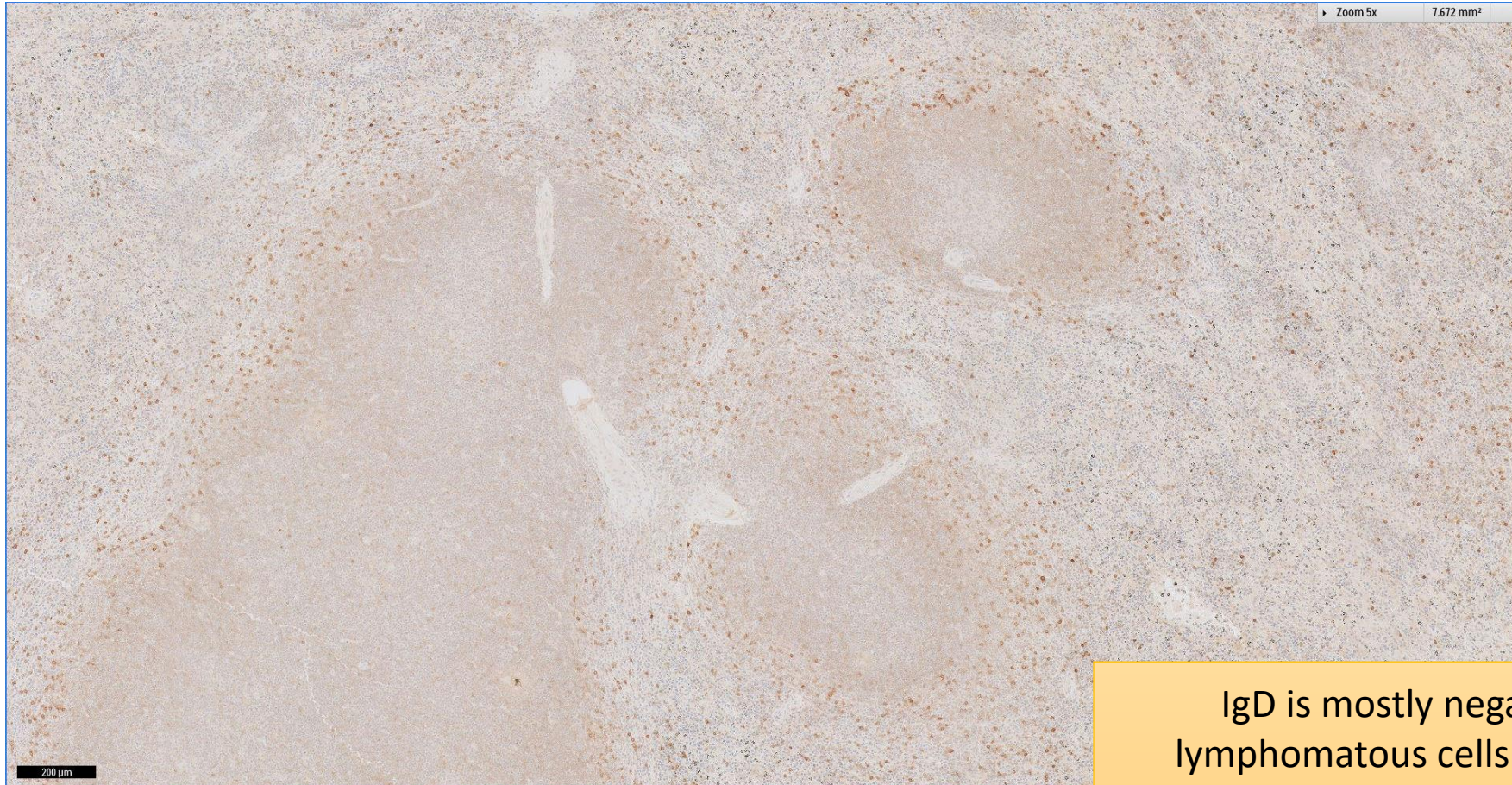
SGH CASE 43: 17RE168 KI67



SGH haematolymphoid workshop 2017. © All Materials are
Copyright of Singapore General Hospital Pathology. No Copy or
Reproduction without Permission.

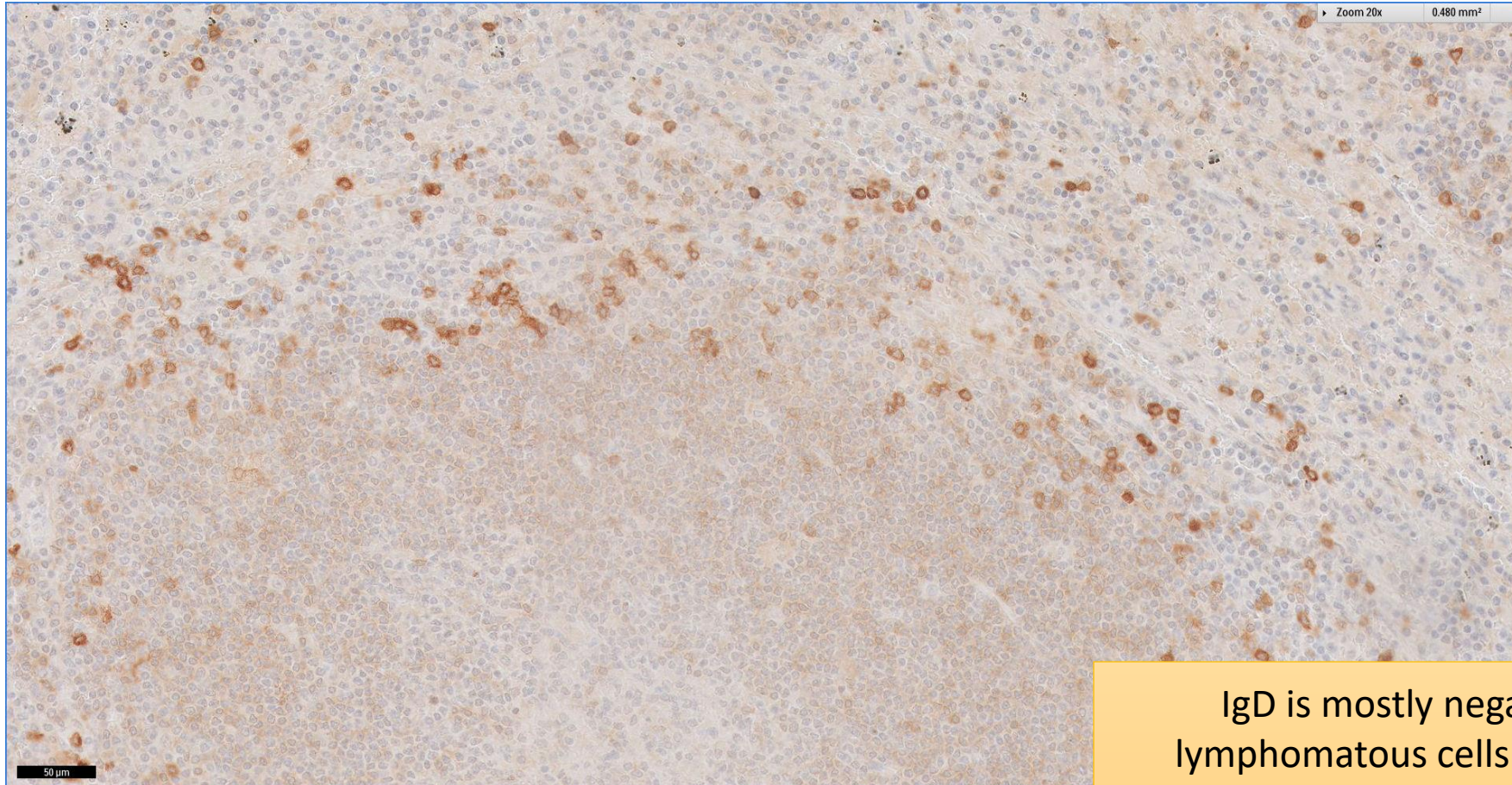
Ki-67 proliferation index is generally low

SGH CASE 43: 17RE168 IgD



IgD is mostly negative in the lymphomatous cells and highlight remnant scattered mantle zone cells at the periphery of the white pulp

SGH CASE 43: 17RE168 IgD



IgD is mostly negative in the lymphomatous cells and highlight remnant scattered mantle zone cells at the periphery of the white pulp

SGH CASE 43: 17RE168

- Diagnosis
 - Follicular lymphoma