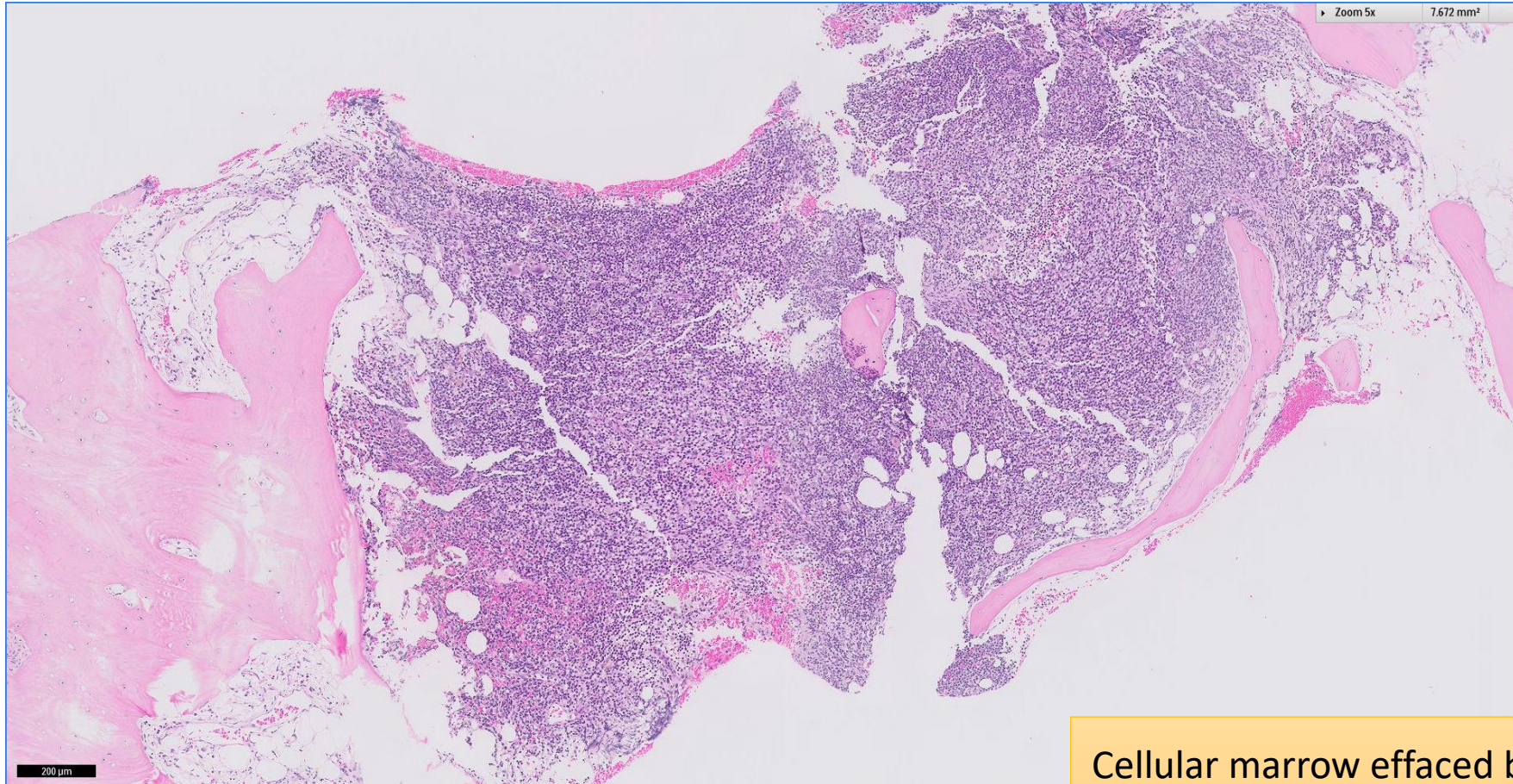


# SGH CASE 40: 17RE165

- Clinical History:
  - 70+ years old, Female. Pancytopenia with splenomegaly
- Specimen:
  - Bone marrow trephine biopsy

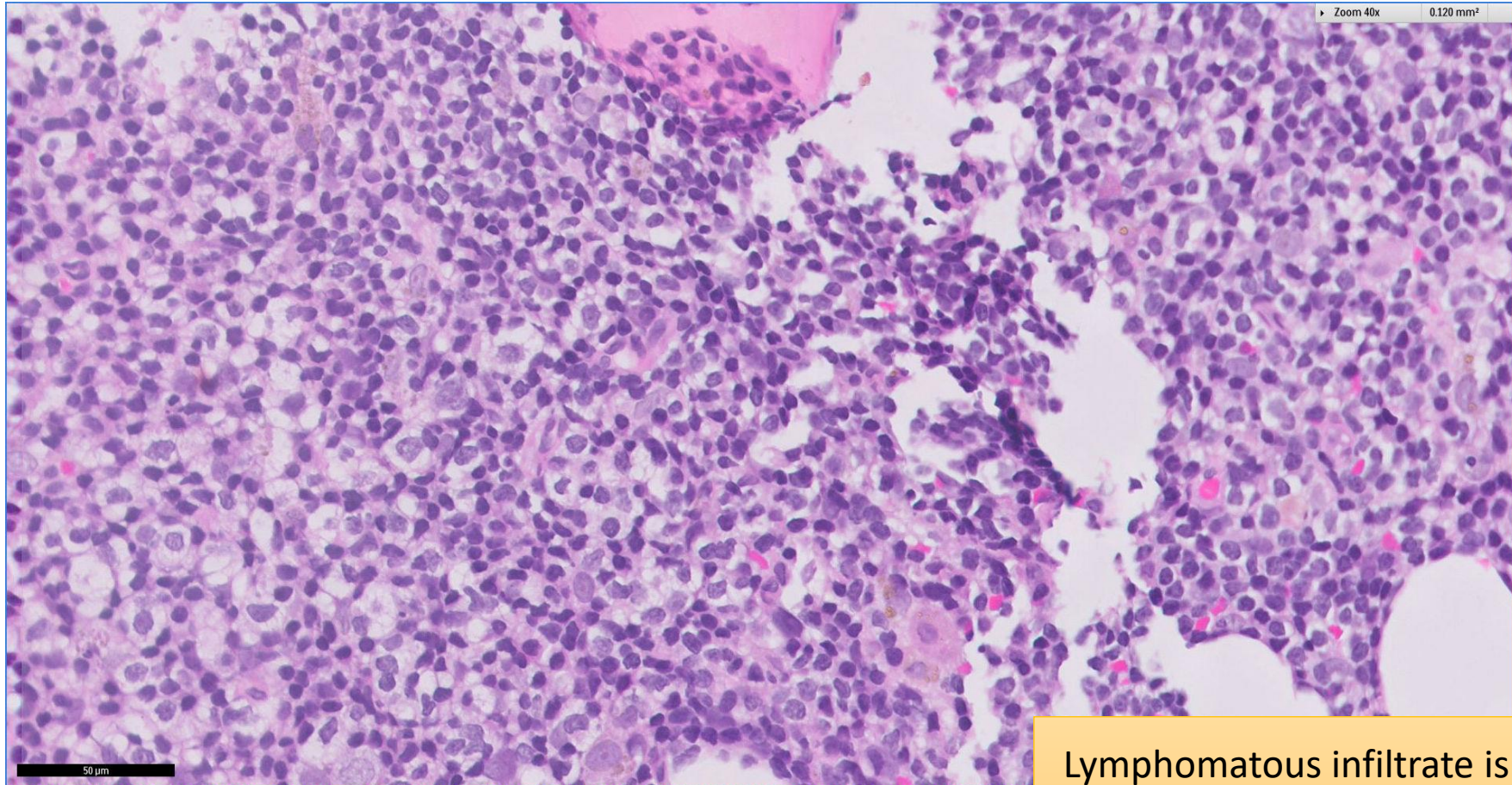
# SGH CASE 40: 17RE165 H&E



Cellular marrow effaced by diffuse lymphomatous infiltrate



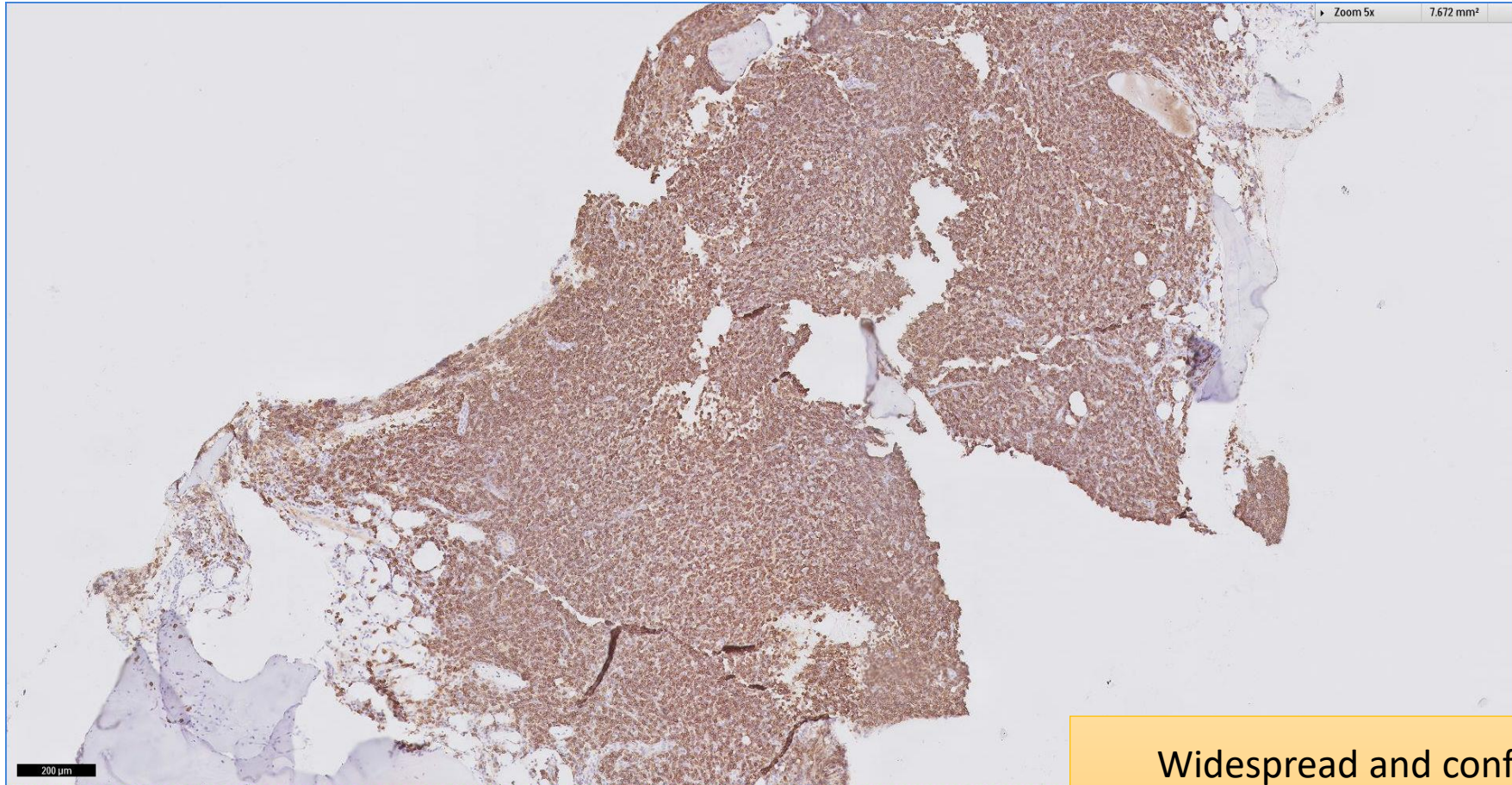
# SGH CASE 40: 17RE165 H&E



Lymphomatous infiltrate is composed of small-to-medium sized cells



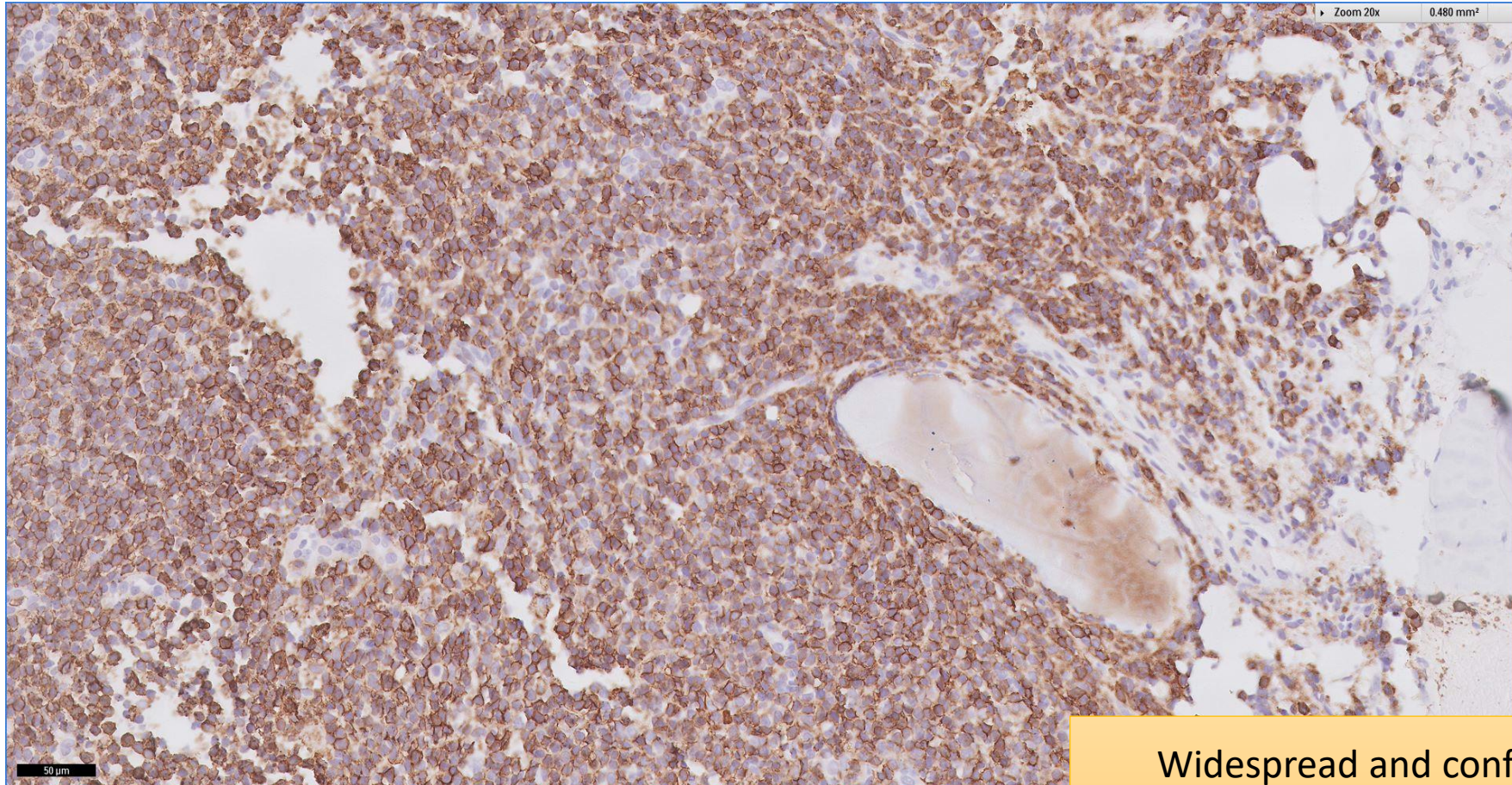
# SGH CASE 40: 17RE165 CD20



**Widespread and confluent  
positivity for CD20**



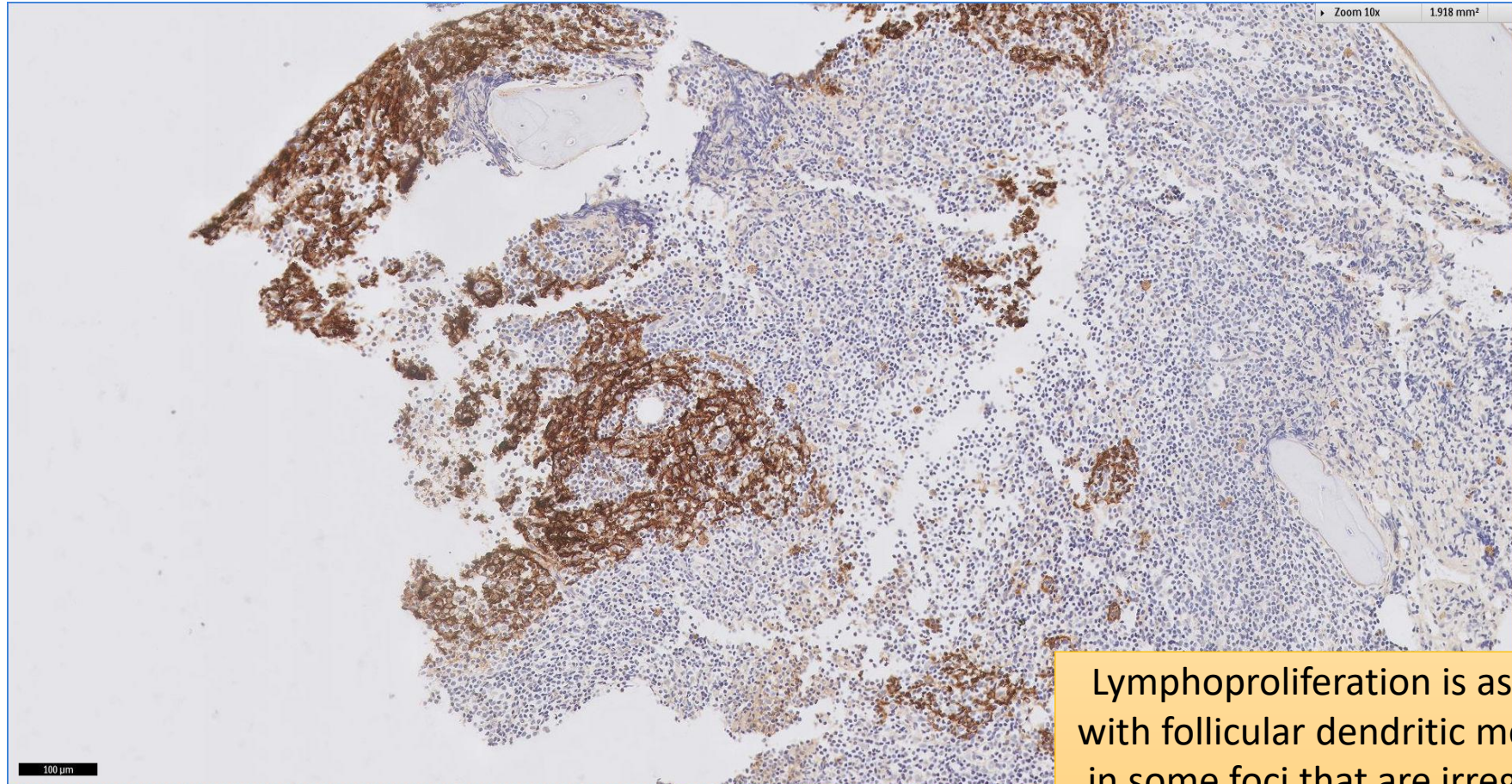
# SGH CASE 40: 17RE165 CD20



**Widespread and confluent  
positivity for CD20**



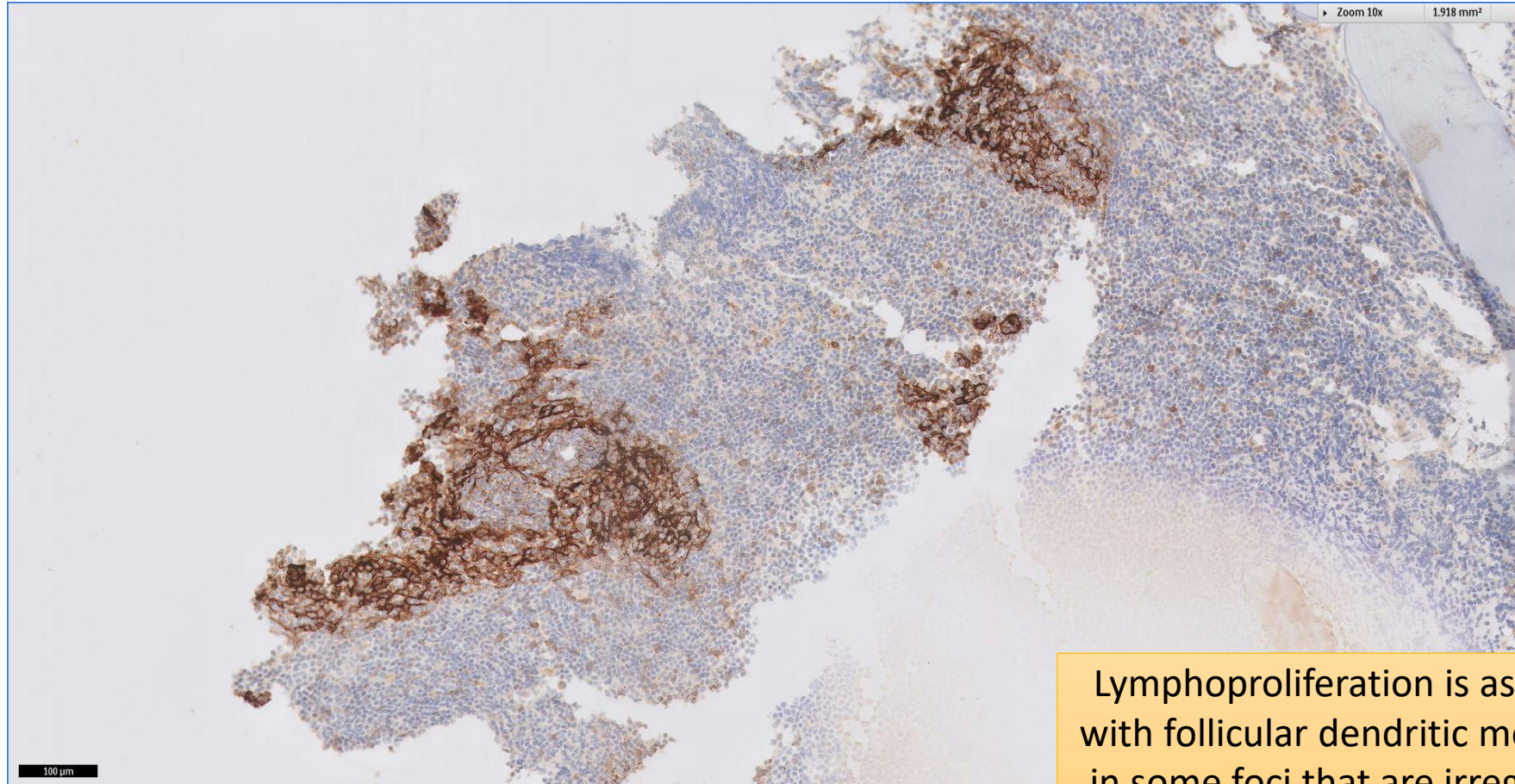
# SGH CASE 40: 17RE165 CD21



Lymphoproliferation is associated with follicular dendritic meshworks in some foci that are irregular and expanded



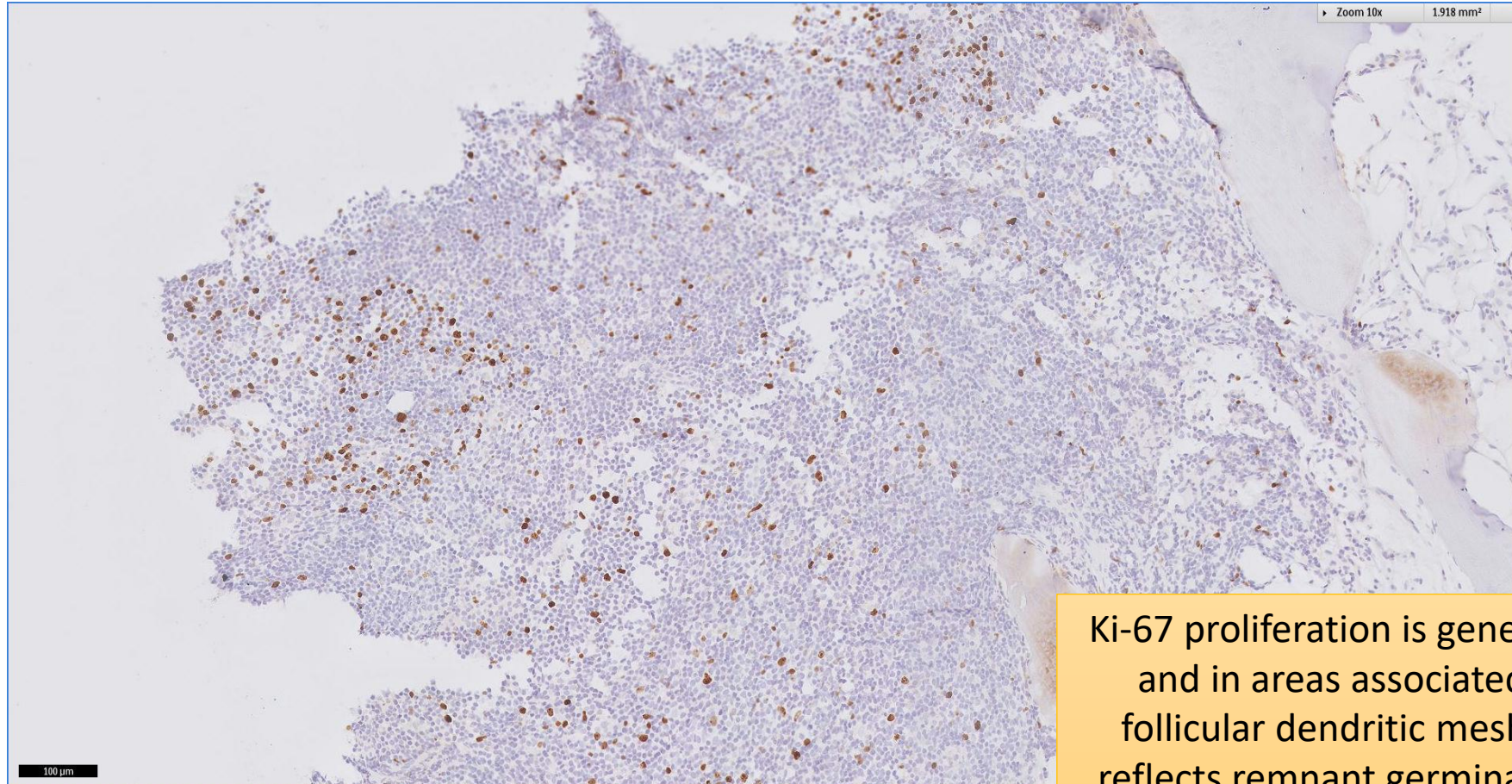
# SGH CASE 40: 17RE165 CD23



Lymphoproliferation is associated with follicular dendritic meshworks in some foci that are irregular and expanded



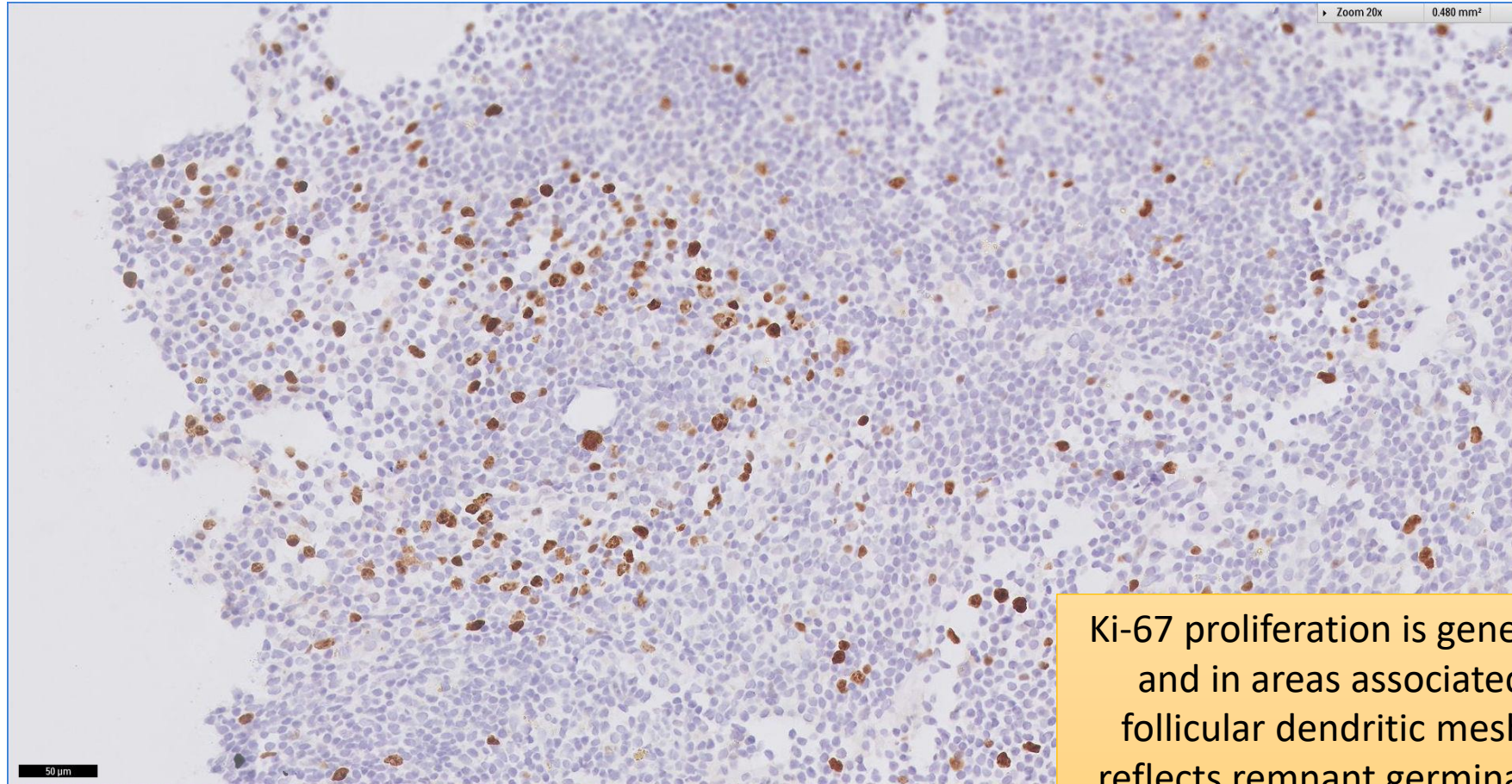
# SGH CASE 40: 17RE165 KI67



Ki-67 proliferation is generally low and in areas associated with follicular dendritic meshworks reflects remnant germinal centre cells of colonised follicles



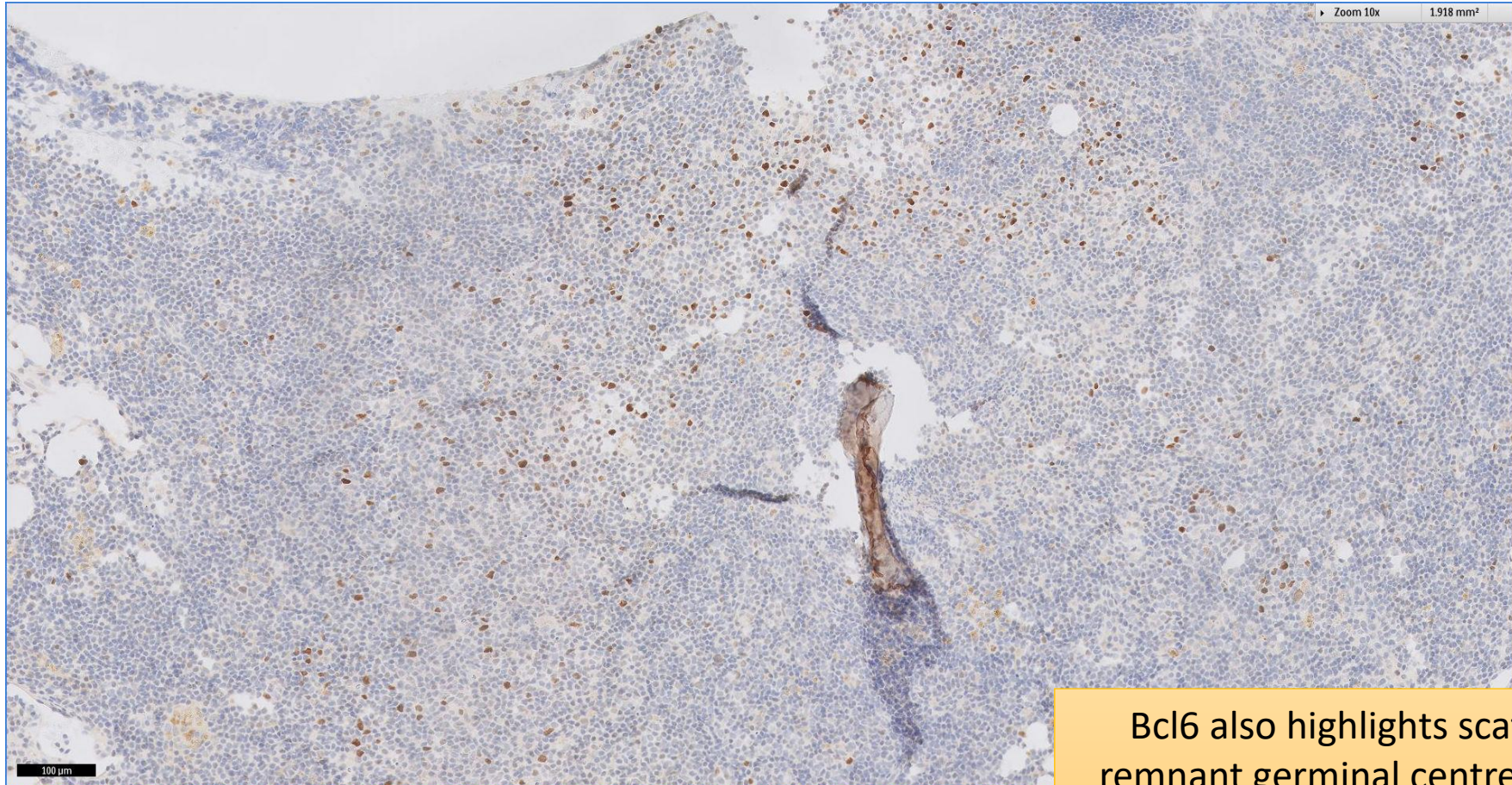
# SGH CASE 40: 17RE165 KI67



Ki-67 proliferation is generally low and in areas associated with follicular dendritic meshworks reflects remnant germinal centre cells of colonised follicles



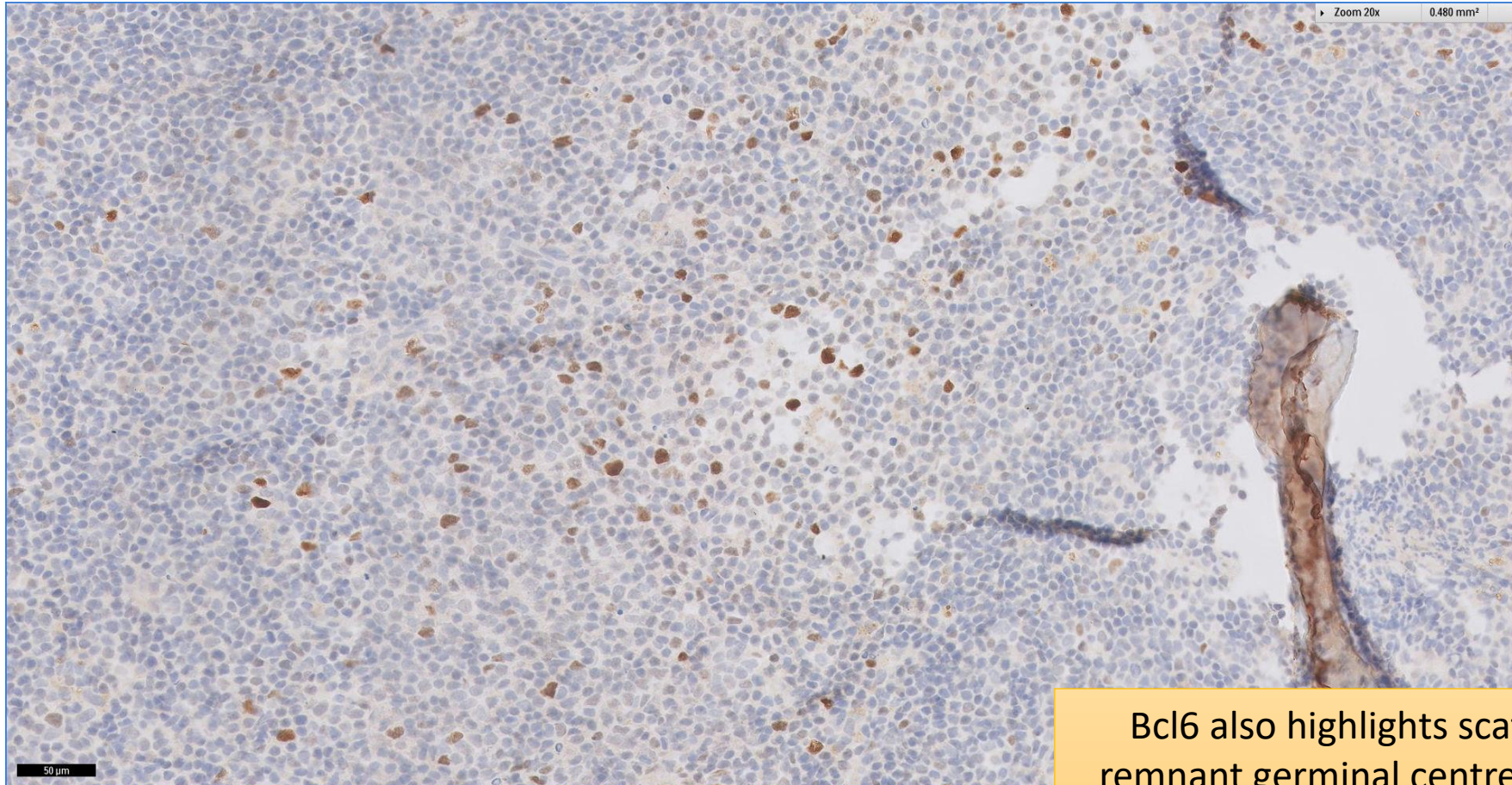
# SGH CASE 40: 17RE165 BCL6



**Bcl6 also highlights scattered remnant germinal centre cells of colonised follicles**



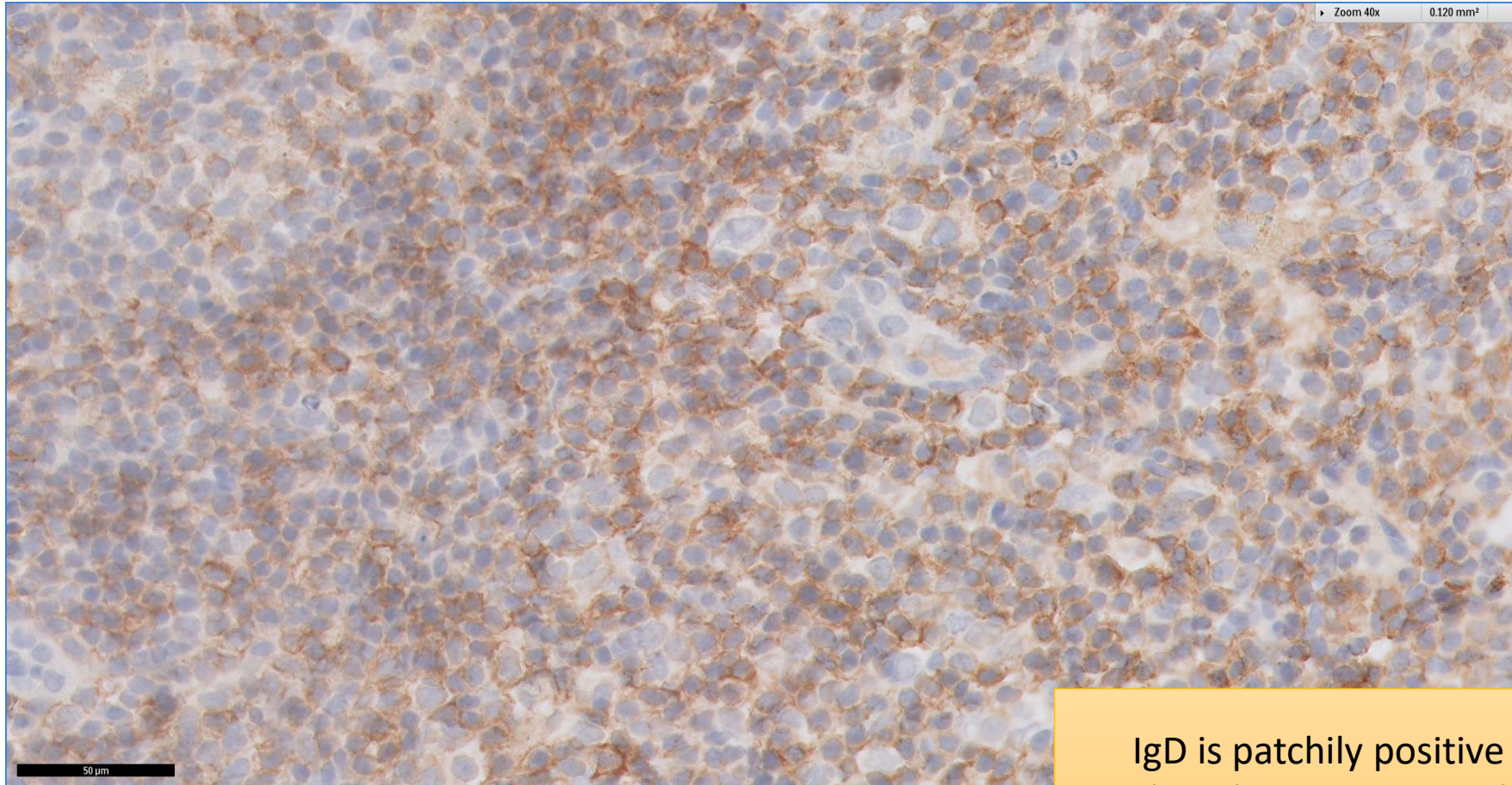
# SGH CASE 40: 17RE165 BCL6



**Bcl6 also highlights scattered remnant germinal centre cells of colonised follicles**



# SGH CASE 40: 17RE165 IgD



IgD is patchily positive in the lymphomatous population



# SGH CASE 40: 17RE165

- Diagnosis
  - Involved by Marginal Zone Lymphoma (Likely Splenic Origin)
- Lymphomatous cells are negative for CD5, CD23, cyclin D1 and CD123.