

SGH CASE 38: 17RE162

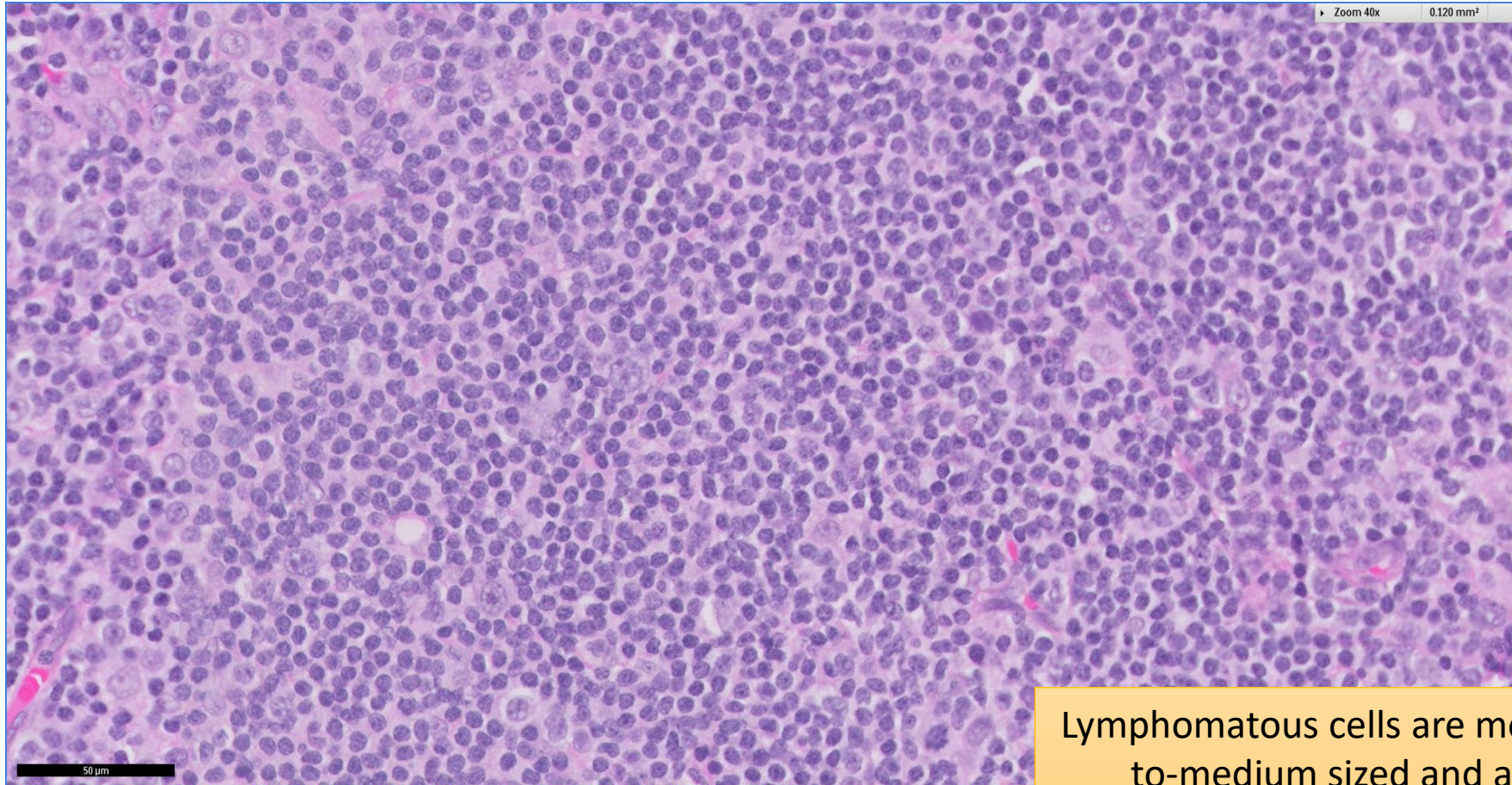
- Clinical History:
 - 60 years old, Male. Previously had nasopharyngeal mass. Now with cervical lymphadenopathy.
- Specimen:
 - Left level 5 cervical lymph node biopsy

SGH CASE 38: 17RE162 H&E



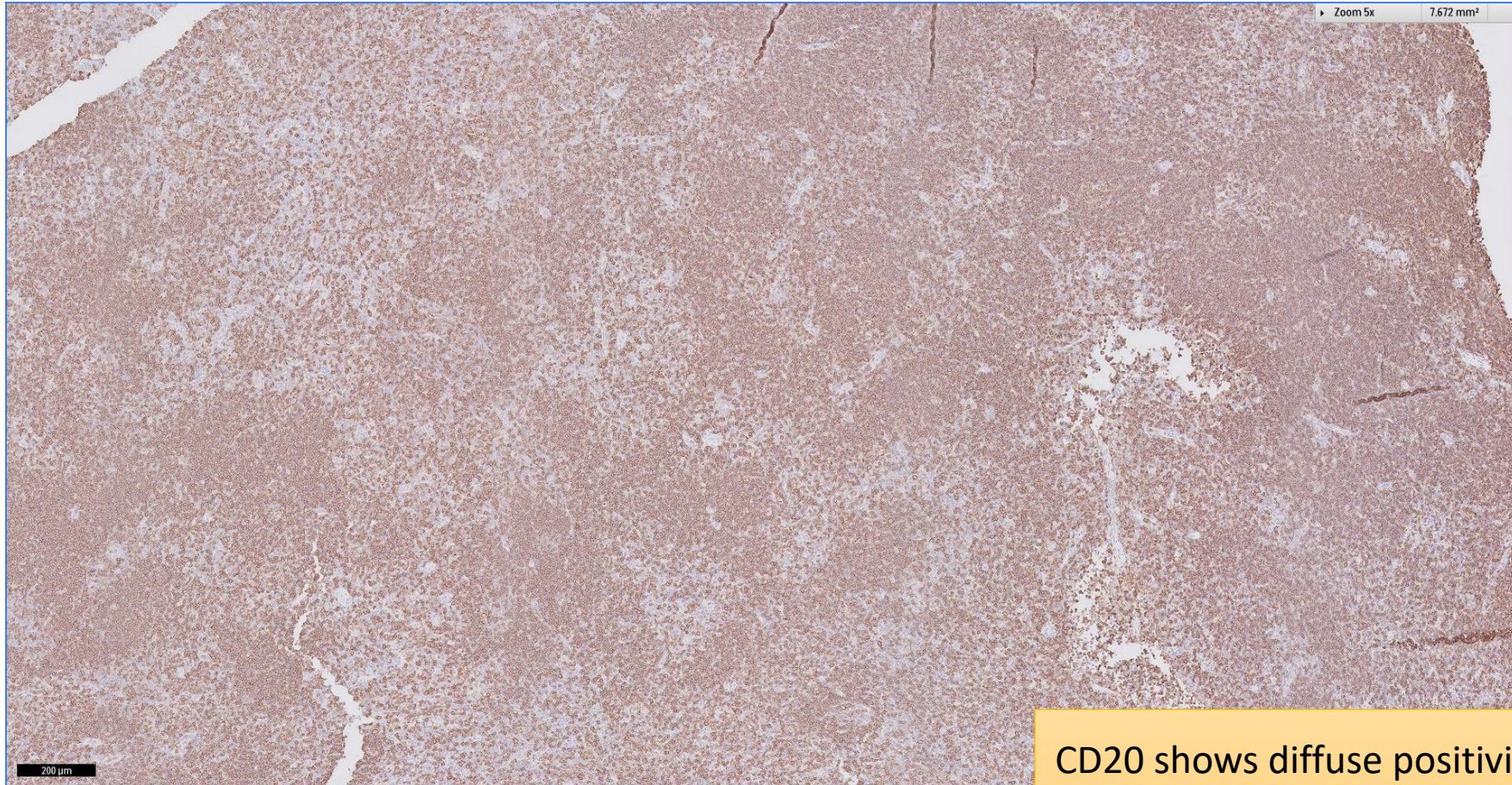
Nodal architecture is effaced by a vaguely nodular lymphoproliferation

SGH CASE 38: 17RE162 H&E



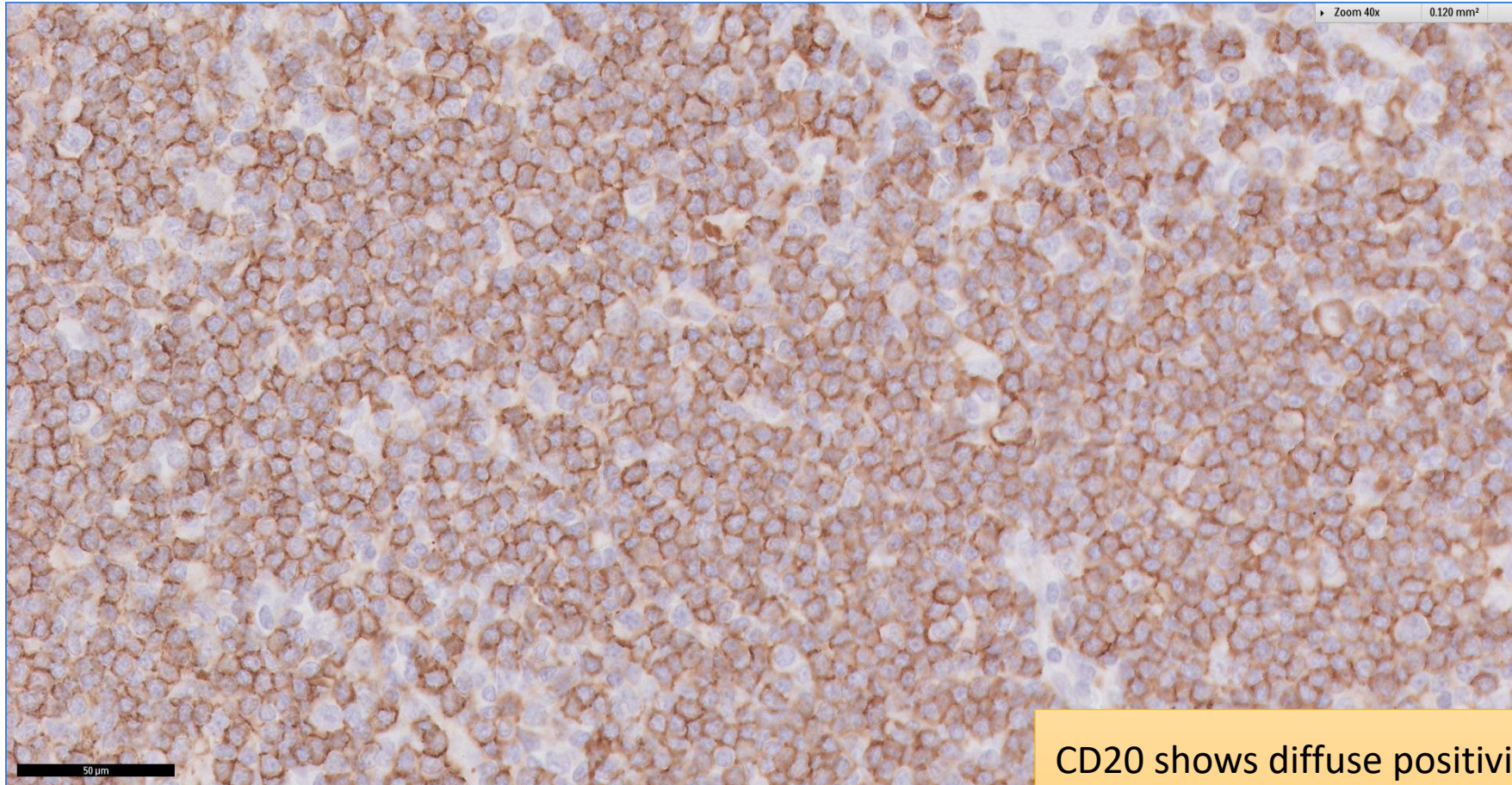
Lymphomatous cells are mostly small-to-medium sized and appears monocytoid

SGH CASE 38: 17RE162 CD20



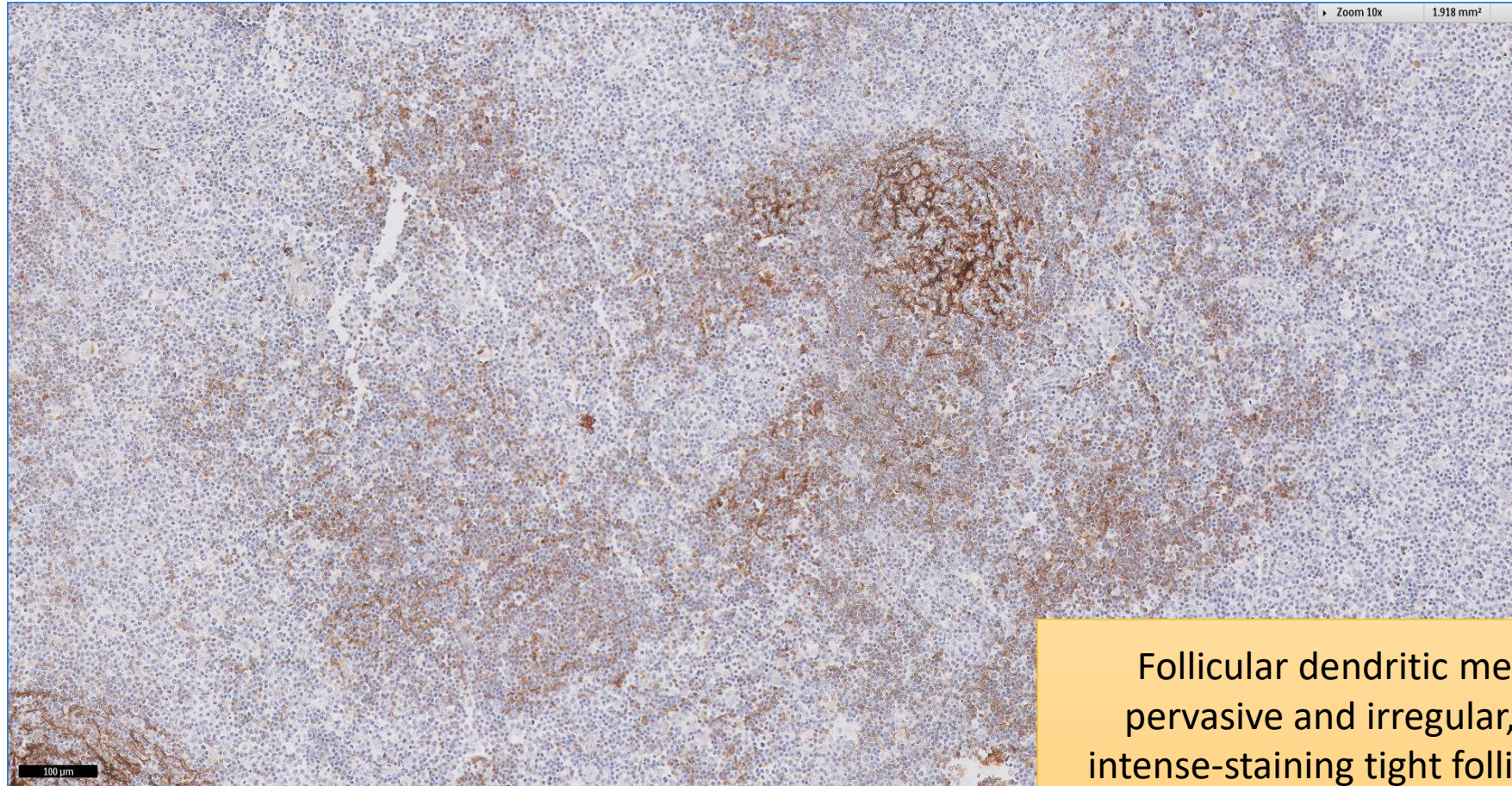
CD20 shows diffuse positivity with loss of follicular compartmentalisation

SGH CASE 38: 17RE162 CD20



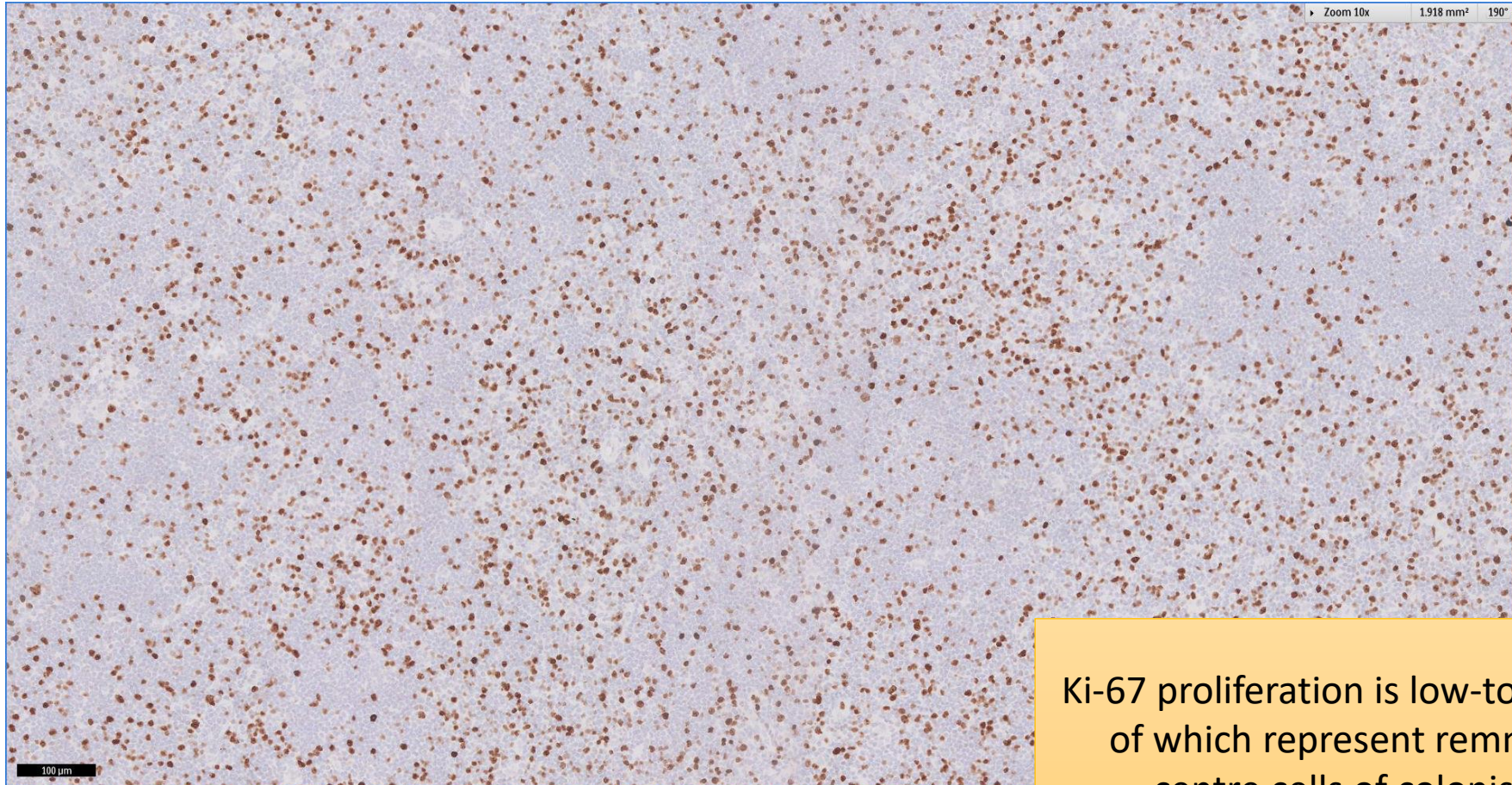
CD20 shows diffuse positivity with loss of follicular compartmentalisation

SGH CASE 38: 17RE162 CD21



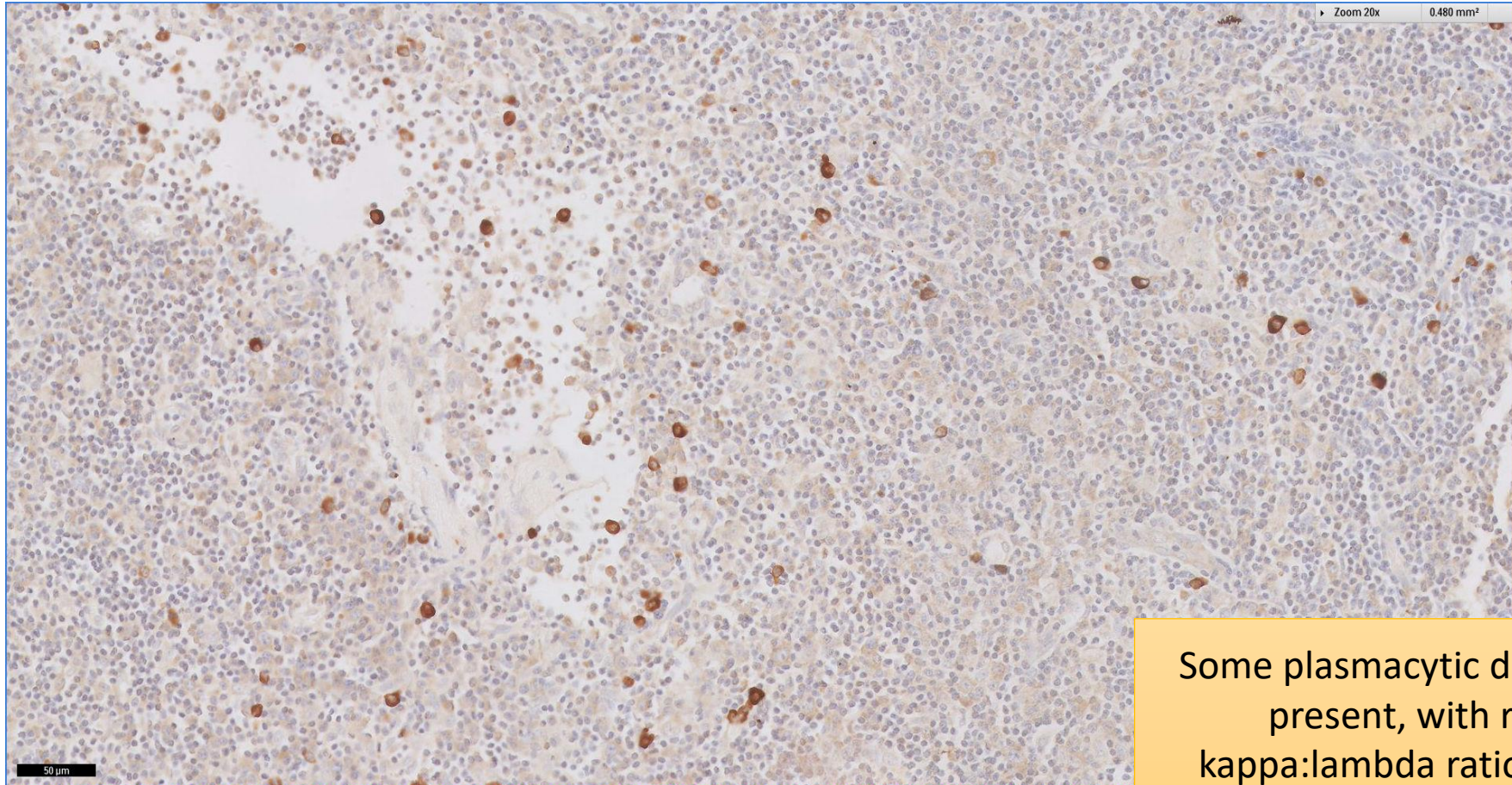
Follicular dendritic meshworks are pervasive and irregular, with central intense-staining tight follicle centre with surrounding attenuated expanded fractions

SGH CASE 38: 17RE162 KI67



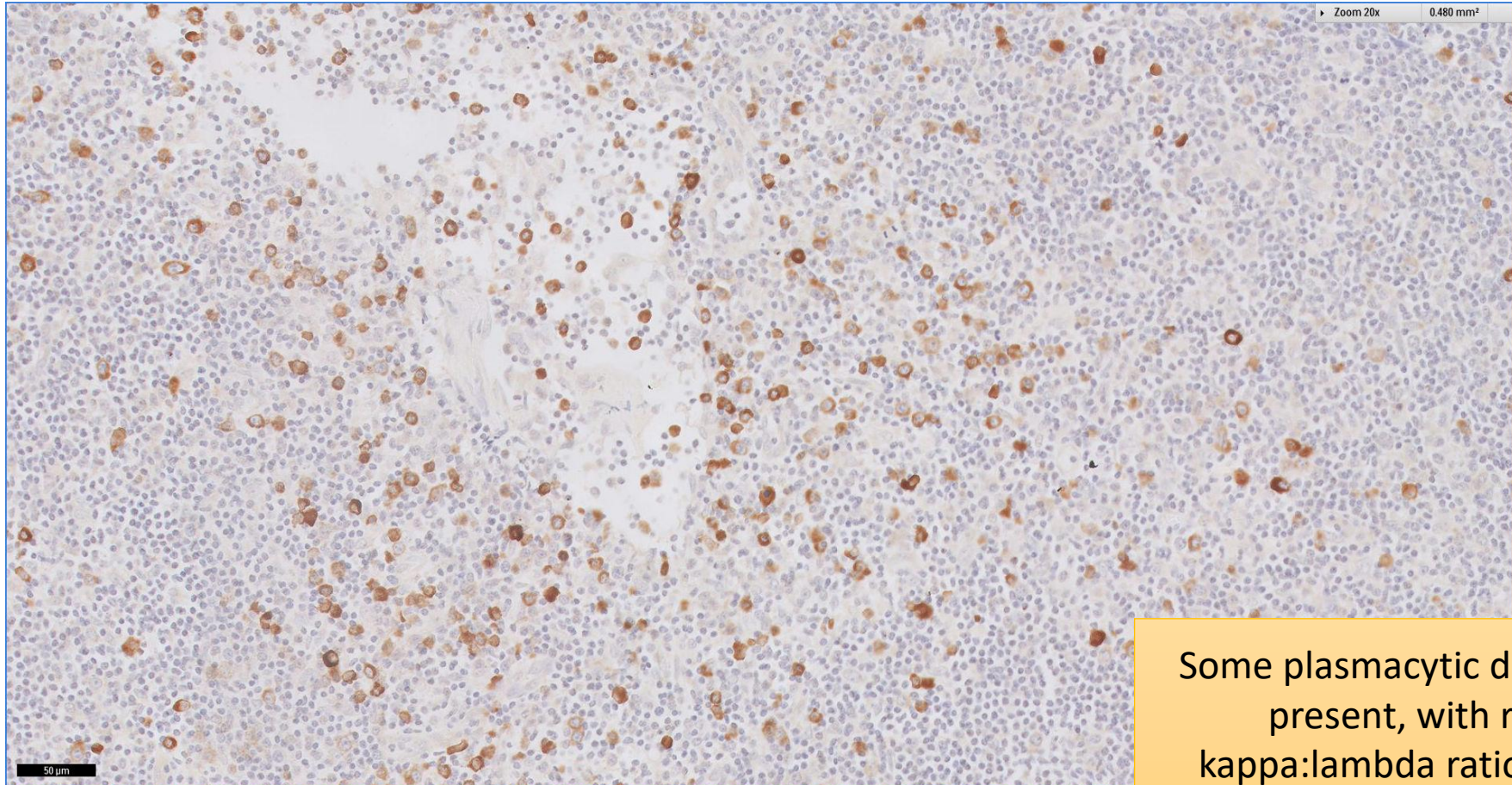
Ki-67 proliferation is low-to-moderate, part of which represent remnant germinal centre cells of colonised follicles

SGH CASE 38: 17RE162 KAPPA-ISH



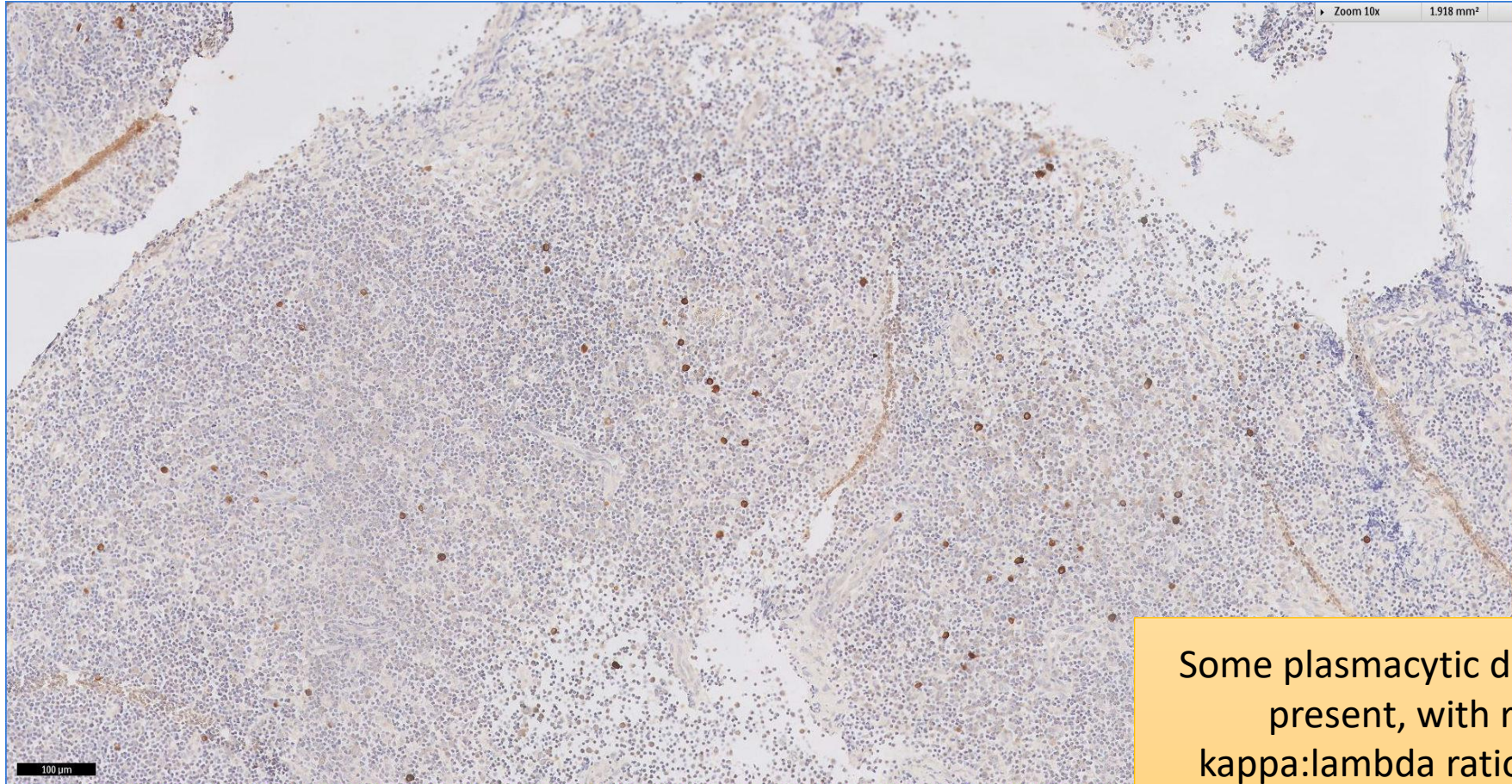
Some plasmacytic differentiation is present, with reversal of kappa:lambda ratio representing lambda light chain restriction

SGH CASE 38: 17RE162 LAMBDA-ISH



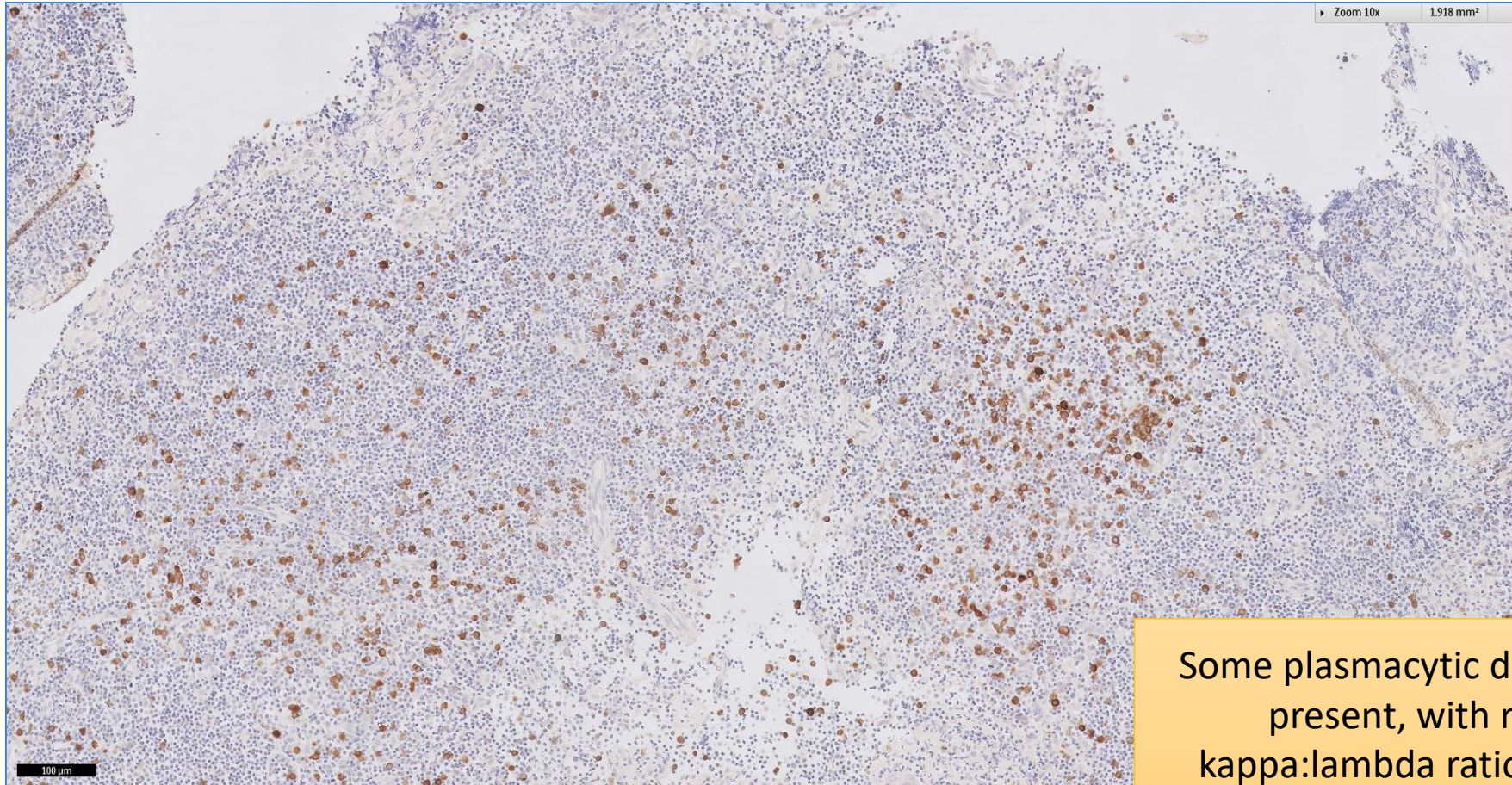
Some plasmacytic differentiation is present, with reversal of kappa:lambda ratio representing lambda light chain restriction

SGH CASE 38: 17RE162 KAPPA-ISH



Some plasmacytic differentiation is present, with reversal of kappa:lambda ratio representing lambda light chain restriction

SGH CASE 38: 17RE162 LAMBDA-ISH



Some plasmacytic differentiation is present, with reversal of kappa:lambda ratio representing lambda light chain restriction

SGH CASE 38: 17RE162

- Diagnosis
 - Involved by Marginal Zone Lymphoma (Previous Extranodal Marginal Zone Lymphoma of Mucosa-associated Lymphoid Tissue)
- Preceding history of Extranodal Marginal Zone Lymphoma of Mucosa-associated Lymphoid Tissue in the post-nasal space with marked plasmacytic differentiation (lambda light chain restricted)